

MPH_{IN} ENVIRONMENTAL HEALTH SCIENCE AT BAYLOR

CURRICULUM

43 credit hours

Toxicology and Human Health Risk Assessment

Protect Local Communities from Health Hazards

Local to Global Opportunities

General public health core

Program commences Fall semester

OUR FACULTY



Dr. Bryan Brooks



Dr. Erica Bruce



Dr. Leigh Greathouse



Dr. Ramon Lavado



Dr. Benjamin Ryan



Dr. Christie Sayes

TO APPLY

Schools of Public Health Application Service

GPA and GRE scores

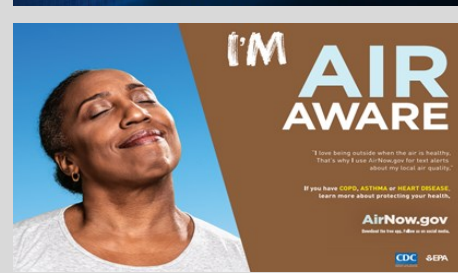
Personal statement

2 recommendation letters

Apply by June 1, 2022 for the Fall

Visit: www.sophas.org

www.baylor.edu/publichealth



Contact

EHScience@Baylor.edu
(254) 710-3519

Dr. Benjamin J. Ryan
Program Coordinator
Environmental Health Science
Benjamin_Ryan@baylor.edu
(254) 710-2531

Dr. Bryan W. Brooks, Director
Environmental Health Science
Bryan_Brooks@baylor.edu

MPH in Environmental Health Science	YEAR ONE		YEAR TWO		
	Fall	Spring	Sum- mer	Fall	Spring
Degree Program Requirements (43 credit hours)					
PUBH 5334 Foundations of Public Health	3				
PUBH 5315 Theoretical Foundations of Health Behavior and Public Health	3				
PUBH 5337 Public Health Concepts in Epidemiology	3				
STA 5300 Statistical Methodology		3			
PUBH 5350 Assessment & Planning in Public and Community Health		3			
ENV 5302 Fundamentals of Environmental Health Science		3			
ENV 5102 Current Advances in Environmental Science		1			
Restricted Elective			3		
ENV 5V90 Practicum: 6 credit hours (must be approved)			3	3	
ENV 4344 Fundamentals of Toxicology				3	
PUBH 5378 Administration and Leadership in Public Health				3	
ENV 4345 Water Management					3
ENV 4325 Human Health Risk Assessment					3
NUTR 5354 Nutrition in Public Health					3
Total credit hours: 43	9	10	6	9	9