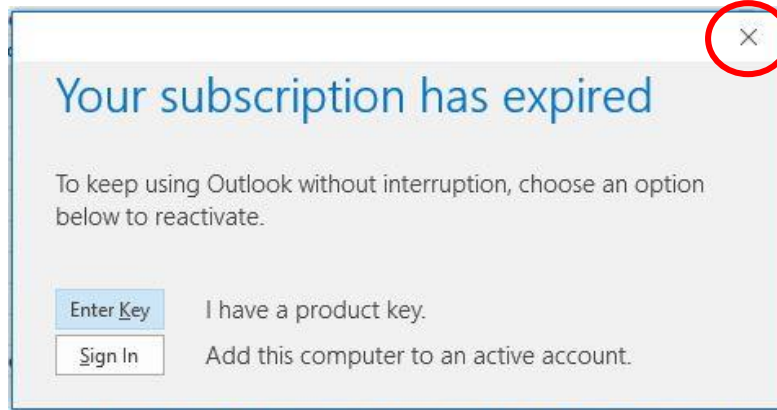
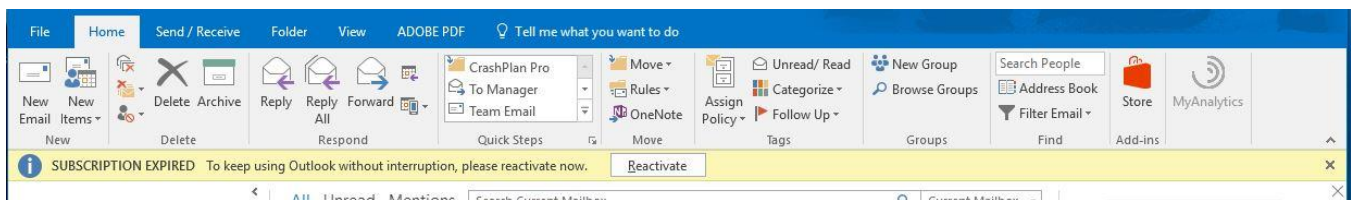


# Microsoft Office Behavior During License Transition

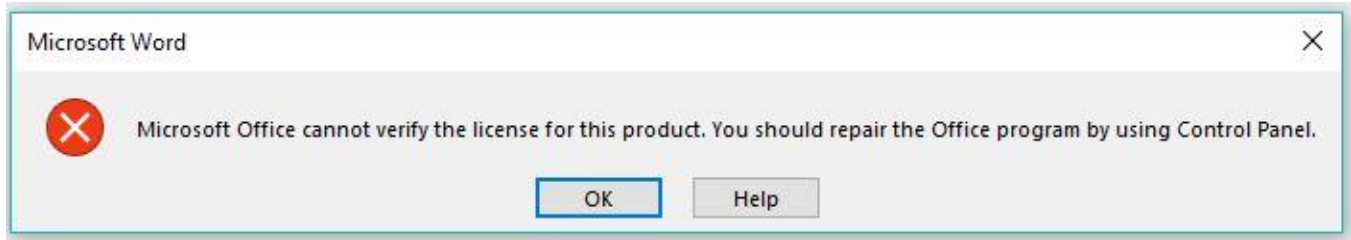
After the license transition on July 16, you will begin receiving warnings that your license has expired. You will see a message similar to the one below after launching a Microsoft application.



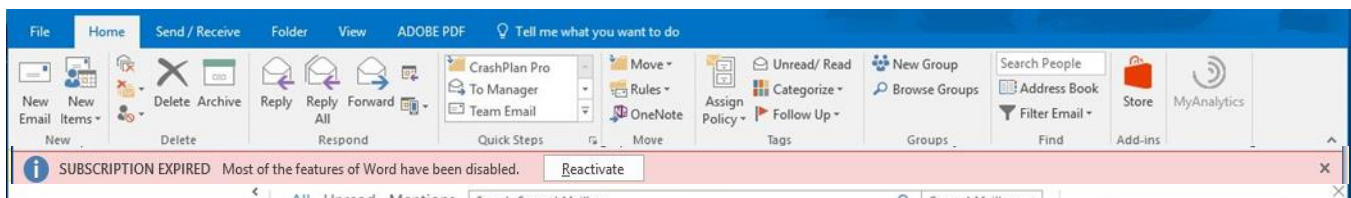
This is a warning. Clicking the “X” in the upper-right corner will allow full use of the application. You will notice a yellow banner near the top of the application.



Once the subscription fully expires, you will see the following message:



Clicking OK will take you to the application, but you will have Read-Only access – you will only be able to open existing documents; you will not be able to edit or create new documents. You will also notice a red banner has replaced the yellow banner across your application.



To gain full access to the Microsoft applications, log into [portal.office.com](http://portal.office.com). If you have any questions, please contact the Help Desk at 254-710-4357.