

Reset Code for Forgotten or Expired BearID Password

If you forget your BearID password, or it expires, you can use myBearID Portal to reset your password. If you have your cell phone in your profile, use the steps below to get a password reset code.

To reset your expired or forgotten password using a reset code, go to: <http://www.baylor.edu/bearid>, and click on “Send a password reset CODE to my cell phone or Baylor Email Address”

Set/Reset your Password

You may quickly and securely reset passwords to your accounts.

1 Enter your BearID

BearID: [\(What's a Bear ID\)](#)

[Send a password reset CODE to my cell phone or Baylor Email Address](#)
[Forgot your BearID?](#)

2 Verify your identity

Fill in the blanks on the following page, check the checkbox, and click the **Request CODE** button.

Set/Reset your Password

No worries. You may quickly and securely reset forgotten passwords to your accounts.

1 Verify your identity and request a CODE: Enter your user information

* Legal First Name:

* Legal Last Name (Surname):

* Birth Date:

* Baylor ID:

By selecting this checkbox you agree to receive text messages on your mobile device.

* Required field

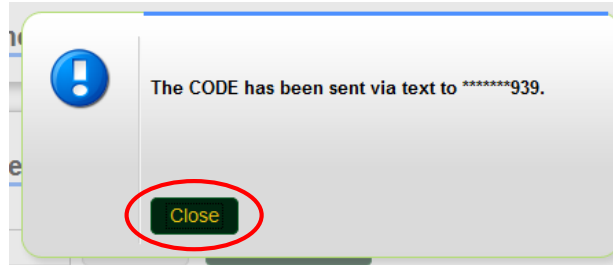
Select where you want the code to be sent and click the **Send CODE** button.

2 Select where you want the CODE to be sent

Cellphone (*****939)
 E-mail (Don*****@baylor.edu)
 Both (*****939 & Don*****@baylor.edu)

Send CODE

You will receive a message that the CODE has been sent. Click the **Close** button.



Enter the code in the blank provided and click on the **Validate** button.

3 Validate your CODE: Enter the CODE that was sent to your mobile device

CODE: **Validate** **Resend CODE**

Show CODE

Enter your new password in the blanks provided and click on the **Reset Password** button.

4 Create and confirm your new password

New Password:
Re-type Password:

Reset Password

Password Rules	Default
Mandatory	
Length: Minimum	8
Length: Maximum	32
Letters: Minimum	2
User name: Disallow contain	Yes
BearID: Disallow contain	Yes
Conditional	
Conditional rules to be satisfied	3 out of 4
Letters: Minimum upper case	1
Letters: Minimum lower case	1
Numbers: Minimum	1
Special characters: Minimum	1

If your password is accepted, you will received the following message. Click the **Exit** button. Remember to update your password for all other devices that you use to access the Baylor network, including your cell phone and/or tablet.

