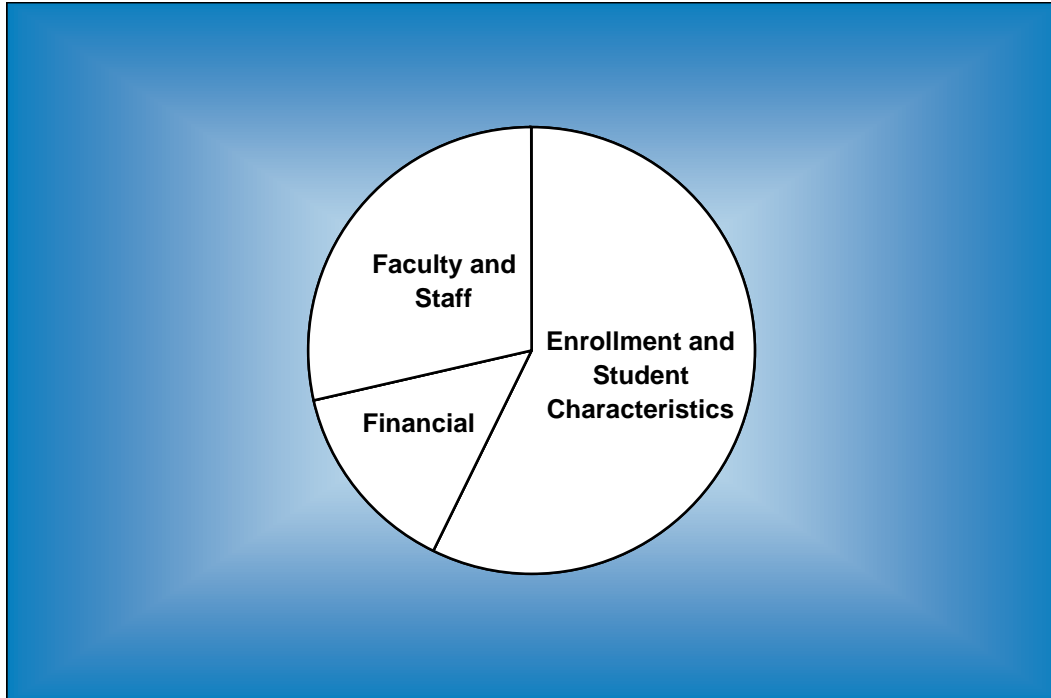


BAYLOR TRENDS



Fall 1998 - Fall 2004

Volume XVI

Prepared by the Office of Institutional Research and Testing, Spring 2005

<http://www.baylor.edu/irt/>

Table of Contents

	Page
ENROLLMENT AND STUDENT CHARACTERISTICS	
<i>New Freshman Applications and Enrollment</i>	1
<i>Transfer Applications and Enrollment</i>	1
<i>New Freshman Applications and Enrollment by Gender</i>	2
<i>New Freshman and Transfer Student Enrollment</i>	3
<i>Enrollment by Classification</i>	4
<i>Enrollment</i>	5
<i>Enrollment by Gender, Waco Campus</i>	6
<i>Enrollment by Religious Affiliation, Waco Campus</i>	7
<i>Baptist Percentage, Waco Campus</i>	7
<i>Enrollment by Racial/Ethnic Group</i>	8
<i>Racial/Ethnic Minority Percentage</i>	8
<i>Leading Texas Counties of Origin</i>	9
<i>Leading States of Origin</i>	9
<i>Percentage from Top Four Texas Counties</i>	10
<i>Percentage from Texas</i>	10
<i>Texas Enrollment by County</i>	11
<i>Enrollment by State</i>	12
<i>Countries Represented by Nonresident Aliens</i>	13
<i>Enrollment by Unit</i>	14
<i>Enrollment Percentage by Unit</i>	15
<i>Student Credit Hours by Unit, Waco Campus</i>	16
<i>Retention of First-Time Freshman Classes</i>	17
<i>Distribution of Degrees</i>	18
<i>Summary of Degrees Awarded</i>	19
<i>Degree Programs</i>	20
FACULTY AND STAFF	
<i>Full-Time Faculty Positions</i>	22
<i>Highest Degree Earned by Full-Time Faculty</i>	22
<i>Percentage of Full-Time Faculty with Tenure</i>	23
<i>Average Salaries of Full-Time Instructional Faculty on Academic Year Contracts</i>	24
<i>Average Compensation of Full-Time Instructional Faculty on Academic Year Contracts</i>	25
<i>Institutional Staff</i>	26
<i>Percentage of Institutional Staff</i>	26
<i>Full-Time Faculty by Religious Affiliation</i>	27
<i>Full-Time Staff by Religious Affiliation</i>	27

FINANCIAL

Undergraduate Tuition and Other Semester Charges 28

Undergraduate Tuition, Room and Board Charges..... 29

Annual Undergraduate Student Cost Profile..... 30

Operating Funds:

Sources of Revenues..... 31

Sources of Revenue as a Percentage of Total Revenues..... 31

Expenditures by Functions..... 32

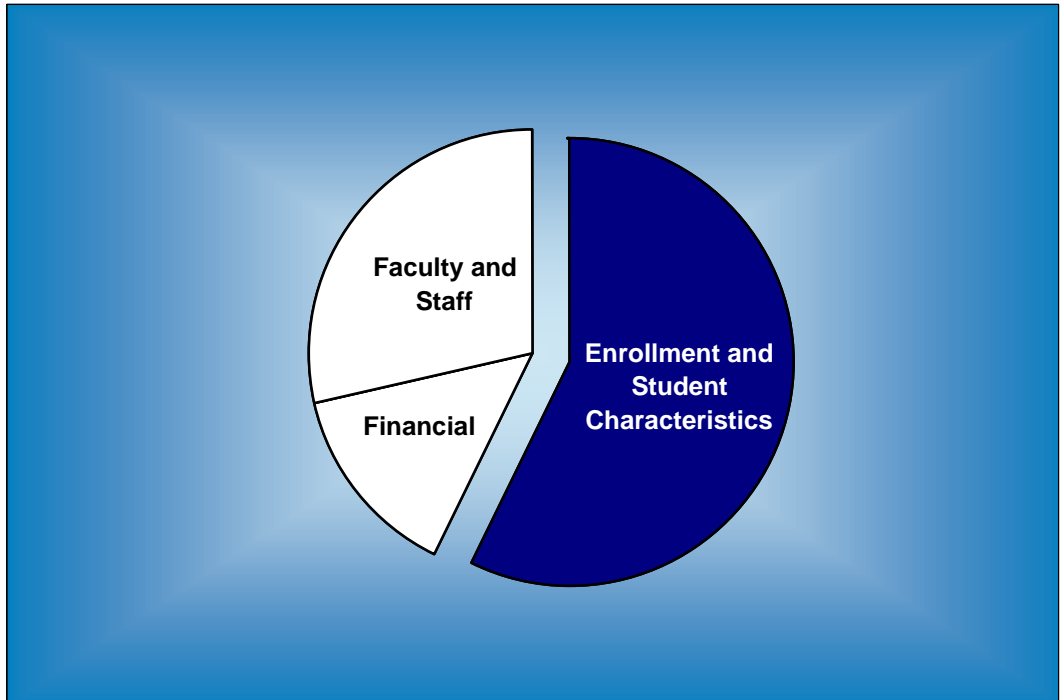
Expenditures by Functions as a Percentage of Total Expenditures 32

Endowment Fund Balance - Market Value..... 33

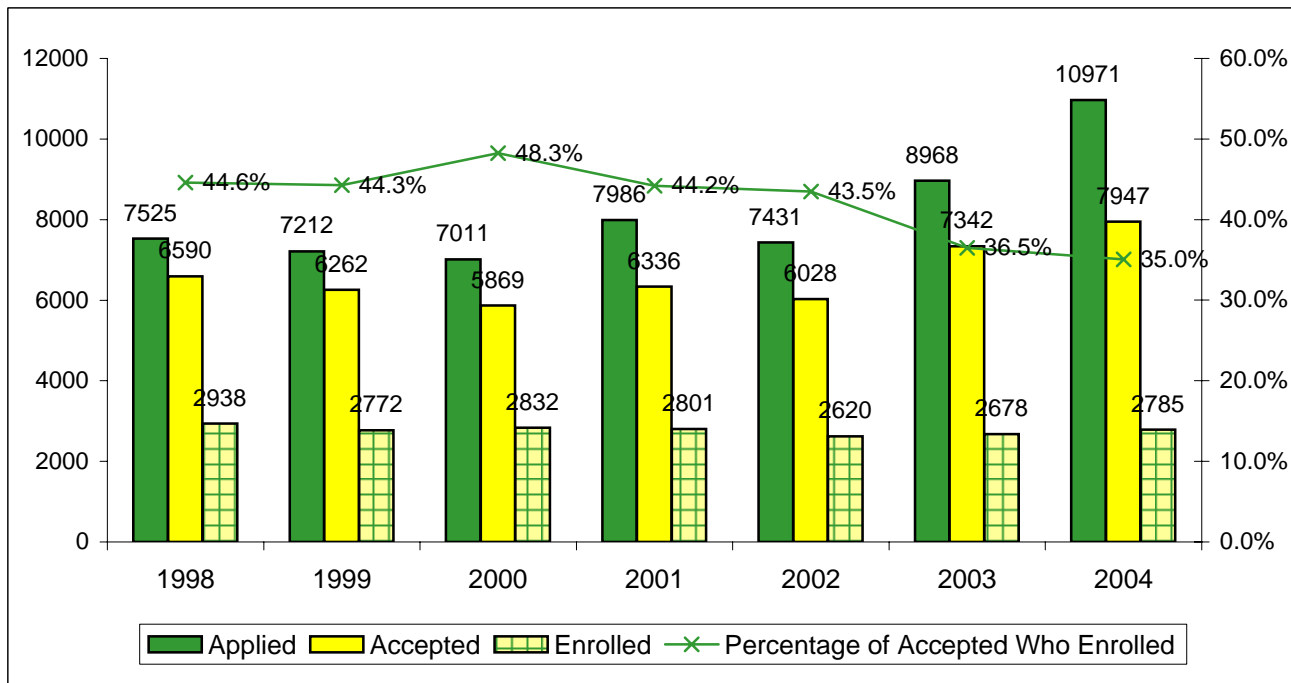
Property, Plant and Equipment 34

Assets 34

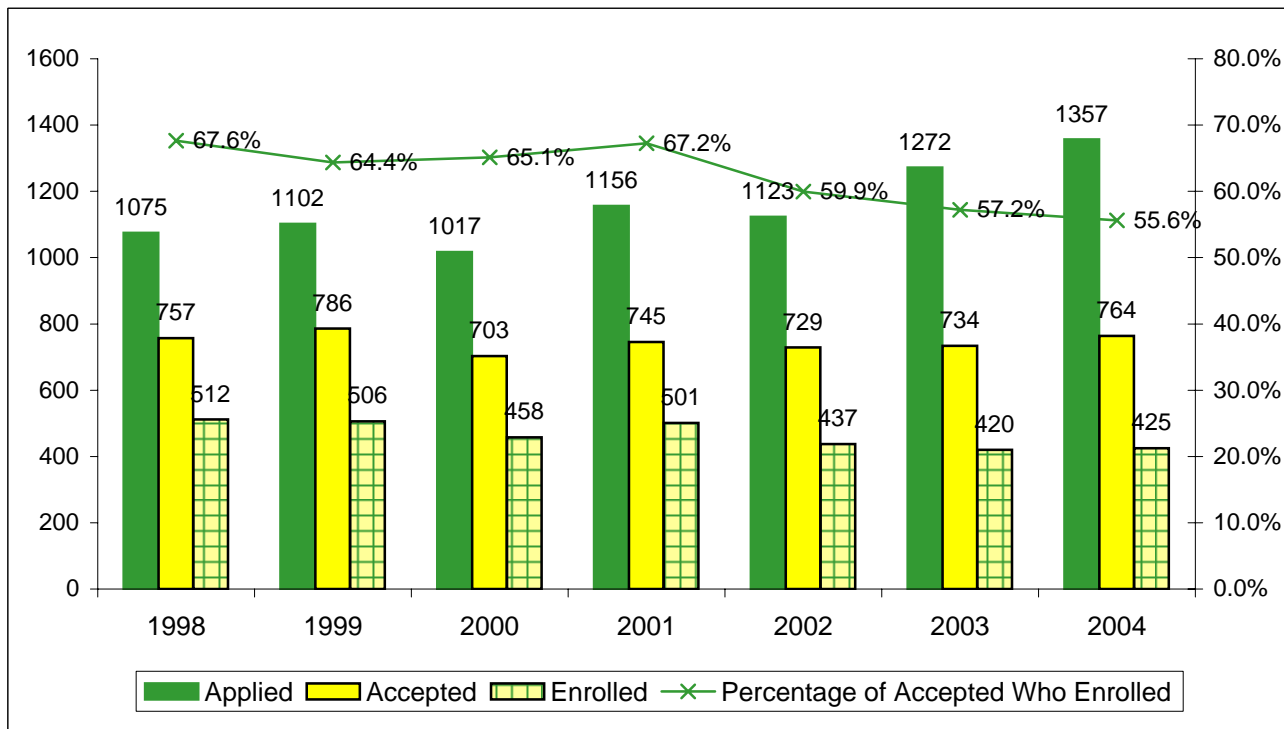
Enrollment and Student Characteristics



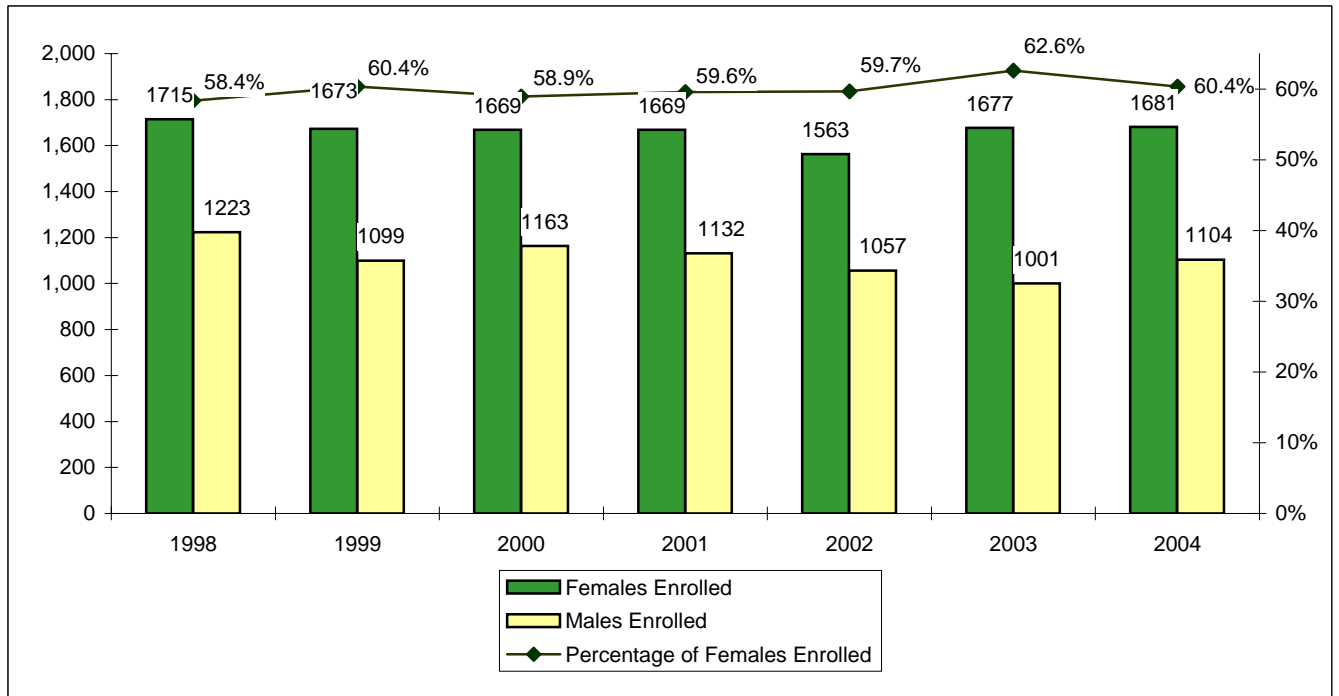
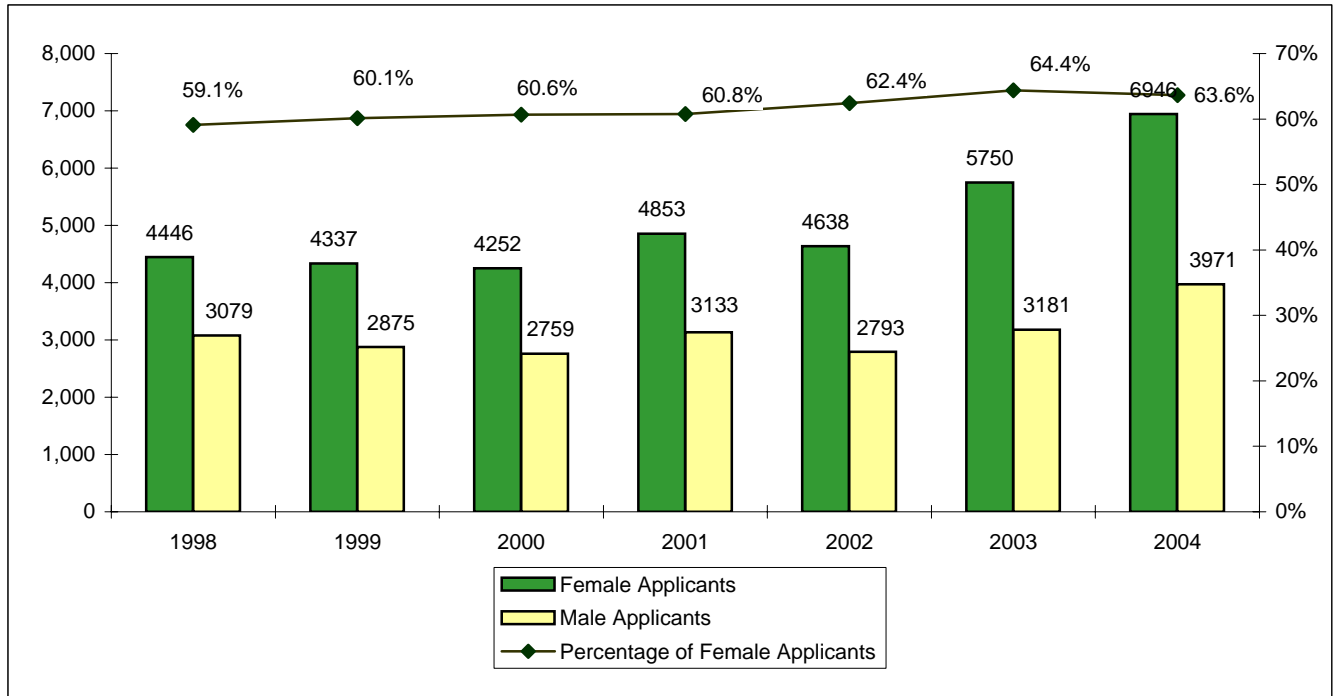
**New Freshman Applications, Acceptances and Enrollment
Fall 1998 - Fall 2004**



**Transfer Applications, Acceptances and Enrollment
Fall 1998 - Fall 2004**

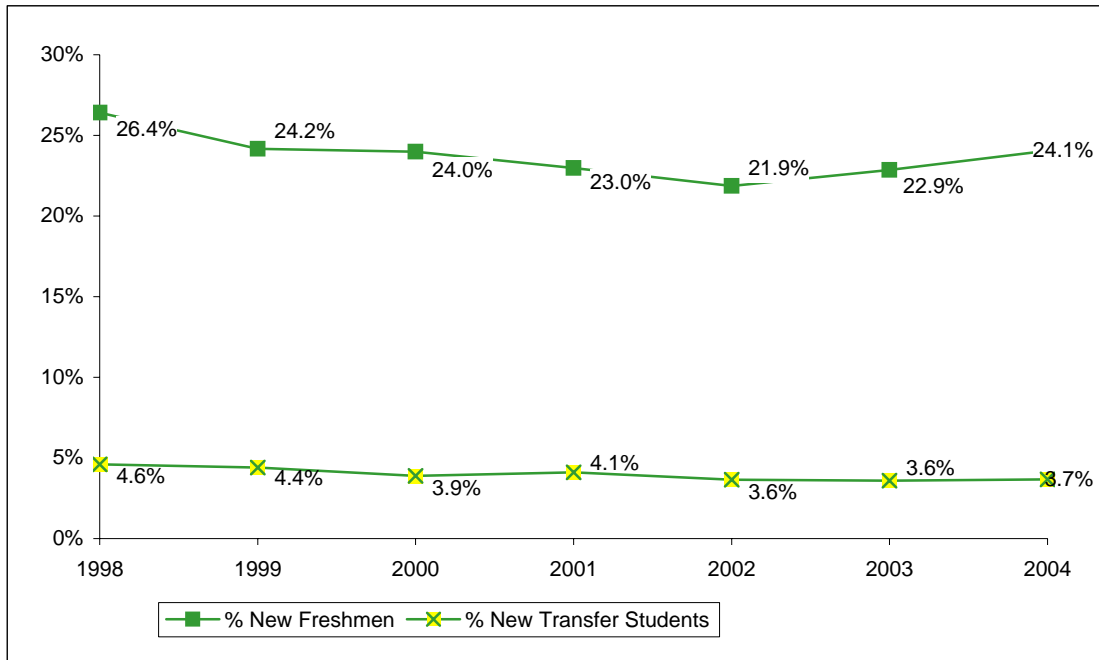


New Freshman Applications and Enrollment by Gender*
Fall 1998 - Fall 2004



*Totals of male and female applicants may not equal the total applicants displayed on the previous page, due to the fact that there are some applicants who do not provide their gender.

**New Freshman and Transfer Student Enrollment
Fall 1998 - Fall 2004**



	Fall	1998	1999	2000	2001	2002	2003	2004
New Freshmen		2,938	2,772	2,832	2,801	2,620	2,678	2,785
New Transfer Students		512	506	458	501	437	420	425
Undergraduate Enrollment		11,124	11,472	11,806	12,190	11,987	11,712	11,580
% New Freshmen		26.4%	24.2%	24.0%	23.0%	21.9%	22.9%	24.1%
% New Transfer Students		4.6%	4.4%	3.9%	4.1%	3.6%	3.6%	3.7%

Notes:

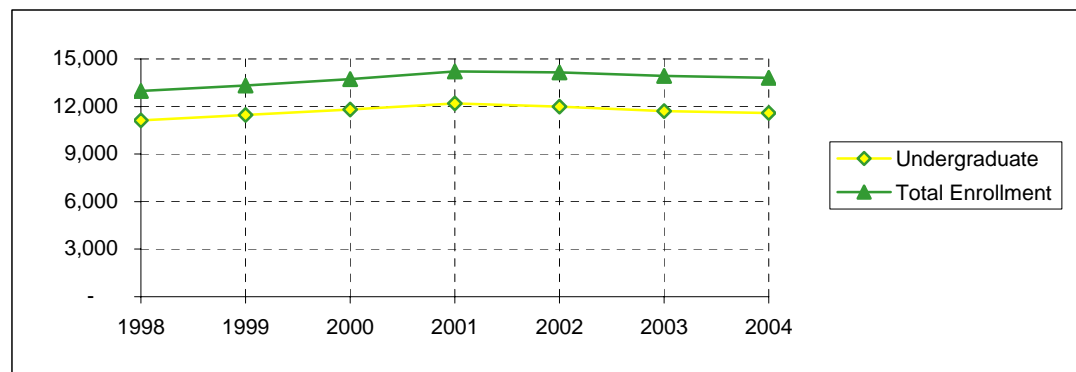
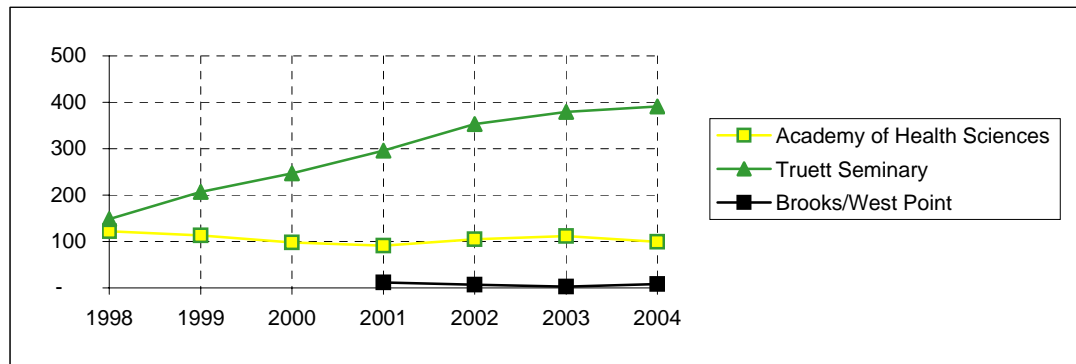
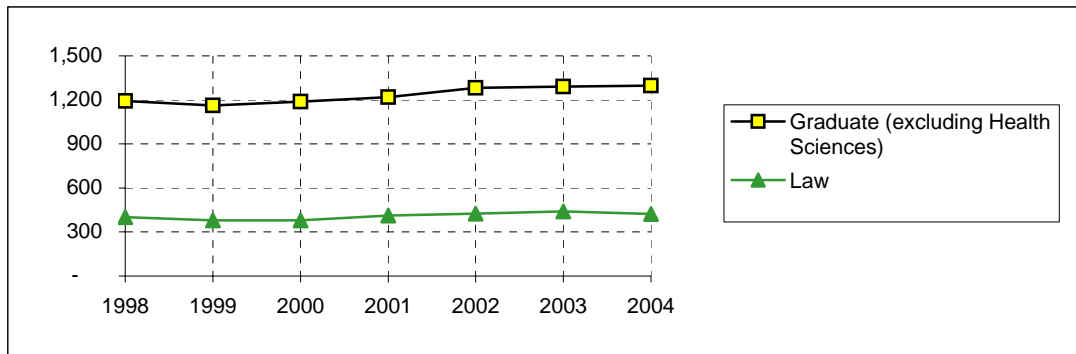
1. Freshmen who enter the University in the fall or preceding summer term are counted as "new freshmen." Similarly, transfer students entering in the fall or preceding summer term are counted as "transfer students" for the fall semester.

2. "Transfer students" refers to the entering summer/fall group of transfer students. For example, in Fall 2003 the 420 entering transfer students comprised 3.6% of the 11,712 undergraduates. However, for Fall 2003 the total number of enrolled undergraduates who had transferred into the University consisted of (a) transfers who entered in Fall 2003 and (b) students who transferred into the University in previous academic years. Generally, the total enrollment of students who had entered as transfer students is approximately 15% of the undergraduate student body.

**Enrollment by Classification
Fall 1998- Fall 2004**

	Fall	1998	1999	2000	2001	2002	2003	2004
Freshman		3,566	3,534	3,678	3,613	3,309	3,382	3,430
Sophomore		2,333	2,619	2,565	2,686	2,679	2,506	2,391
Junior		2,314	2,244	2,516	2,565	2,595	2,462	2,425
Senior		2,779	2,956	2,916	3,194	3,297	3,262	3,223
Special		28	29	26	23	22	-	-
Postbaccalaureate		104	90	105	109	85	43	79
Nondegree		-	-	-	-	-	57	32
TOTAL UNDERGRADUATE		11,124	11,472	11,806	12,190	11,987	11,712	11,580
Master's		807	760	788	802	843	845	834
Doctoral		360	373	379	397	416	427	445
Graduate Transient/Nondegree		10	6	6	11	10	10	7
Special Graduate		15	18	8	-	-	-	-
Graduate Professional			5	8	9	12	9	11
TOTAL "WACO" GRADUATE		1,192	1,162	1,189	1,219	1,281	1,291	1,297
Seminary Master's		146	190	222	260	318	337	345
Seminary Doctoral		-	17	25	34	35	41	43
Seminary Nondegree		2	-	-	2	-	1	3
TOTAL SEMINARY		148	207	247	296	353	379	391
School of Law		401	380	379	413	426	440	424
Academy of Health Sciences		122	113	98	91	105	112	99
Brooks/West Point		-	-	-	12	7	3	8
TOTAL ENROLLMENT		12,987	13,334	13,719	14,221	14,159	13,937	13,799

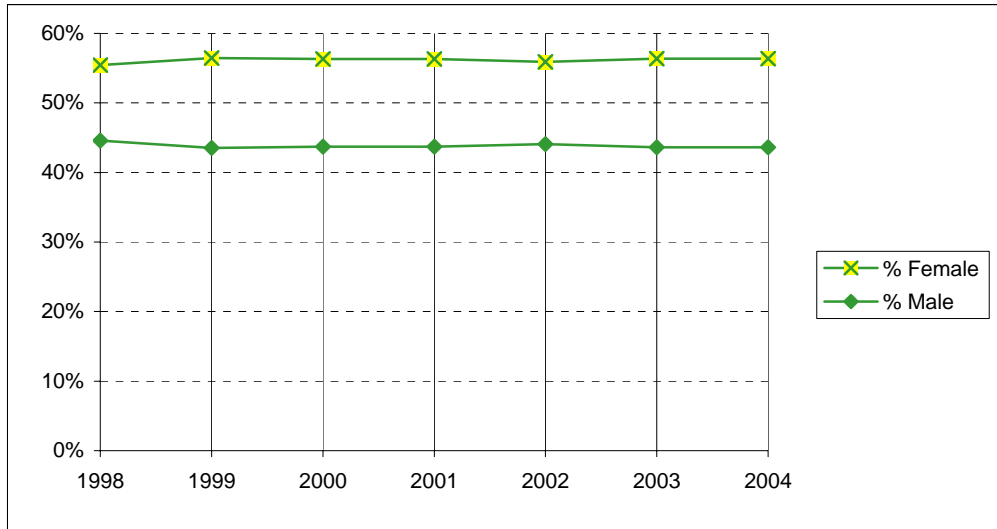
**Enrollment
Fall 1998 - Fall 2004**



Fall	1998	1999	2000	2001	2002	2003	2004
Undergraduate	11,124	11,472	11,806	12,190	11,987	11,712	11,580
Graduate (excluding Health Sciences)	1,192	1,162	1,189	1,219	1,281	1,291	1,297
Law	401	380	379	413	426	440	424
Truett Seminary	148	207	247	296	353	379	391
SUBTOTAL	12,865	13,221	13,621	14,118	14,047	13,822	13,692
Academy of Health Sciences	122	113	98	91	105	112	99
Brooks/West Point				12	7	3	8
TOTAL ENROLLMENT	12,987	13,334	13,719	14,221	14,159	13,937	13,799

Source: IRT.

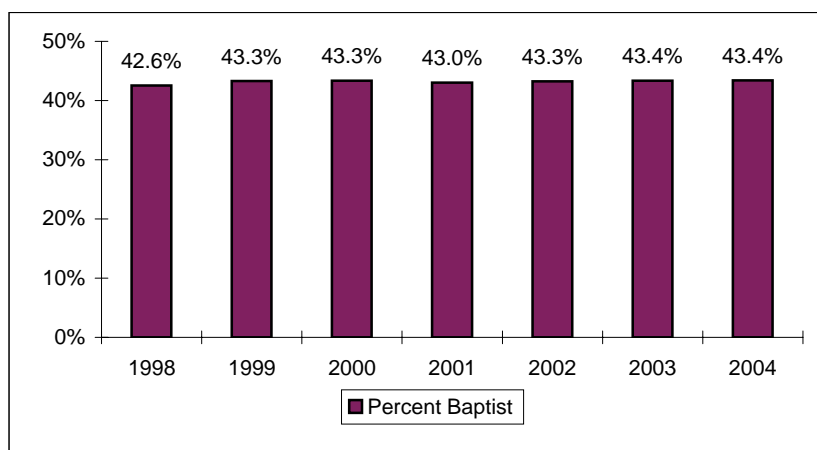
**Enrollment by Gender
(Excluding Health Sciences)
Fall 1998 - Fall 2004**



	Fall	1998	1999	2000	2001	2002	2003	2004
Female		7,131	7,467	7,670	7,950	7,854	7,790	7,717
Male		5,734	5,754	5,951	6,168	6,193	6,032	5,975
Total (excluding Health Sciences)		12,865	13,221	13,621	14,118	14,047	13,822	13,692
% Female		55.4%	56.5%	56.3%	56.3%	55.9%	56.4%	56.4%
% Male		44.6%	43.5%	43.7%	43.7%	44.1%	43.6%	43.6%

**Enrollment by Religious Affiliation (Excluding Health Sciences)
Fall 1998 - Fall 2004**

Fall	1998	1999	2000	2001	2002	2003	2004
African Methodist Episcopal	-	-	-	-	-	1	4
Anglican - Church of England	-	-	-	-	-	-	7
Assembly of God	149	153	135	135	124	125	136
Atheist	-	-	-	-	-	-	14
Baptist	5,475	5,727	5,903	6,076	6,076	5,994	5,941
Buddhist	70	72	70	77	71	60	77
Catholic	1,590	1,619	1,674	1,694	1,659	1,591	1,765
Christian Church	-	-	-	-	-	16	59
Christian Scientist	8	5	2	10	13	12	16
Church of Christ	260	254	287	279	283	253	269
Church of God	25	19	19	25	21	29	29
Church of the Nazarene	29	34	27	28	25	33	37
Congregational Church	14	16	16	23	23	21	19
Disciples of Christ (Christian)	81	89	88	73	70	76	80
Eastern Orthodox	44	27	29	31	32	35	32
Episcopalian	271	302	310	307	294	249	251
Evangelical Free Church	-	-	-	-	-	3	12
Four Square Gospel	9	7	10	9	10	11	11
Full Gospel	-	-	-	-	-	-	2
Greek Orthodox	-	-	-	-	-	4	6
Hindu	67	77	83	88	85	89	105
Independent Bible Church	-	-	-	-	-	1	12
Interdenominational	425	429	466	460	477	380	266
Jehovah's Witness	9	14	12	11	10	12	10
Jewish	-	-	-	-	-	-	9
Judaism	8	11	9	17	14	22	23
Latter Day Saints (Mormon)	22	19	21	19	23	23	36
Lutheran	383	398	396	386	388	354	343
Mennonite	5	7	7	5	6	7	10
Methodist	1,168	1,163	1,203	1,251	1,280	1,219	1,133
Missionary Alliance	-	-	-	-	-	1	2
Moslem (Islam, Muslim)	58	77	86	100	109	109	119
Non-Denominational			102	251	270	567	1,054
Pentecostal	67	80	88	106	115	107	100
Presbyterian	532	518	552	571	534	536	549
Protestant	-	-	-	-	-	3	27
Seventh Day Adventist	-	-	-	-	-	2	11
Society of Friends (Quakers)	7	5	4	4	3	1	2
Unitarian	6	8	9	8	6	7	6
United Brethren	6	8	6	4	4	3	-
United Church of Christ	-	-	-	-	-	-	2
Other/Not Specified	2,077	2,083	2,007	2,070	2,022	1,866	1,106
TOTAL RELIGION	12,865	13,221	13,621	14,118	14,047	13,822	13,692



**Enrollment by Racial / Ethnic Group*
Fall 1998 - Fall 2004**

A.

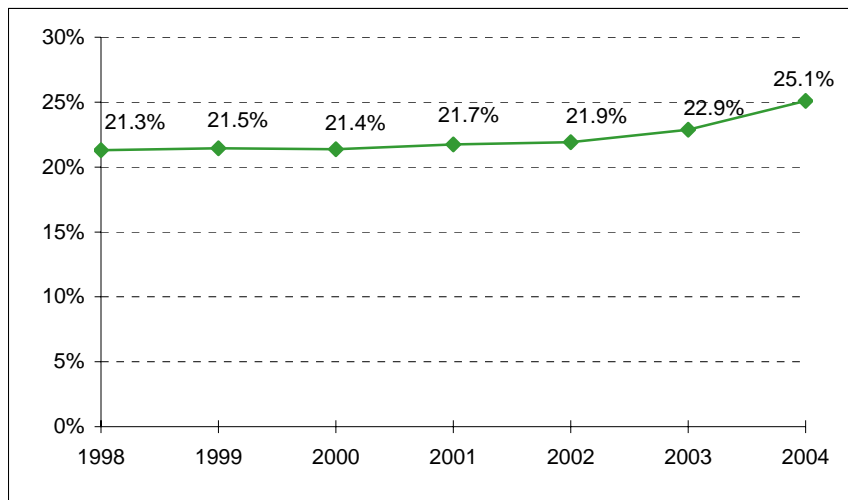
	Fall	1998	1999	2000	2001	2002	2003	2004
African American/Black		726	751	750	774	771	862	944
American Indian/Alaskan Native		74	65	64	63	75	83	80
Asian/Pacific Islander		809	847	876	903	883	865	977
Hispanic		941	959	967	1,051	1,078	1,077	1,133
White		9,995	10,278	10,671	11,033	10,919	10,541	10,318
Other		216	239	276	301	296	300	330
Not Specified		226	195	115	96	137	209	17
Total		12,987	13,334	13,719	14,221	14,159	13,937	13,799

B.

	Fall	1998	1999	2000	2001	2002	2003	2004
African American/Black		713	731	733	753	744	835	908
American Indian/Alaskan Native		73	64	64	63	75	82	79
Asian/Pacific Islander		636	648	664	669	660	666	770
Hispanic		918	936	939	1,017	1,045	1,040	1,094
White		9,934	10,225	10,612	10,967	10,854	10,476	10,248
Other		189	209	237	258	250	256	286
Not Specified		212	181	108	91	125	184	17
NONRESIDENT ALIEN		312	340	362	403	406	398	397
Total		12,987	13,334	13,719	14,221	14,159	13,937	13,799

*In Table B, nonresident aliens are partitioned as a group.

**Racial / Ethnic Minority Percentage
Fall 1998 - Fall 2004
(From Table A)**



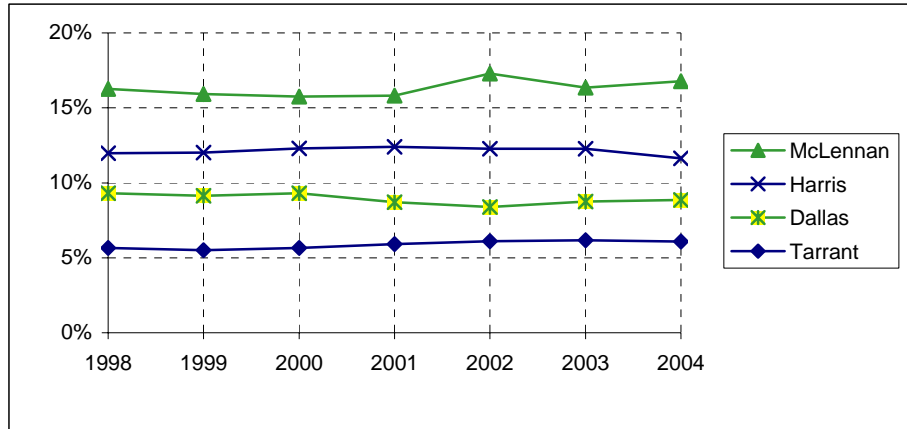
**Leading Texas Counties of Origin
Fall 1998 - Fall 2004**

Fall	1998	1999	2000	2001	2002	2003	2004
McLennan	2,112	2,124	2,161	2,248	2,448	2,279	2,315
Harris	1,556	1,601	1,687	1,763	1,738	1,711	1,605
Dallas	1,208	1,217	1,276	1,238	1,188	1,221	1,222
Tarrant	734	735	777	840	863	860	840
Bexar	570	528	532	521	475	438	464
Collin	363	431	489	505	490	459	457
Travis	267	283	304	326	331	372	385
Fort Bend	218	237	299	331	332	315	318
Montgomery	204	224	253	273	266	269	263
Bell	234	203	206	237	204	204	199
Williamson	115	133	125	138	154	171	197
Denton	145	131	131	136	160	171	180
Smith	117	128	123	149	147	138	146
Gregg	118	134	141	144	135	145	111
Galveston	98	105	119	117	119	102	109
Brazoria	64	79	90	117	115	115	99
El Paso	90	93	105	97	93	85	95
Hidalgo	107	94	81	79	85	83	90
Jefferson	87	91	88	83	78	71	87
Taylor	71	89	94	102	100	79	84
Rockwall	42	44	42	48	41	72	74
Nueces	95	91	89	98	88	83	71
Johnson	64	72	76	89	75	74	65

**Leading States of Origin
Fall 1998 - Fall 2004**

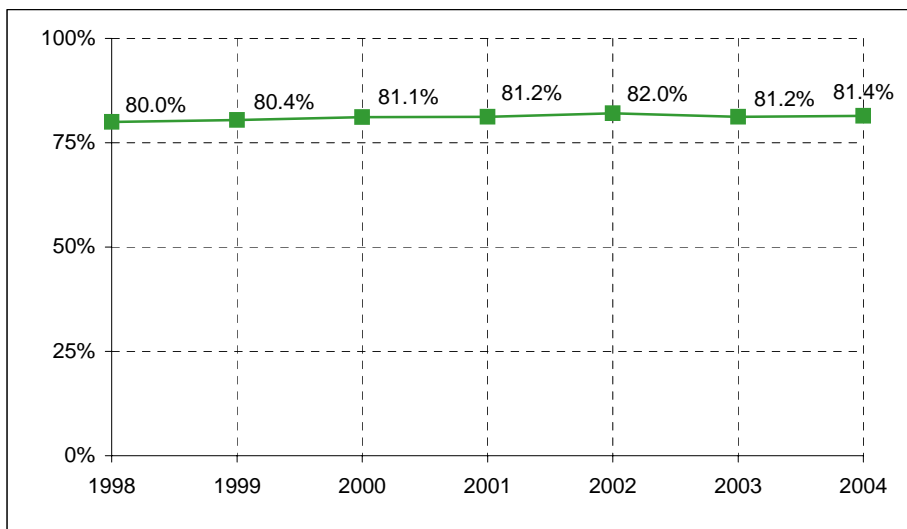
Fall	1998	1999	2000	2001	2002	2003	2004
Texas	10,386	10,726	11,128	11,553	11,613	11,316	11,233
California	273	268	250	246	227	238	255
Oklahoma	237	229	218	221	204	186	184
Louisiana	147	146	144	163	156	145	136
Colorado	135	134	134	138	137	129	132
Arkansas	122	113	118	132	129	133	122
Missouri	111	116	114	111	110	121	101
Illinois	78	73	80	88	87	103	97
Kansas	110	109	111	110	96	84	84
Florida	109	92	77	67	53	60	80
New Mexico	70	76	63	76	69	68	70
Tennessee	88	82	84	74	72	67	65

**Percentage From Top Four Texas Counties
Fall 1998 - Fall 2004**



Fall	1998	1999	2000	2001	2002	2003	2004
McLennan	16.3%	15.9%	15.8%	15.8%	17.3%	16.4%	16.8%
Harris	12.0%	12.0%	12.3%	12.4%	12.3%	12.3%	11.6%
Dallas	9.3%	9.1%	9.3%	8.7%	8.4%	8.8%	8.9%
Tarrant	5.7%	5.5%	5.7%	5.9%	6.1%	6.2%	6.1%

**Percentage From Texas
Fall 1998 - Fall 2004**



**Texas Enrollment by County
Fall 2004**

	n		n		n		n		n
Anderson	19	Crane	0	Hartley	0	Madison	4	San Patricio	15
Andrews	3	Crockett	0	Haskell	2	Marion	3	San Saba	0
Angelina	21	Crosby	0	Hays	26	Martin	1	Schleicher	0
Aransas	4	Culberson	0	Hemphill	1	Mason	0	Scurry	6
Archer	1	Dallam	1	Henderson	18	Matagorda	15	Shackelford	2
Armstrong	1	Dallas	1,222	Hidalgo	90	Maverick	19	Shelby	15
Atascosa	5	Dawson	2	Hill	35	Mc Culloch	0	Sherman	2
Austin	8	De Witt	5	Hockley	4	Mc Lennan	2,315	Smith	146
Bailey	2	Deaf Smith	1	Hood	16	Mc Mullen	0	Somervell	0
Bandera	4	Delta	1	Hopkins	21	Medina	4	Starr	4
Bastrop	6	Denton	180	Houston	7	Menard	0	Stephens	10
Baylor	1	Dickens	0	Howard	5	Midland	31	Sterling	0
Bee	6	Dimmit	3	Hudspeth	0	Milam	12	Stonewall	0
Bell	199	Donley	1	Hunt	19	Mills	1	Sutton	1
Bexar	464	Duval	0	Hutchinson	8	Mitchell	2	Swisher	2
Blanco	2	Eastland	5	Irion	0	Montague	2	Tarrant	840
Borden	0	Ector	23	Jack	2	Montgomery	263	Taylor	84
Bosque	21	Edwards	0	Jackson	4	Moore	1	Terrell	0
Bowie	24	El Paso	95	Jasper	11	Morris	11	Terry	0
Brazoria	99	Ellis	61	Jeff Davis	1	Motley	0	Throckmorton	0
Brazos	35	Erath	9	Jefferson	87	Nacogdoches	16	Titus	14
Brewster	0	Falls	23	Jim Hogg	0	Navarro	21	Tom Green	28
Briscoe	0	Fannin	4	Jim Wells	5	Newton	0	Travis	385
Brooks	2	Fayette	6	Johnson	65	Nolan	5	Trinity	4
Brown	15	Fisher	0	Jones	2	Nueces	71	Tyler	3
Burleson	2	Floyd	1	Karnes	3	Ochiltree	1	Upshur	16
Burnet	18	Foard	0	Kaufman	23	Oldham	0	Upton	0
Caldwell	7	Fort Bend	318	Kendall	20	Orange	19	Uvalde	3
Calhoun	4	Franklin	10	Kenedy	0	Palo Pinto	2	Val Verde	3
Callahan	2	Freestone	11	Kent	0	Panola	7	Van Zandt	10
Cameron	50	Frio	2	Kerr	18	Parker	37	Victoria	28
Camp	4	Gaines	0	Kimble	0	Parmer	0	Walker	8
Carson	2	Galveston	109	King	0	Pecos	2	Waller	4
Cass	16	Garza	1	Kinney	0	Polk	2	Ward	2
Castro	1	Gillespie	15	Kleberg	3	Potter	55	Washington	14
Chambers	5	Glasscock	0	Knox	1	Presidio	0	Webb	19
Cherokee	14	Goliad	2	La Salle	20	Rains	2	Wharton	15
Childress	1	Gonzales	6	Lamar	20	Randall	25	Wheeler	0
Clay	2	Gray	2	Lamb	2	Reagan	0	Wichita	24
Cochran	0	Grayson	33	Lampasas	5	Real	0	Wilbarger	4
Coke	0	Gregg	111	Lavaca	7	Red River	2	Willacy	2
Coleman	2	Grimes	5	Lee	3	Reeves	0	Williamson	197
Collin	457	Guadalupe	31	Leon	7	Refugio	1	Wilson	5
Collingsworth	0	Hale	9	Liberty	20	Roberts	0	Winkler	0
Colorado	3	Hall	1	Limestone	13	Robertson	3	Wise	9
Comal	43	Hamilton	2	Lipscomb	0	Rockwall	74	Wood	14
Comanche	4	Hansford	0	Live Oak	1	Runnels	2	Yoakum	1
Concho	2	Hardeman	0	Llano	4	Rusk	13	Young	7
Cooke	13	Hardin	24	Loving	0	Sabine	2	Zapata	1
Coryell	29	Harris	1,605	Lubbock	42	San Augustine	0	Zavala	0
Cottle	1	Harrison	30	Lynn	2	San Jacinto	3	Total	11,233

Source: ICUT.

Enrollment by State
Fall 2004



State	n
Alabama	33
Alaska	18
Arizona	62
Arkansas	122
California	255
Colorado	132
Connecticut	6
Delaware	0
District of Columbia	2
Florida	80
Georgia	58
Hawaii	15
Idaho	5
Illinois	97
Indiana	28
Iowa	21
Kansas	84

State	n
Kentucky	18
Louisiana	136
Maine	6
Maryland	18
Massachusetts	18
Michigan	16
Minnesota	35
Mississippi	37
Missouri	101
Montana	6
Nebraska	34
Nevada	1
New Hampshire	8
New Jersey	24
New Mexico	70
New York	27
North Carolina	37

State	n
North Dakota	0
Ohio	27
Oklahoma	184
Oregon	21
Pennsylvania	27
Rhode Island	5
South Carolina	20
South Dakota	12
Tennessee	65
Texas	11233
Utah	6
Vermont	0
Virginia	37
Washington	31
West Virginia	2
Wisconsin	23
Wyoming	4
Total	13,307

Countries Represented by Nonresident Aliens, Fall 1998 to Fall 2004

	Fall	1998	1999	2000	2001	2002	2003	2004		Fall	1998	1999	2000	2001	2002	2003	2004
Albania		0	0	0	0	0	1	1	Lebanon		0	0	1	2	1	2	1
Angola		0	0	0	0	1	1	2	Malaysia		4	2	2	2	1	0	1
Argentina		0	1	2	6	6	5	4	Mali		0	2	2	2	0	0	0
Armenia		0	0	0	0	0	0	1	Mauritius		1	1	1	0	0	0	0
Australia		5	3	5	5	4	3	4	Mexico		9	6	9	9	6	6	8
Austria		1	1	1	0	1	1	0	Moldova		0	0	0	0	0	1	1
Bahamas		1	2	2	2	2	2	1	Mongolia		0	0	0	0	0	1	1
Bangladesh		4	3	2	3	3	2	2	Montserrat		0	0	0	0	0	0	1
Belarus		0	0	0	0	0	1	1	Nepal		1	1	1	1	2	2	5
Belgium		2	2	1	1	1	0	0	Netherlands		1	1	1	0	1	0	0
Belize		1	1	1	1	0	1	1	New Zealand		1	1	2	1	0	0	0
Bolivia		0	0	1	1	1	1	3	Nicaragua		1	0	1	2	1	1	2
Brazil		1	4	2	5	6	6	3	Nigeria		8	8	7	10	15	19	22
Bulgaria		8	6	6	6	4	4	6	North Mariana Isle		2	1	1	1	0	0	0
Cambodia		0	0	0	1	1	0	0	Norway		3	0	1	2	2	0	1
Cameroon		0	0	0	1	1	3	1	Pakistan		1	9	8	9	10	3	2
Canada		16	15	17	16	18	18	15	Panama		1	1	0	1	2	2	0
Cayman Islands		0	0	0	1	2	2	2	Peru		0	0	0	1	1	1	2
Chile		2	2	1	0	0	0	0	Philippines		1	0	0	0	0	1	0
China*		56	62	64	65	69	72	70	Poland		2	2	2	1	1	2	2
Colombia		7	3	2	0	1	2	2	Romania		4	5	3	4	4	6	6
Congo		0	0	0	0	0	0	1	Russia		1	3	4	3	4	2	6
Coral Sea Isle Terr.		1	1	1	0	0	0	0	Rwanda		0	1	1	1	2	1	1
Costa Rica		3	4	4	5	7	8	8	Saudi Arabia		0	1	2	1	1	0	0
Croatia		1	1	0	0	2	2	1	Senegal		1	1	1	0	0	0	0
Cyprus		0	0	1	0	0	0	0	Serbia		0	0	0	1	1	0	0
Czech Republic		3	0	1	0	0	1	3	Sierra Leone		0	0	0	0	1	1	0
Dominica		0	0	0	1	1	1	0	Singapore		2	2	3	4	1	1	1
Ecuador		1	0	0	2	3	4	4	Slovakia		1	0	0	1	1	1	2
El Salvador		0	0	0	0	0	0	1	Slovenia		1	2	2	2	2	3	1
Ethiopia		0	1	1	1	0	0	0	Somalia		0	1	1	1	0	0	0
Finland		1	1	0	0	0	1	0	South Africa		3	2	1	2	5	5	1
France		4	3	6	3	4	6	8	Soviet Union		1	2	2	1	0	0	0
Georgia		0	0	0	0	3	2	0	Spain		2	2	1	1	2	3	2
Germany		3	3	6	10	7	7	8	Sri Lanka		4	5	5	6	4	4	7
Ghana		0	0	2	3	0	3	3	St Vincent & Grenadines		0	0	0	0	1	1	1
Greece		0	0	0	0	0	0	1	Sweden		5	7	5	8	4	4	5
Guatemala		0	0	1	2	2	3	1	Switzerland		4	3	2	1	0	0	0
Honduras		4	2	2	1	1	1	2	Taiwan		29	39	42	41	36	25	17
Hungary		3	3	6	6	6	4	1	Thailand		5	8	5	6	5	2	2
Iceland		2	0	0	0	0	0	0	Togo		1	1	0	0	0	0	0
India		21	24	29	32	39	40	45	Trinidad/Tobago		0	0	1	3	5	4	3
Indonesia		11	11	9	6	5	3	4	Turkey		0	2	0	0	1	2	1
Ireland		0	1	0	0	0	0	0	Uganda		0	0	0	1	3	2	2
Iran		0	0	0	0	0	0	1	Ukraine		0	1	2	5	4	1	1
Italy		0	1	1	1	2	2	2	United Arab Emirates		1	1	2	2	2	0	0
Jamaica		2	3	3	2	1	0	0	United Arab Republic		0	0	0	1	0	0	0
Japan		12	17	17	16	10	9	10	United Kingdom		9	6	5	4	8	9	8
Jordan		1	0	0	0	0	0	0	Uzbekistan		0	0	0	0	0	1	1
Kazakhstan		0	0	0	0	0	1	0	Venezuela		1	4	7	10	9	11	10
Kenya		2	3	4	6	5	3	6	Vietnam		0	0	0	2	2	4	5
Korea, Dem. People's		0	0	0	0	3	2	0	Virgin Islands (British)		1	1	1	0	0	1	1
Korea, Rep. of		21	20	23	32	29	28	29	Yemen (Sanaa)		0	0	0	0	0	1	1
Kosovo		0	0	0	0	0	0	1	Yugoslavia		0	0	0	0	0	1	0
Kuwait		0	0	0	1	1	1	0	Zimbabwe		0	0	1	2	2	1	2
Latvia		0	0	0	1	1	2	2	Unknown		0	0	0	0	0	1	0
*Hong Kong counted in China.										Total	308	337	359	399	403	393	395

Source: International Programs Report, "Annual Census of Foreign Students in the United States"

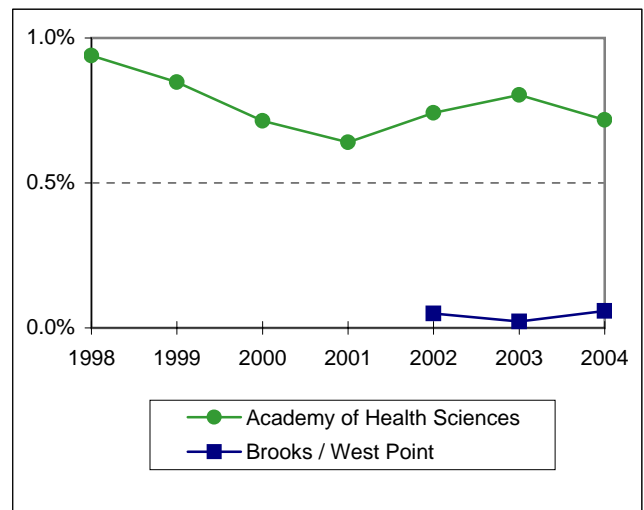
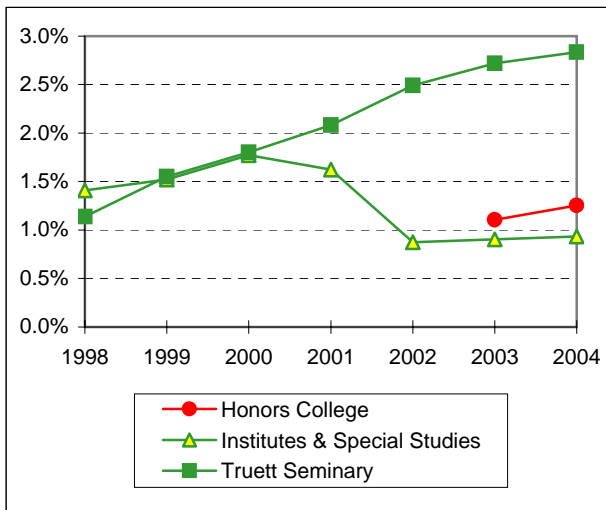
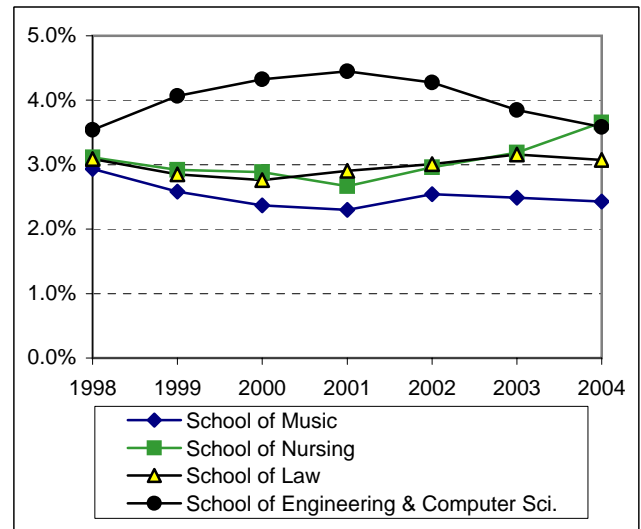
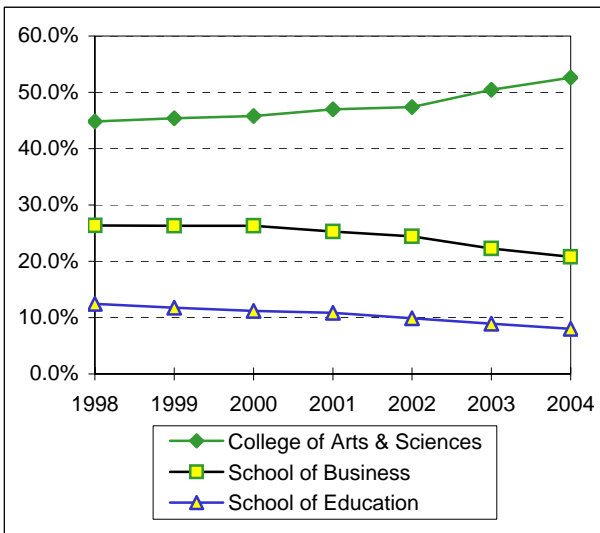
**Enrollment by Unit
Fall 1998 - Fall 2004**

	Fall	1998	1999	2000	2001	2002	2003	2004
College of Arts & Sciences		5,823	6,056	6,281	6,684	6,713	7,035	7,257
School of Business		3,421	3,508	3,609	3,598	3,463	3,105	2,872
School of Education		1,619	1,568	1,534	1,546	1,397	1,246	1,105
School of Engineering & Computer Sci.		460	542	593	633	605	536	495
School of Music		381	344	325	327	360	347	335
School of Nursing		404	389	396	379	419	444	504
Honors College						177	154	173
Institutes & Special Studies		183	203	243	231	124	126	129
Graduate School		25	24	14	11	10	10	7
School of Law		401	380	379	413	426	440	424
Truett Seminary		148	207	247	296	353	379	391
Academy of Health Sciences		122	113	98	91	105	112	99
Brooks / West Point					12	7	3	8
TOTAL		12,987	13,334	13,719	14,221	14,159	13,937	13,799

Notes:

1. The enrollment for the Graduate School reflects students classified as "No Major."
2. A new doctoral program in Physical Therapy was added in 2001. This program is administered through the Brooks and West Point academies.
3. The Honors College was established in 2002.

**Enrollment Percentage by Unit
Fall 1998 - Fall 2004**



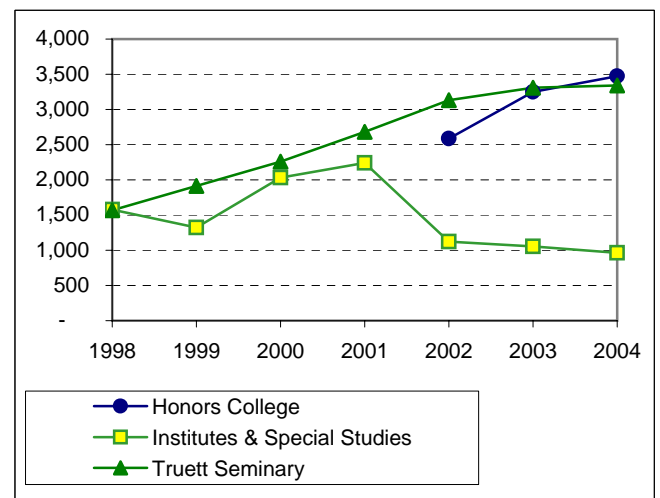
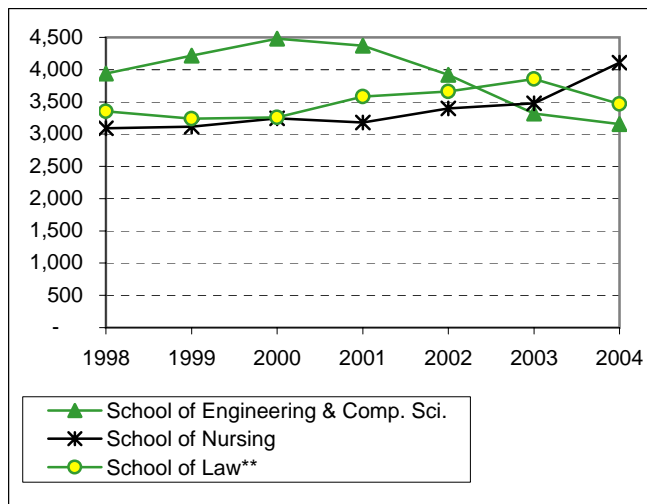
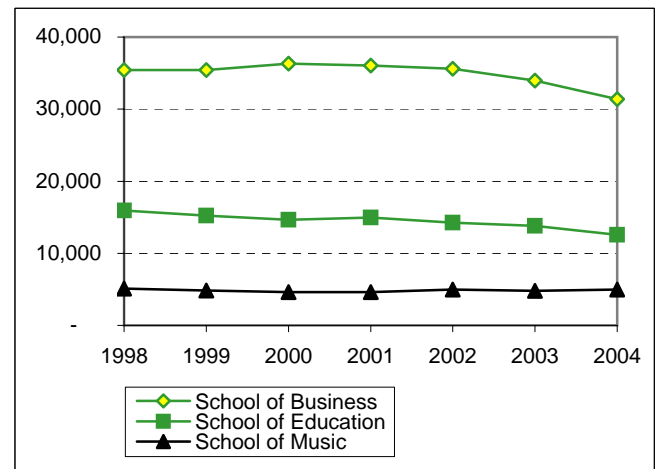
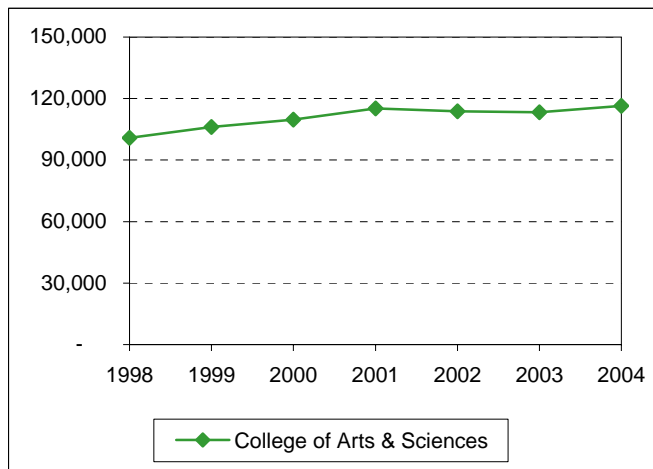
	Fall	1998	1999	2000	2001	2002	2003	2004
College of Arts & Sciences		44.8%	45.4%	45.8%	47.0%	47.4%	50.5%	52.6%
School of Business		26.3%	26.3%	26.3%	25.3%	24.5%	22.3%	20.8%
School of Education		12.5%	11.8%	11.2%	10.9%	9.9%	8.9%	8.0%
School of Engineering & Computer Sci.		3.5%	4.1%	4.3%	4.5%	4.3%	3.8%	3.6%
School of Music		2.9%	2.6%	2.4%	2.3%	2.5%	2.5%	2.4%
School of Nursing		3.1%	2.9%	2.9%	2.7%	3.0%	3.2%	3.7%
Honors College							1.1%	1.3%
Institutes & Special Studies		1.4%	1.5%	1.8%	1.6%	0.9%	0.9%	0.9%
Graduate School					0.1%	0.1%	0.1%	0.1%
School of Law		3.1%	2.8%	2.8%	2.9%	3.0%	3.2%	3.1%
Truett Seminary		1.1%	1.6%	1.8%	2.1%	2.5%	2.7%	2.8%
Academy of Health Sciences		0.9%	0.8%	0.7%	0.6%	0.7%	0.8%	0.7%
Brooks / West Point						0.0%	0.0%	0.1%

See Notes, page 14.

Source: IRT.

**Student Credit Hours by Unit*
(Excluding Health Sciences)
Fall 1998 - Fall 2004**

	Fall	1998	1999	2000	2001	2002	2003	2004
College of Arts & Sciences		100,794	106,150	109,742	115,178	113,781	113,299	116,430
School of Business		35,429	35,429	36,307	36,057	35,600	33,980	31,387
School of Education		15,930	15,225	14,640	14,963	14,272	13,790	12,551
School of Engineering & Comp. Sci.		3,938	4,219	4,480	4,372	3,919	3,321	3,153
School of Music		5,123	4,856	4,617	4,605	4,994	4,797	4,961
School of Nursing		3,089	3,114	3,245	3,180	3,399	3,479	4,107
Honors College						2,588	3,249	3,474
Institutes & Special Studies		1,576	1,324	2,033	2,240	1,122	1,056	963
School of Law**		3,353	3,238	3,260	3,580	3,660	3,857	3,470
Truett Seminary		1,568	1,912	2,260	2,683	3,130	3,311	3,343
TOTAL		170,800	175,467	180,583	186,858	186,465	184,139	183,839

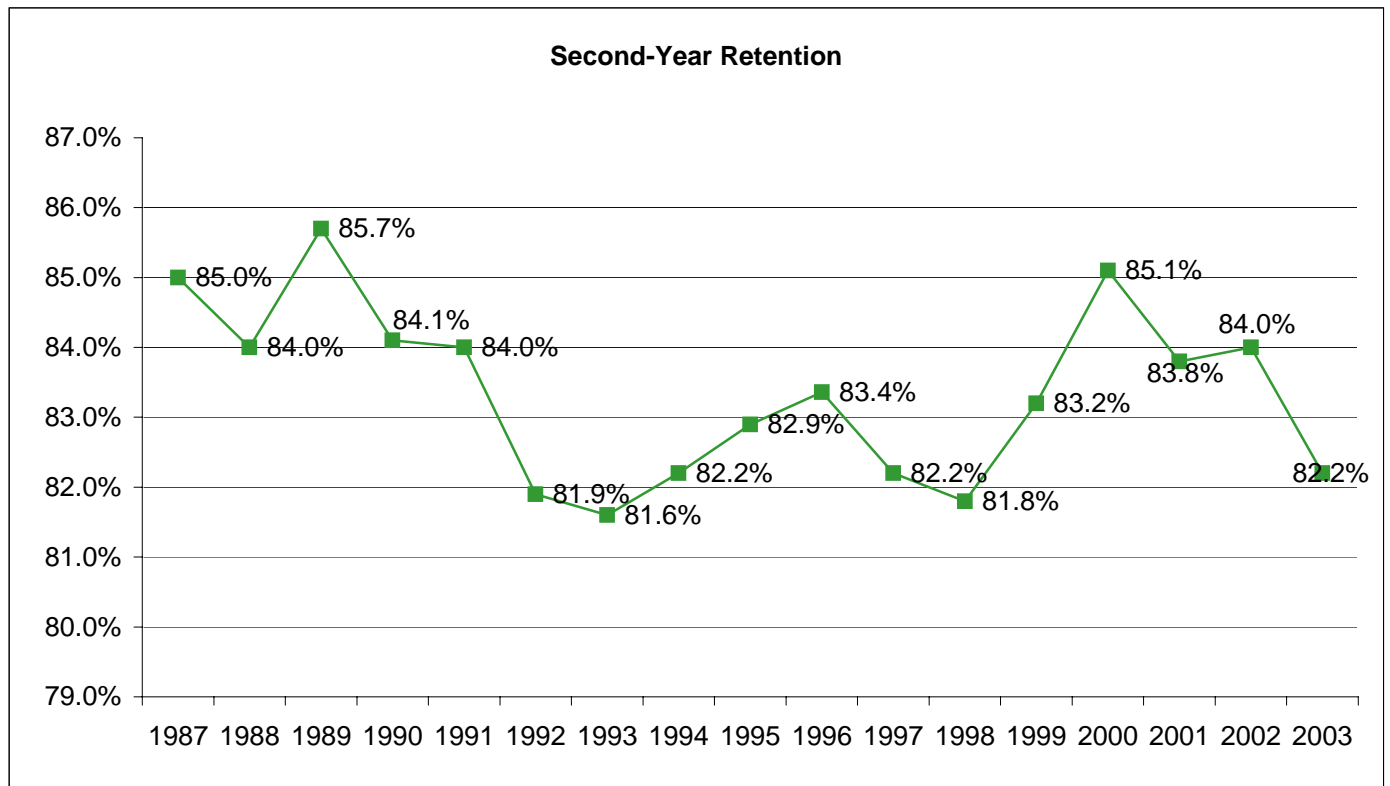


*BIC courses have been credited to the department of the instructor. See additional notes on page 14.

**Quarter hours converted to semester hours.

Retention of First-Time Freshman Classes Entering Fall 1987 - Fall 2003

First-Time Freshman Class of:	After 1 year		After 2 years		After 3 years			After 4 years			After 5 years			After 6 years		
	Cont.	Drop.	Cont.	Drop.	Cont.	Drop.	Grad.	Cont.	Drop.	Grad.	Cont.	Drop.	Grad.	Cont.	Drop.	Grad.
1987	85.0%	15.0%	75.6%	24.4%	71.7%	27.1%	1.2%	24.2%	28.2%	47.6%	3.4%	28.3%	68.3%	1.1%	28.2%	70.7%
1988	84.0%	16.0%	75.5%	24.5%	72.5%	26.5%	1.0%	29.8%	28.3%	41.9%	3.3%	28.5%	68.2%	0.8%	27.9%	71.3%
1989	85.7%	14.3%	74.8%	25.2%	71.2%	27.7%	1.1%	28.3%	28.9%	42.8%	3.9%	28.9%	67.2%	1.2%	28.8%	70.0%
1990	84.1%	15.9%	73.0%	27.0%	69.8%	29.0%	1.2%	28.1%	29.6%	42.3%	4.2%	30.0%	65.8%	1.6%	29.4%	69.0%
1991	84.0%	16.0%	74.5%	25.5%	70.7%	28.2%	1.1%	26.5%	29.6%	43.9%	3.8%	29.7%	66.5%	1.3%	29.0%	69.7%
1992	81.9%	18.1%	71.5%	28.5%	67.2%	31.5%	1.4%	28.4%	32.3%	39.3%	4.8%	32.0%	63.2%	0.9%	32.2%	66.9%
1993	81.6%	18.4%	72.0%	28.0%	68.4%	30.4%	1.2%	27.5%	32.3%	40.2%	4.5%	32.3%	63.2%	1.3%	31.8%	66.9%
1994	82.2%	17.8%	72.3%	27.7%	68.5%	30.1%	1.4%	27.0%	31.1%	41.9%	4.9%	31.9%	63.2%	1.5%	31.8%	66.7%
1995	82.9%	17.1%	76.0%	24.0%	71.4%	27.2%	1.4%	28.8%	28.3%	42.9%	4.4%	28.5%	67.1%	1.2%	28.0%	70.8%
1996	83.4%	16.6%	74.8%	25.2%	72.2%	26.9%	0.9%	29.4%	27.7%	42.9%	4.0%	27.6%	68.4%	1.3%	27.0%	71.7%
1997	82.2%	17.8%	73.7%	26.3%	70.3%	28.4%	1.2%	30.0%	29.9%	40.1%	4.9%	29.0%	66.1%	1.4%	28.5%	70.2%
1998	81.8%	18.2%	75.0%	25.0%	71.1%	27.1%	1.7%	28.9%	28.1%	43.0%	4.6%	29.4%	66.0%	1.4%	26.8%	71.9%
1999	83.2%	16.8%	75.5%	24.5%	70.7%	27.5%	1.8%	27.7%	27.0%	45.3%	3.9%	27.0%	69.1%			
2000	85.1%	14.9%	77.9%	22.1%	74.3%	25.0%	0.8%	26.4%	24.6%	49.0%						
2001	83.8%	16.2%	75.7%	24.3%	73.3%	25.3%	1.4%									
2002	84.0%	16.0%	76.3%	23.7%												
2003	82.2%	17.8%														
Average	83.4%	16.6%	74.6%	25.4%	70.9%	27.9%	1.3%	27.9%	29.0%	43.1%	4.2%	29.5%	66.3%	1.3%	29.1%	69.7%

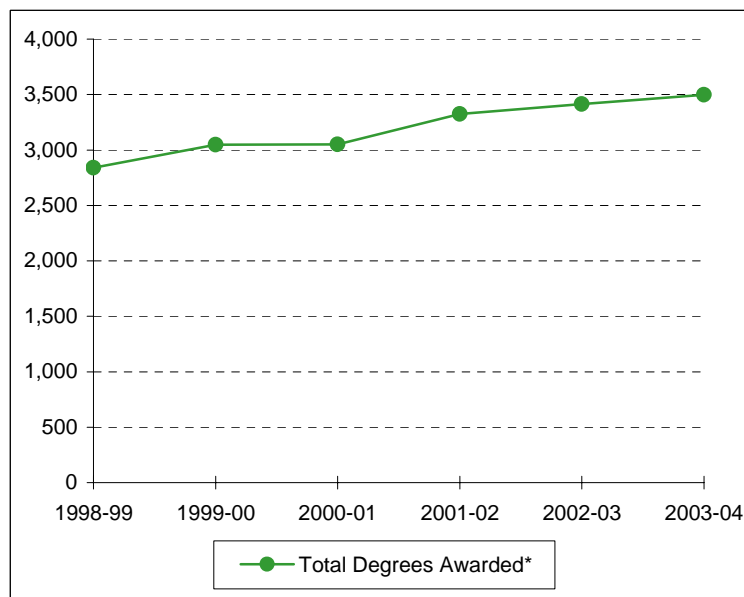
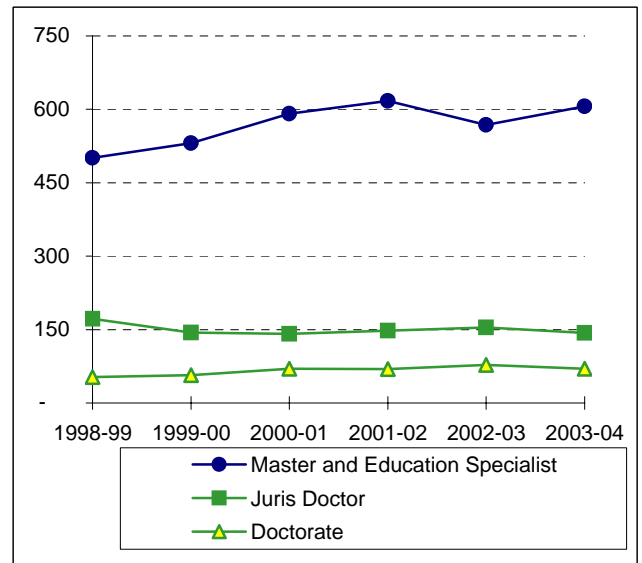
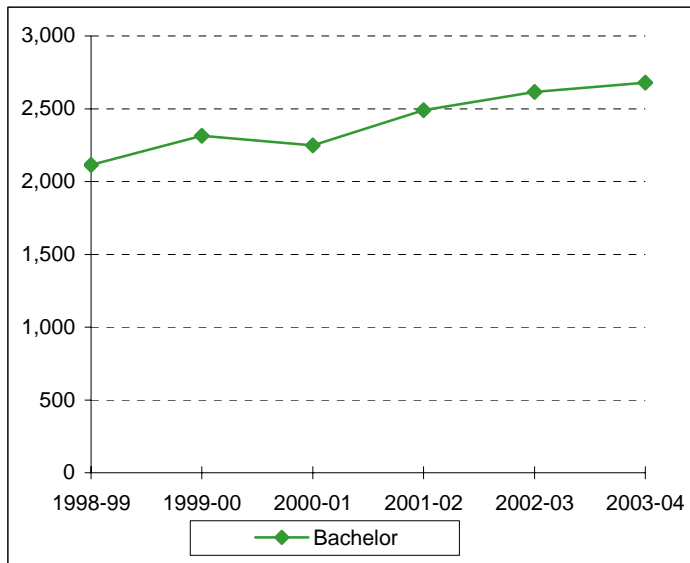


**Distribution of Degrees (Duplicated Count*)
1998-99 through 2003-04**

	1998-99	1999-00	2000-01	2001-02	2002-03	2003-04
Bachelor of Arts	871	910	811	997	1036	1090
Bachelor of Business Administration	865	951	1002	1009	1028	1019
Bachelor of Fine Arts	16	26	31	37	40	40
Bachelor of Music	26	24	22	30	29	27
Bachelor of Music Education	18	30	24	18	28	15
Bachelor of Science	131	135	142	165	200	229
Bachelor of Science in Aviation Sciences	5	5	8	13	8	10
Bachelor of Science in Computer Science	21	38	24	24	35	20
Bachelor of Science in Education	355	415	350	350	345	363
Bachelor of Science in Electrical & Computer Engineering					23	25
Bachelor of Science in Engineering	24	24	28	41	7	2
Bachelor of Science in Family & Consumer Sciences	37	38	42	59	73	102
Bachelor of Science in Informatics			1	8	17	16
Bachelor of Science in Mechanical Engineering					12	15
Bachelor of Science in Nursing	98	85	97	86	90	85
TOTAL BACHELOR DEGREES	2467	2681	2582	2837	2971	3058
Master of Accountancy	10	18	35	39	35	47
Master of Arts	62	61	58	66	56	77
Master of Business Administration	109	103	158	149	105	95
Master of Business Admin. in International Management	1	0	3	1	0	
Master of Clinical Gerontology	6	2	4	4	7	
Master of Divinity	16	48	36	33	51	71
Master of Environmental Studies	5	2	1	0	1	2
Master of Fine Arts	2	3	2	2	0	1
Master of Health Administration	59	48	47	39	38	37
Master of International Journalism	1	0	0	1	1	2
Master of International Management	1	0	1	0	0	1
Master of Music	25	24	22	22	31	23
Master of Physical Therapy	18	22	19	21	18	17
Master of Public Policy and Administration	2	7	4	4	2	6
Master of Science	32	25	25	21	34	22
Master of Science in Clinical Psychology	7	12	11	8	11	11
Master of Science in Communication Sciences & Disorders	40	42	37	28	26	33
Master of Science in Economics	7	5	5	6	4	10
Master of Science in Education	74	59	43	83	64	77
Master of Science in Gerontology	7	7	9	7	12	0
Master of Science in Information Systems	5	19	27	31	18	14
Master of Science in Limnology	1	0	1	0	0	0
Master of Science in Nursing	3	7	10	14	13	21
Master of Social Work			17	27	29	25
Master of Taxation	8	18	9	6	10	10
TOTAL MASTER'S DEGREES	501	532	584	612	566	602
TOTAL EDUCATION SPECIALIST DEGREES	1	0	7	6	4	4
TOTAL JURIS DOCTOR DEGREES	172	144	141	148	154	143
Doctor of Education	17	21	31	18	25	23
Doctor of Ministry				2	7	3
Doctor of Philosophy	26	25	31	26	31	34
Doctor of Psychology	10	11	8	11	11	7
Doctor of Science in Physical Therapy				12	4	3
TOTAL DOCTORAL DEGREES	53	57	70	69	78	70
TOTAL DEGREES AWARDED	3194	3414	3384	3672	3773	3877

*Degree information on this page is reported beginning with the Summer semester and including the following Fall and Spring terms. An individual graduate with multiple majors is counted as a whole graduate in each major area of study (i.e., duplicated count).

**Summary of Degrees Awarded (Unduplicated Count*)
1998-99 through 2003-04**



Degree Level:	1998-99	1999-00	2000-01	2001-02	2002-03	2003-04
Bachelor	2,115	2,315	2,249	2,491	2,615	2,679
Master and Education Specialist	501	531	591	617	568	606
Juris Doctor	172	144	141	148	154	143
Doctorate	53	57	70	69	78	70
Total Degrees Awarded*	2,841	3,047	3,051	3,325	3,415	3,498

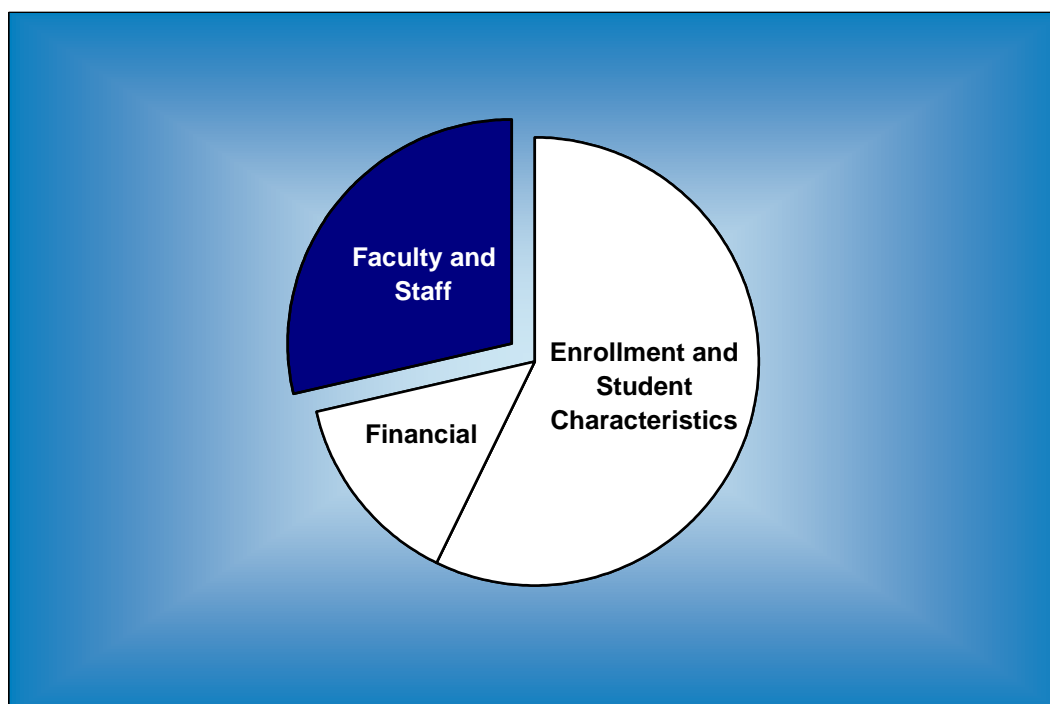
*The information on this page indicates the number of degree recipients (i.e., unduplicated count). Degree information is reported beginning with the Summer semester and including the following Fall and Spring terms.

Degree Programs (as of May 2005)

Accounting (BBA)	Communication Sci. & Disorders (MSCSD)	Fashion Design (BSFCS)
Accounting (MAcc)	Communication Specialist (BA)	Fashion Merchandising (BA)
Advanced Neonatal Nursing (MSN)	Communication Studies (MA)	Fashion Merchandising (BSFCS)
Advanced Nursing Leadership (MSN)	Community Health (BSEd)	Finance (BBA)
American Studies (BA)	Composition (BM)	Financial Services / Planning (BBA)
American Studies (MA)	Composition (MM)	Forensic Science (BS)
Anthropology (BA)	Computer Information Systems (BBA)	Forestry (BA)
Applied Mathematics (BS)	Computer Information Systems-CIS (BSEd)	Forestry (BS)
Applied Music (BM)	Computer Science (BA)	French (BA)
Archaeology (BA)	Computer Science (BSCS)	General Family & Consumer Sci. (BA)
Architecture (BA)	Computer Science (MS)	General Family & Consumer Sci. (BSFCS)
Art All-Level (BSEd)	Conducting (MM)	General Studies in HHPR (BSEd)
Art History (BA)	Curriculum & Instruction (EdD)	Geography (BA)
Asian Studies (BA)	Curriculum & Instruction (MA)	Geology (BS)
Athletic Training (BSEd)	Curriculum & Instruction (MSEd)	Geology (MS)
Aviation Sciences (BSAvSc)	Dentistry (BA)	Geology (PhD)
Basic Business (BBA)	Dentistry (BS)	Geophysics (BS)
Biblical & Related Languages (BA)	Design (BFA)	German (BA)
Biochemistry (BA)	Directing (MFA)	Great Texts of the Western Tradition (BA)
Biochemistry (BS)	Early Childhood - Grad 4 (BSEd)	Greek (BA)
Bioinformatics (BSI)	Earth Science (BA)	Health Care Administration (MHA)
Biology (BA)	Earth Science (MA)	Health, Human Performance, & Recreation (MSEd)
Biology (BS)	Economics (BA)	Health Science Studies (BSEd)
Biology (MA)	Economics (BBA)	History (BA)
Biology (MS)	Economics (BS)	History (MA)
Biology (PhD)	Economics (MSEco)	History 8-12 (BSEd)
Biomedical Engineering (MSBME)	Educational Administration (EdS)	Human Resources Management (BBA)
Biomedical Studies (MS)	Educational Administration (MSEd)	Information Systems Management (MBA)
Biomedical Studies (PhD)	Educational Psychology (EdS)	Information Systems (MSIS)
Business Administration (BA)	Educational Psychology (MA)	Instrumental Music (BME)
Business Administration (BSEd)	Educational Psychology (MSEd)	Interior Design (BA)
Business Administration (MBA)	Educational Psychology (PhD)	Interior Design (BSFCS)
Business - Broadcasting (BBA)	Electrical & Computer Engineering (BSECE)	International Business (BBA)
Business - Journalism (BBA)	Electrical & Computer Engineering (MSECE)	International Economics (MA)
Chemistry (BA)	Engineering (BSE)	International Economics (MS)
Chemistry (BS)	Engineering (ME)	International Journalism (MIJ)
Chemistry (MS)	English (BA)	International Management (MBA)
Chemistry (PhD)	English (MA)	International Management (MBAIM)
Child & Family Studies (BA)	English (PhD)	International Relations (MA)
Child & Family Studies (BSFCS)	English 4-8 (BSEd)	International Studies (BA)
Choral Music (BME)	English 8-12 (BSEd)	Journalism (BA)
Church Music (BM)	Entrepreneurship (BBA)	Journalism (MA)
Church Music (MM)	Environmental Biology (MS)	Language and Linguistics (BA)
Church Recreation (BSEd)	Environmental Science (BS)	Latin American Studies (BA)
Church-State Studies (MA)	Environmental Studies (BA)	Latin (BA)
Church-State Studies (PhD)	Environmental Studies (BS)	Law (JD)
Classics (BA)	Environmental Studies (MES)	Life Science 8-12 (BSEd)
Clinical Laboratory Science (BS)	Environmental Studies (MS)	Limnology (MSL)
Clinical Psychology (MSCP)	Exercise, Nutrition & Preventive Health (PhD)	Management (BBA)
Clinical Psychology (PsyD)	Exercise Physiology (MSEd)	Marketing (BBA)
Communication Sci. & Disorders (BA)	Family Nurse Practitioners (MSN)	Mathematics (BA)
Communication Sci. & Disorders (MA)	Fashion Design (BA)	Mathematics (BS)

Mathematics (MS)	Professional Writing (BA)
Mathematics (PhD)	Psychology (BA)
Mathematics 4-8 (BSEd)	Psychology (BS)
Mathematics 8-12 (BSEd)	Public Administration (BBA)
Mechanical Engineering (BSME)	Public Policy & Administration (MPPA)
Mechanical Engineering (MSME)	Real Estate (BBA)
Medicine (BA)	Recreation (BSEd)
Medicine (BS)	Religion (BA)
Ministry (DMin)	Religion (MA)
Museum Studies (BA)	Religion (PhD)
Museum Studies (BS)	Religion, Politics and Society (PhD)
Museum Studies (MA)	Risk Management and Insurance (BBA)
Music (BA)	Russian (BA)
Music Education (MM)	Science 4-8 (BSEd)
Music History & Literature (BM)	Slavic and East European Studies (BA)
Music History & Literature (MM)	Social Studies 4-8 (BSEd)
Music Theory (MM)	Social Studies 8-12 (BSEd)
Neuroscience (BS)	Social Work (BSW)
Neuroscience (MA)	Social Work (MSW)
Neuroscience (PhD)	Sociology (BA)
Nursing (BSN)	Sociology (MA)
Nutrition Sciences (BA)	Sociology (PhD)
Nutrition Sciences (BS)	Spanish (BA)
Nutrition Sciences (BSFCS)	Spanish (MA)
Operations Management (BBA)	Spanish All-Level (BSEd)
Optometry (BA)	Special Education All-Level (BSEd)
Optometry (BS)	Speech Communication (BA)
Pedagogy (BM)	Sports, Sponsorship & Sales (BBA)
Performance (BFA)	Statistics (MA)
Performance (MM)	Statistics (PhD)
Philosophy (BA)	Studio Art (BA)
Philosophy (MA)	Studio Art (BFA)
Philosophy (PhD)	Taxation (MT)
Physical Education All-Level (BSEd)	Telecommunication (BA)
Physical Science 8-12 (BSEd)	Theater Arts (BA)
Physical Therapy (DPT)	Theater Arts (MA)
Physical Therapy (DScPT)	Theological Studies (MTS)
Physics (BA)	Theology (MDiv)
Physics (BS)	Theory (BM)
Physics (MA)	University Scholars (BA)
Physics (MS)	
Physics (PhD)	
Piano Accompanying (MM)	
Piano Pedagogy & Performance (MM)	
Political Science (BA)	
Political Science (MA)	
Pre-Business	
Pre-Education	
Pre-Forensic Science	
Pre-Nursing	
Pre-Social Work	
Professional Selling (BBA)	

Faculty and Staff



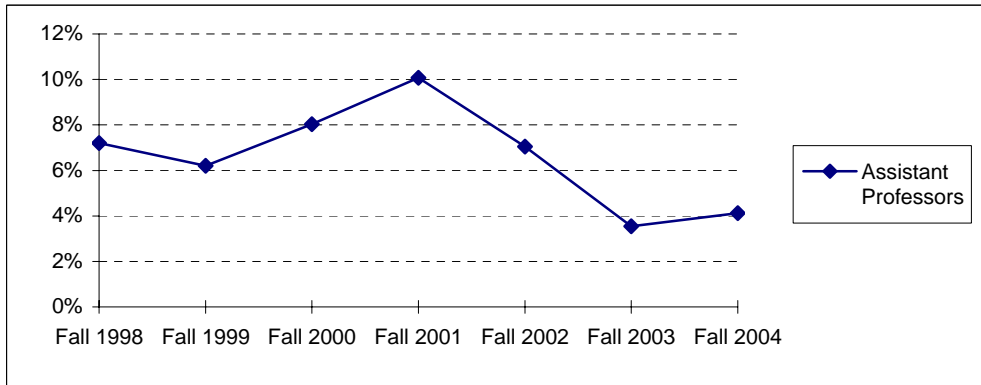
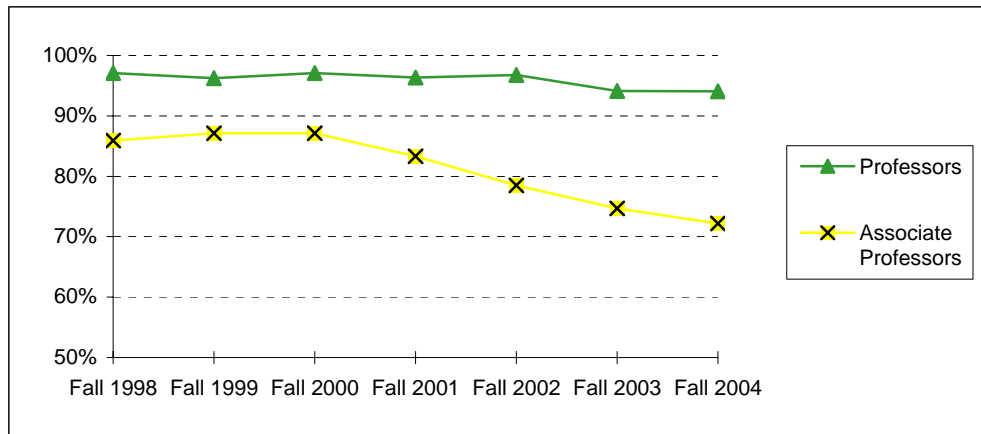
**Full-Time Faculty Positions (AAUP Definition)
Fall 1998 - Fall 2004**

Rank	Fall 1998		Fall 1999		Fall 2000		Fall 2001		Fall 2002		Fall 2003		Fall 2004	
	Male	Female	Male	Female	Male	Female	Male	Female	Male	Female	Male	Female	Male	Female
Professors:														
Number	205	35	203	35	203	39	211	34	213	33	210	29	205	32
Tenured	198	35	195	34	197	38	202	34	205	33	196	29	191	32
Associate Prof.:														
Number	89	46	91	49	86	46	89	49	96	48	105	49	108	43
Tenured	78	38	79	43	74	41	71	44	71	42	75	40	74	35
Assistant Prof:														
Number	73	52	77	52	84	53	85	54	93	63	99	70	102	68
Tenured	2	7	2	6	5	6	6	8	3	8	2	4	3	4
Instructors:														
Number	0	1	0	1	0	3	0	3	0	1	0	0	0	1
Tenured	0	1	0	1	0	1	0	1	0	0	0	0	0	1
Senior Lecturers:														
Number							26	38	22	39	22	38	21	37
Lecturers:														
Number	50	78	51	91	53	95	37	71	58	90	62	93	64	89
Total Number	417	212	422	228	426	236	448	249	482	274	498	279	500	270
Total Tenured	278	81	276	84	276	86	279	87	279	83	273	73	268	72

**Highest Degree Earned by Full-Time Faculty
Fall 1998 - Fall 2004**

	Fall 1998	Fall 1999	Fall 2000	Fall 2001	Fall 2002	Fall 2003	Fall 2004
Associate's	0	0	0	0	1	1	1
Bachelor's	1	0	0	1	1	2	2
Master's	145	150	159	165	199	222	213
Doctoral	463	478	480	507	550	569	572
Professional	20	22	23	24	26	26	26
Total	629	650	662	697	777	820	814

**Percentage of Full-Time Faculty with Tenure (AAUP Definition)
Fall 1998 - Fall 2004**



	Fall 1998	Fall 1999	Fall 2000	Fall 2001	Fall 2002	Fall 2003	Fall 2004
Professors	97.1%	96.2%	97.1%	96.3%	96.7%	94.1%	94.1%
Associate Professors	85.9%	87.1%	87.1%	83.3%	78.5%	74.7%	72.2%
Assistant Professors	7.2%	6.2%	8.0%	10.1%	7.1%	3.6%	4.1%
Instructors	100.0%	100.0%	33.3%	33.3%	0.0%	-	0.0%
All Faculty	57.1%	55.4%	54.7%	52.5%	47.9%	44.5%	44.2%

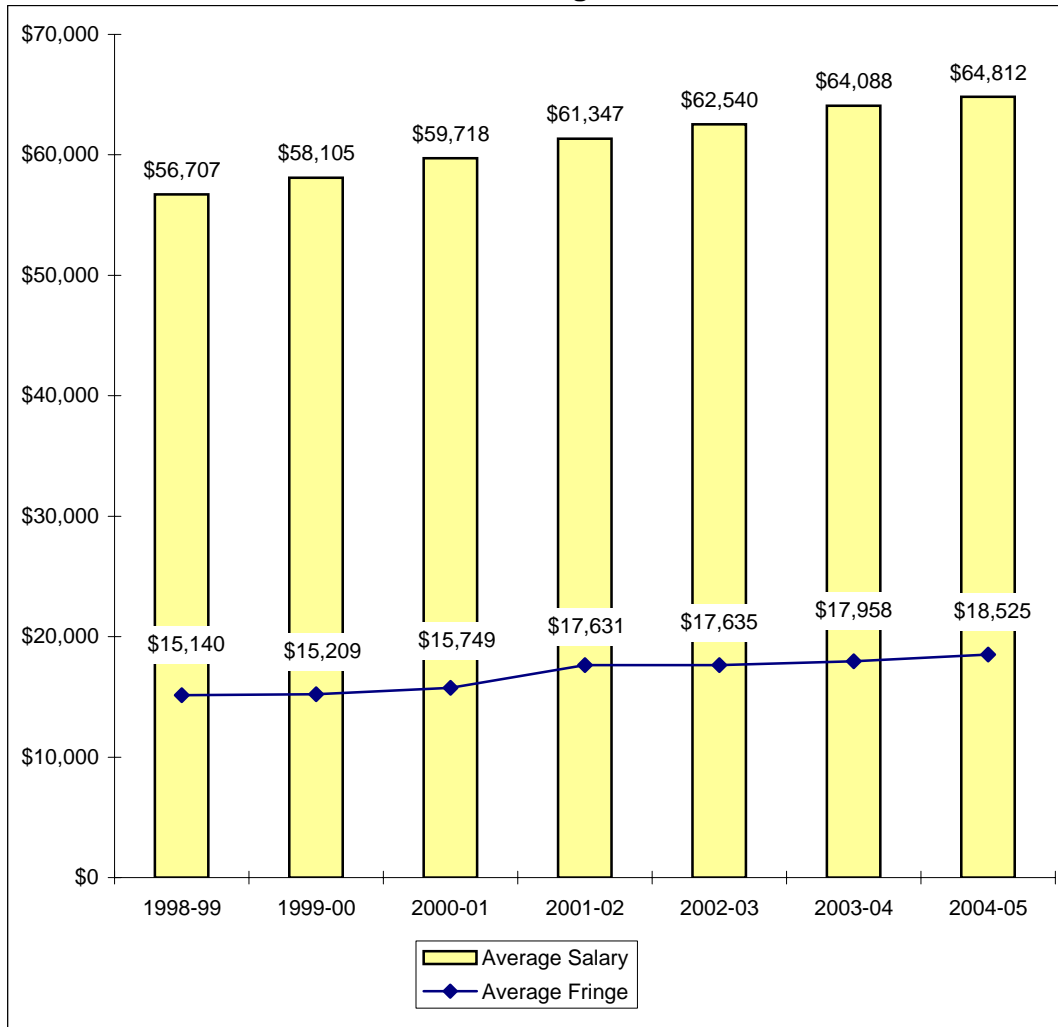
**Average Salaries of Full-Time Instructional Faculty
on Academic Year Contracts (AAUP Definition)
Fall 1998 - Fall 2004**

Rank	Fall 1998		Fall 1999		Fall 2000		Fall 2001	
	Number in Rank	Average Salary	Number in Rank	Average Salary	Number in Rank	Average Salary	Number in Rank	Average Salary
Professor	240	\$73,937	238	\$77,289	242	\$79,299	245	\$81,747
Associate Professor	135	\$56,977	140	\$58,365	132	\$60,511	138	\$62,697
Assistant Professor	125	\$44,193	129	\$45,423	137	\$47,530	139	\$50,046
Instructor	1	*	1	*	3	*	3	*
Senior Lecturer							64	\$45,227
Lecturer	128	\$36,420	142	\$37,309	148	\$38,525	108	\$37,884
All Ranks	629	\$56,707	650	\$58,105	662	\$59,718	697	\$61,347
Average Fringe		\$15,140		\$15,209		\$15,749		\$17,631
Fringe as a Percentage of Average Salary		26.7%		26.2%		26.4%		28.7%
Percentage Increase in Average Salary for Continuing Faculty		4.6%		4.3%		4.1%		5.0%

Rank	Fall 2002		Fall 2003		Fall 2004	
	Number in Rank	Average Salary	Number in Rank	Average Salary	Number in Rank	Average Salary
Professor	246	\$83,562	239	\$86,590	237	\$87,091
Associate Professor	144	\$65,136	154	\$67,706	151	\$67,501
Assistant Professor	156	\$55,208	169	\$57,177	170	\$58,675
Instructor	1	*	0		1	*
Senior Lecturer	61	\$46,482	60	\$47,826	58	\$47,719
Lecturer	148	\$39,478	155	\$39,627	153	\$41,055
All Ranks	756	\$62,540	777	\$64,088	770	\$64,812
Average Fringe		\$17,635		\$17,958		\$18,525
Fringe as a Percentage of Average Salary		28.2%		28.0%		28.6%
Percentage Increase in Average Salary for Continuing Faculty		4.9%		3.4%		0.2%

*Data not displayed for five or fewer faculty.

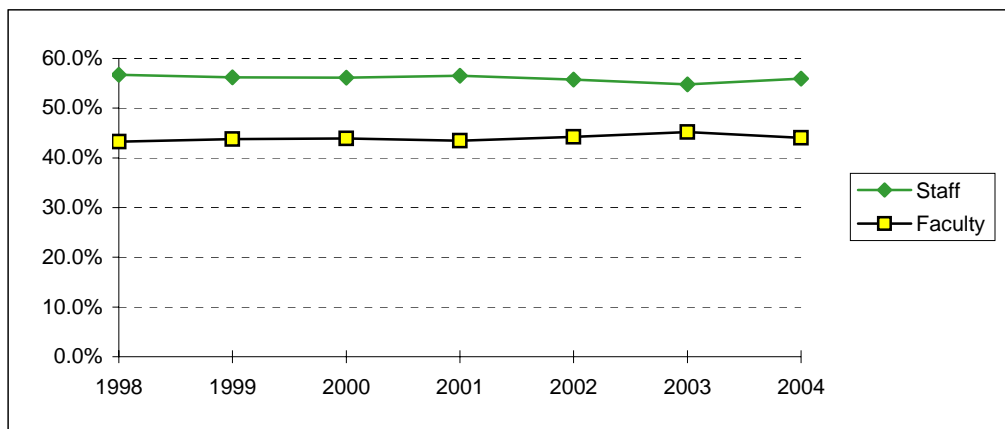
**Average Compensation of Full-Time Instructional Faculty
on Academic Year Contracts
1998-99 through 2004-05**



**Institutional Staff
Fall 1998 - Fall 2004**

Fall	1998	1999	2000	2001	2002	2003	2004
Faculty:							
Full-Time	655	676	689	725	806	851	834
Part-Time	86	114	133	116	110	144	113
Executive/Administrative:							
Full-Time	142	150	155	172	173	181	188
Part-Time	1	1	0	0	1	1	2
Other Professional:							
Full-Time	279	299	325	352	421	453	456
Part-Time	15	17	13	14	14	11	18
Technical/Paraprofessional:							
Full-Time	38	44	46	44	33	40	40
Part-Time	2	2	4	3	4	2	3
Clerical/Secretarial:							
Full-Time	351	361	372	392	399	408	396
Part-Time	61	64	58	44	39	42	39
Skilled Crafts:							
Full-Time	5	6	6	4	7	6	6
Part-Time	1	2	2	1	0	0	0
Service/Maintenance:							
Full-Time	62	60	63	61	57	58	49
Part-Time	15	9	7	6	7	5	7
Total:							
Full-Time	1532	1596	1656	1750	1896	1997	1969
Part-Time	181	209	217	184	175	205	182
Grand Total	1713	1805	1873	1934	2071	2202	2151

**Percentage of Institutional Staff
Fall 1998 - Fall 2004**



Fall	1998	1999	2000	2001	2002	2003	2004
Staff	56.7%	56.2%	56.1%	56.5%	55.8%	54.8%	56.0%
Faculty	43.3%	43.8%	43.9%	43.5%	44.2%	45.2%	44.0%

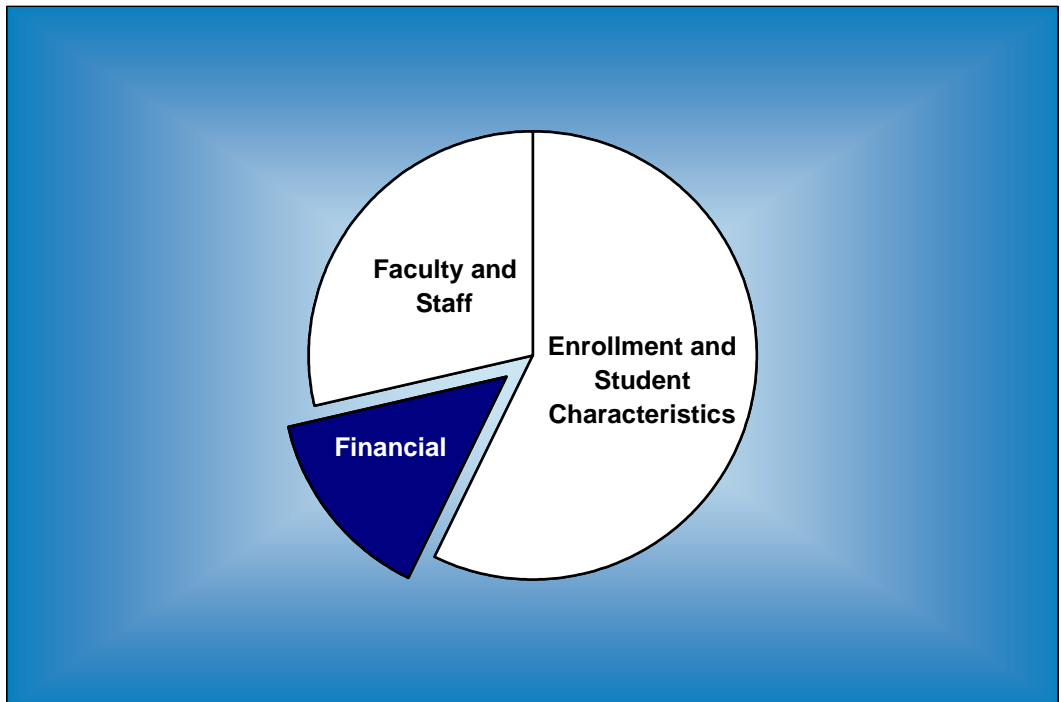
**Full-Time Faculty by Religious Affiliation
Fall 1998 - Fall 2004**

Fall	1998	1999	2000	2001	2002	2003	2004
Assembly of God	1	1	1	1	1	1	1
Baptist	307	315	315	331	381	401	390
Catholic	51	45	51	48	61	73	78
Church of Christ	16	15	16	16	21	20	20
Disciples of Christ	16	13	11	13	14	15	14
Episcopalian	47	49	45	47	51	53	52
Lutheran	35	38	38	40	41	46	46
Methodist	73	70	71	78	81	80	79
Non-/Inter-Denominational	11	11	16	16	17	17	21
Presbyterian	39	36	41	46	49	50	51
Other / Unspecified	33	57	57	61	60	64	62
Total	629	650	662	697	777	820	814

**Full-Time Staff by Religious Affiliation
Fall 1998 - Fall 2004**

Fall	1998	1999	2000	2001	2002	2003	2004
Assembly of God	5	4	6	7	7	11	10
Baptist	493	484	507	569	594	614	592
Catholic	76	84	86	100	110	112	117
Church of Christ	26	30	32	35	37	34	33
Disciples of Christ	17	20	17	18	20	21	19
Episcopalian	17	17	15	17	26	26	30
Lutheran	27	33	37	40	36	35	35
Methodist	90	96	99	109	110	115	109
Non/Inter-Denominational	13	20	24	20	42	58	64
Presbyterian	17	17	21	25	28	25	22
Other / Unspecified	96	115	123	85	80	100	95
Total	877	920	967	1025	1090	1151	1126

Financial



**Undergraduate Tuition and Other Semester Charges
1998-99 through 2004-05**

	1998-99	1999-00	2000-01	2001-02	2002-03	2003-04	2004-05
UG Grandfathered Tuition per Hour (8)	\$308.00	\$329.00	\$355.00	\$379.00	\$405.00	\$432.00	\$461.00
Increase from Prior Year	6.9%	6.8%	7.9%	6.8%	6.9%	6.7%	6.7%
UG Tuition per Semester Hour (9)					\$654.00	\$698.00	\$746.00
Increase from Prior Year						6.7%	6.9%
UG Flat Tuition Rate (7)					\$15,700	\$16,750	\$17,900
Increase from Prior Year						6.7%	6.9%
Application Fee	35.00	35.00	35.00	35.00	35.00	35.00	35.00
Applied Music Fee(1)	96.00	105.00	110.00	117.00	125.00	133.00	142.00
Change-of-Course Fee	20.00	20.00	20.00	20.00	20.00	20.00	20.00
Chapel-Forum Fee	15.00	15.00	25.00	25.00	25.00	30.00	50.00
Credit by Baylor Exam Fee	154.00	164.50	177.50	189.50	203.00	216.00	230.00
General Student Fee	427.00	490.00	524.00	590.00	625.00	690.00	745.00
Enrollment Deposit (2)	100.00	100.00	100.00	100.00	100.00	100.00	100.00
Lab/Course Fees (3)	25.00	25.00	25.00	25.00	25.00	35.00	50.00
Late Registration Fee (4)	20.00	20.00	20.00	20.00	20.00	20.00	30.00
Student Life Fee	1.00	1.00	1.00	1.00	0.00	0.00	0.00
Technology Fee	85.00	90.00	95.00	101.00	107.00	150.00	195.00
Vehicle Registration Fee (5)	120.00	145.00	170.00	175.00	175.00	175.00	175.00
Room (Freshmen in Penland/Collins)	979.00	1,050.00	1,124.00	1,295.00	1,364.00	1,464.00	1,560.00
Increase from Prior Year	3.1%	7.3%	7.0%	15.2%	5.3%	7.3%	6.6%
Board (6)	1,304.41	1,342.30	1,383.44	1,460.29	1,493.18	1,476.53	1,524.16
Increase from Prior Year	3.0%	2.9%	3.1%	5.6%	2.3%	-1.1%	3.2%

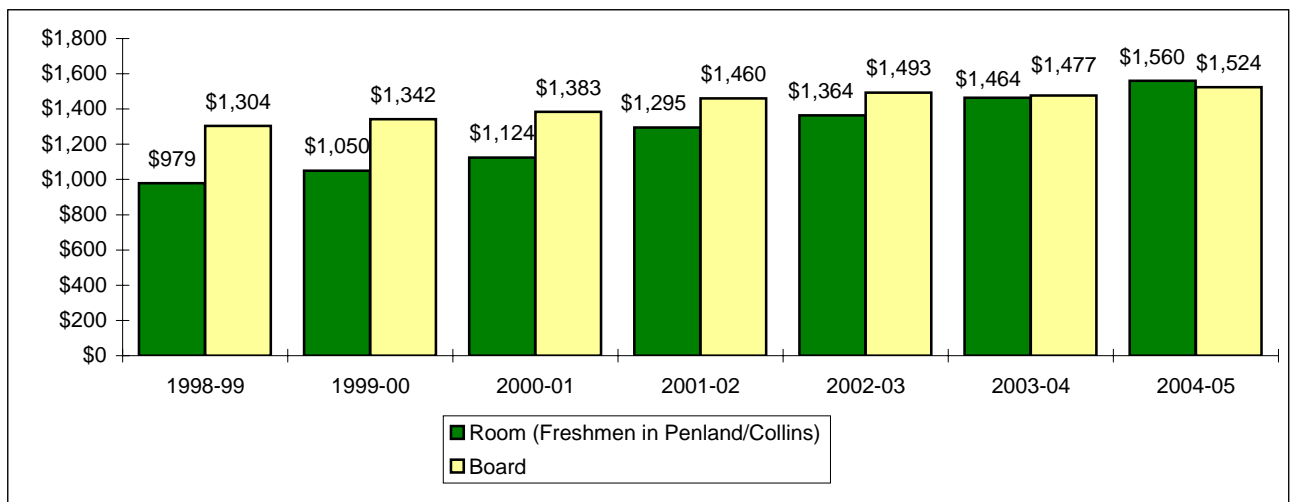
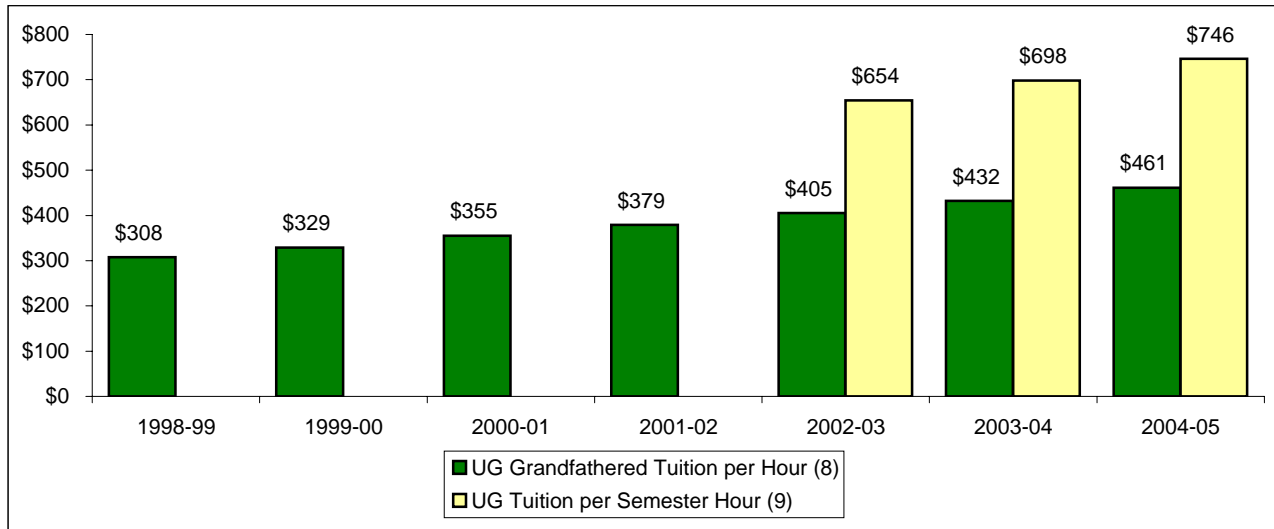
Increase in Semester Charges from 1998-99 to 2004-05:

Tuition, per semester hour	49.7%
Room	59.3%
Board	16.8%

Notes:

- (1) Supplemental charge per semester for one 30-minute lesson per week.
- (2) In 1998, the General University Deposit became an Enrollment Deposit. The Enrollment Deposit is paid to assure enrollment place and is applied on the student's first semester bill.
- (3) Minimum lab fee is noted; some courses may be higher.
- (4) Minimum charges are noted; charges vary.
- (5) Annual automobile fee (September - August).
- (6) For 1997-98 through 2000-2001, Board rate reflects the 20-meal plan, per semester, including tax. For 2001-02 through 2003-04, Board rate reflects the "Classic - 16 Plus Meal Plan," per semester, including tax. The 2003-04 and 2004-05 Board rate reflects the "Classic -16 Meal Plan" but meal plan does not include BearBucks.
- (7) Beginning in 2002-03, a flat tuition rate was instituted for new undergraduate students taking 12 or more hours per semester (Fall and Spring).
- (8) Beginning in 2002-03, the tuition per semester hour rate is applicable for students who were enrolled at Baylor prior to June 1, 2002 (grandfathered rate).
- (9) Tuition per semester hour for new students taking less than 12 hours.

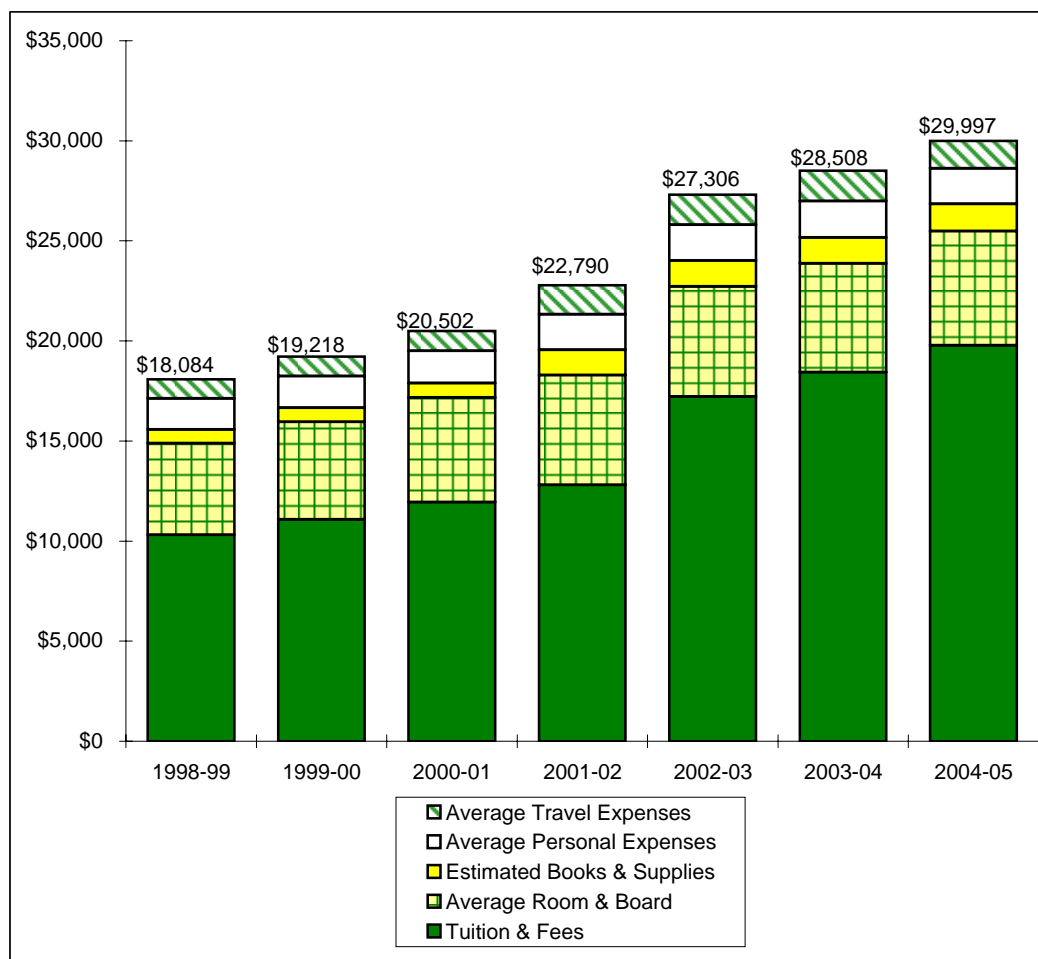
Tuition, Room and Board Charges 1998-99 through 2004-05



See notes on page 28.

Annual Undergraduate Student Cost Profile 1998-99 through 2004-05

	1998-99	1999-00	2000-01	2001-02	2002-03	2003-04	2004-05
Tuition & Fees	\$10,316	\$11,082	\$11,940	\$12,804	\$17,214	\$18,430	\$19,780
Average Room & Board	4,566	4,874	5,238	5,494	5,514	5,434	5,713
Estimated Books & Supplies	690	702	716	1,256	1,280	1,298	1,356
Average Personal Expenses	1,556	1,586	1,616	1,772	1,806	1,832	1,778
Average Travel Expenses	956	974	992	1,464	1,492	1,514	1,370
Average Total Cost	\$18,084	\$19,218	\$20,502	\$22,790	\$27,306	\$28,508	\$29,997
Increase from Prior Year	6.2%	6.3%	6.7%	11.2%	19.8%	4.4%	5.2%



Note: In 2002-03 a flat tuition rate was instituted for new students taking 12 or more hours per semester (Fall and Spring).

**Operating Funds
1997-98 through 2003-04**

Sources of Revenues

	1997-98	1998-99	1999-00	2000-01	2001-02	2002-03	2003-04
Tuition & Fees	\$111,333,824	\$131,549,785	\$145,105,566	\$161,790,383	\$180,194,091	\$205,208,253	\$228,672,157
Gifts/Private Grants	6,248,707	8,244,782	6,926,099	10,081,101	6,107,120	4,915,658	3,957,986
BGCT Appropriation	4,039,046	3,994,879	4,078,147	4,022,186	3,822,637	3,846,290	3,832,014
Endowment Income	12,098,349	12,111,256	12,678,477	15,075,011	13,698,822	17,771,203	21,035,555
Investment Income	2,212,007	2,364,681	2,826,020	3,772,096	1,635,000	919,715	635,674
Other Sources	10,292,257	9,599,477	13,710,214	11,459,110	12,921,478	12,434,554	13,900,817
Auxiliary Enterprises	32,582,644	35,561,127	36,679,685	39,285,440	40,185,133	39,019,089	37,156,315
Total Revenues	\$178,806,834	\$203,425,987	\$222,004,208	\$245,485,327	\$258,564,281	\$284,114,762	\$309,190,518

Sources of Revenues as a Percentage of Total Revenues

	1997-98	1998-99	1999-00	2000-01	2001-02	2002-03	2003-04
Tuition & Fees	62.3%	64.7%	65.4%	65.8%	69.6%	72.3%	74.1%
Gifts/Private Grants	3.5%	4.1%	3.1%	4.1%	2.4%	1.7%	1.3%
BGCT Appropriation	2.3%	2.0%	1.8%	1.6%	1.5%	1.4%	1.2%
Endowment Income	6.9%	6.1%	5.7%	6.1%	5.3%	6.3%	6.8%
Investment Income	1.2%	1.2%	1.3%	1.5%	0.6%	0.3%	0.2%
Other Sources	5.8%	4.7%	6.2%	4.7%	5.0%	4.4%	4.5%
Auxiliary Enterprises	18.2%	17.5%	16.5%	16.0%	15.4%	13.6%	12.0%
Total Revenues	100.0%	100.0%	100.0%	100.0%	100.0%	100.0%	100.0%

**Operating Funds (Continued)
1997-98 through 2003-04**

Expenditures by Function

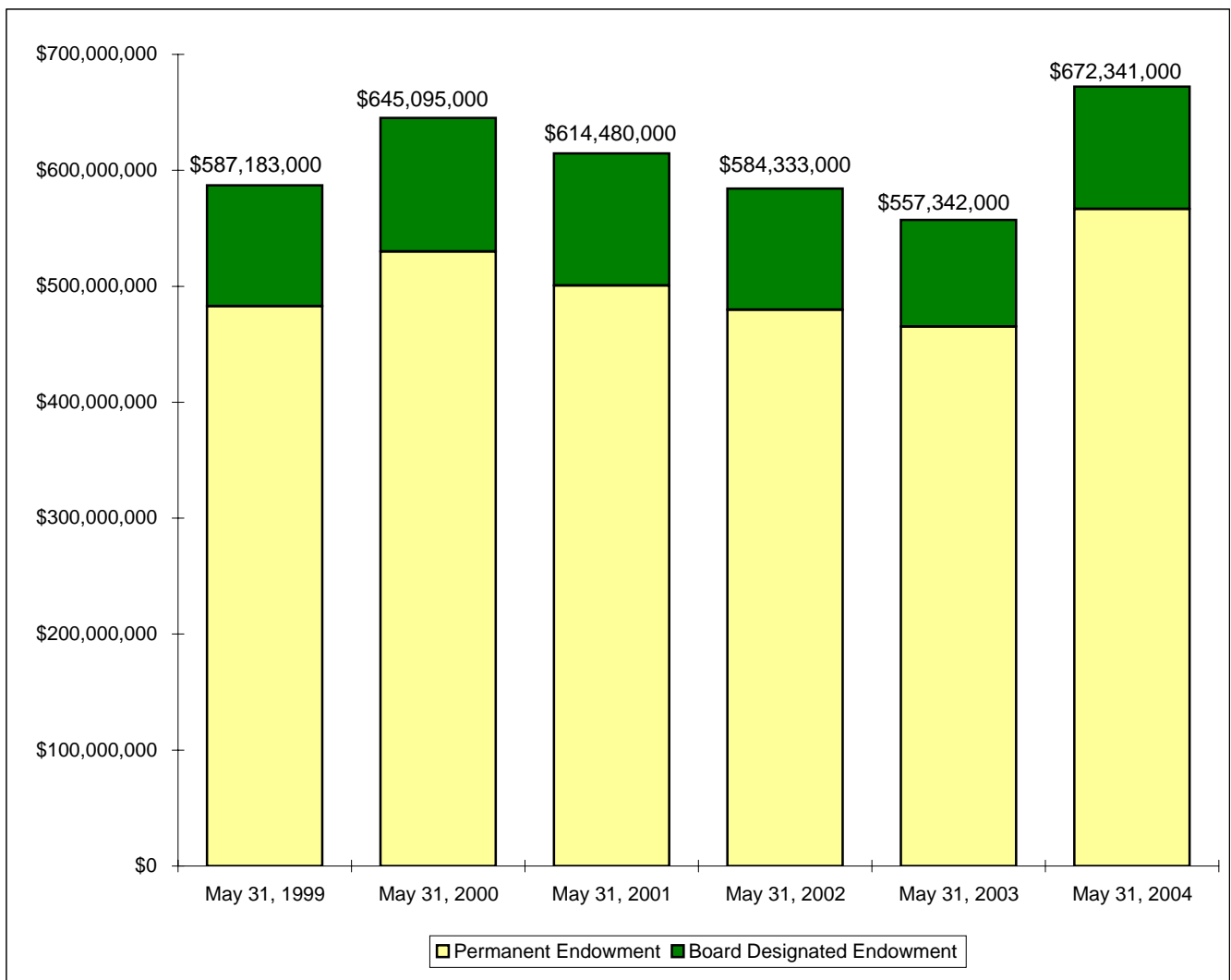
	1997-98	1998-99	1999-00	2000-01	2001-02	2002-03	2003-04
Instruction	\$69,394,793	\$73,484,863	\$78,132,224	\$82,621,971	\$92,355,519	\$102,617,463	\$109,586,442
Gifts/Private Grants	13,945,393	16,847,590	18,662,339	20,363,667	23,117,511	24,666,809	24,957,815
Student Services	9,473,902	9,152,085	11,165,359	11,798,452	12,849,698	14,779,593	15,177,946
Plant Operations/Maintenance	10,429,262	11,889,750	14,220,616	16,020,525	19,608,685	22,537,742	33,373,695
Institutional Support	18,169,021	23,709,606	26,511,017	28,859,740	35,095,190	37,986,315	37,244,481
Scholarships & Fellowships	12,954,165	15,630,383	18,955,785	21,932,892	27,598,589	37,529,834	47,065,860
Auxiliary Enterprises	30,842,634	35,375,307	37,884,043	42,264,498	45,428,872	46,541,207	43,784,647
Discretionary Transfers	13,572,228	17,318,040	16,453,711	21,600,154	2,497,935	(2,560,253)	(2,018,647)
Total Expenditures	178,781,398	203,407,624	221,985,094	245,461,899	258,551,999	284,098,710	309,172,239
Excess Revenues	\$25,436	\$18,363	\$19,114	\$23,428	\$12,282	\$16,052	\$18,279

**Gifts/Private Grants
Percentage of Total Expenditures**

	1997-98	1998-99	1999-00	2000-01	2001-02	2002-03	2003-04
Instruction	38.8%	36.1%	35.2%	33.7%	35.7%	36.1%	35.4%
Acad Support, Res. & Pub. Srv.	7.8%	8.3%	8.4%	8.3%	8.9%	8.7%	8.1%
Student Services	5.3%	4.5%	5.0%	4.8%	5.0%	5.2%	4.9%
Plant Operations/Maintenance	5.8%	5.8%	6.4%	6.5%	7.6%	7.9%	10.8%
Institutional Support	10.2%	11.7%	11.9%	11.8%	13.6%	13.4%	12.0%
Scholarships & Fellowships	7.2%	7.7%	8.5%	8.9%	10.7%	13.2%	15.2%
Auxiliary Enterprises	17.3%	17.4%	17.1%	17.2%	17.6%	16.4%	14.2%
Discretionary Transfers	7.6%	8.5%	7.4%	8.8%	1.0%	-0.9%	-0.7%
Total Expenditures	100.0%	100.0%	100.0%	100.0%	100.0%	100.0%	100.0%

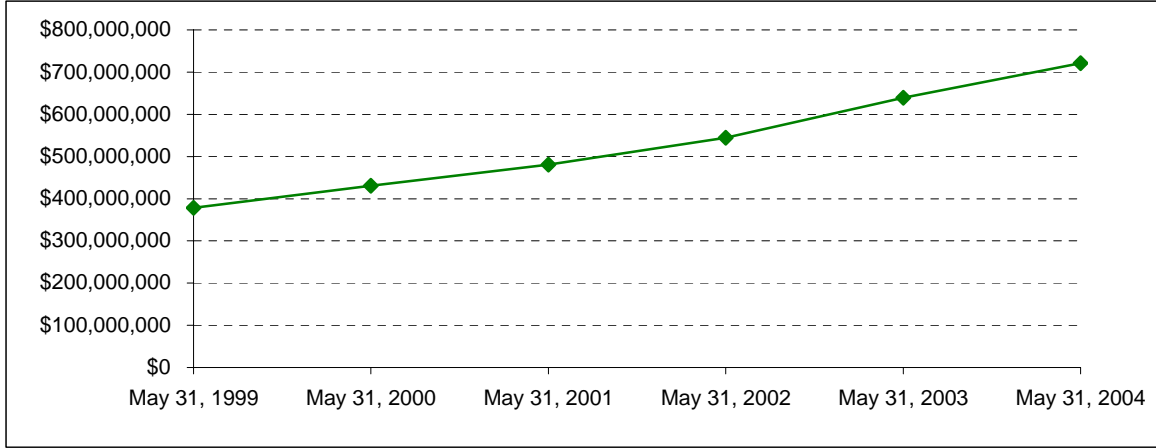
**Endowment Fund Balance - Market Value
May 31, 1999 through May 31, 2004**

	May 31, 1999	May 31, 2000	May 31, 2001	May 31, 2002	May 31, 2003	May 31, 2004
Permanent Endowment	\$482,807,000	\$529,979,000	\$500,739,000	\$479,728,000	\$465,189,000	\$566,655,000
Board Designated Endowment	104,376,000	115,116,000	113,741,000	104,605,000	92,153,000	105,686,000
Total Endowment	\$587,183,000	\$645,095,000	\$614,480,000	\$584,333,000	\$557,342,000	\$672,341,000
Permanent Endowment	82.2%	82.2%	81.5%	82.1%	83.5%	84.3%
Board Designated Endowment	17.8%	17.8%	18.5%	17.9%	16.5%	15.7%
Total Endowment	100.0%	100.0%	100.0%	100.0%	100.0%	100.0%



**Property, Plant and Equipment*
May 31, 1999 through May 31, 2004**

Property, Plant & Equipment	May 31, 1999	May 31, 2000	May 31, 2001	May 31, 2002	May 31, 2003	May 31, 2004
	\$378,059,000	\$430,619,000	\$480,878,000	\$544,541,000	\$638,914,000	\$720,816,000



*Does not reflect the impact of accumulated depreciation.

	May 31, 1999	May 31, 2000	May 31, 2001	May 31, 2002	May 31, 2003	May 31, 2004
Net Assets	\$855,595,000	\$941,304,000	\$945,490,000	\$899,185,000	\$850,735,000	\$989,916,000
Total Assets	\$951,390,000	\$1,043,535,000	\$1,056,374,000	\$1,238,399,000	\$1,230,551,000	\$1,363,089,000

