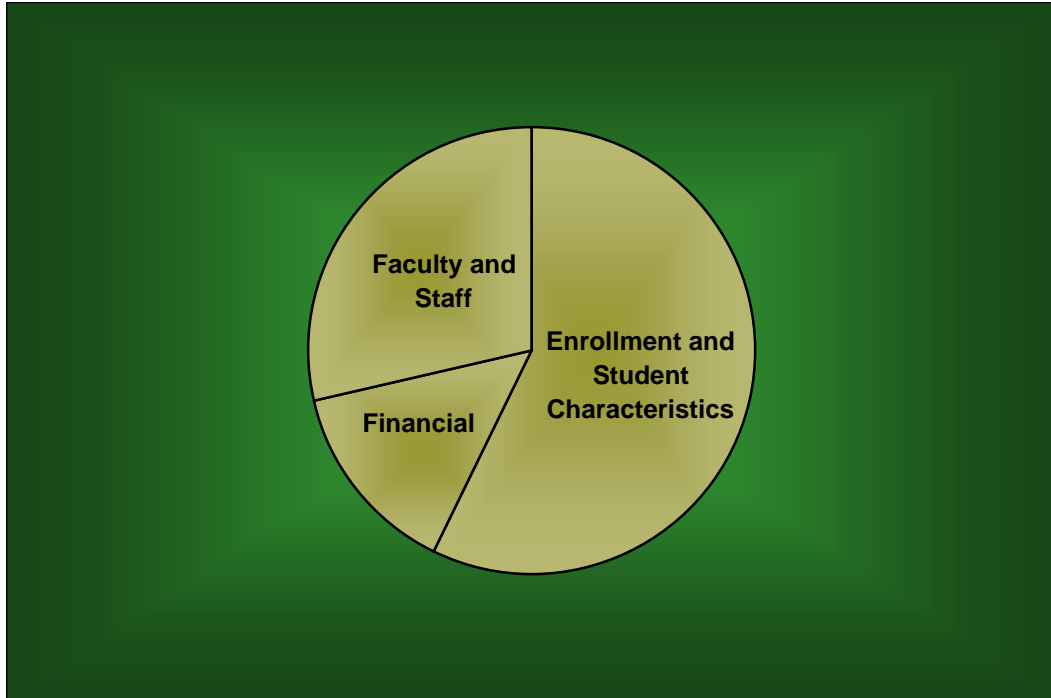


BAYLOR TRENDS



Fall 2002 - Fall 2008

Volume XX

Prepared by the Office of Institutional Research and Testing, Fall 2008

<http://www.baylor.edu/irt/>

Table of Contents

	Page
ENROLLMENT AND STUDENT CHARACTERISTICS	
<i>New Freshman Applications and Enrollment</i>	1
<i>Transfer Applications and Enrollment</i>	1
<i>New Freshman Applications and Enrollment by Gender</i>	2
<i>New Freshman and Transfer Student Enrollment</i>	3
<i>Enrollment by Classification</i>	4
<i>Enrollment</i>	5
<i>Enrollment by Gender, Waco Campus</i>	6
<i>Enrollment by Religious Affiliation, Waco Campus</i>	7
<i>Baptist Percentage, Waco Campus</i>	7
<i>Enrollment by Racial/Ethnic Group</i>	8
<i>Racial/Ethnic Minority Percentage</i>	8
<i>Leading Texas Counties of Origin</i>	9
<i>Leading States of Origin</i>	9
<i>Percentage from Top Four Texas Counties</i>	10
<i>Students from Texas by Three-Digit Zip Code Area</i>	10
<i>Texas Enrollment by County</i>	11
<i>Enrollment by State</i>	12
<i>Countries Represented by Nonresident Aliens</i>	13
<i>Enrollment by Unit</i>	14
<i>Enrollment Percentage by Unit</i>	15
<i>Student Credit Hours by Unit, Waco Campus</i>	16
<i>Retention of First-Time Freshman Classes</i>	17
<i>Distribution of Degrees</i>	18
<i>Summary of Degrees Awarded</i>	19
<i>Degree Programs</i>	20
 FACULTY AND STAFF	
<i>Full-Time Faculty Positions</i>	22
<i>Highest Degree Earned by Full-Time Faculty</i>	22
<i>Percentage of Full-Time Faculty with Tenure</i>	23
<i>Average Salaries of Full-Time Instructional Faculty on Academic Year Contracts</i>	24
<i>Average Compensation of Full-Time Instructional Faculty on Academic Year Contracts</i>	25
<i>Institutional Staff</i>	26
<i>Percentage of Institutional Staff</i>	26
<i>Full-Time Faculty by Religious Affiliation</i>	27
<i>Full-Time Staff by Religious Affiliation</i>	27

FINANCIAL

Undergraduate Tuition and Other Semester Charges 28

Undergraduate Tuition, Room and Board Charges..... 29

Annual Undergraduate Student Cost Profile..... 30

Operating Funds:

Sources of Revenues..... 31

Sources of Revenue as a Percentage of Total Revenues..... 31

Expenditures by Functions..... 32

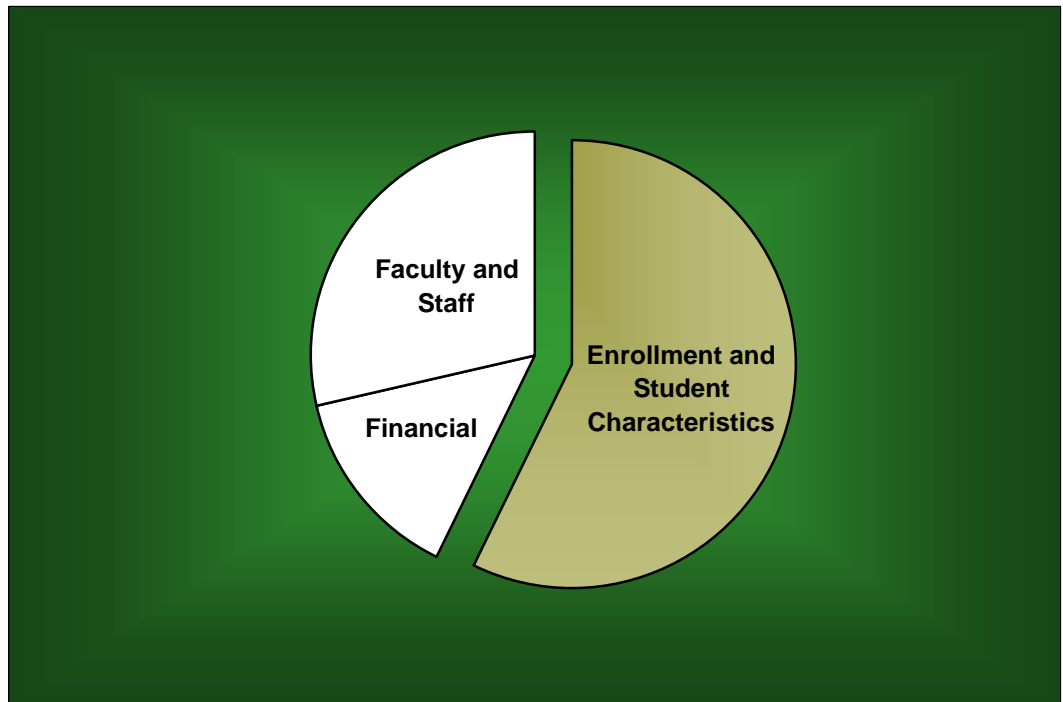
Expenditures by Functions as a Percentage of Total Expenditures 32

Endowment Fund Balance - Market Value..... 33

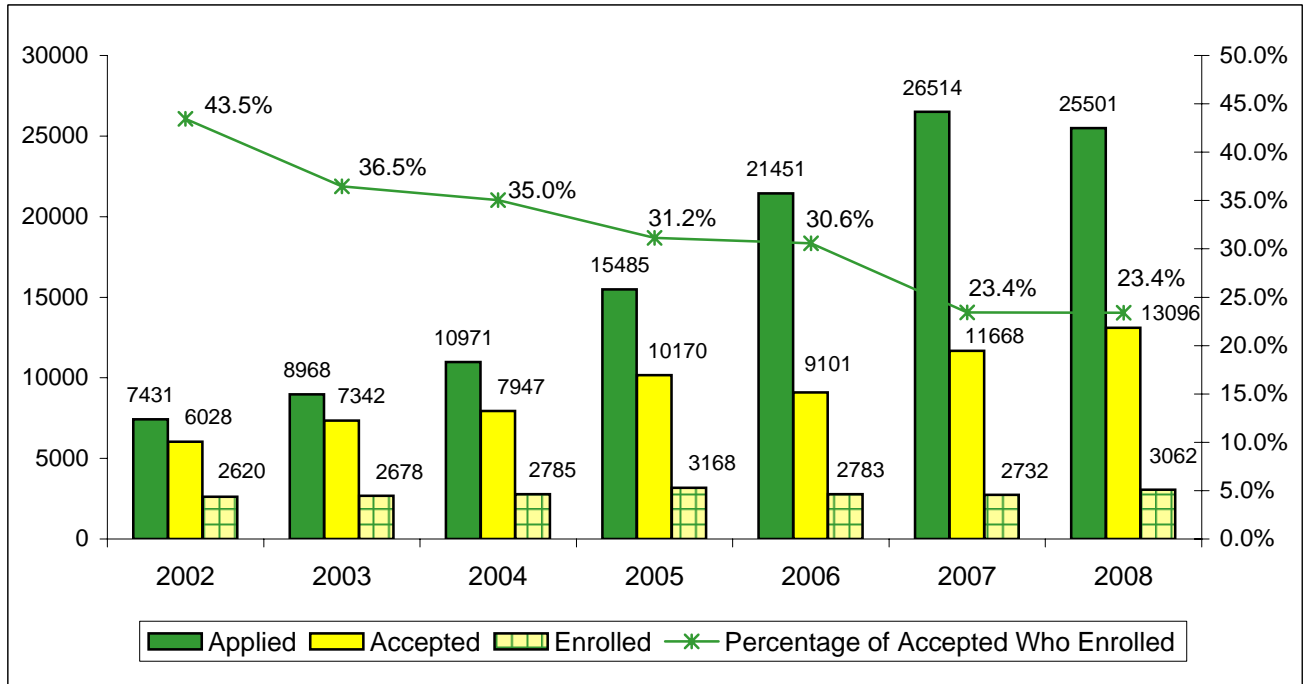
Property, Plant and Equipment 34

Assets 34

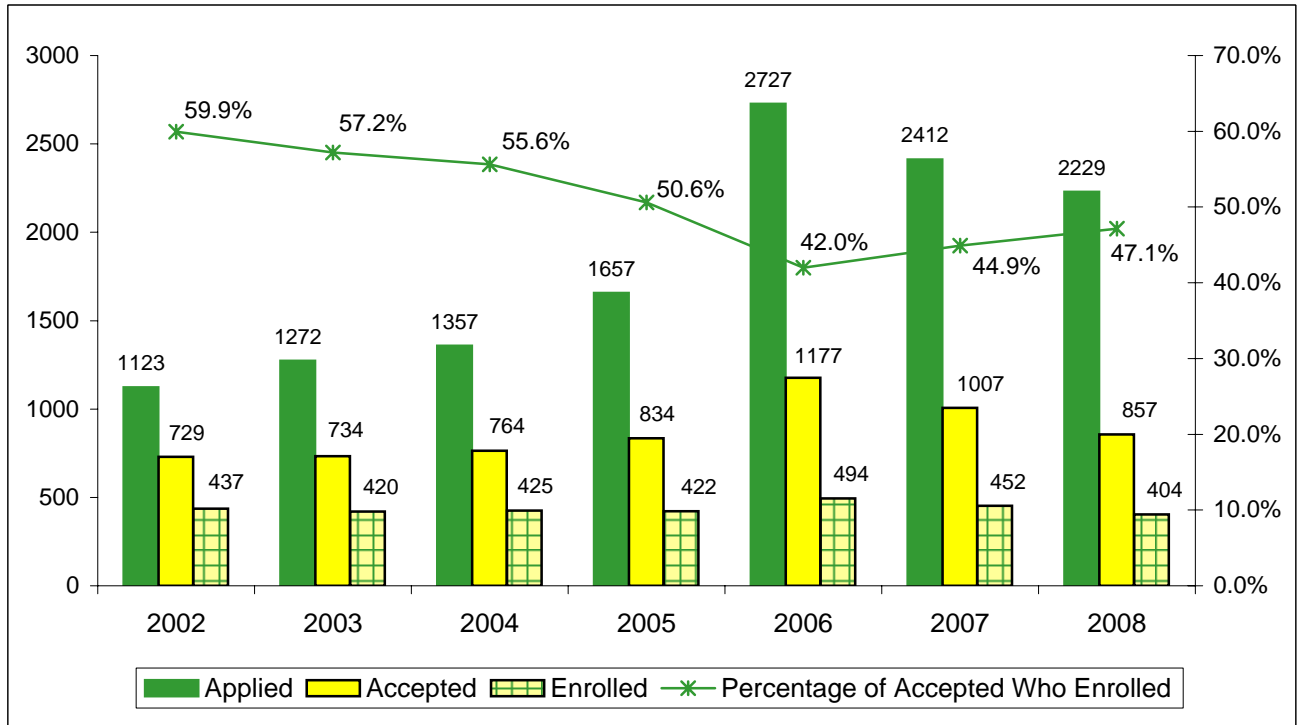
Enrollment and Student Characteristics



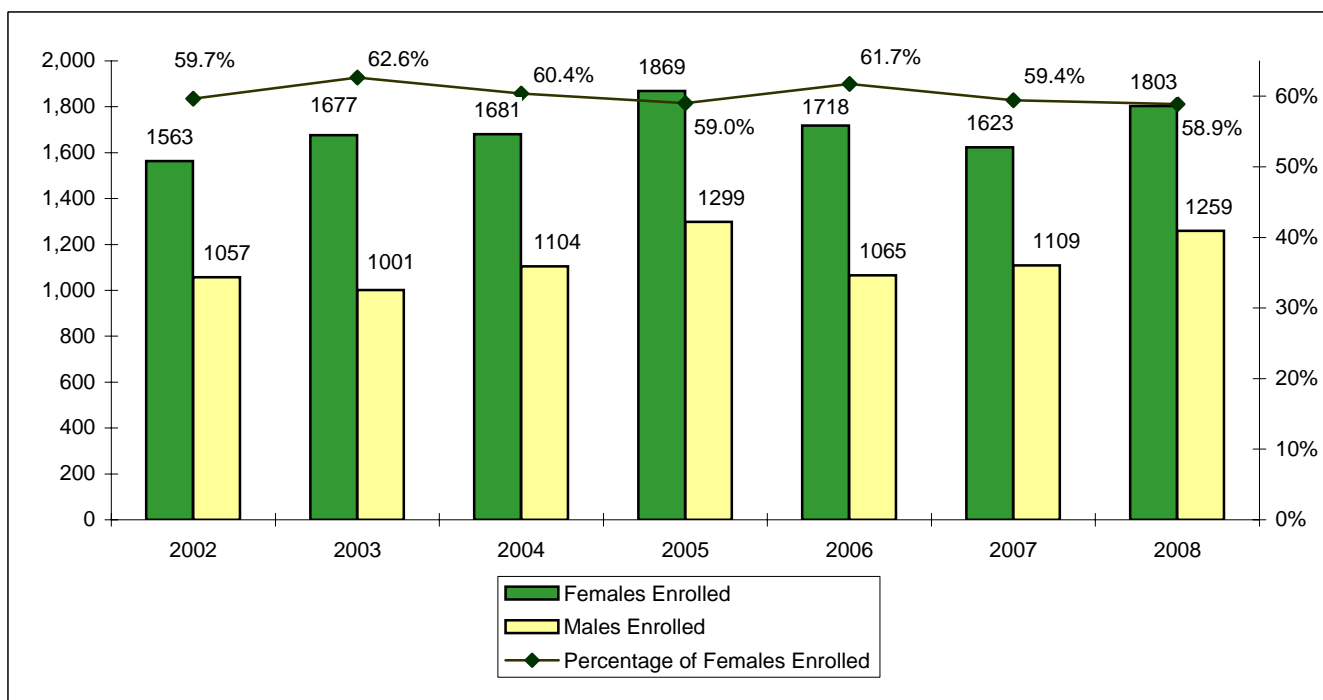
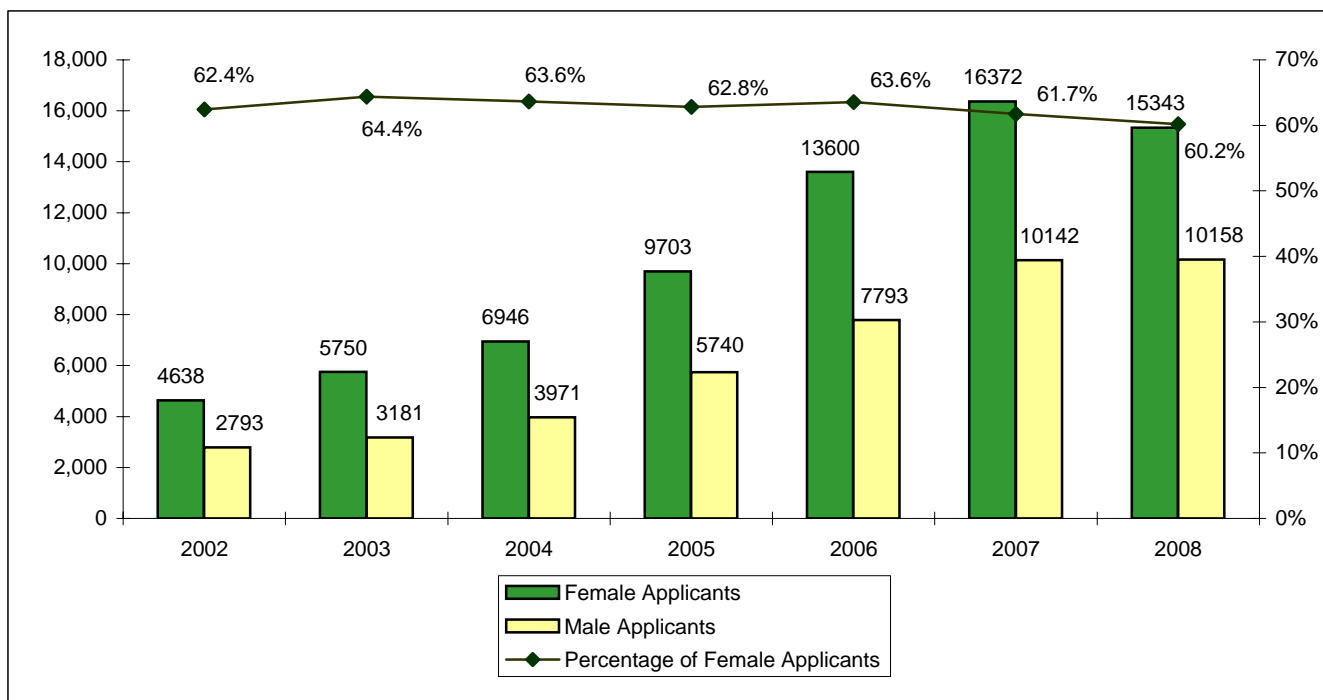
**New Freshman Applications, Acceptances and Enrollment
Fall 2002 - Fall 2008**



**Transfer Applications, Acceptances and Enrollment
Fall 2002 - Fall 2008**

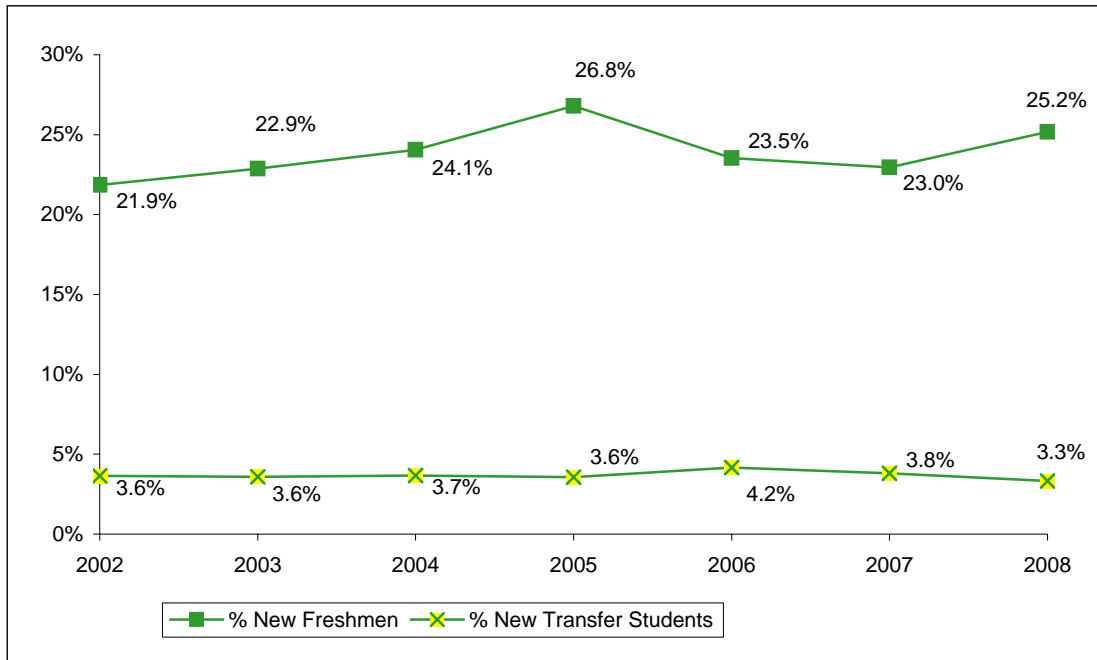


New Freshman Applications and Enrollment by Gender*
Fall 2002 - Fall 2008



*Totals of male and female applicants may not equal the total applicants displayed on the previous page, because

**New Freshman and Transfer Student Enrollment
Fall 2002 - Fall 2008**



	Fall	2002	2003	2004	2005	2006	2007	2008
New Freshmen		2,620	2,678	2,785	3,168	2,783	2,732	3,062
New Transfer Students		437	420	425	422	494	452	404
Undergraduate Enrollment		11,987	11,712	11,580	11,825	11,831	11,902	12,162
% New Freshmen		21.9%	22.9%	24.1%	26.8%	23.5%	23.0%	25.2%
% New Transfer Students		3.6%	3.6%	3.7%	3.6%	4.2%	3.8%	3.3%

Notes:

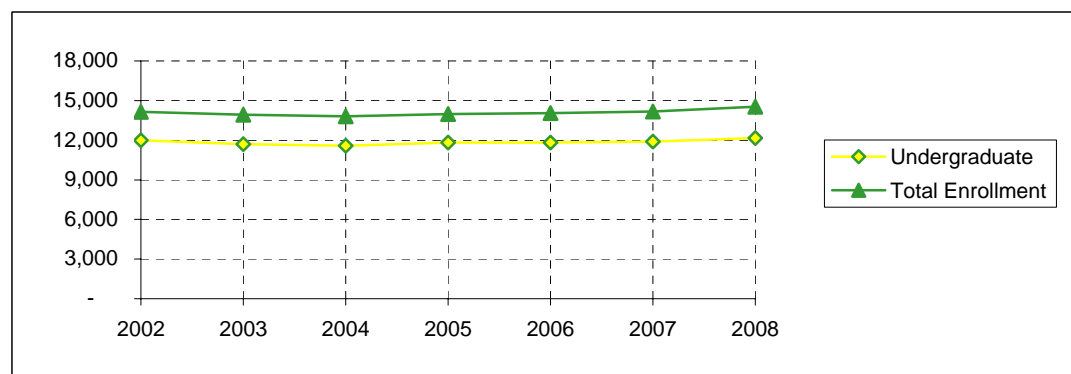
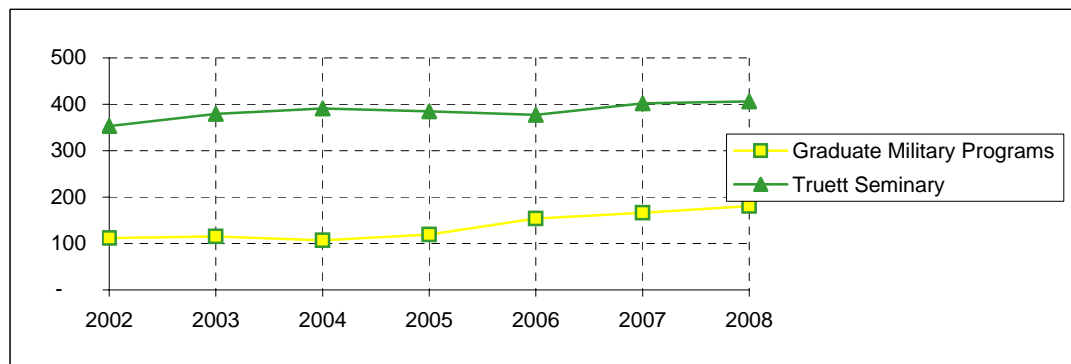
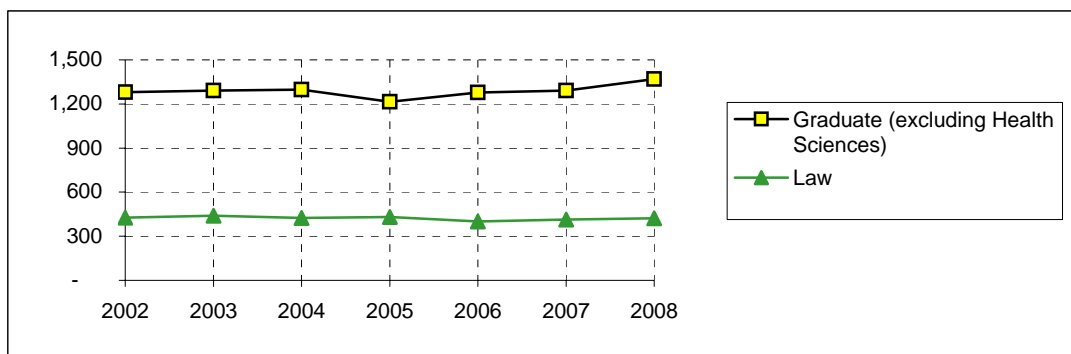
1. Freshmen who enter the University in the fall or preceding summer term are counted as "new freshmen." Similarly, transfer students entering in the fall or preceding summer term are counted as "transfer students" for the fall semester.

2. "Transfer students" refers to the entering summer/fall group of transfer students. For example, in Fall 2003 the 420 entering transfer students comprised 3.6% of the 11,712 undergraduates. However, for Fall 2003 the total number of enrolled undergraduates who had transferred into the University consisted of (a) transfers who entered in Fall 2003 and (b) students who transferred into the University in previous academic years. Generally, the total enrollment of students who had entered as transfer students is approximately 15% of the undergraduate student body.

**Enrollment by Classification
Fall 2002 - Fall 2008**

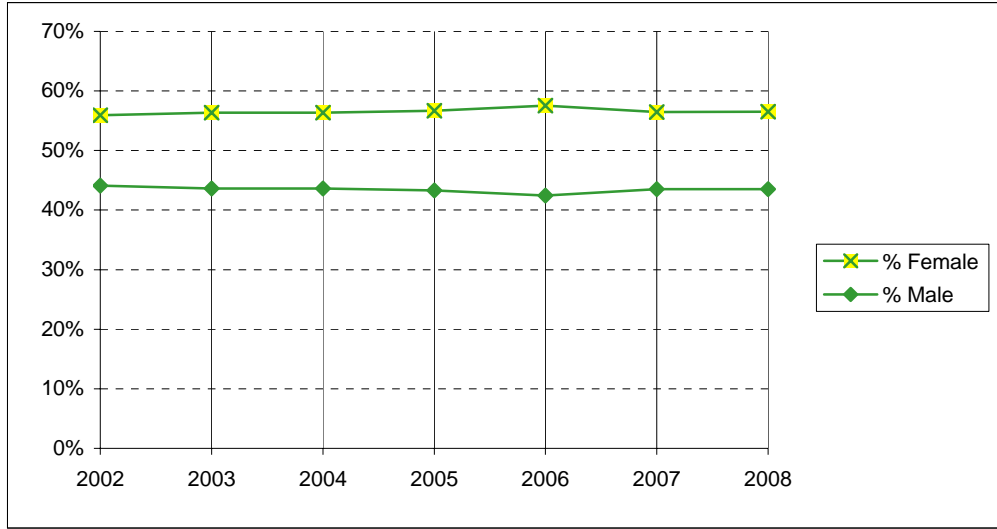
	Fall	2002	2003	2004	2005	2006	2007	2008
Freshman		3,309	3,382	3,430	3,791	3,524	3,315	3,522
Sophomore		2,679	2,506	2,391	2,529	2,833	2,683	2,557
Junior		2,595	2,462	2,425	2,295	2,481	2,652	2,604
Senior		3,297	3,262	3,223	3,080	2,896	3,159	3,383
Special		22	-	-	-	-	-	-
Postbaccalaureate		85	43	79	84	69	61	68
Nondegree		-	57	32	46	28	32	28
TOTAL UNDERGRADUATE		11,987	11,712	11,580	11,825	11,831	11,902	12,162
Master's		843	845	834	720	778	783	833
Doctoral		416	427	445	473	473	483	502
Graduate Transient/Nondegree		10	10	7	10	9	9	13
Graduate Professional		12	9	11	11	18	16	21
TOTAL "WACO" GRADUATE		1,281	1,291	1,297	1,214	1,278	1,291	1,369
Seminary Master's		318	337	345	344	334	365	367
Seminary Doctoral		35	41	43	39	42	36	38
Nondegree		-	1	3	2	1	1	1
		353	379	391	385	377	402	406
School of Law		426	440	424	432	400	413	423
Graduate Military Programs		112	115	107	119	154	166	181
TOTAL ENROLLMENT		14,159	13,937	13,799	13,975	14,040	14,174	14,541

**Enrollment
Fall 2002 - Fall 2008**



Fall	2002	2003	2004	2005	2006	2007	2008
Undergraduate	11,987	11,712	11,580	11,825	11,831	11,902	12,162
Graduate (excluding Health Sciences)	1,281	1,291	1,297	1,214	1,278	1,291	1,369
Law	426	440	424	432	400	413	423
Truett Seminary	353	379	391	385	377	402	406
SUBTOTAL	14,047	13,822	13,692	13,856	13,886	14,008	14,360
Graduate Military Programs	112	115	107	119	154	166	181
TOTAL ENROLLMENT	14,159	13,937	13,799	13,975	14,040	14,174	14,541

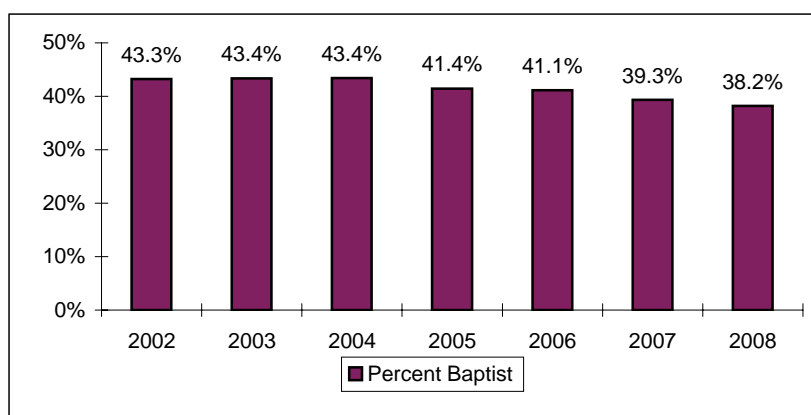
**Enrollment by Gender
(Excluding Health Sciences)
Fall 2002 - Fall 2008**



	Fall	2002	2003	2004	2005	2006	2007	2008
Female		7,854	7,790	7,717	7,854	7,990	7,912	8,113
Male		6,193	6,032	5,975	6,002	5,896	6,096	6,247
Total (excluding Health Sciences)		14,047	13,822	13,692	13,856	13,886	14,008	14,360
% Female		55.9%	56.4%	56.4%	56.7%	57.5%	56.5%	56.5%
% Male		44.1%	43.6%	43.6%	43.3%	42.5%	43.5%	43.5%

**Enrollment by Religious Affiliation (Excluding Health Sciences)
Fall 2002 - Fall 2008**

Fall	2002	2003	2004	2005	2006	2007	2008
African Methodist Episcopal	-	1	4	7	5	5	7
Anglican - Church of England	-	-	7	11	9	7	14
Assembly of God	124	125	136	130	129	131	129
Atheist	-	-	14	16	22	20	33
Baptist	6076	5994	5941	5738	5710	5511	5482
Buddhist	71	60	77	76	79	76	80
Catholic	1659	1591	1765	1833	1788	1805	1923
Christian Church	-	16	59	84	86	123	149
Christian Scientist	13	12	16	15	15	9	8
Church of Christ	283	253	269	257	259	253	241
Church of God	21	29	29	27	29	31	28
Church of the Nazarene	25	33	37	28	34	35	38
Congregational Church	23	21	19	17	14	10	6
Disciples of Christ (Christian)	70	76	80	86	91	101	107
Dutch Reformed	-	-	-	2	4	4	5
Eastern Orthodox	32	35	32	35	37	43	50
Episcopalian	294	249	251	256	262	253	279
Evangelical Free Church	-	3	12	25	36	43	51
Four Square Gospel	10	11	11	12	10	15	11
Full Gospel	-	-	2	4	3	3	2
Greek Orthodox	-	4	6	7	5	6	4
Hindu	85	89	105	115	103	101	113
Independent Bible Church	-	1	12	19	21	24	28
Interdenominational	477	380	266	167	98	79	83
Jehovah's Witness	10	12	10	11	8	9	12
Jewish	-	-	9	11	11	10	26
Judaism	14	22	23	21	14	15	-
Latter Day Saints (Mormon)	23	23	36	48	39	26	31
Lutheran	388	354	343	364	371	368	399
Mennonite	6	7	10	10	5	7	6
Methodist	1280	1219	1133	1099	1074	1095	1168
Missionary Alliance	-	1	2	2	5	7	8
Moslem (Islam, Muslim)	109	109	119	117	133	124	131
Non-Denominational	270	567	1054	1444	1703	1911	2080
Pentecostal	115	107	100	112	99	110	124
Presbyterian	534	536	549	549	569	571	601
Protestant	-	3	27	54	53	68	81
Seventh Day Adventist	-	2	11	12	11	13	10
Society of Friends (Quakers)	3	1	2	3	2	2	4
Unitarian	6	7	6	4	3	6	10
United Brethren	4	3	-	2	2	1	1
United Church of Christ	-	-	2	6	5	3	4
Other/Not Specified	2022	1866	1106	1020	930	974	793
TOTAL RELIGION	14047	13822	13692	13856	13886	14008	14360



**Enrollment by Racial / Ethnic Group*
Fall 2002 - Fall 2008**

A.

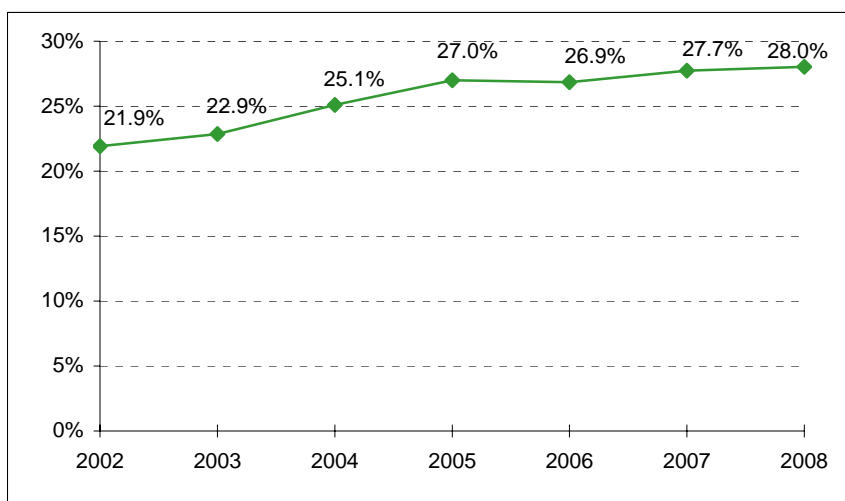
	Fall	2002	2003	2004	2005	2006	2007	2008
African American/Black		771	862	944	1,048	1,036	1,046	1,077
American Indian/Alaskan Native		75	83	80	93	88	90	110
Asian/Pacific Islander		883	865	977	1,044	1,050	1,127	1,132
Hispanic		1,078	1,077	1,133	1,284	1,301	1,375	1,464
White		10,919	10,541	10,318	10,183	10,249	10,221	10,448
Other		296	300	330	304	295	293	294
Not Specified		137	209	17	19	21	22	16
Total		14,159	13,937	13,799	13,975	14,040	14,174	14,541

B.

	Fall	2002	2003	2004	2005	2006	2007	2008
African American/Black		744	835	908	1,001	990	995	1,020
American Indian/Alaskan Native		75	82	79	92	88	90	110
Asian/Pacific Islander		660	666	770	846	857	907	920
Hispanic		1,045	1,040	1,094	1,237	1,256	1,330	1,420
White		10,854	10,476	10,248	10,128	10,183	10,151	10,383
Other		250	256	286	264	257	245	255
Not Specified		125	184	17	19	20	22	16
NONRESIDENT ALIEN		406	398	397	388	389	434	417
Total		14,159	13,937	13,799	13,975	14,040	14,174	14,541

*In Table B, nonresident aliens are partitioned as a group.

**Racial / Ethnic Minority Percentage
Fall 2002 - Fall 2008
(From Table A)**



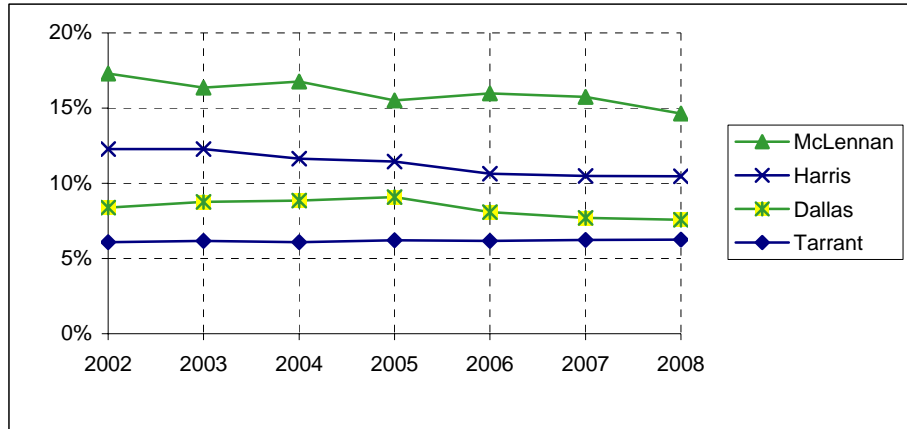
**Leading Texas Counties of Origin
Fall 2002 - Fall 2008**

Fall	2002	2003	2004	2005	2006	2007	2008
McLennan	2,448	2,279	2,315	2,169	2,242	2,232	2,128
Harris	1,738	1,711	1,605	1,599	1,494	1,486	1,521
Dallas	1,188	1,221	1,222	1,271	1,134	1,093	1,100
Tarrant	863	860	840	868	867	884	910
Collin	490	459	457	481	582	601	631
Bexar	475	438	464	486	507	507	521
Travis	331	372	385	405	410	404	420
Fort Bend	332	315	318	332	358	379	416
Denton	160	171	180	196	270	298	340
Montgomery	266	269	263	298	283	290	324
Williamson	154	171	197	201	220	221	268
Bell	204	204	199	215	210	194	200
El Paso	93	85	95	100	109	120	116
Galveston	119	102	109	108	109	105	114
Smith	147	138	146	151	150	122	109
Ellis	75	57	61	68	69	90	109
Gregg	135	145	111	106	97	94	108
Brazoria	115	115	99	97	100	105	101
Hidalgo	85	83	90	96	88	99	96
Nueces	88	83	71	89	71	74	92
Rockwall	41	72	74	84	69	76	79
Johnson	75	74	65	68	64	69	70
Jefferson	78	71	87	88	81	70	69

**Leading States of Origin
Fall 2002 - Fall 2008**

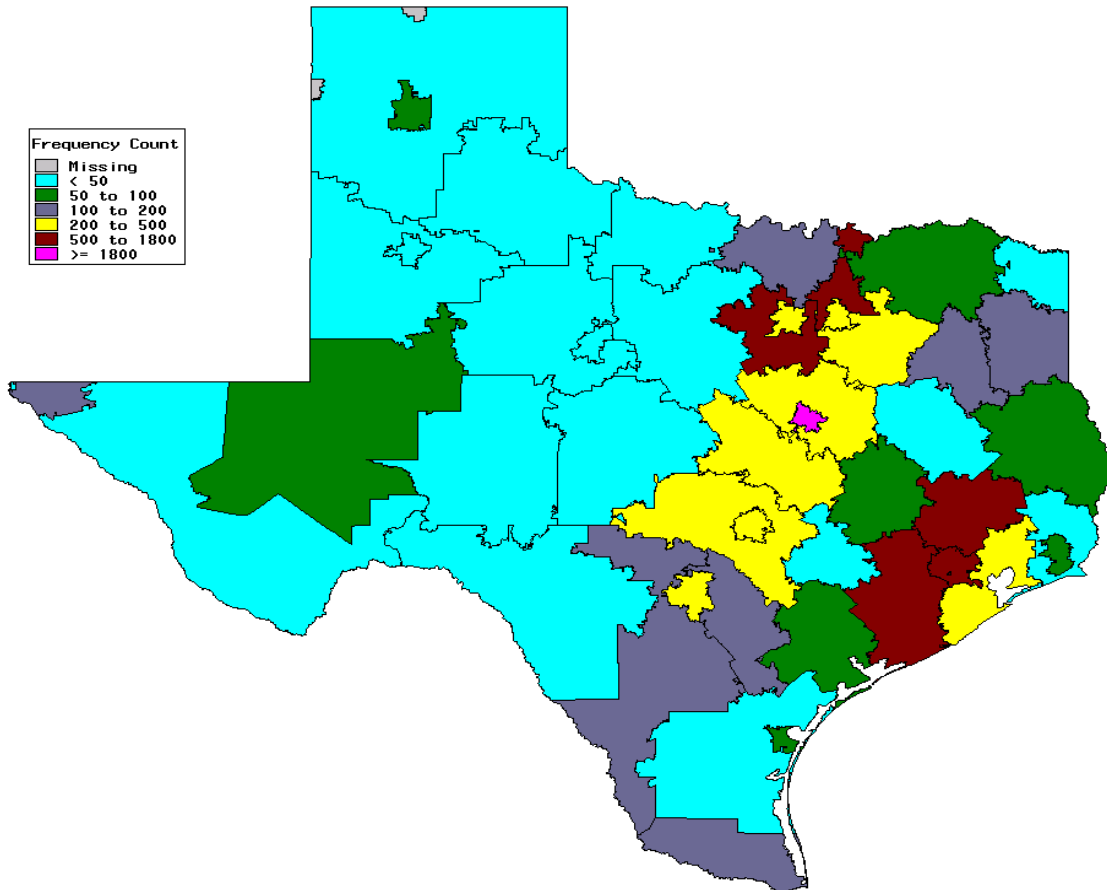
Fall	2002	2003	2004	2005	2006	2007	2008
Texas	11,613	11,316	11,233	11,349	11,316	11,355	11,616
California	227	238	255	252	269	268	278
Colorado	137	129	132	145	143	179	199
Oklahoma	204	186	184	177	170	175	195
Louisiana	156	145	136	145	152	176	169
Illinois	87	103	97	105	117	125	167
Missouri	110	121	101	100	97	105	119
Arkansas	129	133	122	105	99	104	110
Kansas	96	84	84	91	93	99	100
Tennessee	72	67	65	66	80	88	89
Florida	53	60	80	88	97	86	86
Arizona	57	56	62	81	79	78	75
Virginia	51	38	37	44	55	63	59

Percentage From Top Four Texas Counties
Fall 2002 - Fall 2008



Fall	2002	2003	2004	2005	2006	2007	2008
McLennan	17.3%	16.4%	16.8%	15.5%	16.0%	15.7%	14.6%
Harris	12.3%	12.3%	11.6%	11.4%	10.6%	10.5%	10.5%
Dallas	8.4%	8.8%	8.9%	9.1%	8.1%	7.7%	7.6%
Tarrant	6.1%	6.2%	6.1%	6.2%	6.2%	6.2%	6.3%

Students From Texas by Three-Digit Zip Code Area
Fall 2002 - Fall 2008



**Texas Enrollment by County
Fall 2008**

	n		n		n		n		n
Anderson	16	Crane	2	Hartley	1	Madison	7	San Patricio	10
Andrews	0	Crockett	1	Haskell	2	Marion	4	San Saba	0
Angelina	24	Crosby	0	Hays	38	Martin	0	Schleicher	0
Aransas	5	Culberson	3	Hemphill	0	Mason	0	Scurry	2
Archer	2	Dallam	0	Henderson	18	Matagorda	17	Shackelford	0
Armstrong	0	Dallas	1,100	Hidalgo	96	Maverick	14	Shelby	2
Atascosa	4	Dawson	1	Hill	26	Mc Culloch	1	Sherman	1
Austin	13	De Witt	6	Hockley	1	Mc Lennan	2,128	Smith	109
Bailey	0	Deaf Smith	2	Hood	17	Mc Mullen	0	Somervell	4
Bandera	9	Delta	1	Hopkins	15	Medina	14	Starr	5
Bastrop	11	Denton	340	Houston	7	Menard	1	Stephens	2
Baylor	1	Dickens	0	Howard	4	Midland	36	Sterling	0
Bee	3	Dimmit	0	Hudspeth	0	Milam	10	Stonewall	0
Bell	200	Donley	0	Hunt	23	Mills	2	Sutton	0
Bexar	521	Duval	0	Hutchinson	5	Mitchell	1	Swisher	4
Blanco	4	Eastland	2	Irion	0	Montague	4	Tarrant	910
Borden	0	Ector	16	Jack	2	Montgomery	324	Taylor	46
Bosque	18	Edwards	0	Jackson	2	Moore	2	Terrell	0
Bowie	23	El Paso	116	Jasper	5	Morris	5	Terry	1
Brazoria	101	Ellis	109	Jeff Davis	0	Motley	0	Throckmorton	0
Brazos	57	Erath	12	Jefferson	69	Nacogdoches	26	Titus	13
Brewster	1	Falls	16	Jim Hogg	0	Navarro	27	Tom Green	21
Briscoe	1	Fannin	3	Jim Wells	5	Newton	0	Travis	420
Brooks	0	Fayette	10	Johnson	70	Nolan	5	Trinity	1
Brown	16	Fisher	1	Jones	2	Nueces	92	Tyler	2
Burleson	4	Floyd	0	Karnes	3	Ochiltree	3	Upshur	9
Burnet	12	Foard	0	Kaufman	34	Oldham	0	Upton	0
Caldwell	4	Fort Bend	416	Kendall	47	Orange	11	Uvalde	4
Calhoun	2	Franklin	6	Kenedy	0	Palo Pinto	3	Val Verde	5
Callahan	1	Freestone	16	Kent	0	Panola	6	Van Zandt	11
Cameron	56	Frio	1	Kerr	20	Parker	48	Victoria	32
Camp	3	Gaines	0	Kimble	2	Parmer	4	Walker	11
Carson	1	Galveston	114	King	0	Pecos	2	Waller	8
Cass	8	Garza	1	Kinney	0	Polk	7	Ward	0
Castro	1	Gillespie	22	Kleberg	4	Potter	18	Washington	11
Chambers	8	Glasscock	0	Knox	2	Presidio	0	Webb	24
Cherokee	10	Goliad	1	La Salle	0	Rains	2	Wharton	7
Childress	2	Gonzales	2	Lamar	19	Randall	44	Wheeler	0
Clay	0	Gray	1	Lamb	0	Reagan	0	Wichita	21
Cochran	0	Grayson	39	Lampasas	3	Real	0	Wilbarger	6
Coke	1	Gregg	108	Lavaca	8	Red River	1	Willacy	0
Coleman	1	Grimes	8	Lee	3	Reeves	0	Williamson	268
Collin	631	Guadalupe	39	Leon	8	Refugio	0	Wilson	6
Collingsworth	1	Hale	6	Liberty	13	Roberts	0	Winkler	0
Colorado	8	Hall	1	Limestone	11	Robertson	3	Wise	28
Comal	54	Hamilton	3	Lipscomb	0	Rockwall	79	Wood	11
Comanche	2	Hansford	0	Live Oak	0	Runnels	2	Yoakum	1
Concho	3	Hardeman	1	Llano	5	Rusk	18	Young	10
Cooke	8	Hardin	14	Loving	0	Sabine	2	Zapata	1
Coryell	37	Harris	1,521	Lubbock	43	San Augustine	1	Zavala	2
Cottle	0	Harrison	27	Lynn	1	San Jacinto	3	Total	11,616

Source: ICUT.

Enrollment by State
Fall 2002 - Fall 2008

Fall	2002	2003	2004	2005	2006	2007	2008
Alabama	30	34	33	33	32	29	33
Alaska	14	14	18	20	15	13	9
Arizona	57	56	62	81	79	78	75
Arkansas	129	133	122	105	99	104	110
California	227	238	255	252	269	268	278
Colorado	137	129	132	145	143	179	199
Connecticut	7	8	6	7	8	9	10
Delaware	3	1	0	1	1	3	4
District of Columbia	0	2	2	2	2	1	1
Florida	53	60	80	88	97	86	86
Georgia	41	46	58	63	73	61	73
Hawaii	9	8	15	13	10	14	12
Idaho	4	5	5	9	5	13	10
Illinois	87	103	97	105	117	125	167
Indiana	31	28	28	28	29	28	26
Iowa	19	24	21	19	20	16	20
Kansas	96	84	84	91	33	99	100
Kentucky	25	18	18	13	13	7	13
Louisiana	156	145	136	145	152	176	169
Maine	4	4	6	6	2	3	3
Maryland	22	22	18	28	32	29	19
Massachusetts	13	12	18	19	22	19	25
Michigan	14	16	16	22	31	25	40
Minnesota	34	43	35	35	37	36	49
Mississippi	39	34	37	38	34	28	27
Missouri	110	121	101	100	97	105	119
Montana	3	2	6	1	3	8	6
Nebraska	41	41	34	29	28	31	29
Nevada	3	2	1	12	19	13	13
New Hampshire	8	8	8	5	7	9	12
New Jersey	26	22	24	21	19	23	21
New Mexico	69	68	70	66	69	65	53
New York	25	18	27	24	25	26	26
North Carolina	32	43	37	40	41	57	42
North Dakota	3	1	0	1	1	1	2
Ohio	30	28	27	29	39	45	49
Oklahoma	204	186	184	177	170	175	195
Oregon	14	21	21	21	20	20	25
Pennsylvania	22	29	27	26	32	31	30
Rhode Island	3	1	5	2	4	3	2
South Carolina	16	18	20	16	19	14	16
South Dakota	12	9	12	8	8	11	5
Tennessee	72	67	65	66	80	88	89
Texas	11613	11316	11233	11349	11316	11355	11616
Utah	11	8	6	5	9	10	7
Vermont	2	1	0	2	3	3	2
Virginia	51	38	37	44	55	63	59
Washington	37	41	31	36	31	35	49
West Virginia	2	5	2	1	0	3	3
Wisconsin	21	17	23	17	19	13	18
Wyoming	4	6	4	6	10	12	11
Total	13685	13384	13307	13472	13479	13668	14057

Source: IRT.

Countries Represented by Nonresident Aliens, Fall 2002 to Fall 2008

	Fall	2002	2003	2004	2005	2006	2007	2008		Fall	2002	2003	2004	2005	2006	2007	2008
Albania		0	1	1	0	0	0	0	Kosovo		0	0	1	0	0	0	0
Angola		1	1	2	2	2	1	0	Kuwait		1	1	0	0	0	0	0
Argentina		6	5	4	2	1	0	1	Latvia		1	2	2	1	1	0	0
Armenia		0	0	1	1	1	1	1	Lebanon		1	2	1	1	0	1	1
Australia		4	3	4	1	4	5	1	Liberia		0	0	0	0	0	2	1
Austria		1	1	0	0	0	0	0	Malaysia		1	0	1	1	3	3	3
Azerbaijan		0	0	0	1	0	0	0	Mali		0	0	0	1	1	0	0
Bahamas		2	2	1	3	3	2	2	Mexico		6	6	8	7	8	10	15
Bangladesh		3	2	2	1	2	1	0	Moldova		0	1	1	1	0	1	0
Barbados		0	0	0	0	0	1	1	Mongolia		0	1	1	1	1	0	0
Belarus		0	1	1	0	0	0	0	Montserrat		0	0	1	1	1	1	1
Belgium		1	0	0	0	0	0	2	Namibia		0	0	0	0	0	0	1
Belize		0	1	1	1	0	0	0	Nepal		2	2	5	7	5	5	5
Bolivia		1	1	3	3	1	1	1	Netherlands		1	0	0	0	0	0	1
Brazil		6	6	3	2	5	7	6	New Zealand		0	0	0	3	2	2	0
Bulgaria		4	4	6	2	3	2	1	Nicaragua		1	1	2	2	0	0	0
Cambodia		1	0	0	0	0	0	0	Nigeria		15	19	22	30	29	34	34
Cameroon		1	3	1	2	2	4	3	Norway		2	0	1	0	0	1	2
Canada		18	18	15	13	18	21	21	Pakistan		10	3	2	3	5	5	1
Cayman Islands		2	2	2	0	0	0	0	Panama		2	2	0	1	1	0	0
Chile		0	0	0	0	0	0	1	Peru		1	1	2	2	1	0	1
China*		69	72	70	67	68	90	99	Philippines		0	1	0	1	0	0	1
Colombia		1	2	2	7	9	9	7	Poland		1	2	2	2	1	2	2
Congo		0	0	1	1	1	0	0	Portugal		0	0	0	1	0	0	0
Costa Rica		7	8	8	7	1	0	0	Romania		4	6	6	2	3	3	1
Cote D'Ivoire		0	0	0	0	1	2	2	Russia		4	2	6	5	4	6	5
Croatia		2	2	1	0	0	0	1	Rwanda		2	1	1	1	0	0	0
Czech Republic		0	1	3	4	5	6	5	Saudi Arabia		1	0	0	0	0	0	0
Denmark		0	0	0	0	0	1	0	Senegal		0	0	0	1	2	2	1
Dominica		1	1	0	0	0	0	0	Serbia & Montenegro		1	0	0	1	1	3	2
Ecuador		3	4	4	3	3	2	2	Sierra Leone		1	1	0	0	0	0	0
El Salvador		0	0	1	2	3	3	4	Singapore		1	1	1	1	0	0	1
Estonia		0	0	0	0	0	0	1	Slovakia		1	1	2	2	4	4	2
Ethiopia		0	0	0	1	1	1	1	Slovenia		2	3	1	1	0	1	1
Finland		0	1	0	1	1	0	0	South Africa		5	5	1	1	2	1	1
France		4	6	8	4	3	3	4	Spain		2	3	2	1	0	1	1
Gabon		0	0	0	0	0	0	1	Sri Lanka		4	4	7	7	5	4	2
Georgia		3	2	0	0	0	0	0	St Vincent & Grenadines		1	1	1	1	0	0	0
Germany		7	7	8	7	7	6	6	Sweden		4	4	5	4	4	3	0
Ghana		0	3	3	2	4	6	8	Taiwan		36	25	17	12	15	14	8
Greece		0	0	1	1	0	0	0	Thailand		5	2	2	3	4	3	2
Grenada		0	0	0	0	0	0	1	Trinidad/Tobago		5	4	3	3	4	2	4
Guatemala		2	3	1	2	1	2	3	Turkey		1	2	1	1	0	2	3
Haiti		0	0	0	0	0	0	1	Uganda		3	2	2	2	1	1	1
Honduras		1	1	2	2	2	3	3	Ukraine		4	1	1	3	2	1	0
Hungary		6	4	1	1	1	1	2	United Arab Emirates		2	0	0	0	0	0	0
India		39	40	45	34	28	25	17	United Kingdom		8	9	8	13	16	14	13
Indonesia		5	3	4	5	5	5	4	Uzbekistan		0	1	1	0	1	1	1
Iran		0	0	1	1	1	1	1	Venezuela		9	11	10	11	11	12	11
Italy		2	2	2	1	0	2	1	Vietnam		2	4	5	4	5	3	5
Jamaica		1	0	0	0	0	1	1	Virgin Islands (British)		0	1	1	1	2	1	1
Japan		10	9	10	13	13	13	12	Yemen (Sanaa)		0	1	1	0	0	0	0
Jordan		0	0	0	0	1	0	0	Yugoslavia		0	1	0	0	0	0	0
Kazakhstan		0	1	0	0	0	0	0	Zaire		0	0	0	0	0	1	1
Kenya		5	3	6	5	4	5	4	Zimbabwe		2	1	2	2	3	3	1
Korea, Dem. People's		3	2	0	0	0	0	0	Unknown		0	1	0	0	0	4	0
Korea, Rep. of		29	28	29	34	36	44	48	Total		405	397	396	388	389	434	417

*Hong Kong counted in China.

Source: International Programs Report, "Annual Census of Foreign Students in the United States"

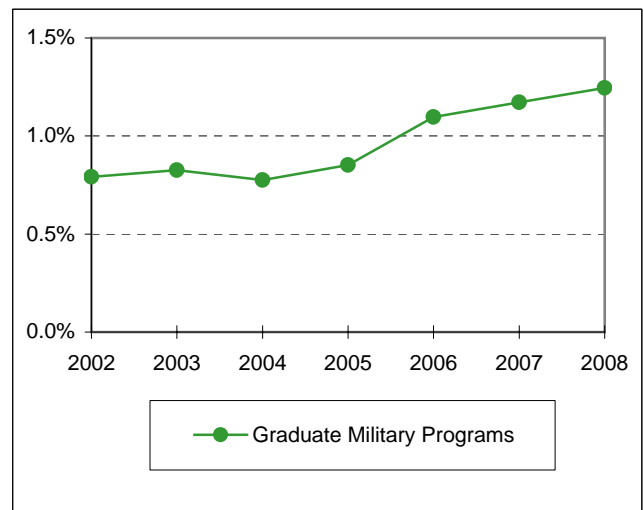
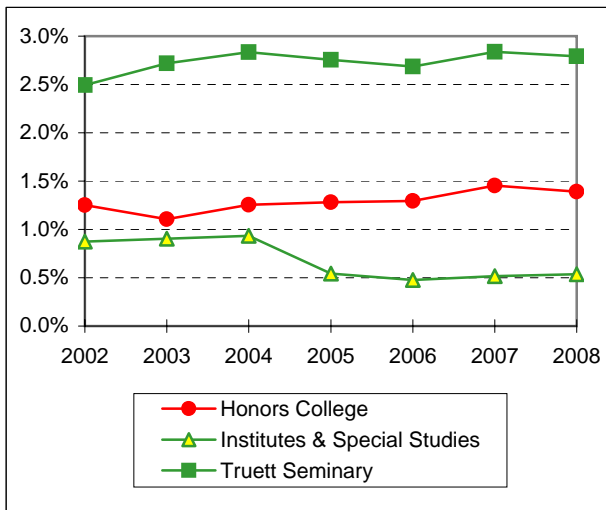
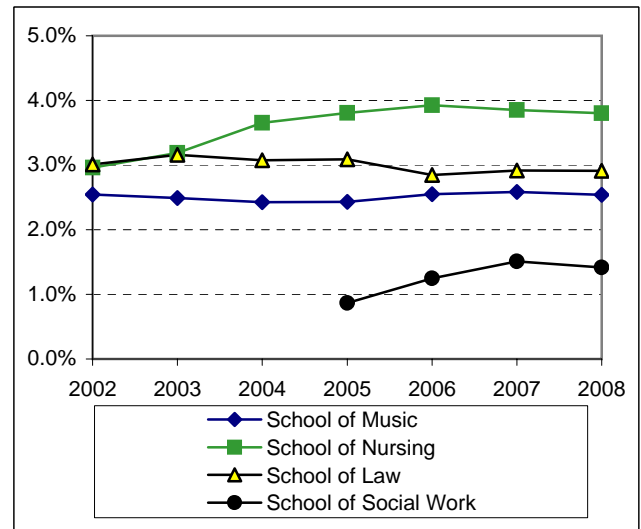
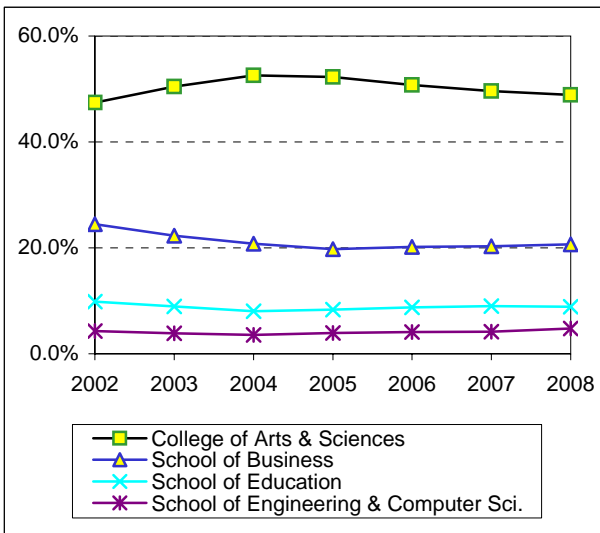
**Enrollment by Unit
Fall 2002 - Fall 2008**

	Fall	2002	2003	2004	2005	2006	2007	2008
College of Arts & Sciences		6,713	7,035	7,257	7,301	7,129	7,034	7,111
School of Business		3,463	3,105	2,872	2,760	2,835	2,880	3,009
School of Education		1,397	1,246	1,105	1,169	1,229	1,272	1,294
School of Engineering & Computer Sci.		605	536	495	551	574	593	696
School of Music		360	347	335	340	358	366	369
School of Nursing		419	444	504	532	551	546	553
School of Social Work					121	175	214	206
Honors College		177	154	173	179	182	206	202
Institutes & Special Studies		124	126	129	76	67	73	78
Graduate School		10	10	7	10	9	9	13
School of Law		426	440	424	432	400	413	423
Truett Seminary		353	379	391	385	377	402	406
Graduate Military Programs		112	115	107	119	154	166	181
TOTAL		14,159	13,937	13,799	13,975	14,040	14,174	14,541

Notes:

1. The enrollment for the Graduate School reflects students classified as "No Major."
2. The Honors College was established in 2002.
3. The School of Social Work was established in 2005.

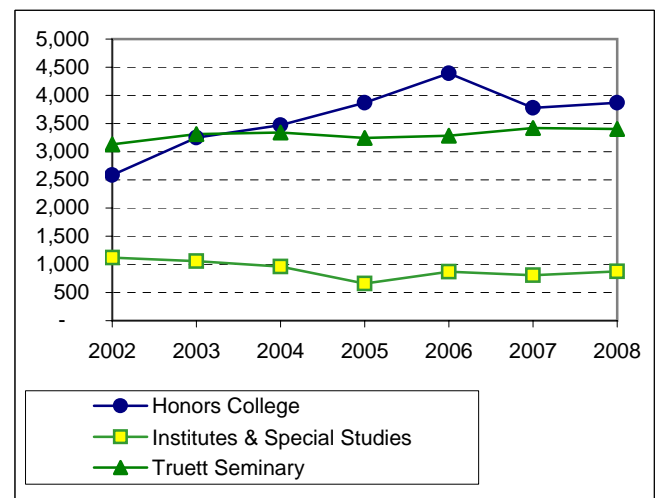
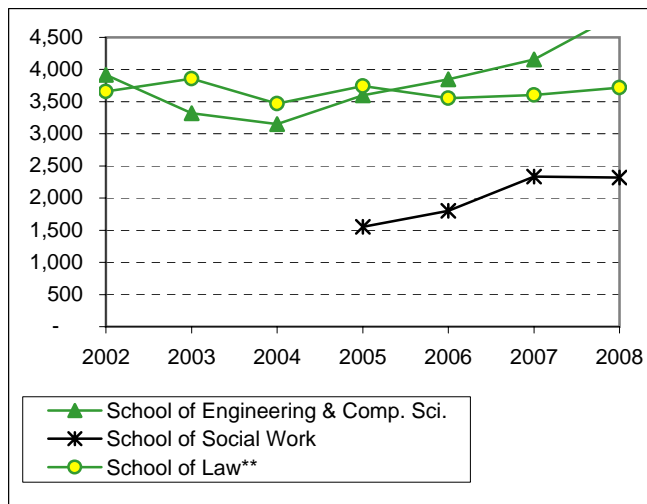
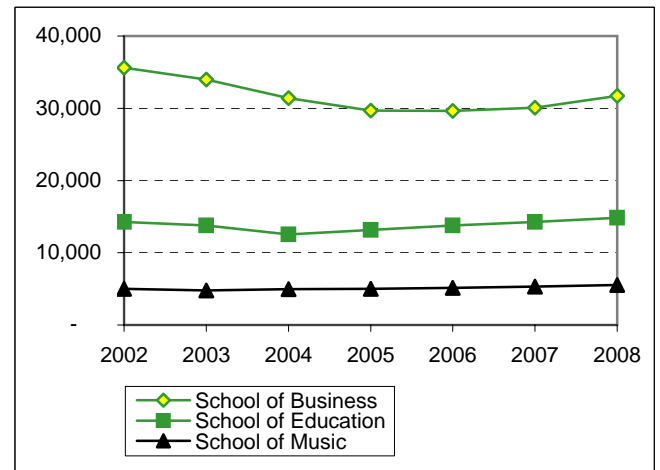
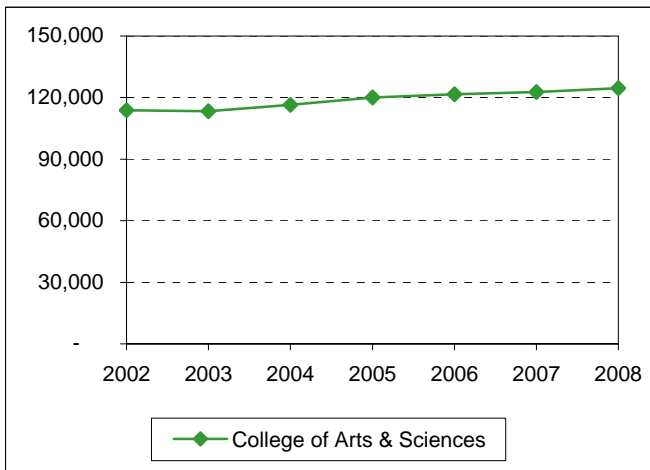
**Enrollment Percentage by Unit
Fall 2002 - Fall 2008**



	Fall	2002	2003	2004	2005	2006	2007	2008
College of Arts & Sciences		47.4%	50.5%	52.6%	52.2%	50.8%	49.6%	48.9%
School of Business		24.5%	22.3%	20.8%	19.7%	20.2%	20.3%	20.7%
School of Education		9.9%	8.9%	8.0%	8.4%	8.8%	9.0%	8.9%
School of Engineering & Computer Sci.		4.3%	3.8%	3.6%	3.9%	4.1%	4.2%	4.8%
School of Music		2.5%	2.5%	2.4%	2.4%	2.5%	2.6%	2.5%
School of Nursing		3.0%	3.2%	3.7%	3.8%	3.9%	3.9%	3.8%
School of Social Work					0.9%	1.2%	1.5%	1.4%
Honors College		1.3%	1.1%	1.3%	1.3%	1.3%	1.5%	1.4%
Institutes & Special Studies		0.9%	0.9%	0.9%	0.5%	0.5%	0.5%	0.5%
Graduate School		0.1%	0.1%	0.1%	0.1%	0.1%	0.1%	0.1%
School of Law		3.0%	3.2%	3.1%	3.1%	2.8%	2.9%	2.9%
Truett Seminary		2.5%	2.7%	2.8%	2.8%	2.7%	2.8%	2.8%
Graduate Military Programs		0.8%	0.8%	0.8%	0.9%	1.1%	1.2%	1.2%

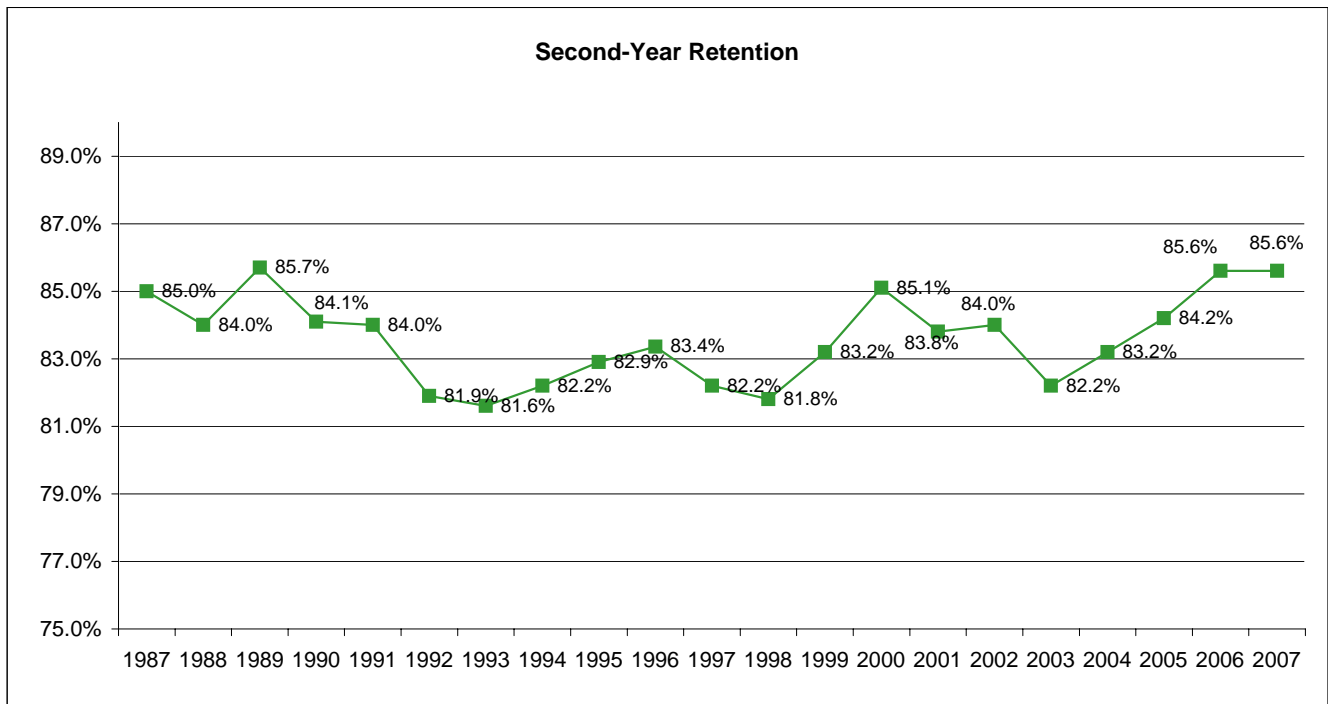
**Student Credit Hours by Unit*
(Excluding Health Sciences)
Fall 2002 - Fall 2008**

	Fall	2002	2003	2004	2005	2006	2007	2008
College of Arts & Sciences		113,781	113,299	116,430	120,123	121,641	122,705	124,545
School of Business		35,600	33,980	31,387	29,696	29,645	30,081	31,733
School of Education		14,272	13,790	12,551	13,175	13,770	14,257	14,833
School of Engineering & Comp. Sci.		3,919	3,321	3,153	3,601	3,847	4,159	4,874
School of Music		4,994	4,797	4,961	5,021	5,126	5,304	5,538
School of Nursing		3,399	3,479	4,107	4,235	4,209	4,215	4,443
School of Social Work					1,551	1,802	2,334	2,321
Honors College		2,588	3,249	3,474	3,872	4,394	3,780	3,870
Institutes & Special Studies		1,122	1,056	963	660	870	809	874
School of Law**		3,660	3,857	3,470	3,745	3,553	3,604	3,721
Truett Seminary		3,130	3,311	3,343	3,242	3,284	3,419	3,406
TOTAL		186,465	184,139	183,839	188,921	192,141	194,667	200,158



Retention of First-Time Freshman Classes Entering Fall 1987 - Fall 2007

First-Time Freshman Class of:	N	After 1 year		After 2 years		After 3 years			After 4 years			After 5 years			After 6 years		
		Cont.	Drop.	Cont.	Drop.	Cont.	Drop.	Grad.	Cont.	Drop.	Grad.	Cont.	Drop.	Grad.	Cont.	Drop.	Grad.
1987	2,313	85.0%	15.0%	75.6%	24.4%	71.7%	27.1%	1.2%	24.2%	28.2%	47.6%	3.4%	28.3%	68.3%	1.1%	28.2%	70.7%
1988	2,302	84.0%	16.0%	75.5%	24.5%	72.5%	26.5%	1.0%	29.8%	28.3%	41.9%	3.3%	28.5%	68.2%	0.8%	27.9%	71.3%
1989	2,357	85.7%	14.3%	74.8%	25.2%	71.2%	27.7%	1.1%	28.3%	28.9%	42.8%	3.9%	28.9%	67.2%	1.2%	28.8%	70.0%
1990	2,435	84.1%	15.9%	73.0%	27.0%	69.8%	29.0%	1.2%	28.1%	29.6%	42.3%	4.2%	30.0%	65.8%	1.6%	29.4%	69.0%
1991	2,156	84.0%	16.0%	74.5%	25.5%	70.7%	28.2%	1.1%	26.5%	29.6%	43.9%	3.8%	29.7%	66.5%	1.3%	29.0%	69.7%
1992	2,367	81.9%	18.1%	71.5%	28.5%	67.2%	31.5%	1.4%	28.4%	32.3%	39.3%	4.8%	32.0%	63.2%	0.9%	32.2%	66.9%
1993	2,433	81.6%	18.4%	72.0%	28.0%	68.4%	30.4%	1.2%	27.5%	32.3%	40.2%	4.5%	32.3%	63.2%	1.3%	31.8%	66.9%
1994	2,351	82.2%	17.8%	72.3%	27.7%	68.5%	30.1%	1.4%	27.0%	31.1%	41.9%	4.9%	31.9%	63.2%	1.5%	31.8%	66.7%
1995	2,339	82.9%	17.1%	76.0%	24.0%	71.4%	27.2%	1.4%	28.8%	28.3%	42.9%	4.4%	28.5%	67.1%	1.2%	28.0%	70.8%
1996	2,476	83.4%	16.6%	74.8%	25.2%	72.2%	26.9%	0.9%	29.4%	27.7%	42.9%	4.0%	27.6%	68.4%	1.3%	27.0%	71.7%
1997	2,410	82.2%	17.8%	73.7%	26.3%	70.3%	28.4%	1.2%	30.0%	29.9%	40.1%	4.9%	29.0%	66.1%	1.4%	28.5%	70.2%
1998	2,938	81.8%	18.2%	75.0%	25.0%	71.1%	27.1%	1.7%	28.9%	28.1%	43.0%	4.6%	29.4%	66.0%	1.4%	26.8%	71.9%
1999	2,772	83.2%	16.8%	75.5%	24.5%	70.7%	27.5%	1.8%	27.7%	27.0%	45.3%	3.9%	27.0%	69.1%	1.2%	26.8%	72.0%
2000	2,832	85.1%	14.9%	77.9%	22.1%	74.3%	25.0%	0.8%	26.4%	24.6%	49.0%	3.6%	24.9%	71.5%	1.1%	25.0%	73.9%
2001	2,801	83.8%	16.2%	75.7%	24.3%	73.3%	25.3%	1.4%	25.2%	26.8%	47.9%	3.5%	27.5%	69.0%	1.0%	27.4%	71.6%
2002	2,620	84.0%	16.0%	76.3%	23.7%	72.6%	25.5%	1.9%	22.7%	26.6%	50.7%	2.7%	26.7%	70.6%	0.8%	26.7%	72.6%
2003	2,678	82.2%	17.8%	74.5%	25.5%	70.6%	27.4%	1.9%	23.7%	28.9%	47.3%	3.6%	29.0%	67.4%			
2004	2,785	83.2%	16.8%	76.0%	24.0%	72.5%	26.0%	1.5%	22.4%	27.4%	50.2%						
2005	3,168	84.2%	15.8%	77.1%	22.8%	71.9%	25.9%	2.1%									
2006	2,783	85.6%	14.4%	78.0%	21.8%												
2007	2,732	85.6%	14.4%														
Average		83.6%	16.4%	75.0%	25.0%	71.1%	27.5%	1.4%	26.9%	28.6%	44.4%	4.0%	28.9%	67.1%	1.2%	28.5%	70.4%
5-year Avg		84.2%	15.8%	76.4%	23.5%	72.2%	26.0%	1.8%	24.1%	26.9%	49.0%	3.5%	27.0%	69.5%	1.1%	26.5%	72.4%



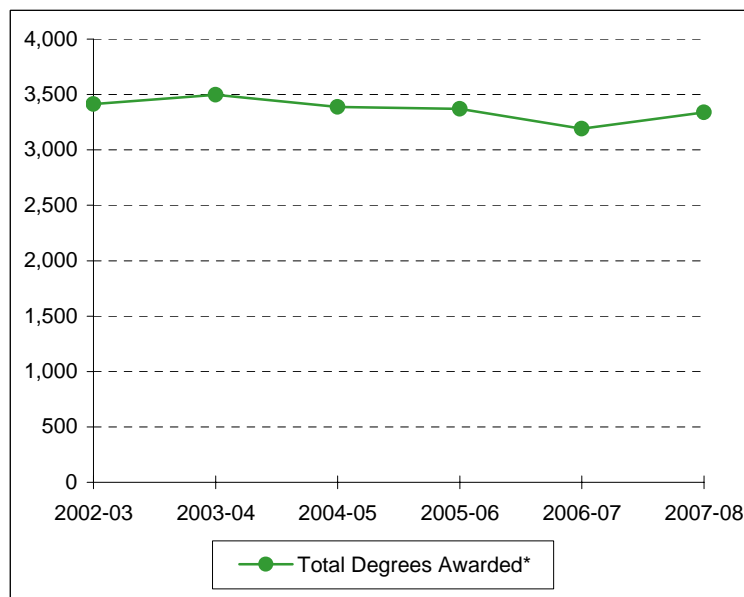
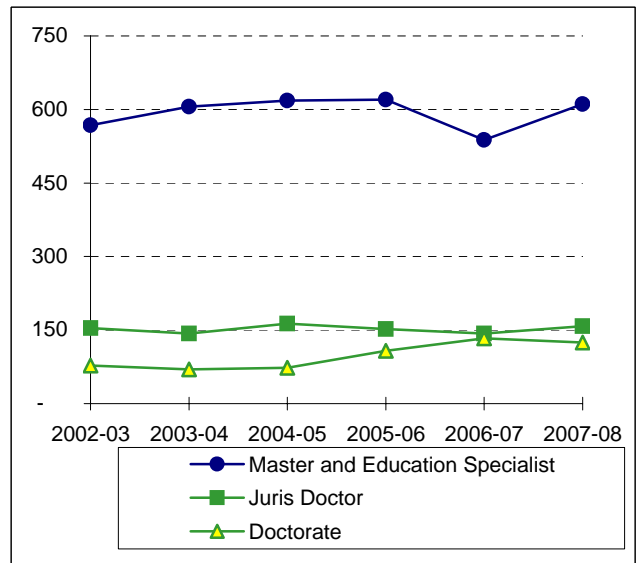
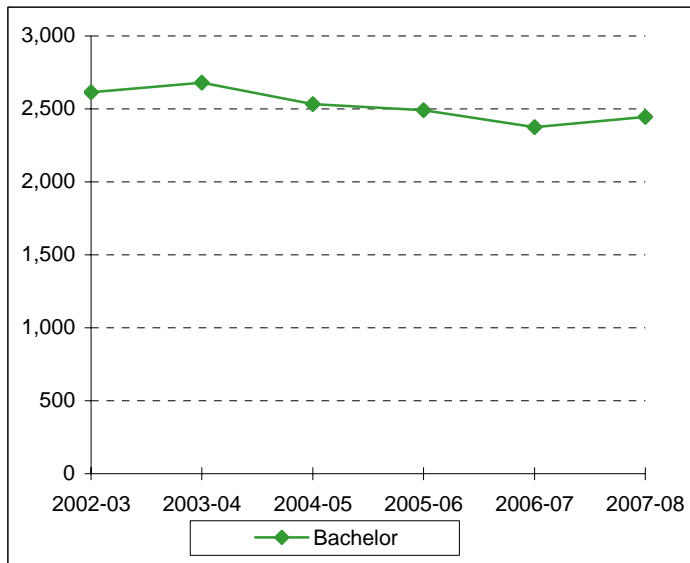
Source: IRT.

Distribution of Degrees (Duplicated Count*)
2002-03 through 2007-08

	2002-03	2003-04	2004-05	2005-06	2006-07	2007-08
Bachelor of Arts	1036	1090	1084	1075	931	1042
Bachelor of Business Administration	1028	1019	909	821	761	760
Bachelor of Fine Arts	40	40	54	42	51	36
Bachelor of Music	29	27	39	36	33	34
Bachelor of Music Education	28	15	19	18	29	21
Bachelor of Science	200	229	261	270	289	306
Bachelor of Science in Aviation Sciences	8	10	6	13	8	6
Bachelor of Science in Computer Science	35	20	17	23	16	14
Bachelor of Science in Education	345	363	213	212	194	245
Bachelor of Science in Electrical & Computer Engineering	23	25	16	24	28	12
Bachelor of Science in Engineering	7	2	1	3	4	1
Bachelor of Science in Family & Consumer Sciences	73	102	87	77	100	87
Bachelor of Science in Informatics	17	16	12	11	9	6
Bachelor of Science in Mechanical Engineering	12	15	20	14	27	22
Bachelor of Science in Nursing	90	85	108	121	123	112
Bachelor of Social Work			2	13	19	36
TOTAL BACHELOR DEGREES	2971	3058	2848	2773	2622	2740
Int'l Masters of Environmental Science	0	0	0	0	0	2
Master of Accountancy	35	47	40	39	33	21
Master of Arts	56	77	74	67	71	62
Master of Business Administration	105	95	104	74	77	104
Master of Business Admin. in International Management	0	0	0	1	0	1
Master of Clinical Gerontology	7					
Master of Divinity	51	71	70	74	57	69
Master of Engineering				1	2	0
Master of Environmental Studies	1	2	2	3	1	1
Master of Fine Arts	0	1	2	2	3	3
Master of Health Administration	38	37	43	45	41	39
Master of International Journalism	1	2	2	1	2	2
Master of International Management	0	1	0	0	0	0
Master of Music	31	23	25	26	28	24
Master of Physical Therapy	18	17	16	0	0	0
Master of Public Policy and Administration	2	6	3	3	0	1
Master of Science	34	22	44	38	33	35
Master of Science in Biomedical Engineering				2	1	1
Master of Science in Clinical Psychology	11	11	11	7	4	5
Master of Science in Communication Sciences & Disorders	26	33	22	34	25	30
Master of Science in Economics	4	10	4	8	9	6
Master of Science in Education	64	77	80	97	74	93
Master of Science in Electrical/Computer Engineering			1	6	1	2
Master of Science in Gerontology	12					
Master of Science in Information Systems	18	14	15	15	12	14
Master of Science in Mechanical Engineering				1	0	1
Master of Science in Nursing	13	21	15	20	15	14
Master of Social Work	29	25	32	39	30	63
Master of Taxation	10	10	11	13	11	10
Master of Theological Studies				2	4	4
TOTAL MASTER'S DEGREES	566	602	616	618	534	605
TOTAL EDUCATION SPECIALIST DEGREES	4	4	2	2	7	4
TOTAL JURIS DOCTOR DEGREES	154	143	163	163	143	158
Doctor of Education	25	23	22	26	10	6
Doctor of Ministry	7	3	5	5	8	5
Doctor of Philosophy	31	34	29	50	56	37
Doctor of Psychology	11	7	12	9	12	8
Doctor of Physical Therapy				14	43	62
Doctor of Science in Physical Therapy	4	3	5	4	4	3
Doctor of Science in Physician Asst Studies	0	0	0	0	0	4
TOTAL DOCTORAL DEGREES	78	70	73	108	133	121

* Degree information on this page is reported beginning with the Summer semester and including the following Fall and Spring terms.
An individual graduate with multiple majors is counted as a whole graduate in each major area of study (i.e., duplicated count).

**Summary of Degrees Awarded (Unduplicated Count*)
2002-03 through 2007-08**



Degree Level:	2002-03	2003-04	2004-05	2005-06	2006-07	2007-08
Bachelor	2,615	2,679	2,533	2,491	2,376	2,445
Master and Education Specialist	568	606	618	620	538	611
Juris Doctor	154	143	163	152	143	158
Doctorate	78	70	73	108	133	125
Total Degrees Awarded*	3,415	3,498	3,387	3,371	3,190	3,339

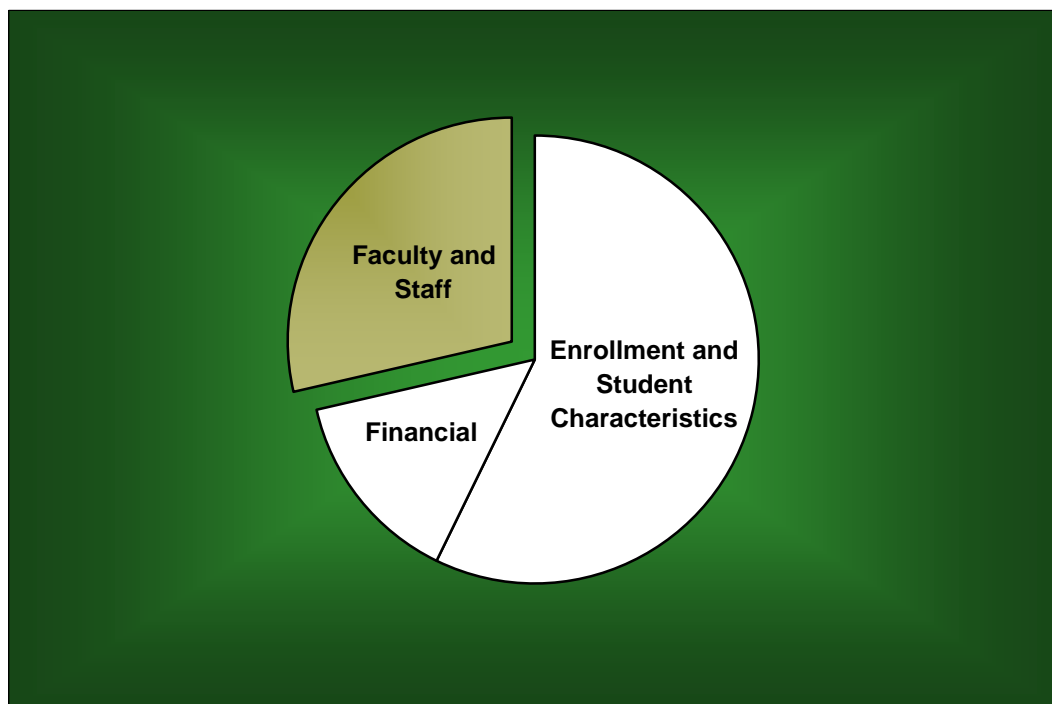
*The information on this page indicates the number of degree recipients (i.e., unduplicated count). Degree information is reported beginning with the Summer semester and including the following Fall and Spring terms.

**Degree Programs
(as of December 2008)**

Accounting (BBA)	Communication Sci. & Disorders (MSCSD)	Fashion Design (BSFCS)
Accounting (MAcc)	Communication Specialist (BA)	Fashion Merchandising (BA)
Advanced Nursing Leadership (MSN)	Communication Studies (MA)	Fashion Merchandising (BSFCS)
Air Science and Environment (IMES)	Community Health (BSEd)	Film and Digital Media (BA)
American Studies (BA)	Composition (BM)	Finance (BBA)
American Studies (MA)	Composition (MM)	Financial Services / Planning (BBA)
Anthropology (BA)	Computer Science (BA)	Forestry (BA)
Anthropology (BS)	Computer Science (BSCS)	Forestry (BS)
Applied Mathematics (BS)	Computer Science (MS)	French (BA)
Applied Music (BM)	Computer Science Fellows (BSC)	General Family & Consumer Sci. (BA)
Architecture (BA)	Conducting (MM)	General Family & Consumer Sci. (BSFCS)
Art History (BA)	Curriculum & Instruction (EdD)	General Studies in HHPR (BSEd)
Asian Studies (BA)	Curriculum & Instruction (MA)	Geography (BA)
Athletic Training (BSEd)	Curriculum & Instruction (MSEd)	Geology (BS)
Aviation Sciences (BSAvSc)	Dentistry (BA)	Geology (MS)
Baylor Business Fellows (BBA)	Dentistry (BS)	Geology (PhD)
Biblical & Related Languages (BA)	Directing (MFA)	Geophysics (BS)
Biochemistry (BA)	Distribution Management/Technology (BBA)	German (BA)
Biochemistry (BS)	Earth Science (BA)	Great Texts of the Western Tradition (BA)
Bioinformatics (BSI)	Earth Science (MA)	Greek (BA)
Biology (BA)	Ecological, Earth & Environmental Sciences (PhD)	Health Care Administration (MHA)
Biology (BS)	Economics (BA)	Health, Human Perf. & Recreation (MSEd)
Biology (MA)	Economics (BBA)	Health Science Studies (BSEd)
Biology (MS)	Economics (BS)	History (BA)
Biology (PhD)	Economics (MSEco)	History (MA)
Biomedical Engineering (MSBME)	Education (MA)	Human Resources Management (BBA)
Biomedical Studies (MS)	Educational Administration (EdS)	Information Systems (BBA)
Biomedical Studies (PhD)	Educational Administration (MSEd)	Information Systems Management (MBA)
Business Administration (MBA)	Educational Psychology (EdS)	Information Systems (MSIS)
Business for Secondary Education (BBA)	Educational Psychology (MA)	Information Systems (PhD)
Business French (BBA)	Educational Psychology (MSEd)	Instrumental Music (BME)
Business German (BBA)	Educational Psychology (PhD)	Interior Design (BA)
Business - Journalism (BBA)	Electrical & Computer Engineering (BSECE)	Interior Design (BSFCS)
Business Russian (BBA)	Electrical & Computer Engineering (MSECE)	International Business (BBA)
Business Spanish (BBA)	Elementary Education (BSEd)	International Economics (MA)
Chemistry (BA)	Emergency Medicine (DScPAS)	International Economics (MS)
Chemistry (BS)	Engineering (BSE)	International Journalism (MIJ)
Chemistry (MS)	Engineering (ME)	International Management (MBA)
Chemistry (PhD)	English (BA)	International Management (MBAIM)
Child & Family Studies (BA)	English (MA)	International Relations (MA)
Child & Family Studies (BSFCS)	English (PhD)	International Studies (BA)
Choral Music (BME)	Entrepreneurship (BBA)	Journalism (BA)
Church Music (BM)	Environmental Biology (MS)	Journalism (MA)
Church Music (MM)	Environmental Science (BS)	Language and Linguistics (BA)
Church-State Studies (MA)	Environmental Studies (BA)	Latin American Studies (BA)
Church-State Studies (PhD)	Environmental Studies (BS)	Latin (BA)
Classics (BA)	Environmental Studies (MES)	Law (JD)
Clinical Laboratory Science (BS)	Environmental Studies (MS)	Limnology (MSL)
Clinical Psychology (MSCP)	Exercise, Nutrition and Preventive Health (PhD)	Management (BBA)
Clinical Psychology (PsyD)	Exercise Physiology (BSEd)	Marketing (BBA)
Communication Sci. & Disorders (BA)	Family Nurse Practitioners (MSN)	Mathematics (BA)
Communication Sci. & Disorders (MA)	Fashion Design (BA)	Mathematics (BS)

Mathematics (MS)	Public Administration (BBA)
Mathematics (PhD)	Public Policy & Administration (MPPA)
Mechanical Engineering (BSME)	Real Estate (BBA)
Mechanical Engineering (MSME)	Recreation (BSEd)
Media Business (BBA)	Religion (BA)
Medical Humanities (BA)	Religion (MA)
Medicine (BA)	Religion (PhD)
Medicine (BS)	Religion, Politics and Society (PhD)
Middle Grades English Lang Arts Reading	Risk Management and Insurance (BBA)
Middle Grades Mathematics (BSEd)	Russian (BA)
Middle Grades Science (BSEd)	Secondary English Lang Arts Reading (BSEd)
Middle Grades Social Studies (BSEd)	Secondary Life Sciences (BSEd)
Ministry (DMin)	Secondary Mathematics (BSEd)
Museum Studies (MA)	Secondary Physical Sciences (BSEd)
Music (BA)	Secondary Social Studies (BSEd)
Music Education (MM)	Slavic and East European Studies (BA)
Music History & Literature (BM)	Social Work (BSW)
Music History & Literature (MM)	Social Work (MSW)
Music Theory (MM)	Sociology (BA)
Neonatal Nurse Practitioner (MSN)	Sociology (MA)
Neuroscience (BS)	Sociology (PhD)
Neuroscience (MA)	Spanish All-Level (BSEd)
Nurse-Midwifery (BSN)	Spanish (BA)
Nursing (BSN)	Spanish (MA)
Nutrition (MS)	Special Education All-Level (BSEd)
Nutrition Sciences (BA)	Speech Communication (BA)
Nutrition Sciences (BS)	Sports, Sponsorship & Sales (BBA)
Nutrition Sciences (BSFCS)	Statistics (BS)
Optometry (BA)	Statistics (MS)
Optometry (BS)	Statistics (PhD)
Pedagogy (BM)	Studio Art (BA)
Performance (MM)	Studio Art (BFA)
Philosophy (BA)	Taxation (MT)
Philosophy (MA)	Theater Arts (BA)
Philosophy (PhD)	Theater Arts (MA)
Physical Education All-Level (BSEd)	Theater Design (BFA)
Physical Therapy (DPT)	Theater Performance (BFA)
Physical Therapy (DScPT)	Theological Studies (MTS)
Physics (BA)	Theology (MDiv)
Physics (BS)	Theory (BM)
Physics (MA)	University Scholars (BA)
Physics (MS)	
Physics (PhD)	
Piano Accompanying (MM)	
Piano Pedagogy & Performance (MM)	
Political Science (BA)	
Political Science (MA)	
Political Science (PhD)	
Professional Selling (BBA)	
Professional Writing (BA)	
Psychology (BA)	
Psychology (BS)	
Psychology (PhD)	

Faculty and Staff



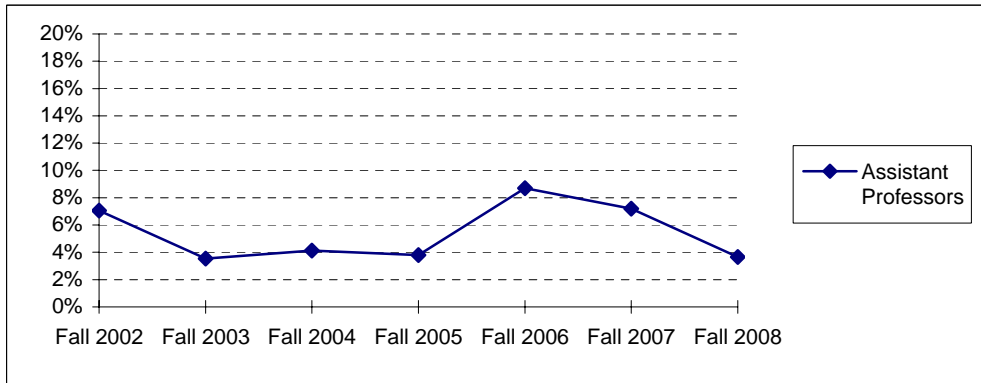
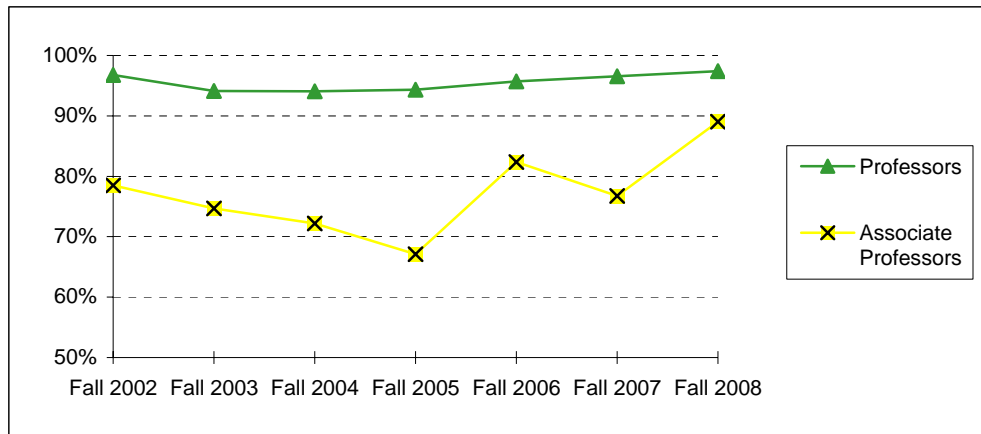
**Full-Time Faculty Positions (AAUP Definition)
Fall 2002 - Fall 2008**

Rank	Fall 2002		Fall 2003		Fall 2004		Fall 2005		Fall 2006		Fall 2007		Fall 2008	
	Male	Female	Male	Female	Male	Female	Male	Female	Male	Female	Male	Female	Male	Female
Professors:														
Number	213	33	210	29	205	32	197	32	198	35	195	36	195	36
Tenured	205	33	196	29	191	32	186	30	188	35	187	36	189	36
Associate Prof.:														
Number	96	48	105	49	108	43	108	44	124	46	131	54	139	62
Tenured	71	42	75	40	74	35	68	34	100	40	100	42	123	56
Assistant Prof:														
Number	93	63	99	70	102	68	98	60	84	54	96	57	83	54
Tenured	3	8	2	4	3	4	2	4	5	7	4	7	2	3
Instructors:														
Number	0	1	0	0	0	1	0	1	0	1	0	1	0	1
Tenured	0	0	0	0	0	1	0	1	0	1	0	1	0	1
Senior Lecturers:														
Number	22	39	22	38	21	37	21	33	21	33	27	38	32	52
Lecturers:														
Number	58	90	62	93	64	89	70	91	75	96	78	100	70	99
Total Number	482	274	498	279	500	270	494	261	502	265	527	286	519	304
Total Tenured	279	83	273	73	268	72	256	69	293	83	291	86	314	96

**Highest Degree Earned by Full-Time Faculty
Fall 2002 - Fall 2008**

	Fall 2002	Fall 2003	Fall 2004	Fall 2005	Fall 2006	Fall 2007	Fall 2008
Associate's	1	1	1	0	0	0	0
Bachelor's	1	2	2	6	5	3	2
Master's	199	222	213	200	180	190	201
Doctoral	550	569	572	566	591	631	633
Professional	26	26	26	24	28	27	27
Total	777	820	814	796	804	851	863

**Percentage of Full-Time Faculty with Tenure (AAUP Definition)
Fall 2002 - Fall 2008**



	Fall 2002	Fall 2003	Fall 2004	Fall 2005	Fall 2006	Fall 2007	Fall 2008
Professors	96.7%	94.1%	94.1%	94.3%	95.7%	96.5%	97.4%
Associate Professors	78.5%	74.7%	72.2%	67.1%	82.4%	76.8%	89.1%
Assistant Professors	7.1%	3.6%	4.1%	3.8%	8.7%	7.2%	3.6%
Instructors	0.0%					100.0%	100.0%
All Faculty	47.9%	44.5%	44.2%	43.0%	49.0%	46.4%	49.8%

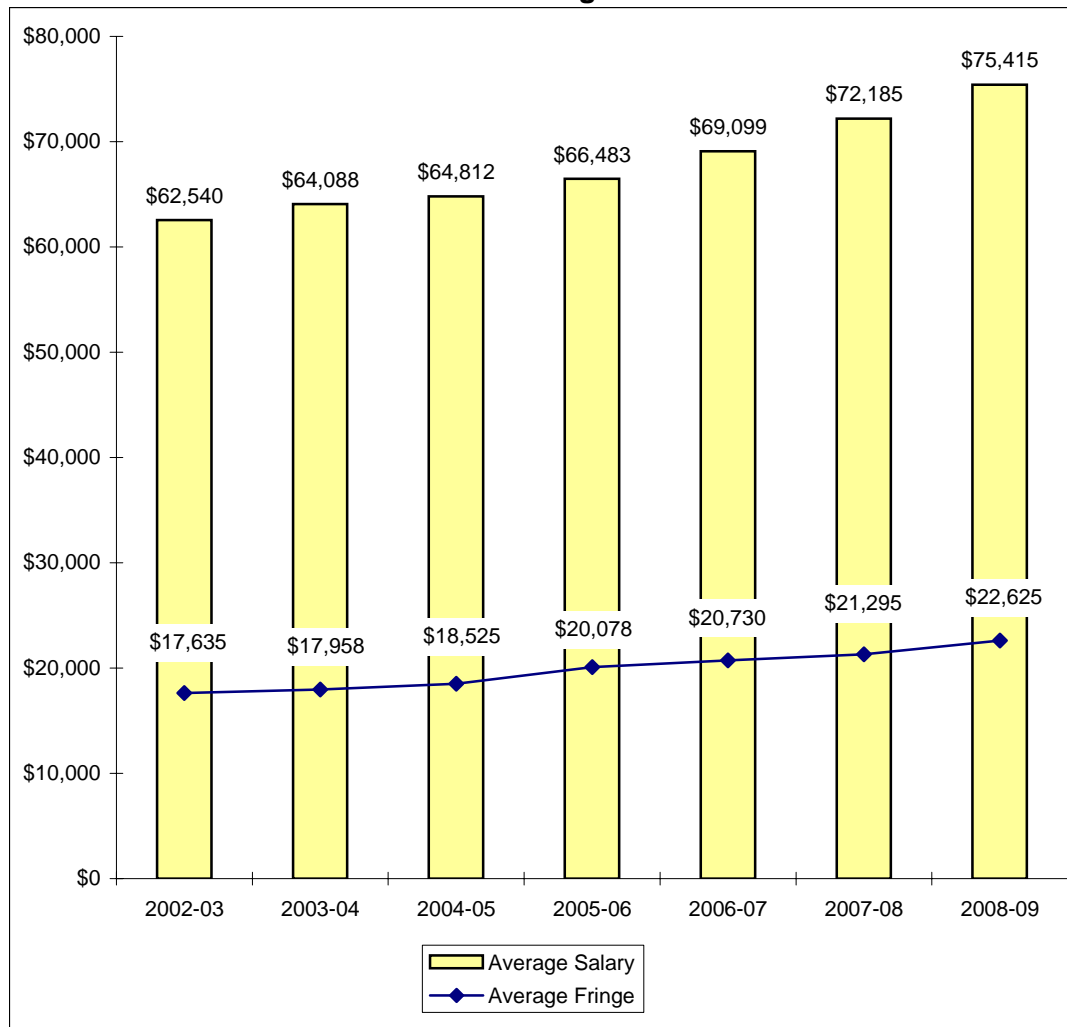
**Average Salaries of Full-Time Instructional Faculty
on Academic Year Contracts (AAUP Definition)
Fall 2002 - Fall 2008**

Rank	Fall 2002		Fall 2003		Fall 2004		Fall 2005	
	Number in Rank	Average Salary	Number in Rank	Average Salary	Number in Rank	Average Salary	Number in Rank	Average Salary
Professor	246	\$83,562	239	\$86,590	237	\$87,091	229	\$89,219
Associate Professor	144	\$65,136	154	\$67,706	151	\$67,501	152	\$68,432
Assistant Professor	156	\$55,208	169	\$57,177	170	\$58,675	158	\$52,385
Instructor	1	*	0		1	*	1	*
Senior Lecturer	61	\$46,482	60	\$47,826	58	\$47,719	54	\$48,728
Lecturer	148	\$39,478	155	\$39,627	153	\$41,055	161	\$42,388
All Ranks	756	\$62,540	777	\$64,088	770	\$64,812	755	\$66,483
Average Fringe		\$17,635		\$17,958		\$18,525		\$20,078
Fringe as a Percentage of Average Salary		28.2%		28.0%		28.6%		30.2%
Percentage Increase in Average Salary for Continuing Faculty		4.9%		3.4%		0.2%		3.4%

Rank	Fall 2006		Fall 2007		Fall 2008	
	Number in Rank	Average Salary	Number in Rank	Average Salary	Number in Rank	Average Salary
Professor	233	\$92,385	231	\$97,241	231	\$102,398
Associate Professor	170	\$70,179	185	\$74,681	201	\$78,043
Assistant Professor	138	\$67,143	153	\$69,536	137	\$70,562
Instructor	1	*	1	*	1	*
Senior Lecturer	54	\$50,950	65	\$52,175	84	\$55,668
Lecturer	171	\$43,710	178	\$46,765	169	\$49,274
All Ranks	767	\$69,099	813	\$72,185	823	\$75,415
Average Fringe		\$20,730		\$21,295		\$22,625
Fringe as a Percentage of Average Salary		30.0%		29.5%		30.0%
Percentage Increase in Average Salary for Continuing Faculty		5.0%		6.0%		5.8%

*Data not displayed for five or fewer faculty.

**Average Compensation of Full-Time Instructional Faculty
on Academic Year Contracts
2002-03 through 2008-09**

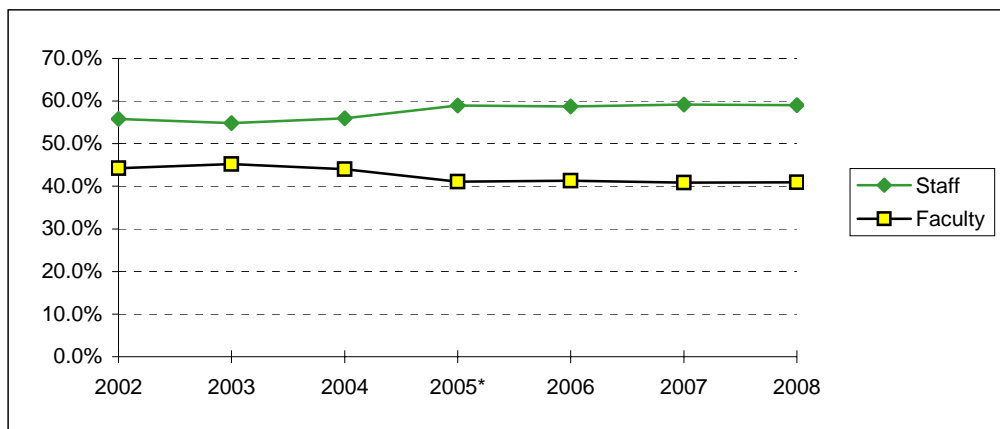


**Institutional Staff
Fall 2002 - Fall 2008**

Fall	2002	2003	2004	2005*	2006	2007	2008
Faculty:							
Full-Time	806	851	834	755	767	813	823
Part-Time	110	144	113	155	161	159	171
Executive/Administrative:							
Full-Time	173	181	188	221	251	275	285
Part-Time	1	1	2	1	1	1	2
Other Professional:							
Full-Time	421	453	456	500	476	532	566
Part-Time	14	11	18	18	16	18	22
Technical/Paraprofessional:							
Full-Time	33	40	40	105	139	143	128
Part-Time	4	2	3	17	18	18	17
Clerical/Secretarial:							
Full-Time	399	408	396	335	332	325	323
Part-Time	39	42	39	33	27	33	27
Skilled Crafts:							
Full-Time	7	6	6	7	7	7	7
Part-Time	0	0	0	1	1	0	0
Service/Maintenance:							
Full-Time	57	58	49	58	42	47	49
Part-Time	7	5	7	10	10	10	8
Total:							
Full-Time	1896	1997	1969	1981	2014	2142	2181
Part-Time	175	205	182	235	234	239	247
Grand Total	2071	2202	2151	2216	2248	2381	2428

*2005 shifts in categorization of employees due to internal reclassification and IPEDS reporting changes.

**Percentage of Institutional Staff
Fall 2002 - Fall 2008**



Fall	2002	2003	2004	2005*	2006	2007	2008
Staff	55.8%	54.8%	56.0%	58.9%	58.7%	59.2%	59.1%
Faculty	44.2%	45.2%	44.0%	41.1%	41.3%	40.8%	40.9%

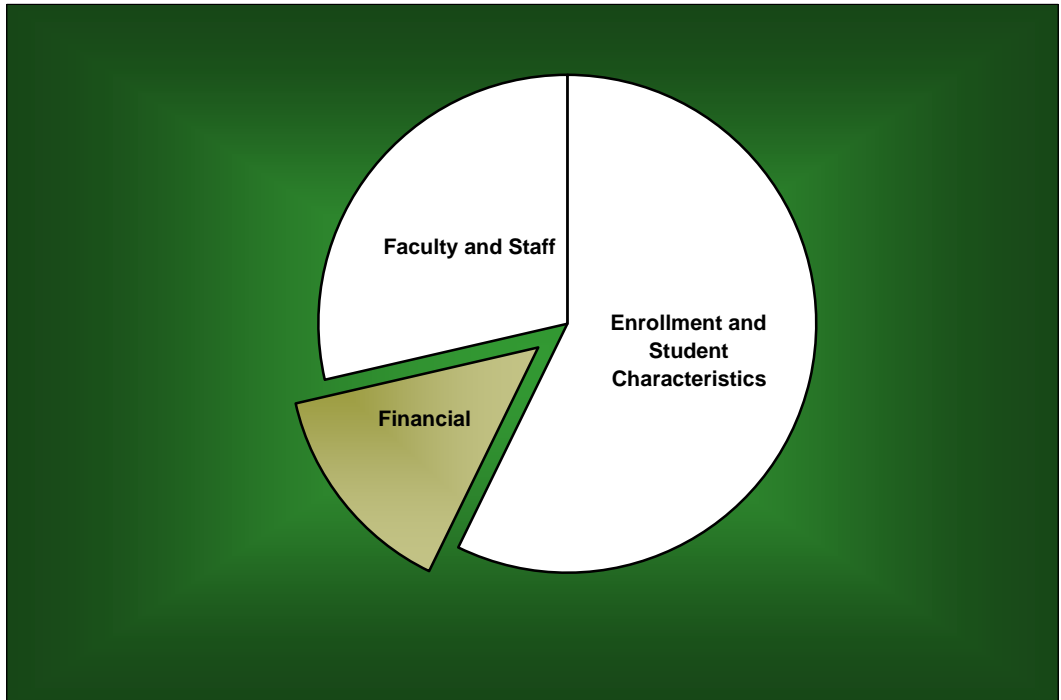
**Full-Time Faculty by Religious Affiliation
Fall 2002 - Fall 2008**

Fall	2002	2003	2004	2005	2006	2007	2008
Assembly of God	1	1	1	1	1	2	2
Baptist	381	401	390	375	368	379	381
Catholic	61	73	78	79	81	87	91
Church of Christ	21	20	20	18	22	23	24
Disciples of Christ	14	15	14	11	11	12	11
Episcopalian	51	53	52	54	56	60	60
Lutheran	41	46	46	47	46	51	52
Methodist	81	80	79	78	75	78	77
Non-/Inter-Denominational	17	17	21	24	24	28	18
Presbyterian	49	50	51	49	54	59	56
Other / Unspecified	60	64	62	60	66	72	91
Total	777	820	814	796	804	851	863

**Full-Time Staff by Religious Affiliation
Fall 2002 - Fall 2008**

Fall	2002	2003	2004	2005	2006	2007	2008
Assembly of God	7	11	10	9	8	9	8
Baptist	594	614	592	618	612	646	645
Catholic	110	112	117	108	117	128	138
Church of Christ	37	34	33	35	36	36	36
Disciples of Christ	20	21	19	18	16	13	12
Episcopalian	26	26	30	26	21	25	30
Lutheran	36	35	35	35	40	40	46
Methodist	110	115	109	110	117	124	128
Non/Inter-Denominational	42	58	64	63	81	98	99
Presbyterian	28	25	22	27	33	36	38
Other / Unspecified	80	100	95	96	98	104	108
Total	1090	1151	1126	1145	1179	1259	1288

Financial



**Undergraduate Tuition and Other Semester Charges
2002-03 through 2008-09**

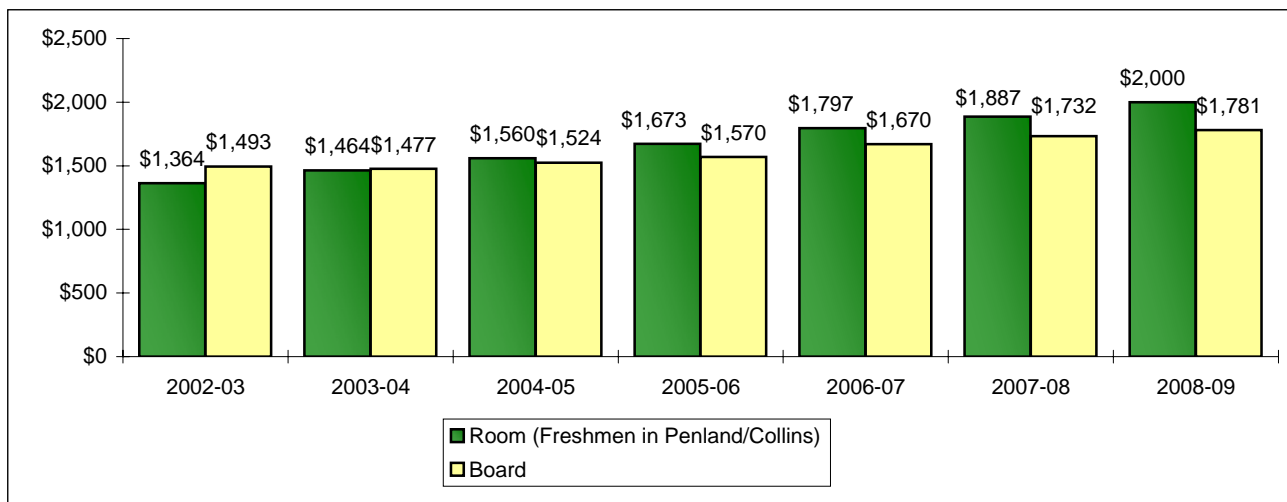
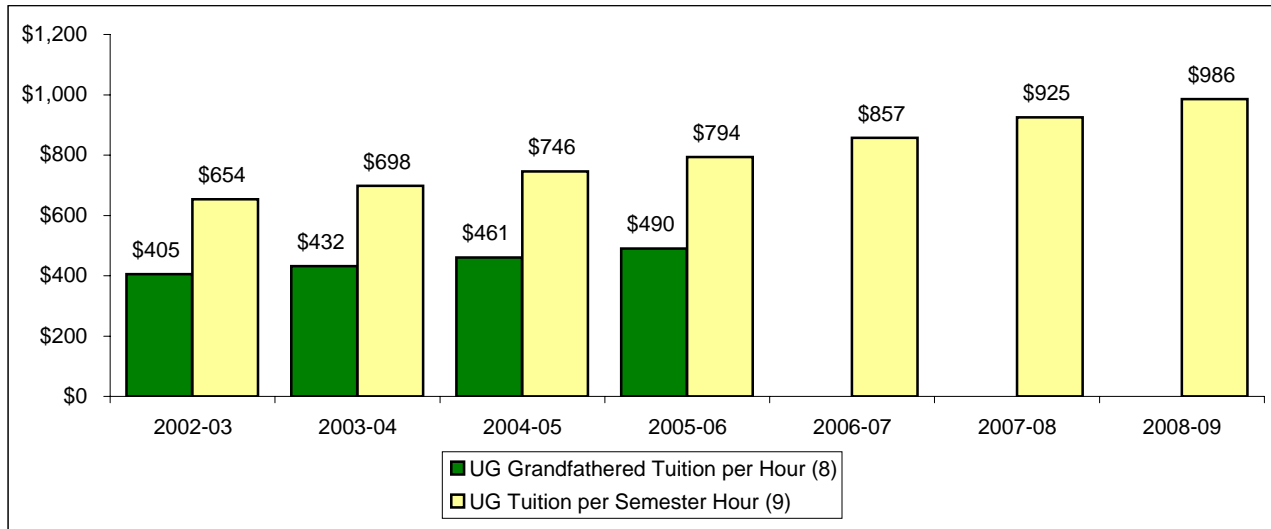
	2002-03	2003-04	2004-05	2005-06	2006-07	2007-08	2008-09
UG Grandfathered Tuition per Hour (8)	\$405.00	\$432.00	\$461.00	\$490.00			
Increase from Prior Year	6.9%	6.7%	6.7%	6.3%			
UG Tuition per Semester Hour (9)	\$654.00	\$698.00	\$746.00	\$794.00	\$857.00	\$925.00	\$986.00
Increase from Prior Year		6.7%	6.9%	6.4%	7.9%	7.9%	6.6%
UG Flat Tuition Rate (7)	\$15,700	\$16,750	\$17,900	\$19,050	\$20,574	\$22,220	\$23,664
Increase from Prior Year		6.7%	6.9%	6.4%	8.0%	8.0%	6.5%
Application Fee (UG)	35.00	35.00	35.00	50.00	50.00	50.00	50.00
Applied Music Fee(1)	125.00	133.00	142.00	151.00	163.00	175.00	186.00
Change-of-Course Fee	20.00	20.00	20.00	20.00	20.00	20.00	20.00
Chapel-Forum Fee	25.00	30.00	50.00	55.00	55.00	55.00	55.00
Credit by Baylor Exam Fee	203.00	216.00	230.00	245.00	265.00	286.00	305.00
General Student Fee	625.00	690.00	745.00	800.00	1,070.00	1,135.00	1,210.00
Enrollment Deposit (2)	100.00	100.00	100.00	100.00	100.00	100.00	100.00
Lab/Course Fees (3)	25.00	35.00	50.00	50.00	50.00	50.00	50.00
Late Registration Fee (4)	20.00	20.00	30.00	50.00	50.00	50.00	75.00
Technology Fee (10)	107.00	150.00	195.00	210.00	0.00	0.00	0.00
Vehicle Registration Fee (5)	175.00	175.00	175.00	175.00	175.00	175.00	200.00
Room (Freshmen in Penland/Collins)	1,364.00	1,464.00	1,560.00	1,673.00	1,797.00	1,887.00	2,000.00
Increase from Prior Year	5.3%	7.3%	6.6%	7.2%	7.4%	5.0%	6.0%
Board (6)	1,493.18	1,476.53	1,524.16	1,569.63	1,669.63	1,732.41	1,781.38
Increase from Prior Year	2.3%	-1.1%	3.2%	3.0%	6.4%	3.8%	2.8%

Increase in Semester Charges from 2002-03 to 2008-09:	Tuition, per semester hour	50.8%
	Room	46.6%
	Board	19.3%

Notes:

- (1) Supplemental charge per semester for one 30-minute lesson per week.
- (2) The Enrollment Deposit is paid to assure enrollment place and is applied on the student's first semester bill.
- (3) Minimum lab fee is noted; some courses may be higher.
- (4) Minimum charges are noted; charges vary.
- (5) Annual automobile fee (September - August).
- (6) For 2002-03 through 2003-04, Board rate reflects the "Classic - 16 Plus Meal Plan," per semester, including tax. The 2003-04 through 2005-06 Board rate reflects the "Classic -16 Meal Plan" but meal plan does not include BearBucks. The 2006-07 Board rate reflects the "Classic - 16 Meal Plan" + \$100 Dining Dollars. The 2007-08 and 2008-09 Board rates reflect "The Works - 16 Meal Plan" + \$100 Dining Dollars.
- (7) Beginning in 2002-03, a flat tuition rate was instituted for new undergraduate students taking 12 or more hours per semester (Fall and Spring).
- (8) Beginning in 2002-03, the tuition per semester hour rate is applicable for students who were enrolled at Baylor prior to June 1, 2002 (grandfathered rate). The grandfathered tuition rate was discontinued after the 2005-06 fiscal year.
- (9) Tuition per semester hour for new students taking less than 12 hours.
- (10) Technology fee is now combined with General Student Fee.

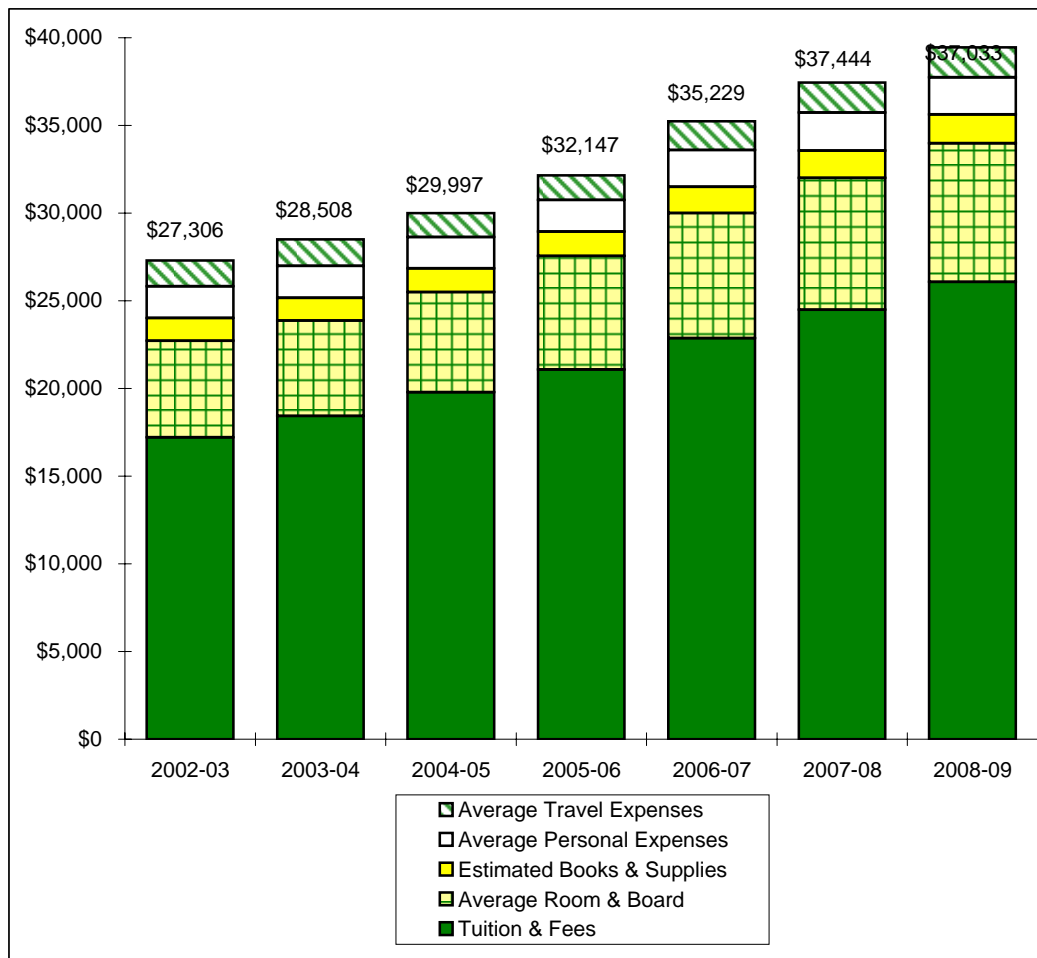
Tuition, Room and Board Charges 2002-03 through 2008-09



See notes on page 28.

Annual Undergraduate Student Cost Profile 2002-03 through 2008-09

	2002-03	2003-04	2004-05	2005-06	2006-07	2007-08	2008-09
Tuition & Fees	\$17,214	\$18,430	\$19,780	\$21,070	\$22,869	\$24,490	\$26,084
Average Room & Board	5,514	5,434	5,713	6,485	7,125	7,526	7,895
Estimated Books & Supplies	1,280	1,298	1,356	1,382	1,502	1,548	1,634
Average Personal Expenses	1,806	1,832	1,778	1,813	2,108	2,172	2,120
Average Travel Expenses	1,492	1,514	1,370	1,397	1,625	1,708	1,720
Average Total Cost	\$27,306	\$28,508	\$29,997	\$32,147	\$35,229	\$37,444	\$39,453
Increase from Prior Year	19.8%	4.4%	5.2%	7.2%	9.6%	6.3%	5.4%



Note: In 2002-03 a flat tuition rate was instituted for new students taking 12 or more hours per semester (Fall and Spring).

**Operating Funds
2001-02 through 2007-08**

Sources of Revenues

	2001-02	2002-03	2003-04	2004-05	2005-06	2006-07	2007-08
Tuition & Fees	\$180,194,091	\$205,208,253	\$228,672,157	\$253,947,979	\$286,798,199	\$313,899,972	\$342,097,694
Gifts/Private Grants	6,107,120	4,915,658	3,957,986	4,106,405	4,667,051	4,954,597	6,439,884
BGCT Appropriation	3,822,637	3,846,290	3,832,014	3,721,275	3,517,856	3,504,658	3,439,127
Endowment Income	13,698,822	17,771,203	21,035,555	22,429,350	22,661,361	23,424,913	23,663,760
Investment Income	1,635,000	919,715	635,674	1,333,628	3,913,218	6,053,815	4,993,909
Other Sources	12,921,478	12,434,554	13,900,817	15,406,112	14,707,559	17,042,155	19,374,663
Auxiliary Enterprises	40,185,133	39,019,089	37,156,315	40,774,330	45,675,394	46,691,476	51,684,175
Total Revenues	\$258,564,281	\$284,114,762	\$309,190,518	\$341,719,079	\$381,940,638	\$415,571,586	\$451,693,212

Sources of Revenues as a Percentage of Total Revenues

	2001-02	2002-03	2003-04	2004-05	2005-06	2006-07	2007-08
Tuition & Fees	69.7%	72.2%	73.9%	74.2%	75.2%	75.6%	75.8%
Gifts/Private Grants	2.4%	1.7%	1.3%	1.2%	1.2%	1.2%	1.4%
BGCT Appropriation	1.5%	1.4%	1.2%	1.1%	0.9%	0.8%	0.8%
Endowment Income	5.4%	6.3%	6.8%	6.6%	5.9%	5.6%	5.2%
Investment Income	0.6%	0.3%	0.2%	0.4%	1.0%	1.5%	1.1%
Other Sources	5.0%	4.4%	4.5%	4.5%	3.9%	4.1%	4.3%
Auxiliary Enterprises	15.5%	13.7%	12.0%	11.8%	11.9%	11.2%	11.4%
Total Revenues	100.0%	100.0%	100.0%	100.0%	100.0%	100.0%	100.0%

Operating Funds (Continued)
2001-02 through 2007-08

Expenditures by Function & Transfers

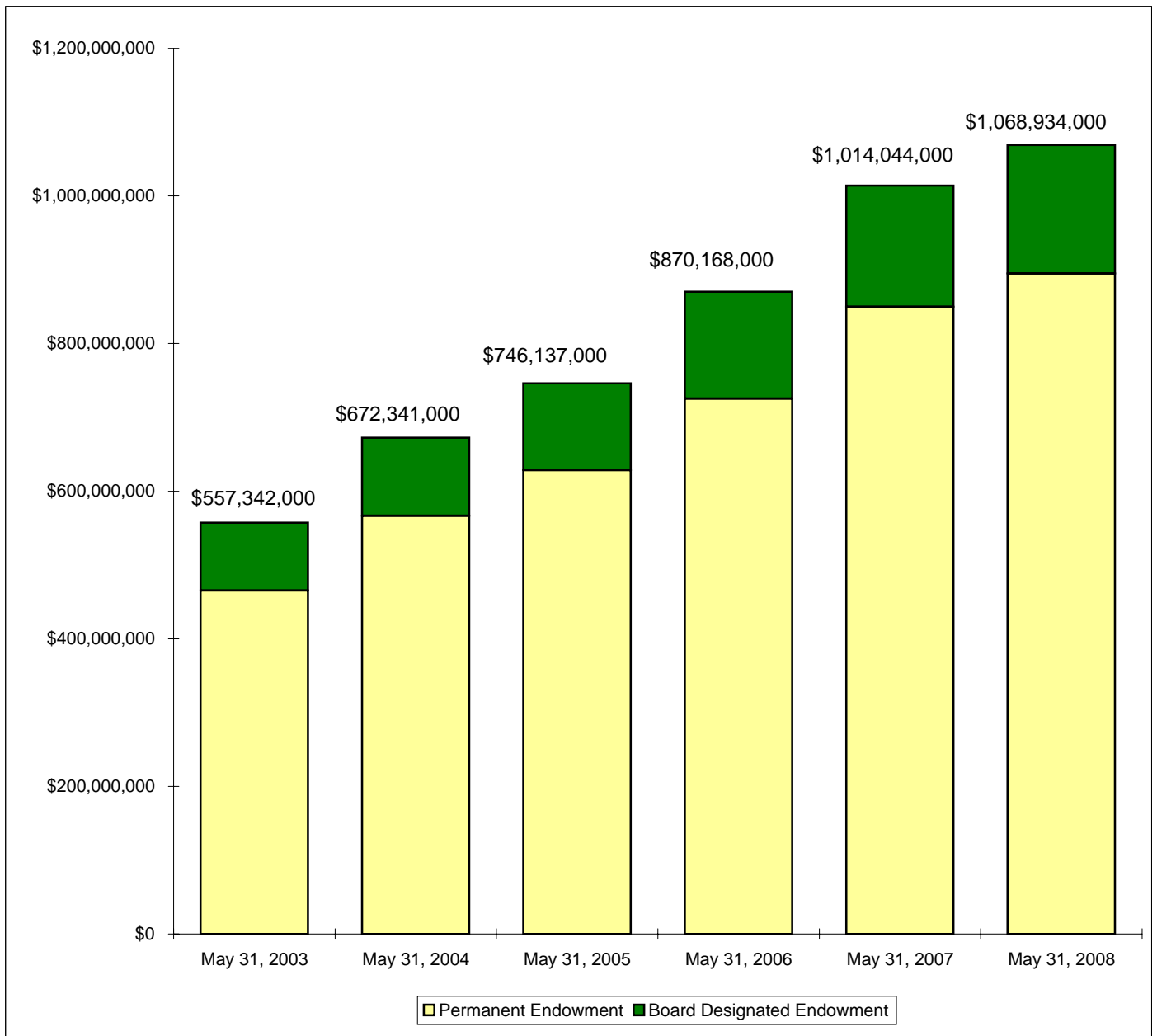
	2001-02	2002-03	2003-04	2004-05	2005-06	2006-07	2007-08
Instruction	\$92,355,519	\$102,617,463	\$109,586,442	\$113,783,712	\$114,841,749	\$128,567,485	\$137,754,552
Acad Support/Research/PS	23,117,511	24,666,809	24,957,815	25,637,473	26,511,262	28,969,003	31,131,699
Student Services	12,849,698	14,779,593	15,177,946	19,276,167	19,926,881	20,460,020	22,164,653
Plant Operation/Maintenance	19,608,685	22,537,742	33,373,695	36,228,820	39,746,168	50,405,094	45,148,794
Institutional Support	35,095,190	37,986,315	37,244,481	37,977,656	42,191,169	41,187,651	44,922,007
Scholarships & Fellowships	27,598,589	37,529,834	47,065,860	58,837,752	72,429,465	78,291,693	92,184,669
Auxiliary Enterprises	45,428,872	46,541,207	43,784,647	45,499,135	51,076,247	53,951,060	64,035,102
Discretionary Transfers	2,497,935	(2,560,253)	(2,018,647)	4,469,901	15,206,432	13,692,811	14,314,060
Total Exp. & Transfers	258,551,999	284,098,710	309,172,239	341,710,616	381,929,373	415,524,817	451,655,536
Excess Revenues	\$12,282	\$16,052	\$18,279	\$8,463	\$11,265	\$46,769	\$37,676

Percentage of Total Expenditures & Transfers

	2001-02	2002-03	2003-04	2004-05	2005-06	2006-07	2007-08
Instruction	35.7%	36.1%	35.4%	33.3%	30.1%	30.9%	30.5%
Gifts/Private Grants	8.9%	8.7%	8.1%	7.5%	6.9%	7.0%	6.9%
Student Services	5.0%	5.2%	4.9%	5.6%	5.2%	4.9%	4.9%
Plant Operation/Maintenance	7.6%	7.9%	10.8%	10.6%	10.4%	12.1%	10.0%
Institutional Support	13.6%	13.4%	12.0%	11.1%	11.0%	9.9%	9.9%
Scholarships & Fellowships	10.7%	13.2%	15.2%	17.2%	19.0%	18.8%	20.4%
Auxiliary Enterprises	17.6%	16.4%	14.2%	13.3%	13.4%	13.0%	14.2%
Discretionary Transfers	1.0%	-0.9%	-0.7%	1.3%	4.0%	3.3%	3.2%
Total Exp. & Transfers	100.0%	100.0%	100.0%	100.0%	100.0%	100.0%	100.0%

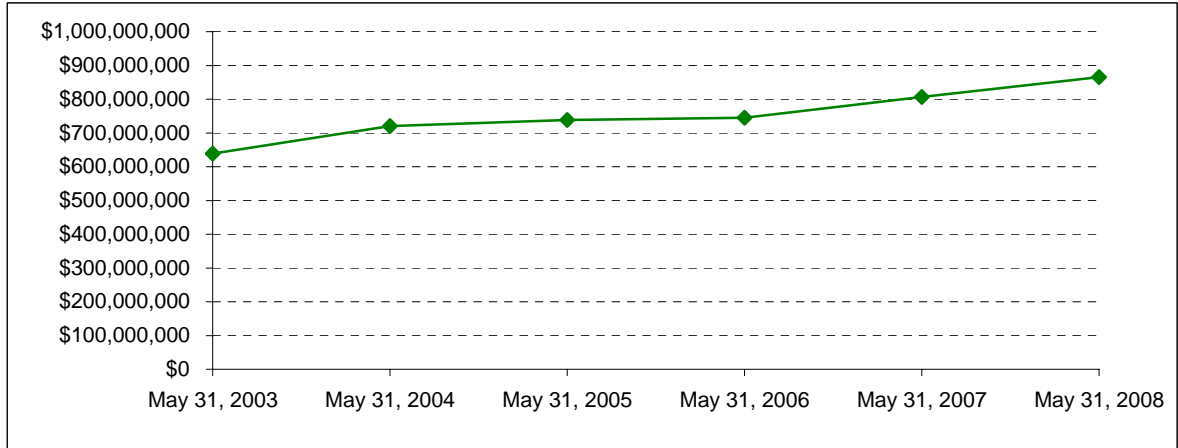
**Endowment Fund Balance - Market Value
May 31, 2003 through May 31, 2008**

	May 31, 2003	May 31, 2004	May 31, 2005	May 31, 2006	May 31, 2007	May 31, 2008
Permanent Endowment	\$465,189,000	\$566,655,000	\$628,503,000	\$725,266,000	\$849,855,000	\$894,844,000
Board Designated Endowment	92,153,000	105,686,000	117,634,000	144,902,000	164,189,000	174,090,000
Total Endowment	\$557,342,000	\$672,341,000	\$746,137,000	\$870,168,000	\$1,014,044,000	\$1,068,934,000
Permanent Endowment	83.5%	84.3%	84.2%	83.3%	83.8%	83.7%
Board Designated Endowment	16.5%	15.7%	15.8%	16.7%	16.2%	16.3%
Total Endowment	100.0%	100.0%	100.0%	100.0%	100.0%	100.0%



Property, Plant and Equipment*
May 31, 2003 through May 31, 2008

Property, Plant & Equipment	May 31, 2003	May 31, 2004	May 31, 2005	May 31, 2006	May 31, 2007	May 31, 2008
	\$638,914,000	\$720,816,000	\$738,186,000	\$745,063,000	\$806,781,000	\$865,139,000



*Does not reflect the impact of accumulated depreciation.

*The May 31, 2006 figure for Property, Plant & Equipment was changed in 2007 from \$744,986,000 to \$745,063,000.

Assets
May 31, 2003 through May 31, 2008

	May 31, 2003	May 31, 2004	May 31, 2005	May 31, 2006	May 31, 2007	May 31, 2008
Net Assets	\$850,735,000	\$989,916,000	\$1,059,904,000	\$1,230,176,000	\$1,408,848,000	\$1,439,335,000
Total Assets	\$1,230,551,000	\$1,363,089,000	\$1,426,295,000	\$1,638,403,000	\$1,831,511,000	\$1,863,687,000

