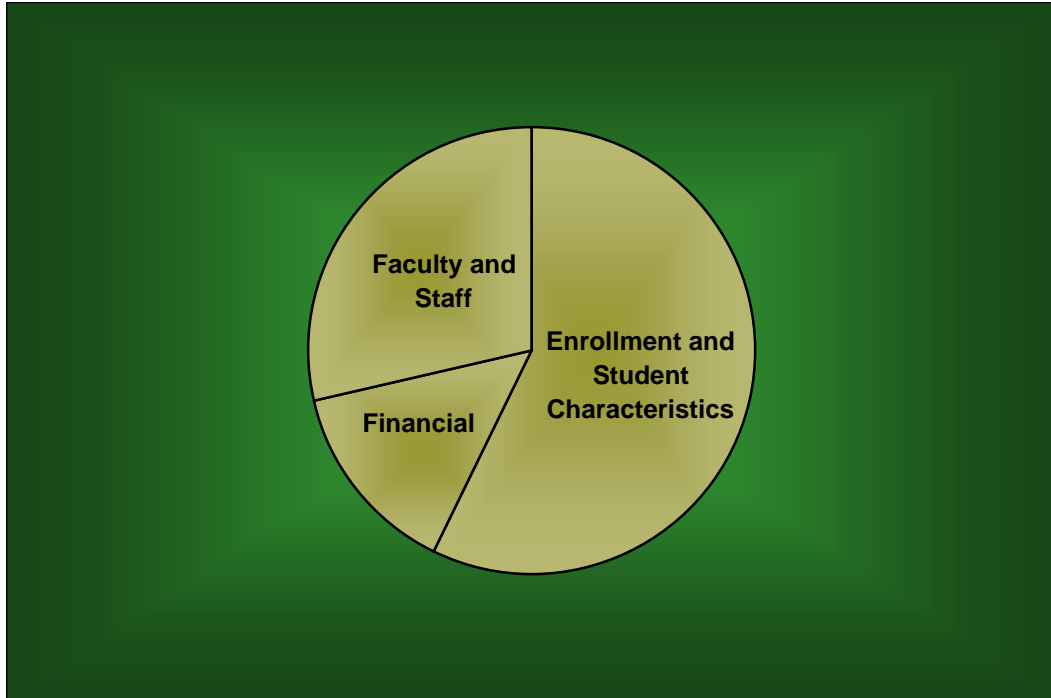


# **BAYLOR TRENDS**

---



**Fall 2001 - Fall 2007**

---

**Volume XIX**

---

Prepared by the Office of Institutional Research and Testing, Fall 2007

<http://www.baylor.edu/irt/>

---

# Table of Contents

---

|   | Page |
|---|------|
| <b>ENROLLMENT AND STUDENT CHARACTERISTICS</b>   |      |
| <i>New Freshman Applications and Enrollment</i> .....   | 1    |
| <i>Transfer Applications and Enrollment</i> .....   | 1    |
| <i>New Freshman Applications and Enrollment by Gender</i> .....                                 | 2    |
| <i>New Freshman and Transfer Student Enrollment</i> .....                                       | 3    |
| <i>Enrollment by Classification</i> .....   | 4    |
| <i>Enrollment</i> .....   | 5    |
| <i>Enrollment by Gender, Waco Campus</i> .....  | 6    |
| <i>Enrollment by Religious Affiliation, Waco Campus</i> .....                                   | 7    |
| <i>Baptist Percentage, Waco Campus</i> .....  | 7    |
| <i>Enrollment by Racial/Ethnic Group</i> .....  | 8    |
| <i>Racial/Ethnic Minority Percentage</i> .....  | 8    |
| <i>Leading Texas Counties of Origin</i> .....   | 9    |
| <i>Leading States of Origin</i> .....   | 9    |
| <i>Percentage from Top Four Texas Counties</i> .....  | 10   |
| <i>Students from Texas by Three-Digit Zip Code Area</i> .....                                   | 10   |
| <i>Texas Enrollment by County</i> .....   | 11   |
| <i>Enrollment by State</i> .....  | 12   |
| <i>Countries Represented by Nonresident Aliens</i> .....  | 13   |
| <i>Enrollment by Unit</i> .....   | 14   |
| <i>Enrollment Percentage by Unit</i> .....  | 15   |
| <i>Student Credit Hours by Unit, Waco Campus</i> .....  | 16   |
| <i>Retention of First-Time Freshman Classes</i> .....   | 17   |
| <i>Distribution of Degrees</i> .....  | 18   |
| <i>Summary of Degrees Awarded</i> .....   | 19   |
| <i>Degree Programs</i> .....  | 20   |
| <br><b>FACULTY AND STAFF</b>  |      |
| <i>Full-Time Faculty Positions</i> .....  | 22   |
| <i>Highest Degree Earned by Full-Time Faculty</i> .....   | 22   |
| <i>Percentage of Full-Time Faculty with Tenure</i> .....  | 23   |
| <i>Average Salaries of Full-Time Instructional Faculty on Academic Year Contracts</i> .....     | 24   |
| <i>Average Compensation of Full-Time Instructional Faculty on Academic Year Contracts</i> ..... | 25   |
| <i>Institutional Staff</i> .....  | 26   |
| <i>Percentage of Institutional Staff</i> .....  | 26   |
| <i>Full-Time Faculty by Religious Affiliation</i> .....   | 27   |
| <i>Full-Time Staff by Religious Affiliation</i> .....   | 27   |

**FINANCIAL**

*Undergraduate Tuition and Other Semester Charges* ..... 28

*Undergraduate Tuition, Room and Board Charges*..... 29

*Annual Undergraduate Student Cost Profile*..... 30

*Operating Funds:*

*Sources of Revenues*..... 31

*Sources of Revenue as a Percentage of Total Revenues*..... 31

*Expenditures by Functions*..... 32

*Expenditures by Functions as a Percentage of Total Expenditures* ..... 32

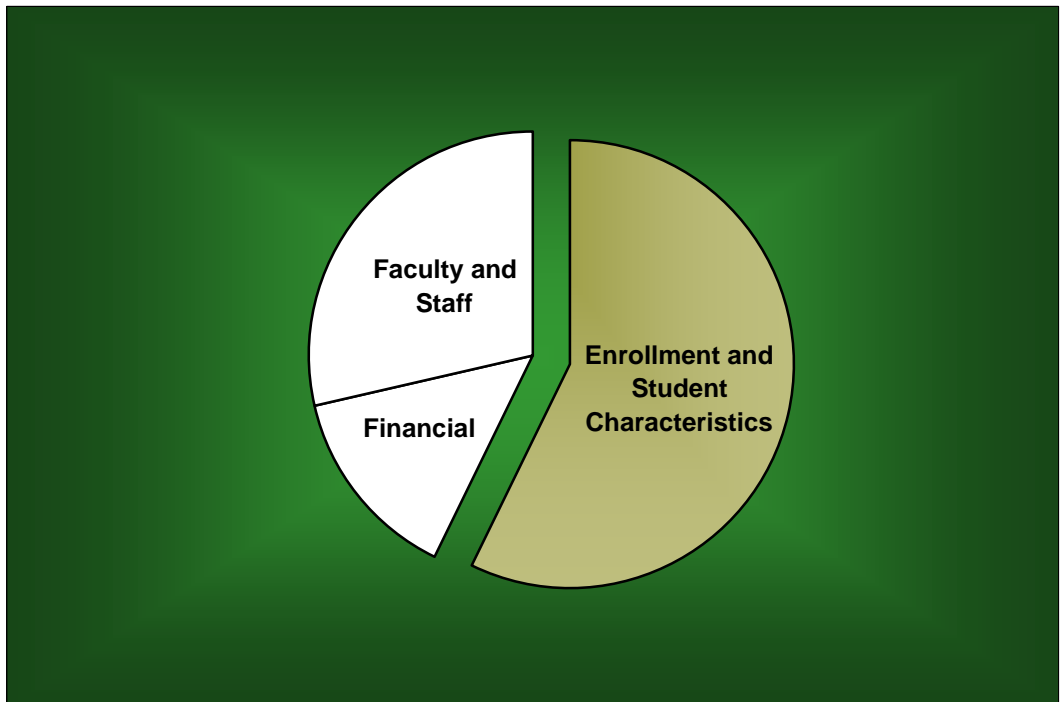
*Endowment Fund Balance - Market Value*..... 33

*Property, Plant and Equipment* ..... 34

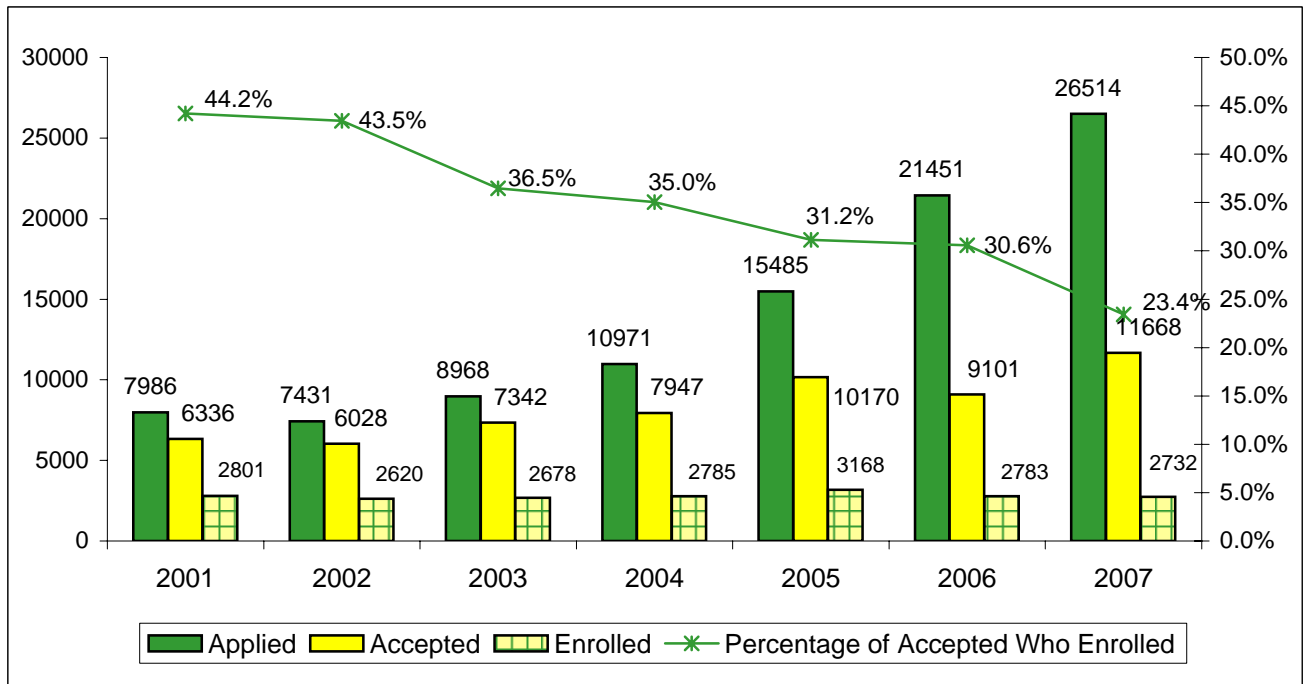
*Assets* ..... 34

## ***Enrollment and Student Characteristics***

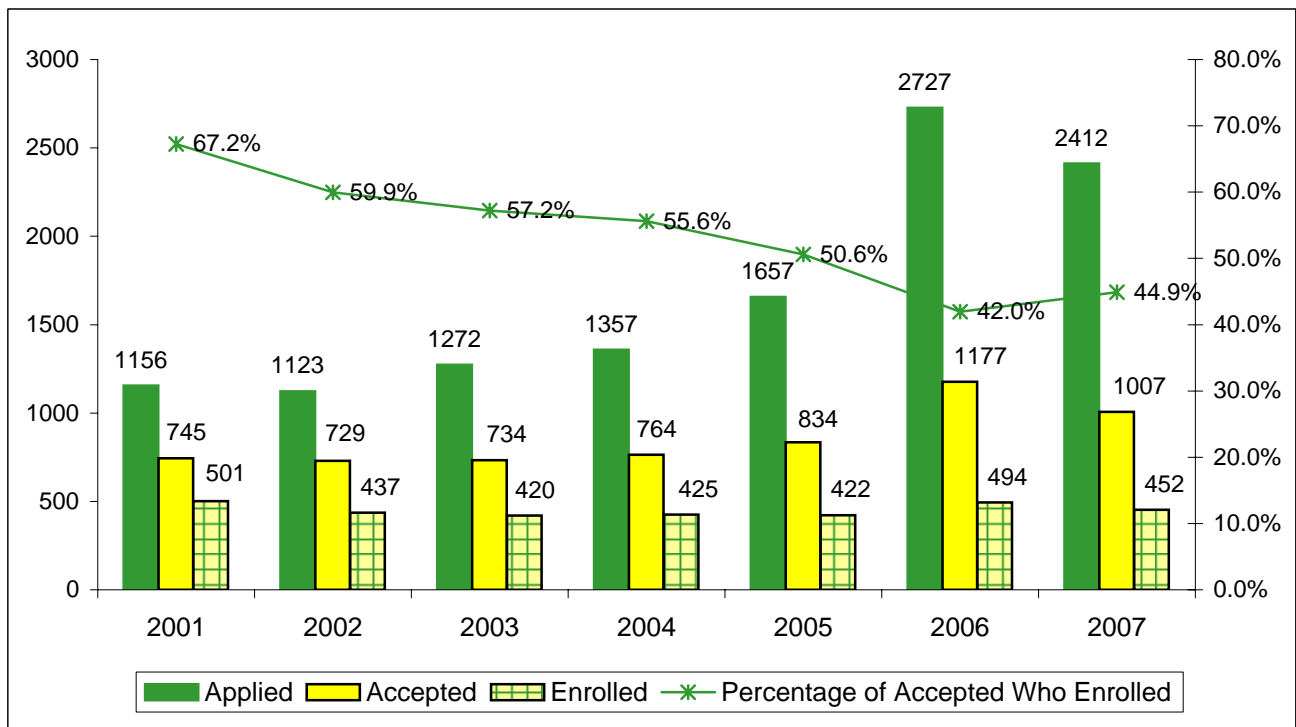
---



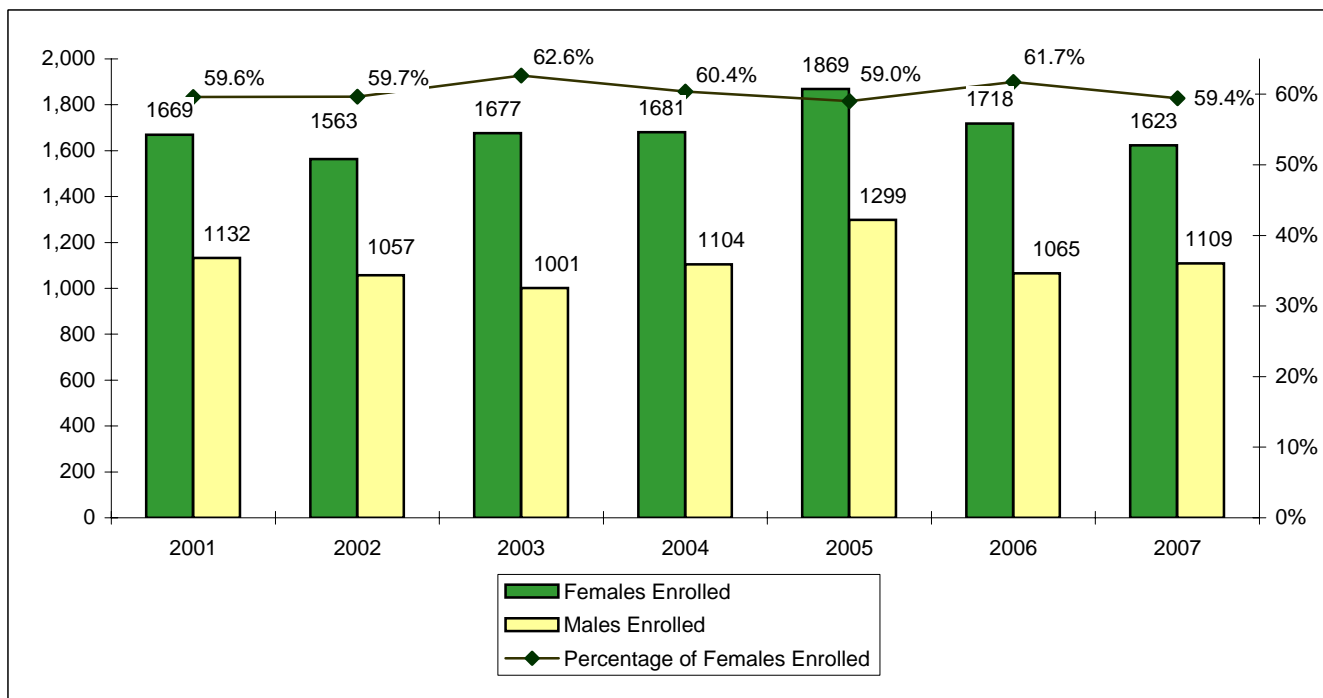
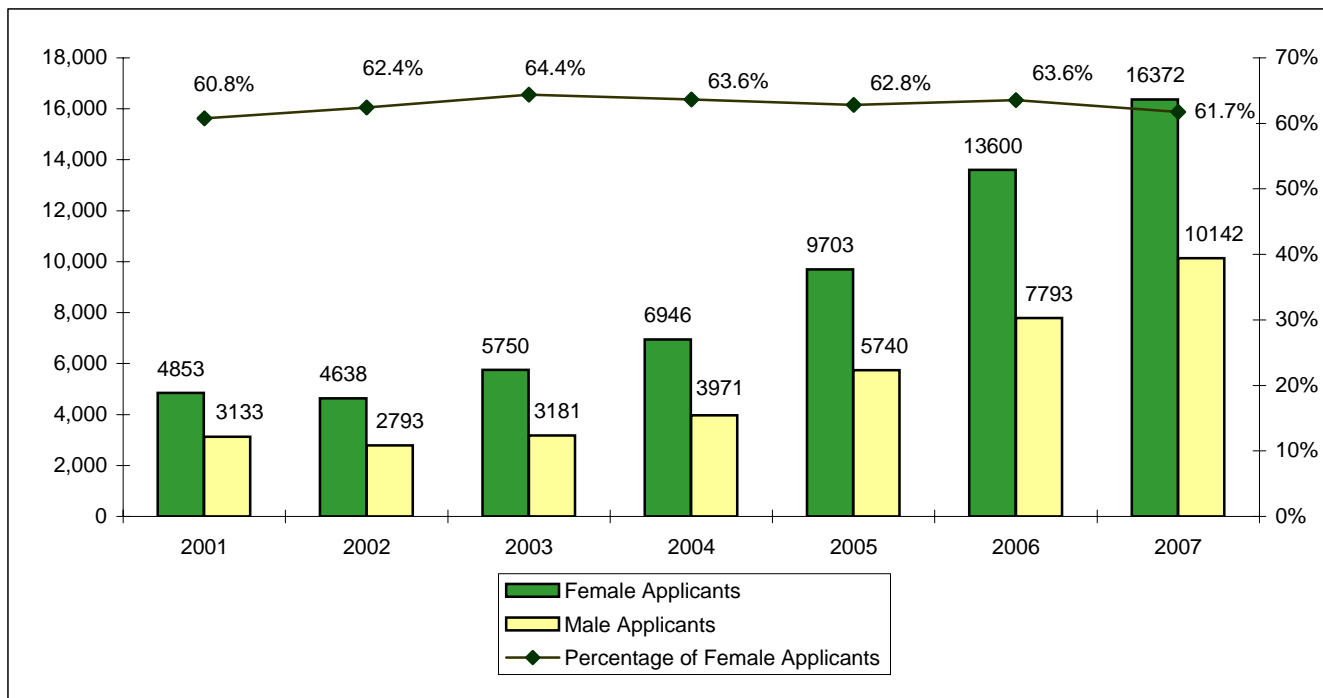
**New Freshman Applications, Acceptances and Enrollment  
Fall 2001 - Fall 2007**



**Transfer Applications, Acceptances and Enrollment  
Fall 2001 - Fall 2007**

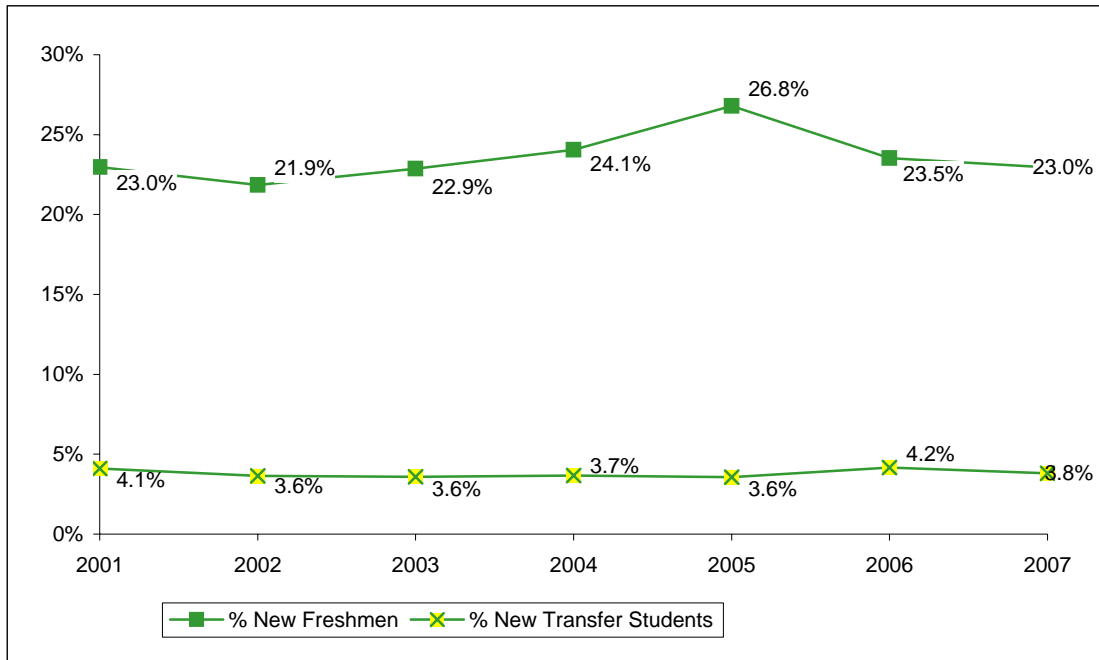


**New Freshman Applications and Enrollment by Gender\***  
**Fall 2001 - Fall 2007**



\*Totals of male and female applicants may not equal the total applicants displayed on the previous page, because

**New Freshman and Transfer Student Enrollment  
Fall 2001 - Fall 2007**



|                                 | Fall | 2001   | 2002   | 2003   | 2004   | 2005   | 2006   | 2007   |
|---------------------------------|------|--------|--------|--------|--------|--------|--------|--------|
| <b>New Freshmen</b>             |      | 2,801  | 2,620  | 2,678  | 2,785  | 3,168  | 2,783  | 2,732  |
| <b>New Transfer Students</b>    |      | 501    | 437    | 420    | 425    | 422    | 494    | 452    |
| <b>Undergraduate Enrollment</b> |      | 12,190 | 11,987 | 11,712 | 11,580 | 11,825 | 11,831 | 11,902 |
|                                 |      |        |        |        |        |        |        |        |
| <b>% New Freshmen</b>           |      | 23.0%  | 21.9%  | 22.9%  | 24.1%  | 26.8%  | 23.5%  | 23.0%  |
| <b>% New Transfer Students</b>  |      | 4.1%   | 3.6%   | 3.6%   | 3.7%   | 3.6%   | 4.2%   | 3.8%   |

Notes:

1. Freshmen who enter the University in the fall or preceding summer term are counted as "new freshmen." Similarly, transfer students entering in the fall or preceding summer term are counted as "transfer students" for the fall semester.

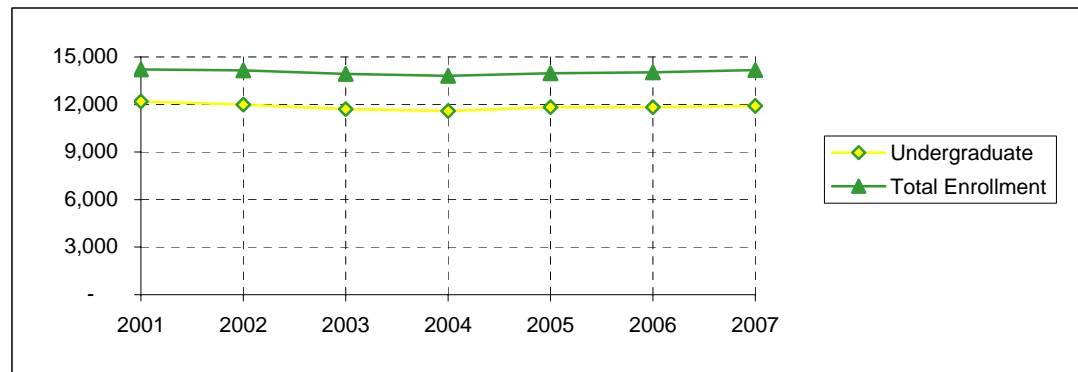
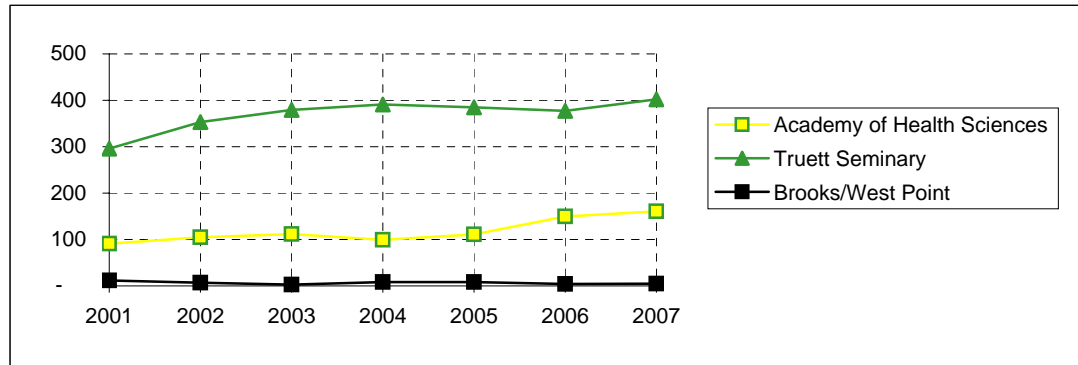
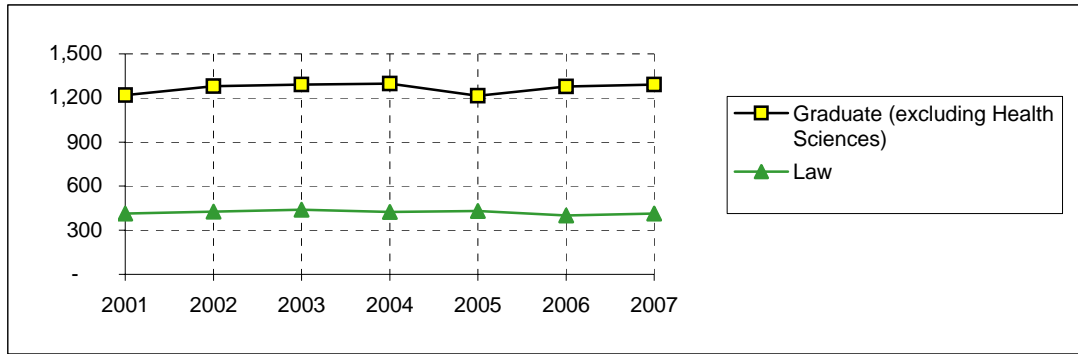
2. "Transfer students" refers to the entering summer/fall group of transfer students. For example, in Fall 2003 the 420 entering transfer students comprised 3.6% of the 11,712 undergraduates. However, for Fall 2003 the total number of enrolled undergraduates who had transferred into the University consisted of (a) transfers who entered in Fall 2003 and (b) students who transferred into the University in previous academic years. Generally, the total enrollment of students who had entered as transfer students is approximately 15% of the undergraduate student body.

**Enrollment by Classification  
Fall 2001 - Fall 2007**

|                                     | <b>Fall</b> | <b>2001</b> | <b>2002</b> | <b>2003</b> | <b>2004</b> | <b>2005</b> | <b>2006</b> | <b>2007</b> |
|-------------------------------------|-------------|-------------|-------------|-------------|-------------|-------------|-------------|-------------|
| <b>Freshman</b>                     |             | 3,613       | 3,309       | 3,382       | 3,430       | 3,791       | 3,524       | 3,315       |
| <b>Sophomore</b>                    |             | 2,686       | 2,679       | 2,506       | 2,391       | 2,529       | 2,833       | 2,683       |
| <b>Junior</b>                       |             | 2,565       | 2,595       | 2,462       | 2,425       | 2,295       | 2,481       | 2,652       |
| <b>Senior</b>                       |             | 3,194       | 3,297       | 3,262       | 3,223       | 3,080       | 2,896       | 3,159       |
| <b>Special</b>                      |             | 23          | 22          | -           | -           | -           | -           | -           |
| <b>Postbaccalaureate</b>            |             | 109         | 85          | 43          | 79          | 84          | 69          | 61          |
| <b>Nondegree</b>                    |             | -           | -           | 57          | 32          | 46          | 28          | 32          |
| <b>TOTAL UNDERGRADUATE</b>          |             | 12,190      | 11,987      | 11,712      | 11,580      | 11,825      | 11,831      | 11,902      |
| <b>Master's</b>                     |             | 802         | 843         | 845         | 834         | 720         | 778         | 783         |
| <b>Doctoral</b>                     |             | 397         | 416         | 427         | 445         | 473         | 473         | 483         |
| <b>Graduate Transient/Nondegree</b> |             | 11          | 10          | 10          | 7           | 10          | 9           | 9           |
| <b>Graduate Professional</b>        |             | 9           | 12          | 9           | 11          | 11          | 18          | 16          |
| <b>TOTAL "WACO" GRADUATE</b>        |             | 1,219       | 1,281       | 1,291       | 1,297       | 1,214       | 1,278       | 1,291       |
| <b>Seminary Master's</b>            |             | 260         | 318         | 337         | 345         | 344         | 334         | 365         |
| <b>Seminary Doctoral</b>            |             | 34          | 35          | 41          | 43          | 39          | 42          | 36          |
|                                     |             | 2           | -           | 1           | 3           | 2           | 1           | 1           |
|                                     |             | 296         | 353         | 379         | 391         | 385         | 377         | 402         |
| <b>School of Law</b>                |             | 413         | 426         | 440         | 424         | 432         | 400         | 413         |
| <b>Academy of Health Sciences</b>   |             | 91          | 105         | 112         | 99          | 111         | 150         | 161         |
| <b>Brooks/West Point</b>            |             | 12          | 7           | 3           | 8           | 8           | 4           | 5           |
| <b>TOTAL ENROLLMENT</b>             |             | 14,221      | 14,159      | 13,937      | 13,799      | 13,975      | 14,040      | 14,174      |

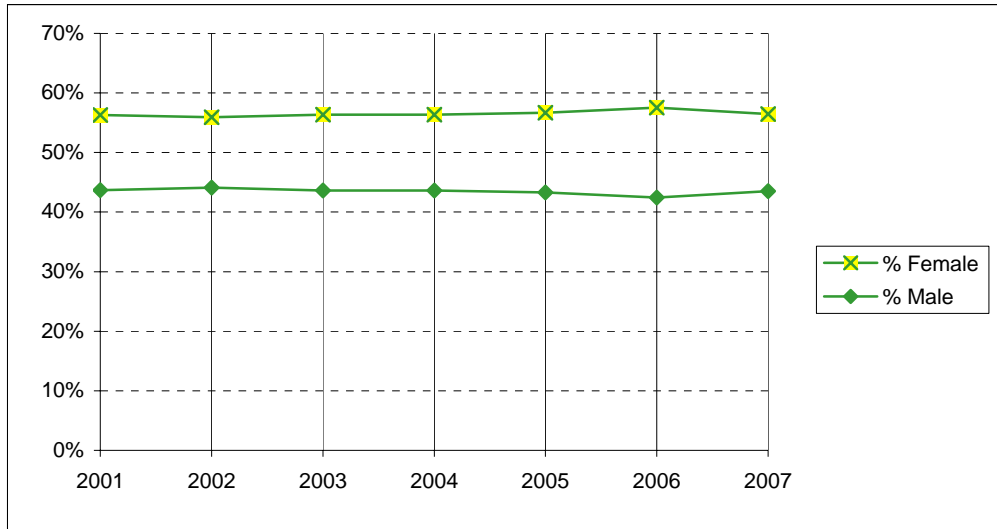


**Enrollment  
Fall 2001 - Fall 2007**



| Fall  | 2001   | 2002   | 2003   | 2004   | 2005   | 2006   | 2007   |
|---|--------|--------|--------|--------|--------|--------|--------|
| <b>Undergraduate</b>                        | 12,190 | 11,987 | 11,712 | 11,580 | 11,825 | 11,831 | 11,902 |
| <b>Graduate (excluding Health Sciences)</b> | 1,219  | 1,281  | 1,291  | 1,297  | 1,214  | 1,278  | 1,291  |
| <b>Law</b>                                  | 413    | 426    | 440    | 424    | 432    | 400    | 413    |
| <b>Truett Seminary</b>                      | 296    | 353    | 379    | 391    | 385    | 377    | 402    |
| <b>SUBTOTAL</b>                             | 14,118 | 14,047 | 13,822 | 13,692 | 13,856 | 13,886 | 14,008 |
| <b>Academy of Health Sciences</b>           | 91     | 105    | 112    | 99     | 111    | 150    | 161    |
| <b>Brooks/West Point</b>                    | 12     | 7      | 3      | 8      | 8      | 4      | 5      |
| <b>TOTAL ENROLLMENT</b>                     | 14,221 | 14,159 | 13,937 | 13,799 | 13,975 | 14,040 | 14,174 |

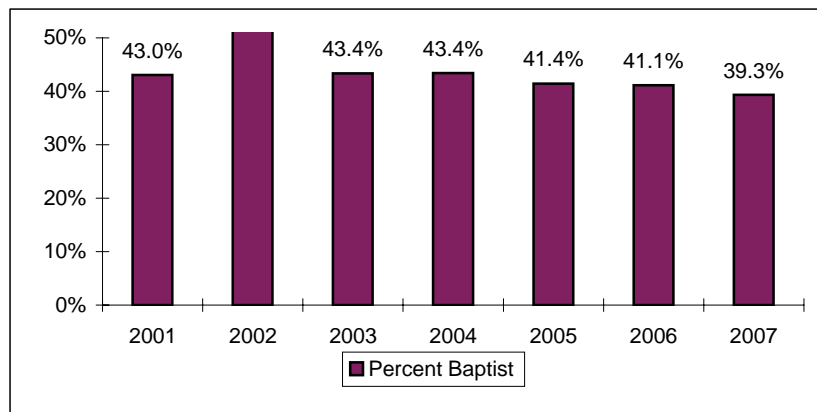
**Enrollment by Gender  
(Excluding Health Sciences)  
Fall 2001 - Fall 2007**



|  | Fall | 2001   | 2002   | 2003   | 2004   | 2005   | 2006   | 2007   |
|--|------|--------|--------|--------|--------|--------|--------|--------|
| <b>Female</b>                            |      | 7,950  | 7,854  | 7,790  | 7,717  | 7,854  | 7,990  | 7,912  |
| <b>Male</b>                              |      | 6,168  | 6,193  | 6,032  | 5,975  | 6,002  | 5,896  | 6,096  |
| <b>Total (excluding Health Sciences)</b> |      | 14,118 | 14,047 | 13,822 | 13,692 | 13,856 | 13,886 | 14,008 |
|  |      |        |        |        |        |        |        |        |
| <b>% Female</b>                          |      | 56.3%  | 55.9%  | 56.4%  | 56.4%  | 56.7%  | 57.5%  | 56.5%  |
| <b>% Male</b>                            |      | 43.7%  | 44.1%  | 43.6%  | 43.6%  | 43.3%  | 42.5%  | 43.5%  |

**Enrollment by Religious Affiliation (Excluding Health Sciences)  
Fall 2001 - Fall 2007**

| Fall                            | 2001         | 2002         | 2003         | 2004         | 2005         | 2006         | 2007         |
|---------------------------------|--------------|--------------|--------------|--------------|--------------|--------------|--------------|
| African Methodist Episcopal     | -            | -            | 1            | 4            | 7            | 5            | 5            |
| Anglican - Church of England    | -            | -            | -            | 7            | 11           | 9            | 7            |
| Assembly of God                 | 135          | 124          | 125          | 136          | 130          | 129          | 131          |
| Atheist                         | -            | -            | -            | 14           | 16           | 22           | 20           |
| Baptist                         | 6076         | 6076         | 5994         | 5941         | 5738         | 5710         | 5511         |
| Buddhist                        | 77           | 71           | 60           | 77           | 76           | 79           | 76           |
| Catholic                        | 1694         | 1659         | 1591         | 1765         | 1833         | 1788         | 1805         |
| Christian Church                | -            | -            | 16           | 59           | 84           | 86           | 123          |
| Christian Scientist             | 10           | 13           | 12           | 16           | 15           | 15           | 9            |
| Church of Christ                | 279          | 283          | 253          | 269          | 257          | 259          | 253          |
| Church of God                   | 25           | 21           | 29           | 29           | 27           | 29           | 31           |
| Church of the Nazarene          | 28           | 25           | 33           | 37           | 28           | 34           | 35           |
| Congregational Church           | 23           | 23           | 21           | 19           | 17           | 14           | 10           |
| Disciples of Christ (Christian) | 73           | 70           | 76           | 80           | 86           | 91           | 101          |
| Dutch Reformed                  | -            | -            | -            | -            | 2            | 4            | 4            |
| Eastern Orthodox                | 31           | 32           | 35           | 32           | 35           | 37           | 43           |
| Episcopalian                    | 307          | 294          | 249          | 251          | 256          | 262          | 253          |
| Evangelical Free Church         | -            | -            | 3            | 12           | 25           | 36           | 43           |
| Four Square Gospel              | 9            | 10           | 11           | 11           | 12           | 10           | 15           |
| Full Gospel                     | -            | -            | -            | 2            | 4            | 3            | 3            |
| Greek Orthodox                  | -            | -            | 4            | 6            | 7            | 5            | 6            |
| Hindu                           | 88           | 85           | 89           | 105          | 115          | 103          | 101          |
| Independent Bible Church        | -            | -            | 1            | 12           | 19           | 21           | 24           |
| Interdenominational             | 460          | 477          | 380          | 266          | 167          | 98           | 79           |
| Jehovah's Witness               | 11           | 10           | 12           | 10           | 11           | 8            | 9            |
| Jewish                          | -            | -            | -            | 9            | 11           | 11           | 10           |
| Judaism                         | 17           | 14           | 22           | 23           | 21           | 14           | 15           |
| Latter Day Saints (Mormon)      | 19           | 23           | 23           | 36           | 48           | 39           | 26           |
| Lutheran                        | 386          | 388          | 354          | 343          | 364          | 371          | 368          |
| Mennonite                       | 5            | 6            | 7            | 10           | 10           | 5            | 7            |
| Methodist                       | 1251         | 1280         | 1219         | 1133         | 1099         | 1074         | 1095         |
| Missionary Alliance             | -            | -            | 1            | 2            | 2            | 5            | 7            |
| Moslem (Islam, Muslim)          | 100          | 109          | 109          | 119          | 117          | 133          | 124          |
| Non-Denominational              | 251          | 270          | 567          | 1054         | 1444         | 1703         | 1911         |
| Pentecostal                     | 106          | 115          | 107          | 100          | 112          | 99           | 110          |
| Presbyterian                    | 571          | 534          | 536          | 549          | 549          | 569          | 571          |
| Protestant                      | -            | -            | 3            | 27           | 54           | 53           | 68           |
| Seventh Day Adventist           | -            | -            | 2            | 11           | 12           | 11           | 13           |
| Society of Friends (Quakers)    | 4            | 3            | 1            | 2            | 3            | 2            | 2            |
| Unitarian                       | 8            | 6            | 7            | 6            | 4            | 3            | 6            |
| United Brethren                 | 4            | 4            | 3            | -            | 2            | 2            | 1            |
| United Church of Christ         | -            | -            | -            | 2            | 6            | 5            | 3            |
| Other/Not Specified             | 2070         | 2022         | 1866         | 1106         | 1020         | 930          | 974          |
| <b>TOTAL RELIGION</b>           | <b>14118</b> | <b>14047</b> | <b>13822</b> | <b>13692</b> | <b>13856</b> | <b>13886</b> | <b>14008</b> |



**Enrollment by Racial / Ethnic Group\*  
Fall 2001 - Fall 2007**

A.

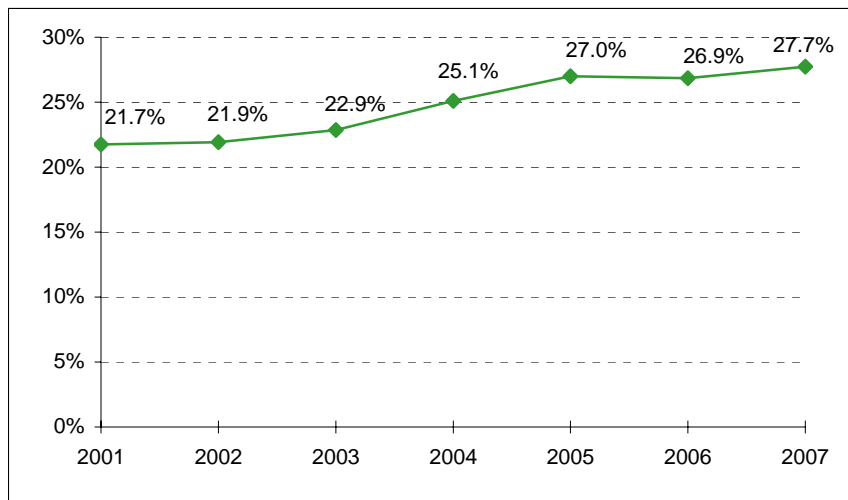
|                                       | Fall | 2001   | 2002   | 2003   | 2004   | 2005   | 2006   | 2007   |
|---------------------------------------|------|--------|--------|--------|--------|--------|--------|--------|
| <b>African American/Black</b>         |      | 774    | 771    | 862    | 944    | 1,048  | 1,036  | 1,046  |
| <b>American Indian/Alaskan Native</b> |      | 63     | 75     | 83     | 80     | 93     | 88     | 90     |
| <b>Asian/Pacific Islander</b>         |      | 903    | 883    | 865    | 977    | 1,044  | 1,050  | 1,127  |
| <b>Hispanic</b>                       |      | 1,051  | 1,078  | 1,077  | 1,133  | 1,284  | 1,301  | 1,375  |
| <b>White</b>                          |      | 11,033 | 10,919 | 10,541 | 10,318 | 10,183 | 10,249 | 10,221 |
| <b>Other</b>                          |      | 301    | 296    | 300    | 330    | 304    | 295    | 293    |
| <b>Not Specified</b>                  |      | 96     | 137    | 209    | 17     | 19     | 21     | 22     |
| <b>Total</b>                          |      | 14,221 | 14,159 | 13,937 | 13,799 | 13,975 | 14,040 | 14,174 |

B.

|                                       | Fall | 2001   | 2002   | 2003   | 2004   | 2005   | 2006   | 2007   |
|---------------------------------------|------|--------|--------|--------|--------|--------|--------|--------|
| <b>African American/Black</b>         |      | 753    | 744    | 835    | 908    | 1,001  | 990    | 995    |
| <b>American Indian/Alaskan Native</b> |      | 63     | 75     | 82     | 79     | 92     | 88     | 90     |
| <b>Asian/Pacific Islander</b>         |      | 669    | 660    | 666    | 770    | 846    | 857    | 907    |
| <b>Hispanic</b>                       |      | 1,017  | 1,045  | 1,040  | 1,094  | 1,237  | 1,256  | 1,330  |
| <b>White</b>                          |      | 10,967 | 10,854 | 10,476 | 10,248 | 10,128 | 10,183 | 10,151 |
| <b>Other</b>                          |      | 258    | 250    | 256    | 286    | 264    | 257    | 245    |
| <b>Not Specified</b>                  |      | 91     | 125    | 184    | 17     | 19     | 20     | 22     |
| <b>NONRESIDENT ALIEN</b>              |      | 403    | 406    | 398    | 397    | 388    | 389    | 434    |
| <b>Total</b>                          |      | 14,221 | 14,159 | 13,937 | 13,799 | 13,975 | 14,040 | 14,174 |

\*In Table B, nonresident aliens are partitioned as a group.

**Racial / Ethnic Minority Percentage  
Fall 2001 - Fall 2007  
(From Table A)**



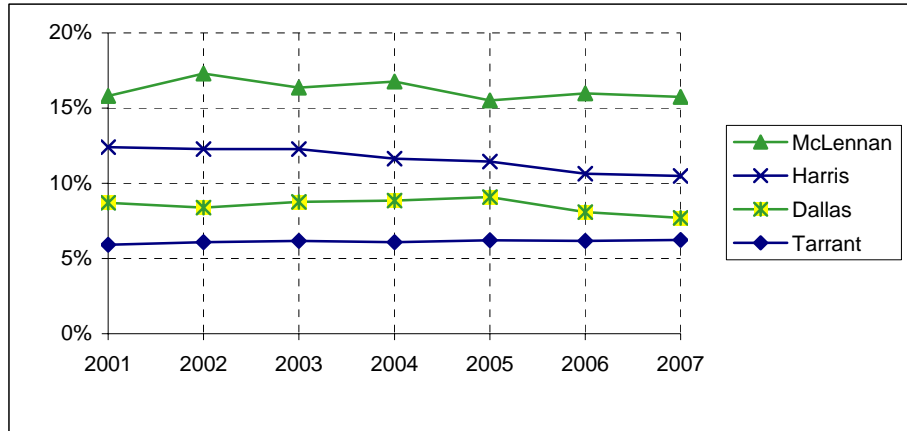
**Leading Texas Counties of Origin  
Fall 2001 - Fall 2007**

| Fall       | 2001  | 2002  | 2003  | 2004  | 2005  | 2006  | 2007  |
|------------|-------|-------|-------|-------|-------|-------|-------|
| McLennan   | 2,248 | 2,448 | 2,279 | 2,315 | 2,169 | 2,242 | 2,232 |
| Harris     | 1,763 | 1,738 | 1,711 | 1,605 | 1,599 | 1,494 | 1,486 |
| Dallas     | 1,238 | 1,188 | 1,221 | 1,222 | 1,271 | 1,134 | 1,093 |
| Tarrant    | 840   | 863   | 860   | 840   | 868   | 867   | 884   |
| Collin     | 505   | 490   | 459   | 457   | 481   | 582   | 601   |
| Bexar      | 521   | 475   | 438   | 464   | 486   | 507   | 507   |
| Travis     | 326   | 331   | 372   | 385   | 405   | 410   | 404   |
| Fort Bend  | 331   | 332   | 315   | 318   | 332   | 358   | 379   |
| Denton     | 136   | 160   | 171   | 180   | 196   | 270   | 298   |
| Montgomery | 273   | 266   | 269   | 263   | 298   | 283   | 290   |
| Williamson | 138   | 154   | 171   | 197   | 201   | 220   | 221   |
| Bell       | 237   | 204   | 204   | 199   | 215   | 210   | 194   |
| Smith      | 149   | 147   | 138   | 146   | 151   | 150   | 122   |
| El Paso    | 97    | 93    | 85    | 95    | 100   | 109   | 120   |
| Brazoria   | 117   | 115   | 115   | 99    | 97    | 100   | 105   |
| Galveston  | 117   | 119   | 102   | 109   | 108   | 109   | 105   |
| Hidalgo    | 79    | 85    | 83    | 90    | 96    | 88    | 99    |
| Gregg      | 144   | 135   | 145   | 111   | 106   | 97    | 94    |
| Ellis      | 58    | 75    | 57    | 61    | 68    | 69    | 90    |
| Rockwall   | 48    | 41    | 72    | 74    | 84    | 69    | 76    |
| Nueces     | 98    | 88    | 83    | 71    | 89    | 71    | 74    |
| Jefferson  | 83    | 78    | 71    | 87    | 88    | 81    | 70    |
| Johnson    | 89    | 75    | 74    | 65    | 68    | 64    | 69    |

**Leading States of Origin  
Fall 2001 - Fall 2007**

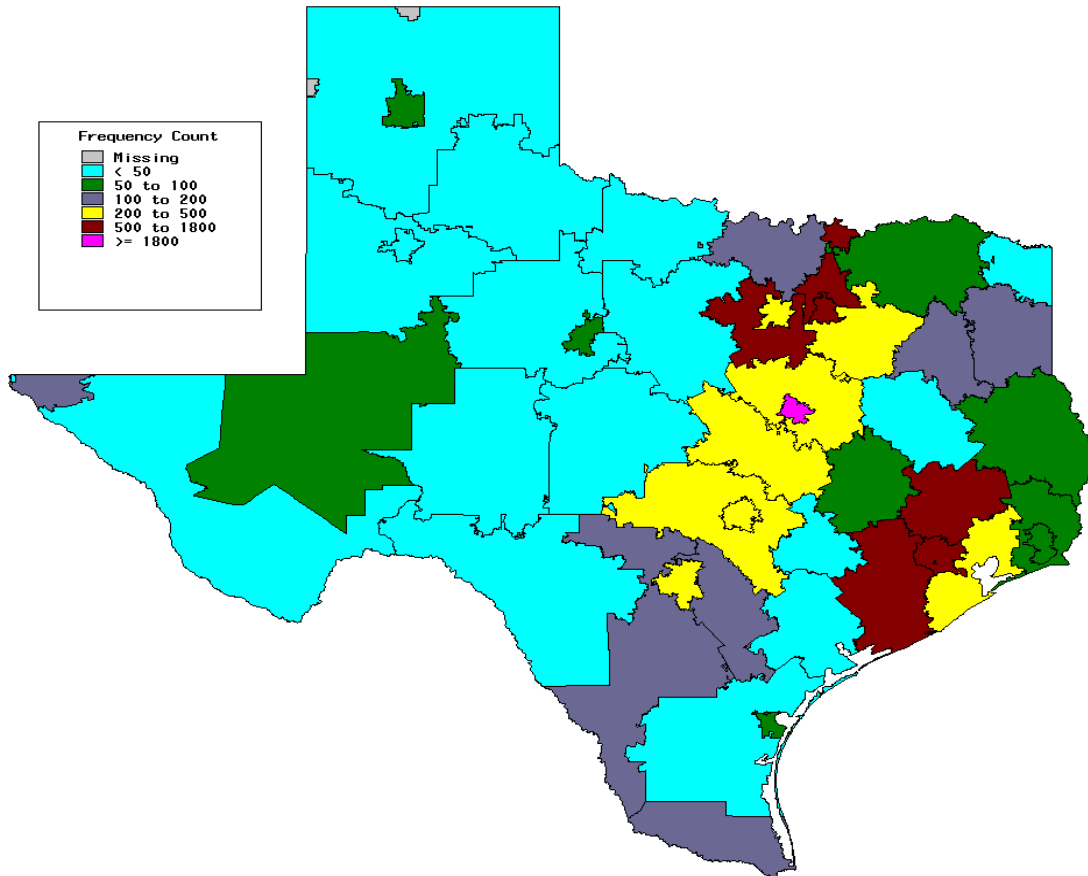
| Fall       | 2001   | 2002   | 2003   | 2004   | 2005   | 2006   | 2007   |
|------------|--------|--------|--------|--------|--------|--------|--------|
| Texas      | 11,553 | 11,613 | 11,316 | 11,233 | 11,349 | 11,316 | 11,355 |
| California | 246    | 227    | 238    | 255    | 252    | 269    | 268    |
| Colorado   | 138    | 137    | 129    | 132    | 145    | 143    | 179    |
| Louisiana  | 163    | 156    | 145    | 136    | 145    | 152    | 176    |
| Oklahoma   | 221    | 204    | 186    | 184    | 177    | 170    | 175    |
| Illinois   | 88     | 87     | 103    | 97     | 105    | 117    | 125    |
| Missouri   | 111    | 110    | 121    | 101    | 100    | 97     | 105    |
| Arkansas   | 132    | 129    | 133    | 122    | 105    | 99     | 104    |
| Kansas     | 110    | 96     | 84     | 84     | 91     | 93     | 99     |
| Tennessee  | 74     | 72     | 67     | 65     | 66     | 80     | 88     |
| Florida    | 67     | 53     | 60     | 80     | 88     | 97     | 86     |
| Arizona    | 61     | 57     | 56     | 62     | 81     | 79     | 78     |
| New Mexico | 76     | 69     | 68     | 70     | 66     | 69     | 65     |

Percentage From Top Four Texas Counties  
Fall 2001 - Fall 2007



| Fall            | 2001  | 2002  | 2003  | 2004  | 2005  | 2006  | 2007  |
|-----------------|-------|-------|-------|-------|-------|-------|-------|
| <b>McLennan</b> | 15.8% | 17.3% | 16.4% | 16.8% | 15.5% | 16.0% | 15.7% |
| <b>Harris</b>   | 12.4% | 12.3% | 12.3% | 11.6% | 11.4% | 10.6% | 10.5% |
| <b>Dallas</b>   | 8.7%  | 8.4%  | 8.8%  | 8.9%  | 9.1%  | 8.1%  | 7.7%  |
| <b>Tarrant</b>  | 5.9%  | 6.1%  | 6.2%  | 6.1%  | 6.2%  | 6.2%  | 6.2%  |

Fall 2001 - Fall 2007



**Texas Enrollment by County  
Fall 2007**

|               | n   |            | n     |            | n  |               | n     |              | n      |
|---------------|-----|------------|-------|------------|----|---------------|-------|--------------|--------|
| Anderson      | 11  | Crane      | 2     | Hartley    | 2  | Madison       | 5     | San Patricio | 9      |
| Andrews       | 1   | Crockett   | 1     | Haskell    | 0  | Marion        | 3     | San Saba     | 2      |
| Angelina      | 19  | Crosby     | 0     | Hays       | 40 | Martin        | 0     | Schleicher   | 1      |
| Aransas       | 4   | Culberson  | 1     | Hemphill   | 0  | Mason         | 0     | Scurry       | 3      |
| Archer        | 3   | Dallam     | 0     | Henderson  | 23 | Matagorda     | 17    | Shackelford  | 0      |
| Armstrong     | 0   | Dallas     | 1,093 | Hidalgo    | 99 | Maverick      | 11    | Shelby       | 4      |
| Atascosa      | 3   | Dawson     | 1     | Hill       | 27 | Mc Culloch    | 1     | Sherman      | 0      |
| Austin        | 9   | De Witt    | 3     | Hockley    | 3  | Mc Lennan     | 2,232 | Smith        | 122    |
| Bailey        | 0   | Deaf Smith | 0     | Hood       | 25 | Mc Mullen     | 0     | Somervell    | 4      |
| Bandera       | 6   | Delta      | 0     | Hopkins    | 12 | Medina        | 14    | Starr        | 4      |
| Bastrop       | 9   | Denton     | 298   | Houston    | 6  | Menard        | 0     | Stephens     | 4      |
| Baylor        | 1   | Dickens    | 0     | Howard     | 2  | Midland       | 34    | Sterling     | 1      |
| Bee           | 2   | Dimmit     | 0     | Hudspeth   | 0  | Milam         | 7     | Stonewall    | 0      |
| Bell          | 194 | Donley     | 0     | Hunt       | 17 | Mills         | 1     | Sutton       | 0      |
| Bexar         | 507 | Duval      | 0     | Hutchinson | 2  | Mitchell      | 1     | Swisher      | 3      |
| Blanco        | 5   | Eastland   | 2     | Irion      | 0  | Montague      | 4     | Tarrant      | 884    |
| Borden        | 0   | Ector      | 22    | Jack       | 3  | Montgomery    | 290   | Taylor       | 54     |
| Bosque        | 19  | Edwards    | 0     | Jackson    | 3  | Moore         | 1     | Terrell      | 0      |
| Bowie         | 18  | El Paso    | 120   | Jasper     | 7  | Morris        | 4     | Terry        | 1      |
| Brazoria      | 105 | Ellis      | 90    | Jeff Davis | 0  | Motley        | 0     | Throckmorton | 0      |
| Brazos        | 47  | Erath      | 17    | Jefferson  | 70 | Nacogdoches   | 26    | Titus        | 12     |
| Brewster      | 0   | Falls      | 13    | Jim Hogg   | 0  | Navarro       | 18    | Tom Green    | 24     |
| Briscoe       | 1   | Fannin     | 4     | Jim Wells  | 7  | Newton        | 0     | Travis       | 404    |
| Brooks        | 1   | Fayette    | 7     | Johnson    | 69 | Nolan         | 3     | Trinity      | 2      |
| Brown         | 19  | Fisher     | 1     | Jones      | 2  | Nueces        | 74    | Tyler        | 1      |
| Burleson      | 4   | Floyd      | 2     | Karnes     | 3  | Ochiltree     | 4     | Upshur       | 9      |
| Burnet        | 16  | Foard      | 0     | Kaufman    | 40 | Oldham        | 0     | Upton        | 0      |
| Caldwell      | 3   | Fort Bend  | 379   | Kendall    | 41 | Orange        | 14    | Uvalde       | 5      |
| Calhoun       | 3   | Franklin   | 7     | Kenedy     | 1  | Palo Pinto    | 3     | Val Verde    | 4      |
| Callahan      | 2   | Freestone  | 18    | Kent       | 0  | Panola        | 3     | Van Zandt    | 7      |
| Cameron       | 57  | Frio       | 1     | Kerr       | 22 | Parker        | 40    | Victoria     | 30     |
| Camp          | 3   | Gaines     | 0     | Kimble     | 1  | Parmer        | 4     | Walker       | 11     |
| Carson        | 1   | Galveston  | 105   | King       | 0  | Pecos         | 3     | Waller       | 7      |
| Cass          | 11  | Garza      | 0     | Kinney     | 0  | Polk          | 4     | Ward         | 0      |
| Castro        | 1   | Gillespie  | 19    | Kleberg    | 3  | Potter        | 17    | Washington   | 12     |
| Chambers      | 7   | Glasscock  | 0     | Knox       | 0  | Presidio      | 0     | Webb         | 24     |
| Cherokee      | 8   | Goliad     | 1     | La Salle   | 0  | Rains         | 0     | Wharton      | 7      |
| Childress     | 2   | Gonzales   | 3     | Lamar      | 19 | Randall       | 47    | Wheeler      | 0      |
| Clay          | 0   | Gray       | 2     | Lamb       | 2  | Reagan        | 0     | Wichita      | 19     |
| Cochran       | 0   | Grayson    | 45    | Lampasas   | 3  | Real          | 0     | Wilbarger    | 5      |
| Coke          | 0   | Gregg      | 94    | Lavaca     | 9  | Red River     | 1     | Willacy      | 0      |
| Coleman       | 1   | Grimes     | 12    | Lee        | 3  | Reeves        | 0     | Williamson   | 221    |
| Collin        | 601 | Guadalupe  | 35    | Leon       | 7  | Refugio       | 0     | Wilson       | 6      |
| Collingsworth | 1   | Hale       | 6     | Liberty    | 8  | Roberts       | 0     | Winkler      | 0      |
| Colorado      | 9   | Hall       | 0     | Limestone  | 19 | Robertson     | 4     | Wise         | 27     |
| Comal         | 58  | Hamilton   | 5     | Lipscomb   | 0  | Rockwall      | 76    | Wood         | 8      |
| Comanche      | 4   | Hansford   | 0     | Live Oak   | 1  | Runnels       | 2     | Yoakum       | 1      |
| Concho        | 4   | Hardeman   | 1     | Llano      | 7  | Rusk          | 19    | Young        | 7      |
| Cooke         | 10  | Hardin     | 20    | Loving     | 0  | Sabine        | 1     | Zapata       | 1      |
| Coryell       | 31  | Harris     | 1,486 | Lubbock    | 37 | San Augustine | 1     | Zavala       | 2      |
| Cottle        | 0   | Harrison   | 28    | Lynn       | 2  | San Jacinto   | 2     | Total        | 11,355 |

Source: ICUT.

**Enrollment by State**  
**Fall 2001 - Fall 2007**

| Fall                 | 2001  | 2002  | 2003  | 2004  | 2005  | 2006  | 2007  |
|----------------------|-------|-------|-------|-------|-------|-------|-------|
| Alabama              | 34    | 30    | 34    | 33    | 33    | 32    | 29    |
| Alaska               | 13    | 14    | 14    | 18    | 20    | 15    | 13    |
| Arizona              | 61    | 57    | 56    | 62    | 81    | 79    | 78    |
| Arkansas             | 132   | 129   | 133   | 122   | 105   | 99    | 104   |
| California           | 246   | 227   | 238   | 255   | 252   | 269   | 268   |
| Colorado             | 138   | 137   | 129   | 132   | 145   | 143   | 179   |
| Connecticut          | 11    | 7     | 8     | 6     | 7     | 8     | 9     |
| Delaware             | 4     | 3     | 1     | 0     | 1     | 1     | 3     |
| District of Columbia | 1     | 0     | 2     | 2     | 2     | 2     | 1     |
| Florida              | 67    | 53    | 60    | 80    | 88    | 97    | 86    |
| Georgia              | 52    | 41    | 46    | 58    | 63    | 73    | 61    |
| Hawaii               | 15    | 9     | 8     | 15    | 13    | 10    | 14    |
| Idaho                | 7     | 4     | 5     | 5     | 9     | 5     | 13    |
| Illinois             | 88    | 87    | 103   | 97    | 105   | 117   | 125   |
| Indiana              | 36    | 31    | 28    | 28    | 28    | 29    | 28    |
| Iowa                 | 23    | 19    | 24    | 21    | 19    | 20    | 16    |
| Kansas               | 110   | 96    | 84    | 84    | 91    | 33    | 99    |
| Kentucky             | 21    | 25    | 18    | 18    | 13    | 13    | 7     |
| Louisiana            | 163   | 156   | 145   | 136   | 145   | 152   | 176   |
| Maine                | 4     | 4     | 4     | 6     | 6     | 2     | 3     |
| Maryland             | 28    | 22    | 22    | 18    | 28    | 32    | 29    |
| Massachusetts        | 10    | 13    | 12    | 18    | 19    | 22    | 19    |
| Michigan             | 15    | 14    | 16    | 16    | 22    | 31    | 25    |
| Minnesota            | 29    | 34    | 43    | 35    | 35    | 37    | 36    |
| Mississippi          | 41    | 39    | 34    | 37    | 38    | 34    | 28    |
| Missouri             | 111   | 110   | 121   | 101   | 100   | 97    | 105   |
| Montana              | 4     | 3     | 2     | 6     | 1     | 3     | 8     |
| Nebraska             | 41    | 41    | 41    | 34    | 29    | 28    | 31    |
| Nevada               | 8     | 3     | 2     | 1     | 12    | 19    | 13    |
| New Hampshire        | 10    | 8     | 8     | 8     | 5     | 7     | 9     |
| New Jersey           | 27    | 26    | 22    | 24    | 21    | 19    | 23    |
| New Mexico           | 76    | 69    | 68    | 70    | 66    | 69    | 65    |
| New York             | 22    | 25    | 18    | 27    | 24    | 25    | 26    |
| North Carolina       | 38    | 32    | 43    | 37    | 40    | 41    | 57    |
| North Dakota         | 2     | 3     | 1     | 0     | 1     | 1     | 1     |
| Ohio                 | 25    | 30    | 28    | 27    | 29    | 39    | 45    |
| Oklahoma             | 221   | 204   | 186   | 184   | 177   | 170   | 175   |
| Oregon               | 17    | 14    | 21    | 21    | 21    | 20    | 20    |
| Pennsylvania         | 19    | 22    | 29    | 27    | 26    | 32    | 31    |
| Rhode Island         | 4     | 3     | 1     | 5     | 2     | 4     | 3     |
| South Carolina       | 19    | 16    | 18    | 20    | 16    | 19    | 14    |
| South Dakota         | 12    | 12    | 9     | 12    | 8     | 8     | 11    |
| Tennessee            | 74    | 72    | 67    | 65    | 66    | 80    | 88    |
| Texas                | 11553 | 11613 | 11316 | 11233 | 11349 | 11316 | 11355 |
| Utah                 | 8     | 11    | 8     | 6     | 5     | 9     | 10    |
| Vermont              | 1     | 2     | 1     | 0     | 2     | 3     | 3     |
| Virginia             | 54    | 51    | 38    | 37    | 44    | 55    | 63    |
| Washington           | 36    | 37    | 41    | 31    | 36    | 31    | 35    |
| West Virginia        | 2     | 2     | 5     | 2     | 1     | 0     | 3     |
| Wisconsin            | 19    | 21    | 17    | 23    | 17    | 19    | 13    |
| Wyoming              | 5     | 4     | 6     | 4     | 6     | 10    | 12    |
| <b>Total</b>         | 13757 | 13685 | 13384 | 13307 | 13472 | 13479 | 13668 |

Source: IRT.



## Countries Represented by Nonresident Aliens, Fall 2001 to Fall 2007

|                              | Fall | 2001 | 2002 | 2003 | 2004 | 2005 | 2006 | 2007 |                          | Fall         | 2001 | 2002 | 2003 | 2004 | 2005 | 2006 | 2007 |
|------------------------------|------|------|------|------|------|------|------|------|--------------------------|--------------|------|------|------|------|------|------|------|
| Albania                      |      | 0    | 0    | 1    | 1    | 0    | 0    | 0    | Liberia                  |              | 0    | 0    | 0    | 0    | 0    | 0    | 2    |
| Angola                       |      | 0    | 1    | 1    | 2    | 2    | 2    | 1    | Malaysia                 |              | 2    | 1    | 0    | 1    | 1    | 3    | 3    |
| Argentina                    |      | 6    | 6    | 5    | 4    | 2    | 1    | 0    | Mali                     |              | 2    | 0    | 0    | 0    | 1    | 1    | 0    |
| Armenia                      |      | 0    | 0    | 0    | 1    | 1    | 1    | 1    | Mauritius                |              | 0    | 0    | 0    | 0    | 0    | 0    | 0    |
| Australia                    |      | 5    | 4    | 3    | 4    | 1    | 4    | 5    | Mexico                   |              | 9    | 6    | 6    | 8    | 7    | 8    | 10   |
| Austria                      |      | 0    | 1    | 1    | 0    | 0    | 0    | 0    | Moldova                  |              | 0    | 0    | 1    | 1    | 1    | 0    | 1    |
| Azerbaijan                   |      | 0    | 0    | 0    | 0    | 1    | 0    | 0    | Mongolia                 |              | 0    | 0    | 1    | 1    | 1    | 1    | 0    |
| Bahamas                      |      | 2    | 2    | 2    | 1    | 3    | 3    | 2    | Montserrat               |              | 0    | 0    | 0    | 1    | 1    | 1    | 1    |
| Bangladesh                   |      | 3    | 3    | 2    | 2    | 1    | 2    | 1    | Nepal                    |              | 1    | 2    | 2    |      | 7    | 5    | 5    |
| Barbados                     |      | 0    | 0    | 0    | 0    | 0    | 0    | 1    | Netherlands              |              | 0    | 1    | 0    | 0    | 0    | 0    | 0    |
| Belarus                      |      | 0    | 0    | 1    | 1    | 0    | 0    | 0    | New Zealand              |              | 1    | 0    | 0    | 0    | 3    | 2    | 2    |
| Belgium                      |      | 1    | 1    | 0    | 0    | 0    | 0    | 0    | Nicaragua                |              | 2    | 1    | 1    | 2    | 2    | 0    | 0    |
| Belize                       |      | 1    | 0    | 1    | 1    | 1    | 0    | 0    | Nigeria                  |              | 10   | 15   | 19   | 22   | 30   | 29   | 34   |
| Bolivia                      |      | 1    | 1    | 1    | 3    | 3    | 1    | 1    | North Mariana Isle       |              | 1    | 0    | 0    | 0    | 0    | 0    | 0    |
| Brazil                       |      | 5    | 6    | 6    | 3    | 2    | 5    | 7    | Norway                   |              | 2    | 2    | 0    | 1    | 0    | 0    | 1    |
| Bulgaria                     |      | 6    | 4    | 4    | 6    | 2    | 3    | 2    | Pakistan                 |              | 9    | 10   | 3    | 2    | 3    | 5    | 5    |
| Cambodia                     |      | 1    | 1    | 0    | 0    | 0    | 0    | 0    | Panama                   |              | 1    | 2    | 2    | 0    | 1    | 1    | 0    |
| Cameroon                     |      | 1    | 1    | 3    | 1    | 2    | 2    | 4    | Peru                     |              | 1    | 1    | 1    | 2    | 2    | 1    | 0    |
| Canada                       |      | 16   | 18   | 18   | 15   | 13   | 18   | 21   | Philippines              |              | 0    | 0    | 1    | 0    | 1    | 0    | 0    |
| Cayman Islands               |      | 1    | 2    | 2    | 2    | 0    | 0    | 0    | Poland                   |              | 1    | 1    | 2    | 2    | 2    | 1    | 2    |
| China*                       |      | 65   | 69   | 72   | 70   | 67   | 68   | 90   | Portugal                 |              | 0    | 0    | 0    | 0    | 1    | 0    | 0    |
| Colombia                     |      | 0    | 1    | 2    | 2    | 7    | 9    | 9    | Romania                  |              | 4    | 4    | 6    | 6    | 2    | 3    | 3    |
| Congo                        |      | 0    | 0    | 0    | 1    | 1    | 1    | 0    | Russia                   |              | 3    | 4    | 2    | 6    | 5    | 4    | 6    |
| Costa Rica                   |      | 5    | 7    | 8    | 8    | 7    | 1    | 0    | Rwanda                   |              | 1    | 2    | 1    | 1    | 1    | 0    | 0    |
| Cote D'Ivoire                |      | 0    | 0    | 0    | 0    | 0    | 1    | 2    | Saudi Arabia             |              | 1    | 1    | 0    | 0    | 0    | 0    | 0    |
| Croatia                      |      | 0    | 2    | 2    | 1    | 0    | 0    | 0    | Senegal                  |              | 0    | 0    | 0    | 0    | 1    | 2    | 2    |
| Cyprus                       |      | 0    | 0    | 0    | 0    | 0    | 0    | 0    | Serbia & Montenegro      |              | 1    | 1    | 0    | 0    | 1    | 1    | 3    |
| Czech Republic               |      | 0    | 0    | 1    | 3    | 4    | 5    | 6    | Sierra Leone             |              | 0    | 1    | 1    | 0    | 0    | 0    | 0    |
| Denmark                      |      | 0    | 0    | 0    | 0    | 0    | 0    | 1    | Singapore                |              | 4    | 1    | 1    | 1    | 1    | 0    | 0    |
| Dominica                     |      | 1    | 1    | 1    | 0    | 0    | 0    | 0    | Slovakia                 |              | 1    | 1    | 1    | 2    | 2    | 4    | 4    |
| Ecuador                      |      | 2    | 3    | 4    | 4    | 3    | 3    | 2    | Slovenia                 |              | 2    | 2    | 3    | 1    | 1    | 0    | 1    |
| El Salvador                  |      | 0    | 0    | 0    | 1    | 2    | 3    | 3    | Somalia                  |              | 1    | 0    | 0    | 0    | 0    | 0    | 0    |
| Ethiopia                     |      | 1    | 0    | 0    | 0    | 1    | 1    | 1    | South Africa             |              | 2    | 5    | 5    | 1    | 1    | 2    | 1    |
| Finland                      |      | 0    | 0    | 1    | 0    | 1    | 1    | 0    | Soviet Union             |              | 1    | 0    | 0    | 0    | 0    | 0    | 0    |
| France                       |      | 3    | 4    | 6    | 8    | 4    | 3    | 3    | Spain                    |              | 1    | 2    | 3    | 2    | 1    | 0    | 1    |
| Georgia                      |      | 0    | 3    | 2    | 0    | 0    | 0    | 0    | Sri Lanka                |              | 6    | 4    | 4    | 7    | 7    | 5    | 4    |
| Germany                      |      | 10   | 7    | 7    | 8    | 7    | 7    | 6    | St Vincent & Grenadines  |              | 0    | 1    | 1    | 1    | 1    | 0    | 0    |
| Ghana                        |      | 3    | 0    | 3    | 3    | 2    | 4    | 6    | Sweden                   |              | 8    | 4    | 4    | 5    | 4    | 4    | 3    |
| Greece                       |      | 0    | 0    | 0    | 1    | 1    | 0    | 0    | Switzerland              |              | 1    | 0    | 0    | 0    | 0    | 0    | 0    |
| Guatemala                    |      | 2    | 2    | 3    | 1    | 2    | 1    | 2    | Taiwan                   |              | 41   | 36   | 25   | 17   | 12   | 15   | 14   |
| Honduras                     |      | 1    | 1    | 1    | 2    | 2    | 2    | 3    | Thailand                 |              | 6    | 5    | 2    | 2    | 3    | 4    | 3    |
| Hungary                      |      | 6    | 6    | 4    | 1    | 1    | 1    | 1    | Trinidad/Tobago          |              | 3    | 5    | 4    | 3    | 3    | 4    | 2    |
| India                        |      | 32   | 39   | 40   | 45   | 34   | 28   | 25   | Turkey                   |              | 0    | 1    | 2    | 1    | 1    | 0    | 2    |
| Indonesia                    |      | 6    | 5    | 3    | 4    | 5    | 5    | 5    | Uganda                   |              | 1    | 3    | 2    | 2    | 2    | 1    | 1    |
| Iran                         |      | 0    | 0    | 0    | 1    | 1    | 1    | 1    | Ukraine                  |              | 5    | 4    | 1    | 1    | 3    | 2    | 1    |
| Italy                        |      | 1    | 2    | 2    | 2    | 1    | 0    | 2    | United Arab Emirates     |              | 2    | 2    | 0    | 0    | 0    | 0    | 0    |
| Jamaica                      |      | 2    | 1    | 0    | 0    | 0    | 0    | 1    | United Arab Republic     |              | 1    | 0    | 0    | 0    | 0    | 0    | 0    |
| Japan                        |      | 16   | 10   | 9    | 10   | 13   | 13   | 13   | United Kingdom           |              | 4    | 8    | 9    | 8    | 13   | 16   | 14   |
| Jordan                       |      | 0    | 0    | 0    | 0    | 0    | 1    | 0    | Uzbekistan               |              | 0    | 0    | 1    | 1    | 0    | 1    | 1    |
| Kazakhstan                   |      | 0    | 0    | 1    | 0    | 0    | 0    | 0    | Venezuela                |              | 10   | 9    | 11   | 10   | 11   | 11   | 12   |
| Kenya                        |      | 6    | 5    | 3    | 6    | 5    | 4    | 5    | Vietnam                  |              | 2    | 2    | 4    | 5    | 4    | 5    | 3    |
| Korea, Dem. People's         |      | 0    | 3    | 2    | 0    | 0    | 0    | 0    | Virgin Islands (British) |              | 0    | 0    | 1    | 1    | 1    | 2    | 1    |
| Korea, Rep. of               |      | 32   | 29   | 28   | 29   | 34   | 36   | 44   | Yemen (Sanaa)            |              | 0    | 0    | 1    | 1    | 0    | 0    | 0    |
| Kosovo                       |      | 0    | 0    | 0    | 1    | 0    | 0    | 0    | Yugoslavia               |              | 0    | 0    | 1    | 0    | 0    | 0    | 0    |
| Kuwait                       |      | 1    | 1    | 1    | 0    | 0    | 0    | 0    | Zaire                    |              | 0    | 0    | 0    | 0    | 0    | 0    | 1    |
| Latvia                       |      | 1    | 1    | 2    | 2    | 1    | 1    | 0    | Zimbabwe                 |              | 2    | 2    | 1    | 2    | 2    | 3    | 3    |
| Lebanon                      |      | 2    | 1    | 2    | 1    | 1    | 0    | 1    | Unknown                  |              | 0    | 0    | 1    | 0    | 0    | 0    | 4    |
| *Hong Kong counted in China. |      |      |      |      |      |      |      |      |                          | <b>Total</b> | 403  | 406  | 398  | 392  | 388  | 389  | 434  |

Source: International Programs Report, "Annual Census of Foreign Students in the United States"

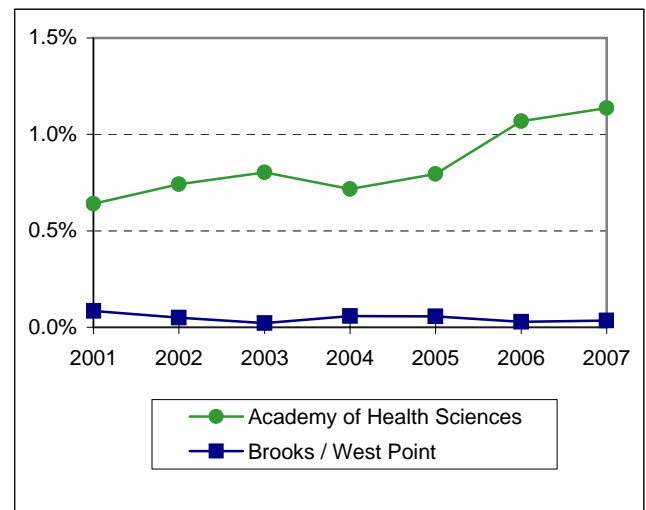
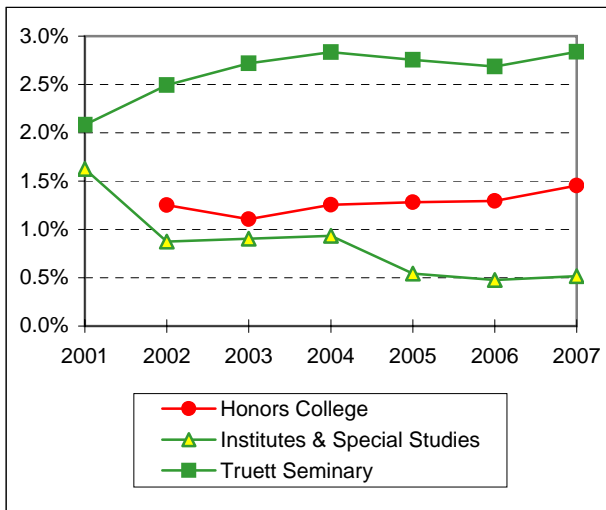
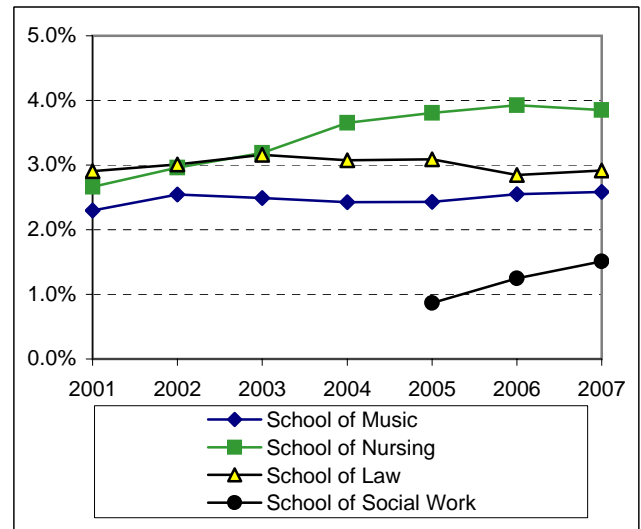
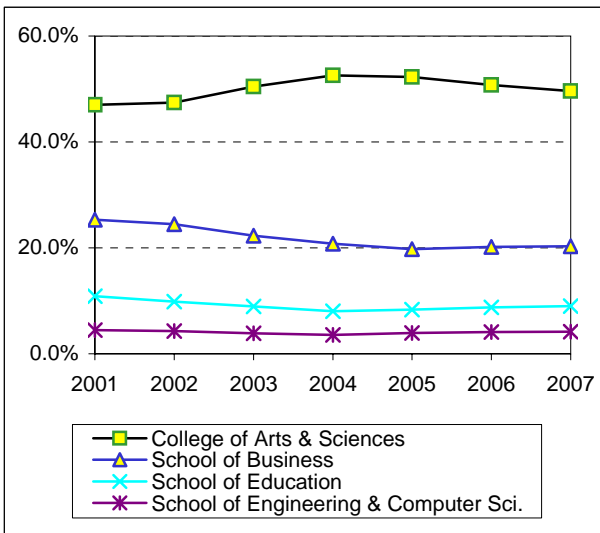
**Enrollment by Unit  
Fall 2001 - Fall 2007**

|  | Fall | 2001   | 2002   | 2003   | 2004   | 2005   | 2006   | 2007   |
|--|------|--------|--------|--------|--------|--------|--------|--------|
| <b>College of Arts &amp; Sciences</b>            |      | 6,684  | 6,713  | 7,035  | 7,257  | 7,301  | 7,129  | 7,034  |
| <b>School of Business</b>                        |      | 3,598  | 3,463  | 3,105  | 2,872  | 2,760  | 2,835  | 2,880  |
| <b>School of Education</b>                       |      | 1,546  | 1,397  | 1,246  | 1,105  | 1,169  | 1,229  | 1,272  |
| <b>School of Engineering &amp; Computer Sci.</b> |      | 633    | 605    | 536    | 495    | 551    | 574    | 593    |
| <b>School of Music</b>                           |      | 327    | 360    | 347    | 335    | 340    | 358    | 366    |
| <b>School of Nursing</b>                         |      | 379    | 419    | 444    | 504    | 532    | 551    | 546    |
| <b>School of Social Work</b>                     |      |        |        |        |        | 121    | 175    | 214    |
| <b>Honors College</b>                            |      |        | 177    | 154    | 173    | 179    | 182    | 206    |
| <b>Institutes &amp; Special Studies</b>          |      | 231    | 124    | 126    | 129    | 76     | 67     | 73     |
| <b>Graduate School</b>                           |      | 11     | 10     | 10     | 7      | 10     | 9      | 9      |
| <b>School of Law</b>                             |      | 413    | 426    | 440    | 424    | 432    | 400    | 413    |
| <b>Truett Seminary</b>                           |      | 296    | 353    | 379    | 391    | 385    | 377    | 402    |
| <b>Academy of Health Sciences</b>                |      | 91     | 105    | 112    | 99     | 111    | 150    | 161    |
| <b>Brooks / West Point</b>                       |      | 12     | 7      | 3      | 8      | 8      | 4      | 5      |
| <b>TOTAL</b>                                     |      | 14,221 | 14,159 | 13,937 | 13,799 | 13,975 | 14,040 | 14,174 |

Notes:

1. The enrollment for the Graduate School reflects students classified as "No Major."
2. The Honors College was established in 2002.
3. The School of Social Work was established in 2005.

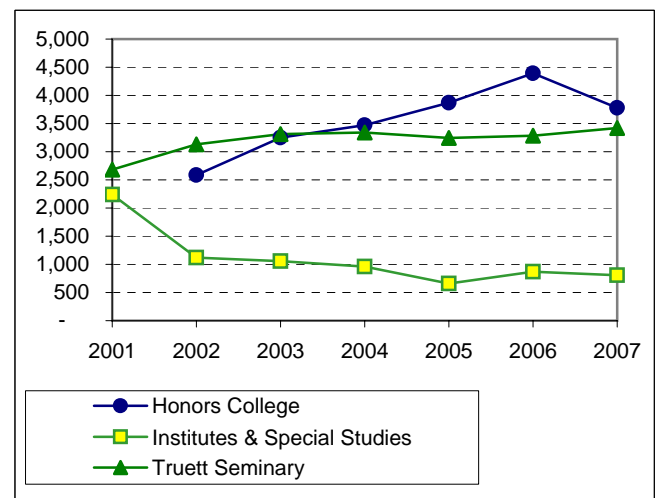
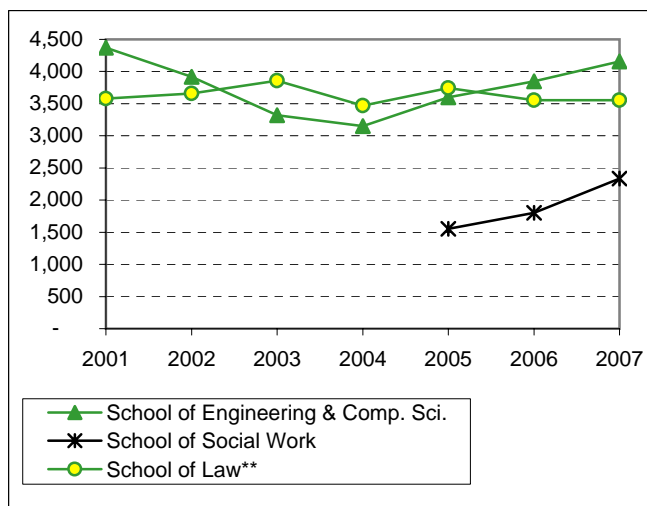
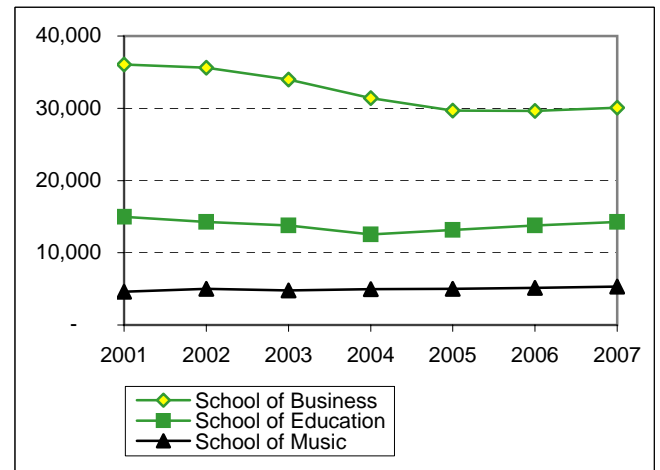
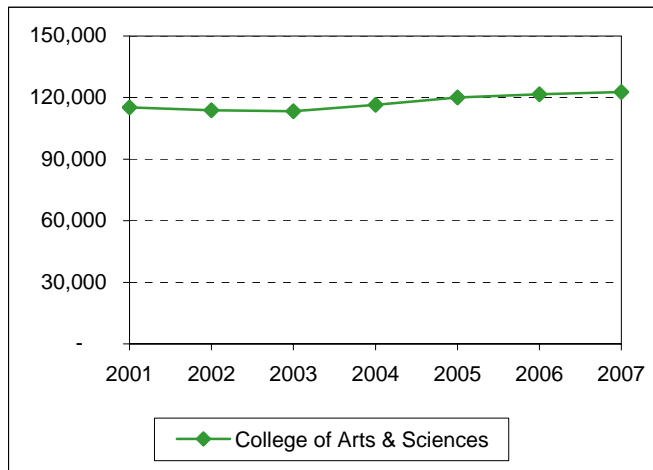
Enrollment Percentage by Unit  
Fall 2001 - Fall 2007



|  | Fall | 2001  | 2002  | 2003  | 2004  | 2005  | 2006  | 2007  |
|--|------|-------|-------|-------|-------|-------|-------|-------|
| <b>College of Arts &amp; Sciences</b>            |      | 47.0% | 47.4% | 50.5% | 52.6% | 52.2% | 50.8% | 49.6% |
| <b>School of Business</b>                        |      | 25.3% | 24.5% | 22.3% | 20.8% | 19.7% | 20.2% | 20.3% |
| <b>School of Education</b>                       |      | 10.9% | 9.9%  | 8.9%  | 8.0%  | 8.4%  | 8.8%  | 9.0%  |
| <b>School of Engineering &amp; Computer Sci.</b> |      | 4.5%  | 4.3%  | 3.8%  | 3.6%  | 3.9%  | 4.1%  | 4.2%  |
| <b>School of Music</b>                           |      | 2.3%  | 2.5%  | 2.5%  | 2.4%  | 2.4%  | 2.5%  | 2.6%  |
| <b>School of Nursing</b>                         |      | 2.7%  | 3.0%  | 3.2%  | 3.7%  | 3.8%  | 3.9%  | 3.9%  |
| <b>School of Social Work</b>                     |      |       |       |       |       | 0.9%  | 1.2%  | 1.5%  |
| <b>Honors College</b>                            |      |       | 1.3%  | 1.1%  | 1.3%  | 1.3%  | 1.3%  | 1.5%  |
| <b>Institutes &amp; Special Studies</b>          |      | 1.6%  | 0.9%  | 0.9%  | 0.9%  | 0.5%  | 0.5%  | 0.5%  |
| <b>Graduate School</b>                           |      | 0.1%  | 0.1%  | 0.1%  | 0.1%  | 0.1%  | 0.1%  | 0.1%  |
| <b>School of Law</b>                             |      | 2.9%  | 3.0%  | 3.2%  | 3.1%  | 3.1%  | 2.8%  | 2.9%  |
| <b>Truett Seminary</b>                           |      | 2.1%  | 2.5%  | 2.7%  | 2.8%  | 2.8%  | 2.7%  | 2.8%  |
| <b>Academy of Health Sciences</b>                |      | 0.6%  | 0.7%  | 0.8%  | 0.7%  | 0.8%  | 1.1%  | 1.1%  |
| <b>Brooks / West Point</b>                       |      | 0.1%  | 0.0%  | 0.0%  | 0.1%  | 0.1%  | 0.0%  | 0.0%  |

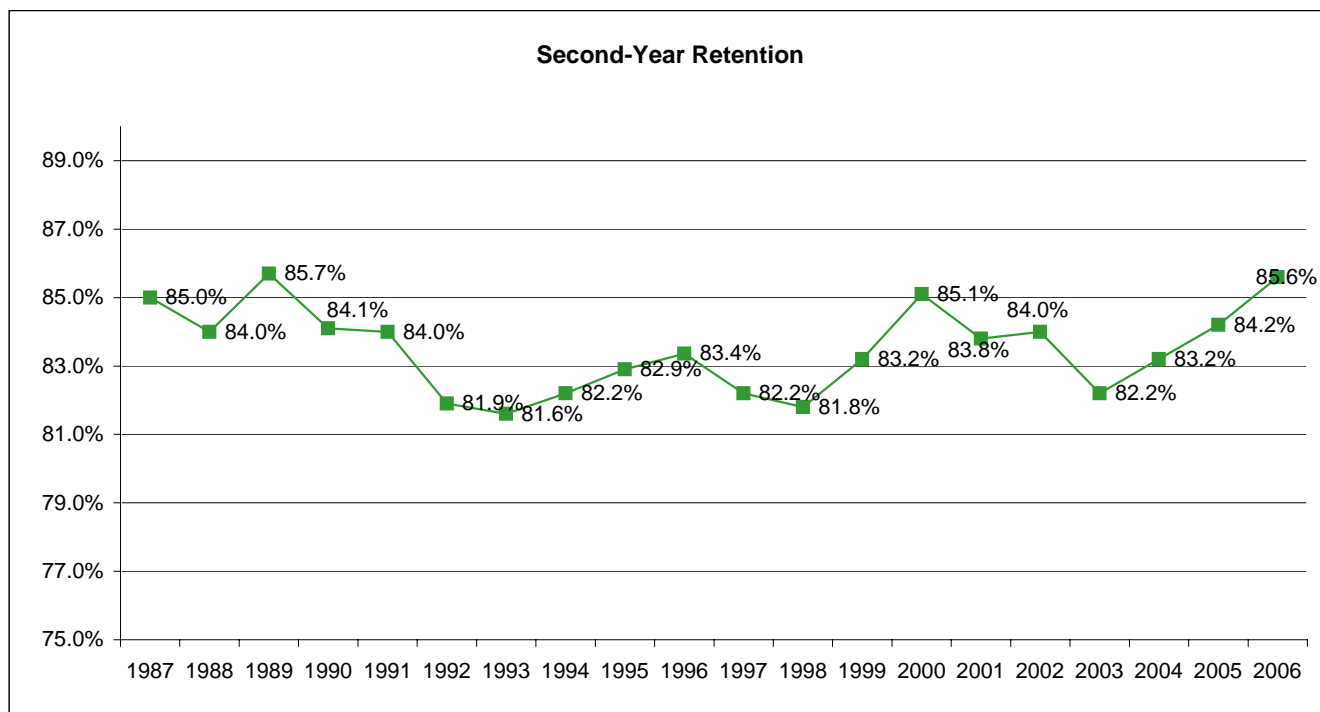
**Student Credit Hours by Unit\*  
(Excluding Health Sciences)  
Fall 2001 - Fall 2007**

|   | Fall | 2001    | 2002    | 2003    | 2004    | 2005    | 2006    | 2007    |
|---|------|---------|---------|---------|---------|---------|---------|---------|
| <b>College of Arts &amp; Sciences</b>         |      | 115,178 | 113,781 | 113,299 | 116,430 | 120,123 | 121,641 | 122,705 |
| <b>School of Business</b>                     |      | 36,057  | 35,600  | 33,980  | 31,387  | 29,696  | 29,645  | 30,081  |
| <b>School of Education</b>                    |      | 14,963  | 14,272  | 13,790  | 12,551  | 13,175  | 13,770  | 14,257  |
| <b>School of Engineering &amp; Comp. Sci.</b> |      | 4,372   | 3,919   | 3,321   | 3,153   | 3,601   | 3,847   | 4,159   |
| <b>School of Music</b>                        |      | 4,605   | 4,994   | 4,797   | 4,961   | 5,021   | 5,126   | 5,304   |
| <b>School of Nursing</b>                      |      | 3,180   | 3,399   | 3,479   | 4,107   | 4,235   | 4,209   | 4,215   |
| <b>School of Social Work</b>                  |      |         |         |         |         | 1,551   | 1,802   | 2,334   |
| <b>Honors College</b>                         |      |         | 2,588   | 3,249   | 3,474   | 3,872   | 4,394   | 3,780   |
| <b>Institutes &amp; Special Studies</b>       |      | 2,240   | 1,122   | 1,056   | 963     | 660     | 870     | 809     |
| <b>School of Law**</b>                        |      | 3,580   | 3,660   | 3,857   | 3,470   | 3,745   | 3,553   | 3,553   |
| <b>Truett Seminary</b>                        |      | 2,683   | 3,130   | 3,311   | 3,343   | 3,242   | 3,284   | 3,419   |
| <b>TOTAL</b>                                  |      | 186,858 | 186,465 | 184,139 | 183,839 | 188,921 | 192,141 | 194,616 |



Retention of First-Time Freshman Classes Entering Fall 1987 - Fall 2006

| First-Time Freshman Class of: | N     | After 1 year |       | After 2 years |       | After 3 years |       |       | After 4 years |       |       | After 5 years |       |       | After 6 years |       |       |
|-------------------------------|-------|--------------|-------|---------------|-------|---------------|-------|-------|---------------|-------|-------|---------------|-------|-------|---------------|-------|-------|
|                               |       | Cont.        | Drop. | Cont.         | Drop. | Cont.         | Drop. | Grad. | Cont.         | Drop. | Grad. | Cont.         | Drop. | Grad. | Cont.         | Drop. | Grad. |
| 1987                          | 2,313 | 85.0%        | 15.0% | 75.6%         | 24.4% | 71.7%         | 27.1% | 1.2%  | 24.2%         | 28.2% | 47.6% | 3.4%          | 28.3% | 68.3% | 1.1%          | 28.2% | 70.7% |
| 1988                          | 2,302 | 84.0%        | 16.0% | 75.5%         | 24.5% | 72.5%         | 26.5% | 1.0%  | 29.8%         | 28.3% | 41.9% | 3.3%          | 28.5% | 68.2% | 0.8%          | 27.9% | 71.3% |
| 1989                          | 2,357 | 85.7%        | 14.3% | 74.8%         | 25.2% | 71.2%         | 27.7% | 1.1%  | 28.3%         | 28.9% | 42.8% | 3.9%          | 28.9% | 67.2% | 1.2%          | 28.8% | 70.0% |
| 1990                          | 2,435 | 84.1%        | 15.9% | 73.0%         | 27.0% | 69.8%         | 29.0% | 1.2%  | 28.1%         | 29.6% | 42.3% | 4.2%          | 30.0% | 65.8% | 1.6%          | 29.4% | 69.0% |
| 1991                          | 2,156 | 84.0%        | 16.0% | 74.5%         | 25.5% | 70.7%         | 28.2% | 1.1%  | 26.5%         | 29.6% | 43.9% | 3.8%          | 29.7% | 66.5% | 1.3%          | 29.0% | 69.7% |
| 1992                          | 2,367 | 81.9%        | 18.1% | 71.5%         | 28.5% | 67.2%         | 31.5% | 1.4%  | 28.4%         | 32.3% | 39.3% | 4.8%          | 32.0% | 63.2% | 0.9%          | 32.2% | 66.9% |
| 1993                          | 2,433 | 81.6%        | 18.4% | 72.0%         | 28.0% | 68.4%         | 30.4% | 1.2%  | 27.5%         | 32.3% | 40.2% | 4.5%          | 32.3% | 63.2% | 1.3%          | 31.8% | 66.9% |
| 1994                          | 2,351 | 82.2%        | 17.8% | 72.3%         | 27.7% | 68.5%         | 30.1% | 1.4%  | 27.0%         | 31.1% | 41.9% | 4.9%          | 31.9% | 63.2% | 1.5%          | 31.8% | 66.7% |
| 1995                          | 2,339 | 82.9%        | 17.1% | 76.0%         | 24.0% | 71.4%         | 27.2% | 1.4%  | 28.8%         | 28.3% | 42.9% | 4.4%          | 28.5% | 67.1% | 1.2%          | 28.0% | 70.8% |
| 1996                          | 2,476 | 83.4%        | 16.6% | 74.8%         | 25.2% | 72.2%         | 26.9% | 0.9%  | 29.4%         | 27.7% | 42.9% | 4.0%          | 27.6% | 68.4% | 1.3%          | 27.0% | 71.7% |
| 1997                          | 2,410 | 82.2%        | 17.8% | 73.7%         | 26.3% | 70.3%         | 28.4% | 1.2%  | 30.0%         | 29.9% | 40.1% | 4.9%          | 29.0% | 66.1% | 1.4%          | 28.5% | 70.2% |
| 1998                          | 2,938 | 81.8%        | 18.2% | 75.0%         | 25.0% | 71.1%         | 27.1% | 1.7%  | 28.9%         | 28.1% | 43.0% | 4.6%          | 29.4% | 66.0% | 1.4%          | 26.8% | 71.9% |
| 1999                          | 2,772 | 83.2%        | 16.8% | 75.5%         | 24.5% | 70.7%         | 27.5% | 1.8%  | 27.7%         | 27.0% | 45.3% | 3.9%          | 27.0% | 69.1% | 1.2%          | 26.8% | 72.0% |
| 2000                          | 2,832 | 85.1%        | 14.9% | 77.9%         | 22.1% | 74.3%         | 25.0% | 0.8%  | 26.4%         | 24.6% | 49.0% | 3.6%          | 24.9% | 71.5% | 1.1%          | 25.0% | 73.9% |
| 2001                          | 2,801 | 83.8%        | 16.2% | 75.7%         | 24.3% | 73.3%         | 25.3% | 1.4%  | 25.2%         | 26.8% | 47.9% | 3.5%          | 27.5% | 69.0% | 1.0%          | 27.4% | 71.6% |
| 2002                          | 2,620 | 84.0%        | 16.0% | 76.3%         | 23.7% | 72.6%         | 25.5% | 1.9%  | 22.7%         | 26.6% | 50.7% | 2.7%          | 26.7% | 70.6% |               |       |       |
| 2003                          | 2,678 | 82.2%        | 17.8% | 74.5%         | 25.5% | 70.6%         | 27.4% | 1.9%  | 23.7%         | 28.9% | 47.3% |               |       |       |               |       |       |
| 2004                          | 2,785 | 83.2%        | 16.8% | 76.0%         | 24.0% | 72.5%         | 26.0% | 1.5%  |               |       |       |               |       |       |               |       |       |
| 2005                          | 3,168 | 84.2%        | 15.8% | 77.1%         | 22.8% |               |       |       |               |       |       |               |       |       |               |       |       |
| 2006                          | 2,783 | 85.6%        | 14.4% |               |       |               |       |       |               |       |       |               |       |       |               |       |       |
| Average                       |       | 83.5%        | 16.5% | 74.8%         | 25.2% | 71.1%         | 27.6% | 1.3%  | 27.2%         | 28.7% | 44.1% | 4.0%          | 28.9% | 67.1% | 1.2%          | 28.6% | 70.2% |
| 5-year Avg                    |       | 83.8%        | 16.2% | 76.1%         | 23.7% | 72.3%         | 26.1% | 1.6%  | 25.1%         | 27.0% | 48.0% | 4.1%          | 27.4% | 68.3% | 1.2%          | 26.9% | 71.9% |



Source: IRT.

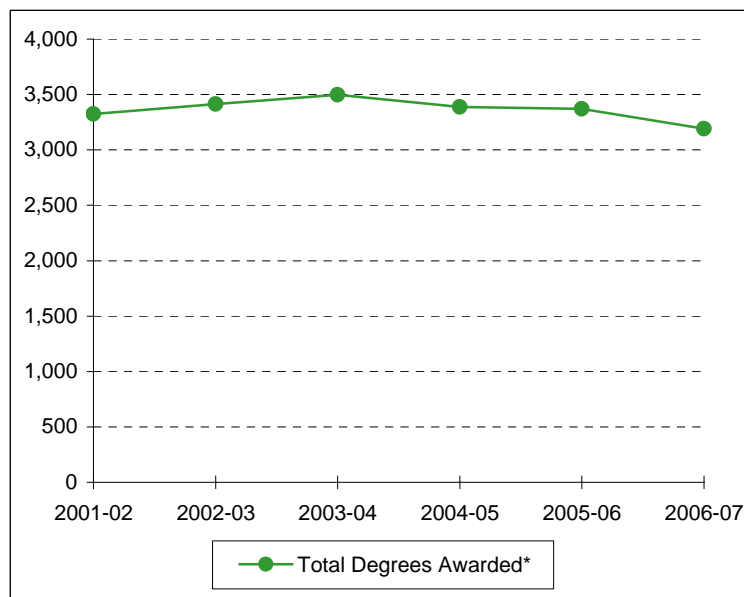
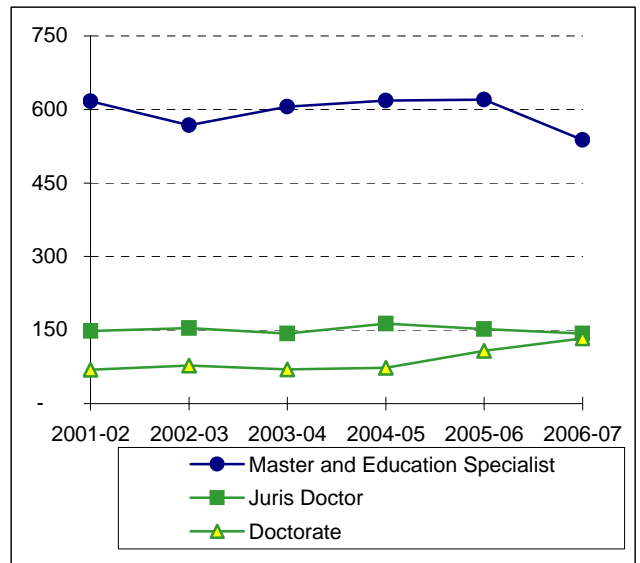
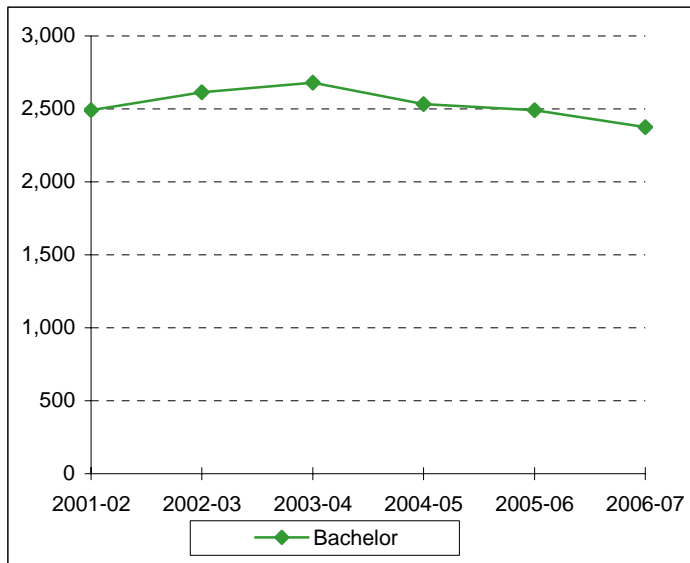
**Distribution of Degrees (Duplicated Count\*)**  
**2001-02 through 2006-07**

|  | 2001-02     | 2002-03     | 2003-04     | 2004-05     | 2005-06     | 2006-07     |
|--|-------------|-------------|-------------|-------------|-------------|-------------|
| Bachelor of Arts   | 997         | 1036        | 1090        | 1084        | 1075        | 931         |
| Bachelor of Business Administration                      | 1009        | 1028        | 1019        | 909         | 821         | 761         |
| Bachelor of Fine Arts                                    | 37          | 40          | 40          | 54          | 42          | 51          |
| Bachelor of Music  | 30          | 29          | 27          | 39          | 36          | 33          |
| Bachelor of Music Education                              | 18          | 28          | 15          | 19          | 18          | 29          |
| Bachelor of Science                                      | 165         | 200         | 229         | 261         | 270         | 289         |
| Bachelor of Science in Aviation Sciences                 | 13          | 8           | 10          | 6           | 13          | 8           |
| Bachelor of Science in Computer Science                  | 24          | 35          | 20          | 17          | 23          | 16          |
| Bachelor of Science in Education                         | 350         | 345         | 363         | 213         | 212         | 194         |
| Bachelor of Science in Electrical & Computer Engineering |             | 23          | 25          | 16          | 24          | 28          |
| Bachelor of Science in Engineering                       | 41          | 7           | 2           | 1           | 3           | 4           |
| Bachelor of Science in Family & Consumer Sciences        | 59          | 73          | 102         | 87          | 77          | 100         |
| Bachelor of Science in Informatics                       | 8           | 17          | 16          | 12          | 11          | 9           |
| Bachelor of Science in Mechanical Engineering            |             | 12          | 15          | 20          | 14          | 27          |
| Bachelor of Science in Nursing                           | 86          | 90          | 85          | 108         | 121         | 123         |
| Bachelor of Social Work                                  |             |             |             | 2           | 13          | 19          |
| <b>TOTAL BACHELOR DEGREES</b>                            | <b>2837</b> | <b>2971</b> | <b>3058</b> | <b>2848</b> | <b>2773</b> | <b>2622</b> |
| Master of Accountancy                                    | 39          | 35          | 47          | 40          | 39          | 33          |
| Master of Arts   | 66          | 56          | 77          | 74          | 67          | 71          |
| Master of Business Administration                        | 149         | 105         | 95          | 104         | 74          | 77          |
| Master of Business Admin. in International Management    | 1           | 0           | 0           | 0           | 1           | 0           |
| Master of Clinical Gerontology                           | 4           | 7           |             |             |             |             |
| Master of Divinity                                       | 33          | 51          | 71          | 70          | 74          | 57          |
| Master of Engineering                                    |             |             |             |             | 1           | 2           |
| Master of Environmental Studies                          | 0           | 1           | 2           | 2           | 3           | 1           |
| Master of Fine Arts                                      | 2           | 0           | 1           | 2           | 2           | 3           |
| Master of Health Administration                          | 39          | 38          | 37          | 43          | 45          | 41          |
| Master of International Journalism                       | 1           | 1           | 2           | 2           | 1           | 2           |
| Master of International Management                       | 0           | 0           | 1           | 0           | 0           | 0           |
| Master of Music  | 22          | 31          | 23          | 25          | 26          | 28          |
| Master of Physical Therapy                               | 21          | 18          | 17          | 16          | 0           | 0           |
| Master of Public Policy and Administration               | 4           | 2           | 6           | 3           | 3           | 0           |
| Master of Science  | 21          | 34          | 22          | 44          | 38          | 33          |
| Master of Science in Biomedical Engineering              |             |             |             |             | 2           | 1           |
| Master of Science in Clinical Psychology                 | 8           | 11          | 11          | 11          | 7           | 4           |
| Master of Science in Communication Sciences & Disorders  | 28          | 26          | 33          | 22          | 34          | 25          |
| Master of Science in Economics                           | 6           | 4           | 10          | 4           | 8           | 9           |
| Master of Science in Education                           | 83          | 64          | 77          | 80          | 97          | 74          |
| Master of Science in Electrical/Computer Engineering     |             |             |             | 1           | 6           | 1           |
| Master of Science in Gerontology                         | 7           | 12          |             |             |             |             |
| Master of Science in Information Systems                 | 31          | 18          | 14          | 15          | 15          | 12          |
| Master of Science in Limnology                           | 0           | 0           | 0           | 0           | 0           | 0           |
| Master of Science in Mechanical Engineering              |             |             |             |             | 1           | 0           |
| Master of Science in Nursing                             | 14          | 13          | 21          | 15          | 20          | 15          |
| Master of Social Work                                    | 27          | 29          | 25          | 32          | 39          | 30          |
| Master of Taxation                                       | 6           | 10          | 10          | 11          | 13          | 11          |
| Master of Theological Studies                            |             |             |             |             | 2           | 4           |
| <b>TOTAL MASTER'S DEGREES</b>                            | <b>612</b>  | <b>566</b>  | <b>602</b>  | <b>616</b>  | <b>618</b>  | <b>534</b>  |
| <b>TOTAL EDUCATION SPECIALIST DEGREES</b>                | <b>6</b>    | <b>4</b>    | <b>4</b>    | <b>2</b>    | <b>2</b>    | <b>7</b>    |
| <b>TOTAL JURIS DOCTOR DEGREES</b>                        | <b>148</b>  | <b>154</b>  | <b>143</b>  | <b>163</b>  | <b>163</b>  | <b>143</b>  |
| Doctor of Education                                      | 18          | 25          | 23          | 22          | 26          | 10          |
| Doctor of Ministry                                       | 2           | 7           | 3           | 5           | 5           | 8           |
| Doctor of Philosophy                                     | 26          | 31          | 34          | 29          | 50          | 56          |
| Doctor of Psychology                                     | 11          | 11          | 7           | 12          | 9           | 12          |
| Doctor of Physical Therapy                               |             |             |             |             | 14          | 43          |
| Doctor of Science in Physical Therapy                    | 12          | 4           | 3           | 5           | 4           | 4           |
| <b>TOTAL DOCTORAL DEGREES</b>                            | <b>69</b>   | <b>78</b>   | <b>70</b>   | <b>73</b>   | <b>108</b>  | <b>133</b>  |
| <b>TOTAL DEGREES AWARDED</b>                             | <b>3672</b> | <b>3773</b> | <b>3877</b> | <b>3702</b> | <b>3664</b> | <b>3439</b> |

\* Degree information on this page is reported beginning with the Summer semester and including the following Fall and Spring terms.  
An individual graduate with multiple majors is counted as a whole graduate in each major area of study (i.e., duplicated count).

Source: "Statistics on Enrollment and Degrees Awarded", IRT.

**Summary of Degrees Awarded (Unduplicated Count\*)  
2001-02 through 2006-07**



| Degree Level:                   | 2001-02 | 2002-03 | 2003-04 | 2004-05 | 2005-06 | 2006-07 |
|---------------------------------|---------|---------|---------|---------|---------|---------|
| Bachelor                        | 2,491   | 2,615   | 2,679   | 2,533   | 2,491   | 2,376   |
| Master and Education Specialist | 617     | 568     | 606     | 618     | 620     | 538     |
| Juris Doctor                    | 148     | 154     | 143     | 163     | 152     | 143     |
| Doctorate                       | 69      | 78      | 70      | 73      | 108     | 133     |
| Total Degrees Awarded*          | 3,325   | 3,415   | 3,498   | 3,387   | 3,371   | 3,190   |

\*The information on this page indicates the number of degree recipients (i.e., unduplicated count). Degree information is reported beginning with the Summer semester and including the following Fall and Spring terms.

**Degree Programs  
(as of December 2007)**

|                                    |   |   |
|------------------------------------|---|---|
| Accounting (BBA)                   | Communication Sci. & Disorders (BA)       | Exercise, Nutrition & Preventive Health (PhD)     |
| Accounting (MAcc)                  | Communication Sci. & Disorders (MA)       | Exercise Physiology (BSEd)                        |
| Advanced Nursing Leadership (MSN)  | Communication Sci. & Disorders (MSCSD)    | Family Nurse Practitioners (MSN)                  |
| Air Science and Environmnet (IMES) | Communication Specialist (BA)             | Fashion Design (BA)                               |
| American Studies (BA)              | Communication Studies (MA)                | Fashion Design (BSFCS)                            |
| American Studies (MA)              | Community Health (BSEd)                   | Fashion Merchandising (BA)                        |
| Anthropology (BA)                  | Composition (BM)                          | Fashion Merchandising (BSFCS)                     |
| Anthropology (BS)                  | Composition (MM)                          | Film and Digital Media (BA)                       |
| Applied Mathematics (BS)           | Computer Science Grade 8-12 (BSEd)        | Finance (BBA)                                     |
| Applied Music (BM)                 | Computer Science (BA)                     | Financial Services / Planning (BBA)               |
| Archaeology (BA)                   | Computer Science (BSCS)                   | Forestry (BA)                                     |
| Architecture (BA)                  | Computer Science (MS)                     | Forestry (BS)                                     |
| Art All-Level (BSEd)               | Conducting (MM)                           | French (BA)                                       |
| Art History (BA)                   | Curriculum & Instruction (EdD)            | General Family & Consumer Sci. (BA)               |
| Asian Studies (BA)                 | Curriculum & Instruction (MA)             | General Family & Consumer Sci. (BSFCS)            |
| Athletic Training (BSEd)           | Curriculum & Instruction (MSEd)           | General Studies in HHPR (BSEd)                    |
| Aviation Sciences (BSAvSc)         | Dentistry (BA)                            | Geography (BA)                                    |
| Baylor Business Fellows (BBA)      | Dentistry (BS)                            | Geology (BS)                                      |
| Biblical & Related Languages (BA)  | Design (BFA)                              | Geology (MS)                                      |
| Biochemistry (BA)                  | Directing (MFA)                           | Geology (PhD)                                     |
| Biochemistry (BS)                  | Distribution Management/Technology (BBA)  | Geophysics (BS)                                   |
| Bioinformatics (BSI)               | Early Childhood - Grade 4 (BSEd)          | German (BA)                                       |
| Biology (BA)                       | Earth Science (BA)                        | Great Texts of the Western Tradition (BA)         |
| Biology (BS)                       | Earth Science (MA)                        | Greek (BA)  |
| Biology (MA)                       | Economics (BA)                            | Health Care Administration (MHA)                  |
| Biology (MS)                       | Economics (BBA)                           | Health, Human Performance,<br>& Recreation (MSEd) |
| Biology (PhD)                      | Economics (BS)                            | Health Science Studies (BSEd)                     |
| Biomedical Engineering (MSBME)     | Economics (MSEco)                         | History (BA)                                      |
| Biomedical Studies (MS)            | Education (MA)                            | History (MA)                                      |
| Biomedical Studies (PhD)           | Educational Administration (EdS)          | Human Resources Management (BBA)                  |
| Business Administration (MBA)      | Educational Administration (MSEd)         | Information Systems (BBA)                         |
| Business for Secondary Educ. (BBA) | Educational Psychology (EdS)              | Information Systems Management (MBA)              |
| Business French (BBA)              | Educational Psychology (MA)               | Information Systems (MSIS)                        |
| Business German (BBA)              | Educational Psychology (MSEd)             | Instrumental Music (BME)                          |
| Business - Journalism (BBA)        | Educational Psychology (PhD)              | Interior Design (BA)                              |
| Business Russian (BBA)             | Electrical & Computer Engineering (BSECE) | Interior Design (BSFCS)                           |
| Business Spanish (BBA)             | Electrical & Computer Engineering (MSECE) | International Business (BBA)                      |
| Chemistry (BA)                     | Emergency Medicine (DScPA)                | International Economics (MA)                      |
| Chemistry (BS)                     | Engineering (BSE)                         | International Economics (MS)                      |
| Chemistry (MS)                     | Engineering (ME)                          | International Journalism (MIJ)                    |
| Chemistry (PhD)                    | English (BA)                              | International Management (MBA)                    |
| Child & Family Studies (BA)        | English (MA)                              | International Management (MBAIM)                  |
| Child & Family Studies (BSFCS)     | English (PhD)                             | International Relations (MA)                      |
| Choral Music (BME)                 | English Grade 4-8 (BSEd)                  | International Studies (BA)                        |
| Church Music (BM)                  | English Grade 8-12 (BSEd)                 | Journalism (BA)                                   |
| Church Music (MM)                  | Entrepreneurship (BBA)                    | Journalism (MA)                                   |
| Church-State Studies (MA)          | Environmental Biology (MS)                | Language and Linguistics (BA)                     |
| Church-State Studies (PhD)         | Environmental Science (BS)                | Latin American Studies (BA)                       |
| Classics (BA)                      | Environmental Studies (BA)                | Latin (BA)  |
| Clinical Laboratory Science (BS)   | Environmental Studies (BS)                | Law (JD)  |
| Clinical Psychology (MSCP)         | Environmental Studies (MES)               | Life Science Grade 8-12 (BSEd)                    |
| Clinical Psychology (PsyD)         | Environmental Studies (MS)                |   |

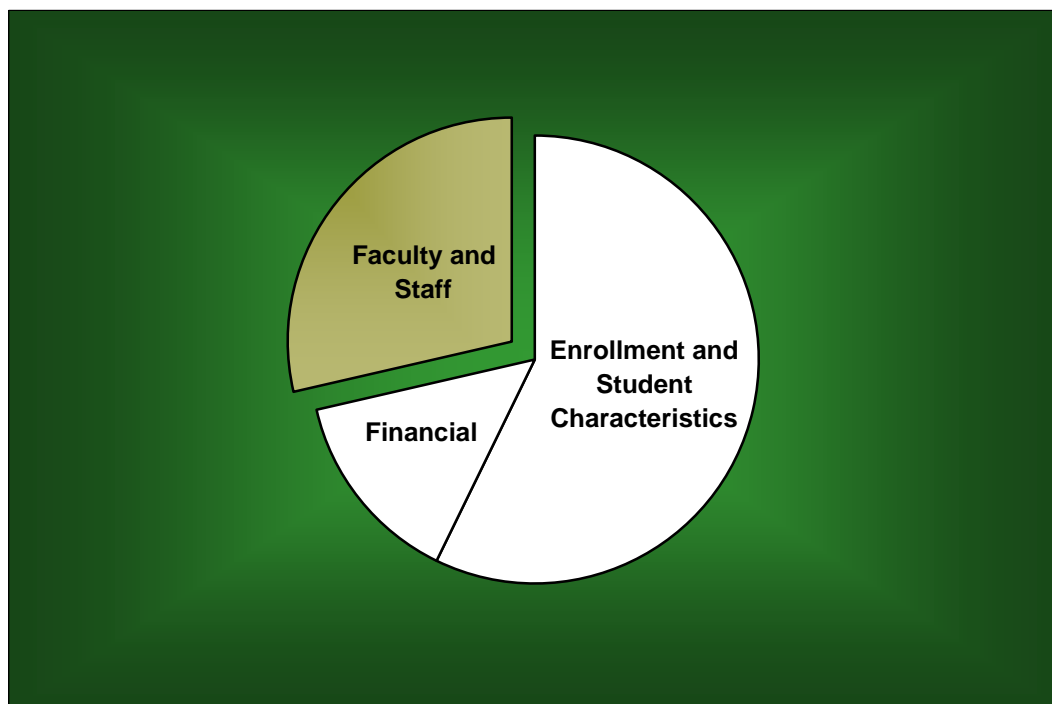


---

|                                     |                                       |
|-------------------------------------|---------------------------------------|
| Limnology (MSL)                     | Political Science (PhD)               |
| Management (BBA)                    | Professional Selling (BBA)            |
| Marketing (BBA)                     | Professional Writing (BA)             |
| Mathematics (BA)                    | Psychology (BA)                       |
| Mathematics (BS)                    | Psychology (BS)                       |
| Mathematics (MS)                    | Psychology (PhD)                      |
| Mathematics (PhD)                   | Public Administration (BBA)           |
| Mathematics Grade 4-8 (BSEd)        | Public Policy & Administration (MPPA) |
| Mathematics Grade 8-12 (BSEd)       | Real Estate (BBA)                     |
| Mechanical Engineering (BSME)       | Recreation (BSEd)                     |
| Mechanical Engineering (MSME)       | Religion (BA)                         |
| Media Business (BBA)                | Religion (MA)                         |
| Medical Humanities (BA)             | Religion (PhD)                        |
| Medicine (BA)                       | Religion, Politics and Society (PhD)  |
| Medicine (BS)                       | Risk Management and Insurance (BBA)   |
| Ministry (DMin)                     | Russian (BA)                          |
| Museum Studies (BA)                 | Science Grade 4-8 (BSEd)              |
| Museum Studies (BS)                 | Slavic and East European Studies (BA) |
| Museum Studies (MA)                 | Social Studies Grade 4-8 (BSEd)       |
| Music (BA)                          | Social Studies Grade 8-12 (BSEd)      |
| Music Education (MM)                | Social Work (BSW)                     |
| Music History & Literature (BM)     | Social Work (MSW)                     |
| Music History & Literature (MM)     | Sociology (BA)                        |
| Music Theory (MM)                   | Sociology (MA)                        |
| Neonatal Nurse Practitioner (MSN)   | Sociology (PhD)                       |
| Neuroscience (BS)                   | Spanish (BA)                          |
| Neuroscience (MA)                   | Spanish (MA)                          |
| Nursing (BSN)                       | Spanish All-Level (BSEd)              |
| Nutrition (MS)                      | Special Education All-Level (BSEd)    |
| Nutrition Sciences (BA)             | Speech Communication (BA)             |
| Nutrition Sciences (BS)             | Sports, Sponsorship & Sales (BBA)     |
| Nutrition Sciences (BSFCS)          | Statistics (BS)                       |
| Optometry (BA)                      | Statistics (MS)                       |
| Optometry (BS)                      | Statistics (PhD)                      |
| Pedagogy (BM)                       | Studio Art (BA)                       |
| Performance (BFA)                   | Studio Art (BFA)                      |
| Performance (MM)                    | Taxation (MT)                         |
| Philosophy (BA)                     | Theater Arts (BA)                     |
| Philosophy (MA)                     | Theater Arts (MA)                     |
| Philosophy (PhD)                    | Theological Studies (MTS)             |
| Physical Education All-Level (BSEd) | Theology (MDiv)                       |
| Physical Science Grade 8-12 (BSEd)  | Theory (BM)                           |
| Physical Therapy (DPT)              | University Scholars (BA)              |
| Physical Therapy (DScPT)            |                                       |
| Physics (BA)                        |                                       |
| Physics (BS)                        |                                       |
| Physics (MA)                        |                                       |
| Physics (MS)                        |                                       |
| Physics (PhD)                       |                                       |
| Piano Accompanying (MM)             |                                       |
| Piano Pedagogy & Performance (MM)   |                                       |
| Political Science (BA)              |                                       |
| Political Science (MA)              |                                       |

## ***Faculty and Staff***

---



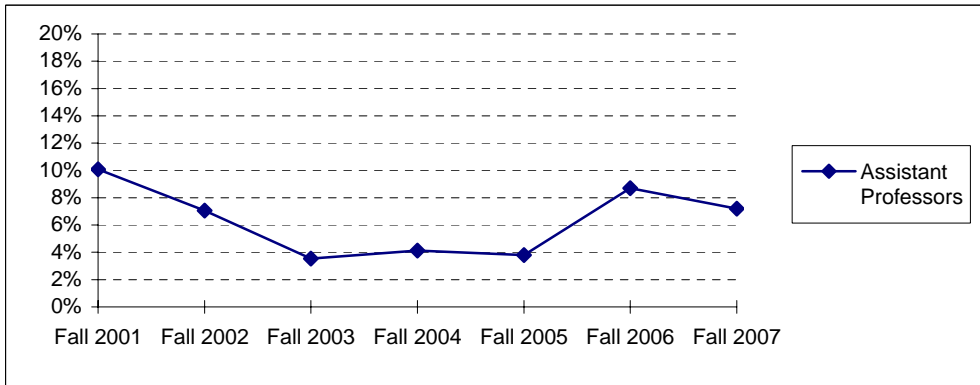
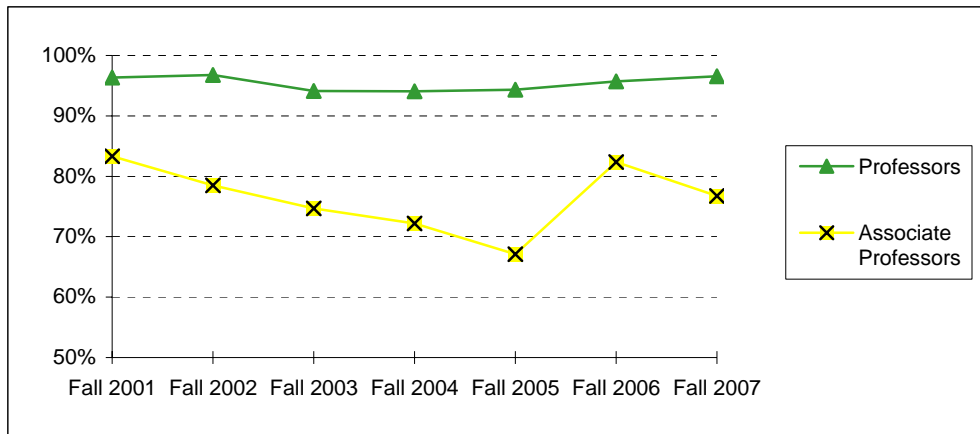
**Full-Time Faculty Positions (AAUP Definition)  
Fall 2001 - Fall 2007**

| Rank                     | Fall 2001 |        | Fall 2002 |        | Fall 2003 |        | Fall 2004 |        | Fall 2005 |        | Fall 2006 |        | Fall 2007 |        |
|--------------------------|-----------|--------|-----------|--------|-----------|--------|-----------|--------|-----------|--------|-----------|--------|-----------|--------|
|                          | Male      | Female | Male      | Female | Male      | Female | Male      | Female | Male      | Female | Male      | Female | Male      | Female |
| <b>Professors:</b>       |           |        |           |        |           |        |           |        |           |        |           |        |           |        |
| <b>Number</b>            | 211       | 34     | 213       | 33     | 210       | 29     | 205       | 32     | 197       | 32     | 198       | 35     | 195       | 36     |
| <b>Tenured</b>           | 202       | 34     | 205       | 33     | 196       | 29     | 191       | 32     | 186       | 30     | 188       | 35     | 187       | 36     |
| <b>Associate Prof.:</b>  |           |        |           |        |           |        |           |        |           |        |           |        |           |        |
| <b>Number</b>            | 89        | 49     | 96        | 48     | 105       | 49     | 108       | 43     | 108       | 44     | 124       | 46     | 131       | 54     |
| <b>Tenured</b>           | 71        | 44     | 71        | 42     | 75        | 40     | 74        | 35     | 68        | 34     | 100       | 40     | 100       | 42     |
| <b>Assistant Prof:</b>   |           |        |           |        |           |        |           |        |           |        |           |        |           |        |
| <b>Number</b>            | 85        | 54     | 93        | 63     | 99        | 70     | 102       | 68     | 98        | 60     | 84        | 54     | 96        | 57     |
| <b>Tenured</b>           | 6         | 8      | 3         | 8      | 2         | 4      | 3         | 4      | 2         | 4      | 5         | 7      | 4         | 7      |
| <b>Instructors:</b>      |           |        |           |        |           |        |           |        |           |        |           |        |           |        |
| <b>Number</b>            | 0         | 3      | 0         | 1      | 0         | 0      | 0         | 1      | 0         | 1      | 0         | 1      | 0         | 1      |
| <b>Tenured</b>           | 0         | 1      | 0         | 0      | 0         | 0      | 0         | 1      | 0         | 1      | 0         | 1      | 0         | 1      |
| <b>Senior Lecturers:</b> |           |        |           |        |           |        |           |        |           |        |           |        |           |        |
| <b>Number</b>            | 26        | 38     | 22        | 39     | 22        | 38     | 21        | 37     | 21        | 33     | 21        | 33     | 27        | 38     |
| <b>Lecturers:</b>        |           |        |           |        |           |        |           |        |           |        |           |        |           |        |
| <b>Number</b>            | 37        | 71     | 58        | 90     | 62        | 93     | 64        | 89     | 70        | 91     | 75        | 96     | 78        | 100    |
| <b>Total Number</b>      | 448       | 249    | 482       | 274    | 498       | 279    | 500       | 270    | 494       | 261    | 502       | 265    | 527       | 286    |
| <b>Total Tenured</b>     | 279       | 87     | 279       | 83     | 273       | 73     | 268       | 72     | 256       | 69     | 293       | 83     | 291       | 86     |

**Highest Degree Earned by Full-Time Faculty  
Fall 2001 - Fall 2007**

|                     | Fall 2001 | Fall 2002 | Fall 2003 | Fall 2004 | Fall 2005 | Fall 2006 | Fall 2007 |
|---------------------|-----------|-----------|-----------|-----------|-----------|-----------|-----------|
| <b>Associate's</b>  | 0         | 1         | 1         | 1         | 0         | 0         | 0         |
| <b>Bachelor's</b>   | 1         | 1         | 2         | 2         | 6         | 5         | 3         |
| <b>Master's</b>     | 165       | 199       | 222       | 213       | 200       | 180       | 190       |
| <b>Doctoral</b>     | 507       | 550       | 569       | 572       | 566       | 591       | 631       |
| <b>Professional</b> | 24        | 26        | 26        | 26        | 24        | 28        | 27        |
| <b>Total</b>        | 697       | 777       | 820       | 814       | 796       | 804       | 851       |

**Percentage of Full-Time Faculty with Tenure (AAUP Definition)  
Fall 2001 - Fall 2007**



|                             | Fall 2001 | Fall 2002 | Fall 2003 | Fall 2004 | Fall 2005 | Fall 2006 | Fall 2007 |
|-----------------------------|-----------|-----------|-----------|-----------|-----------|-----------|-----------|
| <b>Professors</b>           | 96.3%     | 96.7%     | 94.1%     | 94.1%     | 94.3%     | 95.7%     | 96.5%     |
| <b>Associate Professors</b> | 83.3%     | 78.5%     | 74.7%     | 72.2%     | 67.1%     | 82.4%     | 76.8%     |
| <b>Assistant Professors</b> | 10.1%     | 7.1%      | 3.6%      | 4.1%      | 3.8%      | 8.7%      | 7.2%      |
| <b>Instructors</b>          | 33.3%     |           |           |           |           | 100.0%    | 100.0%    |
| <b>All Faculty</b>          | 52.5%     | 47.9%     | 44.5%     | 44.2%     | 43.0%     | 49.0%     | 46.4%     |

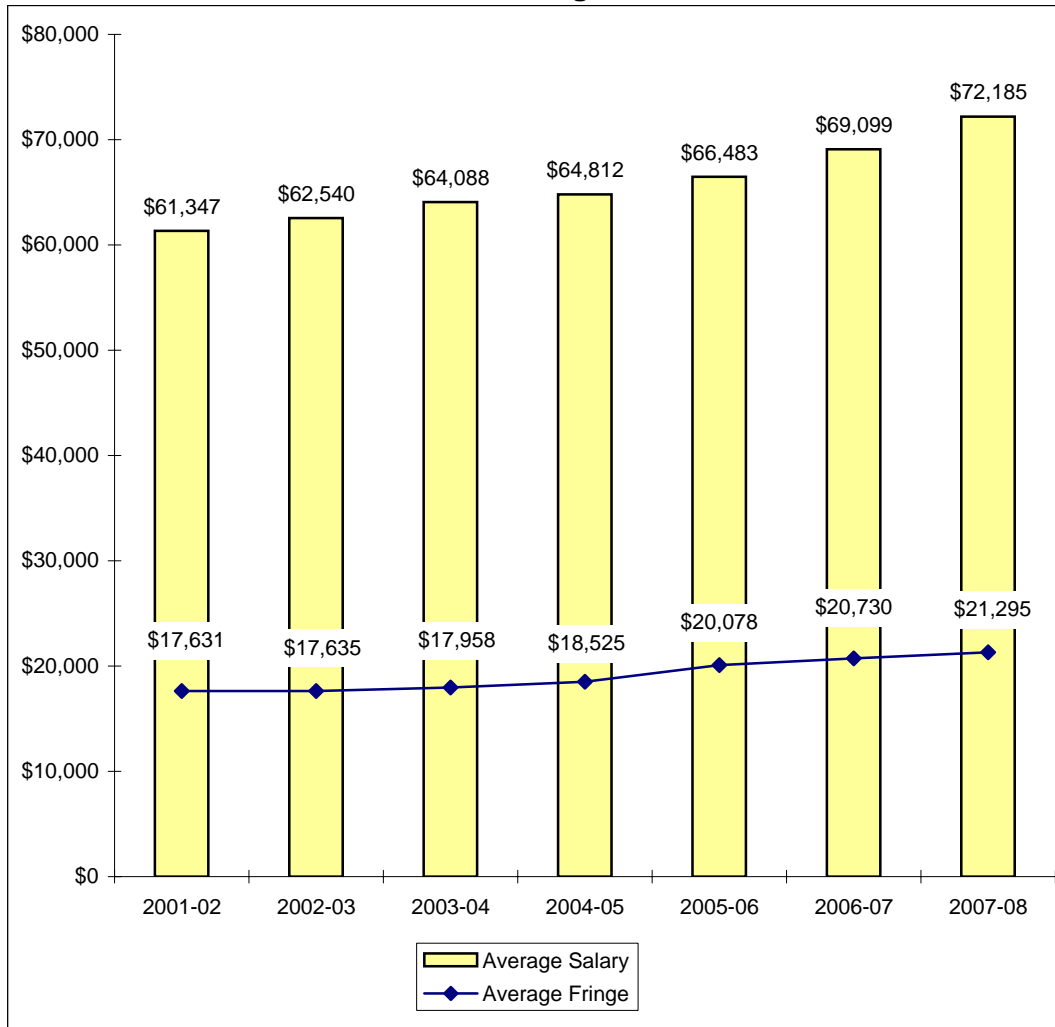
**Average Salaries of Full-Time Instructional Faculty  
on Academic Year Contracts (AAUP Definition)  
Fall 2001 - Fall 2007**

| Rank   | Fall 2001      |                | Fall 2002      |                | Fall 2003      |                | Fall 2004      |                |
|--|----------------|----------------|----------------|----------------|----------------|----------------|----------------|----------------|
|  | Number in Rank | Average Salary | Number in Rank | Average Salary | Number in Rank | Average Salary | Number in Rank | Average Salary |
| Professor  | 245            | \$81,747       | 246            | \$83,562       | 239            | \$86,590       | 237            | \$87,091       |
| Associate Professor  | 138            | \$62,697       | 144            | \$65,136       | 154            | \$67,706       | 151            | \$67,501       |
| Assistant Professor  | 139            | \$50,046       | 156            | \$55,208       | 169            | \$57,177       | 170            | \$58,675       |
| Instructor   | 3              | *              | 1              | *              | 0              |                | 1              | *              |
| Senior Lecturer  | 64             | \$45,227       | 61             | \$46,482       | 60             | \$47,826       | 58             | \$47,719       |
| Lecturer   | 108            | \$37,884       | 148            | \$39,478       | 155            | \$39,627       | 153            | \$41,055       |
| All Ranks  | 697            | \$61,347       | 756            | \$62,540       | 777            | \$64,088       | 770            | \$64,812       |
| Average Fringe   |                | \$17,631       |                | \$17,635       |                | \$17,958       |                | \$18,525       |
| Fringe as a Percentage of Average Salary                     |                | 28.7%          |                | 28.2%          |                | 28.0%          |                | 28.6%          |
| Percentage Increase in Average Salary for Continuing Faculty |                | 5.0%           |                | 4.9%           |                | 3.4%           |                | 0.2%           |

| Rank   | Fall 2005      |                | Fall 2006      |                | Fall 2007      |                |
|--|----------------|----------------|----------------|----------------|----------------|----------------|
|  | Number in Rank | Average Salary | Number in Rank | Average Salary | Number in Rank | Average Salary |
| Professor  | 229            | \$89,219       | 233            | \$92,385       | 231            | \$97,241       |
| Associate Professor  | 152            | \$68,432       | 170            | \$70,179       | 185            | \$74,681       |
| Assistant Professor  | 158            | \$52,385       | 138            | \$67,143       | 153            | \$69,536       |
| Instructor   | 1              | *              | 1              | *              | 1              | *              |
| Senior Lecturer  | 54             | \$48,728       | 54             | \$50,950       | 65             | \$52,175       |
| Lecturer   | 161            | \$42,388       | 171            | \$43,710       | 178            | \$46,765       |
| All Ranks  | 755            | \$66,483       | 767            | \$69,099       | 813            | \$72,185       |
| Average Fringe   |                | \$20,078       |                | \$20,730       |                | \$21,295       |
| Fringe as a Percentage of Average Salary                     |                | 30.2%          |                | 30.0%          |                | 29.5%          |
| Percentage Increase in Average Salary for Continuing Faculty |                | 3.4%           |                | 5.0%           |                | 6.0%           |

\*Data not displayed for five or fewer faculty.

**Average Compensation of Full-Time Instructional Faculty  
on Academic Year Contracts  
2001-02 through 2007-08**

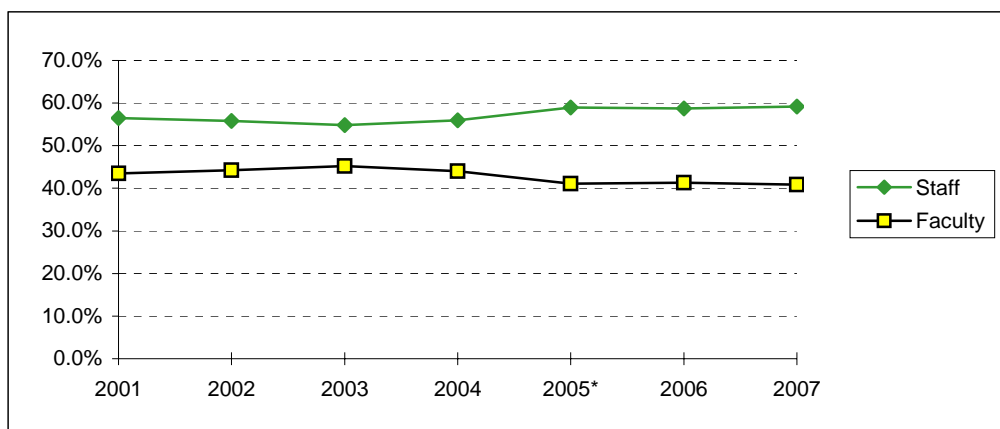


**Institutional Staff  
Fall 2001 - Fall 2007**

| Fall                               | 2001 | 2002 | 2003 | 2004 | 2005* | 2006 | 2007 |
|------------------------------------|------|------|------|------|-------|------|------|
| <b>Faculty:</b>                    |      |      |      |      |       |      |      |
| Full-Time                          | 725  | 806  | 851  | 834  | 755   | 767  | 813  |
| Part-Time                          | 116  | 110  | 144  | 113  | 155   | 161  | 159  |
| <b>Executive/Administrative:</b>   |      |      |      |      |       |      |      |
| Full-Time                          | 172  | 173  | 181  | 188  | 221   | 251  | 275  |
| Part-Time                          | 0    | 1    | 1    | 2    | 1     | 1    | 1    |
| <b>Other Professional:</b>         |      |      |      |      |       |      |      |
| Full-Time                          | 352  | 421  | 453  | 456  | 500   | 476  | 532  |
| Part-Time                          | 14   | 14   | 11   | 18   | 18    | 16   | 18   |
| <b>Technical/Paraprofessional:</b> |      |      |      |      |       |      |      |
| Full-Time                          | 44   | 33   | 40   | 40   | 105   | 139  | 143  |
| Part-Time                          | 3    | 4    | 2    | 3    | 17    | 18   | 18   |
| <b>Clerical/Secretarial:</b>       |      |      |      |      |       |      |      |
| Full-Time                          | 392  | 399  | 408  | 396  | 335   | 332  | 325  |
| Part-Time                          | 44   | 39   | 42   | 39   | 33    | 27   | 33   |
| <b>Skilled Crafts:</b>             |      |      |      |      |       |      |      |
| Full-Time                          | 4    | 7    | 6    | 6    | 7     | 7    | 7    |
| Part-Time                          | 1    | 0    | 0    | 0    | 1     | 1    | 0    |
| <b>Service/Maintenance:</b>        |      |      |      |      |       |      |      |
| Full-Time                          | 61   | 57   | 58   | 49   | 58    | 42   | 47   |
| Part-Time                          | 6    | 7    | 5    | 7    | 10    | 10   | 10   |
| <b>Total:</b>                      |      |      |      |      |       |      |      |
| Full-Time                          | 1750 | 1896 | 1997 | 1969 | 1981  | 2014 | 2142 |
| Part-Time                          | 184  | 175  | 205  | 182  | 235   | 234  | 239  |
| <b>Grand Total</b>                 | 1934 | 2071 | 2202 | 2151 | 2216  | 2248 | 2381 |

\*2005 shifts in categorization of employees due to internal reclassification and IPEDS reporting changes.

**Percentage of Institutional Staff  
Fall 2001 - Fall 2007**



| Fall           | 2001  | 2002  | 2003  | 2004  | 2005* | 2006  | 2007  |
|----------------|-------|-------|-------|-------|-------|-------|-------|
| <b>Staff</b>   | 56.5% | 55.8% | 54.8% | 56.0% | 58.9% | 58.7% | 59.2% |
| <b>Faculty</b> | 43.5% | 44.2% | 45.2% | 44.0% | 41.1% | 41.3% | 40.8% |

**Full-Time Faculty by Religious Affiliation  
Fall 2001 - Fall 2007**

| Fall                      | 2001       | 2002       | 2003       | 2004       | 2005       | 2006       | 2007       |
|---------------------------|------------|------------|------------|------------|------------|------------|------------|
| Assembly of God           | 1          | 1          | 1          | 1          | 1          | 1          | 2          |
| Baptist                   | 331        | 381        | 401        | 390        | 375        | 368        | 379        |
| Catholic                  | 48         | 61         | 73         | 78         | 79         | 81         | 87         |
| Church of Christ          | 16         | 21         | 20         | 20         | 18         | 22         | 23         |
| Disciples of Christ       | 13         | 14         | 15         | 14         | 11         | 11         | 12         |
| Episcopalian              | 47         | 51         | 53         | 52         | 54         | 56         | 60         |
| Lutheran                  | 40         | 41         | 46         | 46         | 47         | 46         | 51         |
| Methodist                 | 78         | 81         | 80         | 79         | 78         | 75         | 78         |
| Non-/Inter-Denominational | 16         | 17         | 17         | 21         | 24         | 24         | 28         |
| Presbyterian              | 46         | 49         | 50         | 51         | 49         | 54         | 59         |
| Other / Unspecified       | 61         | 60         | 64         | 62         | 60         | 66         | 72         |
| <b>Total</b>              | <b>697</b> | <b>777</b> | <b>820</b> | <b>814</b> | <b>796</b> | <b>804</b> | <b>851</b> |

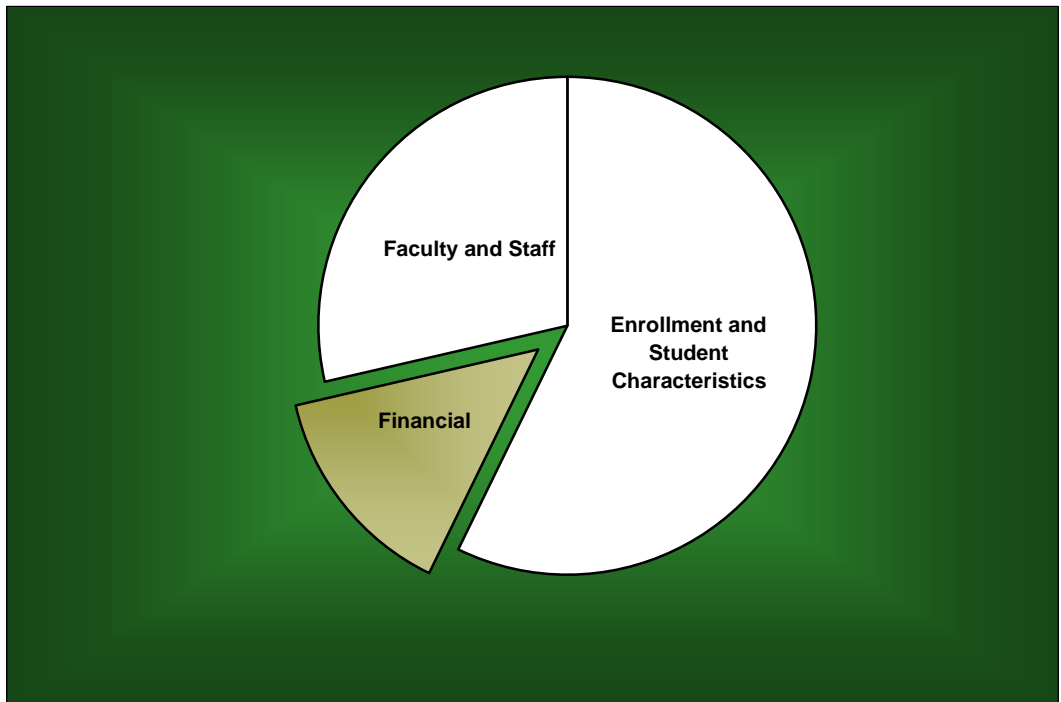
**Full-Time Staff by Religious Affiliation  
Fall 2001 - Fall 2007**

| Fall                     | 2001        | 2002        | 2003        | 2004        | 2005        | 2006        | 2007        |
|--------------------------|-------------|-------------|-------------|-------------|-------------|-------------|-------------|
| Assembly of God          | 7           | 7           | 11          | 10          | 9           | 8           | 9           |
| Baptist                  | 569         | 594         | 614         | 592         | 618         | 612         | 646         |
| Catholic                 | 100         | 110         | 112         | 117         | 108         | 117         | 128         |
| Church of Christ         | 35          | 37          | 34          | 33          | 35          | 36          | 36          |
| Disciples of Christ      | 18          | 20          | 21          | 19          | 18          | 16          | 13          |
| Episcopalian             | 17          | 26          | 26          | 30          | 26          | 21          | 25          |
| Lutheran                 | 40          | 36          | 35          | 35          | 35          | 40          | 40          |
| Methodist                | 109         | 110         | 115         | 109         | 110         | 117         | 124         |
| Non/Inter-Denominational | 20          | 42          | 58          | 64          | 63          | 81          | 98          |
| Presbyterian             | 25          | 28          | 25          | 22          | 27          | 33          | 36          |
| Other / Unspecified      | 85          | 80          | 100         | 95          | 96          | 98          | 104         |
| <b>Total</b>             | <b>1025</b> | <b>1090</b> | <b>1151</b> | <b>1126</b> | <b>1145</b> | <b>1179</b> | <b>1259</b> |



# ***Financial***

---



**Undergraduate Tuition and Other Semester Charges  
2001-02 through 2007-08**

|                                       | 2001-02  | 2002-03  | 2003-04  | 2004-05  | 2005-06  | 2006-07  | 2007-08  |
|---------------------------------------|----------|----------|----------|----------|----------|----------|----------|
| UG Grandfathered Tuition per Hour (8) | \$379.00 | \$405.00 | \$432.00 | \$461.00 | \$490.00 |          |          |
| Increase from Prior Year              | 6.8%     | 6.9%     | 6.7%     | 6.7%     | 6.3%     |          |          |
| UG Tuition per Semester Hour (9)      |          | \$654.00 | \$698.00 | \$746.00 | \$794.00 | \$857.00 | \$925.00 |
| Increase from Prior Year              |          |          | 6.7%     | 6.9%     | 6.4%     | 7.9%     | 7.9%     |
| UG Flat Tuition Rate (7)              |          | \$15,700 | \$16,750 | \$17,900 | \$19,050 | \$20,574 | \$22,220 |
| Increase from Prior Year              |          |          | 6.7%     | 6.9%     | 6.4%     | 8.0%     | 8.0%     |
| Application Fee (UG)                  | 35.00    | 35.00    | 35.00    | 35.00    | 50.00    | 50.00    | 50.00    |
| Applied Music Fee(1)                  | 117.00   | 125.00   | 133.00   | 142.00   | 151.00   | 163.00   | 175.00   |
| Change-of-Course Fee                  | 20.00    | 20.00    | 20.00    | 20.00    | 20.00    | 20.00    | 20.00    |
| Chapel-Forum Fee                      | 25.00    | 25.00    | 30.00    | 50.00    | 55.00    | 55.00    | 55.00    |
| Credit by Baylor Exam Fee             | 189.50   | 203.00   | 216.00   | 230.00   | 245.00   | 265.00   | 286.00   |
| General Student Fee                   | 590.00   | 625.00   | 690.00   | 745.00   | 800.00   | 1,070.00 | 1,135.00 |
| Enrollment Deposit (2)                | 100.00   | 100.00   | 100.00   | 100.00   | 100.00   | 100.00   | 100.00   |
| Lab/Course Fees (3)                   | 25.00    | 25.00    | 35.00    | 50.00    | 50.00    | 50.00    | 50.00    |
| Late Registration Fee (4)             | 20.00    | 20.00    | 20.00    | 30.00    | 50.00    | 50.00    | 50.00    |
| Student Life Fee                      | 1.00     | 0.00     | 0.00     | 0.00     | 0.00     | 0.00     | 0.00     |
| Technology Fee (10)                   | 101.00   | 107.00   | 150.00   | 195.00   | 210.00   | 0.00     | 0.00     |
| Vehicle Registration Fee (5)          | 175.00   | 175.00   | 175.00   | 175.00   | 175.00   | 175.00   | 175.00   |
| Room (Freshmen in Penland/Collins)    | 1,295.00 | 1,364.00 | 1,464.00 | 1,560.00 | 1,673.00 | 1,797.00 | 1,887.00 |
| Increase from Prior Year              | 15.2%    | 5.3%     | 7.3%     | 6.6%     | 7.2%     | 7.4%     | 5.0%     |
| Board (6)                             | 1,460.29 | 1,493.18 | 1,476.53 | 1,524.16 | 1,569.63 | 1,669.63 | 1,732.41 |
| Increase from Prior Year              | 5.6%     | 2.3%     | -1.1%    | 3.2%     | 3.0%     | 6.4%     | 3.8%     |

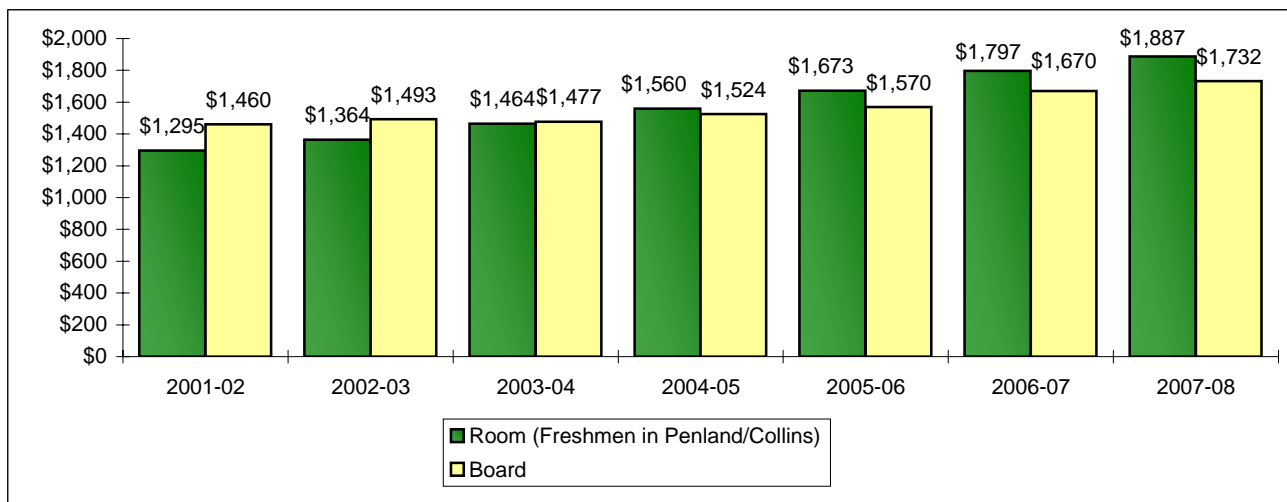
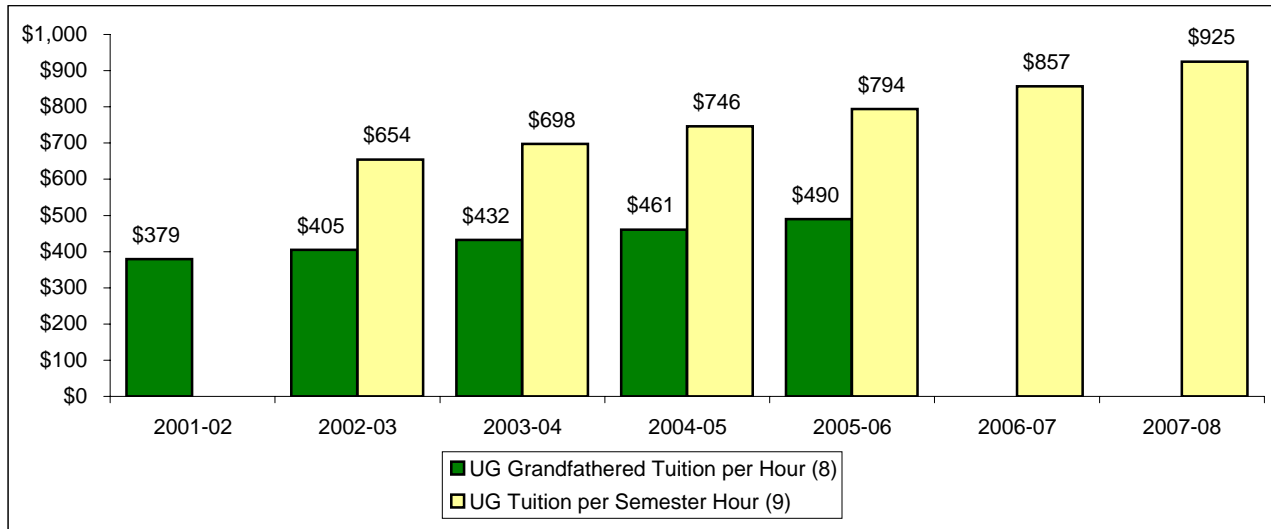
Increase in Semester Charges from 2002-03 to 2007-08:

|                            |       |
|----------------------------|-------|
| Tuition, per semester hour | 41.4% |
| Room                       | 38.3% |
| Board                      | 16.0% |

## Notes:

- (1) Supplemental charge per semester for one 30-minute lesson per week.
- (2) The Enrollment Deposit is paid to assure enrollment place and is applied on the student's first semester bill.
- (3) Minimum lab fee is noted; some courses may be higher.
- (4) Minimum charges are noted; charges vary.
- (5) Annual automobile fee (September - August).
- (6) For 1997-98 through 2000-2001, Board rate reflects the 20-meal plan, per semester, including tax. For 2001-02 through 2003-04, Board rate reflects the "Classic - 16 Plus Meal Plan," per semester, including tax. The 2003-04 through 2005-06 Board rate reflects the "Classic - 16 Meal Plan" but meal plan does not include BearBucks. The 2006-07 Board rate reflects the "Classic - 16 Meal Plan" + \$100 Dining Dollars. The 2007-08 Board rate reflects "The Works - 16 Meal Plan" + \$100 Dining Dollars.
- (7) Beginning in 2002-03, a flat tuition rate was instituted for new undergraduate students taking 12 or more hours per semester (Fall and Spring).
- (8) Beginning in 2002-03, the tuition per semester hour rate is applicable for students who were enrolled at Baylor prior to June 1, 2002 (grandfathered rate). The grandfathered tuition rate was discontinued after the 2005-06 fiscal year.
- (9) Tuition per semester hour for new students taking less than 12 hours.
- (10) Technology fee is now combined with General Student Fee.

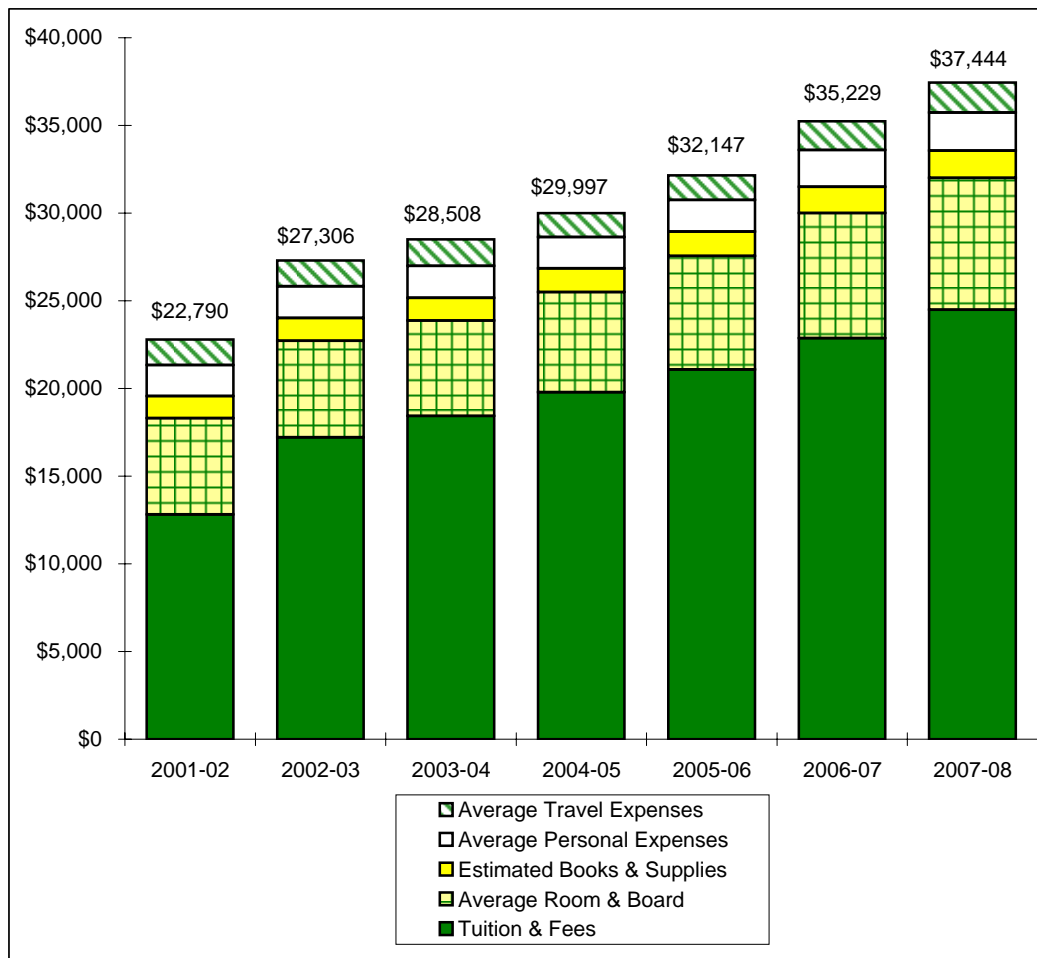
### Tuition, Room and Board Charges 2001-02 through 2007-08



See notes on page 28.

### Annual Undergraduate Student Cost Profile 2001-02 through 2007-08

|                                 | 2001-02         | 2002-03         | 2003-04         | 2004-05         | 2005-06         | 2006-07         | 2007-08         |
|---------------------------------|-----------------|-----------------|-----------------|-----------------|-----------------|-----------------|-----------------|
| Tuition & Fees                  | \$12,804        | \$17,214        | \$18,430        | \$19,780        | \$21,070        | \$22,869        | \$24,490        |
| Average Room & Board            | 5,494           | 5,514           | 5,434           | 5,713           | 6,485           | 7,125           | 7,526           |
| Estimated Books & Supplies      | 1,256           | 1,280           | 1,298           | 1,356           | 1,382           | 1,502           | 1,548           |
| Average Personal Expenses       | 1,772           | 1,806           | 1,832           | 1,778           | 1,813           | 2,108           | 2,172           |
| Average Travel Expenses         | 1,464           | 1,492           | 1,514           | 1,370           | 1,397           | 1,625           | 1,708           |
| <b>Average Total Cost</b>       | <b>\$22,790</b> | <b>\$27,306</b> | <b>\$28,508</b> | <b>\$29,997</b> | <b>\$32,147</b> | <b>\$35,229</b> | <b>\$37,444</b> |
| <b>Increase from Prior Year</b> | <b>11.2%</b>    | <b>19.8%</b>    | <b>4.4%</b>     | <b>5.2%</b>     | <b>7.2%</b>     | <b>9.6%</b>     | <b>6.3%</b>     |



Note: In 2002-03 a flat tuition rate was instituted for new students taking 12 or more hours per semester (Fall and Spring).

**Operating Funds  
2000-01 through 2006-07**

**Sources of Revenues**

|                       | 2000-01              | 2001-02              | 2002-03              | 2003-04              | 2004-05              | 2005-06              | 2006-07              |
|-----------------------|----------------------|----------------------|----------------------|----------------------|----------------------|----------------------|----------------------|
| Tuition & Fees        | \$161,790,383        | \$180,194,091        | \$205,208,253        | \$228,672,157        | \$253,947,979        | \$286,798,199        | \$313,899,972        |
| Gifts/Private Grants  | 10,081,101           | 6,107,120            | 4,915,658            | 3,957,986            | 4,106,405            | 4,667,051            | 4,954,597            |
| BGCT Appropriation    | 4,022,186            | 3,822,637            | 3,846,290            | 3,832,014            | 3,721,275            | 3,517,856            | 3,504,658            |
| Endowment Income      | 15,075,011           | 13,698,822           | 17,771,203           | 21,035,555           | 22,429,350           | 22,661,361           | 23,424,913           |
| Investment Income     | 3,772,096            | 1,635,000            | 919,715              | 635,674              | 1,333,628            | 3,913,218            | 6,053,815            |
| Other Sources         | 11,459,110           | 12,921,478           | 12,434,554           | 13,900,817           | 15,406,112           | 14,707,559           | 17,042,155           |
| Auxiliary Enterprises | 39,285,440           | 40,185,133           | 39,019,089           | 37,156,315           | 40,774,330           | 45,675,394           | 46,691,476           |
| <b>Total Revenues</b> | <b>\$245,485,327</b> | <b>\$258,564,281</b> | <b>\$284,114,762</b> | <b>\$309,190,518</b> | <b>\$341,719,079</b> | <b>\$381,940,638</b> | <b>\$415,571,586</b> |

**Sources of Revenues as a Percentage of Total Revenues**

|                       | 2000-01       | 2001-02       | 2002-03       | 2003-04       | 2004-05       | 2005-06       | 2006-07       |
|-----------------------|---------------|---------------|---------------|---------------|---------------|---------------|---------------|
| Tuition & Fees        | 65.9%         | 69.7%         | 72.1%         | 73.9%         | 74.4%         | 75.2%         | 75.6%         |
| Gifts/Private Grants  | 4.1%          | 2.4%          | 1.7%          | 1.3%          | 1.2%          | 1.2%          | 1.2%          |
| BGCT Appropriation    | 1.6%          | 1.5%          | 1.4%          | 1.2%          | 1.1%          | 0.9%          | 0.8%          |
| Endowment Income      | 6.2%          | 5.3%          | 6.3%          | 6.8%          | 6.6%          | 5.9%          | 5.6%          |
| Investment Income     | 1.5%          | 0.6%          | 0.3%          | 0.2%          | 0.4%          | 1.0%          | 1.5%          |
| Other Sources         | 4.7%          | 5.0%          | 4.4%          | 4.5%          | 4.5%          | 3.9%          | 4.1%          |
| Auxiliary Enterprises | 16.0%         | 15.5%         | 13.7%         | 11.9%         | 11.8%         | 12.0%         | 11.2%         |
| <b>Total Revenues</b> | <b>100.0%</b> | <b>100.0%</b> | <b>100.0%</b> | <b>100.0%</b> | <b>100.0%</b> | <b>100.0%</b> | <b>100.0%</b> |

**Operating Funds (Continued)**  
**2000-01 through 2006-07**

**Expenditures by Function**

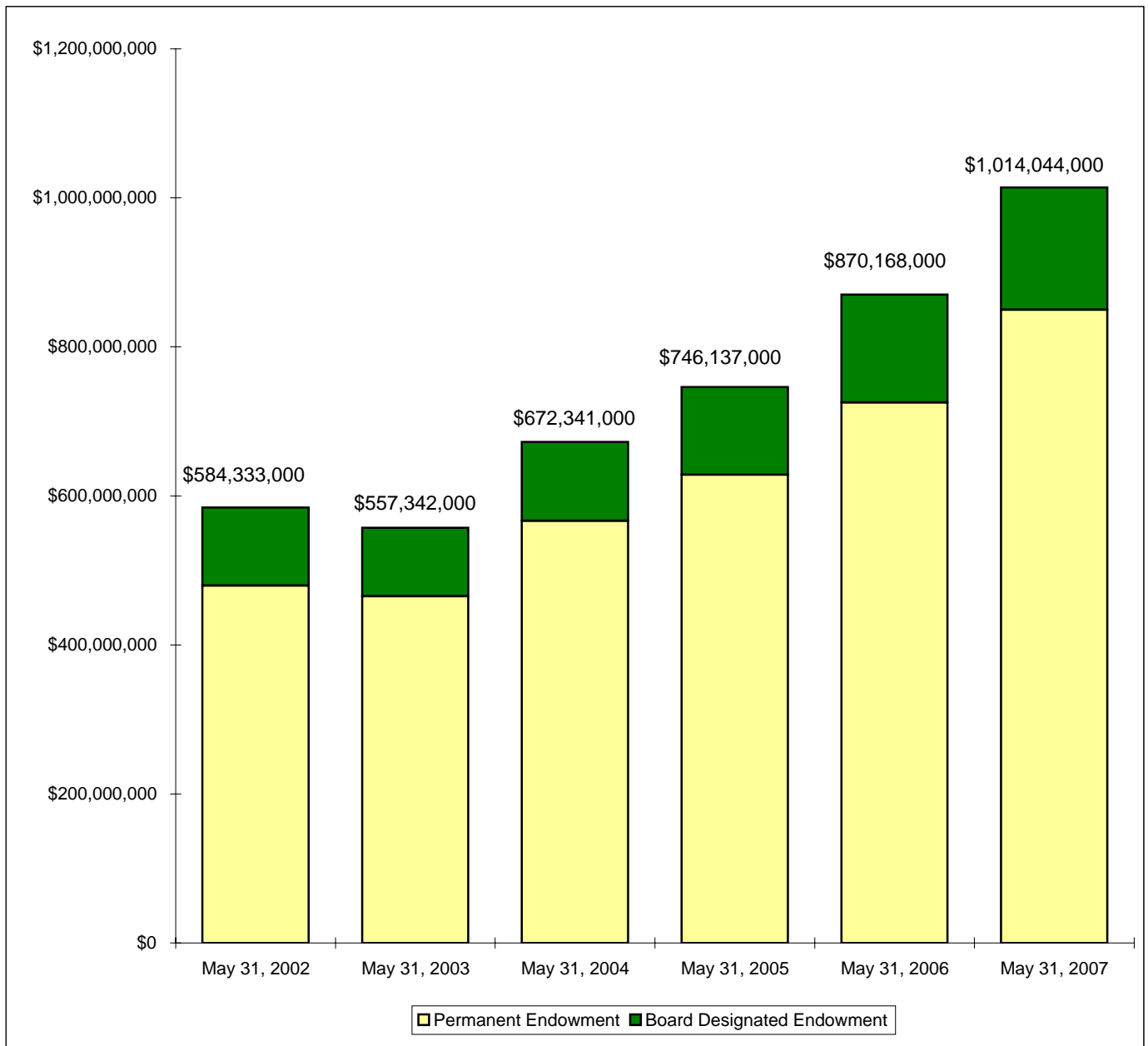
|                             | 2000-01      | 2001-02      | 2002-03       | 2003-04       | 2004-05       | 2005-06       | 2006-07       |
|-----------------------------|--------------|--------------|---------------|---------------|---------------|---------------|---------------|
| Instruction                 | \$82,621,971 | \$92,355,519 | \$102,617,463 | \$109,586,442 | \$113,783,712 | \$114,841,749 | \$128,567,485 |
| Acad Support/Research/PS    | 20,363,667   | 23,117,511   | 24,666,809    | 24,957,815    | 25,637,473    | 26,511,262    | 28,969,003    |
| Student Services            | 11,798,452   | 12,849,698   | 14,779,593    | 15,177,946    | 19,276,167    | 19,926,881    | 20,460,020    |
| Plant Operation/Maintenance | 16,020,525   | 19,608,685   | 22,537,742    | 33,373,695    | 36,228,820    | 39,746,168    | 50,405,094    |
| Institutional Support       | 28,859,740   | 35,095,190   | 37,986,315    | 37,244,481    | 37,977,656    | 42,191,169    | 41,187,651    |
| Scholarships & Fellowships  | 21,932,892   | 27,598,589   | 37,529,834    | 47,065,860    | 58,837,752    | 72,429,465    | 78,291,693    |
| Auxiliary Enterprises       | 42,264,498   | 45,428,872   | 46,541,207    | 43,784,647    | 45,499,135    | 51,076,247    | 53,951,060    |
| Discretionary Transfers     | 21,600,154   | 2,497,935    | (2,560,253)   | (2,018,647)   | 4,469,901     | 15,206,432    | 13,692,811    |
| <b>Total Expenditures</b>   | 245,461,899  | 258,551,999  | 284,098,710   | 309,172,239   | 341,710,616   | 381,929,373   | 415,524,817   |
| <b>Excess Revenues</b>      | \$23,428     | \$12,282     | \$16,052      | \$18,279      | \$8,463       | \$11,265      | \$46,769      |

**Percentage of Total Expenditures**

|                             | 2000-01 | 2001-02 | 2002-03 | 2003-04 | 2004-05 | 2005-06 | 2006-07 |
|-----------------------------|---------|---------|---------|---------|---------|---------|---------|
| Instruction                 | 33.7%   | 35.7%   | 36.1%   | 35.4%   | 33.3%   | 30.1%   | 30.9%   |
| Gifts/Private Grants        | 8.3%    | 8.9%    | 8.7%    | 8.1%    | 7.5%    | 6.9%    | 7.0%    |
| Student Services            | 4.8%    | 5.0%    | 5.2%    | 4.9%    | 5.6%    | 5.2%    | 4.9%    |
| Plant Operation/Maintenance | 6.5%    | 7.6%    | 7.9%    | 10.8%   | 10.6%   | 10.4%   | 12.1%   |
| Institutional Support       | 11.8%   | 13.6%   | 13.4%   | 12.0%   | 11.1%   | 11.0%   | 9.9%    |
| Scholarships & Fellowships  | 8.9%    | 10.7%   | 13.2%   | 15.2%   | 17.2%   | 19.0%   | 18.8%   |
| Auxiliary Enterprises       | 17.2%   | 17.6%   | 16.4%   | 14.2%   | 13.3%   | 13.4%   | 13.0%   |
| Discretionary Transfers     | 8.8%    | 1.0%    | -0.9%   | -0.7%   | 1.3%    | 4.0%    | 3.3%    |
| <b>Total Expenditures</b>   | 100.0%  | 100.0%  | 100.0%  | 100.0%  | 100.0%  | 100.0%  | 100.0%  |

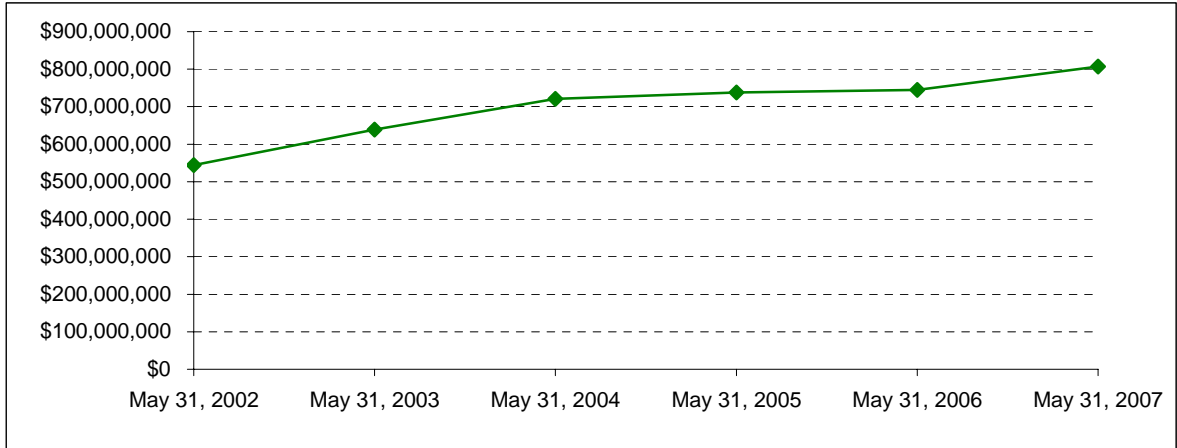
**Endowment Fund Balance - Market Value  
May 31, 2002 through May 31, 2007**

|                            | May 31, 2002         | May 31, 2003         | May 31, 2004         | May 31, 2005         | May 31, 2006         | May 31, 2007           |
|----------------------------|----------------------|----------------------|----------------------|----------------------|----------------------|------------------------|
| Permanent Endowment        | \$479,728,000        | \$465,189,000        | \$566,655,000        | \$628,503,000        | \$725,266,000        | \$849,855,000          |
| Board Designated Endowment | 104,605,000          | 92,153,000           | 105,686,000          | 117,634,000          | 144,902,000          | 164,189,000            |
| <b>Total Endowment</b>     | <b>\$584,333,000</b> | <b>\$557,342,000</b> | <b>\$672,341,000</b> | <b>\$746,137,000</b> | <b>\$870,168,000</b> | <b>\$1,014,044,000</b> |
| Permanent Endowment        | 82.1%                | 83.5%                | 84.3%                | 84.2%                | 83.3%                | 83.8%                  |
| Board Designated Endowment | 17.9%                | 16.5%                | 15.7%                | 15.8%                | 16.7%                | 16.2%                  |
| <b>Total Endowment</b>     | <b>100.0%</b>        | <b>100.0%</b>        | <b>100.0%</b>        | <b>100.0%</b>        | <b>100.0%</b>        | <b>100.0%</b>          |



**Property, Plant and Equipment\***  
**May 31, 2002 through May 31, 2007**

| Property, Plant & Equipment | May 31, 2002  | May 31, 2003  | May 31, 2004  | May 31, 2005  | May 31, 2006  | May 31, 2007  |
|-----------------------------|---------------|---------------|---------------|---------------|---------------|---------------|
|                             | \$544,541,000 | \$638,914,000 | \$720,816,000 | \$738,186,000 | \$745,063,000 | \$806,781,000 |



\*Does not reflect the impact of accumulated depreciation.

\*The May 31, 2006 figure for Property, Plant & Equipment was changed in 2007 from \$744,986,000 to \$745,063,000.

**Assets**  
**May 31, 2002 through May 31, 2007**

|              | May 31, 2002    | May 31, 2003    | May 31, 2004    | May 31, 2005    | May 31, 2006    | May 31, 2007    |
|--------------|-----------------|-----------------|-----------------|-----------------|-----------------|-----------------|
| Net Assets   | \$899,185,000   | \$850,735,000   | \$989,916,000   | \$1,059,904,000 | \$1,230,176,000 | \$1,408,848,000 |
| Total Assets | \$1,238,399,000 | \$1,230,551,000 | \$1,363,089,000 | \$1,426,295,000 | \$1,638,403,000 | \$1,831,511,000 |

