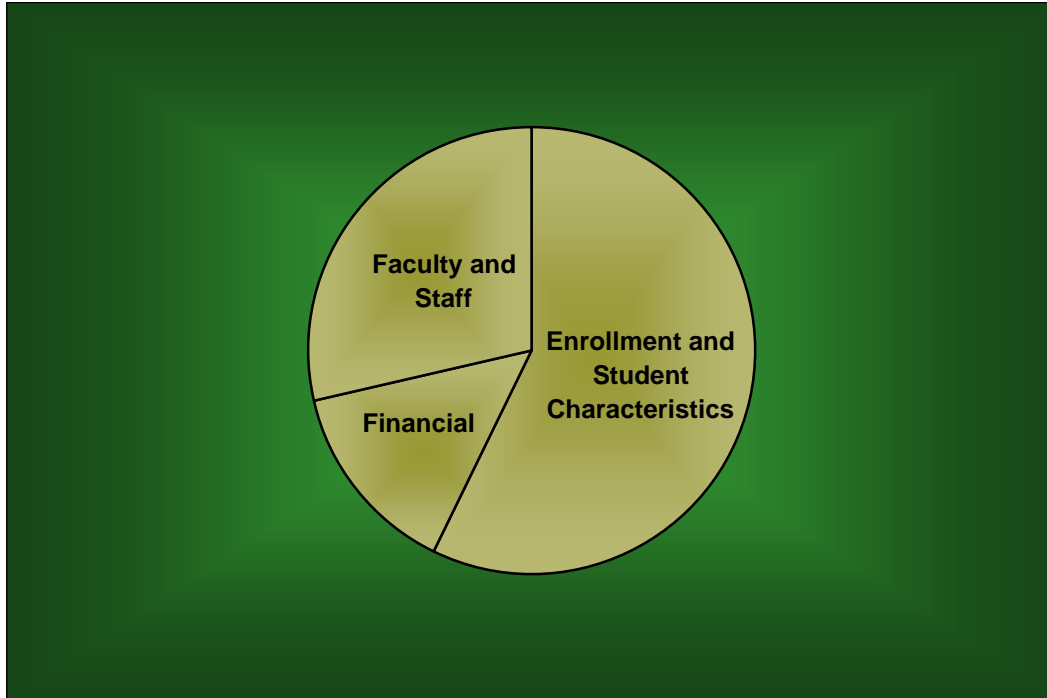


BAYLOR TRENDS



Fall 2000 - Fall 2006

Volume XVIII

Prepared by the Office of Institutional Research and Testing, Spring 2007

<http://www.baylor.edu/irt/>

Table of Contents

	Page
ENROLLMENT AND STUDENT CHARACTERISTICS	
<i>New Freshman Applications and Enrollment</i>	1
<i>Transfer Applications and Enrollment</i>	1
<i>New Freshman Applications and Enrollment by Gender</i>	2
<i>New Freshman and Transfer Student Enrollment</i>	3
<i>Enrollment by Classification</i>	4
<i>Enrollment</i>	5
<i>Enrollment by Gender, Waco Campus</i>	6
<i>Enrollment by Religious Affiliation, Waco Campus</i>	7
<i>Baptist Percentage, Waco Campus</i>	7
<i>Enrollment by Racial/Ethnic Group</i>	8
<i>Racial/Ethnic Minority Percentage</i>	8
<i>Leading Texas Counties of Origin</i>	9
<i>Leading States of Origin</i>	9
<i>Percentage from Top Four Texas Counties</i>	10
<i>Students from Texas by Three-Digit Zip Code Area</i>	10
<i>Texas Enrollment by County</i>	11
<i>Enrollment by State</i>	12
<i>Countries Represented by Nonresident Aliens</i>	13
<i>Enrollment by Unit</i>	14
<i>Enrollment Percentage by Unit</i>	15
<i>Student Credit Hours by Unit, Waco Campus</i>	16
<i>Retention of First-Time Freshman Classes</i>	17
<i>Distribution of Degrees</i>	18
<i>Summary of Degrees Awarded</i>	19
<i>Degree Programs</i>	20
FACULTY AND STAFF	
<i>Full-Time Faculty Positions</i>	22
<i>Highest Degree Earned by Full-Time Faculty</i>	22
<i>Percentage of Full-Time Faculty with Tenure</i>	23
<i>Average Salaries of Full-Time Instructional Faculty on Academic Year Contracts</i>	24
<i>Average Compensation of Full-Time Instructional Faculty on Academic Year Contracts</i>	25
<i>Institutional Staff</i>	26
<i>Percentage of Institutional Staff</i>	26
<i>Full-Time Faculty by Religious Affiliation</i>	27
<i>Full-Time Staff by Religious Affiliation</i>	27

FINANCIAL

Undergraduate Tuition and Other Semester Charges 28

Undergraduate Tuition, Room and Board Charges..... 29

Annual Undergraduate Student Cost Profile..... 30

Operating Funds:

Sources of Revenues..... 31

Sources of Revenue as a Percentage of Total Revenues..... 31

Expenditures by Functions..... 32

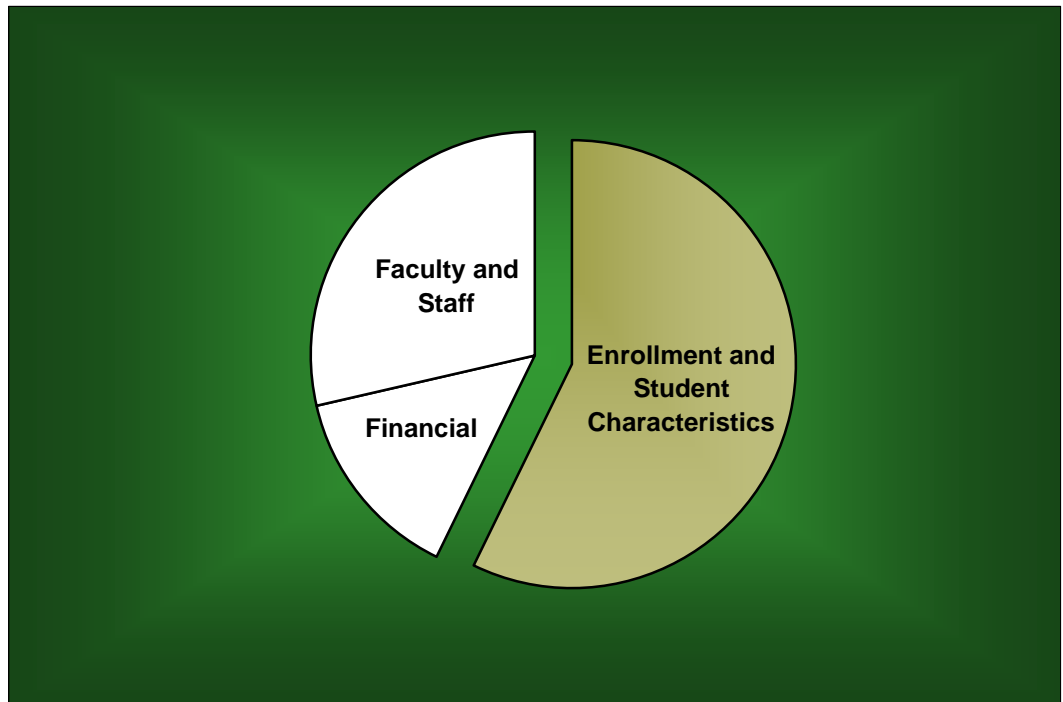
Expenditures by Functions as a Percentage of Total Expenditures 32

Endowment Fund Balance - Market Value..... 33

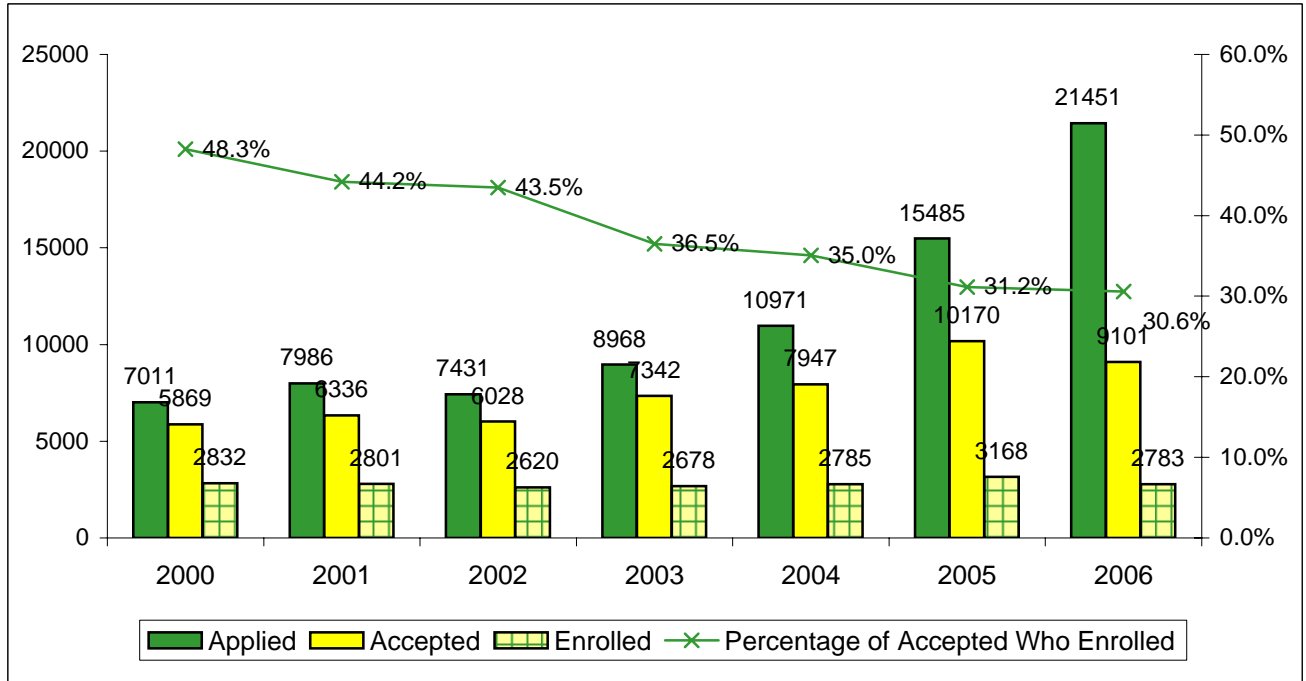
Property, Plant and Equipment 34

Assets 34

Enrollment and Student Characteristics

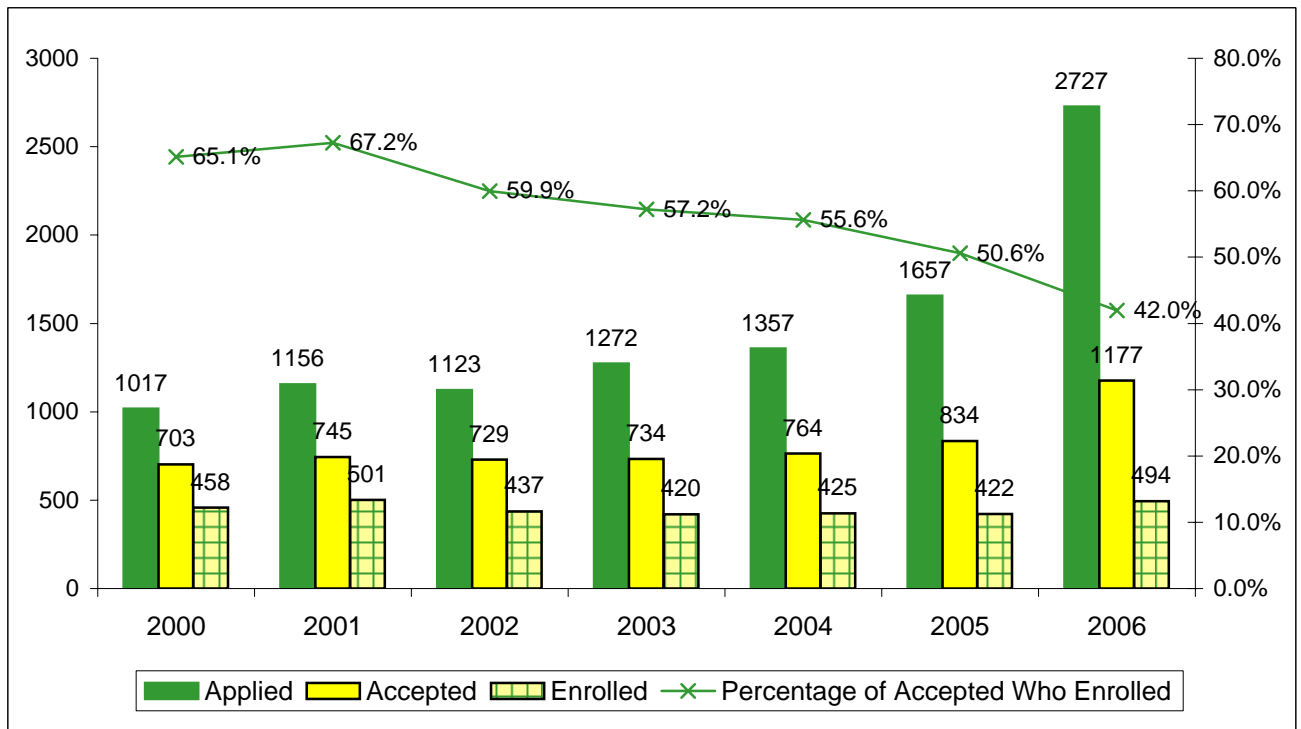


**New Freshman Applications, Acceptances and Enrollment
Fall 2000 - Fall 2006**

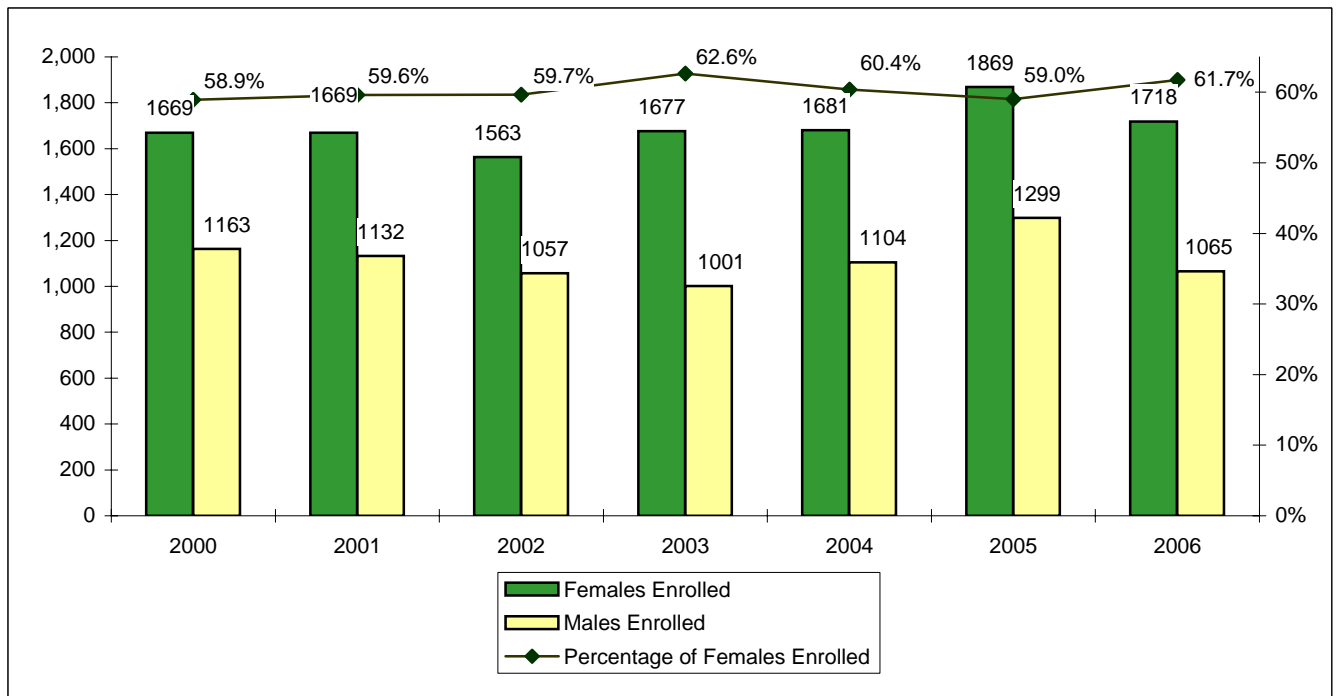
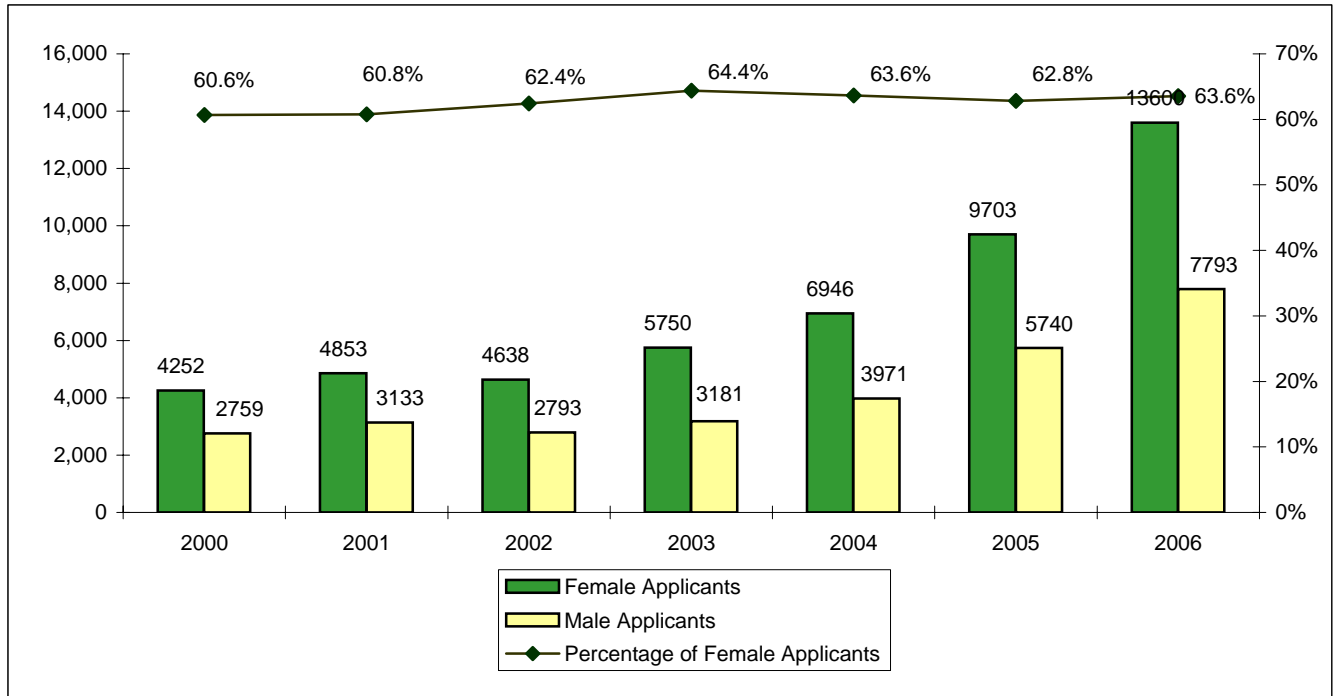


*11-07-07 Corrected number of accepted for 2005 and 2006.

**Transfer Applications, Acceptances and Enrollment
Fall 2000 - Fall 2006**

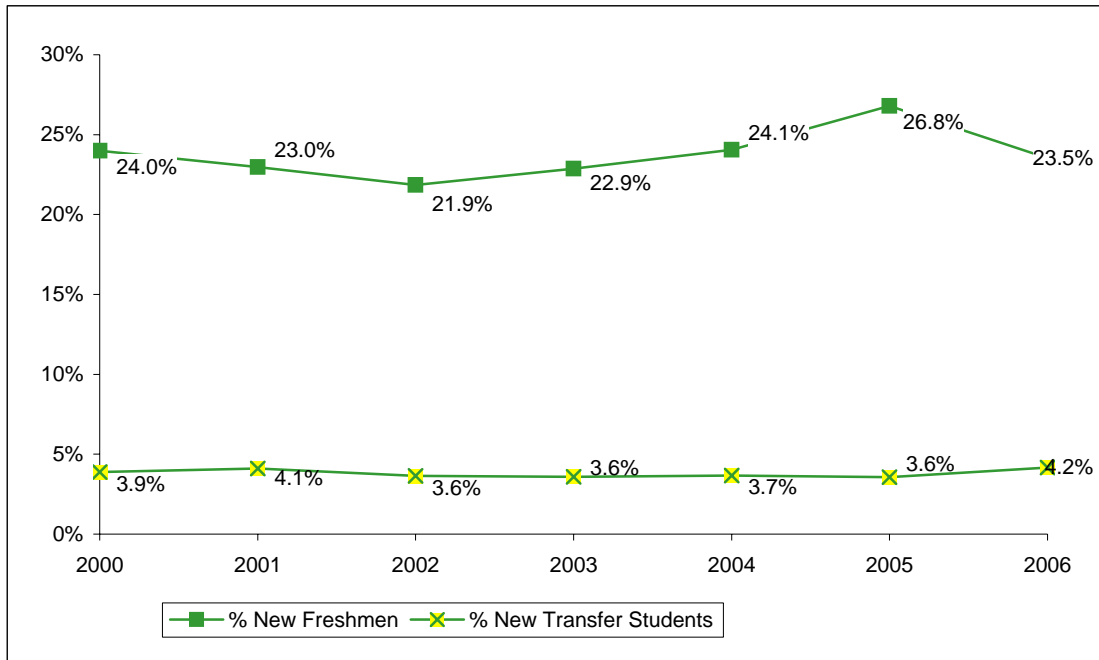


New Freshman Applications and Enrollment by Gender*
Fall 2000 - Fall 2006



*Totals of male and female applicants may not equal the total applicants displayed on the previous page, because there are some applicants who do not provide their gender.

**New Freshman and Transfer Student Enrollment
Fall 2000 - Fall 2006**



	Fall	2000	2001	2002	2003	2004	2005	2006
New Freshmen		2,832	2,801	2,620	2,678	2,785	3,168	2,783
New Transfer Students		458	501	437	420	425	422	494
Undergraduate Enrollment		11,806	12,190	11,987	11,712	11,580	11,825	11,831
% New Freshmen		24.0%	23.0%	21.9%	22.9%	24.1%	26.8%	23.5%
% New Transfer Students		3.9%	4.1%	3.6%	3.6%	3.7%	3.6%	4.2%

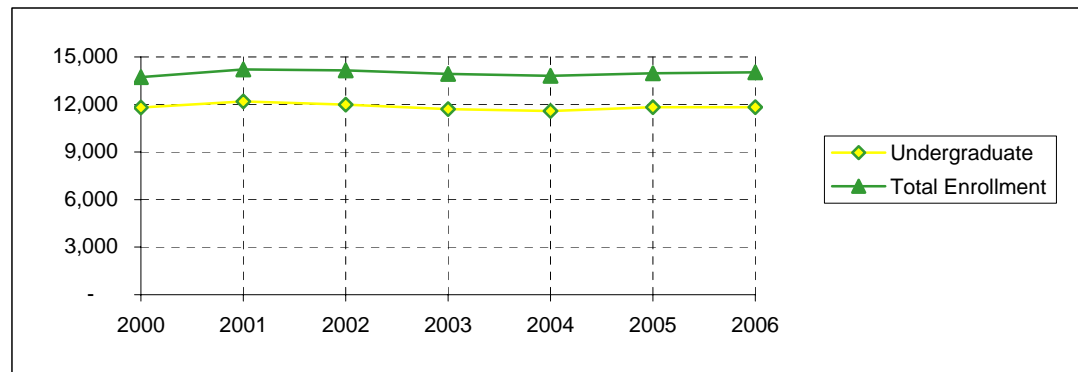
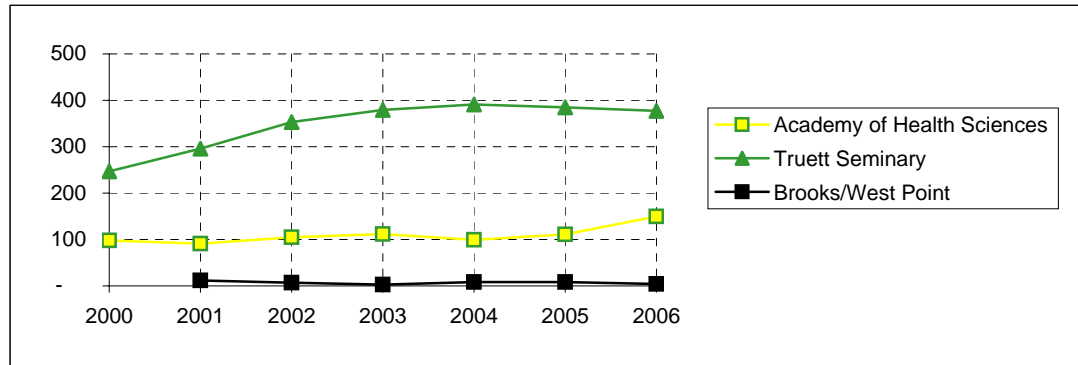
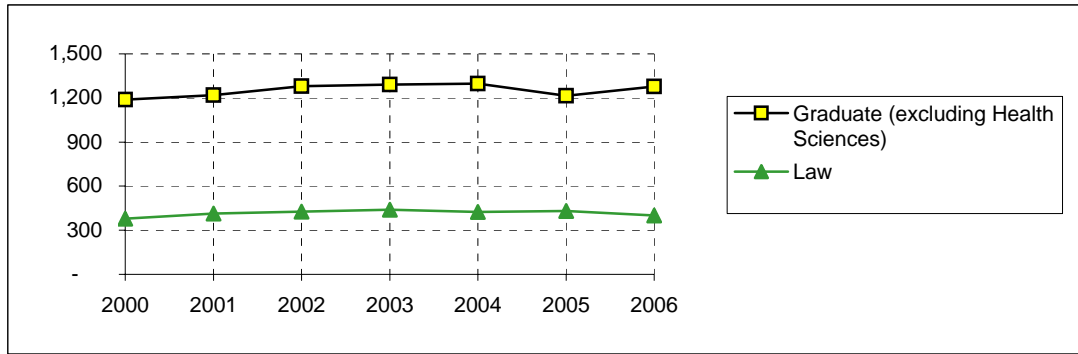
Notes:

1. Freshmen who enter the University in the fall or preceding summer term are counted as "new freshmen." Similarly, transfer students entering in the fall or preceding summer term are counted as "transfer students" for the fall semester.
2. "Transfer students" refers to the entering summer/fall group of transfer students. For example, in Fall 2003 the 420 entering transfer students comprised 3.6% of the 11,712 undergraduates. However, for Fall 2003 the total number of enrolled undergraduates who had transferred into the University consisted of (a) transfers who entered in Fall 2003 and (b) students who transferred into the University in previous academic years. Generally, the total enrollment of students who had entered as transfer students is approximately 15% of the undergraduate student body.

**Enrollment by Classification
Fall 2000 - Fall 2006**

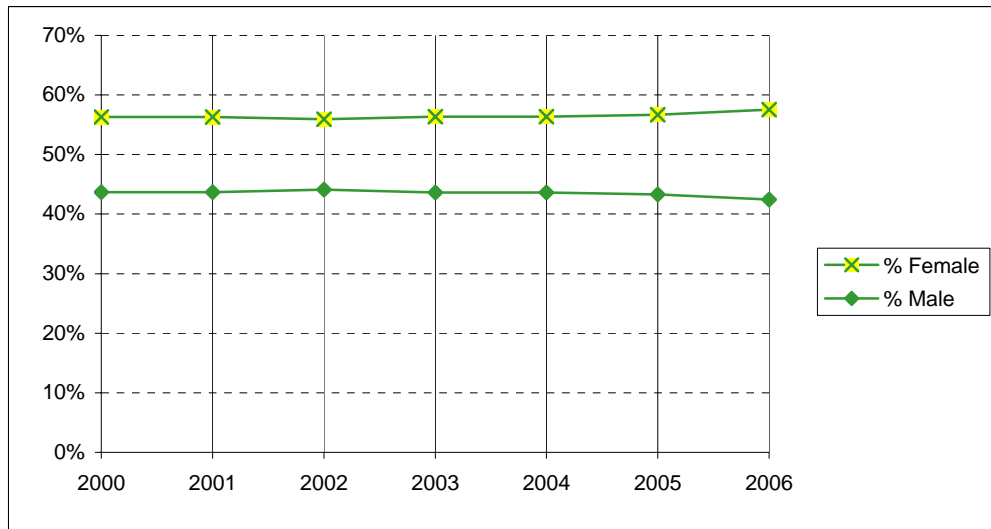
Fall	2000	2001	2002	2003	2004	2005	2006
Freshman	3,678	3,613	3,309	3,382	3,430	3,791	3,524
Sophomore	2,565	2,686	2,679	2,506	2,391	2,529	2,833
Junior	2,516	2,565	2,595	2,462	2,425	2,295	2,481
Senior	2,916	3,194	3,297	3,262	3,223	3,080	2,896
Special	26	23	22	-	-	-	-
Postbaccalaureate	105	109	85	43	79	84	69
Nondegree	-	-	-	57	32	46	28
TOTAL UNDERGRADUATE	11,806	12,190	11,987	11,712	11,580	11,825	11,831
Master's	788	802	843	845	834	720	778
Doctoral	379	397	416	427	445	473	473
Graduate Transient/Nondegree	6	11	10	10	7	10	9
Special Graduate	8	-	-	-	-	-	-
Graduate Professional	8	9	12	9	11	11	18
TOTAL "WACO" GRADUATE	1,189	1,219	1,281	1,291	1,297	1,214	1,278
Seminary Master's	222	260	318	337	345	344	334
Seminary Doctoral	25	34	35	41	43	39	42
Seminary Nondegree	-	2	-	1	3	2	1
TOTAL SEMINARY	247	296	353	379	391	385	377
School of Law	379	413	426	440	424	432	400
Academy of Health Sciences	98	91	105	112	99	111	150
Brooks/West Point	-	12	7	3	8	8	4
TOTAL ENROLLMENT	13,719	14,221	14,159	13,937	13,799	13,975	14,040

**Enrollment
Fall 2000 - Fall 2006**



Fall	2000	2001	2002	2003	2004	2005	2006
Undergraduate	11,806	12,190	11,987	11,712	11,580	11,825	11,831
Graduate (excluding Health Sciences)	1,189	1,219	1,281	1,291	1,297	1,214	1,278
Law	379	413	426	440	424	432	400
Truett Seminary	247	296	353	379	391	385	377
SUBTOTAL	13,621	14,118	14,047	13,822	13,692	13,856	13,886
Academy of Health Sciences	98	91	105	112	99	111	150
Brooks/West Point		12	7	3	8	8	4
TOTAL ENROLLMENT	13,719	14,221	14,159	13,937	13,799	13,975	14,040

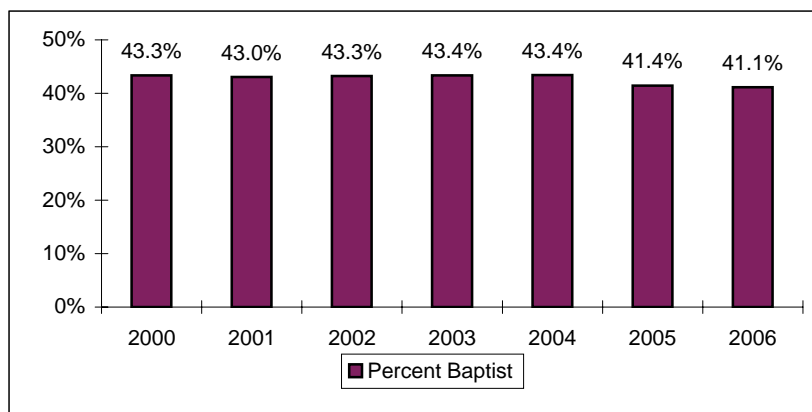
**Enrollment by Gender
(Excluding Health Sciences)
Fall 2000 - Fall 2006**



	Fall	2000	2001	2002	2003	2004	2005	2006
Female		7,670	7,950	7,854	7,790	7,717	7,854	7,990
Male		5,951	6,168	6,193	6,032	5,975	6,002	5,896
Total (excluding Health Sciences)		13,621	14,118	14,047	13,822	13,692	13,856	13,886
% Female		56.3%	56.3%	55.9%	56.4%	56.4%	56.7%	57.5%
% Male		43.7%	43.7%	44.1%	43.6%	43.6%	43.3%	42.5%

Enrollment by Religious Affiliation (Excluding Health Sciences)
Fall 2000 - Fall 2006

Fall	2000	2001	2002	2003	2004	2005	2006
African Methodist Episcopal	-	-	-	1	4	7	5
Anglican - Church of England	-	-	-	-	7	11	9
Assembly of God	135	135	124	125	136	130	129
Atheist	-	-	-	-	14	16	22
Baptist	5903	6076	6076	5994	5941	5738	5710
Buddhist	70	77	71	60	77	76	79
Catholic	1674	1694	1659	1591	1765	1833	1788
Christian Church	-	-	-	16	59	84	86
Christian Scientist	2	10	13	12	16	15	15
Church of Christ	287	279	283	253	269	257	259
Church of God	19	25	21	29	29	27	29
Church of the Nazarene	27	28	25	33	37	28	34
Congregational Church	16	23	23	21	19	17	14
Disciples of Christ (Christian)	88	73	70	76	80	86	91
Dutch Reformed	-	-	-	-	-	2	4
Eastern Orthodox	29	31	32	35	32	35	37
Episcopalian	310	307	294	249	251	256	262
Evangelical Free Church	-	-	-	3	12	25	36
Four Square Gospel	10	9	10	11	11	12	10
Full Gospel	-	-	-	-	2	4	3
Greek Orthodox	-	-	-	4	6	7	5
Hindu	83	88	85	89	105	115	103
Independent Bible Church	-	-	-	1	12	19	21
Interdenominational	466	460	477	380	266	167	98
Jehovah's Witness	12	11	10	12	10	11	8
Jewish	-	-	-	-	9	11	11
Judaism	9	17	14	22	23	21	14
Latter Day Saints (Mormon)	21	19	23	23	36	48	39
Lutheran	396	386	388	354	343	364	371
Mennonite	7	5	6	7	10	10	5
Methodist	1203	1251	1280	1219	1133	1099	1074
Missionary Alliance	-	-	-	1	2	2	5
Moslem (Islam, Muslim)	86	100	109	109	119	117	133
Non-Denominational	102	251	270	567	1054	1444	1703
Pentecostal	88	106	115	107	100	112	99
Presbyterian	552	571	534	536	549	549	569
Protestant	-	-	-	3	27	54	53
Seventh Day Adventist	-	-	-	2	11	12	11
Society of Friends (Quakers)	4	4	3	1	2	3	2
Unitarian	9	8	6	7	6	4	3
United Brethren	6	4	4	3	-	2	2
United Church of Christ	-	-	-	-	2	6	5
Other/Not Specified	2007	2070	2022	1866	1106	1020	930
TOTAL RELIGION	13621	14118	14047	13822	13692	13856	13886



**Enrollment by Racial / Ethnic Group*
Fall 2000 - Fall 2006**

A.

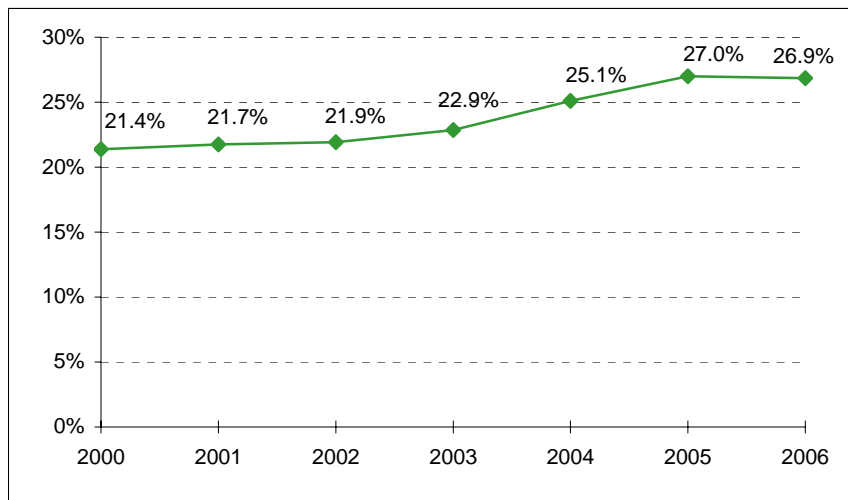
	Fall	2000	2001	2002	2003	2004	2005	2006
African American/Black		750	774	771	862	944	1,048	1,036
American Indian/Alaskan Native		64	63	75	83	80	93	88
Asian/Pacific Islander		876	903	883	865	977	1,044	1,050
Hispanic		967	1,051	1,078	1,077	1,133	1,284	1,301
White		10,671	11,033	10,919	10,541	10,318	10,183	10,249
Other		276	301	296	300	330	304	295
Not Specified		115	96	137	209	17	19	21
Total		13,719	14,221	14,159	13,937	13,799	13,975	14,040

B.

	Fall	2000	2001	2002	2003	2004	2005	2006
African American/Black		733	753	744	835	908	1,001	990
American Indian/Alaskan Native		64	63	75	82	79	92	88
Asian/Pacific Islander		664	669	660	666	770	846	857
Hispanic		939	1,017	1,045	1,040	1,094	1,237	1,256
White		10,612	10,967	10,854	10,476	10,248	10,128	10,183
Other		237	258	250	256	286	264	257
Not Specified		108	91	125	184	17	19	20
NONRESIDENT ALIEN		362	403	406	398	397	388	389
Total		13,719	14,221	14,159	13,937	13,799	13,975	14,040

*In Table B, nonresident aliens are partitioned as a group.

**Racial / Ethnic Minority Percentage
Fall 2000 - Fall 2006
(From Table A)**



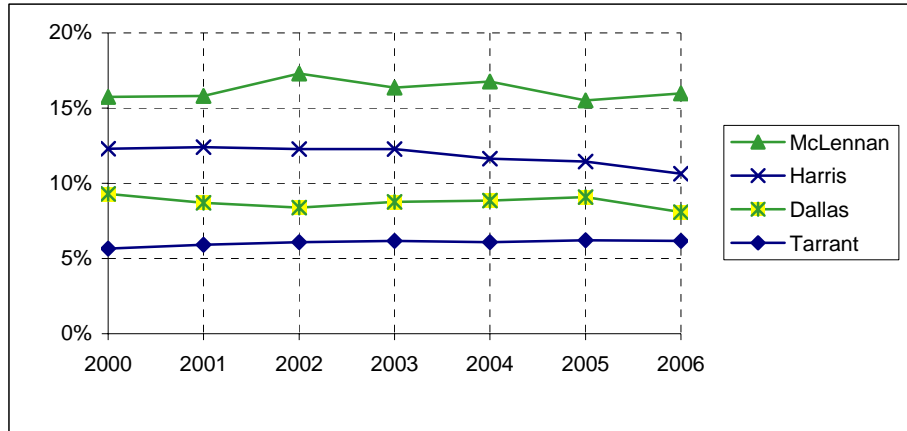
**Leading Texas Counties of Origin
Fall 2000 - Fall 2006**

Fall	2000	2001	2002	2003	2004	2005	2006
McLennan	2,161	2,248	2,448	2,279	2,315	2,169	2,242
Harris	1,687	1,763	1,738	1,711	1,605	1,599	1,494
Dallas	1,276	1,238	1,188	1,221	1,222	1,271	1,134
Tarrant	777	840	863	860	840	868	867
Bexar	532	521	475	438	464	486	507
Collin	489	505	490	459	457	481	582
Travis	304	326	331	372	385	405	410
Fort Bend	299	331	332	315	318	332	358
Montgomery	253	273	266	269	263	298	283
Bell	206	237	204	204	199	215	210
Williamson	125	138	154	171	197	201	220
Denton	131	136	160	171	180	196	270
Smith	123	149	147	138	146	151	150
Galveston	119	117	119	102	109	108	109
Gregg	141	144	135	145	111	106	97
El Paso	105	97	93	85	95	100	109
Brazoria	90	117	115	115	99	97	100
Hidalgo	81	79	85	83	90	96	88
Nueces	89	98	88	83	71	89	71
Jefferson	88	83	78	71	87	88	81
Rockwall	42	48	41	72	74	84	69
Johnson	76	89	75	74	65	68	64
Ellis	60	58	75	57	61	68	69
Taylor	94	102	100	79	84	65	62

**Leading States of Origin
Fall 2000 - Fall 2006**

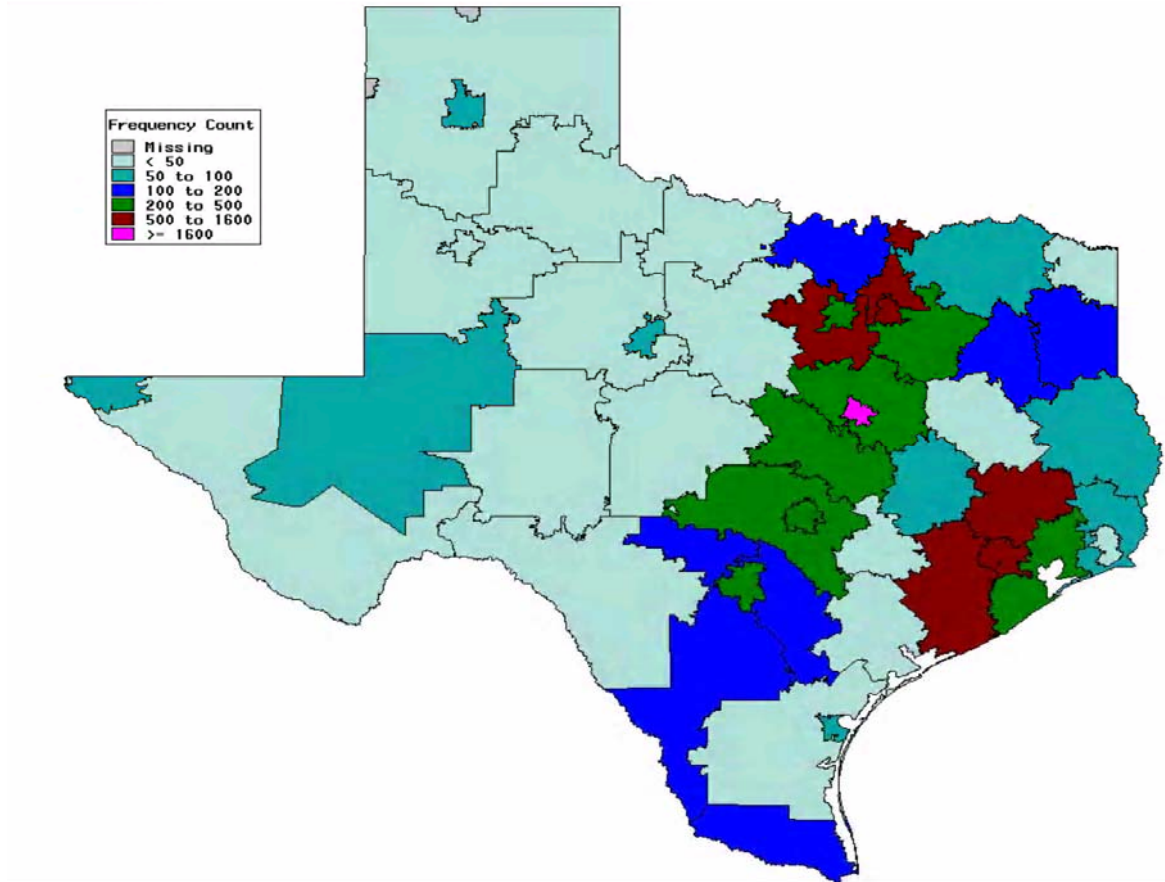
Fall	2000	2001	2002	2003	2004	2005	2006
Texas	11,128	11,553	11,613	11,316	11,233	11,349	11,316
California	250	246	227	238	255	252	269
Oklahoma	218	221	204	186	184	177	170
Louisiana	144	163	156	145	136	145	152
Colorado	134	138	137	129	132	145	143
Illinois	80	88	87	103	97	105	117
Arkansas	118	132	129	133	122	105	99
Florida	77	67	53	60	80	88	97
Missouri	114	111	110	121	101	100	97
Kansas	111	110	96	84	84	91	93
Tennessee	84	74	72	67	65	66	80
Arizona	57	61	57	56	62	81	79
Georgia	52	52	41	46	58	63	73
New Mexico	63	76	69	68	70	66	69

Percentage From Top Four Texas Counties
Fall 2000 - Fall 2006



Fall	2000	2001	2002	2003	2004	2005	2006
McLennan	15.8%	15.8%	17.3%	16.4%	16.8%	15.5%	16.0%
Harris	12.3%	12.4%	12.3%	12.3%	11.6%	11.4%	10.6%
Dallas	9.3%	8.7%	8.4%	8.8%	8.9%	9.1%	8.1%
Tarrant	5.7%	5.9%	6.1%	6.2%	6.1%	6.2%	6.2%

Students From Texas by Three-Digit Zip Code Area
Fall 2000 - Fall 2006



**Texas Enrollment by County
Fall 2006**

	n		n		n		n		n
Anderson	12	Crane	1	Hartley	1	Madison	5	San Patricio	14
Andrews	1	Crockett	1	Haskell	2	Marion	3	San Saba	4
Angelina	19	Crosby	0	Hays	40	Martin	0	Schleicher	1
Aransas	2	Culberson	1	Hemphill	0	Mason	0	Scurry	2
Archer	2	Dallam	0	Henderson	19	Matagorda	18	Shackelford	1
Armstrong	1	Dallas	1,134	Hidalgo	88	Maverick	13	Shelby	5
Atascosa	3	Dawson	2	Hill	31	Mc Culloch	0	Sherman	0
Austin	8	De Witt	6	Hockley	1	Mc Lennan	2,242	Smith	150
Bailey	0	Deaf Smith	1	Hood	24	Mc Mullen	0	Somervell	3
Bandera	5	Delta	0	Hopkins	14	Medina	8	Starr	3
Bastrop	6	Denton	270	Houston	6	Menard	0	Stephens	3
Baylor	0	Dickens	0	Howard	6	Midland	39	Sterling	0
Bee	5	Dimmit	1	Hudspeth	0	Milam	7	Stonewall	0
Bell	210	Donley	1	Hunt	25	Mills	1	Sutton	1
Bexar	507	Duval	0	Hutchinson	5	Mitchell	1	Swisher	1
Blanco	6	Eastland	5	Irion	0	Montague	3	Tarrant	867
Borden	0	Ector	19	Jack	4	Montgomery	283	Taylor	62
Bosque	20	Edwards	0	Jackson	2	Moore	0	Terrell	0
Bowie	15	El Paso	109	Jasper	10	Morris	9	Terry	1
Brazoria	100	Ellis	69	Jeff Davis	0	Motley	0	Throckmorton	0
Brazos	44	Erath	10	Jefferson	81	Nacogdoches	20	Titus	12
Brewster	0	Falls	13	Jim Hogg	0	Navarro	17	Tom Green	23
Briscoe	0	Fannin	3	Jim Wells	6	Newton	0	Travis	410
Brooks	2	Fayette	8	Johnson	64	Nolan	4	Trinity	1
Brown	19	Fisher	1	Jones	3	Nueces	71	Tyler	3
Burleson	4	Floyd	2	Karnes	4	Ochiltree	1	Upshur	8
Burnet	18	Foard	0	Kaufman	36	Oldham	0	Upton	0
Caldwell	5	Fort Bend	358	Kendall	37	Orange	16	Uvalde	4
Calhoun	2	Franklin	8	Kenedy	1	Palo Pinto	4	Val Verde	5
Callahan	3	Freestone	18	Kent	0	Panola	4	Van Zandt	8
Cameron	56	Frio	1	Kerr	26	Parker	36	Victoria	29
Camp	2	Gaines	0	Kimble	1	Parmer	2	Walker	6
Carson	2	Galveston	109	King	0	Pecos	3	Waller	8
Cass	15	Garza	1	Kinney	1	Polk	7	Ward	0
Castro	1	Gillespie	18	Kleberg	3	Potter	17	Washington	19
Chambers	10	Glasscock	0	Knox	0	Presidio	0	Webb	21
Cherokee	6	Goliad	1	La Salle	0	Rains	1	Wharton	10
Childress	1	Gonzales	3	Lamar	17	Randall	44	Wheeler	0
Clay	0	Gray	2	Lamb	2	Reagan	1	Wichita	18
Cochran	0	Grayson	49	Lampasas	3	Real	0	Wilbarger	9
Coke	0	Gregg	97	Lavaca	4	Red River	1	Willacy	0
Coleman	2	Grimes	8	Lee	4	Reeves	0	Williamson	220
Collin	582	Guadalupe	35	Leon	5	Refugio	1	Wilson	4
Collingsworth	3	Hale	4	Liberty	15	Roberts	0	Winkler	0
Colorado	9	Hall	0	Limestone	16	Robertson	6	Wise	18
Comal	49	Hamilton	4	Lipscomb	0	Rockwall	69	Wood	9
Comanche	7	Hansford	0	Live Oak	1	Runnels	1	Yoakum	1
Concho	4	Hardeman	1	Llano	3	Rusk	16	Young	5
Cooke	12	Hardin	19	Loving	0	Sabine	2	Zapata	1
Coryell	29	Harris	1,494	Lubbock	33	San Augustine	0	Zavala	1
Cottle	0	Harrison	27	Lynn	1	San Jacinto	1	Total	11,316

Source: ICUT.

Enrollment by State
Fall 2000 - Fall 2006

Fall	2000	2001	2002	2003	2004	2005	2006
Alabama	32	34	30	34	33	33	32
Alaska	12	13	14	14	18	20	15
Arizona	57	61	57	56	62	81	79
Arkansas	118	132	129	133	122	105	99
California	250	246	227	238	255	252	269
Colorado	134	138	137	129	132	145	143
Connecticut	6	11	7	8	6	7	8
Delaware	2	4	3	1	0	1	1
District of Columbia	1	1	0	2	2	2	2
Florida	77	67	53	60	80	88	97
Georgia	52	52	41	46	58	63	73
Hawaii	14	15	9	8	15	13	10
Idaho	4	7	4	5	5	9	5
Illinois	80	88	87	103	97	105	117
Indiana	37	36	31	28	28	28	29
Iowa	20	23	19	24	21	19	20
Kansas	111	110	96	84	84	91	33
Kentucky	24	21	25	18	18	13	13
Louisiana	144	163	156	145	136	145	152
Maine	0	4	4	4	6	6	2
Maryland	26	28	22	22	18	28	32
Massachusetts	7	10	13	12	18	19	22
Michigan	13	15	14	16	16	22	31
Minnesota	23	29	34	43	35	35	37
Mississippi	41	41	39	34	37	38	34
Missouri	114	111	110	121	101	100	97
Montana	4	4	3	2	6	1	3
Nebraska	44	41	41	41	34	29	28
Nevada	8	8	3	2	1	12	19
New Hampshire	12	10	8	8	8	5	7
New Jersey	25	27	26	22	24	21	19
New Mexico	63	76	69	68	70	66	69
New York	27	22	25	18	27	24	25
North Carolina	37	38	32	43	37	40	41
North Dakota	3	2	3	1	0	1	1
Ohio	21	25	30	28	27	29	39
Oklahoma	218	221	204	186	184	177	170
Oregon	24	17	14	21	21	21	20
Pennsylvania	18	19	22	29	27	26	32
Rhode Island	3	4	3	1	5	2	4
South Carolina	18	19	16	18	20	16	19
South Dakota	11	12	12	9	12	8	8
Tennessee	84	74	72	67	65	66	80
Texas	11128	11553	11613	11316	11233	11349	11316
Utah	9	8	11	8	6	5	9
Vermont	1	1	2	1	0	2	3
Virginia	66	54	51	38	37	44	55
Washington	40	36	37	41	31	36	31
West Virginia	1	2	2	5	2	1	0
Wisconsin	16	19	21	17	23	17	19
Wyoming	6	5	4	6	4	6	10
Total	13286	13757	13685	13384	13307	13472	13479

Source: IRT.

Countries Represented by Nonresident Aliens, Fall 2000 to Fall 2006

	Fall	2000	2001	2002	2003	2004	2005	2006		Fall	2000	2001	2002	2003	2004	2005	2006
Albania		0	0	0	1	1	0	0	Lebanon		1	2	1	2	1	1	0
Angola		0	0	1	1	2	2	2	Malaysia		2	2	1	0	1	1	3
Argentina		2	6	6	5	4	2	1	Mali		2	2	0	0	0	1	1
Armenia		0	0	0	0	1	1	1	Mauritius		1	0	0	0	0	0	0
Australia		5	5	4	3	4	1	4	Mexico		9	9	6	6	8	7	8
Austria		1	0	1	1	0	0	0	Moldova		0	0	0	1	1	1	0
Azerbaijan		0	0	0	0	0	1	0	Mongolia		0	0	0	1	1	1	1
Bahamas		2	2	2	2	1	3	3	Montserrat		0	0	0	0	1	1	1
Bangladesh		2	3	3	2	2	1	2	Nepal		1	1	2	2	5	7	5
Belarus		0	0	0	1	1	0	0	Netherlands		1	0	1	0	0	0	0
Belgium		1	1	1	0	0	0	0	New Zealand		2	1	0	0	0	3	2
Belize		1	1	0	1	1	1	0	Nicaragua		1	2	1	1	2	2	0
Bolivia		1	1	1	1	3	3	1	Nigeria		7	10	15	19	22	30	29
Brazil		2	5	6	6	3	2	5	North Mariana Isle		1	1	0	0	0	0	0
Bulgaria		6	6	4	4	6	2	3	Norway		1	2	2	0	1	0	0
Cambodia		0	1	1	0	0	0	0	Pakistan		8	9	10	3	2	3	5
Cameroon		0	1	1	3	1	2	2	Panama		0	1	2	2	0	1	1
Canada		17	16	18	18	15	13	18	Peru		0	1	1	1	2	2	1
Cayman Islands		0	1	2	2	2	0	0	Philippines		0	0	0	1	0	1	0
Chile		1	0	0	0	0	0	0	Poland		2	1	1	2	2	2	1
China*		64	65	69	72	70	67	68	Portugal		0	0	0	0	0	1	0
Colombia		2	0	1	2	2	7	9	Romania		3	4	4	6	6	2	3
Congo		0	0	0	0	1	1	1	Russia		4	3	4	2	6	5	4
Coral Sea Isle Terr.		1	0	0	0	0	0	0	Rwanda		1	1	2	1	1	1	0
Costa Rica		4	5	7	8	8	7	1	Saudi Arabia		2	1	1	0	0	0	0
Cote D'Ivoire		0	0	0	0	0	0	1	Senegal		1	0	0	0	0	1	2
Croatia		0	0	2	2	1	0	0	Serbia & Montenegro		0	1	1	0	0	1	1
Cyprus		1	0	0	0	0	0	0	Sierra Leone		0	0	1	1	0	0	0
Czech Republic		1	0	0	1	3	4	5	Singapore		3	4	1	1	1	1	0
Dominica		0	1	1	1	0	0	0	Slovakia		0	1	1	1	2	2	4
Ecuador		0	2	3	4	4	3	3	Slovenia		2	2	2	3	1	1	0
El Salvador		0	0	0	0	1	2	3	Somalia		1	1	0	0	0	0	0
Ethiopia		1	1	0	0	0	1	1	South Africa		1	2	5	5	1	1	2
Finland		0	0	0	1	0	1	1	Soviet Union		2	1	0	0	0	0	0
France		6	3	4	6	8	4	3	Spain		1	1	2	3	2	1	0
Georgia		0	0	3	2	0	0	0	Sri Lanka		5	6	4	4	7	7	5
Germany		6	10	7	7	8	7	7	St Vincent & Grenadines		0	0	1	1	1	1	0
Ghana		2	3	0	3	3	2	4	Sweden		5	8	4	4	5	4	4
Greece		0	0	0	0	1	1	0	Switzerland		2	1	0	0	0	0	0
Guatemala		1	2	2	3	1	2	1	Taiwan		42	41	36	25	17	12	15
Honduras		2	1	1	1	2	2	2	Thailand		5	6	5	2	2	3	4
Hungary		6	6	6	4	1	1	1	Togo		0	0	0	0	0	0	0
India		29	32	39	40	45	34	28	Trinidad/Tobago		1	3	5	4	3	3	4
Indonesia		9	6	5	3	4	5	5	Turkey		0	0	1	2	1	1	0
Ireland		0	0	0	0	0	0	0	Uganda		0	1	3	2	2	2	1
Iran		0	0	0	0	1	1	1	Ukraine		2	5	4	1	1	3	2
Italy		1	1	2	2	2	1	0	United Arab Emirates		2	2	2	0	0	0	0
Jamaica		3	2	1	0	0	0	0	United Arab Republic		0	1	0	0	0	0	0
Japan		17	16	10	9	10	13	13	United Kingdom		5	4	8	9	8	13	16
Jordan		0	0	0	0	0	0	1	Uzbekistan		0	0	0	1	1	0	1
Kazakhstan		0	0	0	1	0	0	0	Venezuela		7	10	9	11	10	11	11
Kenya		4	6	5	3	6	5	4	Vietnam		0	2	2	4	5	4	5
Korea, Dem. People's		0	0	3	2	0	0	0	Virgin Islands (British)		1	0	0	1	1	1	2
Korea, Rep. of		23	32	29	28	29	34	36	Yemen (Sanaa)		0	0	0	1	1	0	0
Kosovo		0	0	0	0	1	0	0	Yugoslavia		0	0	0	1	0	0	0
Kuwait		0	1	1	1	0	0	0	Zimbabwe		1	2	2	1	2	2	3
Latvia		0	1	1	2	2	1	1	Unknown		0	0	0	1	0	0	0
										Total	362	403	406	398	397	388	389

*Hong Kong counted in China.

Source: International Programs Report, "Annual Census of Foreign Students in the United States"

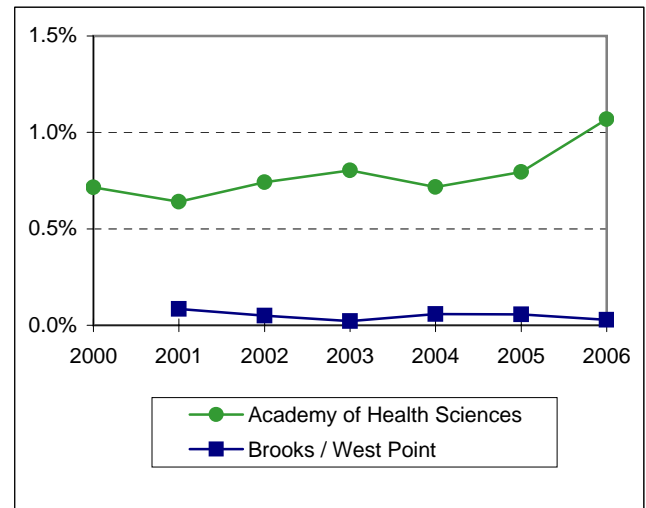
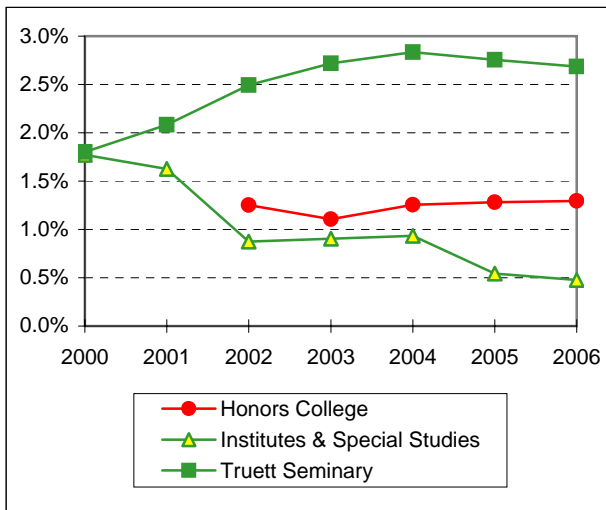
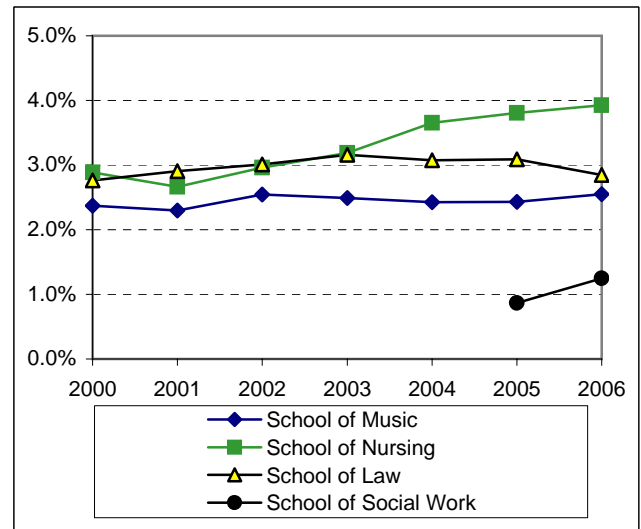
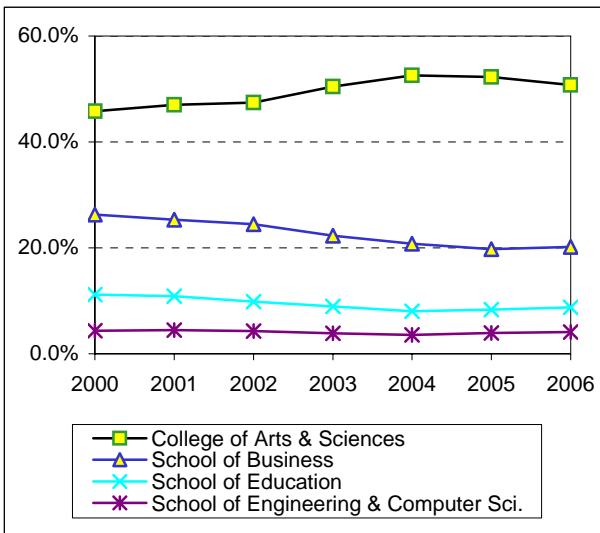
**Enrollment by Unit
Fall 2000 - Fall 2006**

	Fall	2000	2001	2002	2003	2004	2005	2006
College of Arts & Sciences		6,281	6,684	6,713	7,035	7,257	7,301	7,129
School of Business		3,609	3,598	3,463	3,105	2,872	2,760	2,835
School of Education		1,534	1,546	1,397	1,246	1,105	1,169	1,229
School of Engineering & Computer Sci.		593	633	605	536	495	551	574
School of Music		325	327	360	347	335	340	358
School of Nursing		396	379	419	444	504	532	551
School of Social Work							121	175
Honors College				177	154	173	179	182
Institutes & Special Studies		243	231	124	126	129	76	67
Graduate School		14	11	10	10	7	10	9
School of Law		379	413	426	440	424	432	400
Truett Seminary		247	296	353	379	391	385	377
Academy of Health Sciences		98	91	105	112	99	111	150
Brooks / West Point			12	7	3	8	8	4
TOTAL		13,719	14,221	14,159	13,937	13,799	13,975	14,040

Notes:

1. The enrollment for the Graduate School reflects students classified as "No Major."
2. A new doctoral program in Physical Therapy was added in 2001. This program is administered through the Brooks and West Point academies.
3. The Honors College was established in 2002.
4. The School of Social Work was established in 2005.

Enrollment Percentage by Unit
Fall 2000 - Fall 2006

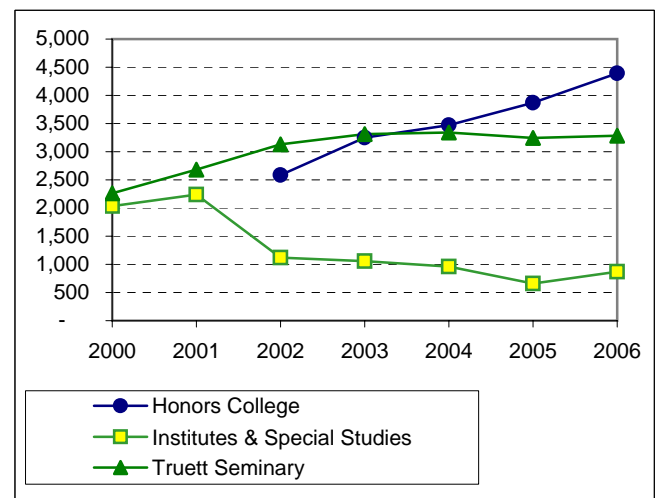
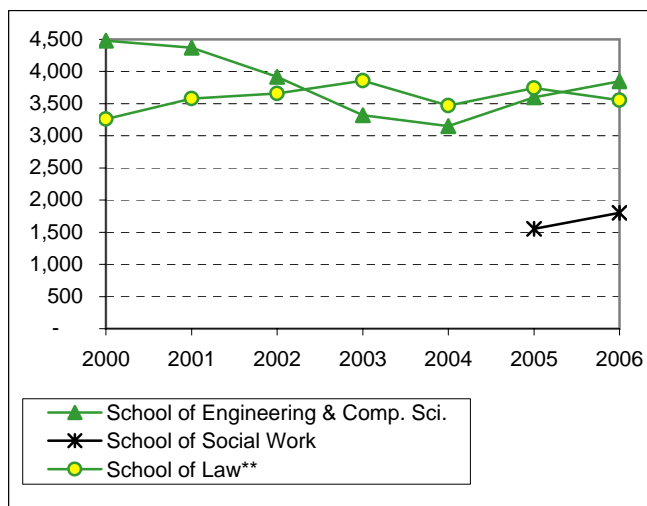
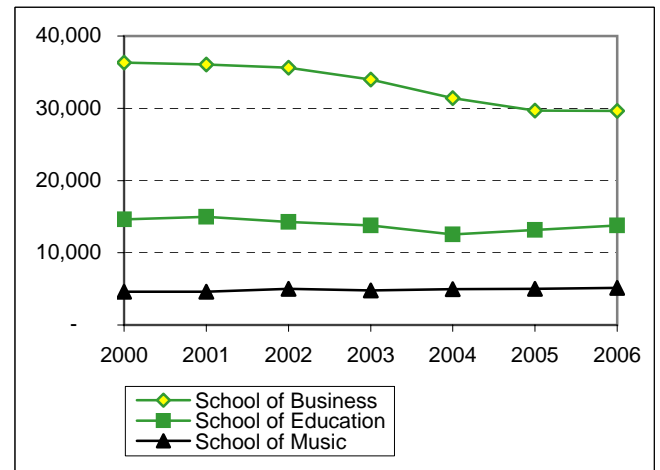
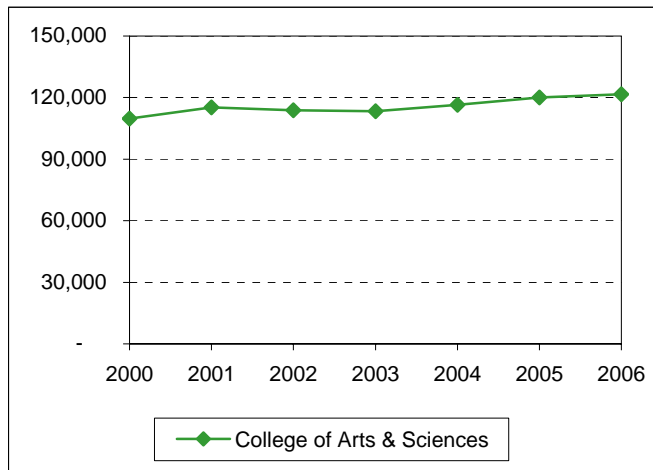


	Fall	2000	2001	2002	2003	2004	2005	2006
College of Arts & Sciences		45.8%	47.0%	47.4%	50.5%	52.6%	52.2%	50.8%
School of Business		26.3%	25.3%	24.5%	22.3%	20.8%	19.7%	20.2%
School of Education		11.2%	10.9%	9.9%	8.9%	8.0%	8.4%	8.8%
School of Engineering & Computer Sci.		4.3%	4.5%	4.3%	3.8%	3.6%	3.9%	4.1%
School of Music		2.4%	2.3%	2.5%	2.5%	2.4%	2.4%	2.5%
School of Nursing		2.9%	2.7%	3.0%	3.2%	3.7%	3.8%	3.9%
School of Social Work							0.9%	1.2%
Honors College				1.3%	1.1%	1.3%	1.3%	1.3%
Institutes & Special Studies		1.8%	1.6%	0.9%	0.9%	0.9%	0.5%	0.5%
Graduate School		0.1%	0.1%	0.1%	0.1%	0.1%	0.1%	0.1%
School of Law		2.8%	2.9%	3.0%	3.2%	3.1%	3.1%	2.8%
Truett Seminary		1.8%	2.1%	2.5%	2.7%	2.8%	2.8%	2.7%
Academy of Health Sciences		0.7%	0.6%	0.7%	0.8%	0.7%	0.8%	1.1%
Brooks / West Point			0.1%	0.0%	0.0%	0.1%	0.1%	0.0%

See Notes, page 14.

**Student Credit Hours by Unit*
(Excluding Health Sciences)
Fall 2000 - Fall 2006**

	Fall	2000	2001	2002	2003	2004	2005	2006
College of Arts & Sciences		109,742	115,178	113,781	113,299	116,430	120,123	121,641
School of Business		36,307	36,057	35,600	33,980	31,387	29,696	29,645
School of Education		14,640	14,963	14,272	13,790	12,551	13,175	13,770
School of Engineering & Comp. Sci.		4,480	4,372	3,919	3,321	3,153	3,601	3,847
School of Music		4,617	4,605	4,994	4,797	4,961	5,021	5,126
School of Nursing		3,245	3,180	3,399	3,479	4,107	4,235	4,209
School of Social Work							1,551	1,802
Honors College				2,588	3,249	3,474	3,872	4,394
Institutes & Special Studies		2,033	2,240	1,122	1,056	963	660	870
School of Law**		3,260	3,580	3,660	3,857	3,470	3,745	3,553
Truett Seminary		2,260	2,683	3,130	3,311	3,343	3,242	3,284
TOTAL		180,583	186,858	186,465	184,139	183,839	188,921	192,141

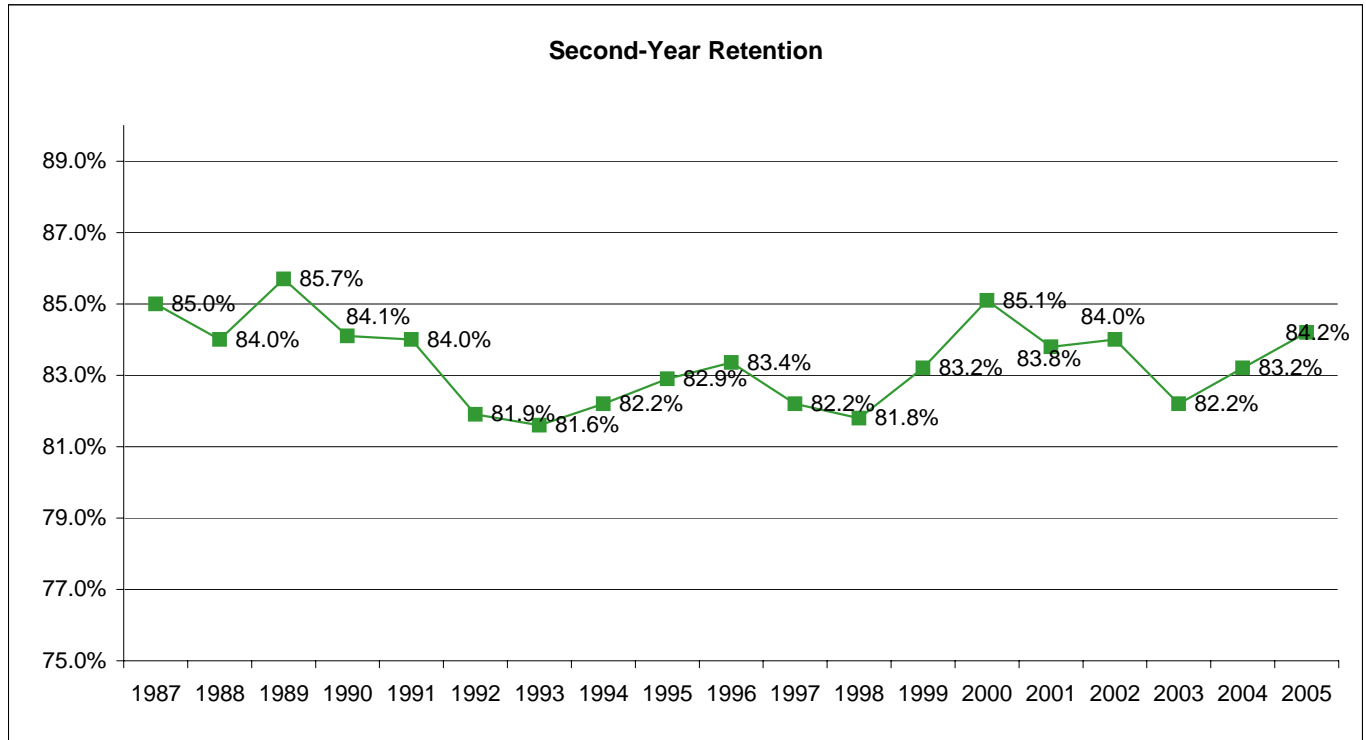


*BIC courses have been credited to the department of the instructor. See additional notes on page 14.

**Quarter hours converted to semester hours.

Retention of First-Time Freshman Classes Entering Fall 1987 - Fall 2005

First-Time Freshman Class of:	N	After 1 year		After 2 years		After 3 years			After 4 years			After 5 years			After 6 years		
		Cont.	Drop.	Cont.	Drop.	Cont.	Drop.	Grad.	Cont.	Drop.	Grad.	Cont.	Drop.	Grad.	Cont.	Drop.	Grad.
		1987	2,313	85.0%	15.0%	75.6%	24.4%	71.7%	27.1%	1.2%	24.2%	28.2%	47.6%	3.4%	28.3%	68.3%	1.1%
1988	2,302	84.0%	16.0%	75.5%	24.5%	72.5%	26.5%	1.0%	29.8%	28.3%	41.9%	3.3%	28.5%	68.2%	0.8%	27.9%	71.3%
1989	2,357	85.7%	14.3%	74.8%	25.2%	71.2%	27.7%	1.1%	28.3%	28.9%	42.8%	3.9%	28.9%	67.2%	1.2%	28.8%	70.0%
1990	2,435	84.1%	15.9%	73.0%	27.0%	69.8%	29.0%	1.2%	28.1%	29.6%	42.3%	4.2%	30.0%	65.8%	1.6%	29.4%	69.0%
1991	2,156	84.0%	16.0%	74.5%	25.5%	70.7%	28.2%	1.1%	26.5%	29.6%	43.9%	3.8%	29.7%	66.5%	1.3%	29.0%	69.7%
1992	2,367	81.9%	18.1%	71.5%	28.5%	67.2%	31.5%	1.4%	28.4%	32.3%	39.3%	4.8%	32.0%	63.2%	0.9%	32.2%	66.9%
1993	2,433	81.6%	18.4%	72.0%	28.0%	68.4%	30.4%	1.2%	27.5%	32.3%	40.2%	4.5%	32.3%	63.2%	1.3%	31.8%	66.9%
1994	2,351	82.2%	17.8%	72.3%	27.7%	68.5%	30.1%	1.4%	27.0%	31.1%	41.9%	4.9%	31.9%	63.2%	1.5%	31.8%	66.7%
1995	2,339	82.9%	17.1%	76.0%	24.0%	71.4%	27.2%	1.4%	28.8%	28.3%	42.9%	4.4%	28.5%	67.1%	1.2%	28.0%	70.8%
1996	2,476	83.4%	16.6%	74.8%	25.2%	72.2%	26.9%	0.9%	29.4%	27.7%	42.9%	4.0%	27.6%	68.4%	1.3%	27.0%	71.7%
1997	2,410	82.2%	17.8%	73.7%	26.3%	70.3%	28.4%	1.2%	30.0%	29.9%	40.1%	4.9%	29.0%	66.1%	1.4%	28.5%	70.2%
1998	2,938	81.8%	18.2%	75.0%	25.0%	71.1%	27.1%	1.7%	28.9%	28.1%	43.0%	4.6%	29.4%	66.0%	1.4%	26.8%	71.9%
1999	2,772	83.2%	16.8%	75.5%	24.5%	70.7%	27.5%	1.8%	27.7%	27.0%	45.3%	3.9%	27.0%	69.1%	1.2%	26.8%	72.0%
2000	2,832	85.1%	14.9%	77.9%	22.1%	74.3%	25.0%	0.8%	26.4%	24.6%	49.0%	3.6%	24.9%	71.5%	1.1%	25.0%	73.9%
2001	2,801	83.8%	16.2%	75.7%	24.3%	73.3%	25.3%	1.4%	25.2%	26.8%	47.9%	3.5%	27.5%	69.0%			
2002	2,620	84.0%	16.0%	76.3%	23.7%	72.6%	25.5%	1.9%	22.7%	26.6%	50.7%						
2003	2,678	82.2%	17.8%	74.5%	25.5%	70.6%	27.4%	1.9%									
2004	2,785	83.2%	16.8%	76.0%	24.0%												
2005	3,168	84.2%	15.8%														
Average		83.4%	16.6%	74.7%	25.3%	71.0%	27.7%	1.3%	27.4%	28.7%	43.9%	4.1%	29.0%	66.9%	1.2%	28.7%	70.1%
5-year Avg		83.5%	16.5%	76.1%	23.9%	72.3%	26.1%	1.6%	26.2%	26.6%	47.2%	4.1%	27.6%	68.3%	1.3%	26.8%	71.9%



Source: IRT.

**Distribution of Degrees (Duplicated Count*)
2000-01 through 2005-06**

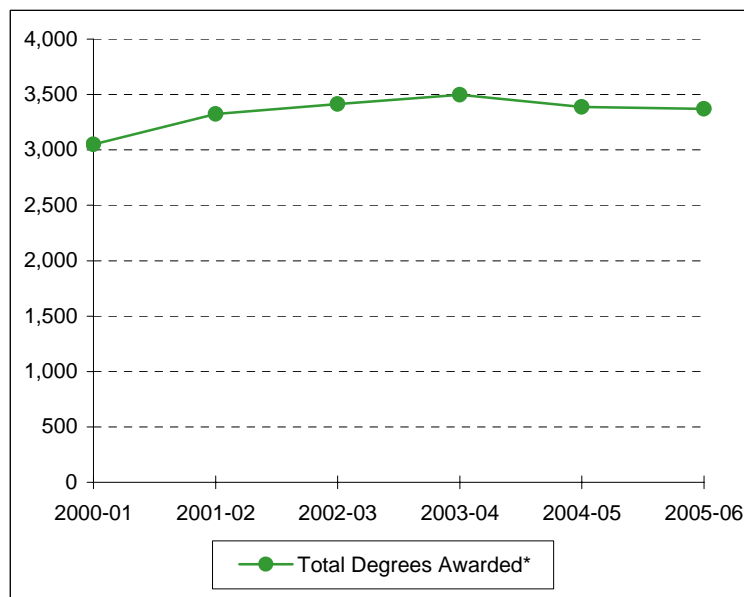
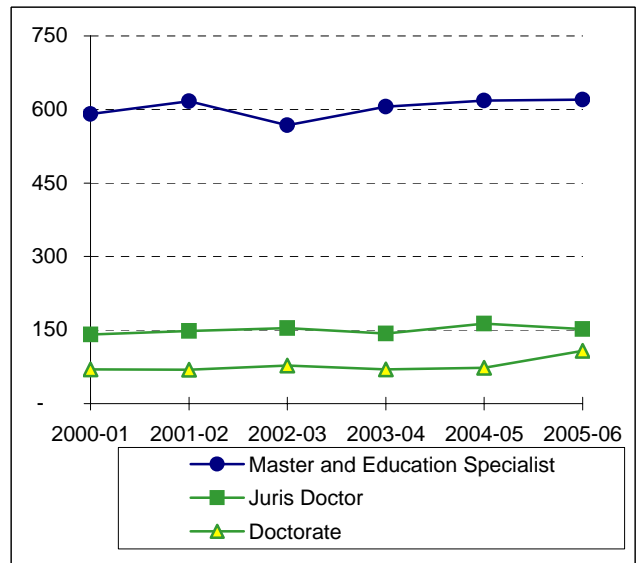
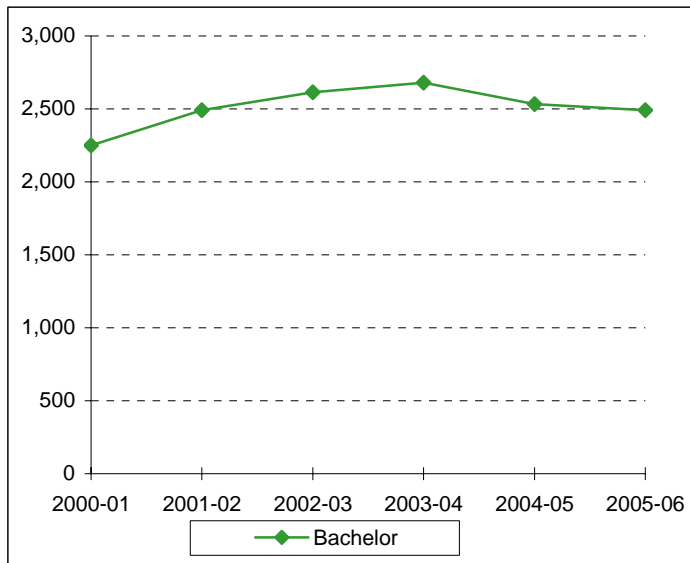
	2000-01	2001-02	2002-03	2003-04	2004-05	2005-06
Bachelor of Arts	811	997	1036	1090	1084	1075
Bachelor of Business Administration	1002	1009	1028	1019	909	821
Bachelor of Fine Arts	31	37	40	40	54	42
Bachelor of Music	22	30	29	27	39	36
Bachelor of Music Education	24	18	28	15	19	18
Bachelor of Science	142	165	200	229	261	270
Bachelor of Science in Aviation Sciences	8	13	8	10	6	13
Bachelor of Science in Computer Science	24	24	35	20	17	23
Bachelor of Science in Education	350	350	345	363	213	212
Bachelor of Science in Electrical & Computer Engineering			23	25	16	24
Bachelor of Science in Engineering	28	41	7	2	1	3
Bachelor of Science in Family & Consumer Sciences	42	59	73	102	87	77
Bachelor of Science in Informatics	1	8	17	16	12	11
Bachelor of Science in Mechanical Engineering			12	15	20	14
Bachelor of Science in Nursing	97	86	90	85	108	121
Bachelor of Social Work					2	13
TOTAL BACHELOR DEGREES	2582	2837	2971	3058	2848	2773
Master of Accountancy	35	39	35	47	40	39
Master of Arts	58	66	56	77	74	67
Master of Business Administration	158	149	105	95	104	74
Master of Business Admin. in International Management	3	1	0			1
Master of Clinical Gerontology	4	4	7			
Master of Divinity	36	33	51	71	70	74
Master of Engineering						1
Master of Environmental Studies	1	0	1	2	2	3
Master of Fine Arts	2	2	0	1	2	2
Master of Health Administration	47	39	38	37	43	45
Master of International Journalism	0	1	1	2	2	1
Master of International Management	1	0	0	1	0	0
Master of Music	22	22	31	23	25	26
Master of Physical Therapy	19	21	18	17	16	0
Master of Public Policy and Administration	4	4	2	6	3	3
Master of Science	25	21	34	22	44	38
Master of Science in Biomedical Engineering						2
Master of Science in Clinical Psychology	11	8	11	11	11	7
Master of Science in Communication Sciences & Disorders	37	28	26	33	22	34
Master of Science in Economics	5	6	4	10	4	8
Master of Science in Education	43	83	64	77	80	97
Master of Science in Electrical/Computer Engineering					1	6
Master of Science in Gerontology	9	7	12			
Master of Science in Information Systems	27	31	18	14	15	15
Master of Science in Limnology	1	0	0	0	0	0
Master of Science in Mechanical Engineering						1
Master of Science in Nursing	10	14	13	21	15	20
Master of Social Work	17	27	29	25	32	39
Master of Taxation	9	6	10	10	11	13
Master of Theological Studies						2
TOTAL MASTER'S DEGREES	584	612	566	602	616	618
TOTAL EDUCATION SPECIALIST DEGREES	7	6	4	4	2	2
TOTAL JURIS DOCTOR DEGREES	141	148	154	143	163	163
Doctor of Education	31	18	25	23	22	26
Doctor of Ministry		2	7	3	5	5
Doctor of Philosophy	31	26	31	34	29	50
Doctor of Psychology	8	11	11	7	12	9
Doctor of Physical Therapy **						14
Doctor of Science in Physical Therapy **		12	4	3	5	4
TOTAL DOCTORAL DEGREES	70	69	78	70	73	108
TOTAL DEGREES AWARDED	3384	3672	3773	3877	3702	3664

* Degree information on this page is reported beginning with the Summer semester and including the following Fall and Spring terms.

An individual graduate with multiple majors is counted as a whole graduate in each major area of study (i.e., duplicated count).

** The 2005-2006 counts for Doctor of Physical Therapy and Doctor of Science in Physical Therapy were corrected on 1/9/2008.

Summary of Degrees Awarded (Unduplicated Count*)
2000-01 through 2005-06



Degree Level:	2000-01	2001-02	2002-03	2003-04	2004-05	2005-06
Bachelor	2,249	2,491	2,615	2,679	2,533	2,491
Master and Education Specialist	591	617	568	606	618	620
Juris Doctor	141	148	154	143	163	152
Doctorate	70	69	78	70	73	108
Total Degrees Awarded*	3,051	3,325	3,415	3,498	3,387	3,371

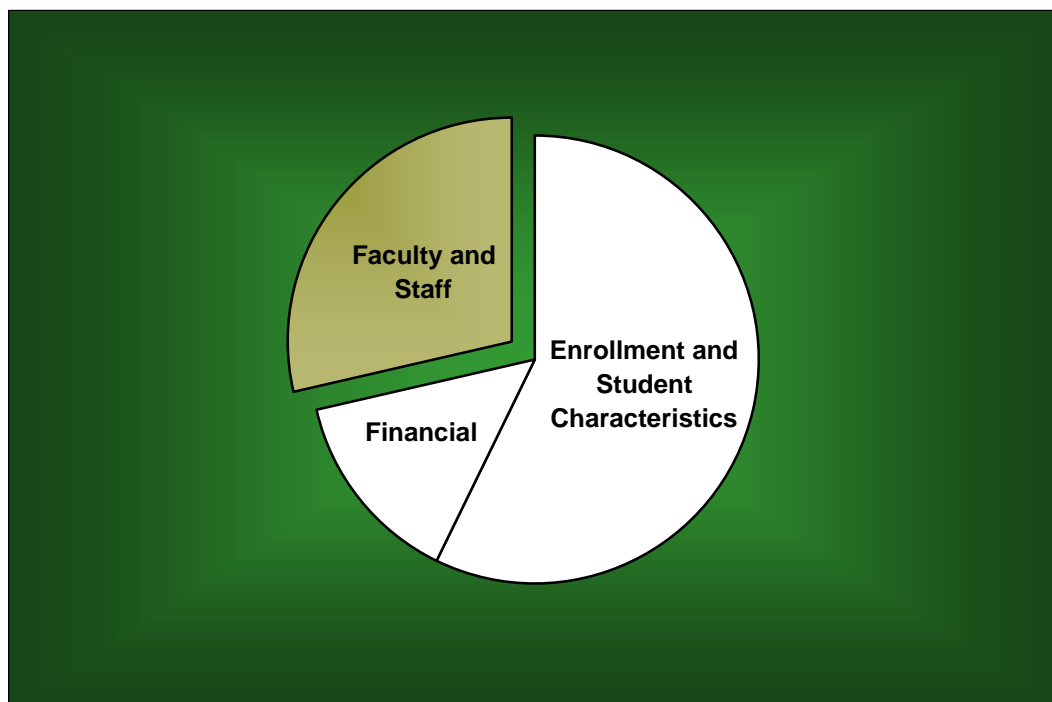
*The information on this page indicates the number of degree recipients (i.e., unduplicated count). Degree information is reported beginning with the Summer semester and including the following Fall and Spring terms.

Degree Programs (as of May 2007)

Accounting (BBA)	Communication Sci. & Disorders (BA)	Exercise Physiology (BSEd)
Accounting (MAcc)	Communication Sci. & Disorders (MA)	Family Nurse Practitioners (MSN)
Advanced Nursing Leadership (MSN)	Communication Sci. & Disorders (MSCSD)	Fashion Design (BA)
Air Science and Environmnet (IMES)	Communication Specialist (BA)	Fashion Design (BSFCS)
American Studies (BA)	Communication Studies (MA)	Fashion Merchandising (BA)
American Studies (MA)	Community Health (BSEd)	Fashion Merchandising (BSFCS)
Anthropology (BA)	Composition (BM)	Film and Digital Media (BA)
Anthropology (BS)	Composition (MM)	Finance (BBA)
Applied Mathematics (BS)	Computer Science Grade 8-12 (BSEd)	Financial Services / Planning (BBA)
Applied Music (BM)	Computer Science (BA)	Forestry (BA)
Archaeology (BA)	Computer Science (BSCS)	Forestry (BS)
Architecture (BA)	Computer Science (MS)	French (BA)
Art All-Level (BSEd)	Conducting (MM)	General Family & Consumer Sci. (BA)
Art History (BA)	Curriculum & Instruction (EdD)	General Family & Consumer Sci. (BSFCS)
Asian Studies (BA)	Curriculum & Instruction (MA)	General Studies in HHPR (BSEd)
Athletic Training (BSEd)	Curriculum & Instruction (MSEd)	Geography (BA)
Aviation Sciences (BSAvSc)	Dentistry (BA)	Geology (BS)
Baylor Business Fellows (BBA)	Dentistry (BS)	Geology (MS)
Biblical & Related Languages (BA)	Design (BFA)	Geology (PhD)
Biochemistry (BA)	Directing (MFA)	Geophysics (BS)
Biochemistry (BS)	Distribution Management/Technology (BBA)	German (BA)
Bioinformatics (BSI)	Early Childhood - Grade 4 (BSEd)	Great Texts of the Western Tradition (BA)
Biology (BA)	Earth Science (BA)	Greek (BA)
Biology (BS)	Earth Science (MA)	Health Care Administration (MHA)
Biology (MA)	Economics (BA)	Health, Human Performance, & Recreation (MSEd)
Biology (MS)	Economics (BBA)	Health Science Studies (BSEd)
Biology (PhD)	Economics (BS)	History (BA)
Biomedical Engineering (MSBME)	Economics (MSEco)	History (MA)
Biomedical Studies (MS)	Education (MA)	Human Resources Management (BBA)
Biomedical Studies (PhD)	Educational Administration (EdS)	Information Systems (BBA)
Business Administration (MBA)	Educational Administration (MSEd)	Information Systems Management (MBA)
Business for Secondary Educ. (BBA)	Educational Psychology (EdS)	Information Systems (MSIS)
Business French (BBA)	Educational Psychology (MA)	Instrumental Music (BME)
Business German (BBA)	Educational Psychology (MSEd)	Interior Design (BA)
Business - Journalism (BBA)	Educational Psychology (PhD)	Interior Design (BSFCS)
Business Russian (BBA)	Electrical & Computer Engineering (BSECE)	International Business (BBA)
Business Spanish (BBA)	Electrical & Computer Engineering (MSECE)	International Economics (MA)
Chemistry (BA)	Engineering (BSE)	International Economics (MS)
Chemistry (BS)	Engineering (ME)	International Journalism (MIJ)
Chemistry (MS)	English (BA)	International Management (MBA)
Chemistry (PhD)	English (MA)	International Management (MBAIM)
Child & Family Studies (BA)	English (PhD)	International Relations (MA)
Child & Family Studies (BSFCS)	English Grade 4-8 (BSEd)	International Studies (BA)
Choral Music (BME)	English Grade 8-12 (BSEd)	Journalism (BA)
Church Music (BM)	Entrepreneurship (BBA)	Journalism (MA)
Church Music (MM)	Environmental Biology (MS)	Language and Linguistics (BA)
Church-State Studies (MA)	Environmental Science (BS)	Latin American Studies (BA)
Church-State Studies (PhD)	Environmental Studies (BA)	Latin (BA)
Classics (BA)	Environmental Studies (BS)	Law (JD)
Clinical Laboratory Science (BS)	Environmental Studies (MES)	Life Science Grade 8-12 (BSEd)
Clinical Psychology (MSCP)	Environmental Studies (MS)	Limnology (MSL)
Clinical Psychology (PsyD)	Exercise, Nutrition & Preventive Health (PhD)	

Management (BBA)	Professional Selling (BBA)
Marketing (BBA)	Professional Writing (BA)
Mathematics (BA)	Psychology (BA)
Mathematics (BS)	Psychology (BS)
Mathematics (MS)	Psychology (PhD)
Mathematics (PhD)	Public Administration (BBA)
Mathematics Grade 4-8 (BSEd)	Public Policy & Administration (MPPA)
Mathematics Grade 8-12 (BSEd)	Real Estate (BBA)
Mechanical Engineering (BSME)	Recreation (BSEd)
Mechanical Engineering (MSME)	Religion (BA)
Media Business (BBA)	Religion (MA)
Medical Humanities (BA)	Religion (PhD)
Medicine (BA)	Religion, Politics and Society (PhD)
Medicine (BS)	Risk Management and Insurance (BBA)
Ministry (DMin)	Russian (BA)
Museum Studies (BA)	Science Grade 4-8 (BSEd)
Museum Studies (BS)	Slavic and East European Studies (BA)
Museum Studies (MA)	Social Studies Grade 4-8 (BSEd)
Music (BA)	Social Studies Grade 8-12 (BSEd)
Music Education (MM)	Social Work (BSW)
Music History & Literature (BM)	Social Work (MSW)
Music History & Literature (MM)	Sociology (BA)
Music Theory (MM)	Sociology (MA)
Neonatal Nurse Practitioner (MSN)	Sociology (PhD)
Neuroscience (BS)	Spanish (BA)
Neuroscience (MA)	Spanish (MA)
Nursing (BSN)	Spanish All-Level (BSEd)
Nutrition (MS)	Special Education All-Level (BSEd)
Nutrition Sciences (BA)	Speech Communication (BA)
Nutrition Sciences (BS)	Sports, Sponsorship & Sales (BBA)
Nutrition Sciences (BSFCS)	Statistics (BS)
Optometry (BA)	Statistics (MS)
Optometry (BS)	Statistics (PhD)
Pedagogy (BM)	Studio Art (BA)
Performance (BFA)	Studio Art (BFA)
Performance (MM)	Taxation (MT)
Philosophy (BA)	Theater Arts (BA)
Philosophy (MA)	Theater Arts (MA)
Philosophy (PhD)	Theological Studies (MTS)
Physical Education All-Level (BSEd)	Theology (MDiv)
Physical Science Grade 8-12 (BSEd)	Theory (BM)
Physical Therapy (DPT)	University Scholars (BA)
Physical Therapy (DScPT)	
Physics (BA)	
Physics (BS)	
Physics (MA)	
Physics (MS)	
Physics (PhD)	
Piano Accompanying (MM)	
Piano Pedagogy & Performance (MM)	
Political Science (BA)	
Political Science (MA)	
Political Science (PhD)	

Faculty and Staff



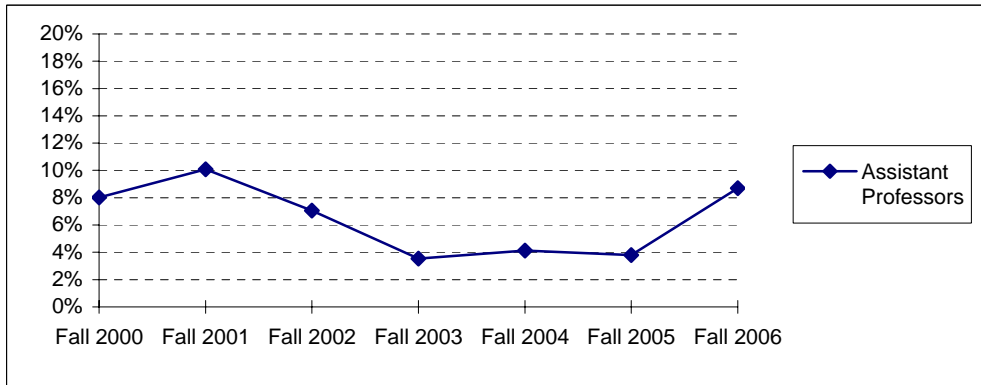
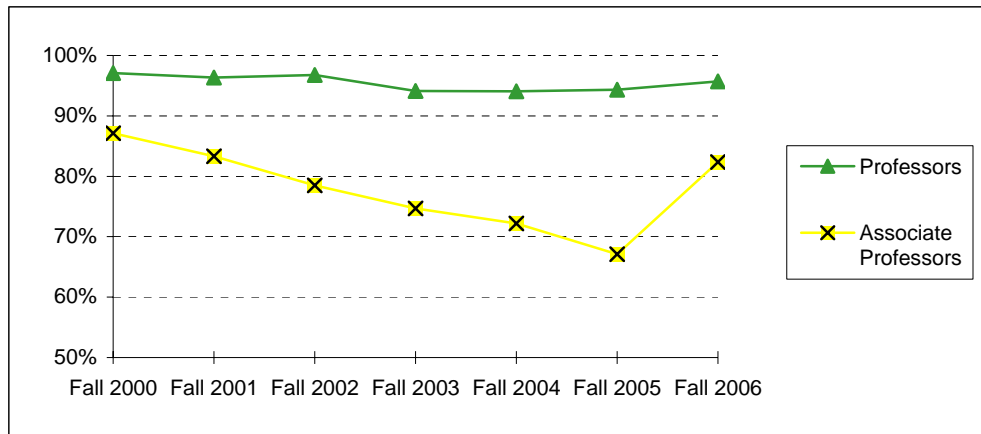
**Full-Time Faculty Positions (AAUP Definition)
Fall 2000 - Fall 2006**

Rank	Fall 2000		Fall 2001		Fall 2002		Fall 2003		Fall 2004		Fall 2005		Fall 2006	
	Male	Female	Male	Female	Male	Female	Male	Female	Male	Female	Male	Female	Male	Female
Professors:														
Number	203	39	211	34	213	33	210	29	205	32	197	32	198	35
Tenured	197	38	202	34	205	33	196	29	191	32	186	30	188	35
Associate Prof.:														
Number	86	46	89	49	96	48	105	49	108	43	108	44	124	46
Tenured	74	41	71	44	71	42	75	40	74	35	68	34	100	40
Assistant Prof:														
Number	84	53	85	54	93	63	99	70	102	68	98	60	84	54
Tenured	5	6	6	8	3	8	2	4	3	4	2	4	5	7
Instructors:														
Number	0	3	0	3	0	1	0	0	0	1	0	1	0	1
Tenured	0	1	0	1	0	0	0	0	0	1	0	1	0	1
Senior Lecturers:														
Number			26	38	22	39	22	38	21	37	21	33	21	33
Lecturers:														
Number	53	95	37	71	58	90	62	93	64	89	70	91	75	96
Total Number	426	236	448	249	482	274	498	279	500	270	494	261	502	265
Total Tenured	276	86	279	87	279	83	273	73	268	72	256	69	293	83

**Highest Degree Earned by Full-Time Faculty
Fall 2000 - Fall 2006**

	Fall 2000	Fall 2001	Fall 2002	Fall 2003	Fall 2004	Fall 2005	Fall 2006
Associate's	0	0	1	1	1	0	0
Bachelor's	0	1	1	2	2	6	5
Master's	159	165	199	222	213	200	180
Doctoral	480	507	550	569	572	566	591
Professional	23	24	26	26	26	24	28
Total	662	697	777	820	814	796	804

**Percentage of Full-Time Faculty with Tenure (AAUP Definition)
Fall 2000 - Fall 2006**



	Fall 2000	Fall 2001	Fall 2002	Fall 2003	Fall 2004	Fall 2005	Fall 2006
Professors	97.1%	96.3%	96.7%	94.1%	94.1%	94.3%	95.7%
Associate Professors	87.1%	83.3%	78.5%	74.7%	72.2%	67.1%	82.4%
Assistant Professors	8.0%	10.1%	7.1%	3.6%	4.1%	3.8%	8.7%
Instructors	33.3%	33.3%	0.0%			100.0%	100.0%
All Faculty	54.7%	52.5%	47.9%	44.5%	44.2%	43.0%	49.0%

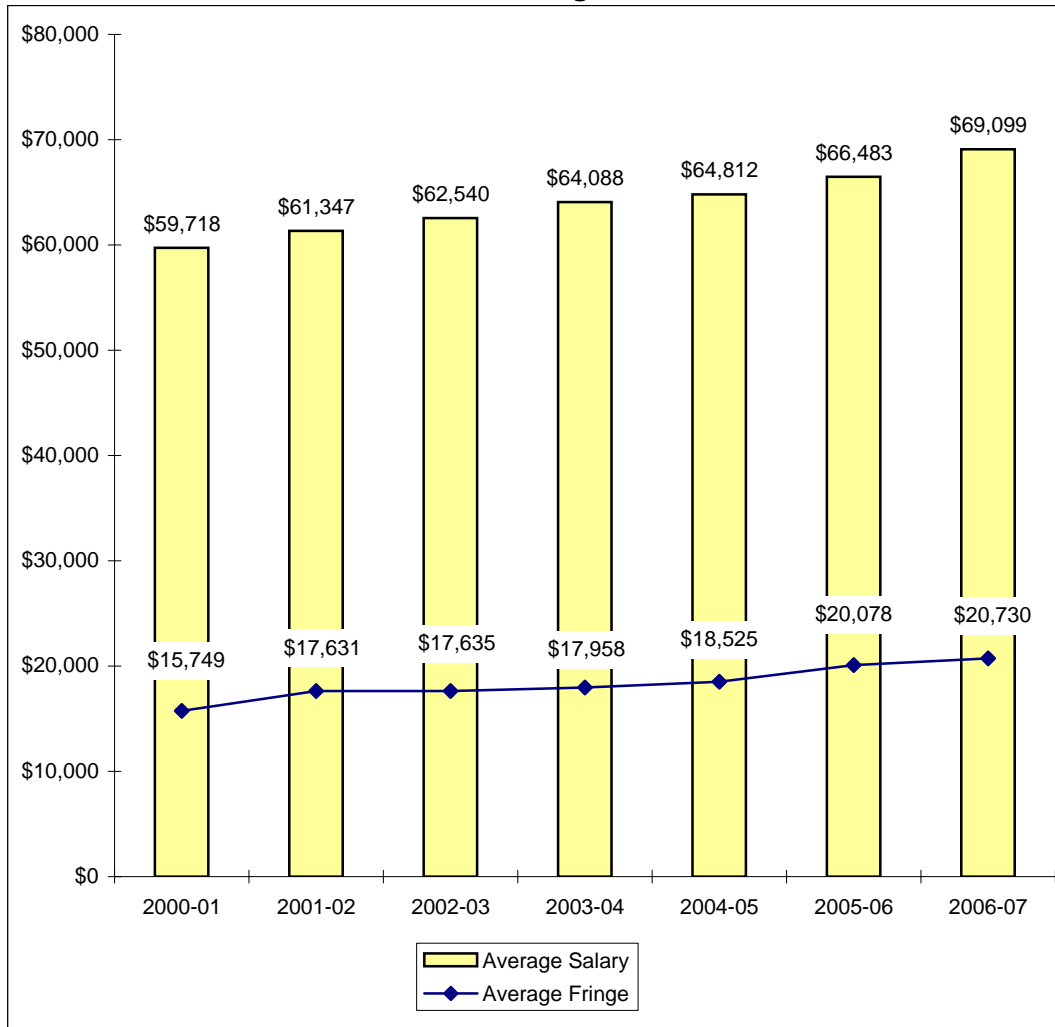
**Average Salaries of Full-Time Instructional Faculty
on Academic Year Contracts (AAUP Definition)
Fall 2000 - Fall 2006**

Rank	Fall 2000		Fall 2001		Fall 2002		Fall 2003	
	Number in Rank	Average Salary	Number in Rank	Average Salary	Number in Rank	Average Salary	Number in Rank	Average Salary
Professor	242	\$79,299	245	\$81,747	246	\$83,562	239	\$86,590
Associate Professor	132	\$60,511	138	\$62,697	144	\$65,136	154	\$67,706
Assistant Professor	137	\$47,530	139	\$50,046	156	\$55,208	169	\$57,177
Instructor	3	*	3	*	1	*	0	
Senior Lecturer			64	\$45,227	61	\$46,482	60	\$47,826
Lecturer	148	\$38,525	108	\$37,884	148	\$39,478	155	\$39,627
All Ranks	662	\$59,718	697	\$61,347	756	\$62,540	777	\$64,088
Average Fringe		\$15,749		\$17,631		\$17,635		\$17,958
Fringe as a Percentage of Average Salary		26.4%		28.7%		28.2%		28.0%
Percentage Increase in Average Salary for Continuing Faculty		4.1%		5.0%		4.9%		3.4%

Rank	Fall 2004		Fall 2005		Fall 2006	
	Number in Rank	Average Salary	Number in Rank	Average Salary	Number in Rank	Average Salary
Professor	237	\$87,091	229	\$89,219	233	\$92,385
Associate Professor	151	\$67,501	152	\$68,432	170	\$70,179
Assistant Professor	170	\$58,675	158	\$52,385	138	\$67,143
Instructor	1	*	1	*	1	*
Senior Lecturer	58	\$47,719	54	\$48,728	54	\$50,950
Lecturer	153	\$41,055	161	\$42,388	171	\$43,710
All Ranks	770	\$64,812	755	\$66,483	767	\$69,099
Average Fringe		\$18,525		\$20,078		\$20,730
Fringe as a Percentage of Average Salary		28.6%		30.2%		30.0%
Percentage Increase in Average Salary for Continuing Faculty		0.2%		3.4%		5.0%

*Data not displayed for five or fewer faculty.

**Average Compensation of Full-Time Instructional Faculty
on Academic Year Contracts
2000-01 through 2006-07**

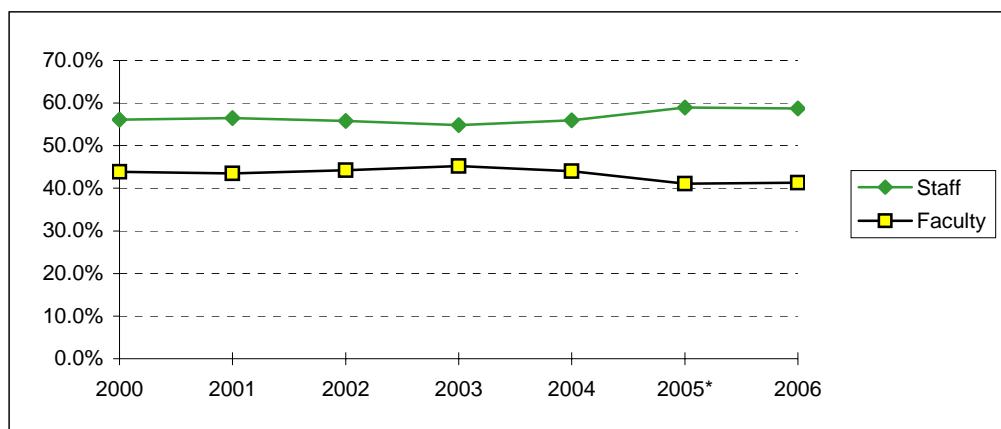


**Institutional Staff
Fall 2000 - Fall 2006**

Fall	2000	2001	2002	2003	2004	2005*	2006
Faculty:							
Full-Time	689	725	806	851	834	755	767
Part-Time	133	116	110	144	113	155	161
Executive/Administrative:							
Full-Time	155	172	173	181	188	221	251
Part-Time	0	0	1	1	2	1	1
Other Professional:							
Full-Time	325	352	421	453	456	500	476
Part-Time	13	14	14	11	18	18	16
Technical/Paraprofessional:							
Full-Time	46	44	33	40	40	105	139
Part-Time	4	3	4	2	3	17	18
Clerical/Secretarial:							
Full-Time	372	392	399	408	396	335	332
Part-Time	58	44	39	42	39	33	27
Skilled Crafts:							
Full-Time	6	4	7	6	6	7	7
Part-Time	2	1	0	0	0	1	1
Service/Maintenance:							
Full-Time	63	61	57	58	49	58	42
Part-Time	7	6	7	5	7	10	10
Total:							
Full-Time	1656	1750	1896	1997	1969	1981	2014
Part-Time	217	184	175	205	182	235	234
Grand Total	1873	1934	2071	2202	2151	2216	2248

*2005 shifts in categorization of employees due to internal reclassification and IPEDS reporting changes.

**Percentage of Institutional Staff
Fall 2000 - Fall 2006**



Fall	2000	2001	2002	2003	2004	2005*	2006
Staff	56.1%	56.5%	55.8%	54.8%	56.0%	58.9%	58.7%
Faculty	43.9%	43.5%	44.2%	45.2%	44.0%	41.1%	41.3%

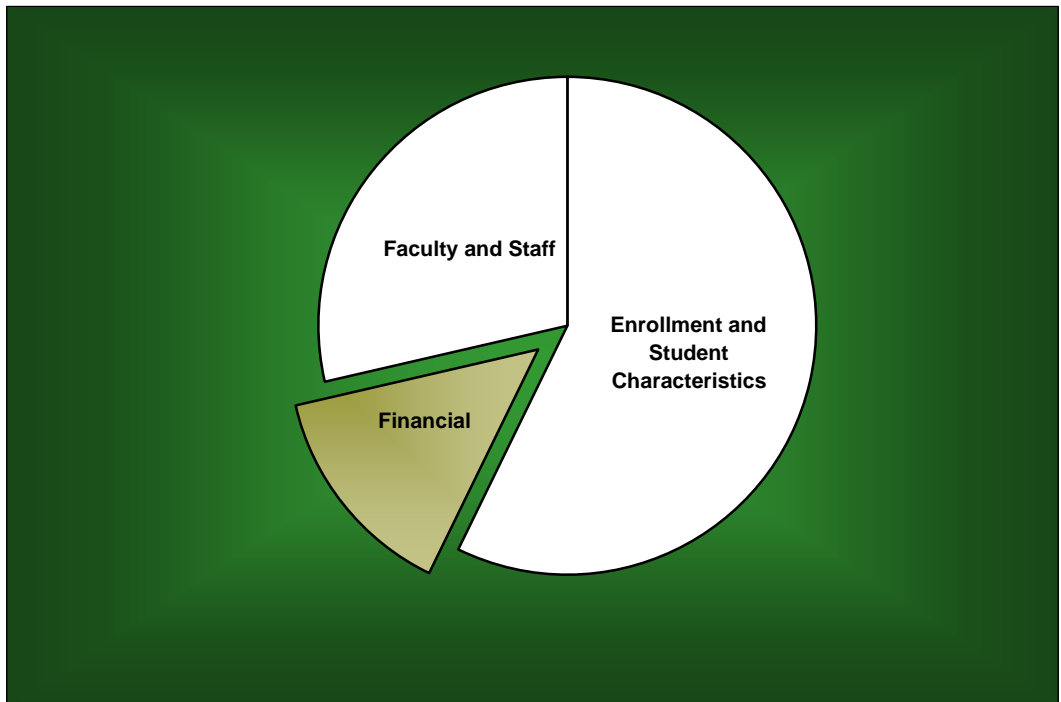
**Full-Time Faculty by Religious Affiliation
Fall 2000 - Fall 2006**

Fall	2000	2001	2002	2003	2004	2005	2006
Assembly of God	1	1	1	1	1	1	1
Baptist	315	331	381	401	390	375	368
Catholic	51	48	61	73	78	79	81
Church of Christ	16	16	21	20	20	18	22
Disciples of Christ	11	13	14	15	14	11	11
Episcopalian	45	47	51	53	52	54	56
Lutheran	38	40	41	46	46	47	46
Methodist	71	78	81	80	79	78	75
Non-/Inter-Denominational	16	16	17	17	21	24	24
Presbyterian	41	46	49	50	51	49	54
Other / Unspecified	57	61	60	64	62	60	66
Total	662	697	777	820	814	796	804

**Full-Time Staff by Religious Affiliation
Fall 2000 - Fall 2006**

Fall	2000	2001	2002	2003	2004	2005	2006
Assembly of God	6	7	7	11	10	9	8
Baptist	507	569	594	614	592	618	612
Catholic	86	100	110	112	117	108	117
Church of Christ	32	35	37	34	33	35	36
Disciples of Christ	17	18	20	21	19	18	16
Episcopalian	15	17	26	26	30	26	21
Lutheran	37	40	36	35	35	35	40
Methodist	99	109	110	115	109	110	117
Non/Inter-Denominational	24	20	42	58	64	63	81
Presbyterian	21	25	28	25	22	27	33
Other / Unspecified	123	85	80	100	95	96	98
Total	967	1025	1090	1151	1126	1145	1179

Financial



**Undergraduate Tuition and Other Semester Charges
2000-01 through 2006-07**

	2000-01	2001-02	2002-03	2003-04	2004-05	2005-06	2006-07
UG Grandfathered Tuition per Hour (8)	\$355.00	\$379.00	\$405.00	\$432.00	\$461.00	\$490.00	
Increase from Prior Year	7.9%	6.8%	6.9%	6.7%	6.7%	6.3%	
UG Tuition per Semester Hour (9)			\$654.00	\$698.00	\$746.00	\$794.00	\$857.00
Increase from Prior Year				6.7%	6.9%	6.4%	7.9%
UG Flat Tuition Rate (7)			\$15,700	\$16,750	\$17,900	\$19,050	\$20,574
Increase from Prior Year				6.7%	6.9%	6.4%	8.0%
Application Fee (UG)	35.00	35.00	35.00	35.00	35.00	50.00	50.00
Applied Music Fee(1)	110.00	117.00	125.00	133.00	142.00	151.00	163.00
Change-of-Course Fee	20.00	20.00	20.00	20.00	20.00	20.00	20.00
Chapel-Forum Fee	25.00	25.00	25.00	30.00	50.00	55.00	55.00
Credit by Baylor Exam Fee	177.50	189.50	203.00	216.00	230.00	245.00	265.00
General Student Fee	524.00	590.00	625.00	690.00	745.00	800.00	1,070.00
Enrollment Deposit (2)	100.00	100.00	100.00	100.00	100.00	100.00	100.00
Lab/Course Fees (3)	25.00	25.00	25.00	35.00	50.00	50.00	50.00
Late Registration Fee (4)	20.00	20.00	20.00	20.00	30.00	50.00	50.00
Student Life Fee	1.00	1.00	0.00	0.00	0.00	0.00	0.00
Technology Fee (10)	95.00	101.00	107.00	150.00	195.00	210.00	0.00
Vehicle Registration Fee (5)	170.00	175.00	175.00	175.00	175.00	175.00	175.00
Room (Freshmen in Penland/Collins)	1,124.00	1,295.00	1,364.00	1,464.00	1,560.00	1,673.00	1,797.00
Increase from Prior Year	7.0%	15.2%	5.3%	7.3%	6.6%	7.2%	7.4%
Board (6)	1,383.44	1,460.29	1,493.18	1,476.53	1,524.16	1,569.63	1,669.63
Increase from Prior Year	3.1%	5.6%	2.3%	-1.1%	3.2%	3.0%	6.4%

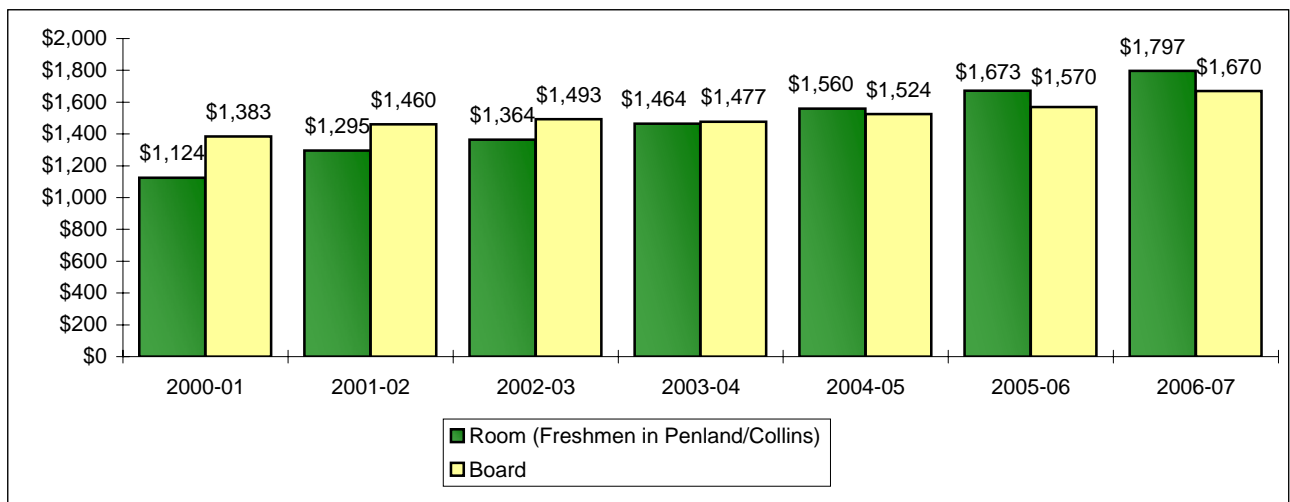
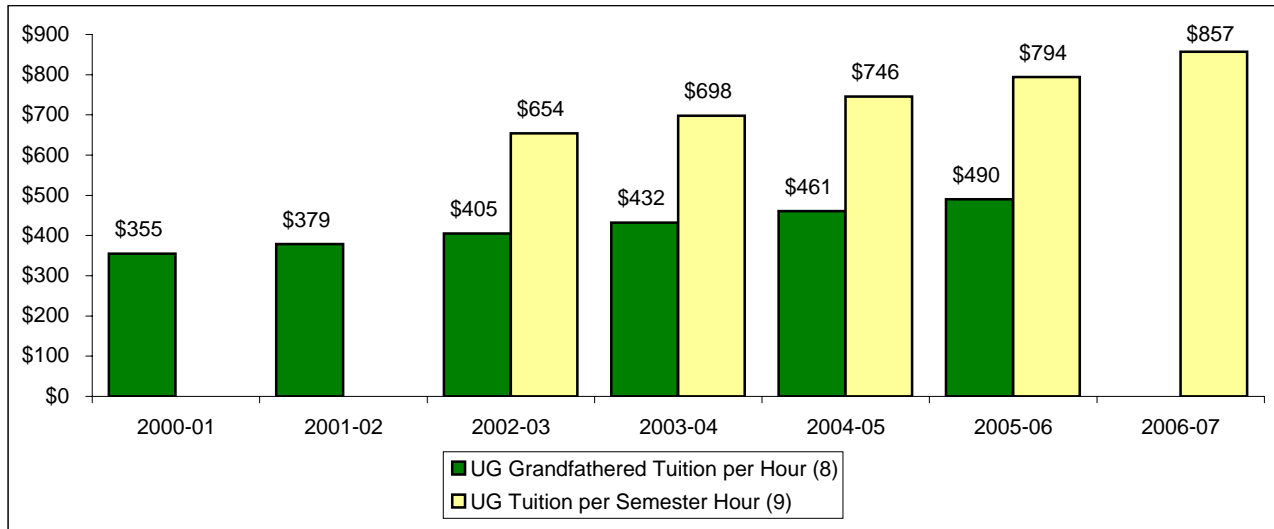
Increase in Semester Charges from 2002-03 to 2006-07:

Tuition, per semester hour	31.0%
Room	31.7%
Board	11.8%

Notes:

- (1) Supplemental charge per semester for one 30-minute lesson per week.
- (2) The Enrollment Deposit is paid to assure enrollment place and is applied on the student's first semester bill.
- (3) Minimum lab fee is noted; some courses may be higher.
- (4) Minimum charges are noted; charges vary.
- (5) Annual automobile fee (September - August).
- (6) For 1997-98 through 2000-2001, Board rate reflects the 20-meal plan, per semester, including tax. For 2001-02 through 2003-04, Board rate reflects the "Classic - 16 Plus Meal Plan," per semester, including tax. The 2003-04 through 2005-06 Board rate reflects the "Classic -16 Meal Plan" but meal plan does not include BearBucks. The 2006-07 Board rate reflects the "Classic - 16 Meal Plan + \$100 Dining Dollars."
- (7) Beginning in 2002-03, a flat tuition rate was instituted for new undergraduate students taking 12 or more hours per semester (Fall and Spring).
- (8) Beginning in 2002-03, the tuition per semester hour rate is applicable for students who were enrolled at Baylor prior to June 1, 2002 (grandfathered rate). The grandfathered tuition rate was discontinued after the 2005-06 fiscal year.
- (9) Tuition per semester hour for new students taking less than 12 hours.
- (10) Technology fee is now combined with General Student Fee.

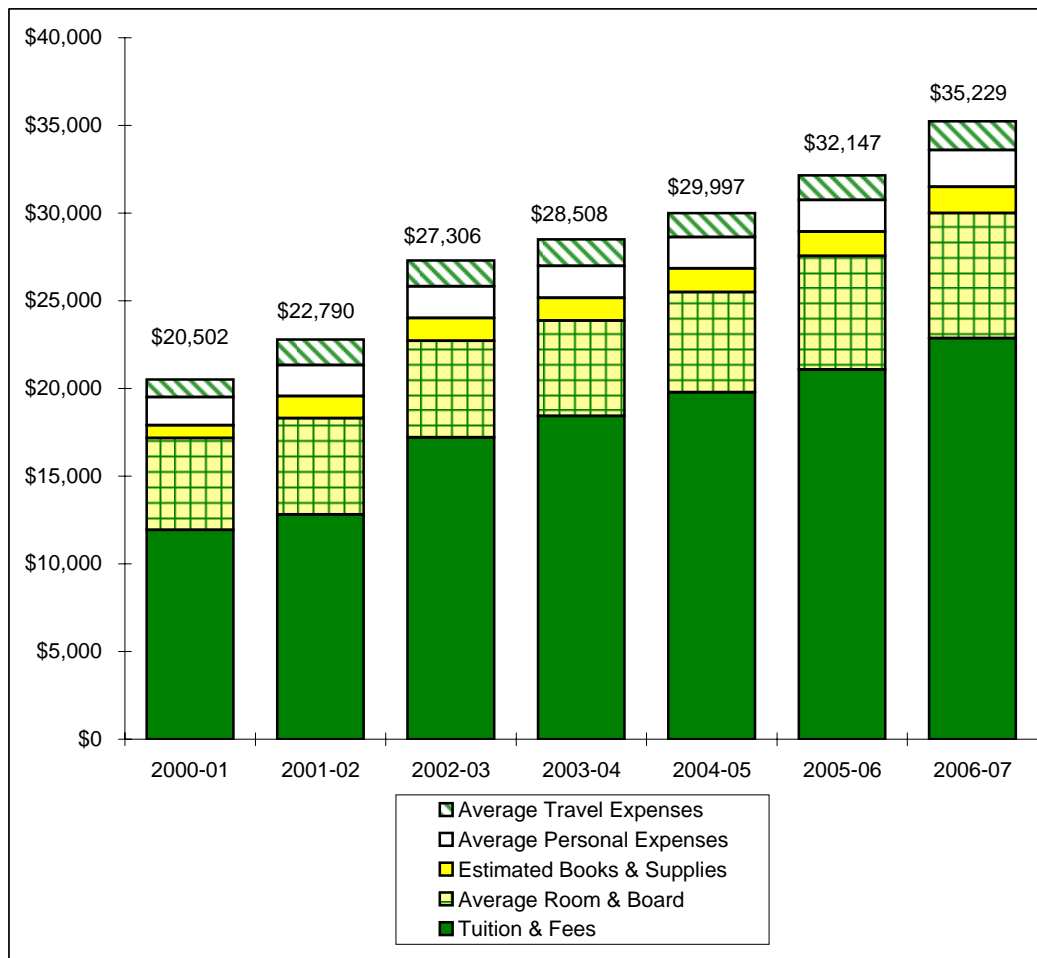
Tuition, Room and Board Charges 2000-01 through 2006-07



See notes on page 28.

Annual Undergraduate Student Cost Profile 2000-01 through 2006-07

	2000-01	2001-02	2002-03	2003-04	2004-05	2005-06	2006-07
Tuition & Fees	\$11,940	\$12,804	\$17,214	\$18,430	\$19,780	\$21,070	\$22,869
Average Room & Board	5,238	5,494	5,514	5,434	5,713	6,485	7,125
Estimated Books & Supplies	716	1,256	1,280	1,298	1,356	1,382	1,502
Average Personal Expenses	1,616	1,772	1,806	1,832	1,778	1,813	2,108
Average Travel Expenses	992	1,464	1,492	1,514	1,370	1,397	1,625
Average Total Cost	\$20,502	\$22,790	\$27,306	\$28,508	\$29,997	\$32,147	\$35,229
Increase from Prior Year	6.7%	11.2%	19.8%	4.4%	5.2%	7.2%	9.6%



Note: In 2002-03 a flat tuition rate was instituted for new students taking 12 or more hours per semester (Fall and Spring).

**Operating Funds
1999-00 through 2005-06**

Sources of Revenues

	1999-00	2000-01	2001-02	2002-03	2003-04	2004-05	2005-06
Tuition & Fees	\$145,105,566	\$161,790,383	\$180,194,091	\$205,208,253	\$228,672,157	\$253,947,979	\$286,798,199
Acad Support/Research/PS	6,926,099	10,081,101	6,107,120	4,915,658	3,957,986	4,106,405	4,667,051
BGCT Appropriation	4,078,147	4,022,186	3,822,637	3,846,290	3,832,014	3,721,275	3,517,856
Endowment Income	12,678,477	15,075,011	13,698,822	17,771,203	21,035,555	22,429,350	22,661,361
Investment Income	2,826,020	3,772,096	1,635,000	919,715	635,674	1,333,628	3,913,218
Other Sources	13,710,214	11,459,110	12,921,478	12,434,554	13,900,817	15,406,112	14,707,559
Auxiliary Enterprises	36,679,685	39,285,440	40,185,133	39,019,089	37,156,315	40,774,330	45,675,394
Total Revenues	\$222,004,208	\$245,485,327	\$258,564,281	\$284,114,762	\$309,190,518	\$341,719,079	\$381,940,638

Sources of Revenues as a Percentage of Total Revenues

	1999-00	2000-01	2001-02	2002-03	2003-04	2004-05	2005-06
Tuition & Fees	65.4%	65.9%	69.6%	72.1%	74.1%	74.4%	75.2%
Acad Support/Research/PS	3.1%	4.1%	2.4%	1.7%	1.3%	1.2%	1.2%
BGCT Appropriation	1.8%	1.6%	1.5%	1.4%	1.2%	1.1%	0.9%
Endowment Income	5.8%	6.1%	5.3%	6.3%	6.8%	6.6%	5.9%
Investment Income	1.3%	1.5%	0.6%	0.3%	0.2%	0.4%	1.0%
Other Sources	6.2%	4.7%	5.0%	4.4%	4.5%	4.5%	3.9%
Auxiliary Enterprises	16.5%	16.0%	15.5%	13.6%	11.9%	11.9%	12.0%
Total Revenues	100.0%	100.0%	100.0%	100.0%	100.0%	100.0%	100.0%

**Operating Funds (Continued)
1999-00 through 2005-06**

Expenditures by Function

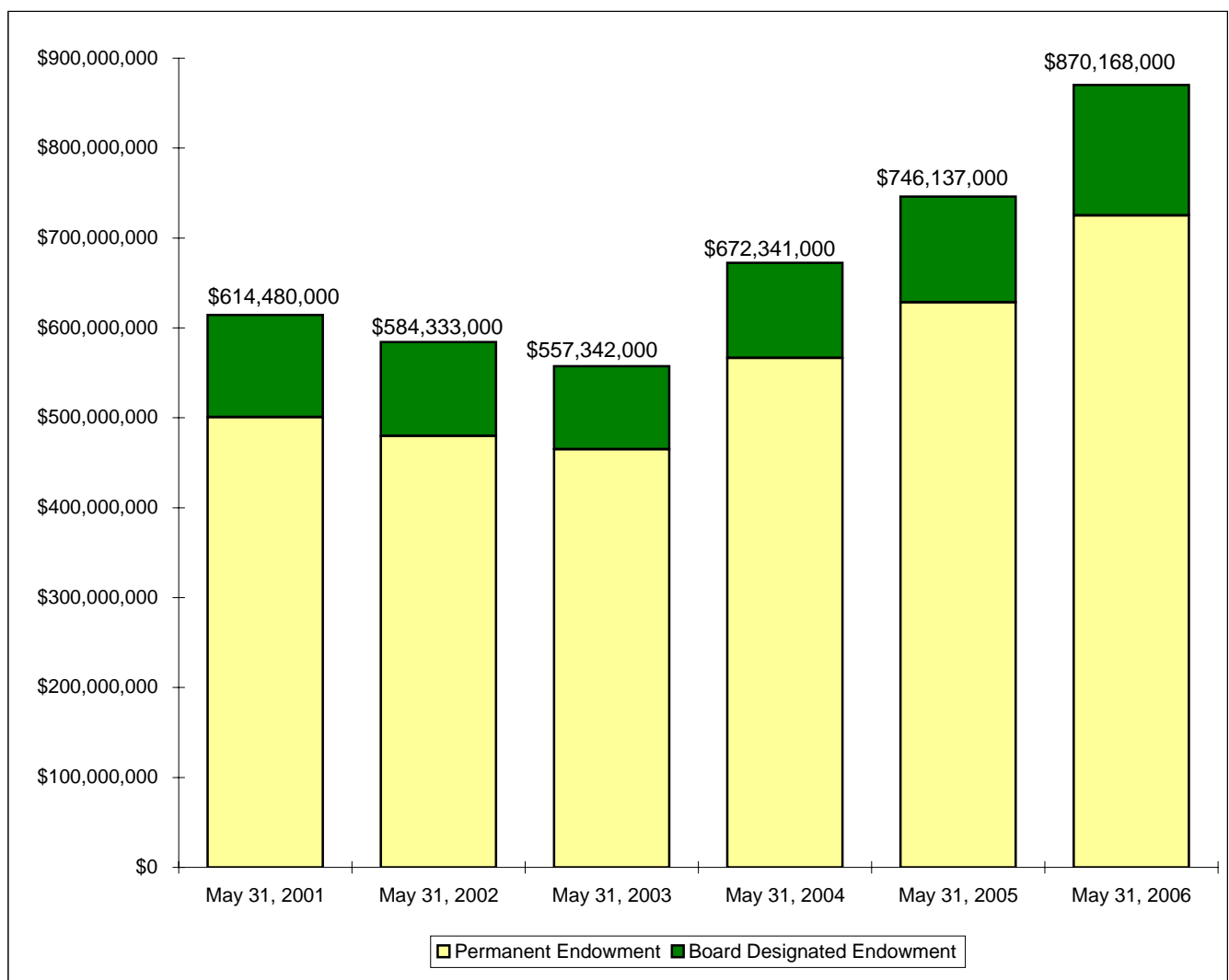
	1999-00	2000-01	2001-02	2002-03	2003-04	2004-05	2005-06
Instruction	\$78,132,224	\$82,621,971	\$92,355,519	\$102,617,463	\$109,586,442	\$113,783,712	\$114,841,749
Acad Support/Research/PS	18,662,339	20,363,667	23,117,511	24,666,809	24,957,815	25,637,473	26,511,262
Student Services	11,165,359	11,798,452	12,849,698	14,779,593	15,177,946	19,276,167	19,926,881
Plant Operation/Maintenance	14,220,616	16,020,525	19,608,685	22,537,742	33,373,695	36,228,820	39,746,168
Institutional Support	26,511,017	28,859,740	35,095,190	37,986,315	37,244,481	37,977,656	42,191,169
Scholarships & Fellowships	18,955,785	21,932,892	27,598,589	37,529,834	47,065,860	58,837,752	72,429,465
Auxiliary Enterprises	37,884,043	42,264,498	45,428,872	46,541,207	43,784,647	45,499,135	51,076,247
Discretionary Transfers	16,453,711	21,600,154	2,497,935	(2,560,253)	(2,018,647)	4,469,901	15,206,432
Total Expenditures	221,985,094	245,461,899	258,551,999	284,098,710	309,172,239	341,710,616	381,929,373
Excess Revenues	\$19,114	\$23,428	\$12,282	\$16,052	\$18,279	\$8,463	\$11,265

**Gifts/Private Grants
Percentage of Total Expenditures**

	1999-00	2000-01	2001-02	2002-03	2003-04	2004-05	2005-06
Instruction	35.2%	33.7%	35.7%	36.1%	35.4%	33.3%	30.1%
Acad Support/Research/PS	8.4%	8.3%	8.9%	8.7%	8.1%	7.5%	6.9%
Student Services	5.0%	4.8%	5.0%	5.2%	4.9%	5.6%	5.2%
Plant Operation/Maintenance	6.4%	6.5%	7.6%	7.9%	10.8%	10.6%	10.4%
Institutional Support	11.9%	11.8%	13.6%	13.4%	12.0%	11.1%	11.0%
Scholarships & Fellowships	8.5%	8.9%	10.7%	13.2%	15.2%	17.2%	19.0%
Auxiliary Enterprises	17.1%	17.2%	17.6%	16.4%	14.2%	13.3%	13.4%
Discretionary Transfers	7.4%	8.8%	1.0%	-0.9%	-0.7%	1.3%	4.0%
Total Expenditures	100.0%	100.0%	100.0%	100.0%	100.0%	100.0%	100.0%

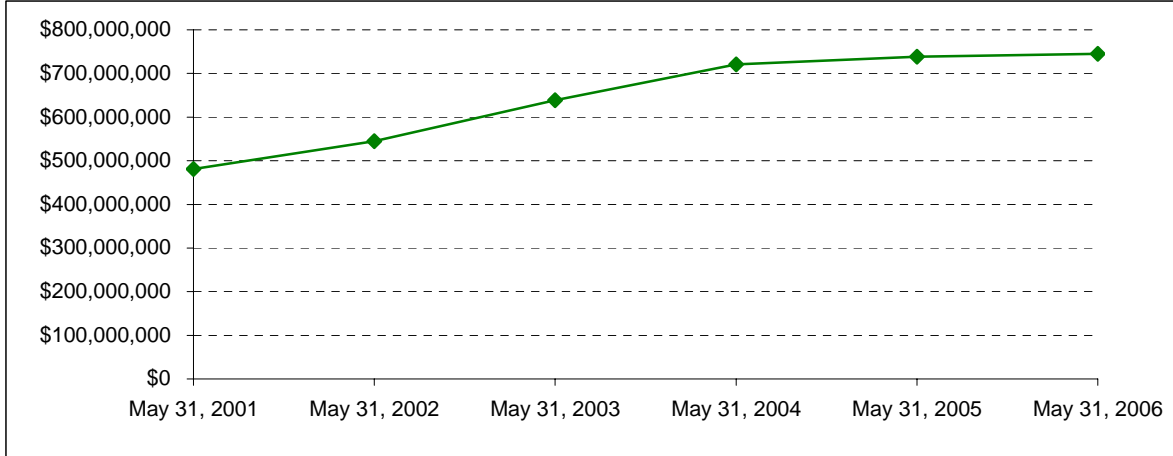
**Endowment Fund Balance - Market Value
May 31, 2001 through May 31, 2006**

	May 31, 2001	May 31, 2002	May 31, 2003	May 31, 2004	May 31, 2005	May 31, 2006
Permanent Endowment	\$500,739,000	\$479,728,000	\$465,189,000	\$566,655,000	\$628,503,000	\$725,266,000
Board Designated Endowment	113,741,000	104,605,000	92,153,000	105,686,000	117,634,000	144,902,000
Total Endowment	\$614,480,000	\$584,333,000	\$557,342,000	\$672,341,000	\$746,137,000	\$870,168,000
Permanent Endowment	81.5%	82.1%	83.5%	84.3%	84.2%	83.3%
Board Designated Endowment	18.5%	17.9%	16.5%	15.7%	15.8%	16.7%
Total Endowment	100.0%	100.0%	100.0%	100.0%	100.0%	100.0%



**Property, Plant and Equipment*
May 31, 2001 through May 31, 2006**

Property, Plant & Equipment	May 31, 2001	May 31, 2002	May 31, 2003	May 31, 2004	May 31, 2005	May 31, 2006
	\$480,878,000	\$544,541,000	\$638,914,000	\$720,816,000	\$738,186,000	\$744,986,000



*Does not reflect the impact of accumulated depreciation.

	May 31, 2001	May 31, 2002	May 31, 2003	May 31, 2004	May 31, 2005	May 31, 2006
Net Assets	\$945,490,000	\$899,185,000	\$850,735,000	\$989,916,000	\$1,059,904,000	\$1,230,176,000
Total Assets	\$1,056,374,000	\$1,238,399,000	\$1,230,551,000	\$1,363,089,000	\$1,426,295,000	\$1,638,403,000

