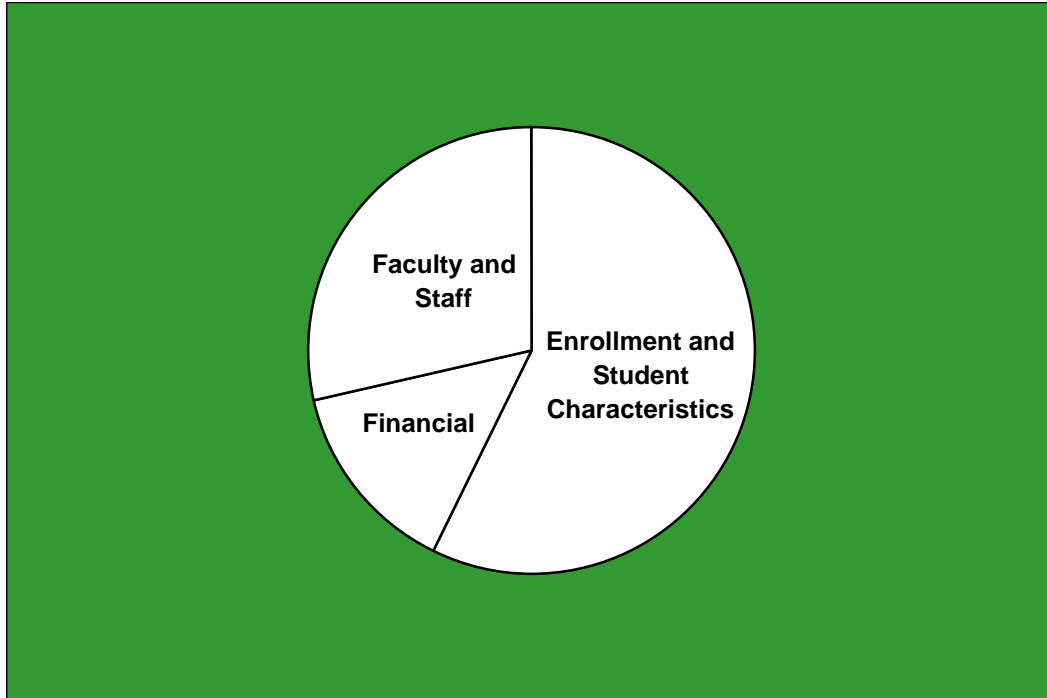


BAYLOR TRENDS



Fall 1999 - Fall 2005

Volume XVII

Prepared by the Office of Institutional Research and Testing, Spring 2006

<http://www.baylor.edu/irt/>

Table of Contents

	Page
ENROLLMENT AND STUDENT CHARACTERISTICS	
<i>New Freshman Applications and Enrollment</i>	1
<i>Transfer Applications and Enrollment</i>	1
<i>New Freshman Applications and Enrollment by Gender</i>	2
<i>New Freshman and Transfer Student Enrollment</i>	3
<i>Enrollment by Classification</i>	4
<i>Enrollment</i>	5
<i>Enrollment by Gender, Waco Campus</i>	6
<i>Enrollment by Religious Affiliation, Waco Campus</i>	7
<i>Baptist Percentage, Waco Campus</i>	7
<i>Enrollment by Racial/Ethnic Group</i>	8
<i>Racial/Ethnic Minority Percentage</i>	8
<i>Leading Texas Counties of Origin</i>	9
<i>Leading States of Origin</i>	9
<i>Percentage from Top Four Texas Counties</i>	10
<i>Students from Texas by Three-Digit Zip Code Area</i>	10
<i>Texas Enrollment by County</i>	11
<i>Enrollment by State</i>	12
<i>Countries Represented by Nonresident Aliens</i>	13
<i>Enrollment by Unit</i>	14
<i>Enrollment Percentage by Unit</i>	15
<i>Student Credit Hours by Unit, Waco Campus</i>	16
<i>Retention of First-Time Freshman Classes</i>	17
<i>Distribution of Degrees</i>	18
<i>Summary of Degrees Awarded</i>	19
<i>Degree Programs</i>	20
 FACULTY AND STAFF	
<i>Full-Time Faculty Positions</i>	22
<i>Highest Degree Earned by Full-Time Faculty</i>	22
<i>Percentage of Full-Time Faculty with Tenure</i>	23
<i>Average Salaries of Full-Time Instructional Faculty on Academic Year Contracts</i>	24
<i>Average Compensation of Full-Time Instructional Faculty on Academic Year Contracts</i>	25
<i>Institutional Staff</i>	26
<i>Percentage of Institutional Staff</i>	26
<i>Full-Time Faculty by Religious Affiliation</i>	27
<i>Full-Time Staff by Religious Affiliation</i>	27

FINANCIAL

Undergraduate Tuition and Other Semester Charges 28

Undergraduate Tuition, Room and Board Charges..... 29

Annual Undergraduate Student Cost Profile..... 30

Operating Funds:

Sources of Revenues..... 31

Sources of Revenue as a Percentage of Total Revenues..... 31

Expenditures by Functions..... 32

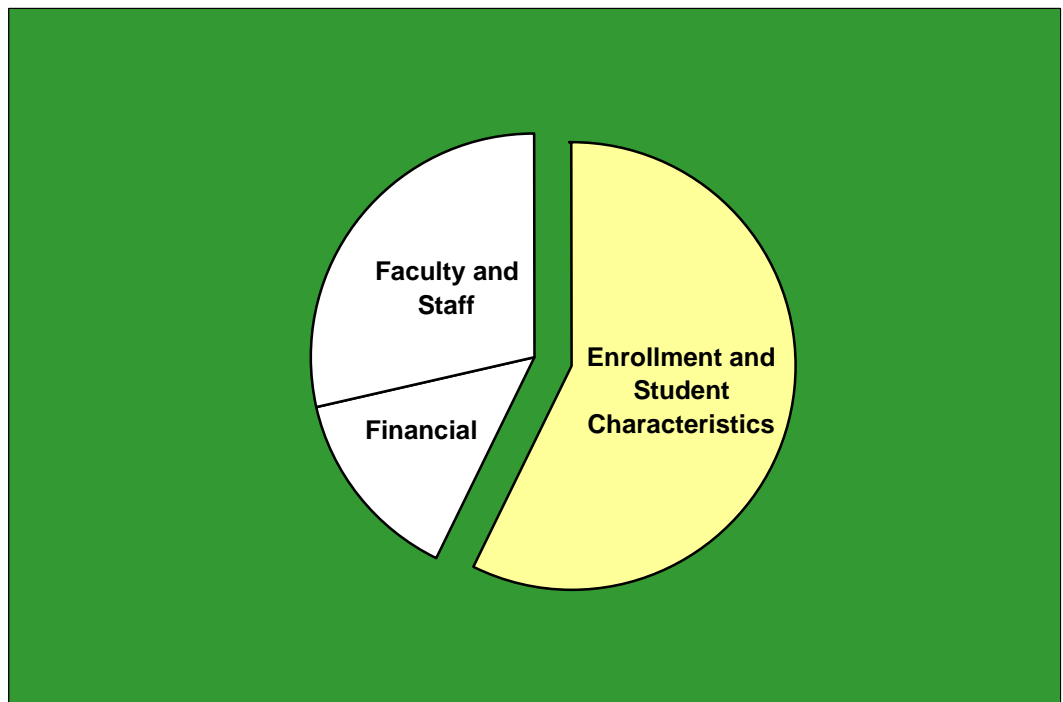
Expenditures by Functions as a Percentage of Total Expenditures 32

Endowment Fund Balance - Market Value..... 33

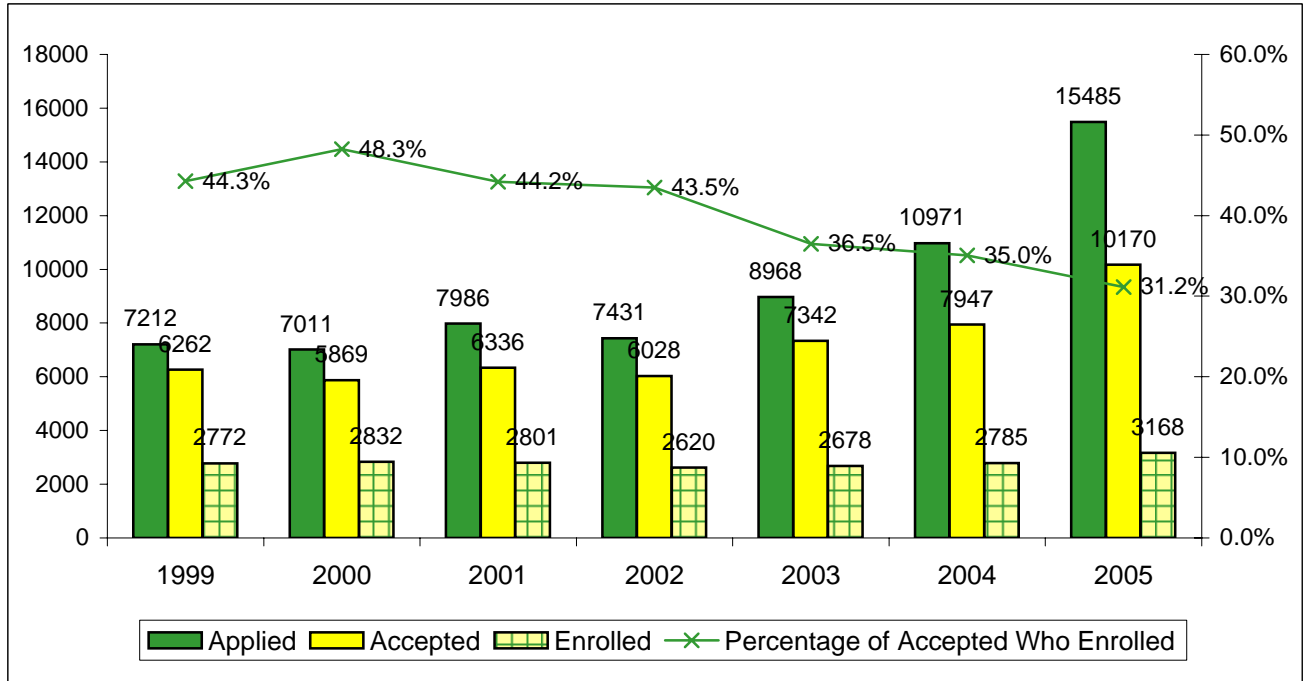
Property, Plant and Equipment 34

Assets 34

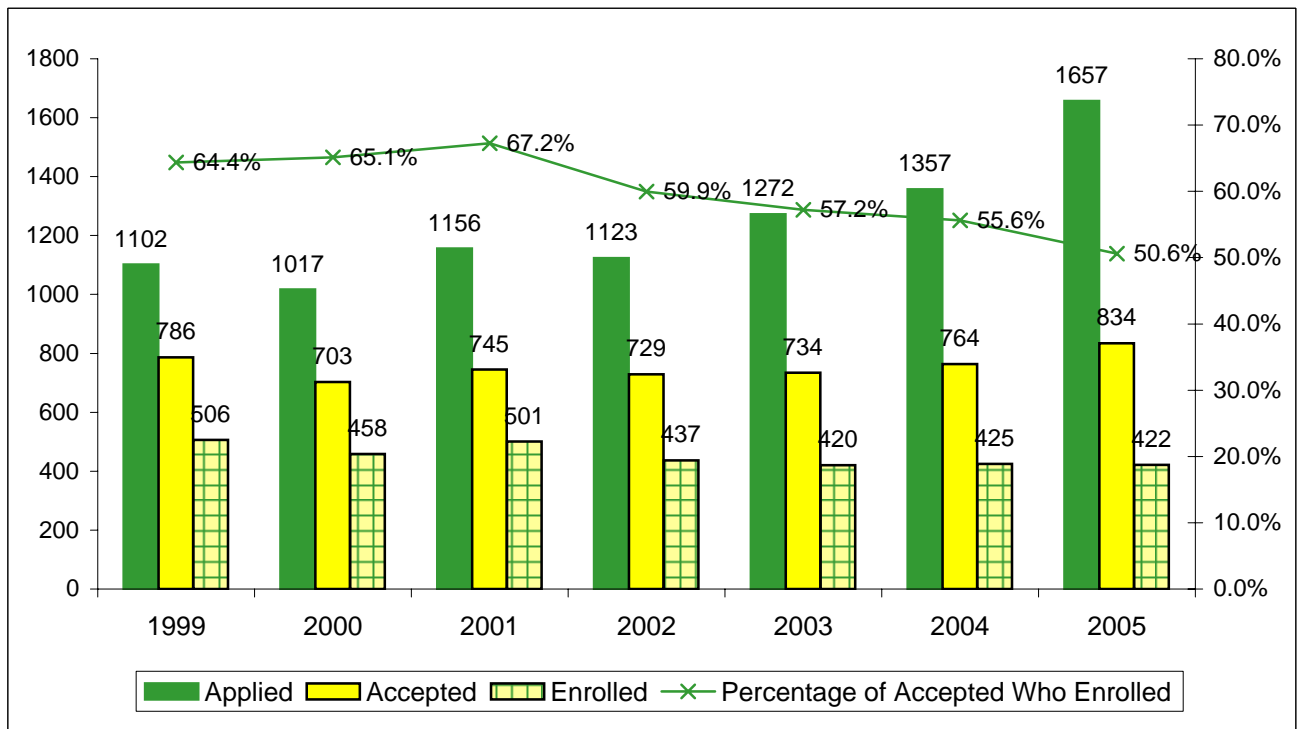
Enrollment and Student Characteristics



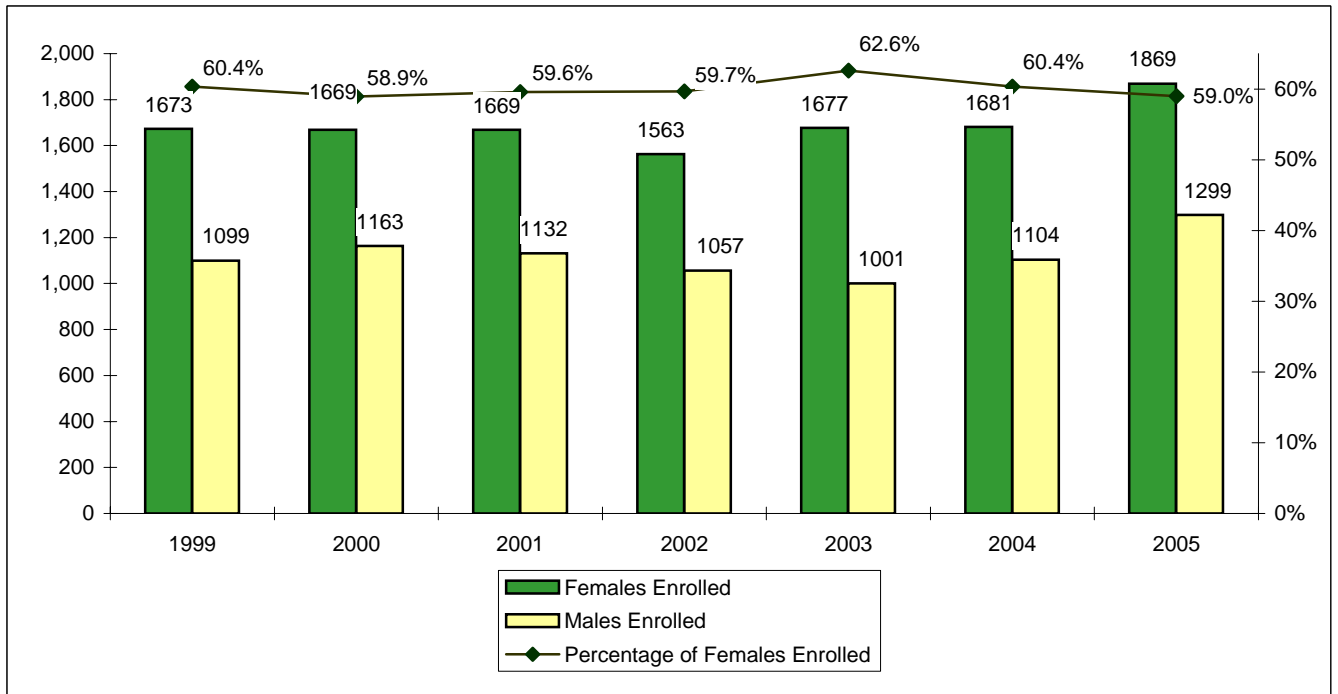
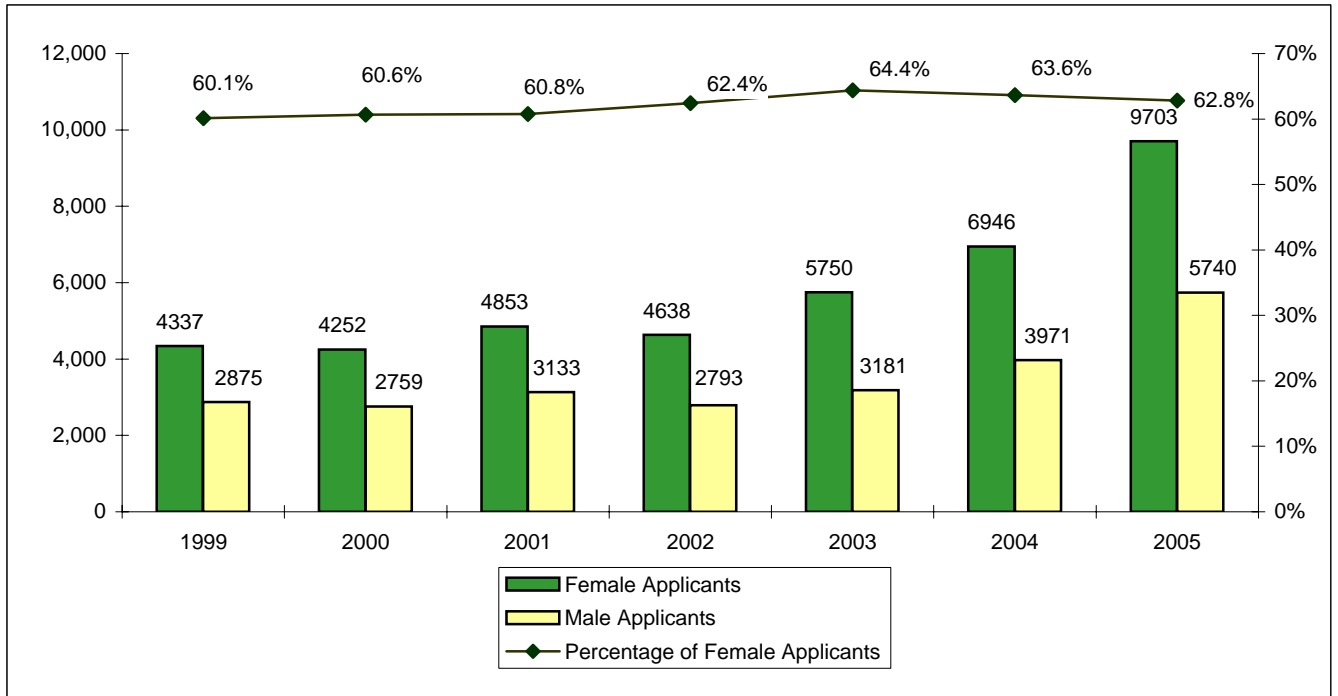
**New Freshman Applications, Acceptances and Enrollment
Fall 1999 - Fall 2005**



**Transfer Applications, Acceptances and Enrollment
Fall 1999 - Fall 2005**

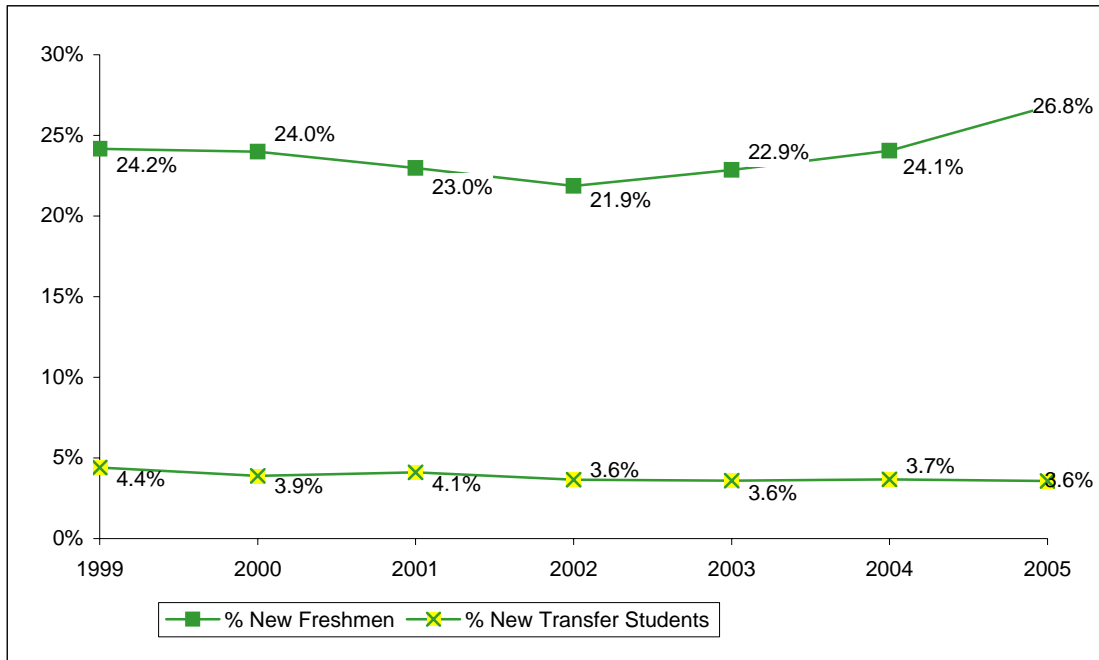


New Freshman Applications and Enrollment by Gender*
Fall 1999 - Fall 2005



*Totals of male and female applicants may not equal the total applicants displayed on the previous page, because there are some applicants who do not provide their gender.

**New Freshman and Transfer Student Enrollment
Fall 1999 - Fall 2005**



	Fall	1999	2000	2001	2002	2003	2004	2005
New Freshmen		2,772	2,832	2,801	2,620	2,678	2,785	3,168
New Transfer Students		506	458	501	437	420	425	422
Undergraduate Enrollment		11,472	11,806	12,190	11,987	11,712	11,580	11,825
% New Freshmen		24.2%	24.0%	23.0%	21.9%	22.9%	24.1%	26.8%
% New Transfer Students		4.4%	3.9%	4.1%	3.6%	3.6%	3.7%	3.6%

Notes:

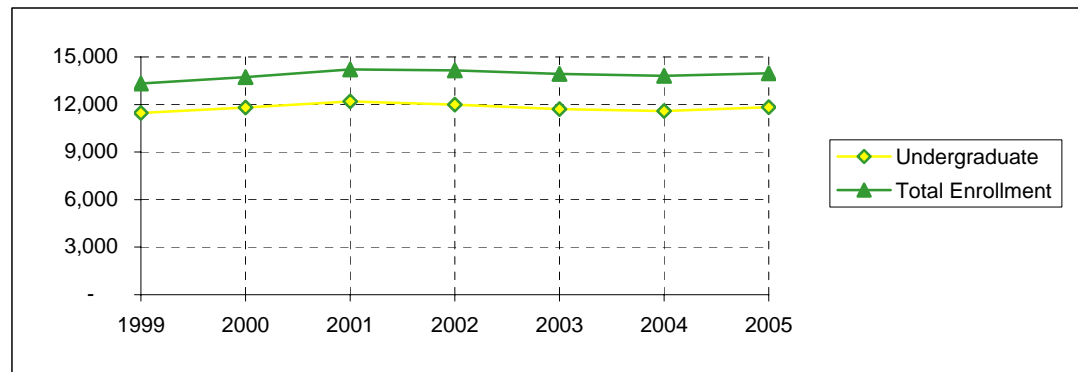
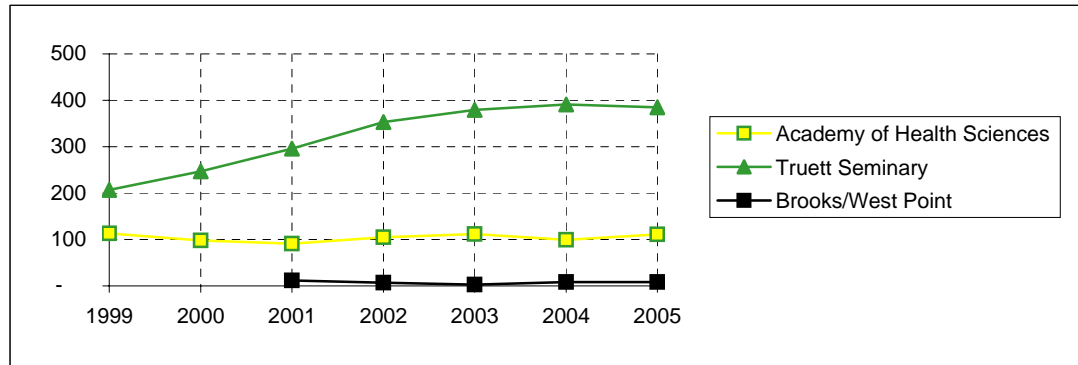
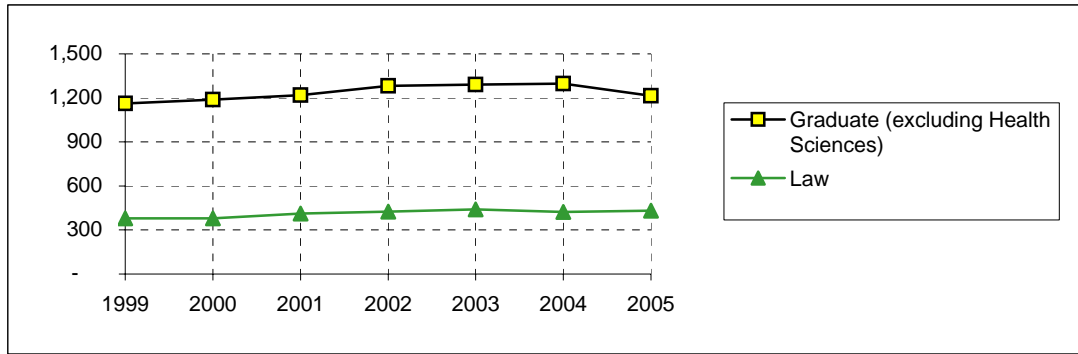
1. Freshmen who enter the University in the fall or preceding summer term are counted as "new freshmen." Similarly, transfer students entering in the fall or preceding summer term are counted as "transfer students" for the fall semester.

2. "Transfer students" refers to the entering summer/fall group of transfer students. For example, in Fall 2003 the 420 entering transfer students comprised 3.6% of the 11,712 undergraduates. However, for Fall 2003 the total number of enrolled undergraduates who had transferred into the University consisted of (a) transfers who entered in Fall 2003 and (b) students who transferred into the University in previous academic years. Generally, the total enrollment of students who had entered as transfer students is approximately 15% of the undergraduate student body.

**Enrollment by Classification
Fall 1999- Fall 2005**

	Fall	1999	2000	2001	2002	2003	2004	2005
Freshman		3,534	3,678	3,613	3,309	3,382	3,430	3,791
Sophomore		2,619	2,565	2,686	2,679	2,506	2,391	2,529
Junior		2,244	2,516	2,565	2,595	2,462	2,425	2,295
Senior		2,956	2,916	3,194	3,297	3,262	3,223	3,080
Special		29	26	23	22	-	-	-
Postbaccalaureate		90	105	109	85	43	79	84
Nondegree		-	-	-	-	57	32	46
TOTAL UNDERGRADUATE		11,472	11,806	12,190	11,987	11,712	11,580	11,825
Master's		760	788	802	843	845	834	720
Doctoral		373	379	397	416	427	445	473
Graduate Transient/Nondegree		6	6	11	10	10	7	10
Special Graduate		18	8	-	-	-	-	-
Graduate Professional		5	8	9	12	9	11	11
TOTAL "WACO" GRADUATE		1,162	1,189	1,219	1,281	1,291	1,297	1,214
Seminary Master's		190	222	260	318	337	345	344
Seminary Doctoral		17	25	34	35	41	43	39
Seminary Nondegree		-	-	2	-	1	3	2
TOTAL SEMINARY		207	247	296	353	379	391	385
School of Law		380	379	413	426	440	424	432
Academy of Health Sciences		113	98	91	105	112	99	111
Brooks/West Point		-	-	12	7	3	8	8
TOTAL ENROLLMENT		13,334	13,719	14,221	14,159	13,937	13,799	13,975

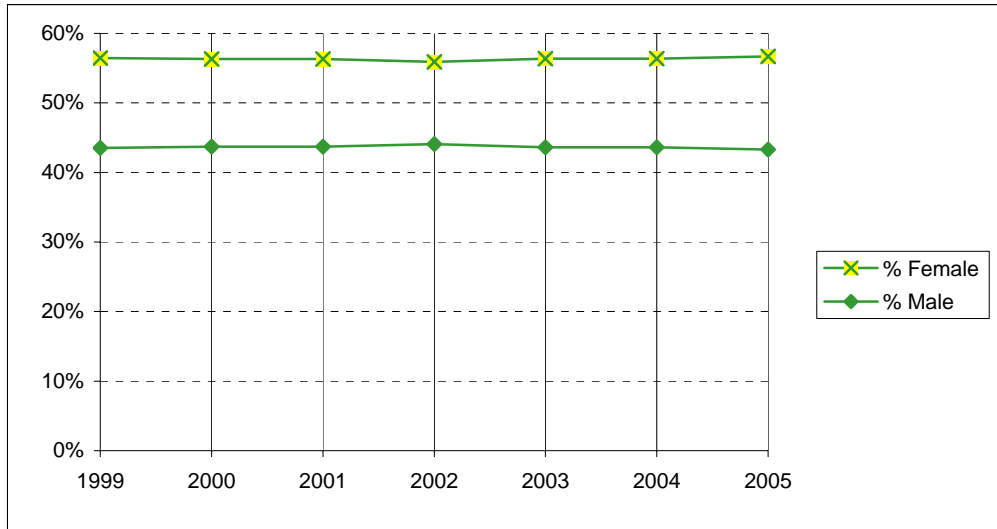
**Enrollment
Fall 1999 - Fall 2005**



Fall	1999	2000	2001	2002	2003	2004	2005
Undergraduate	11,472	11,806	12,190	11,987	11,712	11,580	11,825
Graduate (excluding Health Sciences)	1,162	1,189	1,219	1,281	1,291	1,297	1,214
Law	380	379	413	426	440	424	432
Truett Seminary	207	247	296	353	379	391	385
SUBTOTAL	13,221	13,621	14,118	14,047	13,822	13,692	13,856
Academy of Health Sciences	113	98	91	105	112	99	111
Brooks/West Point			12	7	3	8	8
TOTAL ENROLLMENT	13,334	13,719	14,221	14,159	13,937	13,799	13,975

Source: IRT.

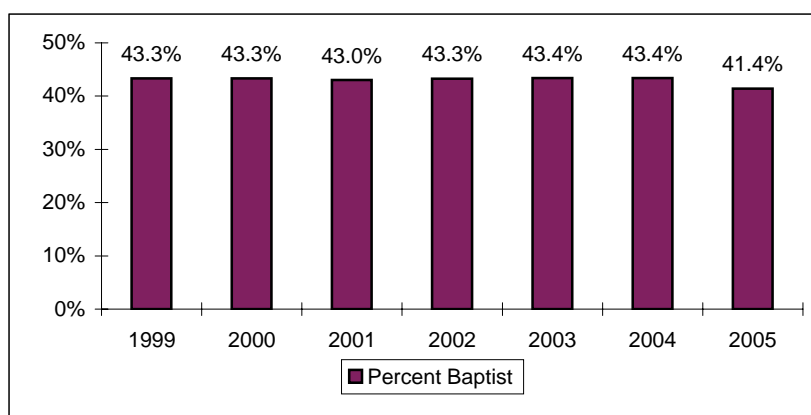
**Enrollment by Gender
(Excluding Health Sciences)
Fall 1999 - Fall 2005**



Fall	1999	2000	2001	2002	2003	2004	2005
Female	7,467	7,670	7,950	7,854	7,790	7,717	7,854
Male	5,754	5,951	6,168	6,193	6,032	5,975	6,002
Total (excluding Health Sciences)	13,221	13,621	14,118	14,047	13,822	13,692	13,856
% Female	56.5%	56.3%	56.3%	55.9%	56.4%	56.4%	56.7%
% Male	43.5%	43.7%	43.7%	44.1%	43.6%	43.6%	43.3%

**Enrollment by Religious Affiliation (Excluding Health Sciences)
Fall 1999 - Fall 2005**

Fall	1999	2000	2001	2002	2003	2004	2005
African Methodist Episcopal	-	-	-	-	1	4	7
Anglican - Church of England	-	-	-	-	-	7	11
Assembly of God	153	135	135	124	125	136	130
Atheist	-	-	-	-	-	14	16
Baptist	5,727	5,903	6,076	6,076	5,994	5,941	5,738
Buddhist	72	70	77	71	60	77	76
Catholic	1,619	1,674	1,694	1,659	1,591	1,765	1,833
Christian Church	-	-	-	-	16	59	84
Christian Scientist	5	2	10	13	12	16	15
Church of Christ	254	287	279	283	253	269	257
Church of God	19	19	25	21	29	29	27
Church of the Nazarene	34	27	28	25	33	37	28
Congregational Church	16	16	23	23	21	19	17
Disciples of Christ (Christian)	89	88	73	70	76	80	86
Dutch Reformed	-	-	-	-	-	-	2
Eastern Orthodox	27	29	31	32	35	32	35
Episcopalian	302	310	307	294	249	251	256
Evangelical Free Church	-	-	-	-	3	12	25
Four Square Gospel	7	10	9	10	11	11	12
Full Gospel	-	-	-	-	-	2	4
Greek Orthodox	-	-	-	-	4	6	7
Hindu	77	83	88	85	89	105	115
Independent Bible Church	-	-	-	-	1	12	19
Interdenominational	429	466	460	477	380	266	167
Jehovah's Witness	14	12	11	10	12	10	11
Jewish	-	-	-	-	-	9	11
Judaism	11	9	17	14	22	23	21
Latter Day Saints (Mormon)	19	21	19	23	23	36	48
Lutheran	398	396	386	388	354	343	364
Mennonite	7	7	5	6	7	10	10
Methodist	1,163	1,203	1,251	1,280	1,219	1,133	1,099
Missionary Alliance	-	-	-	-	1	2	2
Moslem (Islam, Muslim)	77	86	100	109	109	119	117
Non-Denominational	-	102	251	270	567	1,054	1,444
Pentecostal	80	88	106	115	107	100	112
Presbyterian	518	552	571	534	536	549	549
Protestant	-	-	-	-	3	27	54
Seventh Day Adventist	-	-	-	-	2	11	12
Society of Friends (Quakers)	5	4	4	3	1	2	3
Unitarian	8	9	8	6	7	6	4
United Brethren	8	6	4	4	3	-	2
United Church of Christ	-	-	-	-	-	2	6
Other/Not Specified	2,083	2,007	2,070	2,022	1,866	1,106	1,020
TOTAL RELIGION	13,221	13,621	14,118	14,047	13,822	13,692	13,856



**Enrollment by Racial / Ethnic Group*
Fall 1999 - Fall 2005**

A.

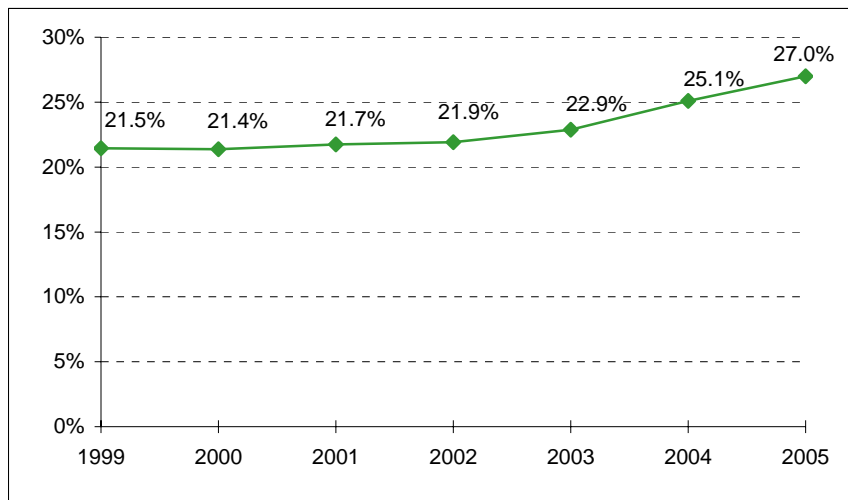
	Fall	1999	2000	2001	2002	2003	2004	2005
African American/Black		751	750	774	771	862	944	1,048
American Indian/Alaskan Native		65	64	63	75	83	80	93
Asian/Pacific Islander		847	876	903	883	865	977	1,044
Hispanic		959	967	1,051	1,078	1,077	1,133	1,284
White		10,278	10,671	11,033	10,919	10,541	10,318	10,183
Other		239	276	301	296	300	330	304
Not Specified		195	115	96	137	209	17	19
Total		13,334	13,719	14,221	14,159	13,937	13,799	13,975

B.

	Fall	1999	2000	2001	2002	2003	2004	2005
African American/Black		731	733	753	744	835	908	1,001
American Indian/Alaskan Native		64	64	63	75	82	79	92
Asian/Pacific Islander		648	664	669	660	666	770	846
Hispanic		936	939	1,017	1,045	1,040	1,094	1,237
White		10,225	10,612	10,967	10,854	10,476	10,248	10,128
Other		209	237	258	250	256	286	264
Not Specified		181	108	91	125	184	17	19
NONRESIDENT ALIEN		340	362	403	406	398	397	388
Total		13,334	13,719	14,221	14,159	13,937	13,799	13,975

*In Table B, nonresident aliens are partitioned as a group.

**Racial / Ethnic Minority Percentage
Fall 1999 - Fall 2005
(From Table A)**



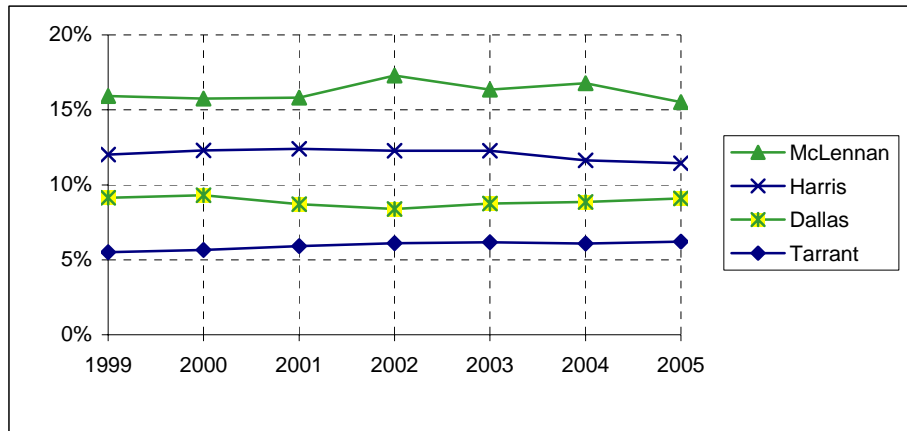
**Leading Texas Counties of Origin
Fall 1999 - Fall 2005**

Fall	1999	2000	2001	2002	2003	2004	2005
McLennan	2,124	2,161	2,248	2,448	2,279	2,315	2,169
Harris	1,601	1,687	1,763	1,738	1,711	1,605	1,599
Dallas	1,217	1,276	1,238	1,188	1,221	1,222	1,271
Tarrant	735	777	840	863	860	840	868
Bexar	528	532	521	475	438	464	486
Collin	431	489	505	490	459	457	481
Travis	283	304	326	331	372	385	405
Fort Bend	237	299	331	332	315	318	332
Montgomery	224	253	273	266	269	263	298
Bell	203	206	237	204	204	199	215
Williamson	133	125	138	154	171	197	201
Denton	131	131	136	160	171	180	196
Smith	128	123	149	147	138	146	151
Galveston	105	119	117	119	102	109	108
Gregg	134	141	144	135	145	111	106
El Paso	93	105	97	93	85	95	100
Brazoria	79	90	117	115	115	99	97
Hidalgo	94	81	79	85	83	90	96
Nueces	91	89	98	88	83	71	89
Jefferson	91	88	83	78	71	87	88
Rockwall	44	42	48	41	72	74	84
Johnson	72	76	89	75	74	65	68
Ellis				75	57	61	68
Taylor	89	94	102	100	79	84	65

**Leading States of Origin
Fall 1999 - Fall 2005**

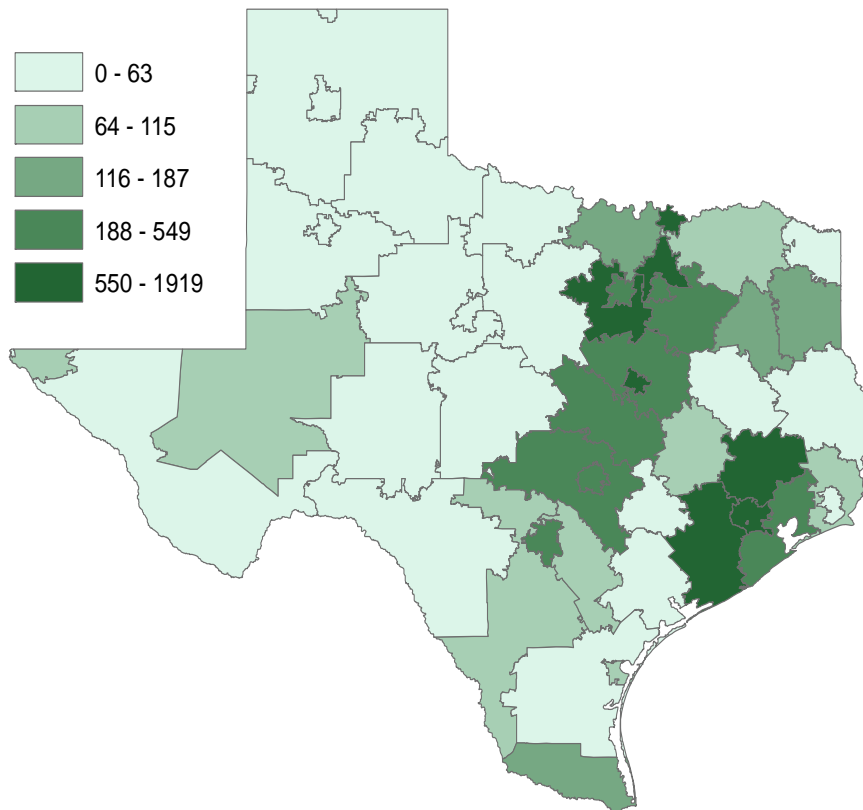
Fall	1999	2000	2001	2002	2003	2004	2005
Texas	10,726	11,128	11,553	11,613	11,316	11,233	11,349
California	268	250	246	227	238	255	252
Oklahoma	229	218	221	204	186	184	177
Colorado	134	134	138	137	129	132	145
Louisiana	146	144	163	156	145	136	145
Arkansas	113	118	132	129	133	122	105
Illinois	73	80	88	87	103	97	105
Missouri	116	114	111	110	121	101	100
Kansas	109	111	110	96	84	84	91
Florida	92	77	67	53	60	80	88
Arizona	61	57	61	57	56	62	81
New Mexico	76	63	76	69	68	70	66
Tennessee	82	84	74	72	67	65	66

Percentage From Top Four Texas Counties
Fall 1999 - Fall 2005



Fall	1999	2000	2001	2002	2003	2004	2005
McLennan	15.9%	15.8%	15.8%	17.3%	16.4%	16.8%	15.5%
Harris	12.0%	12.3%	12.4%	12.3%	12.3%	11.6%	11.4%
Dallas	9.1%	9.3%	8.7%	8.4%	8.8%	8.9%	9.1%
Tarrant	5.5%	5.7%	5.9%	6.1%	6.2%	6.1%	6.2%

Students From Texas by Three-Digit Zip Code Area
Fall 1999 - Fall 2005



**Texas Enrollment by County
Fall 2005**

	n		n		n		n		n
Anderson	15	Crane	0	Hartley	0	Madison	6	San Patricio	11
Andrews	1	Crockett	1	Haskell	2	Marion	2	San Saba	1
Angelina	21	Crosby	0	Hays	39	Martin	0	Schleicher	0
Aransas	4	Culberson	1	Hemphill	1	Mason	0	Scurry	6
Archer	0	Dallam	1	Henderson	15	Matagorda	22	Shackelford	1
Armstrong	1	Dallas	1,271	Hidalgo	96	Maverick	18	Shelby	8
Atascosa	4	Dawson	1	Hill	31	Mc Culloch	0	Sherman	1
Austin	8	De Witt	5	Hockley	3	Mc Lennan	2,169	Smith	151
Bailey	3	Deaf Smith	2	Hood	21	Mc Mullen	0	Somervell	4
Bandera	2	Delta	1	Hopkins	18	Medina	5	Starr	4
Bastrop	12	Denton	196	Houston	11	Menard	0	Stephens	7
Baylor	1	Dickens	0	Howard	6	Midland	40	Sterling	0
Bee	5	Dimmit	3	Hudspeth	0	Milam	12	Stonewall	0
Bell	215	Donley	1	Hunt	23	Mills	1	Sutton	0
Bexar	486	Duval	1	Hutchinson	6	Mitchell	3	Swisher	2
Blanco	5	Eastland	4	Irion	0	Montague	3	Tarrant	868
Borden	0	Ector	23	Jack	2	Montgomery	298	Taylor	65
Bosque	17	Edwards	0	Jackson	3	Moore	1	Terrell	0
Bowie	21	El Paso	100	Jasper	8	Morris	10	Terry	1
Brazoria	97	Ellis	68	Jeff Davis	0	Motley	0	Throckmorton	0
Brazos	36	Erath	10	Jefferson	88	Nacogdoches	19	Titus	17
Brewster	1	Falls	16	Jim Hogg	0	Navarro	16	Tom Green	23
Briscoe	0	Fannin	2	Jim Wells	6	Newton	0	Travis	405
Brooks	2	Fayette	5	Johnson	68	Nolan	4	Trinity	3
Brown	18	Fisher	0	Jones	3	Nueces	89	Tyler	4
Burleson	2	Floyd	4	Karnes	5	Ochiltree	1	Upshur	14
Burnet	19	Foard	0	Kaufman	31	Oldham	1	Upton	0
Caldwell	5	Fort Bend	332	Kendall	26	Orange	16	Uvalde	4
Calhoun	5	Franklin	10	Kenedy	0	Palo Pinto	2	Val Verde	7
Callahan	4	Freestone	14	Kent	0	Panola	3	Van Zandt	8
Cameron	62	Frio	2	Kerr	21	Parker	31	Victoria	25
Camp	3	Gaines	0	Kimble	1	Parmer	0	Walker	8
Carson	1	Galveston	108	King	0	Pecos	1	Waller	8
Cass	16	Garza	3	Kinney	1	Polk	5	Ward	1
Castro	1	Gillespie	23	Kleberg	5	Potter	48	Washington	19
Chambers	5	Glasscock	0	Knox	1	Presidio	0	Webb	20
Cherokee	8	Goliad	0	La Salle	19	Rains	1	Wharton	12
Childress	1	Gonzales	8	Lamar	19	Randall	23	Wheeler	0
Clay	2	Gray	2	Lamb	1	Reagan	0	Wichita	22
Cochran	0	Grayson	31	Lampasas	3	Real	0	Wilbarger	5
Coke	0	Gregg	106	Lavaca	5	Red River	1	Willacy	1
Coleman	2	Grimes	6	Lee	2	Reeves	0	Williamson	201
Collin	481	Guadalupe	39	Leon	5	Refugio	0	Wilson	5
Collingsworth	0	Hale	6	Liberty	19	Roberts	0	Winkler	1
Colorado	8	Hall	1	Limestone	17	Robertson	4	Wise	12
Comal	34	Hamilton	4	Lipscomb	0	Rockwall	84	Wood	10
Comanche	5	Hansford	1	Live Oak	1	Runnels	1	Yoakum	1
Concho	3	Hardeman	0	Llano	5	Rusk	8	Young	4
Cooke	13	Hardin	25	Loving	0	Sabine	2	Zapata	1
Coryell	29	Harris	1,599	Lubbock	39	San Augustine	0	Zavala	1
Cottle	0	Harrison	28	Lynn	1	San Jacinto	2	Total	11,349

Source: ICUT.

Enrollment by State
Fall 1999 - Fall 2005

Fall	1999	2000	2001	2002	2003	2004	2005
Alabama	34	32	34	30	34	33	33
Alaska	19	12	13	14	14	18	20
Arizona	61	57	61	57	56	62	81
Arkansas	113	118	132	129	133	122	105
California	268	250	246	227	238	255	252
Colorado	134	134	138	137	129	132	145
Connecticut	6	6	11	7	8	6	7
Delaware	3	2	4	3	1	0	1
District of Columbia	1	1	1	0	2	2	2
Florida	92	77	67	53	60	80	88
Georgia	49	52	52	41	46	58	63
Hawaii	16	14	15	9	8	15	13
Idaho	4	4	7	4	5	5	9
Illinois	73	80	88	87	103	97	105
Indiana	34	37	36	31	28	28	28
Iowa	17	20	23	19	24	21	19
Kansas	109	111	110	96	84	84	91
Kentucky	22	24	21	25	18	18	13
Louisiana	146	144	163	156	145	136	145
Maine	4	0	4	4	4	6	6
Maryland	30	26	28	22	22	18	28
Massachusetts	11	7	10	13	12	18	19
Michigan	18	13	15	14	16	16	22
Minnesota	23	23	29	34	43	35	35
Mississippi	35	41	41	39	34	37	38
Missouri	116	114	111	110	121	101	100
Montana	3	4	4	3	2	6	1
Nebraska	39	44	41	41	41	34	29
Nevada	7	8	8	3	2	1	12
New Hampshire	14	12	10	8	8	8	5
New Jersey	24	25	27	26	22	24	21
New Mexico	76	63	76	69	68	70	66
New York	36	27	22	25	18	27	24
North Carolina	31	37	38	32	43	37	40
North Dakota	3	3	2	3	1	0	1
Ohio	20	21	25	30	28	27	29
Oklahoma	229	218	221	204	186	184	177
Oregon	21	24	17	14	21	21	21
Pennsylvania	16	18	19	22	29	27	26
Rhode Island	3	3	4	3	1	5	2
South Carolina	11	18	19	16	18	20	16
South Dakota	11	11	12	12	9	12	8
Tennessee	82	84	74	72	67	65	66
Texas	10726	11128	11553	11613	11316	11233	11349
Utah	6	9	8	11	8	6	5
Vermont	2	1	1	2	1	0	2
Virginia	68	66	54	51	38	37	44
Washington	36	40	36	37	41	31	36
West Virginia	1	1	2	2	5	2	1
Wisconsin	12	16	19	21	17	23	17
Wyoming	6	6	5	4	6	4	6
Total	12921	13286	13757	13685	13384	13307	13,472

Source: IRT.

Countries Represented by Nonresident Aliens, Fall 1999 to Fall 2005

	Fall	1999	2000	2001	2002	2003	2004	2005		Fall	1999	2000	2001	2002	2003	2004	2005
Albania		0	0	0	0	1	1	0	Malaysia		2	2	2	1	0	1	1
Angola		0	0	0	1	1	2	2	Mali		2	2	2	0	0	0	1
Argentina		1	2	6	6	5	4	2	Mauritius		1	1	0	0	0	0	0
Armenia		0	0	0	0	0	1	1	Mexico		6	9	9	6	6	8	7
Australia		3	5	5	4	3	4	1	Moldova		0	0	0	0	1	1	1
Austria		1	1	0	1	1	0	0	Mongolia		0	0	0	0	1	1	1
Azerbaijan		0	0	0	0	0	0	1	Montserrat		0	0	0	0	0	1	1
Bahamas		2	2	2	2	2	1	3	Nepal		1	1	1	2	2	5	7
Bangladesh		3	2	3	3	2	2	1	Netherlands		1	1	0	1	0	0	0
Belarus		0	0	0	0	1	1	0	New Zealand		1	2	1	0	0	0	3
Belgium		2	1	1	1	0	0	0	Nicaragua		0	1	2	1	1	2	2
Belize		1	1	1	0	1	1	1	Nigeria		8	7	10	15	19	22	30
Bolivia		0	1	1	1	1	3	3	North Mariana Isle		1	1	1	0	0	0	0
Brazil		4	2	5	6	6	3	2	Norway		0	1	2	2	0	1	0
Bulgaria		6	6	6	4	4	6	2	Pakistan		9	8	9	10	3	2	3
Cambodia		0	0	1	1	0	0	0	Panama		1	0	1	2	2	0	1
Cameroon		0	0	1	1	3	1	2	Peru		0	0	1	1	1	2	2
Canada		15	17	16	18	18	15	13	Philippines		0	0	0	0	1	0	1
Cayman Islands		0	0	1	2	2	2	0	Poland		2	2	1	1	2	2	2
Chile		2	1	0	0	0	0	0	Portugal		0	0	0	0	0	0	1
China*		62	64	65	69	72	70	67	Romania		5	3	4	4	6	6	2
Colombia		3	2	0	1	2	2	7	Russia		3	4	3	4	2	6	5
Congo		0	0	0	0	0	1	1	Rwanda		1	1	1	2	1	1	1
Coral Sea Isle Terr.		1	1	0	0	0	0	0	Saudi Arabia		1	2	1	1	0	0	0
Costa Rica		4	4	5	7	8	8	7	Senegal		1	1	0	0	0	0	1
Croatia		1	0	0	2	2	1	0	Serbia & Montenegro		0	0	1	1	0	0	1
Cyprus		0	1	0	0	0	0	0	Sierra Leone		0	0	0	1	1	0	0
Czech Republic		0	1	0	0	1	3	4	Singapore		2	3	4	1	1	1	1
Dominica		0	0	1	1	1	0	0	Slovakia		0	0	1	1	1	2	2
Ecuador		0	0	2	3	4	4	3	Slovenia		2	2	2	2	3	1	1
El Salvador		0	0	0	0	0	1	2	Somalia		1	1	1	0	0	0	0
Ethiopia		1	1	1	0	0	0	1	South Africa		2	1	2	5	5	1	1
Finland		1	0	0	0	1	0	1	Soviet Union		2	2	1	0	0	0	0
France		3	6	3	4	6	8	4	Spain		2	1	1	2	3	2	1
Georgia		0	0	0	3	2	0	0	Sri Lanka		5	5	6	4	4	7	7
Germany		3	6	10	7	7	8	7	St Vincent & Grenadines		0	0	0	1	1	1	1
Ghana		0	2	3	0	3	3	2	Sweden		7	5	8	4	4	5	4
Greece		0	0	0	0	0	1	1	Switzerland		3	2	1	0	0	0	0
Guatemala		0	1	2	2	3	1	2	Taiwan		39	42	41	36	25	17	12
Honduras		2	2	1	1	1	2	2	Thailand		8	5	6	5	2	2	3
Hungary		3	6	6	6	4	1	1	Togo		1	0	0	0	0	0	0
India		24	29	32	39	40	45	34	Trinidad/Tobago		0	1	3	5	4	3	3
Indonesia		11	9	6	5	3	4	5	Turkey		2	0	0	1	2	1	1
Ireland		1	0	0	0	0	0	0	Uganda		0	0	1	3	2	2	2
Iran		0	0	0	0	0	1	1	Ukraine		1	2	5	4	1	1	3
Italy		1	1	1	2	2	2	1	United Arab Emirates		1	2	2	2	0	0	0
Jamaica		3	3	2	1	0	0	0	United Arab Republic		0	0	1	0	0	0	0
Japan		17	17	16	10	9	10	13	United Kingdom		6	5	4	8	9	8	13
Kazakhstan		0	0	0	0	1	0	0	Uzbekistan		0	0	0	0	1	1	0
Kenya		3	4	6	5	3	6	5	Venezuela		4	7	10	9	11	10	11
Korea, Dem. People's		0	0	0	3	2	0	0	Vietnam		0	0	2	2	4	5	4
Korea, Rep. of		20	23	32	29	28	29	34	Virgin Islands (British)		1	1	0	0	1	1	1
Kosovo		0	0	0	0	0	1	0	Yemen (Sanaa)		0	0	0	0	1	1	0
Kuwait		0	0	1	1	1	0	0	Yugoslavia		0	0	0	0	1	0	0
Latvia		0	0	1	1	2	2	1	Zimbabwe		0	1	2	2	1	2	2
Lebanon		0	1	2	1	2	1	1	Unknown		0	0	0	0	1	0	0
*Hong Kong counted in China.										Total	335	358	399	404	395	393	388

Source: International Programs Report, "Annual Census of Foreign Students in the United States"

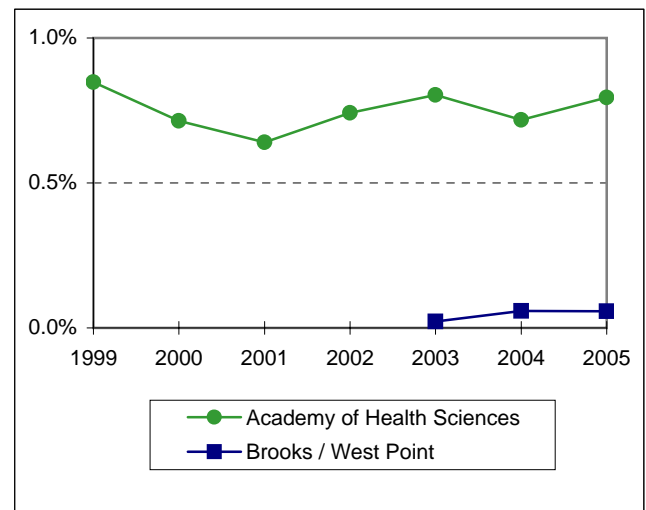
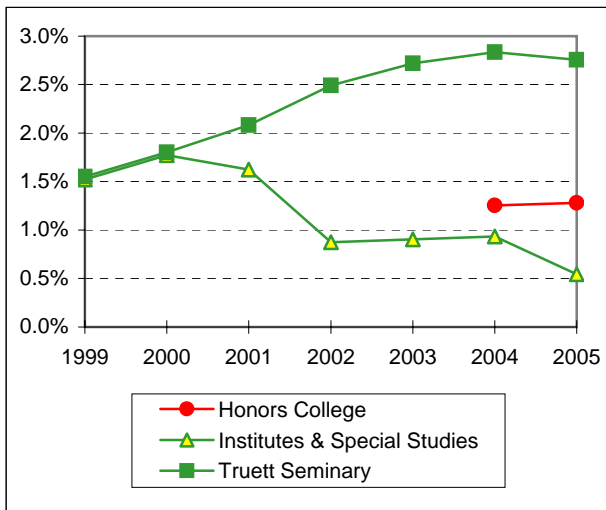
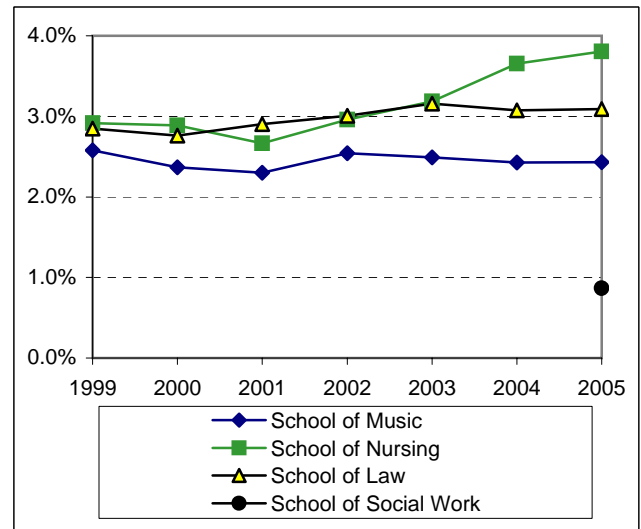
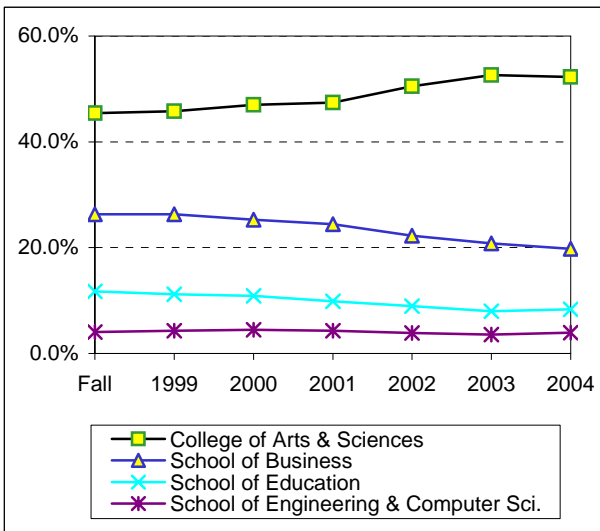
**Enrollment by Unit
Fall 1999 - Fall 2005**

	Fall	1999	2000	2001	2002	2003	2004	2005
College of Arts & Sciences		6,056	6,281	6,684	6,713	7,035	7,257	7,301
School of Business		3,508	3,609	3,598	3,463	3,105	2,872	2,760
School of Education		1,568	1,534	1,546	1,397	1,246	1,105	1,169
School of Engineering & Computer Sci.		542	593	633	605	536	495	551
School of Music		344	325	327	360	347	335	340
School of Nursing		389	396	379	419	444	504	532
School of Social Work								121
Honors College					177	154	173	179
Institutes & Special Studies		203	243	231	124	126	129	76
Graduate School		24	14	11	10	10	7	10
School of Law		380	379	413	426	440	424	432
Truett Seminary		207	247	296	353	379	391	385
Academy of Health Sciences		113	98	91	105	112	99	111
Brooks / West Point				12	7	3	8	8
TOTAL		13,334	13,719	14,221	14,159	13,937	13,799	13,975

Notes:

1. The enrollment for the Graduate School reflects students classified as "No Major."
2. A new doctoral program in Physical Therapy was added in 2001. This program is administered through the Brooks and West Point academies.
3. The Honors College was established in 2002.
4. The School of Social Work was established in 2005.

**Enrollment Percentage by Unit
Fall 1999 - Fall 2005**

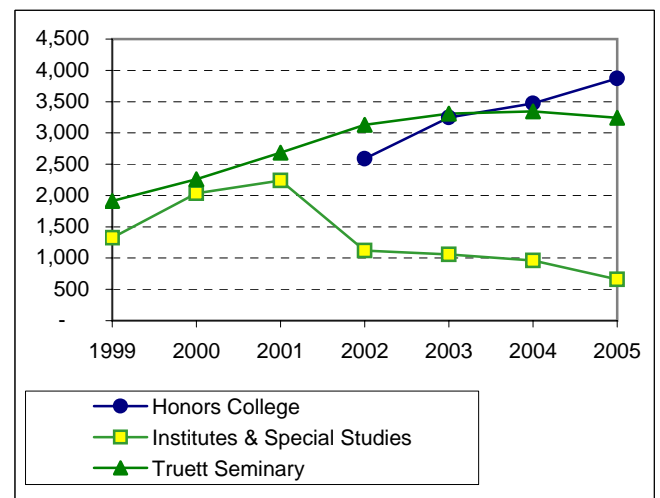
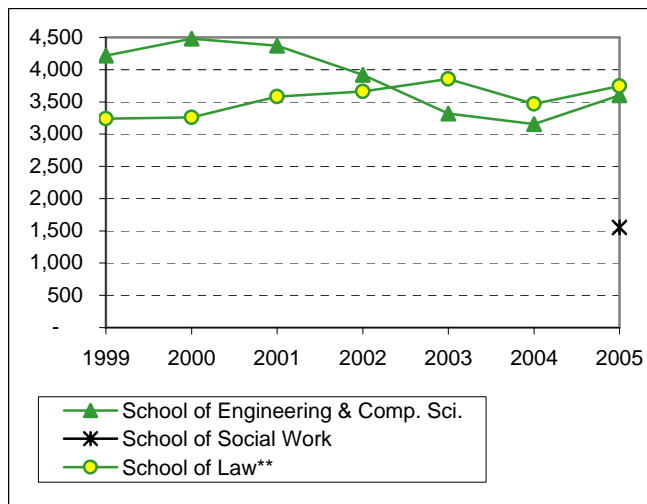
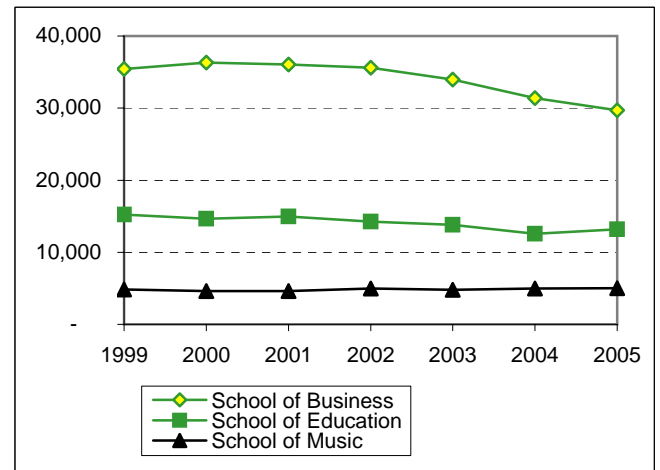
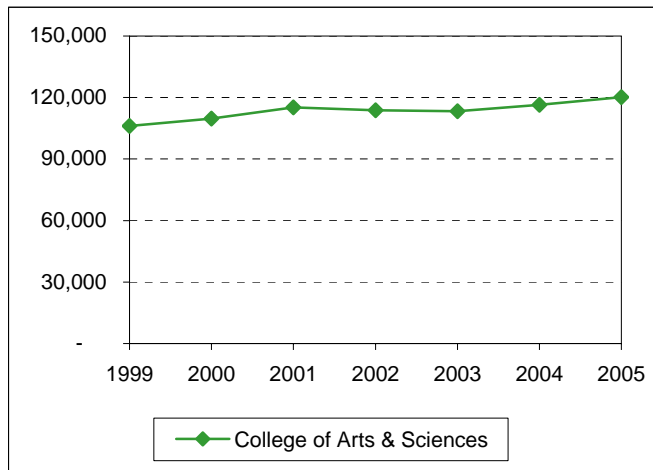


	Fall	1999	2000	2001	2002	2003	2004	2005
College of Arts & Sciences		45.4%	45.8%	47.0%	47.4%	50.5%	52.6%	52.2%
School of Business		26.3%	26.3%	25.3%	24.5%	22.3%	20.8%	19.7%
School of Education		11.8%	11.2%	10.9%	9.9%	8.9%	8.0%	8.4%
School of Engineering & Computer Sci.		4.1%	4.3%	4.5%	4.3%	3.8%	3.6%	3.9%
School of Music		2.6%	2.4%	2.3%	2.5%	2.5%	2.4%	2.4%
School of Nursing		2.9%	2.9%	2.7%	3.0%	3.2%	3.7%	3.8%
School of Social Work								0.9%
Honors College							1.3%	1.3%
Institutes & Special Studies		1.5%	1.8%	1.6%	0.9%	0.9%	0.9%	0.5%
Graduate School					0.1%	0.1%	0.1%	0.1%
School of Law		2.8%	2.8%	2.9%	3.0%	3.2%	3.1%	3.1%
Truett Seminary		1.6%	1.8%	2.1%	2.5%	2.7%	2.8%	2.8%
Academy of Health Sciences		0.8%	0.7%	0.6%	0.7%	0.8%	0.7%	0.8%
Brooks / West Point						0.0%	0.1%	0.1%

See Notes, page 14.

**Student Credit Hours by Unit*
(Excluding Health Sciences)
Fall 1999 - Fall 2005**

	Fall	1999	2000	2001	2002	2003	2004	2005
College of Arts & Sciences		106,150	109,742	115,178	113,781	113,299	116,430	120,123
School of Business		35,429	36,307	36,057	35,600	33,980	31,387	29,696
School of Education		15,225	14,640	14,963	14,272	13,790	12,551	13,175
School of Engineering & Comp. Sci.		4,219	4,480	4,372	3,919	3,321	3,153	3,601
School of Music		4,856	4,617	4,605	4,994	4,797	4,961	5,021
School of Nursing		3,114	3,245	3,180	3,399	3,479	4,107	4,235
School of Social Work								1,551
Honors College					2,588	3,249	3,474	3,872
Institutes & Special Studies		1,324	2,033	2,240	1,122	1,056	963	660
School of Law**		3,238	3,260	3,580	3,660	3,857	3,470	3,745
Truett Seminary		1,912	2,260	2,683	3,130	3,311	3,343	3,242
TOTAL		175,467	180,583	186,858	186,465	184,139	183,839	188,921

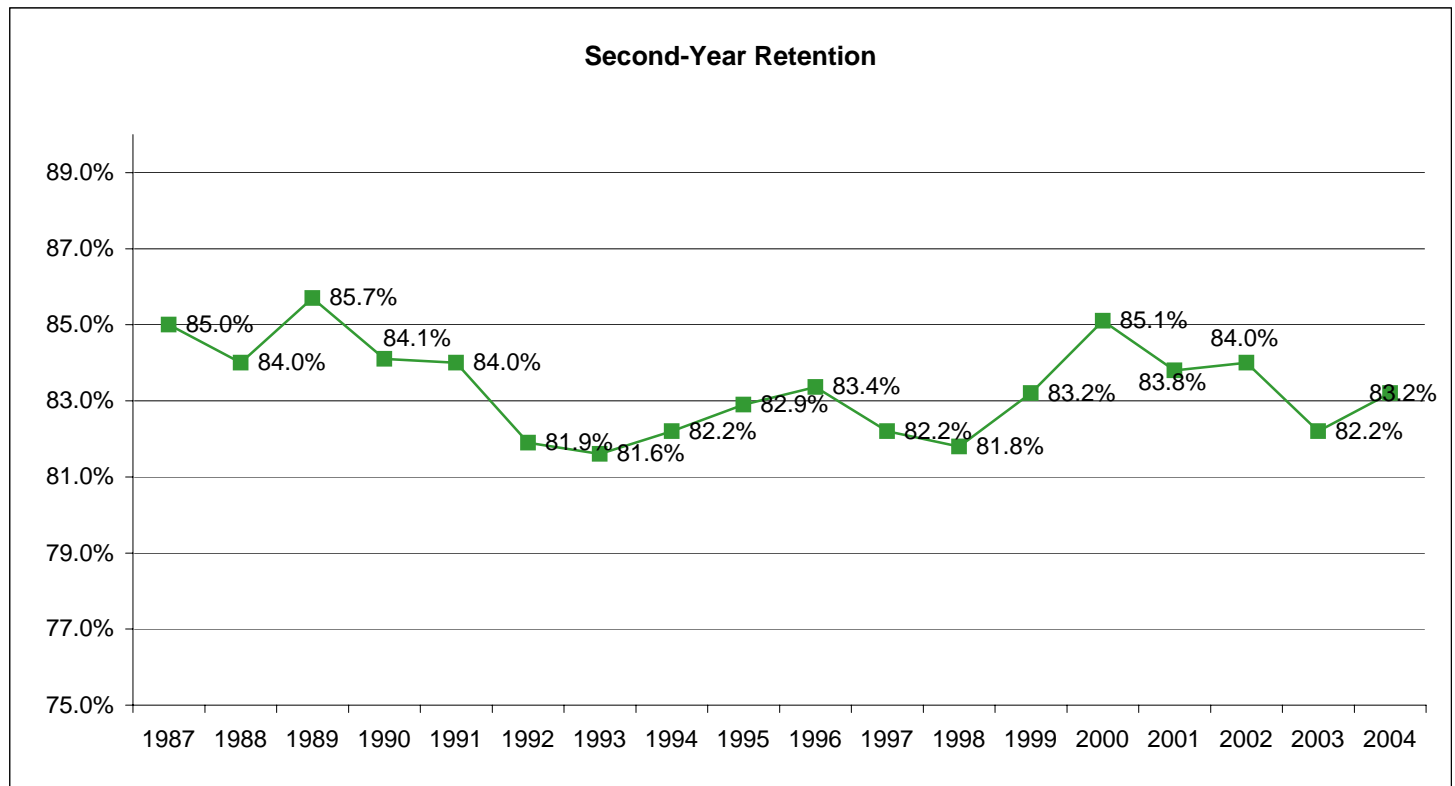


*BIC courses have been credited to the department of the instructor. See additional notes on page 14.

**Quarter hours converted to semester hours.

Retention of First-Time Freshman Classes Entering Fall 1987 - Fall 2004

First-Time Freshman Class of:	N	After 1 year		After 2 years		After 3 years			After 4 years			After 5 years			After 6 years		
		Cont.	Drop.	Cont.	Drop.	Cont.	Drop.	Grad.	Cont.	Drop.	Grad.	Cont.	Drop.	Grad.	Cont.	Drop.	Grad.
1987	2,313	85.0%	15.0%	75.6%	24.4%	71.7%	27.1%	1.2%	24.2%	28.2%	47.6%	3.4%	28.3%	68.3%	1.1%	28.2%	70.7%
1988	2,302	84.0%	16.0%	75.5%	24.5%	72.5%	26.5%	1.0%	29.8%	28.3%	41.9%	3.3%	28.5%	68.2%	0.8%	27.9%	71.3%
1989	2,357	85.7%	14.3%	74.8%	25.2%	71.2%	27.7%	1.1%	28.3%	28.9%	42.8%	3.9%	28.9%	67.2%	1.2%	28.8%	70.0%
1990	2,435	84.1%	15.9%	73.0%	27.0%	69.8%	29.0%	1.2%	28.1%	29.6%	42.3%	4.2%	30.0%	65.8%	1.6%	29.4%	69.0%
1991	2,156	84.0%	16.0%	74.5%	25.5%	70.7%	28.2%	1.1%	26.5%	29.6%	43.9%	3.8%	29.7%	66.5%	1.3%	29.0%	69.7%
1992	2,367	81.9%	18.1%	71.5%	28.5%	67.2%	31.5%	1.4%	28.4%	32.3%	39.3%	4.8%	32.0%	63.2%	0.9%	32.2%	66.9%
1993	2,433	81.6%	18.4%	72.0%	28.0%	68.4%	30.4%	1.2%	27.5%	32.3%	40.2%	4.5%	32.3%	63.2%	1.3%	31.8%	66.9%
1994	2,351	82.2%	17.8%	72.3%	27.7%	68.5%	30.1%	1.4%	27.0%	31.1%	41.9%	4.9%	31.9%	63.2%	1.5%	31.8%	66.7%
1995	2,339	82.9%	17.1%	76.0%	24.0%	71.4%	27.2%	1.4%	28.8%	28.3%	42.9%	4.4%	28.5%	67.1%	1.2%	28.0%	70.8%
1996	2,476	83.4%	16.6%	74.8%	25.2%	72.2%	26.9%	0.9%	29.4%	27.7%	42.9%	4.0%	27.6%	68.4%	1.3%	27.0%	71.7%
1997	2,410	82.2%	17.8%	73.7%	26.3%	70.3%	28.4%	1.2%	30.0%	29.9%	40.1%	4.9%	29.0%	66.1%	1.4%	28.5%	70.2%
1998	2,938	81.8%	18.2%	75.0%	25.0%	71.1%	27.1%	1.7%	28.9%	28.1%	43.0%	4.6%	29.4%	66.0%	1.4%	26.8%	71.9%
1999	2,772	83.2%	16.8%	75.5%	24.5%	70.7%	27.5%	1.8%	27.7%	27.0%	45.3%	3.9%	27.0%	69.1%	1.2%	26.8%	72.0%
2000	2,832	85.1%	14.9%	77.9%	22.1%	74.3%	25.0%	0.8%	26.4%	24.6%	49.0%	3.6%	24.9%	71.5%			
2001	2,801	83.8%	16.2%	75.7%	24.3%	73.3%	25.3%	1.4%	25.2%	26.8%	47.9%						
2002	2,620	84.0%	16.0%	76.3%	23.7%	72.6%	25.5%	1.9%									
2003	2,678	82.2%	17.8%	74.5%	25.5%												
2004	2,785	83.2%	16.8%														
Average		83.3%	16.7%	74.6%	25.4%	71.0%	27.7%	1.3%	27.7%	28.8%	43.4%	4.2%	29.1%	66.7%	1.2%	28.9%	69.8%
5-year Avg		83.7%	16.3%	76.0%	24.0%	72.4%	26.1%	1.5%	27.6%	27.3%	45.1%	4.2%	27.6%	68.2%	1.3%	27.4%	71.3%

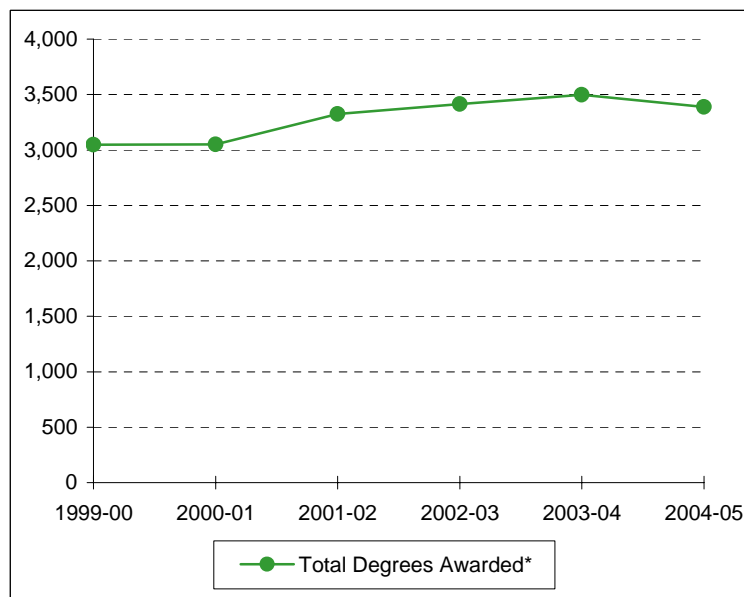
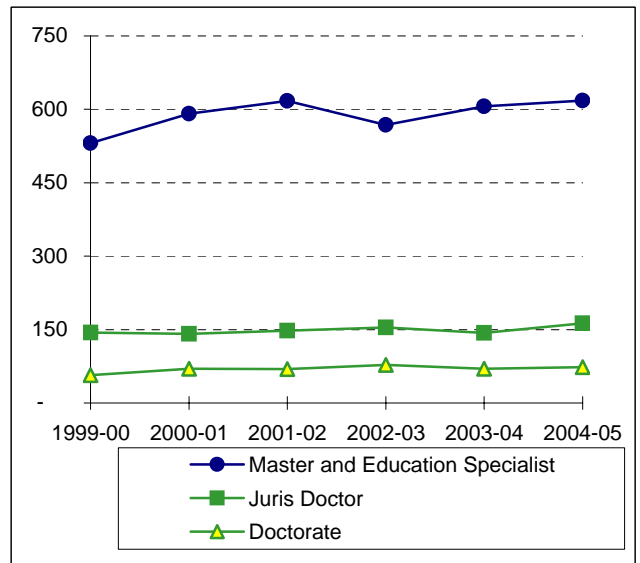


Distribution of Degrees (Duplicated Count*)
1999-00 through 2004-05

	1999-00	2000-01	2001-02	2002-03	2003-04	2004-05
Bachelor of Arts	910	811	997	1036	1090	1084
Bachelor of Business Administration	951	1002	1009	1028	1019	909
Bachelor of Fine Arts	26	31	37	40	40	54
Bachelor of Music	24	22	30	29	27	39
Bachelor of Music Education	30	24	18	28	15	19
Bachelor of Science	135	142	165	200	229	261
Bachelor of Science in Aviation Sciences	5	8	13	8	10	6
Bachelor of Science in Computer Science	38	24	24	35	20	17
Bachelor of Science in Education	415	350	350	345	363	213
Bachelor of Science in Electrical & Computer Engineering				23	25	16
Bachelor of Science in Engineering	24	28	41	7	2	1
Bachelor of Science in Family & Consumer Sciences	38	42	59	73	102	87
Bachelor of Science in Informatics		1	8	17	16	12
Bachelor of Science in Mechanical Engineering				12	15	20
Bachelor of Science in Nursing	85	97	86	90	85	108
Bachelor of Social Work						2
TOTAL BACHELOR DEGREES	2681	2582	2837	2971	3058	2848
Master of Accountancy	18	35	39	35	47	40
Master of Arts	61	58	66	56	77	74
Master of Business Administration	103	158	149	105	95	104
Master of Business Admin. in International Management	0	3	1	0		
Master of Clinical Gerontology	2	4	4	7		
Master of Divinity	48	36	33	51	71	70
Master of Environmental Studies	2	1	0	1	2	2
Master of Fine Arts	3	2	2	0	1	2
Master of Health Administration	48	47	39	38	37	43
Master of International Journalism	0	0	1	1	2	2
Master of International Management	0	1	0	0	1	0
Master of Music	24	22	22	31	23	25
Master of Physical Therapy	22	19	21	18	17	16
Master of Public Policy and Administration	7	4	4	2	6	3
Master of Science	25	25	21	34	22	44
Master of Science in Clinical Psychology	12	11	8	11	11	11
Master of Science in Communication Sciences & Disorders	42	37	28	26	33	22
Master of Science in Economics	5	5	6	4	10	4
Master of Science in Education	59	43	83	64	77	80
Master of Science in Electrical/Computer Engineering						1
Master of Science in Gerontology	7	9	7	12		
Master of Science in Information Systems	19	27	31	18	14	15
Master of Science in Limnology	0	1	0	0	0	0
Master of Science in Nursing	7	10	14	13	21	15
Master of Social Work		17	27	29	25	32
Master of Taxation	18	9	6	10	10	11
TOTAL MASTER'S DEGREES	532	584	612	566	602	616
TOTAL EDUCATION SPECIALIST DEGREES	0	7	6	4	4	2
TOTAL JURIS DOCTOR DEGREES	144	141	148	154	143	163
Doctor of Education	21	31	18	25	23	22
Doctor of Ministry			2	7	3	5
Doctor of Philosophy	25	31	26	31	34	29
Doctor of Psychology	11	8	11	11	7	12
Doctor of Science in Physical Therapy			12	4	3	5
TOTAL DOCTORAL DEGREES	57	70	69	78	70	73
TOTAL DEGREES AWARDED	3414	3384	3672	3773	3877	3702

*Degree information on this page is reported beginning with the Summer semester and including the following Fall and Spring terms. An individual graduate with multiple majors is counted as a whole graduate in each major area of study (i.e., duplicated count).

**Summary of Degrees Awarded (Unduplicated Count*)
1999-00 through 2004-05**



Degree Level:	1999-00	2000-01	2001-02	2002-03	2003-04	2004-05
Bachelor	2,315	2,249	2,491	2,615	2,679	2,533
Master and Education Specialist	531	591	617	568	606	618
Juris Doctor	144	141	148	154	143	163
Doctorate	57	70	69	78	70	73
Total Degrees Awarded*	3,047	3,051	3,325	3,415	3,498	3,387

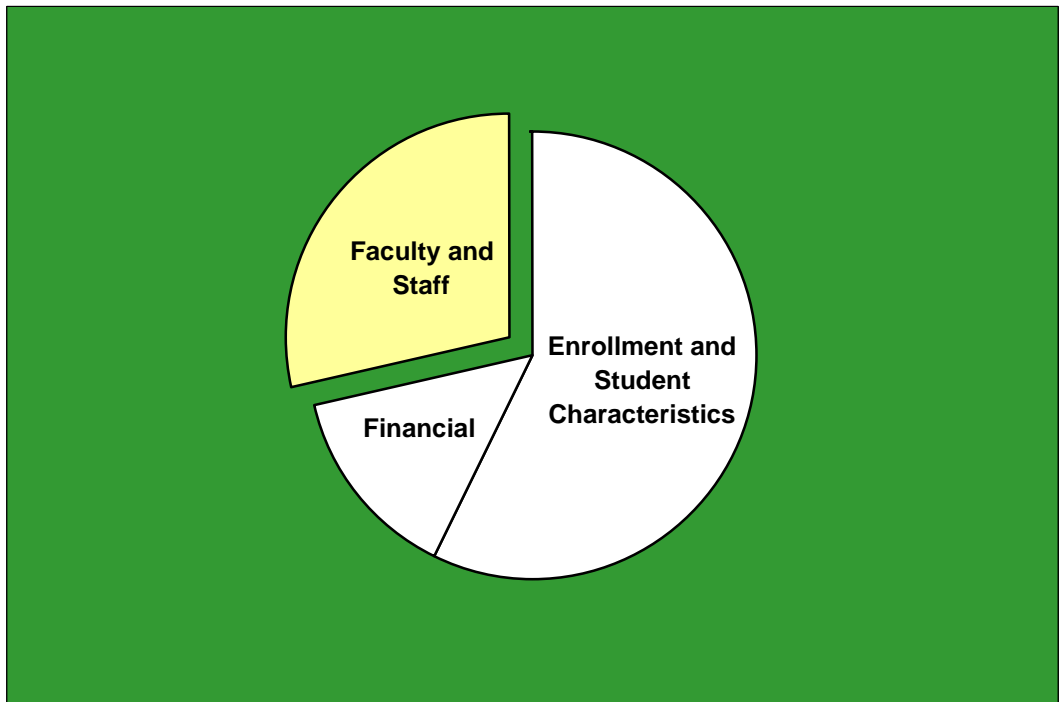
*The information on this page indicates the number of degree recipients (i.e., unduplicated count). Degree information is reported beginning with the Summer semester and including the following Fall and Spring terms.

Degree Programs (as of May 2006)

Accounting (BBA)	Communication Studies (MA)	Fashion Merchandising (BA)
Accounting (MAcc)	Community Health (BSEd)	Fashion Merchandising (BSFCS)
Advanced Neonatal Nursing (MSN)	Composition (BM)	Finance (BBA)
Advanced Nursing Leadership (MSN)	Composition (MM)	Financial Services / Planning (BBA)
Air Science and Environmnet (IMES)	Computer Information Systems (BBA)	Forensic Science (BS)
American Studies (BA)	Computer Science Grade 8-12 (BSEd)	Forestry (BA)
American Studies (MA)	Computer Science (BA)	Forestry (BS)
Anthropology (BA)	Computer Science (BSCS)	French (BA)
Applied Mathematics (BS)	Computer Science (MS)	General Family & Consumer Sci. (BA)
Applied Music (BM)	Conducting (MM)	General Family & Consumer Sci. (BSFCS)
Archaeology (BA)	Curriculum & Instruction (EdD)	General Studies in HHPR (BSEd)
Architecture (BA)	Curriculum & Instruction (MA)	Geography (BA)
Art All-Level (BSEd)	Curriculum & Instruction (MSEd)	Geology (BS)
Art History (BA)	Dentistry (BA)	Geology (MS)
Asian Studies (BA)	Dentistry (BS)	Geology (PhD)
Athletic Training (BSEd)	Design (BFA)	Geophysics (BS)
Aviation Sciences (BSAvSc)	Directing (MFA)	German (BA)
Basic Business (BBA)	Early Childhood - Grade 4 (BSEd)	Great Texts of the Western Tradition (BA)
Biblical & Related Languages (BA)	Earth Science (BA)	Greek (BA)
Biochemistry (BA)	Earth Science (MA)	Health Care Administration (MHA)
Biochemistry (BS)	Economics (BA)	Health, Human Performance, & Recreation (MSEd)
Bioinformatics (BSI)	Economics (BBA)	Health Science Studies (BSEd)
Biology (BA)	Economics (BS)	History (BA)
Biology (BS)	Economics (MSEco)	History (MA)
Biology (MA)	Education (MA)	Human Resources Management (BBA)
Biology (MS)	Educational Administration (EdS)	Information Systems Management (MBA)
Biology (PhD)	Educational Administration (MSEd)	Information Systems (MSIS)
Biomedical Engineering (MSBME)	Educational Psychology (EdS)	Instrumental Music (BME)
Biomedical Studies (MS)	Educational Psychology (MA)	Interior Design (BA)
Biomedical Studies (PhD)	Educational Psychology (MSEd)	Interior Design (BSFCS)
Business Administration (MBA)	Educational Psychology (PhD)	International Business (BBA)
Business - Broadcasting (BBA)	Electrical & Computer Engineering (BSECE)	International Economics (MA)
Business - Journalism (BBA)	Electrical & Computer Engineering (MSECE)	International Economics (MS)
Chemistry (BA)	Engineering (BSE)	International Journalism (MIJ)
Chemistry (BS)	Engineering (ME)	International Management (MBA)
Chemistry (MS)	English (BA)	International Management (MBAIM)
Chemistry (PhD)	English (MA)	International Relations (MA)
Child & Family Studies (BA)	English (PhD)	International Studies (BA)
Child & Family Studies (BSFCS)	English Grade 4-8 (BSEd)	Journalism (BA)
Choral Music (BME)	English Grade 8-12 (BSEd)	Journalism (MA)
Church Music (BM)	Entrepreneurship (BBA)	Language and Linguistics (BA)
Church Music (MM)	Environmental Biology (MS)	Latin American Studies (BA)
Church-State Studies (MA)	Environmental Science (BS)	Latin (BA)
Church-State Studies (PhD)	Environmental Studies (BA)	Law (JD)
Classics (BA)	Environmental Studies (BS)	Life Science Grade 8-12 (BSEd)
Clinical Laboratory Science (BS)	Environmental Studies (MES)	Limnology (MSL)
Clinical Psychology (MSCP)	Environmental Studies (MS)	Management (BBA)
Clinical Psychology (PsyD)	Exercise, Nutrition & Preventive Health (PhD)	Marketing (BBA)
Communication Sci. & Disorders (BA)	Exercise Physiology (BSEd)	Mathematics (BA)
Communication Sci. & Disorders (MA)	Family Nurse Practitioners (MSN)	Mathematics (BS)
Communication Sci. & Disorders (MSCSD)	Fashion Design (BA)	Mathematics (MS)
Communication Specialist (BA)	Fashion Design (BSFCS)	

Mathematics (PhD)	Professional Writing (BA)
Mathematics Grade 4-8 (BSEd)	Psychology (BA)
Mathematics Grade 8-12 (BSEd)	Psychology (BS)
Mechanical Engineering (BSME)	Public Administration (BBA)
Mechanical Engineering (MSME)	Public Policy & Administration (MPPA)
Medicine (BA)	Real Estate (BBA)
Medicine (BS)	Recreation (BSEd)
Ministry (DMin)	Religion (BA)
Museum Studies (BA)	Religion (MA)
Museum Studies (BS)	Religion (PhD)
Museum Studies (MA)	Religion, Politics and Society (PhD)
Music (BA)	Risk Management and Insurance (BBA)
Music Education (MM)	Russian (BA)
Music History & Literature (BM)	Science Grade 4-8 (BSEd)
Music History & Literature (MM)	Slavic and East European Studies (BA)
Music Theory (MM)	Social Studies Grade 4-8 (BSEd)
Neuroscience (BS)	Social Studies Grade 8-12 (BSEd)
Neuroscience (MA)	Social Work (BSW)
Neuroscience (PhD)	Social Work (MSW)
Nursing (BSN)	Sociology (BA)
Nutrition Sciences (BA)	Sociology (MA)
Nutrition Sciences (BS)	Sociology (PhD)
Nutrition Sciences (BSFCS)	Spanish (BA)
Operations Management (BBA)	Spanish (MA)
Optometry (BA)	Spanish All-Level (BSEd)
Optometry (BS)	Special Education All-Level (BSEd)
Pedagogy (BM)	Speech Communication (BA)
Performance (BFA)	Sports, Sponsorship & Sales (BBA)
Performance (MM)	Statistics (BS)
Philosophy (BA)	Statistics (MS)
Philosophy (MA)	Statistics (PhD)
Philosophy (PhD)	Studio Art (BA)
Physical Education All-Level (BSEd)	Studio Art (BFA)
Physical Science Grade 8-12 (BSEd)	Taxation (MT)
Physical Therapy (DPT)	Telecommunication (BA)
Physical Therapy (DScPT)	Theater Arts (BA)
Physics (BA)	Theater Arts (MA)
Physics (BS)	Theological Studies (MTS)
Physics (MA)	Theology (MDiv)
Physics (MS)	Theory (BM)
Physics (PhD)	University Scholars (BA)
Piano Accompanying (MM)	
Piano Pedagogy & Performance (MM)	
Political Science (BA)	
Political Science (MA)	
Political Science (PhD)	
Pre-Business	
Pre-Education	
Pre-Forensic Science	
Pre-Nursing	
Pre-Social Work	
Professional Selling (BBA)	

Faculty and Staff



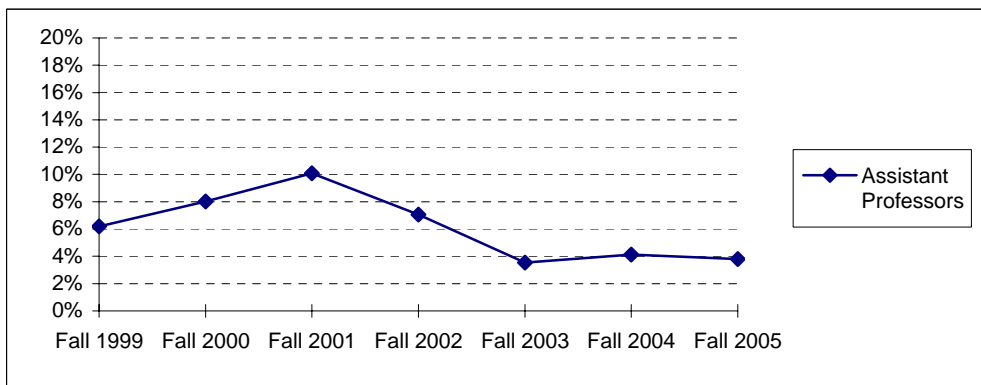
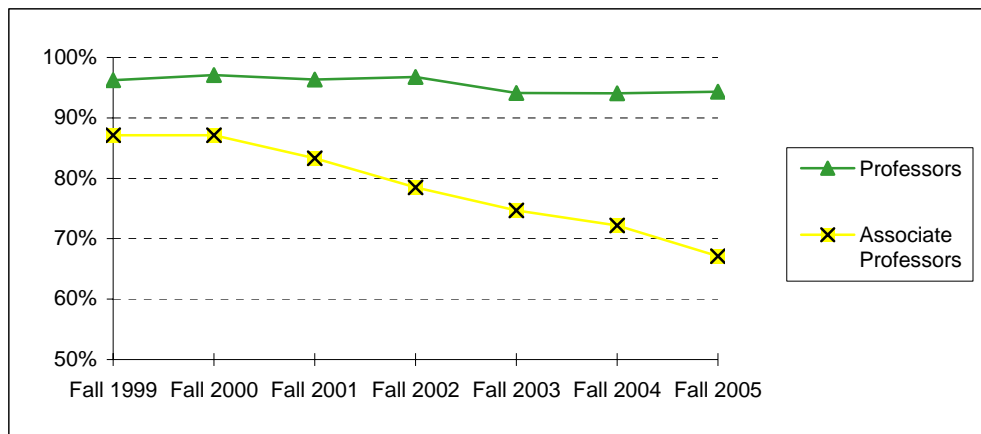
**Full-Time Faculty Positions (AAUP Definition)
Fall 1999 - Fall 2005**

Rank	Fall 1999		Fall 2000		Fall 2001		Fall 2002		Fall 2003		Fall 2004		Fall 2005	
	Male	Female	Male	Female	Male	Female	Male	Female	Male	Female	Male	Female	Male	Female
Professors:														
Number	203	35	203	39	211	34	213	33	210	29	205	32	197	32
Tenured	195	34	197	38	202	34	205	33	196	29	191	32	186	30
Associate Prof.:														
Number	91	49	86	46	89	49	96	48	105	49	108	43	108	44
Tenured	79	43	74	41	71	44	71	42	75	40	74	35	68	34
Assistant Prof:														
Number	77	52	84	53	85	54	93	63	99	70	102	68	98	60
Tenured	2	6	5	6	6	8	3	8	2	4	3	4	2	4
Instructors:														
Number	0	1	0	3	0	3	0	1	0	0	0	1	0	1
Tenured	0	1	0	1	0	1	0	0	0	0	0	1	0	1
Senior Lecturers:														
Number					26	38	22	39	22	38	21	37	21	33
Lecturers:														
Number	51	91	53	95	37	71	58	90	62	93	64	89	70	91
Total Number	422	228	426	236	448	249	482	274	498	279	500	270	494	261
Total Tenured	276	84	276	86	279	87	279	83	273	73	268	72	256	69

**Highest Degree Earned by Full-Time Faculty
Fall 1999 - Fall 2005**

	Fall 1999	Fall 2000	Fall 2001	Fall 2002	Fall 2003	Fall 2004	Fall 2005
Associate's	0	0	0	1	1	1	0
Bachelor's	0	0	1	1	2	2	6
Master's	150	159	165	199	222	213	200
Doctoral	478	480	507	550	569	572	566
Professional	22	23	24	26	26	26	24
Total	650	662	697	777	820	814	796

**Percentage of Full-Time Faculty with Tenure (AAUP Definition)
Fall 1999 - Fall 2005**



	Fall 1999	Fall 2000	Fall 2001	Fall 2002	Fall 2003	Fall 2004	Fall 2005
Professors	96.2%	97.1%	96.3%	96.7%	94.1%	94.1%	94.3%
Associate Professors	87.1%	87.1%	83.3%	78.5%	74.7%	72.2%	67.1%
Assistant Professors	6.2%	8.0%	10.1%	7.1%	3.6%	4.1%	3.8%
Instructors	100.0%	33.3%	33.3%	0.0%	-	100.0%	100.0%
All Faculty	55.4%	54.7%	52.5%	47.9%	44.5%	44.2%	43.0%

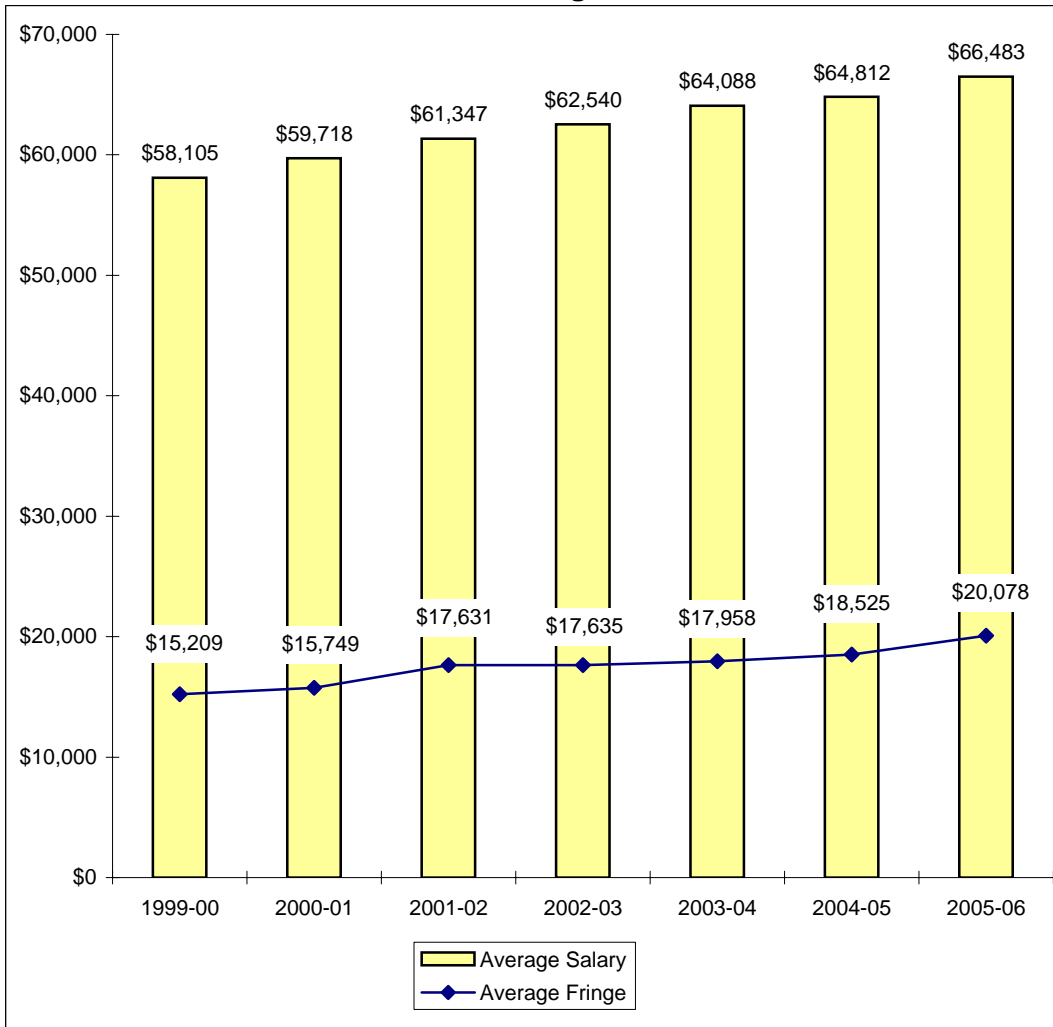
**Average Salaries of Full-Time Instructional Faculty
on Academic Year Contracts (AAUP Definition)
Fall 1999 - Fall 2005**

Rank	Fall 1999		Fall 2000		Fall 2001		Fall 2002	
	Number in Rank	Average Salary	Number in Rank	Average Salary	Number in Rank	Average Salary	Number in Rank	Average Salary
Professor	238	\$77,289	242	\$79,299	245	\$81,747	246	\$83,562
Associate Professor	140	\$58,365	132	\$60,511	138	\$62,697	144	\$65,136
Assistant Professor	129	\$45,423	137	\$47,530	139	\$50,046	156	\$55,208
Instructor	1	*	3	*	3	*	1	*
Senior Lecturer					64	\$45,227	61	\$46,482
Lecturer	142	\$37,309	148	\$38,525	108	\$37,884	148	\$39,478
All Ranks	650	\$58,105	662	\$59,718	697	\$61,347	756	\$62,540
Average Fringe		\$15,209		\$15,749		\$17,631		\$17,635
Fringe as a Percentage of Average Salary		26.2%		26.4%		28.7%		28.2%
Percentage Increase in Average Salary for Continuing Faculty		4.3%		4.1%		5.0%		4.9%

Rank	Fall 2003		Fall 2004		Fall 2005	
	Number in Rank	Average Salary	Number in Rank	Average Salary	Number in Rank	Average Salary
Professor	239	\$86,590	237	\$87,091	229	\$89,219
Associate Professor	154	\$67,706	151	\$67,501	152	\$68,432
Assistant Professor	169	\$57,177	170	\$58,675	158	\$52,385
Instructor	0		1	*	1	*
Senior Lecturer	60	\$47,826	58	\$47,719	54	\$48,728
Lecturer	155	\$39,627	153	\$41,055	161	\$42,388
All Ranks	777	\$64,088	770	\$64,812	755	\$66,483
Average Fringe		\$17,958		\$18,525		\$20,078
Fringe as a Percentage of Average Salary		28.0%		28.6%		30.2%
Percentage Increase in Average Salary for Continuing Faculty		3.4%		0.2%		3.4%

*Data not displayed for five or fewer faculty.

**Average Compensation of Full-Time Instructional Faculty
on Academic Year Contracts
1999-00 through 2005-06**

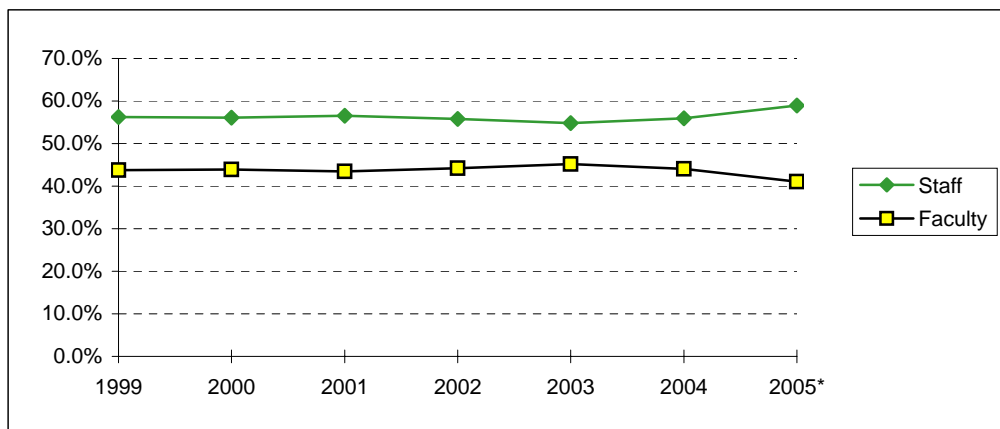


**Institutional Staff
Fall 1999 - Fall 2005**

Fall	1999	2000	2001	2002	2003	2004	2005*
Faculty:							
Full-Time	676	689	725	806	851	834	755
Part-Time	114	133	116	110	144	113	155
Executive/Administrative:							
Full-Time	150	155	172	173	181	188	221
Part-Time	1	0	0	1	1	2	1
Other Professional:							
Full-Time	299	325	352	421	453	456	500
Part-Time	17	13	14	14	11	18	18
Technical/Paraprofessional:							
Full-Time	44	46	44	33	40	40	105
Part-Time	2	4	3	4	2	3	17
Clerical/Secretarial:							
Full-Time	361	372	392	399	408	396	335
Part-Time	64	58	44	39	42	39	33
Skilled Crafts:							
Full-Time	6	6	4	7	6	6	7
Part-Time	2	2	1	0	0	0	1
Service/Maintenance:							
Full-Time	60	63	61	57	58	49	58
Part-Time	9	7	6	7	5	7	10
Total:							
Full-Time	1596	1656	1750	1896	1997	1969	1981
Part-Time	209	217	184	175	205	182	235
Grand Total	1805	1873	1934	2071	2202	2151	2216

*2005 shifts in categorization of employees due to internal reclassification and IPEDS reporting changes.

**Percentage of Institutional Staff
Fall 1999 - Fall 2005**



Fall	1999	2000	2001	2002	2003	2004	2005*
Staff	56.2%	56.1%	56.5%	55.8%	54.8%	56.0%	58.9%
Faculty	43.8%	43.9%	43.5%	44.2%	45.2%	44.0%	41.1%

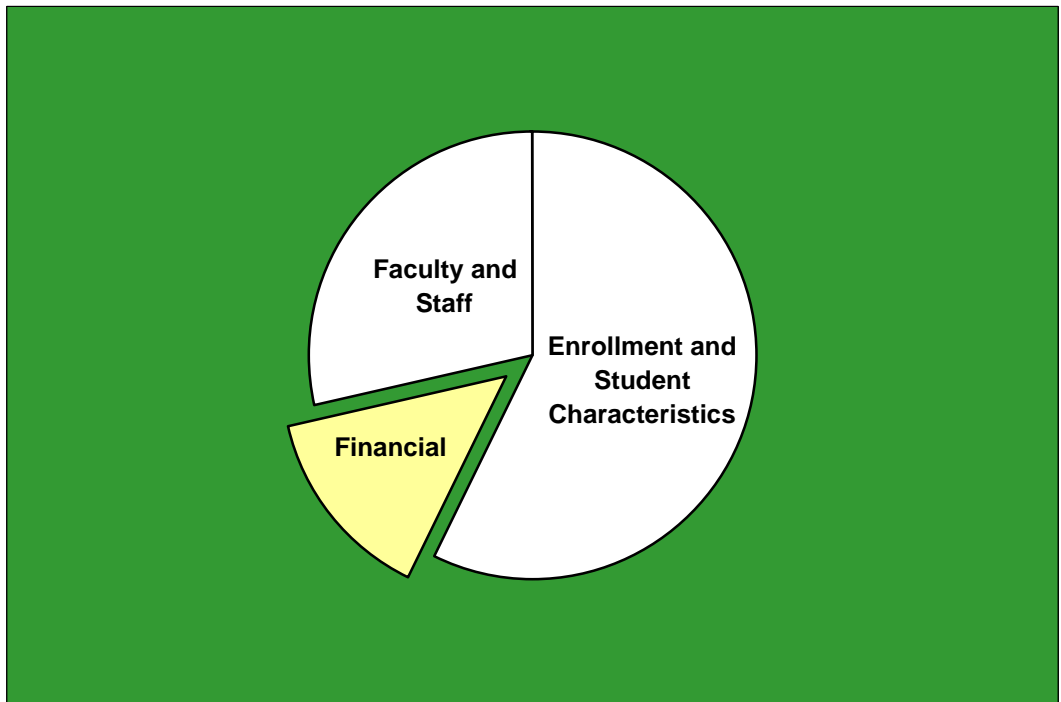
**Full-Time Faculty by Religious Affiliation
Fall 1999 - Fall 2005**

Fall	1999	2000	2001	2002	2003	2004	2005
Assembly of God	1	1	1	1	1	1	1
Baptist	315	315	331	381	401	390	375
Catholic	45	51	48	61	73	78	79
Church of Christ	15	16	16	21	20	20	18
Disciples of Christ	13	11	13	14	15	14	11
Episcopalian	49	45	47	51	53	52	54
Lutheran	38	38	40	41	46	46	47
Methodist	70	71	78	81	80	79	78
Non-/Inter-Denominational	11	16	16	17	17	21	24
Presbyterian	36	41	46	49	50	51	49
Other / Unspecified	57	57	61	60	64	62	60
Total	650	662	697	777	820	814	796

**Full-Time Staff by Religious Affiliation
Fall 1999 - Fall 2005**

Fall	1999	2000	2001	2002	2003	2004	2005
Assembly of God	4	6	7	7	11	10	9
Baptist	484	507	569	594	614	592	618
Catholic	84	86	100	110	112	117	108
Church of Christ	30	32	35	37	34	33	35
Disciples of Christ	20	17	18	20	21	19	18
Episcopalian	17	15	17	26	26	30	26
Lutheran	33	37	40	36	35	35	35
Methodist	96	99	109	110	115	109	110
Non/Inter-Denominational	20	24	20	42	58	64	63
Presbyterian	17	21	25	28	25	22	27
Other / Unspecified	115	123	85	80	100	95	96
Total	920	967	1025	1090	1151	1126	1145

Financial



**Undergraduate Tuition and Other Semester Charges
1999-00 through 2005-06**

	1999-00	2000-01	2001-02	2002-03	2003-04	2004-05	2005-06
UG Grandfathered Tuition per Hour (8)	\$329.00	\$355.00	\$379.00	\$405.00	\$432.00	\$461.00	\$490.00
Increase from Prior Year	6.8%	7.9%	6.8%	6.9%	6.7%	6.7%	6.3%
UG Tuition per Semester Hour (9)				\$654.00	\$698.00	\$746.00	\$794.00
Increase from Prior Year					6.7%	6.9%	6.4%
UG Flat Tuition Rate (7)				\$15,700	\$16,750	\$17,900	\$19,050
Increase from Prior Year					6.7%	6.9%	6.4%
Application Fee (UG)	35.00	35.00	35.00	35.00	35.00	35.00	50.00
Applied Music Fee(1)	105.00	110.00	117.00	125.00	133.00	142.00	151.00
Change-of-Course Fee	20.00	20.00	20.00	20.00	20.00	20.00	20.00
Chapel-Forum Fee	15.00	25.00	25.00	25.00	30.00	50.00	55.00
Credit by Baylor Exam Fee	164.50	177.50	189.50	203.00	216.00	230.00	245.00
General Student Fee	490.00	524.00	590.00	625.00	690.00	745.00	800.00
Enrollment Deposit (2)	100.00	100.00	100.00	100.00	100.00	100.00	100.00
Lab/Course Fees (3)	25.00	25.00	25.00	25.00	35.00	50.00	50.00
Late Registration Fee (4)	20.00	20.00	20.00	20.00	20.00	30.00	50.00
Student Life Fee	1.00	1.00	1.00	0.00	0.00	0.00	0.00
Technology Fee	90.00	95.00	101.00	107.00	150.00	195.00	210.00
Vehicle Registration Fee (5)	145.00	170.00	175.00	175.00	175.00	175.00	175.00
Room (Freshmen in Penland/Collins)	1,050.00	1,124.00	1,295.00	1,364.00	1,464.00	1,560.00	1,673.00
Increase from Prior Year	7.3%	7.0%	15.2%	5.3%	7.3%	6.6%	7.2%
Board (6)	1,342.30	1,383.44	1,460.29	1,493.18	1,476.53	1,524.16	1,569.63
Increase from Prior Year	2.9%	3.1%	5.6%	2.3%	-1.1%	3.2%	3.0%

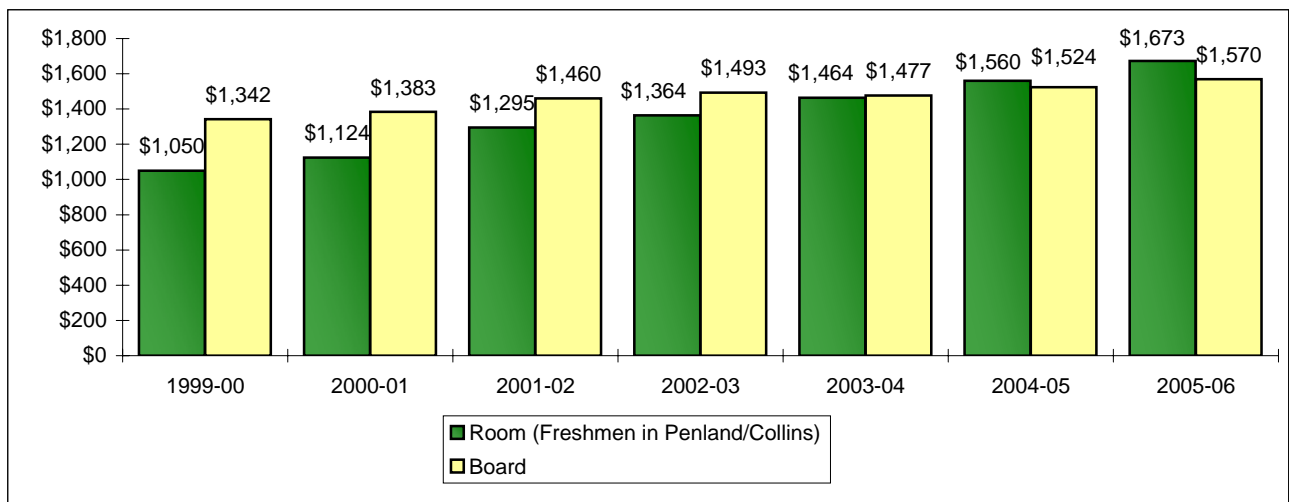
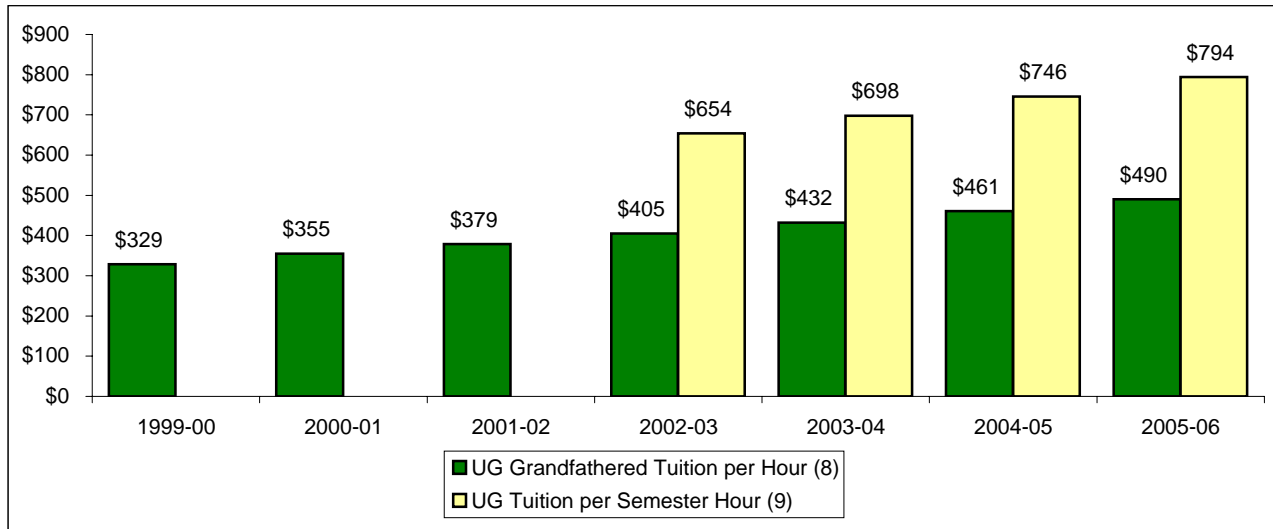
Increase in Semester Charges from 1999-00 to 2005-06:

Tuition, per semester hour	48.9%
Room	59.3%
Board	16.9%

Notes:

- (1) Supplemental charge per semester for one 30-minute lesson per week.
- (2) The Enrollment Deposit is paid to assure enrollment place and is applied on the student's first semester bill.
- (3) Minimum lab fee is noted; some courses may be higher.
- (4) Minimum charges are noted; charges vary.
- (5) Annual automobile fee (September - August).
- (6) For 1997-98 through 2000-2001, Board rate reflects the 20-meal plan, per semester, including tax. For 2001-02 through 2003-04, Board rate reflects the "Classic - 16 Plus Meal Plan," per semester, including tax. The 2003-04 through 2005-06 Board rate reflects the "Classic -16 Meal Plan" but meal plan does not include BearBucks.
- (7) Beginning in 2002-03, a flat tuition rate was instituted for new undergraduate students taking 12 or more hours per semester (Fall and Spring).
- (8) Beginning in 2002-03, the tuition per semester hour rate is applicable for students who were enrolled at Baylor prior to June 1, 2002 (grandfathered rate).
- (9) Tuition per semester hour for new students taking less than 12 hours.

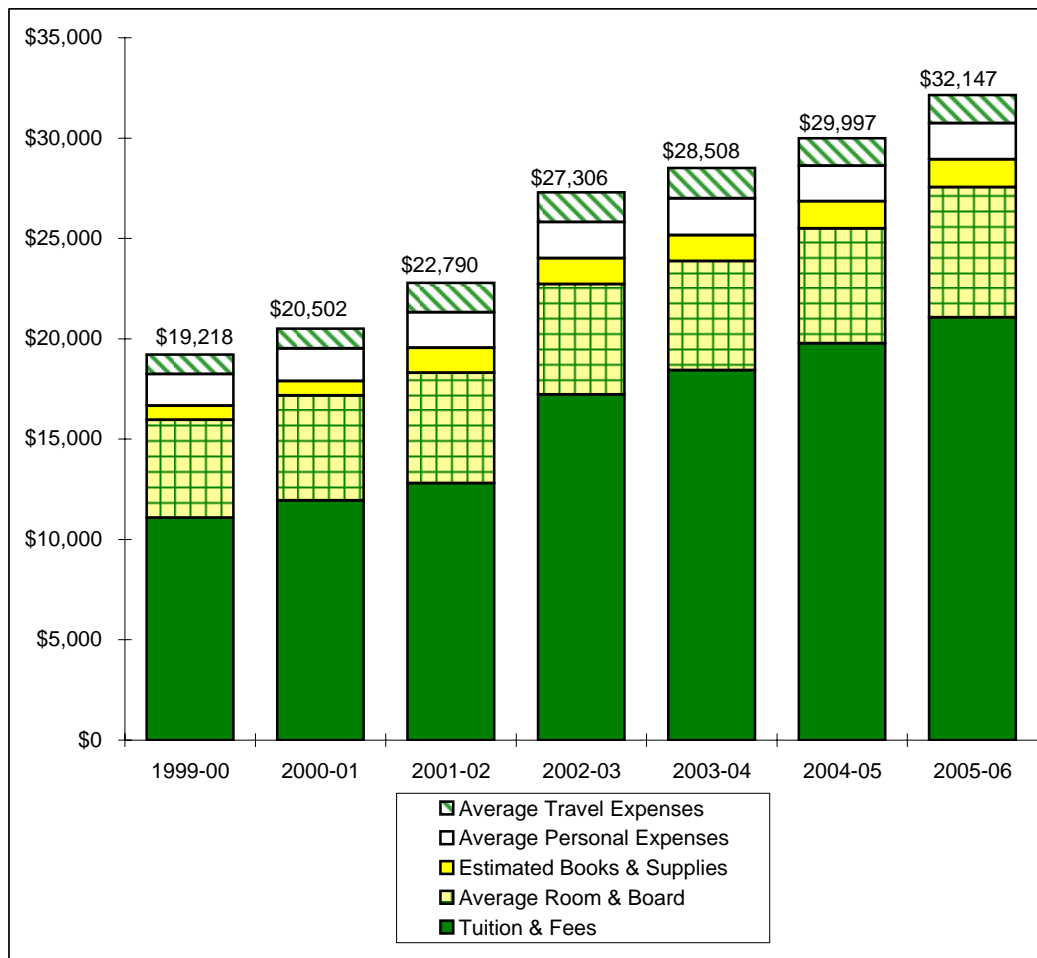
Tuition, Room and Board Charges 1999-00 through 2005-06



See notes on page 28.

Annual Undergraduate Student Cost Profile 1999-99 through 2005-06

	1999-00	2000-01	2001-02	2002-03	2003-04	2004-05	2005-06
Tuition & Fees	\$11,082	\$11,940	\$12,804	\$17,214	\$18,430	\$19,780	\$21,070
Average Room & Board	4,874	5,238	5,494	5,514	5,434	5,713	6,485
Estimated Books & Supplies	702	716	1,256	1,280	1,298	1,356	1,382
Average Personal Expenses	1,586	1,616	1,772	1,806	1,832	1,778	1,813
Average Travel Expenses	974	992	1,464	1,492	1,514	1,370	1,397
Average Total Cost	\$19,218	\$20,502	\$22,790	\$27,306	\$28,508	\$29,997	\$32,147
Increase from Prior Year	6.3%	6.7%	11.2%	19.8%	4.4%	5.2%	7.2%



Note: In 2002-03 a flat tuition rate was instituted for new students taking 12 or more hours per semester (Fall and Spring).

**Operating Funds
1998-99 through 2004-05**

Sources of Revenues

	1998-99	1999-00	2000-01	2001-02	2002-03	2003-04	2004-05
Tuition & Fees	\$131,549,785	\$145,105,566	\$161,790,383	\$180,194,091	\$205,208,253	\$228,672,157	\$253,947,979
Gifts/Private Grants	8,244,782	6,926,099	10,081,101	6,107,120	4,915,658	3,957,986	4,106,405
BGCT Appropriation	3,994,879	4,078,147	4,022,186	3,822,637	3,846,290	3,832,014	3,721,275
Endowment Income	12,111,256	12,678,477	15,075,011	13,698,822	17,771,203	21,035,555	22,429,350
Investment Income	2,364,681	2,826,020	3,772,096	1,635,000	919,715	635,674	1,333,628
Other Sources	9,599,477	13,710,214	11,459,110	12,921,478	12,434,554	13,900,817	15,406,112
Auxiliary Enterprises	35,561,127	36,679,685	39,285,440	40,185,133	39,019,089	37,156,315	40,774,330
Total Revenues	\$203,425,987	\$222,004,208	\$245,485,327	\$258,564,281	\$284,114,762	\$309,190,518	\$341,719,079

Sources of Revenues as a Percentage of Total Revenues

	1998-99	1999-00	2000-01	2001-02	2002-03	2003-04	2004-05
Tuition & Fees	64.7%	65.4%	65.9%	69.6%	72.1%	74.1%	74.4%
Gifts/Private Grants	4.1%	3.1%	4.1%	2.4%	1.7%	1.3%	1.2%
BGCT Appropriation	2.0%	1.8%	1.6%	1.5%	1.4%	1.2%	1.1%
Endowment Income	6.1%	5.8%	6.1%	5.3%	6.3%	6.8%	6.6%
Investment Income	1.2%	1.3%	1.5%	0.6%	0.3%	0.2%	0.4%
Other Sources	4.7%	6.2%	4.7%	5.0%	4.4%	4.5%	4.5%
Auxiliary Enterprises	17.5%	16.5%	16.0%	15.5%	13.6%	11.9%	11.9%
Total Revenues	100.0%	100.0%	100.0%	100.0%	100.0%	100.0%	100.0%

**Operating Funds (Continued)
1998-99 through 2004-05**

Expenditures by Function

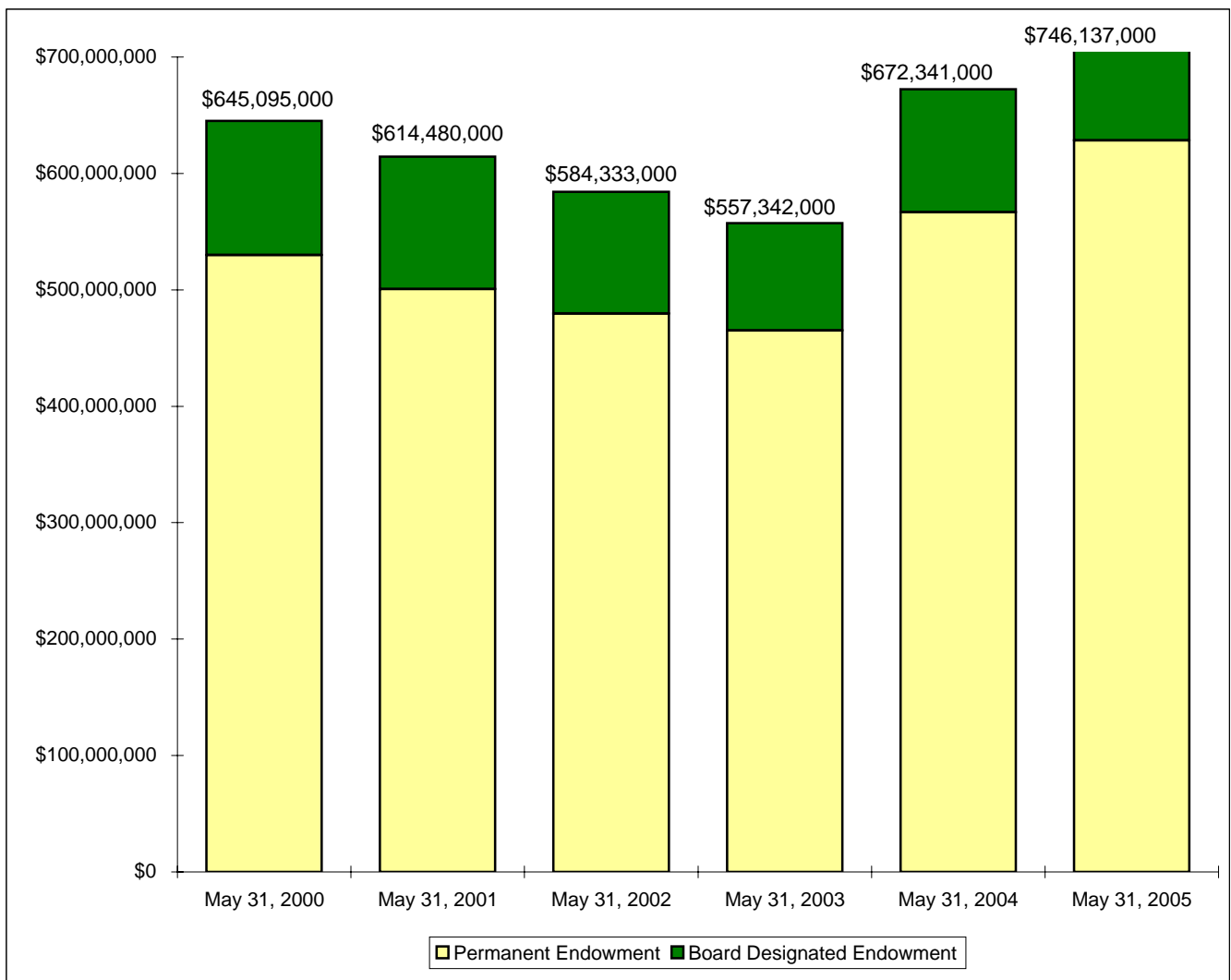
	1998-99	1999-00	2000-01	2001-02	2002-03	2003-04	2004-05
Instruction	\$73,484,863	\$78,132,224	\$82,621,971	\$92,355,519	\$102,617,463	\$109,586,442	\$113,783,712
Gifts/Private Grants	16,847,590	18,662,339	20,363,667	23,117,511	24,666,809	24,957,815	25,637,473
Student Services	9,152,085	11,165,359	11,798,452	12,849,698	14,779,593	15,177,946	19,276,167
Plant Operation/Maintenance	11,889,750	14,220,616	16,020,525	19,608,685	22,537,742	33,373,695	36,228,820
Institutional Support	23,709,606	26,511,017	28,859,740	35,095,190	37,986,315	37,244,481	37,977,656
Scholarships & Fellowships	15,630,383	18,955,785	21,932,892	27,598,589	37,529,834	47,065,860	58,837,752
Auxiliary Enterprises	35,375,307	37,884,043	42,264,498	45,428,872	46,541,207	43,784,647	45,499,135
Discretionary Transfers	17,318,040	16,453,711	21,600,154	2,497,935	(2,560,253)	(2,018,647)	4,469,901
Total Expenditures	203,407,624	221,985,094	245,461,899	258,551,999	284,098,710	309,172,239	341,710,616
Excess Revenues	\$18,363	\$19,114	\$23,428	\$12,282	\$16,052	\$18,279	\$8,463

**Gifts/Private Grants
Percentage of Total Expenditures**

	1998-99	1999-00	2000-01	2001-02	2002-03	2003-04	2004-05
Instruction	36.1%	35.2%	33.7%	35.7%	36.1%	35.4%	33.3%
Gifts/Private Grants	8.3%	8.4%	8.3%	8.9%	8.7%	8.1%	7.5%
Student Services	4.5%	5.0%	4.8%	5.0%	5.2%	4.9%	5.6%
Plant Operation/Maintenance	5.8%	6.4%	6.5%	7.6%	7.9%	10.8%	10.6%
Institutional Support	11.7%	11.9%	11.8%	13.6%	13.4%	12.0%	11.1%
Scholarships & Fellowships	7.7%	8.5%	8.9%	10.7%	13.2%	15.2%	17.2%
Auxiliary Enterprises	17.4%	17.1%	17.2%	17.6%	16.4%	14.2%	13.3%
Discretionary Transfers	8.5%	7.4%	8.8%	1.0%	-0.9%	-0.7%	1.3%
Total Expenditures	100.0%	100.0%	100.0%	100.0%	100.0%	100.0%	100.0%

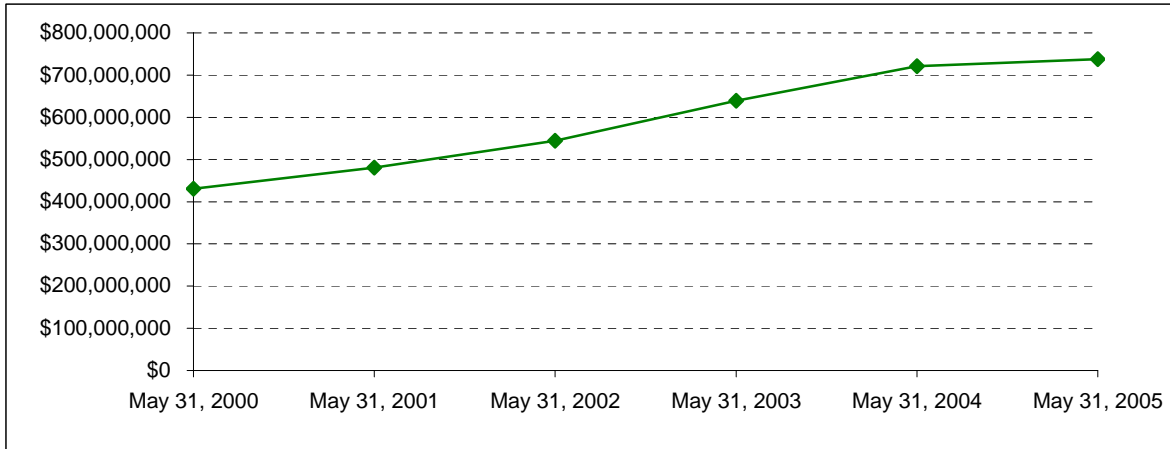
**Endowment Fund Balance - Market Value
May 31, 2000 through May 31, 2005**

	May 31, 2000	May 31, 2001	May 31, 2002	May 31, 2003	May 31, 2004	May 31, 2005
Permanent Endowment	\$529,979,000	\$500,739,000	\$479,728,000	\$465,189,000	\$566,655,000	\$628,503,000
Board Designated Endowment	115,116,000	113,741,000	104,605,000	92,153,000	105,686,000	117,634,000
Total Endowment	\$645,095,000	\$614,480,000	\$584,333,000	\$557,342,000	\$672,341,000	\$746,137,000
Permanent Endowment	82.2%	81.5%	82.1%	83.5%	84.3%	84.2%
Board Designated Endowment	17.8%	18.5%	17.9%	16.5%	15.7%	15.8%
Total Endowment	100.0%	100.0%	100.0%	100.0%	100.0%	100.0%



**Property, Plant and Equipment*
May 31, 2000 through May 31, 2005**

Property, Plant & Equipment	May 31, 2000	May 31, 2001	May 31, 2002	May 31, 2003	May 31, 2004	May 31, 2005
	\$430,619,000	\$480,878,000	\$544,541,000	\$638,914,000	\$720,816,000	\$738,186,000



*Does not reflect the impact of accumulated depreciation.

	May 31, 2000	May 31, 2001	May 31, 2002	May 31, 2003	May 31, 2004	May 31, 2005
Net Assets	\$941,304,000	\$945,490,000	\$899,185,000	\$850,735,000	\$989,916,000	\$1,059,904,000
Total Assets	\$1,043,535,000	\$1,056,374,000	\$1,238,399,000	\$1,230,551,000	\$1,363,089,000	\$1,426,295,000

