




Baylor Trends

For the years 1991 - 1997


ENROLLMENT AND STUDENT CHARACTERISTICS:

1. [New Freshman Applications and Enrollment](#)
2. [Transfer Applications and Enrollment](#)
3. [New Freshman Applications and Enrollment by Gender](#)
4. [New Freshman and Transfer Student Enrollment](#)
5. [Enrollment by Classification](#)
6. [Enrollment](#)
7. [Enrollment by Gender, Waco Campus](#)
8. [Enrollment by Religious Affiliation, Waco Campus](#)
9. [Baptist Percentage, Waco Campus](#)
10. [Enrollment by Racial/Ethnic Group](#)
11. [Racial/Ethnic Minority Percentage](#)
12. [Leading Texas Counties of Origin](#)
13. [Leading States of Origin](#)
14. [Percentage from Top Four Texas Counties](#)
15. [Percentage from Texas](#)
16. [Texas Enrollment by County](#)
17. [Enrollment by State](#)
18. [Countries Represented by Nonresident Aliens](#)
19. [Percentage of Nonresident Aliens](#)
20. [Enrollment by Unit](#)
21. [Enrollment Percentage by Unit](#)
22. [Student Credit Hours by Unit, Waco Campus](#)
23. [Retention of First-Time Freshman Classes](#)
24. [Distribution of Degrees](#)
25. [Summary of Degrees Awarded](#)
26. [Degree Programs](#)


FACULTY AND STAFF:

1. [Full-Time Faculty Positions](#)
 2. [Highest Degree Earned by Full-Time Faculty](#)
 3. [Percentage of Full-Time Faculty with Tenure](#)
 4. [Average Salaries of Full-Time Instructional Faculty on Academic Year Contracts](#)
 5. [Average Compensation of Full-Time Instructional Faculty on Academic Year Contracts](#)
 6. [Institutional Staff](#)
 7. [Percentage of Institutional Staff](#)
- 

FINANCIAL:

1. [Tuition and Other Semester Charges](#)
 2. [Tuition, Room and Board Charges](#)
 3. [Undergraduate Student Cost Profile](#)
- 

Current Funds:

1. [Sources of Revenues](#)
 2. [Sources of Revenue as a Percentage of Total Revenues](#)
 3. [Revenues](#)
 4. [Functions of Expenditures](#)
 5. [Functions of Expenditures as a Percentage of Total Expenditures and Mandatory Transfers](#)
 6. [Endowment Fund Balance](#)
 7. [Property, Plant and Equipment](#)
 8. [Assets](#)
- 

Prepared by:
The Office of Information Management and Testing
Services
<http://www3.baylor.edu/IMTS/>

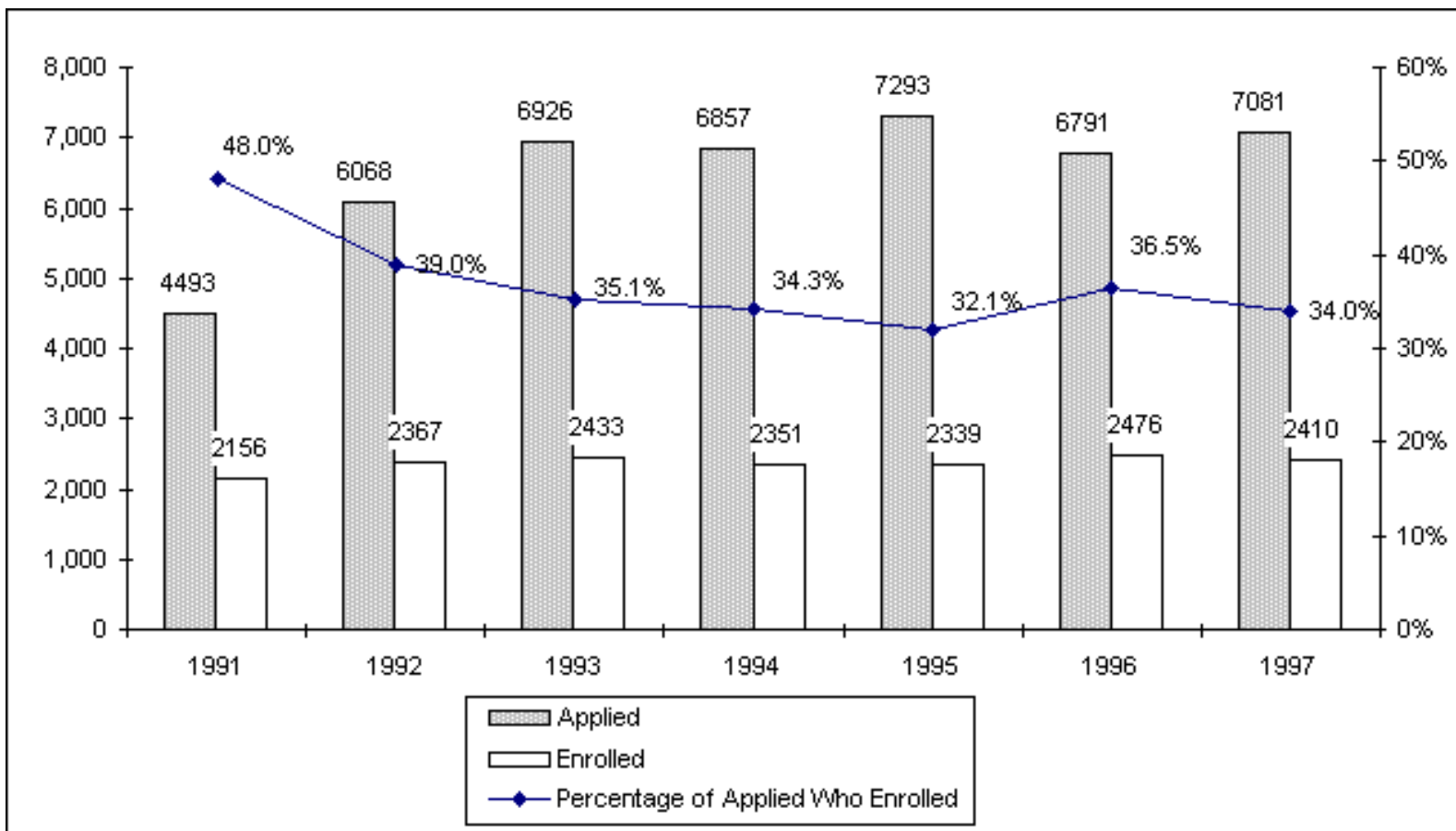
&
The Admissions Office
<http://www3.baylor.edu/~Admissions>

Please submit all questions and comments to IMTSwebmaster@baylor.edu



TRENDS FOR FALL 1991 - FALL 1997

**New Freshman Applications* and Enrollment
Fall 1991 - Fall 1997**



* Application that were canceled and changed to future terms not included.

Sources: Admissions Office (1991-1997); IMTS (1991-1997).



[Back to Table of Contents](#)

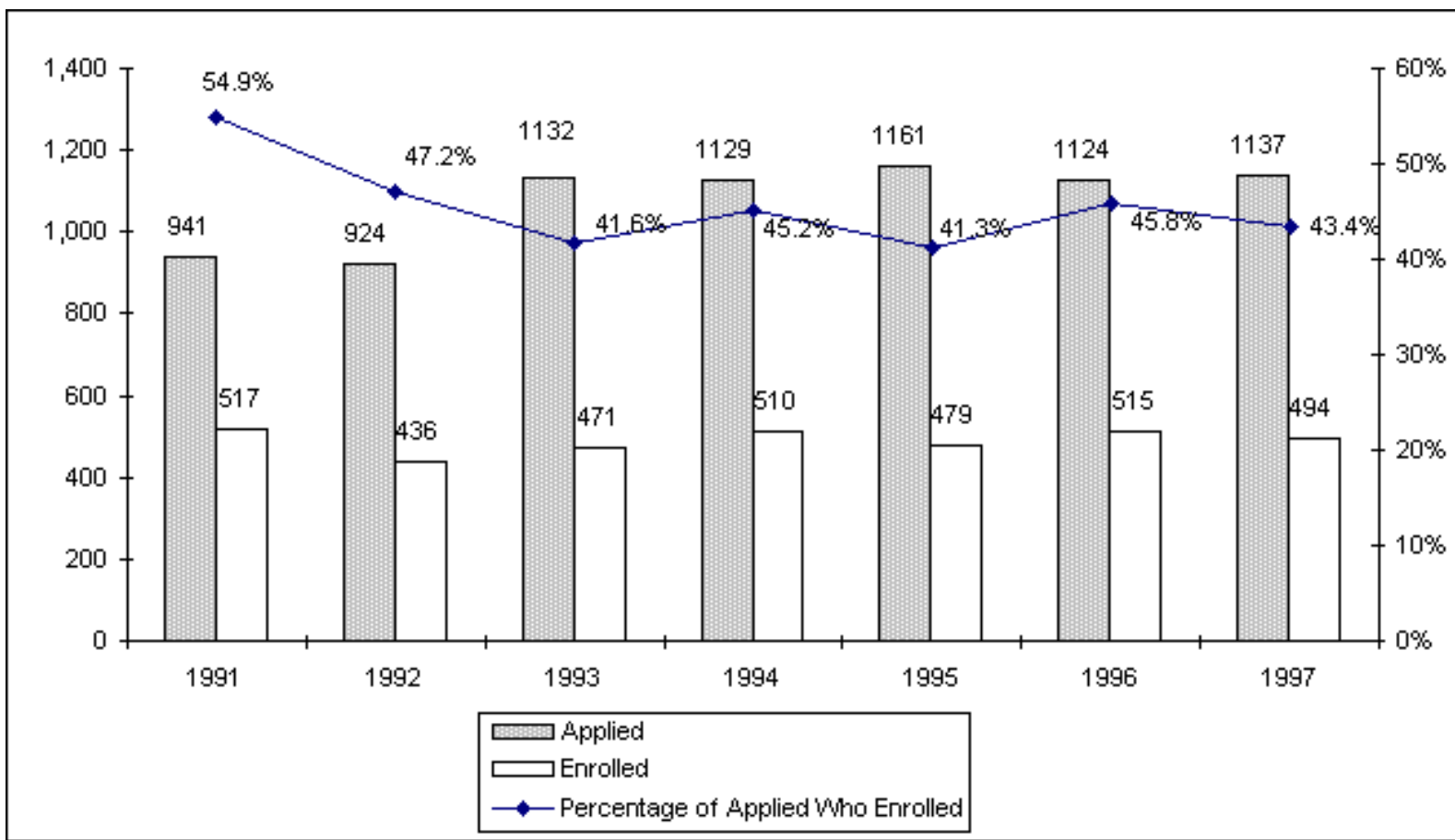
Next Report: Transfer Applications and Enrollment





TRENDS FOR FALL 1991 - FALL 1997

**Transfer Applications * and Enrollment
Fall 1991 - Fall 1997**



* Application that were canceled and changed to future terms not included.

Sources: Admissions Office (1991-1997); IMTS (1991-1997).



[Back to Table of Contents](#)

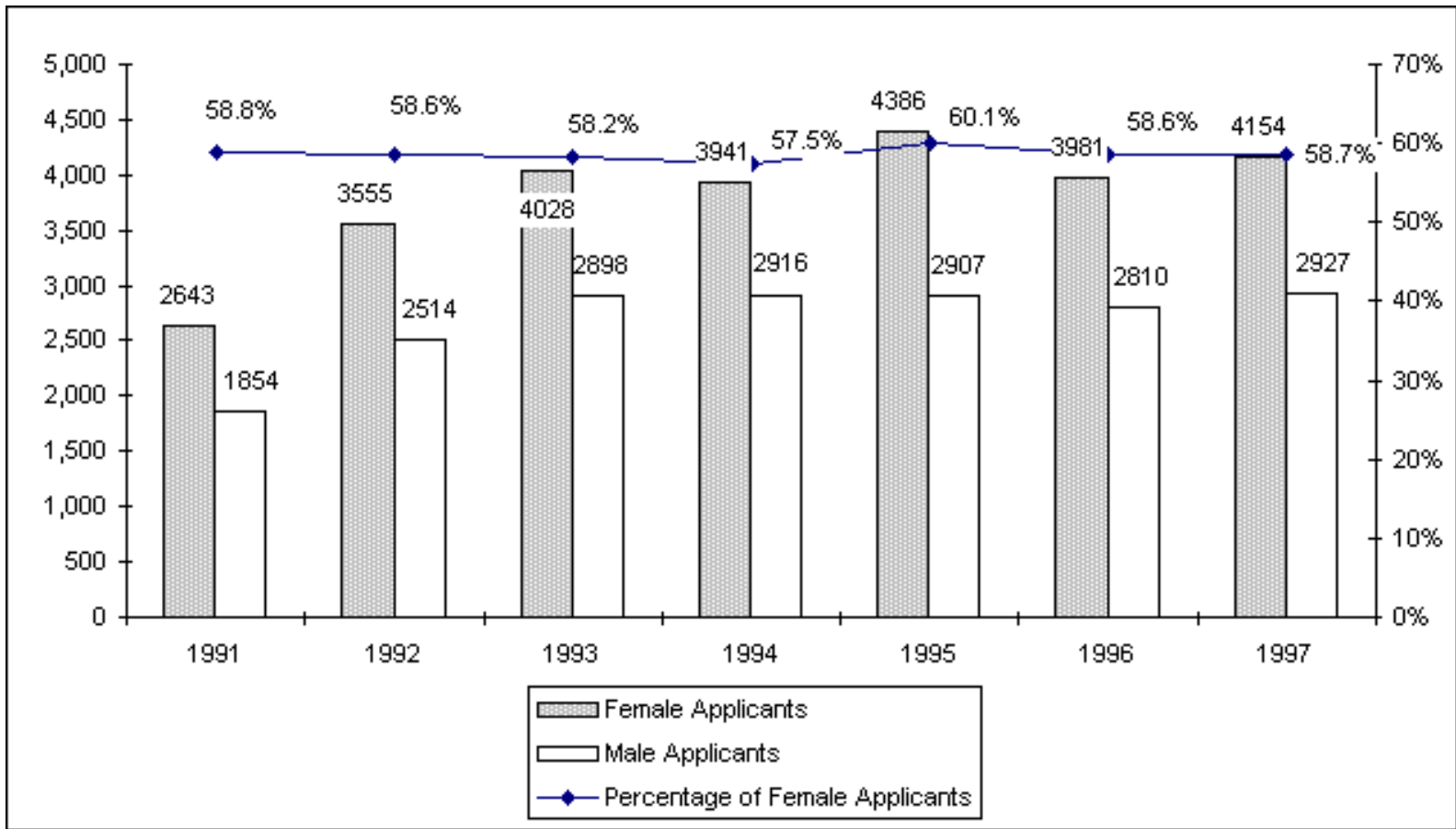
Next Report: New Freshman Applications and Enrollment by Gender

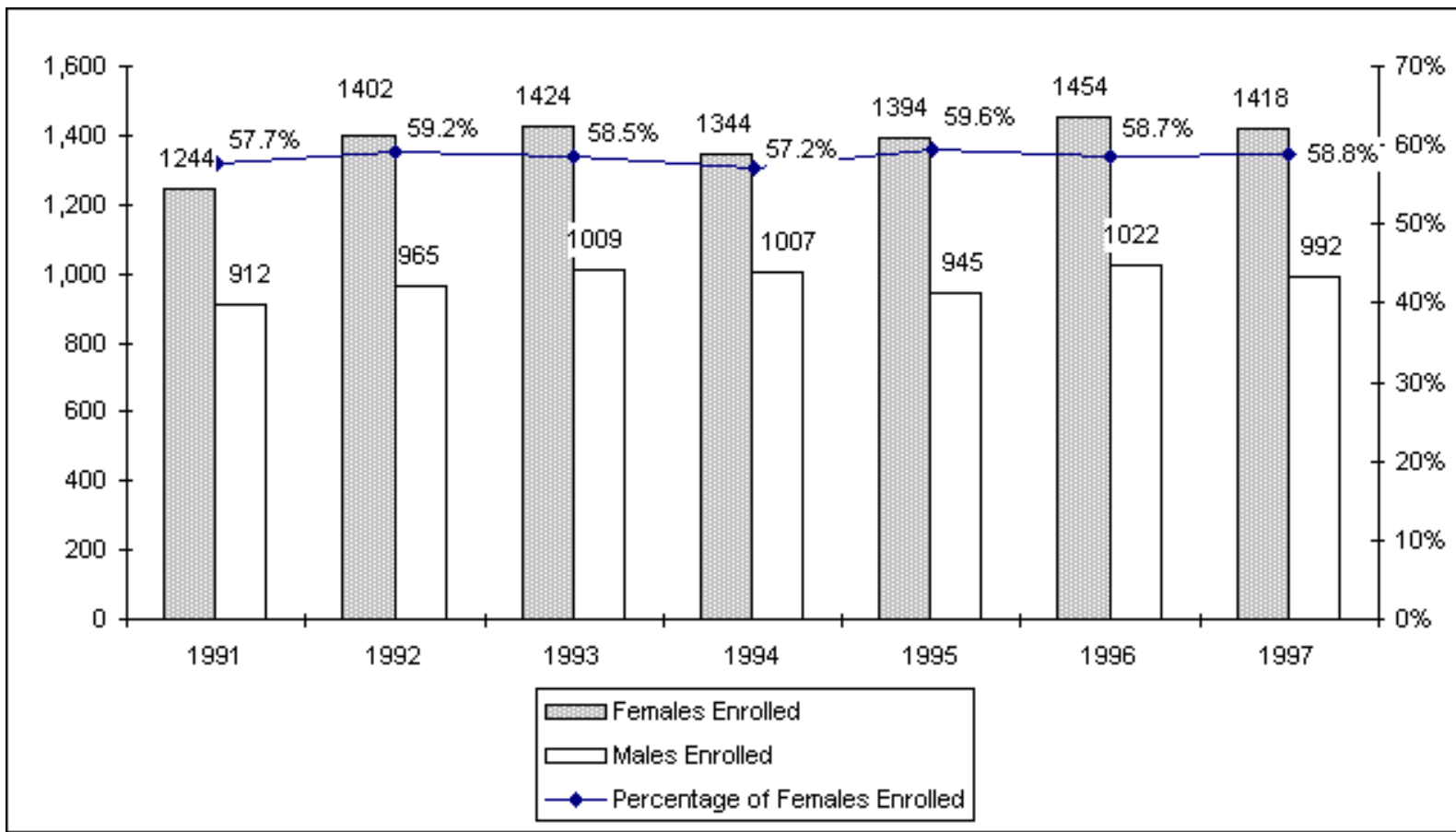




Trends for 1991-1997.

**New Freshman Applications * and Enrollment by Gender
Fall 1991- Fall 1997**





* Applications that were canceled and changed to future terms not included.

Sources: Admissions Office (1991-1997); IMTS (1991-1997).



[Back to Table of Contents](#)

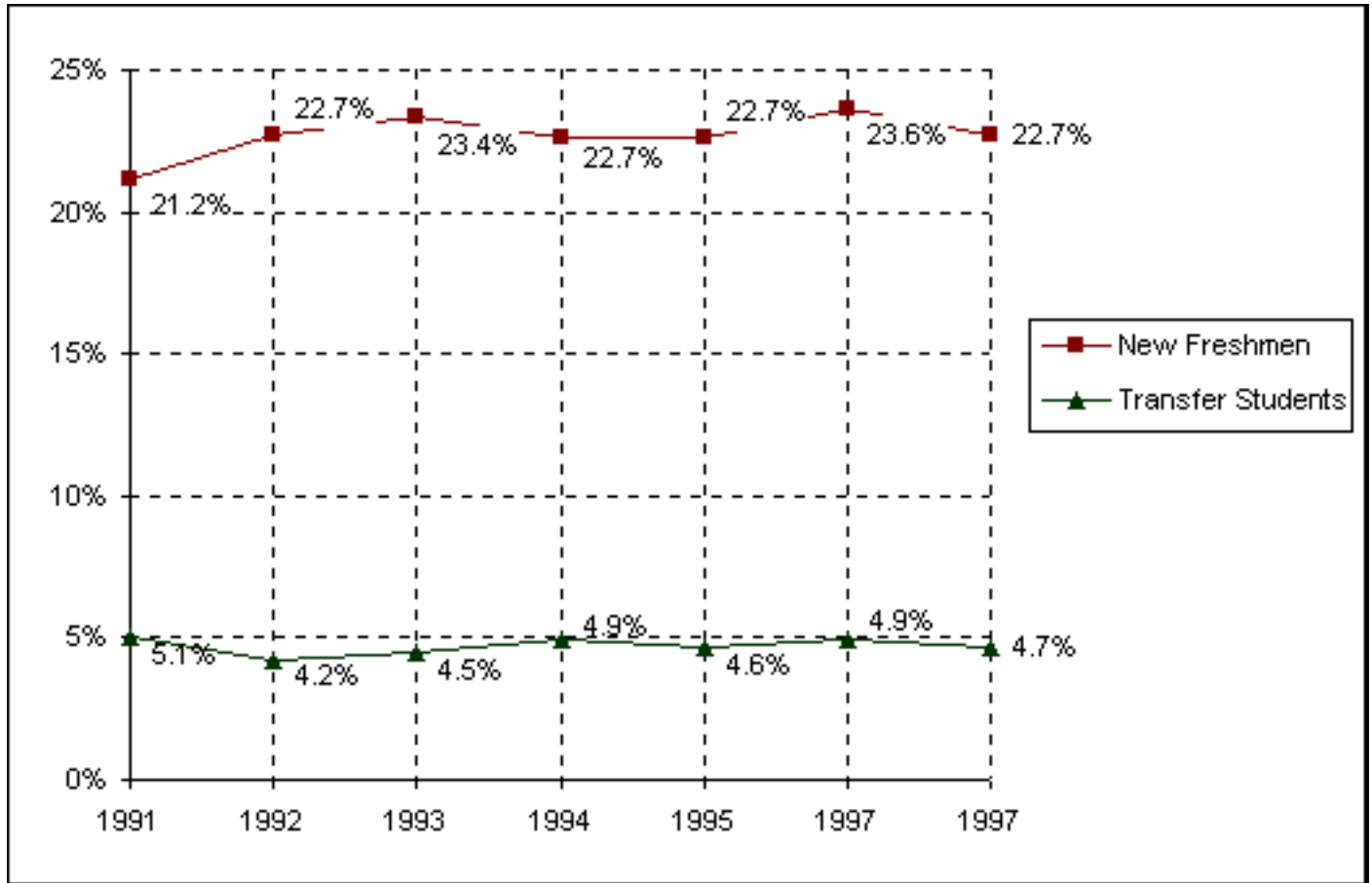
Next Report: New Freshman and Transfer Student Enrollment





Trends for 1991-1997.

New Freshman and Transfer Student Enrollment
Fall 1991- Fall 1997



	Fall	1991	1992	1993	1994	1995	1996	1997
New Freshmen		2,156	2,367	2,433	2,351	2,339	2,476	2,410
Transfer Students		517	436	471	510	479	515	494

Undergraduate Enrollment	10,180	10,421	10,403	10,373	10,323	10,500	10,597
% New Freshmen	21.2%	22.7%	23.4%	22.7%	22.7%	23.6%	22.7%
% Transfer Students	5.1%	4.2%	4.5%	4.9%	4.6%	4.9%	4.7%

Notes:

1. Freshmen who enter the University in the fall or preceding summer term are counted as "new freshmen." Similarly, transfer students entering in the fall or preceding summer term are counted as "transfer students" for the fall semester.
2. "Transfer students" refers to the entering summer/fall group of transfer students. For example, in Fall 1996, the 515 entering transfer students comprised 4.9% of the 10,500 undergraduates. However, for Fall 1996, the total number of enrolled undergraduates who had transferred into the University consisted of (a) transfers who entered in Fall 1996 and (b) students who transferred into the University in previous academic years. Generally, the total enrollment of students who had entered as transfer students is approximately 15% of the undergraduate student body.

Sources: Admissions Office (1991-1997); IMTS (1991-1997).



[Back to Table of Contents](#)

Next: Enrollment by Classification





Trends for 1991-1997.

Enrollment by Classification

	Fall	1991	1992	1993	1994	1995	1996	1997
Freshman		3,171	3,226	3,256	3,205	3,043	3,151	3,070
Sophomore		2,344	2,245	2,075	2,183	2,230	2,210	2,458
Junior		2,091	2,074	2,069	2,041	2,182	2,166	2,139
Senior		2,397	2,652	2,815	2,686	2,646	2,819	2,774
Special		19	27	32	54	22	26	40
Special Postbaccalaureate		124	148	107				
Postbaccalaureate		34	49	49	204	200	128	116
TOTAL UNDERGRADUATE		10,180	10,421	10,403	10,373	10,323	10,500	10,597
Master's		927	1,043	1,055	1,047	1,022	989	945
Doctoral		244	272	306	316	347	349	356
Graduate Transient/Nondegree		19	27	18			23	28
Special Graduate				5	57	40	9	20
Law		440	422	407	396	394	398	396

Seminary				51	76	123	130
TOTAL ENROLLMENT	11,810	12,185	12,194	12,240	12,202	12,391	12,472

Source: IMTS (1991 - 1997)



[Back to Table of Contents](#)

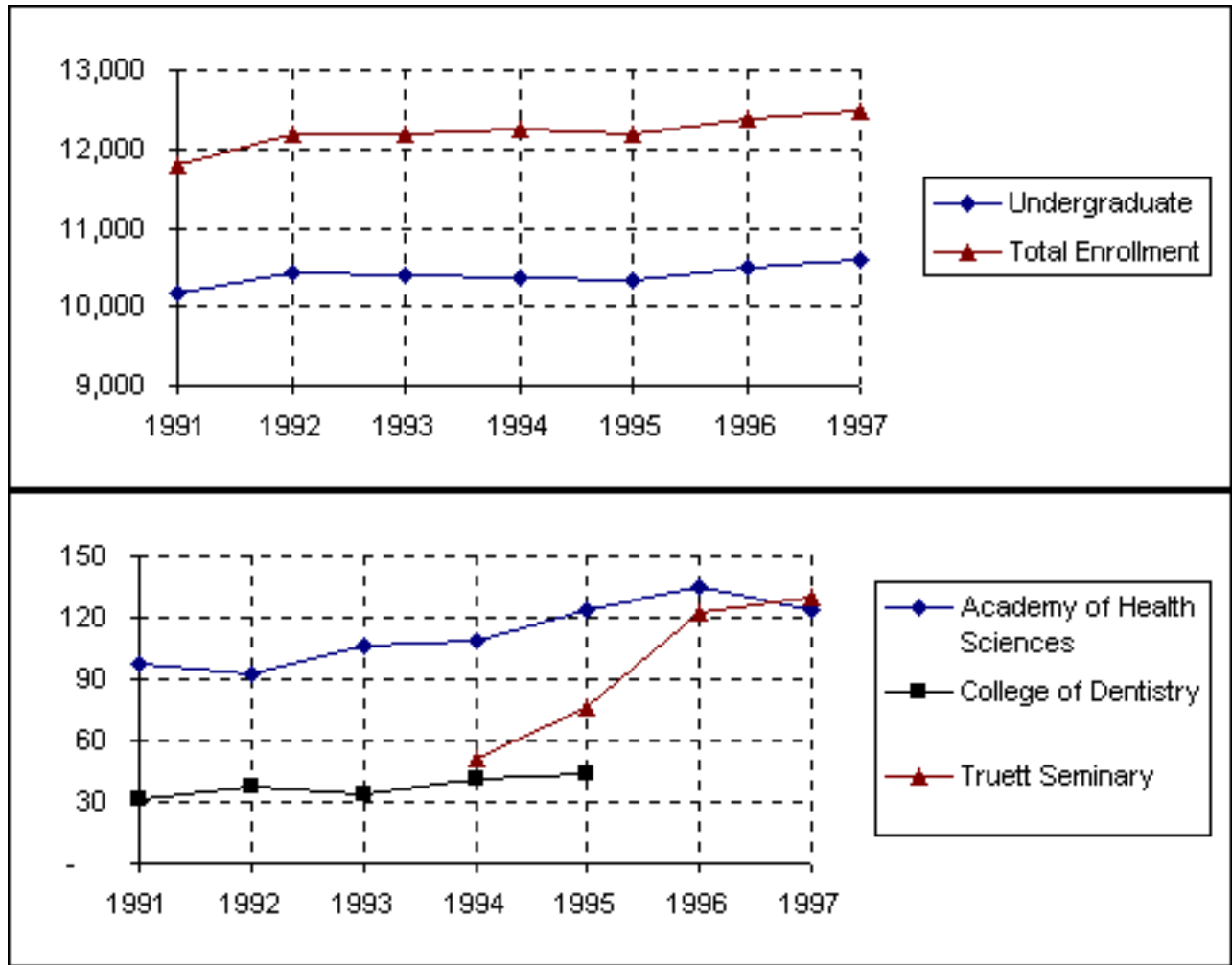
Next: Enrollment

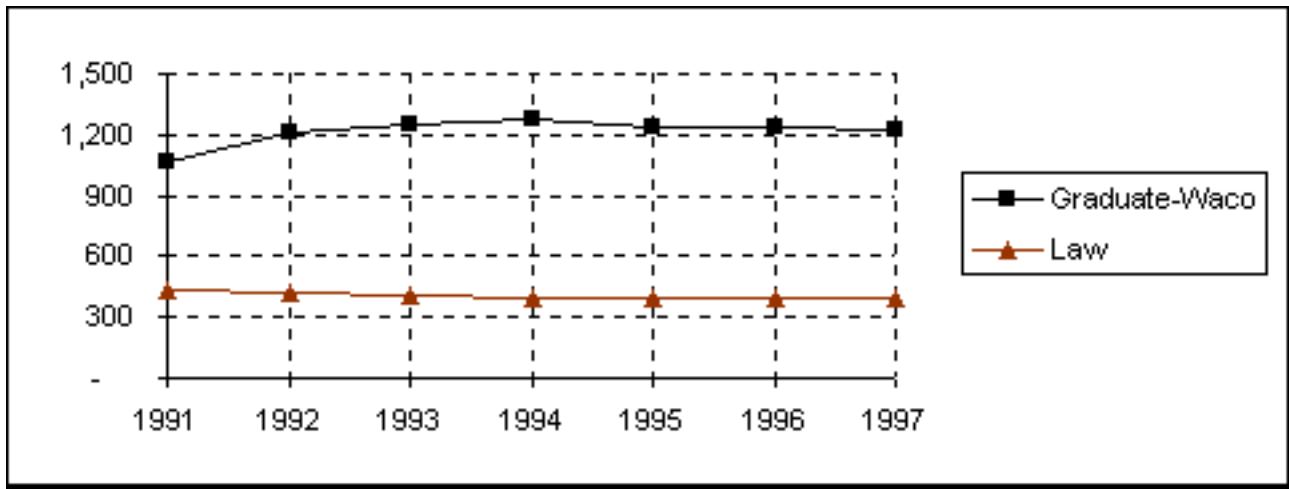




Trends for 1991-1997.

Enrollment





	Fall	1991	1992	1993	1994	1995	1996	1997
Undergraduate		10,180	10,421	10,403	10,373	10,323	10,500	10,597
Graduate - Waco		1,062	1,213	1,244	1,270	1,241	1,235	1,225
Law		440	422	407	396	394	398	396
Truett Seminary					51	76	123	130
TOTAL WACO CAMPUS		11,682	12,056	12,054	12,090	12,034	12,256	12,348
College of Dentistry		31	37	34	41	44		
Academy of Health Sciences		97	92	106	109	124	135	124
TOTAL ENROLLMENT		11,810	12,185	12,194	12,240	12,202	12,391	12,472
Source: IMTS (1991-1997).								

Source: IMTS (1991 - 1997)



[Back to Table of Contents](#)

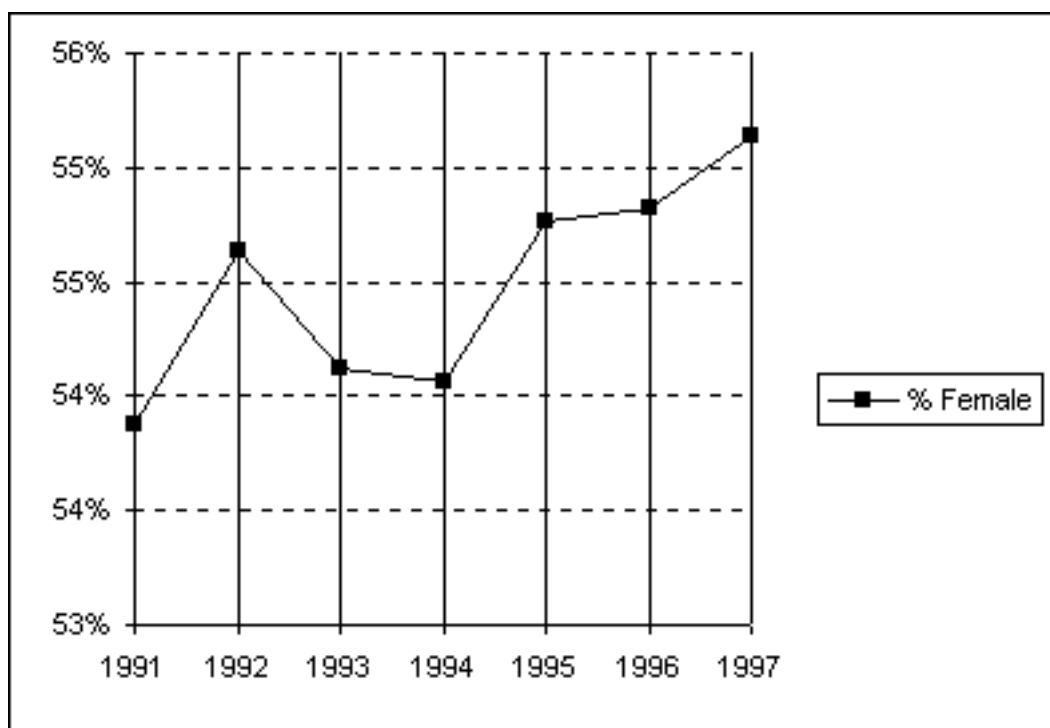
Next: Enrollment by Gender, Waco Campus





Trends for 1991-1997.

Enrollment by Gender Waco Campus Fall 1991 - Fall 1997



Fall	1991	1992	1993	1994	1995	1996	1997
Female	6,294	6,587	6,524	6,536	6,591	6,719	6,809
Male	5,388	5,469	5,530	5,554	5,443	5,537	5,539
Waco Campus	11,682	12,056	12,054	12,090	12,034	12,256	12,348

% Female	53.9%	54.6%	54.1%	54.1%	54.8%	54.8%	55.1%
% Male	46.1%	45.4%	45.9%	45.9%	45.2%	45.2%	44.9%

Source: IMTS (1991 - 1997)



[Back to Table of Contents](#)

Next: Enrollment by Religious Affiliation





Trends for 1991-1997.

Enrollment by Religious Affiliation Waco Campus Fall 1991 - Fall 1997

	Fall	1991	1992	1993	1994	1995	1996	1997
Assembly of God		146	137	155	162	149	157	148
Baptist		5,754	5,746	5,546	5,350	5,192	5,208	5,247
Buddhist		37	57	62	73	84	75	66
Catholic		1,099	1,287	1,388	1,500	1,511	1,528	1,544
Christian Scientist		5	7	8	9	8	8	6
Church of Christ		232	257	255	242	269	246	243
Church of God		27	22	18	19	23	32	18
Congregational		35	26	28	24	21	20	14
Disciples of Christ		88	96	100	92	89	85	83
Eastern Orthodox		26	33	29	45	44	44	45
Episcopalian		339	312	315	314	307	289	271
Four Square Gospel		3	3	6	8	9	13	11
Hindu		-	-	29	50	59	65	75
Interdenominational		215	272	310	332	370	389	403
Jehovah's Witness		6	6	9	9	7	9	9
Jewish		10	15	18	18	17	10	10
Latter Day Saints (Mormon)		13	14	6	21	22	19	19
Lutheran		337	327	335	356	363	383	346

Mennonite	6	5	6	5	4	4	3
Methodist	1,275	1,279	1,268	1,241	1,227	1,274	1,190
Moslem	21	23	25	42	48	55	56
Nazarene	27	24	29	29	23	27	30
Pentecostal	40	44	49	57	68	74	72
Presbyterian	546	571	571	608	554	542	528
Society of Friends	3	4	1	6	7	7	6
Unitarian	5	5	6	9	9	11	8
United Brethren	2	2	2	3	3	5	6
Other/Not Specified	1,385	1,482	1,470	1,466	1,547	1,677	1,891
TOTAL RELIGION	11,682	12,056	12,044	12,090	12,034	12,256	12,348

Source: IMTS (1991 - 1997)



[Back to Table of Contents](#)

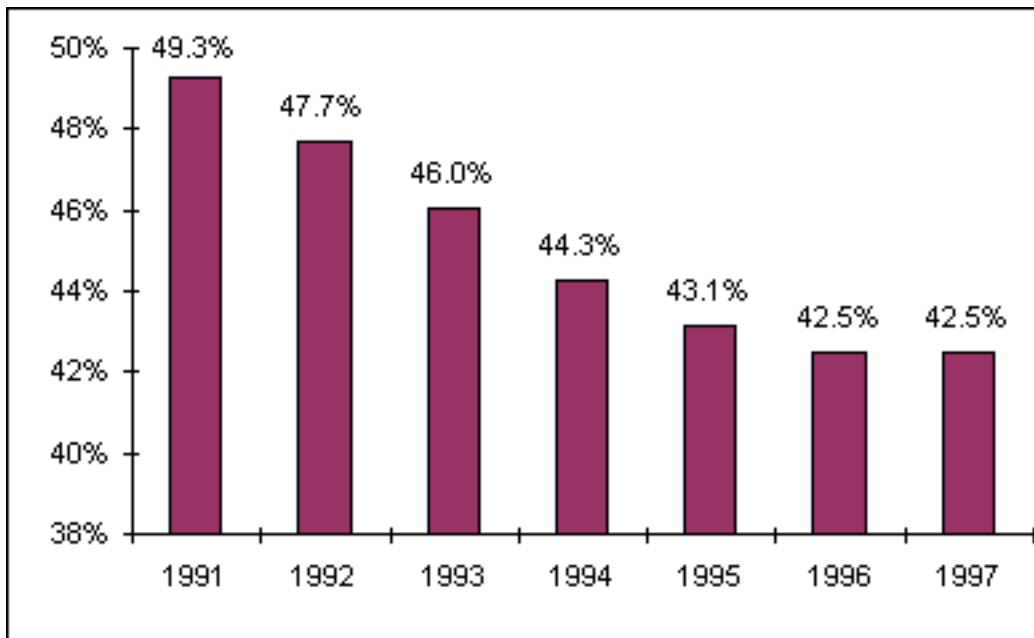
Next: Baptist Percentage, Waco Campus





Trends for 1991-1997.

Baptist Percentage
Waco Campus
Fall 1991- Fall 1997



Source: IMTS (1991 - 1997)



[Back to Table of Contents](#)

Next: Enrollment by Racial/Ethnic Group





Trends for 1991-1997.

Enrollment by Racial / Ethnic Group
Fall 1991 - Fall 1997

A.		Fall	1991	1992	1993	1994	1995	1996	1997
	African American/Black		401	450	493	517	529	623	685
	American Indian/Alaskan Native		40	45	55	46	60	60	64
	Asian/Pacific Islander		551	669	724	770	777	796	793
	Hispanic		564	696	776	902	956	931	917
	White		10,176	10,221	10,018	9,824	9,662	9,739	9,717
	Other		74	94	95	115	129	149	178
	Not Specified		4	10	33	66	89	93	118
	Total		11,810	12,185	12,194	12,240	12,202	12,391	12,472
B.		Fall	1991	1992	1993	1994	1995	1996	1997
	African American/Black		388	438	480	502	517	609	675

American Indian/Alaskan Native	39	45	55	46	60	60	63
Asian/Pacific Islander	439	504	561	615	633	646	635
Hispanic	537	670	741	856	912	893	880
White	10,121	10,160	9,958	9,750	9,598	9,681	9,656
Other	53	67	64	88	97	120	149
Not Specified	4	8	33	61	77	81	112
NONRESIDENT ALIEN	229	293	302	322	308	301	302
Total	11,810	12,185	12,194	12,240	12,202	12,391	12,472
* In Table B, nonresident aliens are partitioned as a group.							

Source: IMTS (1991-1997)



[Back to Table of Contents](#)

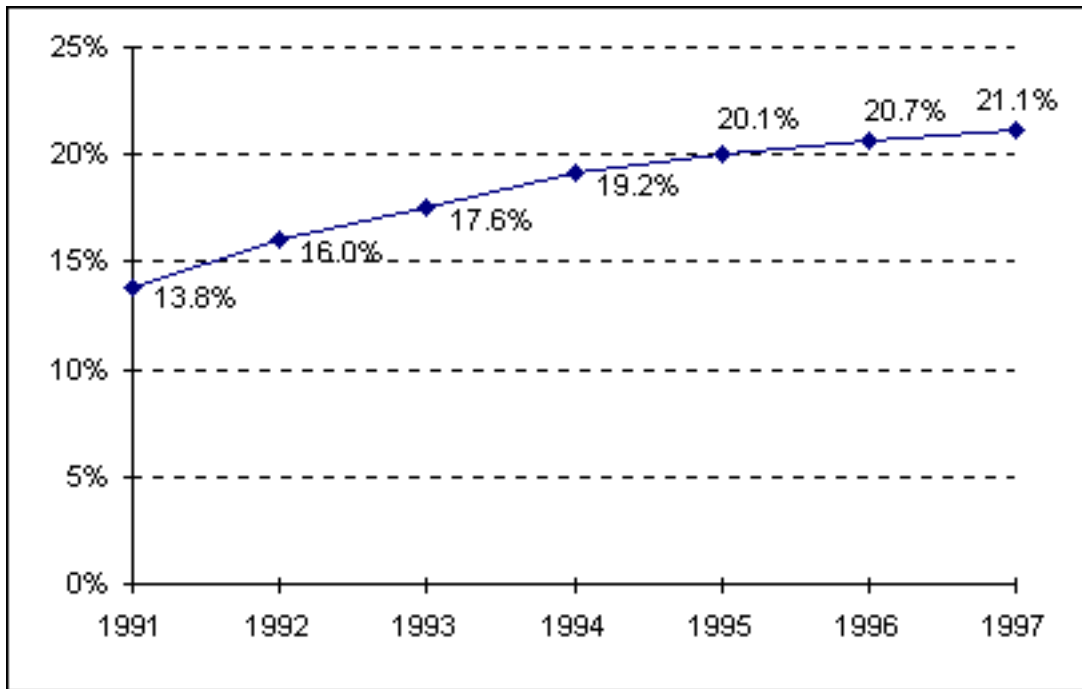
Next: Racial / Ethnic Minority Percentage





Trends for 1991-1997.

**Racial/Ethnic Minority Percentage
Fall 1991 - Fall 1997
From [Table A](#)**



Source: IMTS (1991-1997)



[Back to Table of Contents](#)

Next :Leading Texas Counties of Origin





Trends for 1991-1997.

Leading Texas Counties of Origin

Fall	1991	1992	1993	1994	1995	1996	1997
McLennan	1,827	2,031	1,965	1,946	2,033	2,030	2,020
Harris	1,499	1,489	1,427	1,395	1,328	1,425	1,505
Dallas	1,208	1,200	1,188	1,146	1,120	1,080	1,125
Tarrant	681	712	646	663	714	675	726
Bexar	437	476	466	478	460	489	508
Collin	236	231	264	278	277	302	304
Travis	219	244	253	255	248	242	238
Bell	153	157	170	204	200	220	220
Fort Bend	121	133	141	143	165	172	194
Montgomery	79	94	110	122	136	151	184
Denton	106	93	96	88	103	124	139
Gregg	93	100	118	125	122	126	125
Williamson	78	79	92	97	96	110	110
Galveston	92	88	104	113	102	104	106
Smith	102	92	93	93	85	90	97
Nueces	94	102	96	98	92	89	93

Hidalgo	80	81	97	113	115	105	87
El Paso	79	91	96	93	94	90	78
Jefferson	78	93	89	79	77	77	78

Source: ICUT (1991-1997)



[Back to Table of Contents](#)

Next: Leading States of Origin





Trends for 1991-1997.

Leading States of Origin

Fall	1991	1992	1993	1994	1995	1996	1997
Texas	9,163	9,483	9,376	9,360	9,311	9,579	9,811
California	170	188	227	247	259	286	278
Oklahoma	261	250	246	238	245	254	247
Louisiana	192	168	183	181	180	163	157
Colorado	137	139	139	142	148	145	149
Arkansas	167	166	145	155	154	157	140
Missouri	189	191	205	177	150	148	122
Kansas	102	107	116	121	108	111	105
Tennessee	134	132	132	132	118	99	103

Source: ICUT (1991-1997)



[Back to Table of Contents](#)

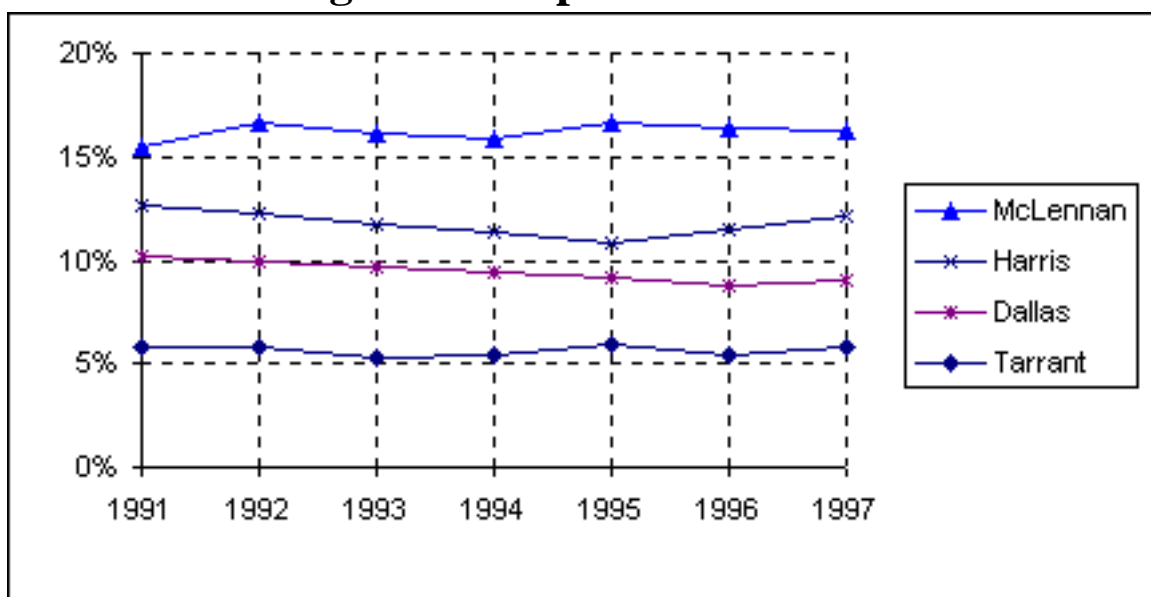
Next: Percentage from Top Four Texas Counties





Trends for 1991-1997.

Percentage from Top Four Texas Counties



Fall	1991	1992	1993	1994	1995	1996	1997
McLennan	15.5%	16.7%	16.1%	15.9%	16.7%	16.4%	16.2%
Harris	12.7%	12.2%	11.7%	11.4%	10.9%	11.5%	12.1%
Dallas	10.2%	9.9%	9.7%	9.4%	9.2%	8.7%	9.0%
Tarrant	5.8%	5.8%	5.3%	5.4%	5.9%	5.4%	5.8%

Source: ICUT (1991-1997)



[Back to Table of Contents](#)

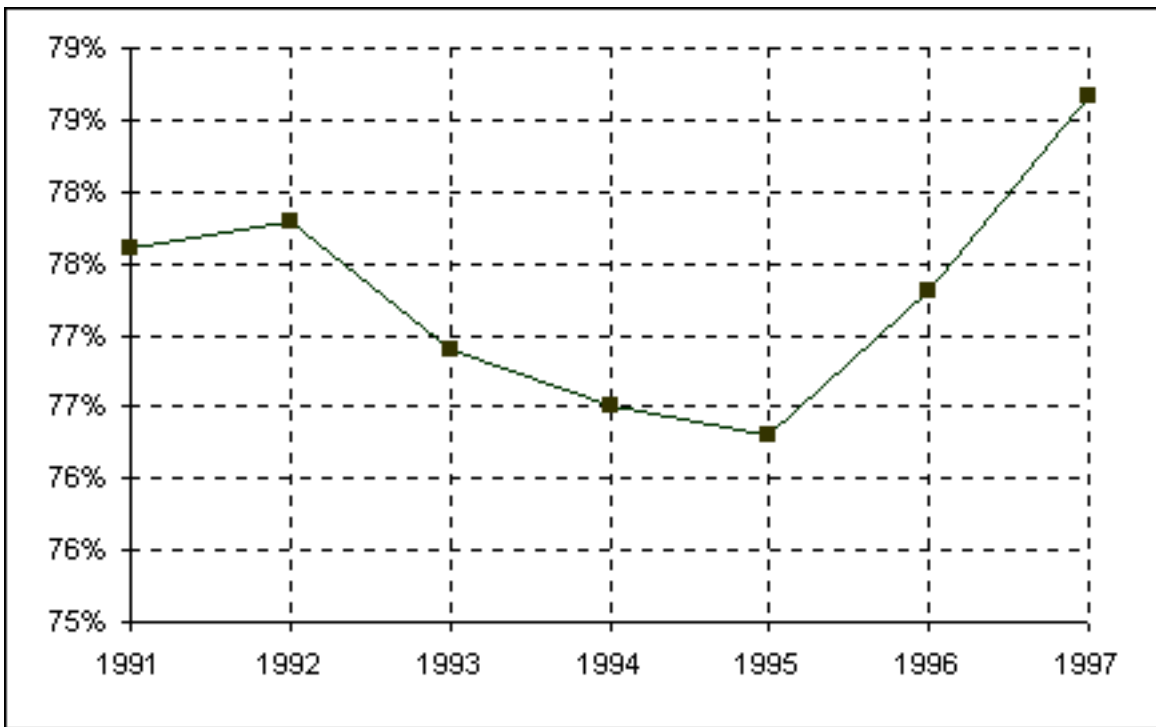
Next: Percentage from Texas





Trends for 1991-1997.

Percentage from Texas



Source: ICUT (1991-1997)



[Back to Table of Contents](#)

Next: Texas Enrollment by County





Trends for 1991-1997.

Texas Enrollment by County


	n		n		n		n		n
Anderson	21	Crane	4	Hartley	0	Madison	0	San Patricio	12
Andrews	2	Crockett	0	Haskell	1	Marion	2	San Saba	2
Angelina	19	Crosby	1	Hays	33	Martin	1	Schleicher	2
Aransas	7	Culberson	1	Hemphill	0	Mason	0	Scurry	5
Archer	1	Dallam	0	Henderson	15	Matagorda	8	Shackelford	1
Armstrong	0	Dallas	1,125	Hidalgo	87	Maverick	16	Shelby	8
Atascosa	8	Dawson	2	Hill	49	McCulloch	0	Sherman	0
Austin	9	De Witt	4	Hockley	3	McLennan	2,020	Smith	97
Bailey	2	Deaf Smith	1	Hood	11	McMullen	0	Somervell	3
Bandera	3	Delta	1	Hopkins	16	Medina	3	Starr	3
Bastrop	13	Denton	139	Houtson	5	Menard	0	Stephens	1
Baylor	0	Dickens	0	Howard	3	Midland	48	Sterling	1
Bee	2	Dimmit	0	Husdpth	0	Milam	18	Stonewall	0
Bell	220	Donley	1	Hunt	15	Mills	1	Sutton	1
Bexar	508	Duval	1	Hutchinson	11	Mitchell	1	Swisher	2

Blanco	2	Eastland	7	Irion	0	Montague	4	Tarrant	726
Borden	0	Ector	30	Jack	4	Montgomery	184	Taylor	48
Bosque	24	Edwards	0	Jackson	6	Moore	8	Terrell	0
Bowie	15	El Paso	78	Jasper	15	Morris	4	Terry	1
Brazoria	61	Ellis	49	Jeff Davis	0	Motley	0	Throckmorton	0
Brazos	40	Erath	8	Jefferson	78	Nacagdoches	18	Titus	23
Brewster	2	Falls	26	Jim Hogg	0	Navarro	24	Tom Green	24
Briscoe	0	Fannin	7	Jlm Wells	11	Newton	1	Travis	238
Brooks	1	Fayette	3	Johnson	56	Nolan	10	Trinity	2
Brown	10	Fisher	0	Jones	2	Nueces	93	Tyler	2
Burleson	6	Floyd	0	Karnes	4	Ochiltree	0	Upshur	10
Burnett	15	Foard	0	Kaufman	24	Oldham	0	Upton	1
Caldwell	8	Fort Bend	194	Kendall	18	Orange	14	Uvalde	5
Calhoun	5	Franklin	6	Kenedy	0	Palo Pinto	6	Val Verde	5
Callahan	1	Freestone	13	Kent	0	Panola	12	Van Zandt	5
Cameron	58	Frio	1	Kerr	19	Parker	25	Victoria	18
Camp	2	Gaines	1	Kimble	0	Parmer	0	Walker	18
Carson	2	Galveston	106	King	0	Pecos	2	Waller	6
Cass	6	Garza	2	Kinney	0	Polk	9	Ward	8
Castro	1	Gillespie	15	Kleberg	3	Potter	59	Washington	15
Chambers	1	Glasscock	0	Knox	0	Presidio	0	Webb	24
Cherokee	14	Goliad	1	La Salle	1	Rains	0	Wharton	10
Childress	1	Gonzales	7	Lamar	12	Randall	3	Wheeler	0
Clay	2	Gray	4	Lamb	1	Reagan	1	Wichita	18
Cochran	0	Grayson	17	Lampasas	15	Real	2	Wilbarger	7
Coke	1	Gregg	125	Lavaca	3	Red River	2	Willacy	5
Coleman	3	Grimes	2	Lee	4	Reeves	2	Williamson	110
Collin	304	Guadalupe	21	Leon	3	Refugio	4	Wilson	4
Collingsworth	0	Hale	8	Liberty	19	Roberts	0	Winkler	0
Colorado	3	Hall	0	Limestone	29	Robertson	3	Wise	2
Comal	21	Hamilton	2	Lipscomb	0	Rockwall	42	Wood	8
Caomanche	5	Hansford	0	Live Oak	1	Runnels	2	Yoakum	0
Concho	1	Hardeman	5	Llano	3	Rusk	19	Young	4

Cooke	10	Hardin	12	Loving	0	Sabine	3	Zapata	1
Coryell	38	Harris	1,505	Lubbock	29	San Augustine	0	Zavala	1
Cottle	1	Harrison	25	Lynn	0	San Jacinto	2	Total	9,811
Source: ICUT (1997).									

Source: ICUT (1997)

 [Back to Table of Contents](#)

Next: Enrollment by State 



Trends for 1991-1997.

Enrollment by State

Alabama	38
Alaska	23
Arizona	87
Arkansas	157
California	286
Colorado	145
Connecticut	7
Delaware	2
District of Columbia	0
Florida	98
Georgia	64
Hawaii	27
Idaho	7
Illinois	82
Indiana	18
Iowa	29

Kansas	111
Kentucky	16
Louisiana	163
Maine	7
Maryland	32
Massachusetts	18
Michigan	23
Minnesota	25
Mississippi	49
Missouri	148
Montana	5
Nebraska	17
Nevada	10
New Hampshire	10
New Jersey	31
New Mexico	84
New York	51
North Carolina	40
North Dakota	4
Ohio	26
Oklahoma	254
Oregon	23
Pennsylvania	24
Rhode Island	4
South Carolina	12
South Dakota	5
Tennessee	99
Texas	9579
Utah	8
Vermont	5
Virginia	76
Washington	28

West Virginia	3
Wisconsin	9
Wyoming	12

Source: ICUT (1997)



[Back to Table of Contents](#)

Next: Countries Represented by Nonresident Aliens





Trends for 1991-1997.

Countries Represented by Nonresident Aliens

Fall	1991	1992	1993	1994	1995	1996	1997	Fall	1991	1992	1993	1994	1995	1996	1997
Albania	-	-	-	-	-	1	-	Korea, Republic of	1	8	7	13	14	18	-
Argentina	3	1	2	2	1	1	-	Lebanon	4	2	2	1	1	1	-
Australia	-	-	1	2	3	7	5	Macao	-	-	-	-	1	1	-
Austria	1	1	1	-	-	-	-	Malaysia	1	1	2	3	2	-	1
Bangladesh	2	1	1	-	-	2	3	Mauritius	1	1	-	-	-	-	1
Barbados	1	1	1	-	-	-	-	Mexico	7	8	15	19	15	18	15
Belgium	-	1	-	-	-	-	2	Moldova	-	-	-	-	1	-	-
Belize	-	-	-	-	1	1	3	Morocco	-	-	-	1	-	-	-
Bolivia	1	1	1	-	-	-	1	Netherlands	3	4	3	3	2	3	1
Brazil	4	5	7	5	1	1	2	New Zealand	-	-	-	-	-	1	1
British Virgin Islands	-	-	-	-	-	1	1	Nigeria	7	6	5	5	3	3	4
Bulgaria	1	5	4	6	4	5	7	Norway	4	7	11	8	8	5	5
Byelarus	-	-	-	1	1	-	-	Pakistan	1	1	1	1	2	5	1
Canada	6	8	6	8	13	11	12	Panama	5	6	6	7	4	5	5
Cayman Islands	-	2	3	1	-	1	2	Paraguay	-	-	1	1	-	-	-
Chile	2	1	3	5	3	2	2	Philippines	3	3	2	1	-	-	-
China, People's Rep.	42	57	49	43	41	49	56	Poland	1	-	-	2	4	4	4

Countries Represented by Nonresident Aliens

Columbia	3	4	4	5	9	6	7	Romania	-	-	-	-	2	2	5
Costa Rica	4	4	4	4	2	2	3	Russia	-	4	5	4	2	6	3
Cyprus	-	-	-	1	-	-	-	Rwanda	-	-	-	1	1	1	-
Czech Republic	-	-	-	1	2	3	3	Saudi Arabia	-	-	-	-	1	-	-
Denmark	2	1	1	-	-	-	-	Singapore	5	6	4	5	3	1	2
Ecuador	1	1	1	-	-	-	-	Slovakia	-	-	1	1	1	1	1
El Salvador	1	1	1	2	-	1	1	South Africa	3	1	1	3	1	2	3
Eritrea	-	-	-	-	-	1	1	South Korea	-	-	-	-	-	-	33
Estonia	-	1	1	1	1	-	1	Soviet Union	1	-	-	-	-	-	-
Ethiopia	4	4	3	3	-	1	-	Spain	2	3	3	4	5	4	3
Finland	-	1	1	-	1	1	2	Sri Lanka	2	3	4	4	2	2	5
France	6	2	3	12	6	6	4	Sudan	1	1	1	1	1	1	-
Germany	6	5	4	4	4	-	4	Sweden	3	1	-	1	4	4	3
Ghana	3	2	3	-	2	1	1	Switzerland	-	2	2	-	-	1	4
Greece	4	4	3	2	2	-	-	Taiwan	14	21	27	19	16	18	31
Guatemala	2	2	1	1	2	1	-	Tanzania	-	1	1	1	-	-	-
Guyana	1	-	-	-	-	-	-	Thailand	4	6	4	6	6	7	8
Honduras	5	4	4	4	4	6	7	Togo	-	-	-	-	-	1	1
Hong Kong*	8	16	17	14	14	11	-	Trinidad/Tobago	-	1	1	2	2	1	1
Hungary	-	-	-	-	-	-	2	Turkey	-	-	1	1	1	-	-
India	9	20	23	23	15	20	17	Uganda	1	1	1	1	1	1	-
Indonesia	10	8	6	4	4	10	9	Ukraine	-	1	1	1	2	2	1
Iran	1	1	1	-	-	-	-	United Arab Emirates	1	1	1	1	2	1	-
Ireland	-	-	-	-	-	1	-	United Kingdom	3	9	6	5	8	11	7
Israel	1	1	1	-	-	-	-	Uzbekistan	-	-	-	2	3	2	-
Italy	1	1	2	1	2	1	1	Venezuela	2	2	4	5	5	3	4
Jamaica	1	1	2	1	1	-	1	West Indies Fed.	1	-	-	-	-	-	-
Japan	9	12	14	14	16	14	11	Yemen	1	1	-	-	-	-	-
Jordan	2	-	-	-	2	-	-	Yugoslavia	-	-	-	-	-	1	1
Kazakhstan	-	1	-	-	-	2	2	Zambia	-	-	-	-	1	1	1
Kenya	-	1	1	3	4	4	3	Zimbabwe	-	-	-	-	2	1	1
*Beginning Fall 1997, Hong Kong counted in People's Republic of China.								Total	229	294	303	306	290	313	332

Source: IMTS (1991) , international Programs Report (1992-1997)



[Back to Table of Contents](#)

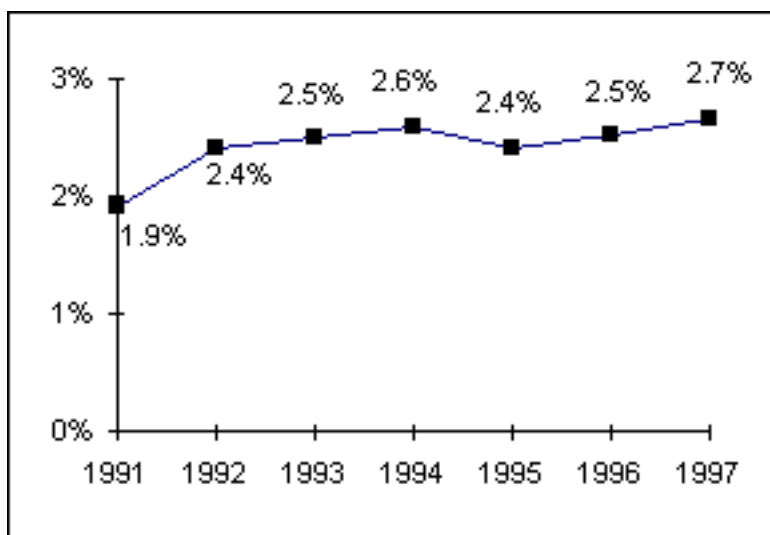
Next: Percentage of Nonresident Aliens





Trends for 1991-1997.

Percentage of Nonresident Aliens



Source: IMTS (1991), International Programs Report (1992-1997)



[Back to Table of Contents](#)

Next: Enrollment by Unit





Trends for 1991-1997.

Enrollment by Unit

	Fall	1991	1992	1993	1994	1995	1996	1997
College of Arts & Sciences		7,820	8,257	6,575	6,433	5,891	5,862	5,718
School of Business		2,081	2,007	2,767	2,798	2,785	2,950	3,059
School of Education		737	717	1,550	1,524	1,574	1,604	1,672
School of Engineering & Computer Sci.		-	-	-	-	315	348	370
School of Music		268	292	315	337	343	361	365
School of Nursing		187	185	241	444	459	448	426
Institutes & Special Studies		149	176	199	107	133	130	164
Graduate School		-	-	-	-	64	32	48
School of Law		440	422	407	396	394	398	396
Truett Seminary		-	-	-	51	76	123	130
College of Dentistry		31	37	34	41	44	-	-
Academy of Health Sciences		97	92	106	109	124	135	124
TOTAL		11,810	12,185	12,194	12,240	12,202	12,391	12,472

Notes:

1. Classification of pre business majors was modified in Fall 1988, providing for two categories of students: Pre Business (in Business) and Pre Business (in Arts and Sciences). Prior to this time all Pre Business majors were counted in the College of Arts and Sciences. In Fall 1993, the Pre Business (in Arts & Sciences) category was discontinued, and all Pre Business students are now counted in the School of Business.
2. In the Fall of 1989 the University School was identified as a unit. In Fall 1992, the University School was abolished. The programs previously housed in the University School (with the exception of Environmental Studies, Gerontology, and Museum Studies) are now housed in "Institutes and Special Studies."
3. Prior to Fall 1993, pre education students were counted in the College of Arts and Sciences. They are now counted in the School of Education.
4. Prior to Fall 1994, Pre Nursing students were counted in the College of Arts and Sciences. They are now counted in the School of Nursing.
5. The School of Engineering & Computer Science was formed in 1995.
6. Beginning in 1995, the enrollment for the Graduate School reflects students classified as "No Major."
7. Programs housed in the College of Dentistry were transferred to Texas A&M University in Fall 1996.

Source: IMTS (1991-1997)



[Back to Table of Contents](#)

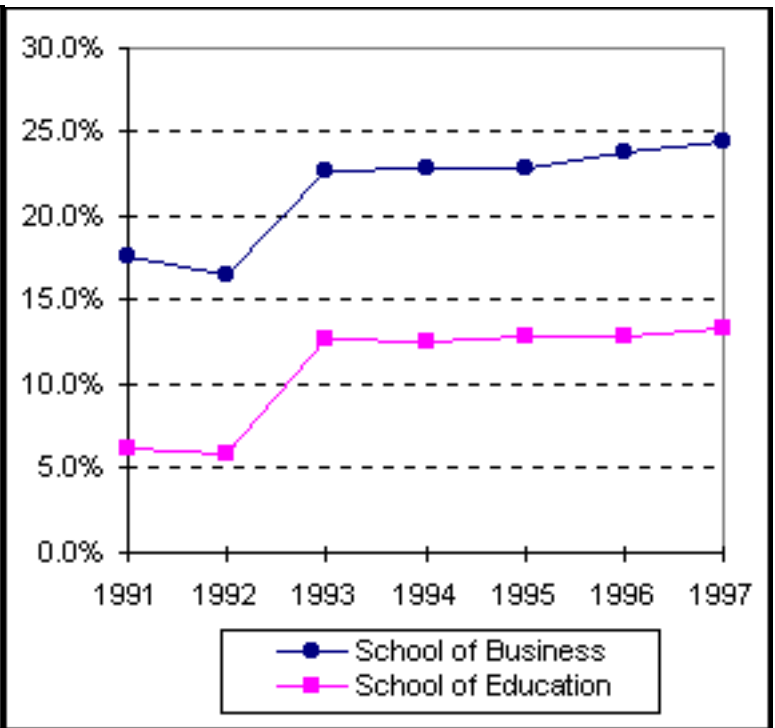
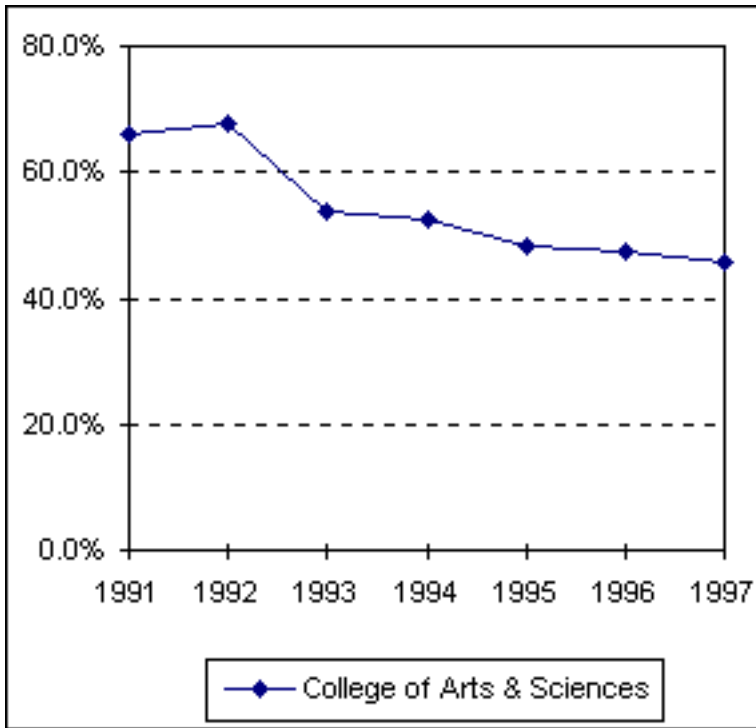
Next: Enrollment Percentage by Unit

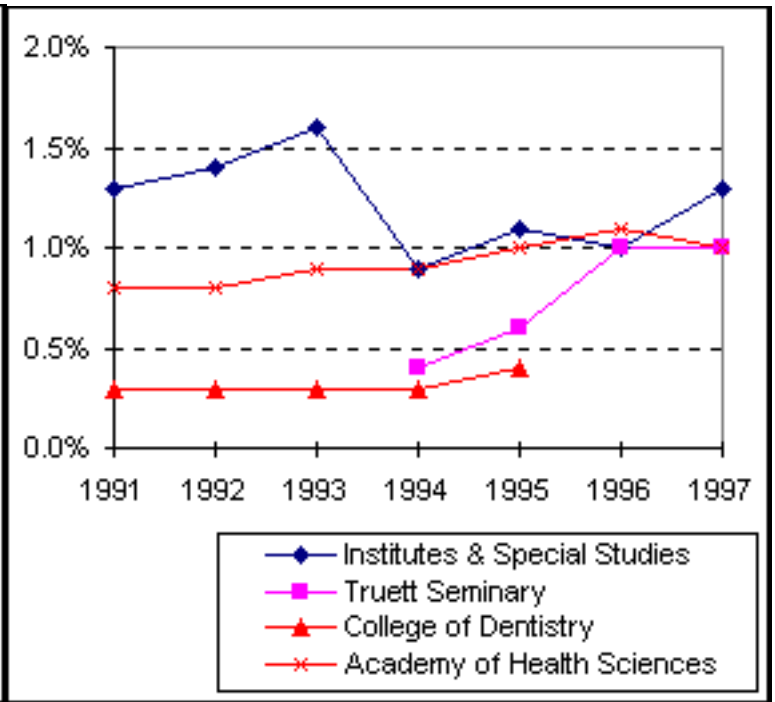
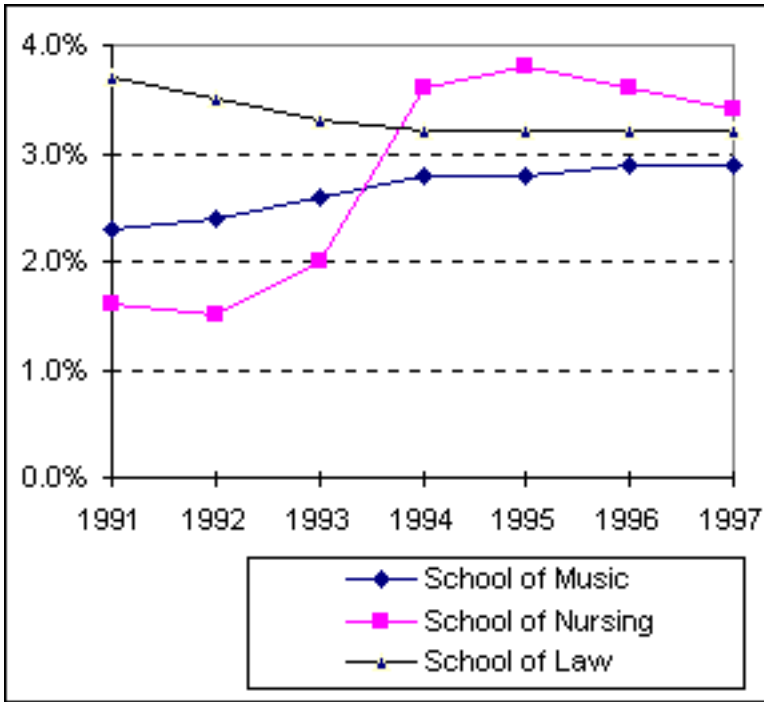




Trends for 1991-1997.

Enrollment Percentage by Unit





	Fall	1991	1992	1993	1994	1995	1996	1997
College of Arts & Sciences		66.2%	67.8%	53.9%	52.6%	48.3%	47.3%	45.8%
School of Business		17.6%	16.5%	22.7%	22.9%	22.8%	23.8%	24.5%
School of Education		6.2%	5.9%	12.7%	12.5%	12.9%	12.9%	13.4%
School of Engineering & Computer Sci.						2.6%	2.8%	3.0%
School of Music		2.3%	2.4%	2.6%	2.8%	2.8%	2.9%	2.9%
School of Nursing		1.6%	1.5%	2.0%	3.6%	3.8%	3.6%	3.4%
Institutes & Special Studies		1.3%	1.4%	1.6%	0.9%	1.1%	1.0%	1.3%
Graduate School						0.5%	0.3%	0.4%
School of Law		3.7%	3.5%	3.3%	3.2%	3.2%	3.2%	3.2%
Truett Seminary					0.4%	0.6%	1.0%	1.0%
College of Dentistry		0.3%	0.3%	0.3%	0.3%	0.4%		
Academy of Health Sciences		0.8%	0.8%	0.9%	0.9%	1.0%	1.1%	1.0%

Source: IMTS (1991-1997)



[Back to Table of Contents](#)

Next: [Student Credit Hours by Unit, Waco Campus](#)

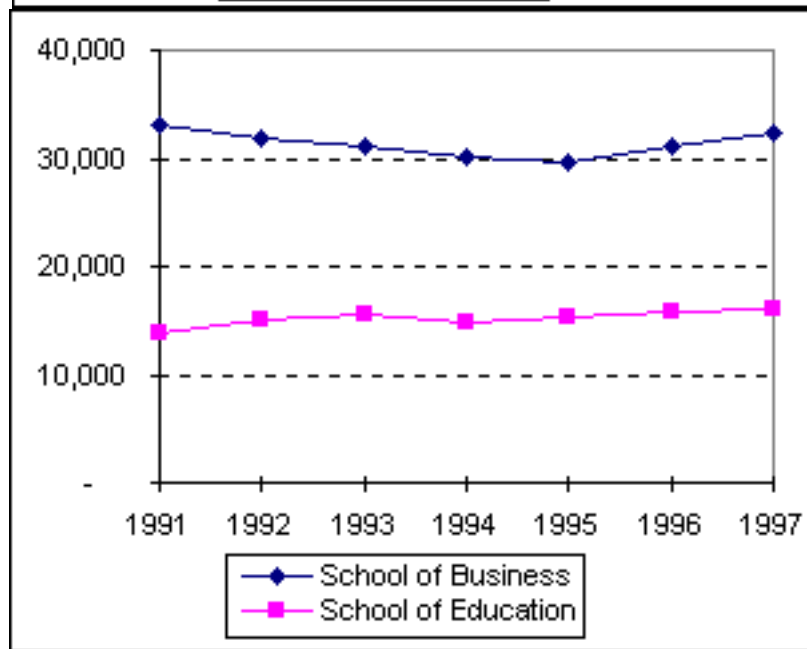
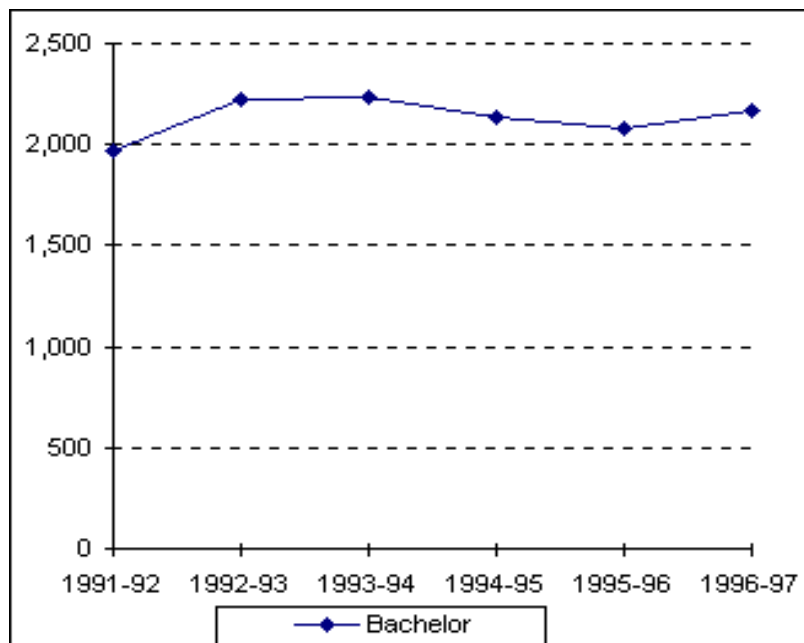


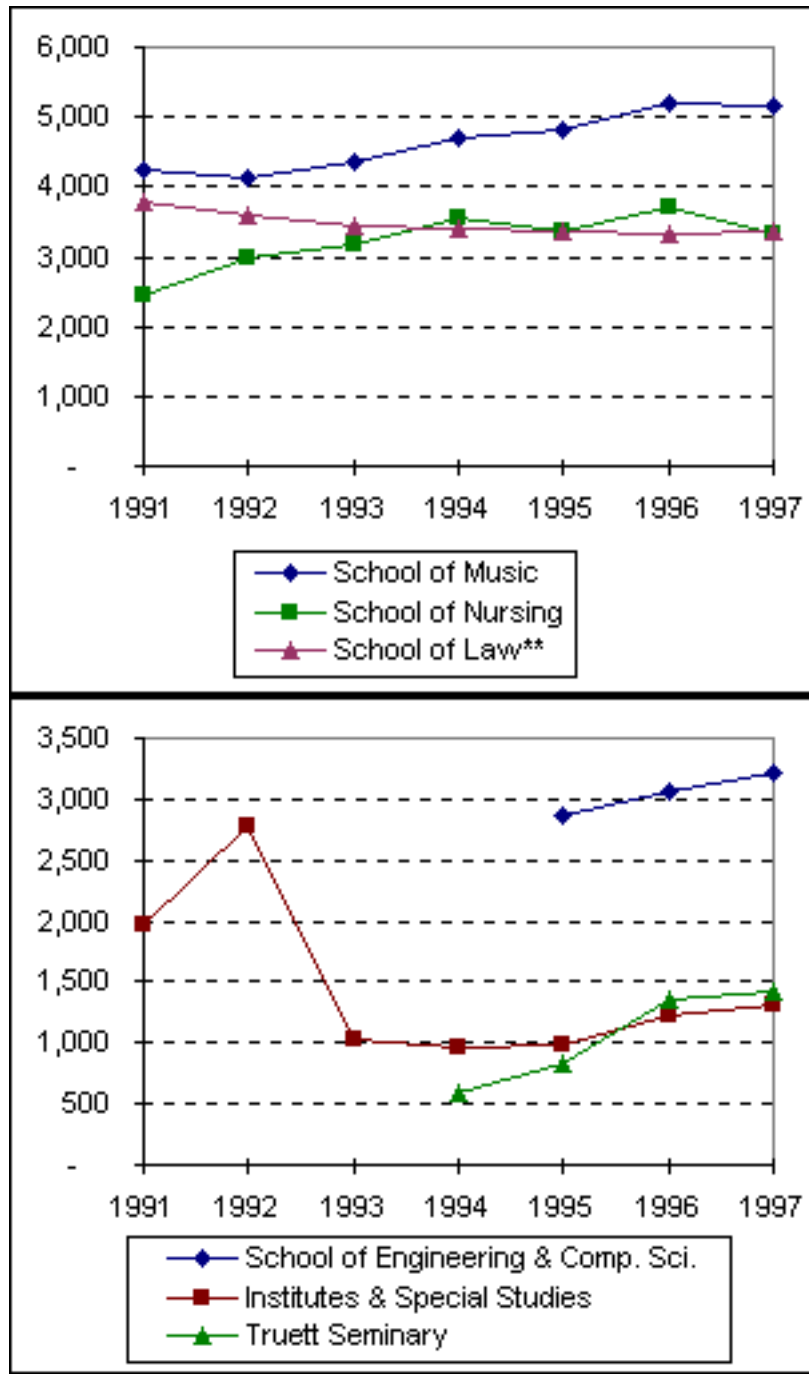


Trends for 1991-1997.

Student Credit Hours by Unit, Waco Campus

Fall	1991	1992	1993	1994	1995	1996	1997
College of Arts & Sciences	98,263	100,586	101,633	100,562	96,348	97,393	97,007
School of Business	33,202	31,795	31,189	30,244	29,697	31,037	32,418
School of Education	13,813	15,110	15,609	14,897	15,243	15,793	15,934
School of Engineering & Comp. Sci.					2,870	3,067	3,218
School of Music	4,231	4,112	4,358	4,714	4,818	5,197	5,147
School of Nursing	2,459	2,999	3,173	3,539	3,381	3,693	3,337
Institutes & Special Studies	1,961	2,786	1,035	961	989	1,217	1,316
School of Law **	3,796	3,575	3,426	3,397	3,356	3,330	3,353
Truett Seminary				593	841	1,351	1,420
TOTAL	157,725	160,963	160,423	158,907	157,543	162,078	163,150





Source: IMTS (1991-1997)



[Back to Table of Contents](#)

Next: Retention of First - Time Freshman Classes





Trends for 1991-1997.

Retention of First - Time Freshman Classes

First-Time																
Freshman	After 1 year		After 2 years		After 3 years			After 4 years			After 5 years			After 6 years		
Class of:	Cont.	Drop.	Cont.	Drop.	Cont.	Drop.	Grad.	Cont.	Drop.	Grad.	Cont.	Drop.	Grad.	Cont.	Drop.	Grad.
1987	85.0%	15.0%	75.6%	24.4%	71.7%	27.1%	1.2%	24.2%	28.2%	47.6%	3.4%	28.3%	68.3%	1.1%	28.2%	70.7%
1988	84.0%	16.0%	75.5%	24.5%	72.5%	26.5%	1.0%	29.8%	28.3%	41.9%	3.3%	28.5%	68.2%	0.8%	27.9%	71.3%
1989	85.7%	14.3%	74.8%	25.2%	71.2%	27.7%	1.1%	28.3%	28.9%	42.8%	3.9%	28.9%	67.2%	1.2%	28.8%	70.0%
1990	84.1%	15.9%	73.0%	27.0%	69.8%	29.0%	1.2%	28.1%	29.6%	42.3%	4.2%	31.2%	64.6%	1.6%	29.4%	69.0%
1991	84.0%	16.0%	74.5%	25.5%	70.7%	28.2%	1.1%	26.5%	29.6%	43.9%	3.8%	29.5%	66.7%	1.3%	29.0%	69.7%
1992	81.9%	18.1%	71.5%	28.5%	67.2%	31.5%	1.4%	28.3%	32.4%	39.3%	4.8%	32.0%	63.2%			
1993	81.6%	18.4%	72.0%	28.0%	68.4%	30.4%	1.2%	27.5%	32.3%	40.2%						
1994	82.2%	17.8%	72.3%	27.7%	68.5%	30.1%	1.4%									
1995	82.9%	17.1%	76.0%	24.0%												
1996	83.4%	16.6%														
Average	83.5%	16.5%	73.9%	26.1%	70.0%	28.8%	1.2%	27.5%	29.9%	42.6%	3.9%	29.7%	66.4%	1.2%	28.7%	70.1%

Source: IMTS (1987 - 1997)



[Back to Table of Contents](#)

Next: Distribution of Degrees





Trends for 1991-1997.

Distribution of Degrees

	1991-92	1992-93	1993-94	1994-95	1995-96	1996-97
Bachelor of:						
Arts	897	1041	1044	1021	975	927
Business Administration	893	770	800	708	679	816
Fine Arts	23	23	17	31	18	22
Music	18	20	34	18	18	24
Music Education	15	19	13	18	18	20
Bachelor of Science:						
Science	138	144	120	128	105	141
Aviation Sciences				2	6	4
Computer Science					18	16
Education	187	327	369	316	330	382
Engineering	14	29	18	30	29	21
Engineering Science			1			
Family & Consumer Sciences	34	58	54	47	51	51
Nursing	60	100	90	123	112	102
TOTAL BACHELOR DEGREES	2,279	2,531	2,560	2,442	2,359	2,526

Master of:						
Arts	60	62	89	85	75	87
Business Administration	94	149	100	137	108	117
Business Admin. in International Management	6	1	5	4	1	5
Christian Theology					1	1
Clinical Gerontology	3	7	9	10	3	4
Divinity						33
Environmental Studies	5	4	4	3	3	6
Fine Arts			1	1	1	2
Health Administration	54	52	30	46	43	51
International Journalism	12	9	18	7	1	1
International Management	2	5	9	7	4	2
Music	19	10	25	28	21	26
Physical Therapy	23	20	21	24	23	24
Public Policy and Administration	4	4	10	7	10	1
Taxation	10	20	10	16	15	9
Master of Science:						
Science	38	32	44	46	43	47
Clinical Psychology						20
Communication Sciences & Disorders	20	27	29	25	28	33
Dentistry	12	13	25	10		
Economics	4	4	6	0	3	3
Education	72	75	91	74	68	65
Gerontology	6	7	7	13	9	9
Limnology				1		3
Nursing	0	1	3	1	1	1
TOTAL MASTER'S DEGREES	444	502	536	545	461	550
TOTAL JURIS DOCTOR DEGREES	162	175	150	157	143	168
Doctor of:						
Education	11	13	18	12	22	15
Philosophy	15	15	19	25	19	19
Psychology	9	7	11	10	10	6
TOTAL DOCTORAL DEGREES	35	35	48	47	51	40
TOTAL DEGREES AWARDED	2,920	3,243	3,294	3,191	3,014	3,284

* Degree information on this page is reported beginning with the Fall semester and including the

following Spring and Summer terms. An individual graduate with multiple majors is counted as a whole graduate in each major area of study (i.e., duplicated count).

Source: Report of the Register (1991 - 1997)



[Back to Table of Contents](#)

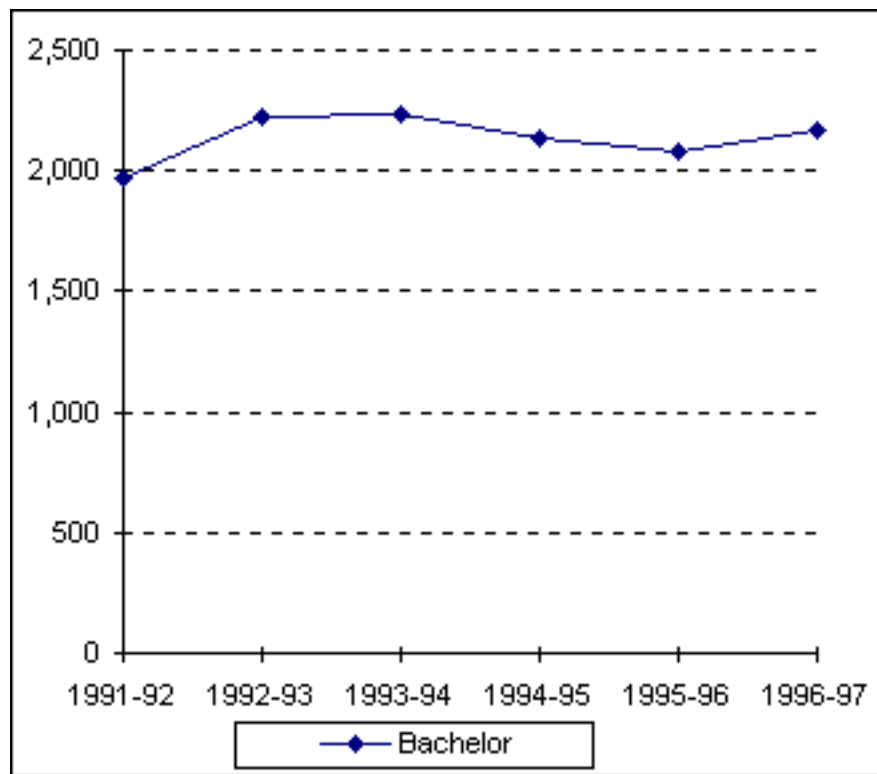
Next: Summary of Degrees Awarded

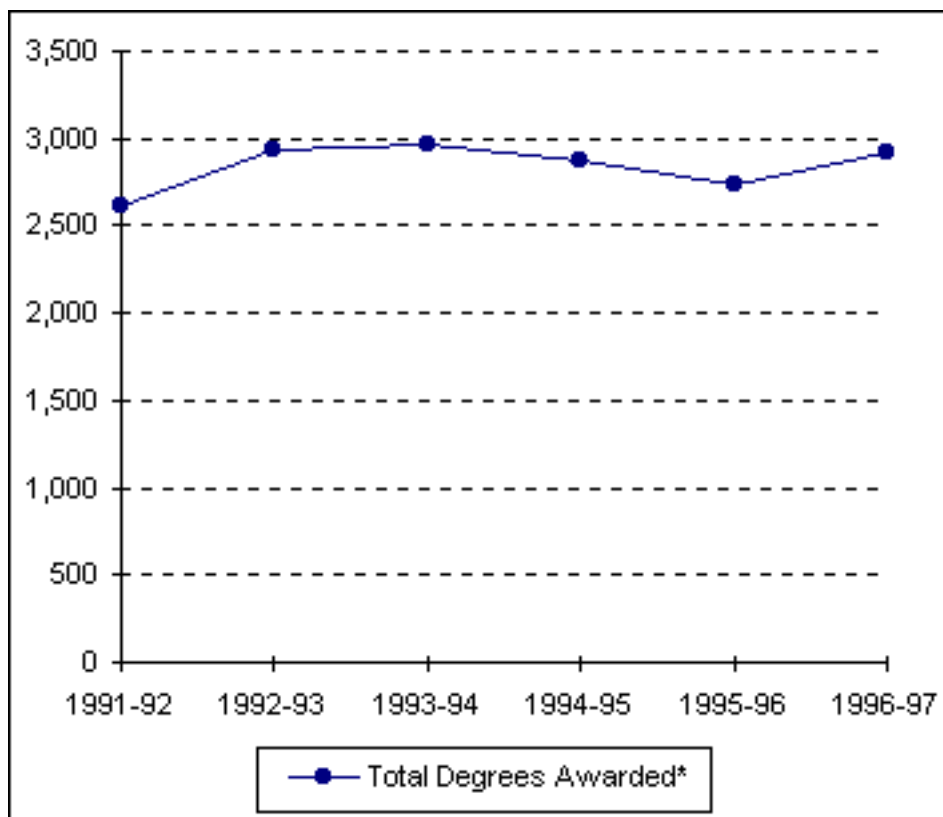
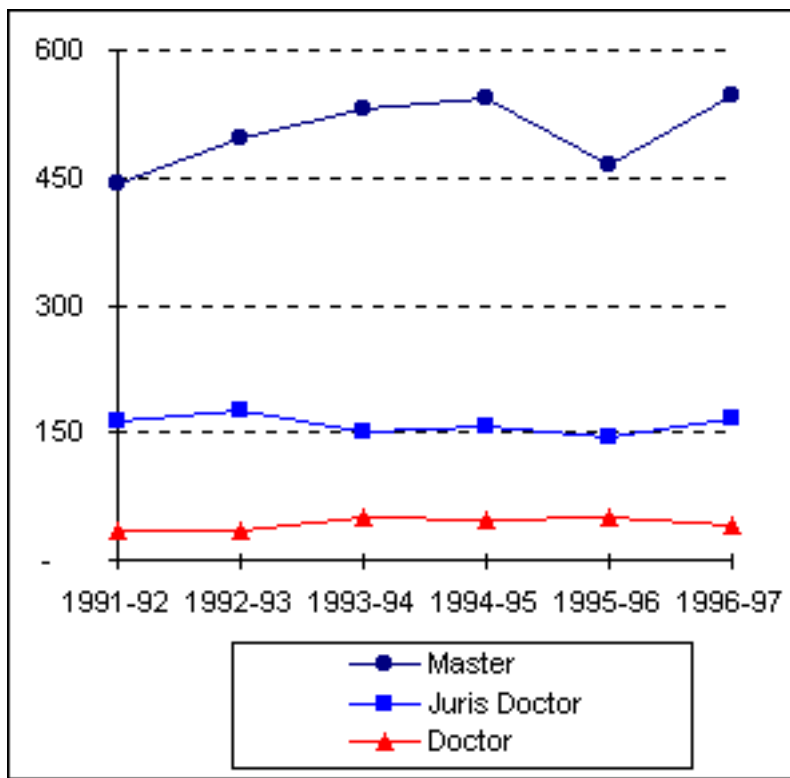




Trends for 1991-1997.

Summary of Degrees Awarded





Degree Level:	1991-92	1992-93	1993-94	1994-95	1995-96	1996-97
Bachelor	1,966	2,228	2,229	2,132	2,075	2,170
Master	444	495	531	544	465	548
Juris Doctor	162	175	150	157	143	168

Doctor	35	35	51	47	51	40
Total Degrees Awarded*	2,607	2,933	2,961	2,880	2,734	2,926

Source: Report of the Registrar (1991- 1997)



[Back to Table of Contents](#)

Next: Degree Programs





Trends for 1991-1997.

Degree Programs

Degree Programs		
(as of January 1998)		
Accounting (BBA)	Communication Disorders (MA)	Environmental Studies (BA)
Accounting (MAcc)	Communication Sci. & Disorders (MSCSD)	Environmental Studies (BS)
Administrative Information Systems (BBA)	Communication Sciences & Disorders (BA)	Environmental Studies (MES)
American Studies (BA)	Communication Specialist (BA)	Environmental Studies (MS)
American Studies (MA)	Communication Studies (MA)	Family Nurse Practitioners (MSN)
Anthropology (BA)	Composition (BM)	Fashion Design (BA)
Anthropology (MAA)	Composition (MM)	Fashion Design (BSFCS)
Applied Mathematics (BS)	Computer Information Systems (BBA)	Fashion Merchandising (BA)
Applied Music (BM)	Computer Information Systems-CIS (BSEd)	Fashion Merchandising (BSFCS)
Applied Sociology (PhD)	Computer Information Systems-ISY (BSEd)	Finance (BBA)

Archaeology (BA)	Computer Science (BA)	Financial Services / Planning (BBA)
Architecture (BA)	Computer Science (BSCS)	Forestry (BA)
Art (BFA)	Computer Science (MS)	Forestry (BS)
Art (BSEd)	Conducting (MM)	French (BA)
Art History (BA)	Curriculum & Instruction (EdD)	French (BSEd)
Asian Studies (BA)	Curriculum & Instruction (EdS)	General Family & Consumer Sci. (BSFCS)
Aviation Sciences (BSAvSc)	Curriculum & Instruction (MA)	General Family & Consumer Sciences (BA)
Basic Business (BBA)	Curriculum & Instruction (MSEd)	General Studies in HHPR (BSEd)
Biblical & Related Languages (BA)	Dentistry (BA)	Generic Special Education (BSEd)
Biochemistry (BA)	Dentistry (BS)	Geology (BS)
Biochemistry (BS)	Design (BFA)	Geology (MS)
Biology (BA)	Dietetics (BA)	Geology (PhD)
Biology (BS)	Dietetics (BS)	Geophysics (BS)
Biology (BSEd)	Dietetics (BSFCS)	German (BA)
Biology (MA)	Directing (MFA)	German (BSEd)
Biology (MS)	Earth Science (BA)	Gerontology (MSG)
Biology (PhD)	Earth Science (BSEd)	Graduate - Nondegree
Biomedical Studies (MS)	Earth Science (MA)	Greek (BA)
Biomedical Studies (PhD)	Economics (BA)	Health (BSEd)
Business Administration (BA)	Economics (BBA)	Health Care Administration (MHA)
Business Administration (BSEd)	Economics (BS)	Health / Fitness Studies (BSEd)
Business Administration (MBA)	Economics (BSEd)	Health, Human Performance & Recreation (MSEd)
Business - Broadcasting (BBA)	Economics (MA)	Health Science Studies (BSEd)
Business - Journalism (BBA)	Economics (MSEco)	History (BA)
Chemistry (BA)	Education (MA)	History (BSEd)
Chemistry (BS)	Educational Administration (EdD)	History (MA)
Chemistry (BSEd)	Educational Administration (EdS)	Human Performance (BSEd)
Chemistry (MS)	Educational Administration (MA)	Human Resources Management (BBA)

Chemistry (PhD)	Educational Administration (MSEd)	Information Systems Management (MBA)
Child & Family Studies (BA)	Educational Psychology (EdS)	Information Systems (MSIS)
Child & Family Studies (BSFCS)	Educational Psychology (MA)	Instrumental Music (BME)
Choral Music (BME)	Educational Psychology (MSEd)	Insurance (BBA)
Christian Theology (MCT)	Educational Psychology (PhD)	Interdisciplinary Studies (BSEd)
Church Music (BM)	Engineering (BSE)	Interior Design (BA)
Church Music (MM)	English (BA)	Interior Design (BSFCS)
Church Recreation (BSEd)	English (BSEd)	International Business (BBA)
Church-State Studies (MA)	English (MA)	International Economics (MA)
Church-State Studies (PhD)	English (PhD)	International Economics (MIE)
Classics (BA)	Entrepreneurship (BBA)	International Economics (MS)
Clinical Gerontology (MCG)	Environmental Biology (MS)	International Journalism (MIJ)
Clinical Psychology (MSCP)	Environmental Chemistry (MS)	International Management (MBAIM)
Clinical Psychology (PsyD)	Environmental Economics (MS)	International Management (MIM)
International Relations (MA)	Physics (BA)	
International Studies (BA)	Physics (BS)	
Journalism (BA)	Physics (BSEd)	
Journalism (BSEd)	Physics (MA)	
Journalism (MA)	Physics (MS)	
Latin American Studies (BA)	Physics (PhD)	
Latin (BA)	Piano Pedagogy & Performance (MM)	
Latin (BSEd)	Political Science (BA)	
Law (BA)	Political Science (BSEd)	
Law (BBA)	Political Science (MA)	
Law (JD)	Professional Writing (BA)	
Life - Earth Science (BSEd)	Psychology (BA)	
Limnology (MSL)	Psychology (BS)	
Management (BBA)	Public Administration (BBA)	

Marketing (BBA)	Public Policy & Administration (MPPA)	
Mathematics (BA)	Quantitative Business Analysis (BBA)	
Mathematics (BS)	Reading (BSEd)	
Mathematics (BSEd)	Real Estate (BBA)	
Mathematics (MA)	Recreation (BSEd)	
Mathematics (MS)	Regional / Urban Studies (BBA)	
Medical Technology & Biology (BS)	Religion (BA)	
Medicine (BA)	Religion (MA)	
Medicine (BS)	Religion (PhD)	
Museum Studies (BA)	Russian (BA)	
Museum Studies (BS)	Science (BSEd)	
Museum Studies (MA)	Slavic and East European Studies (BA)	
Music (BA)	Social Studies (BSEd)	
Music Education (MM)	Social Work (BA)	
Music History & Literature (BM)	Sociology (BA)	
Music History & Literature (MM)	Sociology (BSEd)	
Music Theory (MM)	Sociology (MA)	
Neuroscience (BS)	Spanish (BA)	
Neuroscience (MA)	Spanish (BSEd)	
Neuroscience (PhD)	Spanish (MA)	
Nondegree - Arts & Sciences	Speech Communication (BA)	
Nondegree - Business	Speech Communications (BSEd)	
Nondegree - Education	Speech & Language Therapy (BSEd)	
Nondegree - Music	Statistics (MA)	
Nondegree - Nursing	Statistics (PhD)	
Nursing (BSN)	String Pedagogy & Performance (MM)	
Operations Management (BBA)	Studio Art (BA)	
Optometry (BA)	Studio Art (BFA)	
Optometry (BS)	Taxation (MT)	

Patient Care Management (MSN)	Telecommunication (BA)	
Pedagogy (BM)	Theater Arts (BA)	
Performance (BFA)	Theater Arts (BSEd)	
Performance (MM)	Theater Arts (MA)	
Philosophy (BA)	Theology (MDiv)	
Philosophy (MA)	Theory (BM)	
Physical Science (BSEd)	University Scholars (BA)	
Physical Therapy (MPT)		
Source: IMTS		

Source: IMTS



[Back to Table of Contents](#)

Next: Full - Time Faculty Positions





Trends for 1991-1997.

Full - Time Faculty Positions

	Fall 1991		Fall 1992		Fall 1993		Fall 1994		Fall 1995		Fall 1996		Fall 1997	
Rank	Male	Female	Male	Female	Male	Female	Male	Female	Male	Female	Male	Female	Male	Female
Professors:														
Number	188	25	188	27	197	29	194	27	199	33	198	33	201	34
Tenured	178	25	179	27	189	29	187	27	190	31	190	30	194	32
Associate Prof.:														
Number	102	30	89	35	91	40	93	43	87	41	82	41	84	43
Tenured	81	24	75	25	73	30	79	34	76	32	67	34	68	37
Assistant Prof.:														
Number	57	55	59	53	53	50	59	53	68	49	71	51	67	55
Tenured	3	13	3	12	4	9	3	10	2	7	3	5	3	7
Instructors:														
Number	3	3	3	4	4	3	1	2	0	2	0	2	0	2
Tenured	0	1	0	1	0	1	0	1	0	1	0	1	0	1
Lecturers:														
Number	60	75	57	74	59	75	51	76	45	76	55	73	47	73

Total Number	410	188	396	193	404	197	398	201	399	201	406	200	399	207
Total Tenured	262	63	257	65	266	69	269	72	268	71	260	70	265	77

Source: AAUP, IMTS



[Back to Table of Contents](#)

Next: Highest Degree Earned by Full - Time Faculty





Trends for 1991-1997.

Highest Degree Earned by Full -Time Faculty

	Fall 1991	Fall 1992	Fall 1993	Fall 1994	Fall 1995	Fall 1996	Fall 1997
Baccalaureate	4	1	1	0	0	0	1
Master's	165	161	137	141	141	135	138
Doctoral	414	408	439	437	438	449	448
Professional	15	19	24	21	21	22	19
Total	598	589	601	599	600	606	606

Source: AAUP, IMTS



[Back to Table of Contents](#)

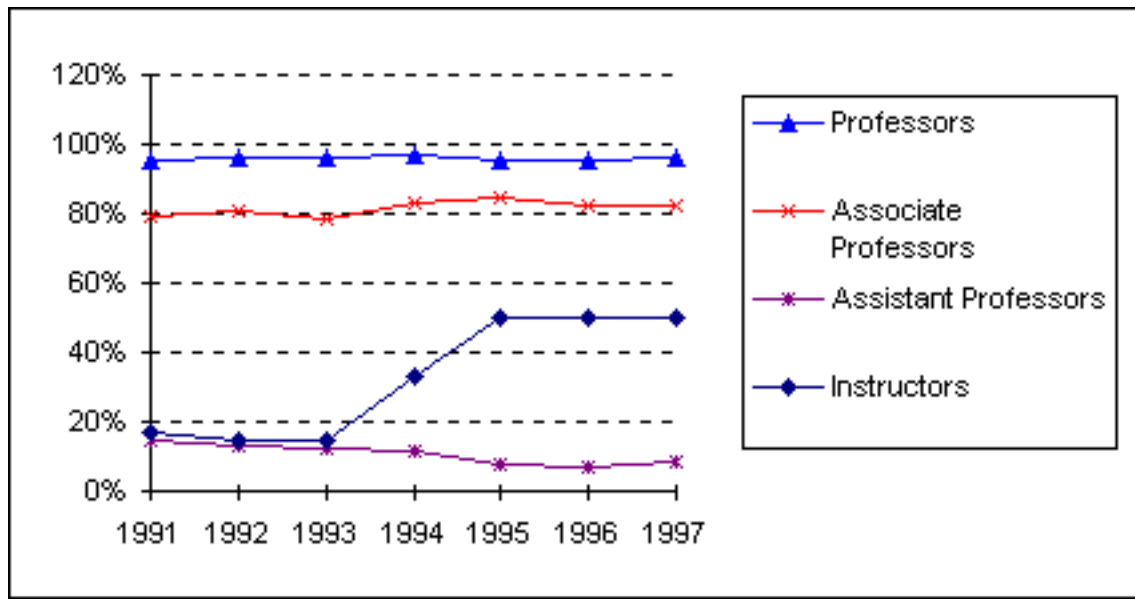
Next: Percentage of Full - Time Faculty with Tenure

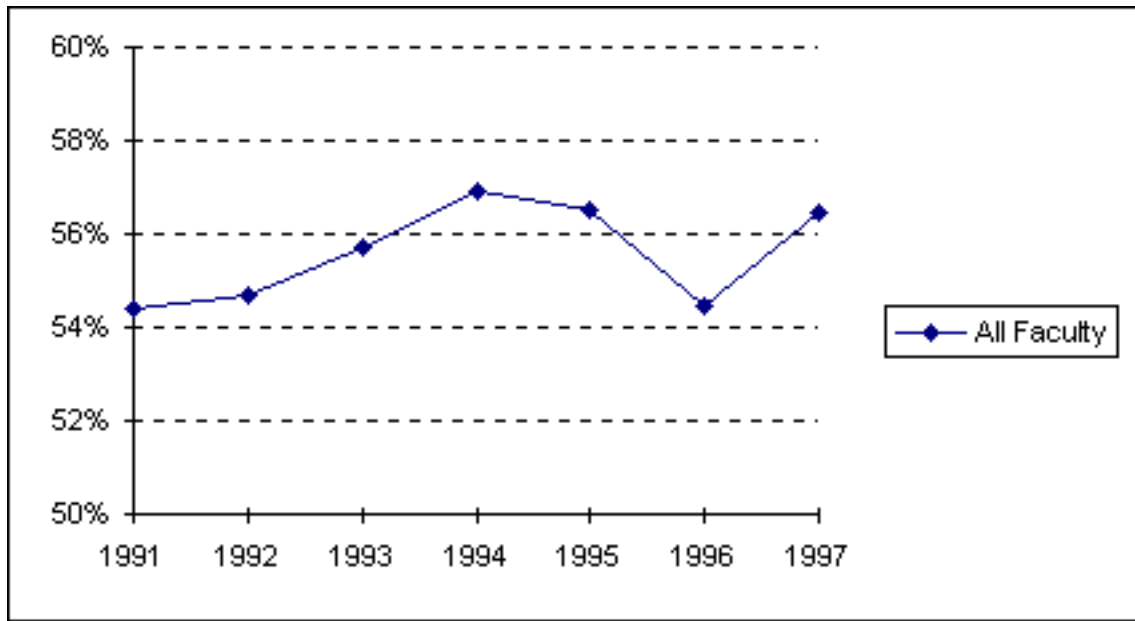




Trends for 1991-1997.

Percentage of Full - Time Faculty with Tenure





Fall	1991	1992	1993	1994	1995	1996	1997
Professors	95.3%	95.8%	96.5%	96.8%	95.3%	95.2%	96.2%
Associate Professors	79.6%	80.6%	78.6%	83.1%	84.4%	82.1%	82.7%
Assistant Professors	14.3%	13.4%	12.6%	11.6%	7.7%	6.6%	8.2%
Instructors	16.7%	14.3%	14.3%	33.3%	50.0%	50.0%	50.0%
All Faculty	54.4%	54.7%	55.7%	56.9%	56.5%	54.5%	56.4%

Source: AAUP



[Back to Table of Contents](#)

Next: Average Salaries





Trends for 1991-1997.

Average Salaries of Full - Time Instructional Faculty on Academic Year Contracts

	Fall 1991		Fall 1992		Fall 1993		Fall 1994	
	Number	Average	Number	Average	Number	Average	Number	Average
Rank	in Rank	Salary	in Rank	Salary	in Rank	Salary	in Rank	Salary
Professor	213	\$60,191	215	\$59,452	226	\$61,864	221	\$63,599
Associate Professor	132	\$45,755	124	\$45,317	131	\$47,360	136	\$49,235
Assistant Professor	112	\$39,097	112	\$38,862	103	\$39,681	112	\$40,100
Instructor	6	\$30,841	7	\$33,555	7	\$34,609	3	\$43,662
Lecturer	135	\$29,344	131	\$29,072	134	\$30,671	127	\$30,984
All Ranks	598	\$45,795	589	\$45,496	601	\$47,629	599	\$48,929
Average Fringe		\$11,902		\$11,513		\$13,118		\$13,657
Fringe as a Percentage of								
Average Salary		26.0%		25.3%		27.5%		27.9%
Percentage Increase in								

Average Salary for									
Continuing Faculty		5.9%		0.3%		5.3%			5.3%
	Fall 1995		Fall 1996		Fall 1997				
	Number	Average	Number	Average	Number	Average			
Rank	in Rank	Salary	in Rank	Salary	in Rank	Salary			
Professor	232	\$65,450	231	\$67,094	235	\$70,565			
Associate Professor	128	\$51,041	123	\$51,427	127	\$54,382			
Assistant Professor	117	\$41,448	122	\$41,259	122	\$42,459			
Instructor	2	*	2	*	2	*			
Lecturer	121	\$32,504	128	\$32,473	120	\$35,127			
All Ranks	600	\$50,958	606	\$51,292	606	\$54,386			
Average Fringe		\$13,324		\$13,503		\$14,416			
Fringe as a Percentage of									
Average Salary		26.1%		26.3%		26.5%			
Percentage Increase in									
Average Salary for									
Continuing Faculty		5.2%		3.3%		6.7%			

Sources: AAUP



[Back to Table of Contents](#)

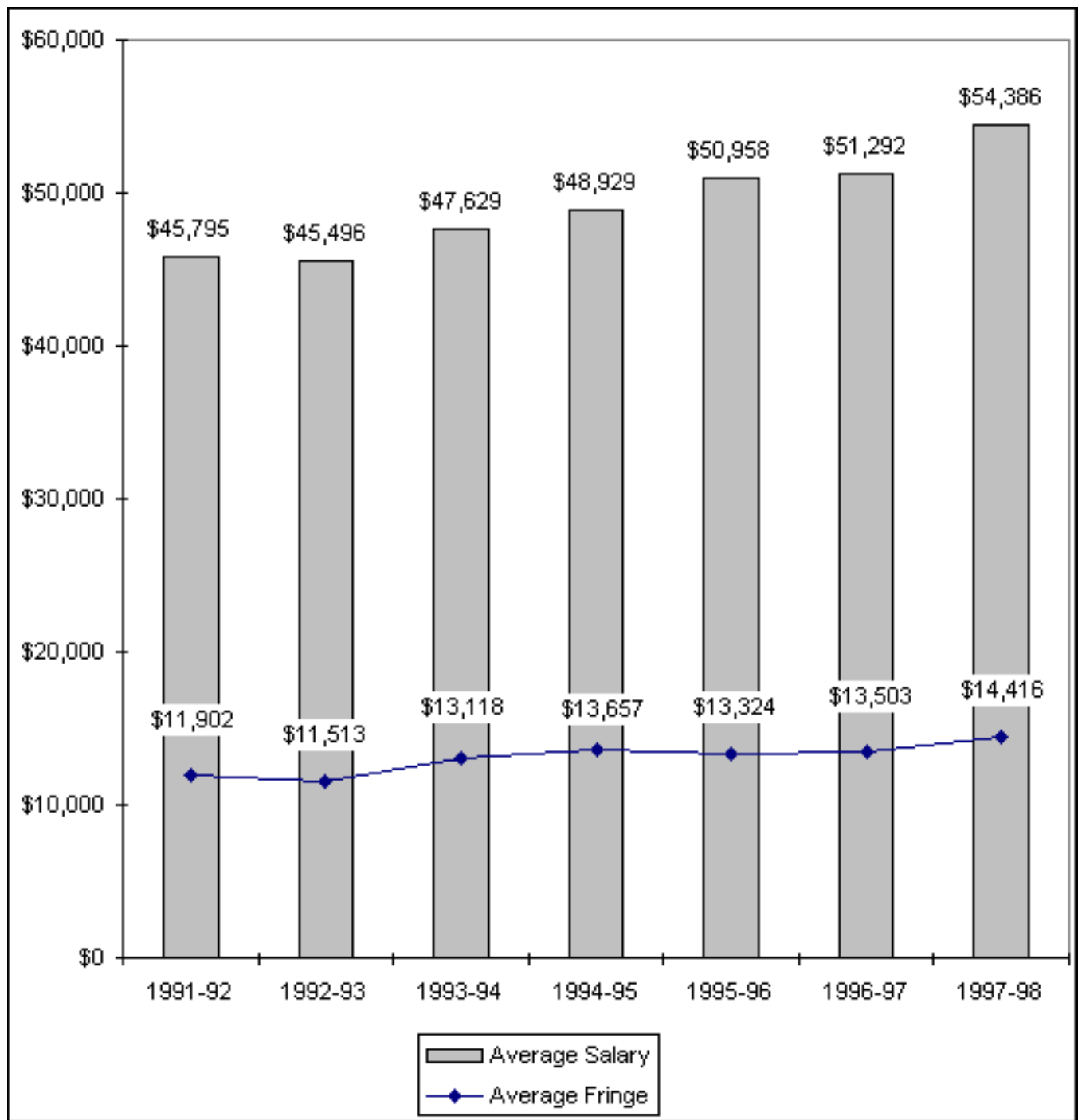
Next: Average Composition





Trends for 1991-1997.

**Average Composition of Full - Time Instructional Faculty on Academic
Year Contracts**



Sources: AAUP



[Back to IR](#)

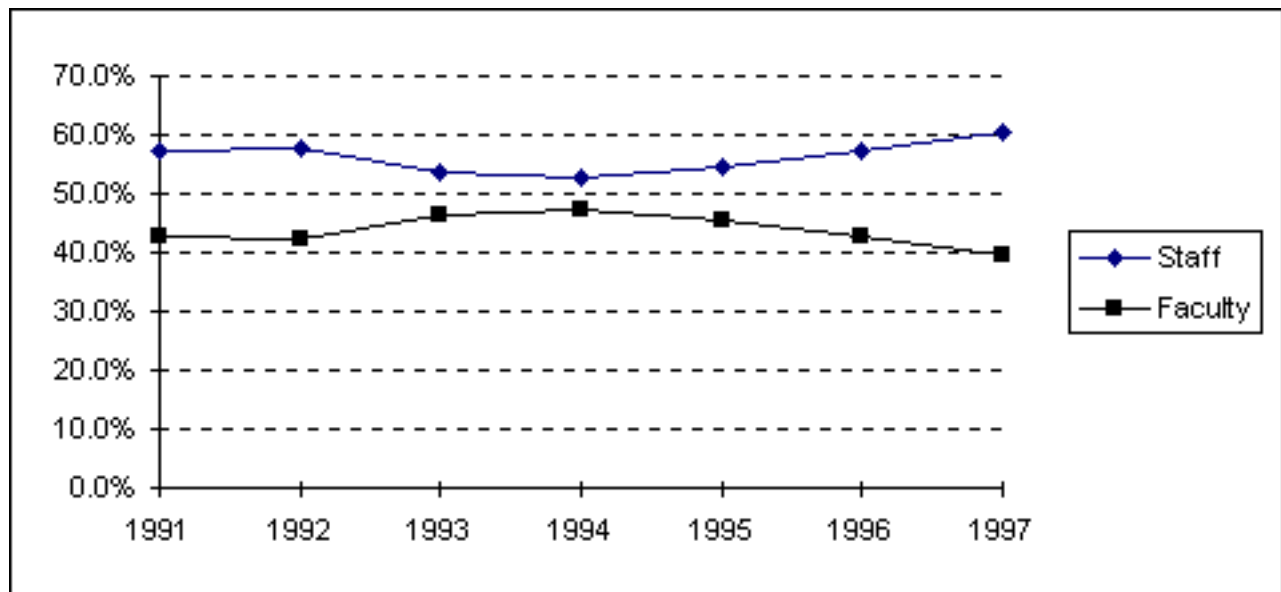
Next: Institutional Staff





Trends for 1991-1997.

Percentage of Institutional Staff



Fall	1991	1992	1993	1994	1995	1996	1997
Staff	57.2%	57.8%	53.6%	52.8%	54.4%	57.3%	60.2%
Faculty	42.8%	42.2%	46.4%	47.2%	45.6%	42.7%	39.8%

Source: ICUT



[Back to Table of Contents](#)

Next: Tuition and Other Semester Charges





Trends for 1991-1997.

Tuition and Other Semester Charges

	1991-92	1992-93	1993-94	1994-95	1995-96	1996-97	1997-98
Tuition per Semester Hour	\$185.00	\$200.00	\$215.00	\$232.00	\$258.00	\$269.00	\$288.00
Increase from Prior Year	8.8%	8.1%	7.5%	7.9%	11.2%	4.3%	7.1%
Application Fee	20.00	20.00	25.00	25.00	25.00	25.00	25.00
Applied Music Fee (1)	60.00	65.00	70.00	75.00	75.00	85.00	90.00
Change-of-Course Fee	20.00	20.00	20.00	20.00	20.00	20.00	20.00
Chapel Forum Fee	10.00	10.00	10.00	10.00	10.00	10.00	10.00
Credit by Baylor Exam Fee	92.50	100.00	107.50	116.00	129.00	134.50	144.00
General Student Fee (2)	255.00	270.00	285.00	300.00	320.00	335.00	385.00
General University Deposit	100.00	100.00	100.00	100.00	100.00	100.00	100.00

Lab/Course Fees (3)	25.00	25.00	25.00	25.00	25.00	25.00	25.00
Late Registration Fee (4)	20.00	20.00	20.00	20.00	20.00	20.00	20.00
Vehicle Registration Fee (5)	65.00	65.00	70.00	70.00	70.00	90.00	95.00
Room	795.00	820.00	845.00	870.00	895.00	922.00	950.00
Increase from Prior Year	4.6%	3.1%	3.0%	3.0%	2.9%	3.0%	3.0%
Board (6)	955.00	1,000.00	1,030.00	1,060.00	1,085.00	1,113.00	1,170.00
Increase from Prior Year	4.9%	4.7%	3.0%	2.9%	2.4%	2.6%	5.1%
Increase in Semester Charges from 1991-92 to 1997-98:					Tuition per hour	55.7%	
					Room	19.5%	
					Board	22.5%	

Notes:

- (1) Supplemental charge per semester for one 30 minute lesson per week.
- (2) Effective June 1, 1986, General Student Fee replaced Health, Legal Advisor, Recreation/Activity/Sport and other specific student service fees. Effective June 1, 1987, fee includes Information Systems Fee and Facilities Use and Development Fee.
- (3) Fees for certain courses may be higher. Also, various science courses require deposits.
- (4) Effective June 1, 1989, fee is graduated: \$20.00 first through third class days, \$30.00 fourth through tenth class days, \$50.00 eleventh class day and after.
- (5) Annual automobile fee (September - August).
- (6) Twenty meal plan, per semester, not including sales tax.

Source: Controller's Office



[Back to Table of Contents](#)

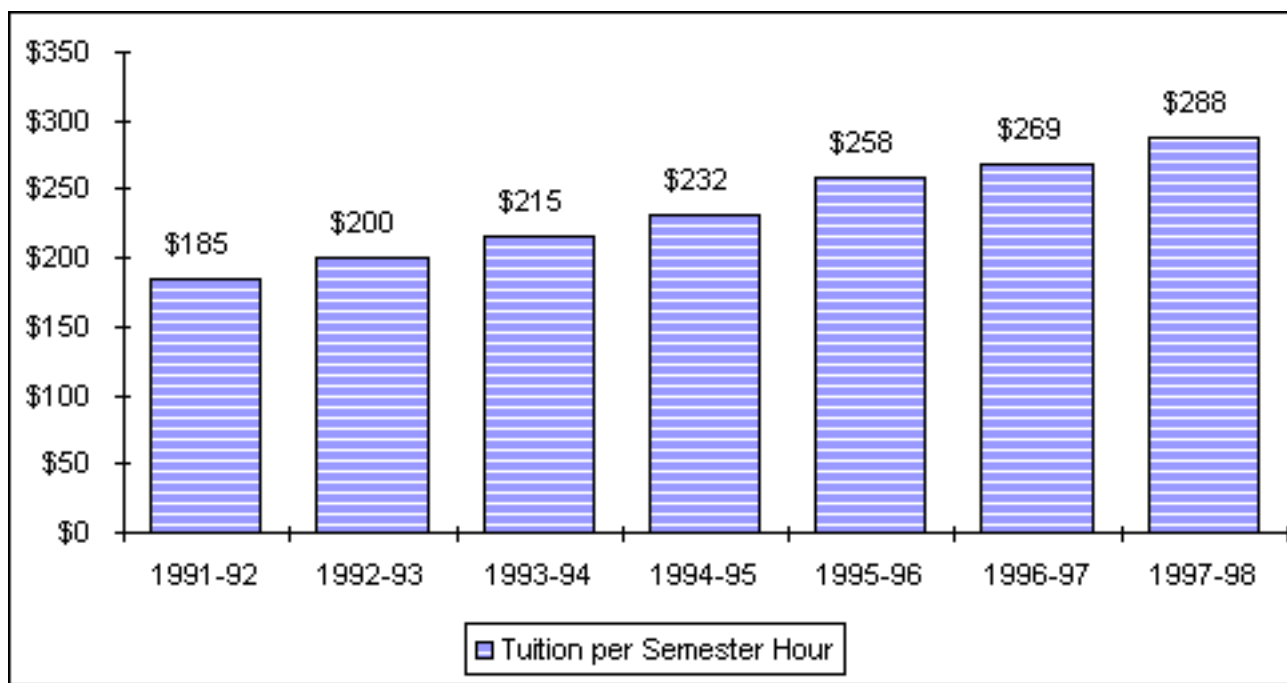
Next: Tuition, Room and Board Charges

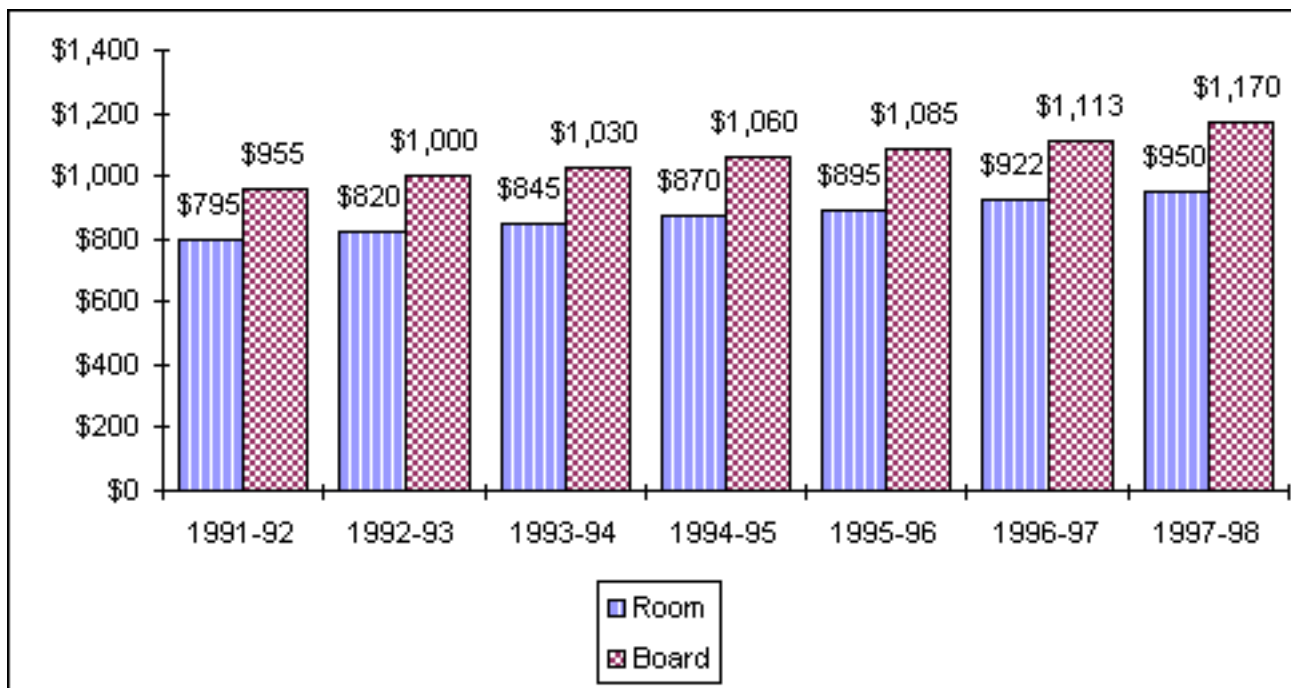




Trends for 1991-1997.

Tuition, Room and Board Charges





Source: Controller's Office



[Back to Table of Contents](#)

Next: Undergraduate Student Cost Profile

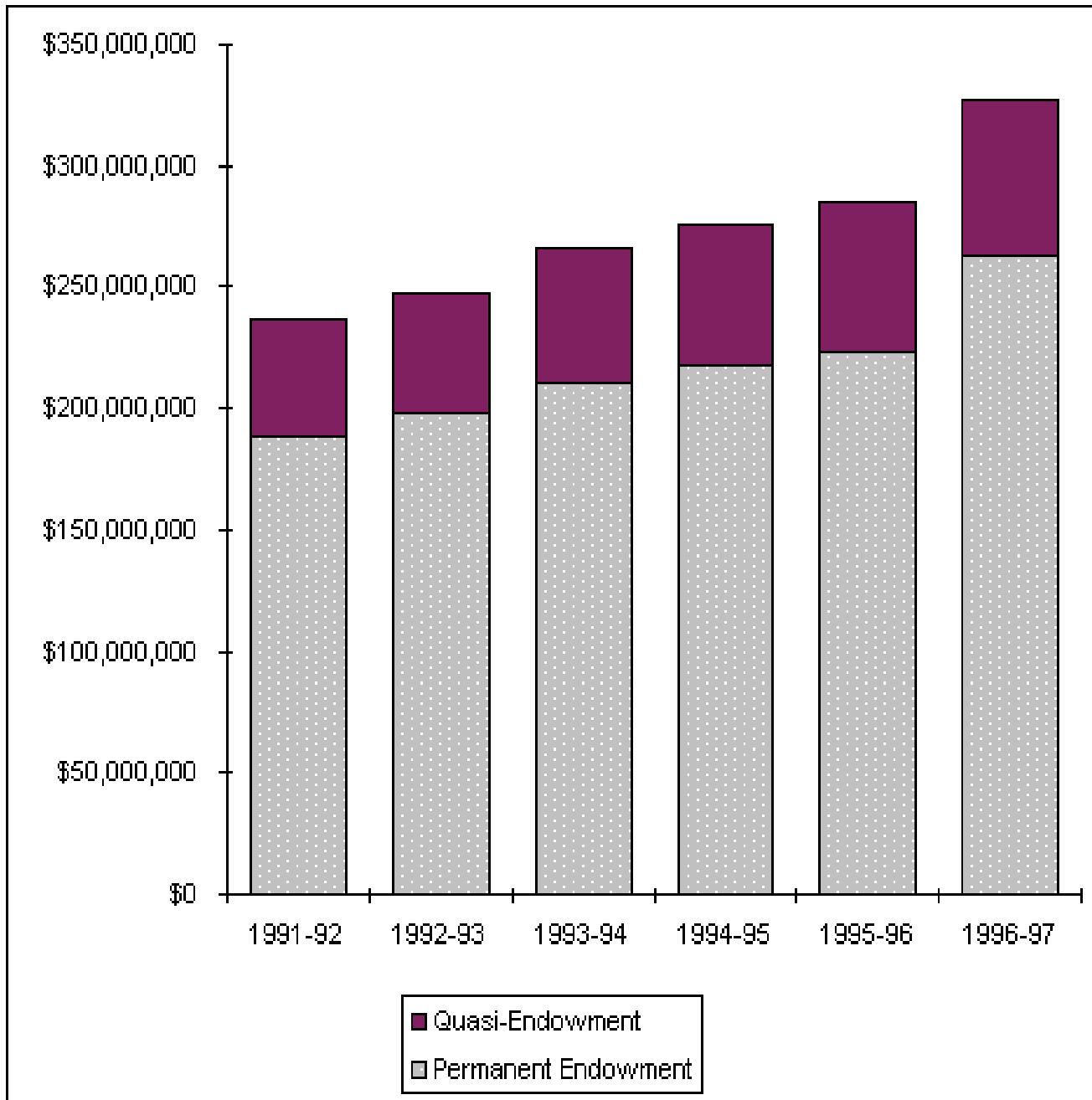




Trends for 1991-1997.

Undergraduate Student Cost Profile

	1991-92	1992-93	1993-94	1994-95	1995-96	1996-97	1997-98
Tuition & Fees	\$6,110	\$6,590	\$7,070	\$7,624	\$8,444	\$8,806	\$9,478
Average Room & Board	\$3,658	\$3,805	\$3,920	\$4,034	\$4,140	\$4,254	\$4,433
Estimated Books & Supplies	\$560	\$584	\$600	\$616	\$634	\$652	\$670
Average Personal Expenses	\$1,252	\$1,308	\$1,346	\$1,386	\$1,426	\$1,468	\$1,512
Average Travel Expenses	\$772	\$806	\$830	\$854	\$878	\$904	\$930
Average Total Cost	\$12,352	\$13,093	\$13,766	\$14,514	\$15,522	\$16,084	\$17,023
Increase from Prior Year	6.8%	6.0%	5.1%	5.4%	6.9%	3.6%	5.8%



Source: ICUT



[Back to Table of Contents](#)

Next: Sources of Revenues





Trends for 1991-1997.

Sources of Revenues

	1991-92	1992-93	1993-94	1994-95	1995-96	1996-97
Educational & General:						
Tuition & Fees	\$68,940,782	\$75,284,497	\$80,903,995	\$86,690,344	\$95,766,633	\$102,119,795
Gifts & Private Grants	4,916,768	4,138,289	4,925,502	4,787,398	6,096,926	6,498,951
Baptist General Convention of Texas Appropriation	6,534,290	3,802,305	3,906,801	3,863,765	3,686,271	3,928,739
Permanent Endowment Income	11,734,479	12,219,430	11,877,759	12,415,371	12,972,774	13,822,654
Quasi-Endowment Income	2,186,915	2,297,276	2,570,557	2,610,075	2,790,181	2,982,597
Grants & Contracts	8,468,589	8,579,927	8,410,074	9,044,914	10,632,436	11,544,893
Investment Income	1,227,124	1,045,702	1,081,261	1,715,764	1,813,056	1,963,430
Other Sources	8,697,435	10,168,371	10,841,685	9,130,582	11,017,165	10,663,811
Total Educational & General	112,706,382	117,535,797	124,517,634	130,258,213	144,775,442	153,524,870

Auxiliary Enterprises	23,270,871	24,235,570	24,669,743	25,329,146	26,144,088	29,566,793
Total Revenues	\$135,977,253	\$141,771,367	\$149,187,377	\$155,587,359	\$170,919,530	\$183,091,663

Source: Annual Reports



[Back to Table of Contents](#)

Next: Sources of Revenue as a Percentage of Total Revenues





Trends for 1991-1997.

Sources of Revenue as a Percentage of Total Revenues

	1991-92	1992-93	1993-94	1994-95	1995-96	1996-97
Educational & General:						
Tuition & Fees	50.7%	53.1%	54.2%	55.7%	56.0%	55.8%
Gifts & Private Grants	3.6%	2.9%	3.3%	3.1%	3.6%	3.5%
Baptist General Convention of Texas Appropriation	4.8%	2.7%	2.6%	2.5%	2.2%	2.1%
Permanent Endowment Income	8.6%	8.6%	8.0%	8.0%	7.6%	7.5%
Quasi-Endowment Income	1.6%	1.6%	1.7%	1.7%	1.6%	1.6%
Grants & Contracts	6.2%	6.1%	5.6%	5.8%	6.2%	6.3%
Investment Income	0.9%	0.7%	0.7%	1.1%	1.1%	1.1%
Other Sources	6.4%	7.2%	7.3%	5.9%	6.4%	5.8%
Total Educational & General	82.9%	82.9%	83.5%	83.7%	84.7%	83.9%
Auxiliary Enterprises	17.1%	17.1%	16.5%	16.3%	15.3%	16.1%
Total Revenues	100.0%	100.0%	100.0%	100.0%	100.0%	100.0%

Source: Annual Reports



[Back to Table of Contents](#)

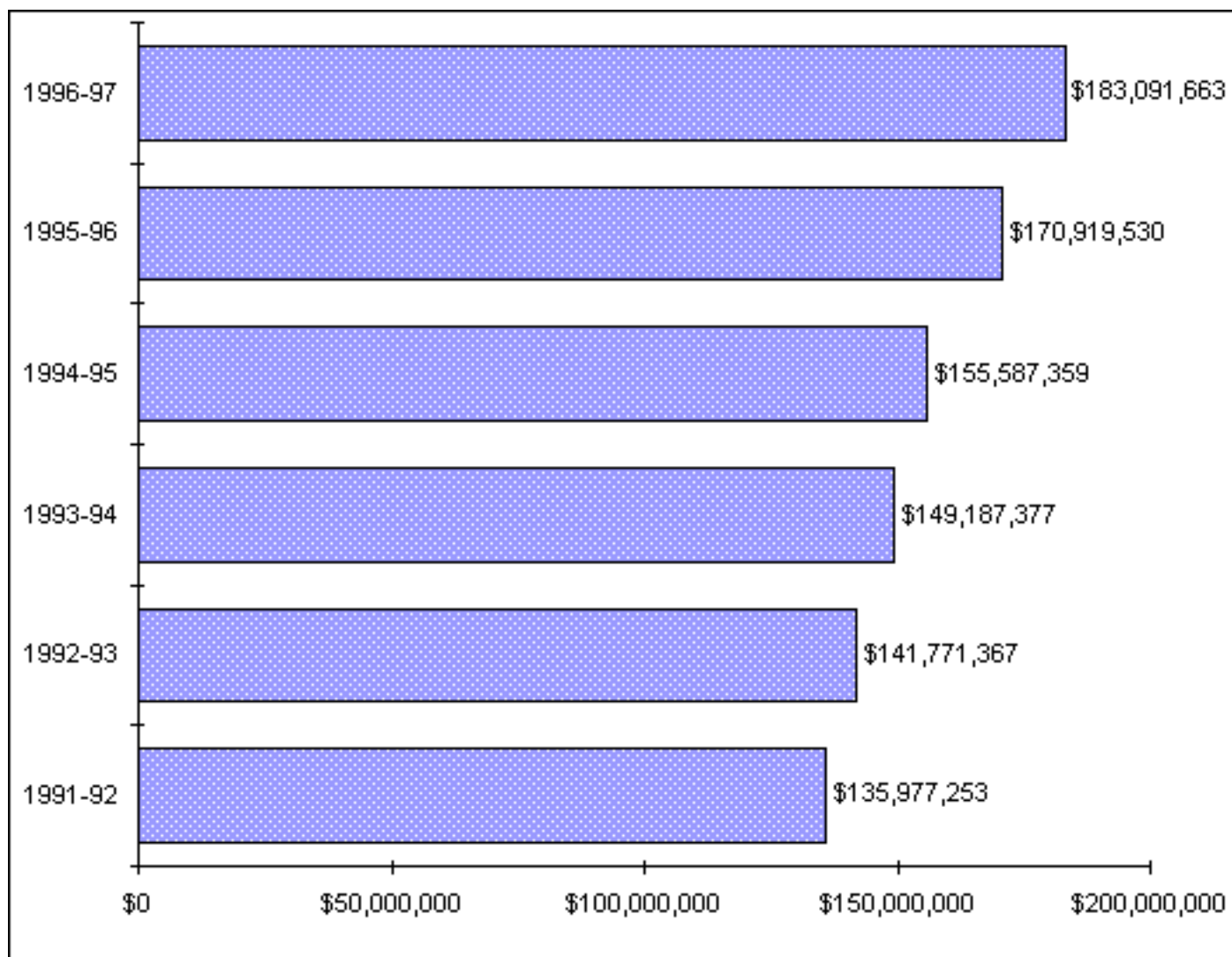
Next: Revenues





Trends for 1991-1997.

Revenues (Continued)



Source: Annual Reports



[Back to Table of Contents](#)

Next: Functions of Expenditures





Trends for 1991-1997.

Functions of Expenditures

	1991-92	1992-93	1993-94	1994-95	1995-96	1996-97
Educational & General:						
Instruction	\$53,367,634	\$55,821,343	\$57,454,444	\$61,216,035	\$65,820,176	\$67,763,446
Research	1,713,171	1,662,668	1,402,973	1,777,467	1,671,198	2,319,860
Academic Support	8,747,604	9,227,859	9,788,090	10,297,393	11,535,272	11,995,649
Student Services	8,796,694	9,392,588	9,656,549	10,047,060	10,657,551	11,014,451
Public Service	1,201,739	1,160,126	898,156	1,229,860	966,487	1,161,053
Plant Operations & Maintenance	7,948,451	8,354,998	8,556,718	8,874,008	9,832,246	10,165,521
Institutional Support	11,511,872	11,357,520	14,692,892	14,678,477	15,835,099	18,585,422
Scholarships & Fellowships	17,891,903	18,970,661	19,597,777	20,633,319	23,854,596	25,296,689
Educational & General Expenditures	111,179,068	115,947,763	122,047,599	128,753,619	140,172,625	148,302,091
Mandatory Transfers	540,799	1,345,189	(968,168)	78,999	67,518	95,975
Total Educational & General	111,719,867	117,292,952	121,079,431	128,832,618	140,240,143	148,398,066

Auxiliary Enterprises:						
Expenditures	21,018,616	21,683,751	22,132,691	23,525,279	24,287,081	27,314,680
Mandatory Transfers for:						
Principal & Interest	918,653	1,170,961	389,723	363,348	372,963	372,963
Renewals & Replacements	319,605	552,016	411,769	9,971	9,050	0
Total Auxiliary Enterprises	22,256,874	23,406,728	22,934,183	23,898,598	24,669,094	27,687,643
Total Expenditures & Mandatory Transfers						
	133,976,741	140,699,680	144,013,614	152,731,216	164,909,237	176,085,709
Excess Revenues Before Discretionary						
Transfers and Other Changes	2,000,512	1,071,687	5,173,763	2,856,143	6,010,293	7,005,954
Discretionary Transfers & Other Changes:						
Restricted Receipts Not Expended	709,570	374,685	2,888,115	3,232,816	4,186,322	3,426,025
Discretionary Transfers:						
Plant Funds	(2,714,305)	(1,004,034)	(2,390,537)	(3,806,622)	(3,582,943)	(5,757,897)
Quasi-Endowment Funds:						
Unrestricted	725,625	(75,356)	(2,795,835)	791,212	(2,419,615)	(1,358,021)
Restricted	(368,785)	(229,711)	(2,106,817)	(1,715,101)	(1,236,392)	(1,197,171)
Excess Revenues After Transfers and Other Changes:						
Restricted	\$337,328	\$116,376	\$747,340	\$1,358,448	\$2,957,665	\$2,118,890

Source: Annual Reports



[Back to Table of Contents](#)

Next: Functions of Expenditures as a Percentage of Total Expenditures and Mandatory Transfers





Trends for 1991-1997.

Functions of Expenditures as a Percentage of Total Expenditures and Mandatory Transfers

	1991-92	1992-93	1993-94	1994-95	1995-96	1996-97
Educational & General:						
Instruction	39.8%	39.7%	39.9%	40.1%	39.9%	38.5%
Research	1.3%	1.2%	1.0%	1.2%	1.0%	1.3%
Academic Support	6.5%	6.6%	6.8%	6.7%	7.0%	6.8%
Student Services	6.6%	6.7%	6.7%	6.6%	6.5%	6.3%
Public Service	0.9%	0.8%	0.6%	0.8%	0.6%	0.7%
Plant Operations & Maintenance	5.9%	5.9%	5.9%	5.8%	6.0%	5.8%
Institutional Support	8.6%	8.1%	10.2%	9.6%	9.6%	10.6%
Scholarships & Fellowships	13.4%	13.5%	13.6%	13.5%	14.5%	14.4%
Educational & General	83.0%	82.4%	84.7%	84.3%	85.0%	84.2%
Mandatory Transfers	0.4%	1.0%	-0.7%	0.1%	0.0%	0.1%
Total Educational & General	83.4%	83.4%	84.1%	84.4%	85.0%	84.3%
Auxiliary Enterprises:						
Expenditures	15.7%	15.4%	15.4%	15.4%	14.7%	15.5%

Mandatory Transfers for:							
Principal & Interest		0.7%	0.8%	0.3%	0.2%	0.2%	0.2%
Renewals & Replacements		0.2%	0.4%	0.3%	0.0%	0.0%	0.0%
Total Auxiliary Enterprises		16.6%	16.6%	15.9%	15.6%	15.0%	15.7%
Total Expenditures &							
Mandatory Transfers		100.0%	100.0%	100.0%	100.0%	100.0%	100.0%

Source: Annual Reports



[Back to Table of Contents](#)

Next: Endowment Fund Balance

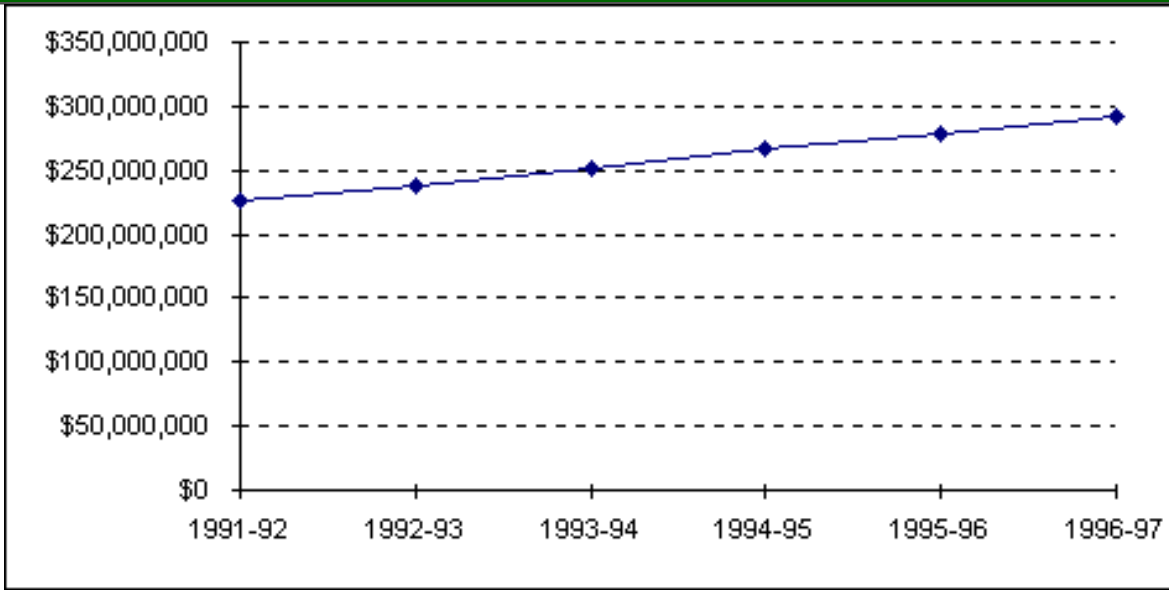




Trends for 1991-1997.

Property, Plant and Equipment

	1991-92	1992-93	1993-94	1994-95	1995-96	1996-97
Property, Plant & Equipment	\$226,590,552	\$237,757,738	\$251,931,960	\$266,665,724	\$278,959,946	\$292,069,595



* Does not reflect the impact of accumulated depreciation.

Source: Controller's Office



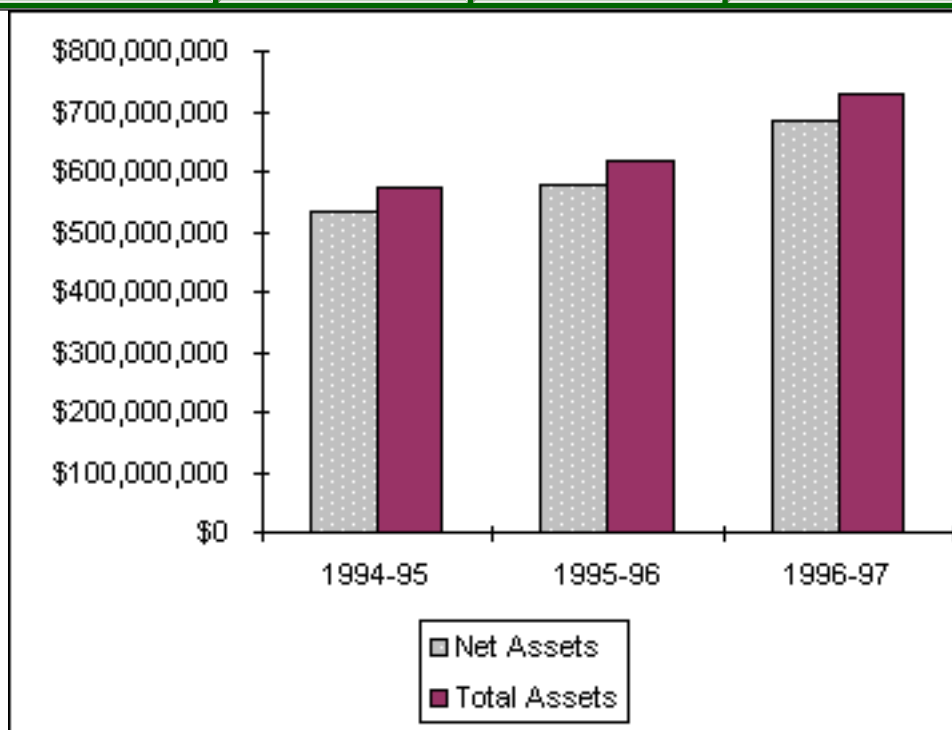
[Back to Table of Contents](#)



Trends for 1991-1997.

Assets

	1994-95	1995-96	1996-97
Net Assets	\$534,022,990	\$578,970,068	\$685,591,253
Total Assets	\$571,255,088	\$618,170,617	\$727,519,700





[Back to Table of Contents](#)

End of Trends Fall 1991 - Fall 1997