




Baylor Trends

For the years 1992 - 1998


ENROLLMENT AND STUDENT CHARACTERISTICS

1. [*New Freshman Applications and Enrollment*](#)
2. [*Transfer Applications and Enrollment*](#)
3. [*New Freshman Applications and Enrollment by Gender*](#)
4. [*New Freshman and Transfer Student Enrollment*](#)
5. [*Enrollment by Classification*](#)
6. [*Enrollment*](#)
7. [*Enrollment by Gender, Waco Campus*](#)
8. [*Enrollment by Religious Affiliation, Waco Campus*](#)
9. [*Baptist Percentage, Waco Campus*](#)
10. [*Enrollment by Racial/Ethnic Group*](#)
11. [*Racial/Ethnic Minority Percentage*](#)
12. [*Leading Texas Counties of Origin*](#)
13. [*Leading States of Origin*](#)
14. [*Percentage from Top Four Texas Counties*](#)
15. [*Percentage from Texas*](#)
16. [*Texas Enrollment by County*](#)
17. [*Enrollment by State*](#)
18. [*Countries Represented by Nonresident Aliens*](#)
19. [*Percentage of Nonresident Aliens*](#)
20. [*Enrollment by Unit*](#)
21. [*Enrollment Percentage by Unit*](#)
22. [*Student Credit Hours by Unit, Waco Campus*](#)
23. [*Retention of First-Time Freshman Classes*](#)
24. [*Distribution of Degrees*](#)
25. [*Summary of Degrees Awarded*](#)
26. [*Degree Programs*](#)

FACULTY AND STAFF

1. [Full-Time Faculty Positions](#)
 2. [Highest Degree Earned by Full-Time Faculty](#)
 3. [Percentage of Full-Time Faculty with Tenure](#)
 4. [Average Salaries of Full-Time Instructional Faculty on Academic Year Contracts](#)
 5. [Average Compensation of Full-Time Instructional Faculty on Academic Year Contracts](#)
 6. [Institutional Staff](#)
 7. [Percentage of Institutional Staff](#)
 8. [Faculty by Religious Affiliation](#)
 9. [Staff by Religious Affiliation](#)
- 

FINANCIAL

1. [Tuition and Other Semester Charges](#)
 2. [Tuition, Room and Board Charges](#)
 3. [Undergraduate Student Cost Profile](#)
 4. [Current Funds: Sources of Revenues](#)
 5. [Sources of Revenue as a Percentage of Total Revenues](#)
 6. [Revenues](#)
 7. [Functions of Expenditures](#)
 8. [Functions of Expenditures as a Percentage of Total Expenditures and Mandatory Transfers](#)
 9. [Endowment Fund Balance](#)
 10. [Property, Plant and Equipment](#)
 11. [Assets](#)
- 

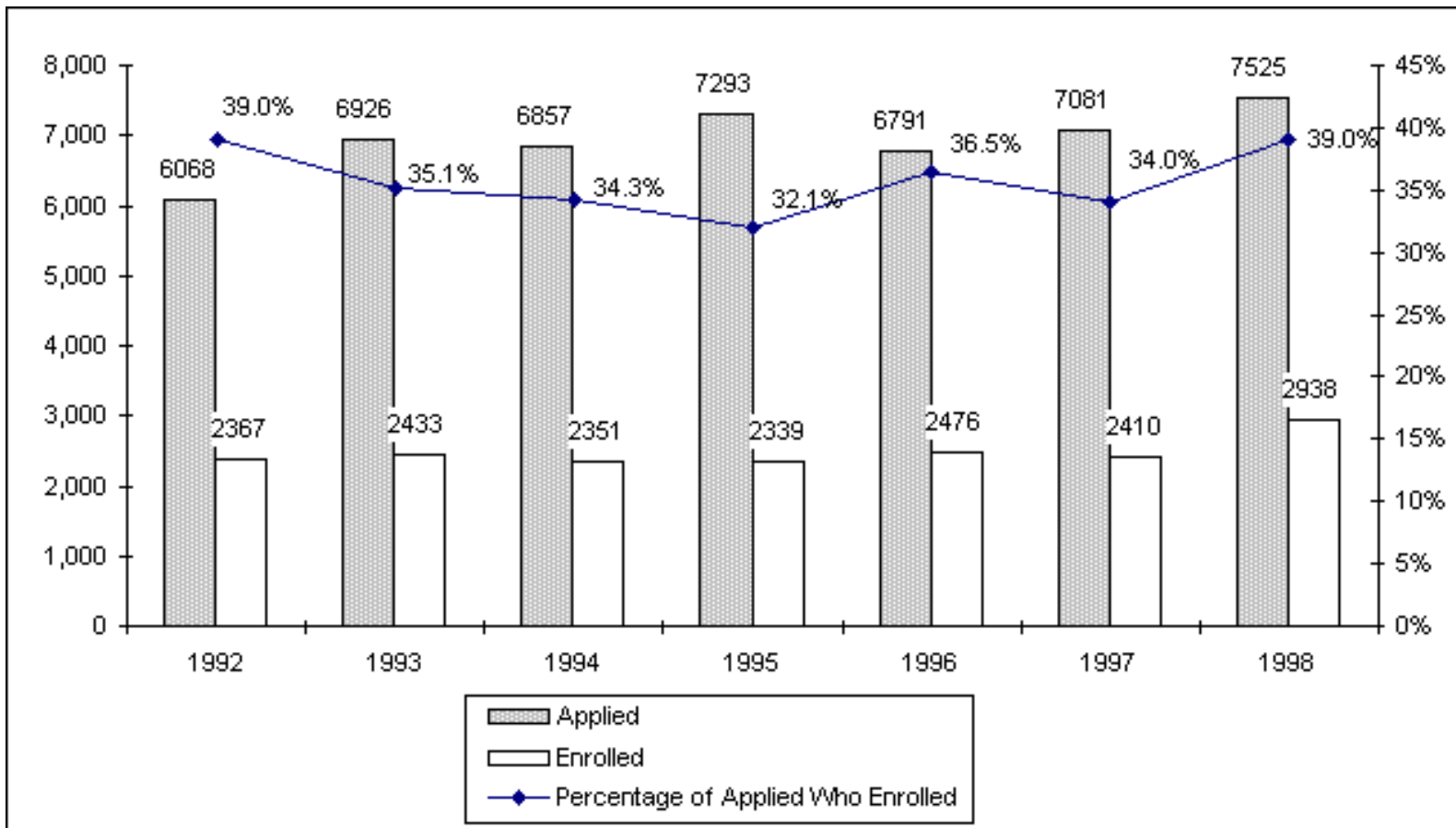
Prepared by:
The Office of Information Management and Testing
Services
<http://www3.baylor.edu/IMTS/>

&
The Admissions Office
<http://www3.baylor.edu/~Admissions>

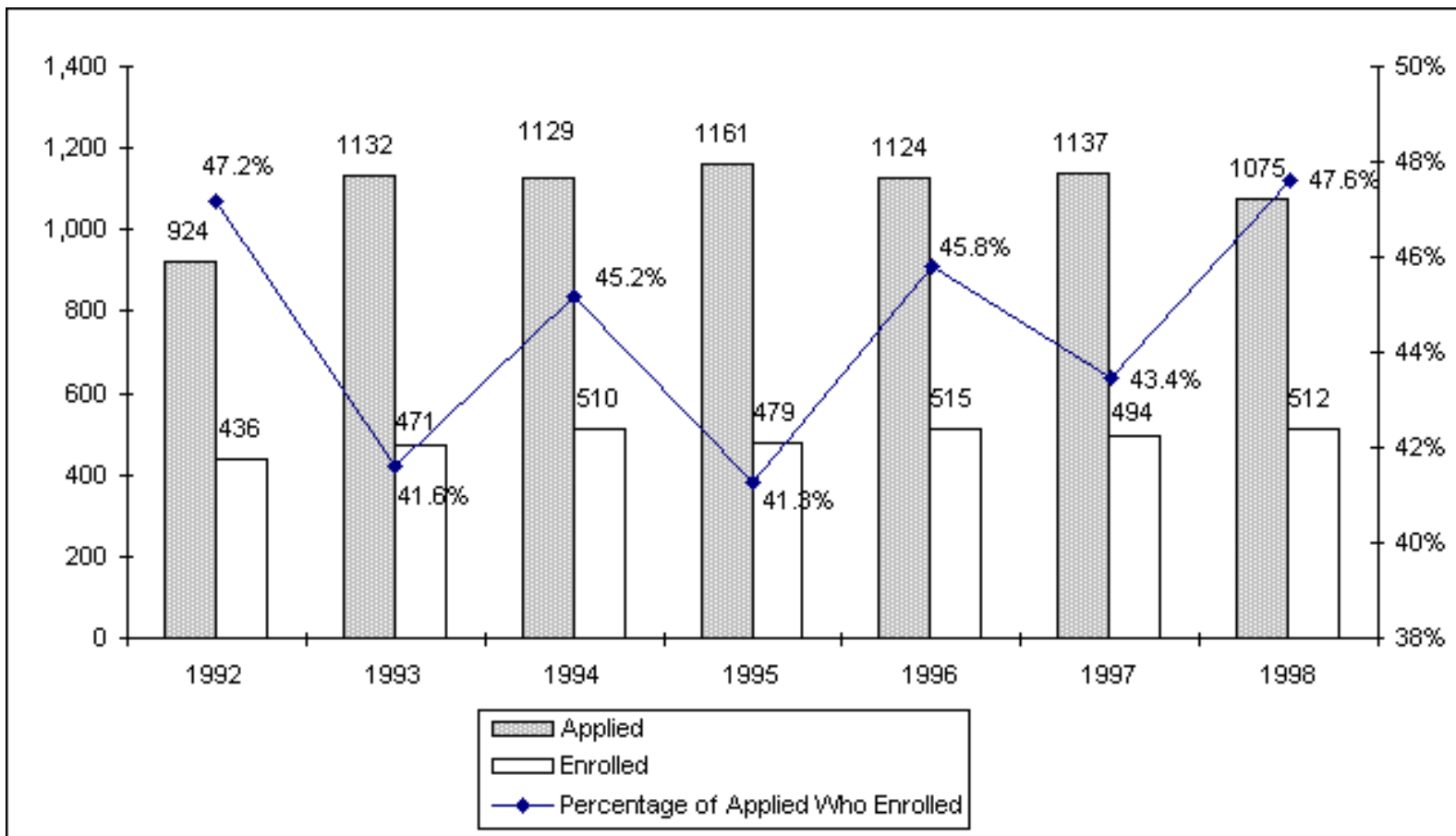
Please submit all questions and comments to IMTSwebmaster@baylor.edu

Trends 1992 - 1998

New Freshman Applications and Enrollment* Fall 1992 - Fall 1998



Transfer Applications and Enrollment* Fall 1992 - Fall 1998



*Applications that were canceled and changed to future terms not included. Enrollment as of 12th class day.

Sources: Admissions Office and IMTS



Back to Top



Back to Table of Contents

Go to New Freshman Applications and Enrollment by Gender

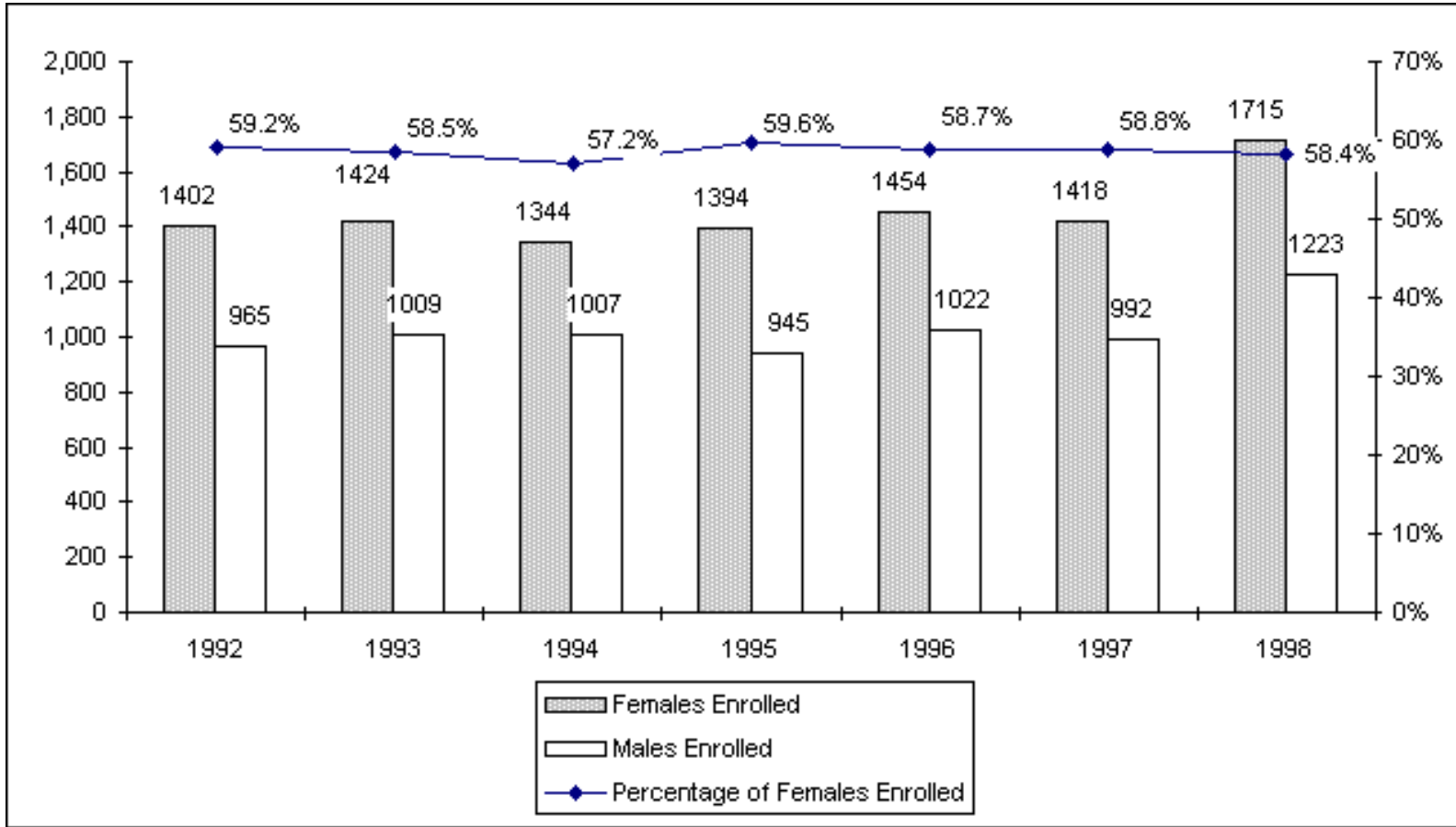
Last Updated on 3/16/99

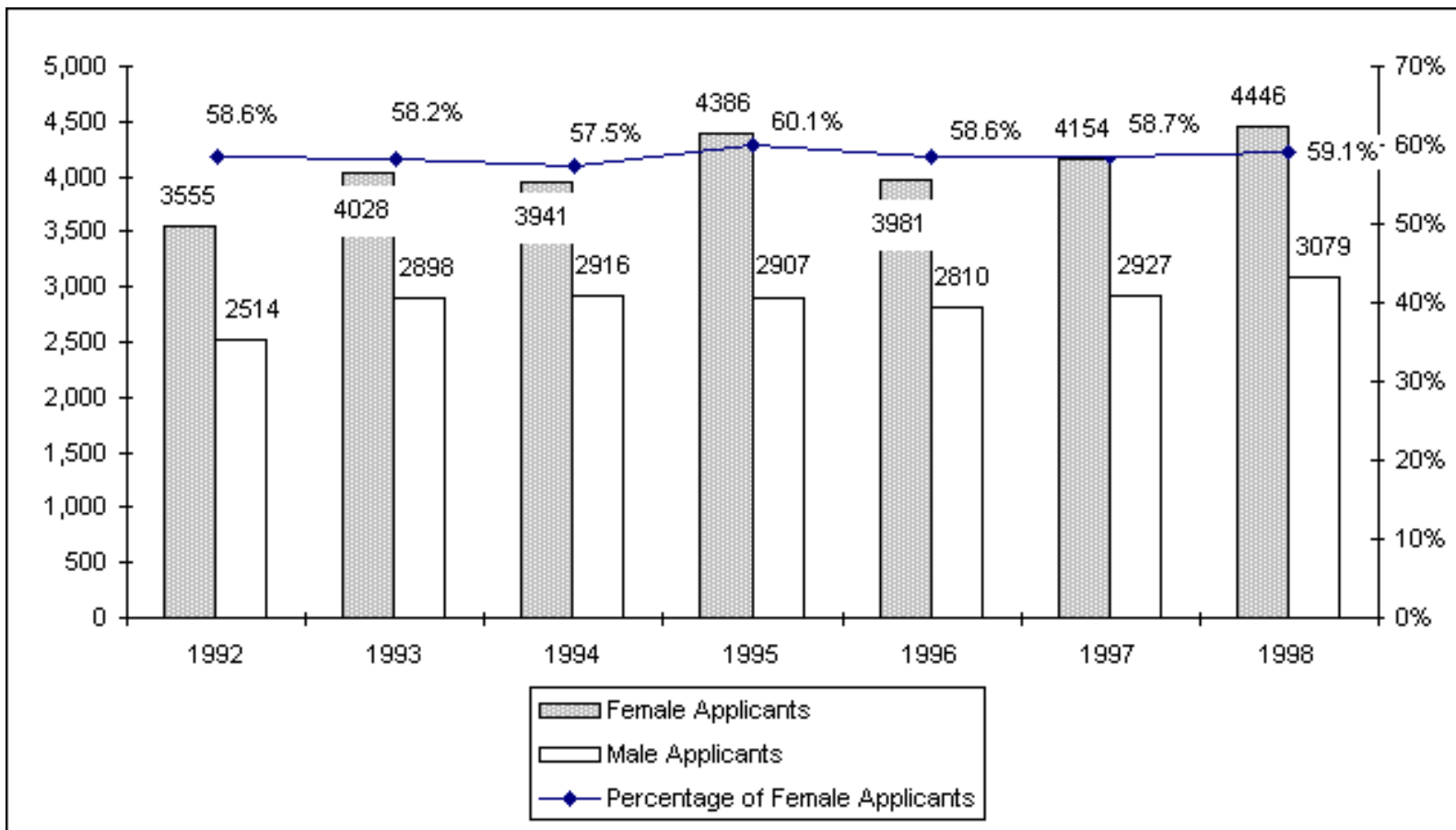
By Baylor University (IMTS)

Email: John_Coleman@baylor.edu

Trends 1992 - 1998

New Freshman Applications and Enrollment by Gender* Fall 1992 - Fall 1998





*Applications that were canceled and changed to future terms not included. Enrollment as of 12th class day.

Sources: Admissions Office and IMTS.



Back to Top



Back to Table of Contents

Go to New Freshman and Transfer Student Enrollment

Last Updated on 3/16/99

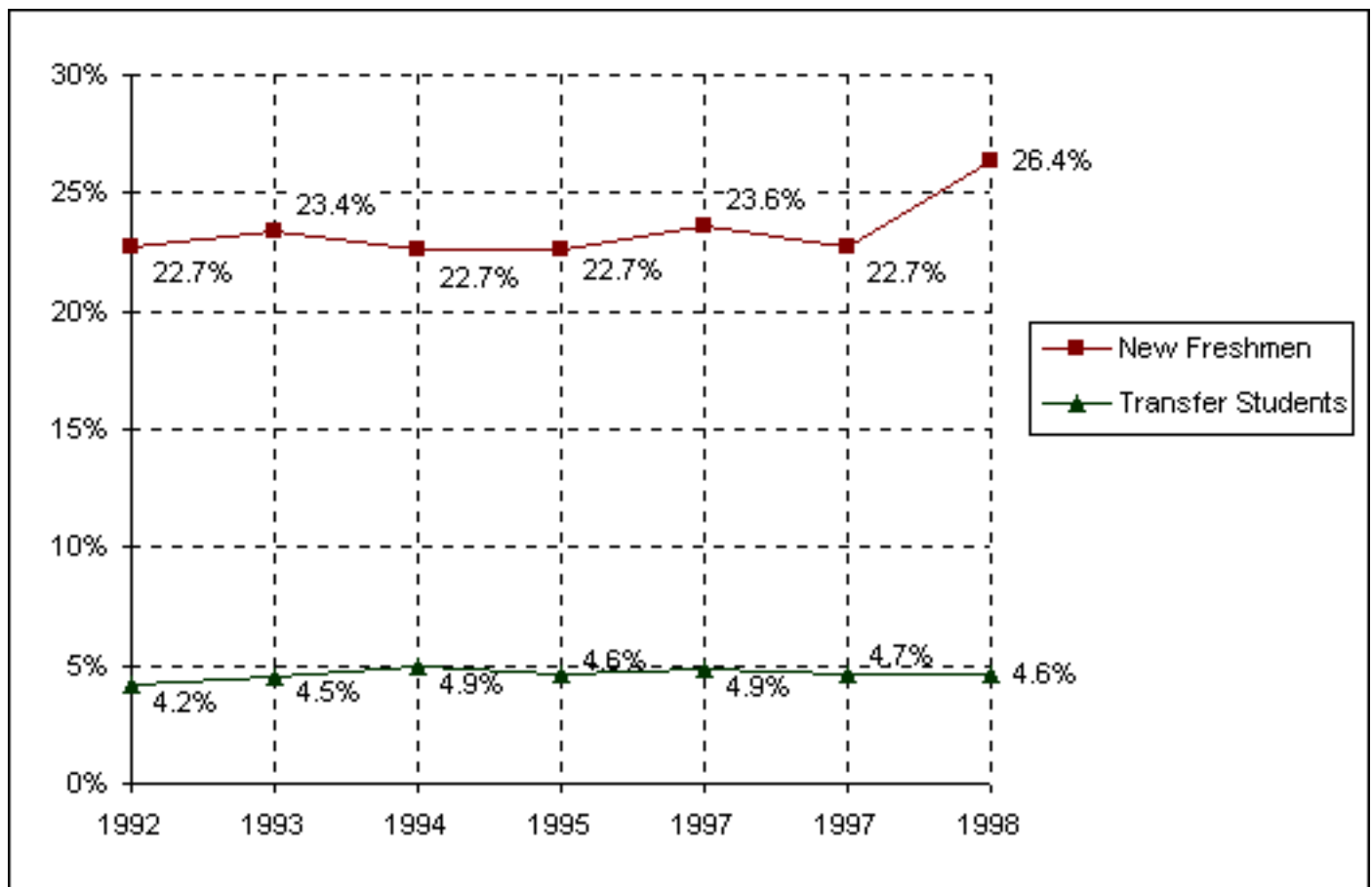
By Baylor University (IMTS)

Email: John_Coleman@baylor.edu

Trends 1992 - 1998

New Freshman and Transfer Student Enrollment Fall 1992 - Fall 1998

	Fall	<u>1992</u>	<u>1993</u>	<u>1994</u>	<u>1995</u>	<u>1997</u>	<u>1997</u>	<u>1998</u>
New Freshmen		2,367	2,433	2,351	2,339	2,476	2,410	2,938
Transfer Students		436	471	510	479	515	494	512
Undergraduate Enrollment		10,421	10,403	10,373	10,323	10,500	10,597	11,124
% New Freshmen		22.7%	23.4%	22.7%	22.7%	23.6%	22.7%	26.4%
% Transfer Students		4.2%	4.5%	4.9%	4.6%	4.9%	4.7%	4.6%



Notes:

1. Freshmen who enter the University in the fall or preceding summer term are counted as "new freshmen." Similarly, transfer students entering in the fall or preceding summer term are counted as "transfer students" for the fall semester.

2. "Transfer students" refers to the entering summer/fall group of transfer students. For example, in Fall 1998, the 512 entering transfer students comprised 4.6% of the 11,124 undergraduates. However, for Fall 1998, the total number of enrolled undergraduates who had transferred into the University consisted of (a) transfers who entered in Fall 1998 and (b) students who transferred into the University in previous academic years. Generally, the total enrollment of students who had entered as transfer students is approximately 15% of the undergraduate student body.

Sources: Admissions Office and IMTS.



Back to Top



Back to Table of Contents

Go to Enrollment by Classification

Last Updated on 3/16/99

By Baylor University (IMTS)

Email: John_Coleman@baylor.edu

Trends 1992 - 1998

Enrollment by Classification Fall 1992 - Fall 1998

	Fall	1992	1993	1994	1995	1996	1997	1998
Freshman		3,226	3,256	3,205	3,043	3,151	3,070	3,566
Sophomore		2,245	2,075	2,183	2,230	2,210	2,458	2,333
Junior		2,074	2,069	2,041	2,182	2,166	2,139	2,314
Senior		2,652	2,815	2,686	2,646	2,819	2,774	2,779
Special		27	32	54	22	26	40	28
Special Postbaccalaureate		148	107					
Postbaccalaureate		49	49	204	200	128	116	104
TOTAL UNDERGRADUATE		10,421	10,403	10,373	10,323	10,500	10,597	11,124
Master's		1,043	1,055	1,047	1,022	989	945	929
Doctoral		272	306	316	347	349	356	360
Graduate Transient/Nondegree		27	18			23	28	10
Special Graduate			5	57	40	9	20	15
Law		422	407	396	394	398	396	401
Seminary				51	76	123	130	148
TOTAL ENROLLMENT		12,185	12,194	12,240	12,202	12,391	12,472	12,987

Source: IMTS.



Back to Top



Back to Table of Contents

Go to Enrollment

Last Updated on 3/16/99

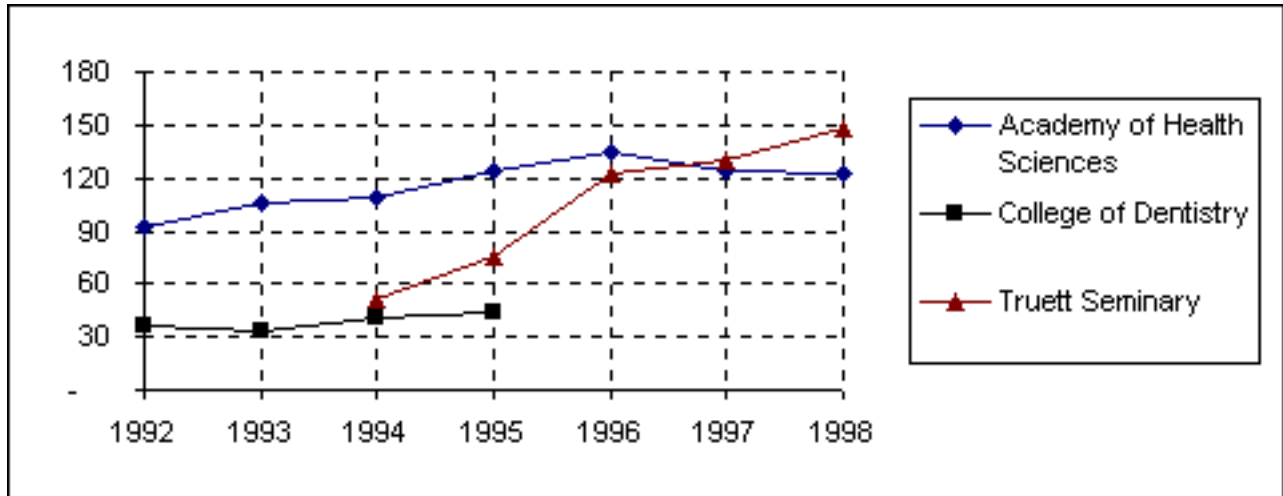
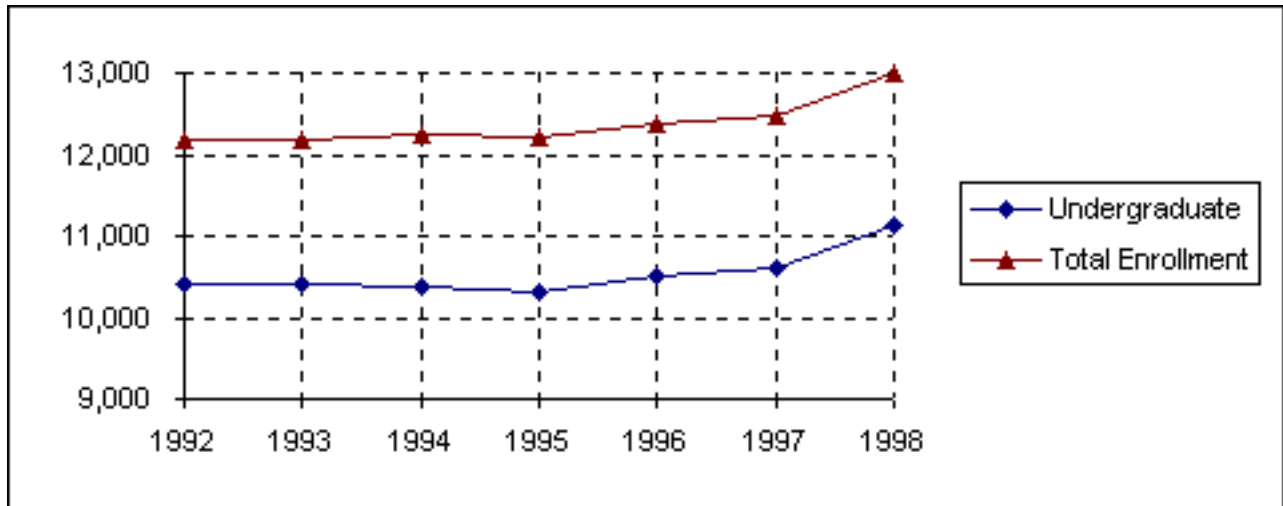
By Baylor University (IMTS)

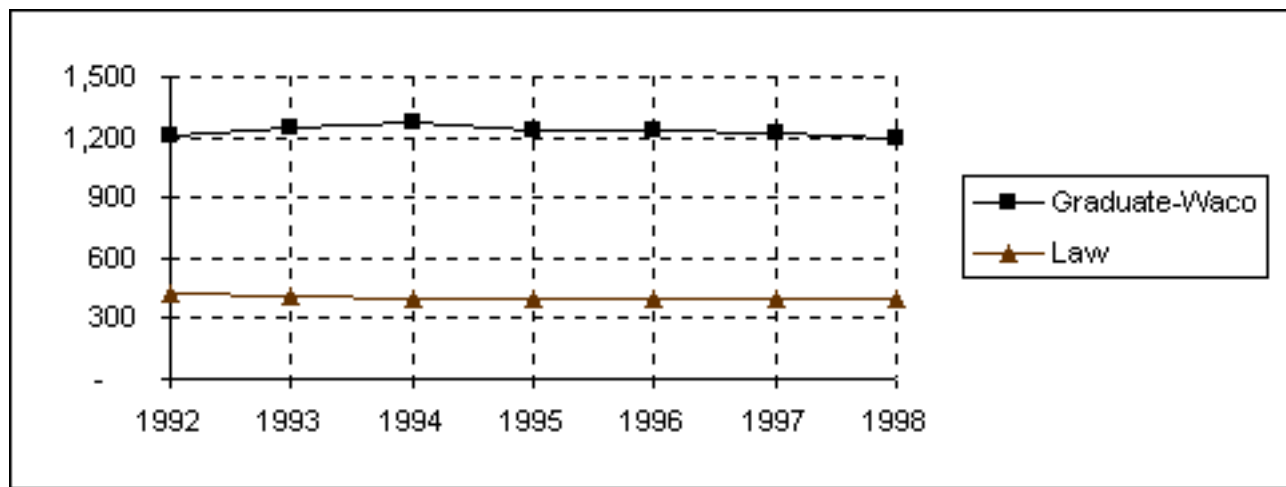
Email: John_Coleman@baylor.edu

Trends 1992-1998

Enrollment

Fall 1992 - Fall 1998





	Fall	1992	1993	1994	1995	1996	1997	1998
Undergraduate		10,421	10,403	10,373	10,323	10,500	10,597	11,124
Graduate-Waco		1,213	1,244	1,270	1,241	1,235	1,225	1,192
Law		422	407	396	394	398	396	401
Truett Seminary				51	76	123	130	148
TOTAL WACO CAMPUS		12,056	12,054	12,090	12,034	12,256	12,348	12,865
College of Dentistry		37	34	41	44			
Academy of Health Sciences		92	106	109	124	135	124	122
TOTAL ENROLLMENT		12,185	12,194	12,240	12,202	12,391	12,472	12,987

Source: IMTS



Back to Top

Back to Table of Contents



Go to Enrollment by Classification

Last Updated on 3/16/99

By Baylor University(IMTS)

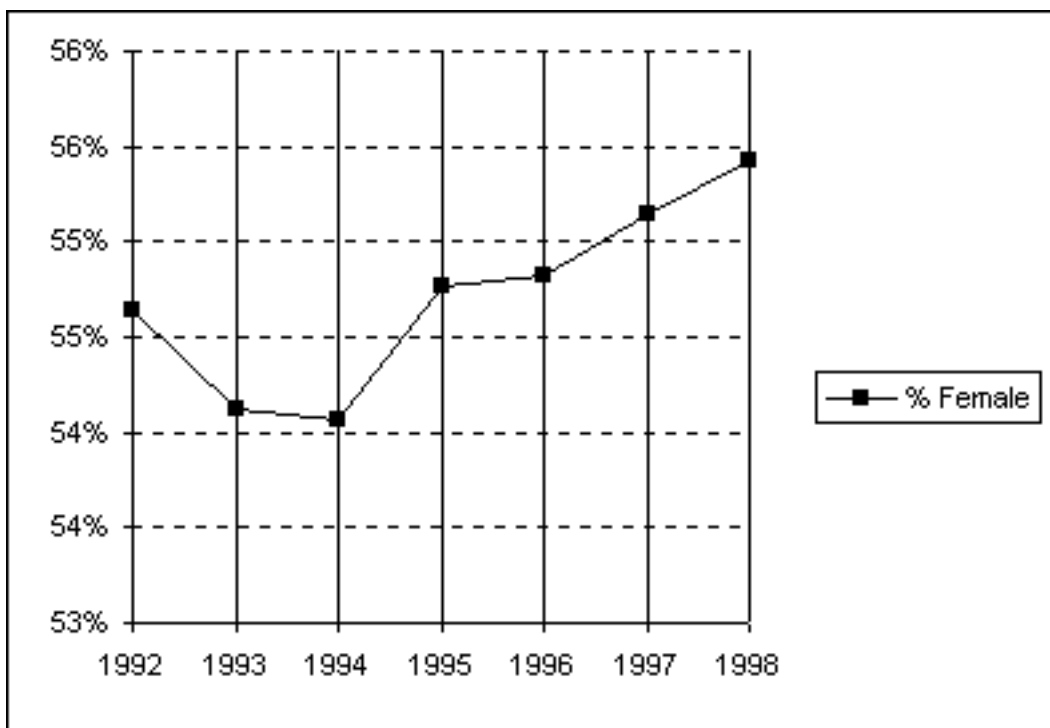
Email: John_Coleman@baylor.edu

Trends 1992 - 1998

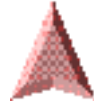
Enrollment by Gender

Fall 1992 - Fall 1998

Fall	1992	1993	1994	1995	1996	1997	1998
Female	6,587	6,524	6,536	6,591	6,719	6,809	7,131
Male	5,469	5,530	5,554	5,443	5,537	5,539	5,734
Waco Campus	12,056	12,054	12,090	12,034	12,256	12,348	12,865
% Female	54.6%	54.1%	54.1%	54.8%	54.8%	55.1%	55.4%
% Male	45.4%	45.9%	45.9%	45.2%	45.2%	44.9%	44.6%



Source: IMTS



Back to Top



Back to Table of Contents

**Go to Enrollment by Religious Affiliation, Waco
Campus**

Last Updated on 3/16/99

By Baylor University (IMTS)

Email: John_Coleman@baylor.edu

Trends 1992 - 1998

Enrollment by Religious Affiliation, Waco Campus Fall 1992 - Fall 1998

	Fall	1992	1993	1994	1995	1996	1997	1998
Assembly of God		137	155	162	149	157	148	149
Baptist		5,746	5,546	5,350	5,192	5,208	5,247	5,475
Buddhist		57	62	73	84	75	66	70
Catholic		1,287	1,388	1,500	1,511	1,528	1,544	1,590
Christian Scientist		7	8	9	8	8	6	8
Church of Christ		257	255	242	269	246	243	260
Church of God		22	18	19	23	32	18	25
Congregational		26	28	24	21	20	14	14
Disciples of Christ		96	100	92	89	85	83	81
Eastern Orthodox		33	29	45	44	44	45	44
Episcopalian		312	315	314	307	289	271	271
Four Square Gospel		3	6	8	9	13	11	9
Hindu		-	29	50	59	65	75	67
Interdenominational		272	310	332	370	389	403	425
Jehovah's Witness		6	9	9	7	9	9	9
Jewish		15	18	18	17	10	10	8
Latter Day Saints (Mormon)		14	6	21	22	19	19	22
Lutheran		327	335	356	363	383	346	383
Mennonite		5	6	5	4	4	3	5
Methodist		1,279	1,268	1,241	1,227	1,274	1,190	1,168
Moslem		23	25	42	48	55	56	58
Nazarene		24	29	29	23	27	30	29

Pentecostal	44	49	57	68	74	72	67
Presbyterian	571	571	608	554	542	528	532
Society of Friends	4	1	6	7	7	6	7
Unitarian	5	6	9	9	11	8	6
United Brethren	2	2	3	3	5	6	6
Other/Not Specified	1,482	1,470	1,466	1,547	1,677	1,891	2,077
TOTAL RELIGION	12,056	12,044	12,090	12,034	12,256	12,348	12,865

Source: IMTS



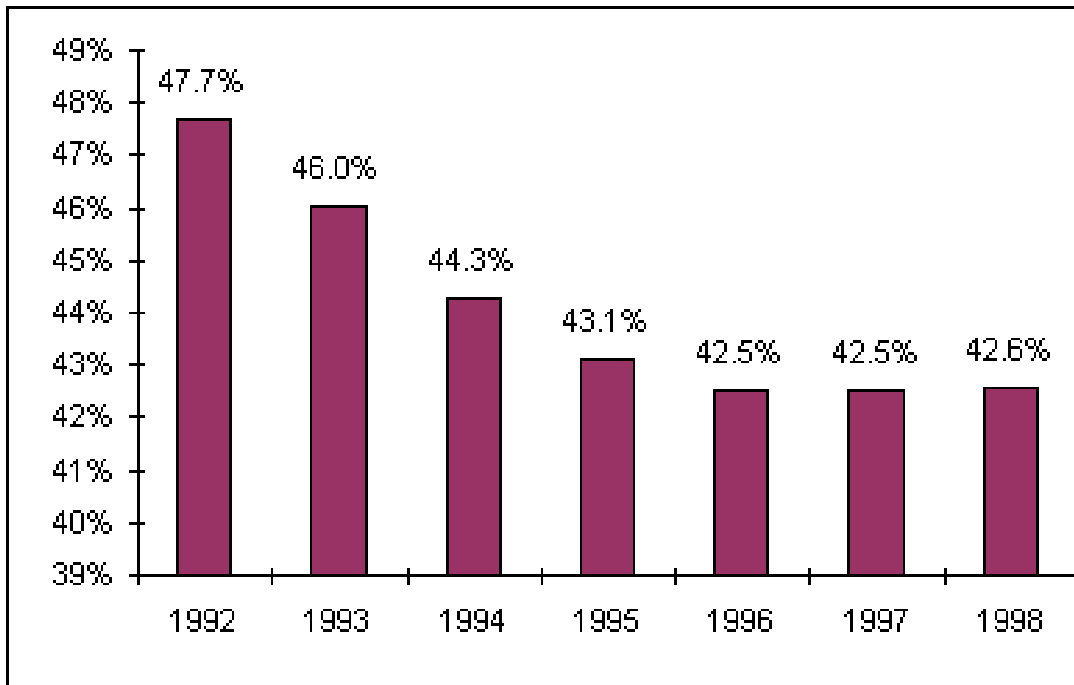
Back to Top

Back to Table of Contents   **Go to Baptist Percentage, Waco Campus**

Last Updated on 3/23/99
By Baylor University (IMTS)
Email: John_Coleman@baylor.edu

Trends 1992 - 1998

Baptist Percentage, Waco Campus Fall 1992 - Fall 1998



Source: IMTS


Back to Top

Back to Table of Contents



**Go to Enrollment by Racial/Ethnic Group &
Racial /Ethnic Minority Percentage**

Last Updated on 3/23/99

By Baylor University (IMTS)

Email: John_Coleman@baylor.edu

Trends 1992 - 1998

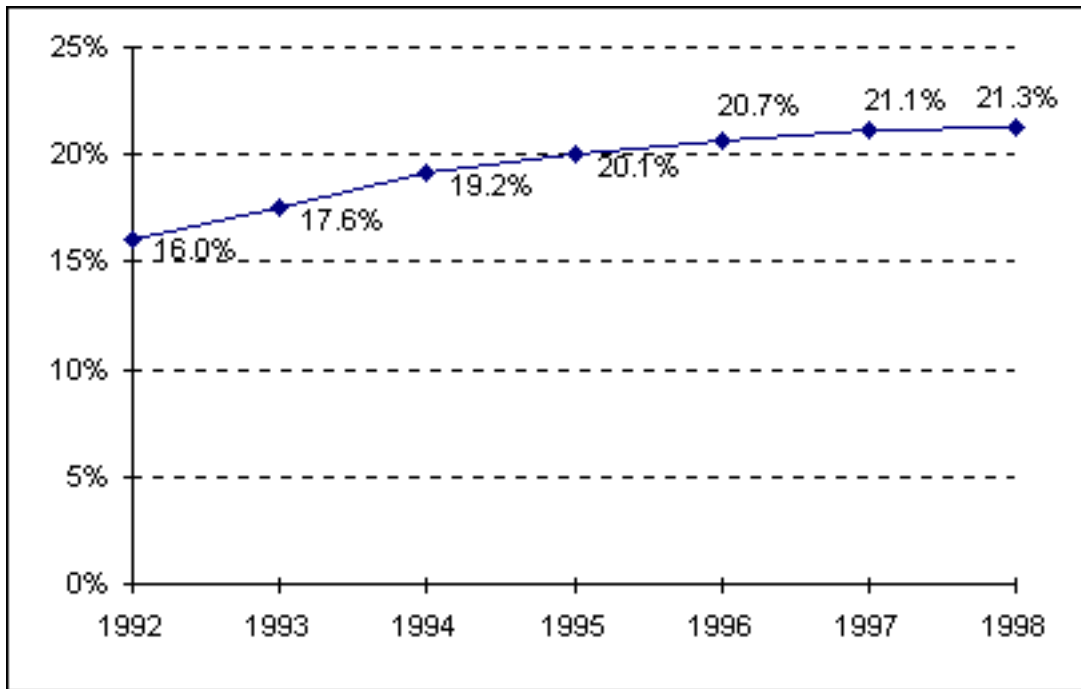
Enrollment by Racial / Ethnic Group*

Fall 1992 - Fall 1998

A.	Fall	1992	1993	1994	1995	1996	1997	1998
African American/Black		450	493	517	529	623	685	726
American Indian/Alaskan Native		45	55	46	60	60	64	74
Asian/Pacific Islander		669	724	770	777	796	793	809
Hispanic		696	776	902	956	931	917	941
White		10,221	10,018	9,824	9,662	9,739	9,717	9,995
Other		94	95	115	129	149	178	216
Not Specified		10	33	66	89	93	118	226
Total		12,185	12,194	12,240	12,202	12,391	12,472	12,987
B.	Fall	1992	1993	1994	1995	1996	1997	1998
African American/Black		438	480	502	517	609	675	713
American Indian/Alaskan Native		45	55	46	60	60	63	73
Asian/Pacific Islander		504	561	615	633	646	635	636
Hispanic		670	741	856	912	893	880	918
White		10,160	9,958	9,750	9,598	9,681	9,656	9,934
Other		67	64	88	97	120	149	189
Not Specified		8	33	61	77	81	112	212
NONRESIDENT ALIEN		293	302	322	308	301	302	312

Total	12,185	12,194	12,240	12,202	12,391	12,472	12,987
--------------	--------	--------	--------	--------	--------	--------	--------

*In Table B, nonresident aliens are partitioned as a group.



Source: IMTS



Back to Top

Back to Table of Contents



Go to Leading Texas Counties of Origin

Last Updated on 3/23/99

By Baylor University (IMTS)

Email: John_Coleman@baylor.edu

Trends 1992 - 1998

Leading Texas Counties of Origin

Fall 1992 - Fall 1998

	Fall 1992	1993	1994	1995	1996	1997	1998
McLennan	2,031	1,965	1,946	2,033	2,030	2,020	2,112
Harris	1,489	1,427	1,395	1,328	1,425	1,505	1,556
Dallas	1,200	1,188	1,146	1,120	1,080	1,125	1,208
Tarrant	712	646	663	714	675	726	734
Bexar	476	466	478	460	489	508	570
Collin	231	264	278	277	302	304	363
Travis	244	253	255	248	242	238	267
Bell	157	170	204	200	220	220	234
Fort Bend	133	141	143	165	172	194	218
Montgomery	94	110	122	136	151	184	204
Denton	93	96	88	103	124	139	145
Gregg	100	118	125	122	126	125	118
Smith	92	93	93	85	90	97	117
Williamson	79	92	97	96	110	110	115
Hidalgo	81	97	113	115	105	87	107
Galveston	88	104	113	102	104	106	98
Nueces	102	96	98	92	89	93	95
El Paso	91	96	93	94	90	78	90
Jefferson	93	89	79	77	77	78	87

Source: ICUT



Back to Top



Back to Table of Contents

Go to Leading States of Origin

Last Updated on 3/23/99

By Baylor University (IMTS)

Email: John_Coleman@baylor.edu

Trends 1992 - 1998

Leading States of Origin

Fall 1992 - Fall 1998

	Fall 1992	1993	1994	1995	1996	1997	1998
Texas	9,483	9,376	9,360	9,311	9,579	9,811	10,386
California	188	227	247	259	286	278	273
Oklahoma	250	246	238	245	254	247	237
Louisiana	168	183	181	180	163	157	147
Colorado	139	139	142	148	145	149	135
Arkansas	166	145	155	154	157	140	122
Missouri	191	205	177	150	148	122	111
Kansas	107	116	121	108	111	105	110
Florida	97	93	104	98	98	102	109

Source: ICUT



Back to Top



Back to Table of Contents

Go to Percentage from Top Four Texas Counties

Last Updated on 3/23/99

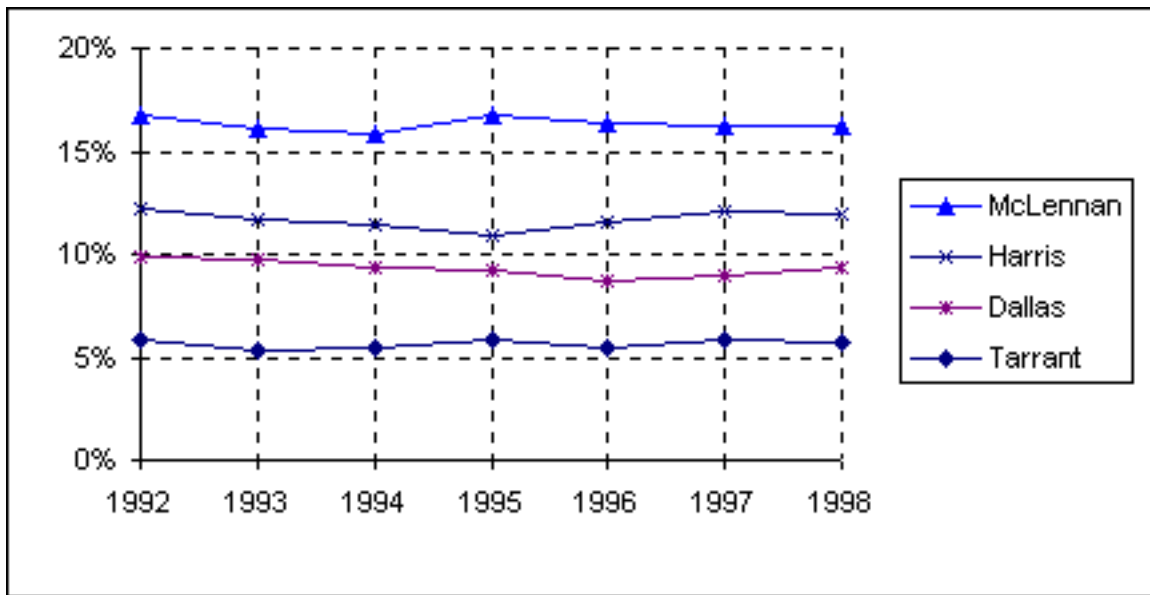
By Baylor University (IMTS)

Email: John_Coleman@baylor.edu

Trends 1992 - 1998

Percentage from Top Four Texas Counties
Fall 1992 - Fall 1998

	Fall 1992	1993	1994	1995	1996	1997	1998
McLennan	16.7%	16.1%	15.9%	16.7%	16.4%	16.2%	16.3%
Harris	12.2%	11.7%	11.4%	10.9%	11.5%	12.1%	12.0%
Dallas	9.9%	9.7%	9.4%	9.2%	8.7%	9.0%	9.3%
Tarrant	5.8%	5.3%	5.4%	5.9%	5.4%	5.8%	5.7%



Source: ICUT


Back to Top

Back to Table of Contents



Go to Percentage from Texas

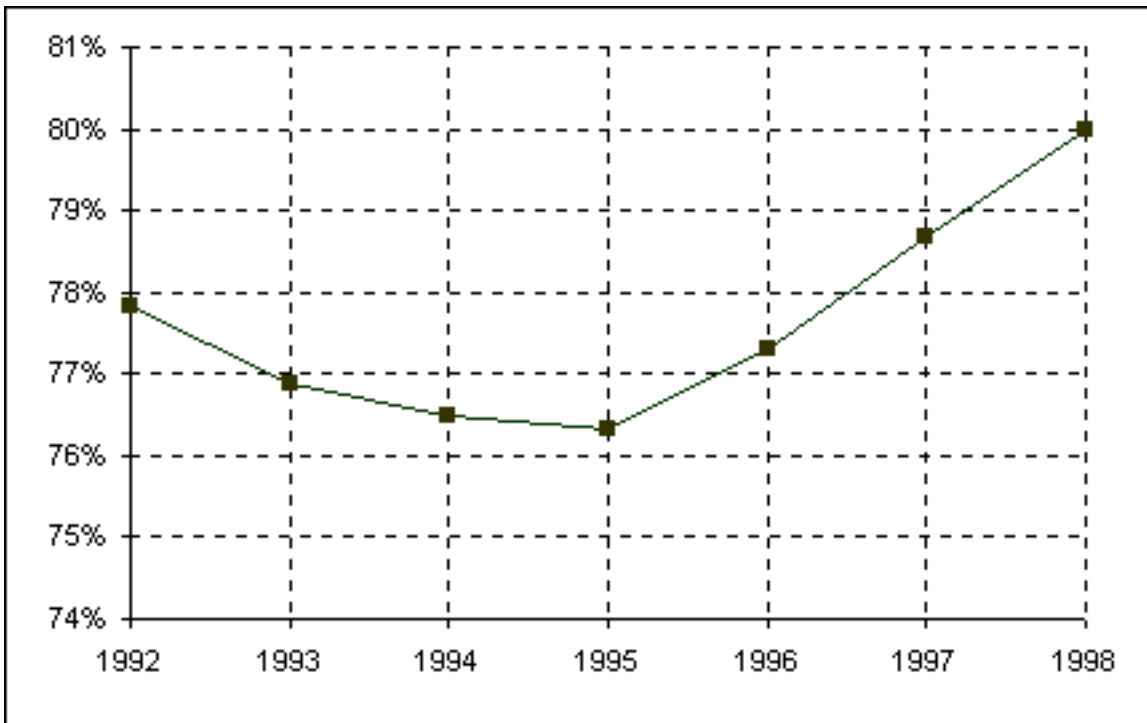
Last Updated on 3/23/99

By Baylor University (IMTS)

Email: John_Coleman@baylor.edu

Trends 1992 - 1998

Percentage from Texas
Fall 1992 - Fall 1998



Source: ICUT


Back to Top

Back to Table of Contents



Go to Texas Enrollment by County

Last Updated on 3/23/99

By Baylor University (IMTS)

Email: John_Coleman@baylor.edu

Trends 1992 - 1998

Texas Enrollment by County

Fall 1998

	n		n		n		n		n
Anderson	25	Crane	2	Hartley	0	Madison	0	San Patricio	7
Andrews	3	Crockett	0	Haskell	0	Marion	1	San Saba	2
Angelina	20	Crosby	1	Hays	23	Martin	1	Schleicher	2
Aransas	3	Culberson	1	Hemphill	0	Mason	0	Scurry	3
Archer	0	Dallam	0	Henderson	19	Matagorda	10	Shackelford	0
Armstrong	1	Dallas	1,208	Hidalgo	107	Maverick	12	Shelby	8
Atascosa	6	Dawson	1	Hill	38	McCulloch	3	Sherman	0
Austin	5	De Witt	5	Hockley	2	McLennan	2,112	Smith	117
		Deaf							
Bailey	3	Smith	2	Hood	18	McMullen	0	Somervell	4
Bandera	1	Delta	1	Hopkins	12	Medina	2	Starr	4
Bastrop	12	Denton	145	Houtson	7	Menard	1	Stephens	0
Baylor	0	Dickens	0	Howard	2	Midland	54	Sterling	0
Bee	2	Dimmit	0	Husdpeth	0	Milam	13	Stonewall	0
Bell	234	Donley	1	Hunt	14	Mills	1	Sutton	3
Bexar	570	Duval	1	Hutchinson	8	Mitchell	1	Swisher	0
Blanco	3	Eastland	4	Irion	1	Montague	5	Tarrant	734
Borden	0	Ector	32	Jack	5	Montgomery	204	Taylor	71
Bosque	24	Edwards	1	Jackson	7	Moore	9	Terrell	0
Bowie	21	El Paso	90	Jasper	12	Morris	5	Terry	1
Brazoria	64	Ellis	51	Jeff Davis	1	Motley	0	Throckmorton	0
Brazos	36	Erath	7	Jefferson	87	Nacagdoches	21	Titus	18
Brewster	2	Falls	26	Jim Hogg	0	Navarro	27	Tom Green	18
Briscoe	0	Fannin	6	Jim Wells	10	Newton	1	Travis	267
Brooks	2	Fayette	2	Johnson	64	Nolan	3	Trinity	2
Brown	8	Fisher	0	Jones	3	Nueces	95	Tyler	3

Burleson	4	Floyd	0	Karnes	2	Ochiltree	0	Upshur	14
Burnett	15	Foard	0	Kaufman	23	Oldham	0	Upton	1
Caldwell	9	Fort Bend	218	Kendall	22	Orange	19	Uvalde	3
Calhoun	7	Franklin	8	Kenedy	0	Palo Pinto	7	Val Verde	6
Callahan	2	Freestone	15	Kent	0	Panola	7	Van Zandt	8
Cameron	61	Frio	1	Kerr	15	Parker	27	Victoria	21
Camp	3	Gaines	1	Kimble	0	Parmer	0	Walker	20
Carson	3	Galveston	98	King	0	Pecos	1	Waller	6
Cass	7	Garza	1	Kinney	0	Polk	8	Ward	4
Castro	0	Gillespie	14	Kleberg	4	Potter	68	Washington	13
Chambers	0	Glasscock	0	Knox	0	Presidio	0	Webb	24
Cherokee	17	Goliad	1	La Salle	0	Rains	1	Wharton	8
Childress	1	Gonzales	5	Lamar	7	Randall	5	Wheeler	0
Clay	1	Gray	2	Lamb	0	Reagan	1	Wichita	18
Cochran	0	Grayson	16	Lampasas	15	Real	0	Wilbarger	7
Coke	1	Gregg	118	Lavaca	7	Red River	3	Willacy	5
Coleman	2	Grimes	2	Lee	4	Reeves	1	Williamson	115
Collin	363	Guadalupe	27	Leon	1	Refugio	1	Wilson	10
Collingsworth	0	Hale	11	Liberty	26	Roberts	0	Winkler	1
Colorado	3	Hall	0	Limestone	43	Robertson	5	Wise	5
Comal	21	Hamilton	2	Lipscomb	0	Rockwall	66	Wood	9
Comanche	4	Hansford	0	Live Oak	0	Runnels	3	Yoakum	0
Concho	0	Hardeman	3	Llano	3	Rusk	20	Young	7
Cooke	11	Hardin	8	Loving	0	Sabine	2	Zapata	0
						San			
Coryell	41	Harris	1,556	Lubbock	36	Augustine	0	Zavala	1
Cottle	0	Harrison	25	Lynn	1	San Jacinto	1	Total	10,386

Source: ICUT

**Back to Top**



Back to Table of Contents

Go to Enrollment by State

Last Updated on 3/23/99
By Baylor University (IMTS)
Email: John_Coleman@baylor.edu

Trends 1992 - 1998

Enrollment by State Fall 1998

Alabama	31
Alaska	22
Arizona	60
Arkansas	123
California	277
Colorado	135
Connecticut	9
Delaware	3
District of Columbia	0
Florida	109
Georgia	60
Hawaii	19
Idaho	8
Illinois	79
Indiana	30
Iowa	18
Kansas	111
Kentucky	19
Louisiana	149
Maine	4
Maryland	29
Massachusetts	16
Michigan	14

Minnesota	22
Mississippi	32
Missouri	111
Montana	1
Nebraska	24
Nevada	5
New Hampshire	13
New Jersey	21
New Mexico	70
New York	45
North Carolina	18
North Dakota	6
Ohio	25
Oklahoma	237
Oregon	21
Pennsylvania	18
Rhode Island	2
South Carolina	16
South Dakota	10
Tennessee	88
Texas	10386
Utah	7
Vermont	3
Virginia	67
Washington	37
West Virginia	1
Wisconsin	14
Wyoming	10
	12635

Source: ICUT



Back to Top



Back to Table of Contents

Go to Countries Represented by Nonresident Aliens & Percentage of Nonresident Aliens

Last Updated on 3/23/99

By Baylor University (IMTS)

Email: John_Coleman@baylor.edu

Trends 1992 - 1998

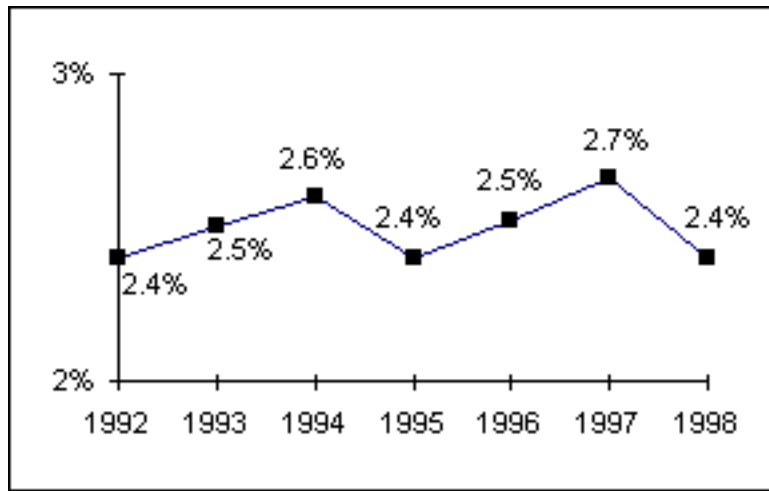
Countries Represented by Nonresident Aliens Fall 1992 - Fall 1998

	Fall 1992	1993	1994	1995	1996	1997	1998		Fall 1992	1993	1994	1995	1996	1997	1998
Albania	-	-	-	-	1	-	-	Lebanon	2	2	1	1	1	-	-
Argentina	1	2	2	1	1	-	-	Macao	-	-	-	1	1	-	-
Australia	-	1	2	3	7	5	5	Malaysia	1	2	3	2	-	1	4
Austria	1	1	-	-	-	-	1	Mauritius	1	-	-	-	-	1	1
Bahamas	-	-	-	-	-	-	1	Mexico	8	15	19	15	18	15	9
Bangladesh	1	1	-	-	2	3	4	Moldova	-	-	-	1	-	-	-
Barbados	1	1	-	-	-	-	-	Morocco	-	-	1	-	-	-	-
Belgium	1	-	-	-	-	2	2	Nepal	-	-	-	-	-	-	1
Belize	-	-	-	1	1	3	1	Netherlands	4	3	3	2	3	1	1
Bolivia	1	1	-	-	-	1	-	New Zealand	-	-	-	-	1	1	1
Brazil	5	7	5	1	1	2	1	Nicaragua	-	-	-	-	-	-	1
British Virgin Islands	-	-	-	-	1	1	-	Nigeria	6	5	5	3	3	4	8
Bulgaria	5	4	6	4	5	7	8	North Mariana Isle	-	-	-	-	-	-	2
Byelarus	-	-	1	1	-	-	-	Norway	7	11	8	8	5	5	3
Canada	8	6	8	13	11	12	16	Pakistan	1	1	1	2	5	1	1
Cayman Islands	2	3	1	-	1	2	-	Panama	6	6	7	4	5	5	1
Chile	1	3	5	3	2	2	2	Paraguay	-	1	1	-	-	-	-
China	57	49	43	41	49	56	56	Philippines	3	2	1	-	-	-	1
Columbia	4	4	5	9	6	7	7	Poland	-	-	2	4	4	4	2
Coral Sea Isle Terr.	-	-	-	-	-	-	1	Romania	-	-	-	2	2	5	4
Costa Rica	4	4	4	2	2	3	3	Russia	4	5	4	2	6	3	1
Croatia	-	-	-	-	-	-	1	Rwanda	-	-	1	1	1	-	-
Cyprus	-	-	1	-	-	-	-	Saudi Arabia	-	-	-	1	-	-	-
Czech Republic	-	-	1	2	3	3	3	Senegal	-	-	-	-	-	-	1
Denmark	1	1	-	-	-	-	-	Singapore	6	4	5	3	1	2	2
Ecuador	1	1	-	-	-	-	1	Slovakia	-	1	1	1	1	1	1
El Salvador	1	1	2	-	1	1	-	Slovenia	-	-	-	-	-	-	1

Eritrea	-	-	-	-	1	1	-	South Africa	1	1	3	1	2	3	3
Estonia	1	1	1	1	-	1	-	Soviet Union	-	-	-	-	-	-	1
Ethiopia	4	3	3	-	1	-	-	Spain	3	3	4	5	4	3	2
Finland	1	1	-	1	1	2	1	Sri Lanka	3	4	4	2	2	5	4
France	2	3	12	6	6	4	4	Sudan	1	1	1	1	1	-	-
Germany	5	4	4	4	-	4	3	Sweden	1	-	1	4	4	3	5
Ghana	2	3	-	2	1	1	-	Switzerland	2	2	-	-	1	4	4
Greece	4	3	2	2	-	-	-	Taiwan	21	27	19	16	18	31	29
Guatemala	2	1	1	2	1	-	-	Tanzania	1	1	1	-	-	-	-
Honduras	4	4	4	4	6	7	4	Thailand	6	4	6	6	7	8	5
Hong Kong*	16	17	14	14	11	-	-	Togo	-	-	-	-	1	1	1
Hungary	-	-	-	-	-	2	3	Trinidad/Tobago	1	1	2	2	1	1	-
Iceland	-	-	-	-	-	-	2	Turkey	-	1	1	1	-	-	-
India	20	23	23	15	20	17	21	Uganda	1	1	1	1	1	-	-
Indonesia	8	6	4	4	10	9	11	Ukraine	1	1	1	2	2	1	-
Iran	1	1	-	-	-	-	-	United Arab Emirates	1	1	1	2	1	-	1
Ireland	-	-	-	-	1	-	-	United Kingdom	9	6	5	8	11	7	9
Israel	1	1	-	-	-	-	-	Uzbekistan	-	-	2	3	2	-	-
Italy	1	2	1	2	1	1	-	Venezuela	2	4	5	5	3	4	1
Jamaica	1	2	1	1	-	1	2	Virgina Isle (Brit.)	-	-	-	-	-	-	1
Japan	12	14	14	16	14	11	12	Yemen	1	-	-	-	-	-	-
Jordan	-	-	-	2	-	-	1	Yugoslavia	-	-	-	-	1	1	-
Kazakhstan	1	-	-	-	2	2	-	Zambia	-	-	-	1	1	1	-
Kenya	1	1	3	4	4	3	2	Zimbabwe	-	-	-	2	1	1	-
Korea	8	7	13	14	18	33	21	Total	294	303	306	290	313	332	312

*Beginning Fall 1997, Hong Kong counted in People's Republic of China.

Percentage of Nonresident Aliens, Fall 1992 - Fall 1998



Source: International Programs Report (1992-1998).



Back to Top



Back to Table of Contents

Go to Enrollment by Unit

Last Updated on 3/23/99

By Baylor University (IMTS)

Email: John_Coleman@baylor.edu

Trends 1992 - 1998

Enrollment by Unit

Fall 1992 - Fall 1998

	Fall 1992	1993	1994	1995	1996	1997	1998
College of Arts & Sciences	8,257	6,575	6,433	5,891	5,862	5,718	5,823
School of Business	2,007	2,767	2,798	2,785	2,950	3,059	3,421
School of Education	717	1,550	1,524	1,574	1,604	1,672	1,619
School of Engineering & Computer Sci.	-	-	-	315	348	370	460
School of Music	292	315	337	343	361	365	381
School of Nursing	185	241	444	459	448	426	404
Institutes & Special Studies	176	199	107	133	130	164	183
Graduate School	-	-	-	64	32	48	25
School of Law	422	407	396	394	398	396	401
Truett Seminary	-	-	51	76	123	130	148
College of Dentistry	37	34	41	44	-	-	-
Academy of Health Sciences	92	106	109	124	135	124	122
TOTAL	12,185	12,194	12,240	12,202	12,391	12,472	12,987

Notes:

1. Classification of pre-business majors was modified in Fall 1988, providing for two categories of students: Pre-Business (in Business) and Pre-Business (in Arts and Sciences). Prior to this time all Pre-Business majors were counted in the College of Arts and Sciences. In Fall 1993, the Pre-Business (in Arts & Sciences) category was discontinued, and all Pre-Business students are now counted in the School of Business.

2. In the Fall of 1989 the University School was identified as a unit. In Fall 1992, the University School was abolished. The programs previously housed in the University School (with the exception of Environmental Studies, Gerontology, and Museum Studies) are now housed in "Institutes and Special Studies."

3. Prior to Fall 1993, Pre-Education students were counted in the College of Arts and Sciences. They are now counted in the School of Education.
 4. Prior to Fall 1994, Pre-Nursing students were counted in the College of Arts and Sciences. They are now counted in the School of Nursing.
 5. The School of Engineering & Computer Science was formed in 1995.
 6. Beginning in 1995, the enrollment for the Graduate School reflects students classified as "No Major."
 7. Programs housed in the College of Dentistry were transferred to Texas A&M University in Fall 1996.
-

Source: IMTS


Back to Top

Back to Table of Contents



Go to Enrollment Percentage by Unit

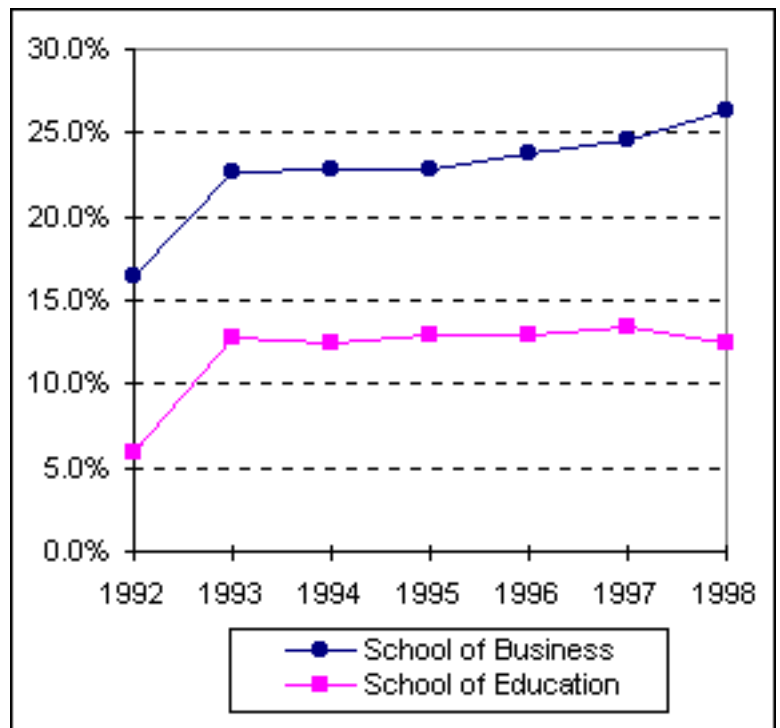
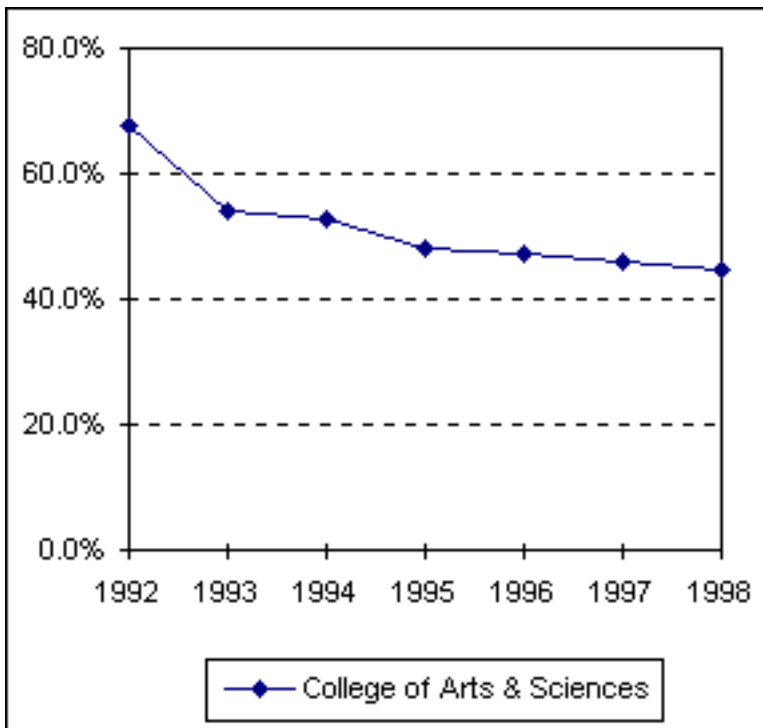
Last Updated on 3/23/99

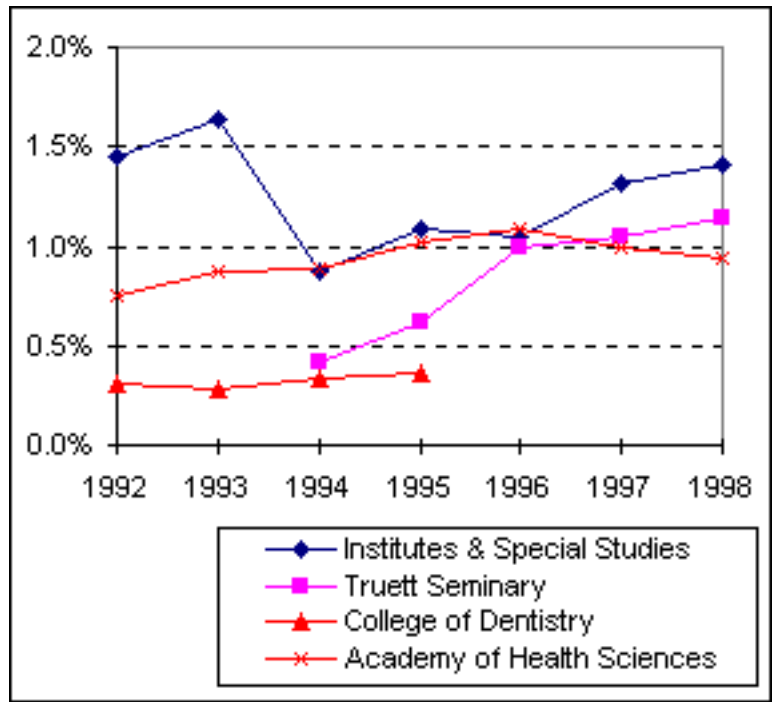
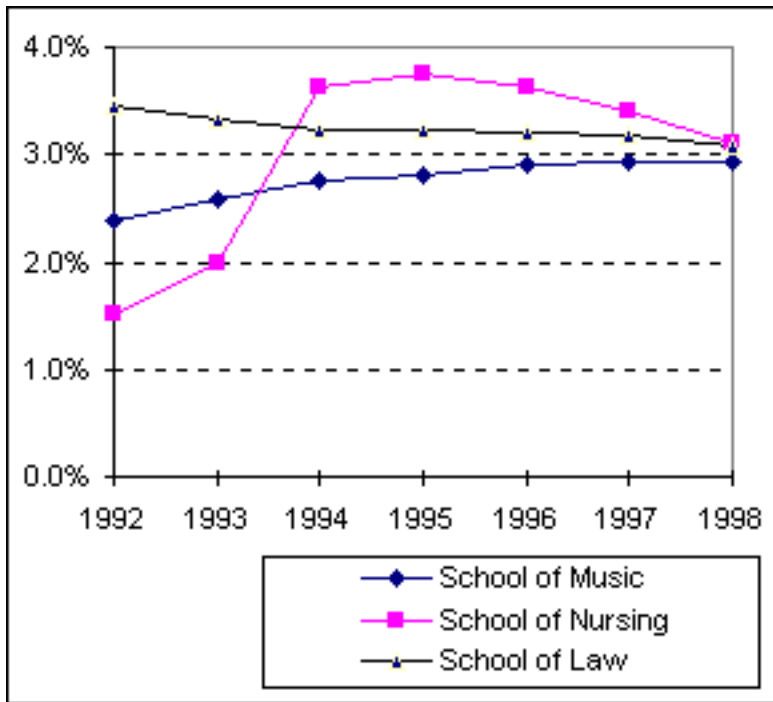
By Baylor University (IMTS)

Email: John_Coleman@baylor.edu

Trends 1992 - 1998

Enrollment Percentage by Unit Fall 1992 - Fall 1998





	Fall	1992	1993	1994	1995	1996	1997	1998
College of Arts & Sciences		67.8%	53.9%	52.6%	48.3%	47.3%	45.8%	44.8%
School of Business		16.5%	22.7%	22.9%	22.8%	23.8%	24.5%	26.3%
School of Education		5.9%	12.7%	12.5%	12.9%	12.9%	13.4%	12.5%
School of Engineering & Computer Sci.					2.6%	2.8%	3.0%	3.5%
School of Music		2.4%	2.6%	2.8%	2.8%	2.9%	2.9%	2.9%
School of Nursing		1.5%	2.0%	3.6%	3.8%	3.6%	3.4%	3.1%
Institutes & Special Studies		1.4%	1.6%	0.9%	1.1%	1.0%	1.3%	1.4%
Graduate School					0.5%	0.3%	0.4%	0.2%
School of Law		3.5%	3.3%	3.2%	3.2%	3.2%	3.2%	3.1%
Truett Seminary				0.4%	0.6%	1.0%	1.0%	1.1%
College of Dentistry		0.3%	0.3%	0.3%	0.4%			
Academy of Health Sciences		0.8%	0.9%	0.9%	1.0%	1.1%	1.0%	0.9%

[See Notes](#)

Source: IMTS



Back to Top



Back to Table of Contents

Go to Student Credit Hours by Unit, Waco Campus

Last Updated on 3/23/99

By Baylor University (IMTS)

Email: John_Coleman@baylor.edu

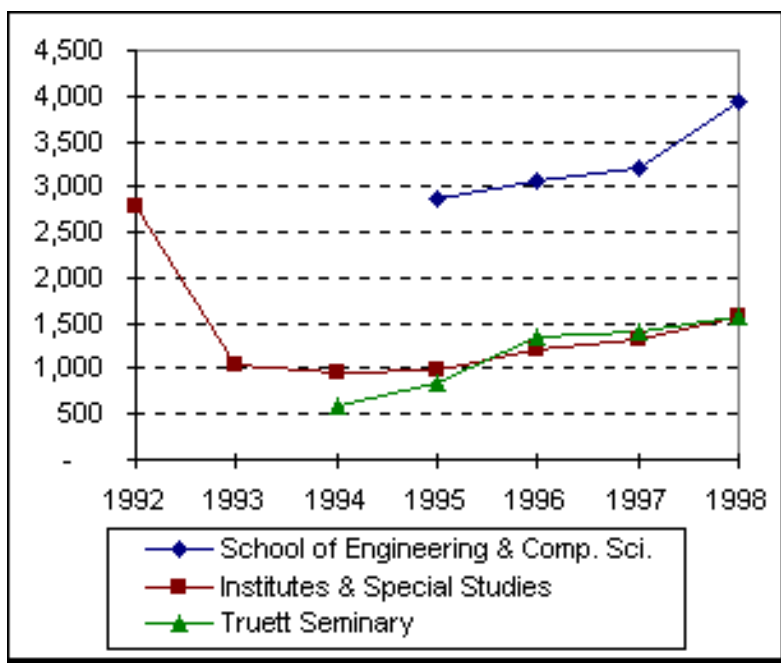
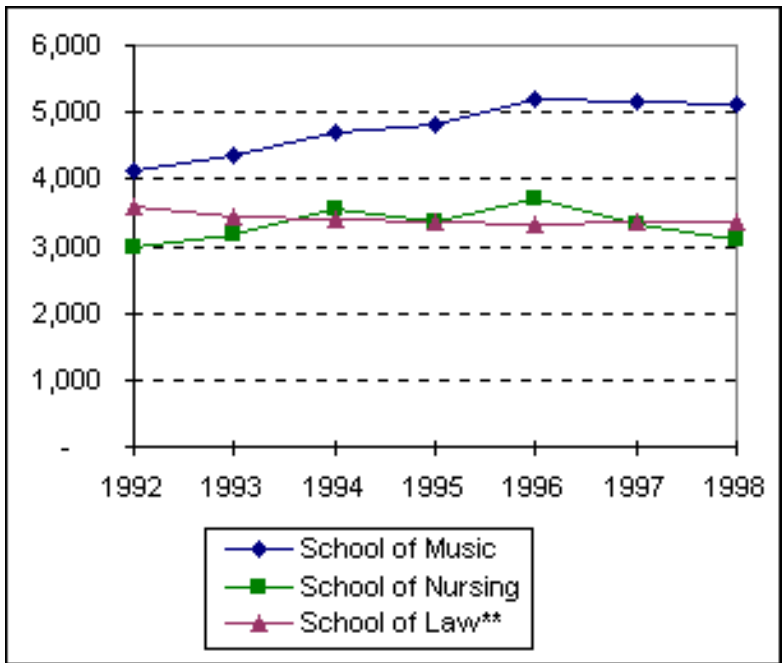
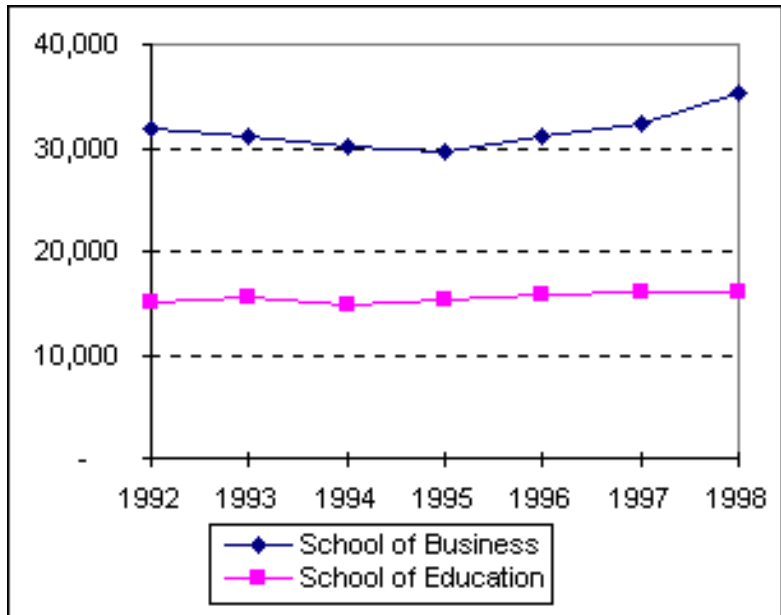
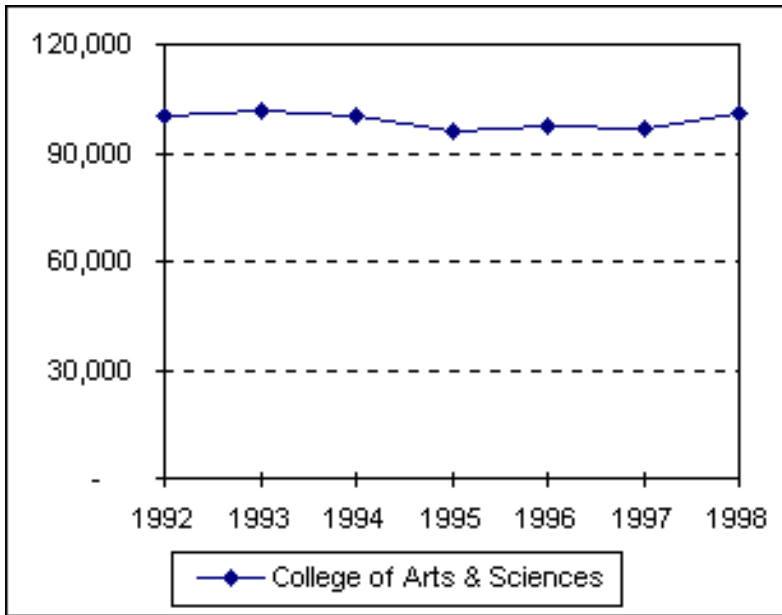
Trends 1992 - 1998

Student Credit Hours by Unit*

Waco Campus

Fall 1992 - Fall 1998

	Fall	1992	1993	1994	1995	1996	1997	1998
College of Arts & Sciences		100,586	101,633	100,562	96,348	97,393	97,007	100,794
School of Business		31,795	31,189	30,244	29,697	31,037	32,418	35,429
School of Education		15,110	15,609	14,897	15,243	15,793	15,934	15,930
School of Engineering & Comp. Sci.					2,870	3,067	3,218	3,938
School of Music		4,112	4,358	4,714	4,818	5,197	5,147	5,123
School of Nursing		2,999	3,173	3,539	3,381	3,693	3,337	3,089
Institutes & Special Studies		2,786	1,035	961	989	1,217	1,316	1,576
School of Law**		3,575	3,426	3,397	3,356	3,330	3,353	3,353
Truett Seminary				593	841	1,351	1,420	1,568
TOTAL		160,963	160,423	158,907	157,543	162,078	163,150	170,800



* See Notes

**Quarter hours converted to semester hours.

Source: IMTS



Back to Top



Back to Table of Contents

Go to Retention of First - Time Freshman Classes

Last Updated on 3/24/99

By Baylor University (IMTS)


Email: John_Coleman@baylor.edu

Trends 1992 - 1998

Retention of First-Time Freshman Classes Entering Fall 1987 - Fall 1997

First-Time																
Freshman	After 1 year		After 2 years		After 3 years			After 4 years			After 5 years			After 6 years		
Class of:	Cont.	Drop.	Cont.	Drop.	Cont.	Drop.	Grad.	Cont.	Drop.	Grad.	Cont.	Drop.	Grad.	Cont.	Drop.	Grad.
1987	85.0%	15.0%	75.6%	24.4%	71.7%	27.1%	1.2%	24.2%	28.2%	47.6%	3.4%	28.3%	68.3%	1.1%	28.2%	70.7%
1988	84.0%	16.0%	75.5%	24.5%	72.5%	26.5%	1.0%	29.8%	28.3%	41.9%	3.3%	28.5%	68.2%	0.8%	27.9%	71.3%
1989	85.7%	14.3%	74.8%	25.2%	71.2%	27.7%	1.1%	28.3%	28.9%	42.8%	3.9%	28.9%	67.2%	1.2%	28.8%	70.0%
1990	84.1%	15.9%	73.0%	27.0%	69.8%	29.0%	1.2%	28.1%	29.6%	42.3%	4.2%	31.2%	64.6%	1.6%	29.4%	69.0%
1991	84.0%	16.0%	74.5%	25.5%	70.7%	28.2%	1.1%	26.5%	29.6%	43.9%	3.8%	29.5%	66.7%	1.3%	29.0%	69.7%
1992	81.9%	18.1%	71.5%	28.5%	67.2%	31.5%	1.4%	28.3%	32.4%	39.3%	4.8%	32.0%	63.2%	1.0%	34.3%	64.7%
1993	81.6%	18.4%	72.0%	28.0%	68.4%	30.4%	1.2%	27.5%	32.3%	40.2%	4.5%	32.3%	63.2%			
1994	82.2%	17.8%	72.3%	27.7%	68.5%	30.1%	1.4%	27.0%	31.1%	41.9%						
1995	82.9%	17.1%	76.0%	24.0%	71.4%	27.2%	1.4%									
1996	83.4%	16.6%	74.6%	25.4%												
1997	82.2%	17.8%														
Average	83.4%	16.6%	74.0%	26.0%	70.2%	28.6%	1.2%	27.5%	30.1%	42.5%	4.0%	30.1%	65.9%	1.2%	29.6%	69.2%

Source: IMTS


Back to Top

Back to Table of Contents



Go to Distribution of Degrees

Last Updated on 3/24/99

By Baylor University (IMTS)

Email: John_Coleman@baylor.edu

Trends 1992 - 1998

Distribution of Degrees* 1992-93 through 1997-98

	1992-93	1993-94	1994-95	1995-96	1996-97	1997-98
Bachelor of:						
Arts	1041	1044	1021	975	927	880
Business Administration	770	800	708	679	816	897
Fine Arts	23	17	31	18	22	17
Music	20	34	18	18	24	29
Music Education	19	13	18	18	20	23
Bachelor of Science:						
Science	144	120	128	105	141	147
Aviation Sciences			2	6	4	8
Computer Science				18	16	19
Education	327	369	316	330	382	355
Engineering	29	18	30	29	21	21
Engineering Science		1				
Family & Consumer Sciences	58	54	47	51	51	38
Nursing	100	90	123	112	102	106
TOTAL BACHELOR DEGREES	2531	2560	2442	2359	2526	2540
Master of:						
Accountancy						4
Arts	62	89	85	75	87	74
Business Administration	149	100	137	108	117	106
Business Admin. in International Management	1	5	4	1	5	1
Christian Theology				1	1	
Clinical Gerontology	7	9	10	3	4	5
Divinity					33	13
Environmental Studies	4	4	3	3	6	2
Fine Arts		1	1	1	2	
Health Administration	52	30	46	43	51	66
International Journalism	9	18	7	1	1	2
International Management	5	9	7	4	2	1
Music	10	25	28	21	26	23
Physical Therapy	20	21	24	23	24	18
Public Policy and Administration	4	10	7	10	1	7

Science	32	44	46	43	47	41
Taxation	20	10	16	15	9	7
Master of Science in:						
Clinical Psychology					20	8
Communication Sciences & Disorders	27	29	25	28	33	38
Dentistry	13	25	10			
Economics	4	6	0	3	3	5
Education	75	91	74	68	65	69
Gerontology	7	7	13	9	9	8
Limnology			1		3	1
Nursing	1	3	1	1	1	11
TOTAL MASTER'S DEGREES	502	536	545	461	550	510
TOTAL JURIS DOCTOR DEGREES	175	150	157	143	168	123
Doctor of:						
Education	13	18	12	22	15	17
Philosophy	15	19	25	19	19	13
Psychology	7	11	10	10	6	11
TOTAL DOCTORAL DEGREES	35	48	47	51	40	41
TOTAL DEGREES AWARDED	3243	3294	3191	3014	3284	3214

*Degree information on this page is reported beginning with the Fall semester and including the following Spring and Summer terms. An individual graduate with multiple majors is counted as a whole graduate in each major area of study (i.e., duplicated count).

Source: Statistical Report: "Statistics on Enrollment and Degrees Awarded"


Back to Top

Back to Table of Contents



Go to Summary of Degrees Awarded

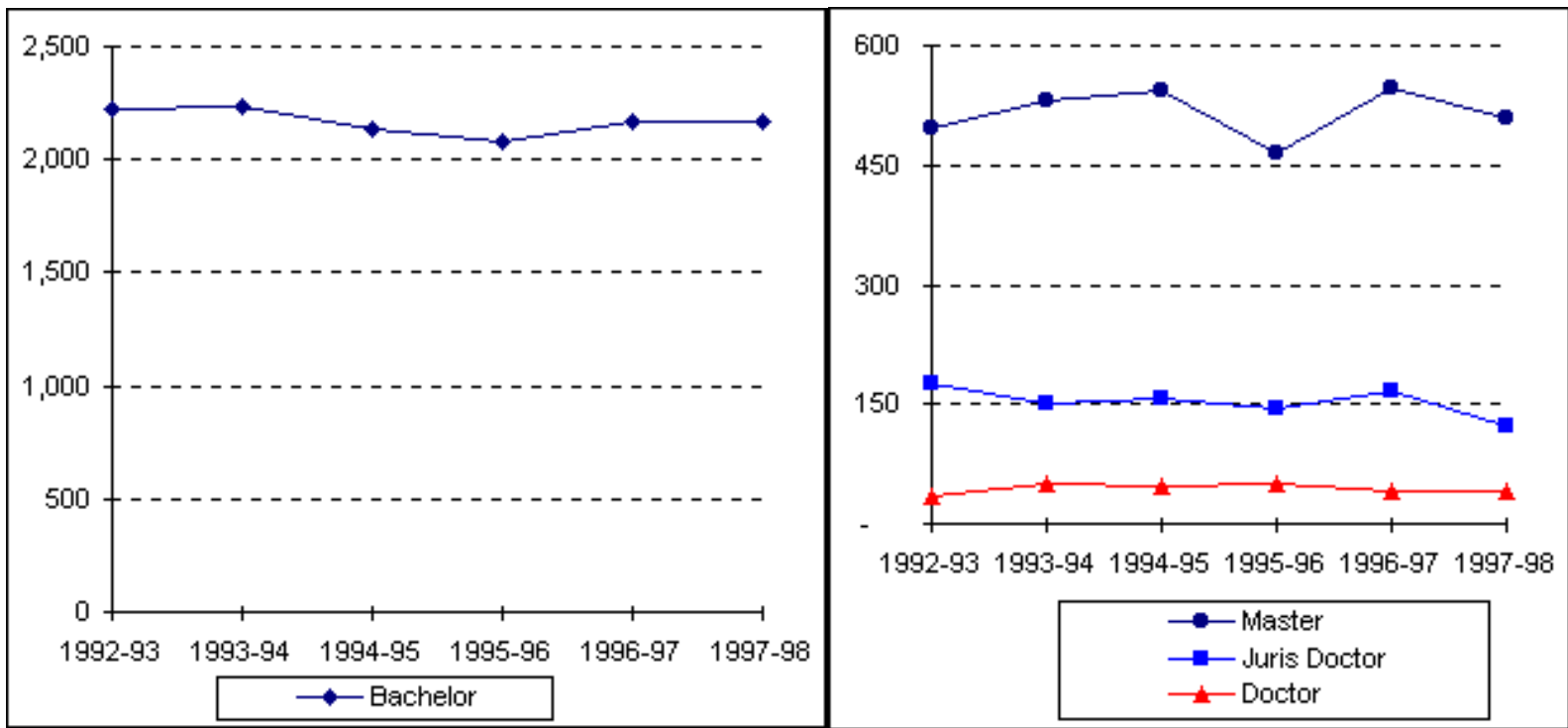
Last Updated on 3/24/99

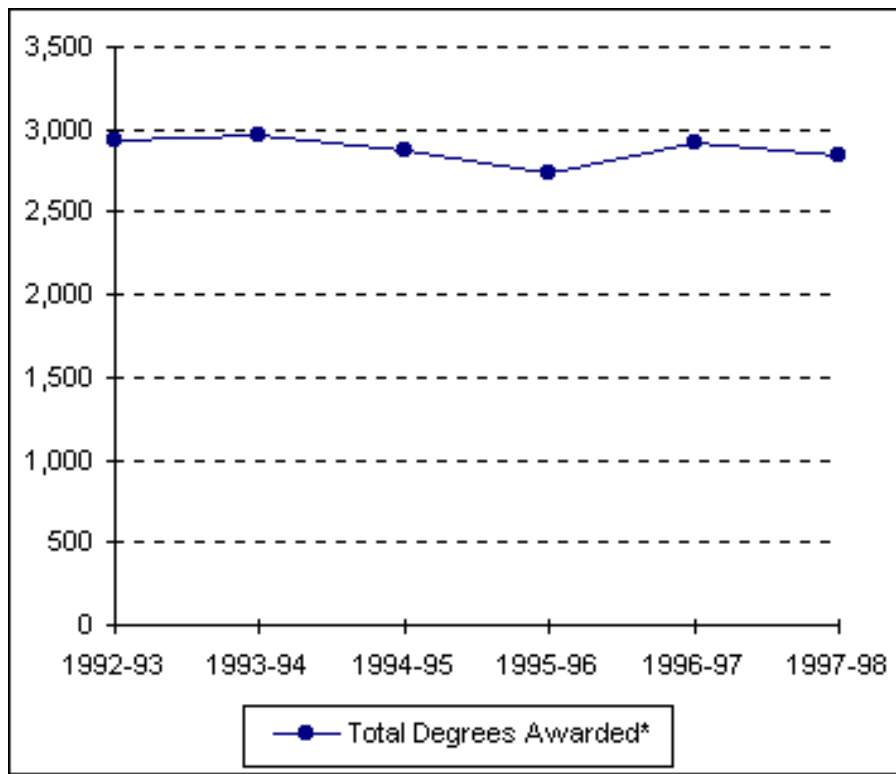
By Baylor University (IMTS)

Email: John_Coleman@baylor.edu

Trends 1992 - 1998

Summary of Degrees Awarded* 1992-93 through 1997-98





Degree Level:	1992-93	1993-94	1994-95	1995-96	1996-97	1997-98
Bachelor	2,228	2,229	2,132	2,075	2,170	2,169
Master	495	531	544	465	548	510
Juris Doctor	175	150	157	143	168	123
Doctor	35	51	47	51	40	41
Total Degrees Awarded*	2,933	2,961	2,880	2,734	2,926	2,843

*The information on this page indicates the number of degree recipients (i.e., unduplicated count). Degree information on this page is reported beginning with the Fall semester and including the following Spring and Summer terms.

Source: Statistical Report: "Statistics on Enrollment and Degrees Awarded"



Back to Top



Back to Table of Contents

Go to Degree Programs

Last Updated on 3/24/99

By Baylor University (IMTS)

Email: John_Coleman@baylor.edu

Trends 1992 - 1998

Degree Programs (as of January 1999)

Accounting (BBA)	Communication Sci. & Disorders (MSCSD)	Fashion Merchandising (BA)
Accounting (MAcc)	Communication Specialist (BA)	Fashion Merchandising (BSFCS)
Administrative Information Systems (BBA)	Communication Studies (MA)	Finance (BBA)
American Studies (BA)	Community Health (BSEd)	Financial Services / Planning (BBA)
American Studies (MA)	Composition (BM)	Forestry (BA)
Anthropology (BA)	Composition (MM)	Forestry (BS)
Applied Mathematics (BS)	Computer Information Systems (BBA)	French (BA)
Applied Music (BM)	Computer Information Systems-CIS (BSEd)	French (BSEd)
Applied Sociology (PhD)	Computer Information Systems-ISY (BSEd)	General Family & Consumer Sci. (BA)
Archaeology (BA)	Computer Science (BA)	General Family & Consumer Sci. (BSFCS)
Architecture (BA)	Computer Science (BSCS)	General Studies in HHPR (BSEd)
Art (BFA)	Computer Science (MS)	Generic Special Education (BSEd)
Art (BSEd)	Conducting (MM)	Geology (BS)
Art History (BA)	Curriculum & Instruction (MA)	Geology (MS)
Asian Studies (BA)	Curriculum & Instruction (MSEd)	Geology (PhD)
Aviation Sciences (BSAvSc)	Curriculum & Instruction (EdS)	Geophysics (BS)
Basic Business (BBA)	Curriculum & Instruction (EdD)	German (BA)
Biblical & Related Languages (BA)	Dentistry (BA)	German (BSEd)
Biochemistry (BA)	Dentistry (BS)	Gerontology (MSG)
Biochemistry (BS)	Design (BFA)	Greek (BA)
Biology (BA)	Directing (MFA)	Health (BSEd)
Biology (BS)	Earth Science (BA)	Health Care Administration (MHA)
Biology (BSEd)	Earth Science (BSEd)	Health / Fitness Studies (BSEd)
Biology (MA)	Earth Science (MA)	Health, Human Performance & Recreation (MSEd)

Biology (MS)	Economics (BA)	Health Science Studies (BSEd)
Biology (PhD)	Economics (BBA)	History (BA)
Biomedical Studies (MS)	Economics (BS)	History (BSEd)
Biomedical Studies (PhD)	Economics (BSEd)	History (MA)
Business Administration (BA)	Economics (MSEco)	Human Performance (BSEd)
Business Administration (BSEd)	Education (MA)	Human Resources Management (BBA)
Business Administration (MBA)	Educational Administration (MA)	Informatics (BSI)
Business - Broadcasting (BBA)	Educational Administration (MSEd)	Information Systems Management (MBA)
Business - Journalism (BBA)	Educational Administration (EdS)	Information Systems (MSIS)
Chemistry (BA)	Educational Administration (EdD)	Instrumental Music (BME)
Chemistry (BS)	Educational Psychology (MA)	Interdisciplinary Studies (BSEd)
Chemistry (BSEd)	Educational Psychology (MSEd)	Interior Design (BA)
Chemistry (MS)	Educational Psychology (EdS)	Interior Design (BSFCS)
Chemistry (PhD)	Educational Psychology (PhD)	International Business (BBA)
Child & Family Studies (BA)	Engineering (BSE)	International Economics (MA)
Child & Family Studies (BSFCS)	English (BA)	International Economics (MS)
Choral Music (BME)	English (BSEd)	International Journalism (MIJ)
Church Music (BM)	English (MA)	International Management (MBA)
Church Music (MM)	English (PhD)	International Management (MBAIM)
Church Recreation (BSEd)	Entrepreneurship (BBA)	International Management (MIM)
Church-State Studies (MA)	Environmental Biology (MS)	International Relations (MA)
Church-State Studies (PhD)	Environmental Studies (BA)	International Studies (BA)
Classics (BA)	Environmental Studies (BS)	Journalism (BA)
Clinical Gerontology (MCG)	Environmental Studies (MES)	Journalism (BSEd)
Clinical Psychology (MSCP)	Environmental Studies (MS)	Journalism (MA)
Clinical Psychology (PsyD)	Family Nurse Practitioners (MSN)	Language and Linguistics (BA)
Communication Disorders (MA)	Fashion Design (BA)	Latin American Studies (BA)
Communication Sci. & Disorders (MA)	Fashion Design (BSFCS)	Latin (BA)
Latin (BSEd)	Political Science (MA)	
Law (BA)	Professional Writing (BA)	
Law (BBA)	Psychology (BA)	

Law (JD)	Psychology (BS)
Life - Earth Science (BSEd)	Public Administration (BBA)
Limnology (MSL)	Public Policy & Administration (MPPA)
Management (BBA)	Quantitative Business Analysis (BBA)
Marketing (BBA)	Reading (BSEd)
Mathematics (BA)	Real Estate (BBA)
Mathematics (BS)	Recreation (BSEd)
Mathematics (BSEd)	Regional / Urban Studies (BBA)
Mathematics (MS)	Religion (BA)
Medical Technology & Biology (BS)	Religion (MA)
Medicine (BA)	Religion (PhD)
Medicine (BS)	Risk Management and Insurance (BBA)
Museum Studies (BA)	Russian (BA)
Museum Studies (BS)	Science (BSEd)
Museum Studies (MA)	Slavic and East European Studies (BA)
Music (BA)	Social Studies (BSEd)
Music Education (MM)	Social Work (BA)
Music History & Literature (BM)	Social Work (MSW)
Music History & Literature (MM)	Sociology (BA)
Music Theory (MM)	Sociology (BSEd)
Neonatal Nurse Practitioner (MSN)	Sociology (MA)
Neuroscience (BS)	Spanish (BA)
Neuroscience (MA)	Spanish (BSEd)
Neuroscience (PhD)	Spanish (MA)
Nursing (BSN)	Speech Communication (BA)
Nutrition Sciences (BA)	Speech Communications (BSEd)
Nutrition Sciences (BS)	Speech & Language Therapy (BSEd)
Nutrition Sciences (BSFCS)	Statistics (MA)
Operations Management (BBA)	Statistics (PhD)
Optometry (BA)	Studio Art (BA)
Optometry (BS)	Studio Art (BFA)
Patient Care Management (MSN)	Taxation (MT)
Pedagogy (BM)	Telecommunication (BA)

Performance (BFA)	Theater Arts (BA)
Performance (MM)	Theater Arts (BSEd)
Philosophy (BA)	Theater Arts (MA)
Philosophy (MA)	Theology (MDiv)
Physical Science (BSEd)	Theory (BM)
Physical Therapy (MPT)	University Scholars (BA)
Physics (BA)	
Physics (BS)	
Physics (BSEd)	
Physics (MA)	
Physics (MS)	
Physics (PhD)	
Piano Accompanying (MM)	
Piano Pedagogy & Performance (MM)	
Political Science (BA)	
Political Science (BSEd)	

Source: IMTS



Back to Top



Back to Table of Contents

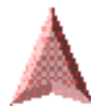
*Last Updated on 3/24/99
By Baylor University (IMTS)
Email: John_Coleman@baylor.edu*

Trends 1992 - 1998

Full-Time Faculty Positions Fall 1992 - Fall 1998

Rank	Fall 1992		Fall 1993		Fall 1994		Fall 1995		Fall 1996		Fall 1997		Fall 1998	
	Male	Female	Male	Female	Male	Female	Male	Female	Male	Female	Male	Female	Male	Female
Professors:														
Number	188	27	197	29	194	27	199	33	198	33	201	34	205	35
Tenured	179	27	189	29	187	27	190	31	190	30	194	32	198	35
Associate Prof.:														
Number	89	35	91	40	93	43	87	41	82	41	84	43	89	46
Tenured	75	25	73	30	79	34	76	32	67	34	68	37	78	38
Assistant Prof:														
Number	59	53	53	50	59	53	68	49	71	51	67	55	73	52
Tenured	3	12	4	9	3	10	2	7	3	5	3	7	2	7
Instructors:														
Number	3	4	4	3	1	2	0	2	0	2	0	2	0	1
Tenured	0	1	0	1	0	1	0	1	0	1	0	1	0	1
Lecturers:														
Number	57	74	59	75	51	76	45	76	55	73	47	73	50	78
Total														
Number	396	193	404	197	398	201	399	201	406	200	399	207	417	212
Total Tenured	257	65	266	69	269	72	268	71	260	70	265	77	278	81

Source: AAUP, IMTS



Back to Top



Back to Table of Contents

Go to Highest Degree Earned by Full - Time Faculty

Last Updated on 3/25/99

By Baylor University (IMTS)

Email: John_Coleman@baylor.edu

Trends 1992 - 1998

Highest Degree Earned by Full-Time Faculty Fall 1992 - Fall 1998

	Fall 1992	Fall 1993	Fall 1994	Fall 1995	Fall 1996	Fall 1997	Fall 1998
Bachelor's	1	1	0	0	0	1	1
Master's	161	137	141	141	135	138	145
Doctoral	408	439	437	438	449	448	463
Professional	19	24	21	21	22	19	20
Total	589	601	599	600	606	606	629

Source: AAUP, IMTS


Back to Top

Back to Table of Contents



Go to Percentage of Full - Time Faculty with Tenure

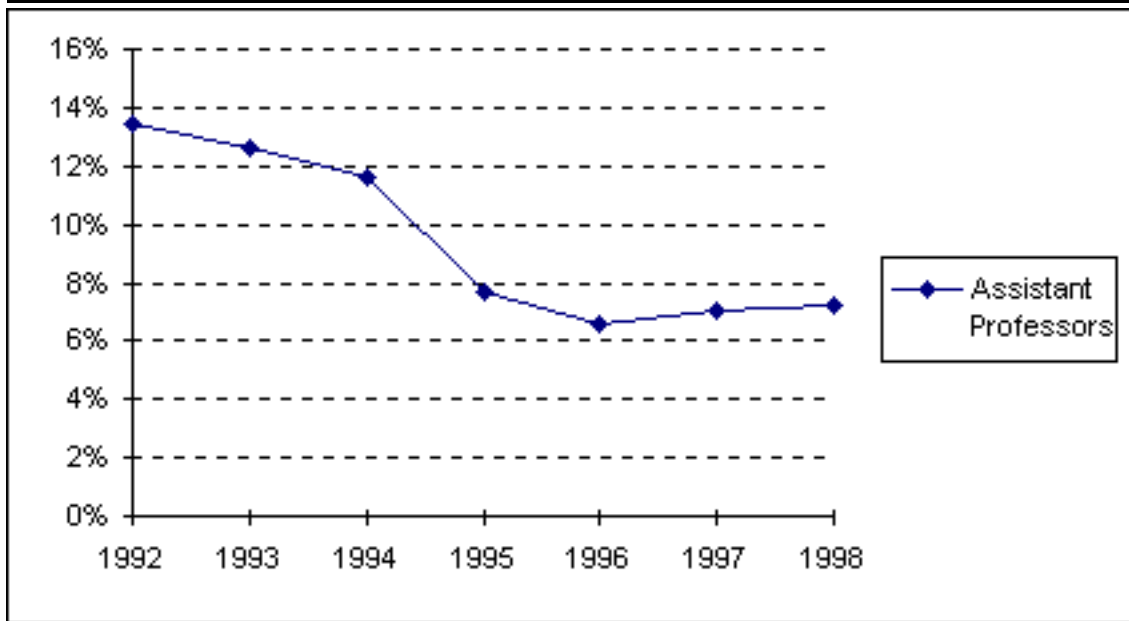
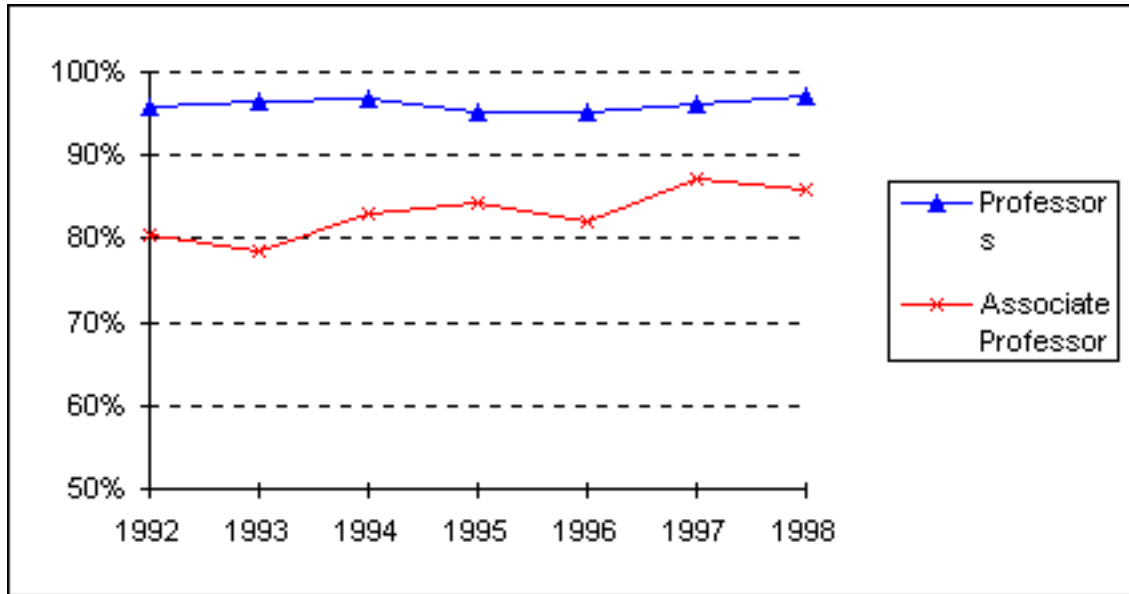
Last Updated on 3/25/99

By Baylor University (IMTS)

Email: John_Coleman@baylor.edu

Trends 1992 - 1998

Percentage of Full - Time Faculty with Tenure
Fall 1992 - Fall 1998



	Fall 1992	1993	1994	1995	1996	1997	1998
Professors	95.8%	96.5%	96.8%	95.3%	95.2%	96.2%	97.1%
Associate Professors	80.6%	78.6%	83.1%	84.4%	82.1%	87.1%	85.9%

Assistant Professors	13.4%	12.6%	11.6%	7.7%	6.6%	7.0%	7.2%
Instructors	14.3%	14.3%	33.3%	50.0%	50.0%	50.0%	100.0%
All Faculty	54.7%	55.7%	56.9%	56.5%	54.5%	56.9%	57.1%

Source: AAUP, IMTS



Back to Top



Back to Table of Contents

**Go to Average Compensation of Full - Time
Instructional
Faculty on Academic Year Contracts**

Last Updated on 3/25/99

By Baylor University (IMTS)

Email: John_Coleman@baylor.edu

Trends 1992 - 1998

Average Salaries of Full-Time Instructional Faculty on Academic Year Contracts Fall 1992 - Fall 1998

Rank	Fall 1992		Fall 1993		Fall 1994		Fall 1995	
	Number in Rank	Average Salary	Number in Rank	Average Salary	Number in Rank	Average Salary	Number in Rank	Average Salary
Professor	215	\$59,452	226	\$61,864	221	\$63,599	232	\$65,450
Associate Professor	124	\$45,317	131	\$47,360	136	\$49,235	128	\$51,041
Assistant Professor	112	\$38,862	103	\$39,681	112	\$40,100	117	\$41,448
Instructor	7	\$33,555	7	\$34,609	3	\$43,662	2	*
Lecturer	131	\$29,072	134	\$30,671	127	\$30,984	121	\$32,504
All Ranks	589	\$45,496	601	\$47,629	599	\$48,929	600	\$50,958
Average Fringe		\$11,513		\$13,118		\$13,657		\$13,324
Fringe as a Percentage of								
Average Salary		25.3%		27.5%		27.9%		26.1%
Percentage Increase in Average Salary for Continuing Faculty		0.3%		5.3%		5.3%		5.2%
Rank	Fall 1996		Fall 1997		Fall 1998			
	Number in Rank	Average Salary	Number in Rank	Average Salary	Number in Rank	Average Salary		
Professor	231	\$67,094	235	\$70,565	240	\$73,937		
Associate Professor	123	\$51,427	127	\$54,382	135	\$56,977		
Assistant Professor	122	\$41,259	122	\$42,459	125	\$44,193		
Instructor	2	*	2	*	1	*		
Lecturer	128	\$32,473	120	\$35,127	128	\$36,420		
All Ranks	606	\$51,292	606	\$54,386	629	\$56,707		
Average Fringe		\$13,503		\$14,416		\$15,140		

Fringe as a Percentage
of

Average Salary	26.3%	26.5%	26.7%
----------------	-------	-------	-------

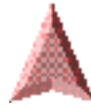
Percentage Increase in

Average Salary for

Continuing Faculty	3.3%	6.7%	4.6%
--------------------	------	------	------

*Data not displayed for two or less faculty.

Source: AAUP



Back to Top



Back to Table of Contents

**Go to Average Compensation of Full - Time
Instructional
Faculty on Academic Year Contracts**

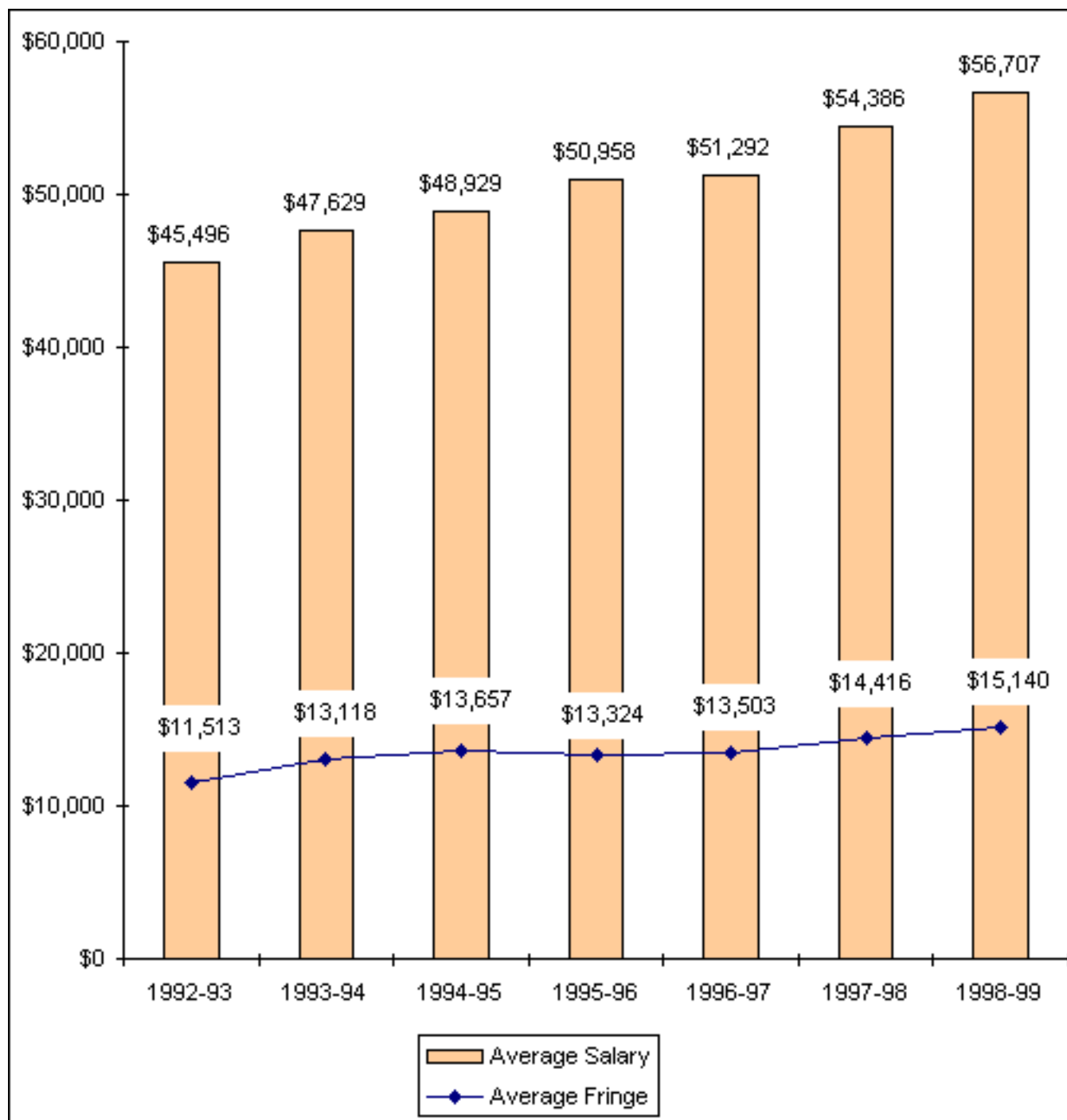
Last Updated on 3/25/99

By Baylor University (IMTS)

Email: John_Coleman@baylor.edu

Trends 1992 - 1998

Average Compensation of Full-Time Instructional Faculty on Academic Year Contracts 1992-93 through 1998-99



Source: AAUP



Back to Top



Back to Table of Contents

Go to Insitutional Staff

Last Updated on 3/25/99

By Baylor University (IMTS)

Email: John_Coleman@baylor.edu

Trends 1992 - 1998

Institutional Staff								
Fall 1992 - Fall 1998								
		Fall 1992	1993	1994	1995	1996	1997	1998
Faculty:								
Full-Time		589	601	599	600	606	596	619
Part-Time		47	66	56	79	58	49	86
Chief Administrators		6	6	14	14	14	16	15
Other Administrators:								
Full-Time		22	21	62	60	60	90	95
Part-Time							1	
Professional (Non-Academic):								
Full-Time		35	36	18	18	18	42	38
Part-Time		2	2	2	2	3	0	0
Salaried Staff:								
Full-Time		353	338	348	371	424	440	455
Part-Time		18	16	10	15	18	22	21
Hourly Staff:								
Full-Time		392	298	288	275	288	292	310
Part-Time		43	53	61	56	66	74	74
Total		1507	1437	1458	1490	1555	1622	1713

Source: ICUT


Back to Top

Back to Table of Contents



Go to Percentage of Institutional Staff

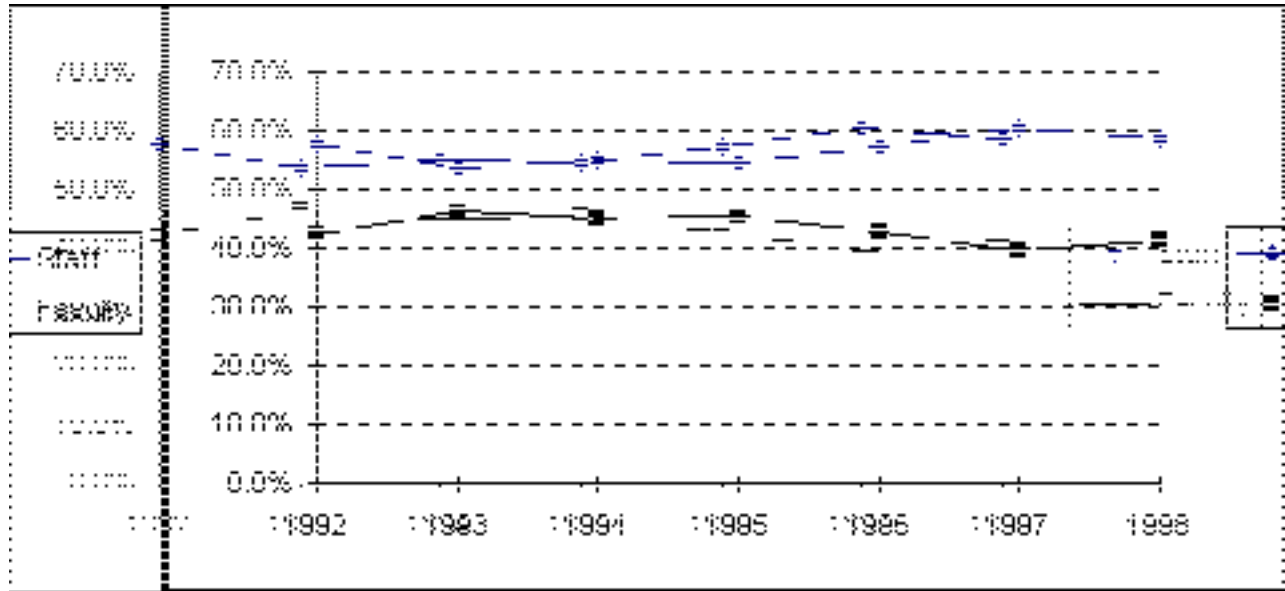
Last Updated on 3/25/99

By Baylor University (IMTS)

Email: John_Coleman@baylor.edu

Trends 1992 - 1998

Percentage of Institutional Staff Fall 1992 - Fall 1998



	Fall 1992	1993	1994	1995	1996	1997	1998
Staff	57.8%	53.6%	55.1%	54.4%	57.3%	60.2%	58.8%
Faculty	42.2%	46.4%	44.9%	45.6%	42.7%	39.8%	41.2%

Source: ICUT


Back to Top

Back to Table of Contents



Go to Faculty by Religious Affiliation

Last Updated on 3/25/99

By Baylor University (IMTS)


Email: John_Coleman@baylor.edu

Trends 1992 - 1998

Faculty by Religious Affiliation Fall 1992 - Fall 1998

	Fall 1992	1993	1994	1995	1996	1997	1998
Assembly of God	3	1	1	1	1	1	0
Baptist	305	304	309	306	302	294	279
Catholic	40	37	42	44	47	46	50
Church of Christ	14	13	12	13	12	16	15
Disciples of Christ	16	12	15	16	16	16	16
Episcopalian	37	40	39	38	40	45	45
Lutheran	32	35	35	36	38	34	34
Methodist	69	67	66	68	71	71	68
Non-Denominational	n/a	n/a	9	10	9	10	11
Presbyterian	47	40	44	39	40	40	39
Other / Unspecified	26	52	27	29	30	33	72
Total	589	601	599	600	606	606	629

Source: IMTS


Back to Top

Back to Table of Contents



Go to Staff by Religious Affiliation

Last Updated on 3/25/99

By Baylor University (IMTS)

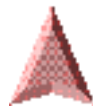
Email: John_Coleman@baylor.edu

Trends 1992 - 1998

Staff by Religious Affiliation Fall 1992 - Fall 1998

	Fall 1992	1993	1994	1995	1996	1997	1998
Assembly of God	9	4	4	4	4	6	5
Baptist	448	408	433	448	475	507	493
Catholic	64	58	62	63	63	73	76
Church of Christ	29	24	21	24	24	25	26
Disciples of Christ	19	19	23	19	21	19	17
Episcopalian	21	19	19	20	15	17	17
Lutheran	28	26	25	29	29	30	27
Methodist	80	73	72	80	80	83	90
Non-Denominational	n/a	n/a	9	9	9	13	13
Presbyterian	6	6	8	11	12	13	17
Other / Unspecified	61	46	57	49	56	57	96
Total	765	683	733	756	788	843	877

Source: IMTS



Back to Top



Back to Table of Contents

Last Updated on 3/25/99

By Baylor University (IMTS)

Email: John_Coleman@baylor.edu

Trends 1992 - 1998

Tuition and Other Semester Charges 1992-93 through 1998-99

	1992-93	1993-94	1994-95	1995-96	1996-97	1997-98	1998-99
Tuition per Semester Hour	\$200.00	\$215.00	\$232.00	\$258.00	\$269.00	\$288.00	\$308.00
Increase from Prior Year	8.1%	7.5%	7.9%	11.2%	4.3%	7.1%	6.9%
Application Fee	20.00	25.00	25.00	25.00	25.00	25.00	35.00
Applied Music Fee(1)	65.00	70.00	75.00	75.00	85.00	90.00	96.00
Change-of-Course Fee	20.00	20.00	20.00	20.00	20.00	20.00	20.00
Chapel-Forum Fee	10.00	10.00	10.00	10.00	10.00	10.00	15.00
Credit by Baylor Exam Fee	100.00	107.50	116.00	129.00	134.50	144.00	154.00
General Student Fee (2)	270.00	285.00	300.00	320.00	335.00	385.00	427.00
General University Deposit (3)	100.00	100.00	100.00	100.00	100.00	100.00	100.00
Lab/Course Fees (4)	25.00	25.00	25.00	25.00	25.00	25.00	25.00
Late Registration Fee (5)	20.00	20.00	20.00	20.00	20.00	20.00	20.00
Student Life Fee			1.00	1.00	1.00	1.00	1.00
Technology Fee							85.00
Vehicle Registration Fee (6)	65.00	70.00	70.00	70.00	90.00	95.00	95.00
Room	820.00	845.00	870.00	895.00	922.00	950.00	979.00
Increase from Prior Year	3.1%	3.0%	3.0%	2.9%	3.0%	3.0%	3.1%
Board (7)	1,000.00	1,030.00	1,060.00	1,085.00	1,113.00	1,170.00	1,205.00
Increase from Prior Year	4.7%	3.0%	2.9%	2.4%	2.6%	5.1%	3.0%

Notes:

- (1) Supplemental charge per semester for one 30-minute lesson per week.
 - (2) Effective June 1, 1986, General Student Fee replaced Health, Legal Advisor, Recreation/Activity/Sport and other specific student service fees. Effective June 1, 1987, fee includes Information Systems Fee and Facilities Use and Development Fee.
 - (3) In 1998, the General University Deposit became an Enrollment Deposit. The Enrollment Deposit is paid to assure enrollment place and is applied on the student's first semester bill.
 - (4) Fees for certain courses may be higher. Also, various science courses require deposits.
 - (5) Effective June 1, 1989, fee is graduated: \$20.00 first through third class days, \$30.00 fourth through tenth class days, \$50.00 eleventh class day and after.
 - (6) Annual automobile fee (September - August).
 - (7) Twenty meal plan, per semester, not including sales tax.
-

Source: Controller's Office



Back to Top



Back to Table of Contents

Go to Tuition, Room and Board Charges

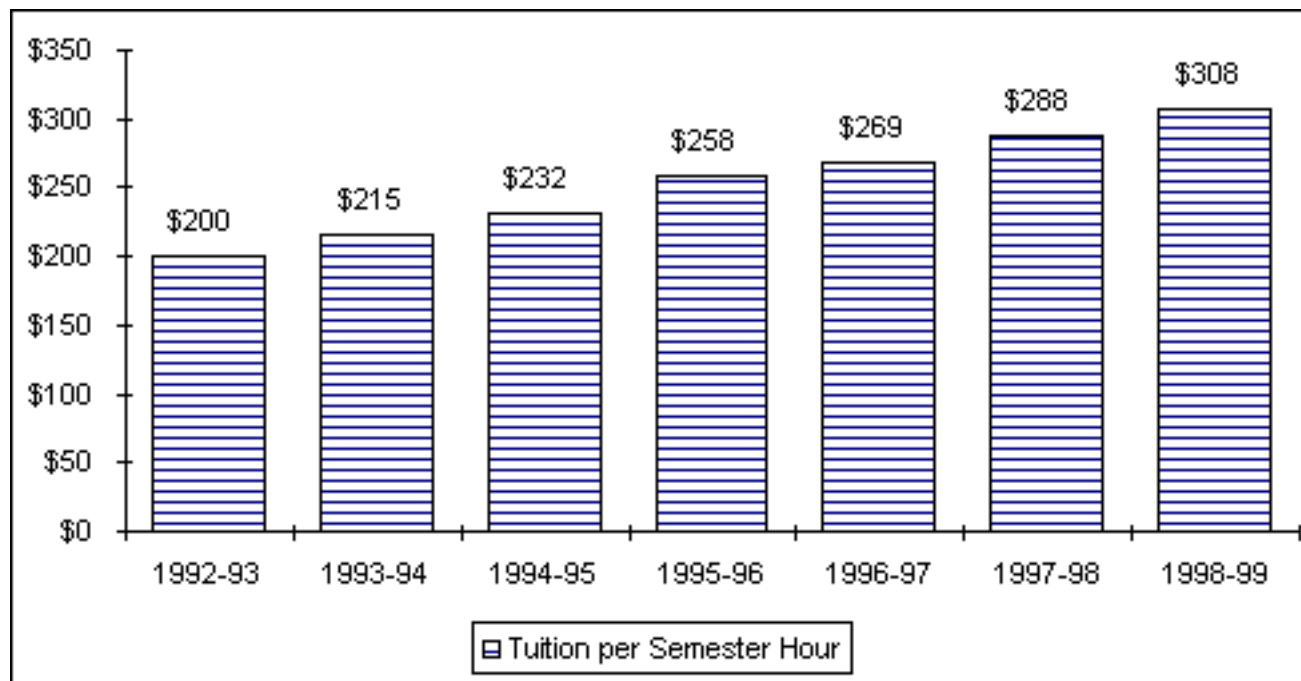
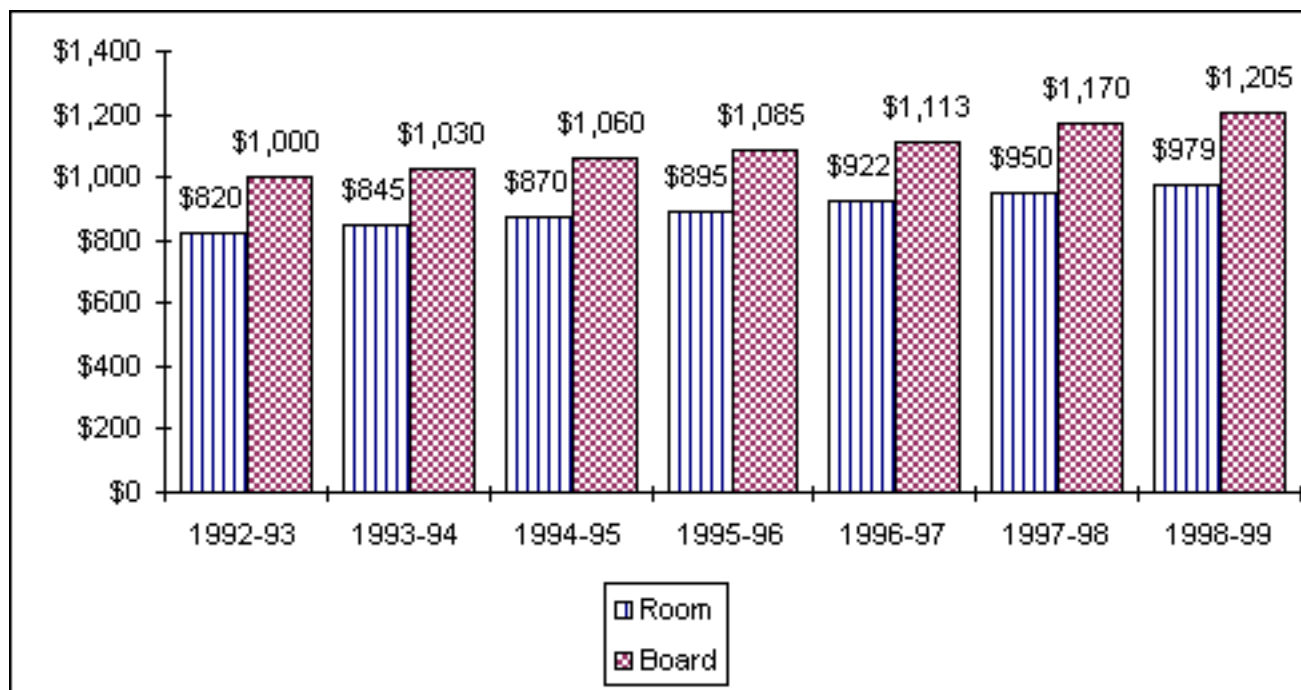
Last Updated on 3/25/99

By Baylor University (IMTS)

Email: John_Coleman@baylor.edu

Trends 1992 - 1998

**Tuition, Room and Board Charges
1992-93 through 1998-99**



Source: Controller's Office



Back to Top



Back to Table of Contents

Go to Undergraduate Student Cost Profile

Last Updated on 3/25/99

By Baylor University (IMTS)

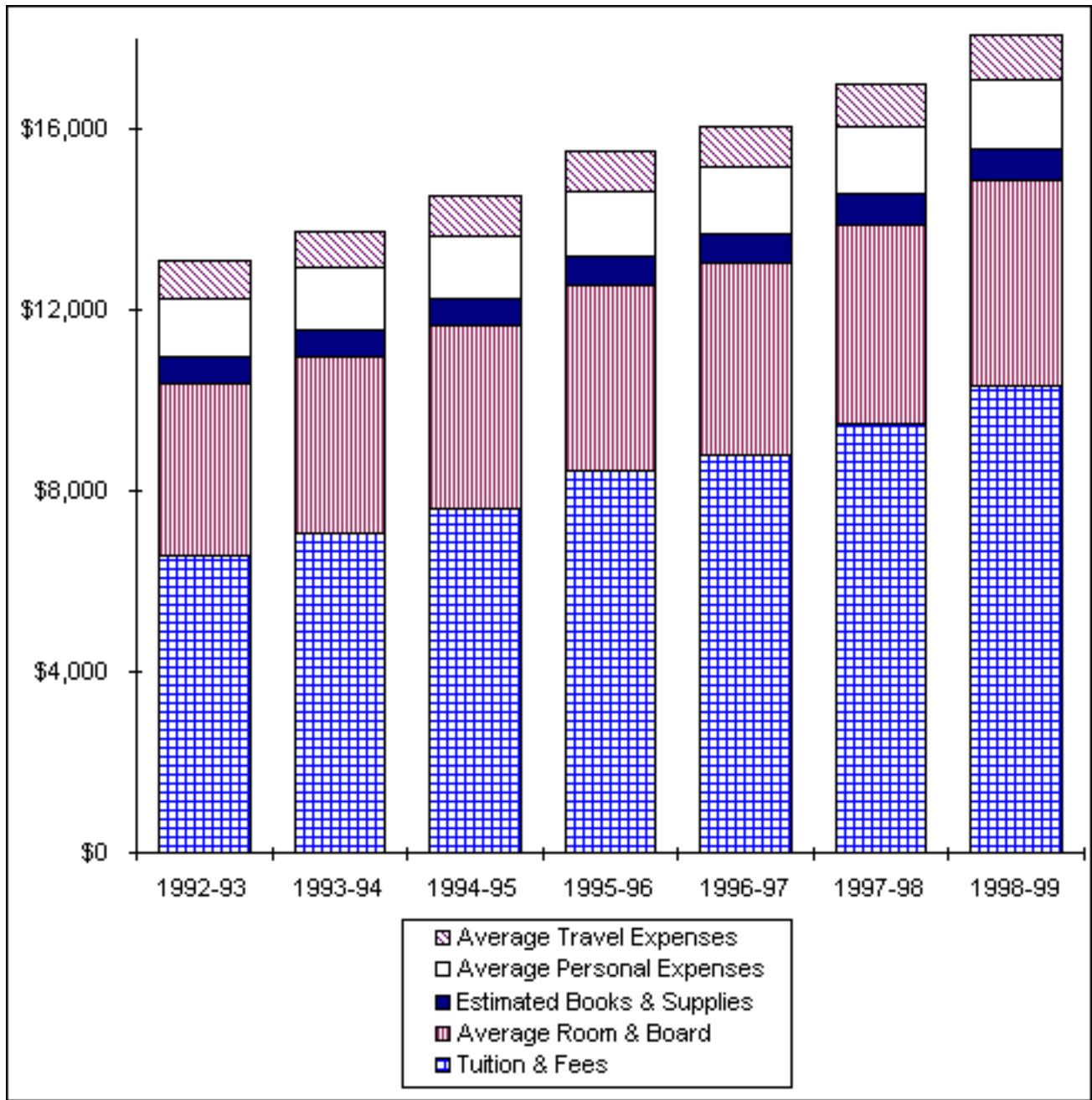
Email: John_Coleman@baylor.edu

Trends 1992 - 1998

Undergraduate Student Cost Profile

1992-93 through 1998-99

	1992-93	1993-94	1994-95	1995-96	1996-97	1997-98	1998-99
Tuition & Fees	\$6,590	\$7,070	\$7,624	\$8,444	\$8,806	\$9,478	\$10,316
Average Room & Board	\$3,805	\$3,920	\$4,034	\$4,140	\$4,254	\$4,433	\$4,566
Estimated Books & Supplies	\$584	\$600	\$616	\$634	\$652	\$670	\$690
Average Personal Expenses	\$1,308	\$1,346	\$1,386	\$1,426	\$1,468	\$1,512	\$1,556
Average Travel Expenses	\$806	\$830	\$854	\$878	\$904	\$930	\$956
Average Total Cost	\$13,093	\$13,766	\$14,514	\$15,522	\$16,084	\$17,023	\$18,084
Increase from Prior Year	6.0%	5.1%	5.4%	6.9%	3.6%	5.8%	6.2%



Source: ICUT


[Back to Top](#)

[Back to Table of Contents](#)



[Go to Current Funds: Sources of Revenues](#)

Last Updated on 3/25/99

By Baylor University (IMTS)

Email: John_Coleman@baylor.edu

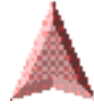
Trends 1992 - 1998

Current Funds 1992-93 through 1997-98

Sources of Revenues

	1992-93	1993-94	1994-95	1995-96	1996-97	1997-98
Educational & General:						
Tuition & Fees	\$75,284,497	\$80,903,995	\$86,690,344	\$95,766,633	\$102,119,795	\$111,543,357
Gifts & Private Grants	4,138,289	4,925,502	4,787,398	6,096,926	6,498,951	8,222,151
Baptist General Convention of Texas Appropriation	3,802,305	3,906,801	3,863,765	3,686,271	3,928,739	4,039,046
Permanent Endowment Income	12,219,430	11,877,759	12,415,371	12,972,774	13,822,654	15,229,575
Quasi-Endowment Income	2,297,276	2,570,557	2,610,075	2,790,181	2,982,597	2,960,184
Grants & Contracts	8,579,927	8,410,074	9,044,914	10,632,436	11,544,893	13,310,417
Investment Income	1,045,702	1,081,261	1,715,764	1,813,056	1,963,430	2,225,694
Other Sources	10,168,371	10,841,685	9,130,582	11,017,165	10,663,811	10,923,589
Total Educational & General	117,535,797	124,517,634	130,258,213	144,775,442	153,524,870	168,454,013
Auxiliary Enterprises	24,235,570	24,669,743	25,329,146	26,144,088	29,566,793	32,578,035
Total Revenues	\$141,771,367	\$149,187,377	\$155,587,359	\$170,919,530	\$183,091,663	\$201,032,048

Source: Controller's Office



Back to Top

Back to Table of Contents



Go to Sources of Revenue as a Percentage of Total Revenues

Last Updated on 3/25/99

By Baylor University (IMTS)

Email: John_Coleman@baylor.edu

Trends 1992 - 1998

Sources of Revenues as a Percentage of Total Revenues

	1992-93	1993-94	1994-95	1995-96	1996-97	1997-98
Educational & General:						
Tuition & Fees	53.1%	54.2%	55.7%	56.0%	55.8%	55.5%
Gifts & Private Grants	2.9%	3.3%	3.1%	3.6%	3.5%	4.1%
Baptist General Convention						
of Texas Appropriation	2.7%	2.6%	2.5%	2.2%	2.1%	2.0%
Permanent Endowment Income	8.6%	8.0%	8.0%	7.6%	7.5%	7.6%
Quasi-Endowment Income	1.6%	1.7%	1.7%	1.6%	1.6%	1.5%
Grants & Contracts	6.1%	5.6%	5.8%	6.2%	6.3%	6.6%
Investment Income	0.7%	0.7%	1.1%	1.1%	1.1%	1.1%
Other Sources	7.2%	7.3%	5.9%	6.4%	5.8%	5.4%
Total Educational & General	82.9%	83.5%	83.7%	84.7%	83.9%	83.8%
Auxiliary Enterprises	17.1%	16.5%	16.3%	15.3%	16.1%	16.2%
Total Revenues	100.0%	100.0%	100.0%	100.0%	100.0%	100.0%

Source: Controller's Office


Back to Top

Back to Table of Contents



Go to Revenues

Last Updated on 3/25/99

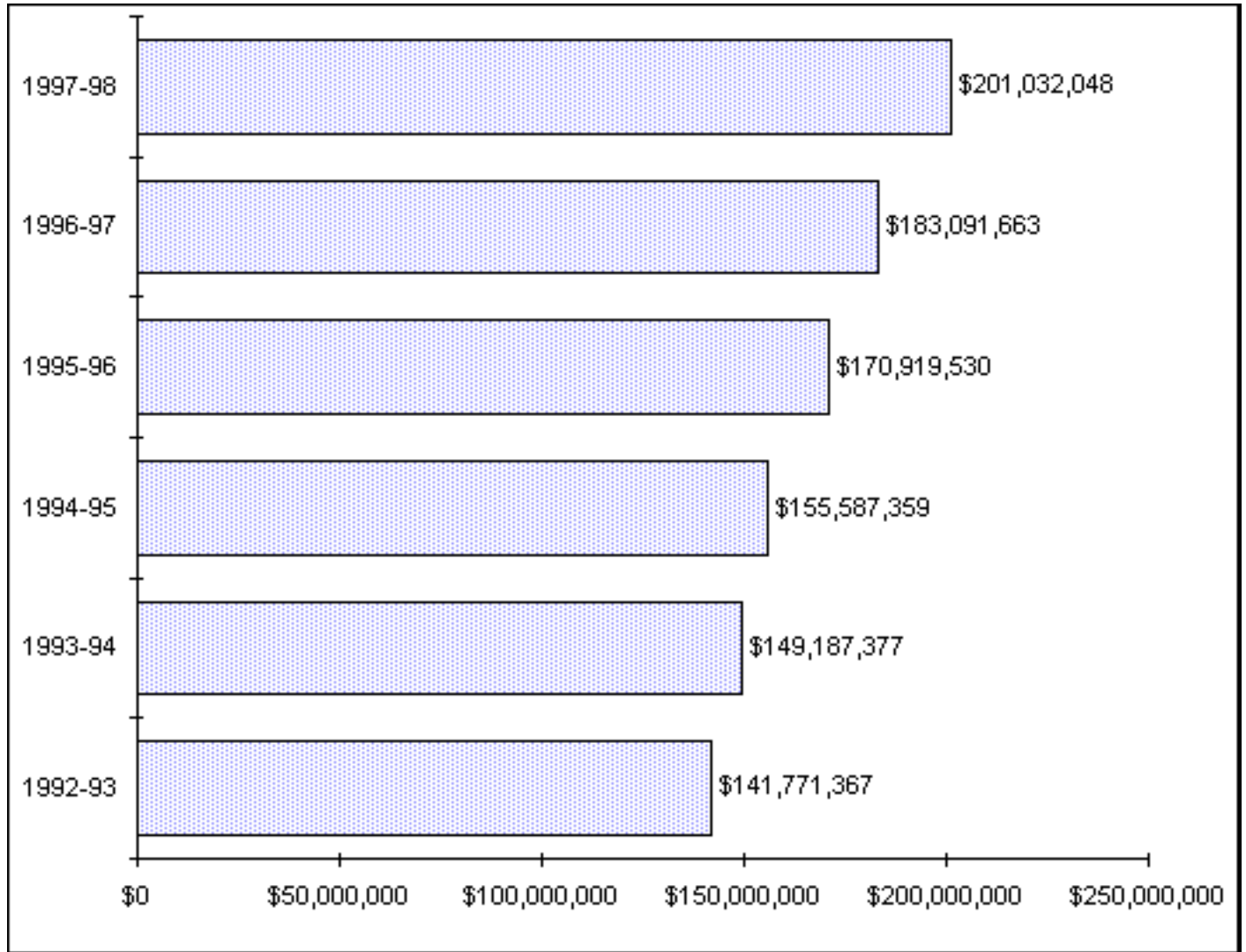
By Baylor University (IMTS)

Email: John_Coleman@baylor.edu

Trends 1992 - 1998

Current Funds (Continued) 1992-93 through 1997-98

Revenues



Source: Controller's Office



Back to Top



Back to Table of Contents

Go to Functions of Expenditures

Last Updated on 3/25/99

By Baylor University (IMTS)

Email: John_Coleman@baylor.edu

Trends 1992 - 1998

Current Funds (Continued) 1992-93 through 1997-98

Functions of Expenditures

	1992-93	1993-94	1994-95	1995-96	1996-97	1997-98
Educational & General:						
Instruction	\$55,821,343	\$57,454,444	\$61,216,035	\$65,820,176	\$67,763,446	\$71,509,669
Research	1,662,668	1,402,973	1,777,467	1,671,198	2,319,860	2,167,146
Academic Support	9,227,859	9,788,090	10,297,393	11,535,272	11,995,649	12,738,077
Student Services	9,392,588	9,656,549	10,047,060	10,657,551	11,014,451	10,115,010
Public Service	1,160,126	898,156	1,229,860	966,487	1,161,053	1,205,050
Plant Operations & Maintenance	8,354,998	8,556,718	8,874,008	9,832,246	10,165,521	10,448,880
Institutional Support	11,357,520	14,692,892	14,678,477	15,835,099	18,585,422	18,969,334
Scholarships & Fellowships	18,970,661	19,597,777	20,633,319	23,854,596	25,296,689	28,494,769
Educational & General Expenditures	115,947,763	122,047,599	128,753,619	140,172,625	148,302,091	155,647,936
Mandatory Transfers	1,345,189	(968,168)	78,999	67,518	95,975	139,371
Total Educational & General	117,292,952	121,079,431	128,832,618	140,240,143	148,398,066	155,787,307
Auxiliary Enterprises:						
Expenditures	21,683,751	22,132,691	23,525,279	24,287,081	27,314,680	31,274,094
Mandatory Transfers for:						
Principal & Interest	1,170,961	389,723	363,348	372,963	372,963	372,963
Renewals & Replacements	552,016	411,769	9,971	9,050	0	0
Other						22
Total Auxiliary Enterprises	23,406,728	22,934,183	23,898,598	24,669,094	27,687,643	31,647,079
Total Expenditures &						

Mandatory Transfers	140,699,680	144,013,614	152,731,216	164,909,237	176,085,709	187,434,386
Excess Revenues Before Discretionary Transfers and Other Changes						
Discretionary Transfers & Other Changes:						
Restricted Receipts Not Expended	374,685	2,888,115	3,232,816	4,186,322	3,426,025	4,938,936
Discretionary Transfers:						
Plant Funds	(1,004,034)	(2,390,537)	(3,806,622)	(3,582,943)	(5,757,897)	(11,217,118)
Quasi-Endowment Funds:						
Unrestricted	(75,356)	(2,795,835)	791,212	(2,419,615)	(1,358,021)	(2,422,235)
Restricted	(229,711)	(2,106,817)	(1,715,101)	(1,236,392)	(1,197,171)	(1,203,175)
Excess Revenues After Transfers and Other Changes:						
Restricted	\$337,328	\$116,376	\$747,340	\$1,358,448	\$2,957,665	\$3,694,071

Source: Annual Reports


Back to Top

Back to Table of Contents 



Go to Functions of Expenditures as a Percentage of Total Expenditures and Mandatory Transfers

*Last Updated on 3/25/99
 By Baylor University (IMTS)*

Email: John_Coleman@baylor.edu

Trends 1992 - 1998

Current Funds (Continued)

1992-93 through 1997-98

Functions of Expenditures as a Percentage of Total Expenditures and Mandatory Transfers

	1992-93	1993-94	1994-95	1995-96	1996-97	1997-98
Educational & General:						
Instruction	39.7%	39.9%	40.1%	39.9%	38.5%	38.2%
Research	1.2%	1.0%	1.2%	1.0%	1.3%	1.2%
Academic Support	6.6%	6.8%	6.7%	7.0%	6.8%	6.8%
Student Services	6.7%	6.7%	6.6%	6.5%	6.3%	5.4%
Public Service	0.8%	0.6%	0.8%	0.6%	0.7%	0.6%
Plant Operations & Maintenance	5.9%	5.9%	5.8%	6.0%	5.8%	5.6%
Institutional Support	8.1%	10.2%	9.6%	9.6%	10.6%	10.1%
Scholarships & Fellowships	13.5%	13.6%	13.5%	14.5%	14.4%	15.2%
Educational & General	82.4%	84.7%	84.3%	85.0%	84.2%	83.0%
Mandatory Transfers	1.0%	-0.7%	0.1%	0.0%	0.1%	0.1%
Total Educational & General	83.4%	84.1%	84.4%	85.0%	84.3%	83.1%
Auxiliary Enterprises:						
Expenditures	15.4%	15.4%	15.4%	14.7%	15.5%	16.7%
Mandatory Transfers for:						
Principal & Interest	0.8%	0.3%	0.2%	0.2%	0.2%	0.2%
Renewals & Replacements	0.4%	0.3%	0.0%	0.0%	0.0%	0.0%

Total Auxiliary Enterprises	16.6%	15.9%	15.6%	15.0%	15.7%	16.9%
Total Expenditures & Mandatory Transfers	100.0%	100.0%	100.0%	100.0%	100.0%	100.0%

Source: Annual Reports

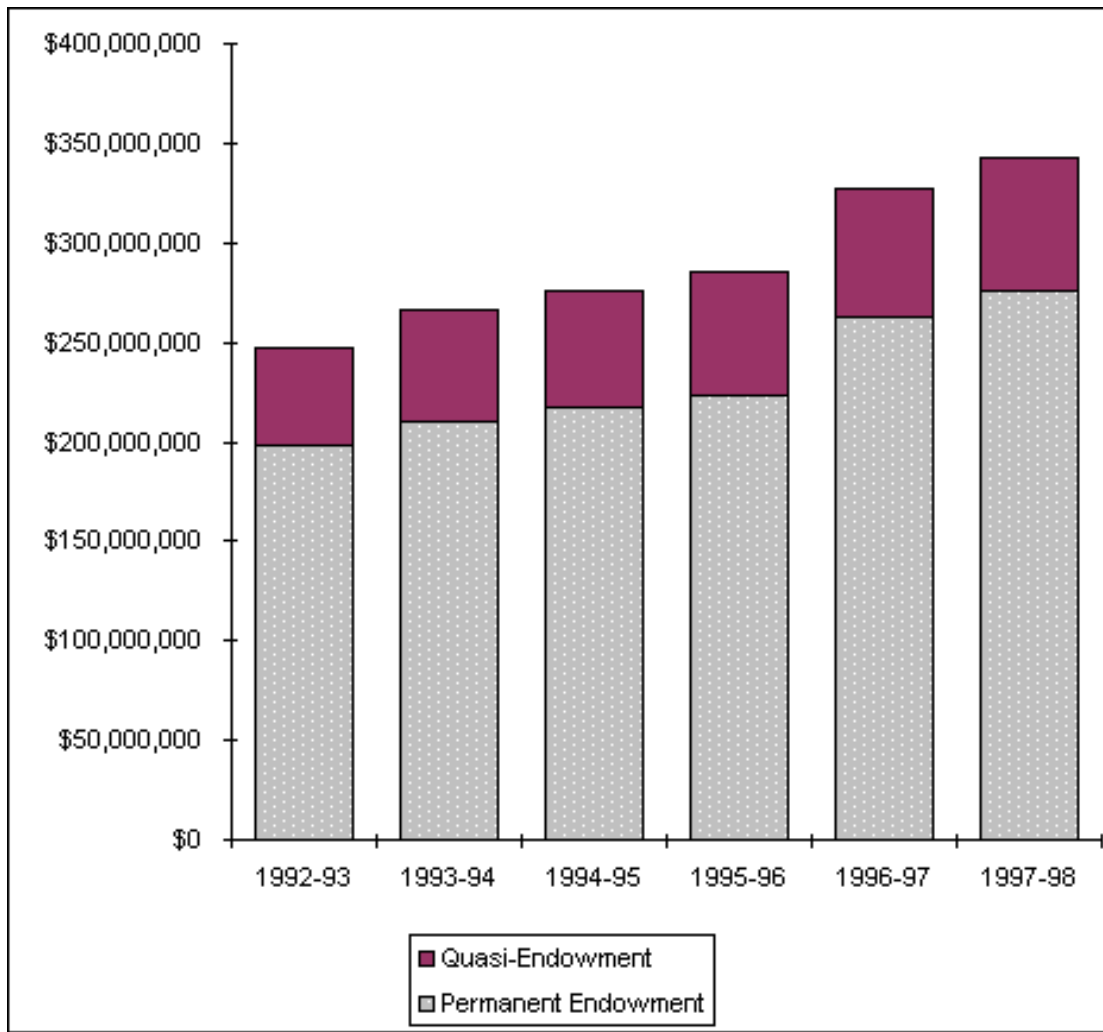


Last Updated on 3/25/99
By Baylor University (IMTS)
Email: John_Coleman@baylor.edu

Trends 1992 - 1998

Endowment Fund Balance 1992-93 through 1997-98 (As of May 31)

	1992-93	1993-94	1994-95	1995-96	1996-97	1997-98
Permanent Endowment	\$197,925,998	\$210,386,624	\$217,874,824	\$223,634,048	\$262,958,152	\$275,305,022
Quasi- Endowment	49,633,342	55,853,378	57,358,185	61,364,591	63,981,484	67,571,518
Total Endowment	\$247,559,340	\$266,240,002	\$275,233,009	\$284,998,639	\$326,939,636	\$342,876,540
Permanent Endowment	80.0%	79.0%	79.2%	78.5%	80.4%	80.3%
Quasi- Endowment	20.0%	21.0%	20.8%	21.5%	19.6%	19.7%
Total Endowment	100.0%	100.0%	100.0%	100.0%	100.0%	100.0%



Source: Controller's Office

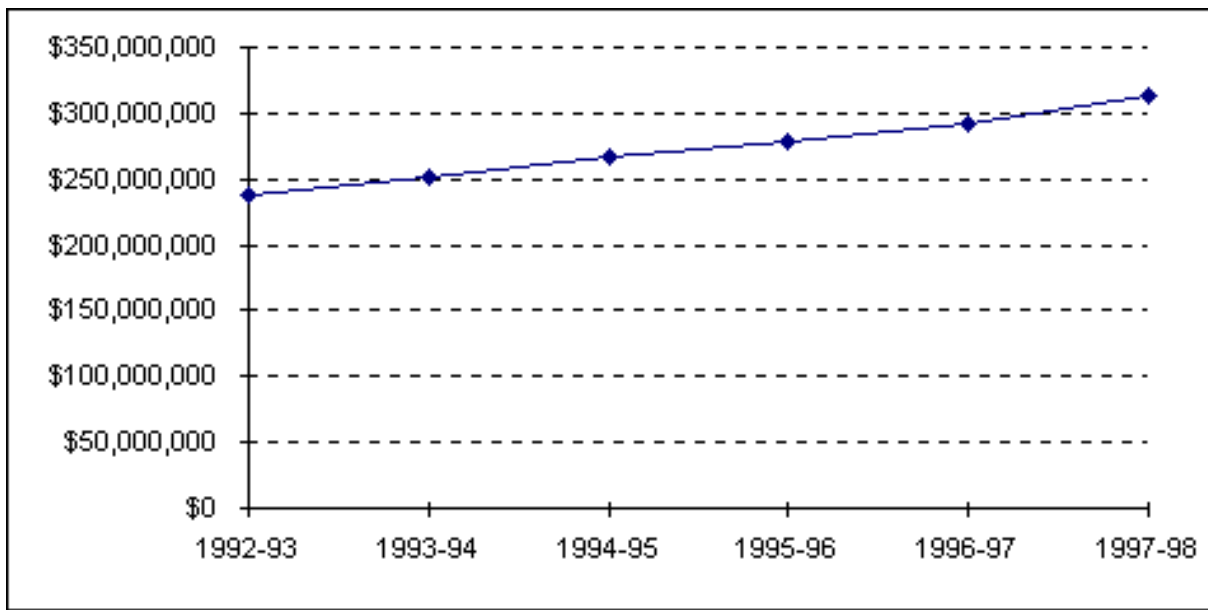


Last Updated on 3/25/99
By Baylor University (IMTS)
Email: John_Coleman@baylor.edu

Trends 1992 - 1998

Property, Plant and Equipment* 1992-93 through 1997-98 (As of May 31)

	1992-93	1993-94	1994-95	1995-96	1996-97	1997-98
Property, Plant & Equipment	\$237,757,738	\$251,931,960	\$266,665,724	\$278,959,946	\$292,069,595	\$312,970,286



*Does not reflect the impact of accumulated depreciation.

Source: Controller's Office


Back to Top

Back to Table of Contents   **Go to Assets**

Last Updated on 3/25/99

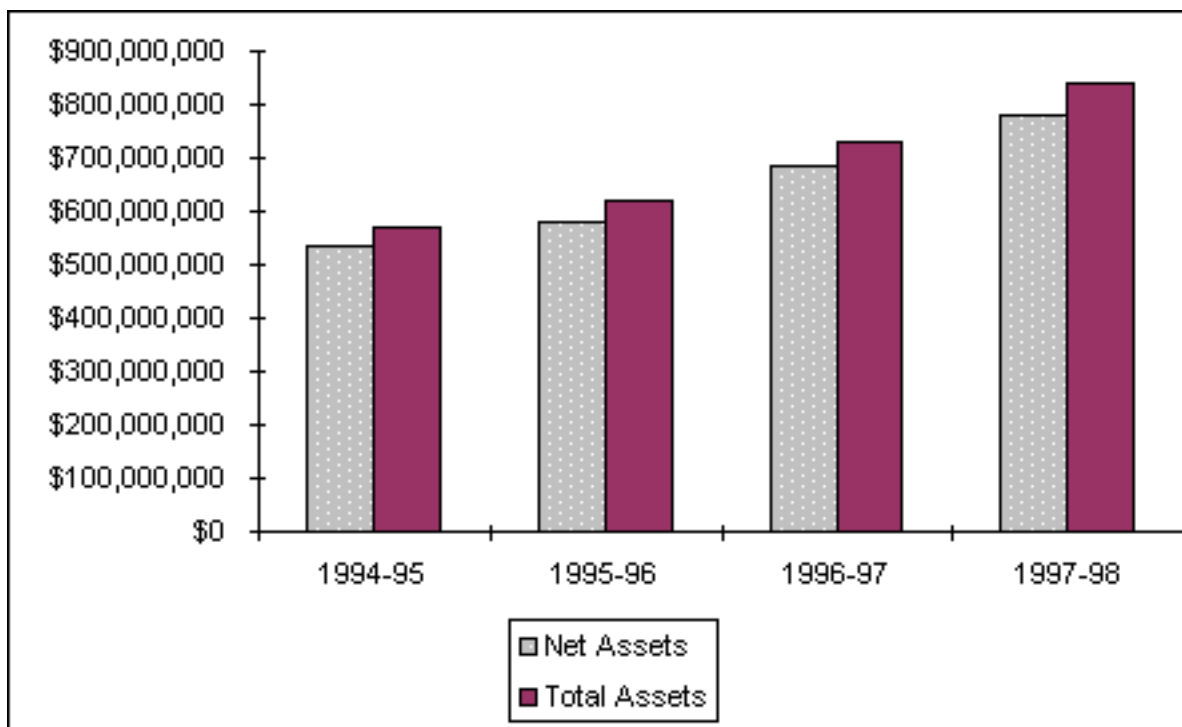
By Baylor University (IMTS)

Email: John_Coleman@baylor.edu

Trends 1992 - 1998

Assets**
1994-95 through 1997-98
(As of May 31)

	1994-95	1995-96	1996-97	1997-98
Net Assets	\$534,022,990	\$578,970,068	\$685,591,253	\$780,752,000
Total Assets	\$571,255,088	\$618,170,617	\$727,519,700	\$841,823,000



**Due to a change in accounting standards, only the years 1994-95 through 1997-98 are shown.

Source: Controller's Office



Back to Top



Back to Table of Contents

Last Updated on 3/25/99

By Baylor University (IMTS)

Email: John_Coleman@baylor.edu