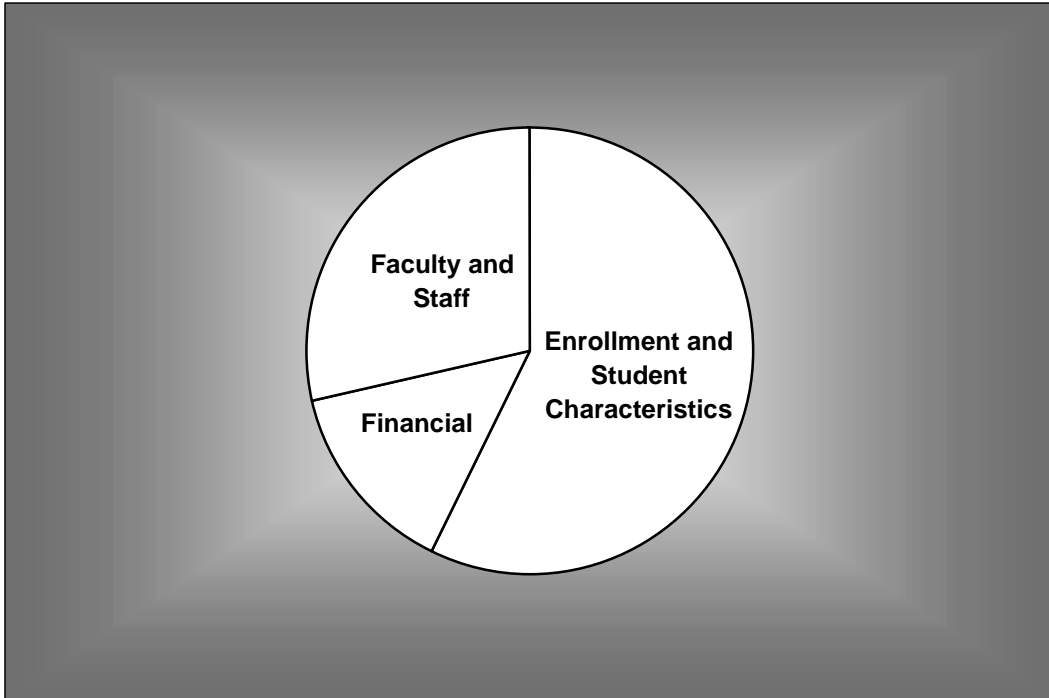


BAYLOR TRENDS



Fall 1993 - Fall 1999

Volume XI

Prepared by the Office of Institutional Research and Testing, May 2000

http://www.baylor.edu/~Off_Plan_Inst_Rsrch/

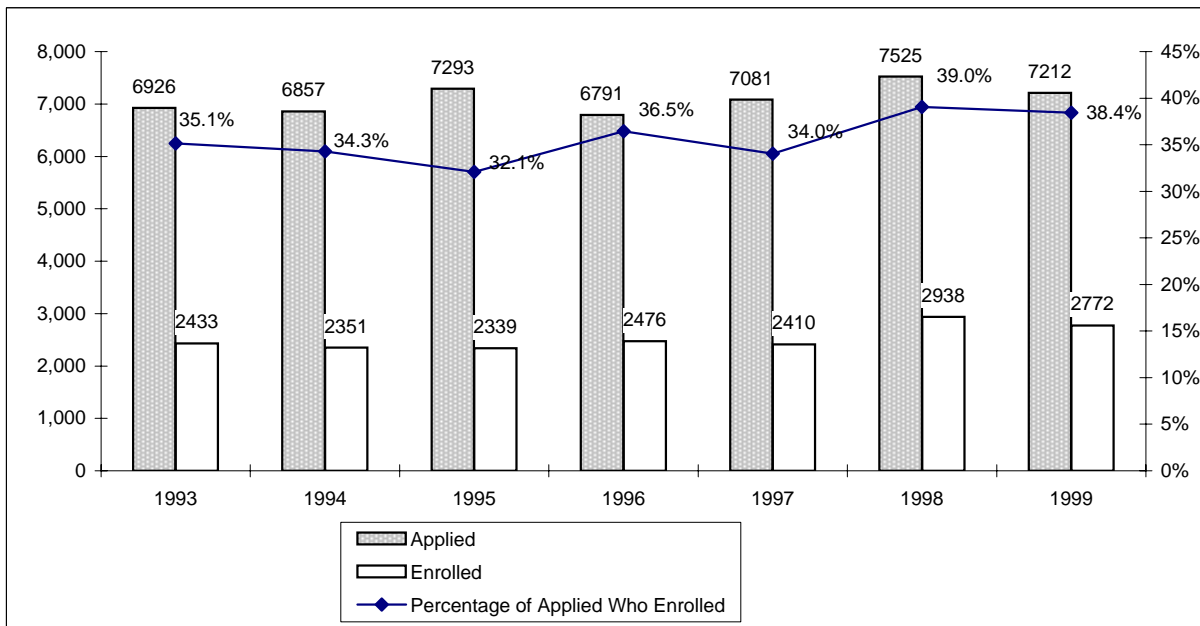
Table of Contents

	Page
ENROLLMENT AND STUDENT CHARACTERISTICS	
<i>New Freshman Applications and Enrollment</i>	1
<i>Transfer Applications and Enrollment</i>	1
<i>New Freshman Applications and Enrollment by Gender</i>	2
<i>New Freshman and Transfer Student Enrollment</i>	3
<i>Enrollment by Classification</i>	4
<i>Enrollment</i>	5
<i>Enrollment by Gender, Waco Campus</i>	6
<i>Enrollment by Religious Affiliation, Waco Campus</i>	7
<i>Baptist Percentage, Waco Campus</i>	7
<i>Enrollment by Racial/Ethnic Group</i>	8
<i>Racial/Ethnic Minority Percentage</i>	8
<i>Leading Texas Counties of Origin</i>	9
<i>Leading States of Origin</i>	9
<i>Percentage from Top Four Texas Counties</i>	10
<i>Percentage from Texas</i>	10
<i>Texas Enrollment by County</i>	11
<i>Enrollment by State</i>	12
<i>Countries Represented by Nonresident Aliens</i>	13
<i>Percentage of Nonresident Aliens</i>	13
<i>Enrollment by Unit</i>	14
<i>Enrollment Percentage by Unit</i>	15
<i>Student Credit Hours by Unit, Waco Campus</i>	16
<i>Retention of First-Time Freshman Classes</i>	17
<i>Distribution of Degrees</i>	18
<i>Summary of Degrees Awarded</i>	19
<i>Degree Programs</i>	20
FACULTY AND STAFF	
<i>Full-Time Faculty Positions</i>	22
<i>Highest Degree Earned by Full-Time Faculty</i>	22
<i>Percentage of Full-Time Faculty with Tenure</i>	23
<i>Average Salaries of Full-Time Instructional Faculty on Academic Year Contracts</i>	24
<i>Average Compensation of Full-Time Instructional Faculty on Academic Year Contracts</i>	25
<i>Institutional Staff</i>	26
<i>Percentage of Institutional Staff</i>	26
<i>Faculty by Religious Affiliation</i>	27
<i>Staff by Religious Affiliation</i>	27

FINANCIAL

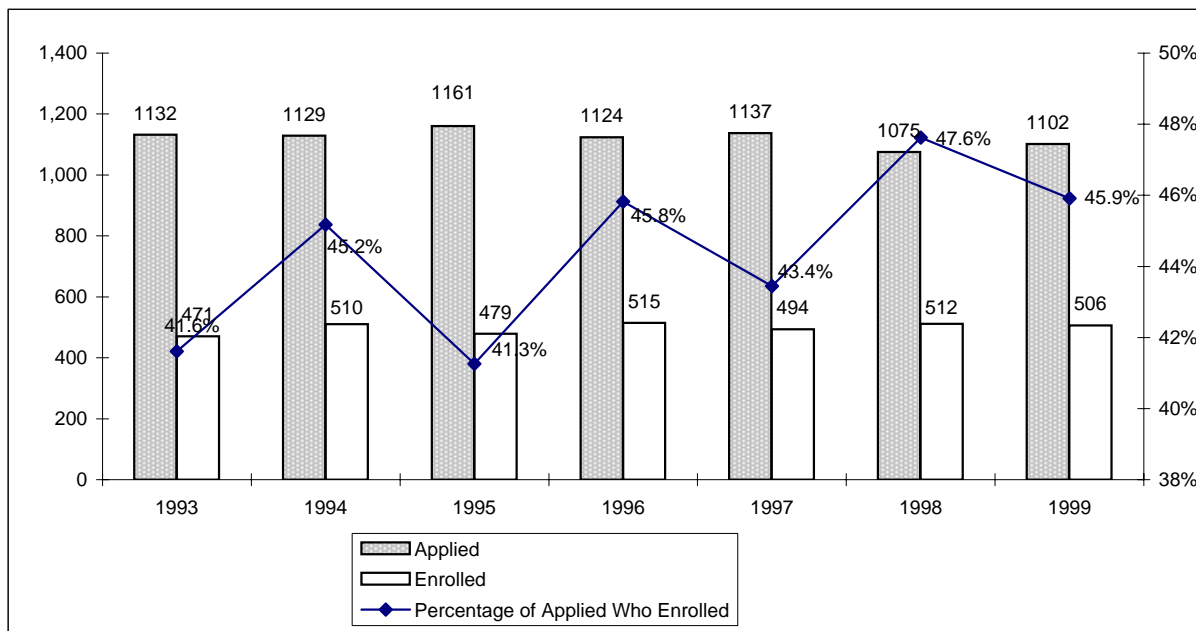
Tuition and Other Semester Charges28
Tuition, Room and Board Charges29
Annual Undergraduate Student Cost Profile.....30
Operating Funds:
 Sources of Revenues31
 Sources of Revenue as a Percentage of Total Revenues31
 Expenditures by Functions32
 Expenditures by Functions as a Percentage of Total Expenditures.....32
Endowment Fund Balance - Market Value33
Property, Plant and Equipment.....34
Assets34

**New Freshman Applications and Enrollment*
Fall 1993 - Fall 1999**



Sources: Admissions Office and IRT.

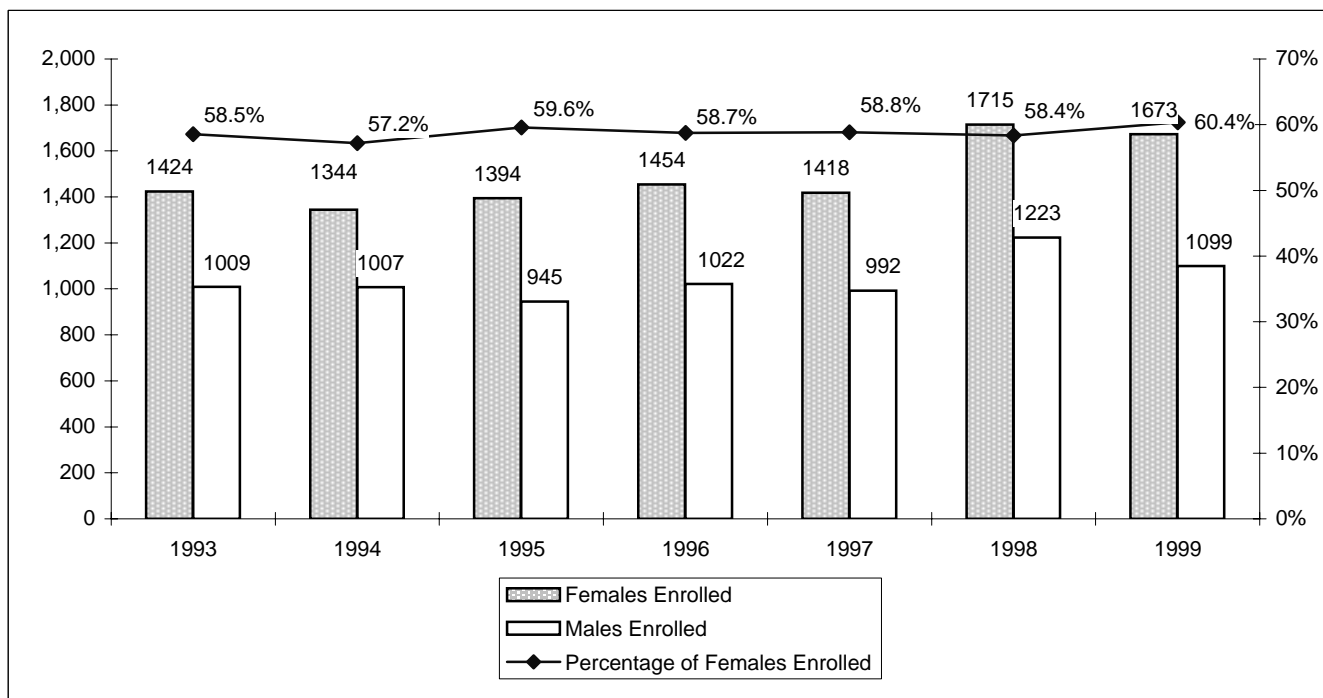
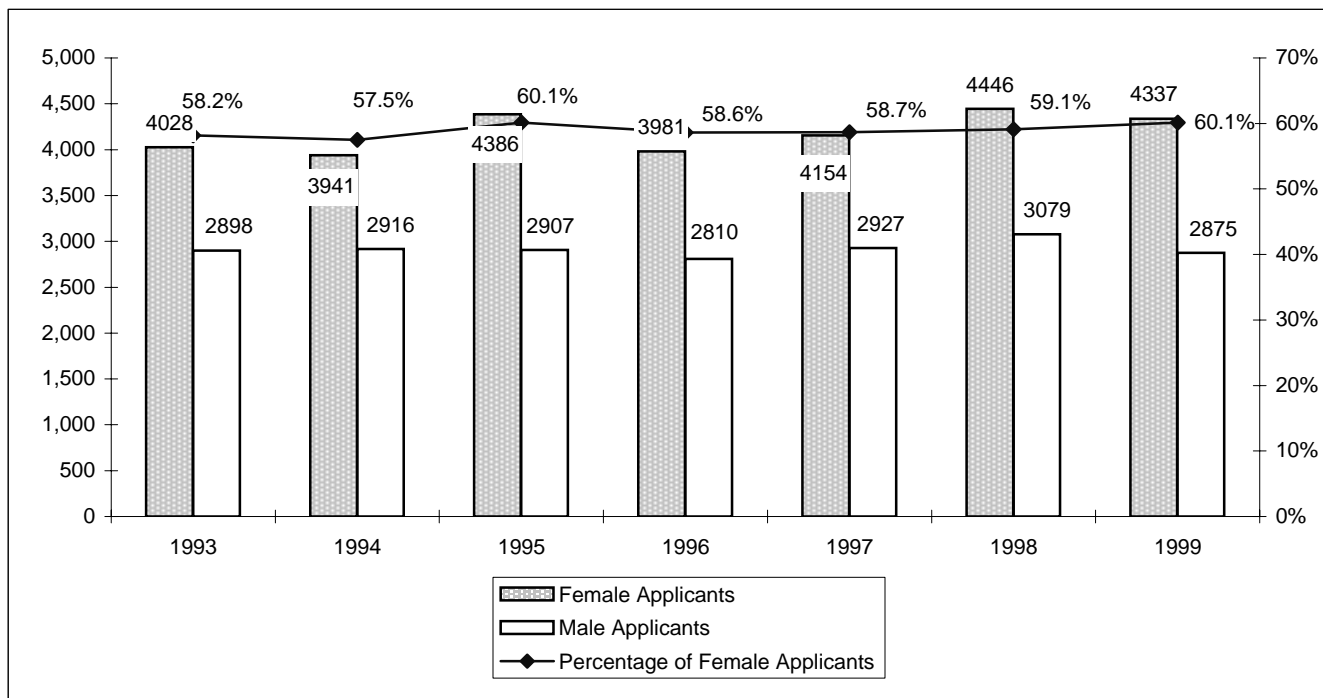
**Transfer Applications and Enrollment*
Fall 1993 - Fall 1999**



*Applications that were canceled and changed to future terms not included. Enrollment as of 12th class day.

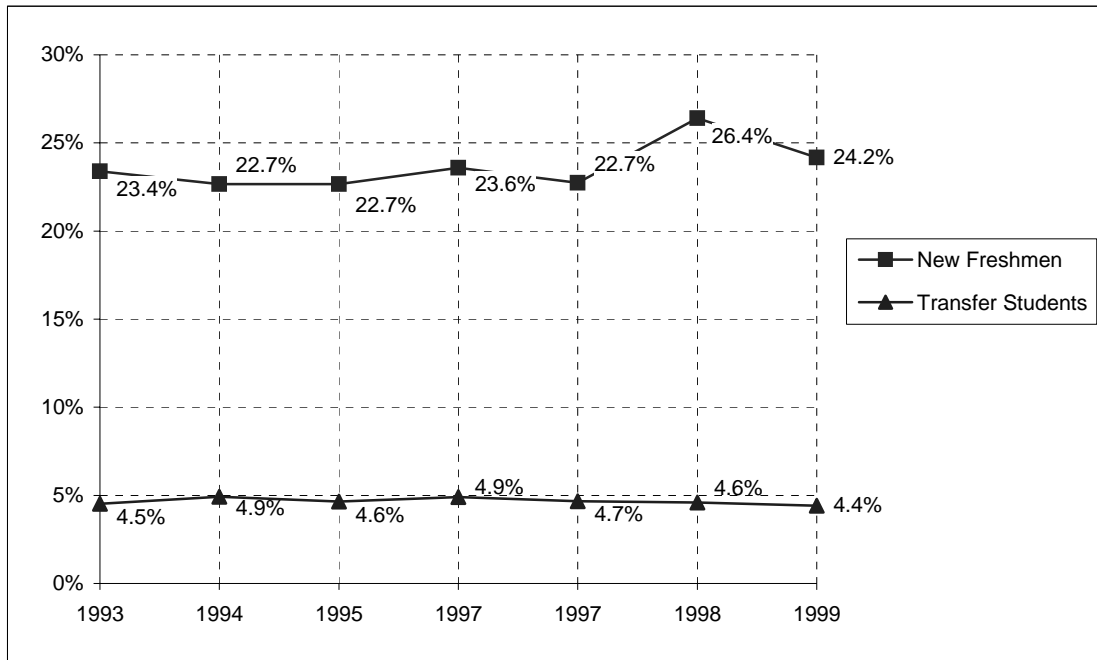
Sources: Admissions Office and IRT.

New Freshman Applications and Enrollment by Gender*
Fall 1993 - Fall 1999



*Applications that were canceled and changed to future terms not included. Enrollment as of 12th class day.

**New Freshman and Transfer Student Enrollment
Fall 1993 - Fall 1999**



Fall	1993	1994	1995	1997	1997	1998	1999
New Freshmen	2,433	2,351	2,339	2,476	2,410	2,938	2,772
Transfer Students	471	510	479	515	494	512	506
Undergraduate Enrollment	10,403	10,373	10,323	10,500	10,597	11,124	11,472
% New Freshmen	23.4%	22.7%	22.7%	23.6%	22.7%	26.4%	24.2%
% Transfer Students	4.5%	4.9%	4.6%	4.9%	4.7%	4.6%	4.4%

Notes:

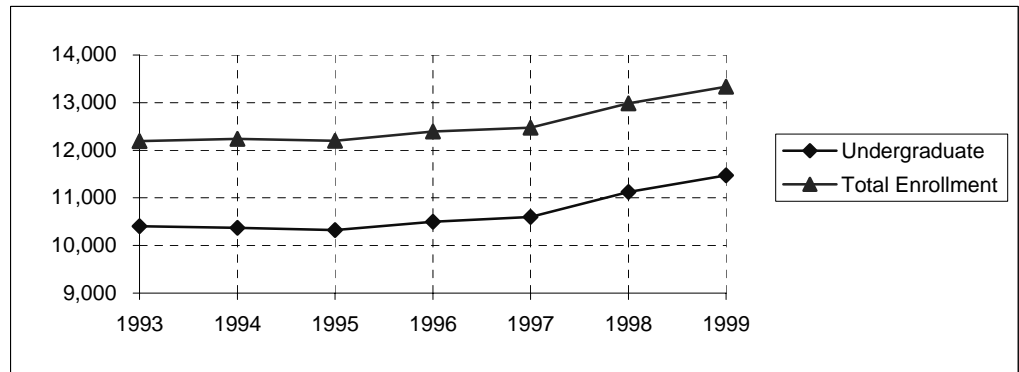
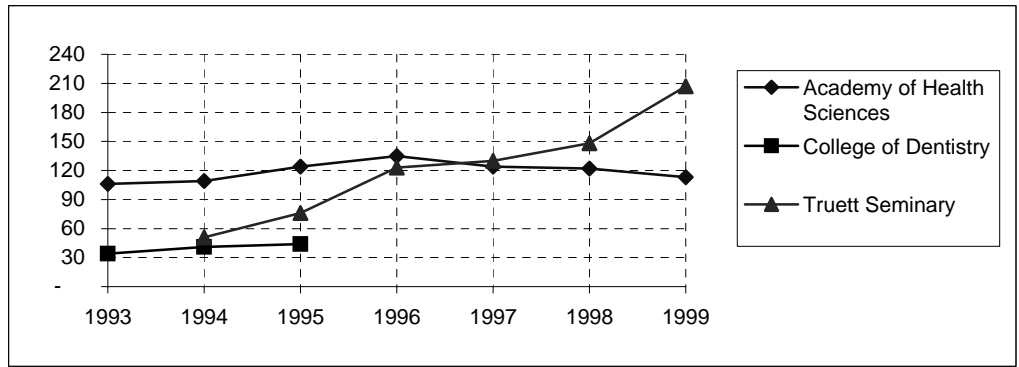
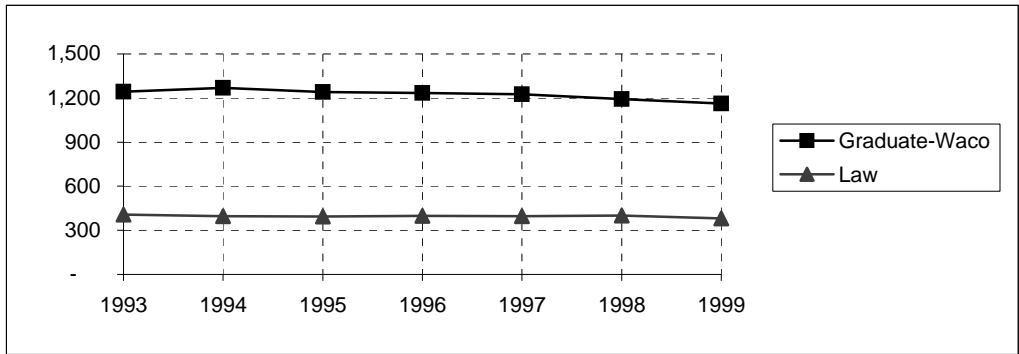
1. Freshmen who enter the University in the fall or preceding summer term are counted as "new freshmen." Similarly, transfer students entering in the fall or preceding summer term are counted as "transfer students" for the fall semester.

2. "Transfer students" refers to the entering summer/fall group of transfer students. For example, in Fall 1998, the 512 entering transfer students comprised 4.6% of the 11,124 undergraduates. However, for Fall 1998, the total number of enrolled undergraduates who had transferred into the University consisted of (a) transfers who entered in Fall 1998 and (b) students who transferred into the University in previous academic years. Generally, the total enrollment of students who had entered as transfer students is approximately 15% of the undergraduate student body.

**Enrollment by Classification
Fall 1993 - Fall 1999**

Fall	1993	1994	1995	1996	1997	1998	1999
Freshman	3,256	3,205	3,043	3,151	3,070	3,566	3,534
Sophomore	2,075	2,183	2,230	2,210	2,458	2,333	2,619
Junior	2,069	2,041	2,182	2,166	2,139	2,314	2,244
Senior	2,815	2,686	2,646	2,819	2,774	2,779	2,956
Special	32	54	22	26	40	28	29
Special Postbaccalaureate	107						
Postbaccalaureate	49	204	200	128	116	104	90
TOTAL UNDERGRADUATE	10,403	10,373	10,323	10,500	10,597	11,124	11,472
Master's	915	897	854	854	821	807	760
Doctoral	306	316	347	349	356	360	373
Graduate Transient/Nondegree	18			23	28	10	6
Special Graduate	5	57	40	9	20	15	18
Graduate Professional							5
TOTAL "WACO" GRADUATE	1,244	1,270	1,241	1,235	1,225	1,192	1,162
School of Law	407	396	394	398	396	401	380
Truett Seminary		51	76	123	130	148	207
Academy of Health Sciences	106	109	124	135	124	122	113
College of Dentistry	34	41	44				
TOTAL ENROLLMENT	12,194	12,240	12,202	12,391	12,472	12,987	13,334

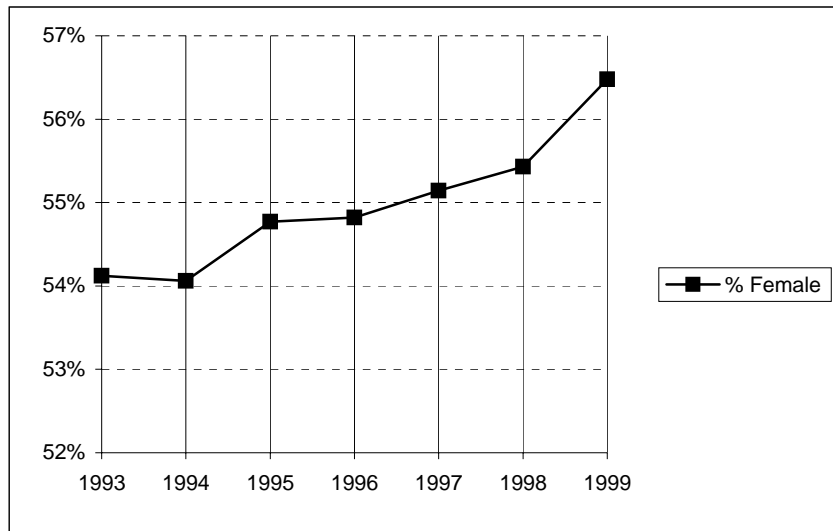
**Enrollment
Fall 1993 - Fall 1999**



Fall	1993	1994	1995	1996	1997	1998	1999
Undergraduate	10,403	10,373	10,323	10,500	10,597	11,124	11,472
Graduate-Waco	1,244	1,270	1,241	1,235	1,225	1,192	1,162
Law	407	396	394	398	396	401	380
Truett Seminary		51	76	123	130	148	207
TOTAL WACO CAMPUS	12,054	12,090	12,034	12,256	12,348	12,865	13,221
College of Dentistry	34	41	44				
Academy of Health Sciences	106	109	124	135	124	122	113
TOTAL ENROLLMENT	12,194	12,240	12,202	12,391	12,472	12,987	13,334

Source: IRT.

**Enrollment by Gender
Waco Campus
Fall 1993 - Fall 1999**

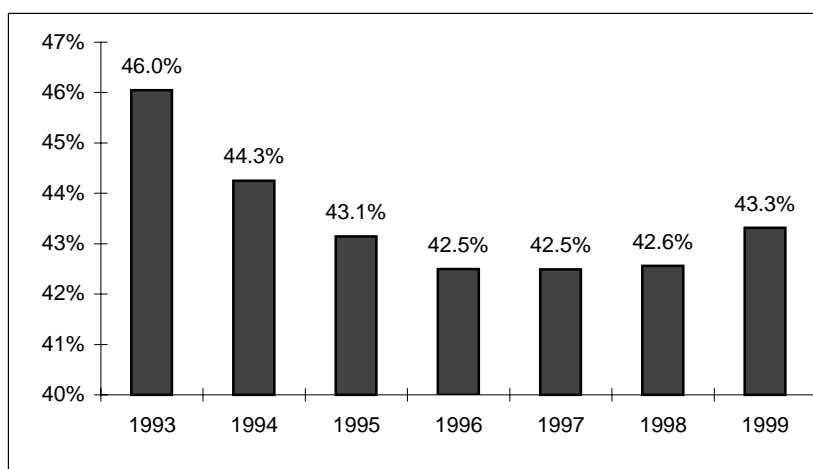


	Fall	1993	1994	1995	1996	1997	1998	1999
Female		6,524	6,536	6,591	6,719	6,809	7,131	7,467
Male		5,530	5,554	5,443	5,537	5,539	5,734	5,754
Waco Campus		12,054	12,090	12,034	12,256	12,348	12,865	13,221
% Female		54.1%	54.1%	54.8%	54.8%	55.1%	55.4%	56.5%
% Male		45.9%	45.9%	45.2%	45.2%	44.9%	44.6%	43.5%

**Enrollment by Religious Affiliation
Waco Campus
Fall 1993 - Fall 1999**

Fall	1993	1994	1995	1996	1997	1998	1999
Assembly of God	155	162	149	157	148	149	153
Baptist	5,546	5,350	5,192	5,208	5,247	5,475	5,727
Buddhist	62	73	84	75	66	70	72
Catholic	1,388	1,500	1,511	1,528	1,544	1,590	1,619
Christian Scientist	8	9	8	8	6	8	5
Church of Christ	255	242	269	246	243	260	254
Church of God	18	19	23	32	18	25	19
Congregational	28	24	21	20	14	14	16
Disciples of Christ	100	92	89	85	83	81	89
Eastern Orthodox	29	45	44	44	45	44	27
Episcopalian	315	314	307	289	271	271	302
Four Square Gospel	6	8	9	13	11	9	7
Hindu	29	50	59	65	75	67	77
Interdenominational	310	332	370	389	403	425	429
Jehovah's Witness	9	9	7	9	9	9	14
Jewish	18	18	17	10	10	8	11
Latter Day Saints (Mormon)	6	21	22	19	19	22	19
Lutheran	335	356	363	383	346	383	398
Mennonite	6	5	4	4	3	5	7
Methodist	1,268	1,241	1,227	1,274	1,190	1,168	1,163
Moslem	25	42	48	55	56	58	77
Nazarene	29	29	23	27	30	29	34
Pentecostal	49	57	68	74	72	67	80
Presbyterian	571	608	554	542	528	532	518
Society of Friends	1	6	7	7	6	7	5
Unitarian	6	9	9	11	8	6	8
United Brethren	2	3	3	5	6	6	8
Other/Not Specified	1,470	1,466	1,547	1,677	1,891	2,077	2,083
TOTAL RELIGION	12,044	12,090	12,034	12,256	12,348	12,865	13,221

**Baptist Percentage
Waco Campus
Fall 1993 - Fall 1999**



Enrollment by Racial / Ethnic Group*
Fall 1993 - Fall 1999

A.

	Fall	1993	1994	1995	1996	1997	1998	1999
African American/Black		493	517	529	623	685	726	751
American Indian/Alaskan Native		55	46	60	60	64	74	65
Asian/Pacific Islander		724	770	777	796	793	809	847
Hispanic		776	902	956	931	917	941	959
White		10,018	9,824	9,662	9,739	9,717	9,995	10,278
Other		95	115	129	149	178	216	239
Not Specified		33	66	89	93	118	226	195
Total		12,194	12,240	12,202	12,391	12,472	12,987	13,334

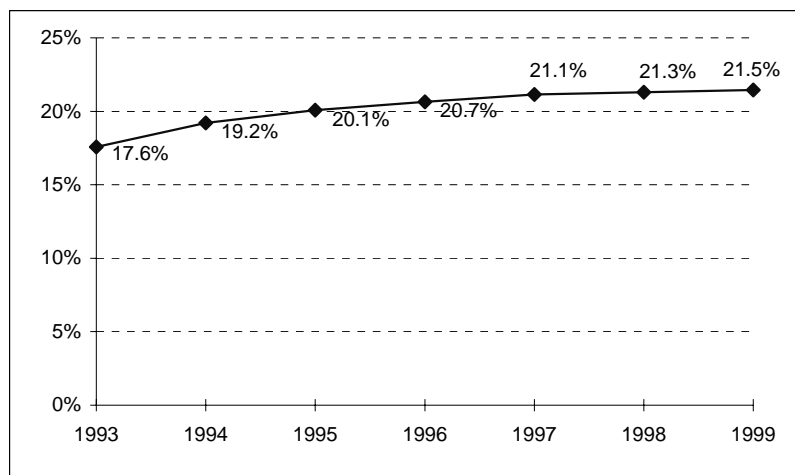
B.

	Fall	1993	1994	1995	1996	1997	1998	1999
African American/Black		480	502	517	609	675	713	731
American Indian/Alaskan Native		55	46	60	60	63	73	64
Asian/Pacific Islander		561	615	633	646	635	636	648
Hispanic		741	856	912	893	880	918	936
White		9,958	9,750	9,598	9,681	9,656	9,934	10,225
Other		64	88	97	120	149	189	209
Not Specified		33	61	77	81	112	212	181
NONRESIDENT ALIEN		302	322	308	301	302	312	340
Total		12,194	12,240	12,202	12,391	12,472	12,987	13,334

*In Table B, nonresident aliens are partitioned as a group.

Source: IRT.

Racial / Ethnic Minority Percentage
Fall 1993 - Fall 1999
(From Table A)



Source: IRT.

**Leading Texas Counties of Origin
Fall 1993 - Fall 1999**

Fall	1993	1994	1995	1996	1997	1998	1999
McLennan	1,965	1,946	2,033	2,030	2,020	2,112	2,124
Harris	1,427	1,395	1,328	1,425	1,505	1,556	1,601
Dallas	1,188	1,146	1,120	1,080	1,125	1,208	1,217
Tarrant	646	663	714	675	726	734	735
Bexar	466	478	460	489	508	570	528
Collin	264	278	277	302	304	363	431
Travis	253	255	248	242	238	267	283
Fort Bend	141	143	165	172	194	218	237
Montgomery	110	122	136	151	184	204	224
Bell	170	204	200	220	220	234	203
Gregg	118	125	122	126	125	118	134
Williamson	92	97	96	110	110	115	133
Denton	96	88	103	124	139	145	131
Smith	93	93	85	90	97	117	128
Galveston	104	113	102	104	106	98	105
Hidalgo	97	113	115	105	87	107	94
El Paso	96	93	94	90	78	90	93
Nueces	96	98	92	89	93	95	91
Jefferson	89	79	77	77	78	87	91

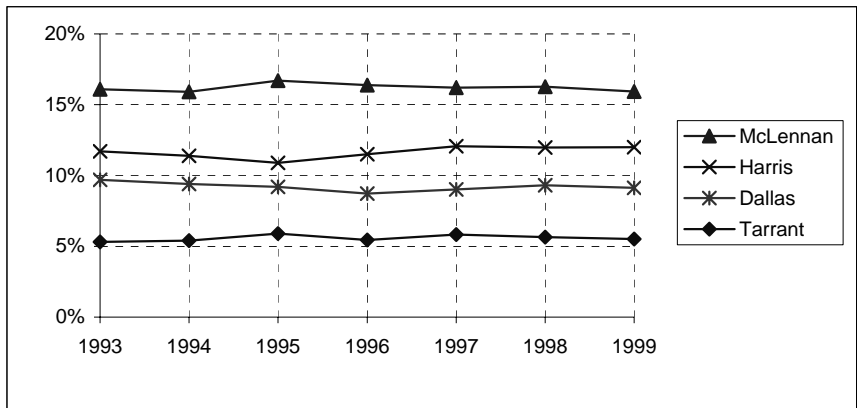
Source: ICUT.

**Leading States of Origin
Fall 1993 - Fall 1999**

Fall	1993	1994	1995	1996	1997	1998	1999
Texas	9,376	9,360	9,311	9,579	9,811	10,386	10,726
California	227	247	259	286	278	273	268
Oklahoma	246	238	245	254	247	237	229
Louisiana	183	181	180	163	157	147	146
Colorado	139	142	148	145	149	135	134
Missouri	205	177	150	148	122	111	116
Arkansas	145	155	154	157	140	122	113
Kansas	116	121	108	111	105	110	109
Florida	93	104	98	98	102	109	92

Source: ICUT.

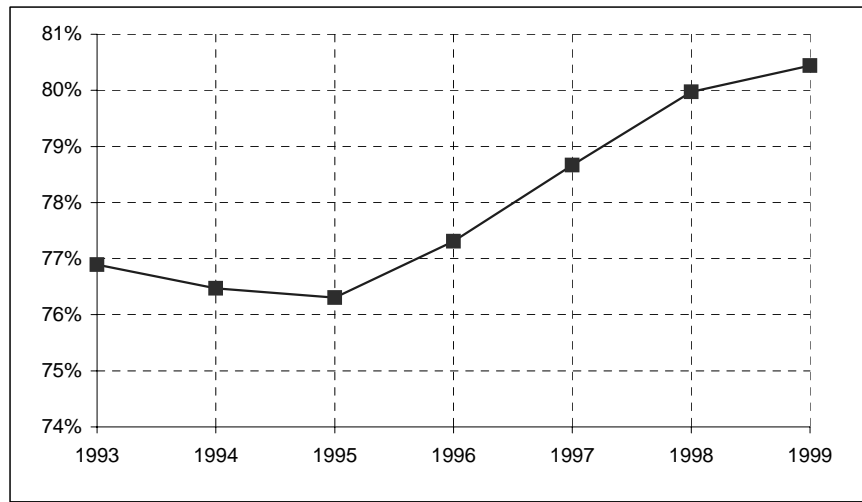
**Percentage From Top Four Texas Counties
Fall 1993 - Fall 1999**



	Fall	1993	1994	1995	1996	1997	1998	1999
McLennan		16.1%	15.9%	16.7%	16.4%	16.2%	16.3%	15.9%
Harris		11.7%	11.4%	10.9%	11.5%	12.1%	12.0%	12.0%
Dallas		9.7%	9.4%	9.2%	8.7%	9.0%	9.3%	9.1%
Tarrant		5.3%	5.4%	5.9%	5.4%	5.8%	5.7%	5.5%

Source: ICUT.

**Percentage From Texas
Fall 1993 - Fall 1999**



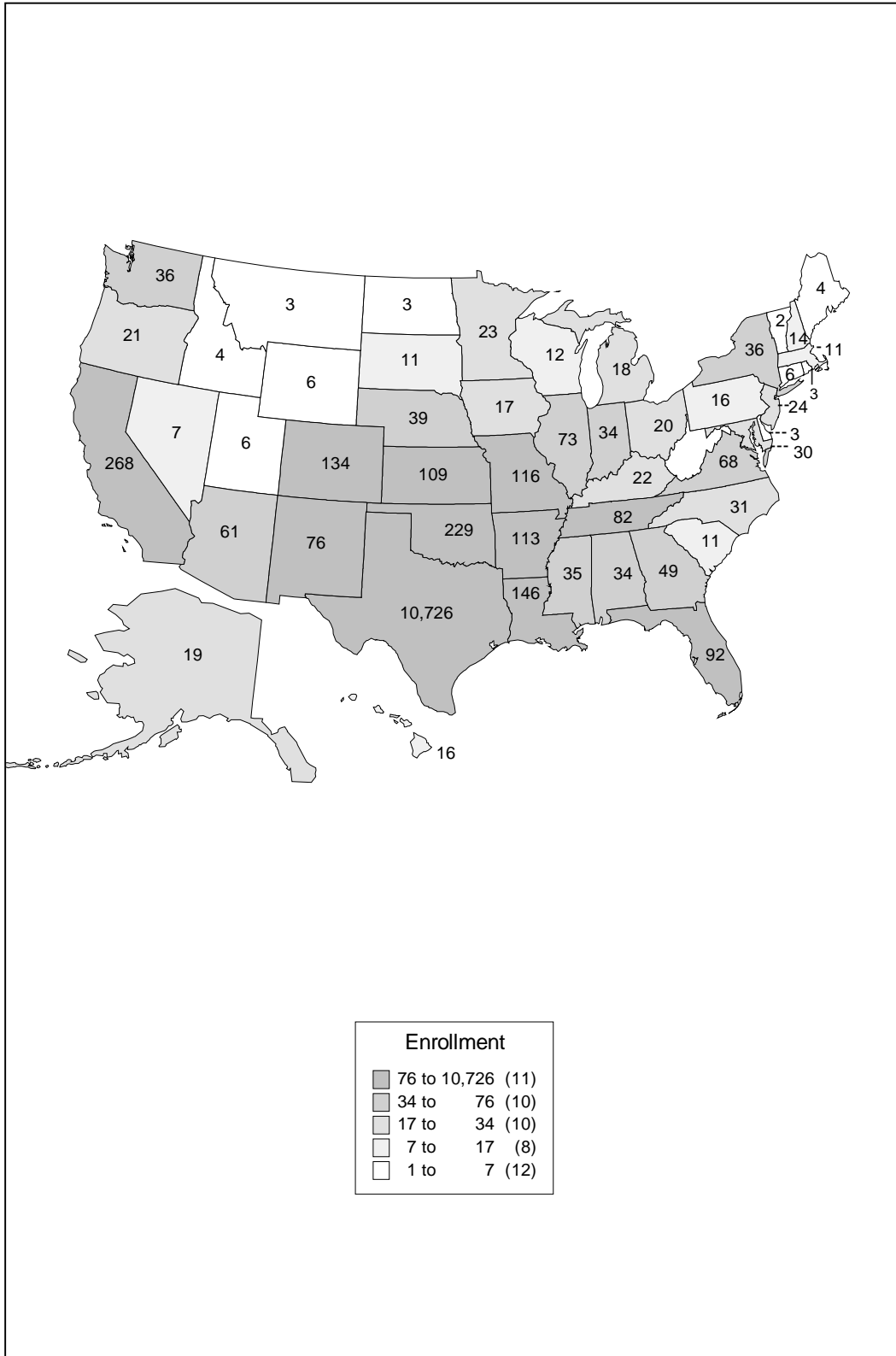
Source: ICUT.

**Texas Enrollment by County
Fall 1999**

	n		n		n		n		n
Anderson	29	Crane	1	Hartley	1	Madison	0	San Patricio	14
Andrews	3	Crockett	0	Haskell	0	Marion	1	San Saba	4
Angelina	31	Crosby	1	Hays	16	Martin	1	Schleicher	2
Aransas	1	Culberson	0	Hemphill	0	Mason	2	Scurry	5
Archer	0	Dallam	2	Henderson	24	Matagorda	13	Shackelford	0
Armstrong	0	Dallas	1,217	Hidalgo	94	Maverick	13	Shelby	9
Atascosa	9	Dawson	2	Hill	51	McCulloch	2	Sherman	0
Austin	9	De Witt	8	Hockley	3	McLennan	2,124	Smith	128
Bailey	2	Deaf Smith	1	Hood	14	McMullen	0	Somervell	5
Bandera	1	Delta	0	Hopkins	13	Medina	4	Starr	4
Bastrop	11	Denton	131	Houtson	13	Menard	2	Stephens	0
Baylor	0	Dickens	1	Howard	3	Midland	54	Sterling	0
Bee	3	Dimmit	2	Husdpeth	0	Milam	7	Stonewall	0
Bell	203	Donley	1	Hunt	28	Mills	0	Sutton	5
Bexar	528	Duval	1	Hutchinson	6	Mitchell	1	Swisher	0
Blanco	3	Eastland	5	Irion	1	Montague	3	Tarrant	735
Borden	0	Ector	30	Jack	5	Montgomery	224	Taylor	89
Bosque	31	Edwards	1	Jackson	6	Moore	8	Terrell	0
Bowie	25	El Paso	93	Jasper	15	Morris	6	Terry	1
Brazoria	79	Ellis	51	Jeff Davis	0	Motley	0	Throckmorton	0
Brazos	38	Erath	7	Jefferson	91	Nacagdoches	23	Titus	15
Brewster	2	Falls	22	Jim Hogg	0	Navarro	28	Tom Green	19
Briscoe	1	Fannin	8	Jlm Wells	5	Newton	2	Travis	283
Brooks	2	Fayette	6	Johnson	72	Nolan	5	Trinity	2
Brown	11	Fisher	1	Jones	6	Nueces	91	Tyler	1
Burleson	4	Floyd	0	Karnes	4	Ochiltree	0	Upshur	18
Burnett	12	Foard	0	Kaufman	31	Oldham	1	Upton	1
Caldwell	5	Fort Bend	237	Kendall	33	Orange	18	Uvalde	4
Calhoun	6	Franklin	8	Kenedy	0	Palo Pinto	5	Val Verde	5
Callahan	3	Freestone	11	Kent	0	Panola	6	Van Zandt	8
Cameron	58	Frio	0	Kerr	20	Parker	34	Victoria	27
Camp	1	Gaines	2	Kimble	0	Parmer	0	Walker	14
Carson	0	Galveston	105	King	0	Pecos	1	Waller	8
Cass	7	Garza	0	Kinney	1	Polk	9	Ward	5
Castro	0	Gillespie	14	Kleberg	5	Potter	76	Washington	18
Chambers	4	Glasscock	0	Knox	0	Presidio	0	Webb	23
Cherokee	22	Goliad	1	La Salle	0	Rains	2	Wharton	12
Childress	1	Gonzales	4	Lamar	5	Randall	8	Wheeler	0
Clay	1	Gray	5	Lamb	1	Reagan	2	Wichita	17
Cochran	0	Grayson	16	Lampasas	12	Real	1	Wilbarger	6
Coke	0	Gregg	134	Lavaca	7	Red River	1	Willacy	7
Coleman	5	Grimes	1	Lee	8	Reeves	1	Williamson	133
Collin	431	Guadalupe	31	Leon	1	Refugio	1	Wilson	12
Collingsworth	0	Hale	11	Liberty	28	Roberts	0	Winkler	1
Colorado	2	Hall	0	Limestone	35	Robertson	6	Wise	9
Comal	27	Hamilton	3	Lipscomb	0	Rockwall	67	Wood	10
Caomanche	4	Hansford	0	Live Oak	3	Runnels	2	Yoakum	0
Concho	0	Hardeman	2	Llano	4	Rusk	16	Young	8
Cooke	10	Hardin	12	Loving	0	Sabine	1	Zapata	0
Coryell	36	Harris	1,601	Lubbock	36	San Augustine	1	Zavala	1
Cottle	0	Harrison	30	Lynn	1	San Jacinto	2	Total	10,726

Source: ICUT.

**Enrollment by State
Fall 1999**



Source: ICUT.

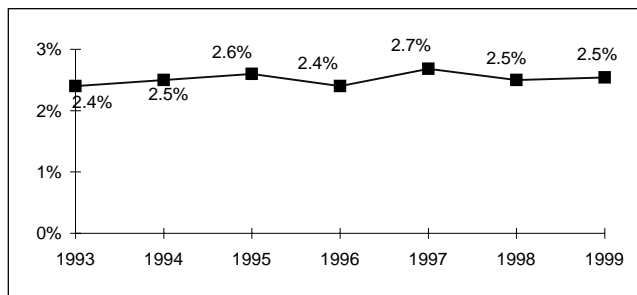
Countries Represented by Nonresident Aliens
Fall 1993 - Fall 1999

Fall	1993	1994	1995	1996	1997	1998	1999		Fall	1993	1994	1995	1996	1997	1998	1999
Albania	-	-	-	1	-	-	-		Lebanon	2	1	1	1	-	-	-
Argentina	2	2	1	1	-	-	-		Macao	-	-	1	1	-	-	-
Australia	1	2	3	7	5	5	3		Malaysia	2	3	2	-	1	4	2
Austria	1	-	-	-	-	-	1		Mali	-	-	-	-	-	-	2
Bahamas	-	-	-	-	-	-	1		Mauritius	-	-	-	-	1	1	1
Bangladesh	1	-	-	2	3	4	3		Mexico	15	19	15	18	15	9	6
Barbados	1	-	-	-	-	-	-		Moldova	-	-	1	-	-	-	-
Belgium	-	-	-	-	2	2	2		Morocco	-	1	-	-	-	-	-
Belize	-	-	1	1	3	1	1		Nepal	-	-	-	-	-	1	1
Bolivia	1	-	-	-	1	-	-		Netherlands	3	3	2	3	1	1	1
Brazil	7	5	1	1	2	1	4		New Zealand	-	-	-	1	1	1	1
British Virgin Islands	-	-	-	1	1	1	1		Nicaragua	-	-	-	-	-	1	-
Bulgaria	4	6	4	5	7	8	6		Nigeria	5	5	3	3	4	8	8
Byelarus	-	1	1	-	-	-	-		North Mariana Isle	-	-	-	-	-	2	1
Canada	6	8	13	11	12	16	15		Norway	11	8	8	5	5	3	-
Cayman Islands	3	1	-	1	2	-	-		Pakistan	1	1	2	5	1	1	9
Chile	3	5	3	2	2	2	2		Panama	6	7	4	5	5	1	1
China	49	43	41	49	56	56	62		Paraguay	1	1	-	-	-	-	-
Columbia	4	5	9	6	7	7	3		Philippines	2	1	-	-	-	1	-
Coral Sea Isle Terr.	-	-	-	-	-	1	1		Poland	-	2	4	4	4	2	2
Costa Rica	4	4	2	2	3	3	4		Romania	-	-	2	2	5	4	5
Croatia	-	-	-	-	-	1	1		Russia	5	4	2	6	3	1	3
Cyprus	-	1	-	-	-	-	-		Rwanda	-	1	1	1	-	-	1
Czech Republic	-	1	2	3	3	3	-		Saudi Arabia	-	-	1	-	-	-	1
Denmark	1	-	-	-	-	-	-		Senegal	-	-	-	-	-	1	1
Ecuador	1	-	-	-	-	1	-		Singapore	4	5	3	1	2	2	2
El Salvador	1	2	-	1	1	-	-		Slovakia	1	1	1	1	1	1	-
Eritrea	-	-	-	1	1	-	-		Slovenia	-	-	-	-	-	1	2
Estonia	1	1	1	-	1	-	-		Somalia	-	-	-	-	-	-	1
Ethiopia	3	3	-	1	-	-	1		South Africa	1	3	1	2	3	3	2
Finland	1	-	1	1	2	1	1		Soviet Union	-	-	-	-	-	1	2
France	3	12	6	6	4	4	3		Spain	3	4	5	4	3	2	2
Germany	4	4	4	-	4	3	3		Sri Lanka	4	4	2	2	5	4	5
Ghana	3	-	2	1	1	-	-		Sudan	1	1	1	1	-	-	-
Greece	3	2	2	-	-	-	-		Sweden	-	1	4	4	3	5	7
Guatemala	1	1	2	1	-	-	-		Switzerland	2	-	-	1	4	4	3
Honduras	4	4	4	6	7	4	2		Taiwan	27	19	16	18	31	29	39
Hong Kong*	17	14	14	11	-	-	-		Tanzania	1	1	-	-	-	-	-
Hungary	-	-	-	-	2	3	3		Thailand	4	6	6	7	8	5	8
Iceland	-	-	-	-	-	2	-		Togo	-	-	-	1	1	1	1
India	23	23	15	20	17	21	24		Trinidad/Tobago	1	2	2	1	1	-	-
Indonesia	6	4	4	10	9	11	11		Turkey	1	1	1	-	-	-	2
Iran	1	-	-	-	-	-	-		Uganda	1	1	1	1	-	-	-
Ireland	-	-	-	1	-	-	1		Ukraine	1	1	2	2	1	-	1
Israel	1	-	-	-	-	-	-		United Arab Emirates	1	1	2	1	-	1	1
Italy	2	1	2	1	1	-	1		United Kingdom	6	5	8	11	7	9	6
Jamaica	2	1	1	-	1	2	3		Uzbekistan	-	2	3	2	-	-	-
Japan	14	14	16	14	11	12	17		Venezuela	4	5	5	3	4	1	4
Jordan	-	-	2	-	-	1	-		Yugoslavia	-	-	-	1	1	-	-
Kazakhstan	-	-	-	2	2	-	-		Zambia	-	-	1	1	1	-	-
Kenya	1	3	4	4	3	2	3		Zimbabwe	-	-	2	1	1	-	-
Korea	7	13	14	18	33	21	20		Total	303	306	290	313	332	312	339

*Beginning Fall 1997, Hong Kong counted in People's Republic of China.

Source: International Programs Report

Percentage of Nonresident Aliens, Fall 1993 - Fall 1999



Source: International Programs Report

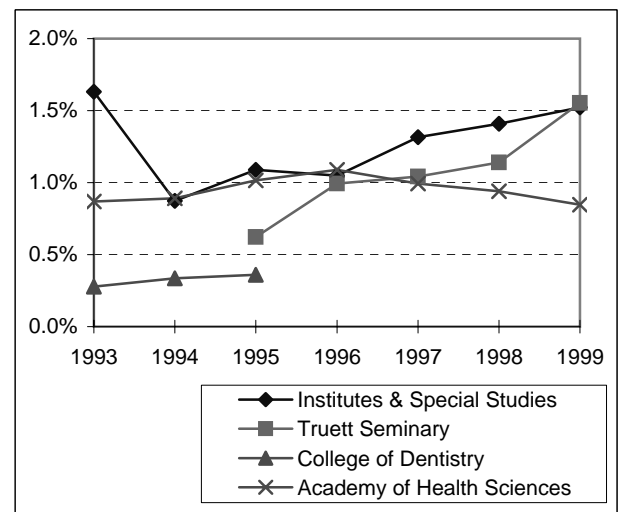
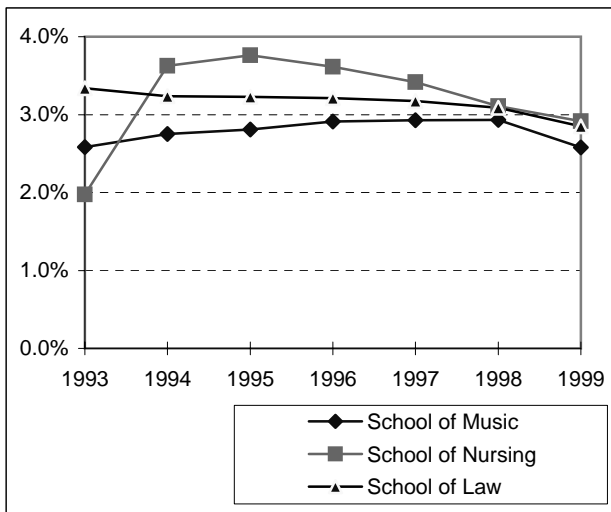
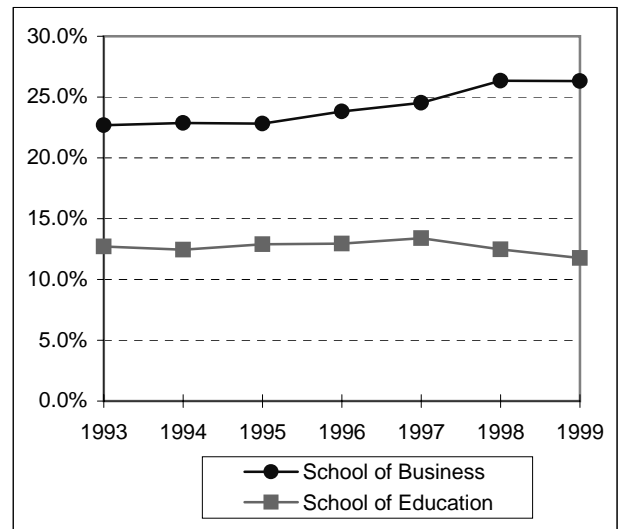
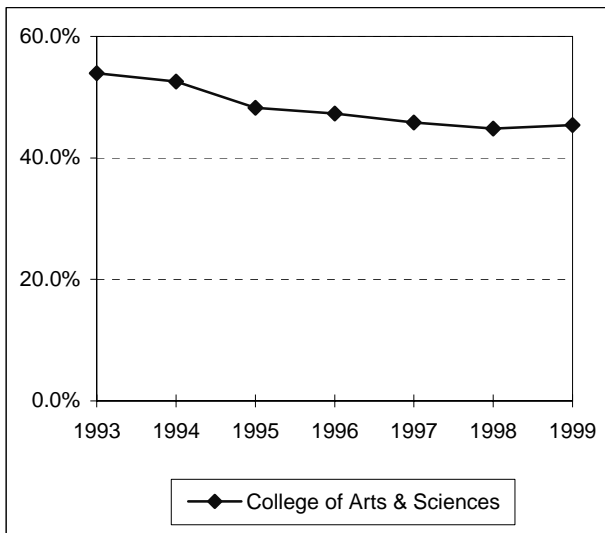
**Enrollment by Unit
Fall 1993 - Fall 1999**

	Fall	1993	1994	1995	1996	1997	1998	1999
College of Arts & Sciences		6,575	6,433	5,891	5,862	5,718	5,823	6,056
School of Business		2,767	2,798	2,785	2,950	3,059	3,421	3,508
School of Education		1,550	1,524	1,574	1,604	1,672	1,619	1,568
School of Engineering & Computer Sci.		-	-	315	348	370	460	542
School of Music		315	337	343	361	365	381	344
School of Nursing		241	444	459	448	426	404	389
Institutes & Special Studies		199	107	133	130	164	183	203
Graduate School		-	-	64	32	48	25	24
School of Law		407	396	394	398	396	401	380
Truett Seminary		-	51	76	123	130	148	207
College of Dentistry		34	41	44	-	-	-	-
Academy of Health Sciences		106	109	124	135	124	122	113
TOTAL		12,194	12,240	12,202	12,391	12,472	12,987	13,334

Notes:

1. Classification of pre-business majors was modified in Fall 1988, providing for two categories of students: *Pre-Business (in Business)* and *Pre-Business (in Arts and Sciences)*. Prior to this time all Pre-Business majors were counted in the College of Arts and Sciences. In Fall 1993, the Pre-Business (in Arts & Sciences) category was discontinued, and all Pre-Business students are now counted in the School of Business.
2. In the Fall of 1989 the University School was identified as a unit. In Fall 1992, the University School was abolished. The programs previously housed in the University School (with the exception of Environmental Studies, Gerontology, and Museum Studies) are now housed in "Institutes and Special Studies."
3. Prior to Fall 1993, Pre-Education students were counted in the College of Arts and Sciences. They are now counted in the School of Education.
4. Prior to Fall 1994, Pre-Nursing students were counted in the College of Arts and Sciences. They are now counted in the School of Nursing.
5. The School of Engineering & Computer Science was formed in 1995.
6. Beginning in 1995, the enrollment for the Graduate School reflects students classified as "No Major."
7. Programs housed in the College of Dentistry were transferred to Texas A&M University in Fall 1996.

**Enrollment Percentage by Unit
Fall 1993 - Fall 1999**



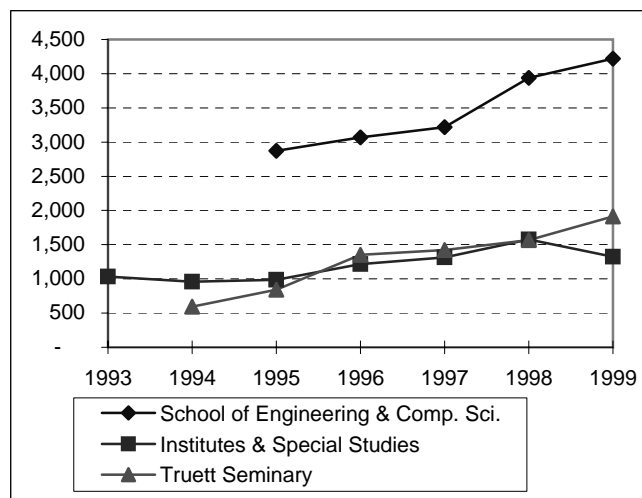
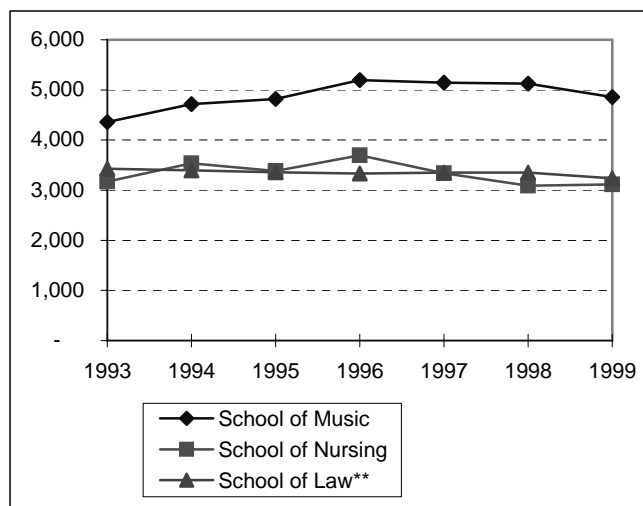
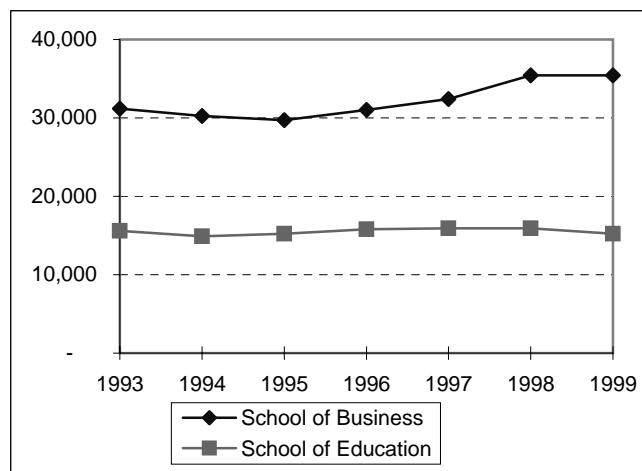
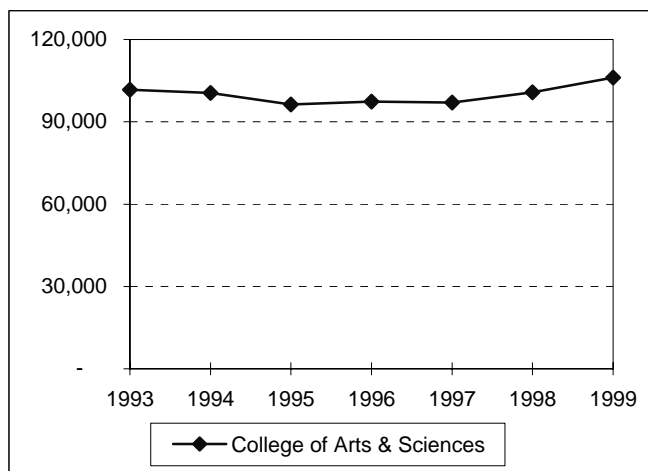
	Fall 1993	1994	1995	1996	1997	1998	1999
College of Arts & Sciences	53.9%	52.6%	48.3%	47.3%	45.8%	44.8%	45.4%
School of Business	22.7%	22.9%	22.8%	23.8%	24.5%	26.3%	26.3%
School of Education	12.7%	12.5%	12.9%	12.9%	13.4%	12.5%	11.8%
School of Engineering & Computer Sci.				2.8%	3.0%	3.5%	4.1%
School of Music	2.6%	2.8%	2.8%	2.9%	2.9%	2.9%	2.6%
School of Nursing	2.0%	3.6%	3.8%	3.6%	3.4%	3.1%	2.9%
Institutes & Special Studies	1.6%	0.9%	1.1%	1.0%	1.3%	1.4%	1.5%
Graduate School				0.3%	0.4%	0.2%	0.2%
School of Law	3.3%	3.2%	3.2%	3.2%	3.2%	3.1%	2.8%
Truett Seminary			0.6%	1.0%	1.0%	1.1%	1.6%
College of Dentistry	0.3%	0.3%	0.4%				
Academy of Health Sciences	0.9%	0.9%	1.0%	1.1%	1.0%	0.9%	0.8%

See Notes, page 14.

Source: IRT.

**Student Credit Hours by Unit*
Waco Campus
Fall 1993 - Fall 1999**

	Fall	1993	1994	1995	1996	1997	1998	1999
College of Arts & Sciences		101,633	100,562	96,348	97,393	97,007	100,794	106,150
School of Business		31,189	30,244	29,697	31,037	32,418	35,429	35,429
School of Education		15,609	14,897	15,243	15,793	15,934	15,930	15,225
School of Engineering & Comp. Sci.				2,870	3,067	3,218	3,938	4,219
School of Music		4,358	4,714	4,818	5,197	5,147	5,123	4,856
School of Nursing		3,173	3,539	3,381	3,693	3,337	3,089	3,114
Institutes & Special Studies		1,035	961	989	1,217	1,316	1,576	1,324
School of Law**		3,426	3,397	3,356	3,330	3,353	3,353	3,238
Truett Seminary			593	841	1,351	1,420	1,568	1,912
TOTAL		160,423	158,907	157,543	162,078	163,150	170,800	175,467



*BIC courses have been credited to the department of the instructor. See additional notes on page 14.

**Quarter hours converted to semester hours.

Retention of First-Time Freshman Classes Entering Fall 1987 - Fall 1998

First-Time Freshman Class of:	After 1 year		After 2 years		After 3 years			After 4 years			After 5 years			After 6 years		
	Cont.	Drop.	Cont.	Drop.	Cont.	Drop.	Grad.	Cont.	Drop.	Grad.	Cont.	Drop.	Grad.	Cont.	Drop.	Grad.
1987	85.0%	15.0%	75.6%	24.4%	71.7%	27.1%	1.2%	24.2%	28.2%	47.6%	3.4%	28.3%	68.3%	1.1%	28.2%	70.7%
1988	84.0%	16.0%	75.5%	24.5%	72.5%	26.5%	1.0%	29.8%	28.3%	41.9%	3.3%	28.5%	68.2%	0.8%	27.9%	71.3%
1989	85.7%	14.3%	74.8%	25.2%	71.2%	27.7%	1.1%	28.3%	28.9%	42.8%	3.9%	28.9%	67.2%	1.2%	28.8%	70.0%
1990	84.1%	15.9%	73.0%	27.0%	69.8%	29.0%	1.2%	28.1%	29.6%	42.3%	4.2%	31.2%	64.6%	1.6%	29.4%	69.0%
1991	84.0%	16.0%	74.5%	25.5%	70.7%	28.2%	1.1%	26.5%	29.6%	43.9%	3.8%	29.5%	66.7%	1.3%	29.0%	69.7%
1992	81.9%	18.1%	71.5%	28.5%	67.2%	31.5%	1.4%	28.4%	32.3%	39.3%	4.8%	32.0%	63.2%	0.9%	32.2%	66.9%
1993	81.6%	18.4%	72.0%	28.0%	68.4%	30.4%	1.2%	27.5%	32.3%	40.2%	4.5%	32.3%	63.2%	1.3%	31.8%	66.9%
1994	82.2%	17.8%	72.3%	27.7%	68.5%	30.1%	1.4%	27.0%	31.1%	41.9%	4.9%	31.9%	63.2%			
1995	82.9%	17.1%	76.0%	24.0%	71.4%	27.2%	1.4%	28.8%	28.3%	42.9%						
1996	83.4%	16.6%	74.6%	25.4%	72.1%	27.0%	0.9%									
1997	82.2%	17.8%	73.2%	26.8%												
1998	81.6%	18.4%														
Average	83.2%	16.8%	73.9%	26.1%	70.3%	28.5%	1.2%	27.6%	29.8%	42.5%	4.1%	30.3%	65.6%	1.2%	29.6%	69.2%

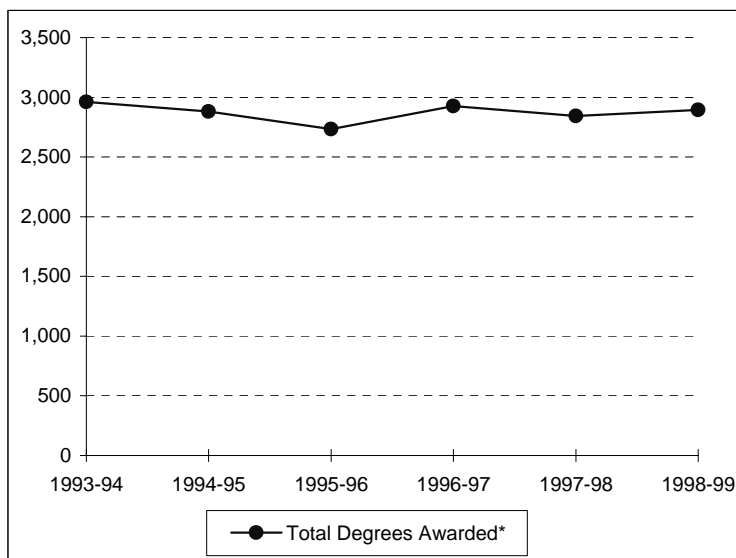
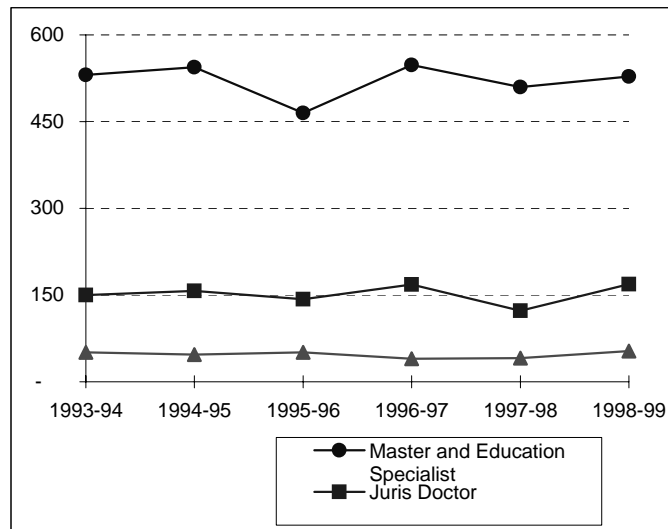
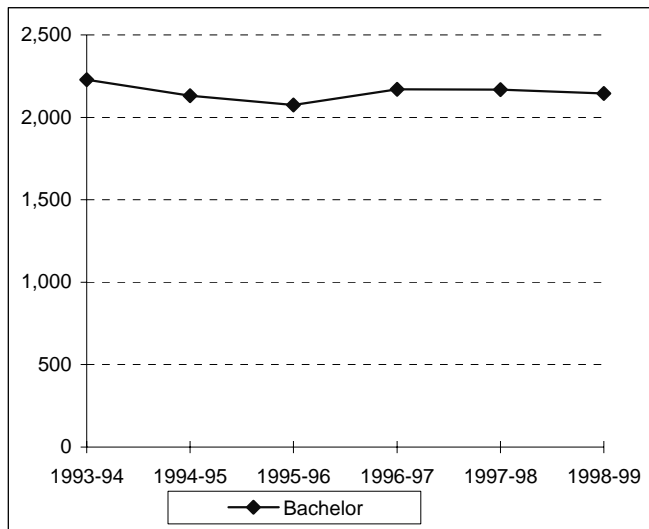
Distribution of Degrees*
1993-94 through 1998-99

	1993-94	1994-95	1995-96	1996-97	1997-98	1998-99
Bachelor of:						
Arts	1044	1021	975	927	880	883
Business Administration	800	708	679	816	897	846
Fine Arts	17	31	18	22	17	20
Music	34	18	18	24	29	28
Music Education	13	18	18	20	23	19
Bachelor of Science:						
Science	120	128	105	141	147	131
Aviation Sciences		2	6	4	8	5
Computer Science			18	16	19	26
Education	369	316	330	382	355	365
Engineering	18	30	29	21	21	27
Engineering Science	1					
Family & Consumer Sciences	54	47	51	51	38	39
Nursing	90	123	112	102	106	98
TOTAL BACHELOR DEGREES	2560	2442	2359	2526	2540	2487
Master of:						
Accountancy					4	10
Arts	89	85	75	87	74	63
Business Administration	100	137	108	117	106	125
Business Admin. in International Management	5	4	1	5	1	1
Christian Theology			1	1		
Clinical Gerontology	9	10	3	4	5	3
Divinity				33	13	25
Environmental Studies	4	3	3	6	2	5
Fine Arts	1	1	1	2		4
Health Administration	30	46	43	51	66	46
International Journalism	18	7	1	1	2	1
International Management	9	7	4	2	1	1
Music	25	28	21	26	23	24
Physical Therapy	21	24	23	24	18	20
Public Policy and Administration	10	7	10	1	7	1
Science	44	46	43	47	41	38
Taxation	10	16	15	9	7	10
Master of Science in:						
Clinical Psychology				20	8	12
Communication Sciences & Disorders	29	25	28	33	38	44
Dentistry	25	10				
Economics	6	0	3	3	5	6
Education	91	74	68	65	69	72
Gerontology	7	13	9	9	8	8
Information Systems						6
Limnology		1		3	1	
Nursing	3	1	1	1	11	2
TOTAL MASTER'S DEGREES	536	545	461	550	510	527
TOTAL EDUCATION SPECIALIST DEGREES						1
TOTAL JURIS DOCTOR DEGREES	150	157	143	168	123	169
Doctor of:						
Education	18	12	22	15	17	15
Philosophy	19	25	19	19	13	27
Psychology	11	10	10	6	11	11
TOTAL DOCTORAL DEGREES	48	47	51	40	41	53
TOTAL DEGREES AWARDED	3294	3191	3014	3284	3214	3237

*Degree information on this page is reported beginning with the Fall semester and including the following Spring and Summer terms. An individual graduate with multiple majors is counted as a whole graduate in each major area of study (i.e., duplicated count).

Source: Statistical Report: "Statistics on Enrollment and Degrees Awarded" (1993-94 through 1997-98), IRT (1998-99).

Summary of Degrees Awarded*
1993-94 through 1998-99



Degree Level:	1993-94	1994-95	1995-96	1996-97	1997-98	1998-99
Bachelor	2,229	2,132	2,075	2,170	2,169	2,145
Master and Education Specialist	531	544	465	548	510	528
Juris Doctor	150	157	143	168	123	169
Doctor	51	47	51	40	41	53
Total Degrees Awarded*	2,961	2,880	2,734	2,926	2,843	2,895

*The information on this page indicates the number of degree recipients (i.e., unduplicated count). Degree information on this page is reported beginning with the Fall semester and including the following Spring and Summer terms.

**Degree Programs
(as of May 2000)**

Accounting (BBA)	Communication Sci. & Disorders (BA)	Fashion Design (BSFCS)
Accounting (MAcc)	Communication Sci. & Disorders (MSCSD)	Fashion Merchandising (BA)
Administrative Information Systems (BBA)	Communication Specialist (BA)	Fashion Merchandising (BSFCS)
American Studies (BA)	Communication Studies (MA)	Finance (BBA)
American Studies (MA)	Community Health (BSEd)	Financial Services / Planning (BBA)
Anthropology (BA)	Composition (BM)	Forensic Science (BS)
Applied Mathematics (BS)	Composition (MM)	Forestry (BA)
Applied Music (BM)	Computer Information Systems (BBA)	Forestry (BS)
Applied Sociology (PhD)	Computer Information Systems-CIS (BSEd)	French (BA)
Archaeology (BA)	Computer Information Systems-ISY (BSEd)	French (BSEd)
Architecture (BA)	Computer Science (BA)	General Family & Consumer Sci. (BA)
Art (BFA)	Computer Science (BSCS)	General Family & Consumer Sci. (BSFCS)
Art (BSEd)	Computer Science (MS)	General Studies in HHPR (BSEd)
Art History (BA)	Conducting (MM)	Generic Special Education (BSEd)
Asian Studies (BA)	Curriculum & Instruction (EdD)	Geography (BS)
Aviation Sciences (BSAvSc)	Curriculum & Instruction (EdS)	Geology (BS)
Basic Business (BBA)	Curriculum & Instruction (MA)	Geology (MS)
Biblical & Related Languages (BA)	Curriculum & Instruction (MSEd)	Geology (PhD)
Biochemistry (BA)	Dentistry (BA)	Geophysics (BS)
Biochemistry (BS)	Dentistry (BS)	German (BA)
Bioinformatics (BSI)	Design (BFA)	German (BSEd)
Biology (BA)	Directing (MFA)	Gerontology (MSG)
Biology (BS)	Earth Science (BA)	Greek (BA)
Biology (BSEd)	Earth Science (BSEd)	Health (BSEd)
Biology (MA)	Earth Science (MA)	Health Care Administration (MHA)
Biology (MS)	Economics (BA)	Health / Fitness Studies (BSEd)
Biology (PhD)	Economics (BBA)	Health, Human Performance & Recreation (MSEd)
Biomedical Studies (MS)	Economics (BS)	Health Science Studies (BSEd)
Biomedical Studies (PhD)	Economics (BSEd)	History (BA)
Business Administration (BA)	Economics (MSEco)	History (BSEd)
Business Administration (BSEd)	Education (MA)	History (MA)
Business Administration (MBA)	Educational Administration (EdD)	Human Performance (BSEd)
Business - Broadcasting (BBA)	Educational Administration (EdS)	Human Resources Management (BBA)
Business - Journalism (BBA)	Educational Administration (MSEd)	Information Systems Management (MBA)
Chemistry (BA)	Educational Psychology (EdS)	Information Systems (MSIS)
Chemistry (BS)	Educational Psychology (MA)	Instrumental Music (BME)
Chemistry (BSEd)	Educational Psychology (MSEd)	Interdisciplinary Studies (BSEd)
Chemistry (MS)	Educational Psychology (PhD)	Interior Design (BA)
Chemistry (PhD)	Electrical Engineering (BSE)	Interior Design (BSFCS)
Child & Family Studies (BA)	Engineering (BSE)	International Business (BBA)
Child & Family Studies (BSFCS)	English (BA)	International Economics (MA)
Choral Music (BME)	English (BSEd)	International Economics (MS)
Church Music (BM)	English (MA)	International Journalism (MIJ)
Church Music (MM)	English (PhD)	International Management (MBA)
Church Recreation (BSEd)	Entrepreneurship (BBA)	International Management (MBAIM)
Church-State Studies (MA)	Environmental Biology (MS)	International Management (MIM)
Church-State Studies (PhD)	Environmental Studies (BA)	International Relations (MA)
Classics (BA)	Environmental Studies (BS)	International Studies (BA)
Clinical Gerontology (MCG)	Environmental Studies (MES)	Journalism (BA)
Clinical Psychology (MSCP)	Environmental Studies (MS)	Journalism (BSEd)
Clinical Psychology (PsyD)	Family Nurse Practitioners (MSN)	Journalism (MA)
Communication Disorders (MA)	Fashion Design (BA)	Language and Linguistics (BA)

Latin American Studies (BA)	Piano Accompanying (MM)
Latin (BA)	Piano Pedagogy & Performance (MM)
Latin (BSEd)	Political Science (BA)
Law (BA)	Political Science (BSEd)
Law (BBA)	Political Science (MA)
Law (JD)	Professional Writing (BA)
Life - Earth Science (BSEd)	Psychology (BA)
Limnology (MSL)	Psychology (BS)
Management (BBA)	Public Administration (BBA)
Marketing (BBA)	Public Policy & Administration (MPPA)
Mathematics (BA)	Quantitative Business Analysis (BBA)
Mathematics (BS)	Reading (BSEd)
Mathematics (BSEd)	Real Estate (BBA)
Mathematics (MS)	Recreation (BSEd)
Mechanical Engineering (BSE)	Regional / Urban Studies (BBA)
Medical Technology & Biology (BS)	Religion (BA)
Medicine (BA)	Religion (MA)
Medicine (BS)	Religion (PhD)
Ministry (DMin)	Risk Management and Insurance (BBA)
Museum Studies (BA)	Russian (BA)
Museum Studies (BS)	Science (BSEd)
Museum Studies (MA)	Slavic and East European Studies (BA)
Music (BA)	Social Studies (BSEd)
Music Education (MM)	Social Work (BA)
Music History & Literature (BM)	Social Work (MSW)
Music History & Literature (MM)	Sociology (BA)
Music Theory (MM)	Sociology (BSEd)
Neonatal Nurse Practitioner (MSN)	Sociology (MA)
Neuroscience (BS)	Spanish (BA)
Neuroscience (MA)	Spanish (BSEd)
Neuroscience (PhD)	Spanish (MA)
Nursing Admin. & Management (MSN)	Speech Communication (BA)
Nursing (BSN)	Speech Communications (BSEd)
Nutrition Sciences (BA)	Speech & Language Therapy (BSEd)
Nutrition Sciences (BS)	Statistics (MA)
Nutrition Sciences (BSFCS)	Statistics (PhD)
Operations Management (BBA)	Studio Art (BA)
Optometry (BA)	Studio Art (BFA)
Optometry (BS)	Taxation (MT)
Pedagogy (BM)	Telecommunication (BA)
Performance (BFA)	Theater Arts (BA)
Performance (MM)	Theater Arts (BSEd)
Philosophy (BA)	Theater Arts (MA)
Philosophy (MA)	Theology (MDiv)
Physical Science (BSEd)	Theory (BM)
Physical Therapy (MPT)	University Scholars (BA)
Physics (BA)	
Physics (BS)	
Physics (BSEd)	
Physics (MA)	
Physics (MS)	
Physics (PhD)	

**Full-Time Faculty Positions
Fall 1993 - Fall 1999**

Rank	Fall 1993		Fall 1994		Fall 1995		Fall 1996		Fall 1997		Fall 1998		Fall 1999	
	Male	Female	Male	Female	Male	Female	Male	Female	Male	Female	Male	Female	Male	Female
Professors:														
Number	197	29	194	27	199	33	198	33	201	34	205	35	203	35
Tenured	189	29	187	27	190	31	190	30	194	32	198	35	195	34
Associate Prof.:														
Number	91	40	93	43	87	41	82	41	84	43	89	46	91	49
Tenured	73	30	79	34	76	32	67	34	68	37	78	38	79	43
Assistant Prof:														
Number	53	50	59	53	68	49	71	51	67	55	73	52	77	52
Tenured	4	9	3	10	2	7	3	5	3	7	2	7	2	6
Instructors:														
Number	4	3	1	2	0	2	0	2	0	2	0	1	0	1
Tenured	0	1	0	1	0	1	0	1	0	1	0	1	0	1
Lecturers:														
Number	59	75	51	76	45	76	55	73	47	73	50	78	51	91
Total Number	404	197	398	201	399	201	406	200	399	207	417	212	422	228
Total Tenured	266	69	269	72	268	71	260	70	265	77	278	81	276	84

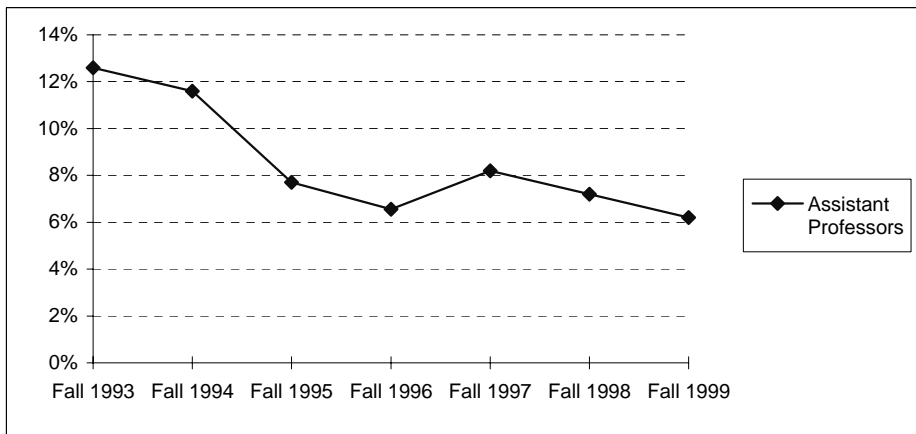
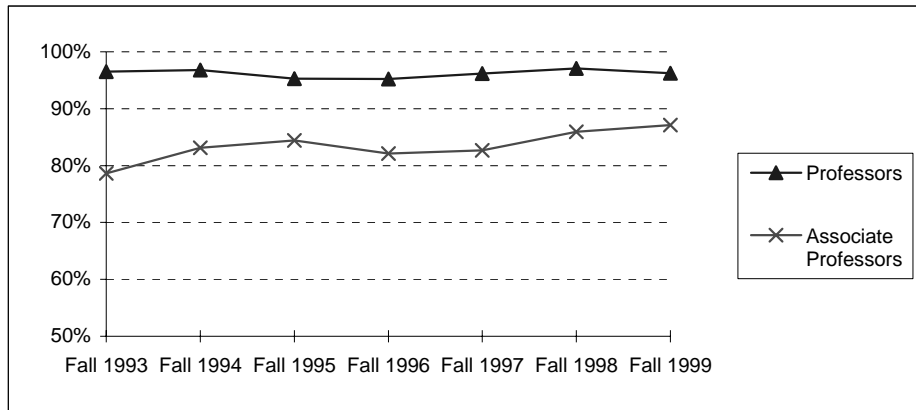
Source: AAUP, IRT

**Highest Degree Earned by Full-Time Faculty
Fall 1993 - Fall 1999**

	Fall 1993	Fall 1994	Fall 1995	Fall 1996	Fall 1997	Fall 1998	Fall 1999
Bachelor's	1	0	0	0	1	1	0
Master's	137	141	141	135	138	145	150
Doctoral	439	437	438	449	448	463	478
Professional	24	21	21	22	19	20	22
Total	601	599	600	606	606	629	650

Source: AAUP, IRT

**Percentage of Full-Time Faculty with Tenure
Fall 1993 - Fall 1999**



	Fall 1993	Fall 1994	Fall 1995	Fall 1996	Fall 1997	Fall 1998	Fall 1999
Professors	96.5%	96.8%	95.3%	95.2%	96.2%	97.1%	96.2%
Associate Professors	78.6%	83.1%	84.4%	82.1%	82.7%	85.9%	87.1%
Assistant Professors	12.6%	11.6%	7.7%	6.6%	8.2%	7.2%	6.2%
Instructors	14.3%	33.3%	50.0%	50.0%	50.0%	100.0%	100.0%
All Faculty	55.7%	56.9%	56.5%	54.5%	56.4%	57.1%	55.4%

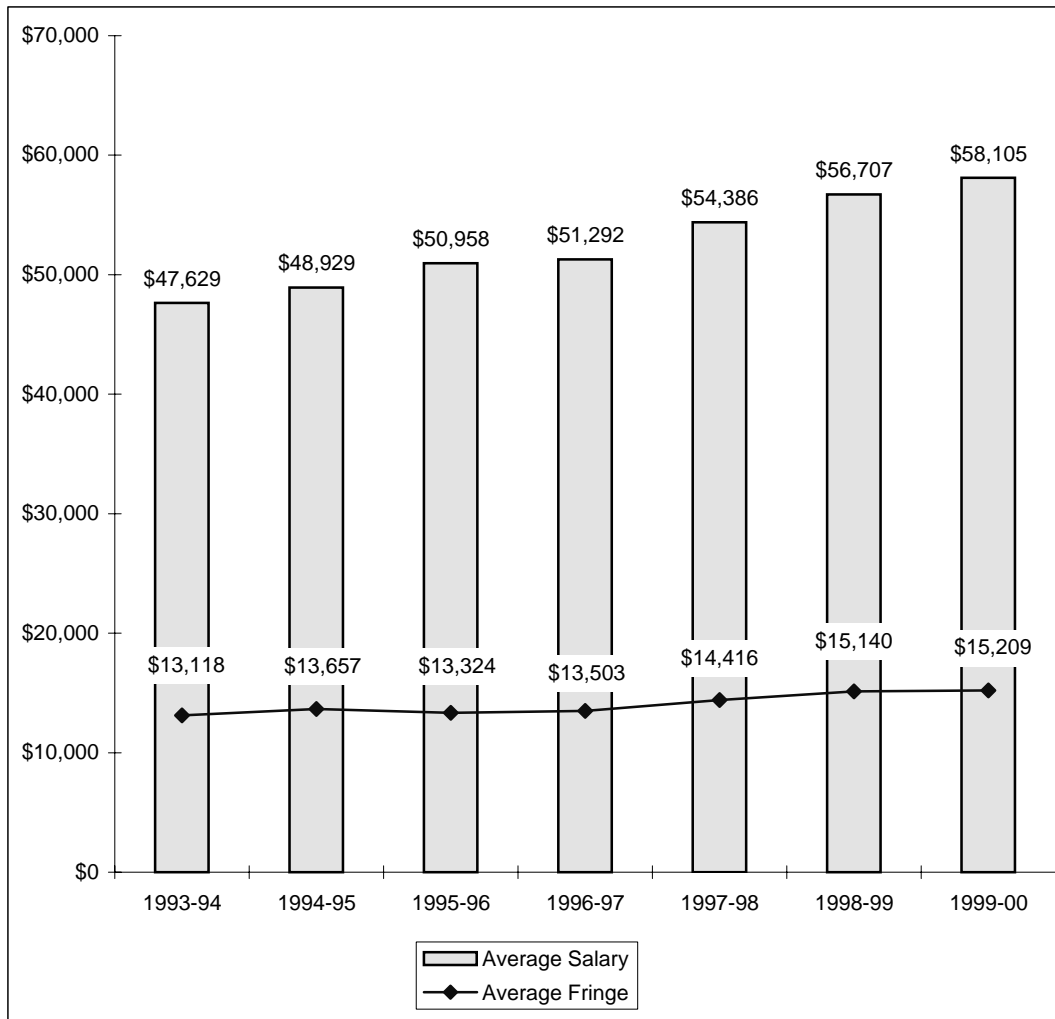
**Average Salaries of Full-Time Instructional Faculty
on Academic Year Contracts
Fall 1993 - Fall 1999**

Rank	Fall 1993		Fall 1994		Fall 1995		Fall 1996	
	Number in Rank	Average Salary	Number in Rank	Average Salary	Number in Rank	Average Salary	Number in Rank	Average Salary
Professor	226	\$61,864	221	\$63,599	232	\$65,450	231	\$67,094
Associate Professor	131	\$47,360	136	\$49,235	128	\$51,041	123	\$51,427
Assistant Professor	103	\$39,681	112	\$40,100	117	\$41,448	122	\$41,259
Instructor	7	\$34,609	3	\$43,662	2	*	2	*
Lecturer	134	\$30,671	127	\$30,984	121	\$32,504	128	\$32,473
All Ranks	601	\$47,629	599	\$48,929	600	\$50,958	606	\$51,292
Average Fringe		\$13,118		\$13,657		\$13,324		\$13,503
Fringe as a Percentage of Average Salary		27.5%		27.9%		26.1%		26.3%
Percentage Increase in Average Salary for Continuing Faculty		5.3%		5.3%		5.2%		3.3%

Rank	Fall 1997		Fall 1998		Fall 1999	
	Number in Rank	Average Salary	Number in Rank	Average Salary	Number in Rank	Average Salary
Professor	235	\$70,565	240	\$73,937	238	\$77,289
Associate Professor	127	\$54,382	135	\$56,977	140	\$58,365
Assistant Professor	122	\$42,459	125	\$44,193	129	\$45,423
Instructor	2	*	1	*	1	*
Lecturer	120	\$35,127	128	\$36,420	142	\$37,309
All Ranks	606	\$54,386	629	\$56,707	650	\$58,105
Average Fringe		\$14,416		\$15,140		\$15,209
Fringe as a Percentage of Average Salary		26.5%		26.7%		26.2%
Percentage Increase in Average Salary for Continuing Faculty		6.7%		4.6%		4.3%

*Data not displayed for two or less faculty.

**Average Compensation of Full-Time Instructional Faculty
on Academic Year Contracts
1993-94 through 1999-00**

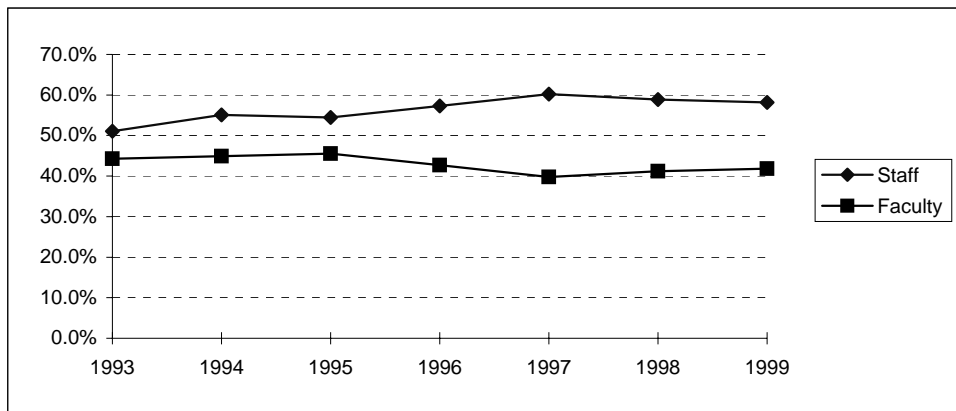


**Institutional Staff
Fall 1993 - Fall 1999**

	Fall	1993	1994	1995	1996	1997	1998	1999
Faculty:								
Full-Time		601	599	600	606	596	619	641
Part-Time		66	56	79	58	49	86	114
Chief Administrators		6	14	14	14	16	15	17
Other Administrators:								
Full-Time		21	62	60	60	90	95	97
Part-Time						1		
Professional (Non-Academic):								
Full-Time		36	18	18	18	42	38	39
Part-Time		2	2	2	3	0	0	0
Salaried Staff:								
Full-Time		338	348	371	424	440	455	453
Part-Time		16	10	15	18	22	21	21
Hourly Staff:								
Full-Time		298	288	275	288	292	310	349
Part-Time		53	61	56	66	74	74	74
Total		1507	1458	1490	1555	1622	1713	1805

Source: ICUT

**Percentage of Institutional Staff
Fall 1993 - Fall 1999**



	Fall	1993	1994	1995	1996	1997	1998	1999
Staff		51.1%	55.1%	54.4%	57.3%	60.2%	58.8%	58.2%
Faculty		44.3%	44.9%	45.6%	42.7%	39.8%	41.2%	41.8%

Source: ICUT

**Faculty* by Religious Affiliation
Fall 1993 - Fall 1999**

Fall	1993	1994	1995	1996	1997	1998	1999
Assembly of God	1	1	1	1	1	1	1
Baptist	304	309	306	302	294	307	315
Catholic	37	42	44	47	46	51	45
Church of Christ	13	12	13	12	16	16	15
Disciples of Christ	12	15	16	16	16	16	13
Episcopalian	40	39	38	40	45	47	49
Lutheran	35	35	36	38	34	35	38
Methodist	67	66	68	71	71	73	70
Non-Denominational	n/a	9	10	9	10	11	11
Presbyterian	40	44	39	40	40	39	36
Other / Unspecified	52	27	29	30	33	33	57
Total	601	599	600	606	606	629	650

*AAUP definition.

**Staff by Religious Affiliation
Fall 1993 - Fall 1999**

Fall	1993	1994	1995	1996	1997	1998	1999
Assembly of God	4	4	4	4	6	5	4
Baptist	408	433	448	475	507	493	484
Catholic	58	62	63	63	73	76	84
Church of Christ	24	21	24	24	25	26	30
Disciples of Christ	19	23	19	21	19	17	20
Episcopalian	19	19	20	15	17	17	17
Lutheran	26	25	29	29	30	27	33
Methodist	73	72	80	80	83	90	96
Non-Denominational	n/a	9	9	9	13	13	20
Presbyterian	6	8	11	12	13	17	17
Other / Unspecified	46	57	49	56	57	96	115
Total	683	733	756	788	843	877	920

**Tuition and Other Semester Charges
1993-94 through 1999-00**

	1993-94	1994-95	1995-96	1996-97	1997-98	1998-99	1999-00
Tuition per Semester Hour	\$215.00	\$232.00	\$258.00	\$269.00	\$288.00	\$308.00	\$329.00
Increase from Prior Year	7.5%	7.9%	11.2%	4.3%	7.1%	6.9%	6.8%
Application Fee	25.00	25.00	25.00	25.00	25.00	35.00	35.00
Applied Music Fee(1)	70.00	75.00	75.00	85.00	90.00	96.00	105.00
Change-of-Course Fee	20.00	20.00	20.00	20.00	20.00	20.00	20.00
Chapel-Forum Fee	10.00	10.00	10.00	10.00	10.00	15.00	15.00
Credit by Baylor Exam Fee	107.50	116.00	129.00	134.50	144.00	154.00	164.50
General Student Fee	285.00	300.00	320.00	335.00	385.00	427.00	490.00
Enrollment Deposit (2)	100.00	100.00	100.00	100.00	100.00	100.00	100.00
Lab/Course Fees (3)	25.00	25.00	25.00	25.00	25.00	25.00	25.00
Late Registration Fee (4)	20.00	20.00	20.00	20.00	20.00	20.00	20.00
Student Life Fee		1.00	1.00	1.00	1.00	1.00	1.00
Technology Fee						85.00	90.00
Vehicle Registration Fee (5)	70.00	70.00	70.00	90.00	95.00	120.00	145.00
Room	845.00	870.00	895.00	922.00	950.00	979.00	1,050.00
Increase from Prior Year	3.0%	3.0%	2.9%	3.0%	3.0%	3.1%	7.3%
Board (6)	1,030.00	1,060.00	1,085.00	1,113.00	1,170.00	1,205.00	1,240.00
Increase from Prior Year	3.0%	2.9%	2.4%	2.6%	5.1%	3.0%	2.9%

Increase in Semester Charges from 1993-94 to 1999-00:

Tuition per hour	53.0%
Room	24.3%
Board	20.4%

Notes:

(1) Supplemental charge per semester for one 30-minute lesson per week.

(2) In 1998, the General University Deposit became an Enrollment Deposit. The Enrollment Deposit is paid to assure enrollment place and is applied on the student's first semester bill.

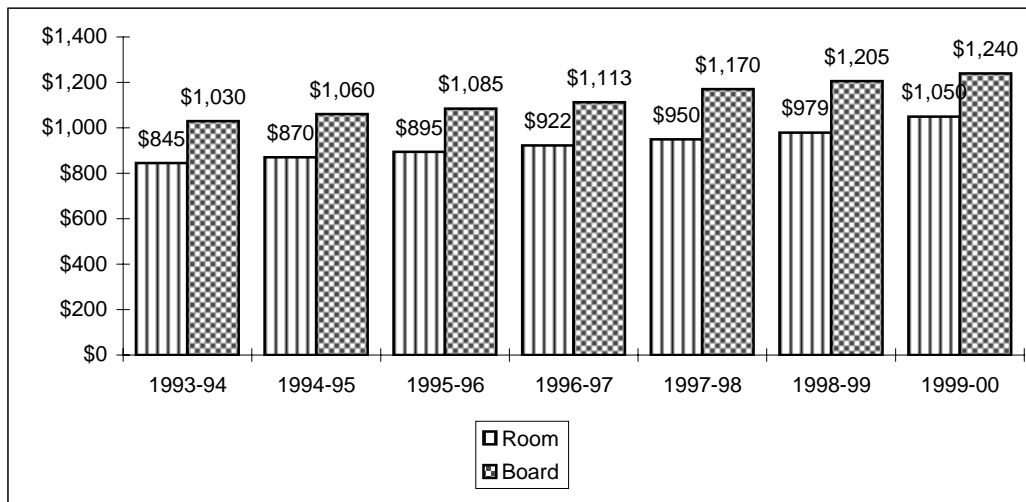
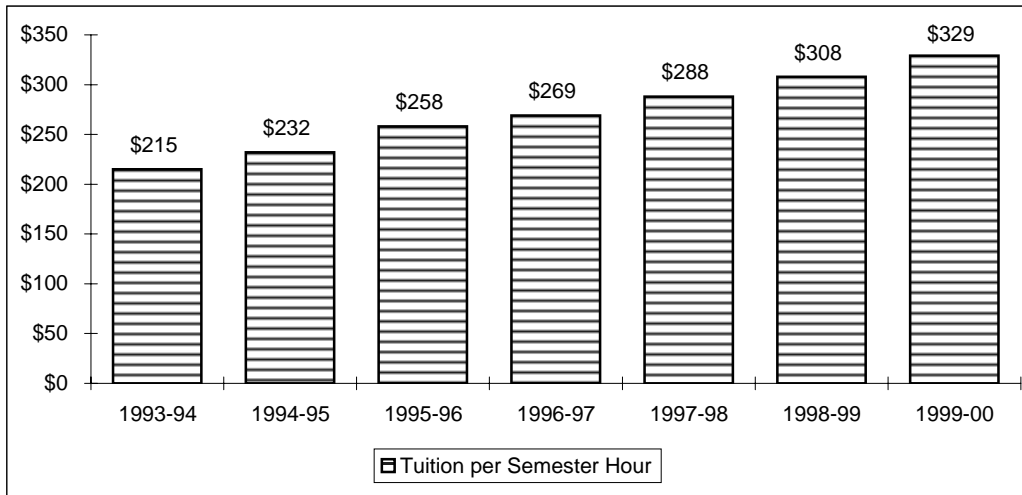
(3) Minimum lab fee is \$25; some courses may be higher.

(4) Fee is graduated: \$20.00 first through third class days, \$30.00 fourth through ninth class days, \$50.00 tenth class day and after.

(5) Annual automobile fee (September - August).

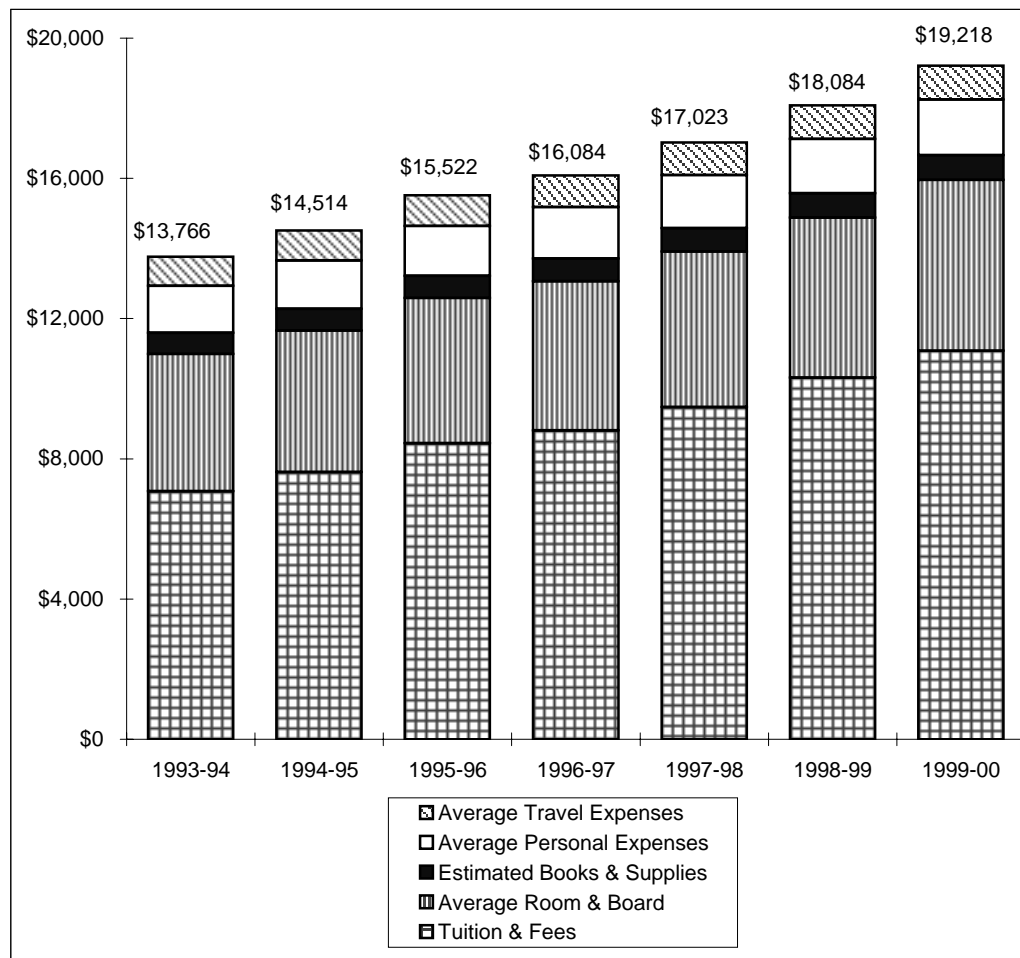
(5) Twenty meal plan, per semester, not including sales tax.

Tuition, Room and Board Charges 1993-94 through 1999-00



Annual Undergraduate Student Cost Profile 1993-94 through 1999-00

	1993-94	1994-95	1995-96	1996-97	1997-98	1998-99	1999-00
Tuition & Fees	\$7,070	\$7,624	\$8,444	\$8,806	\$9,478	\$10,316	\$11,082
Average Room & Board	3,920	4,034	4,140	4,254	4,433	4,566	4,874
Estimated Books & Supplies	600	616	634	652	670	690	702
Average Personal Expenses	1,346	1,386	1,426	1,468	1,512	1,556	1,586
Average Travel Expenses	830	854	878	904	930	956	974
Average Total Cost	\$13,766	\$14,514	\$15,522	\$16,084	\$17,023	\$18,084	\$19,218
Increase from Prior Year	5.1%	5.4%	6.9%	3.6%	5.8%	6.2%	6.3%



Operating Funds*
1995-96 through 1998-99

Sources of Revenues

	1995-96	1996-97	1997-98	1998-99
Tuition & Fees	\$95,631,950	\$101,979,942	\$111,333,824	\$131,549,785
Gifts & Private Grants	3,674,822	4,609,984	6,248,707	8,244,782
Baptist General Convention of Texas Appropriation	3,686,271	3,928,739	4,039,046	3,994,879
Endowment Income	10,454,210	11,159,003	12,098,349	12,111,256
Investment Income	1,792,538	1,930,310	2,212,007	2,364,681
Other Sources	9,526,460	9,199,834	10,292,257	9,599,477
Auxiliary Enterprises	25,912,697	29,497,606	32,582,644	35,561,127
Total Revenues	\$150,678,948	\$162,305,418	\$178,806,834	\$203,425,987

Sources of Revenues as a Percentage of Total Revenues

	1995-96	1996-97	1997-98	1998-99
Tuition & Fees	63.5%	62.8%	62.2%	64.6%
Gifts & Private Grants	2.4%	2.8%	3.5%	4.1%
Baptist General Convention of Texas Appropriation	2.4%	2.4%	2.3%	2.0%
Endowment Income	7.0%	6.9%	6.8%	6.0%
Investment Income	1.2%	1.2%	1.2%	1.2%
Other Sources	6.3%	5.7%	5.8%	4.7%
Auxiliary Enterprises	17.2%	18.2%	18.2%	17.4%
Total Revenues	100.0%	100.0%	100.0%	100.0%

*Due to a change in reporting, only the years 1995-96 through 1998-99 are shown.

**Operating Funds (Continued)*
1995-96 through 1998-99**

Expenditures by Function

	1995-96	1996-97	1997-98	1998-99
Instruction	\$63,714,510	\$64,887,596	\$69,394,793	\$73,484,863
Acad Support, Resrch & Pub Service	12,432,041	13,226,633	13,945,393	16,847,590
Student Services	10,129,853	10,569,350	9,473,902	9,152,085
Plant Operations & Maintenance	9,762,895	10,138,633	10,429,262	11,889,750
Institutional Support	14,519,229	17,944,285	18,169,021	23,709,606
Scholarships & Fellowships	10,275,992	11,606,819	12,954,165	15,630,383
Auxiliary Enterprises	24,031,521	26,926,149	30,842,634	35,375,307
Discretionary Transfers	5,795,124	6,984,749	13,572,228	17,318,040
Total Expenditures	150,661,165	162,284,214	178,781,398	203,407,624
Excess Revenues	\$17,783	\$21,204	\$25,436	\$18,363

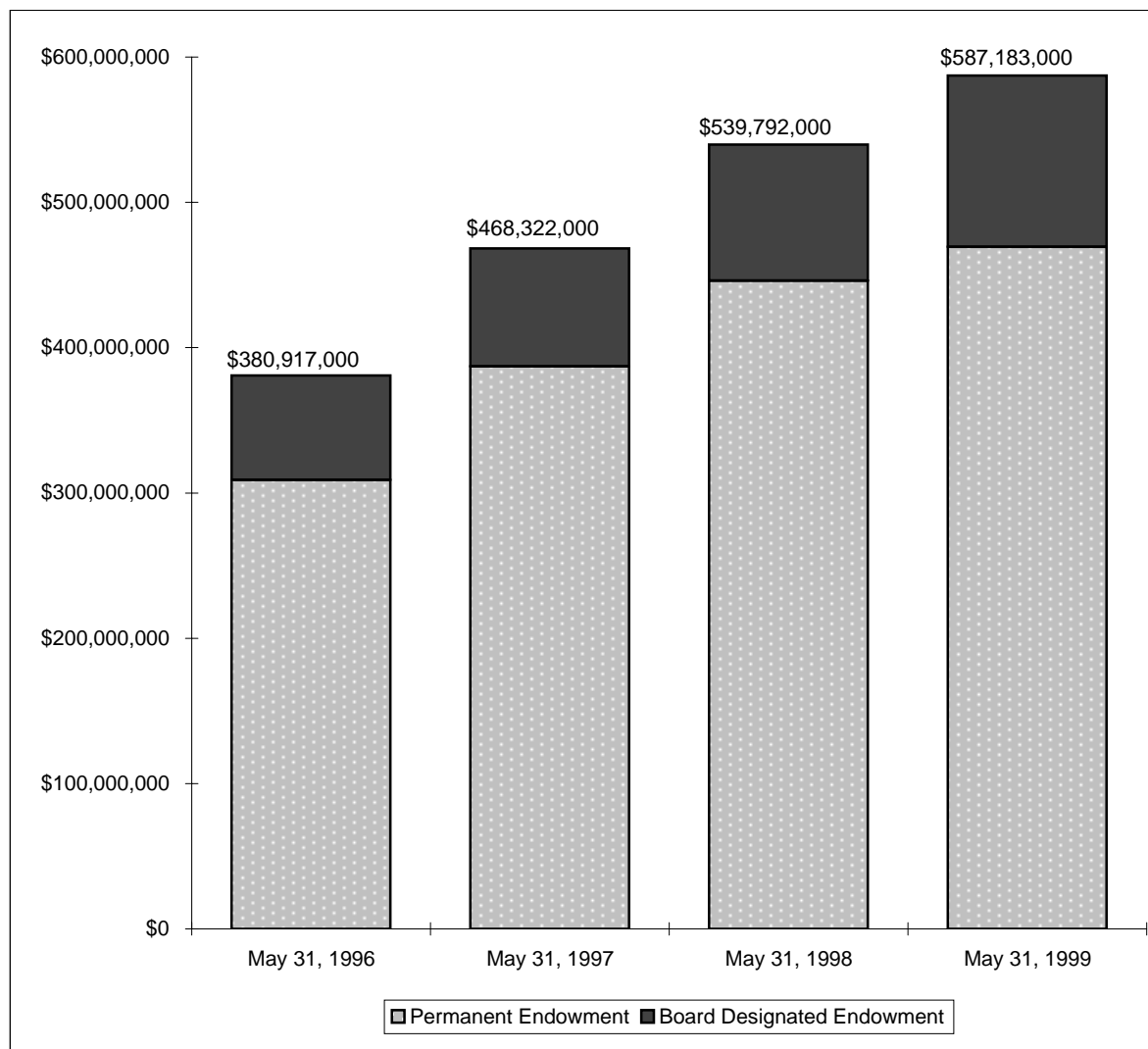
**Expenditures by Function as a
Percentage of Total Expenditures**

	1995-96	1996-97	1997-98	1998-99
Instruction	42.3%	40.0%	38.8%	36.1%
Acad Support, Resrch & Pub Service	8.3%	8.2%	7.8%	8.3%
Student Services	6.7%	6.5%	5.3%	4.5%
Plant Operations & Maintenance	6.5%	6.2%	5.8%	5.8%
Institutional Support	9.6%	11.1%	10.2%	11.7%
Scholarships & Fellowships	6.8%	7.2%	7.2%	7.7%
Auxiliary Enterprises	16.0%	16.6%	17.3%	17.4%
Discretionary Transfers	3.8%	4.3%	7.6%	8.5%
Total Expenditures	100.0%	100.0%	100.0%	100.0%

*Due to a change in reporting, only the years 1995-96 through 1998-99 are shown.

**Endowment Fund Balance - Market Value*
1995-96 through 1998-99**

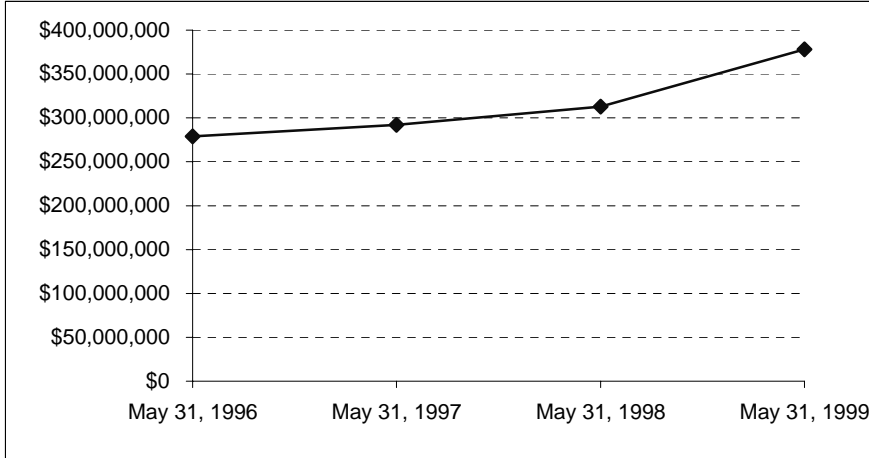
	May 31, 1996	May 31, 1997	May 31, 1998	May 31, 1999
Permanent Endowment	\$308,914,000	\$387,211,000	\$446,150,000	\$469,424,000
Board Designated Endowment	72,003,000	81,111,000	93,642,000	117,759,000
Total Endowment	\$380,917,000	\$468,322,000	\$539,792,000	\$587,183,000
Permanent Endowment	81.1%	82.7%	82.7%	79.9%
Board Designated Endowment	18.9%	17.3%	17.3%	20.1%
Total Endowment	100.0%	100.0%	100.0%	100.0%



*Due to a change in reporting, only the years 1995-96 through 1998-99 are shown.

**Property, Plant and Equipment*
1995-96 through 1998-99**

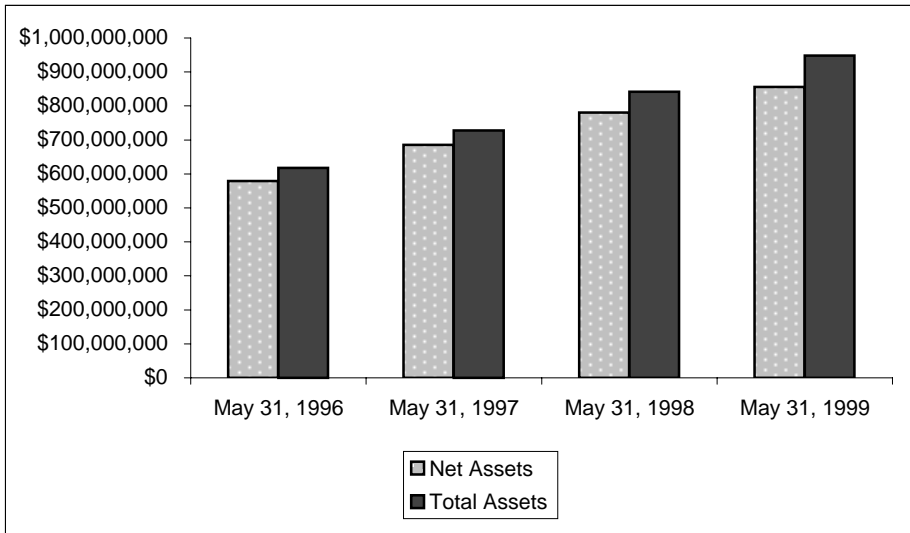
	May 31, 1996	May 31, 1997	May 31, 1998	May 31, 1999
Property, Plant & Equipment	\$278,960,000	\$292,070,000	\$312,970,000	\$378,060,000



*Does not reflect the impact of accumulated depreciation.

Assets
1995-96 through 1998-99**

	May 31, 1996	May 31, 1997	May 31, 1998	May 31, 1999
Net Assets	\$578,970,000	\$685,591,000	\$780,752,000	\$855,595,000
Total Assets	\$618,171,000	\$727,520,000	\$841,823,000	\$948,514,000



**Due to a change in accounting standards, only the years 1995-96 through 1998-99 are shown.