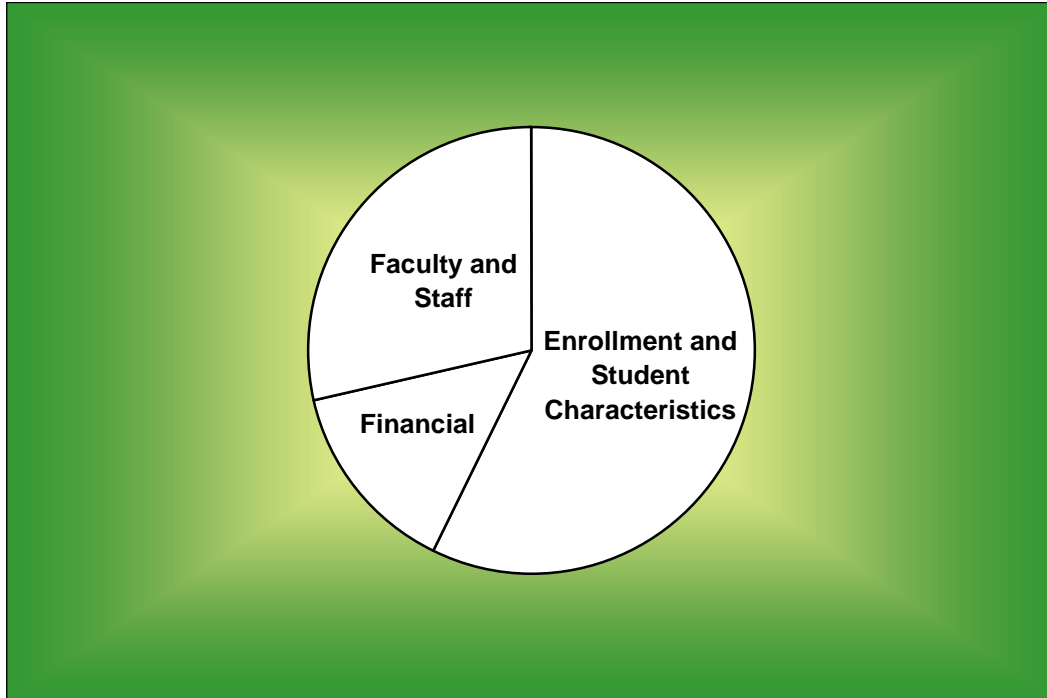


BAYLOR TRENDS



Fall 1994 - Fall 2000

Volume XII

Prepared by the Office of Institutional Research & Testing, May 2001

<http://www.baylor.edu/IMTS>

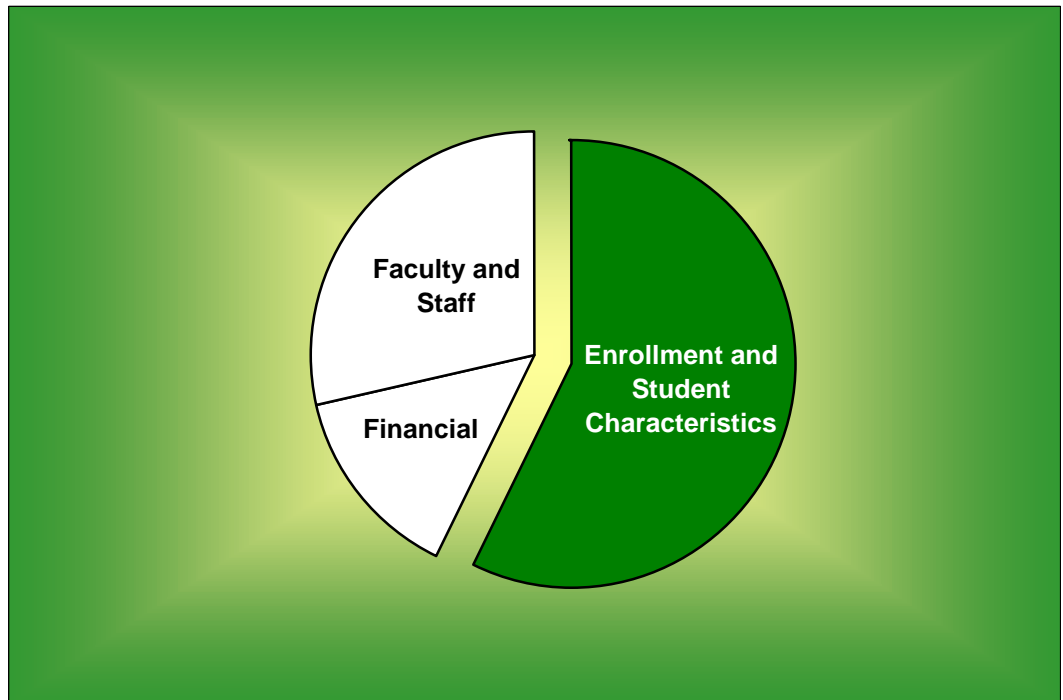
Table of Contents

	Page
ENROLLMENT AND STUDENT CHARACTERISTICS	
<i>New Freshman Applications and Enrollment</i>	1
<i>Transfer Applications and Enrollment</i>	1
<i>New Freshman Applications and Enrollment by Gender</i>	2
<i>New Freshman and Transfer Student Enrollment</i>	3
<i>Enrollment by Classification</i>	4
<i>Enrollment</i>	5
<i>Enrollment by Gender, Waco Campus</i>	6
<i>Enrollment by Religious Affiliation, Waco Campus</i>	7
<i>Baptist Percentage, Waco Campus</i>	7
<i>Enrollment by Racial/Ethnic Group</i>	8
<i>Racial/Ethnic Minority Percentage</i>	8
<i>Leading Texas Counties of Origin</i>	9
<i>Leading States of Origin</i>	9
<i>Percentage from Top Four Texas Counties</i>	10
<i>Percentage from Texas</i>	10
<i>Texas Enrollment by County</i>	11
<i>Enrollment by State</i>	12
<i>Countries Represented by Nonresident Aliens</i>	13
<i>Percentage of Nonresident Aliens</i>	13
<i>Enrollment by Unit</i>	14
<i>Enrollment Percentage by Unit</i>	15
<i>Student Credit Hours by Unit, Waco Campus</i>	16
<i>Retention of First-Time Freshman Classes</i>	17
<i>Distribution of Degrees</i>	18
<i>Summary of Degrees Awarded</i>	19
<i>Degree Programs</i>	20
FACULTY AND STAFF	
<i>Full-Time Faculty Positions</i>	22
<i>Highest Degree Earned by Full-Time Faculty</i>	22
<i>Percentage of Full-Time Faculty with Tenure</i>	23
<i>Average Salaries of Full-Time Instructional Faculty on Academic Year Contracts</i>	24
<i>Average Compensation of Full-Time Instructional Faculty on Academic Year Contracts</i>	25
<i>Institutional Staff</i>	26
<i>Percentage of Institutional Staff</i>	26
<i>Full-Time Faculty by Religious Affiliation</i>	27
<i>Full-Time Staff by Religious Affiliation</i>	27

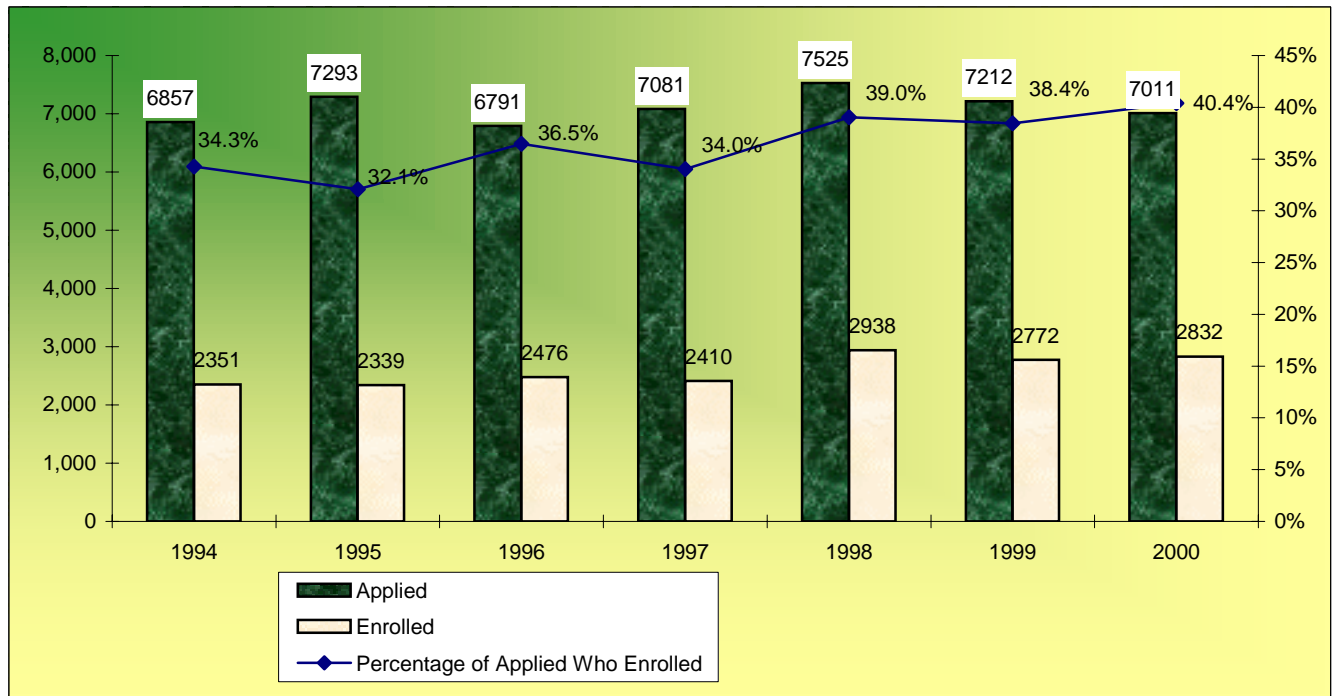
FINANCIAL

Tuition and Other Semester Charges28
Tuition, Room and Board Charges29
Annual Undergraduate Student Cost Profile30
Operating Funds:
 Sources of Revenues.....31
 Sources of Revenue as a Percentage of Total Revenues.....31
 Expenditures by Functions32
 Expenditures by Functions as a Percentage of Total Expenditures.....32
Endowment Fund Balance - Market Value33
Property, Plant and Equipment34
Assets.....34

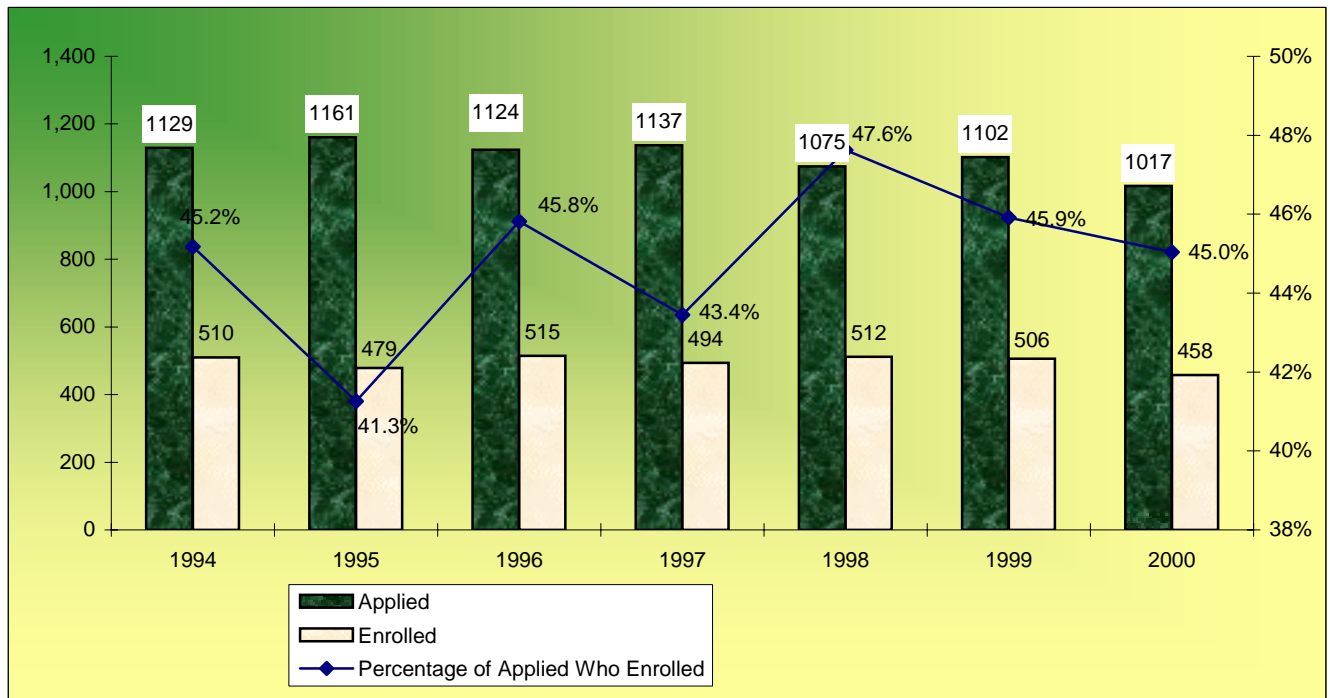
Enrollment and Student Characteristics



New Freshman Applications and Enrollment*
Fall 1994 - Fall 2000

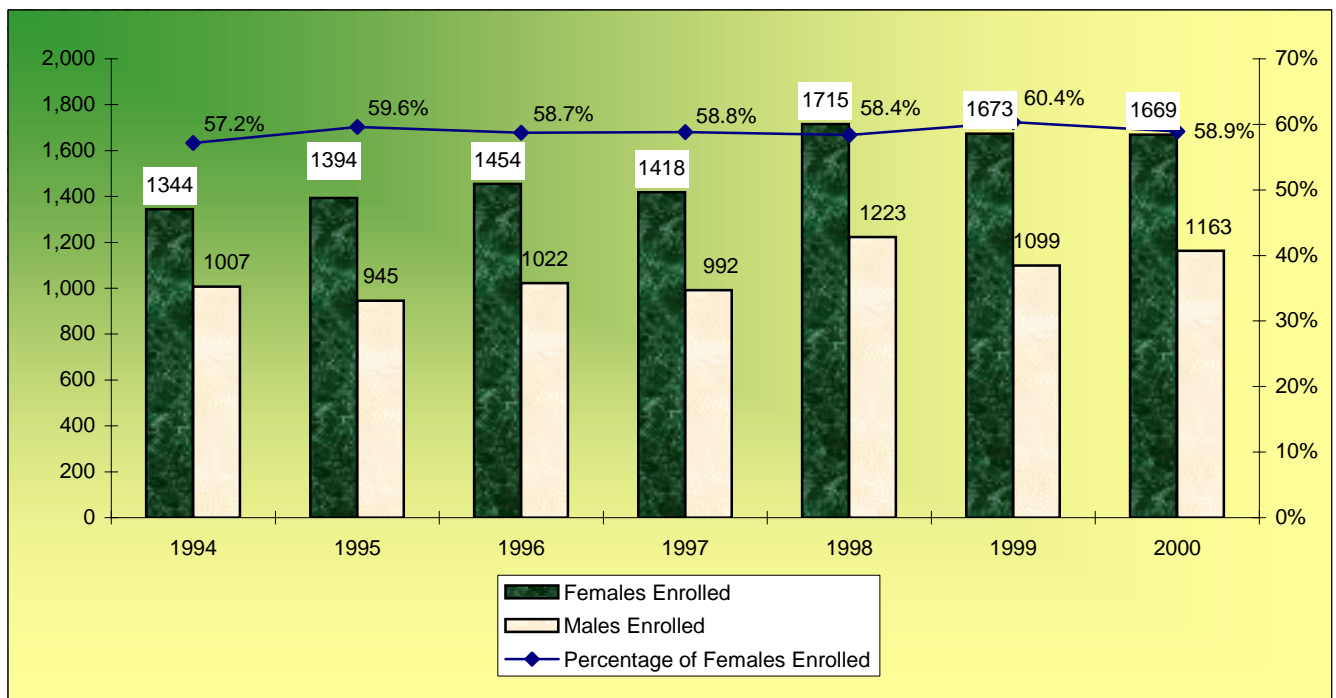
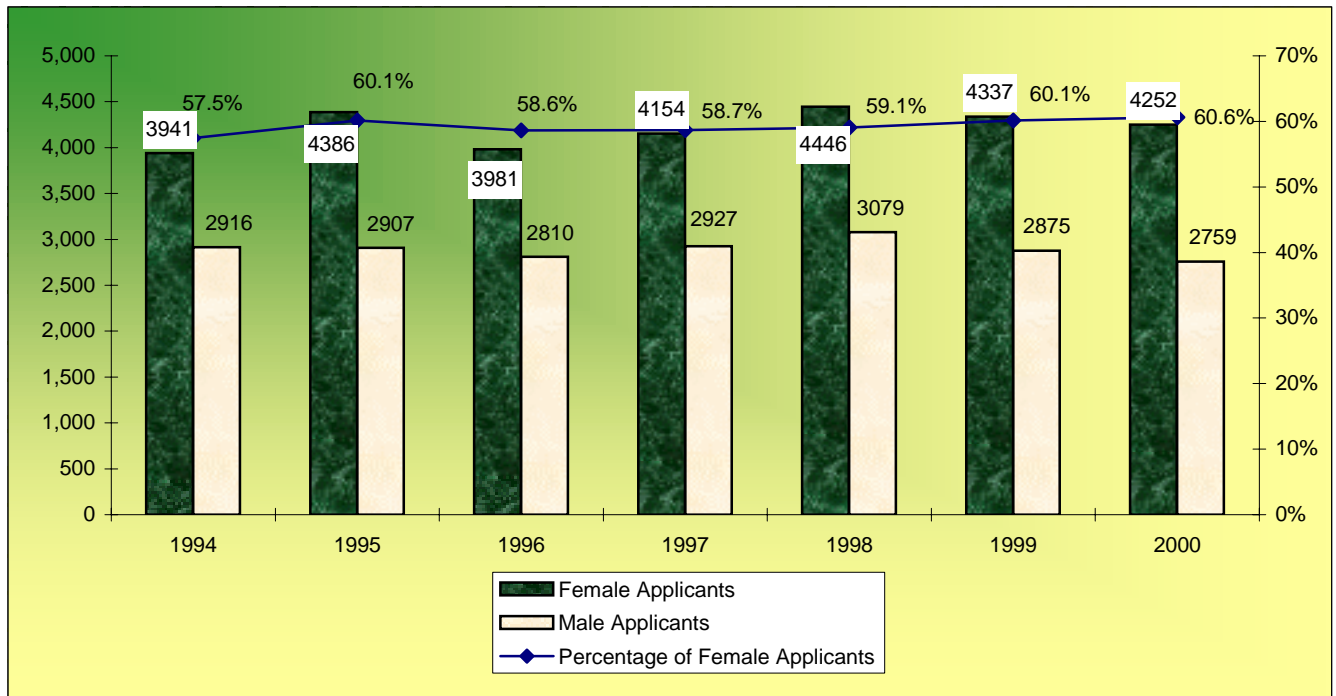


Transfer Applications and Enrollment*
Fall 1994 - Fall 2000



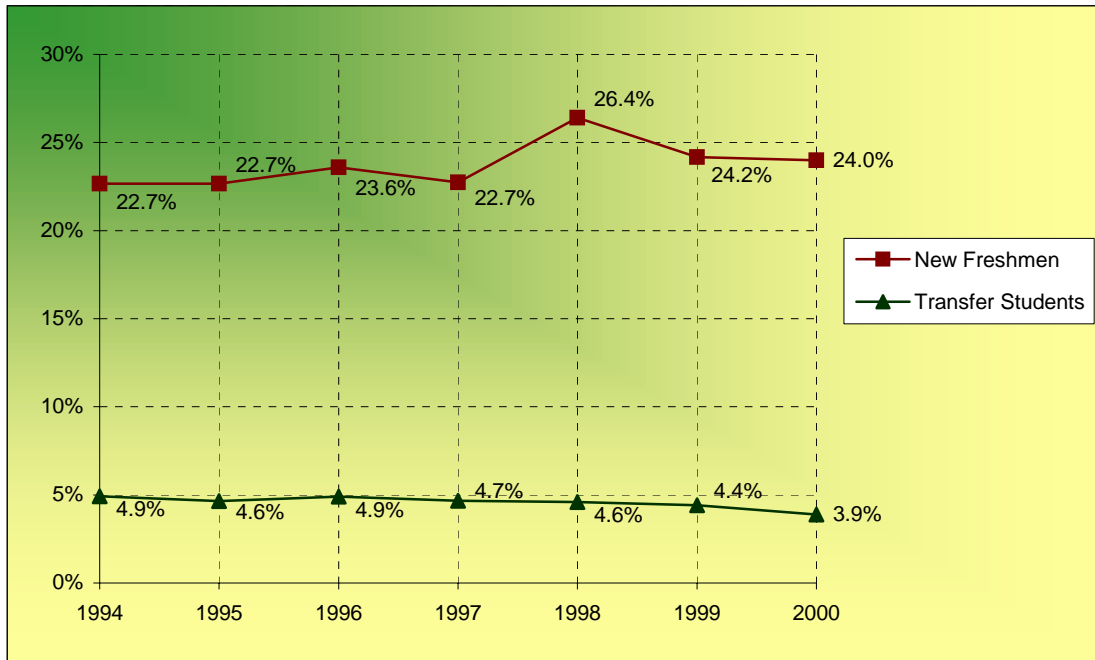
*Applications that were canceled and changed to future terms not included. Enrollment as of 12th class day.

**New Freshman Applications and Enrollment by Gender*
Fall 1994 - Fall 2000**



*Applications that were canceled and changed to future terms not included. Enrollment as of 12th class day.

**New Freshman and Transfer Student Enrollment
Fall 1994 - Fall 2000**



	Fall	1994	1995	1996	1997	1998	1999	2000
New Freshmen		2,351	2,339	2,476	2,410	2,938	2,772	2,832
New Transfer Students		510	479	515	494	512	506	458
Undergraduate Enrollment		10,373	10,323	10,500	10,597	11,124	11,472	11,806
% New Freshmen		22.7%	22.7%	23.6%	22.7%	26.4%	24.2%	24.0%
% New Transfer Students		4.9%	4.6%	4.9%	4.7%	4.6%	4.4%	3.9%

Notes:

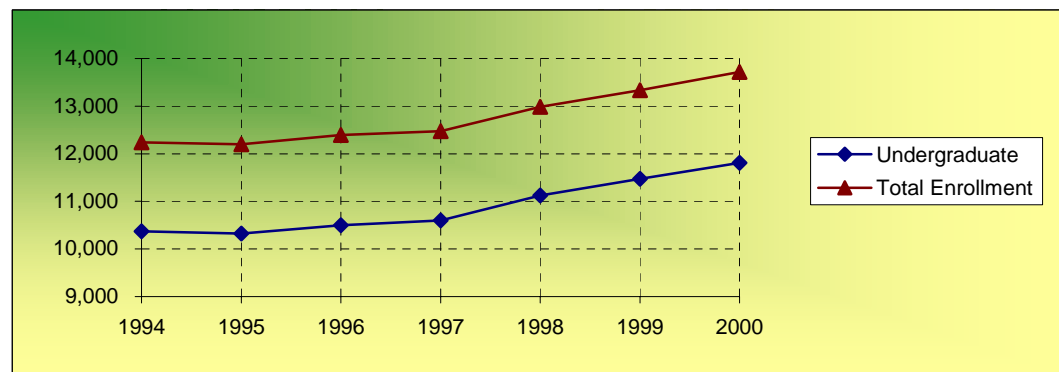
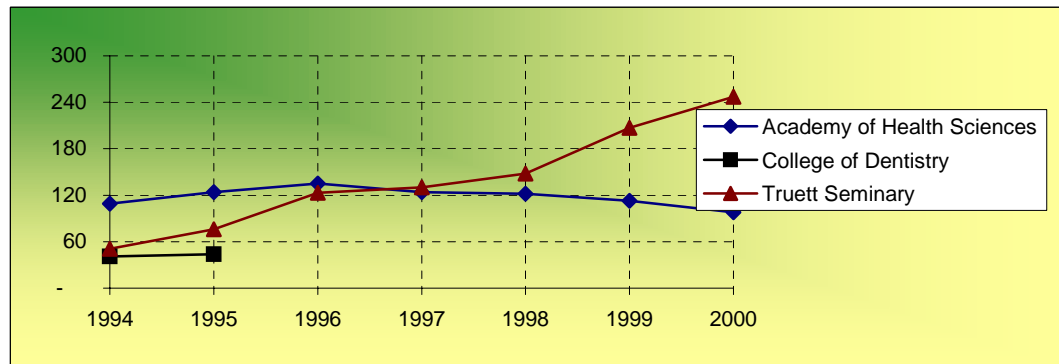
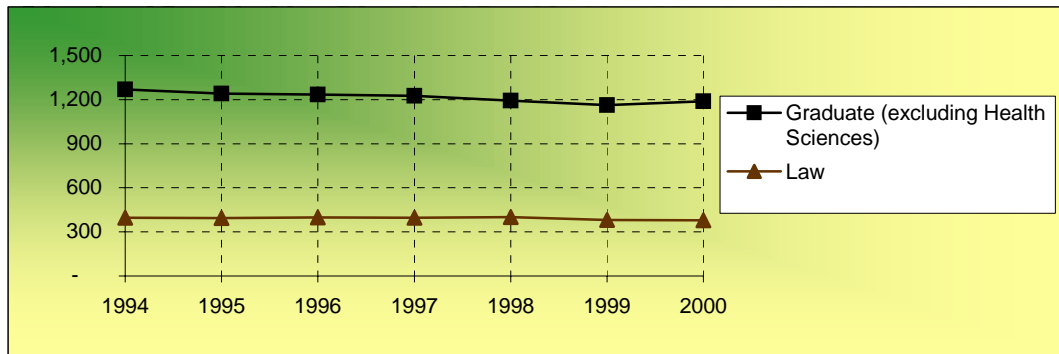
1. Freshmen who enter the University in the fall or preceding summer term are counted as "new freshmen." Similarly, transfer students entering in the fall or preceding summer term are counted as "transfer students" for the fall semester.

2. "Transfer students" refers to the entering summer/fall group of transfer students. For example, in Fall 1998, the 512 entering transfer students comprised 4.6% of the 11,124 undergraduates. However, for Fall 1998, the total number of enrolled undergraduates who had transferred into the University consisted of (a) transfers who entered in Fall 1998 and (b) students who transferred into the University in previous academic years. Generally, the total enrollment of students who had entered as transfer students is approximately 15% of the undergraduate student body.

Enrollment by Classification
Fall 1994 - Fall 2000

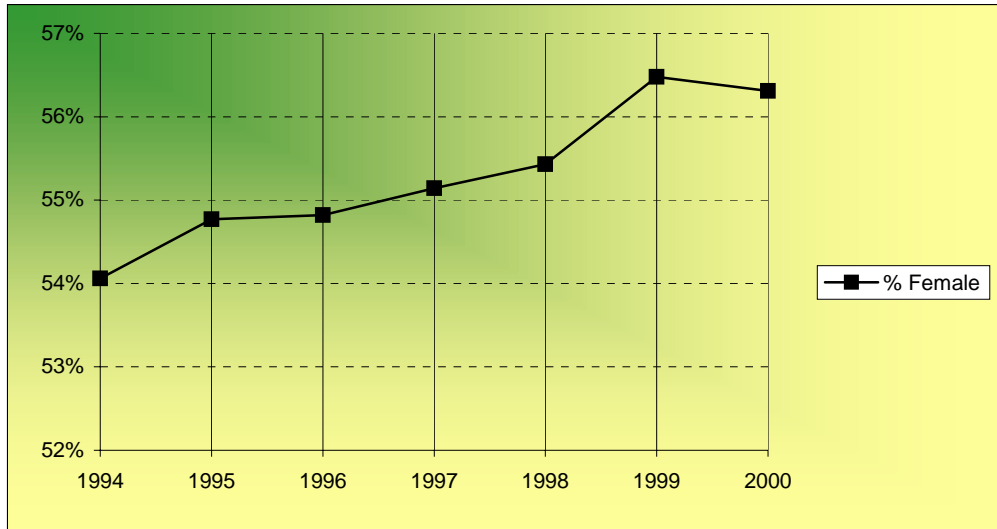
	Fall	1994	1995	1996	1997	1998	1999	2000
Freshman		3,205	3,043	3,151	3,070	3,566	3,534	3,678
Sophomore		2,183	2,230	2,210	2,458	2,333	2,619	2,565
Junior		2,041	2,182	2,166	2,139	2,314	2,244	2,516
Senior		2,686	2,646	2,819	2,774	2,779	2,956	2,916
Special		54	22	26	40	28	29	26
Special Postbaccalaureate								
Postbaccalaureate		204	200	128	116	104	90	105
TOTAL UNDERGRADUATE		10,373	10,323	10,500	10,597	11,124	11,472	11,806
Master's		897	854	854	821	807	760	788
Doctoral		316	347	349	356	360	373	379
Graduate Transient/Nondegree				23	28	10	6	6
Special Graduate		57	40	9	20	15	18	8
Graduate Professional							5	8
TOTAL "WACO" GRADUATE		1,270	1,241	1,235	1,225	1,192	1,162	1,189
School of Law		396	394	398	396	401	380	379
Truett Seminary		51	76	123	130	148	207	247
Academy of Health Sciences		109	124	135	124	122	113	98
College of Dentistry		41	44					
TOTAL ENROLLMENT		12,240	12,202	12,391	12,472	12,987	13,334	13,719

Enrollment
Fall 1994 - Fall 2000



Fall	1994	1995	1996	1997	1998	1999	2000
Undergraduate	10,373	10,323	10,500	10,597	11,124	11,472	11,806
Graduate (excluding Health Sciences)	1,270	1,241	1,235	1,225	1,192	1,162	1,189
Law	396	394	398	396	401	380	379
Truett Seminary	51	76	123	130	148	207	247
TOTAL (excluding Health Sciences)	12,090	12,034	12,256	12,348	12,865	13,221	13,621
College of Dentistry	41	44					
Academy of Health Sciences	109	124	135	124	122	113	98
TOTAL ENROLLMENT	12,240	12,202	12,391	12,472	12,987	13,334	13,719

**Enrollment by Gender
(Excluding Health Sciences)
Fall 1994 - Fall 2000**

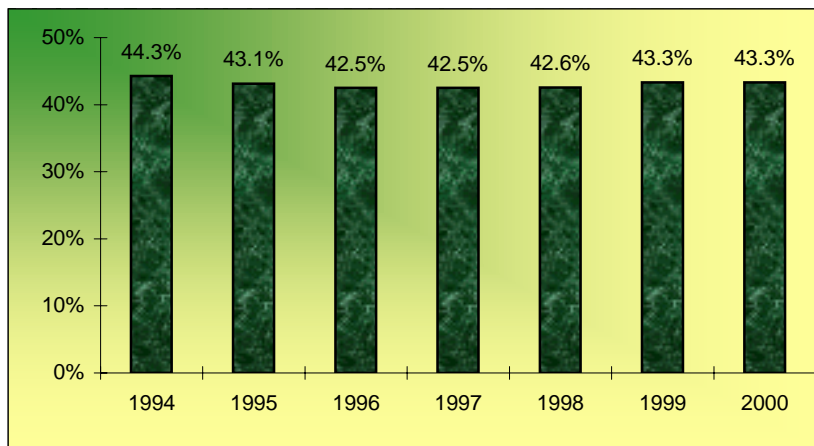


	Fall	1994	1995	1996	1997	1998	1999	2000
Female		6,536	6,591	6,719	6,809	7,131	7,467	7,670
Male		5,554	5,443	5,537	5,539	5,734	5,754	5,951
Total (excluding Health Sciences)		12,090	12,034	12,256	12,348	12,865	13,221	13,621
% Female		54.1%	54.8%	54.8%	55.1%	55.4%	56.5%	56.3%
% Male		45.9%	45.2%	45.2%	44.9%	44.6%	43.5%	43.7%

**Enrollment by Religious Affiliation
(Excluding Health Sciences)
Fall 1994 - Fall 2000**

Fall	1994	1995	1996	1997	1998	1999	2000
Assembly of God	162	149	157	148	149	153	135
Baptist	5,350	5,192	5,208	5,247	5,475	5,727	5,903
Buddhist	73	84	75	66	70	72	70
Catholic	1,500	1,511	1,528	1,544	1,590	1,619	1,674
Christian Scientist	9	8	8	6	8	5	2
Church of Christ	242	269	246	243	260	254	287
Church of God	19	23	32	18	25	19	19
Congregational	24	21	20	14	14	16	16
Disciples of Christ	92	89	85	83	81	89	88
Eastern Orthodox	45	44	44	45	44	27	29
Episcopalian	314	307	289	271	271	302	310
Four Square Gospel	8	9	13	11	9	7	10
Hindu	50	59	65	75	67	77	83
Interdenominational	332	370	389	403	425	429	466
Jehovah's Witness	9	7	9	9	9	14	12
Jewish	18	17	10	10	8	11	9
Latter Day Saints (Mormon)	21	22	19	19	22	19	21
Lutheran	356	363	383	346	383	398	396
Mennonite	5	4	4	3	5	7	7
Methodist	1,241	1,227	1,274	1,190	1,168	1,163	1,203
Moslem	42	48	55	56	58	77	86
Nazarene	29	23	27	30	29	34	27
Non-Denominational							102
Pentecostal	57	68	74	72	67	80	88
Presbyterian	608	554	542	528	532	518	552
Society of Friends	6	7	7	6	7	5	4
Unitarian	9	9	11	8	6	8	9
United Brethren	3	3	5	6	6	8	6
Other/Not Specified	1,466	1,547	1,677	1,891	2,077	2,083	2,007
TOTAL RELIGION	12,090	12,034	12,256	12,348	12,865	13,221	13,621

**Baptist Percentage
(Excluding Health Sciences)
Fall 1994 - Fall 2000**



**Enrollment by Racial / Ethnic Group*
Fall 1994 - Fall 2000**

A.

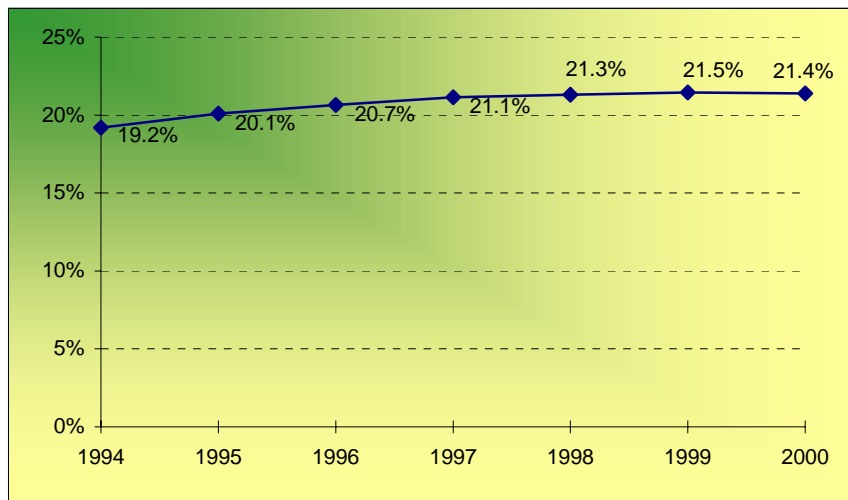
	Fall	1994	1995	1996	1997	1998	1999	2000
African American/Black		517	529	623	685	726	751	750
American Indian/Alaskan Native		46	60	60	64	74	65	64
Asian/Pacific Islander		770	777	796	793	809	847	876
Hispanic		902	956	931	917	941	959	967
White		9,824	9,662	9,739	9,717	9,995	10,278	10,671
Other		115	129	149	178	216	239	276
Not Specified		66	89	93	118	226	195	115
Total		12,240	12,202	12,391	12,472	12,987	13,334	13,719

B.

	Fall	1994	1995	1996	1997	1998	1999	2000
African American/Black		502	517	609	675	713	731	733
American Indian/Alaskan Native		46	60	60	63	73	64	64
Asian/Pacific Islander		615	633	646	635	636	648	664
Hispanic		856	912	893	880	918	936	939
White		9,750	9,598	9,681	9,656	9,934	10,225	10,612
Other		88	97	120	149	189	209	237
Not Specified		61	77	81	112	212	181	108
NONRESIDENT ALIEN		322	308	301	302	312	340	362
Total		12,240	12,202	12,391	12,472	12,987	13,334	13,719

*In Table B, nonresident aliens are partitioned as a group.

**Racial / Ethnic Minority Percentage
Fall 1994 - Fall 2000
(From Table A)**



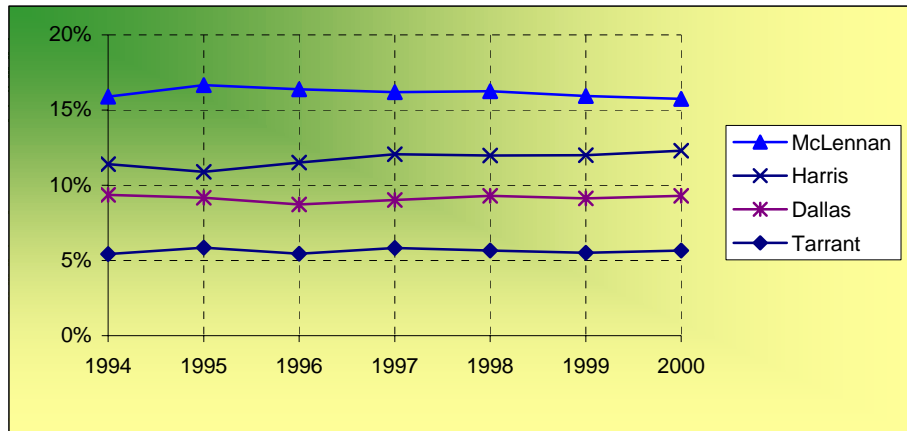
**Leading Texas Counties of Origin
Fall 1994 - Fall 2000**

Fall	1994	1995	1996	1997	1998	1999	2000
McLennan	1,946	2,033	2,030	2,020	2,112	2,124	2,161
Harris	1,395	1,328	1,425	1,505	1,556	1,601	1,687
Dallas	1,146	1,120	1,080	1,125	1,208	1,217	1,276
Tarrant	663	714	675	726	734	735	777
Bexar	478	460	489	508	570	528	532
Collin	278	277	302	304	363	431	489
Travis	255	248	242	238	267	283	304
Fort Bend	143	165	172	194	218	237	299
Montgomery	122	136	151	184	204	224	253
Bell	204	200	220	220	234	203	206
Gregg	125	122	126	125	118	134	141
Denton	88	103	124	139	145	131	131
Williamson	97	96	110	110	115	133	125
Smith	93	85	90	97	117	128	123
Galveston	113	102	104	106	98	105	119
El Paso	93	94	90	78	90	93	105
Taylor	35	41	49	48	71	89	94
Brazoria	66	64	63	61	64	79	90
Nueces	98	92	89	93	95	91	89
Jefferson	79	77	77	78	87	91	88
Hidalgo	113	115	105	87	107	94	81

**Leading States of Origin
Fall 1994 - Fall 2000**

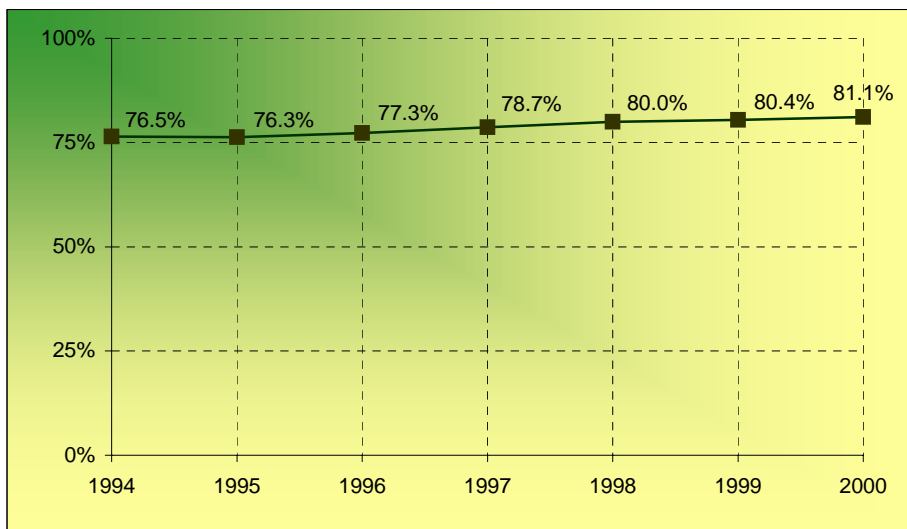
Fall	1994	1995	1996	1997	1998	1999	2000
Texas	9,360	9,311	9,579	9,811	10,386	10,726	11,128
California	247	259	286	278	273	268	250
Oklahoma	238	245	254	247	237	229	218
Louisiana	181	180	163	157	147	146	144
Colorado	142	148	145	149	135	134	134
Arkansas	155	154	157	140	122	113	118
Missouri	177	150	148	122	111	116	114
Kansas	121	108	111	105	110	109	111
Tennessee	132	118	99	103	88	82	84
Illinois	80	89	82	79	78	73	80

**Percentage From Top Four Texas Counties
Fall 1994 - Fall 2000**



Fall	1994	1995	1996	1997	1998	1999	2000
McLennan	15.9%	16.7%	16.4%	16.2%	16.3%	15.9%	15.8%
Harris	11.4%	10.9%	11.5%	12.1%	12.0%	12.0%	12.3%
Dallas	9.4%	9.2%	8.7%	9.0%	9.3%	9.1%	9.3%
Tarrant	5.4%	5.9%	5.4%	5.8%	5.7%	5.5%	5.7%

**Percentage From Texas
Fall 1994 - Fall 2000**

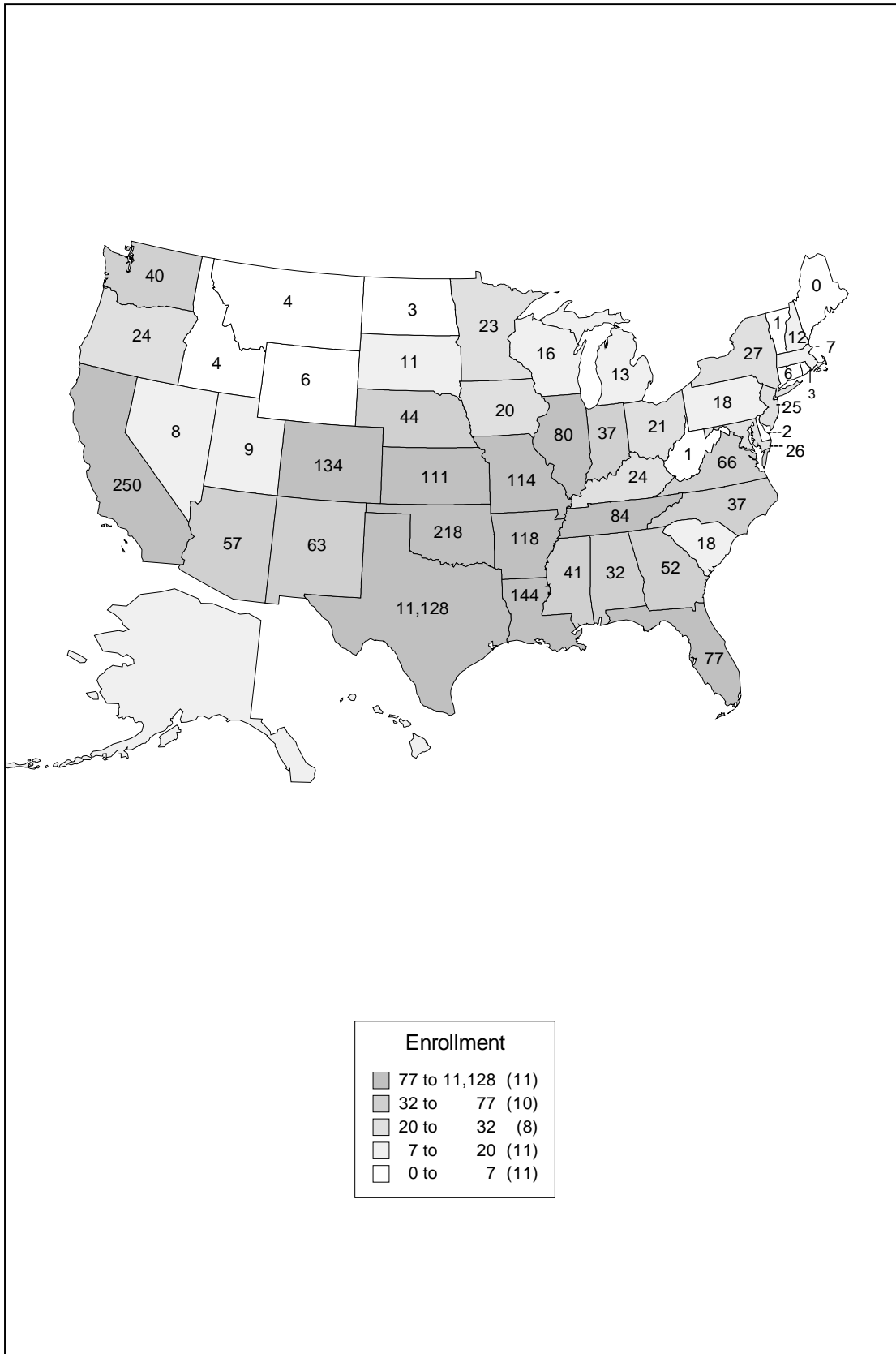


**Texas Enrollment by County
Fall 2000**

	n		n		n		n		n
Anderson	27	Crane	0	Hartley	1	Madison	0	San Patricio	12
Andrews	3	Crockett	0	Haskell	1	Marion	3	San Saba	2
Angelina	25	Crosby	1	Hays	17	Martin	0	Schleicher	1
Aransas	1	Culberson	1	Hemphill	0	Mason	2	Scurry	8
Archer	1	Dallam	2	Henderson	24	Matagorda	12	Shackelford	2
Armstrong	0	Dallas	1,276	Hidalgo	81	Maverick	15	Shelby	9
Atascosa	7	Dawson	1	Hill	40	McCulloch	1	Sherman	0
Austin	12	De Witt	7	Hockley	4	McLennan	2,161	Smith	123
Bailey	3	Deaf Smith	2	Hood	15	McMullen	1	Somervell	2
Bandera	1	Delta	0	Hopkins	13	Medina	1	Starr	3
Bastrop	10	Denton	131	Houston	10	Menard	3	Stephens	1
Baylor	0	Dickens	1	Howard	3	Midland	58	Sterling	0
Bee	3	Dimmit	3	Husdpeth	0	Milam	11	Stonewall	0
Bell	206	Donley	1	Hunt	25	Mills	0	Sutton	4
Bexar	532	Duval	1	Hutchinson	9	Mitchell	1	Swisher	0
Blanco	2	Eastland	9	Irion	2	Montague	3	Tarrant	777
Borden	0	Ector	31	Jack	5	Montgomery	253	Taylor	94
Bosque	31	Edwards	1	Jackson	7	Moore	7	Terrell	0
Bowie	25	El Paso	105	Jasper	14	Morris	4	Terry	0
Brazoria	90	Ellis	60	Jeff Davis	0	Motley	0	Throckmorton	0
Brazos	33	Erath	5	Jefferson	88	Nacagdoches	24	Titus	17
Brewster	1	Falls	14	Jim Hogg	0	Navarro	26	Tom Green	14
Briscoe	0	Fannin	7	Jim Wells	4	Newton	1	Travis	304
Brooks	2	Fayette	6	Johnson	76	Nolan	7	Trinity	2
Brown	13	Fisher	1	Jones	7	Nueces	89	Tyler	3
Burleson	3	Floyd	1	Karnes	4	Ochiltree	1	Upshur	20
Burnett	11	Foard	0	Kaufman	33	Oldham	1	Upton	0
Caldwell	5	Fort Bend	299	Kendall	22	Orange	18	Uvalde	4
Calhoun	8	Franklin	7	Kenedy	0	Palo Pinto	1	Val Verde	3
Callahan	2	Freestone	9	Kent	0	Panola	11	Van Zandt	7
Cameron	57	Frio	1	Kerr	25	Parker	49	Victoria	33
Camp	2	Gaines	2	Kimble	0	Parmer	0	Walker	8
Carson	1	Galveston	119	King	0	Pecos	1	Waller	3
Cass	14	Garza	1	Kinney	0	Polk	9	Ward	3
Castro	0	Gillespie	9	Kleberg	5	Potter	75	Washington	16
Chambers	3	Glasscock	0	Knox	0	Presidio	0	Webb	30
Cherokee	22	Goliad	1	La Salle	2	Rains	1	Wharton	12
Childress	1	Gonzales	3	Lamar	9	Randall	9	Wheeler	0
Clay	1	Gray	5	Lamb	1	Reagan	3	Wichita	23
Cochran	0	Grayson	23	Lampasas	9	Real	1	Wilbarger	6
Coke	0	Gregg	141	Lavaca	12	Red River	1	Willacy	6
Coleman	5	Grimes	1	Lee	9	Reeves	1	Williamson	125
Collin	489	Guadalupe	35	Leon	4	Refugio	1	Wilson	11
Collingworth	0	Hale	11	Liberty	22	Roberts	0	Winkler	4
Colorado	4	Hall	0	Limestone	21	Robertson	4	Wise	7
Comal	24	Hamilton	4	Lipscomb	0	Rockwall	60	Wood	10
Comanche	3	Hansford	2	Live Oak	3	Runnels	2	Yoakum	0
Concho	1	Hardeman	1	Llano	6	Rusk	12	Young	4
Cooke	7	Hardin	8	Loving	0	Sabine	3	Zapata	0
Coryell	38	Harris	1,687	Lubbock	40	San Augustine	1	Zavala	1
Cottle	0	Harrison	26	Lynn	1	San Jacinto	1	Total	11,128

Source: ICUT.

**Enrollment by State
Fall 2000**

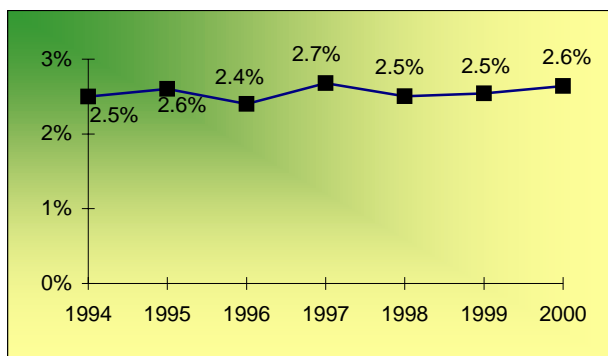


**Countries Represented by Nonresident Aliens
Fall 1994 - Fall 2000**

	Fall	1994	1995	1996	1997	1998	1999	2000		Fall	1994	1995	1996	1997	1998	1999	2000
Albania	-	-	1	-	-	-	-	-	Malaysia	3	2	-	1	4	2	2	
Argentina	2	1	1	-	-	-	1	2	Mali	-	-	-	-	-	-	2	2
Australia	2	3	7	5	5	3	5	5	Mauritius	-	-	-	1	1	1	1	
Austria	-	-	-	-	1	1	1	1	Mexico	19	15	18	15	9	6	9	
Bahamas	-	-	-	-	1	2	2	2	Moldova	-	1	-	-	-	-	-	
Bangladesh	-	-	2	3	4	3	2	2	Morocco	1	-	-	-	-	-	-	
Belgium	-	-	-	2	2	2	1	1	Nepal	-	-	-	-	1	1	1	
Belize	-	1	1	3	1	1	1	1	Netherlands	3	2	3	1	1	1	1	
Bolivia	-	-	-	1	-	-	-	-	New Zealand	-	-	1	1	1	1	2	
Brazil	5	1	1	2	1	4	2	2	Nicaragua	-	-	-	-	1	-	1	
British Virgin Islands	-	-	1	1	1	1	1	1	Nigeria	5	3	3	4	8	8	7	
Bulgaria	6	4	5	7	8	6	6	6	North Mariana Isle	-	-	-	-	2	1	1	
Byelarus	1	1	-	-	-	-	-	-	Norway	8	8	5	5	3	-	1	
Canada	8	13	11	12	16	15	17	17	Pakistan	1	2	5	1	1	9	8	
Cayman Islands	1	-	1	2	-	-	-	-	Panama	7	4	5	5	1	1	-	
Chile	5	3	2	2	2	2	1	1	Paraguay	1	-	-	-	-	-	-	
China	43	41	49	56	56	62	64	64	Philippines	1	-	-	-	1	-	-	
Columbia	5	9	6	7	7	3	2	2	Poland	2	4	4	4	2	2	2	
Coral Sea Isle Terr.	-	-	-	-	1	1	1	1	Romania	-	2	2	5	4	5	3	
Costa Rica	4	2	2	3	3	4	4	4	Russia	4	2	6	3	1	3	4	
Croatia	-	-	-	-	1	1	-	-	Rwanda	1	1	1	-	-	1	1	
Cyprus	1	-	-	-	-	-	-	1	Saudi Arabia	-	1	-	-	-	1	2	
Czech Republic	1	2	3	3	3	-	-	-	Senegal	-	-	-	-	1	1	1	
Ecuador	-	-	-	-	1	-	-	-	Singapore	5	3	1	2	2	2	3	
El Salvador	2	-	1	1	-	-	-	-	Slovakia	1	1	1	1	1	-	-	
Eritrea	-	-	1	1	-	-	-	-	Slovenia	-	-	-	-	1	2	2	
Estonia	1	1	-	1	-	-	-	-	Somalia	-	-	-	-	-	1	1	
Ethiopia	3	-	1	-	-	1	1	1	South Africa	3	1	2	3	3	2	1	
Finland	-	1	1	2	1	1	-	-	Soviet Union	-	-	-	-	1	2	2	
France	12	6	6	4	4	3	6	6	Spain	4	5	4	3	2	2	1	
Germany	4	4	-	4	3	3	6	6	Sri Lanka	4	2	2	5	4	5	5	
Ghana	-	2	1	1	-	-	2	2	Sudan	1	1	1	-	-	-	-	
Greece	2	2	-	-	-	-	-	-	Sweden	1	4	4	3	5	7	5	
Guatemala	1	2	1	-	-	-	1	1	Switzerland	-	-	1	4	4	3	2	
Honduras	4	4	6	7	4	2	2	2	Taiwan	19	16	18	31	29	39	42	
Hong Kong*	14	14	11	-	-	-	-	-	Tanzania	1	-	-	-	-	-	-	
Hungary	-	-	-	2	3	3	6	6	Thailand	6	6	7	8	5	8	5	
Iceland	-	-	-	-	2	-	-	-	Togo	-	-	1	1	1	1	-	
India	23	15	20	17	21	24	29	29	Trinidad/Tobago	2	2	1	1	-	-	1	
Indonesia	4	4	10	9	11	11	9	9	Turkey	1	1	-	-	-	2	-	
Ireland	-	-	1	-	-	1	-	-	Uganda	1	1	1	-	-	-	-	
Italy	1	2	1	1	-	1	1	1	Ukraine	1	2	2	1	-	1	2	
Jamaica	1	1	-	1	2	3	3	3	United Arab Emirates	1	2	1	-	1	1	2	
Japan	14	16	14	11	12	17	17	17	United Kingdom	5	8	11	7	9	6	5	
Jordan	-	2	-	-	1	-	-	-	Uzbekistan	2	3	2	-	-	-	-	
Kazakhstan	-	-	2	2	-	-	-	-	Venezuela	5	5	3	4	1	4	7	
Kenya	3	4	4	3	2	3	4	4	Yugoslavia	-	-	1	1	-	-	-	
Korea	13	14	18	33	21	20	23	23	Zambia	-	1	1	1	-	-	-	
Lebanon	1	1	1	-	-	-	1	1	Zimbabwe	-	2	1	1	-	-	1	
Macao	-	1	1	-	-	-	-	-									
									Total	306	290	313	332	312	339	362	

*Beginning Fall 1997, Hong Kong counted in China.

Percentage of Nonresident Aliens, Fall 1994 - Fall 2000



Source: International Programs Report, "Annual Census of Foreign Students in the United States"

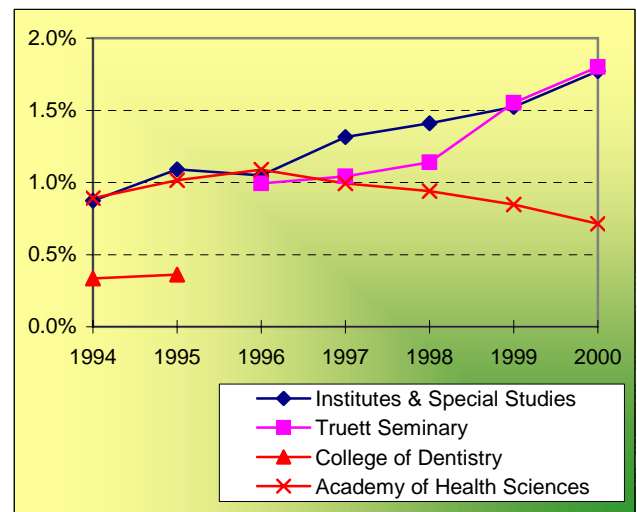
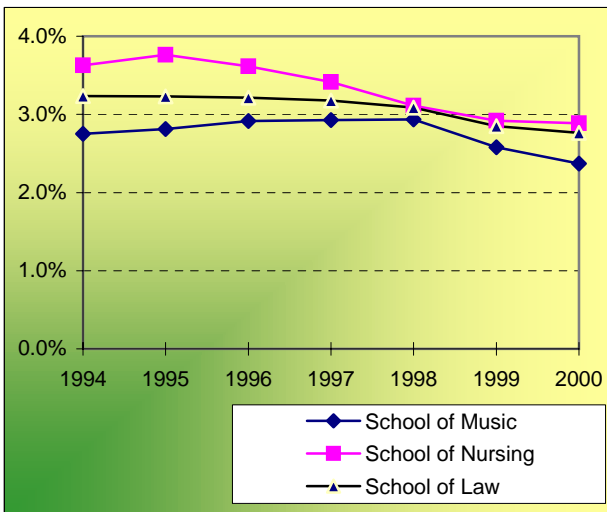
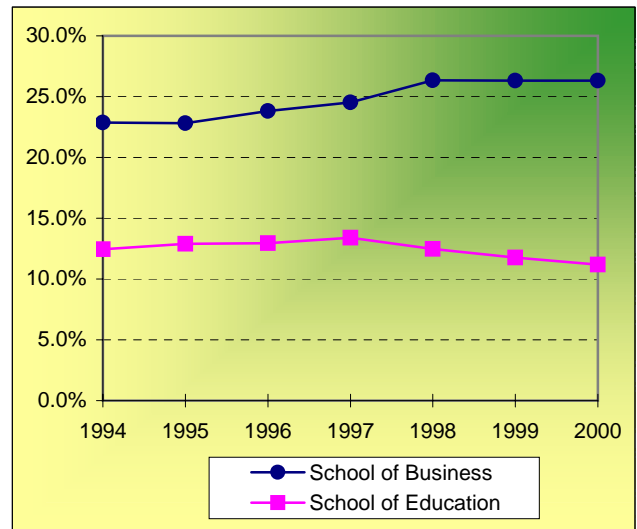
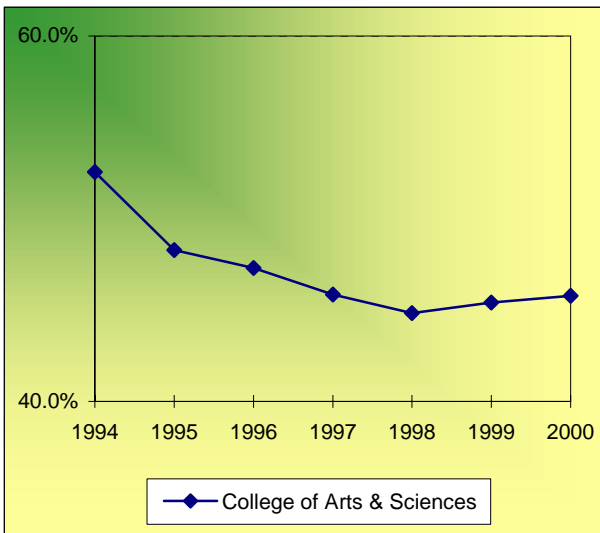
**Enrollment by Unit
Fall 1994 - Fall 2000**

	Fall	1994	1995	1996	1997	1998	1999	2000
College of Arts & Sciences		6,433	5,891	5,862	5,718	5,823	6,056	6,281
School of Business		2,798	2,785	2,950	3,059	3,421	3,508	3,609
School of Education		1,524	1,574	1,604	1,672	1,619	1,568	1,534
School of Engineering & Computer Sci.		-	315	348	370	460	542	593
School of Music		337	343	361	365	381	344	325
School of Nursing		444	459	448	426	404	389	396
Institutes & Special Studies		107	133	130	164	183	203	243
Graduate School		-	64	32	48	25	24	14
School of Law		396	394	398	396	401	380	379
Truett Seminary		51	76	123	130	148	207	247
College of Dentistry		41	44	-	-	-	-	-
Academy of Health Sciences		109	124	135	124	122	113	98
TOTAL		12,240	12,202	12,391	12,472	12,987	13,334	13,719

Notes:

1. The School of Engineering & Computer Science was formed in 1995.
2. Beginning in 1995, the enrollment for the Graduate School reflects students classified as "No Major."
3. Programs housed in the College of Dentistry were transferred to Texas A&M University in Fall 1996.

**Enrollment Percentage by Unit
Fall 1994 - Fall 2000**



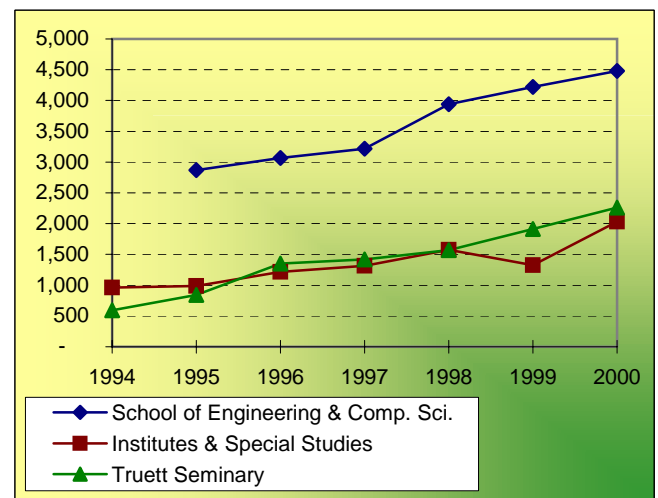
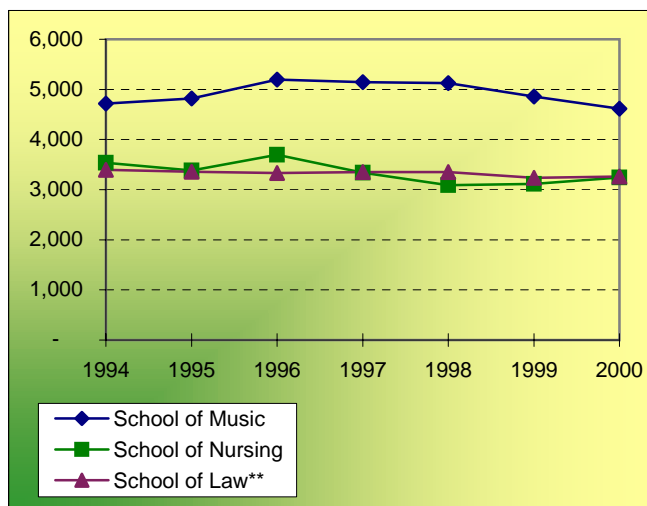
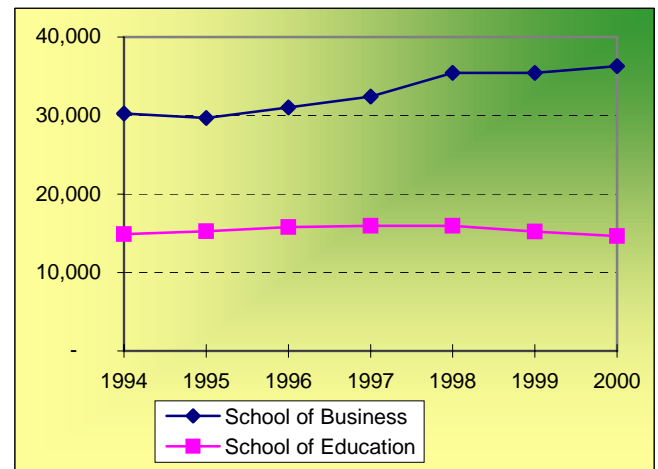
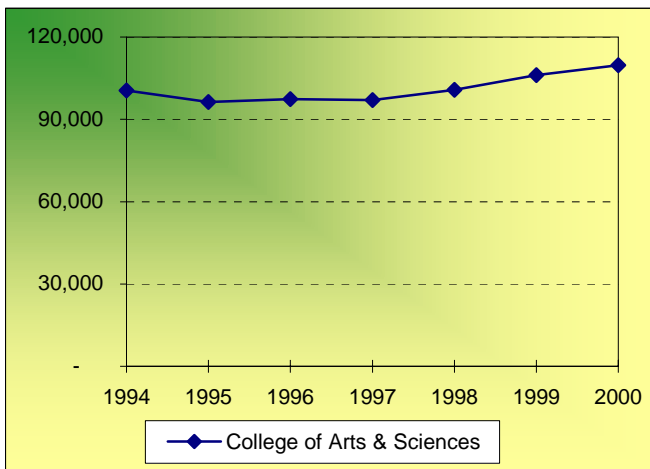
	Fall	1994	1995	1996	1997	1998	1999	2000
College of Arts & Sciences		52.6%	48.3%	47.3%	45.8%	44.8%	45.4%	45.8%
School of Business		22.9%	22.8%	23.8%	24.5%	26.3%	26.3%	26.3%
School of Education		12.5%	12.9%	12.9%	13.4%	12.5%	11.8%	11.2%
School of Engineering & Computer Sci.					3.0%	3.5%	4.1%	4.3%
School of Music		2.8%	2.8%	2.9%	2.9%	2.9%	2.6%	2.4%
School of Nursing		3.6%	3.8%	3.6%	3.4%	3.1%	2.9%	2.9%
Institutes & Special Studies		0.9%	1.1%	1.0%	1.3%	1.4%	1.5%	1.8%
Graduate School					0.4%	0.2%	0.2%	0.1%
School of Law		3.2%	3.2%	3.2%	3.2%	3.1%	2.8%	2.8%
Truett Seminary				1.0%	1.0%	1.1%	1.6%	1.8%
College of Dentistry		0.3%	0.4%					
Academy of Health Sciences		0.9%	1.0%	1.1%	1.0%	0.9%	0.8%	0.7%

See Notes, page 14.

Source: IRT.

**Student Credit Hours by Unit*
(Excluding Health Sciences)
Fall 1994 - Fall 2000**

	Fall	1994	1995	1996	1997	1998	1999	2000
College of Arts & Sciences		100,562	96,348	97,393	97,007	100,794	106,150	109,742
School of Business		30,244	29,697	31,037	32,418	35,429	35,429	36,307
School of Education		14,897	15,243	15,793	15,934	15,930	15,225	14,640
School of Engineering & Comp. Sci.			2,870	3,067	3,218	3,938	4,219	4,480
School of Music		4,714	4,818	5,197	5,147	5,123	4,856	4,617
School of Nursing		3,539	3,381	3,693	3,337	3,089	3,114	3,245
Institutes & Special Studies		961	989	1,217	1,316	1,576	1,324	2,033
School of Law**		3,397	3,356	3,330	3,353	3,353	3,238	3,260
Truett Seminary		593	841	1,351	1,420	1,568	1,912	2,260
TOTAL		158,907	157,543	162,078	163,150	170,800	175,467	180,583



*BIC courses have been credited to the department of the instructor. See additional notes on page 14.

**Quarter hours converted to semester hours.

Retention of First-Time Freshman Classes Entering Fall 1987 - Fall 1999

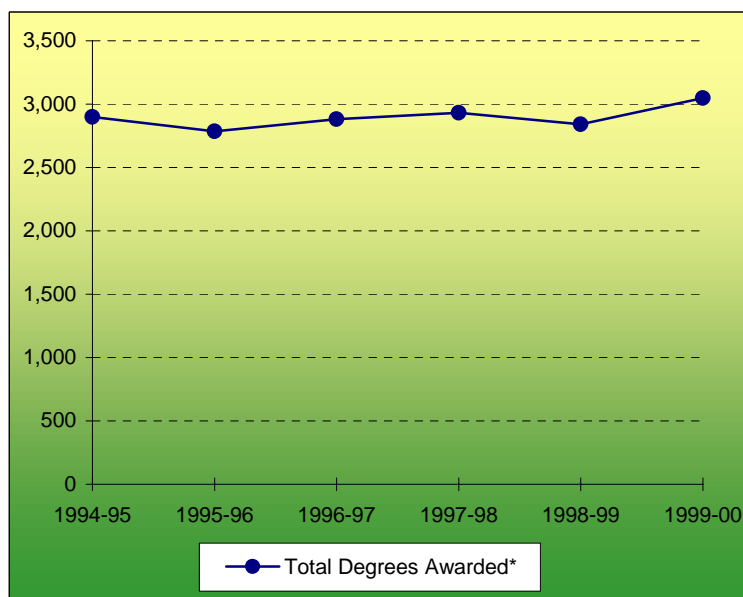
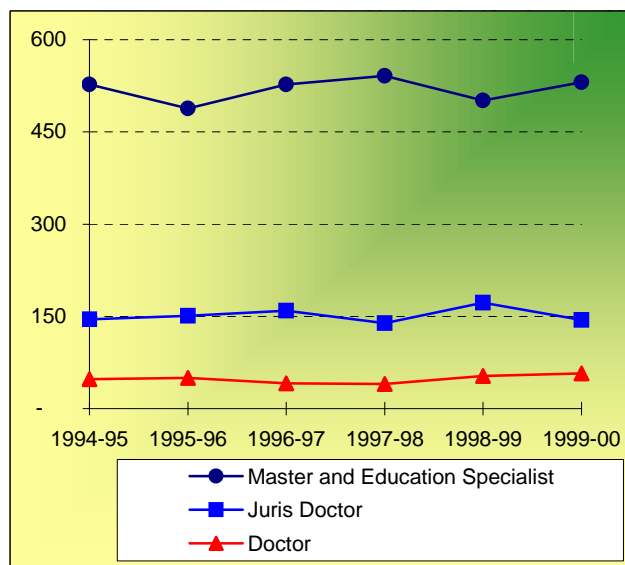
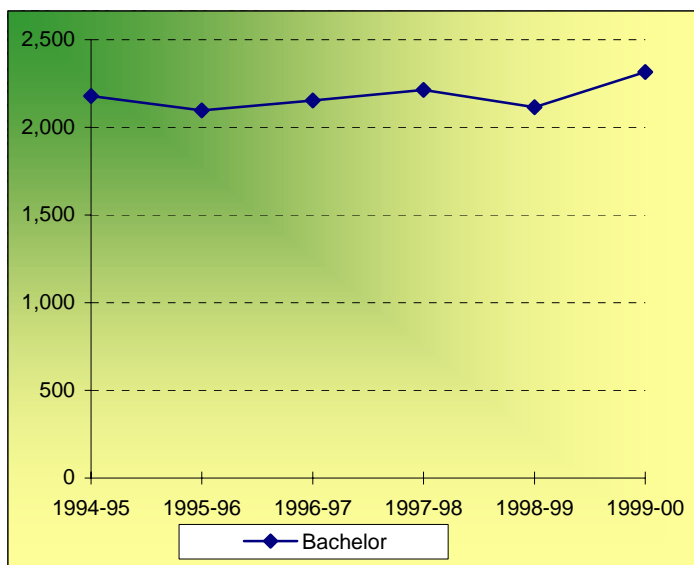
First-Time Freshman Class of:	After 1 year		After 2 years		After 3 years			After 4 years			After 5 years			After 6 years		
	Cont.	Drop.	Cont.	Drop.	Cont.	Drop.	Grad.	Cont.	Drop.	Grad.	Cont.	Drop.	Grad.	Cont.	Drop.	Grad.
1987	85.0%	15.0%	75.6%	24.4%	71.7%	27.1%	1.2%	24.2%	28.2%	47.6%	3.4%	28.3%	68.3%	1.1%	28.2%	70.7%
1988	84.0%	16.0%	75.5%	24.5%	72.5%	26.5%	1.0%	29.8%	28.3%	41.9%	3.3%	28.5%	68.2%	0.8%	27.9%	71.3%
1989	85.7%	14.3%	74.8%	25.2%	71.2%	27.7%	1.1%	28.3%	28.9%	42.8%	3.9%	28.9%	67.2%	1.2%	28.8%	70.0%
1990	84.1%	15.9%	73.0%	27.0%	69.8%	29.0%	1.2%	28.1%	29.6%	42.3%	4.2%	31.2%	64.6%	1.6%	29.4%	69.0%
1991	84.0%	16.0%	74.5%	25.5%	70.7%	28.2%	1.1%	26.5%	29.6%	43.9%	3.8%	29.5%	66.7%	1.3%	29.0%	69.7%
1992	81.9%	18.1%	71.5%	28.5%	67.2%	31.5%	1.4%	28.4%	32.3%	39.3%	4.8%	32.0%	63.2%	0.9%	32.2%	66.9%
1993	81.6%	18.4%	72.0%	28.0%	68.4%	30.4%	1.2%	27.5%	32.3%	40.2%	4.5%	32.3%	63.2%	1.3%	31.8%	66.9%
1994	82.2%	17.8%	72.3%	27.7%	68.5%	30.1%	1.4%	27.0%	31.1%	41.9%	4.9%	31.9%	63.2%	1.5%	31.8%	66.7%
1995	82.9%	17.1%	76.0%	24.0%	71.4%	27.2%	1.4%	28.8%	28.3%	42.9%	4.4%	28.5%	67.1%			
1996	83.4%	16.6%	74.6%	25.4%	72.1%	27.0%	0.9%	29.4%	27.7%	42.9%						
1997	82.2%	17.8%	73.2%	26.8%	70.1%	28.7%	1.2%									
1998	81.6%	18.4%	74.8%	25.2%												
1999	83.2%	16.8%														
Average	83.2%	16.8%	74.0%	26.0%	70.3%	28.5%	1.2%	27.8%	29.6%	42.6%	4.1%	30.1%	65.7%	1.2%	29.9%	68.9%

Distribution of Degrees (Duplicated Count*)
1994-95 through 1999-00

	1994-95	1995-96	1996-97	1997-98	1998-99	1999-00
Bachelor of:						
Arts	1068	1000	917	894	871	910
Business Administration	719	666	820	886	865	951
Fine Arts	34	15	25	22	16	26
Music	19	19	21	32	26	24
Music Education	18	17	20	23	18	30
Bachelor of Science:						
Science	123	110	141	145	131	135
Aviation Sciences		8	3	8	5	5
Computer Science		17	15	20	21	38
Education	315	335	361	364	355	415
Engineering	27	31	23	21	24	24
Family & Consumer Sciences	52	50	51	48	37	38
Nursing	112	123	102	106	98	85
TOTAL BACHELOR DEGREES	2487	2391	2499	2569	2467	2681
Master of:						
Accountancy					10	18
Arts	80	86	82	81	62	61
Business Administration	112	112	117	116	109	103
Business Admin. in International Management	7	2	5	1	1	0
Christian Theology			2	0		
Clinical Gerontology	10	9	2	5	6	2
Divinity			30	14	16	48
Environmental Studies	4	1	6	4	5	2
Fine Arts	0	2	1	1	2	3
Health Administration	32	46	47	55	59	48
International Journalism	8	2	1	2	1	0
International Management	7	5	1	2	1	0
Music	23	24	25	23	25	24
Physical Therapy	21	24	23	24	18	22
Public Policy and Administration	9	9	3	6	2	7
Science	47	44	55	39	32	25
Taxation	12	17	14	6	8	18
Master of Science in:						
Clinical Psychology				21	7	12
Communication Sciences & Disorders	25	27	32	35	40	42
Dentistry	19	3				
Economics	1	0	6	2	7	5
Education	91	63	61	82	74	59
Gerontology	13	10	10	8	7	7
Information Systems					5	19
Limnology	1	0	0	3	1	0
Nursing	2	0	2	10	3	7
TOTAL MASTER'S DEGREES	524	486	525	540	501	532
TOTAL EDUCATION SPECIALIST DEGREES					1	0
TOTAL JURIS DOCTOR DEGREES	145	151	158	139	172	144
Doctor of:						
Education	15	19	17	13	17	21
Philosophy	23	21	14	20	26	25
Psychology	10	10	10	7	10	11
TOTAL DOCTORAL DEGREES	48	50	41	40	53	57
TOTAL DEGREES AWARDED	3204	3078	3223	3288	3194	3414

*Degree information on this page is reported beginning with the Summer semester and including the following Fall and Spring terms. An individual graduate with multiple majors is counted as a whole graduate in each major area of study (i.e., duplicated count).

Summary of Degrees Awarded (Unduplicated Count*)
1994-95 through 1999-00



Degree Level:	1994-95	1995-96	1996-97	1997-98	1998-99	1999-00
Bachelor	2,178	2,097	2,154	2,213	2,115	2,315
Master and Education Specialist	527	488	527	541	501	531
Juris Doctor	145	151	159	139	172	144
Doctor	48	50	41	40	53	57
Total Degrees Awarded*	2,898	2,786	2,881	2,933	2,841	3,047

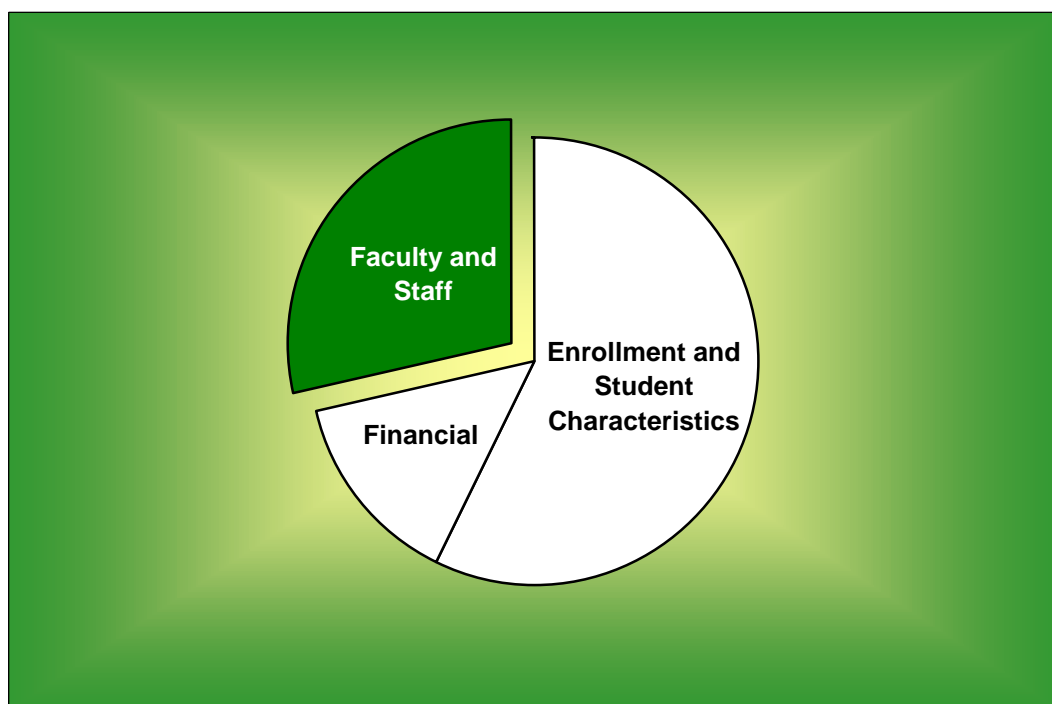
*The information on this page indicates the number of degree recipients (i.e., unduplicated count). Degree information for 1994-95 through 1999-00 is reported beginning with the Summer semester and including the following Fall and Spring terms.

**Degree Programs
(as of January 2001)**

Accounting (BBA)	Communication Sci. & Disorders (BA)	Fashion Design (BSFCS)
Accounting (MAcc)	Communication Sci. & Disorders (MSCSD)	Fashion Merchandising (BA)
Administrative Information Systems (BBA)	Communication Specialist (BA)	Fashion Merchandising (BSFCS)
American Studies (BA)	Communication Studies (MA)	Finance (BBA)
American Studies (MA)	Community Health (BSEd)	Financial Services / Planning (BBA)
Anthropology (BA)	Composition (BM)	Forensic Science (BS)
Applied Mathematics (BS)	Composition (MM)	Forestry (BA)
Applied Music (BM)	Computer Information Systems (BBA)	Forestry (BS)
Applied Sociology (PhD)	Computer Information Systems-CIS (BSEd)	French (BA)
Archaeology (BA)	Computer Information Systems-ISY (BSEd)	French (BSEd)
Architecture (BA)	Computer Science (BA)	General Family & Consumer Sci. (BA)
Art (BFA)	Computer Science (BSCS)	General Family & Consumer Sci. (BSFCS)
Art (BSEd)	Computer Science (MS)	General Studies in HHPR (BSEd)
Art History (BA)	Conducting (MM)	Generic Special Education (BSEd)
Asian Studies (BA)	Curriculum & Instruction (EdD)	Geography (BA)
Aviation Sciences (BSAvSc)	Curriculum & Instruction (EdS)	Geology (BS)
Basic Business (BBA)	Curriculum & Instruction (MA)	Geology (MS)
Biblical & Related Languages (BA)	Curriculum & Instruction (MSEd)	Geology (PhD)
Biochemistry (BA)	Dentistry (BA)	Geophysics (BS)
Biochemistry (BS)	Dentistry (BS)	German (BA)
Bioinformatics (BSI)	Design (BFA)	German (BSEd)
Biology (BA)	Directing (MFA)	Gerontology (MSG)
Biology (BS)	Earth Science (BA)	Greek (BA)
Biology (BSEd)	Earth Science (BSEd)	Health (BSEd)
Biology (MA)	Earth Science (MA)	Health Care Administration (MHA)
Biology (MS)	Economics (BA)	Health / Fitness Studies (BSEd)
Biology (PhD)	Economics (BBA)	Health, Human Performance & Recreation (MSEd)
Biomedical Studies (MS)	Economics (BS)	Health Science Studies (BSEd)
Biomedical Studies (PhD)	Economics (BSEd)	History (BA)
Business Administration (BA)	Economics (MSEco)	History (BSEd)
Business Administration (BSEd)	Education (MA)	History (MA)
Business Administration (MBA)	Educational Administration (EdD)	Human Performance (BSEd)
Business - Broadcasting (BBA)	Educational Administration (EdS)	Human Resources Management (BBA)
Business - Journalism (BBA)	Educational Administration (MSEd)	Information Systems Management (MBA)
Chemistry (BA)	Educational Psychology (EdS)	Information Systems (MSIS)
Chemistry (BS)	Educational Psychology (MA)	Instrumental Music (BME)
Chemistry (BSEd)	Educational Psychology (MSEd)	Interdisciplinary Studies (BSEd)
Chemistry (MS)	Educational Psychology (PhD)	Interior Design (BA)
Chemistry (PhD)	Electrical & Computer Engineering (BSE)	Interior Design (BSFCS)
Child & Family Studies (BA)	Engineering (BSE)	International Business (BBA)
Child & Family Studies (BSFCS)	English (BA)	International Economics (MA)
Choral Music (BME)	English (BSEd)	International Economics (MS)
Church Music (BM)	English (MA)	International Journalism (MIJ)
Church Music (MM)	English (PhD)	International Management (MBA)
Church Recreation (BSEd)	Entrepreneurship (BBA)	International Management (MBAIM)
Church-State Studies (MA)	Environmental Biology (MS)	International Management (MIM)
Church-State Studies (PhD)	Environmental Studies (BA)	International Relations (MA)
Classics (BA)	Environmental Studies (BS)	International Studies (BA)
Clinical Gerontology (MCG)	Environmental Studies (MES)	Journalism (BA)
Clinical Psychology (MSCP)	Environmental Studies (MS)	Journalism (BSEd)
Clinical Psychology (PsyD)	Family Nurse Practitioners (MSN)	Journalism (MA)
Communication Disorders (MA)	Fashion Design (BA)	Language and Linguistics (BA)

Latin American Studies (BA)	Physics (PhD)
Latin (BA)	Piano Accompanying (MM)
Latin (BSEd)	Piano Pedagogy & Performance (MM)
Law (BA)	Political Science (BA)
Law (BBA)	Political Science (BSEd)
Law (JD)	Political Science (MA)
Life - Earth Science (BSEd)	Professional Writing (BA)
Limnology (MSL)	Psychology (BA)
Management (BBA)	Psychology (BS)
Marketing (BBA)	Public Administration (BBA)
Mathematics (BA)	Public Policy & Administration (MPPA)
Mathematics (BS)	Quantitative Business Analysis (BBA)
Mathematics (BSEd)	Reading (BSEd)
Mathematics (MS)	Real Estate (BBA)
Mathematics (PhD)	Recreation (BSEd)
Mechanical Engineering (BSE)	Regional / Urban Studies (BBA)
Medical Technology & Biology (BS)	Religion (BA)
Medicine (BA)	Religion (MA)
Medicine (BS)	Religion (PhD)
Ministry (DMin)	Risk Management and Insurance (BBA)
Museum Studies (BA)	Russian (BA)
Museum Studies (BS)	Science (BSEd)
Museum Studies (MA)	Slavic and East European Studies (BA)
Music (BA)	Social Studies (BSEd)
Music Education (MM)	Social Work (BA)
Music History & Literature (BM)	Social Work (MSW)
Music History & Literature (MM)	Sociology (BA)
Music Theory (MM)	Sociology (BSEd)
Neonatal Nurse Practitioner (MSN)	Sociology (MA)
Neuroscience (BS)	Spanish (BA)
Neuroscience (MA)	Spanish (BSEd)
Neuroscience (PhD)	Spanish (MA)
Nursing Admin. & Management (MSN)	Speech Communication (BA)
Nursing (BSN)	Speech Communications (BSEd)
Nutrition Sciences (BA)	Speech & Language Therapy (BSEd)
Nutrition Sciences (BS)	Statistics (MA)
Nutrition Sciences (BSFCS)	Statistics (PhD)
Operations Management (BBA)	Studio Art (BA)
Optometry (BA)	Studio Art (BFA)
Optometry (BS)	Taxation (MT)
Pedagogy (BM)	Telecommunication (BA)
Performance (BFA)	Theater Arts (BA)
Performance (MM)	Theater Arts (BSEd)
Philosophy (BA)	Theater Arts (MA)
Philosophy (MA)	Theology (MDiv)
Physical Science (BSEd)	Theory (BM)
Physical Therapy (MPT)	University Scholars (BA)
Physics (BA)	
Physics (BS)	
Physics (BSEd)	
Physics (MA)	
Physics (MS)	

Faculty and Staff



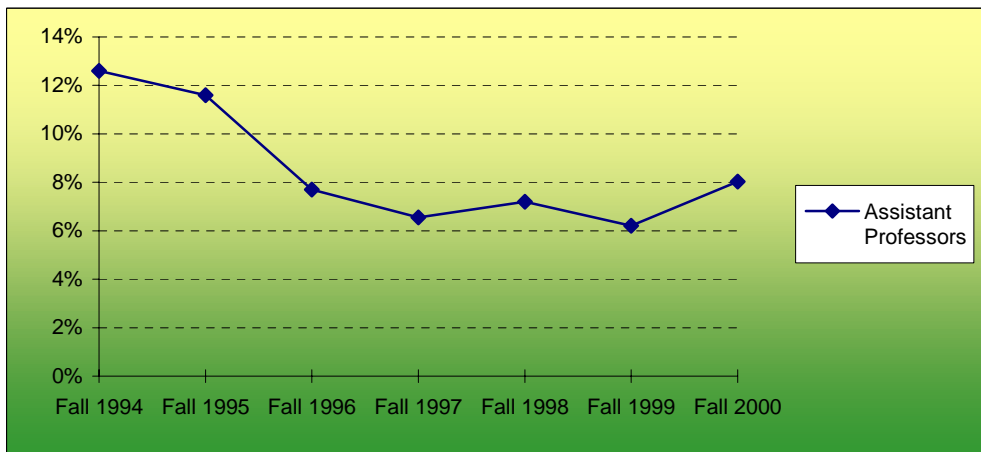
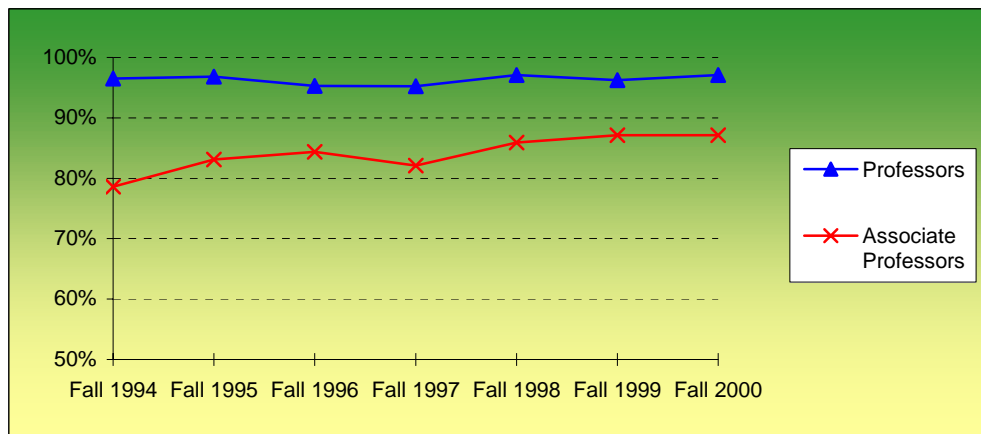
**Full-Time Faculty Positions
Fall 1994 - Fall 2000**

Rank	Fall 1994		Fall 1995		Fall 1996		Fall 1997		Fall 1998		Fall 1999		Fall 2000	
	Male	Female	Male	Female	Male	Female	Male	Female	Male	Female	Male	Female	Male	Female
Professors:														
Number	194	27	199	33	198	33	201	34	205	35	203	35	203	39
Tenured	187	27	190	31	190	30	194	32	198	35	195	34	197	38
Associate Prof.:														
Number	93	43	87	41	82	41	84	43	89	46	91	49	86	46
Tenured	79	34	76	32	67	34	68	37	78	38	79	43	74	41
Assistant Prof:														
Number	59	53	68	49	71	51	67	55	73	52	77	52	84	53
Tenured	3	10	2	7	3	5	3	7	2	7	2	6	5	6
Instructors:														
Number	1	2	0	2	0	2	0	2	0	1	0	1	0	3
Tenured	0	1	0	1	0	1	0	1	0	1	0	1	0	1
Lecturers:														
Number	51	76	45	76	55	73	47	73	50	78	51	91	53	95
Total Number	398	201	399	201	406	200	399	207	417	212	422	228	426	236
Total Tenured	269	72	268	71	260	70	265	77	278	81	276	84	276	86

**Highest Degree Earned by Full-Time Faculty
Fall 1994 - Fall 2000**

	Fall 1994	Fall 1995	Fall 1996	Fall 1997	Fall 1998	Fall 1999	Fall 2000
Bachelor's	0	0	0	1	1	0	0
Master's	141	141	135	138	145	150	159
Doctoral	437	438	449	448	463	478	480
Professional	21	21	22	19	20	22	23
Total	599	600	606	606	629	650	662

**Percentage of Full-Time Faculty with Tenure
Fall 1994 - Fall 2000**



	Fall 1994	Fall 1995	Fall 1996	Fall 1997	Fall 1998	Fall 1999	Fall 2000
Professors	96.5%	96.8%	95.3%	95.2%	97.1%	96.2%	97.1%
Associate Professors	78.6%	83.1%	84.4%	82.1%	85.9%	87.1%	87.1%
Assistant Professors	12.6%	11.6%	7.7%	6.6%	7.2%	6.2%	8.0%
Instructors	14.3%	33.3%	50.0%	50.0%	100.0%	100.0%	33.3%
All Faculty	55.7%	56.9%	56.5%	54.5%	57.1%	55.4%	54.7%

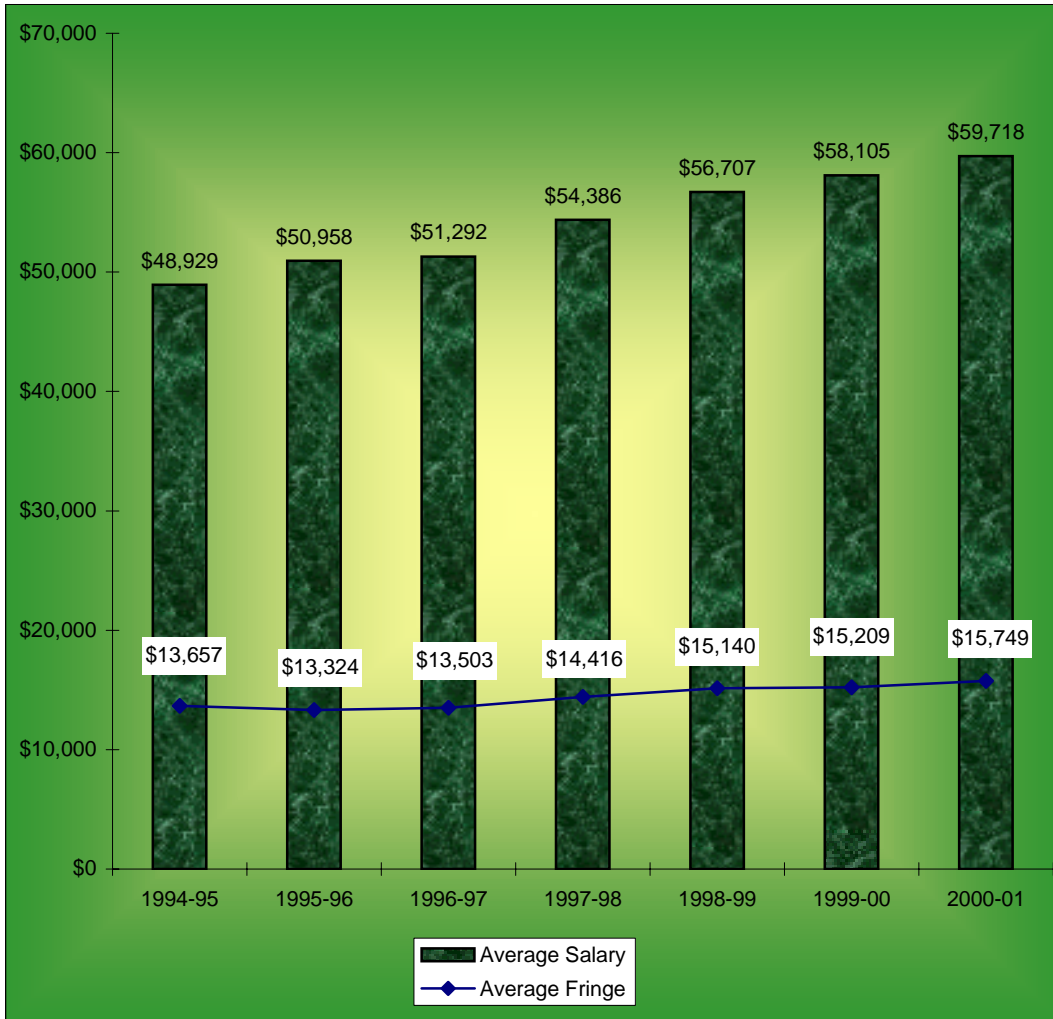
**Average Salaries of Full-Time Instructional Faculty
on Academic Year Contracts
Fall 1994 - Fall 2000**

Rank	Fall 1994		Fall 1995		Fall 1996		Fall 1997	
	Number in Rank	Average Salary	Number in Rank	Average Salary	Number in Rank	Average Salary	Number in Rank	Average Salary
Professor	221	\$63,599	232	\$65,450	231	\$67,094	235	\$70,565
Associate Professor	136	\$49,235	128	\$51,041	123	\$51,427	127	\$54,382
Assistant Professor	112	\$40,100	117	\$41,448	122	\$41,259	122	\$42,459
Instructor	3	*	2	*	2	*	2	*
Lecturer	127	\$30,984	121	\$32,504	128	\$32,473	120	\$35,127
All Ranks	599	\$48,929	600	\$50,958	606	\$51,292	606	\$54,386
Average Fringe		\$13,657		\$13,324		\$13,503		\$14,416
Fringe as a Percentage of Average Salary		27.9%		26.1%		26.3%		26.5%
Percentage Increase in Average Salary for Continuing Faculty		5.3%		5.2%		3.3%		6.7%

Rank	Fall 1998		Fall 1999		Fall 2000	
	Number in Rank	Average Salary	Number in Rank	Average Salary	Number in Rank	Average Salary
Professor	240	\$73,937	238	\$77,289	242	\$79,299
Associate Professor	135	\$56,977	140	\$58,365	132	\$60,511
Assistant Professor	125	\$44,193	129	\$45,423	137	\$47,530
Instructor	1	*	1	*	3	*
Lecturer	128	\$36,420	142	\$37,309	148	\$38,525
All Ranks	629	\$56,707	650	\$58,105	662	\$59,718
Average Fringe		\$15,140		\$15,209		\$15,749
Fringe as a Percentage of Average Salary		26.7%		26.2%		26.4%
Percentage Increase in Average Salary for Continuing Faculty		4.6%		4.3%		4.1%

*Data not displayed for five or fewer faculty.

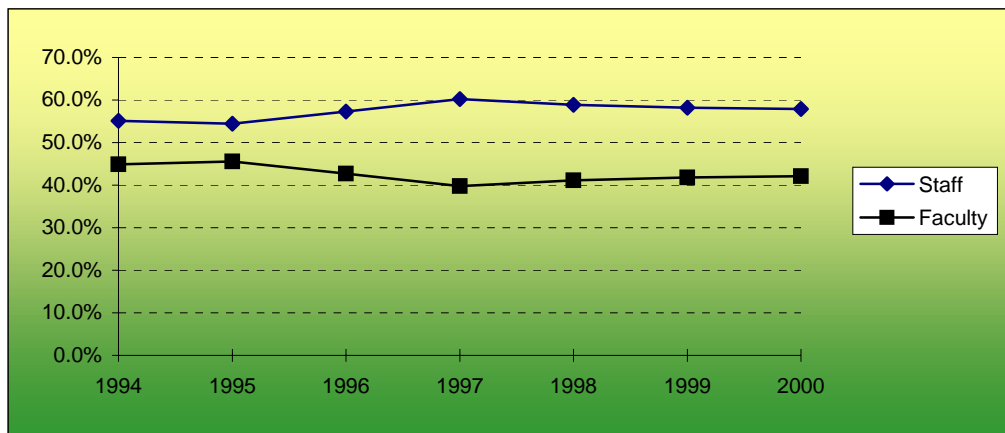
**Average Compensation of Full-Time Instructional Faculty
on Academic Year Contracts
1994-95 through 2000-01**



**Institutional Staff
Fall 1994 - Fall 2000**

Fall	1994	1995	1996	1997	1998	1999	2000
Faculty:							
Full-Time	599	600	606	596	619	641	655
Part-Time	56	79	58	49	86	114	133
Chief Administrators	14	14	14	16	15	17	16
Other Administrators:							
Full-Time	62	60	60	90	95	97	100
Part-Time				1			
Professional (Non-Academic):							
Full-Time	18	18	18	42	38	39	41
Part-Time	2	2	3	0	0	0	0
Salaried Staff:							
Full-Time	348	371	424	440	455	453	491
Part-Time	10	15	18	22	21	21	12
Hourly Staff:							
Full-Time	288	275	288	292	310	349	353
Part-Time	61	56	66	74	74	74	72
Total	1458	1490	1555	1622	1713	1805	1873

**Percentage of Institutional Staff
Fall 1994 - Fall 2000**



Fall	1994	1995	1996	1997	1998	1999	2000
Staff	55.1%	54.4%	57.3%	60.2%	58.8%	58.2%	57.9%
Faculty	44.9%	45.6%	42.7%	39.8%	41.2%	41.8%	42.1%

**Full-Time Faculty* by Religious Affiliation
Fall 1994 - Fall 2000**

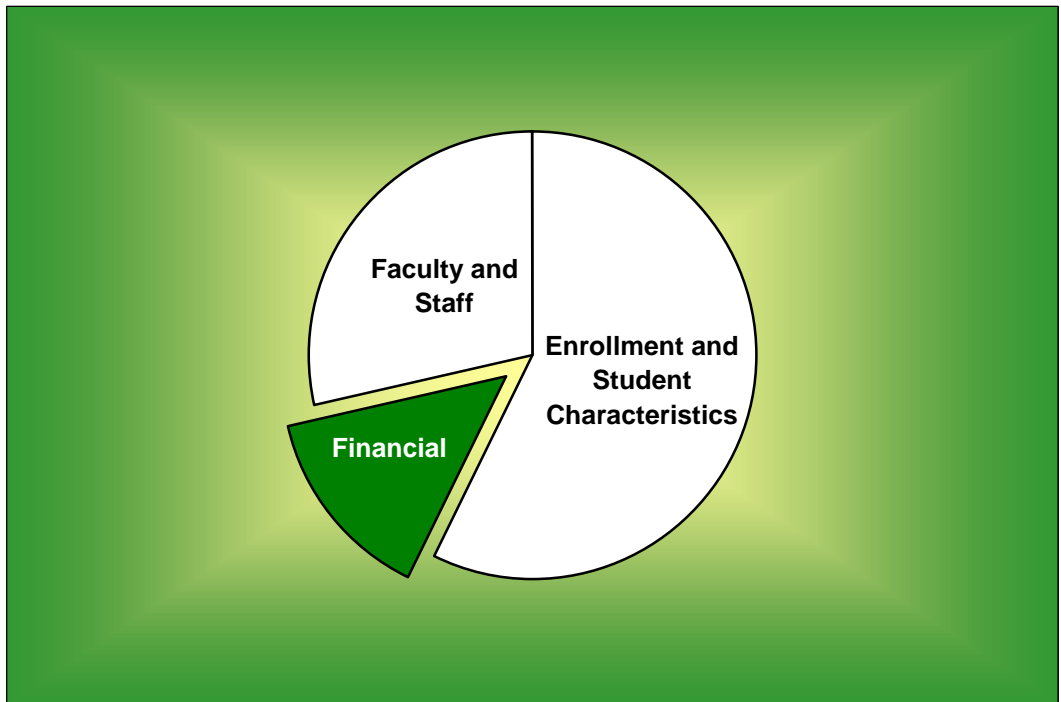
Fall	1994	1995	1996	1997	1998	1999	2000
Assembly of God	1	1	1	1	1	1	1
Baptist	309	306	302	294	307	315	315
Catholic	42	44	47	46	51	45	51
Church of Christ	12	13	12	16	16	15	16
Disciples of Christ	15	16	16	16	16	13	11
Episcopalian	39	38	40	45	47	49	45
Lutheran	35	36	38	34	35	38	38
Methodist	66	68	71	71	73	70	71
Non-Denominational	9	10	9	10	11	11	16
Presbyterian	44	39	40	40	39	36	41
Other / Unspecified	27	29	30	33	33	57	57
Total	599	600	606	606	629	650	662

*AAUP definition.

**Full-Time Staff by Religious Affiliation
Fall 1994 - Fall 2000**

Fall	1994	1995	1996	1997	1998	1999	2000
Assembly of God	4	4	4	6	5	4	6
Baptist	433	448	475	507	493	484	507
Catholic	62	63	63	73	76	84	86
Church of Christ	21	24	24	25	26	30	32
Disciples of Christ	23	19	21	19	17	20	17
Episcopalian	19	20	15	17	17	17	15
Lutheran	25	29	29	30	27	33	37
Methodist	72	80	80	83	90	96	99
Non-Denominational	9	9	9	13	13	20	24
Presbyterian	8	11	12	13	17	17	21
Other / Unspecified	57	49	56	57	96	115	123
Total	733	756	788	843	877	920	967

Financial



**Tuition and Other Semester Charges
1994-95 through 2000-01**

	1994-95	1995-96	1996-97	1997-98	1998-99	1999-00	2000-01
Tuition per Semester Hour	\$232.00	\$258.00	\$269.00	\$288.00	\$308.00	\$329.00	\$355.00
Increase from Prior Year	7.9%	11.2%	4.3%	7.1%	6.9%	6.8%	7.9%
Application Fee	25.00	25.00	25.00	25.00	35.00	35.00	35.00
Applied Music Fee(1)	75.00	75.00	85.00	90.00	96.00	105.00	110.00
Change-of-Course Fee	20.00	20.00	20.00	20.00	20.00	20.00	20.00
Chapel-Forum Fee	10.00	10.00	10.00	10.00	15.00	15.00	25.00
Credit by Baylor Exam Fee	116.00	129.00	134.50	144.00	154.00	164.50	177.50
General Student Fee	300.00	320.00	335.00	385.00	427.00	490.00	524.00
Enrollment Deposit (2)	100.00	100.00	100.00	100.00	100.00	100.00	100.00
Lab/Course Fees (3)	25.00	25.00	25.00	25.00	25.00	25.00	25.00
Late Registration Fee (4)	20.00	20.00	20.00	20.00	20.00	20.00	20.00
Student Life Fee	1.00	1.00	1.00	1.00	1.00	1.00	1.00
Technology Fee					85.00	90.00	95.00
Vehicle Registration Fee (5)	70.00	70.00	90.00	95.00	120.00	145.00	170.00
Room	870.00	895.00	922.00	950.00	979.00	1,050.00	1,124.00
Increase from Prior Year	3.0%	2.9%	3.0%	3.0%	3.1%	7.3%	7.0%
Board (6)	1,060.00	1,085.00	1,113.00	1,170.00	1,205.00	1,240.00	1,278.00
Increase from Prior Year	2.9%	2.4%	2.6%	5.1%	3.0%	2.9%	3.1%

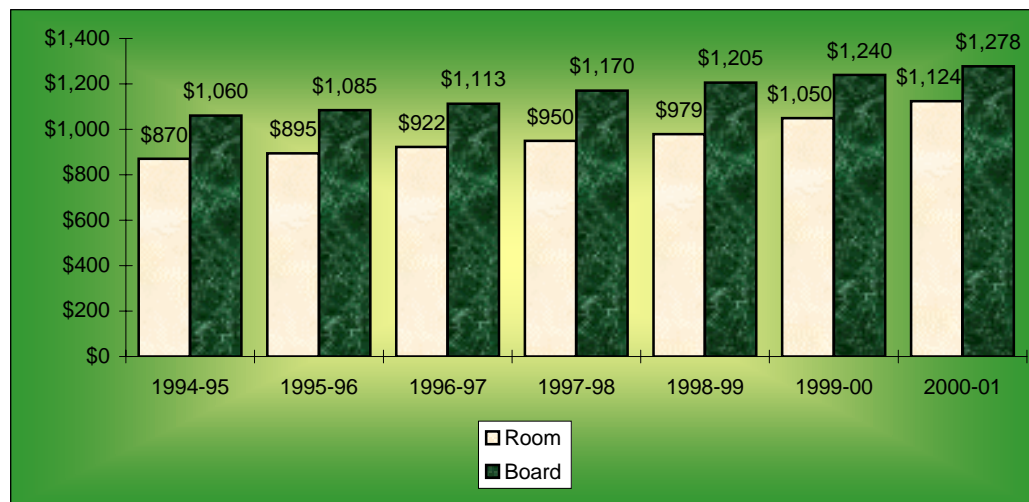
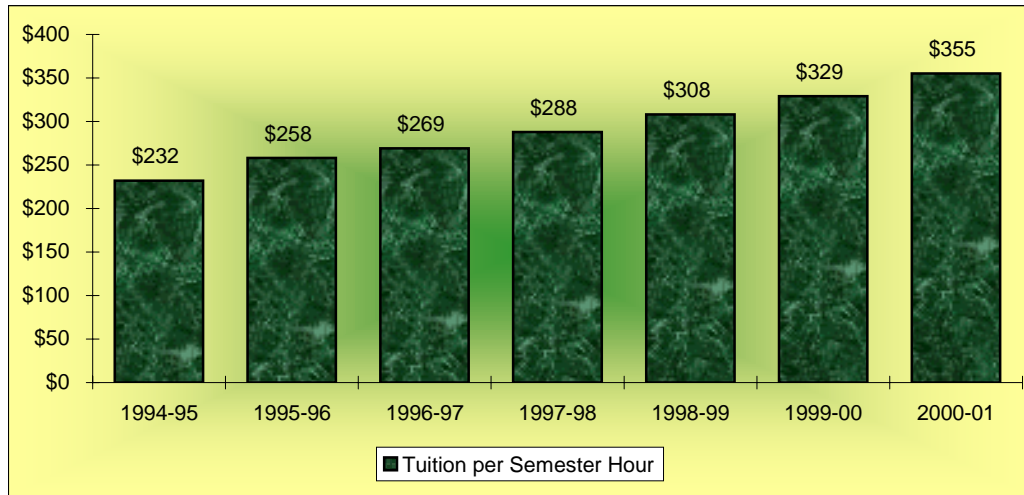
Increase in Semester Charges from 1994-95 to 2000-01:

Tuition per hour	53.0%
Room	29.2%
Board	20.6%

Notes:

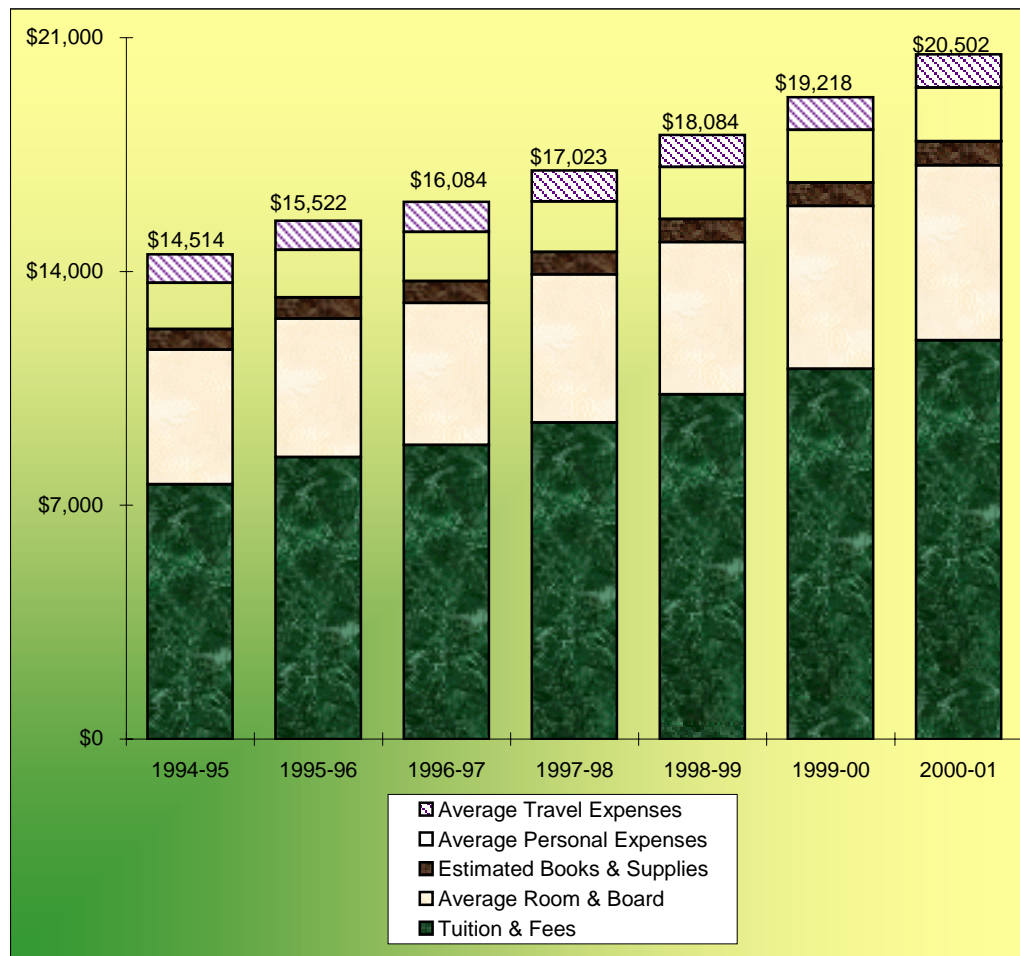
- (1) Supplemental charge per semester for one 30-minute lesson per week.
- (2) In 1998, the General University Deposit became an Enrollment Deposit. The Enrollment Deposit is paid to assure enrollment place and is applied on the student's first semester bill.
- (3) Minimum lab fee is \$25; some courses may be higher.
- (4) Fee is graduated: \$20.00 first through third class days, \$30.00 fourth through ninth class days, \$50.00 tenth class day and after.
- (5) Annual automobile fee (September - August).
- (6) Twenty meal plan, per semester, not including sales tax.

Tuition, Room and Board Charges 1994-95 through 2000-01



Annual Undergraduate Student Cost Profile 1994-95 through 2000-01

	1994-95	1995-96	1996-97	1997-98	1998-99	1999-00	2000-01
Tuition & Fees	\$7,624	\$8,444	\$8,806	\$9,478	\$10,316	\$11,082	\$11,940
Average Room & Board	4,034	4,140	4,254	4,433	4,566	4,874	5,238
Estimated Books & Supplies	616	634	652	670	690	702	716
Average Personal Expenses	1,386	1,426	1,468	1,512	1,556	1,586	1,616
Average Travel Expenses	854	878	904	930	956	974	992
Average Total Cost	\$14,514	\$15,522	\$16,084	\$17,023	\$18,084	\$19,218	\$20,502
Increase from Prior Year	5.4%	6.9%	3.6%	5.8%	6.2%	6.3%	6.7%



Operating Funds*
1995-96 through 1999-00

Sources of Revenues

	1995-96	1996-97	1997-98	1998-99	1999-00
Tuition & Fees	\$95,631,950	\$101,979,942	\$111,333,824	\$131,549,785	\$145,105,566
Gifts & Private Grants	3,674,822	4,609,984	6,248,707	8,244,782	6,926,099
Baptist General Convention of Texas Appropriation	3,686,271	3,928,739	4,039,046	3,994,879	4,078,147
Endowment Income	10,454,210	11,159,003	12,098,349	12,111,256	12,678,477
Investment Income	1,792,538	1,930,310	2,212,007	2,364,681	2,826,020
Other Sources	9,526,460	9,199,834	10,292,257	9,599,477	13,710,214
Auxiliary Enterprises	25,912,697	29,497,606	32,582,644	35,561,127	36,679,685
Total Revenues	\$150,678,948	\$162,305,418	\$178,806,834	\$203,425,987	\$222,004,208

Sources of Revenues as a Percentage of Total Revenues

	1995-96	1996-97	1997-98	1998-99	1999-00
Tuition & Fees	63.5%	62.8%	62.2%	64.6%	65.5%
Gifts & Private Grants	2.4%	2.8%	3.5%	4.1%	3.1%
Baptist General Convention of Texas Appropriation	2.4%	2.4%	2.3%	2.0%	1.8%
Endowment Income	7.0%	6.9%	6.8%	6.0%	5.7%
Investment Income	1.2%	1.2%	1.2%	1.2%	1.3%
Other Sources	6.3%	5.7%	5.8%	4.7%	6.2%
Auxiliary Enterprises	17.2%	18.2%	18.2%	17.4%	16.4%
Total Revenues	100.0%	100.0%	100.0%	100.0%	100.0%

*Due to a change in reporting, only the years 1995-96 through 1999-00 are shown.

Source: Controller's Office

**Operating Funds (Continued)*
1995-96 through 1999-00**

Expenditures by Function

	1995-96	1996-97	1997-98	1998-99	1999-00
Instruction	\$63,714,510	\$64,887,596	\$69,394,793	\$73,484,863	\$78,132,224
Acad Support, Resrch & Pub Service	12,432,041	13,226,633	13,945,393	16,847,590	18,662,339
Student Services	10,129,853	10,569,350	9,473,902	9,152,085	11,165,359
Plant Operations & Maintenance	9,762,895	10,138,633	10,429,262	11,889,750	14,220,616
Institutional Support	14,519,229	17,944,285	18,169,021	23,709,606	26,511,017
Scholarships & Fellowships	10,275,992	11,606,819	12,954,165	15,630,383	18,955,785
Auxiliary Enterprises	24,031,521	26,926,149	30,842,634	35,375,307	37,884,043
Discretionary Transfers	5,795,124	6,984,749	13,572,228	17,318,040	16,453,711
Total Expenditures	150,661,165	162,284,214	178,781,398	203,407,624	221,985,094
Excess Revenues	\$17,783	\$21,204	\$25,436	\$18,363	\$19,114

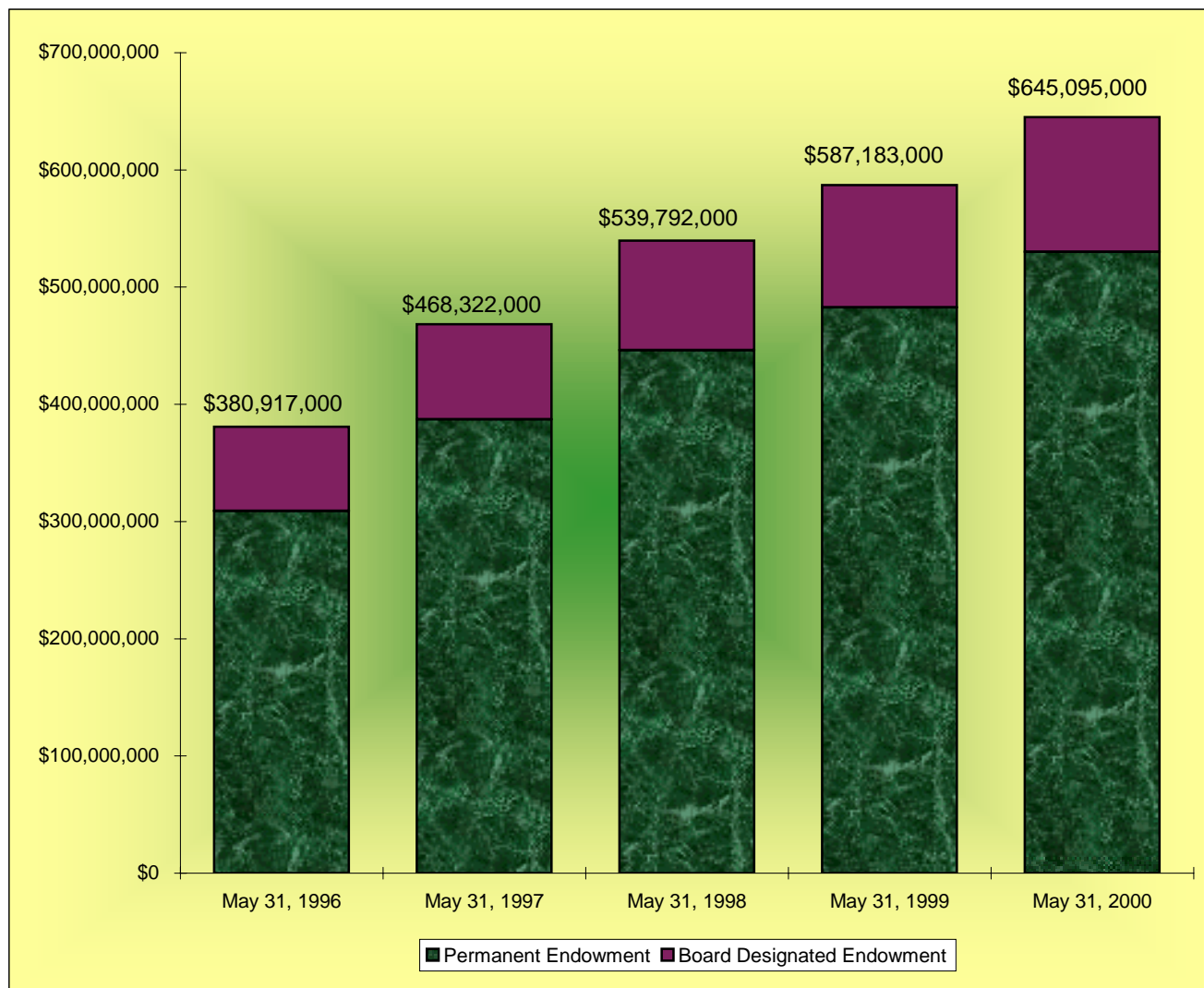
**Expenditures by Function as a
Percentage of Total Expenditures**

	1995-96	1996-97	1997-98	1998-99	1999-00
Instruction	42.3%	40.0%	38.8%	36.1%	35.2%
Acad Support, Resrch & Pub Service	8.3%	8.2%	7.8%	8.3%	8.4%
Student Services	6.7%	6.5%	5.3%	4.5%	5.0%
Plant Operations & Maintenance	6.5%	6.2%	5.8%	5.8%	6.4%
Institutional Support	9.6%	11.1%	10.2%	11.7%	11.9%
Scholarships & Fellowships	6.8%	7.2%	7.2%	7.7%	8.5%
Auxiliary Enterprises	16.0%	16.6%	17.3%	17.4%	17.1%
Discretionary Transfers	3.8%	4.3%	7.6%	8.5%	7.4%
Total Expenditures	100.0%	100.0%	100.0%	100.0%	100.0%

*Due to a change in reporting, only the years 1995-96 through 1999-00 are shown.

**Endowment Fund Balance - Market Value*
1995-96 through 1999-00**

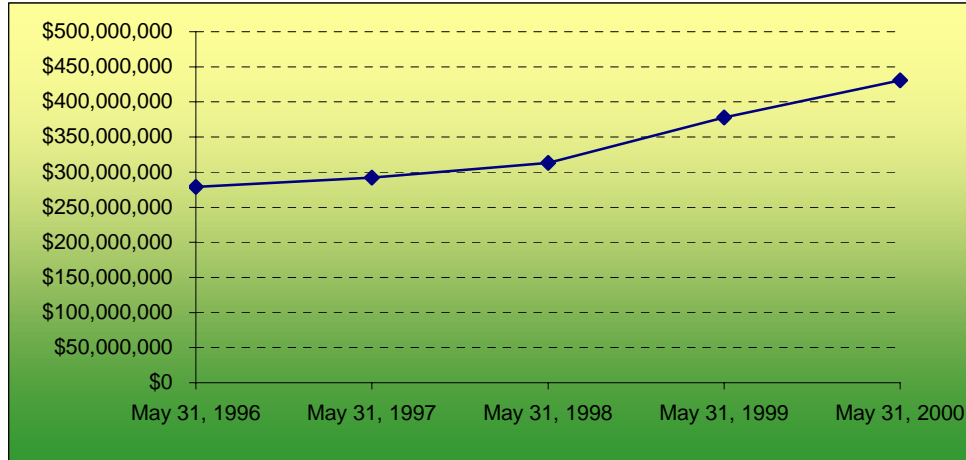
	May 31, 1996	May 31, 1997	May 31, 1998	May 31, 1999	May 31, 2000
Permanent Endowment	\$308,914,000	\$387,211,000	\$446,150,000	\$482,807,000	\$529,979,000
Board Designated Endowment	72,003,000	81,111,000	93,642,000	104,376,000	115,116,000
Total Endowment	\$380,917,000	\$468,322,000	\$539,792,000	\$587,183,000	\$645,095,000
Permanent Endowment	81.1%	82.7%	82.7%	82.2%	82.2%
Board Designated Endowment	18.9%	17.3%	17.3%	17.8%	17.8%
Total Endowment	100.0%	100.0%	100.0%	100.0%	100.0%



*Due to a change in reporting, only the years 1995-96 through 1999-00 are shown.

**Property, Plant and Equipment*
1995-96 through 1999-00**

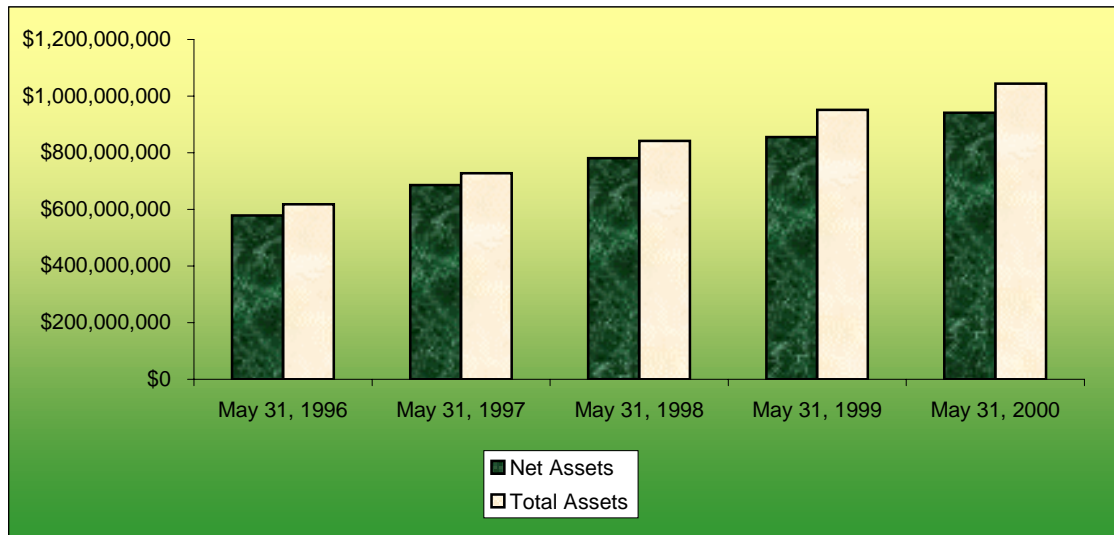
	May 31, 1996	May 31, 1997	May 31, 1998	May 31, 1999	May 31, 2000
Property, Plant & Equipment	\$278,960,000	\$292,070,000	\$312,970,000	\$378,059,000	\$430,619,000



*Does not reflect the impact of accumulated depreciation.

Assets
1995-96 through 1999-00**

	May 31, 1996	May 31, 1997	May 31, 1998	May 31, 1999	May 31, 2000
Net Assets	\$578,970,000	\$685,591,000	\$780,752,000	\$855,595,000	\$941,304,000
Total Assets	\$618,171,000	\$727,520,000	\$841,823,000	\$951,390,000	\$1,043,535,000



**Due to a change in accounting standards, only the years 1995-96 through 1999-00 are shown.