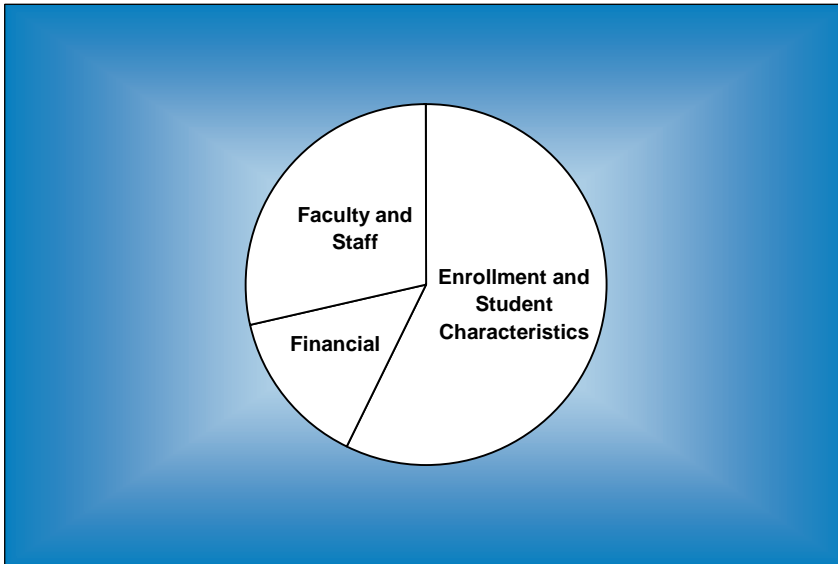


BAYLOR TRENDS



Fall 1995 - Fall 2001

Volume XIII

Prepared by the Office of Information Management and Testing Services, March 2002

<http://www.baylor.edu/IMTS/>

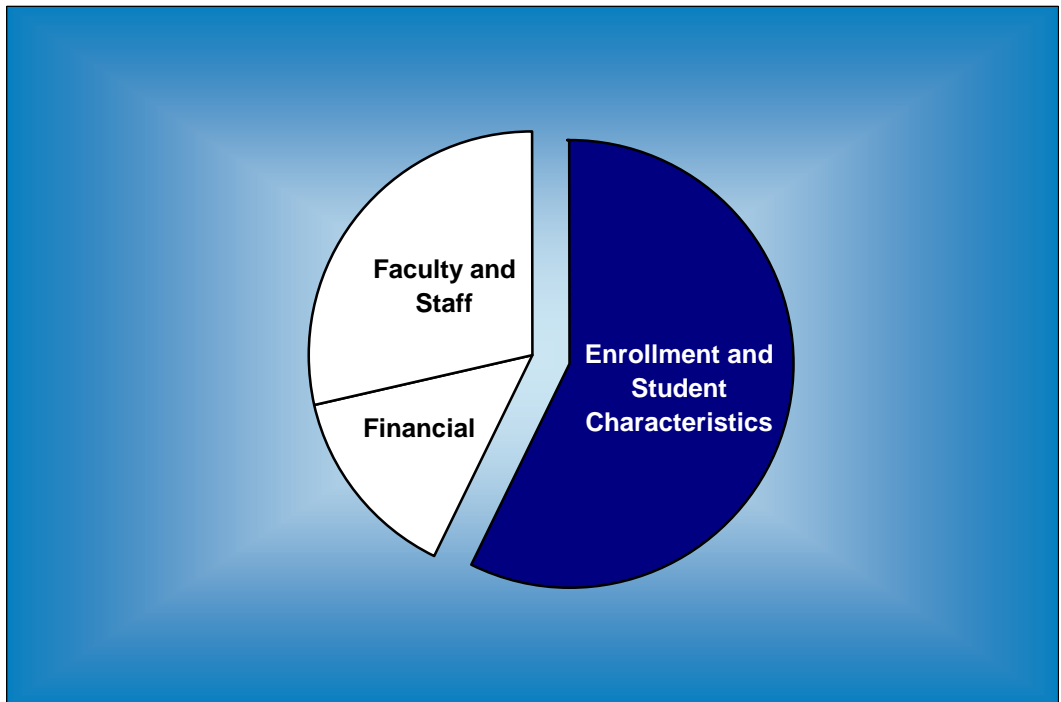
Table of Contents

	Page
ENROLLMENT AND STUDENT CHARACTERISTICS	
<i>New Freshman Applications and Enrollment</i>	1
<i>Transfer Applications and Enrollment</i>	1
<i>New Freshman Applications and Enrollment by Gender</i>	2
<i>New Freshman and Transfer Student Enrollment</i>	3
<i>Enrollment by Classification</i>	4
<i>Enrollment</i>	5
<i>Enrollment by Gender, Waco Campus</i>	6
<i>Enrollment by Religious Affiliation, Waco Campus</i>	7
<i>Baptist Percentage, Waco Campus</i>	7
<i>Enrollment by Racial/Ethnic Group</i>	8
<i>Racial/Ethnic Minority Percentage</i>	8
<i>Leading Texas Counties of Origin</i>	9
<i>Leading States of Origin</i>	9
<i>Percentage from Top Four Texas Counties</i>	10
<i>Percentage from Texas</i>	10
<i>Texas Enrollment by County</i>	11
<i>Enrollment by State</i>	12
<i>Countries Represented by Nonresident Aliens</i>	13
<i>Percentage of Nonresident Aliens</i>	13
<i>Enrollment by Unit</i>	14
<i>Enrollment Percentage by Unit</i>	15
<i>Student Credit Hours by Unit, Waco Campus</i>	16
<i>Retention of First-Time Freshman Classes</i>	17
<i>Distribution of Degrees</i>	18
<i>Summary of Degrees Awarded</i>	19
<i>Degree Programs</i>	20
FACULTY AND STAFF	
<i>Full-Time Faculty Positions</i>	22
<i>Highest Degree Earned by Full-Time Faculty</i>	22
<i>Percentage of Full-Time Faculty with Tenure</i>	23
<i>Average Salaries of Full-Time Instructional Faculty on Academic Year Contracts</i>	24
<i>Average Compensation of Full-Time Instructional Faculty on Academic Year Contracts</i>	25
<i>Institutional Staff</i>	26
<i>Percentage of Institutional Staff</i>	26
<i>Full-Time Faculty by Religious Affiliation</i>	27
<i>Full-Time Staff by Religious Affiliation</i>	27

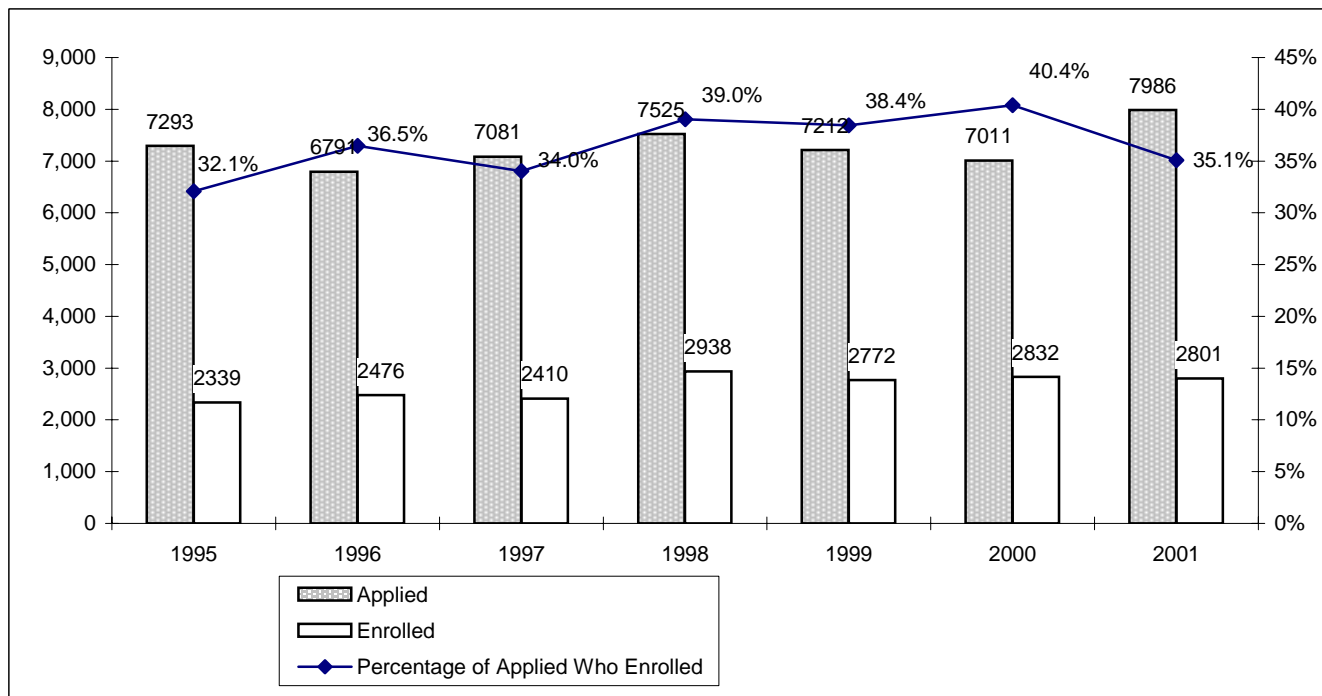
FINANCIAL

Tuition and Other Semester Charges28
Tuition, Room and Board Charges29
Annual Undergraduate Student Cost Profile30
Operating Funds:
 Sources of Revenues.....31
 Sources of Revenue as a Percentage of Total Revenues.....31
 Expenditures by Functions32
 Expenditures by Functions as a Percentage of Total Expenditures.....32
Endowment Fund Balance - Market Value33
Property, Plant and Equipment34
Assets.....34

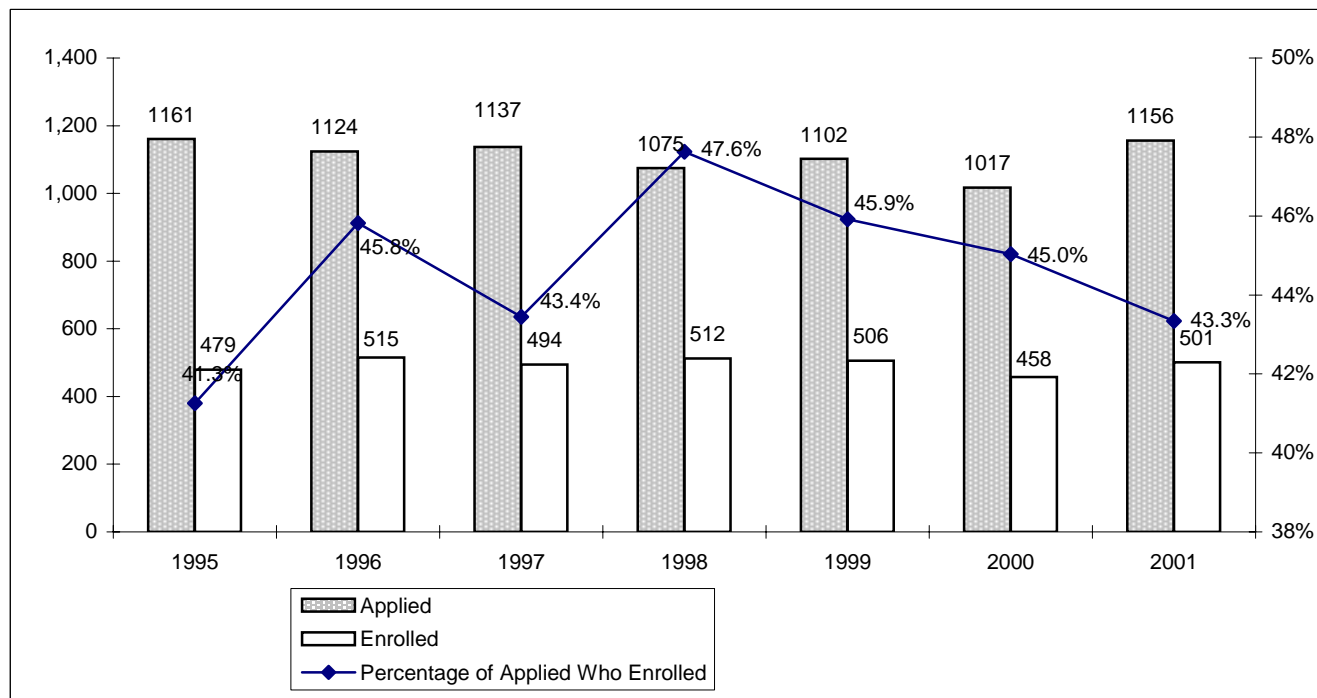
Enrollment and Student Characteristics



**New Freshman Applications and Enrollment*
Fall 1995 - Fall 2001**

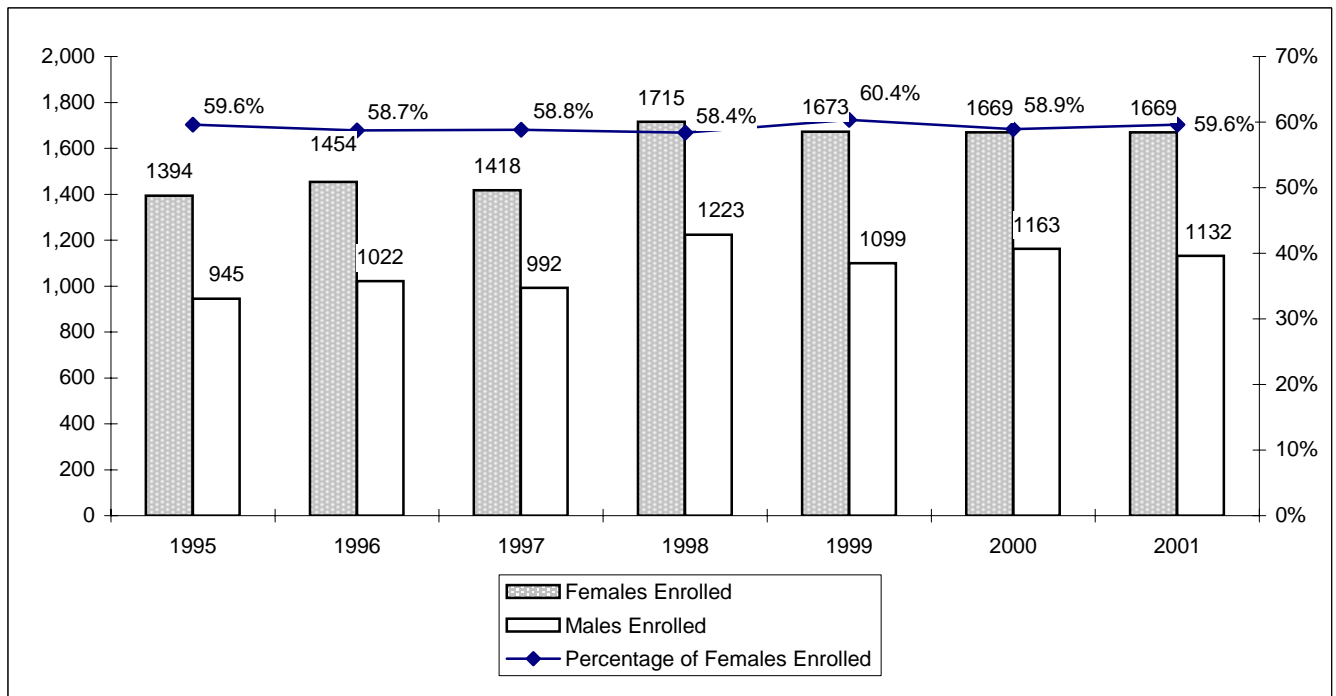
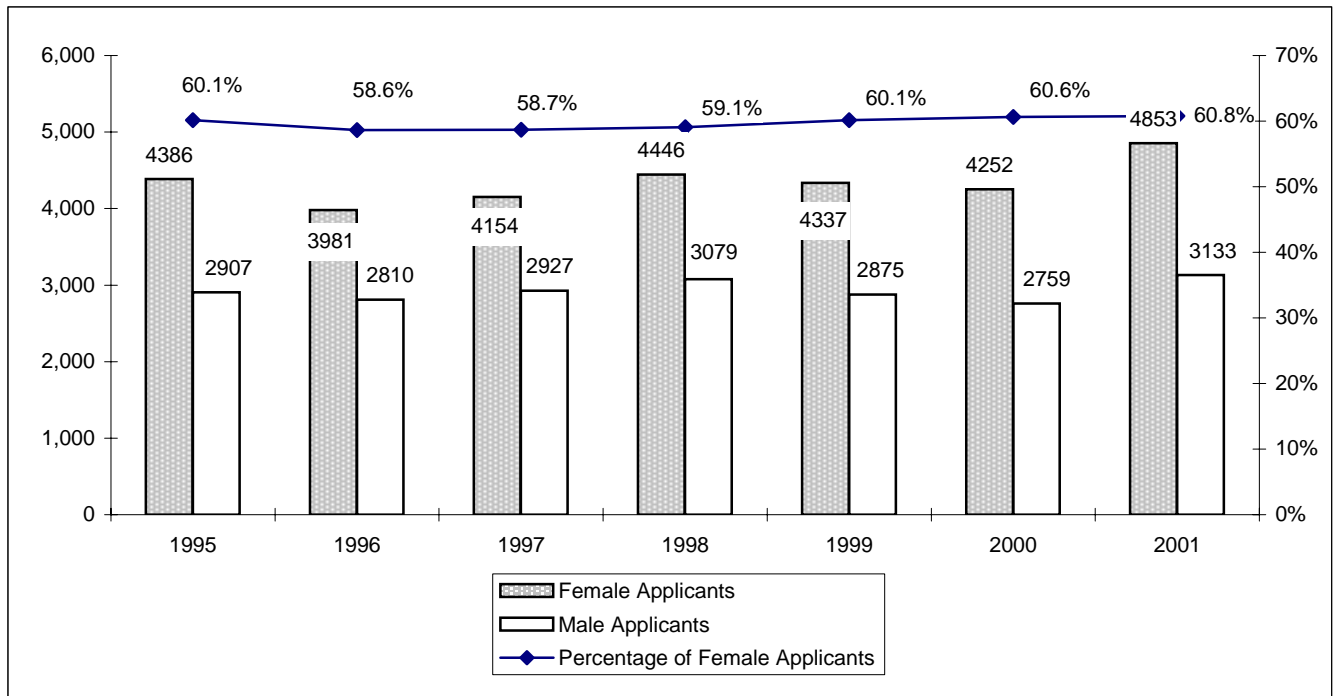


**Transfer Applications and Enrollment*
Fall 1995 - Fall 2001**



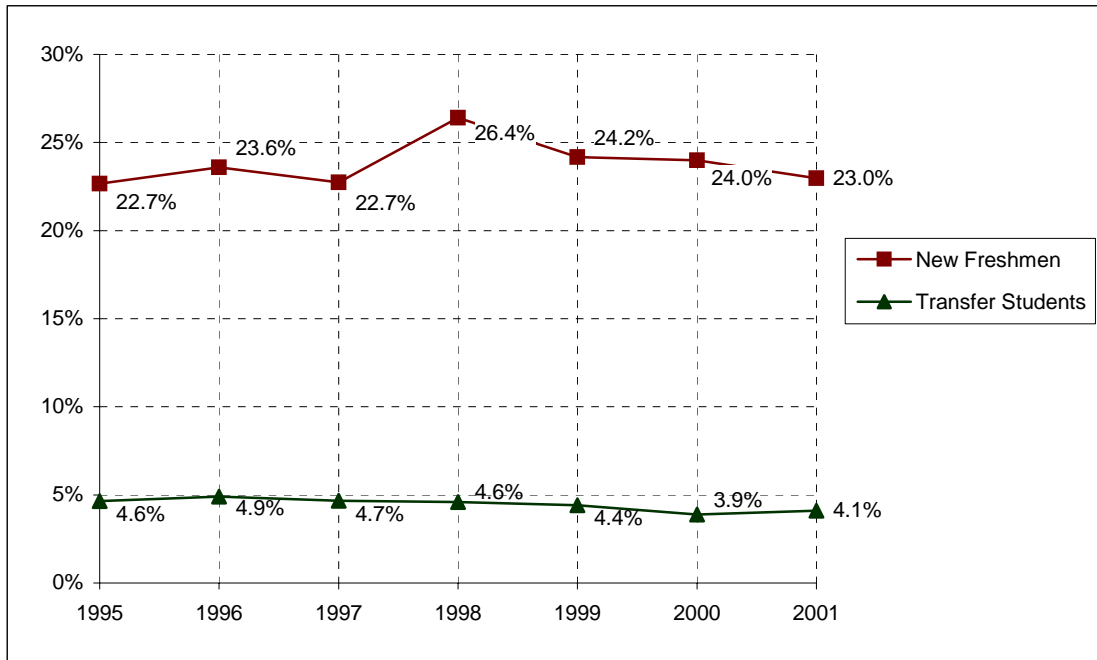
*Applications that were canceled and changed to future terms not included through 1998. Enrollment as of 12th class day.

New Freshman Applications and Enrollment by Gender*
Fall 1995 - Fall 2001



*Applications that were canceled and changed to future terms not included through 1998. Enrollment as of 12th class day.

**New Freshman and Transfer Student Enrollment
Fall 1995 - Fall 2001**



	Fall	1995	1996	1997	1998	1999	2000	2001
New Freshmen		2,339	2,476	2,410	2,938	2,772	2,832	2,801
New Transfer Students		479	515	494	512	506	458	501
Undergraduate Enrollment		10,323	10,500	10,597	11,124	11,472	11,806	12,190
% New Freshmen		22.7%	23.6%	22.7%	26.4%	24.2%	24.0%	23.0%
% New Transfer Students		4.6%	4.9%	4.7%	4.6%	4.4%	3.9%	4.1%

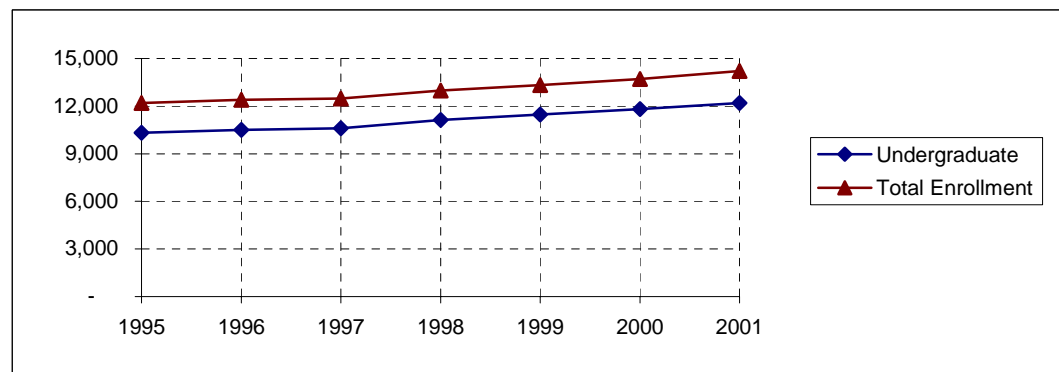
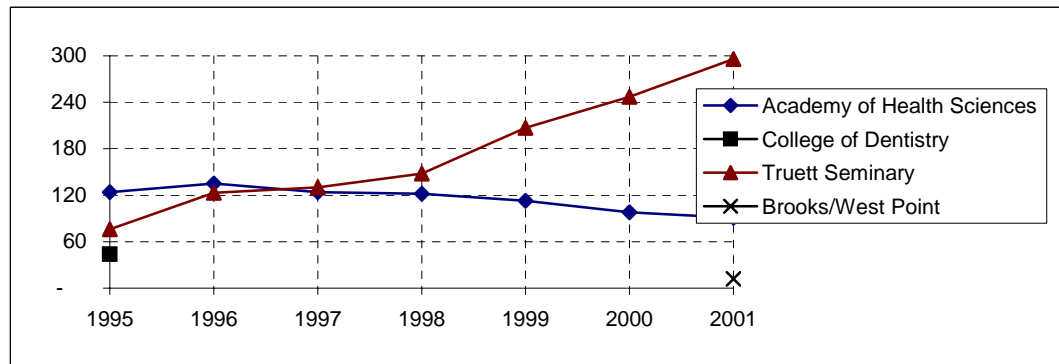
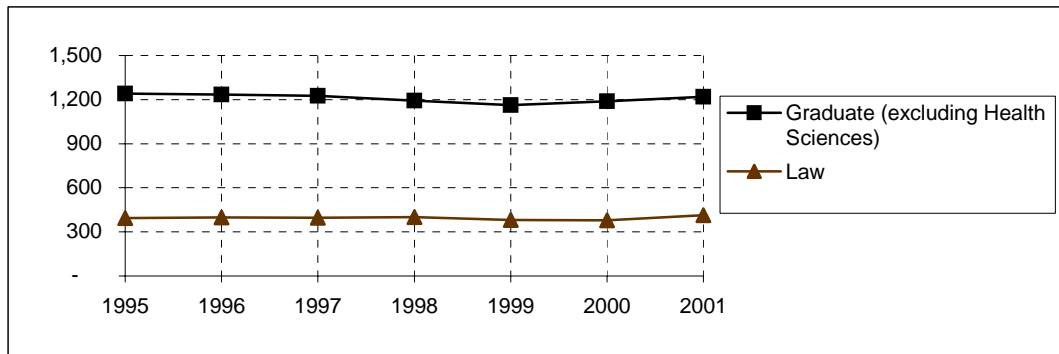
Notes:

1. Freshmen who enter the University in the fall or preceding summer term are counted as "new freshmen." Similarly, transfer students entering in the fall or preceding summer term are counted as "transfer students" for the fall semester.
2. "Transfer students" refers to the entering summer/fall group of transfer students. For example, in Fall 1998, the 512 entering transfer students comprised 4.6% of the 11,124 undergraduates. However, for Fall 1998, the total number of enrolled undergraduates who had transferred into the University consisted of (a) transfers who entered in Fall 1998 and (b) students who transferred into the University in previous academic years. Generally, the total enrollment of students who had entered as transfer students is approximately 15% of the undergraduate student body.

**Enrollment by Classification
Fall 1995 - Fall 2001**

	Fall	1995	1996	1997	1998	1999	2000	2001
Freshman		3,043	3,151	3,070	3,566	3,534	3,678	3,613
Sophomore		2,230	2,210	2,458	2,333	2,619	2,565	2,686
Junior		2,182	2,166	2,139	2,314	2,244	2,516	2,565
Senior		2,646	2,819	2,774	2,779	2,956	2,916	3,194
Special		22	26	40	28	29	26	23
Postbaccalaureate		200	128	116	104	90	105	109
TOTAL UNDERGRADUATE		10,323	10,500	10,597	11,124	11,472	11,806	12,190
Master's		854	854	821	807	760	788	802
Doctoral		347	349	356	360	373	379	397
Graduate Transient/Nondegree			23	28	10	6	6	11
Special Graduate		40	9	20	15	18	8	-
Graduate Professional						5	8	9
TOTAL "WACO" GRADUATE		1,241	1,235	1,225	1,192	1,162	1,189	1,219
School of Law		394	398	396	401	380	379	413
Truett Seminary		76	123	130	148	207	247	296
Academy of Health Sciences		124	135	124	122	113	98	91
Brooks/West Point								12
College of Dentistry		44						
TOTAL ENROLLMENT		12,202	12,391	12,472	12,987	13,334	13,719	14,221

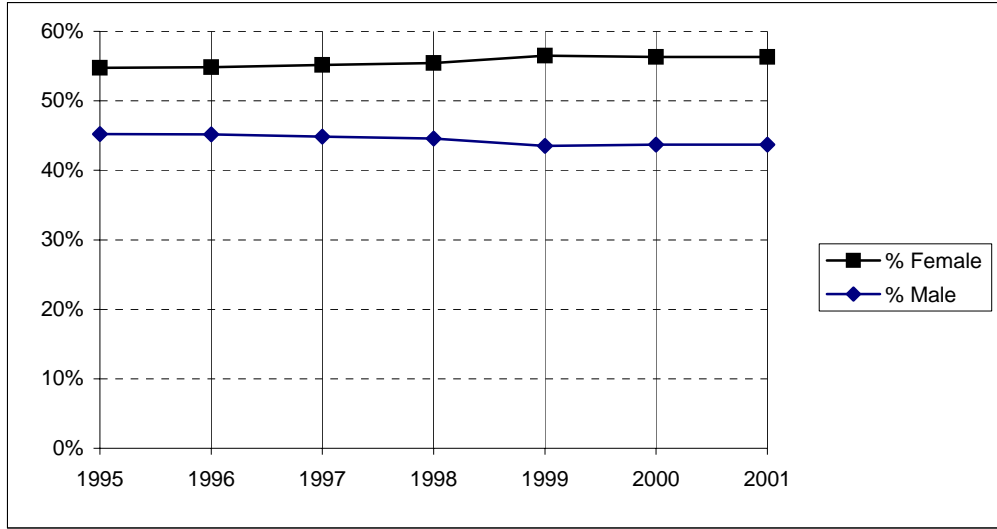
Enrollment
Fall 1995 - Fall 2001



	Fall	1995	1996	1997	1998	1999	2000	2001
Undergraduate		10,323	10,500	10,597	11,124	11,472	11,806	12,190
Graduate (excluding Health Sciences)		1,241	1,235	1,225	1,192	1,162	1,189	1,219
Law		394	398	396	401	380	379	413
Truett Seminary		76	123	130	148	207	247	296
TOTAL (excluding Health Sciences)		12,034	12,256	12,348	12,865	13,221	13,621	14,118
College of Dentistry		44						
Academy of Health Sciences		124	135	124	122	113	98	91
Brooks/West Point								12
TOTAL ENROLLMENT		12,202	12,391	12,472	12,987	13,334	13,719	14,221

Source: IMTS.

**Enrollment by Gender
(Excluding Health Sciences)
Fall 1995 - Fall 2001**

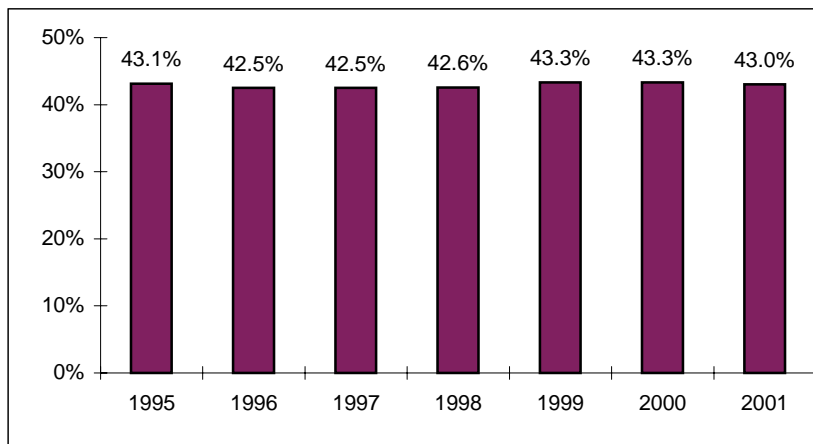


	Fall	1995	1996	1997	1998	1999	2000	2001
Female		6,591	6,719	6,809	7,131	7,467	7,670	7,950
Male		5,443	5,537	5,539	5,734	5,754	5,951	6,168
Total (excluding Health Sciences)		12,034	12,256	12,348	12,865	13,221	13,621	14,118
% Female		54.8%	54.8%	55.1%	55.4%	56.5%	56.3%	56.3%
% Male		45.2%	45.2%	44.9%	44.6%	43.5%	43.7%	43.7%

**Enrollment by Religious Affiliation
(Excluding Health Sciences)
Fall 1995 - Fall 2001**

Fall	1995	1996	1997	1998	1999	2000	2001
Assembly of God	149	157	148	149	153	135	135
Baptist	5,192	5,208	5,247	5,475	5,727	5,903	6,076
Buddhist	84	75	66	70	72	70	77
Catholic	1,511	1,528	1,544	1,590	1,619	1,674	1,694
Christian Scientist	8	8	6	8	5	2	10
Church of Christ	269	246	243	260	254	287	279
Church of God	23	32	18	25	19	19	25
Congregational	21	20	14	14	16	16	23
Disciples of Christ	89	85	83	81	89	88	73
Eastern Orthodox	44	44	45	44	27	29	31
Episcopalian	307	289	271	271	302	310	307
Four Square Gospel	9	13	11	9	7	10	9
Hindu	59	65	75	67	77	83	88
Interdenominational	370	389	403	425	429	466	460
Jehovah's Witness	7	9	9	9	14	12	11
Jewish	17	10	10	8	11	9	17
Latter Day Saints (Mormon)	22	19	19	22	19	21	19
Lutheran	363	383	346	383	398	396	386
Mennonite	4	4	3	5	7	7	5
Methodist	1,227	1,274	1,190	1,168	1,163	1,203	1,251
Moslem	48	55	56	58	77	86	100
Nazarene	23	27	30	29	34	27	28
Non-Denominational						102	251
Pentecostal	68	74	72	67	80	88	106
Presbyterian	554	542	528	532	518	552	571
Society of Friends	7	7	6	7	5	4	4
Unitarian	9	11	8	6	8	9	8
United Brethren	3	5	6	6	8	6	4
Other/Not Specified	1,547	1,677	1,891	2,077	2,083	2,007	2,070
TOTAL RELIGION	12,034	12,256	12,348	12,865	13,221	13,621	14,118

**Baptist Percentage
(Excluding Health Sciences)
Fall 1995 - Fall 2001**



**Enrollment by Racial / Ethnic Group*
Fall 1995 - Fall 2001**

A.

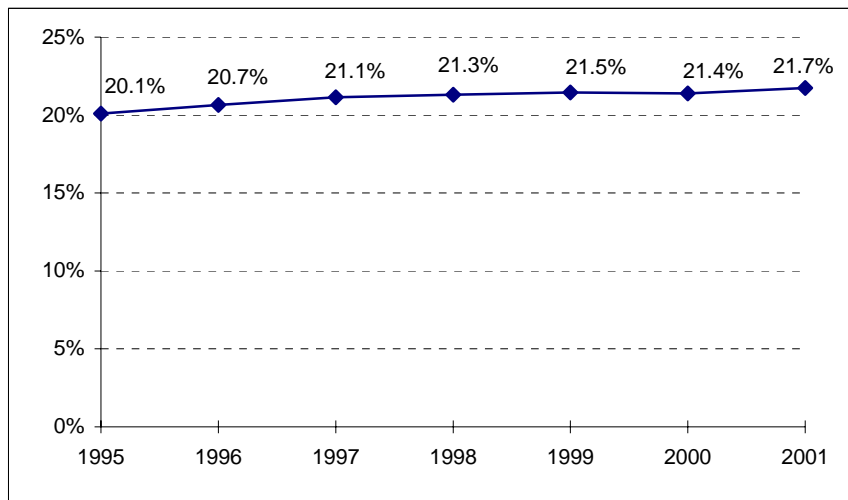
	Fall	1995	1996	1997	1998	1999	2000	2001
African American/Black		529	623	685	726	751	750	774
American Indian/Alaskan Native		60	60	64	74	65	64	63
Asian/Pacific Islander		777	796	793	809	847	876	903
Hispanic		956	931	917	941	959	967	1,051
White		9,662	9,739	9,717	9,995	10,278	10,671	11,033
Other		129	149	178	216	239	276	301
Not Specified		89	93	118	226	195	115	96
Total		12,202	12,391	12,472	12,987	13,334	13,719	14,221

B.

	Fall	1995	1996	1997	1998	1999	2000	2001
African American/Black		517	609	675	713	731	733	753
American Indian/Alaskan Native		60	60	63	73	64	64	63
Asian/Pacific Islander		633	646	635	636	648	664	669
Hispanic		912	893	880	918	936	939	1,017
White		9,598	9,681	9,656	9,934	10,225	10,612	10,967
Other		97	120	149	189	209	237	258
Not Specified		77	81	112	212	181	108	91
NONRESIDENT ALIEN		308	301	302	312	340	362	403
Total		12,202	12,391	12,472	12,987	13,334	13,719	14,221

*In Table B, nonresident aliens are partitioned as a group.

**Racial / Ethnic Minority Percentage
Fall 1995 - Fall 2001
(From Table A)**



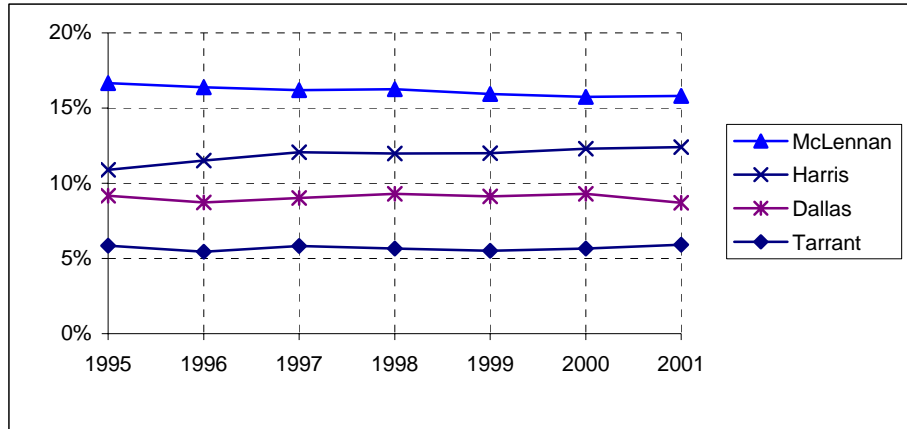
**Leading Texas Counties of Origin
Fall 1995 - Fall 2001**

Fall	1995	1996	1997	1998	1999	2000	2001
McLennan	2,033	2,030	2,020	2,112	2,124	2,161	2,248
Harris	1,328	1,425	1,505	1,556	1,601	1,687	1,763
Dallas	1,120	1,080	1,125	1,208	1,217	1,276	1,238
Tarrant	714	675	726	734	735	777	840
Bexar	460	489	508	570	528	532	521
Collin	277	302	304	363	431	489	505
Fort Bend	165	172	194	218	237	299	331
Travis	248	242	238	267	283	304	326
Montgomery	136	151	184	204	224	253	273
Bell	200	220	220	234	203	206	237
Smith	85	90	97	117	128	123	149
Gregg	122	126	125	118	134	141	144
Williamson	96	110	110	115	133	125	138
Denton	103	124	139	145	131	131	136
Brazoria	64	63	61	64	79	90	117
Galveston	102	104	106	98	105	119	117
Taylor	41	49	48	71	89	94	102
Nueces	92	89	93	95	91	89	98
El Paso	94	90	78	90	93	105	97
Johnson	53	51	56	64	72	76	89
Jefferson	77	77	78	87	91	88	83
Hidalgo	115	105	87	107	94	81	79

**Leading States of Origin
Fall 1995 - Fall 2001**

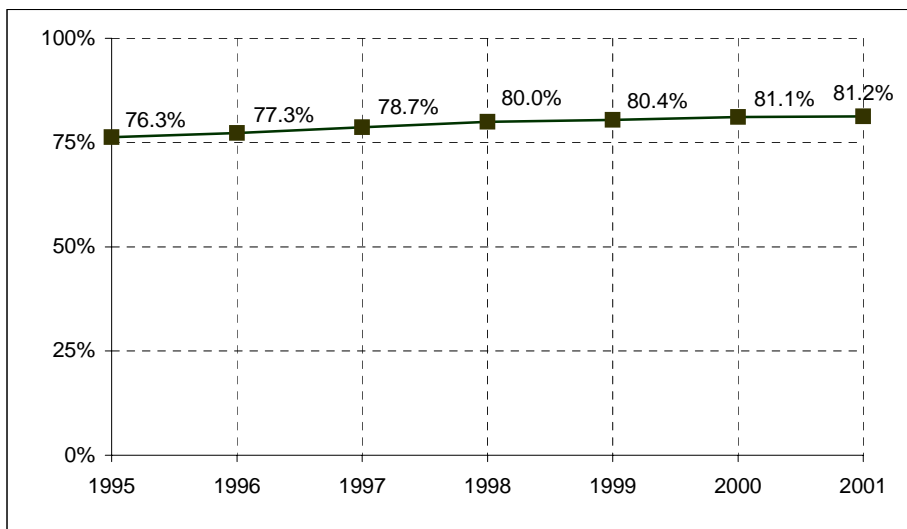
Fall	1995	1996	1997	1998	1999	2000	2001
Texas	9,311	9,579	9,811	10,386	10,726	11,128	11,553
California	259	286	278	273	268	250	246
Oklahoma	245	254	247	237	229	218	221
Louisiana	180	163	157	147	146	144	163
Colorado	148	145	149	135	134	134	138
Arkansas	154	157	140	122	113	118	132
Missouri	150	148	122	111	116	114	111
Kansas	108	111	105	110	109	111	110
Illinois	89	82	79	78	73	80	88
New Mexico	87	84	73	70	76	63	76
Tennessee	118	99	103	88	82	84	74

**Percentage From Top Four Texas Counties
Fall 1995 - Fall 2001**



Fall	1995	1996	1997	1998	1999	2000	2001
McLennan	16.7%	16.4%	16.2%	16.3%	15.9%	15.8%	15.8%
Harris	10.9%	11.5%	12.1%	12.0%	12.0%	12.3%	12.4%
Dallas	9.2%	8.7%	9.0%	9.3%	9.1%	9.3%	8.7%
Tarrant	5.9%	5.4%	5.8%	5.7%	5.5%	5.7%	5.9%

**Percentage From Texas
Fall 1995 - Fall 2001**

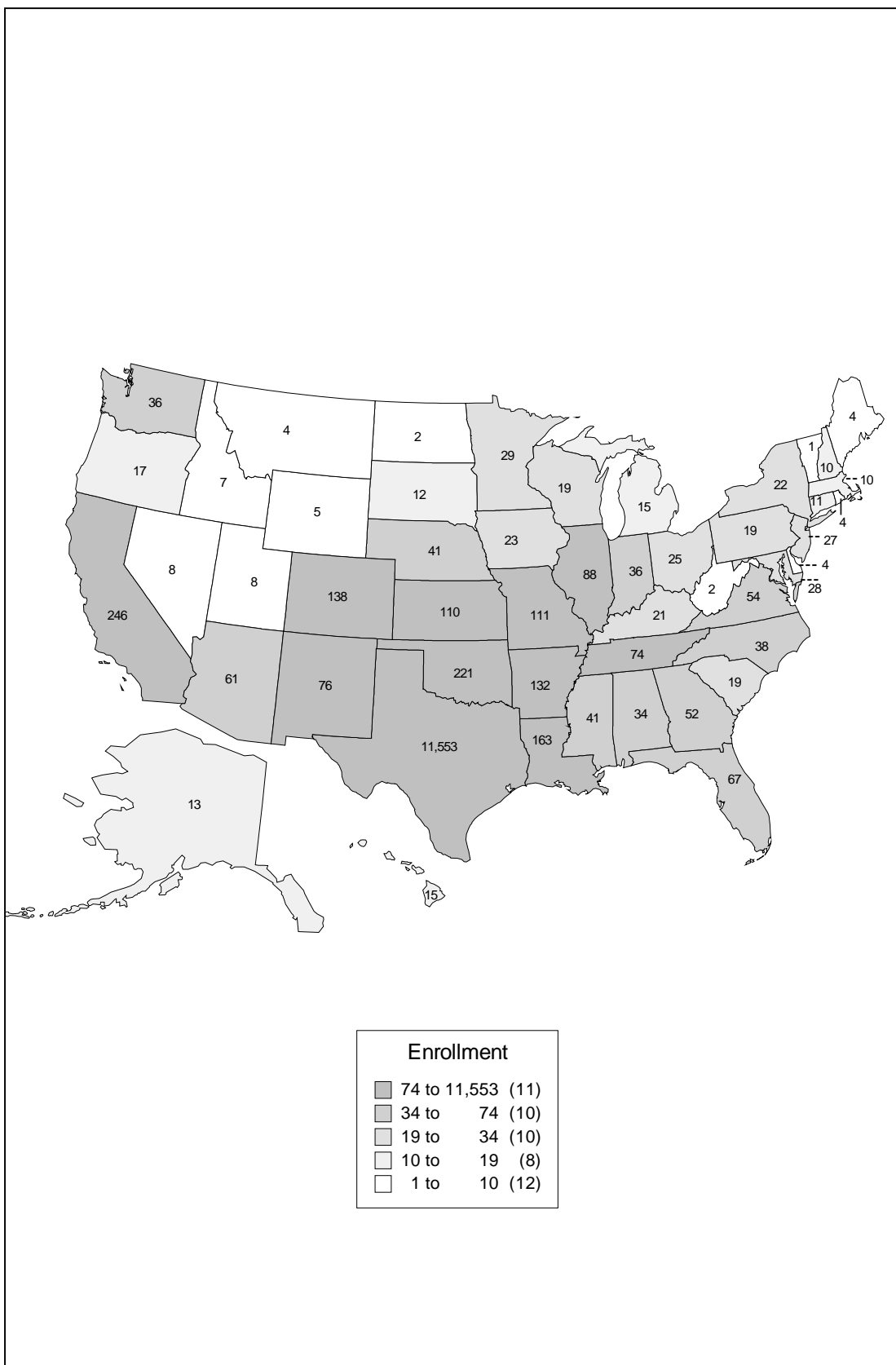


Texas Enrollment by County
Fall 2001

	n		n		n		n		n
Anderson	23	Crane	0	Hartley	1	Madison	1	San Patricio	10
Andrews	4	Crockett	0	Haskell	1	Marion	3	San Saba	3
Angelina	27	Crosby	0	Hays	19	Martin	0	Schleicher	0
Aransas	2	Culberson	2	Hemphill	0	Mason	1	Scurry	8
Archer	0	Dallam	1	Henderson	23	Matagorda	12	Shackelford	2
Armstrong	0	Dallas	1,238	Hidalgo	79	Maverick	21	Shelby	14
Atascosa	5	Dawson	0	Hill	42	McCulloch	2	Sherman	1
Austin	19	De Witt	4	Hockley	2	McLennan	2,248	Smith	149
Bailey	3	Deaf Smith	1	Hood	9	McMullen	1	Somervell	2
Bandera	3	Delta	1	Hopkins	13	Medina	3	Starr	3
Bastrop	7	Denton	136	Houston	9	Menard	3	Stephens	4
Baylor	0	Dickens	1	Howard	4	Midland	41	Sterling	0
Bee	6	Dimmit	2	Husdpeth	0	Milam	14	Stonewall	0
Bell	237	Donley	1	Hunt	22	Mills	1	Sutton	5
Bexar	521	Duval	0	Hutchinson	10	Mitchell	2	Swisher	1
Blanco	2	Eastland	6	Irion	0	Montague	5	Tarrant	840
Borden	0	Ector	25	Jack	3	Montgomery	273	Taylor	102
Bosque	29	Edwards	1	Jackson	2	Moore	4	Terrell	0
Bowie	25	El Paso	97	Jasper	11	Morris	6	Terry	1
Brazoria	117	Ellis	58	Jeff Davis	0	Motley	0	Throckmorton	0
Brazos	33	Erath	7	Jefferson	83	Nacagdoches	27	Titus	21
Brewster	1	Falls	16	Jim Hogg	0	Navarro	24	Tom Green	17
Briscoe	0	Fannin	8	Jim Wells	3	Newton	2	Travis	326
Brooks	1	Fayette	6	Johnson	89	Nolan	7	Trinity	4
Brown	12	Fisher	1	Jones	3	Nueces	98	Tyler	4
Burleson	2	Floyd	1	Karnes	4	Ochiltree	1	Upshur	21
Burnett	20	Foard	0	Kaufman	31	Oldham	0	Upton	0
Caldwell	8	Fort Bend	331	Kendall	25	Orange	15	Uvalde	4
Calhoun	7	Franklin	6	Kenedy	0	Palo Pinto	3	Val Verde	5
Callahan	2	Freestone	11	Kent	0	Panola	10	Van Zandt	12
Cameron	60	Frio	1	Kerr	24	Parker	50	Victoria	36
Camp	3	Gaines	0	Kimble	0	Parmer	0	Walker	13
Carson	1	Galveston	117	King	0	Pecos	1	Waller	2
Cass	13	Garza	2	Kinney	0	Polk	8	Ward	2
Castro	0	Gillespie	7	Kleberg	4	Potter	73	Washington	18
Chambers	3	Glasscock	0	Knox	0	Presidio	0	Webb	31
Cherokee	18	Goliad	1	La Salle	2	Rains	1	Wharton	14
Childress	1	Gonzales	3	Lamar	11	Randall	10	Wheeler	0
Clay	0	Gray	5	Lamb	1	Reagan	2	Wichita	22
Cochran	0	Grayson	31	Lampasas	8	Real	1	Wilbarger	4
Coke	0	Gregg	144	Lavaca	14	Red River	0	Willacy	4
Coleman	5	Grimes	1	Lee	6	Reeves	1	Williamson	138
Collin	505	Guadalupe	38	Leon	5	Refugio	2	Wilson	13
Collingworth	1	Hale	9	Liberty	26	Roberts	0	Winkler	3
Colorado	4	Hall	0	Limestone	26	Robertson	3	Wise	7
Comal	30	Hamilton	5	Lipscomb	0	Rockwall	63	Wood	11
Comanche	4	Hansford	2	Live Oak	1	Runnels	0	Yoakum	1
Concho	1	Hardeman	1	Llano	8	Rusk	13	Young	6
Cooke	11	Hardin	8	Loving	0	Sabine	3	Zapata	0
Coryell	37	Harris	1,763	Lubbock	47	San Augustine	1	Zavala	0
Cottle	1	Harrison	23	Lynn	1	San Jacinto	1	Total	11,553

Source: ICUT.

Enrollment by State
Fall 2001

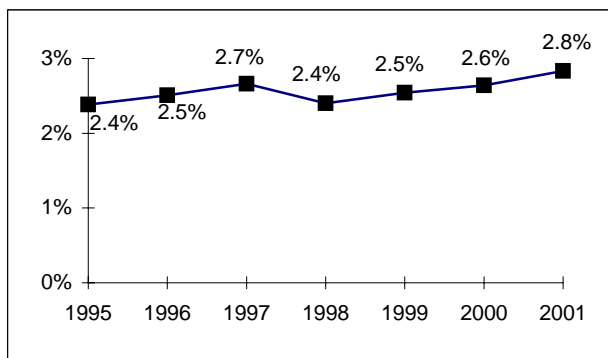


**Countries Represented by Nonresident Aliens
Fall 1995 - Fall 2001**

	Fall	1995	1996	1997	1998	1999	2000	2001		Fall	1995	1996	1997	1998	1999	2000	2001
Albania	-	1	-	-	-	-	-	-	Macao	1	1	-	-	-	-	-	-
Argentina	1	1	-	-	-	1	2	6	Malaysia	3	-	1	4	2	2	2	2
Australia	3	7	5	5	3	5	5	5	Mali	-	-	-	-	2	2	2	2
Austria	-	-	-	1	1	1	-	-	Mauritius	-	-	1	1	1	1	-	-
Bahamas	-	-	-	1	2	2	2	2	Mexico	15	18	15	9	6	9	9	9
Bangladesh	-	2	3	4	3	2	3	3	Moldova	2	-	-	-	-	-	-	-
Belgium	-	-	2	2	2	1	1	1	Nepal	-	-	-	1	1	1	1	1
Belize	1	1	3	1	1	1	1	1	Netherlands	2	3	1	1	1	1	-	-
Bolivia	-	-	1	-	-	-	1	1	New Zealand	-	1	1	1	1	2	1	1
Brazil	1	1	2	1	4	2	5	5	Nicaragua	-	-	-	1	-	1	2	2
British Virgin Islands	-	1	1	1	1	1	1	-	Nigeria	3	3	4	8	8	7	10	10
Bulgaria	4	5	7	8	6	6	6	6	North Mariana Isle	-	-	-	2	1	1	1	1
Byelarus	1	-	-	-	-	-	-	-	Norway	8	5	5	3	-	1	2	2
Cambodia	-	-	-	-	-	-	-	1	Pakistan	2	5	1	1	9	8	9	9
Cameroon	-	-	-	-	-	-	-	1	Panama	4	5	5	1	1	-	1	1
Canada	13	11	12	16	15	17	16	16	Peru	-	-	-	-	-	-	1	1
Cayman Islands	-	1	2	-	-	-	-	1	Philippines	-	-	-	1	-	-	-	-
Chile	3	2	2	2	2	1	-	-	Poland	4	4	4	2	2	2	1	1
China*	55	60	56	56	62	64	65	65	Romania	2	2	5	4	5	3	4	4
Columbia	9	6	7	7	3	2	-	-	Russia	2	6	3	1	3	4	3	3
Coral Sea Isle Terr.	-	-	-	1	1	1	-	-	Rwanda	1	1	-	-	1	1	1	1
Costa Rica	2	2	3	3	4	4	5	5	Saudi Arabia	1	-	-	-	1	2	1	1
Croatia	-	-	-	1	1	-	-	-	Senegal	-	-	-	1	1	1	-	-
Cyprus	-	-	-	-	-	1	-	-	Serbia	-	-	-	-	-	-	1	1
Czech Republic	2	3	3	3	-	1	-	-	Singapore	3	1	2	2	2	3	4	4
Dominican Republic	-	-	-	-	-	-	1	1	Slovakia	1	1	1	1	-	-	1	1
Ecuador	-	-	-	1	-	-	2	2	Slovenia	-	-	-	1	2	2	2	2
El Salvador	-	1	1	-	-	-	-	-	Somalia	-	-	-	-	1	1	1	1
Eritrea	-	1	1	-	-	-	-	-	South Africa	1	2	3	3	2	1	2	2
Estonia	1	-	1	-	-	-	-	-	Soviet Union	-	-	-	1	2	2	1	1
Ethiopia	-	1	-	-	1	1	1	1	Spain	5	4	3	2	2	1	1	1
Finland	1	1	2	1	1	-	-	-	Sri Lanka	2	2	5	4	5	5	6	6
France	6	6	4	4	3	6	3	3	Sudan	1	1	-	-	-	-	-	-
Germany	4	-	4	3	3	6	10	10	Sweden	4	4	3	5	7	5	8	8
Ghana	2	1	1	-	-	2	3	3	Switzerland	-	1	4	4	3	2	1	1
Greece	2	-	-	-	-	-	-	-	Taiwan	16	18	31	29	39	42	41	41
Guatemala	2	1	-	-	-	1	2	2	Thailand	6	7	8	5	8	5	6	6
Honduras	4	6	7	4	2	2	1	1	Togo	-	1	1	1	1	-	-	-
Hungary	-	-	2	3	3	6	6	6	Trinidad/Tobago	2	1	1	-	-	1	3	3
Iceland	-	-	-	2	-	-	-	-	Turkey	1	-	-	-	2	-	-	-
India	15	20	17	21	24	29	32	32	Uganda	1	1	-	-	-	-	1	1
Indonesia	4	10	9	11	11	9	6	6	Ukraine	2	2	1	-	1	2	5	5
Ireland	-	1	-	-	1	-	-	-	United Arab Emirates	2	1	-	1	1	2	2	2
Italy	2	1	1	-	1	1	1	1	United Arab Republic	-	-	-	-	-	-	1	1
Jamaica	1	-	1	2	3	3	2	2	United Kingdom	8	11	7	9	6	5	4	4
Japan	16	14	11	12	17	17	16	16	Uzbekistan	3	2	-	-	-	-	-	-
Jordan	2	-	-	1	-	-	-	-	Venezuela	5	3	4	1	4	7	10	10
Kazakhstan	-	2	2	-	-	-	-	-	Vietnam	-	-	-	-	-	-	2	2
Kenya	4	4	3	2	3	4	6	6	Yugoslavia	-	1	1	-	-	-	-	-
Korea, Rep. of	14	18	33	21	20	23	32	32	Zambia	1	1	1	-	-	-	-	-
Kuwait	-	-	-	-	-	-	1	1	Zimbabwe	2	1	1	-	-	1	2	2
Latvia	-	-	-	-	-	-	-	1									
Lebanon	1	1	-	-	-	1	2	2	Total	291	311	332	312	339	362	403	403

*Beginning Fall 1997, Hong Kong counted in China.

Percentage of Nonresident Aliens, Fall 1995 - Fall 2001



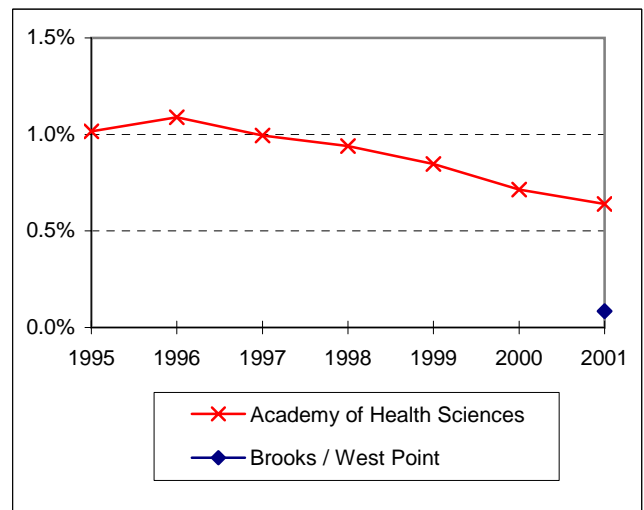
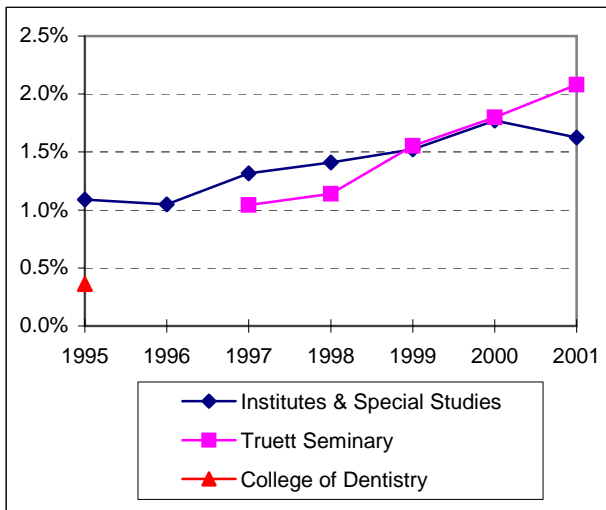
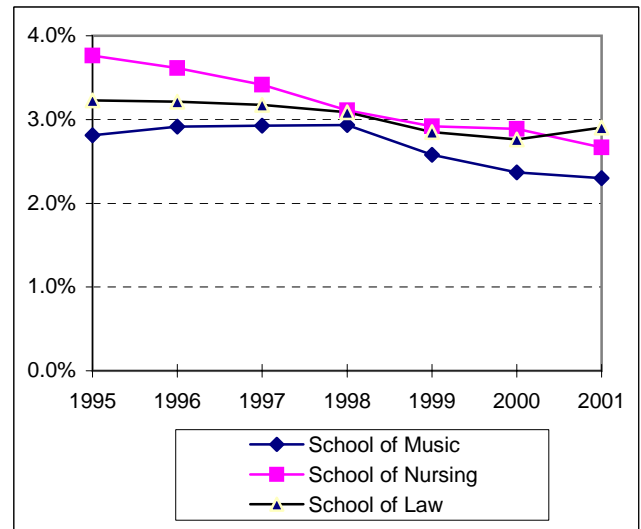
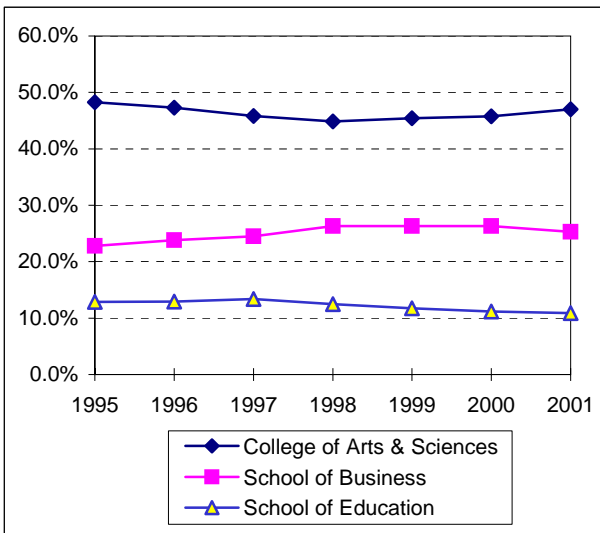
**Enrollment by Unit
Fall 1995 - Fall 2001**

	Fall	1995	1996	1997	1998	1999	2000	2001
College of Arts & Sciences		5,891	5,862	5,718	5,823	6,056	6,281	6,684
School of Business		2,785	2,950	3,059	3,421	3,508	3,609	3,598
School of Education		1,574	1,604	1,672	1,619	1,568	1,534	1,546
School of Engineering & Computer Sci.		315	348	370	460	542	593	633
School of Music		343	361	365	381	344	325	327
School of Nursing		459	448	426	404	389	396	379
Institutes & Special Studies		133	130	164	183	203	243	231
Graduate School		64	32	48	25	24	14	11
School of Law		394	398	396	401	380	379	413
Truett Seminary		76	123	130	148	207	247	296
College of Dentistry		44	-	-	-	-	-	-
Academy of Health Sciences		124	135	124	122	113	98	91
Brooks / West Point		-	-	-	-	-	-	12
TOTAL		12,202	12,391	12,472	12,987	13,334	13,719	14,221

Notes:

1. The School of Engineering & Computer Science was formed in 1995.
2. Beginning in 1995, the enrollment for the Graduate School reflects students classified as "No Major."
3. Programs housed in the College of Dentistry were transferred to Texas A&M University in Fall 1996.
4. A new doctoral program in Physical Therapy was added in 2001. This program is administered through the Brooks and West Point academies.

**Enrollment Percentage by Unit
Fall 1995 - Fall 2001**



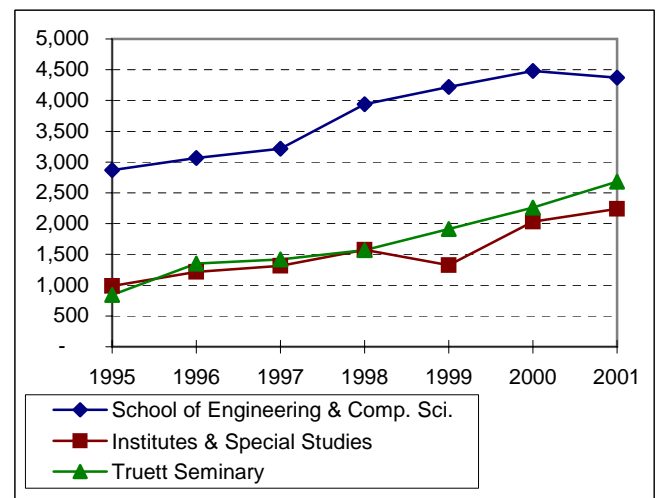
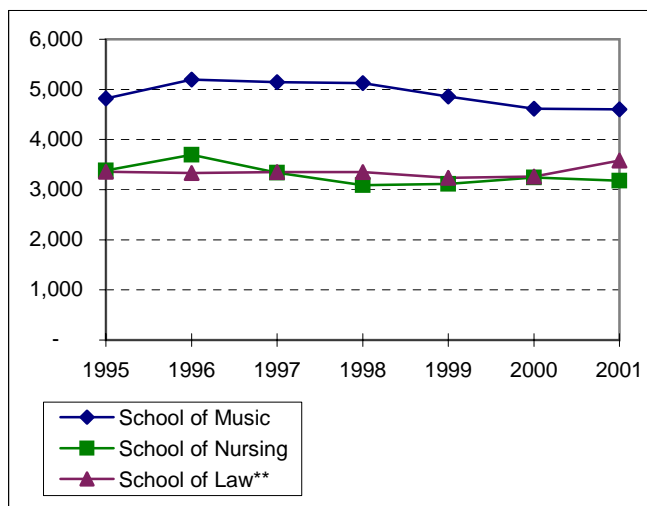
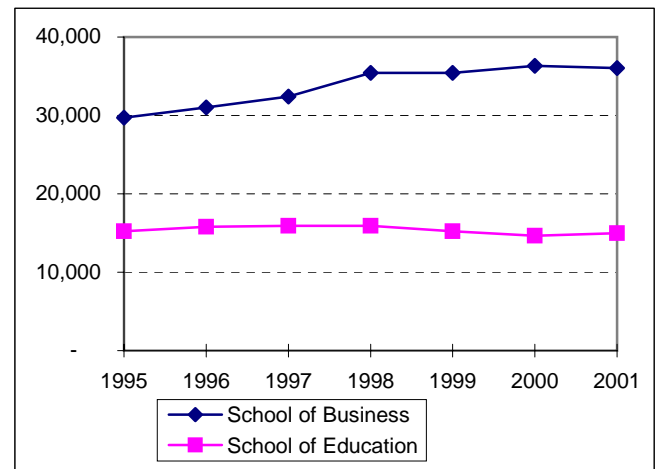
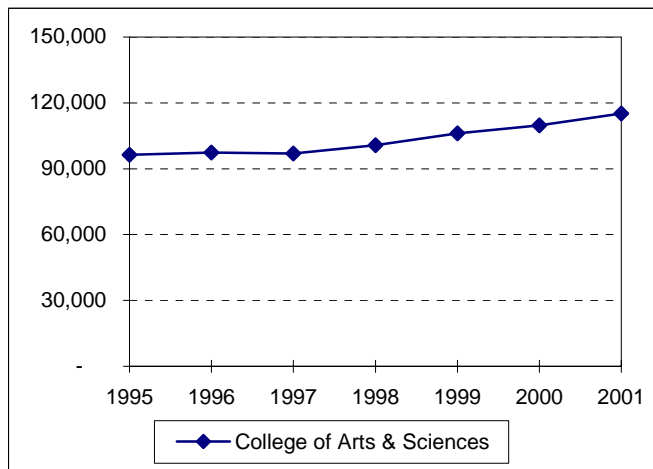
	Fall	1995	1996	1997	1998	1999	2000	2001
College of Arts & Sciences		48.3%	47.3%	45.8%	44.8%	45.4%	45.8%	47.0%
School of Business		22.8%	23.8%	24.5%	26.3%	26.3%	26.3%	25.3%
School of Education		12.9%	12.9%	13.4%	12.5%	11.8%	11.2%	10.9%
School of Engineering & Computer Sci.					3.5%	4.1%	4.3%	4.5%
School of Music		2.8%	2.9%	2.9%	2.9%	2.6%	2.4%	2.3%
School of Nursing		3.8%	3.6%	3.4%	3.1%	2.9%	2.9%	2.7%
Institutes & Special Studies		1.1%	1.0%	1.3%	1.4%	1.5%	1.8%	1.6%
Graduate School					0.2%	0.2%	0.1%	0.1%
School of Law		3.2%	3.2%	3.2%	3.1%	2.8%	2.8%	2.9%
Truett Seminary				1.0%	1.1%	1.6%	1.8%	2.1%
College of Dentistry		0.4%						
Academy of Health Sciences		1.0%	1.1%	1.0%	0.9%	0.8%	0.7%	0.6%
Brooks / West Point								0.1%

See Notes, page 14.

Source: IMTS.

**Student Credit Hours by Unit*
(Excluding Health Sciences)
Fall 1995 - Fall 2001**

Fall	1995	1996	1997	1998	1999	2000	2001
College of Arts & Sciences	96,348	97,393	97,007	100,794	106,150	109,742	115,178
School of Business	29,697	31,037	32,418	35,429	35,429	36,307	36,057
School of Education	15,243	15,793	15,934	15,930	15,225	14,640	14,963
School of Engineering & Comp. Sci.	2,870	3,067	3,218	3,938	4,219	4,480	4,372
School of Music	4,818	5,197	5,147	5,123	4,856	4,617	4,605
School of Nursing	3,381	3,693	3,337	3,089	3,114	3,245	3,180
Institutes & Special Studies	989	1,217	1,316	1,576	1,324	2,033	2,240
School of Law**	3,356	3,330	3,353	3,353	3,238	3,260	3,580
Truett Seminary	841	1,351	1,420	1,568	1,912	2,260	2,683
TOTAL	157,543	162,078	163,150	170,800	175,467	180,583	186,858

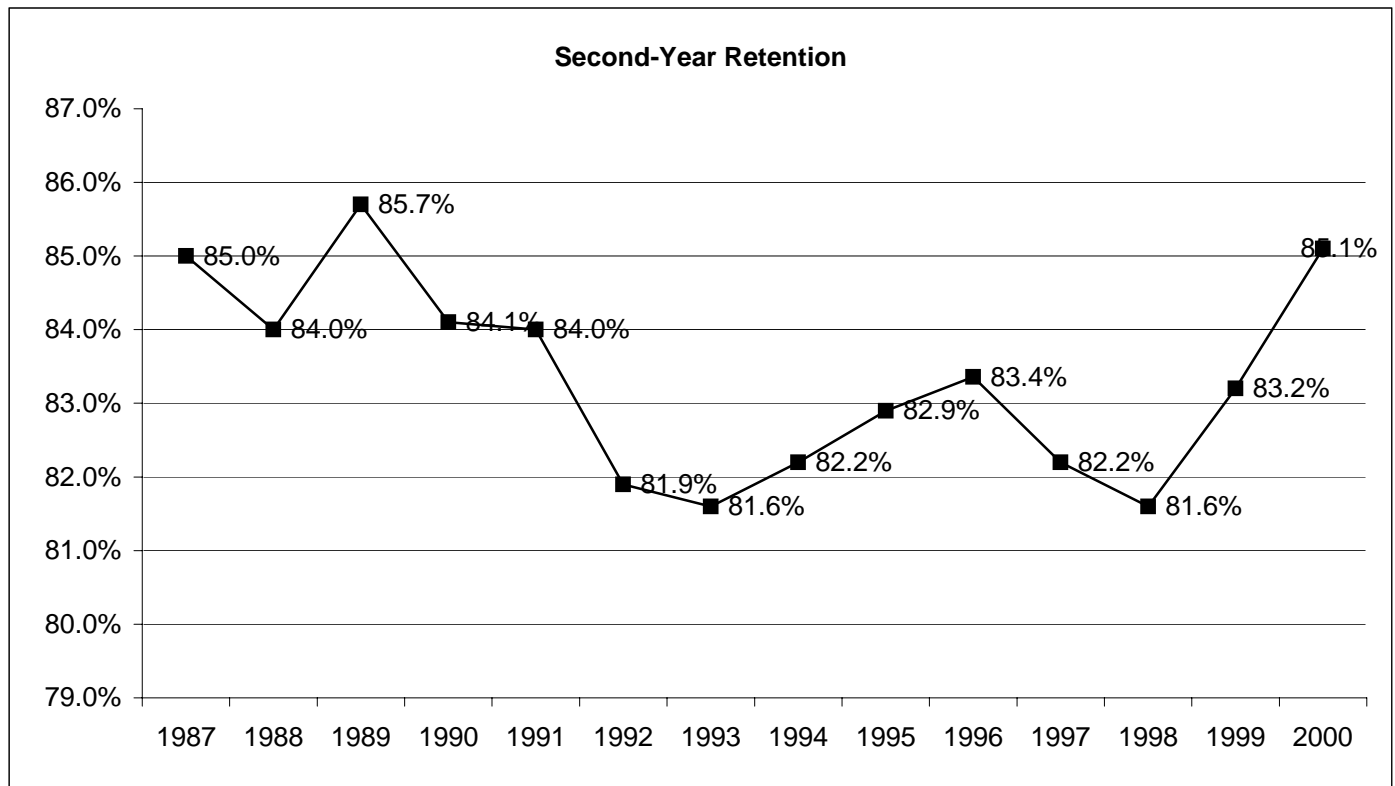


*BIC courses have been credited to the department of the instructor. See additional notes on page 14.

**Quarter hours converted to semester hours.

Retention of First-Time Freshman Classes Entering Fall 1987 - Fall 2000

First-Time Freshman Class of:	After 1 year		After 2 years		After 3 years			After 4 years			After 5 years			After 6 years		
	Cont.	Drop.	Cont.	Drop.	Cont.	Drop.	Grad.	Cont.	Drop.	Grad.	Cont.	Drop.	Grad.	Cont.	Drop.	Grad.
1987	85.0%	15.0%	75.6%	24.4%	71.7%	27.1%	1.2%	24.2%	28.2%	47.6%	3.4%	28.3%	68.3%	1.1%	28.2%	70.7%
1988	84.0%	16.0%	75.5%	24.5%	72.5%	26.5%	1.0%	29.8%	28.3%	41.9%	3.3%	28.5%	68.2%	0.8%	27.9%	71.3%
1989	85.7%	14.3%	74.8%	25.2%	71.2%	27.7%	1.1%	28.3%	28.9%	42.8%	3.9%	28.9%	67.2%	1.2%	28.8%	70.0%
1990	84.1%	15.9%	73.0%	27.0%	69.8%	29.0%	1.2%	28.1%	29.6%	42.3%	4.2%	31.2%	64.6%	1.6%	29.4%	69.0%
1991	84.0%	16.0%	74.5%	25.5%	70.7%	28.2%	1.1%	26.5%	29.6%	43.9%	3.8%	29.5%	66.7%	1.3%	29.0%	69.7%
1992	81.9%	18.1%	71.5%	28.5%	67.2%	31.5%	1.4%	28.4%	32.3%	39.3%	4.8%	32.0%	63.2%	0.9%	32.2%	66.9%
1993	81.6%	18.4%	72.0%	28.0%	68.4%	30.4%	1.2%	27.5%	32.3%	40.2%	4.5%	32.3%	63.2%	1.3%	31.8%	66.9%
1994	82.2%	17.8%	72.3%	27.7%	68.5%	30.1%	1.4%	27.0%	31.1%	41.9%	4.9%	31.9%	63.2%	1.5%	31.8%	66.7%
1995	82.9%	17.1%	76.0%	24.0%	71.4%	27.2%	1.4%	28.8%	28.3%	42.9%	4.4%	28.5%	67.1%	1.2%	28.0%	70.8%
1996	83.4%	16.6%	74.6%	25.4%	72.1%	27.0%	0.9%	29.4%	27.7%	42.9%	4.1%	27.5%	68.4%			
1997	82.2%	17.8%	73.2%	26.8%	70.1%	28.7%	1.2%	30.1%	29.8%	40.1%						
1998	81.6%	18.4%	74.8%	25.2%	70.8%	27.5%	1.8%									
1999	83.2%	16.8%	75.0%	25.0%												
2000	85.1%	14.9%														
Average	83.3%	16.7%	74.1%	25.9%	70.4%	28.4%	1.2%	28.0%	29.6%	42.3%	4.1%	29.9%	66.0%	1.2%	29.7%	69.1%



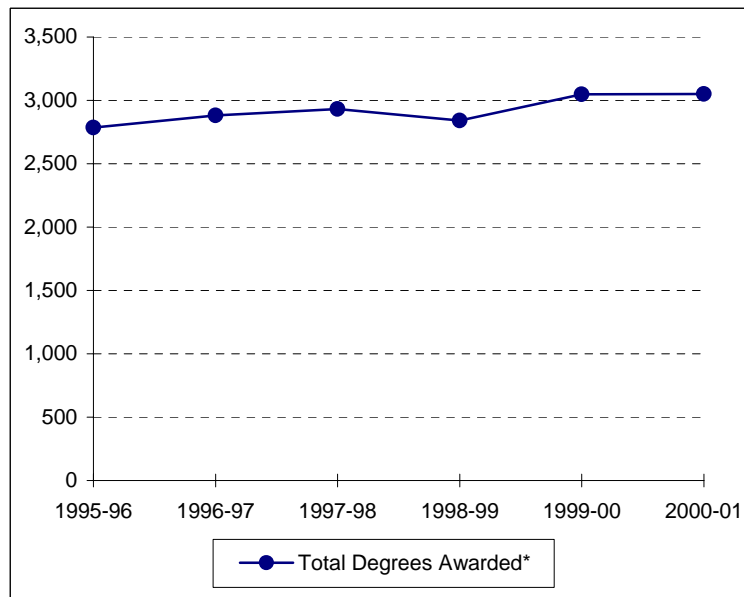
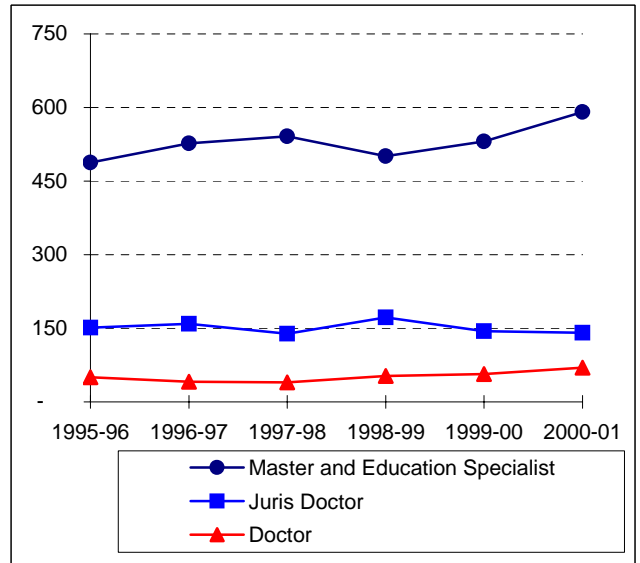
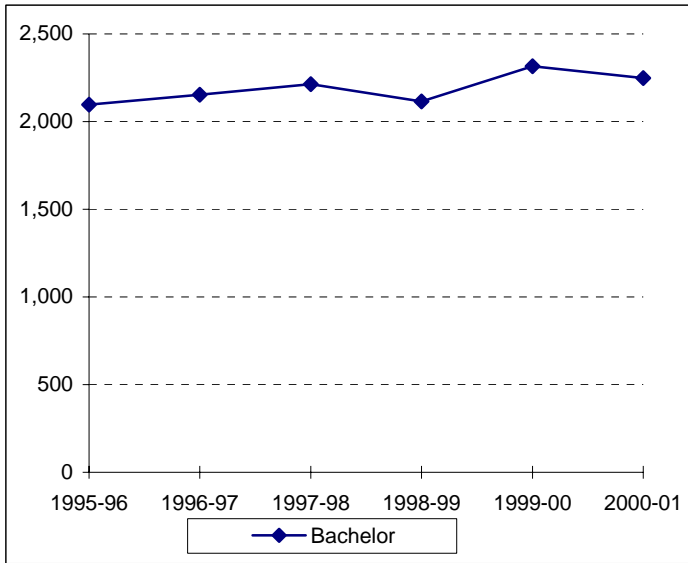
Distribution of Degrees (Duplicated Count*)
1995-96 through 2000-01

	1995-96	1996-97	1997-98	1998-99	1999-00	2000-01
Bachelor of Arts	1000	917	894	871	910	811
Bachelor of Business Administration	666	820	886	865	951	1002
Bachelor of Fine Arts	15	25	22	16	26	31
Bachelor of Music	19	21	32	26	24	22
Bachelor of Music Education	17	20	23	18	30	24
Bachelor of Science	110	141	145	131	135	142
Bachelor of Science in Aviation Sciences	8	3	8	5	5	8
Bachelor of Science in Bioinformatics						1
Bachelor of Science in Computer Science	17	15	20	21	38	24
Bachelor of Science in Education	335	361	364	355	415	350
Bachelor of Science in Engineering	31	23	21	24	24	28
Bachelor of Science in Family & Consumer Sciences	50	51	48	37	38	42
Bachelor of Science in Nursing	123	102	106	98	85	97
TOTAL BACHELOR DEGREES	2391	2499	2569	2467	2681	2582
Master of Accountancy				10	18	35
Master of Arts	86	82	81	62	61	58
Master of Business Administration	112	117	116	109	103	158
Master of Business Admin. in International Management	2	5	1	1	0	3
Master of Christian Theology		2	0			
Master of Clinical Gerontology	9	2	5	6	2	4
Master of Divinity		30	14	16	48	36
Master of Environmental Studies	1	6	4	5	2	1
Master of Fine Arts	2	1	1	2	3	2
Master of Health Administration	46	47	55	59	48	47
Master of International Journalism	2	1	2	1	0	0
Master of International Management	5	1	2	1	0	1
Master of Music	24	25	23	25	24	22
Master of Physical Therapy	24	23	24	18	22	19
Master of Public Policy and Administration	9	3	6	2	7	4
Master of Science	44	55	39	32	25	25
Master of Science in Clinical Psychology			21	7	12	11
Master of Science in Communication Sciences & Disorders	27	32	35	40	42	37
Master of Science in Dentistry	3					
Master of Science in Economics	0	6	2	7	5	5
Master of Science in Education	63	61	82	74	59	43
Master of Science in Gerontology	10	10	8	7	7	9
Master of Science in Information Systems				5	19	27
Master of Science in Limnology	0	0	3	1	0	1
Master of Science in Nursing	0	2	10	3	7	10
Master of Social Work						17
Master of Taxation	17	14	6	8	18	9
TOTAL MASTER'S DEGREES	486	525	540	501	532	584
TOTAL EDUCATION SPECIALIST DEGREES				1	0	7
TOTAL JURIS DOCTOR DEGREES	151	158	139	172	144	141
Doctor of Education	19	17	13	17	21	31
Doctor of Philosophy	21	14	20	26	25	31
Doctor of Psychology	10	10	7	10	11	8
TOTAL DOCTORAL DEGREES	50	41	40	53	57	70
TOTAL DEGREES AWARDED	3078	3223	3288	3194	3414	3384

*Degree information on this page is reported beginning with the Summer semester and including the following Fall and Spring terms. An individual graduate with multiple majors is counted as a whole graduate in each major area of study (i.e., duplicated count).

Source: "Statistics on Enrollment and Degrees Awarded", IMTS.

Summary of Degrees Awarded (Unduplicated Count*)
1995-96 through 2000-01



Degree Level:	1995-96	1996-97	1997-98	1998-99	1999-00	2000-01
Bachelor	2,097	2,154	2,213	2,115	2,315	2,249
Master and Education Specialist	488	527	541	501	531	591
Juris Doctor	151	159	139	172	144	141
Doctor	50	41	40	53	57	70
Total Degrees Awarded*	2,786	2,881	2,933	2,841	3,047	3,051

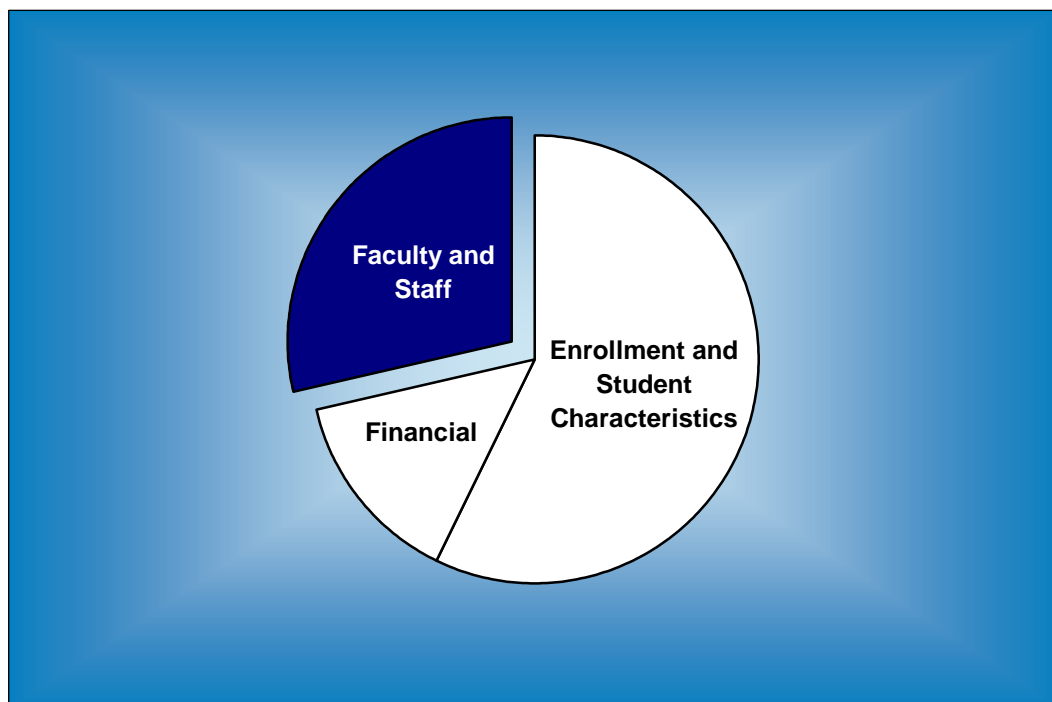
*The information on this page indicates the number of degree recipients (i.e., unduplicated count). Degree information for 1995-96 through 2000-01 is reported beginning with the Summer semester and including the following Fall and Spring terms.

**Degree Programs
(as of March 2002)**

Accounting (BBA)	Clinical Psychology (PsyD)	Family Nurse Practitioners (MSN)
Accounting (MAcc)	Communication Disorders (MA)	Fashion Design (BA)
Administrative Information Systems (BBA)	Communication Sci. & Disorders (BA)	Fashion Design (BSFCS)
Advanced Neonatal Nursing (MSN)	Communication Sci. & Disorders (MSCSD)	Fashion Merchandising (BA)
American Studies (BA)	Communication Specialist (BA)	Fashion Merchandising (BSFCS)
American Studies (MA)	Communication Studies (MA)	Finance (BBA)
Anthropology (BA)	Community Health (BSEd)	Financial Services / Planning (BBA)
Applied Mathematics (BS)	Composition (BM)	Forensic Science (BS)
Applied Music (BM)	Composition (MM)	Forestry (BA)
Applied Sociology (PhD)	Computer Information Systems (BBA)	Forestry (BS)
Archaeology (BA)	Computer Information Systems-CIS (BSEd)	French (BA)
Architecture (BA)	Computer Information Systems-ISY (BSEd)	French (BSEd)
Art (BFA)	Computer Science (BA)	General Family & Consumer Sci. (BA)
Art (BSEd)	Computer Science (BSCS)	General Family & Consumer Sci. (BSFCS)
Art History (BA)	Computer Science (MS)	General Studies in HHPR (BSEd)
Asian Studies (BA)	Conducting (MM)	Generic Special Education (BSEd)
Aviation Sciences (BSAvSc)	Curriculum & Instruction (EdD)	Geography (BA)
Basic Business (BBA)	Curriculum & Instruction (EdS)	Geology (BS)
Biblical & Related Languages (BA)	Curriculum & Instruction (MA)	Geology (MS)
Biochemistry (BA)	Curriculum & Instruction (MSEd)	Geology (PhD)
Biochemistry (BS)	Dentistry (BA)	Geophysics (BS)
Bioinformatics (BSI)	Dentistry (BS)	German (BA)
Biology (BA)	Design (BFA)	German (BSEd)
Biology (BS)	Directing (MFA)	Gerontology (MSG)
Biology (BSEd)	Earth Science (BA)	Greek (BA)
Biology (MA)	Earth Science (BSEd)	Health (BSEd)
Biology (MS)	Earth Science (MA)	Health Care Administration (MHA)
Biology (PhD)	Economics (BA)	Health / Fitness Studies (BSEd)
Biomedical Studies (MS)	Economics (BBA)	Health, Human Performance & Recreation (MSEd)
Biomedical Studies (PhD)	Economics (BS)	Health Science Studies (BSEd)
Business Administration (BA)	Economics (BSEd)	History (BA)
Business Administration (BSEd)	Economics (MSEco)	History (BSEd)
Business Administration (MBA)	Education (MA)	History (MA)
Business - Broadcasting (BBA)	Educational Administration (EdD)	Human Performance (BSEd)
Business - Journalism (BBA)	Educational Administration (EdS)	Human Resources Management (BBA)
Chemistry (BA)	Educational Administration (MSEd)	Information Systems Management (MBA)
Chemistry (BS)	Educational Psychology (EdS)	Information Systems (MSIS)
Chemistry (BSEd)	Educational Psychology (MA)	Instrumental Music (BME)
Chemistry (MS)	Educational Psychology (MSEd)	Interdisciplinary Studies (BSEd)
Chemistry (PhD)	Educational Psychology (PhD)	Interior Design (BA)
Child & Family Studies (BA)	Electrical & Computer Engineering (BSE)	Interior Design (BSFCS)
Child & Family Studies (BSFCS)	Engineering (BSE)	International Business (BBA)
Choral Music (BME)	English (BA)	International Economics (MA)
Church Music (BM)	English (BSEd)	International Economics (MS)
Church Music (MM)	English (MA)	International Journalism (MIJ)
Church Recreation (BSEd)	English (PhD)	International Management (MBA)
Church-State Studies (MA)	Entrepreneurship (BBA)	International Management (MBAIM)
Church-State Studies (PhD)	Environmental Biology (MS)	International Management (MIM)
Classics (BA)	Environmental Studies (BA)	International Relations (MA)
Clinical Gerontology (MCG)	Environmental Studies (BS)	International Studies (BA)
Clinical Laboratory Science (BS)	Environmental Studies (MES)	Journalism (BA)
Clinical Psychology (MSCP)	Environmental Studies (MS)	Journalism (BSEd)

Journalism (MA)	Physics (MA)
Language and Linguistics (BA)	Physics (MS)
Latin American Studies (BA)	Physics (PhD)
Latin (BA)	Piano Accompanying (MM)
Latin (BSEd)	Piano Pedagogy & Performance (MM)
Law (BA)	Political Science (BA)
Law (BBA)	Political Science (BSEd)
Law (JD)	Political Science (MA)
Life - Earth Science (BSEd)	Professional Writing (BA)
Limnology (MSL)	Psychology (BA)
Management (BBA)	Psychology (BS)
Marketing (BBA)	Public Administration (BBA)
Mathematics (BA)	Public Policy & Administration (MPPA)
Mathematics (BS)	Quantitative Business Analysis (BBA)
Mathematics (BSEd)	Reading (BSEd)
Mathematics (MS)	Real Estate (BBA)
Mathematics (PhD)	Recreation (BSEd)
Mechanical Engineering (BSE)	Regional / Urban Studies (BBA)
Medicine (BA)	Religion (BA)
Medicine (BS)	Religion (MA)
Ministry (DMin)	Religion (PhD)
Museum Studies (BA)	Risk Management and Insurance (BBA)
Museum Studies (BS)	Russian (BA)
Museum Studies (MA)	Science (BSEd)
Music (BA)	Slavic and East European Studies (BA)
Music Education (MM)	Social Studies (BSEd)
Music History & Literature (BM)	Social Work (BA)
Music History & Literature (MM)	Social Work (MSW)
Music Theory (MM)	Sociology (BA)
Neuroscience (BS)	Sociology (BSEd)
Neuroscience (MA)	Sociology (MA)
Neuroscience (PhD)	Spanish (BA)
Nursing Admin. & Management (MSN)	Spanish (BSEd)
Nursing (BSN)	Spanish (MA)
Nutrition Sciences (BA)	Speech Communication (BA)
Nutrition Sciences (BS)	Speech Communications (BSEd)
Nutrition Sciences (BSFCS)	Speech & Language Therapy (BSEd)
Operations Management (BBA)	Statistics (MA)
Optometry (BA)	Statistics (PhD)
Optometry (BS)	Studio Art (BA)
Pedagogy (BM)	Studio Art (BFA)
Performance (BFA)	Taxation (MT)
Performance (MM)	Telecommunication (BA)
Philosophy (BA)	Theater Arts (BA)
Philosophy (MA)	Theater Arts (BSEd)
Physical Science (BSEd)	Theater Arts (MA)
Physical Therapy (DScPT)	Theology (MDiv)
Physical Therapy (MPT)	Theory (BM)
Physics (BA)	University Scholars (BA)
Physics (BS)	
Physics (BSEd)	

Faculty and Staff



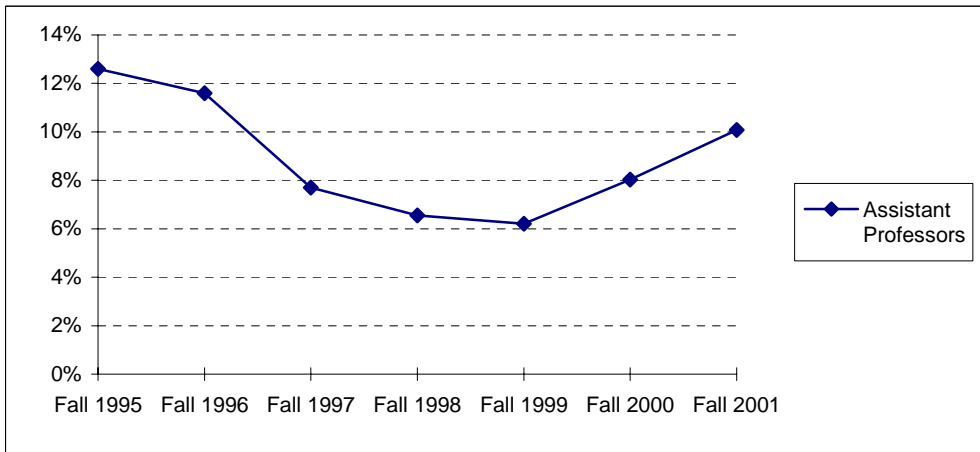
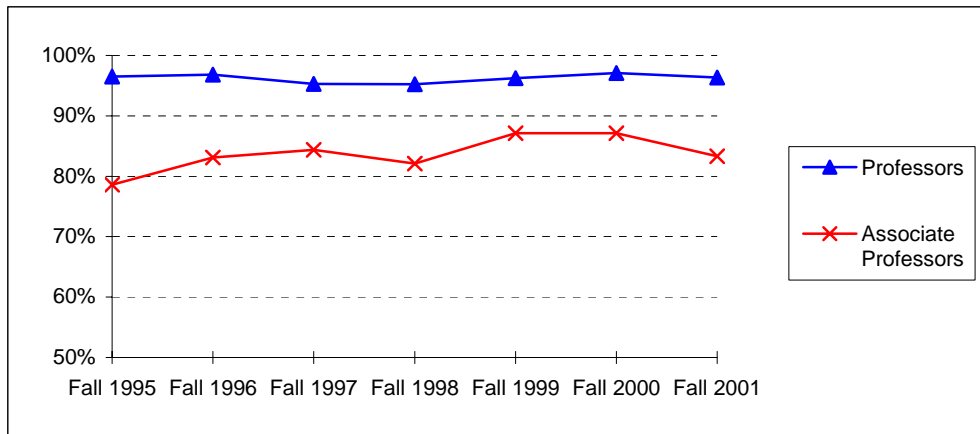
**Full-Time Faculty Positions
Fall 1995 - Fall 2001**

Rank	Fall 1995		Fall 1996		Fall 1997		Fall 1998		Fall 1999		Fall 2000		Fall 2001	
	Male	Female	Male	Female	Male	Female	Male	Female	Male	Female	Male	Female	Male	Female
Professors:														
Number	199	33	198	33	201	34	205	35	203	35	203	39	211	34
Tenured	190	31	190	30	194	32	198	35	195	34	197	38	202	34
Associate Prof.:														
Number	87	41	82	41	84	43	89	46	91	49	86	46	89	49
Tenured	76	32	67	34	68	37	78	38	79	43	74	41	71	44
Assistant Prof:														
Number	68	49	71	51	67	55	73	52	77	52	84	53	85	54
Tenured	2	7	3	5	3	7	2	7	2	6	5	6	6	8
Instructors:														
Number	0	2	0	2	0	2	0	1	0	1	0	3	0	3
Tenured	0	1	0	1	0	1	0	1	0	1	0	1	0	1
Lecturers:														
Number	45	76	55	73	47	73	50	78	51	91	53	95	63	109
Total Number	399	201	406	200	399	207	417	212	422	228	426	236	448	249
Total Tenured	268	71	260	70	265	77	278	81	276	84	276	86	279	87

**Highest Degree Earned by Full-Time Faculty
Fall 1995 - Fall 2001**

	Fall 1995	Fall 1996	Fall 1997	Fall 1998	Fall 1999	Fall 2000	Fall 2001
Bachelor's	0	0	1	1	0	0	1
Master's	141	135	138	145	150	159	165
Doctoral	438	449	448	463	478	480	507
Professional	21	22	19	20	22	23	24
Total	600	606	606	629	650	662	697

**Percentage of Full-Time Faculty with Tenure
Fall 1995 - Fall 2001**



	Fall 1995	Fall 1996	Fall 1997	Fall 1998	Fall 1999	Fall 2000	Fall 2001
Professors	96.5%	96.8%	95.3%	95.2%	96.2%	97.1%	96.3%
Associate Professors	78.6%	83.1%	84.4%	82.1%	87.1%	87.1%	83.3%
Assistant Professors	12.6%	11.6%	7.7%	6.6%	6.2%	8.0%	10.1%
Instructors	14.3%	33.3%	50.0%	50.0%	100.0%	33.3%	33.3%
All Faculty	55.7%	56.9%	56.5%	54.5%	55.4%	54.7%	52.5%

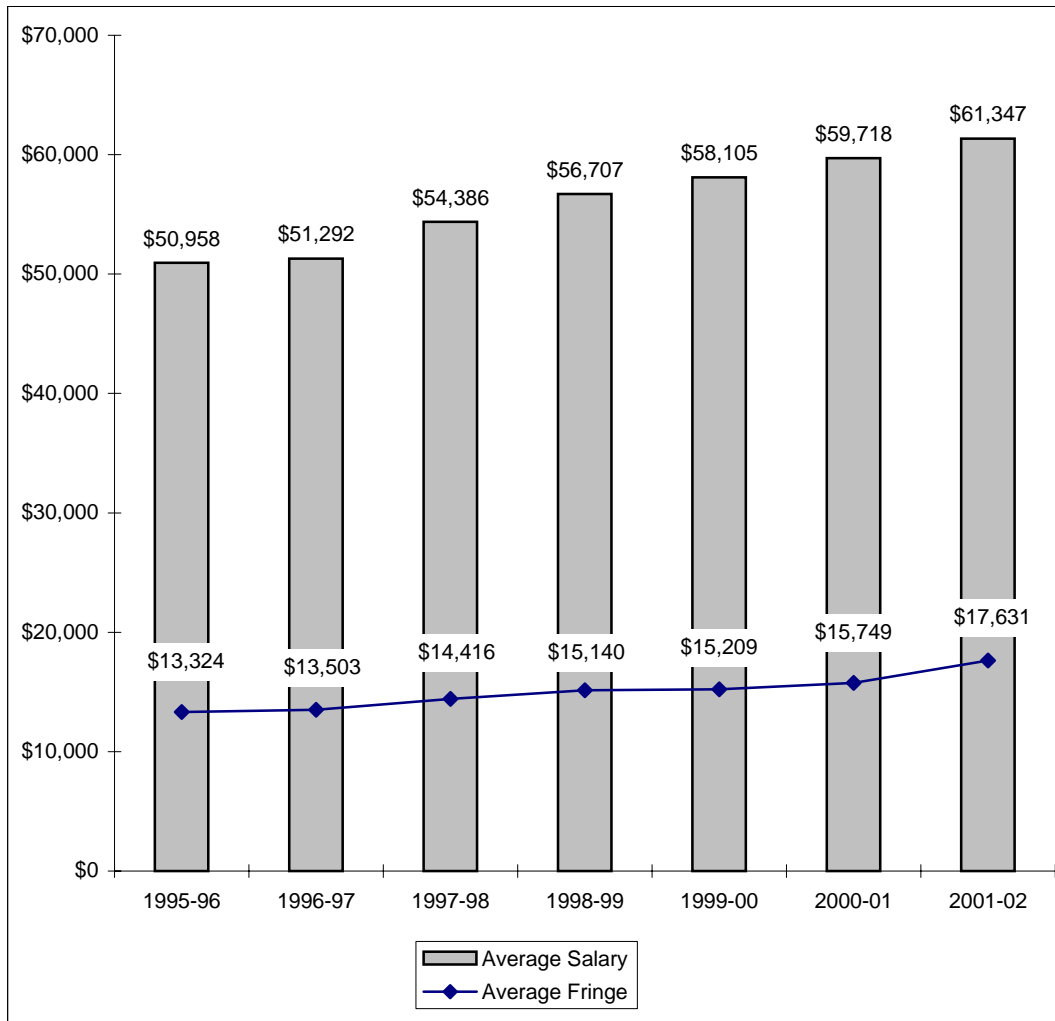
**Average Salaries of Full-Time Instructional Faculty
on Academic Year Contracts
Fall 1995 - Fall 2001**

Rank	Fall 1995		Fall 1996		Fall 1997		Fall 1998	
	Number in Rank	Average Salary	Number in Rank	Average Salary	Number in Rank	Average Salary	Number in Rank	Average Salary
Professor	232	\$65,450	231	\$67,094	235	\$70,565	240	\$73,937
Associate Professor	128	\$51,041	123	\$51,427	127	\$54,382	135	\$56,977
Assistant Professor	117	\$41,448	122	\$41,259	122	\$42,459	125	\$44,193
Instructor	2	*	2	*	2	*	1	*
Lecturer	121	\$32,504	128	\$32,473	120	\$35,127	128	\$36,420
All Ranks	600	\$50,958	606	\$51,292	606	\$54,386	629	\$56,707
Average Fringe		\$13,324		\$13,503		\$14,416		\$15,140
Fringe as a Percentage of Average Salary		26.1%		26.3%		26.5%		26.7%
Percentage Increase in Average Salary for Continuing Faculty		5.2%		3.3%		6.7%		4.6%

Rank	Fall 1999		Fall 2000		Fall 2001	
	Number in Rank	Average Salary	Number in Rank	Average Salary	Number in Rank	Average Salary
Professor	238	\$77,289	242	\$79,299	245	\$81,747
Associate Professor	140	\$58,365	132	\$60,511	138	\$62,697
Assistant Professor	129	\$45,423	137	\$47,530	139	\$50,046
Instructor	1	*	3	*	3	*
Senior Lecturer					64	\$45,227
Lecturer	142	\$37,309	148	\$38,525	108	\$37,884
All Ranks	650	\$58,105	662	\$59,718	697	\$61,347
Average Fringe		\$15,209		\$15,749		\$17,631
Fringe as a Percentage of Average Salary		26.2%		26.4%		28.7%
Percentage Increase in Average Salary for Continuing Faculty		4.3%		4.1%		5.0%

*Data not displayed for five or fewer faculty.

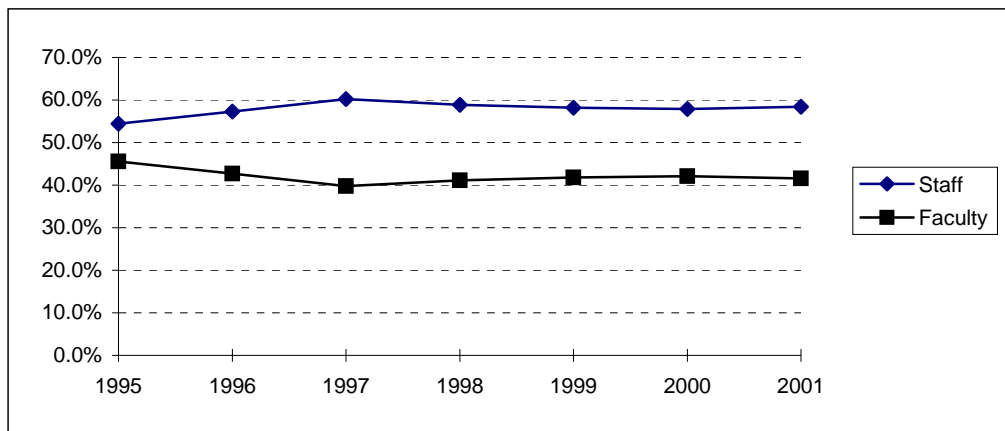
**Average Compensation of Full-Time Instructional Faculty
on Academic Year Contracts
1995-96 through 2001-02**



**Institutional Staff
Fall 1995 - Fall 2001**

Fall	1995	1996	1997	1998	1999	2000	2001
Faculty:							
Full-Time	600	606	596	619	641	655	688
Part-Time	79	58	49	86	114	133	116
Chief Administrators	14	14	16	15	17	16	17
Other Administrators:							
Full-Time	60	60	90	95	97	100	120
Part-Time			1				
Professional (Non-Academic):							
Full-Time	18	18	42	38	39	41	46
Part-Time	2	3	0	0	0	0	0
Salaried Staff:							
Full-Time	371	424	440	455	453	491	530
Part-Time	15	18	22	21	21	12	9
Hourly Staff:							
Full-Time	275	288	292	310	349	353	349
Part-Time	56	66	74	74	74	72	59
Total	1490	1555	1622	1713	1805	1873	1934

**Percentage of Institutional Staff
Fall 1995 - Fall 2001**



Fall	1995	1996	1997	1998	1999	2000	2001
Staff	54.4%	57.3%	60.2%	58.8%	58.2%	57.9%	58.4%
Faculty	45.6%	42.7%	39.8%	41.2%	41.8%	42.1%	41.6%

**Full-Time Faculty* by Religious Affiliation
Fall 1995 - Fall 2001**

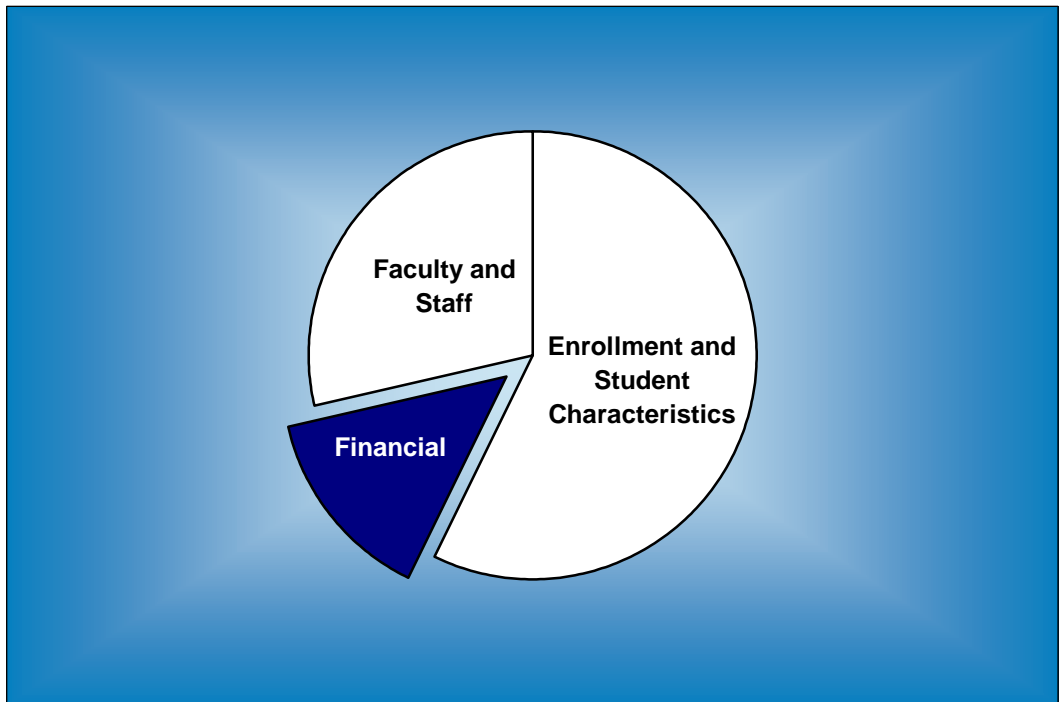
Fall	1995	1996	1997	1998	1999	2000	2001
Assembly of God	1	1	1	1	1	1	1
Baptist	306	302	294	307	315	315	331
Catholic	44	47	46	51	45	51	48
Church of Christ	13	12	16	16	15	16	16
Disciples of Christ	16	16	16	16	13	11	13
Episcopalian	38	40	45	47	49	45	47
Lutheran	36	38	34	35	38	38	40
Methodist	68	71	71	73	70	71	78
Non-Denominational	10	9	10	11	11	16	16
Presbyterian	39	40	40	39	36	41	46
Other / Unspecified	29	30	33	33	57	57	61
Total	600	606	606	629	650	662	697

*AAUP definition.

**Full-Time Staff by Religious Affiliation
Fall 1995 - Fall 2001**

Fall	1995	1996	1997	1998	1999	2000	2001
Assembly of God	4	4	6	5	4	6	7
Baptist	448	475	507	493	484	507	569
Catholic	63	63	73	76	84	86	100
Church of Christ	24	24	25	26	30	32	35
Disciples of Christ	19	21	19	17	20	17	18
Episcopalian	20	15	17	17	17	15	17
Lutheran	29	29	30	27	33	37	40
Methodist	80	80	83	90	96	99	109
Non-Denominational	9	9	13	13	20	24	20
Presbyterian	11	12	13	17	17	21	25
Other / Unspecified	49	56	57	96	115	123	85
Total	756	788	843	877	920	967	1025

Financial



**Tuition and Other Semester Charges
1995-96 through 2001-02**

	1995-96	1996-97	1997-98	1998-99	1999-00	2000-01	2001-02
Tuition per Semester Hour	\$258.00	\$269.00	\$288.00	\$308.00	\$329.00	\$355.00	\$379.00
Increase from Prior Year	11.2%	4.3%	7.1%	6.9%	6.8%	7.9%	6.8%
Application Fee	25.00	25.00	25.00	35.00	35.00	35.00	35.00
Applied Music Fee(1)	75.00	85.00	90.00	96.00	105.00	110.00	117.00
Change-of-Course Fee	20.00	20.00	20.00	20.00	20.00	20.00	20.00
Chapel-Forum Fee	10.00	10.00	10.00	15.00	15.00	25.00	25.00
Credit by Baylor Exam Fee	129.00	134.50	144.00	154.00	164.50	177.50	189.50
General Student Fee	320.00	335.00	385.00	427.00	490.00	524.00	590.00
Enrollment Deposit (2)	100.00	100.00	100.00	100.00	100.00	100.00	100.00
Lab/Course Fees (3)	25.00	25.00	25.00	25.00	25.00	25.00	25.00
Late Registration Fee (4)	20.00	20.00	20.00	20.00	20.00	20.00	20.00
Student Life Fee	1.00	1.00	1.00	1.00	1.00	1.00	1.00
Technology Fee				85.00	90.00	95.00	101.00
Vehicle Registration Fee (5)	70.00	90.00	95.00	120.00	145.00	170.00	175.00
Room	895.00	922.00	950.00	979.00	1,050.00	1,124.00	1,295.00
Increase from Prior Year	2.9%	3.0%	3.0%	3.1%	7.3%	7.0%	15.2%
Board (6)	1,085.00	1,113.00	1,170.00	1,205.00	1,240.00	1,278.00	1,349.00
Increase from Prior Year	2.4%	2.6%	5.1%	3.0%	2.9%	3.1%	5.6%

Increase in Semester Charges from 1995-96 to 2001-02:

Tuition per hour	46.9%
Room	44.7%
Board	24.3%

Notes:

(1) Supplemental charge per semester for one 30-minute lesson per week.

(2) In 1998, the General University Deposit became an Enrollment Deposit. The Enrollment Deposit is paid to assure enrollment place and is applied on the student's first semester bill.

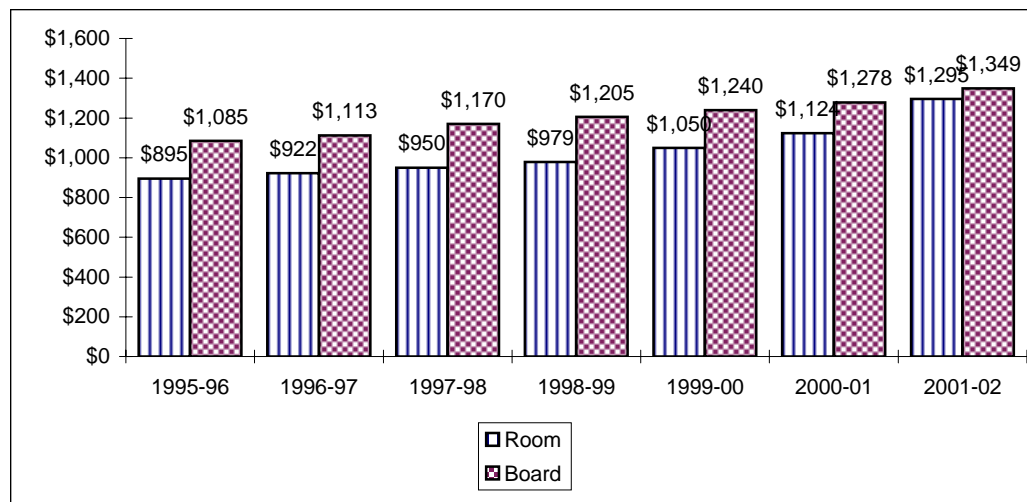
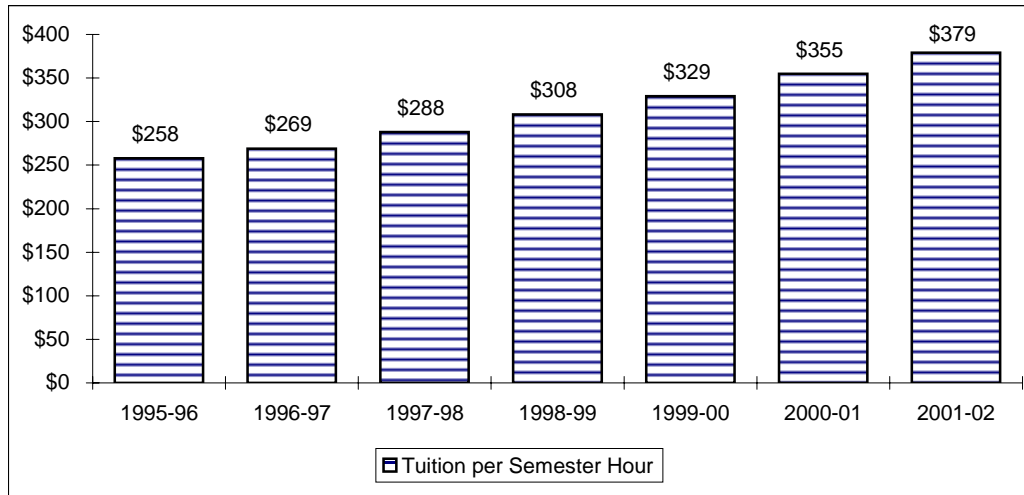
(3) Minimum lab fee is \$25; some courses may be higher.

(4) Fee is graduated: \$20.00 first through third class days, \$30.00 fourth through ninth class days, \$50.00 tenth class day and after.

(5) Annual automobile fee (September - August).

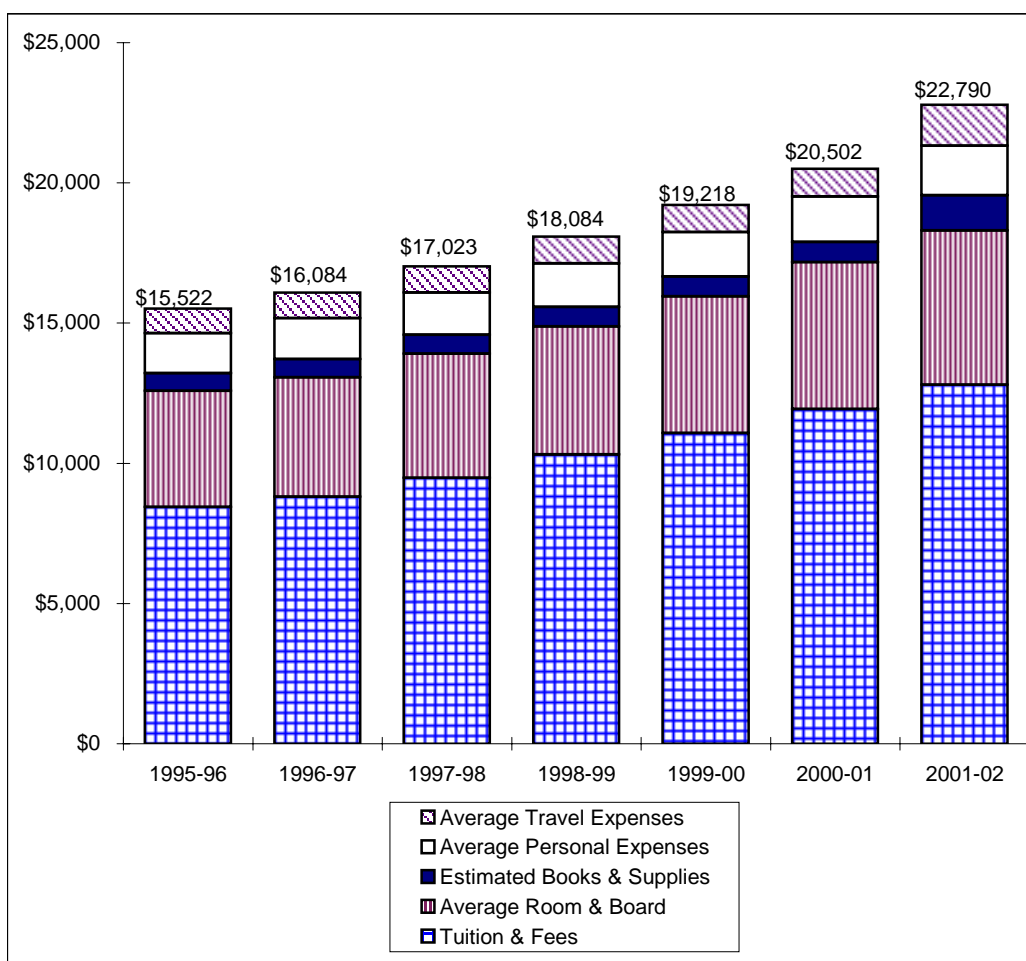
(6) For 1995-96 through 2000-2001, Board rate reflects the twenty meal plan, per semester, not including sales tax. For 2001-02, Board rate reflects the "Classic - 16 Plus Meal Plan" which includes \$100 BearBucks, but does not include tax.

Tuition, Room and Board Charges 1995-96 through 2001-02



Annual Undergraduate Student Cost Profile 1995-96 through 2001-02

	1995-96	1996-97	1997-98	1998-99	1999-00	2000-01	2001-02
Tuition & Fees	\$8,444	\$8,806	\$9,478	\$10,316	\$11,082	\$11,940	\$12,804
Average Room & Board	4,140	4,254	4,433	4,566	4,874	5,238	5,494
Estimated Books & Supplies	634	652	670	690	702	716	1,256
Average Personal Expenses	1,426	1,468	1,512	1,556	1,586	1,616	1,772
Average Travel Expenses	878	904	930	956	974	992	1,464
Average Total Cost	\$15,522	\$16,084	\$17,023	\$18,084	\$19,218	\$20,502	\$22,790
Increase from Prior Year	6.9%	3.6%	5.8%	6.2%	6.3%	6.7%	11.2%



**Operating Funds
1995-96 through 2000-01**

Sources of Revenues

	1995-96	1996-97	1997-98	1998-99	1999-00	2000-01
Tuition & Fees	\$95,631,950	\$101,979,942	\$111,333,824	\$131,549,785	\$145,105,566	\$161,790,383
Gifts & Private Grants	3,674,822	4,609,984	6,248,707	8,244,782	6,926,099	10,081,101
Baptist General Convention of Texas Appropriation	3,686,271	3,928,739	4,039,046	3,994,879	4,078,147	4,022,186
Endowment Income	10,454,210	11,159,003	12,098,349	12,111,256	12,678,477	15,075,011
Investment Income	1,792,538	1,930,310	2,212,007	2,364,681	2,826,020	3,772,096
Other Sources	9,526,460	9,199,834	10,292,257	9,599,477	13,710,214	11,459,110
Auxiliary Enterprises	25,912,697	29,497,606	32,582,644	35,561,127	36,679,685	39,285,440
Total Revenues	\$150,678,948	\$162,305,418	\$178,806,834	\$203,425,987	\$222,004,208	\$245,485,327

Sources of Revenues as a Percentage of Total Revenues

	1995-96	1996-97	1997-98	1998-99	1999-00	2000-01
Tuition & Fees	63.5%	62.8%	62.2%	64.6%	65.5%	66.0%
Gifts & Private Grants	2.4%	2.8%	3.5%	4.1%	3.1%	4.1%
Baptist General Convention of Texas Appropriation	2.4%	2.4%	2.3%	2.0%	1.8%	1.6%
Endowment Income	7.0%	6.9%	6.8%	6.0%	5.7%	6.1%
Investment Income	1.2%	1.2%	1.2%	1.2%	1.3%	1.5%
Other Sources	6.3%	5.7%	5.8%	4.7%	6.2%	4.7%
Auxiliary Enterprises	17.2%	18.2%	18.2%	17.4%	16.4%	16.0%
Total Revenues	100.0%	100.0%	100.0%	100.0%	100.0%	100.0%

**Operating Funds (Continued)
1995-96 through 2000-01**

Expenditures by Function

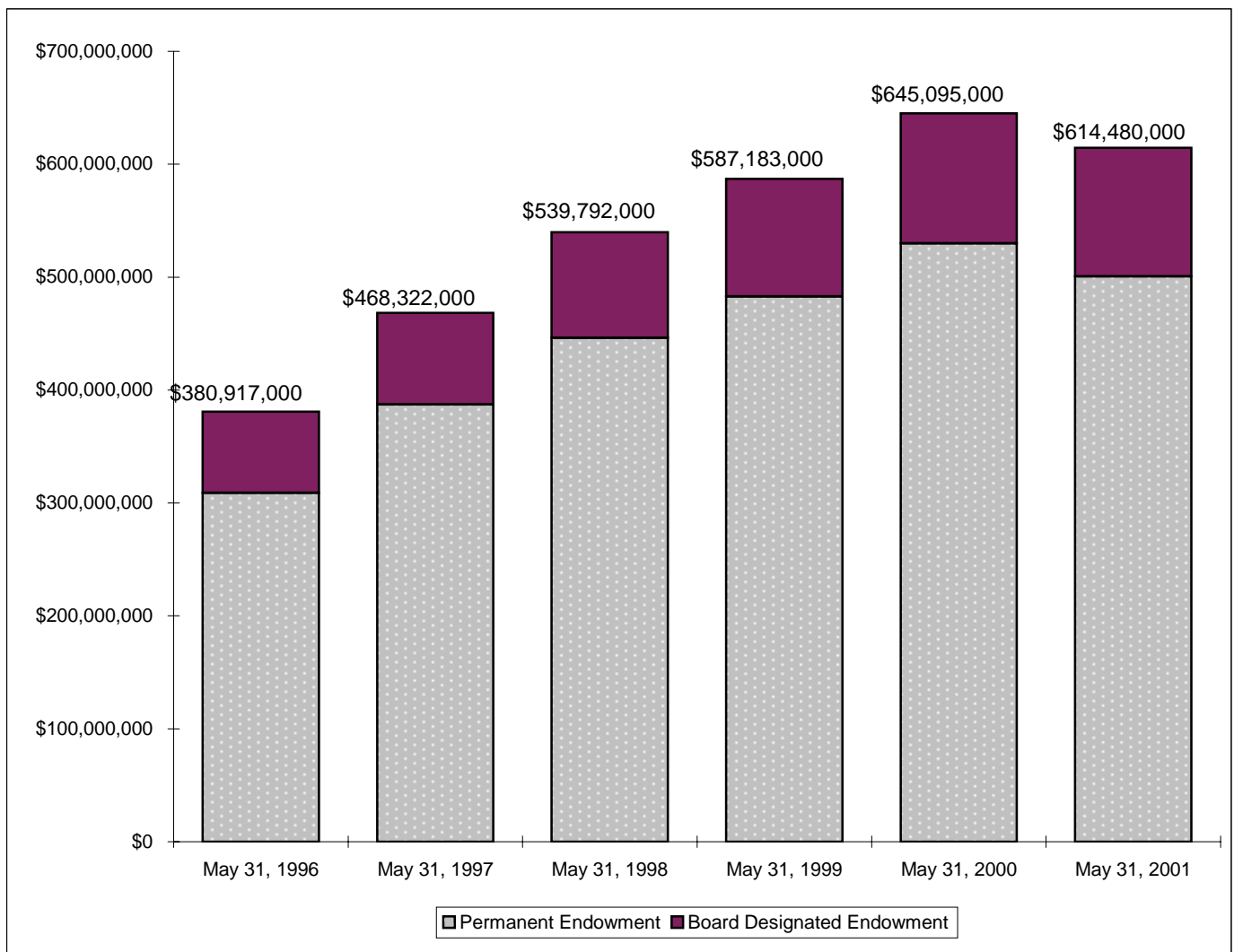
	1995-96	1996-97	1997-98	1998-99	1999-00	2000-01
Instruction	\$63,714,510	\$64,887,596	\$69,394,793	\$73,484,863	\$78,132,224	\$82,621,971
Acad Support, Resrch & Pub Service	12,432,041	13,226,633	13,945,393	16,847,590	18,662,339	20,363,667
Student Services	10,129,853	10,569,350	9,473,902	9,152,085	11,165,359	11,798,452
Plant Operations & Maintenance	9,762,895	10,138,633	10,429,262	11,889,750	14,220,616	16,020,525
Institutional Support	14,519,229	17,944,285	18,169,021	23,709,606	26,511,017	28,859,740
Scholarships & Fellowships	10,275,992	11,606,819	12,954,165	15,630,383	18,955,785	21,932,892
Auxiliary Enterprises	24,031,521	26,926,149	30,842,634	35,375,307	37,884,043	42,264,498
Discretionary Transfers	5,795,124	6,984,749	13,572,228	17,318,040	16,453,711	21,600,154
Total Expenditures	150,661,165	162,284,214	178,781,398	203,407,624	221,985,094	245,461,899
Excess Revenues	\$17,783	\$21,204	\$25,436	\$18,363	\$19,114	\$23,428

**Expenditures by Function as a
Percentage of Total Expenditures**

	1995-96	1996-97	1997-98	1998-99	1999-00	2000-01
Instruction	42.3%	40.0%	38.8%	36.1%	35.2%	33.7%
Acad Support, Resrch & Pub Service	8.3%	8.2%	7.8%	8.3%	8.4%	8.3%
Student Services	6.7%	6.5%	5.3%	4.5%	5.0%	4.8%
Plant Operations & Maintenance	6.5%	6.2%	5.8%	5.8%	6.4%	6.5%
Institutional Support	9.6%	11.1%	10.2%	11.7%	11.9%	11.8%
Scholarships & Fellowships	6.8%	7.2%	7.2%	7.7%	8.5%	8.9%
Auxiliary Enterprises	16.0%	16.6%	17.3%	17.4%	17.1%	17.2%
Discretionary Transfers	3.8%	4.3%	7.6%	8.5%	7.4%	8.8%
Total Expenditures	100.0%	100.0%	100.0%	100.0%	100.0%	100.0%

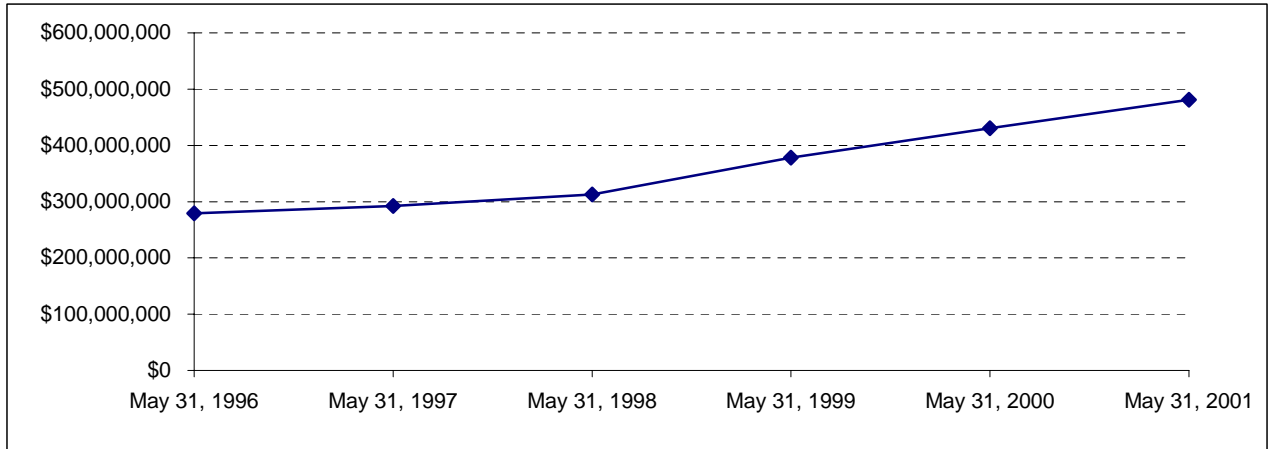
**Endowment Fund Balance - Market Value
May 31, 1996 through May 31, 2001**

	May 31, 1996	May 31, 1997	May 31, 1998	May 31, 1999	May 31, 2000	May 31, 2001
Permanent Endowment	\$308,914,000	\$387,211,000	\$446,150,000	\$482,807,000	\$529,979,000	\$500,739,000
Board Designated Endowment	72,003,000	81,111,000	93,642,000	104,376,000	115,116,000	113,741,000
Total Endowment	\$380,917,000	\$468,322,000	\$539,792,000	\$587,183,000	\$645,095,000	\$614,480,000
Permanent Endowment	81.1%	82.7%	82.7%	82.2%	82.2%	81.5%
Board Designated Endowment	18.9%	17.3%	17.3%	17.8%	17.8%	18.5%
Total Endowment	100.0%	100.0%	100.0%	100.0%	100.0%	100.0%



Property, Plant and Equipment*
May 31, 1996 through May 31, 2001

Property, Plant & Equipment	May 31, 1996	May 31, 1997	May 31, 1998	May 31, 1999	May 31, 2000	May 31, 2001
	\$278,960,000	\$292,070,000	\$312,970,000	\$378,059,000	\$430,619,000	\$480,878,000



*Does not reflect the impact of accumulated depreciation.

Assets
May 31, 1996 through May 31, 2001

	May 31, 1996	May 31, 1997	May 31, 1998	May 31, 1999	May 31, 2000	May 31, 2001
Net Assets	\$578,970,000	\$685,591,000	\$780,752,000	\$855,595,000	\$941,304,000	\$945,490,000
Total Assets	\$618,171,000	\$727,520,000	\$841,823,000	\$951,390,000	\$1,043,535,000	\$1,056,374,000

