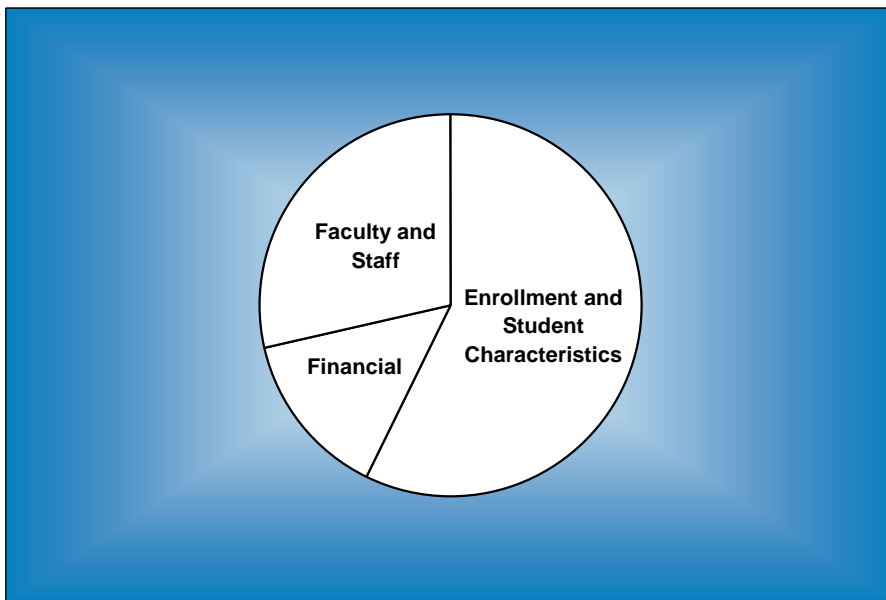


BAYLOR TRENDS



Fall 1996 - Fall 2002

Volume XIV

Prepared by the Office of Information Management and Testing Services, March 2003

<http://www.baylor.edu/IMTS/>

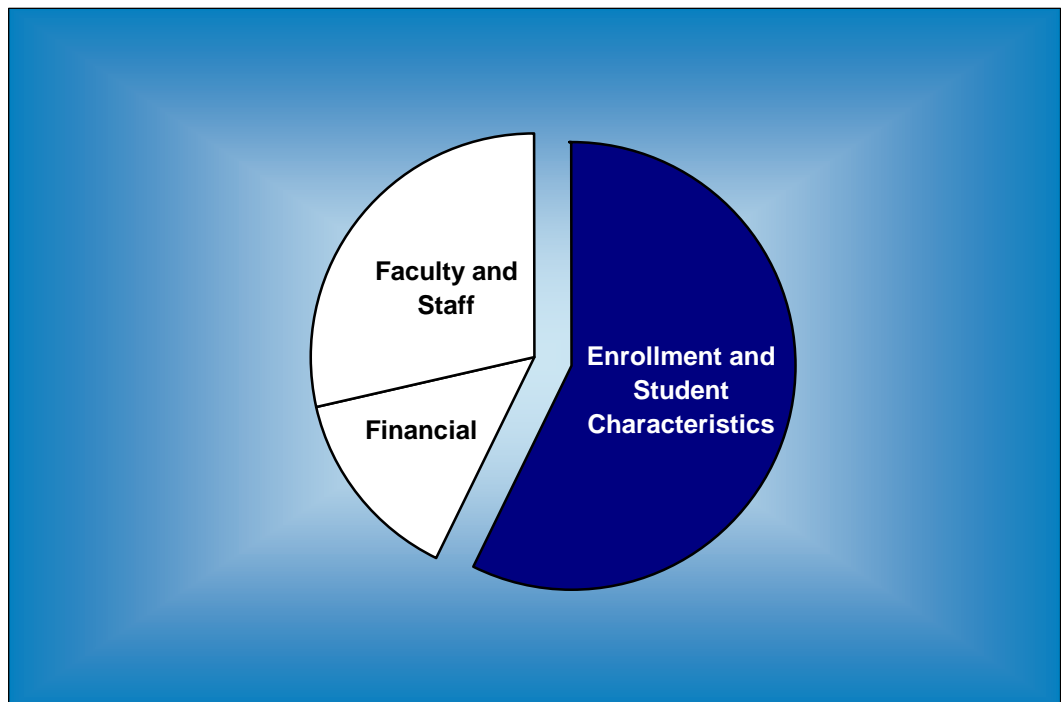
Table of Contents

	Page
ENROLLMENT AND STUDENT CHARACTERISTICS	
<i>New Freshman Applications and Enrollment</i>	1
<i>Transfer Applications and Enrollment</i>	1
<i>New Freshman Applications and Enrollment by Gender</i>	2
<i>New Freshman and Transfer Student Enrollment</i>	3
<i>Enrollment by Classification</i>	4
<i>Enrollment</i>	5
<i>Enrollment by Gender, Waco Campus</i>	6
<i>Enrollment by Religious Affiliation, Waco Campus</i>	7
<i>Baptist Percentage, Waco Campus</i>	7
<i>Enrollment by Racial/Ethnic Group</i>	8
<i>Racial/Ethnic Minority Percentage</i>	8
<i>Leading Texas Counties of Origin</i>	9
<i>Leading States of Origin</i>	9
<i>Percentage from Top Four Texas Counties</i>	10
<i>Percentage from Texas</i>	10
<i>Texas Enrollment by County</i>	11
<i>Enrollment by State</i>	12
<i>Countries Represented by Nonresident Aliens</i>	13
<i>Percentage of Nonresident Aliens</i>	13
<i>Enrollment by Unit</i>	14
<i>Enrollment Percentage by Unit</i>	15
<i>Student Credit Hours by Unit, Waco Campus</i>	16
<i>Retention of First-Time Freshman Classes</i>	17
<i>Distribution of Degrees</i>	18
<i>Summary of Degrees Awarded</i>	19
<i>Degree Programs</i>	20
FACULTY AND STAFF	
<i>Full-Time Faculty Positions</i>	22
<i>Highest Degree Earned by Full-Time Faculty</i>	22
<i>Percentage of Full-Time Faculty with Tenure</i>	23
<i>Average Salaries of Full-Time Instructional Faculty on Academic Year Contracts</i>	24
<i>Average Compensation of Full-Time Instructional Faculty on Academic Year Contracts</i>	25
<i>Institutional Staff</i>	26
<i>Percentage of Institutional Staff</i>	26
<i>Full-Time Faculty by Religious Affiliation</i>	27
<i>Full-Time Staff by Religious Affiliation</i>	27

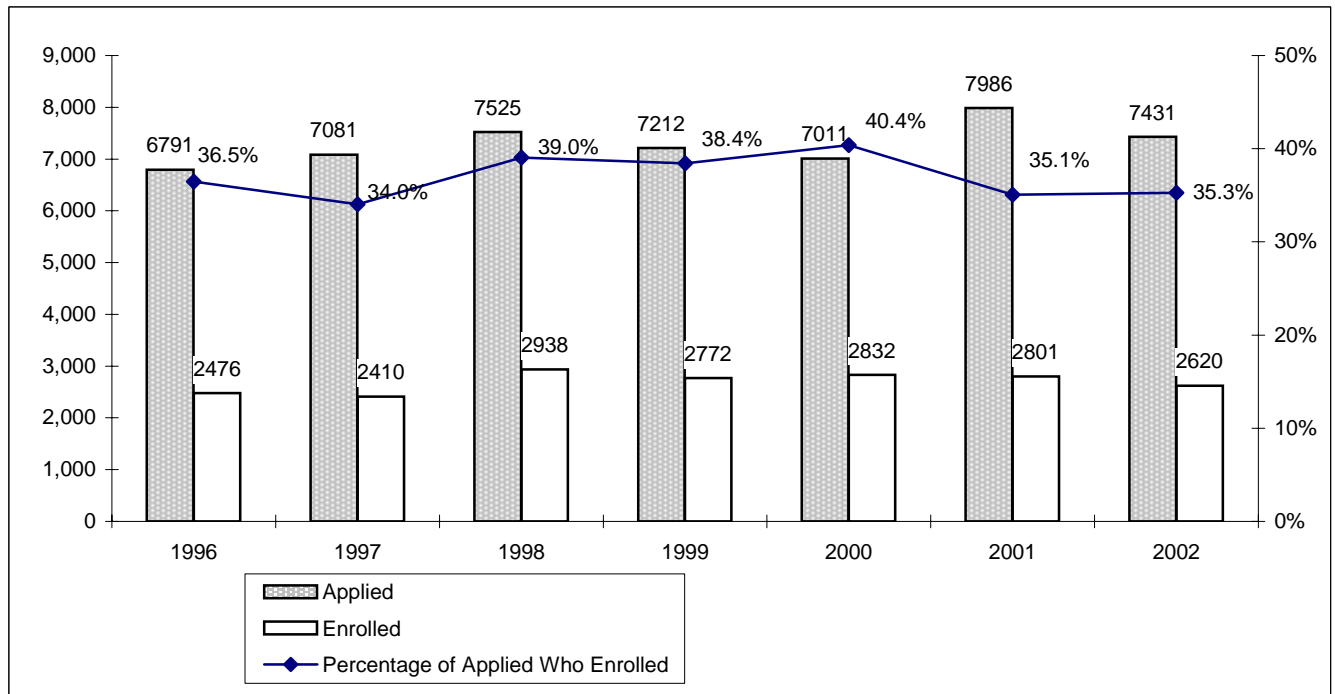
FINANCIAL

Undergraduate Tuition and Other Semester Charges28
Undergraduate Tuition, Room and Board Charges29
Annual Undergraduate Student Cost Profile30
Operating Funds:
 Sources of Revenues.....31
 Sources of Revenue as a Percentage of Total Revenues.....31
 Expenditures by Functions32
 Expenditures by Functions as a Percentage of Total Expenditures.....32
Endowment Fund Balance - Market Value33
Property, Plant and Equipment34
Assets.....34

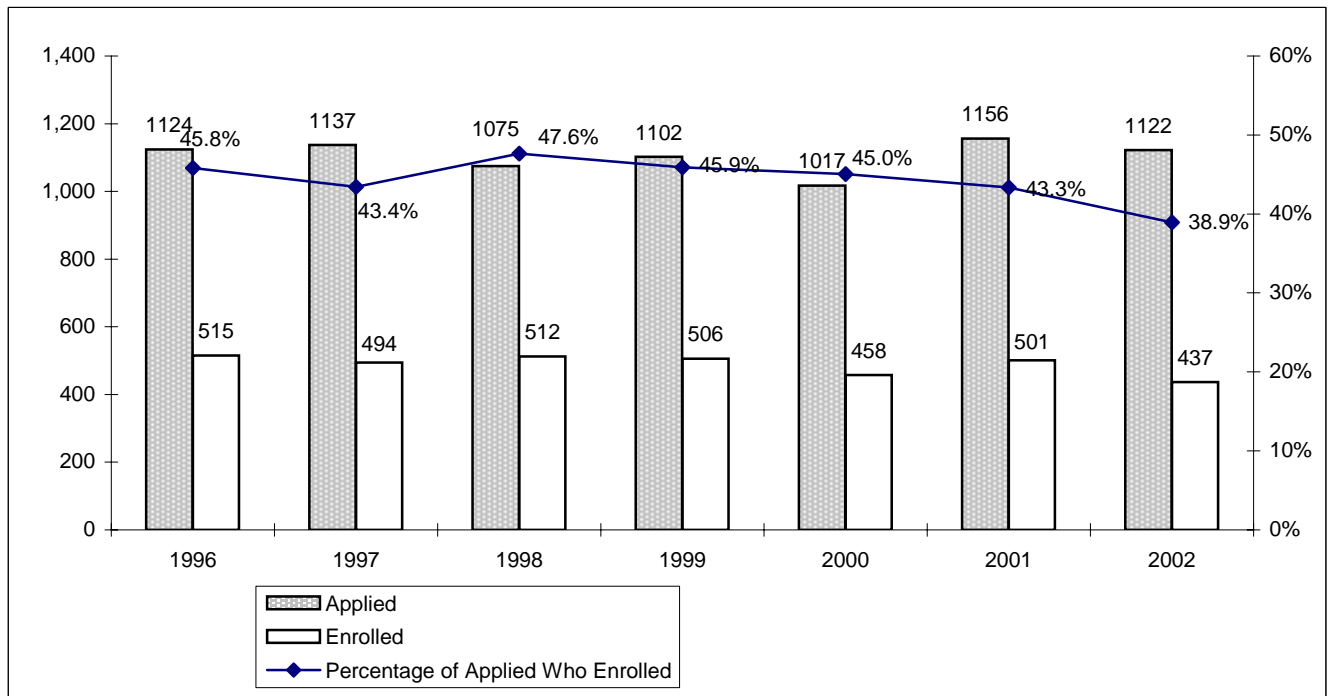
Enrollment and Student Characteristics



**New Freshman Applications and Enrollment*
Fall 1996 - Fall 2002**

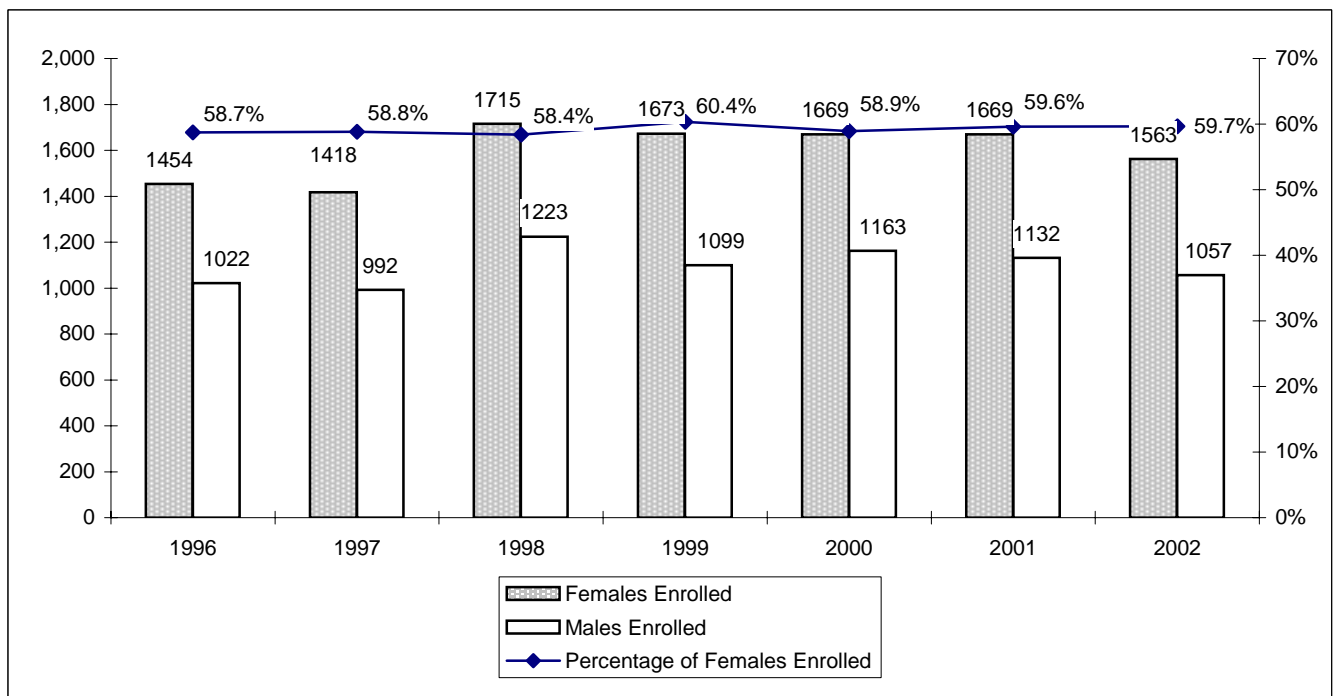
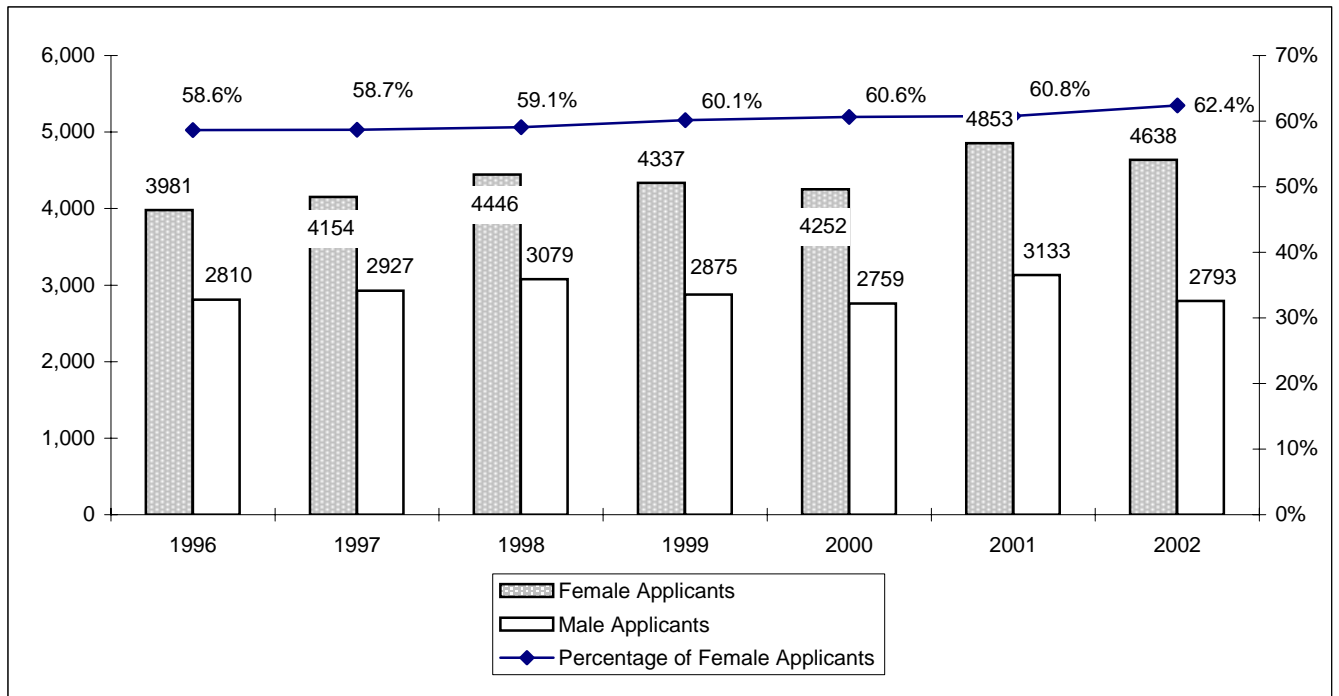


**Transfer Applications and Enrollment*
Fall 1996 - Fall 2002**



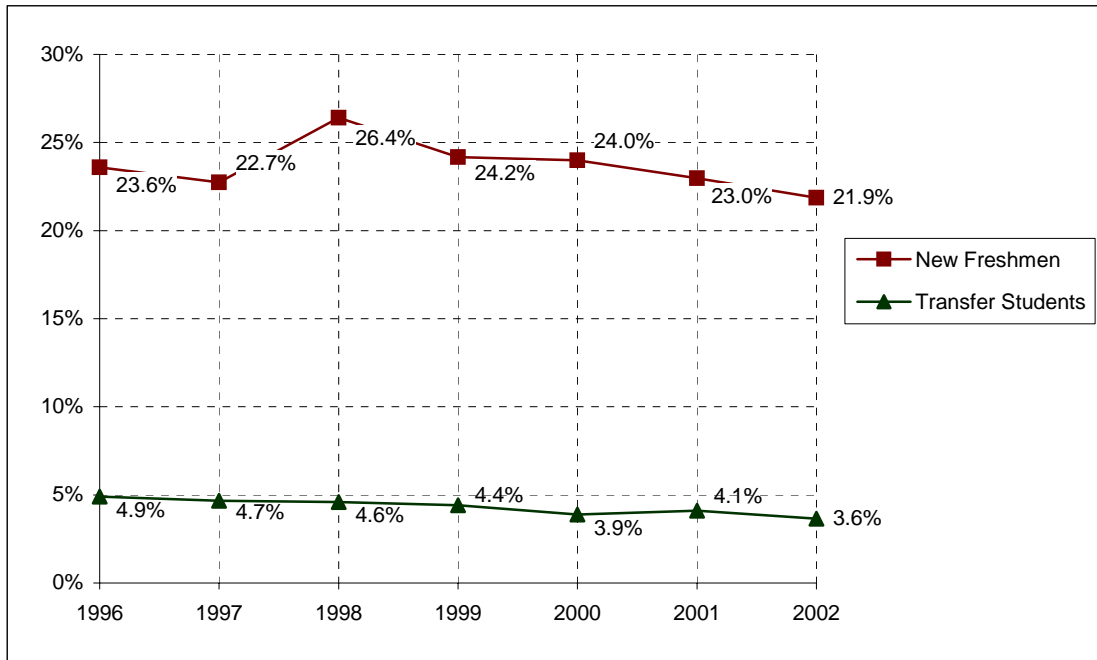
*Applications that were canceled and changed to future terms not included through 1998. Enrollment as of 12th class day.

**New Freshman Applications and Enrollment by Gender*
Fall 1996 - Fall 2002**



*Applications that were canceled and changed to future terms not included through 1998. Enrollment as of 12th class day.

**New Freshman and Transfer Student Enrollment
Fall 1996 - Fall 2002**



	Fall	1996	1997	1998	1999	2000	2001	2002
New Freshmen		2,476	2,410	2,938	2,772	2,832	2,801	2,620
New Transfer Students		515	494	512	506	458	501	437
Undergraduate Enrollment		10,500	10,597	11,124	11,472	11,806	12,190	11,987
% New Freshmen		23.6%	22.7%	26.4%	24.2%	24.0%	23.0%	21.9%
% New Transfer Students		4.9%	4.7%	4.6%	4.4%	3.9%	4.1%	3.6%

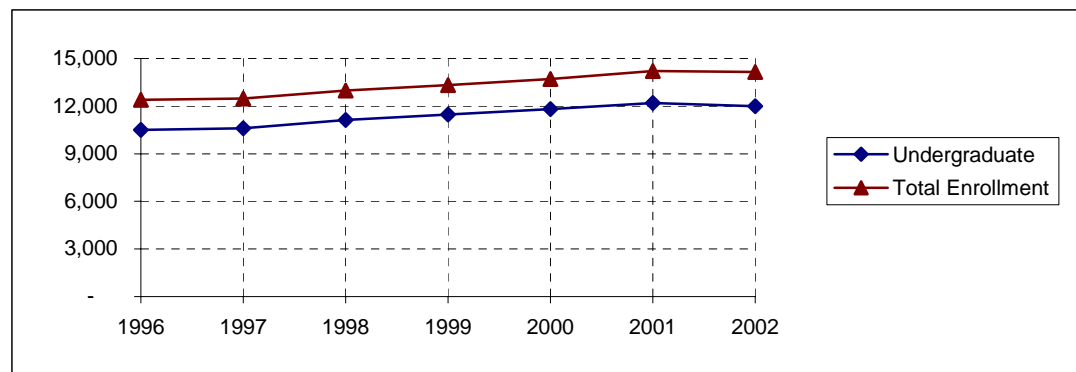
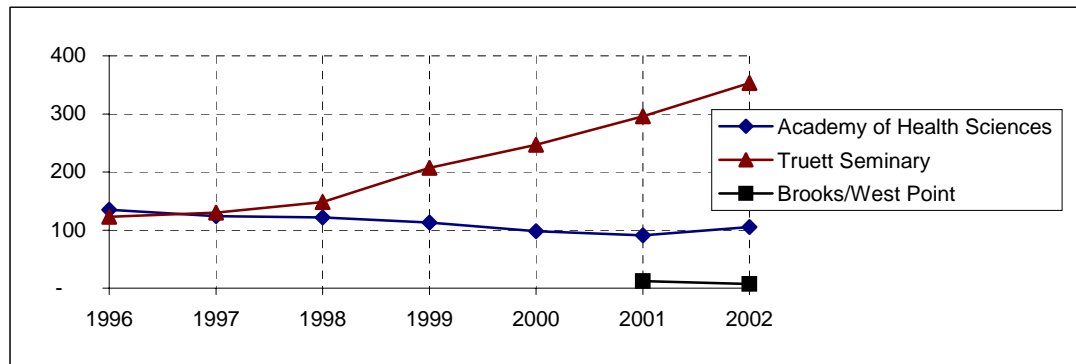
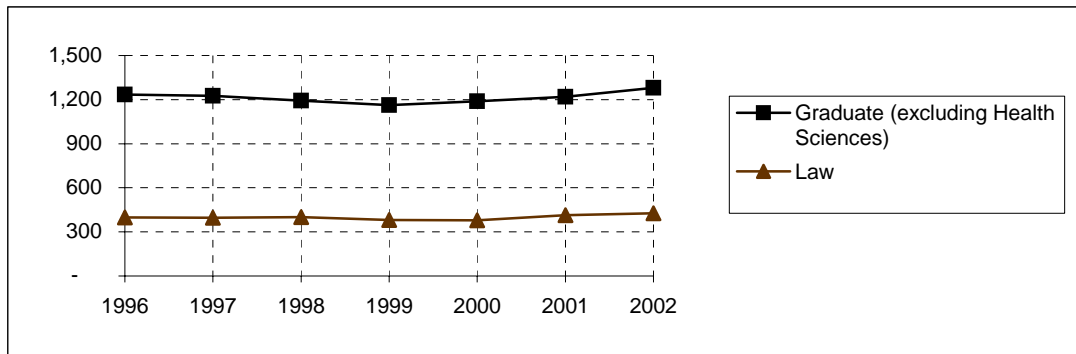
Notes:

1. Freshmen who enter the University in the fall or preceding summer term are counted as "new freshmen." Similarly, transfer students entering in the fall or preceding summer term are counted as "transfer students" for the fall semester.
2. "Transfer students" refers to the entering summer/fall group of transfer students. For example, in Fall 1998, the 512 entering transfer students comprised 4.6% of the 11,124 undergraduates. However, for Fall 1998, the total number of enrolled undergraduates who had transferred into the University consisted of (a) transfers who entered in Fall 1998 and (b) students who transferred into the University in previous academic years. Generally, the total enrollment of students who had entered as transfer students is approximately 15% of the undergraduate student body.

Enrollment by Classification
Fall 1996 - Fall 2002

	Fall	1996	1997	1998	1999	2000	2001	2002
Freshman		3,151	3,070	3,566	3,534	3,678	3,613	3,309
Sophomore		2,210	2,458	2,333	2,619	2,565	2,686	2,679
Junior		2,166	2,139	2,314	2,244	2,516	2,565	2,595
Senior		2,819	2,774	2,779	2,956	2,916	3,194	3,297
Special		26	40	28	29	26	23	22
Postbaccalaureate		128	116	104	90	105	109	85
TOTAL UNDERGRADUATE		10,500	10,597	11,124	11,472	11,806	12,190	11,987
Master's		854	821	807	760	788	802	843
Doctoral		349	356	360	373	379	397	416
Graduate Transient/Nondegree		23	28	10	6	6	11	10
Special Graduate		9	20	15	18	8	-	-
Graduate Professional					5	8	9	12
TOTAL "WACO" GRADUATE		1,235	1,225	1,192	1,162	1,189	1,219	1,281
School of Law		398	396	401	380	379	413	426
Truett Seminary		123	130	148	207	247	296	353
Academy of Health Sciences		135	124	122	113	98	91	105
Brooks/West Point							12	7
College of Dentistry								
TOTAL ENROLLMENT		12,391	12,472	12,987	13,334	13,719	14,221	14,159

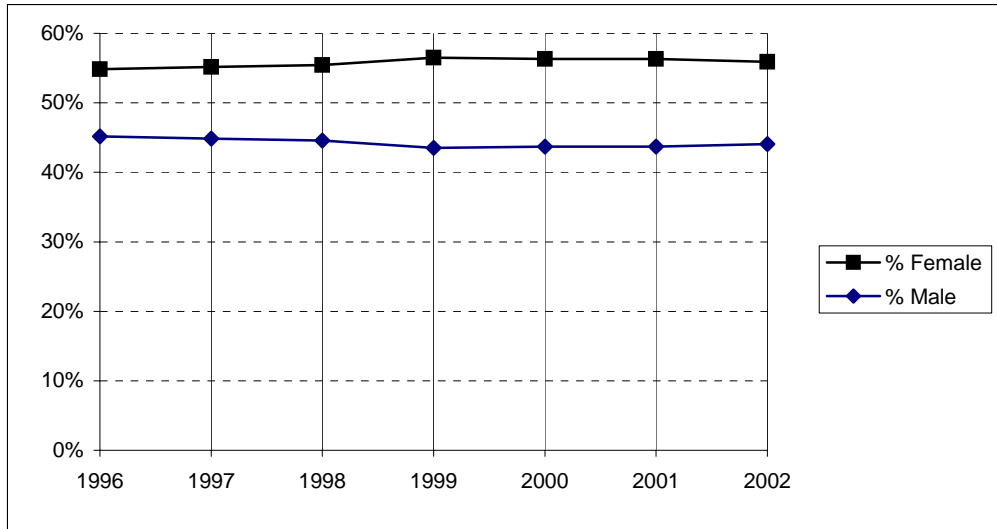
**Enrollment
Fall 1996 - Fall 2002**



Fall	1996	1997	1998	1999	2000	2001	2002
Undergraduate	10,500	10,597	11,124	11,472	11,806	12,190	11,987
Graduate (excluding Health Sciences)	1,235	1,225	1,192	1,162	1,189	1,219	1,281
Law	398	396	401	380	379	413	426
Truett Seminary	123	130	148	207	247	296	353
SUBTOTAL	12,256	12,348	12,865	13,221	13,621	14,118	14,047
Academy of Health Sciences	135	124	122	113	98	91	105
Brooks/West Point						12	7
TOTAL ENROLLMENT	12,391	12,472	12,987	13,334	13,719	14,221	14,159

Source: IMTS.

**Enrollment by Gender
(Excluding Health Sciences)
Fall 1996 - Fall 2002**

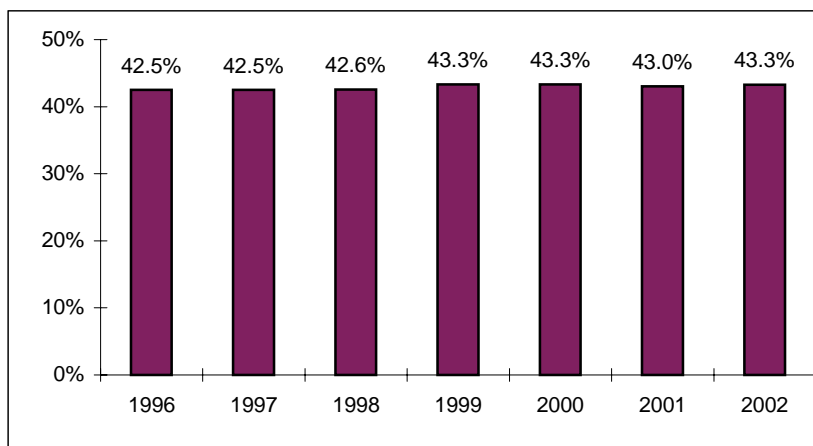


	Fall	1996	1997	1998	1999	2000	2001	2002
Female		6,719	6,809	7,131	7,467	7,670	7,950	7,854
Male		5,537	5,539	5,734	5,754	5,951	6,168	6,193
Total (excluding Health Sciences)		12,256	12,348	12,865	13,221	13,621	14,118	14,047
% Female		54.8%	55.1%	55.4%	56.5%	56.3%	56.3%	55.9%
% Male		45.2%	44.9%	44.6%	43.5%	43.7%	43.7%	44.1%

**Enrollment by Religious Affiliation
(Excluding Health Sciences)
Fall 1996 - Fall 2002**

Fall	1996	1997	1998	1999	2000	2001	2002
Assembly of God	157	148	149	153	135	135	124
Baptist	5,208	5,247	5,475	5,727	5,903	6,076	6,076
Buddhist	75	66	70	72	70	77	71
Catholic	1,528	1,544	1,590	1,619	1,674	1,694	1,659
Christian Scientist	8	6	8	5	2	10	13
Church of Christ	246	243	260	254	287	279	283
Church of God	32	18	25	19	19	25	21
Congregational	20	14	14	16	16	23	23
Disciples of Christ	85	83	81	89	88	73	70
Eastern Orthodox	44	45	44	27	29	31	32
Episcopalian	289	271	271	302	310	307	294
Four Square Gospel	13	11	9	7	10	9	10
Hindu	65	75	67	77	83	88	85
Interdenominational	389	403	425	429	466	460	477
Jehovah's Witness	9	9	9	14	12	11	10
Jewish	10	10	8	11	9	17	14
Latter Day Saints (Mormon)	19	19	22	19	21	19	23
Lutheran	383	346	383	398	396	386	388
Mennonite	4	3	5	7	7	5	6
Methodist	1,274	1,190	1,168	1,163	1,203	1,251	1,280
Moslem	55	56	58	77	86	100	109
Nazarene	27	30	29	34	27	28	25
Non-Denominational					102	251	270
Pentecostal	74	72	67	80	88	106	115
Presbyterian	542	528	532	518	552	571	534
Society of Friends	7	6	7	5	4	4	3
Unitarian	11	8	6	8	9	8	6
United Brethren	5	6	6	8	6	4	4
Other/Not Specified	1,677	1,891	2,077	2,083	2,007	2,070	2,022
TOTAL RELIGION	12,256	12,348	12,865	13,221	13,621	14,118	14,047

**Baptist Percentage
(Excluding Health Sciences)
Fall 1996 - Fall 2002**



**Enrollment by Racial / Ethnic Group*
Fall 1996 - Fall 2002**

A.

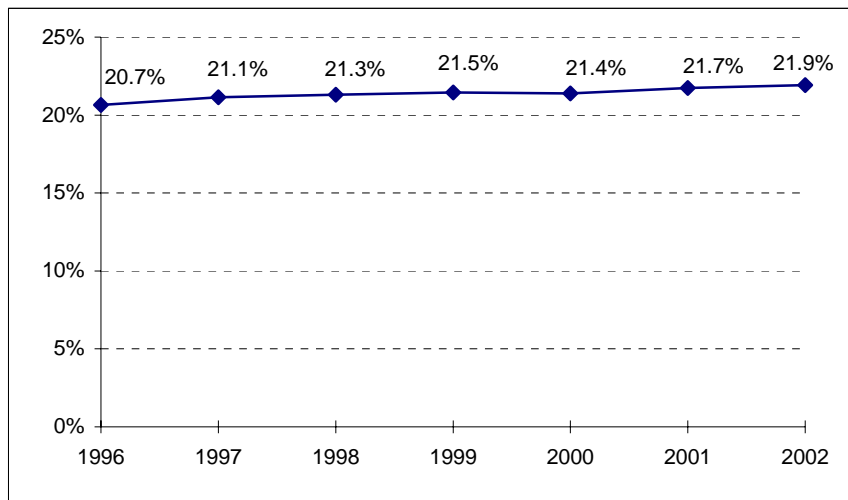
	Fall	1996	1997	1998	1999	2000	2001	2002
African American/Black		623	685	726	751	750	774	771
American Indian/Alaskan Native		60	64	74	65	64	63	75
Asian/Pacific Islander		796	793	809	847	876	903	883
Hispanic		931	917	941	959	967	1,051	1,078
White		9,739	9,717	9,995	10,278	10,671	11,033	10,919
Other		149	178	216	239	276	301	296
Not Specified		93	118	226	195	115	96	137
Total		12,391	12,472	12,987	13,334	13,719	14,221	14,159

B.

	Fall	1996	1997	1998	1999	2000	2001	2002
African American/Black		609	675	713	731	733	753	744
American Indian/Alaskan Native		60	63	73	64	64	63	75
Asian/Pacific Islander		646	635	636	648	664	669	660
Hispanic		893	880	918	936	939	1,017	1,045
White		9,681	9,656	9,934	10,225	10,612	10,967	10,854
Other		120	149	189	209	237	258	250
Not Specified		81	112	212	181	108	91	125
NONRESIDENT ALIEN		301	302	312	340	362	403	406
Total		12,391	12,472	12,987	13,334	13,719	14,221	14,159

*In Table B, nonresident aliens are partitioned as a group.

**Racial / Ethnic Minority Percentage
Fall 1996 - Fall 2002
(From Table A)**



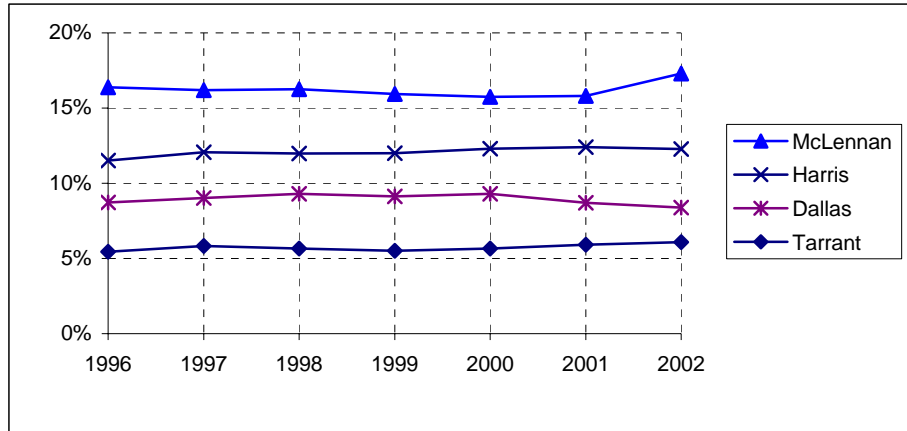
**Leading Texas Counties of Origin
Fall 1996 - Fall 2002**

Fall	1996	1997	1998	1999	2000	2001	2002
McLennan	2,030	2,020	2,112	2,124	2,161	2,248	2,448
Harris	1,425	1,505	1,556	1,601	1,687	1,763	1,738
Dallas	1,080	1,125	1,208	1,217	1,276	1,238	1,188
Tarrant	675	726	734	735	777	840	863
Collin	302	304	363	431	489	505	490
Bexar	489	508	570	528	532	521	475
Fort Bend	172	194	218	237	299	331	332
Travis	242	238	267	283	304	326	331
Montgomery	151	184	204	224	253	273	266
Bell	220	220	234	203	206	237	204
Denton	124	139	145	131	131	136	160
Williamson	110	110	115	133	125	138	154
Smith	90	97	117	128	123	149	147
Gregg	126	125	118	134	141	144	135
Galveston	104	106	98	105	119	117	119
Brazoria	63	61	64	79	90	117	115
Taylor	49	48	71	89	94	102	100
El Paso	90	78	90	93	105	97	93
Nueces	89	93	95	91	89	98	88
Hidalgo	105	87	107	94	81	79	85
Jefferson	77	78	87	91	88	83	78
Johnson	51	56	64	72	76	89	75

**Leading States of Origin
Fall 1996 - Fall 2002**

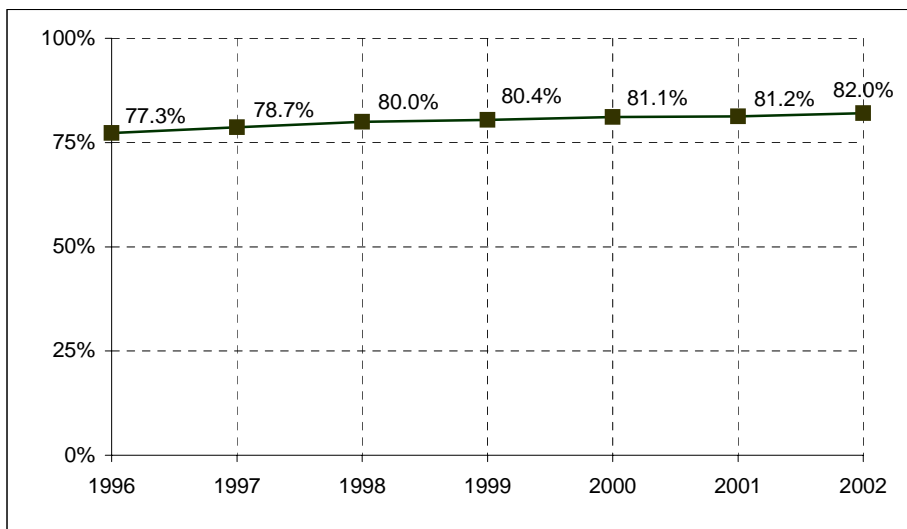
Fall	1996	1997	1998	1999	2000	2001	2002
Texas	9,579	9,811	10,386	10,726	11,128	11,553	11,613
California	286	278	273	268	250	246	227
Oklahoma	254	247	237	229	218	221	204
Louisiana	163	157	147	146	144	163	156
Colorado	145	149	135	134	134	138	137
Arkansas	157	140	122	113	118	132	129
Missouri	148	122	111	116	114	111	110
Kansas	111	105	110	109	111	110	96
Illinois	82	79	78	73	80	88	87
Tennessee	99	103	88	82	84	74	72
New Mexico	84	73	70	76	63	76	69

**Percentage From Top Four Texas Counties
Fall 1996 - Fall 2002**



Fall	1996	1997	1998	1999	2000	2001	2002
McLennan	16.4%	16.2%	16.3%	15.9%	15.8%	15.8%	17.3%
Harris	11.5%	12.1%	12.0%	12.0%	12.3%	12.4%	12.3%
Dallas	8.7%	9.0%	9.3%	9.1%	9.3%	8.7%	8.4%
Tarrant	5.4%	5.8%	5.7%	5.5%	5.7%	5.9%	6.1%

**Percentage From Texas
Fall 1996 - Fall 2002**

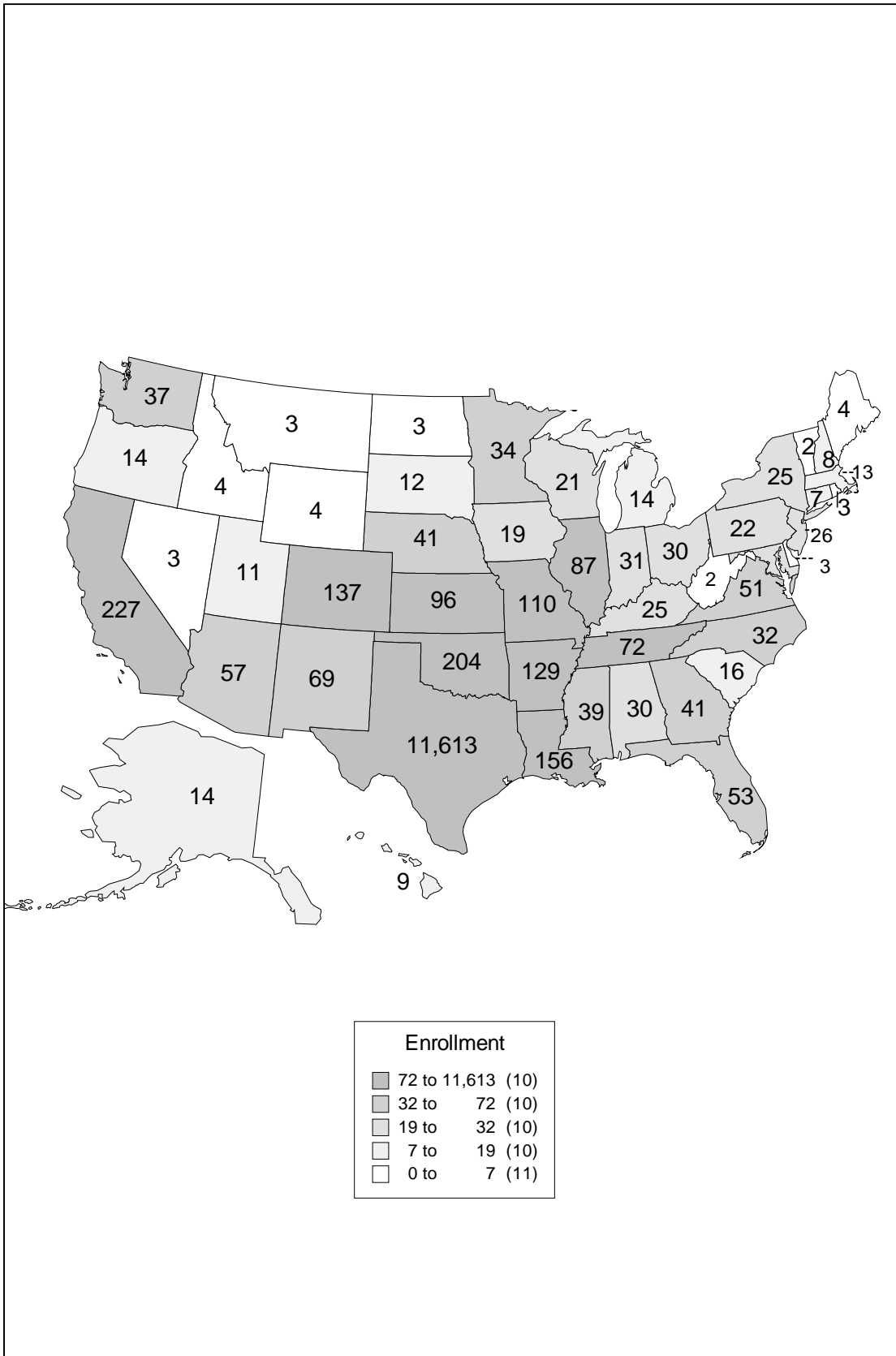


**Texas Enrollment by County
Fall 2002**

	n		n		n		n		n
Anderson	30	Crane	0	Hartley	1	Madison	3	San Patricio	15
Andrews	5	Crockett	0	Haskell	2	Marion	2	San Saba	1
Angelina	24	Crosby	0	Hays	24	Martin	0	Schleicher	0
Aransas	3	Culberson	1	Hemphill	0	Mason	1	Scurry	9
Archer	1	Dallam	2	Henderson	15	Matagorda	14	Shackelford	2
Armstrong	0	Dallas	1,188	Hidalgo	85	Maverick	19	Shelby	15
Atascosa	5	Dawson	0	Hill	40	McCulloch	0	Sherman	1
Austin	19	De Witt	2	Hockley	3	McLennan	2,448	Smith	147
Bailey	3	Deaf Smith	2	Hood	13	McMullen	1	Somervell	1
Bandera	6	Delta	2	Hopkins	18	Medina	4	Starr	2
Bastrop	8	Denton	160	Houston	9	Menard	2	Stephens	7
Baylor	0	Dickens	0	Howard	4	Midland	42	Sterling	0
Bee	7	Dimmit	2	Husdpeth	0	Milam	11	Stonewall	0
Bell	204	Donley	1	Hunt	16	Mills	1	Sutton	4
Bexar	475	Duval	0	Hutchinson	8	Mitchell	1	Swisher	1
Blanco	2	Eastland	5	Irion	0	Montague	3	Tarrant	863
Borden	0	Ector	28	Jack	1	Montgomery	266	Taylor	100
Bosque	25	Edwards	0	Jackson	5	Moore	2	Terrell	0
Bowie	28	El Paso	93	Jasper	10	Morris	8	Terry	2
Brazoria	115	Ellis	75	Jeff Davis	1	Motley	0	Throckmorton	0
Brazos	34	Erath	9	Jefferson	78	Nacagdoches	27	Titus	20
Brewster	0	Falls	16	Jim Hogg	0	Navarro	24	Tom Green	17
Briscoe	0	Fannin	5	Jim Wells	1	Newton	2	Travis	331
Brooks	1	Fayette	6	Johnson	75	Nolan	6	Trinity	3
Brown	13	Fisher	0	Jones	2	Nueces	88	Tyler	3
Burleson	1	Floyd	2	Karnes	5	Ochiltree	0	Upshur	21
Burnett	16	Foard	0	Kaufman	28	Oldham	1	Upton	0
Caldwell	4	Fort Bend	332	Kendall	30	Orange	12	Uvalde	2
Calhoun	8	Franklin	11	Kenedy	0	Palo Pinto	2	Val Verde	4
Callahan	1	Freestone	11	Kent	0	Panola	10	Van Zandt	10
Cameron	63	Frio	1	Kerr	27	Parker	51	Victoria	34
Camp	2	Gaines	0	Kimble	0	Parmer	0	Walker	11
Carson	1	Galveston	119	King	0	Pecos	1	Waller	3
Cass	13	Garza	2	Kinney	0	Polk	10	Ward	1
Castro	1	Gillespie	10	Kleberg	3	Potter	68	Washington	21
Chambers	4	Glasscock	0	Knox	0	Presidio	0	Webb	31
Cherokee	17	Goliad	1	La Salle	3	Rains	2	Wharton	19
Childress	1	Gonzales	3	Lamar	16	Randall	9	Wheeler	0
Clay	1	Gray	3	Lamb	1	Reagan	1	Wichita	22
Cochran	0	Grayson	33	Lampasas	11	Real	0	Wilbarger	6
Coke	0	Gregg	135	Lavaca	10	Red River	1	Willacy	3
Coleman	3	Grimes	1	Lee	7	Reeves	2	Williamson	154
Collin	490	Guadalupe	30	Leon	6	Refugio	2	Wilson	9
Collingworth	2	Hale	10	Liberty	21	Roberts	0	Winkler	2
Colorado	4	Hall	1	Limestone	16	Robertson	6	Wise	8
Comal	33	Hamilton	3	Lipscomb	0	Rockwall	67	Wood	12
Comanche	3	Hansford	1	Live Oak	2	Runnels	1	Yoakum	1
Concho	1	Hardeman	1	Llano	5	Rusk	15	Young	5
Cooke	9	Hardin	12	Loving	0	Sabine	3	Zapata	1
Coryell	34	Harris	1,738	Lubbock	42	San Augustine	1	Zavala	0
Cottle	1	Harrison	25	Lynn	0	San Jacinto	2	Total	11,613

Source: ICUT.

**Enrollment by State
Fall 2002**

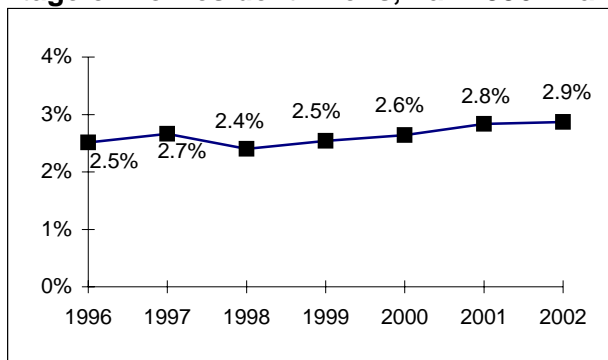


Countries Represented by Nonresident Aliens, Fall 1996 - Fall 2002

	Fall 1996	1997	1998	1999	2000	2001	2002		Fall 1996	1997	1998	1999	2000	2001	2002
Albania	1	-	-	-	-	-	-	Macao	1	-	-	-	-	-	-
Angola	-	-	-	-	-	-	-	Malaysia	-	1	4	2	2	2	1
Argentina	1	-	-	1	2	6	6	Mali	-	-	-	2	2	2	-
Australia	7	5	5	3	5	5	4	Mauritius	-	1	1	1	1	-	-
Austria	-	-	1	1	1	-	1	Mexico	18	15	9	6	9	9	6
Bahamas	-	-	1	2	2	2	2	Nepal	-	-	1	1	1	1	2
Bangladesh	2	3	4	3	2	3	3	Netherlands	3	1	1	1	1	-	1
Belgium	-	2	2	2	1	1	1	New Zealand	1	1	1	1	2	1	-
Belize	1	3	1	1	1	1	1	Nicaragua	-	-	1	-	1	2	1
Bolivia	-	1	-	-	1	1	1	Nigeria	3	4	8	8	7	10	15
Brazil	1	2	1	4	2	5	6	North Mariana Isle	-	-	2	1	1	1	-
British Virgin Islands	1	1	1	1	1	-	-	Norway	5	5	3	-	1	2	2
Bulgaria	5	7	8	6	6	6	4	Pakistan	5	1	1	9	8	9	10
Cambodia	-	-	-	-	-	1	1	Panama	5	5	1	1	-	1	2
Cameroon	-	-	-	-	-	1	1	Peru	-	-	-	-	-	1	1
Canada	11	12	16	15	17	16	18	Philippines	-	-	1	-	-	-	-
Cayman Islands	1	2	-	-	-	1	2	Poland	4	4	2	2	2	1	1
Chile	2	2	2	2	1	-	-	Romania	2	5	4	5	3	4	4
China*	60	56	56	62	64	65	69	Russia	6	3	1	3	4	3	4
Colombia	6	7	7	3	2	-	1	Rwanda	1	-	-	1	1	1	2
Coral Sea Isle Terr.	-	-	1	1	1	-	-	Saudi Arabia	-	-	-	1	2	1	1
Costa Rica	2	3	3	4	4	5	7	Senegal	-	-	1	1	1	-	-
Croatia	-	-	1	1	-	-	2	Serbia	-	-	-	-	-	1	1
Cyprus	-	-	-	-	1	-	-	Sierra Leone	-	-	-	-	-	-	1
Czech Republic	3	3	3	-	1	-	-	Singapore	1	2	2	2	3	4	1
Dominican Republic	-	-	-	-	-	1	1	Slovakia	1	1	1	-	-	1	1
Ecuador	-	-	1	-	-	2	3	Slovenia	-	-	1	2	2	2	2
El Salvador	1	1	-	-	-	-	-	Somalia	-	-	-	1	1	1	-
Eritrea	1	1	-	-	-	-	-	South Africa	2	3	3	2	1	2	5
Estonia	-	1	-	-	-	-	-	Soviet Union	-	-	1	2	2	1	-
Ethiopia	1	-	-	1	1	1	-	Spain	4	3	2	2	1	1	2
Finland	1	2	1	1	-	-	-	Sri Lanka	2	5	4	5	5	6	4
France	6	4	4	3	6	3	4	St Vincent & Grenadine	-	-	-	-	-	-	1
Georgia	-	-	-	-	-	-	3	Sudan	1	-	-	-	-	-	-
Germany	-	4	3	3	6	10	7	Sweden	4	3	5	7	5	8	4
Ghana	1	1	-	-	2	3	-	Switzerland	1	4	4	3	2	1	-
Guatemala	1	-	-	-	1	2	2	Taiwan	18	31	29	39	42	41	36
Honduras	6	7	4	2	2	1	1	Thailand	7	8	5	8	5	6	5
Hungary	-	2	3	3	6	6	6	Togo	1	1	1	1	-	-	-
Iceland	-	-	2	-	-	-	-	Trinidad/Tobago	1	1	-	-	1	3	5
India	20	17	21	24	29	32	39	Turkey	-	-	-	2	-	-	1
Indonesia	10	9	11	11	9	6	5	Uganda	1	-	-	-	-	1	3
Ireland	1	-	-	1	-	-	-	Ukraine	2	1	-	1	2	5	4
Italy	1	1	-	1	1	1	2	United Arab Emirates	1	-	1	1	2	2	2
Jamaica	-	1	2	3	3	2	1	United Arab Republic	-	-	-	-	-	1	-
Japan	14	11	12	17	17	16	10	United Kingdom	11	7	9	6	5	4	8
Jordan	-	-	1	-	-	-	-	Uzbekistan	2	-	-	-	-	-	-
Kazakhstan	2	2	-	-	-	-	-	Venezuela	3	4	1	4	7	10	9
Kenya	4	3	2	3	4	6	5	Vietnam	-	-	-	-	-	2	2
Korea	-	-	-	-	-	-	3	Yugoslavia	1	1	-	-	-	-	-
Korea, Rep. of	18	33	21	20	23	32	29	Zambia	1	1	-	-	-	-	-
Kuwait	-	-	-	-	-	1	1	Zimbabwe	1	1	-	-	1	2	2
Latvia	-	-	-	-	-	1	1								
Lebanon	1	-	-	-	1	2	1	Total	311	332	312	339	362	403	406

*Beginning Fall 1997, Hong Kong counted in China.

Percentage of Nonresident Aliens, Fall 1996 - Fall 2002



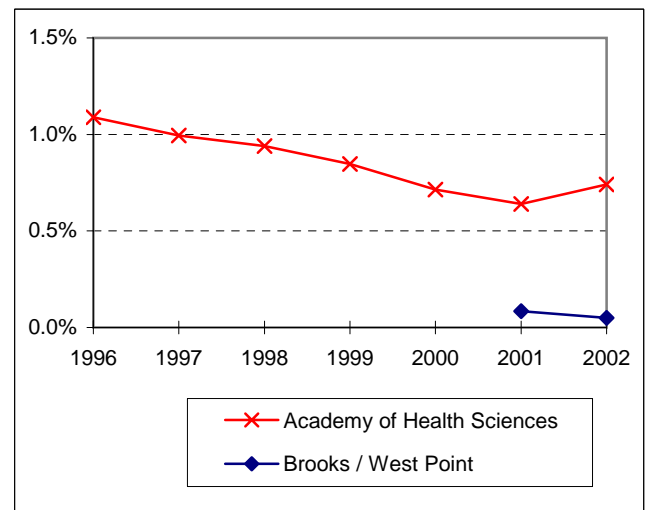
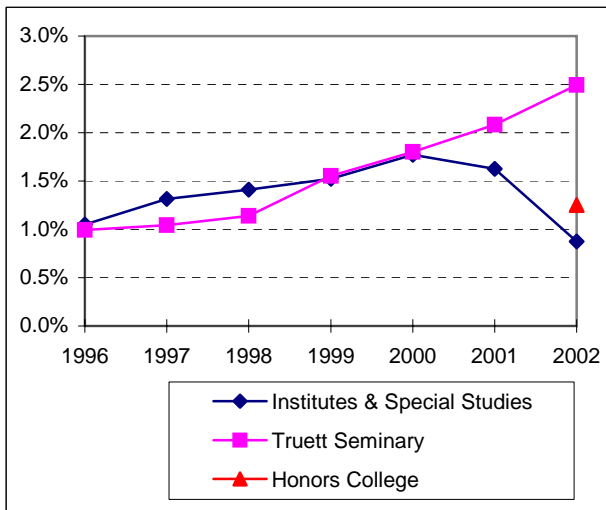
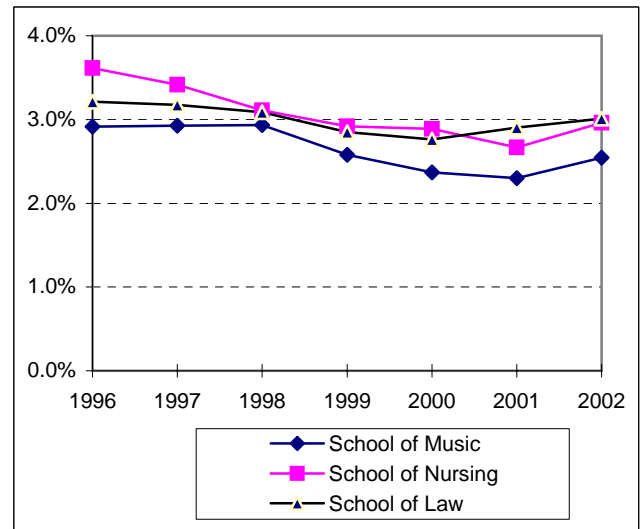
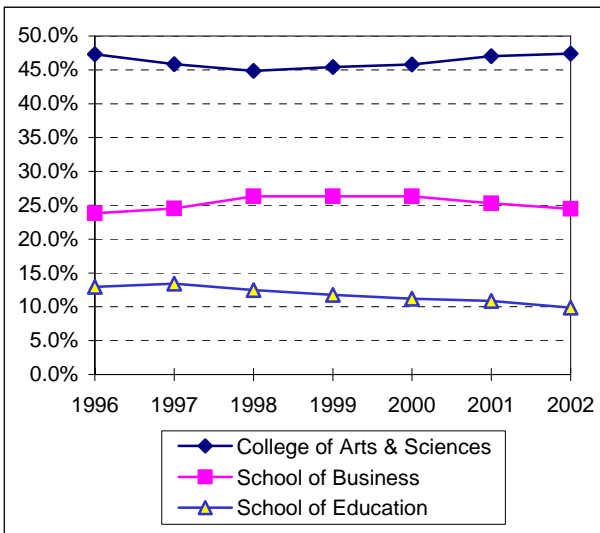
**Enrollment by Unit
Fall 1996 - Fall 2002**

	Fall	1996	1997	1998	1999	2000	2001	2002
College of Arts & Sciences		5,862	5,718	5,823	6,056	6,281	6,684	6,713
School of Business		2,950	3,059	3,421	3,508	3,609	3,598	3,463
School of Education		1,604	1,672	1,619	1,568	1,534	1,546	1,397
School of Engineering & Computer Sci.		348	370	460	542	593	633	605
School of Music		361	365	381	344	325	327	360
School of Nursing		448	426	404	389	396	379	419
Honors College		-	-	-	-	-	-	177
Institutes & Special Studies		130	164	183	203	243	231	124
Graduate School		32	48	25	24	14	11	10
School of Law		398	396	401	380	379	413	426
Truett Seminary		123	130	148	207	247	296	353
Academy of Health Sciences		135	124	122	113	98	91	105
Brooks / West Point		-	-	-	-	-	12	7
TOTAL		12,391	12,472	12,987	13,334	13,719	14,221	14,159

Notes:

1. The enrollment for the Graduate School reflects students classified as "No Major."
2. A new doctoral program in Physical Therapy was added in 2001. This program is administered through the Brooks and West Point academies.
3. The Honors College was established in 2002.

Enrollment Percentage by Unit
Fall 1996 - Fall 2002



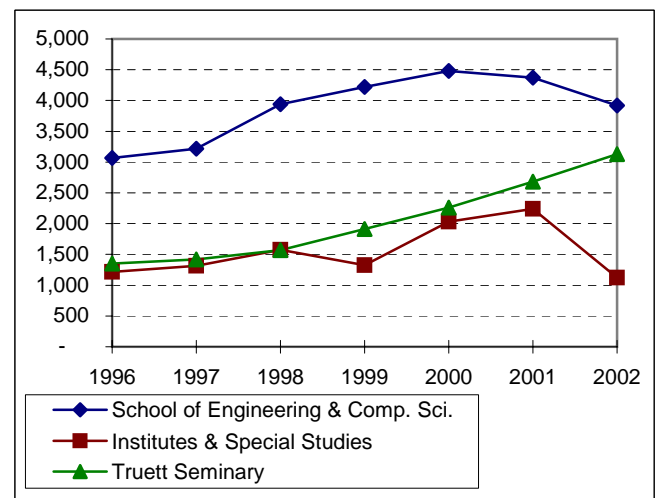
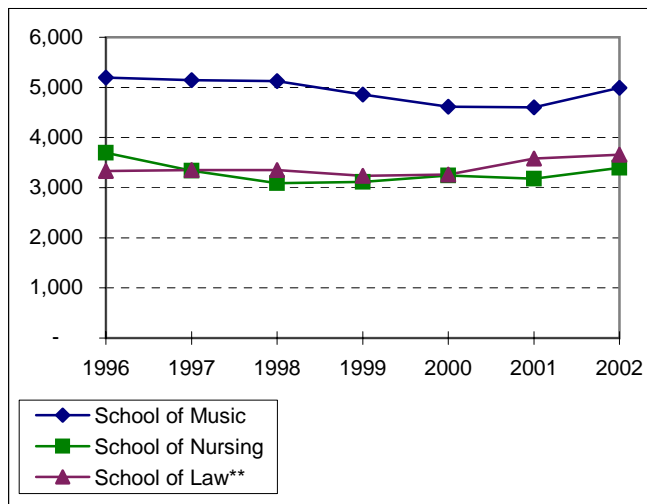
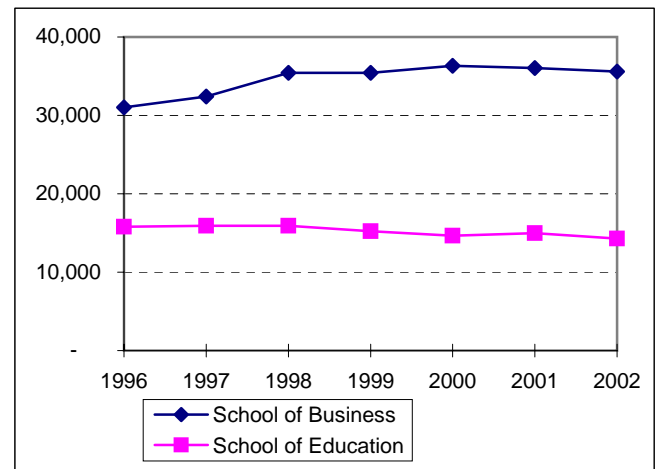
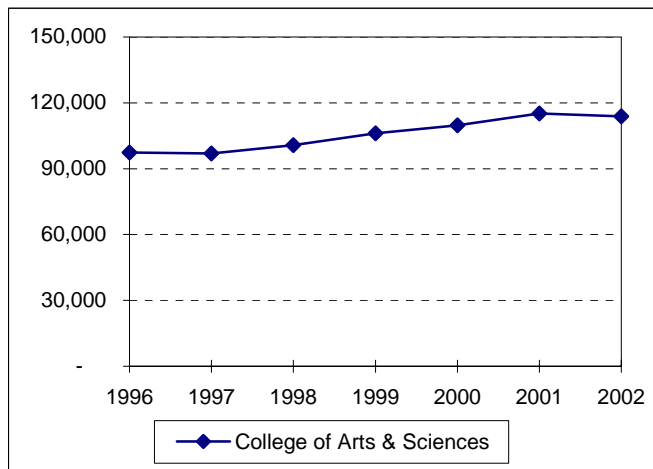
	Fall	1996	1997	1998	1999	2000	2001	2002
College of Arts & Sciences		47.3%	45.8%	44.8%	45.4%	45.8%	47.0%	47.4%
School of Business		23.8%	24.5%	26.3%	26.3%	26.3%	25.3%	24.5%
School of Education		12.9%	13.4%	12.5%	11.8%	11.2%	10.9%	9.9%
School of Engineering & Computer Sci.		2.8%	3.0%	3.5%	4.1%	4.3%	4.5%	4.3%
School of Music		2.9%	2.9%	2.9%	2.6%	2.4%	2.3%	2.5%
School of Nursing		3.6%	3.4%	3.1%	2.9%	2.9%	2.7%	3.0%
Honors College								1.3%
Institutes & Special Studies		1.0%	1.3%	1.4%	1.5%	1.8%	1.6%	0.9%
Graduate School					0.2%	0.1%	0.1%	0.1%
School of Law		3.2%	3.2%	3.1%	2.8%	2.8%	2.9%	3.0%
Truett Seminary		1.0%	1.0%	1.1%	1.6%	1.8%	2.1%	2.5%
Academy of Health Sciences		1.1%	1.0%	0.9%	0.8%	0.7%	0.6%	0.7%
Brooks / West Point							0.1%	0.0%

See Notes, page 14.

Source: IMTS.

**Student Credit Hours by Unit*
(Excluding Health Sciences)
Fall 1996 - Fall 2002**

	Fall	1996	1997	1998	1999	2000	2001	2002
College of Arts & Sciences		97,393	97,007	100,794	106,150	109,742	115,178	113,781
School of Business		31,037	32,418	35,429	35,429	36,307	36,057	35,600
School of Education		15,793	15,934	15,930	15,225	14,640	14,963	14,272
School of Engineering & Comp. Sci.		3,067	3,218	3,938	4,219	4,480	4,372	3,919
School of Music		5,197	5,147	5,123	4,856	4,617	4,605	4,994
School of Nursing		3,693	3,337	3,089	3,114	3,245	3,180	3,399
Honors College								2,588
Institutes & Special Studies		1,217	1,316	1,576	1,324	2,033	2,240	1,122
School of Law**		3,330	3,353	3,353	3,238	3,260	3,580	3,660
Truett Seminary		1,351	1,420	1,568	1,912	2,260	2,683	3,130
TOTAL		162,078	163,150	170,800	175,467	180,583	186,858	186,465

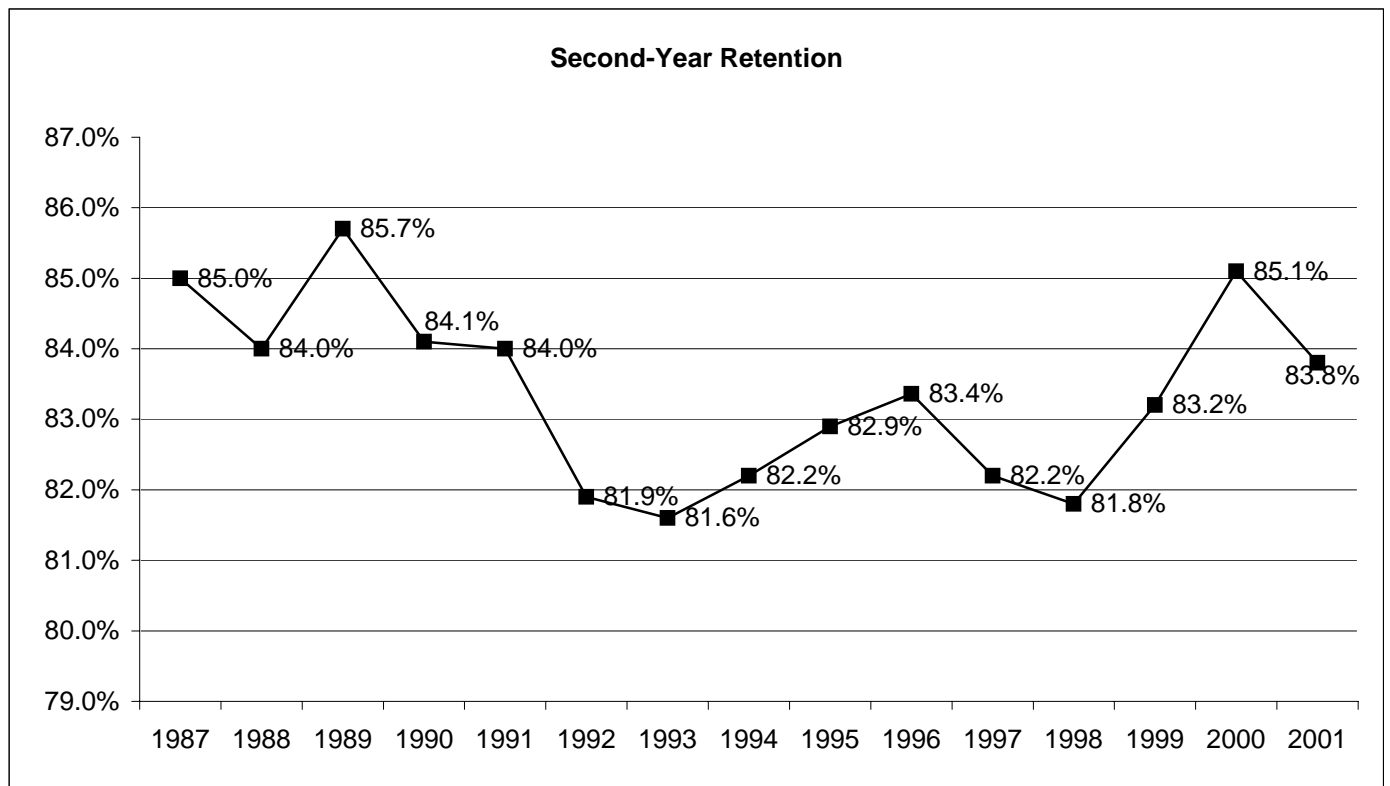


*BIC courses have been credited to the department of the instructor. See additional notes on page 14.

**Quarter hours converted to semester hours.

Retention of First-Time Freshman Classes Entering Fall 1987 - Fall 2001

First-Time Freshman Class of:	After 1 year		After 2 years		After 3 years			After 4 years			After 5 years			After 6 years		
	Cont.	Drop.	Cont.	Drop.	Cont.	Drop.	Grad.	Cont.	Drop.	Grad.	Cont.	Drop.	Grad.	Cont.	Drop.	Grad.
1987	85.0%	15.0%	75.6%	24.4%	71.7%	27.1%	1.2%	24.2%	28.2%	47.6%	3.4%	28.3%	68.3%	1.1%	28.2%	70.7%
1988	84.0%	16.0%	75.5%	24.5%	72.5%	26.5%	1.0%	29.8%	28.3%	41.9%	3.3%	28.5%	68.2%	0.8%	27.9%	71.3%
1989	85.7%	14.3%	74.8%	25.2%	71.2%	27.7%	1.1%	28.3%	28.9%	42.8%	3.9%	28.9%	67.2%	1.2%	28.8%	70.0%
1990	84.1%	15.9%	73.0%	27.0%	69.8%	29.0%	1.2%	28.1%	29.6%	42.3%	4.2%	30.0%	65.8%	1.6%	29.4%	69.0%
1991	84.0%	16.0%	74.5%	25.5%	70.7%	28.2%	1.1%	26.5%	29.6%	43.9%	3.8%	29.7%	66.5%	1.3%	29.0%	69.7%
1992	81.9%	18.1%	71.5%	28.5%	67.2%	31.5%	1.4%	28.4%	32.3%	39.3%	4.8%	32.0%	63.2%	0.9%	32.2%	66.9%
1993	81.6%	18.4%	72.0%	28.0%	68.4%	30.4%	1.2%	27.5%	32.3%	40.2%	4.5%	32.3%	63.2%	1.3%	31.8%	66.9%
1994	82.2%	17.8%	72.3%	27.7%	68.5%	30.1%	1.4%	27.0%	31.1%	41.9%	4.9%	31.9%	63.2%	1.5%	31.8%	66.7%
1995	82.9%	17.1%	76.0%	24.0%	71.4%	27.2%	1.4%	28.8%	28.3%	42.9%	4.4%	28.5%	67.1%	1.2%	28.0%	70.8%
1996	83.4%	16.6%	74.8%	25.2%	72.2%	26.9%	0.9%	29.4%	27.7%	42.9%	4.1%	27.5%	68.4%	1.3%	27.0%	71.7%
1997	82.2%	17.8%	73.7%	26.3%	70.3%	28.4%	1.2%	30.0%	29.9%	40.1%	4.9%	29.0%	66.1%			
1998	81.8%	18.2%	75.0%	25.0%	71.1%	27.1%	1.7%	28.9%	28.1%	43.0%						
1999	83.2%	16.8%	75.0%	25.0%	70.7%	27.4%	1.9%									
2000	85.1%	14.9%	77.4%	22.6%												
2001	83.8%	16.2%														
Average	83.4%	16.6%	74.4%	25.6%	70.4%	28.3%	1.3%	28.1%	29.5%	42.4%	4.2%	29.7%	66.1%	1.2%	29.4%	69.4%



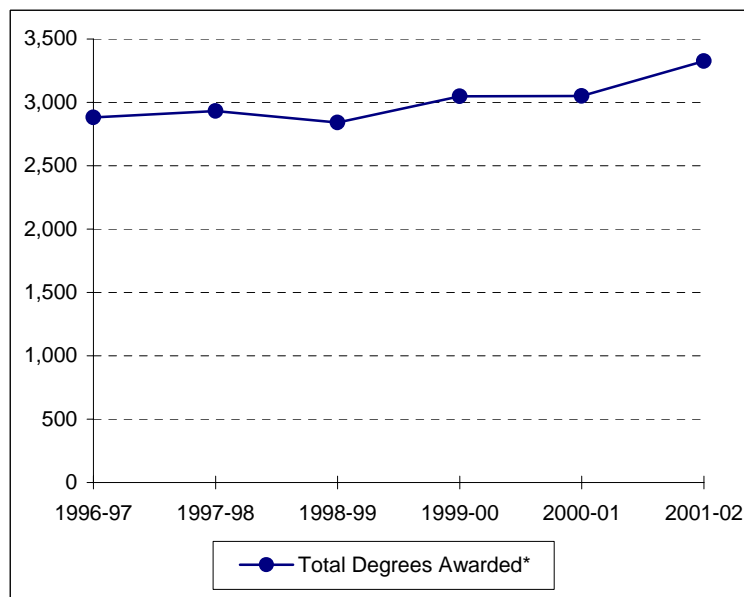
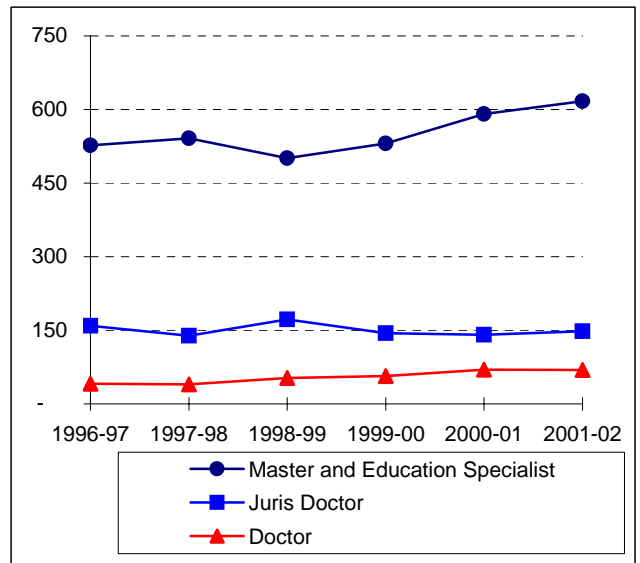
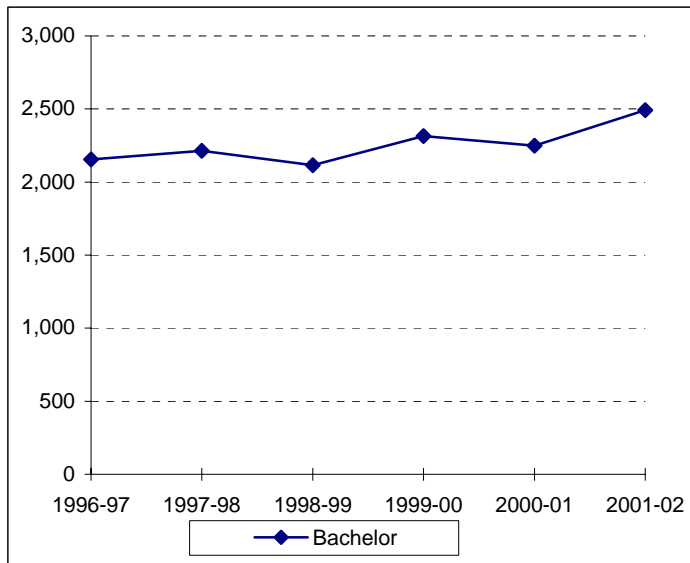
Distribution of Degrees (Duplicated Count*)
1996-97 through 2001-02

	1996-97	1997-98	1998-99	1999-00	2000-01	2001-02
Bachelor of Arts	917	894	871	910	811	997
Bachelor of Business Administration	820	886	865	951	1002	1009
Bachelor of Fine Arts	25	22	16	26	31	37
Bachelor of Music	21	32	26	24	22	30
Bachelor of Music Education	20	23	18	30	24	18
Bachelor of Science	141	145	131	135	142	165
Bachelor of Science in Aviation Sciences	3	8	5	5	8	13
Bachelor of Science in Bioinformatics					1	8
Bachelor of Science in Computer Science	15	20	21	38	24	24
Bachelor of Science in Education	361	364	355	415	350	350
Bachelor of Science in Engineering	23	21	24	24	28	41
Bachelor of Science in Family & Consumer Sciences	51	48	37	38	42	59
Bachelor of Science in Nursing	102	106	98	85	97	86
TOTAL BACHELOR DEGREES	2499	2569	2467	2681	2582	2837
Master of Accountancy			10	18	35	39
Master of Arts	82	81	62	61	58	66
Master of Business Administration	117	116	109	103	158	149
Master of Business Admin. in International Management	5	1	1	0	3	1
Master of Christian Theology	2	0				
Master of Clinical Gerontology	2	5	6	2	4	4
Master of Divinity	30	14	16	48	36	33
Master of Environmental Studies	6	4	5	2	1	0
Master of Fine Arts	1	1	2	3	2	2
Master of Health Administration	47	55	59	48	47	39
Master of International Journalism	1	2	1	0	0	1
Master of International Management	1	2	1	0	1	0
Master of Music	25	23	25	24	22	22
Master of Physical Therapy	23	24	18	22	19	21
Master of Public Policy and Administration	3	6	2	7	4	4
Master of Science	55	39	32	25	25	21
Master of Science in Clinical Psychology		21	7	12	11	8
Master of Science in Communication Sciences & Disorders	32	35	40	42	37	28
Master of Science in Economics	6	2	7	5	5	6
Master of Science in Education	61	82	74	59	43	83
Master of Science in Gerontology	10	8	7	7	9	7
Master of Science in Information Systems			5	19	27	31
Master of Science in Limnology	0	3	1	0	1	0
Master of Science in Nursing	2	10	3	7	10	14
Master of Social Work					17	27
Master of Taxation	14	6	8	18	9	6
TOTAL MASTER'S DEGREES	525	540	501	532	584	612
TOTAL EDUCATION SPECIALIST DEGREES			1	0	7	6
TOTAL JURIS DOCTOR DEGREES	158	139	172	144	141	148
Doctor of Education	17	13	17	21	31	18
Doctor of Ministry						2
Doctor of Philosophy	14	20	26	25	31	26
Doctor of Psychology	10	7	10	11	8	11
Doctor of Science in Physical Therapy						12
TOTAL DOCTORAL DEGREES	41	40	53	57	70	69
TOTAL DEGREES AWARDED	3223	3288	3194	3414	3384	3672

*Degree information on this page is reported beginning with the Summer semester and including the following Fall and Spring terms. An individual graduate with multiple majors is counted as a whole graduate in each major area of study (i.e., duplicated count).

Source: "Statistics on Enrollment and Degrees Awarded", IMTS.

**Summary of Degrees Awarded (Unduplicated Count*)
1996-97 through 2001-02**



Degree Level:	1996-97	1997-98	1998-99	1999-00	2000-01	2001-02
Bachelor	2,154	2,213	2,115	2,315	2,249	2,491
Master and Education Specialist	527	541	501	531	591	617
Juris Doctor	159	139	172	144	141	148
Doctor	41	40	53	57	70	69
Total Degrees Awarded*	2,881	2,933	2,841	3,047	3,051	3,325

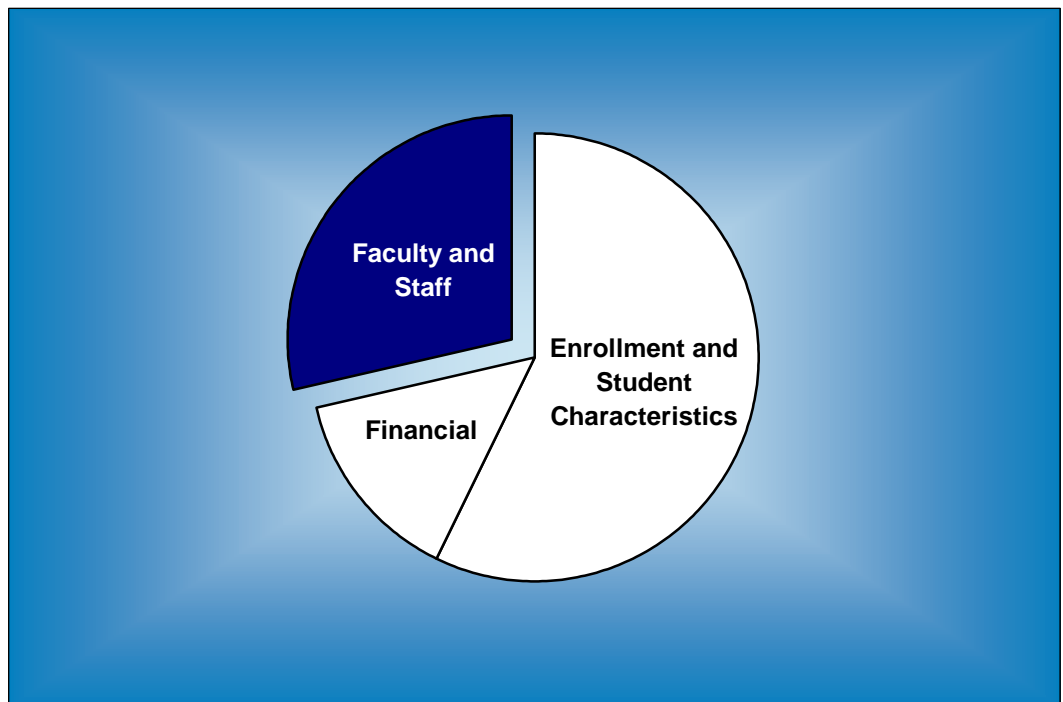
*The information on this page indicates the number of degree recipients (i.e., unduplicated count). Degree information is reported beginning with the Summer semester and including the following Fall and Spring terms.

**Degree Programs
(as of March 2003)**

Accounting (BBA)	Clinical Psychology (MSCP)	Environmental Studies (MS)
Accounting (MAcc)	Clinical Psychology (PsyD)	Family Nurse Practitioners (MSN)
Administrative Information Systems (BBA)	Communication Disorders (MA)	Fashion Design (BA)
Advanced Neonatal Nursing (MSN)	Communication Sci. & Disorders (BA)	Fashion Design (BSFCS)
Advanced Nursing Leadership (MSN)	Communication Sci. & Disorders (MSCSD)	Fashion Merchandising (BA)
American Studies (BA)	Communication Specialist (BA)	Fashion Merchandising (BSFCS)
American Studies (MA)	Communication Studies (MA)	Finance (BBA)
Anthropology (BA)	Community Health (BSEd)	Financial Services / Planning (BBA)
Applied Mathematics (BS)	Composition (BM)	Forensic Science (BS)
Applied Music (BM)	Composition (MM)	Forestry (BA)
Applied Sociology (PhD)	Computer Information Systems (BBA)	Forestry (BS)
Archaeology (BA)	Computer Information Systems-CIS (BSEd)	French (BA)
Architecture (BA)	Computer Information Systems-ISY (BSEd)	French (BSEd)
Art (BFA)	Computer Science (BA)	General Family & Consumer Sci. (BA)
Art (BSEd)	Computer Science (BSCS)	General Family & Consumer Sci. (BSFCS)
Art History (BA)	Computer Science (MS)	General Studies in HHPR (BSEd)
Asian Studies (BA)	Conducting (MM)	Generic Special Education (BSEd)
Aviation Sciences (BSAvSc)	Curriculum & Instruction (EdD)	Geography (BA)
Basic Business (BBA)	Curriculum & Instruction (EdS)	Geology (BS)
Biblical & Related Languages (BA)	Curriculum & Instruction (MA)	Geology (MS)
Biochemistry (BA)	Curriculum & Instruction (MSEd)	Geology (PhD)
Biochemistry (BS)	Dentistry (BA)	Geophysics (BS)
Bioinformatics (BSI)	Dentistry (BS)	German (BA)
Biology (BA)	Design (BFA)	German (BSEd)
Biology (BS)	Directing (MFA)	Gerontology (MSG)
Biology (BSEd)	Earth Science (BA)	Great Texts of the Western Tradition (BA)
Biology (MA)	Earth Science (BSEd)	Greek (BA)
Biology (MS)	Earth Science (MA)	Health (BSEd)
Biology (PhD)	Economics (BA)	Health Care Administration (MHA)
Biomedical Studies (MS)	Economics (BBA)	Health / Fitness Studies (BSEd)
Biomedical Studies (PhD)	Economics (BS)	Health, Human Performance & Recreation (MSEd)
Business Administration (BA)	Economics (BSEd)	Health Science Studies (BSEd)
Business Administration (BSEd)	Economics (MSEco)	History (BA)
Business Administration (MBA)	Education (MA)	History (BSEd)
Business - Broadcasting (BBA)	Educational Administration (EdD)	History (MA)
Business - Journalism (BBA)	Educational Administration (EdS)	Human Performance (BSEd)
Chemistry (BA)	Educational Administration (MSEd)	Human Resources Management (BBA)
Chemistry (BS)	Educational Psychology (EdS)	Information Systems Management (MBA)
Chemistry (BSEd)	Educational Psychology (MA)	Information Systems (MSIS)
Chemistry (MS)	Educational Psychology (MSEd)	Instrumental Music (BME)
Chemistry (PhD)	Educational Psychology (PhD)	Interdisciplinary Studies (BSEd)
Child & Family Studies (BA)	Electrical & Computer Engineering (BSE)	Interior Design (BA)
Child & Family Studies (BSFCS)	Engineering (BSE)	Interior Design (BSFCS)
Choral Music (BME)	English (BA)	International Business (BBA)
Church Music (BM)	English (BSEd)	International Economics (MA)
Church Music (MM)	English (MA)	International Economics (MS)
Church Recreation (BSEd)	English (PhD)	International Journalism (MIJ)
Church-State Studies (MA)	Entrepreneurship (BBA)	International Management (MBA)
Church-State Studies (PhD)	Environmental Biology (MS)	International Management (MBAIM)
Classics (BA)	Environmental Studies (BA)	International Management (MIM)
Clinical Gerontology (MCG)	Environmental Studies (BS)	International Relations (MA)
Clinical Laboratory Science (BS)	Environmental Studies (MES)	International Studies (BA)

Journalism (BA)	Physics (BSEd)
Journalism (BSEd)	Physics (MA)
Journalism (MA)	Physics (MS)
Language and Linguistics (BA)	Physics (PhD)
Latin American Studies (BA)	Piano Accompanying (MM)
Latin (BA)	Piano Pedagogy & Performance (MM)
Latin (BSEd)	Political Science (BA)
Law (BA)	Political Science (BSEd)
Law (BBA)	Political Science (MA)
Law (JD)	Professional Selling (BBA)
Life - Earth Science (BSEd)	Professional Writing (BA)
Limnology (MSL)	Psychology (BA)
Management (BBA)	Psychology (BS)
Marketing (BBA)	Public Administration (BBA)
Mathematics (BA)	Public Policy & Administration (MPPA)
Mathematics (BS)	Quantitative Business Analysis (BBA)
Mathematics (BSEd)	Reading (BSEd)
Mathematics (MS)	Real Estate (BBA)
Mathematics (PhD)	Recreation (BSEd)
Mechanical Engineering (BSE)	Regional / Urban Studies (BBA)
Medicine (BA)	Religion (BA)
Medicine (BS)	Religion (MA)
Ministry (DMin)	Religion (PhD)
Museum Studies (BA)	Risk Management and Insurance (BBA)
Museum Studies (BS)	Russian (BA)
Museum Studies (MA)	Science (BSEd)
Music (BA)	Slavic and East European Studies (BA)
Music Education (MM)	Social Studies (BSEd)
Music History & Literature (BM)	Social Work (BA)
Music History & Literature (MM)	Social Work (MSW)
Music Theory (MM)	Sociology (BA)
Neuroscience (BS)	Sociology (BSEd)
Neuroscience (MA)	Sociology (MA)
Neuroscience (PhD)	Spanish (BA)
Nursing (BSN)	Spanish (BSEd)
Nutrition Sciences (BA)	Spanish (MA)
Nutrition Sciences (BS)	Speech Communication (BA)
Nutrition Sciences (BSFCS)	Speech Communications (BSEd)
Operations Management (BBA)	Speech & Language Therapy (BSEd)
Optometry (BA)	Statistics (MA)
Optometry (BS)	Statistics (PhD)
Pedagogy (BM)	Studio Art (BA)
Performance (BFA)	Studio Art (BFA)
Performance (MM)	Taxation (MT)
Philosophy (BA)	Telecommunication (BA)
Philosophy (MA)	Theater Arts (BA)
Philosophy (PhD)	Theater Arts (BSEd)
Physical Science (BSEd)	Theater Arts (MA)
Physical Therapy (DScPT)	Theology (MDiv)
Physical Therapy (MPT)	Theory (BM)
Physics (BA)	University Scholars (BA)
Physics (BS)	

Faculty and Staff



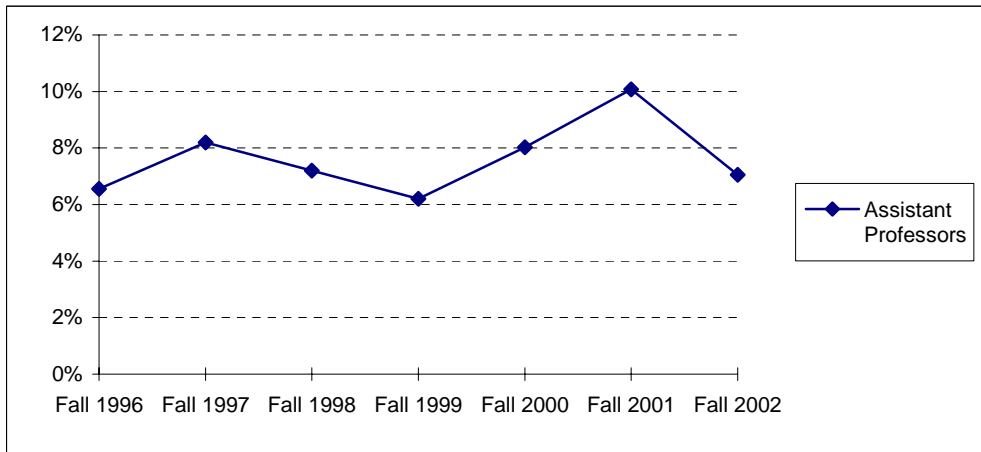
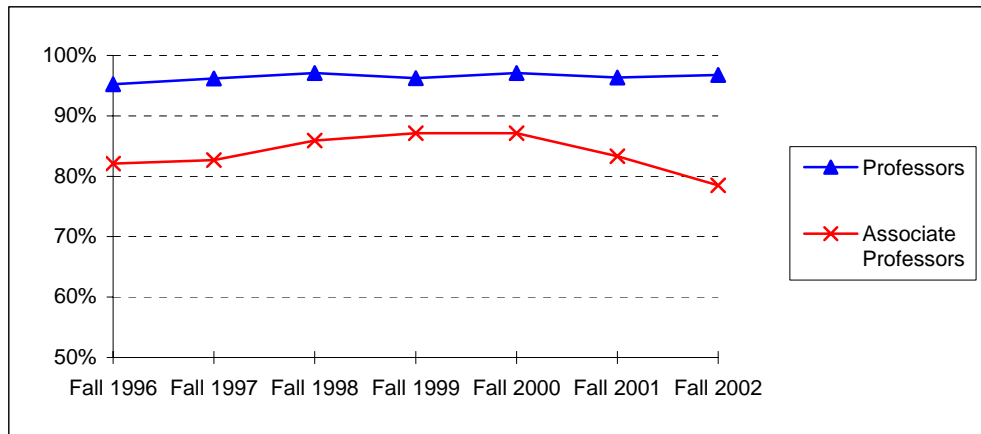
**Full-Time Faculty Positions (AAUP Definition)
Fall 1996 - Fall 2002**

Rank	Fall 1996		Fall 1997		Fall 1998		Fall 1999		Fall 2000		Fall 2001		Fall 2002	
	Male	Female	Male	Female	Male	Female	Male	Female	Male	Female	Male	Female	Male	Female
Professors:														
Number	198	33	201	34	205	35	203	35	203	39	211	34	213	33
Tenured	190	30	194	32	198	35	195	34	197	38	202	34	205	33
Associate Prof.:														
Number	82	41	84	43	89	46	91	49	86	46	89	49	96	48
Tenured	67	34	68	37	78	38	79	43	74	41	71	44	71	42
Assistant Prof:														
Number	71	51	67	55	73	52	77	52	84	53	85	54	93	63
Tenured	3	5	3	7	2	7	2	6	5	6	6	8	3	8
Instructors:														
Number	0	2	0	2	0	1	0	1	0	3	0	3	0	1
Tenured	0	1	0	1	0	1	0	1	0	1	0	1	0	0
Lecturers:														
Number	55	73	47	73	50	78	51	91	53	95	63	109	80	129
Total Number	406	200	399	207	417	212	422	228	426	236	448	249	482	274
Total Tenured	260	70	265	77	278	81	276	84	276	86	279	87	279	83

**Highest Degree Earned by Full-Time Faculty
Fall 1996 - Fall 2002**

	Fall 1996	Fall 1997	Fall 1998	Fall 1999	Fall 2000	Fall 2001	Fall 2002
Associate's	0	0	0	0	0	0	1
Bachelor's	0	1	1	0	0	1	1
Master's	135	138	145	150	159	165	199
Doctoral	449	448	463	478	480	507	550
Professional	22	19	20	22	23	24	26
Total	606	606	629	650	662	697	777

**Percentage of Full-Time Faculty with Tenure (AAUP Definition)
Fall 1996 - Fall 2002**



	Fall 1996	Fall 1997	Fall 1998	Fall 1999	Fall 2000	Fall 2001	Fall 2002
Professors	95.2%	96.2%	97.1%	96.2%	97.1%	96.3%	96.7%
Associate Professors	82.1%	82.7%	85.9%	87.1%	87.1%	83.3%	78.5%
Assistant Professors	6.6%	8.2%	7.2%	6.2%	8.0%	10.1%	7.1%
Instructors	50.0%	50.0%	100.0%	100.0%	33.3%	33.3%	0.0%
All Faculty	54.5%	56.4%	57.1%	55.4%	54.7%	52.5%	47.9%

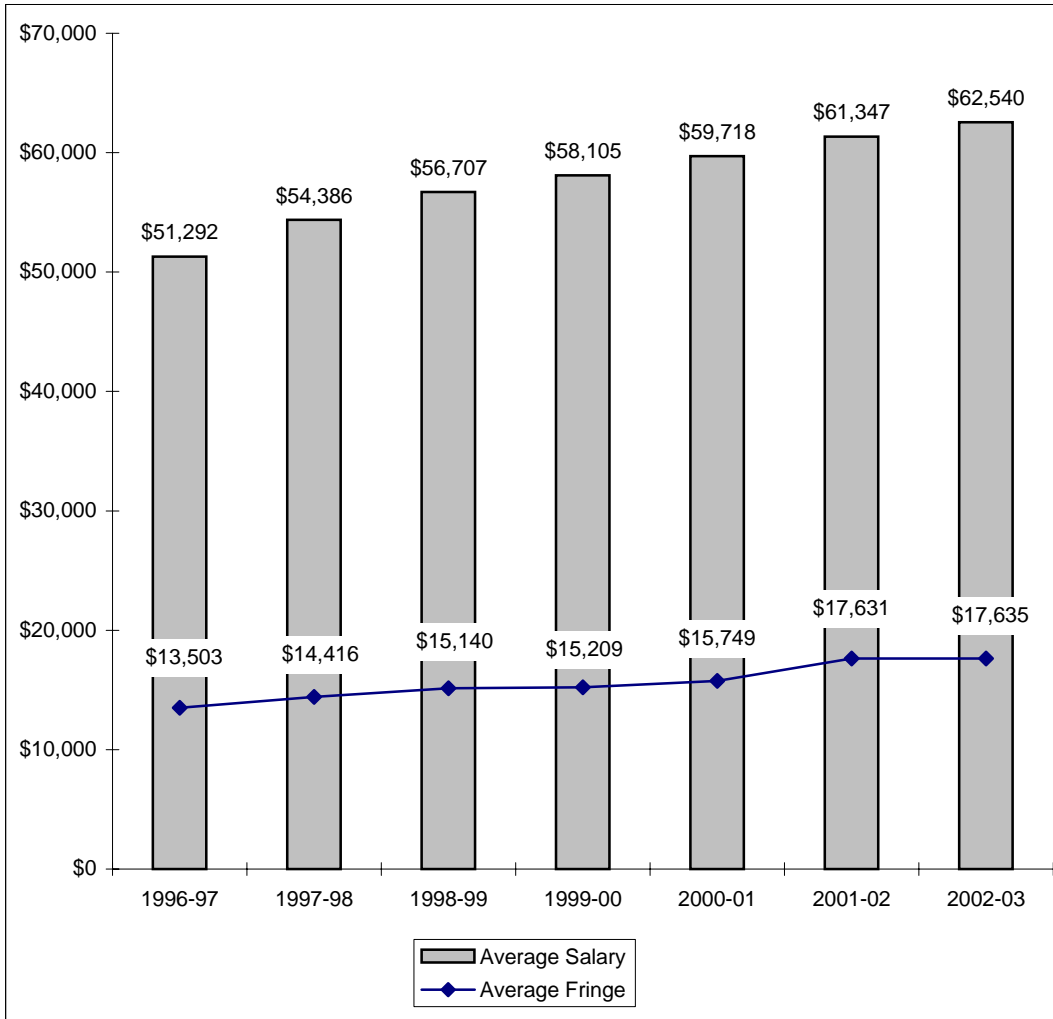
**Average Salaries of Full-Time Instructional Faculty
on Academic Year Contracts (AAUP Definition)
Fall 1996 - Fall 2002**

Rank	Fall 1996		Fall 1997		Fall 1998		Fall 1999	
	Number in Rank	Average Salary	Number in Rank	Average Salary	Number in Rank	Average Salary	Number in Rank	Average Salary
Professor	231	\$67,094	235	\$70,565	240	\$73,937	238	\$77,289
Associate Professor	123	\$51,427	127	\$54,382	135	\$56,977	140	\$58,365
Assistant Professor	122	\$41,259	122	\$42,459	125	\$44,193	129	\$45,423
Instructor	2	*	2	*	1	*	1	*
Lecturer	128	\$32,473	120	\$35,127	128	\$36,420	142	\$37,309
All Ranks	606	\$51,292	606	\$54,386	629	\$56,707	650	\$58,105
Average Fringe		\$13,503		\$14,416		\$15,140		\$15,209
Fringe as a Percentage of Average Salary		26.3%		26.5%		26.7%		26.2%
Percentage Increase in Average Salary for Continuing Faculty		3.3%		6.7%		4.6%		4.3%

Rank	Fall 2000		Fall 2001		Fall 2002	
	Number in Rank	Average Salary	Number in Rank	Average Salary	Number in Rank	Average Salary
Professor	242	\$79,299	245	\$81,747	246	\$83,562
Associate Professor	132	\$60,511	138	\$62,697	144	\$65,136
Assistant Professor	137	\$47,530	139	\$50,046	156	\$55,208
Instructor	3	*	3	*	1	*
Senior Lecturer			64	\$45,227	61	\$46,482
Lecturer	148	\$38,525	108	\$37,884	148	\$39,478
All Ranks	662	\$59,718	697	\$61,347	756	\$62,540
Average Fringe		\$15,749		\$17,631		\$17,635
Fringe as a Percentage of Average Salary		26.4%		28.7%		28.2%
Percentage Increase in Average Salary for Continuing Faculty		4.1%		5.0%		4.9%

*Data not displayed for five or fewer faculty.

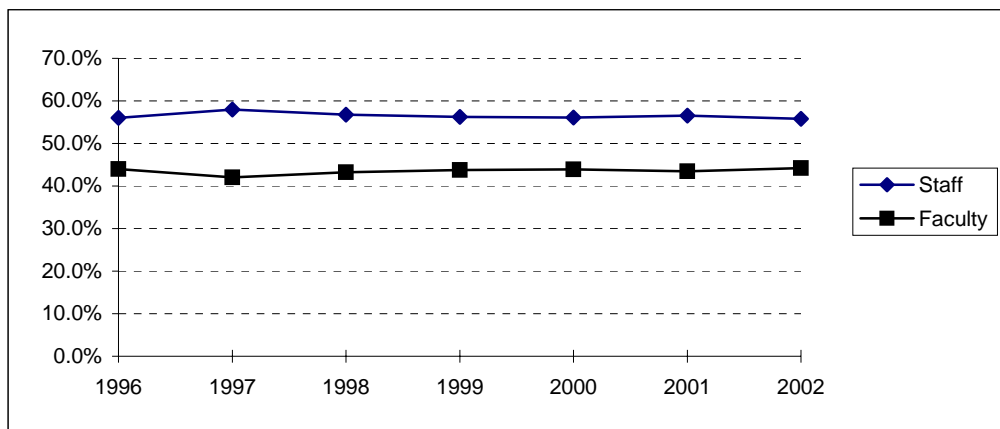
**Average Compensation of Full-Time Instructional Faculty
on Academic Year Contracts
1996-97 through 2002-03**



**Institutional Staff
Fall 1996 - Fall 2002**

Fall	1996	1997	1998	1999	2000	2001	2002
Faculty:							
Full-Time	632	633	655	676	689	725	806
Part-Time	58	49	86	114	133	116	110
Executive/Administrative:							
Full-Time	84	135	142	150	155	172	173
Part-Time	2	1	1	1	0	0	1
Other Professional:							
Full-Time	294	270	279	299	325	352	421
Part-Time	18	18	15	17	13	14	14
Technical/Paraprofessional:							
Full-Time	24	34	38	44	46	44	33
Part-Time	3	2	2	2	4	3	4
Clerical/Secretarial:							
Full-Time	324	339	351	361	372	392	399
Part-Time	53	61	61	64	58	44	39
Skilled Crafts:							
Full-Time	10	5	5	6	6	4	7
Part-Time	1	1	1	2	2	1	0
Service/Maintenance:							
Full-Time	53	60	62	60	63	61	57
Part-Time	13	14	15	9	7	6	7
Total:							
Full-Time	1421	1476	1532	1596	1656	1750	1896
Part-Time	148	146	181	209	217	184	175
Grand Total	1569	1622	1713	1805	1873	1934	2071

**Percentage of Institutional Staff
Fall 1996 - Fall 2002**



Fall	1996	1997	1998	1999	2000	2001	2002
Staff	56.0%	58.0%	56.7%	56.2%	56.1%	56.5%	55.8%
Faculty	44.0%	42.0%	43.3%	43.8%	43.9%	43.5%	44.2%

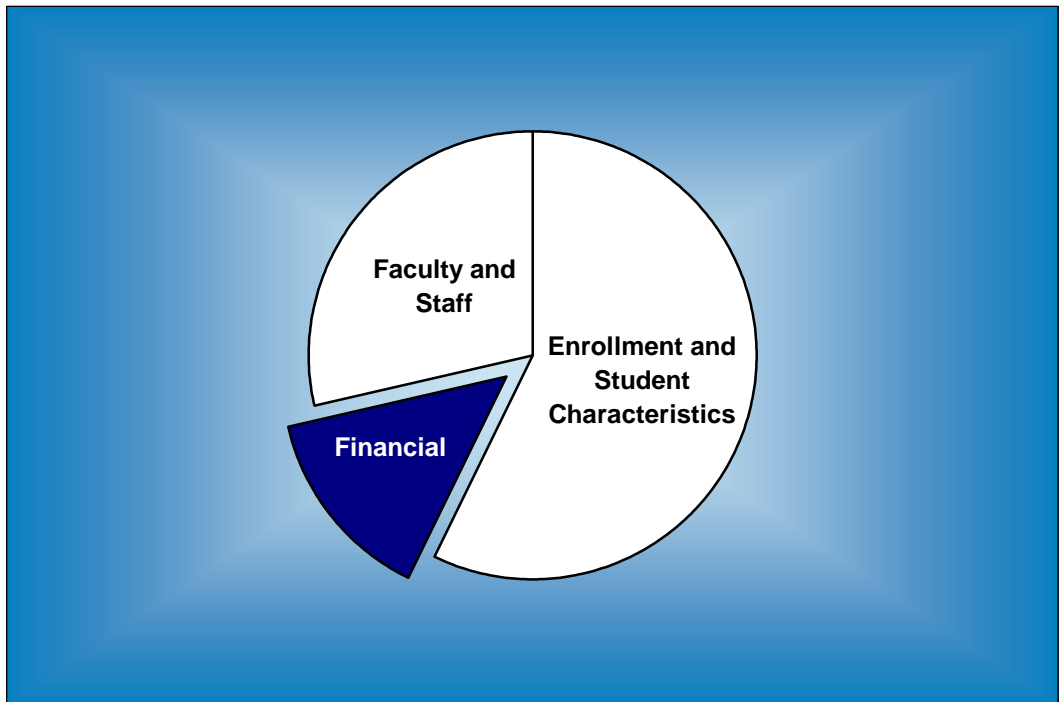
**Full-Time Faculty by Religious Affiliation
Fall 1996 - Fall 2002**

Fall	1996	1997	1998	1999	2000	2001	2002
Assembly of God	1	1	1	1	1	1	1
Baptist	302	294	307	315	315	331	381
Catholic	47	46	51	45	51	48	61
Church of Christ	12	16	16	15	16	16	21
Disciples of Christ	16	16	16	13	11	13	14
Episcopalian	40	45	47	49	45	47	51
Lutheran	38	34	35	38	38	40	41
Methodist	71	71	73	70	71	78	81
Non-/Inter-Denominational	9	10	11	11	16	16	17
Presbyterian	40	40	39	36	41	46	49
Other / Unspecified	30	33	33	57	57	61	60
Total	606	606	629	650	662	697	777

**Full-Time Staff by Religious Affiliation
Fall 1996 - Fall 2002**

Fall	1996	1997	1998	1999	2000	2001	2002
Assembly of God	4	6	5	4	6	7	7
Baptist	475	507	493	484	507	569	594
Catholic	63	73	76	84	86	100	110
Church of Christ	24	25	26	30	32	35	37
Disciples of Christ	21	19	17	20	17	18	20
Episcopalian	15	17	17	17	15	17	26
Lutheran	29	30	27	33	37	40	36
Methodist	80	83	90	96	99	109	110
Non-Denominational	9	13	13	20	24	20	42
Presbyterian	12	13	17	17	21	25	28
Other / Unspecified	56	57	96	115	123	85	80
Total	788	843	877	920	967	1025	1090

Financial



**Undergraduate Tuition and Other Semester Charges
1996-97 through 2002-03**

	1996-97	1997-98	1998-99	1999-00	2000-01	2001-02	2002-03
UG Tuition per Semester Hour (8)	\$269.00	\$288.00	\$308.00	\$329.00	\$355.00	\$379.00	\$405.00
Increase from Prior Year	4.3%	7.1%	6.9%	6.8%	7.9%	6.8%	6.9%
UG Flat Tuition Rate (7)							\$15,700
Application Fee	25.00	25.00	35.00	35.00	35.00	35.00	35.00
Applied Music Fee(1)	85.00	90.00	96.00	105.00	110.00	117.00	125.00
Change-of-Course Fee	20.00	20.00	20.00	20.00	20.00	20.00	20.00
Chapel-Forum Fee	10.00	10.00	15.00	15.00	25.00	25.00	25.00
Credit by Baylor Exam Fee	134.50	144.00	154.00	164.50	177.50	189.50	203.00
General Student Fee	335.00	385.00	427.00	490.00	524.00	590.00	625.00
Enrollment Deposit (2)	100.00	100.00	100.00	100.00	100.00	100.00	100.00
Lab/Course Fees (3)	25.00	25.00	25.00	25.00	25.00	25.00	25.00
Late Registration Fee (4)	20.00	20.00	20.00	20.00	20.00	20.00	20.00
Student Life Fee	1.00	1.00	1.00	1.00	1.00	1.00	0.00
Technology Fee			85.00	90.00	95.00	101.00	107.00
Vehicle Registration Fee (5)	90.00	95.00	120.00	145.00	170.00	175.00	175.00
Room	922.00	950.00	979.00	1,050.00	1,124.00	1,295.00	1,364.00
Increase from Prior Year	3.0%	3.0%	3.1%	7.3%	7.0%	15.2%	5.3%
Board (6)	1,113.00	1,170.00	1,205.00	1,240.00	1,278.00	1,349.00	1,493.00
Increase from Prior Year	2.6%	5.1%	3.0%	2.9%	3.1%	5.6%	10.7%

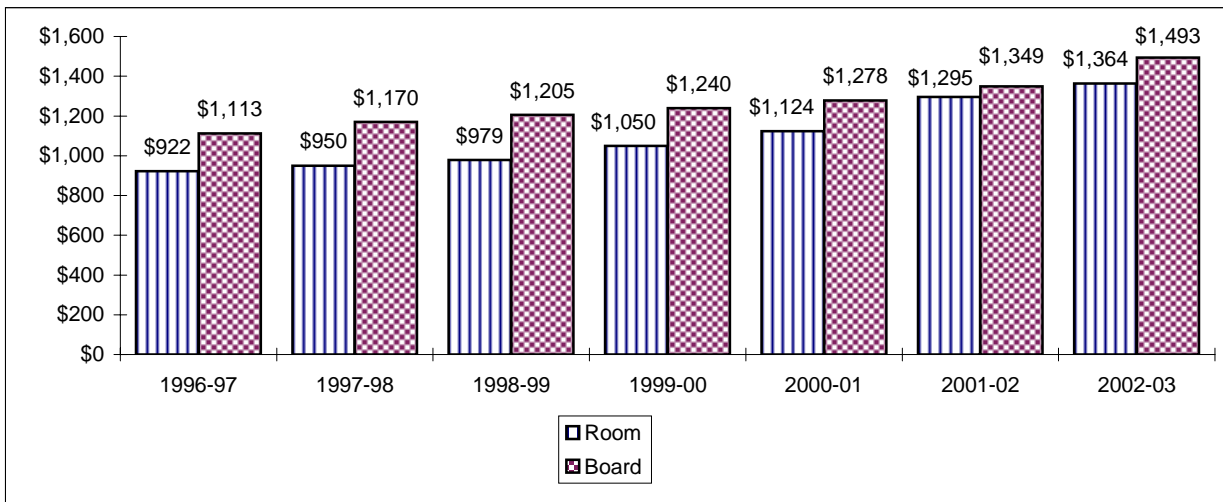
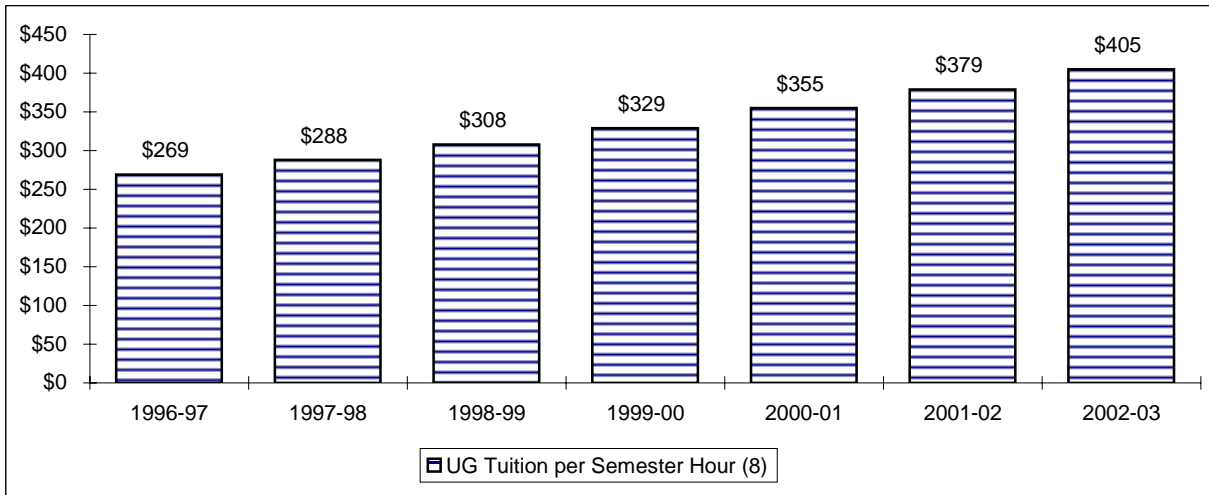
Increase in Semester Charges from 1996-97 to 2002-03:

Tuition per semester hour	50.6%
Room	47.9%
Board	34.1%

Notes:

- (1) Supplemental charge per semester for one 30-minute lesson per week.
- (2) In 1998, the General University Deposit became an Enrollment Deposit. The Enrollment Deposit is paid to assure enrollment place and is applied on the student's first semester bill.
- (3) Minimum lab fee is \$25; some courses may be higher.
- (4) Fee is graduated: \$20.00 first through third class days, \$30.00 fourth through ninth class days, \$50.00 tenth class day and after.
- (5) Annual automobile fee (September - August).
- (6) For 1995-96 through 2000-2001, Board rate reflects the twenty meal plan, per semester, not including sales tax. For 2001-02 and 2002-03, Board rate reflects the "Classic - 16 Plus Meal Plan" not including tax.
- (7) Beginning in 2002-03, a flat tuition rate was instituted for new undergraduate students taking 12 or more hours per semester (Fall and Spring).
- (8) Beginning in 2002-03, the tuition per semester hour rate is applicable for students who were enrolled at Baylor prior to June 1, 2002.

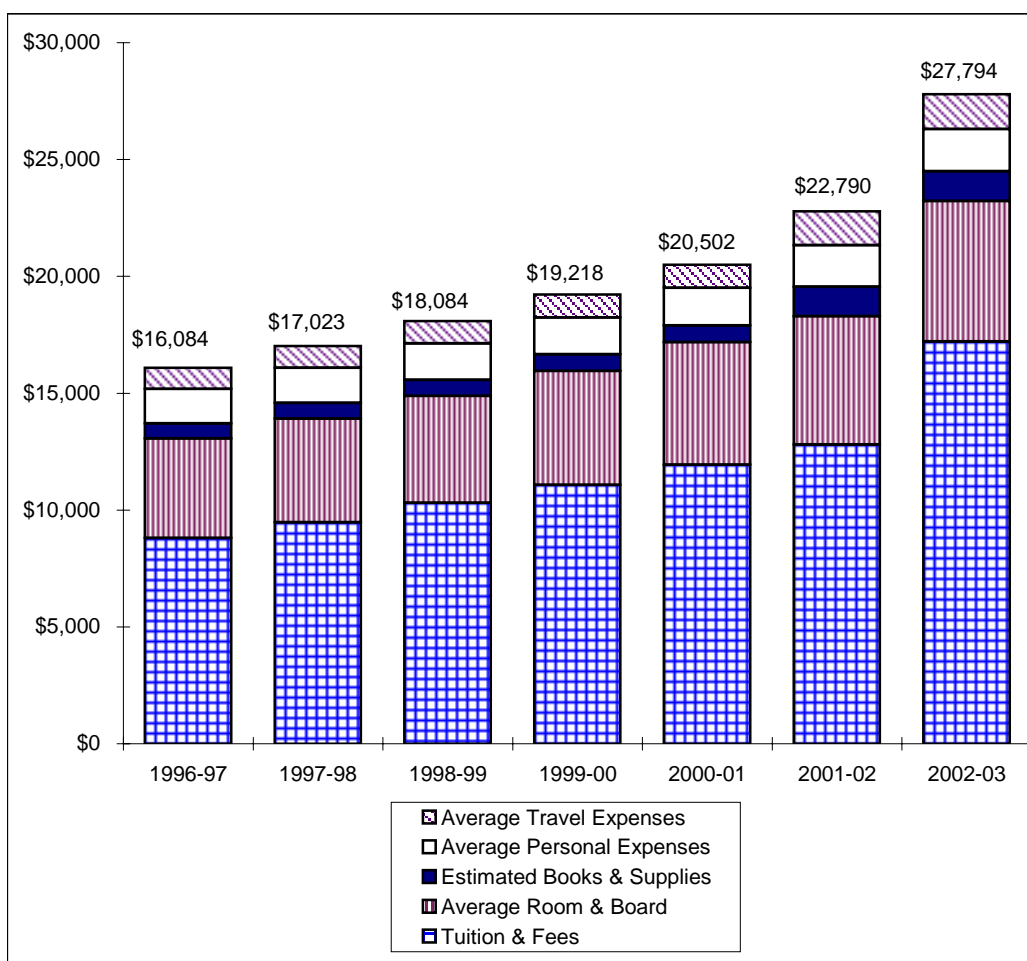
Tuition, Room and Board Charges 1996-97 through 2002-03



See notes on page 28.

Annual Undergraduate Student Cost Profile 1996-97 through 2002-03

	1996-97	1997-98	1998-99	1999-00	2000-01	2001-02	2002-03
Tuition & Fees	\$8,806	\$9,478	\$10,316	\$11,082	\$11,940	\$12,804	\$17,214
Average Room & Board	4,254	4,433	4,566	4,874	5,238	5,494	6,002
Estimated Books & Supplies	652	670	690	702	716	1,256	1,280
Average Personal Expenses	1,468	1,512	1,556	1,586	1,616	1,772	1,806
Average Travel Expenses	904	930	956	974	992	1,464	1,492
Average Total Cost	\$16,084	\$17,023	\$18,084	\$19,218	\$20,502	\$22,790	\$27,794
Increase from Prior Year	3.6%	5.8%	6.2%	6.3%	6.7%	11.2%	22.0%



Note: In 2002-03 a flat tuition rate of \$15,700 was instituted for new students taking 12 or more hours per semester (Fall and Spring).

**Operating Funds
1995-96 through 2001-02**

Sources of Revenues

	1995-96	1996-97	1997-98	1998-99	1999-00	2000-01	2001-02
Tuition & Fees	\$95,631,950	\$101,979,942	\$111,333,824	\$131,549,785	\$145,105,566	\$161,790,383	\$180,194,091
Gifts & Private Grants	3,674,822	4,609,984	6,248,707	8,244,782	6,926,099	10,081,101	6,107,120
BGCT Appropriation	3,686,271	3,928,739	4,039,046	3,994,879	4,078,147	4,022,186	3,822,637
Endowment Income	10,454,210	11,159,003	12,098,349	12,111,256	12,678,477	15,075,011	13,698,822
Investment Income	1,792,538	1,930,310	2,212,007	2,364,681	2,826,020	3,772,096	1,635,000
Other Sources	9,526,460	9,199,834	10,292,257	9,599,477	13,710,214	11,459,110	12,921,478
Auxiliary Enterprises	25,912,697	29,497,606	32,582,644	35,561,127	36,679,685	39,285,440	40,185,133
Total Revenues	\$150,678,948	\$162,305,418	\$178,806,834	\$203,425,987	\$222,004,208	\$245,485,327	\$258,564,281

Sources of Revenues as a Percentage of Total Revenues

	1995-96	1996-97	1997-98	1998-99	1999-00	1999-00	2001-02
Tuition & Fees	63.5%	62.8%	62.3%	64.6%	65.3%	66.0%	69.8%
Gifts & Private Grants	2.4%	2.8%	3.5%	4.1%	3.1%	4.1%	2.4%
BGCT Appropriation	2.4%	2.4%	2.3%	2.0%	1.8%	1.6%	1.5%
Endowment Income	7.0%	7.0%	6.8%	6.0%	5.7%	6.1%	5.3%
Investment Income	1.2%	1.2%	1.2%	1.2%	1.3%	1.5%	0.6%
Other Sources	6.3%	5.7%	5.8%	4.7%	6.2%	4.7%	5.0%
Auxiliary Enterprises	17.2%	18.2%	18.2%	17.5%	16.4%	15.9%	15.5%
Total Revenues	100.0%	100.0%	100.0%	100.0%	100.0%	100.0%	100.0%

**Operating Funds (Continued)
1995-96 through 2001-02**

Expenditures by Function

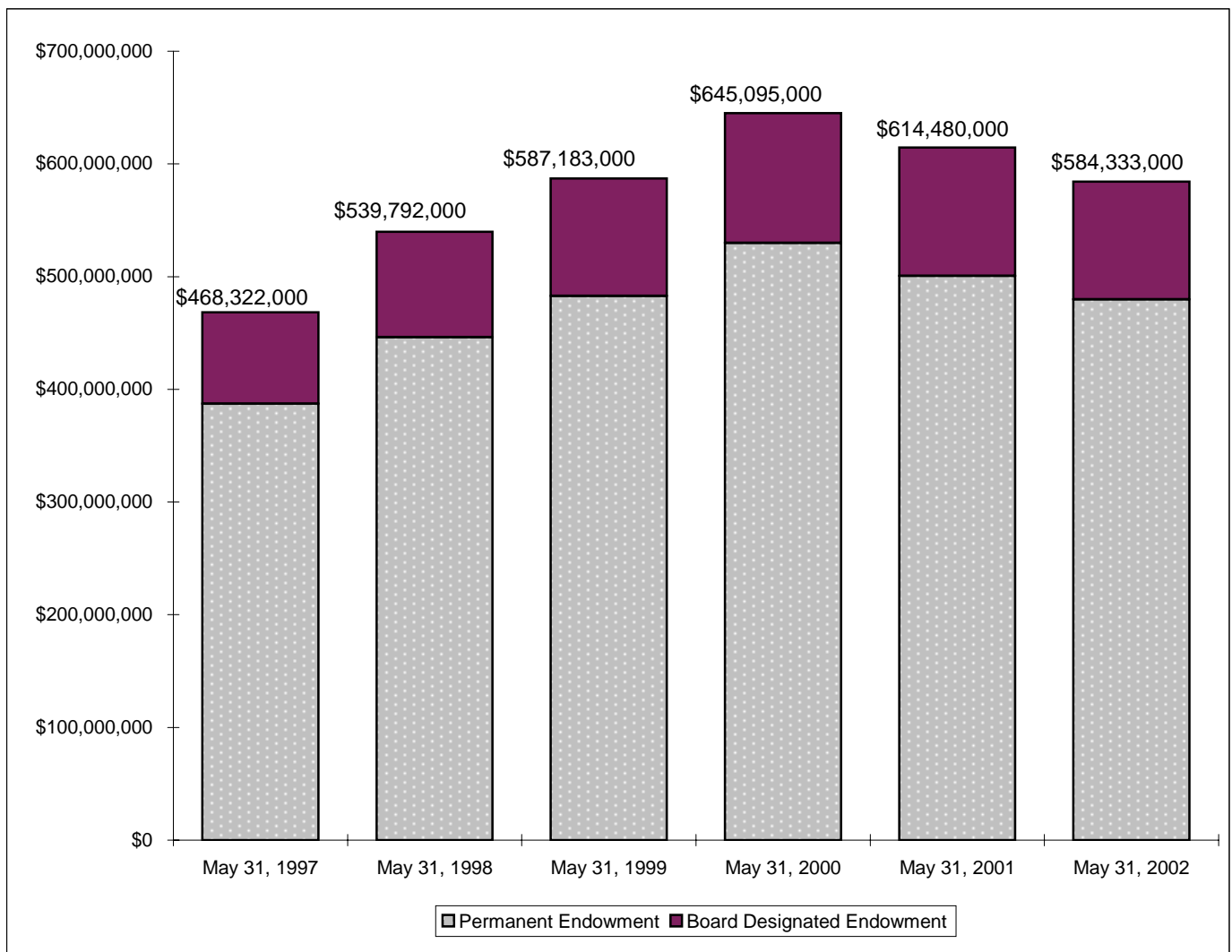
	1995-96	1996-97	1997-98	1998-99	1999-00	2000-01	2001-02
Instruction	\$63,714,510	\$64,887,596	\$69,394,793	\$73,484,863	\$78,132,224	\$82,621,971	\$92,355,519
Acad Support, Res. & Pub. Sr.	12,432,041	13,226,633	13,945,393	16,847,590	18,662,339	20,363,667	23,117,511
Student Services	10,129,853	10,569,350	9,473,902	9,152,085	11,165,359	11,798,452	12,849,698
Plant Operations & Maintenance	9,762,895	10,138,633	10,429,262	11,889,750	14,220,616	16,020,525	19,608,685
Institutional Support	14,519,229	17,944,285	18,169,021	23,709,606	26,511,017	28,859,740	35,095,190
Scholarships & Fellowships	10,275,992	11,606,819	12,954,165	15,630,383	18,955,785	21,932,892	27,598,589
Auxiliary Enterprises	24,031,521	26,926,149	30,842,634	35,375,307	37,884,043	42,264,498	45,428,872
Discretionary Transfers	5,795,124	6,984,749	13,572,228	17,318,040	16,453,711	21,600,154	2,497,935
Total Expenditures	150,661,165	162,284,214	178,781,398	203,407,624	221,985,094	245,461,899	258,551,999
Excess Revenues	\$17,783	\$21,204	\$25,436	\$18,363	\$19,114	\$23,428	\$12,282

**Expenditures by Function as a
Percentage of Total Expenditures**

	1995-96	1996-97	1997-98	1998-99	1999-00	2000-01	2001-02
Instruction	42.3%	40.0%	38.8%	36.1%	35.2%	33.7%	35.7%
Acad Support, Res. & Pub. Sr.	8.3%	8.2%	7.8%	8.3%	8.4%	8.3%	8.9%
Student Services	6.7%	6.5%	5.3%	4.5%	5.0%	4.8%	5.0%
Plant Operations & Maintenance	6.5%	6.2%	5.8%	5.8%	6.4%	6.5%	7.6%
Institutional Support	9.6%	11.1%	10.2%	11.7%	11.9%	11.8%	13.6%
Scholarships & Fellowships	6.8%	7.2%	7.2%	7.7%	8.5%	8.9%	10.7%
Auxiliary Enterprises	16.0%	16.6%	17.3%	17.4%	17.1%	17.2%	17.6%
Discretionary Transfers	3.8%	4.3%	7.6%	8.5%	7.4%	8.8%	1.0%
Total Expenditures	100.0%	100.0%	100.0%	100.0%	100.0%	100.0%	100.0%

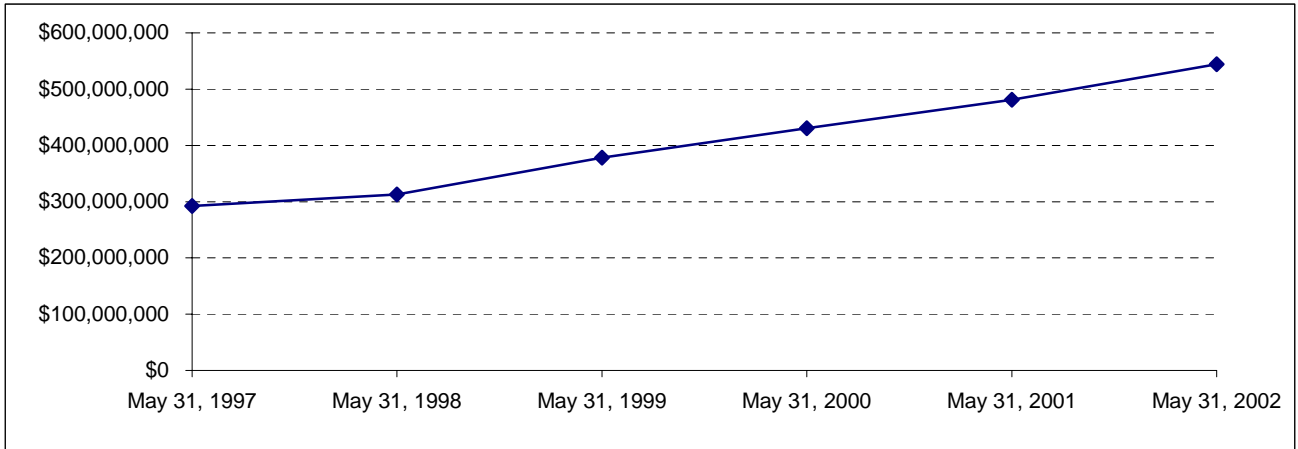
**Endowment Fund Balance - Market Value
May 31, 1997 through May 31, 2002**

	May 31, 1997	May 31, 1998	May 31, 1999	May 31, 2000	May 31, 2001	May 31, 2002
Permanent Endowment	\$387,211,000	\$446,150,000	\$482,807,000	\$529,979,000	\$500,739,000	\$479,728,000
Board Designated Endowment	81,111,000	93,642,000	104,376,000	115,116,000	113,741,000	104,605,000
Total Endowment	\$468,322,000	\$539,792,000	\$587,183,000	\$645,095,000	\$614,480,000	\$584,333,000
Permanent Endowment	82.7%	82.7%	82.2%	82.2%	81.5%	82.1%
Board Designated Endowment	17.3%	17.3%	17.8%	17.8%	18.5%	17.9%
Total Endowment	100.0%	100.0%	100.0%	100.0%	100.0%	100.0%



Property, Plant and Equipment*
May 31, 1997 through May 31, 2002

Property, Plant & Equipment	May 31, 1997	May 31, 1998	May 31, 1999	May 31, 2000	May 31, 2001	May 31, 2002
	\$292,070,000	\$312,970,000	\$378,059,000	\$430,619,000	\$480,878,000	\$544,541,000



*Does not reflect the impact of accumulated depreciation.

Assets
May 31, 1997 through May 31, 2002

	May 31, 1997	May 31, 1998	May 31, 1999	May 31, 2000	May 31, 2001	May 31, 2002
Net Assets	\$685,591,000	\$780,752,000	\$855,595,000	\$941,304,000	\$945,490,000	\$899,185,000
Total Assets	\$727,520,000	\$841,823,000	\$951,390,000	\$1,043,535,000	\$1,056,374,000	\$1,238,399,000

