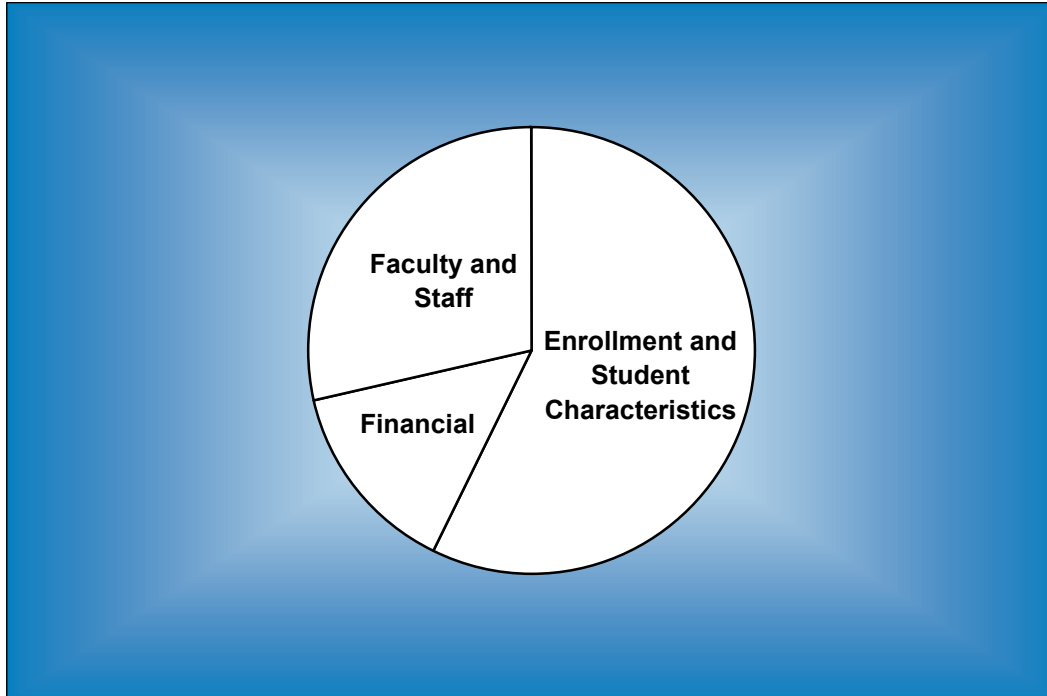


BAYLOR TRENDS



Fall 1997 - Fall 2003

Volume XV

Prepared by the Office of Information Management and Testing Services, March 2004

<http://www.baylor.edu/IMTS/>

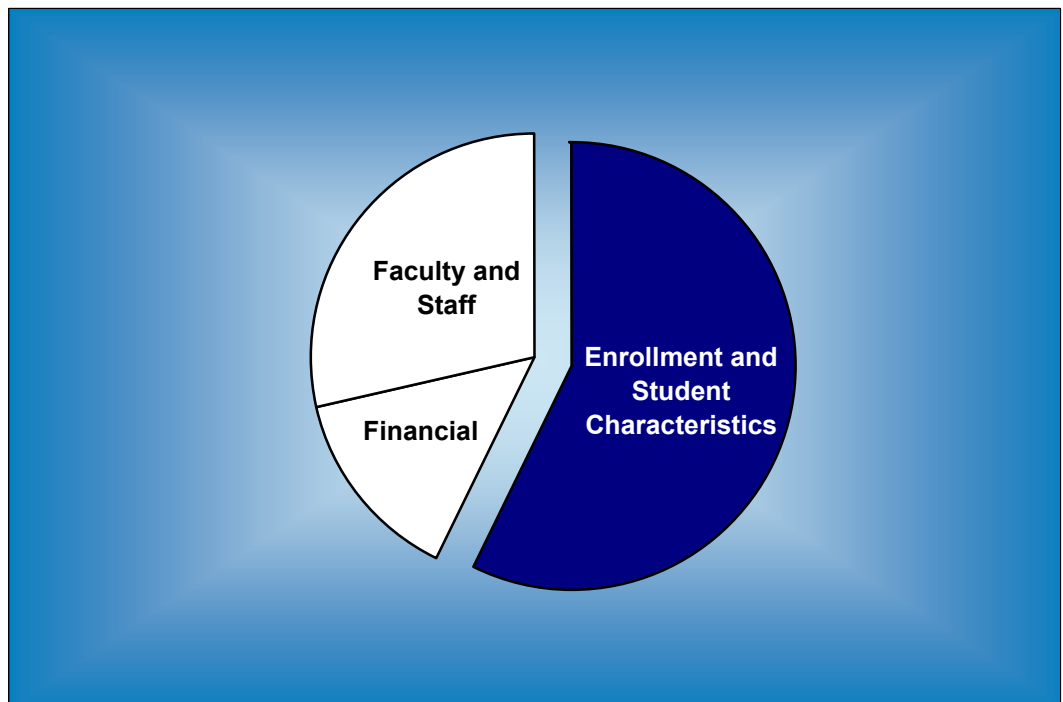
Table of Contents

	Page
ENROLLMENT AND STUDENT CHARACTERISTICS	
<i>New Freshman Applications and Enrollment</i>	1
<i>Transfer Applications and Enrollment</i>	1
<i>New Freshman Applications and Enrollment by Gender</i>	2
<i>New Freshman and Transfer Student Enrollment</i>	3
<i>Enrollment by Classification</i>	4
<i>Enrollment</i>	5
<i>Enrollment by Gender, Waco Campus</i>	6
<i>Enrollment by Religious Affiliation, Waco Campus</i>	7
<i>Baptist Percentage, Waco Campus</i>	7
<i>Enrollment by Racial/Ethnic Group</i>	8
<i>Racial/Ethnic Minority Percentage</i>	8
<i>Leading Texas Counties of Origin</i>	9
<i>Leading States of Origin</i>	9
<i>Percentage from Top Four Texas Counties</i>	10
<i>Percentage from Texas</i>	10
<i>Texas Enrollment by County</i>	11
<i>Enrollment by State</i>	12
<i>Countries Represented by Nonresident Aliens</i>	13
<i>Enrollment by Unit</i>	14
<i>Enrollment Percentage by Unit</i>	15
<i>Student Credit Hours by Unit, Waco Campus</i>	16
<i>Retention of First-Time Freshman Classes</i>	17
<i>Distribution of Degrees</i>	18
<i>Summary of Degrees Awarded</i>	19
<i>Degree Programs</i>	20
FACULTY AND STAFF	
<i>Full-Time Faculty Positions</i>	22
<i>Highest Degree Earned by Full-Time Faculty</i>	22
<i>Percentage of Full-Time Faculty with Tenure</i>	23
<i>Average Salaries of Full-Time Instructional Faculty on Academic Year Contracts</i>	24
<i>Average Compensation of Full-Time Instructional Faculty on Academic Year Contracts</i>	25
<i>Institutional Staff</i>	26
<i>Percentage of Institutional Staff</i>	26
<i>Full-Time Faculty by Religious Affiliation</i>	27
<i>Full-Time Staff by Religious Affiliation</i>	27

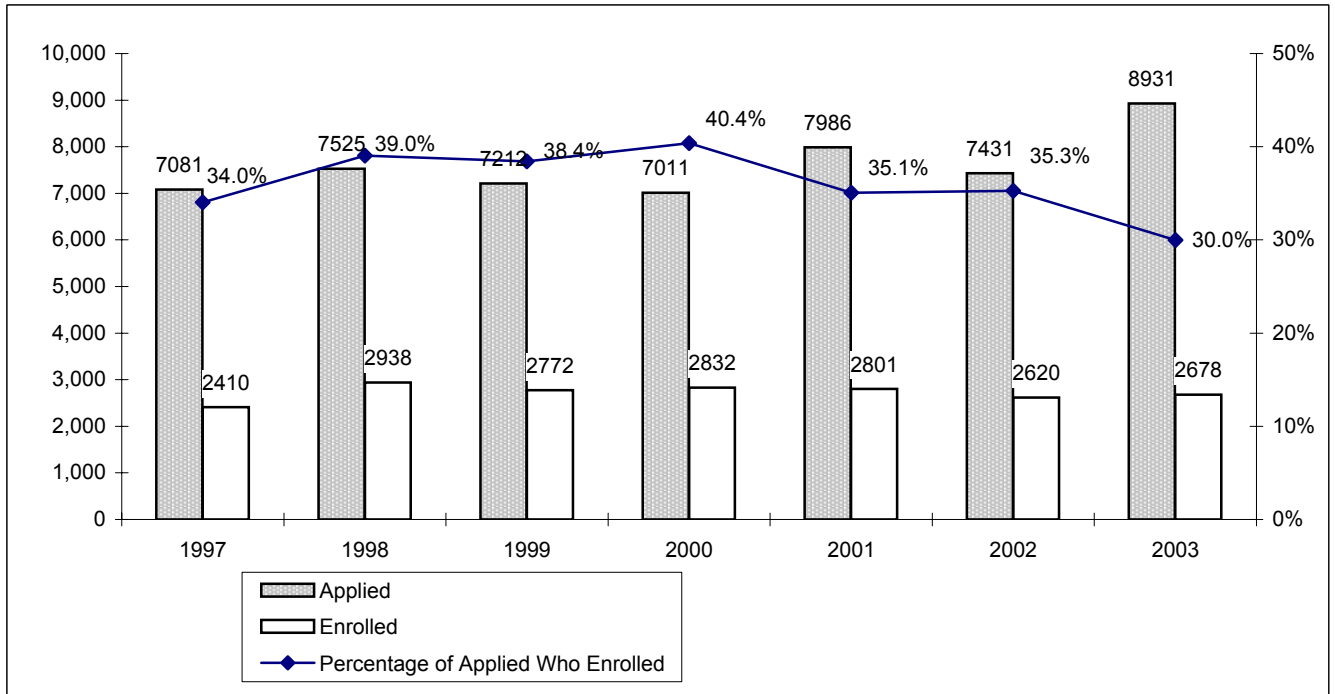
FINANCIAL

<i>Undergraduate Tuition and Other Semester Charges</i>	28
<i>Undergraduate Tuition, Room and Board Charges</i>	29
<i>Annual Undergraduate Student Cost Profile</i>	30
<i>Operating Funds:</i>	
<i>Sources of Revenues</i>	31
<i>Sources of Revenue as a Percentage of Total Revenues</i>	31
<i>Expenditures by Functions</i>	32
<i>Expenditures by Functions as a Percentage of Total Expenditures</i>	32
<i>Endowment Fund Balance - Market Value</i>	33
<i>Property, Plant and Equipment</i>	34
<i>Assets</i>	34

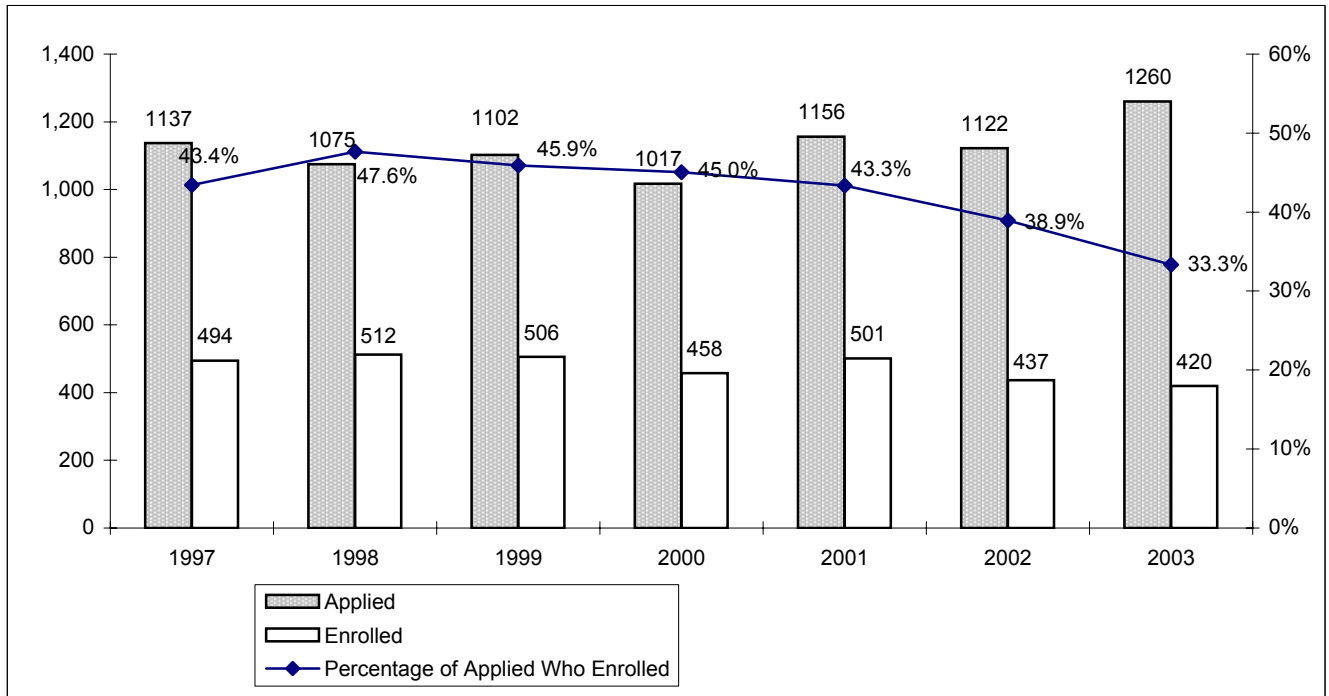
Enrollment and Student Characteristics



**New Freshman Applications and Enrollment*
Fall 1997 - Fall 2003**

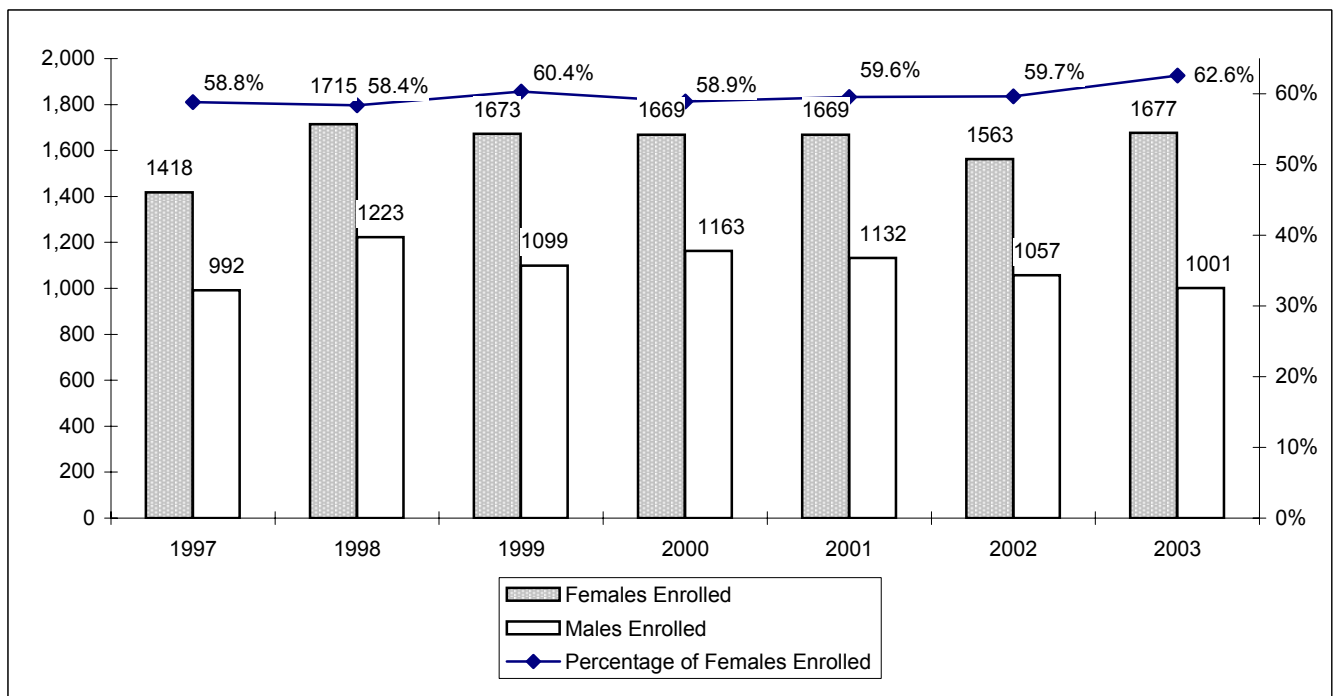
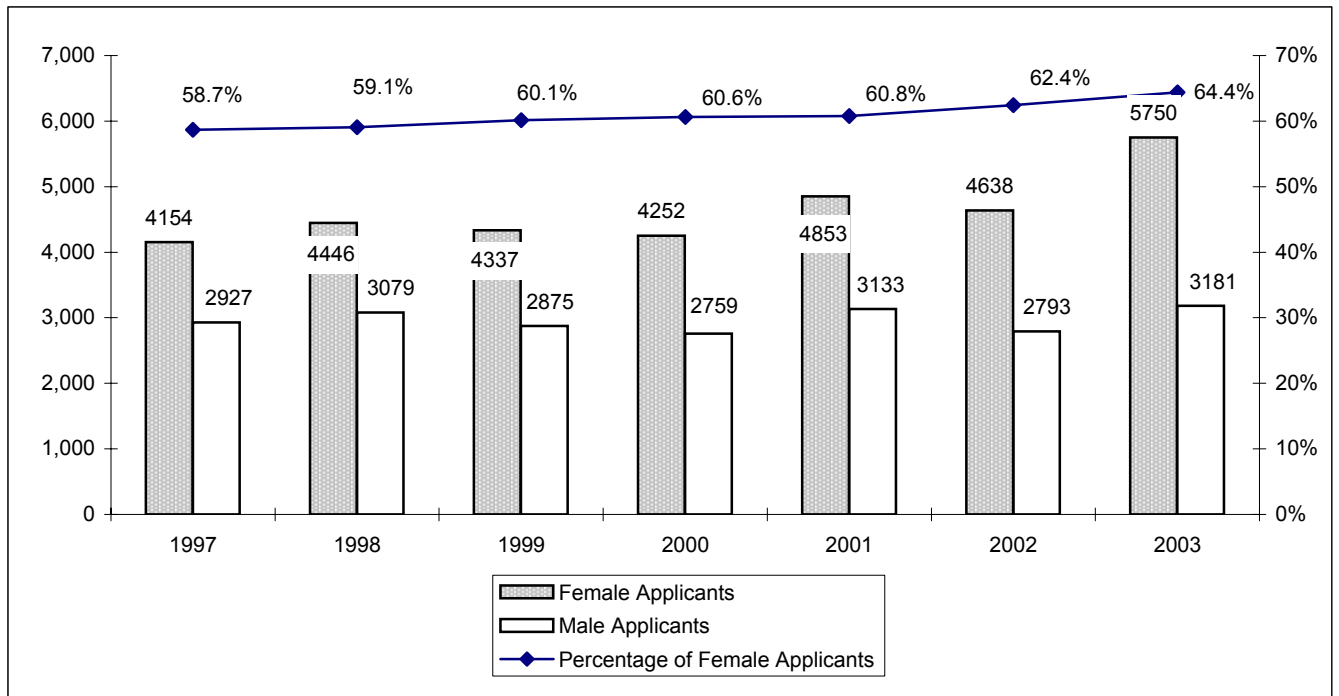


**Transfer Applications and Enrollment*
Fall 1997 - Fall 2003**



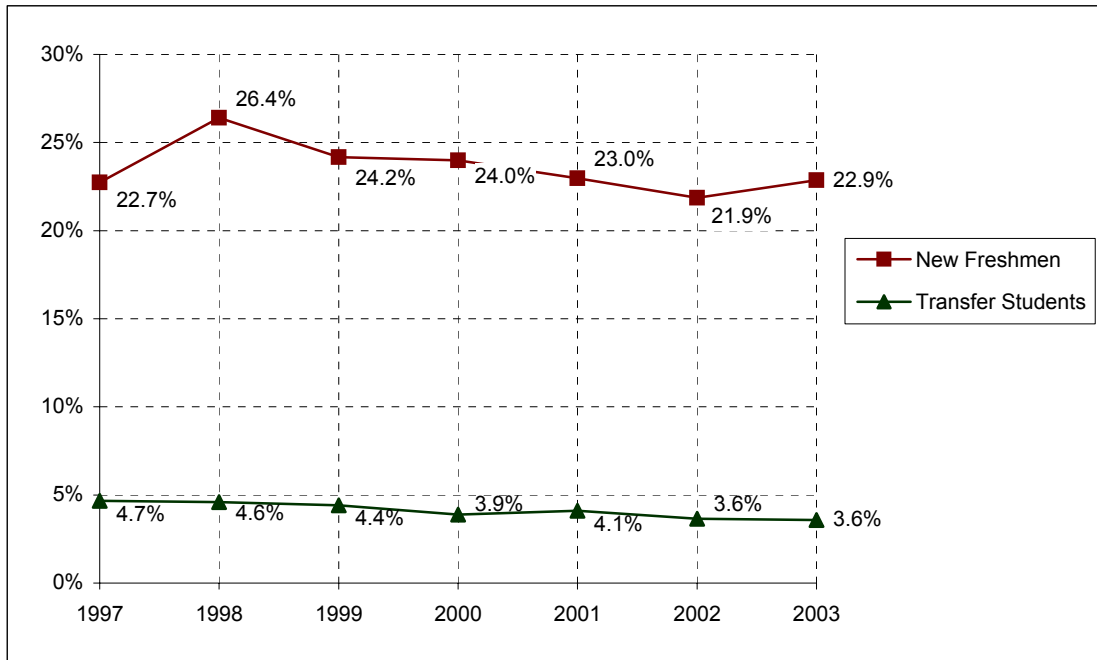
*Applications that were canceled and changed to future terms not included through 1998. Enrollment as of 12th class day.

**New Freshman Applications and Enrollment by Gender*
Fall 1997 - Fall 2003**



*Applications that were canceled and changed to future terms not included through 1998. Enrollment as of 12th class day.

**New Freshman and Transfer Student Enrollment
Fall 1997 - Fall 2003**



	Fall	1997	1998	1999	2000	2001	2002	2003
New Freshmen		2,410	2,938	2,772	2,832	2,801	2,620	2,678
New Transfer Students		494	512	506	458	501	437	420
Undergraduate Enrollment		10,597	11,124	11,472	11,806	12,190	11,987	11,712
% New Freshmen		22.7%	26.4%	24.2%	24.0%	23.0%	21.9%	22.9%
% New Transfer Students		4.7%	4.6%	4.4%	3.9%	4.1%	3.6%	3.6%

Notes:

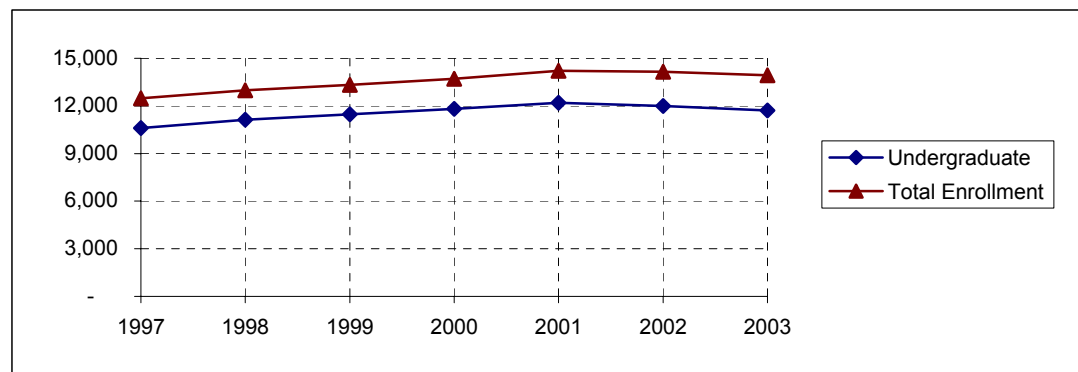
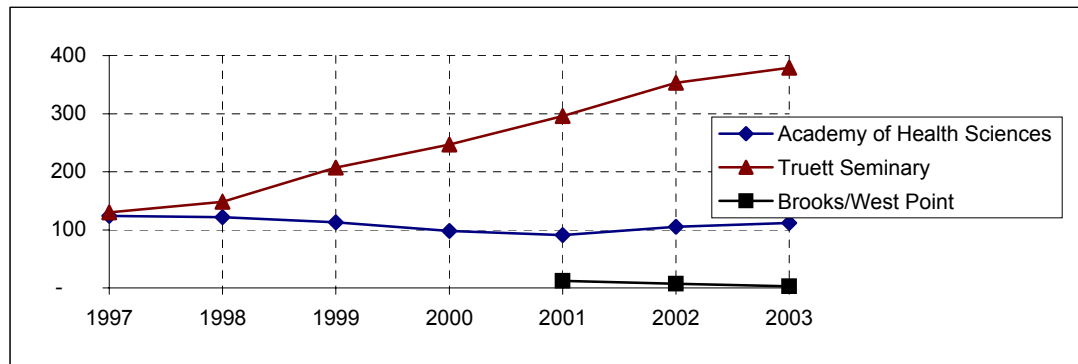
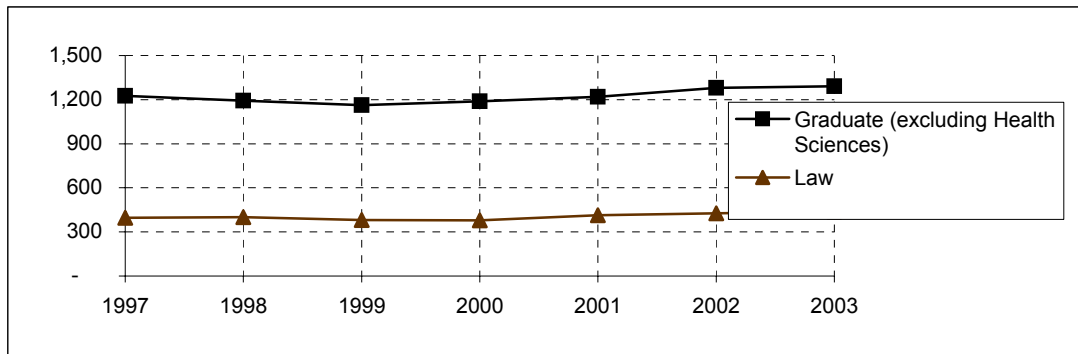
1. Freshmen who enter the University in the fall or preceding summer term are counted as "new freshmen." Similarly, transfer students entering in the fall or preceding summer term are counted as "transfer students" for the fall semester.

2. "Transfer students" refers to the entering summer/fall group of transfer students. For example, in Fall 2003 the 420 entering transfer students comprised 3.6% of the 11,712 undergraduates. However, for Fall 2003 the total number of enrolled undergraduates who had transferred into the University consisted of (a) transfers who entered in Fall 2003 and (b) students who transferred into the University in previous academic years. Generally, the total enrollment of students who had entered as transfer students is approximately 15% of the undergraduate student body.

**Enrollment by Classification
Fall 1997 - Fall 2003**

	Fall	1997	1998	1999	2000	2001	2002	2003
Freshman		3,070	3,566	3,534	3,678	3,613	3,309	3,382
Sophomore		2,458	2,333	2,619	2,565	2,686	2,679	2,506
Junior		2,139	2,314	2,244	2,516	2,565	2,595	2,462
Senior		2,774	2,779	2,956	2,916	3,194	3,297	3,262
Special		40	28	29	26	23	22	-
Postbaccalaureate		116	104	90	105	109	85	43
Nondegree		-	-	-	-	-	-	57
TOTAL UNDERGRADUATE		10,597	11,124	11,472	11,806	12,190	11,987	11,712
Master's		821	807	760	788	802	843	845
Doctoral		356	360	373	379	397	416	427
Graduate Transient/Nondegree		28	10	6	6	11	10	10
Special Graduate		20	15	18	8	-	-	-
Graduate Professional				5	8	9	12	9
TOTAL "WACO" GRADUATE		1,225	1,192	1,162	1,189	1,219	1,281	1,291
School of Law		396	401	380	379	413	426	440
Truett Seminary		130	148	207	247	296	353	379
Academy of Health Sciences		124	122	113	98	91	105	112
Brooks/West Point		-	-	-	-	12	7	3
TOTAL ENROLLMENT		12,472	12,987	13,334	13,719	14,221	14,159	13,937

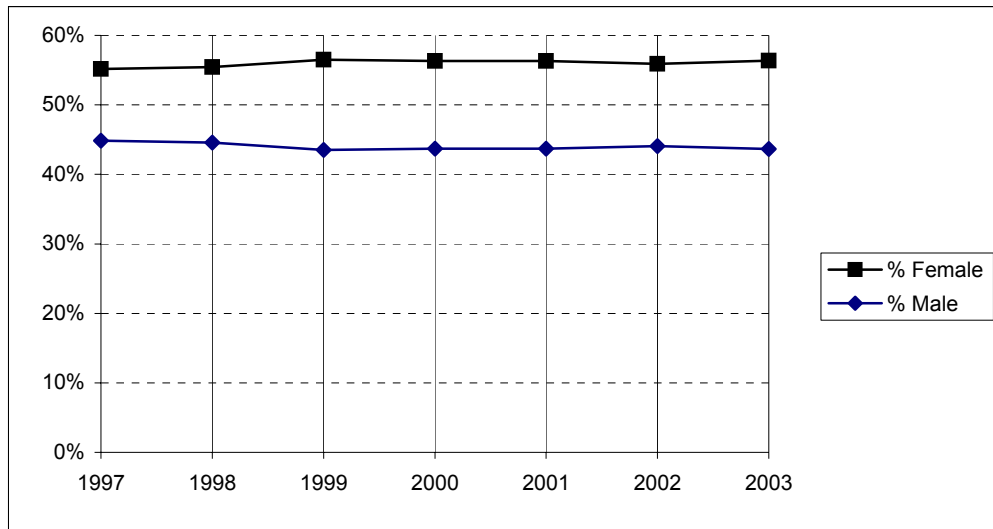
**Enrollment
Fall 1997 - Fall 2003**



Fall	1997	1998	1999	2000	2001	2002	2003
Undergraduate	10,597	11,124	11,472	11,806	12,190	11,987	11,712
Graduate (excluding Health Sciences)	1,225	1,192	1,162	1,189	1,219	1,281	1,291
Law	396	401	380	379	413	426	440
Truett Seminary	130	148	207	247	296	353	379
SUBTOTAL	12,348	12,865	13,221	13,621	14,118	14,047	13,822
Academy of Health Sciences	124	122	113	98	91	105	112
Brooks/West Point					12	7	3
TOTAL ENROLLMENT	12,472	12,987	13,334	13,719	14,221	14,159	13,937

Source: IMTS.

**Enrollment by Gender
(Excluding Health Sciences)
Fall 1997 - Fall 2003**

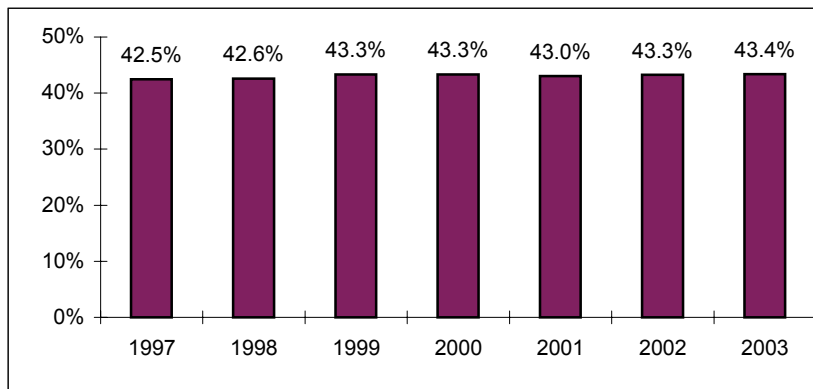


	Fall	1997	1998	1999	2000	2001	2002	2003
Female		6,809	7,131	7,467	7,670	7,950	7,854	7,790
Male		5,539	5,734	5,754	5,951	6,168	6,193	6,032
Total (excluding Health Sciences)		12,348	12,865	13,221	13,621	14,118	14,047	13,822
% Female		55.1%	55.4%	56.5%	56.3%	56.3%	55.9%	56.4%
% Male		44.9%	44.6%	43.5%	43.7%	43.7%	44.1%	43.6%

**Enrollment by Religious Affiliation (Excluding Health Sciences)
Fall 1997 - Fall 2003**

	Fall	1997	1998	1999	2000	2001	2002	2003
African Methodist Episcopal		-	-	-	-	-	-	1
Assembly of God		148	149	153	135	135	124	125
Baptist		5,247	5,475	5,727	5,903	6,076	6,076	5,994
Buddhist		66	70	72	70	77	71	60
Catholic		1,544	1,590	1,619	1,674	1,694	1,659	1,591
Christian Church		-	-	-	-	-	-	16
Christian Scientist		6	8	5	2	10	13	12
Church of Christ		243	260	254	287	279	283	253
Church of God		18	25	19	19	25	21	29
Church of the Nazarene		30	29	34	27	28	25	33
Congregational		14	14	16	16	23	23	21
Disciples of Christ		83	81	89	88	73	70	76
Eastern Orthodox		45	44	27	29	31	32	35
Episcopalian		271	271	302	310	307	294	249
Evangelical Free Church		-	-	-	-	-	-	3
Four Square Gospel		11	9	7	10	9	10	11
Greek Orthodox		-	-	-	-	-	-	4
Hindu		75	67	77	83	88	85	89
Independent Bible Church		-	-	-	-	-	-	1
Interdenominational		403	425	429	466	460	477	380
Jehovah's Witness		9	9	14	12	11	10	12
Judaism		10	8	11	9	17	14	22
Latter Day Saints (Mormon)		19	22	19	21	19	23	23
Lutheran		346	383	398	396	386	388	354
Mennonite		3	5	7	7	5	6	7
Methodist		1,190	1,168	1,163	1,203	1,251	1,280	1,219
Missionary Alliance		-	-	-	-	-	-	1
Moslem (Islam, Muslim)		56	58	77	86	100	109	109
Non-Denominational					102	251	270	567
Pentecostal		72	67	80	88	106	115	107
Presbyterian		528	532	518	552	571	534	536
Protestant		-	-	-	-	-	-	3
Seventh Day Adventist		-	-	-	-	-	-	2
Society of Friends (Quakers)		6	7	5	4	4	3	1
Unitarian		8	6	8	9	8	6	7
United Brethren		6	6	8	6	4	4	3
Other/Not Specified		1,891	2,077	2,083	2,007	2,070	2,022	1,866
TOTAL RELIGION		12,348	12,865	13,221	13,621	14,118	14,047	13,822

**Baptist Percentage (Excluding Health Sciences)
Fall 1997 - Fall 2003**



**Enrollment by Racial / Ethnic Group*
Fall 1997 - Fall 2003**

A.

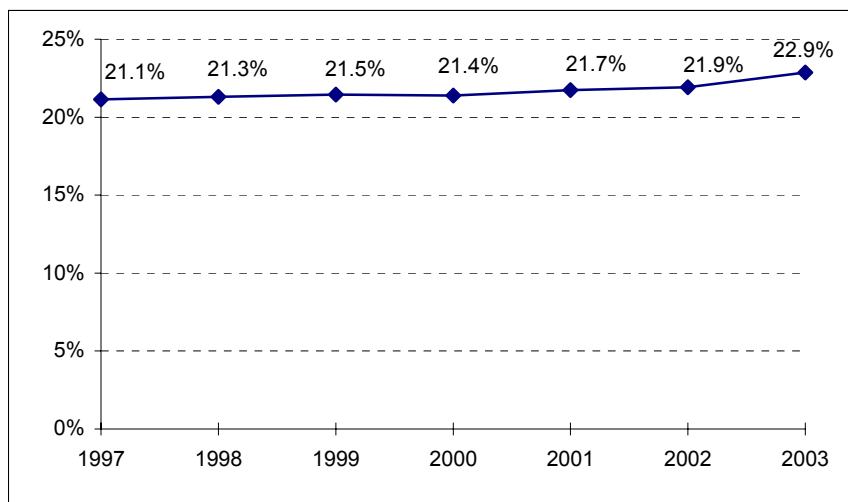
	Fall	1997	1998	1999	2000	2001	2002	2003
African American/Black		685	726	751	750	774	771	862
American Indian/Alaskan Native		64	74	65	64	63	75	83
Asian/Pacific Islander		793	809	847	876	903	883	865
Hispanic		917	941	959	967	1,051	1,078	1,077
White		9,717	9,995	10,278	10,671	11,033	10,919	10,541
Other		178	216	239	276	301	296	300
Not Specified		118	226	195	115	96	137	209
Total		12,472	12,987	13,334	13,719	14,221	14,159	13,937

B.

	Fall	1997	1998	1999	2000	2001	2002	2003
African American/Black		675	713	731	733	753	744	835
American Indian/Alaskan Native		63	73	64	64	63	75	82
Asian/Pacific Islander		635	636	648	664	669	660	666
Hispanic		880	918	936	939	1,017	1,045	1,040
White		9,656	9,934	10,225	10,612	10,967	10,854	10,476
Other		149	189	209	237	258	250	256
Not Specified		112	212	181	108	91	125	184
NONRESIDENT ALIEN		302	312	340	362	403	406	398
Total		12,472	12,987	13,334	13,719	14,221	14,159	13,937

*In Table B, nonresident aliens are partitioned as a group.

**Racial / Ethnic Minority Percentage
Fall 1997 - Fall 2003
(From Table A)**



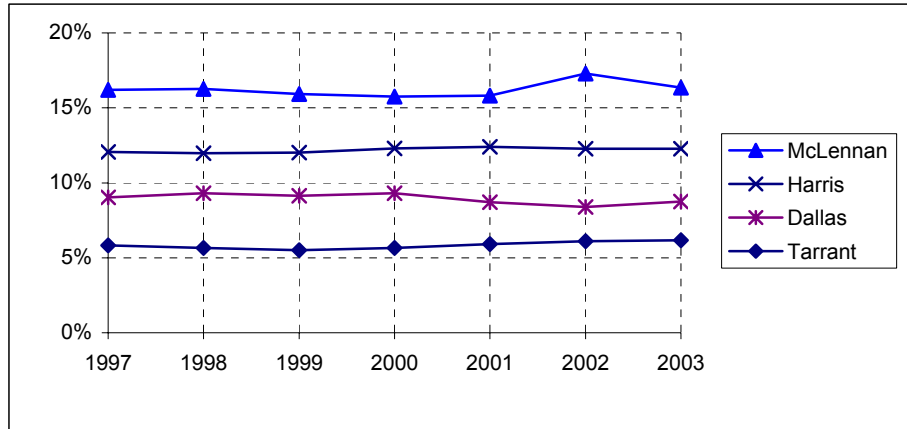
**Leading Texas Counties of Origin
Fall 1997 - Fall 2003**

Fall	1997	1998	1999	2000	2001	2002	2003
McLennan	2,020	2,112	2,124	2,161	2,248	2,448	2,279
Harris	1,505	1,556	1,601	1,687	1,763	1,738	1,711
Dallas	1,125	1,208	1,217	1,276	1,238	1,188	1,221
Tarrant	726	734	735	777	840	863	860
Collin	304	363	431	489	505	490	459
Bexar	508	570	528	532	521	475	438
Travis	238	267	283	304	326	331	372
Fort Bend	194	218	237	299	331	332	315
Montgomery	184	204	224	253	273	266	269
Bell	220	234	203	206	237	204	204
Denton	139	145	131	131	136	160	171
Williamson	110	115	133	125	138	154	171
Gregg	125	118	134	141	144	135	145
Smith	97	117	128	123	149	147	138
Brazoria	61	64	79	90	117	115	115
Galveston	106	98	105	119	117	119	102
El Paso	78	90	93	105	97	93	85
Hidalgo	87	107	94	81	79	85	83
Nueces	93	95	91	89	98	88	83
Taylor	48	71	89	94	102	100	79
Johnson	56	64	72	76	89	75	74
Rockwall	33	42	44	42	48	41	72
Jefferson	78	87	91	88	83	78	71

**Leading States of Origin
Fall 1997 - Fall 2003**

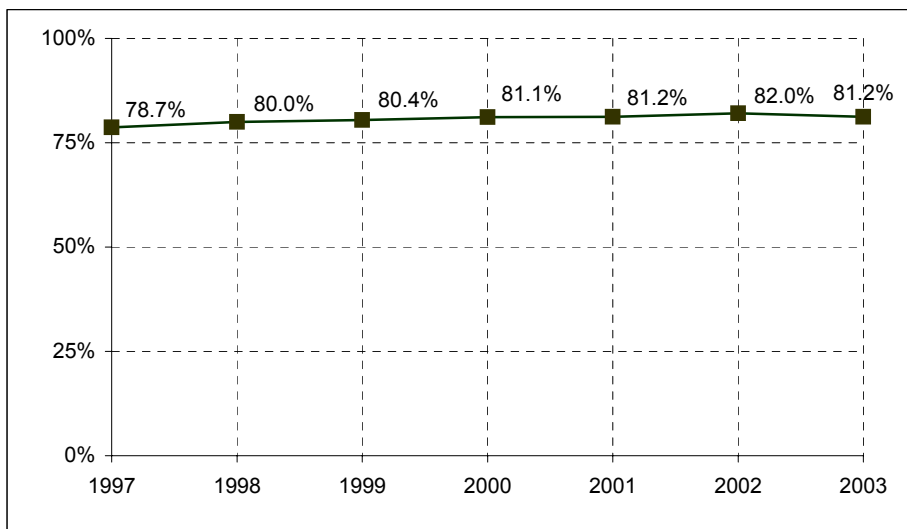
Fall	1997	1998	1999	2000	2001	2002	2003
Texas	9,811	10,386	10,726	11,128	11,553	11,613	11,316
California	278	273	268	250	246	227	238
Oklahoma	247	237	229	218	221	204	186
Louisiana	157	147	146	144	163	156	145
Arkansas	140	122	113	118	132	129	133
Colorado	149	135	134	134	138	137	129
Missouri	122	111	116	114	111	110	121
Illinois	79	78	73	80	88	87	103
Kansas	105	110	109	111	110	96	84
New Mexico	73	70	76	63	76	69	68
Tennessee	103	88	82	84	74	72	67

**Percentage From Top Four Texas Counties
Fall 1997 - Fall 2003**



Fall	1997	1998	1999	2000	2001	2002	2003
McLennan	16.2%	16.3%	15.9%	15.8%	15.8%	17.3%	16.4%
Harris	12.1%	12.0%	12.0%	12.3%	12.4%	12.3%	12.3%
Dallas	9.0%	9.3%	9.1%	9.3%	8.7%	8.4%	8.8%
Tarrant	5.8%	5.7%	5.5%	5.7%	5.9%	6.1%	6.2%

**Percentage From Texas
Fall 1997 - Fall 2003**

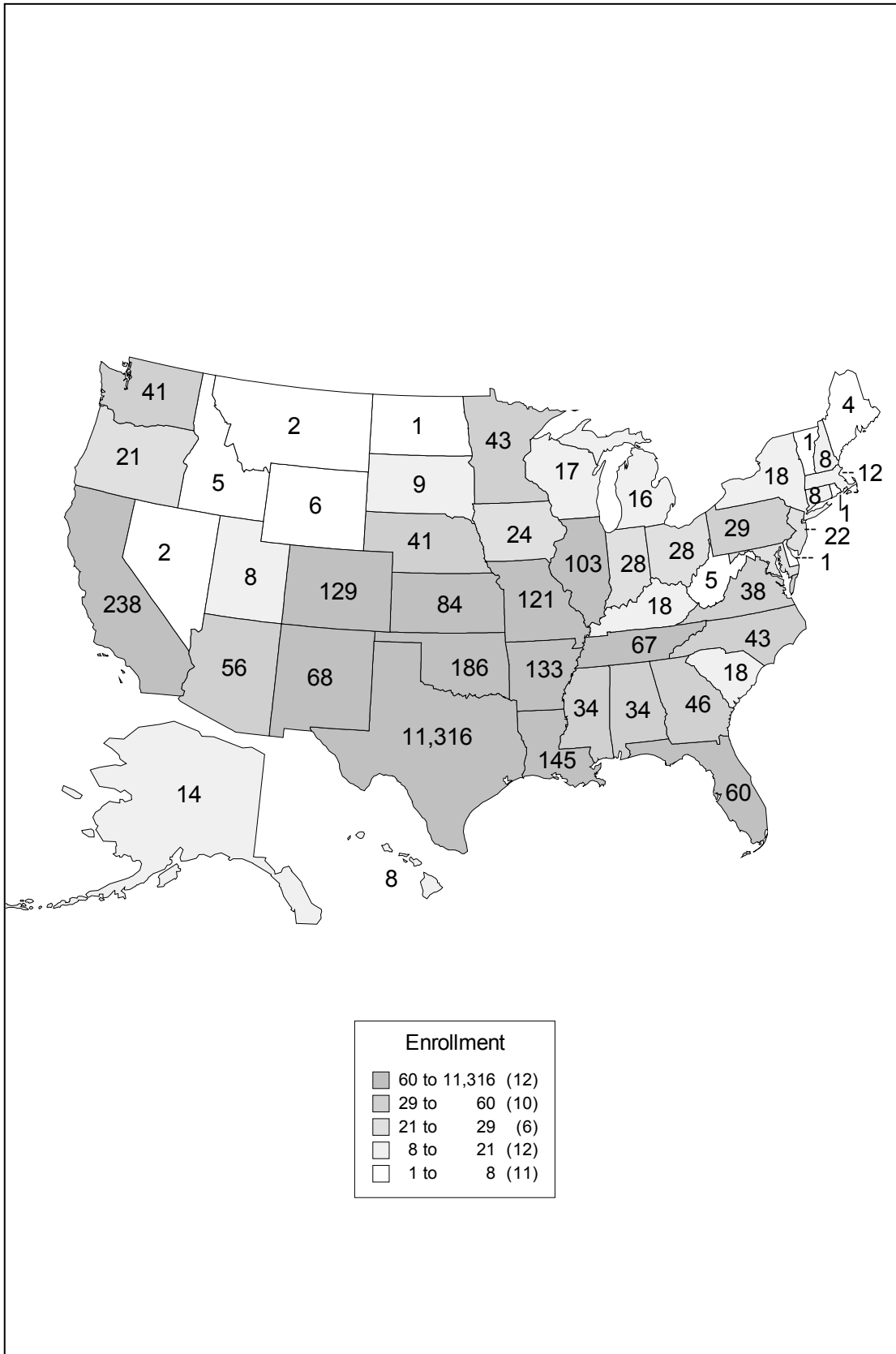


**Texas Enrollment by County
Fall 2003**

	n		n		n		n		n
Anderson	19	Crane	0	Hartley	0	Madison	4	San Patricio	13
Andrews	3	Crockett	0	Haskell	5	Marion	2	San Saba	2
Angelina	23	Crosby	0	Hays	25	Martin	0	Schleicher	0
Aransas	5	Culberson	1	Hemphill	1	Mason	0	Scurry	8
Archer	1	Dallam	1	Henderson	13	Matagorda	15	Shackelford	2
Armstrong	0	Dallas	1,221	Hidalgo	83	Maverick	13	Shelby	13
Atascosa	7	Dawson	2	Hill	39	Mc Culloch	0	Sherman	1
Austin	12	De Witt	4	Hockley	3	Mc Lennan	2,279	Smith	138
Bailey	3	Deaf Smith	1	Hood	14	Mc Mullen	1	Somervell	0
Bandera	5	Delta	2	Hopkins	26	Medina	3	Starr	5
Bastrop	8	Denton	171	Houston	6	Menard	1	Stephens	11
Baylor	0	Dickens	0	Howard	3	Midland	42	Sterling	0
Bee	7	Dimmit	4	Hudspeth	0	Milam	12	Stonewall	0
Bell	204	Donley	1	Hunt	17	Mills	0	Sutton	3
Bexar	438	Duval	0	Hutchinson	10	Mitchell	1	Swisher	2
Blanco	2	Eastland	4	Irion	0	Montague	3	Tarrant	860
Borden	0	Ector	27	Jack	1	Montgomery	269	Taylor	79
Bosque	24	Edwards	0	Jackson	5	Moore	1	Terrell	0
Bowie	29	El Paso	85	Jasper	9	Morris	10	Terry	1
Brazoria	115	Ellis	57	Jeff Davis	1	Motley	0	Throckmorton	0
Brazos	35	Erath	7	Jefferson	71	Nacogdoches	22	Titus	16
Brewster	0	Falls	20	Jim Hogg	0	Navarro	21	Tom Green	22
Briscoe	0	Fannin	7	Jim Wells	3	Newton	1	Travis	372
Brooks	1	Fayette	7	Johnson	74	Nolan	6	Trinity	5
Brown	13	Fisher	0	Jones	4	Nueces	83	Tyler	2
Burleson	2	Floyd	2	Karnes	4	Ochiltree	1	Upshur	23
Burnet	14	Foard	0	Kaufman	26	Oldham	0	Upton	0
Caldwell	6	Fort Bend	315	Kendall	17	Orange	14	Uvalde	4
Calhoun	8	Franklin	8	Kenedy	0	Palo Pinto	2	Val Verde	4
Callahan	1	Freestone	8	Kent	0	Panola	8	Van Zandt	12
Cameron	56	Frio	2	Kerr	19	Parker	42	Victoria	27
Camp	6	Gaines	0	Kimble	0	Parmer	0	Walker	8
Carson	0	Galveston	102	King	0	Pecos	4	Waller	3
Cass	13	Garza	2	Kinney	0	Polk	0	Ward	1
Castro	1	Gillespie	10	Kleberg	3	Potter	68	Washington	20
Chambers	4	Glasscock	0	Knox	1	Presidio	0	Webb	23
Cherokee	13	Goliad	2	La Salle	21	Rains	1	Wharton	16
Childress	0	Gonzales	5	Lamar	21	Randall	11	Wheeler	1
Clay	2	Gray	2	Lamb	1	Reagan	0	Wichita	24
Cochran	0	Grayson	33	Lampasas	9	Real	0	Wilbarger	6
Coke	0	Gregg	145	Lavaca	10	Red River	0	Willacy	2
Coleman	3	Grimes	4	Lee	5	Reeves	2	Williamson	171
Collin	459	Guadalupe	30	Leon	6	Refugio	2	Wilson	8
Collingsworth	1	Hale	11	Liberty	26	Roberts	0	Winkler	0
Colorado	6	Hall	1	Limestone	15	Robertson	3	Wise	10
Comal	35	Hamilton	2	Lipscomb	0	Rockwall	72	Wood	12
Comanche	5	Hansford	3	Live Oak	1	Runnels	1	Yoakum	1
Concho	3	Hardeman	0	Llano	3	Rusk	14	Young	7
Cooke	8	Hardin	18	Loving	0	Sabine	1	Zapata	0
Coryell	32	Harris	1,711	Lubbock	41	San Augustine	1	Zavala	0
Cottle	1	Harrison	25	Lynn	2	San Jacinto	2	Total	11,316

Source: ICUT.

Enrollment by State
Fall 2003



Countries Represented by Nonresident Aliens, Fall 1997 - Fall 2003

	Fall	1997	1998	1999	2000	2001	2002	2003		Fall	1997	1998	1999	2000	2001	2002	2003
Albania	-	-	-	-	-	-	-	1	Mali	-	-	-	2	2	2	-	-
Angola	-	-	-	-	-	-	1	1	Mauritius	1	1	1	1	1	-	-	-
Argentina	-	-	1	2	6	6	5	5	Mexico	15	9	6	9	9	6	6	6
Australia	5	5	3	5	5	4	3	3	Moldova	-	-	-	-	-	-	-	1
Austria	-	1	1	1	-	1	1	1	Mongolia	-	-	-	-	-	-	-	1
Bahamas	-	1	2	2	2	2	2	2	Nepal	-	1	1	1	1	2	2	2
Bangladesh	3	4	3	2	3	3	2	2	Netherlands	1	1	1	1	-	1	-	-
Belarus	-	-	-	-	-	-	-	1	New Zealand	1	1	1	2	1	-	-	-
Belgium	2	2	2	1	1	1	-	-	Nicaragua	-	1	-	1	2	1	1	1
Belize	3	1	1	1	1	-	1	1	Nigeria	4	8	8	7	10	15	19	19
Bolivia	1	-	-	1	1	1	1	1	North Mariana Isle	-	2	1	1	1	-	-	-
Brazil	2	1	4	2	5	6	6	6	Norway	5	3	-	1	2	2	-	-
Bulgaria	7	8	6	6	6	4	4	4	Pakistan	1	1	9	8	9	10	3	3
Cambodia	-	-	-	-	1	1	-	-	Panama	5	1	1	-	1	2	2	2
Cameroon	-	-	-	-	1	1	3	3	Peru	-	-	-	-	1	1	1	1
Canada	12	16	15	17	16	18	18	18	Philippines	-	1	-	-	-	-	-	1
Cayman Islands	2	-	-	-	1	2	2	2	Poland	4	2	2	2	1	1	2	2
Chile	2	2	2	1	-	-	-	-	Romania	5	4	5	3	4	4	6	6
China*	56	56	62	64	65	69	72	72	Russia	3	1	3	4	3	4	2	2
Colombia	7	7	3	2	-	1	2	2	Rwanda	-	-	1	1	1	2	1	1
Coral Sea Isle Terr.	-	1	1	1	-	-	-	-	Saudi Arabia	-	-	1	2	1	1	-	-
Costa Rica	3	3	4	4	5	7	8	8	Senegal	-	1	1	1	-	-	-	-
Croatia	-	1	1	-	-	2	2	2	Serbia	-	-	-	-	1	1	-	-
Cyprus	-	-	-	1	-	-	-	-	Sierra Leone	-	-	-	-	-	1	1	1
Czech Republic	3	3	-	1	-	-	1	1	Singapore	2	2	2	3	4	1	1	1
Dominica	-	-	-	-	1	1	1	1	Slovakia	1	1	-	-	1	1	1	1
Ecuador	-	1	-	-	2	3	4	4	Slovenia	-	1	2	2	2	2	3	3
El Salvador	1	-	-	-	-	-	-	-	Somalia	-	-	1	1	1	-	-	-
Eritrea	1	-	-	-	-	-	-	-	South Africa	3	3	2	1	2	5	5	5
Estonia	1	-	-	-	-	-	-	-	Soviet Union	-	1	2	2	1	-	-	-
Ethiopia	-	-	1	1	1	-	-	-	Spain	3	2	2	1	1	2	3	3
Finland	2	1	1	-	-	-	1	1	Sri Lanka	5	4	5	5	6	4	4	4
France	4	4	3	6	3	4	6	6	St Vincent & Grenadines	-	-	-	-	-	1	1	1
Georgia	-	-	-	-	-	3	2	2	Sweden	3	5	7	5	8	4	4	4
Germany	4	3	3	6	10	7	7	7	Switzerland	4	4	3	2	1	-	-	-
Ghana	1	-	-	2	3	-	3	3	Taiwan	31	29	39	42	41	36	25	25
Guatemala	-	-	-	1	2	2	3	3	Thailand	8	5	8	5	6	5	2	2
Honduras	7	4	2	2	1	1	1	1	Togo	1	1	1	-	-	-	-	-
Hungary	2	3	3	6	6	6	4	4	Trinidad/Tobago	1	-	-	1	3	5	4	4
Iceland	-	2	-	-	-	-	-	-	Turkey	-	-	2	-	-	1	2	2
India	17	21	24	29	32	39	40	40	Uganda	-	-	-	-	1	3	2	2
Indonesia	9	11	11	9	6	5	3	3	Ukraine	1	-	1	2	5	4	1	1
Ireland	-	-	1	-	-	-	-	-	United Arab Emirates	-	1	1	2	2	2	-	-
Italy	1	-	1	1	1	2	2	2	United Arab Republic	-	-	-	-	1	-	-	-
Jamaica	1	2	3	3	2	1	-	-	United Kingdom	7	9	6	5	4	8	9	9
Japan	11	12	17	17	16	10	9	9	Uzbekistan	-	-	-	-	-	-	-	1
Jordan	-	1	-	-	-	-	-	-	Venezuela	4	1	4	7	10	9	11	11
Kazakhstan	2	-	-	-	-	-	-	-	Vietnam	-	-	-	-	2	2	4	4
Kenya	3	2	3	4	6	5	3	3	Virgin Islands (British)	1	1	1	1	-	-	-	1
Korea, Dem. People's	-	-	-	-	-	3	2	2	Yemen (Sanaa)	-	-	-	-	-	-	-	1
Korea, Rep. of	33	21	20	23	32	29	28	28	Yugoslavia	1	-	-	-	-	-	-	1
Kuwait	-	-	-	-	1	1	1	1	Zambia	1	-	-	-	-	-	-	-
Latvia	-	-	-	-	1	1	2	2	Zimbabwe	1	-	-	1	2	2	1	1
Lebanon	-	-	-	1	2	1	2	2	Unknown	-	-	-	-	-	-	-	1
Malaysia	1	4	2	2	2	1	-	-	Total	331	308	337	360	401	404	398	398

*Beginning Fall 1997, Hong Kong counted in China.

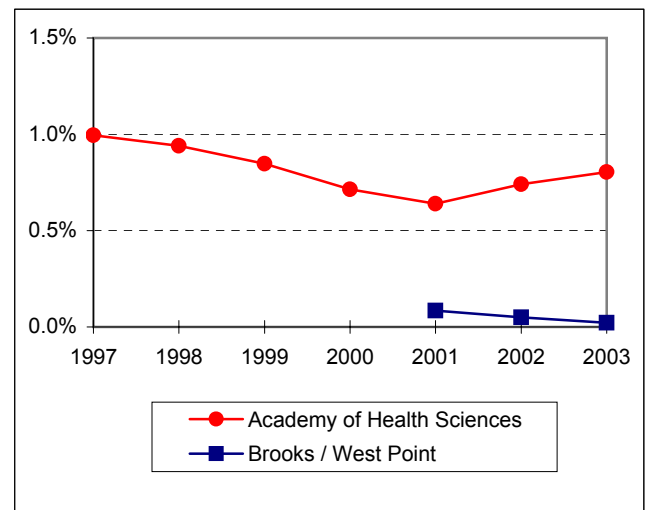
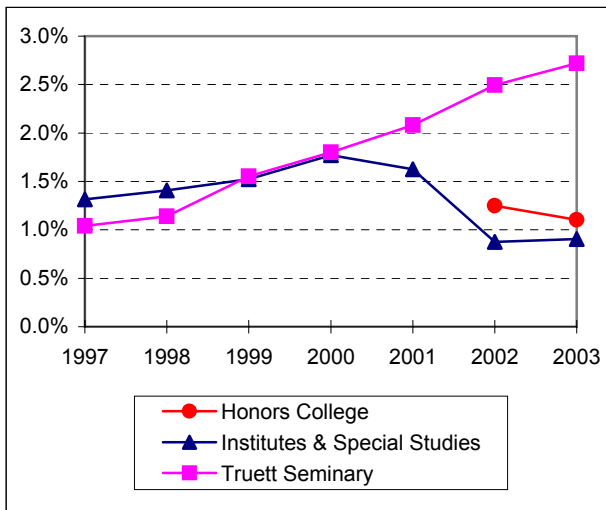
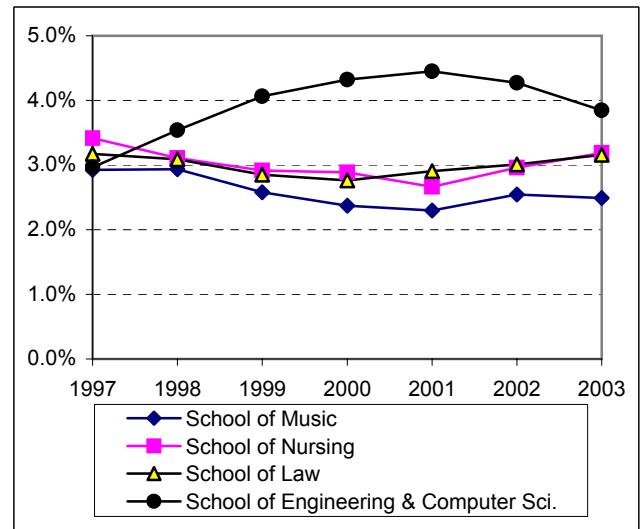
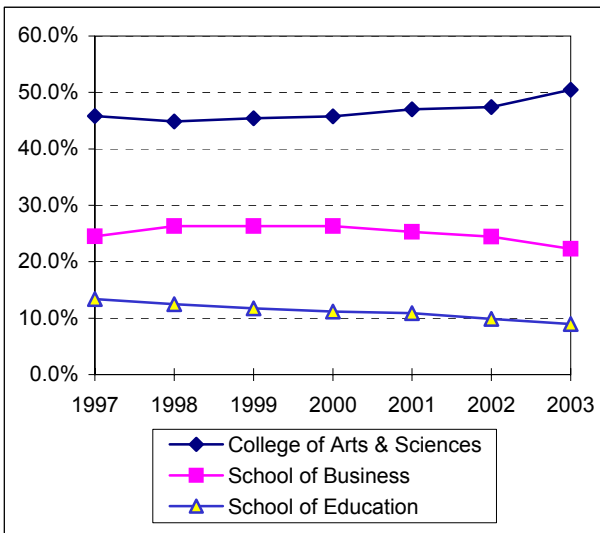
**Enrollment by Unit
Fall 1997 - Fall 2003**

	Fall	1997	1998	1999	2000	2001	2002	2003
College of Arts & Sciences		5,718	5,823	6,056	6,281	6,684	6,713	7,035
School of Business		3,059	3,421	3,508	3,609	3,598	3,463	3,105
School of Education		1,672	1,619	1,568	1,534	1,546	1,397	1,246
School of Engineering & Computer Sci.		370	460	542	593	633	605	536
School of Music		365	381	344	325	327	360	347
School of Nursing		426	404	389	396	379	419	444
Honors College							177	154
Institutes & Special Studies		164	183	203	243	231	124	126
Graduate School		48	25	24	14	11	10	10
School of Law		396	401	380	379	413	426	440
Truett Seminary		130	148	207	247	296	353	379
Academy of Health Sciences		124	122	113	98	91	105	112
Brooks / West Point						12	7	3
TOTAL		12,472	12,987	13,334	13,719	14,221	14,159	13,937

Notes:

1. The enrollment for the Graduate School reflects students classified as "No Major."
2. A new doctoral program in Physical Therapy was added in 2001. This program is administered through the Brooks and West Point academies.
3. The Honors College was established in 2002.

**Enrollment Percentage by Unit
Fall 1997 - Fall 2003**



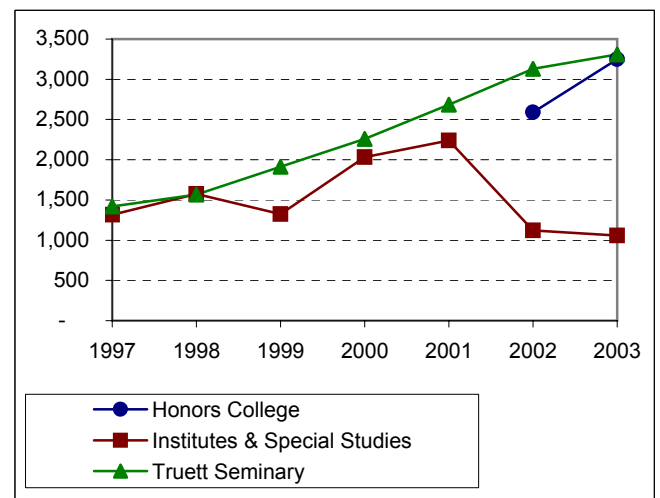
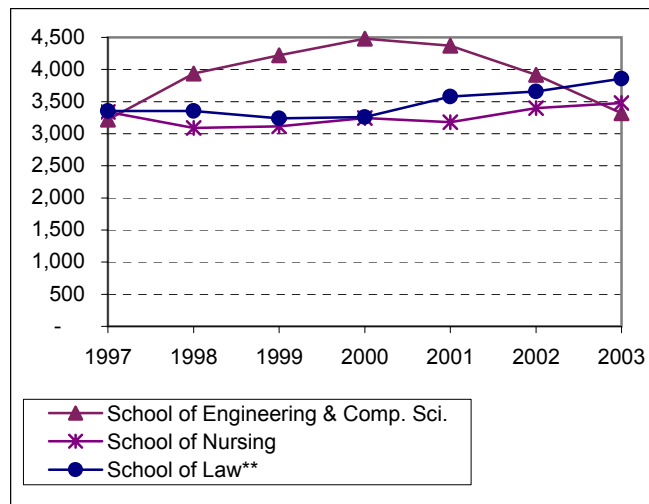
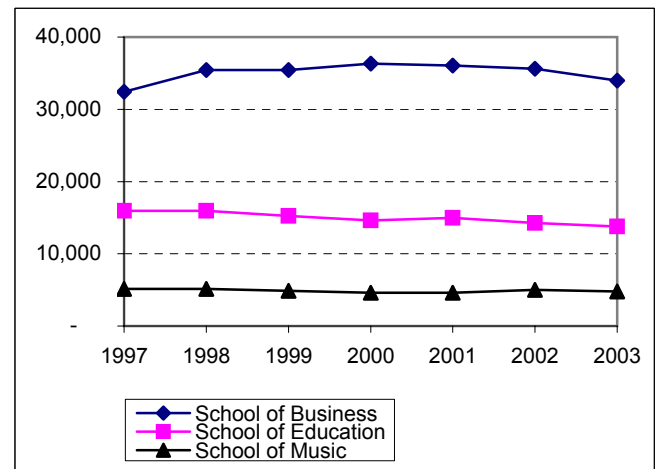
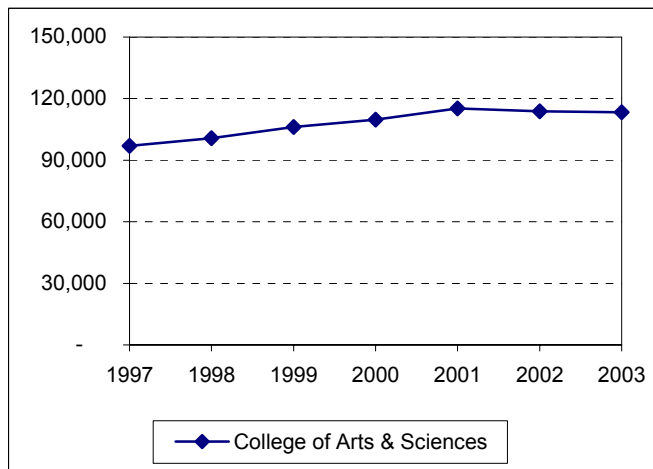
	Fall	1997	1998	1999	2000	2001	2002	2003
College of Arts & Sciences		45.8%	44.8%	45.4%	45.8%	47.0%	47.4%	50.5%
School of Business		24.5%	26.3%	26.3%	26.3%	25.3%	24.5%	22.3%
School of Education		13.4%	12.5%	11.8%	11.2%	10.9%	9.9%	8.9%
School of Engineering & Computer Sci.		3.0%	3.5%	4.1%	4.3%	4.5%	4.3%	3.8%
School of Music		2.9%	2.9%	2.6%	2.4%	2.3%	2.5%	2.5%
School of Nursing		3.4%	3.1%	2.9%	2.9%	2.7%	3.0%	3.2%
Honors College							1.3%	1.1%
Institutes & Special Studies		1.3%	1.4%	1.5%	1.8%	1.6%	0.9%	0.9%
Graduate School					0.1%	0.1%	0.1%	0.1%
School of Law		3.2%	3.1%	2.8%	2.8%	2.9%	3.0%	3.2%
Truett Seminary		1.0%	1.1%	1.6%	1.8%	2.1%	2.5%	2.7%
Academy of Health Sciences		1.0%	0.9%	0.8%	0.7%	0.6%	0.7%	0.8%
Brooks / West Point						0.1%	0.0%	0.0%

See Notes, page 14.

Source: IMTS.

**Student Credit Hours by Unit*
(Excluding Health Sciences)
Fall 1997 - Fall 2003**

	Fall	1997	1998	1999	2000	2001	2002	2003
College of Arts & Sciences		97,007	100,794	106,150	109,742	115,178	113,781	113,299
School of Business		32,418	35,429	35,429	36,307	36,057	35,600	33,980
School of Education		15,934	15,930	15,225	14,640	14,963	14,272	13,790
School of Engineering & Comp. Sci.		3,218	3,938	4,219	4,480	4,372	3,919	3,321
School of Music		5,147	5,123	4,856	4,617	4,605	4,994	4,797
School of Nursing		3,337	3,089	3,114	3,245	3,180	3,399	3,479
Honors College							2,588	3,249
Institutes & Special Studies		1,316	1,576	1,324	2,033	2,240	1,122	1,056
School of Law**		3,353	3,353	3,238	3,260	3,580	3,660	3,857
Truett Seminary		1,420	1,568	1,912	2,260	2,683	3,130	3,311
TOTAL		163,150	170,800	175,467	180,583	186,858	186,465	184,139

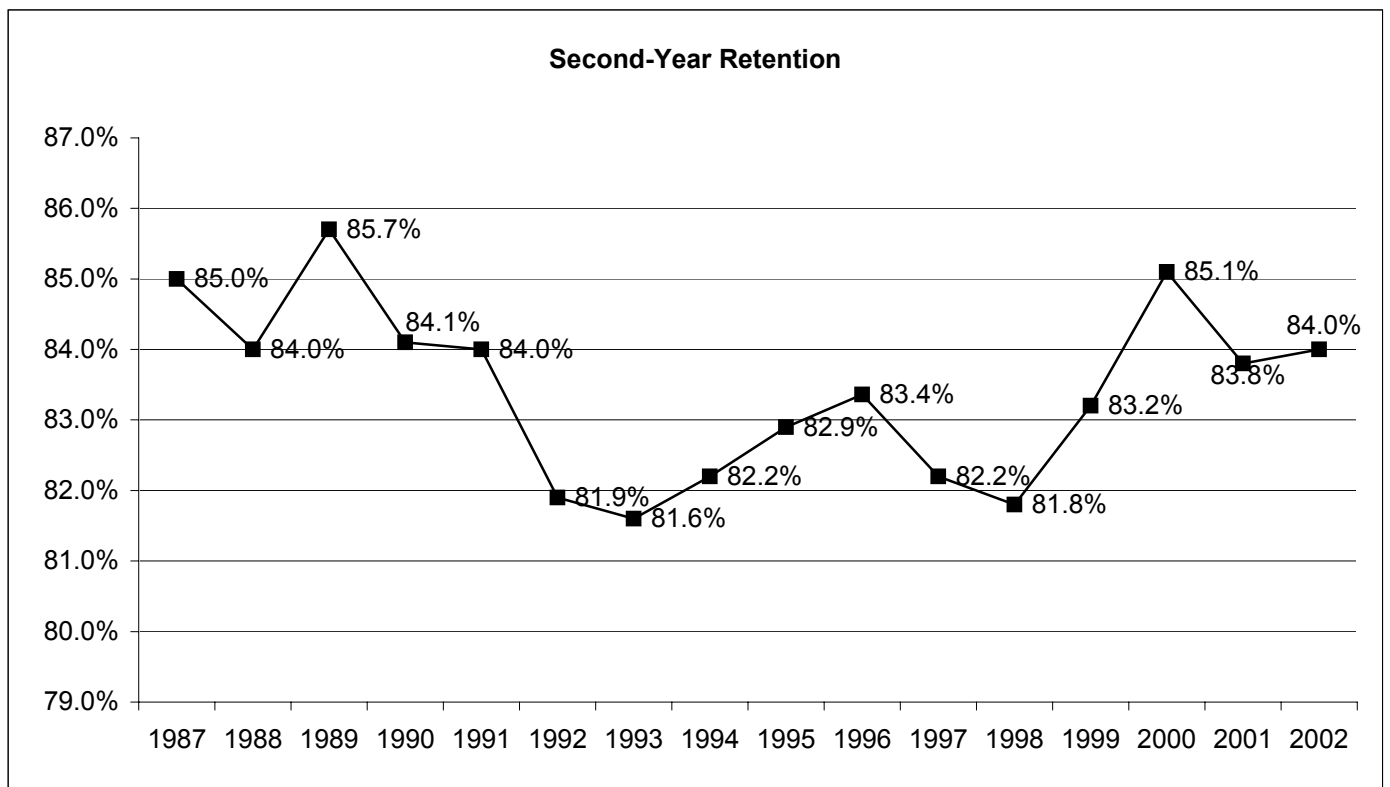


*BIC courses have been credited to the department of the instructor. See additional notes on page 14.

**Quarter hours converted to semester hours.

Retention of First-Time Freshman Classes Entering Fall 1987 - Fall 2002

First-Time Freshman Class of:	After 1 year		After 2 years		After 3 years			After 4 years			After 5 years			After 6 years		
	Cont.	Drop.	Cont.	Drop.	Cont.	Drop.	Grad.	Cont.	Drop.	Grad.	Cont.	Drop.	Grad.	Cont.	Drop.	Grad.
1987	85.0%	15.0%	75.6%	24.4%	71.7%	27.1%	1.2%	24.2%	28.2%	47.6%	3.4%	28.3%	68.3%	1.1%	28.2%	70.7%
1988	84.0%	16.0%	75.5%	24.5%	72.5%	26.5%	1.0%	29.8%	28.3%	41.9%	3.3%	28.5%	68.2%	0.8%	27.9%	71.3%
1989	85.7%	14.3%	74.8%	25.2%	71.2%	27.7%	1.1%	28.3%	28.9%	42.8%	3.9%	28.9%	67.2%	1.2%	28.8%	70.0%
1990	84.1%	15.9%	73.0%	27.0%	69.8%	29.0%	1.2%	28.1%	29.6%	42.3%	4.2%	30.0%	65.8%	1.6%	29.4%	69.0%
1991	84.0%	16.0%	74.5%	25.5%	70.7%	28.2%	1.1%	26.5%	29.6%	43.9%	3.8%	29.7%	66.5%	1.3%	29.0%	69.7%
1992	81.9%	18.1%	71.5%	28.5%	67.2%	31.5%	1.4%	28.4%	32.3%	39.3%	4.8%	32.0%	63.2%	0.9%	32.2%	66.9%
1993	81.6%	18.4%	72.0%	28.0%	68.4%	30.4%	1.2%	27.5%	32.3%	40.2%	4.5%	32.3%	63.2%	1.3%	31.8%	66.9%
1994	82.2%	17.8%	72.3%	27.7%	68.5%	30.1%	1.4%	27.0%	31.1%	41.9%	4.9%	31.9%	63.2%	1.5%	31.8%	66.7%
1995	82.9%	17.1%	76.0%	24.0%	71.4%	27.2%	1.4%	28.8%	28.3%	42.9%	4.4%	28.5%	67.1%	1.2%	28.0%	70.8%
1996	83.4%	16.6%	74.8%	25.2%	72.2%	26.9%	0.9%	29.4%	27.7%	42.9%	4.0%	27.6%	68.4%	1.3%	27.0%	71.7%
1997	82.2%	17.8%	73.7%	26.3%	70.3%	28.4%	1.2%	30.0%	29.9%	40.1%	4.9%	29.0%	66.1%	1.4%	28.5%	70.2%
1998	81.8%	18.2%	75.0%	25.0%	71.1%	27.1%	1.7%	28.9%	28.1%	43.0%	4.5%	27.1%	68.4%			
1999	83.2%	16.8%	75.5%	24.5%	70.7%	27.5%	1.8%	27.7%	27.0%	45.3%						
2000	85.1%	14.9%	77.3%	22.6%	74.1%	24.2%	1.7%									
2001	83.8%	16.2%	75.7%	24.3%												
2002	84.0%	16.0%														
Average	83.4%	16.6%	74.5%	25.5%	70.7%	28.0%	1.3%	28.0%	29.3%	42.6%	4.2%	29.5%	66.3%	1.2%	29.3%	69.4%

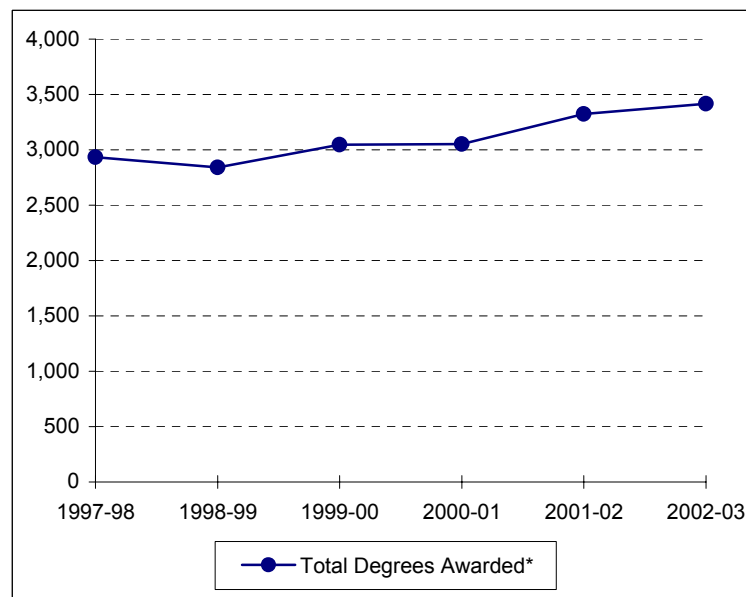
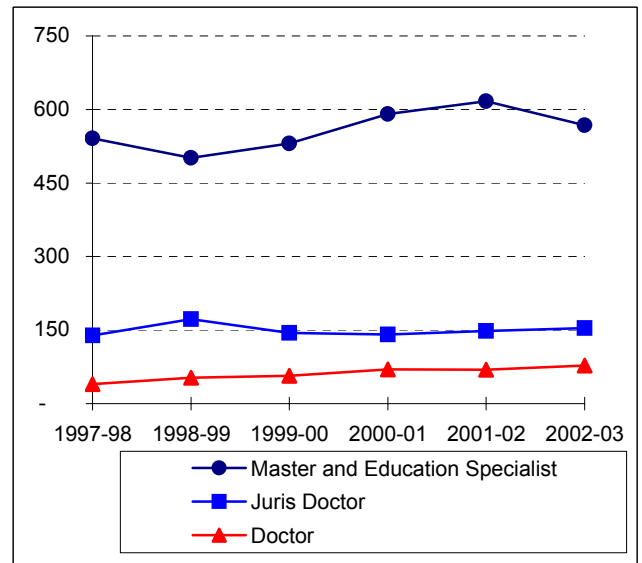
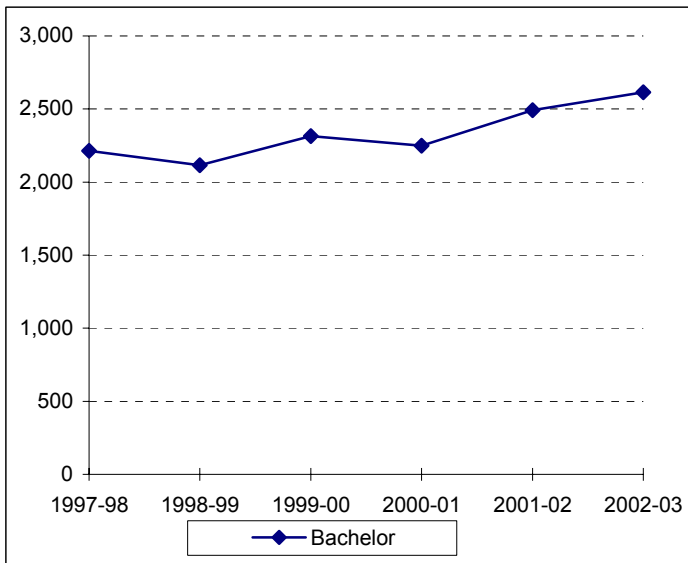


Distribution of Degrees (Duplicated Count*)
1997-98 through 2002-03

	1997-98	1998-99	1999-00	2000-01	2001-02	2002-03
Bachelor of Arts	894	871	910	811	997	1036
Bachelor of Business Administration	886	865	951	1002	1009	1028
Bachelor of Fine Arts	22	16	26	31	37	40
Bachelor of Music	32	26	24	22	30	29
Bachelor of Music Education	23	18	30	24	18	28
Bachelor of Science	145	131	135	142	165	200
Bachelor of Science in Aviation Sciences	8	5	5	8	13	8
Bachelor of Science in Bioinformatics				1	8	17
Bachelor of Science in Computer Science	20	21	38	24	24	35
Bachelor of Science in Education	364	355	415	350	350	345
Bachelor of Science in Electrical & Computer Engineering						23
Bachelor of Science in Engineering	21	24	24	28	41	7
Bachelor of Science in Family & Consumer Sciences	48	37	38	42	59	73
Bachelor of Science in Mechanical Engineering						12
Bachelor of Science in Nursing	106	98	85	97	86	90
TOTAL BACHELOR DEGREES	2569	2467	2681	2582	2837	2971
Master of Accountancy		10	18	35	39	35
Master of Arts	81	62	61	58	66	56
Master of Business Administration	116	109	103	158	149	105
Master of Business Admin. in International Management	1	1	0	3	1	0
Master of Clinical Gerontology	5	6	2	4	4	7
Master of Divinity	14	16	48	36	33	51
Master of Environmental Studies	4	5	2	1	0	1
Master of Fine Arts	1	2	3	2	2	0
Master of Health Administration	55	59	48	47	39	38
Master of International Journalism	2	1	0	0	1	1
Master of International Management	2	1	0	1	0	0
Master of Music	23	25	24	22	22	31
Master of Physical Therapy	24	18	22	19	21	18
Master of Public Policy and Administration	6	2	7	4	4	2
Master of Science	39	32	25	25	21	34
Master of Science in Clinical Psychology	21	7	12	11	8	11
Master of Science in Communication Sciences & Disorders	35	40	42	37	28	26
Master of Science in Economics	2	7	5	5	6	4
Master of Science in Education	82	74	59	43	83	64
Master of Science in Gerontology	8	7	7	9	7	12
Master of Science in Information Systems		5	19	27	31	18
Master of Science in Limnology	3	1	0	1	0	0
Master of Science in Nursing	10	3	7	10	14	13
Master of Social Work				17	27	29
Master of Taxation	6	8	18	9	6	10
TOTAL MASTER'S DEGREES	540	501	532	584	612	566
TOTAL EDUCATION SPECIALIST DEGREES		1	0	7	6	4
TOTAL JURIS DOCTOR DEGREES	139	172	144	141	148	154
Doctor of Education	13	17	21	31	18	25
Doctor of Ministry					2	7
Doctor of Philosophy	20	26	25	31	26	31
Doctor of Psychology	7	10	11	8	11	11
Doctor of Science in Physical Therapy					12	4
TOTAL DOCTORAL DEGREES	40	53	57	70	69	78
TOTAL DEGREES AWARDED	3288	3194	3414	3384	3672	3773

*Degree information on this page is reported beginning with the Summer semester and including the following Fall and Spring terms. An individual graduate with multiple majors is counted as a whole graduate in each major area of study (i.e., duplicated count).

**Summary of Degrees Awarded (Unduplicated Count*)
1997-98 through 2002-03**



Degree Level:	1997-98	1998-99	1999-00	2000-01	2001-02	2002-03
Bachelor	2,213	2,115	2,315	2,249	2,491	2,615
Master and Education Specialist	541	501	531	591	617	568
Juris Doctor	139	172	144	141	148	154
Doctor	40	53	57	70	69	78
Total Degrees Awarded*	2,933	2,841	3,047	3,051	3,325	3,415

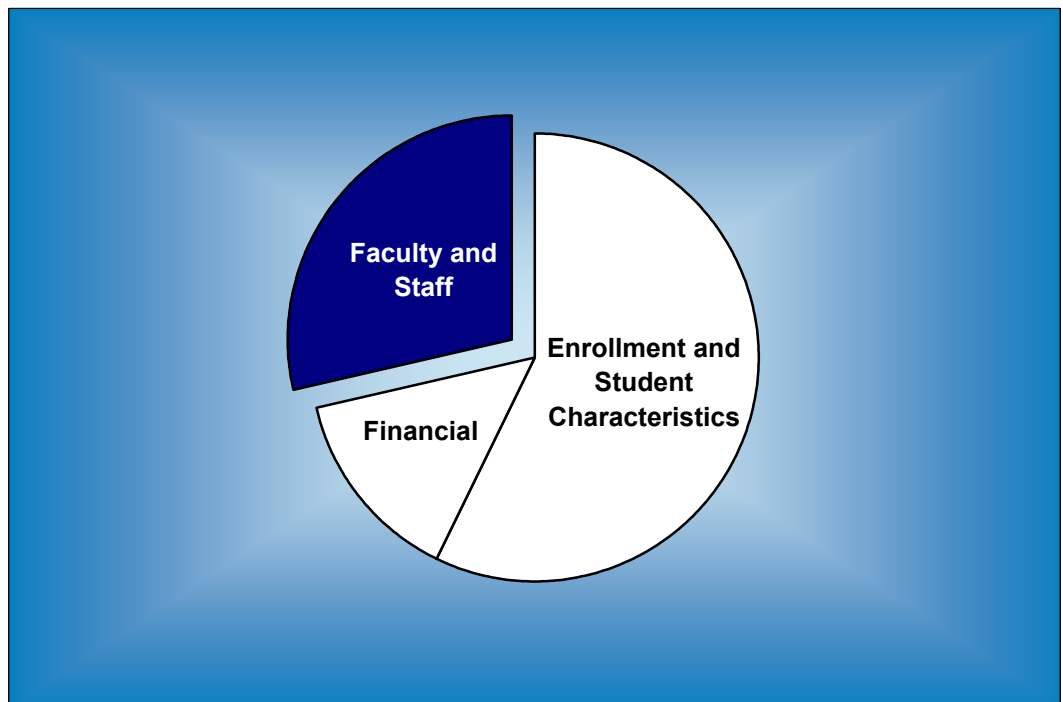
*The information on this page indicates the number of degree recipients (i.e., unduplicated count). Degree information is reported beginning with the Summer semester and including the following Fall and Spring terms.

**Degree Programs
(as of October 2003)**

Accounting (BBA)	Clinical Psychology (MSCP)	Environmental Studies (MS)
Accounting (MAcc)	Clinical Psychology (PsyD)	Family Nurse Practitioners (MSN)
Advanced Neonatal Nursing (MSN)	Communication Sci. & Disorders (BA)	Fashion Design (BA)
Advanced Nursing Leadership (MSN)	Communication Sci. & Disorders (MA)	Fashion Design (BSFCS)
American Studies (BA)	Communication Sci. & Disorders (MSCSD)	Fashion Merchandising (BA)
American Studies (MA)	Communication Specialist (BA)	Fashion Merchandising (BSFCS)
Anthropology (BA)	Communication Studies (MA)	Finance (BBA)
Applied Mathematics (BS)	Community Health (BSEd)	Financial Services / Planning (BBA)
Applied Music (BM)	Composition (BM)	Forensic Science (BS)
Applied Sociology (PhD)	Composition (MM)	Forestry (BA)
Archaeology (BA)	Computer Information Systems (BBA)	Forestry (BS)
Architecture (BA)	Computer Information Systems-CIS (BSEd)	French (BA)
Art (BFA)	Computer Information Systems-ISY (BSEd)	French (BSEd)
Art (BSEd)	Computer Science (BA)	General Family & Consumer Sci. (BA)
Art History (BA)	Computer Science (BSCS)	General Family & Consumer Sci. (BSFCS)
Asian Studies (BA)	Computer Science (MS)	General Studies in HHPR (BSEd)
Athletic Training Sports Medicine (BSEd)	Conducting (MM)	Generic Special Education (BSEd)
Aviation Sciences (BSAvSc)	Curriculum & Instruction (EdD)	Geography (BA)
Basic Business (BBA)	Curriculum & Instruction (EdS)	Geology (BS)
Biblical & Related Languages (BA)	Curriculum & Instruction (MA)	Geology (MS)
Biochemistry (BA)	Curriculum & Instruction (MSEd)	Geology (PhD)
Biochemistry (BS)	Dentistry (BA)	Geophysics (BS)
Bioinformatics (BSI)	Dentistry (BS)	German (BA)
Biology (BA)	Design (BFA)	German (BSEd)
Biology (BS)	Directing (MFA)	Graduate - Nondegree
Biology (BSEd)	Earth Science (BA)	Great Texts of the Western Tradition (BA)
Biology (MA)	Earth Science (BSEd)	Greek (BA)
Biology (MS)	Earth Science (MA)	Health (BSEd)
Biology (PhD)	Economics (BA)	Health Care Administration (MHA)
Biomedical Studies (MS)	Economics (BBA)	Health / Fitness Studies (BSEd)
Biomedical Studies (PhD)	Economics (BS)	Health, Human Performance & Recreation (MSEd)
Business Administration (BA)	Economics (BSEd)	Health Science Studies (BSEd)
Business Administration (BSEd)	Economics (MSEco)	History (BA)
Business Administration (MBA)	Education (MA)	History (BSEd)
Business Administration (MBA)*	Educational Administration (EdD)	History (MA)
Business - Broadcasting (BBA)	Educational Administration (EdS)	Human Performance (BSEd)
Business - Journalism (BBA)	Educational Administration (MSEd)	Human Resources Management (BBA)
Chemistry (BA)	Educational Psychology (EdS)	Information Systems Management (MBA)
Chemistry (BS)	Educational Psychology (MA)	Information Systems (MSIS)
Chemistry (BSEd)	Educational Psychology (MSEd)	Instrumental Music (BME)
Chemistry (MS)	Educational Psychology (PhD)	Interdisciplinary Studies (BSEd)
Chemistry (PhD)	Electrical & Computer Engineering (BSECE)	Interior Design (BA)
Child & Family Studies (BA)	Engineering (BSE)	Interior Design (BSFCS)
Child & Family Studies (BSFCS)	English (BA)	International Business (BBA)
Choral Music (BME)	English (BSEd)	International Economics (MA)
Church Music (BM)	English (MA)	International Economics (MS)
Church Music (MM)	English (PhD)	International Journalism (MIJ)
Church Recreation (BSEd)	Entrepreneurship (BBA)	International Management (MBA)
Church-State Studies (MA)	Environmental Biology (MS)	International Management (MBAIM)
Church-State Studies (PhD)	Environmental Studies (BA)	International Relations (MA)
Classics (BA)	Environmental Studies (BS)	International Studies (BA)
Clinical Laboratory Science (BS)	Environmental Studies (MES)	Journalism (BA)

Journalism (BSEd)	Physics (PhD)
Journalism (MA)	Piano Accompanying (MM)
Language and Linguistics (BA)	Piano Pedagogy & Performance (MM)
Latin American Studies (BA)	Political Science (BA)
Latin (BA)	Political Science (BSEd)
Latin (BSEd)	Political Science (MA)
Law (JD)	Pre-Business
Life - Earth Science (BSEd)	Pre-Education
Limnology (MSL)	Pre-Forensic Science
Management (BBA)	Pre-Nursing
Marketing (BBA)	Professional Selling (BBA)
Mathematics (BA)	Professional Writing (BA)
Mathematics (BS)	Psychology (BA)
Mathematics (BSEd)	Psychology (BS)
Mathematics (MS)	Public Administration (BBA)
Mathematics (PhD)	Public Policy & Administration (MPPA)
Mechanical Engineering (BSME)	Reading (BSEd)
Medicine (BA)	Real Estate (BBA)
Medicine (BS)	Recreation (BSEd)
Ministry (DMin)	Regional / Urban Studies (BBA)
Museum Studies (BA)	Religion (BA)
Museum Studies (BS)	Religion (MA)
Museum Studies (MA)	Religion (PhD)
Music (BA)	Risk Management and Insurance (BBA)
Music Education (MM)	Russian (BA)
Music History & Literature (BM)	Science (BSEd)
Music History & Literature (MM)	Slavic and East European Studies (BA)
Music Theory (MM)	Social Studies (BSEd)
Neuroscience (BS)	Social Work (BSW)
Neuroscience (MA)	Social Work (MSW)
Neuroscience (PhD)	Sociology (BA)
Nursing (BSN)	Sociology (BSEd)
Nutrition Sciences (BA)	Sociology (MA)
Nutrition Sciences (BS)	Spanish (BA)
Nutrition Sciences (BSFCS)	Spanish (BSEd)
Operations Management (BBA)	Spanish (MA)
Optometry (BA)	Speech Communication (BA)
Optometry (BS)	Speech Communications (BSEd)
Pedagogy (BM)	Speech & Language Therapy (BSEd)
Performance (BFA)	Statistics (MA)
Performance (MM)	Statistics (PhD)
Philosophy (BA)	Studio Art (BA)
Philosophy (MA)	Studio Art (BFA)
Philosophy (PhD)	Taxation (MT)
Physical Science (BSEd)	Telecommunication (BA)
Physical Therapy (DScPT)	Theater Arts (BA)
Physical Therapy (MPT)	Theater Arts (BSEd)
Physics (BA)	Theater Arts (MA)
Physics (BS)	Theology (MDiv)
Physics (BSEd)	Theory (BM)
Physics (MA)	University Scholars (BA)
Physics (MS)	

Faculty and Staff



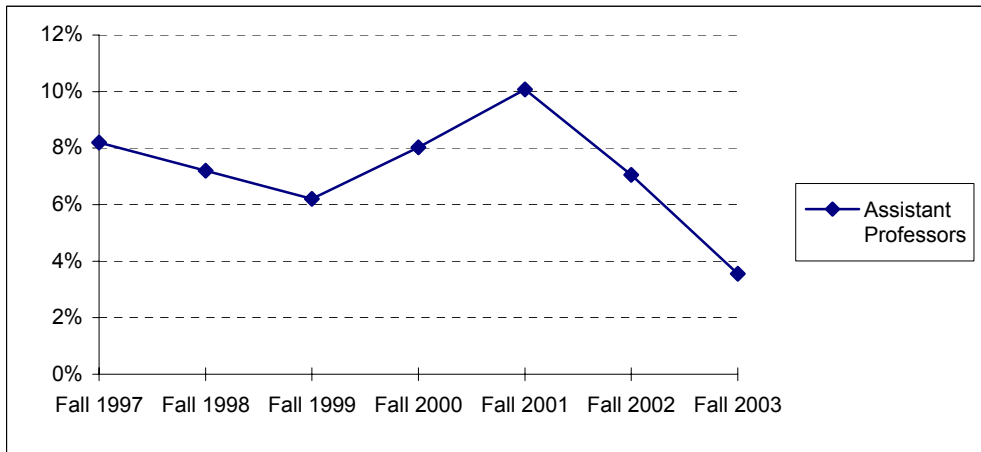
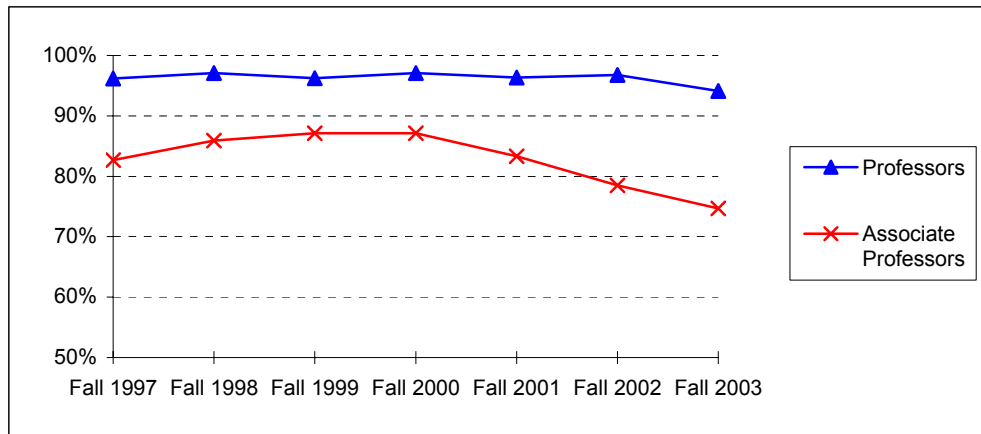
**Full-Time Faculty Positions (AAUP Definition)
Fall 1997 - Fall 2003**

Rank	Fall 1997		Fall 1998		Fall 1999		Fall 2000		Fall 2001		Fall 2002		Fall 2003	
	Male	Female	Male	Female	Male	Female	Male	Female	Male	Female	Male	Female	Male	Female
Professors:														
Number	201	34	205	35	203	35	203	39	211	34	213	33	210	29
Tenured	194	32	198	35	195	34	197	38	202	34	205	33	196	29
Associate Prof.:														
Number	84	43	89	46	91	49	86	46	89	49	96	48	105	49
Tenured	68	37	78	38	79	43	74	41	71	44	71	42	75	40
Assistant Prof:														
Number	67	55	73	52	77	52	84	53	85	54	93	63	99	70
Tenured	3	7	2	7	2	6	5	6	6	8	3	8	2	4
Instructors:														
Number	0	2	0	1	0	1	0	3	0	3	0	1	0	0
Tenured	0	1	0	1	0	1	0	1	0	1	0	0	0	0
Lecturers:														
Number	47	73	50	78	51	91	53	95	63	109	80	129	84	131
Total Number	399	207	417	212	422	228	426	236	448	249	482	274	498	279
Total Tenured	265	77	278	81	276	84	276	86	279	87	279	83	273	73

**Highest Degree Earned by Full-Time Faculty
Fall 1997 - Fall 2003**

	Fall 1997	Fall 1998	Fall 1999	Fall 2000	Fall 2001	Fall 2002	Fall 2003
Associate's	0	0	0	0	0	1	1
Bachelor's	1	1	0	0	1	1	2
Master's	138	145	150	159	165	199	222
Doctoral	448	463	478	480	507	550	569
Professional	19	20	22	23	24	26	26
Total	606	629	650	662	697	777	820

**Percentage of Full-Time Faculty with Tenure (AAUP Definition)
Fall 1997 - Fall 2003**



	Fall 1997	Fall 1998	Fall 1999	Fall 2000	Fall 2001	Fall 2002	Fall 2003
Professors	96.2%	97.1%	96.2%	97.1%	96.3%	96.7%	94.1%
Associate Professors	82.7%	85.9%	87.1%	87.1%	83.3%	78.5%	74.7%
Assistant Professors	8.2%	7.2%	6.2%	8.0%	10.1%	7.1%	3.6%
Instructors	50.0%	100.0%	100.0%	33.3%	33.3%	0.0%	0.0%
All Faculty	56.4%	57.1%	55.4%	54.7%	52.5%	47.9%	44.5%

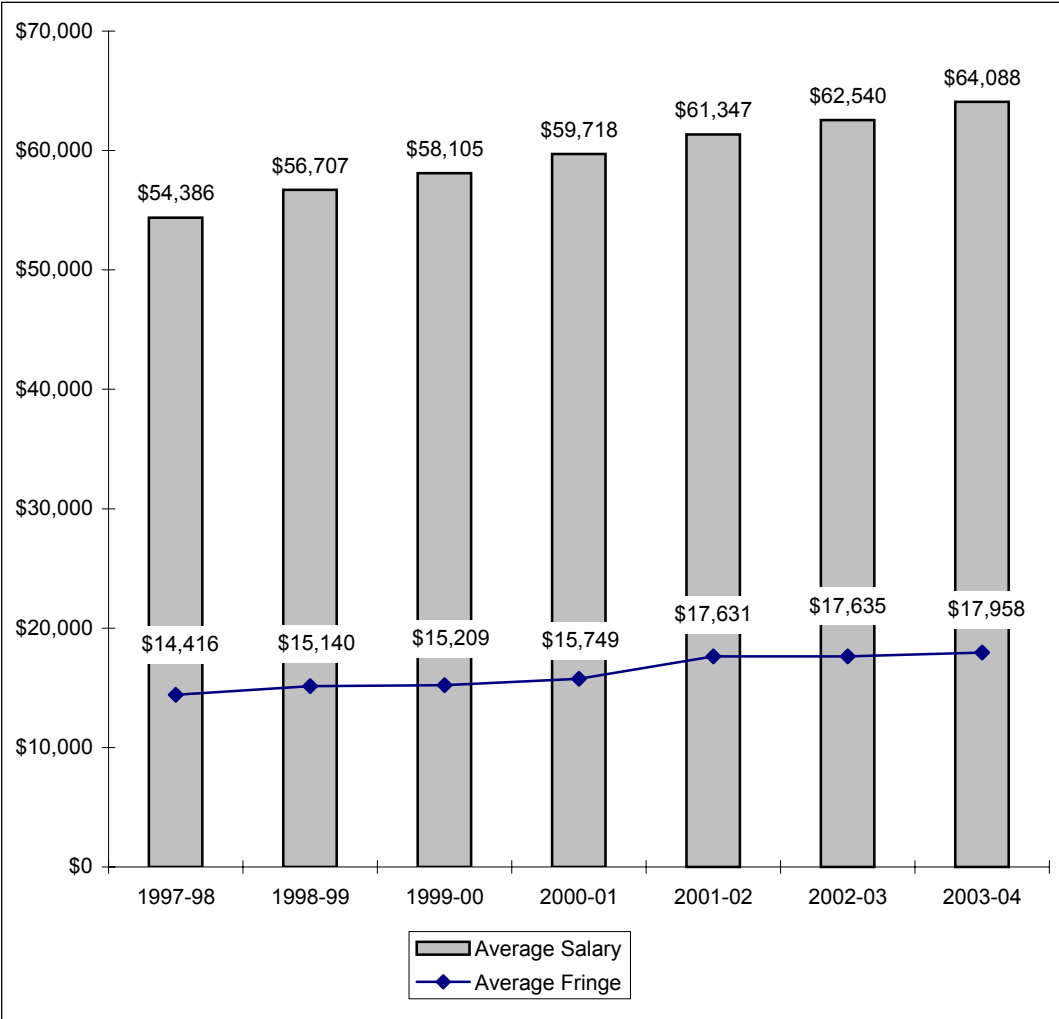
**Average Salaries of Full-Time Instructional Faculty
on Academic Year Contracts (AAUP Definition)
Fall 1997 - Fall 2003**

Rank	Fall 1997		Fall 1998		Fall 1999		Fall 2000	
	Number in Rank	Average Salary	Number in Rank	Average Salary	Number in Rank	Average Salary	Number in Rank	Average Salary
Professor	235	\$70,565	240	\$73,937	238	\$77,289	242	\$79,299
Associate Professor	127	\$54,382	135	\$56,977	140	\$58,365	132	\$60,511
Assistant Professor	122	\$42,459	125	\$44,193	129	\$45,423	137	\$47,530
Instructor	2	*	1	*	1	*	3	*
Lecturer	120	\$35,127	128	\$36,420	142	\$37,309	148	\$38,525
All Ranks	606	\$54,386	629	\$56,707	650	\$58,105	662	\$59,718
Average Fringe		\$14,416		\$15,140		\$15,209		\$15,749
Fringe as a Percentage of Average Salary		26.5%		26.7%		26.2%		26.4%
Percentage Increase in Average Salary for Continuing Faculty		6.7%		4.6%		4.3%		4.1%

Rank	Fall 2001		Fall 2002		Fall 2003	
	Number in Rank	Average Salary	Number in Rank	Average Salary	Number in Rank	Average Salary
Professor	245	\$81,747	246	\$83,562	239	\$86,590
Associate Professor	138	\$62,697	144	\$65,136	154	\$67,706
Assistant Professor	139	\$50,046	156	\$55,208	169	\$57,177
Instructor	3	*	1	*	0	
Senior Lecturer	64	\$45,227	61	\$46,482	60	\$47,826
Lecturer	108	\$37,884	148	\$39,478	155	\$39,627
All Ranks	697	\$61,347	756	\$62,540	777	\$64,088
Average Fringe		\$17,631		\$17,635		\$17,958
Fringe as a Percentage of Average Salary		28.7%		28.2%		28.0%
Percentage Increase in Average Salary for Continuing Faculty		5.0%		4.9%		3.4%

*Data not displayed for five or fewer faculty.

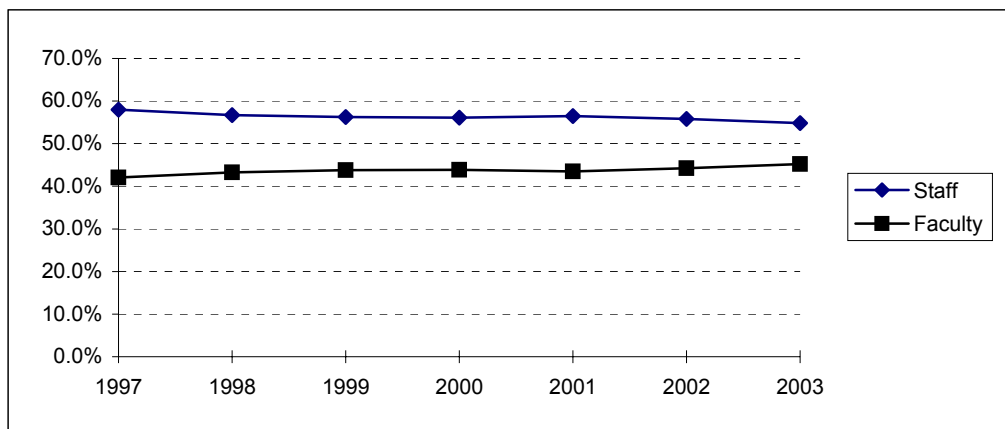
**Average Compensation of Full-Time Instructional Faculty
on Academic Year Contracts
1997-98 through 2003-04**



**Institutional Staff
Fall 1997 - Fall 2003**

Fall	1997	1998	1999	2000	2001	2002	2003
Faculty:							
Full-Time	633	655	676	689	725	806	851
Part-Time	49	86	114	133	116	110	144
Executive/Administrative:							
Full-Time	135	142	150	155	172	173	181
Part-Time	1	1	1	0	0	1	1
Other Professional:							
Full-Time	270	279	299	325	352	421	453
Part-Time	18	15	17	13	14	14	11
Technical/Paraprofessional:							
Full-Time	34	38	44	46	44	33	40
Part-Time	2	2	2	4	3	4	2
Clerical/Secretarial:							
Full-Time	339	351	361	372	392	399	408
Part-Time	61	61	64	58	44	39	42
Skilled Crafts:							
Full-Time	5	5	6	6	4	7	6
Part-Time	1	1	2	2	1	0	0
Service/Maintenance:							
Full-Time	60	62	60	63	61	57	58
Part-Time	14	15	9	7	6	7	5
Total:							
Full-Time	1476	1532	1596	1656	1750	1896	1997
Part-Time	146	181	209	217	184	175	205
Grand Total	1622	1713	1805	1873	1934	2071	2202

**Percentage of Institutional Staff
Fall 1997 - Fall 2003**



Fall	1997	1998	1999	2000	2001	2002	2003
Staff	58.0%	56.7%	56.2%	56.1%	56.5%	55.8%	54.8%
Faculty	42.0%	43.3%	43.8%	43.9%	43.5%	44.2%	45.2%

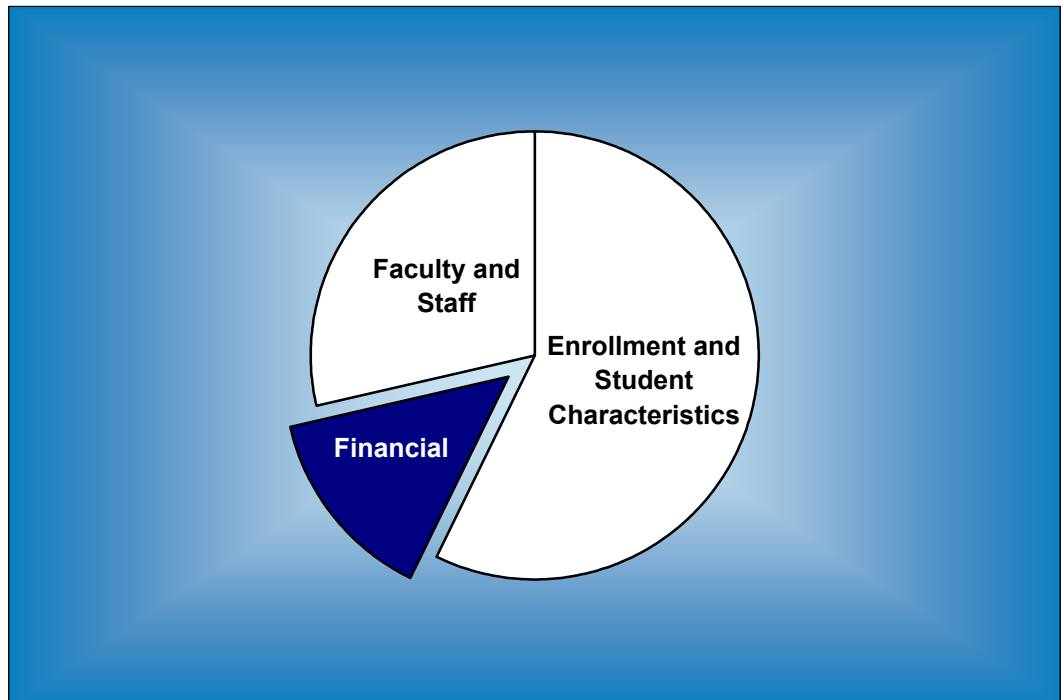
**Full-Time Faculty by Religious Affiliation
Fall 1997 - Fall 2003**

Fall	1997	1998	1999	2000	2001	2002	2003
Assembly of God	1	1	1	1	1	1	1
Baptist	294	307	315	315	331	381	401
Catholic	46	51	45	51	48	61	73
Church of Christ	16	16	15	16	16	21	20
Disciples of Christ	16	16	13	11	13	14	15
Episcopalian	45	47	49	45	47	51	53
Lutheran	34	35	38	38	40	41	46
Methodist	71	73	70	71	78	81	80
Non-/Inter-Denominational	10	11	11	16	16	17	17
Presbyterian	40	39	36	41	46	49	50
Other / Unspecified	33	33	57	57	61	60	64
Total	606	629	650	662	697	777	820

**Full-Time Staff by Religious Affiliation
Fall 1997 - Fall 2003**

Fall	1997	1998	1999	2000	2001	2002	2003
Assembly of God	6	5	4	6	7	7	11
Baptist	507	493	484	507	569	594	614
Catholic	73	76	84	86	100	110	112
Church of Christ	25	26	30	32	35	37	34
Disciples of Christ	19	17	20	17	18	20	21
Episcopalian	17	17	17	15	17	26	26
Lutheran	30	27	33	37	40	36	35
Methodist	83	90	96	99	109	110	115
Non-Denominational	13	13	20	24	20	42	58
Presbyterian	13	17	17	21	25	28	25
Other / Unspecified	57	96	115	123	85	80	100
Total	843	877	920	967	1025	1090	1151

Financial



**Undergraduate Tuition and Other Semester Charges
1997-98 through 2003-04**

	1997-98	1998-99	1999-00	2000-01	2001-02	2002-03	2003-04
UG Tuition per Semester Hour (8)	\$288.00	\$308.00	\$329.00	\$355.00	\$379.00	\$405.00	\$432.00
Increase from Prior Year	7.1%	6.9%	6.8%	7.9%	6.8%	6.9%	6.7%
UG Flat Tuition Rate (7)						\$ 15,700	\$ 16,750
Increase from Prior Year							6.7%
Application Fee	25.00	35.00	35.00	35.00	35.00	35.00	35.00
Applied Music Fee(1)	90.00	96.00	105.00	110.00	117.00	125.00	133.00
Change-of-Course Fee	20.00	20.00	20.00	20.00	20.00	20.00	20.00
Chapel-Forum Fee	10.00	15.00	15.00	25.00	25.00	25.00	30.00
Credit by Baylor Exam Fee	144.00	154.00	164.50	177.50	189.50	203.00	216.00
General Student Fee	385.00	427.00	490.00	524.00	590.00	625.00	690.00
Enrollment Deposit (2)	100.00	100.00	100.00	100.00	100.00	100.00	100.00
Lab/Course Fees (3)	25.00	25.00	25.00	25.00	25.00	25.00	35.00
Late Registration Fee (4)	20.00	20.00	20.00	20.00	20.00	20.00	20.00
Student Life Fee	1.00	1.00	1.00	1.00	1.00	0.00	0.00
Technology Fee		85.00	90.00	95.00	101.00	107.00	150.00
Vehicle Registration Fee (5)	95.00	120.00	145.00	170.00	175.00	175.00	175.00
Room (Freshmen in Penland/Collins)	950.00	979.00	1,050.00	1,124.00	1,295.00	1,364.00	1,464.00
Increase from Prior Year	3.0%	3.1%	7.3%	7.0%	15.2%	5.3%	7.3%
Board (6)	1,266.53	1,304.41	1,342.30	1,383.44	1,460.29	1,493.18	1,476.53
Increase from Prior Year	5.1%	3.0%	2.9%	3.1%	5.6%	2.3%	-1.1%

Increase in Semester Charges from 1997-98 to 2003-04:

Tuition, per semester hour	50.0%
Room	54.1%
Board	16.6%

Notes:

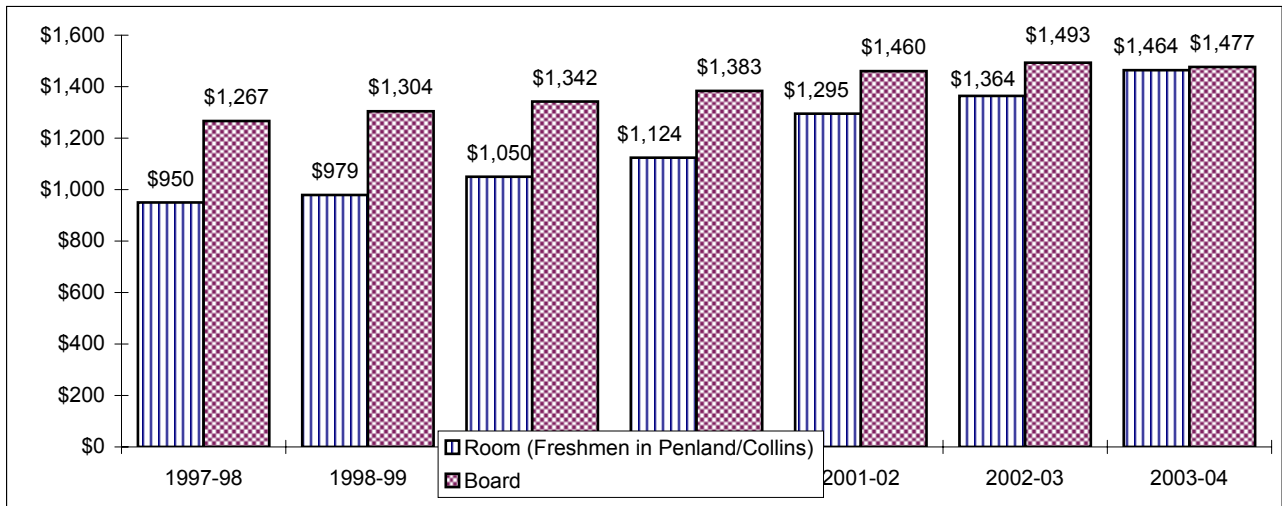
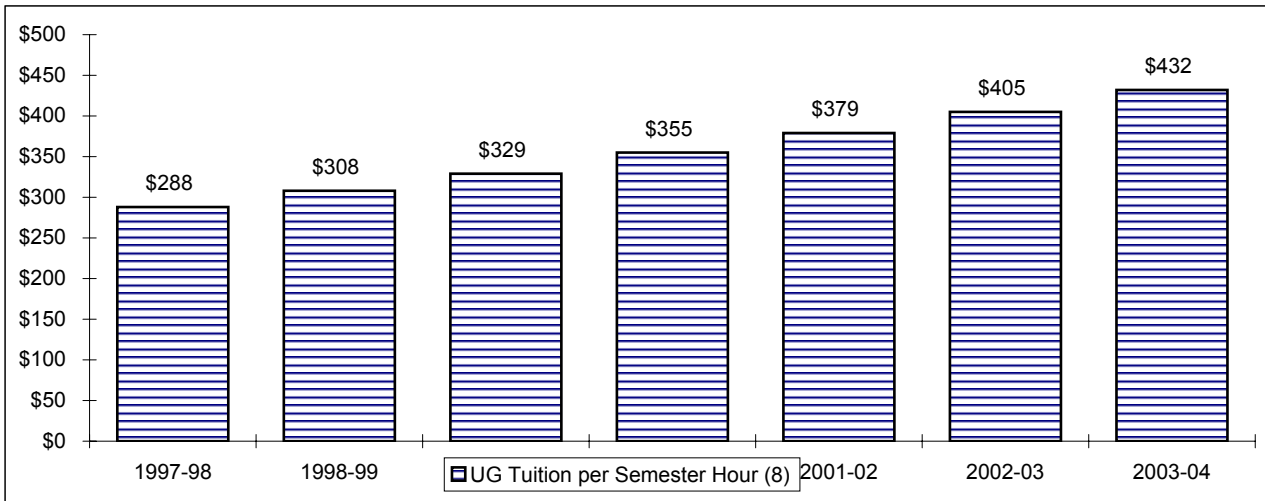
(1) Supplemental charge per semester for one 30-minute lesson per week.

(2) In 1998, the General University Deposit became an Enrollment Deposit. The Enrollment Deposit is paid to assure enrollment place and is applied on the student's first semester bill.

(3) Minimum lab fee is \$35; some courses may be higher.

(4) Fee is graduated: \$20.00 first through third class days, \$30.00 fourth through ninth class days, \$50.00 tenth class day.

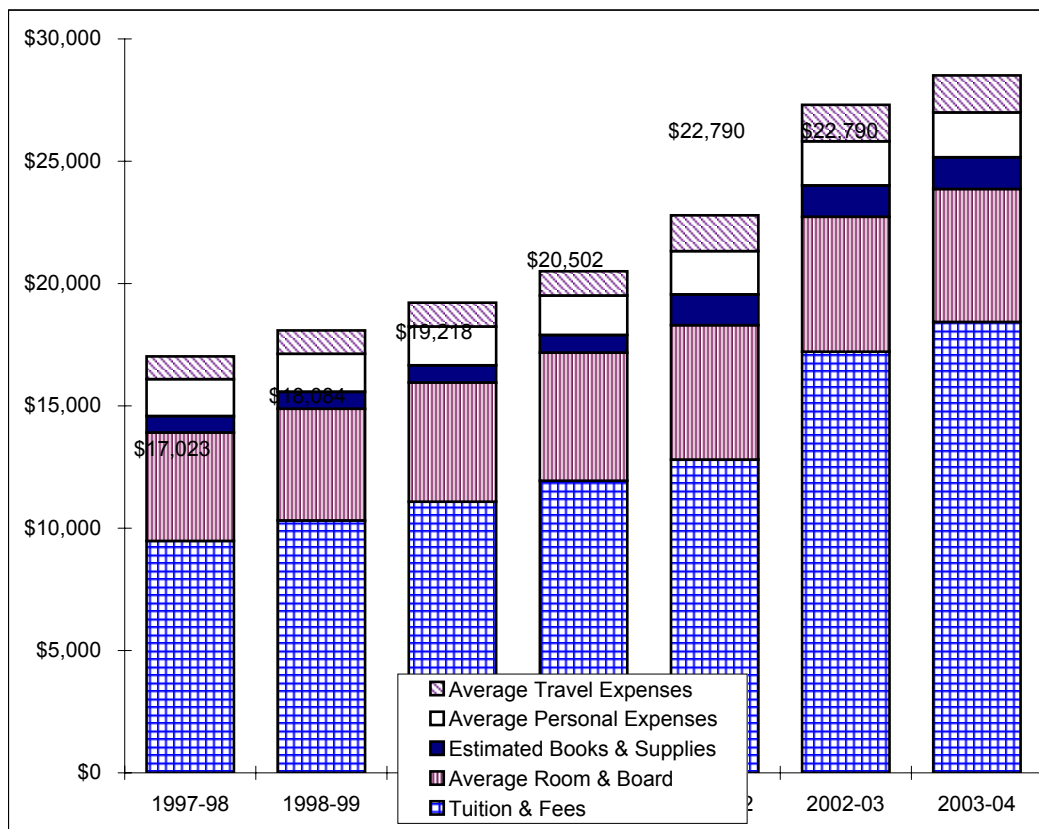
Tuition, Room and Board Charges 1997-98 through 2003-04



See notes on page 28.

Annual Undergraduate Student Cost Profile 1997-98 through 2003-04

	1997-98	1998-99	1999-00	2000-01	2001-02	2002-03	2003-04
Tuition & Fees	\$9,478	\$10,316	\$11,082	\$11,940	\$12,804	\$17,214	\$18,430
Average Room & Board	4,433	4,566	4,874	5,238	5,494	5,514	5,434
Estimated Books & Supplies	670	690	702	716	1,256	1,280	1,298
Average Personal Expenses	1,512	1,556	1,586	1,616	1,772	1,806	1,832
Average Travel Expenses	930	956	974	992	1,464	1,492	1,514
Average Total Cost	\$17,023	\$18,084	\$19,218	\$20,502	\$22,790	\$27,306	\$28,508
Increase from Prior Year	5.8%	6.2%	6.3%	6.7%	11.2%	19.8%	4.4%



**Operating Funds (Continued)
1996-97 through 2002-03**

Expenditures by Function

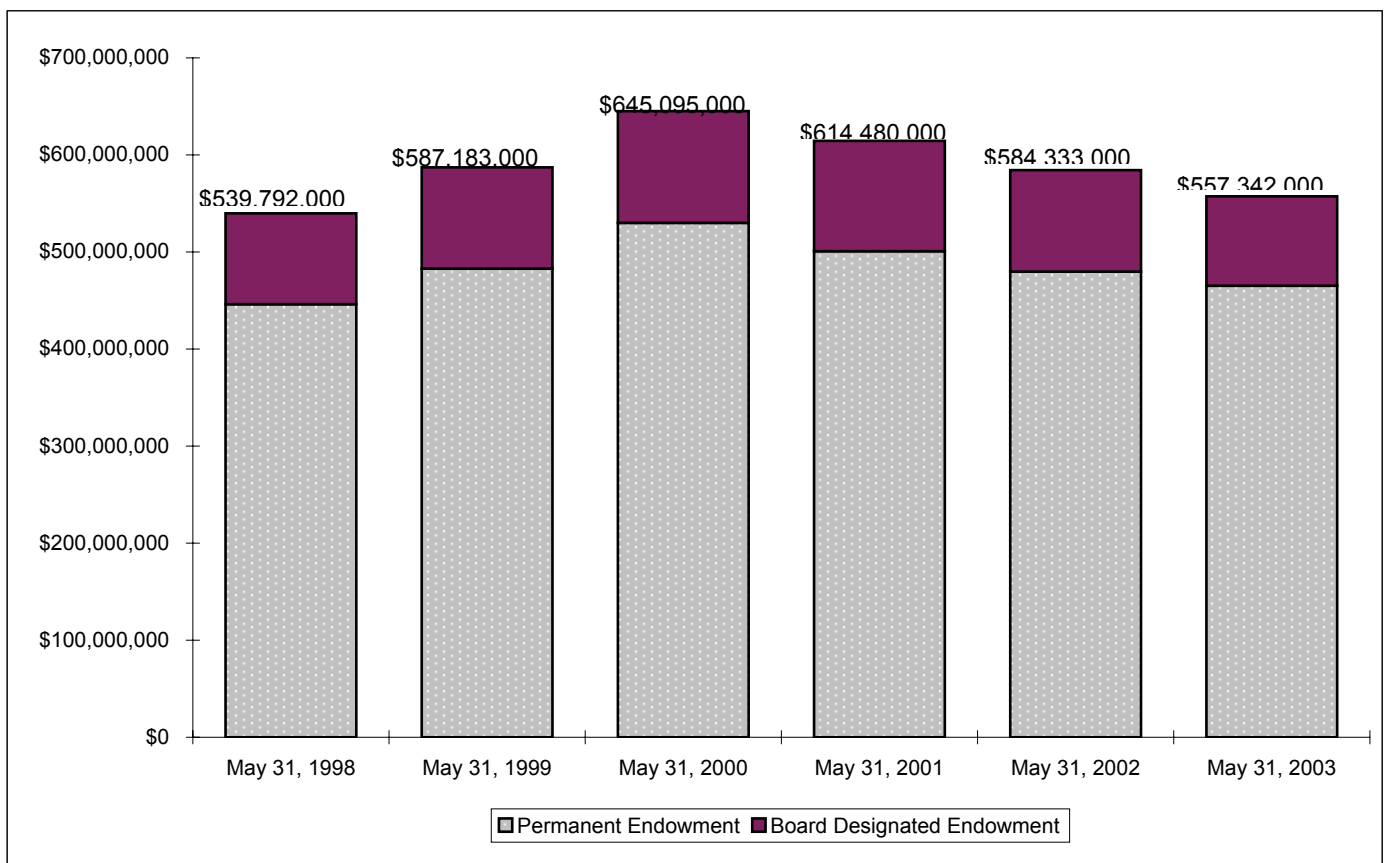
	1996-97	1997-98	1998-99	1999-00	2000-01	2001-02	2002-03
Instruction	\$64,887,596	\$69,394,793	\$73,484,863	\$78,132,224	\$82,621,971	\$92,355,519	\$102,617,463
Acad Support, Res. & Pub. Srv.	13,226,633	13,945,393	16,847,590	18,662,339	20,363,667	23,117,511	24,666,809
Student Services	10,569,350	9,473,902	9,152,085	11,165,359	11,798,452	12,849,698	14,779,593
Plant Operations & Maintenance	10,138,633	10,429,262	11,889,750	14,220,616	16,020,525	19,608,685	22,537,742
Institutional Support	17,944,285	18,169,021	23,709,606	26,511,017	28,859,740	35,095,190	37,986,315
Scholarships & Fellowships	11,606,819	12,954,165	15,630,383	18,955,785	21,932,892	27,598,589	37,529,834
Auxiliary Enterprises	26,926,149	30,842,634	35,375,307	37,884,043	42,264,498	45,428,872	46,541,207
Discretionary Transfers	6,984,749	13,572,228	17,318,040	16,453,711	21,600,154	2,497,935	(2,560,253)
Total Expenditures	162,284,214	178,781,398	203,407,624	221,985,094	245,461,899	258,551,999	284,098,710
Excess Revenues	\$21,204	\$25,436	\$18,363	\$19,114	\$23,428	\$12,282	\$16,052

**Expenditures by Function as a
Percentage of Total Expenditures**

	1996-97	1997-98	1998-99	1999-00	2000-01	2001-02	2002-03
Instruction	40.0%	38.8%	36.1%	35.2%	33.7%	35.7%	36.1%
Acad Support, Res. & Pub. Srv.	8.2%	7.8%	8.3%	8.4%	8.3%	8.9%	8.7%
Student Services	6.5%	5.3%	4.5%	5.0%	4.8%	5.0%	5.2%
Plant Operations & Maintenance	6.2%	5.8%	5.8%	6.4%	6.5%	7.6%	7.9%
Institutional Support	11.1%	10.2%	11.7%	11.9%	11.8%	13.6%	13.4%
Scholarships & Fellowships	7.2%	7.2%	7.7%	8.5%	8.9%	10.7%	13.2%
Auxiliary Enterprises	16.6%	17.3%	17.4%	17.1%	17.2%	17.6%	16.4%
Discretionary Transfers	4.3%	7.6%	8.5%	7.4%	8.8%	1.0%	-0.9%
Total Expenditures	100.0%	100.0%	100.0%	100.0%	100.0%	100.0%	100.0%

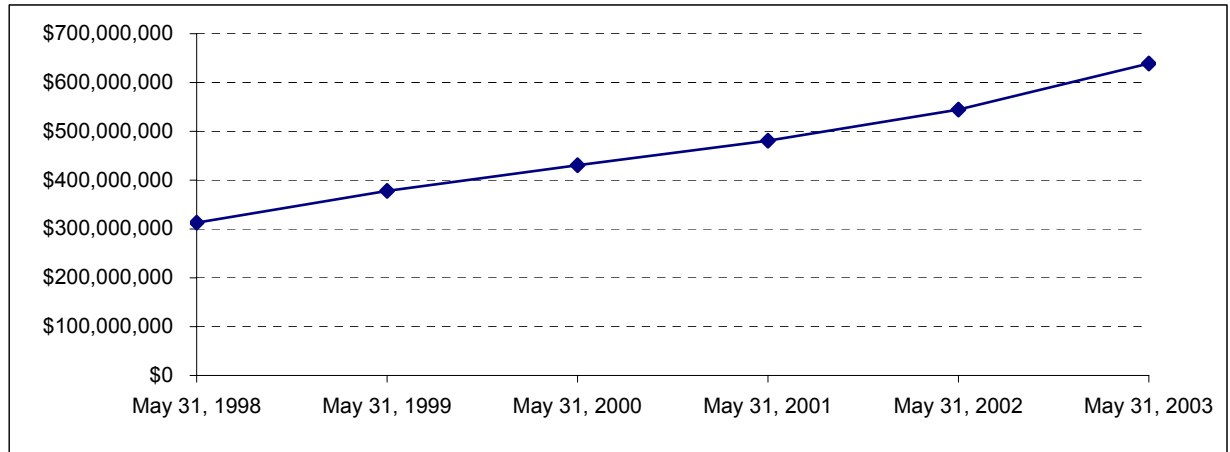
**Endowment Fund Balance - Market Value
May 31, 1998 through May 31, 2003**

	May 31, 1998	May 31, 1999	May 31, 2000	May 31, 2001	May 31, 2002	May 31, 2003
Permanent Endowment	\$446,150,000	\$482,807,000	\$529,979,000	\$500,739,000	\$479,728,000	\$465,189,000
Board Designated Endowment	93,642,000	104,376,000	115,116,000	113,741,000	104,605,000	92,153,000
Total Endowment	\$539,792,000	\$587,183,000	\$645,095,000	\$614,480,000	\$584,333,000	\$557,342,000
Permanent Endowment	82.7%	82.2%	82.2%	81.5%	82.1%	83.5%
Board Designated Endowment	17.3%	17.8%	17.8%	18.5%	17.9%	16.5%
Total Endowment	100.0%	100.0%	100.0%	100.0%	100.0%	100.0%



Property, Plant and Equipment* May 31, 1998 through May 31, 2003

Property, Plant & Equipment	May 31, 1998	May 31, 1999	May 31, 2000	May 31, 2001	May 31, 2002
	\$312,970,000	\$378,059,000	\$430,619,000	\$480,878,000	\$544,541,000



*Does not reflect the impact of accumulated depreciation.

Assets May 31, 1998 through May 31, 2003

	May 31, 1998	May 31, 1999	May 31, 2000	May 31, 2001	May 31, 2002
Net Assets	\$780,752,000	\$855,595,000	\$941,304,000	\$945,490,000	\$899,185,000
Total Assets	\$841,823,000	\$951,390,000	\$1,043,535,000	\$1,056,374,000	\$1,238,399,000

