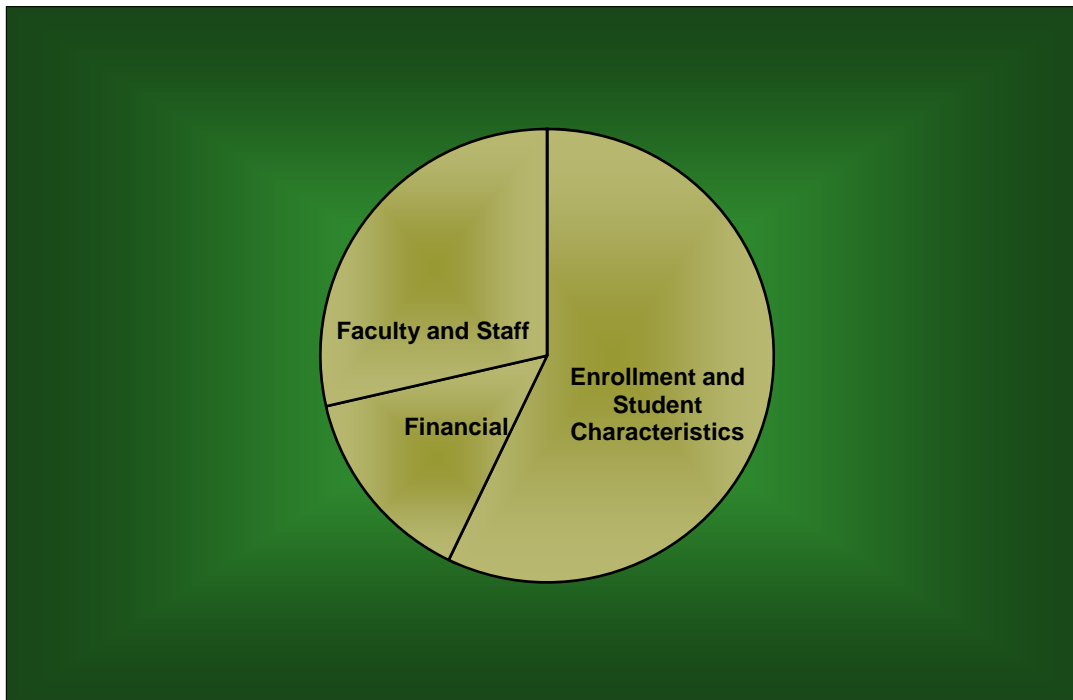


BAYLOR TRENDS



Fall 2005 - Fall 2011

Volume XXIII

Prepared by the Office of Institutional Research and Testing, Fall 2011

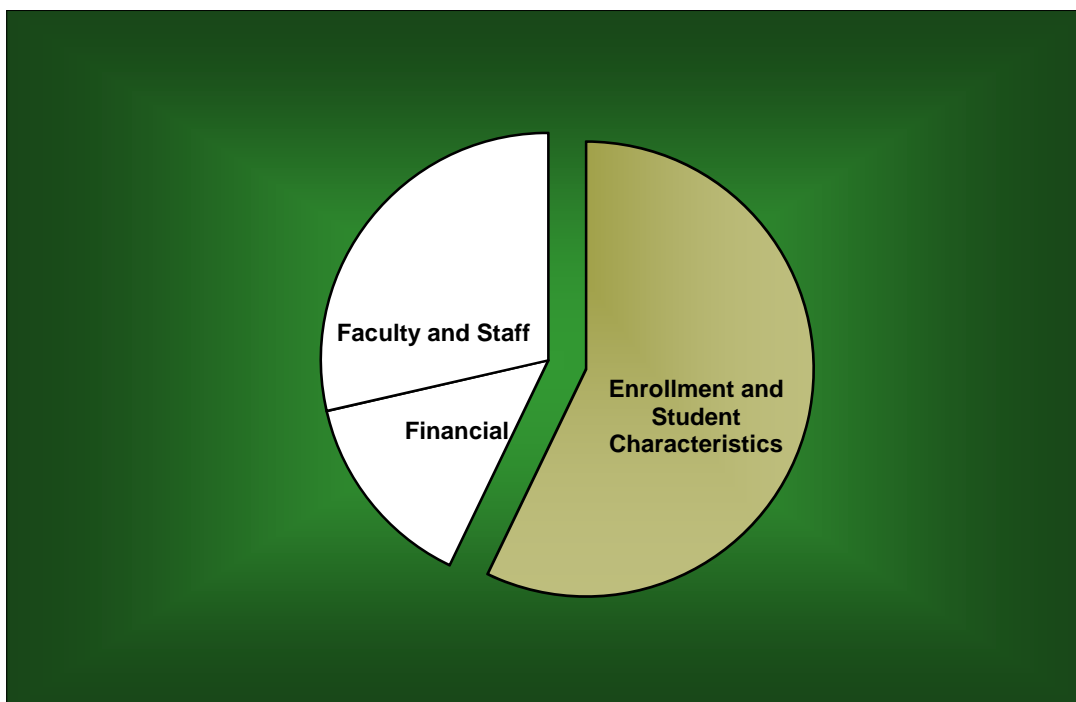
<http://www.baylor.edu/irt/>

Table of Contents

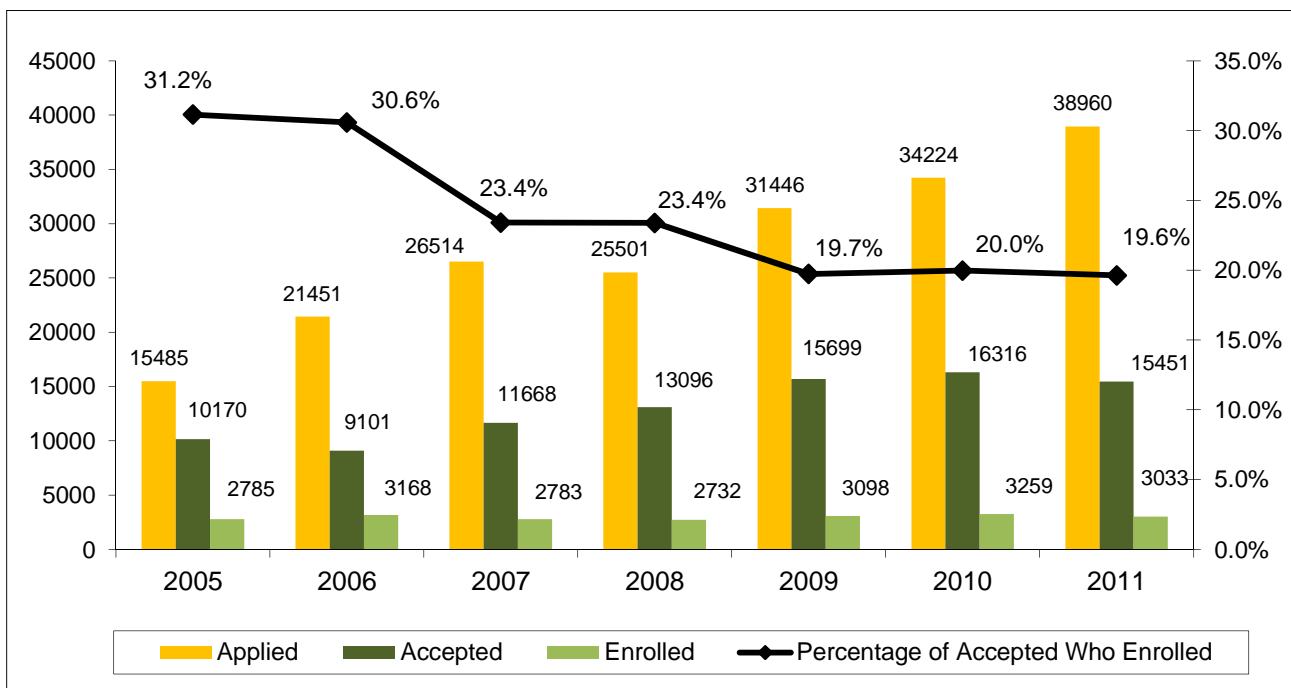
	Page
ENROLLMENT AND STUDENT CHARACTERISTICS	
<i>New Freshman Applications, Acceptances and Enrollment</i>	5
<i>Transfer Applications, Acceptances and Enrollment</i>	5
<i>New Freshman Applications and Enrollment by Gender</i>	6
<i>New Freshman and Transfer Student Enrollment</i>	7
<i>Headcount Enrollment by Classification</i>	8
<i>Enrollment</i>	9
<i>Enrollment by Gender, Excluding Military Programs</i>	10
<i>Enrollment by Religious Affiliation, Excluding Military Programs</i>	11
<i>Baptist Percentage, Excluding Military Programs</i>	11
<i>Enrollment by Racial/Ethnic Group</i>	12
<i>Racial/Ethnic Minority Percentage</i>	12
<i>Enrollment by Race and Gender</i>	13
<i>Program Enrollment by Unit, Level, and Race</i>	14
<i>Program Enrollment by Unit, Level, and Gender</i>	20
<i>National Merit Scholars</i>	23
<i>Average SAT Scores for First-Time Freshmen</i>	24
<i>Average ACT Scores for First-Time Freshmen</i>	24
<i>Leading Texas Counties of Origin</i>	25
<i>Leading States of Origin</i>	25
<i>Percentage from Top Four Texas Counties</i>	26
<i>Students from Texas by County</i>	26
<i>Texas Enrollment by County</i>	27
<i>Enrollment by State</i>	28
<i>Enrollment by State – Map</i>	29
<i>Countries Represented by Nonresident Aliens</i>	30
<i>Headcount Enrollment by Unit</i>	31
<i>Program Enrollment by Unit</i>	31
<i>Headcount Enrollment Percentage by Unit</i>	32
<i>Student Credit Hours by Unit, Excluding Military Programs</i>	33
<i>Retention of First-Time Freshman Classes</i>	34
<i>Distribution of Degrees</i>	35
<i>Summary of Degrees Awarded</i>	36
<i>Degree Programs</i>	37
<i>Profile of First-Time Freshmen</i>	39
<i>Profile of Undergraduate Transfers</i>	40
<i>Profile of Undergraduate Students</i>	41
<i>Profile of Students in the Graduate School</i>	42
<i>Profile of Students in the School of Social Work</i>	43
<i>Profile of Law Students</i>	44
<i>Profile of Seminary Students</i>	45

	Page
FACULTY AND STAFF	
<i>Full-Time Faculty Positions</i>	47
<i>Highest Degree Earned by Full-Time Faculty</i>	47
<i>Percentage of Full-Time Faculty with Tenure</i>	48
<i>Average Salaries of Full-Time Instructional Faculty on Academic Year Contracts</i>	49
<i>Average Compensation of Full-Time Instructional Faculty on Academic Year Contracts</i>	50
<i>Institutional Staff</i>	51
<i>Percentage of Institutional Staff</i>	51
<i>Full-Time Faculty by Religious Affiliation</i>	52
<i>Full-Time Staff by Religious Affiliation</i>	52
 FINANCIAL	
<i>Undergraduate Tuition and Other Semester Charges</i>	54
<i>Undergraduate Tuition, Room and Board Charges</i>	55
<i>Annual Undergraduate Student Cost Profile</i>	56
<i>Operating Funds:</i>	
<i>Sources of Revenues</i>	57
<i>Sources of Revenue as a Percentage of Total Revenues</i>	57
<i>Expenditures by Function & Transfers</i>	58
<i>Expenditures by Function as a Percentage of Total Expenditures</i>	58
<i>Endowment Fund Balance - Market Value</i>	59
<i>Property, Plant and Equipment</i>	60
<i>Assets</i>	60

Enrollment and Student Characteristics

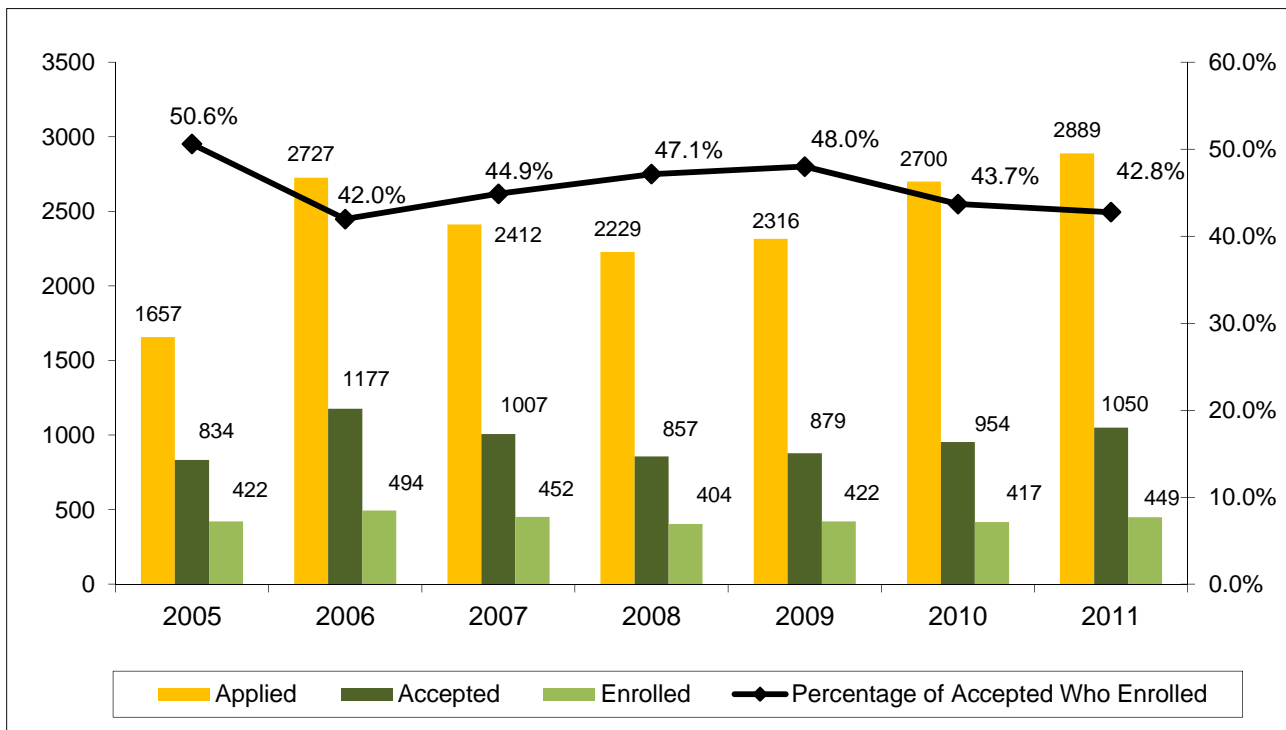


New Freshman Applications, Acceptances and Enrollment Fall 2005 - Fall 2011

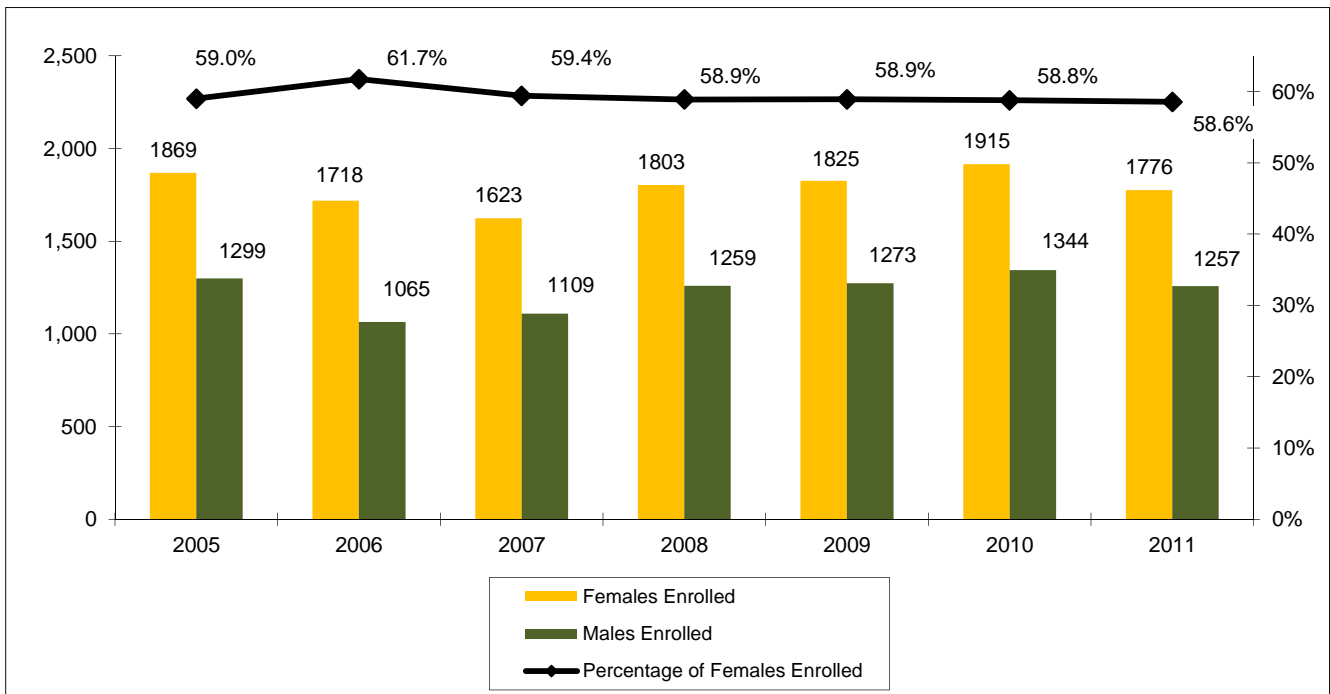
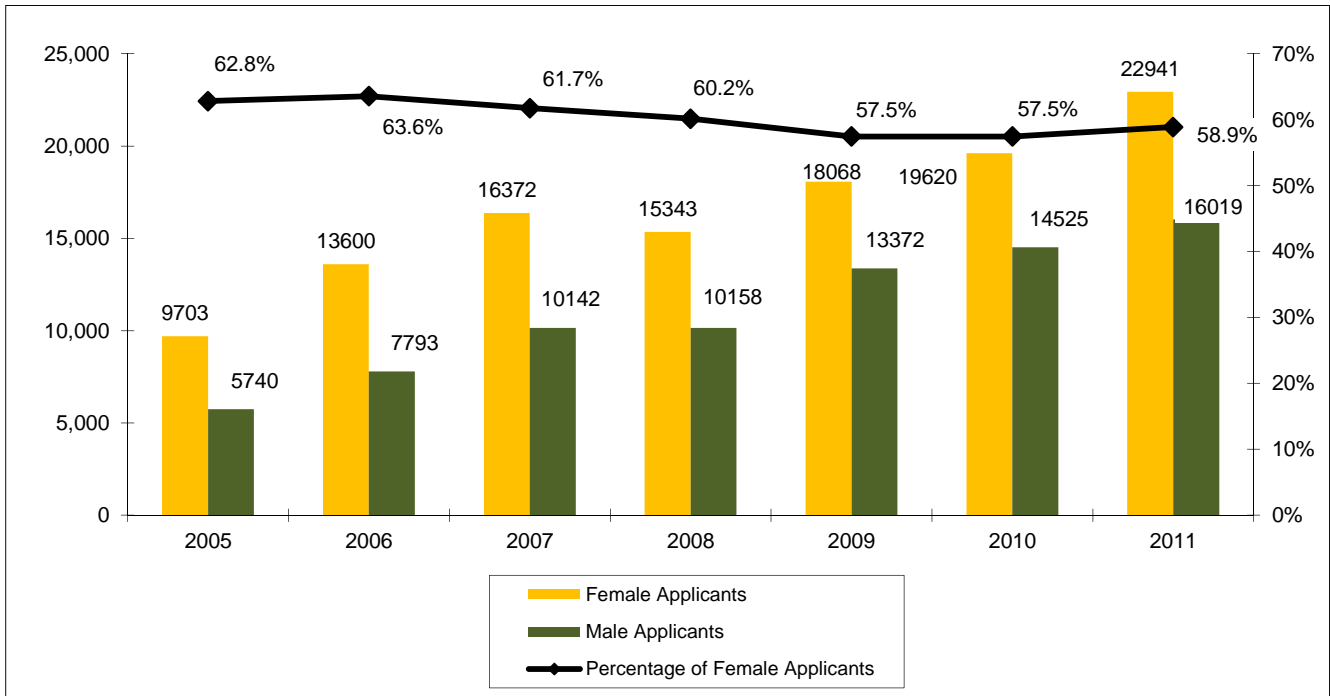


Corrected above chart for error in "Enrolled" numbers on 1/10/2012.

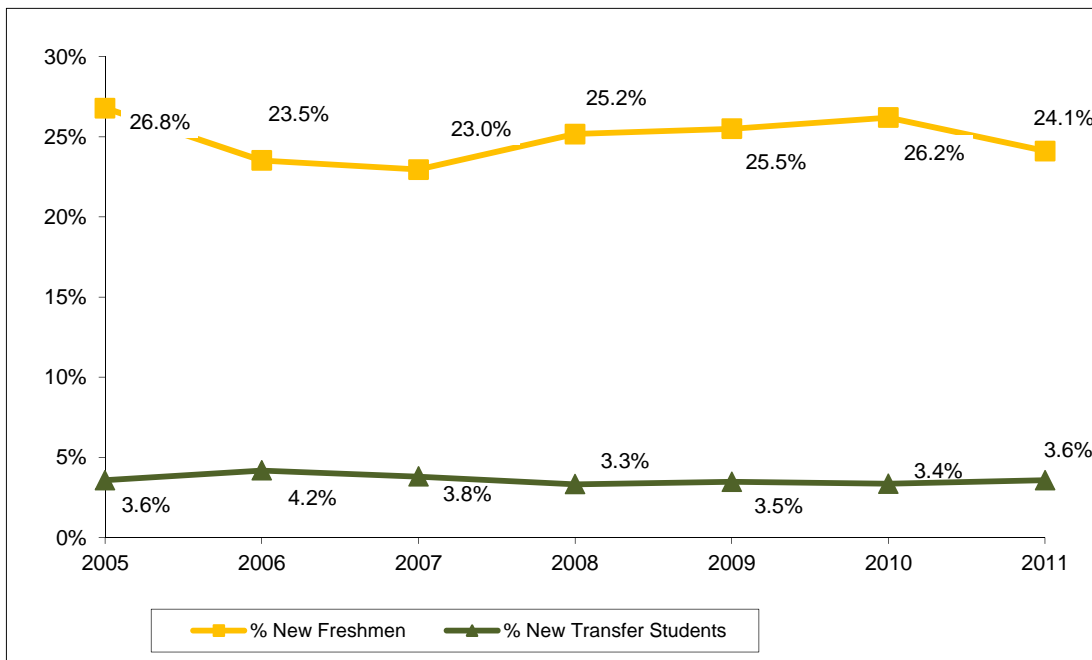
Transfer Applications, Acceptances and Enrollment Fall 2005 - Fall 2011



New Freshman Applications and Enrollment by Gender*
Fall 2005 - Fall 2011



**New Freshman and Transfer Student Enrollment
Fall 2005 - Fall 2011**



	Fall	2005	2006	2007	2008	2009	2010	2011
New Freshmen		3,168	2,783	2,732	3,062	3,098	3,259	3,033
New Transfer Students		422	494	452	404	422	417	449
Undergraduate Enrollment		11,825	11,831	11,902	12,162	12,149	12,438	12,575
% New Freshmen		26.8%	23.5%	23.0%	25.2%	25.5%	26.2%	24.1%
% New Transfer Students		3.6%	4.2%	3.8%	3.3%	3.5%	3.4%	3.6%

Notes:

1. Freshmen who enter the University in the fall or preceding summer term are counted as "new freshmen." Similarly, transfer students entering in the fall or preceding summer term are counted as "transfer students" for the fall semester.

2. "Transfer students" refers to the entering summer/fall group of transfer students. For example, in Fall 2011 the 449 entering transfer students comprised 3.6% of the 12,575 undergraduates. However, for Fall 2011 the total number of enrolled undergraduates who had transferred into the University consisted of (a) transfers who entered in Fall 2011 and (b) students who transferred into the University in previous academic years. Generally, the total enrollment of students who had entered as transfer students is approximately 15% of the undergraduate student body.

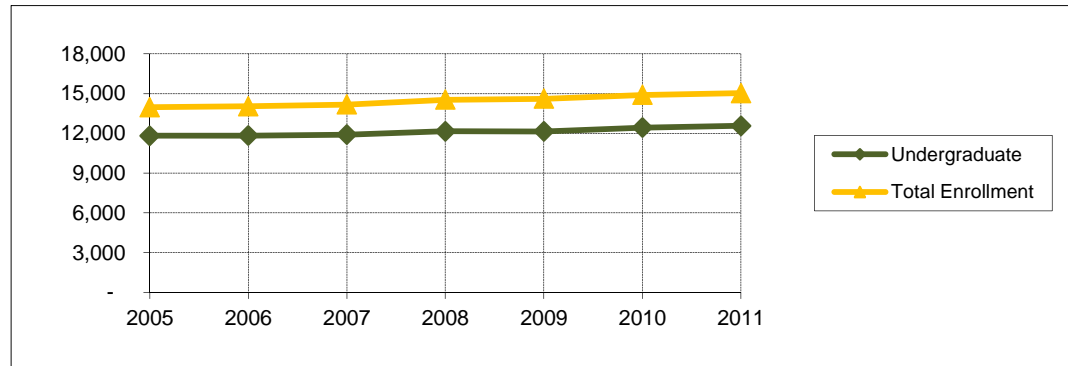
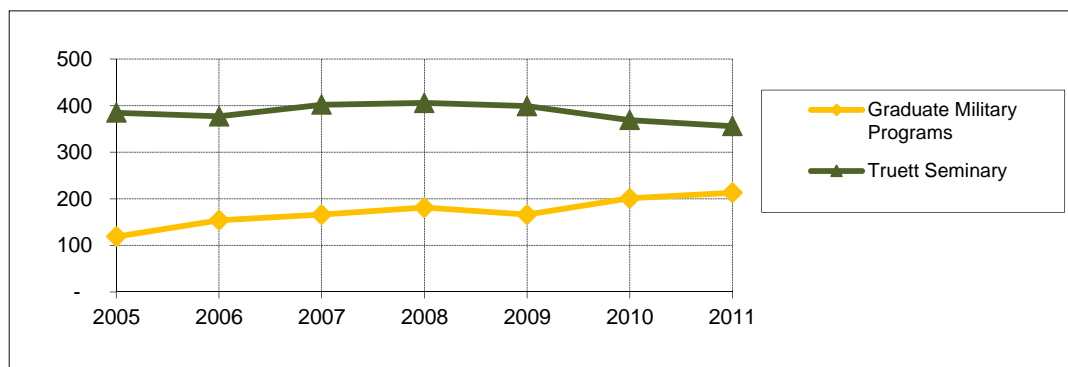
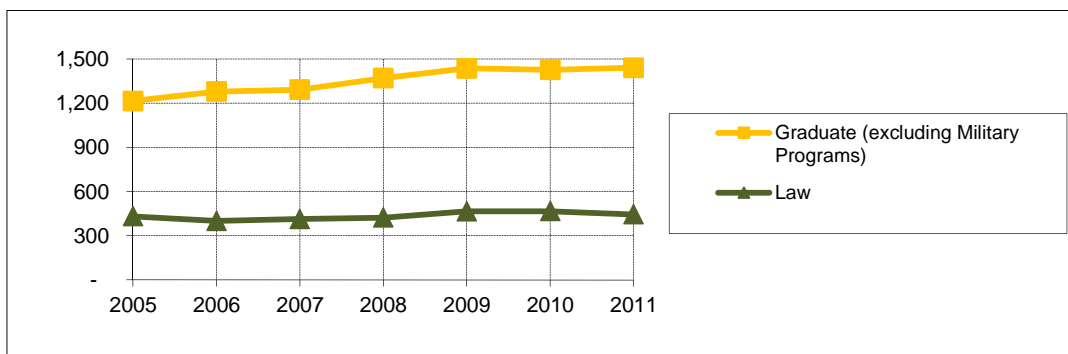
**Headcount Enrollment by Classification
Fall 2005 - Fall 2011**

Fall	2005	2006	2007	2008	2009	2010	2011
Freshman	3,791	3,524	3,315	3,522	3,616	3,811	3,576
Sophomore	2,529	2,833	2,683	2,557	2,623	2,602	2,878
Junior	2,295	2,481	2,652	2,604	2,464	2,602	2,623
Senior	3,080	2,896	3,159	3,383	3,338	3,269	3,342
Special	-	-	-	-	-	-	-
Postbaccalaureate	84	69	61	68	81	125	122
Nondegree	46	28	32	28	27	29	34
TOTAL UNDERGRADUATE	11,825	11,831	11,902	12,162	12,149	12,438	12,575
Master's	720	778	783	833	862	828	830
Doctoral	473	473	483	502	541	561	579
Graduate Transient/Nondegree	10	9	9	13	9	13	8
Graduate Professional	11	18	16	21	23	24	23
TOTAL "WACO" GRADUATE	1,214	1,278	1,291	1,369	1,435	1,426	1,440
Seminary Master's	344	334	365	367	364	330	319
Seminary Doctoral	39	42	36	38	35	39	37
Nondegree	2	1	1	1	-	-	-
TOTAL SEMINARY	385	377	402	406	399	369	356
School of Law	432	400	413	423	465	466	445
Graduate Military Programs	119	154	166	181	166	201	213
TOTAL ENROLLMENT	13,975	14,040	14,174	14,541	14,614	14,900	15,029

Notes:

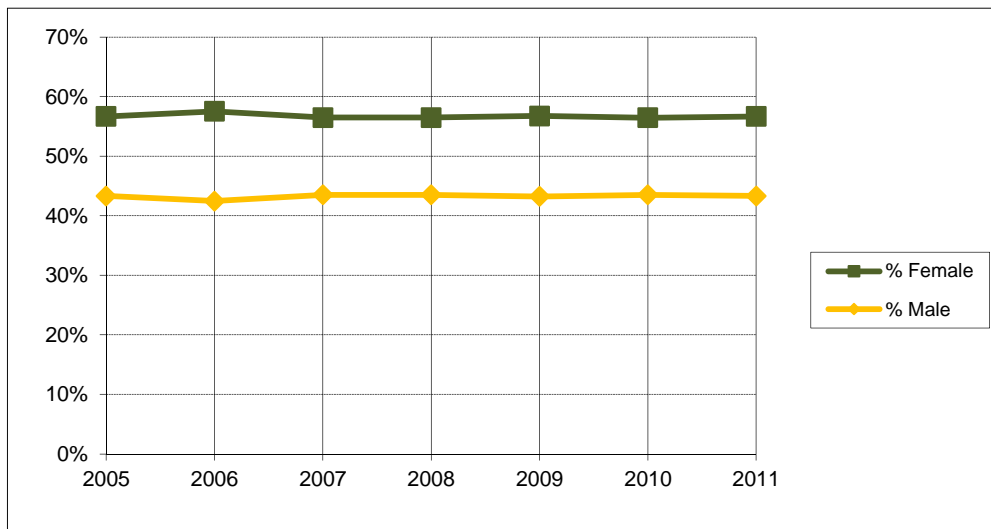
1. Headcount counts a student once in their primary program.

Enrollment
Fall 2005 - Fall 2011



	Fall	2005	2006	2007	2008	2009	2010	2011
Undergraduate		11,825	11,831	11,902	12,162	12,149	12,438	12,575
Graduate (excluding Military Programs)		1,214	1,278	1,291	1,369	1,435	1,426	1,440
Law		432	400	413	423	465	466	445
Truett Seminary		385	377	402	406	399	369	356
SUBTOTAL		13,856	13,886	14,008	14,360	14,448	14,699	14,816
Graduate Military Programs		119	154	166	181	166	201	213
TOTAL ENROLLMENT		13,975	14,040	14,174	14,541	14,614	14,900	15,029

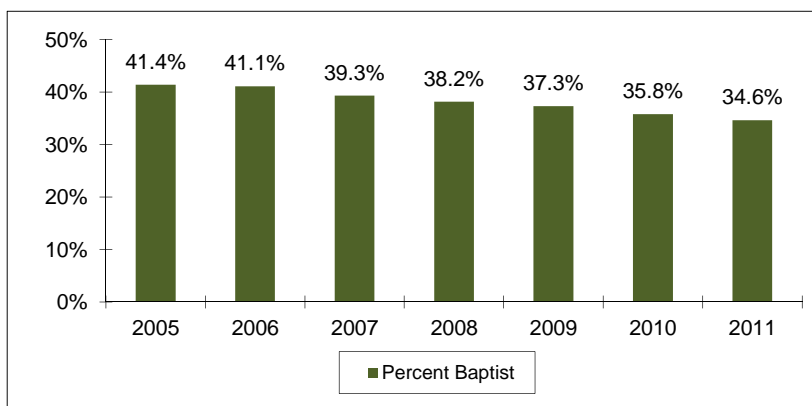
**Enrollment by Gender
(Excluding Military Programs)
Fall 2005 - Fall 2011**



	Fall	2005	2006	2007	2008	2009	2010	2011
Female		7,854	7,990	7,912	8,113	8,199	8,301	8,397
Male		6,002	5,896	6,096	6,247	6,249	6,398	6,419
Total (excluding Military Programs)		13,856	13,886	14,008	14,360	14,448	14,699	14,816
% Female		56.7%	57.5%	56.5%	56.5%	56.7%	56.5%	56.7%
% Male		43.3%	42.5%	43.5%	43.5%	43.3%	43.5%	43.3%

**Enrollment by Religious Affiliation (Excluding Military Programs)
Fall 2005 - Fall 2011**

Fall	2005	2006	2007	2008	2009	2010	2011
African Methodist Episcopal	7	5	5	7	5	8	9
Anglican - Church of England	11	9	7	14	15	21	32
Assembly of God	130	129	131	129	144	158	158
Atheist	16	22	20	33	35	43	49
Baptist	5738	5710	5511	5482	5396	5262	5132
Buddhist	76	79	76	80	82	84	81
Catholic	1833	1788	1805	1923	1994	2101	2190
Christian Church	84	86	123	149	167	296	402
Christian Scientist	15	15	9	8	6	5	6
Church of Christ	257	259	253	241	270	268	263
Church of God	27	29	31	28	28	21	24
Church of the Nazarene	28	34	35	38	35	29	28
Congregational Church	17	14	10	6	7	9	9
Disciples of Christ (Christian)	86	91	101	107	109	100	86
Dutch Reformed	2	4	4	5	5	4	8
Eastern Orthodox	35	37	43	50	47	54	43
Episcopalian	256	262	253	279	274	253	236
Evangelical Free Church	25	36	43	51	42	86	95
Four Square Gospel	12	10	15	11	13	14	12
Full Gospel	4	3	3	2	3	7	7
Greek Orthodox	7	5	6	4	6	6	10
Hindu	115	103	101	113	120	125	120
Independent Bible Church	19	21	24	28	29	32	45
Interdenominational	167	98	79	83	72	56	103
Jehovah's Witness	11	8	9	12	13	12	12
Jewish	11	11	10	26	21	21	26
Judaism	21	14	15	-	-	-	-
Latter Day Saints (Mormon)	48	39	26	31	32	35	34
Lutheran	364	371	368	399	398	402	446
Mennonite	10	5	7	6	8	6	8
Methodist	1099	1074	1095	1168	1182	1148	1097
Missionary Alliance	2	5	7	8	10	15	13
Moslem (Islam, Muslim)	117	133	124	131	119	122	131
Non-Denominational	1444	1703	1911	2080	2110	2090	2069
Pentecostal	112	99	110	124	119	126	125
Presbyterian	549	569	571	601	583	603	597
Protestant	54	53	68	81	91	131	162
Seventh Day Adventist	12	11	13	10	14	19	21
Society of Friends (Quakers)	3	2	2	4	6	5	6
Unitarian	4	3	6	10	10	10	11
United Brethren	2	2	1	1	-	-	-
United Church of Christ	6	5	3	4	4	4	4
Other/Not Specified	1020	930	974	793	824	908	906
TOTAL RELIGION	13856	13886	14008	14360	14448	14699	14816



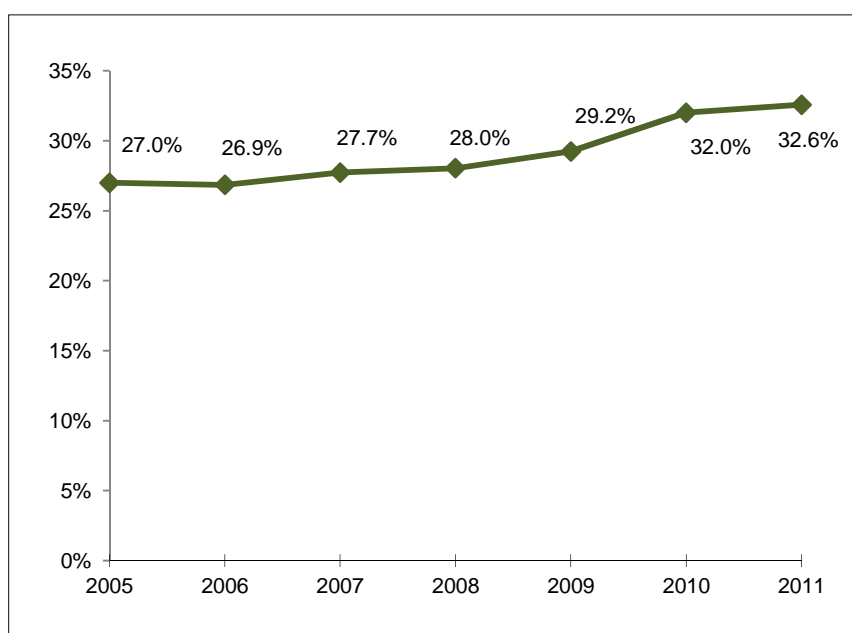
**Enrollment by Racial / Ethnic Group*
Fall 2005 - Fall 2011**

	Fall	2005	2006	2007	2008	2009	2010	2011
African American/Black		1,048	1,036	1,046	1,077	1,119	1,094	1,126
American Indian/Alaskan Native		93	88	90	110	108	56	43
Asian		-	-	-	-	-	1,187	1,200
Asian/Pacific Islander		1,044	1,050	1,127	1,132	1,166	-	-
Hispanic		1,284	1,301	1,375	1,464	1,585	1,847	1,887
Pacific Islander		-	-	-	-	-	15	9
White		10,183	10,249	10,221	10,448	10,285	10,064	10,033
Multiracial		-	-	-	-	-	570	631
Other		304	295	293	294	296	-	-
Not Specified		19	21	22	16	55	67	100
Total		13,975	14,040	14,174	14,541	14,614	14,900	15,029

* In 2010, in order to fulfill new federal government reporting requirements on race and ethnicity, students were given the opportunity to select multiple race categories. In addition, Pacific Islander was designated as its own category (separate from Asian). The students were asked two questions. The first question asked the student "Are you Hispanic/Latino?" The second question allowed students to select among five race categories, with multiple responses allowed.

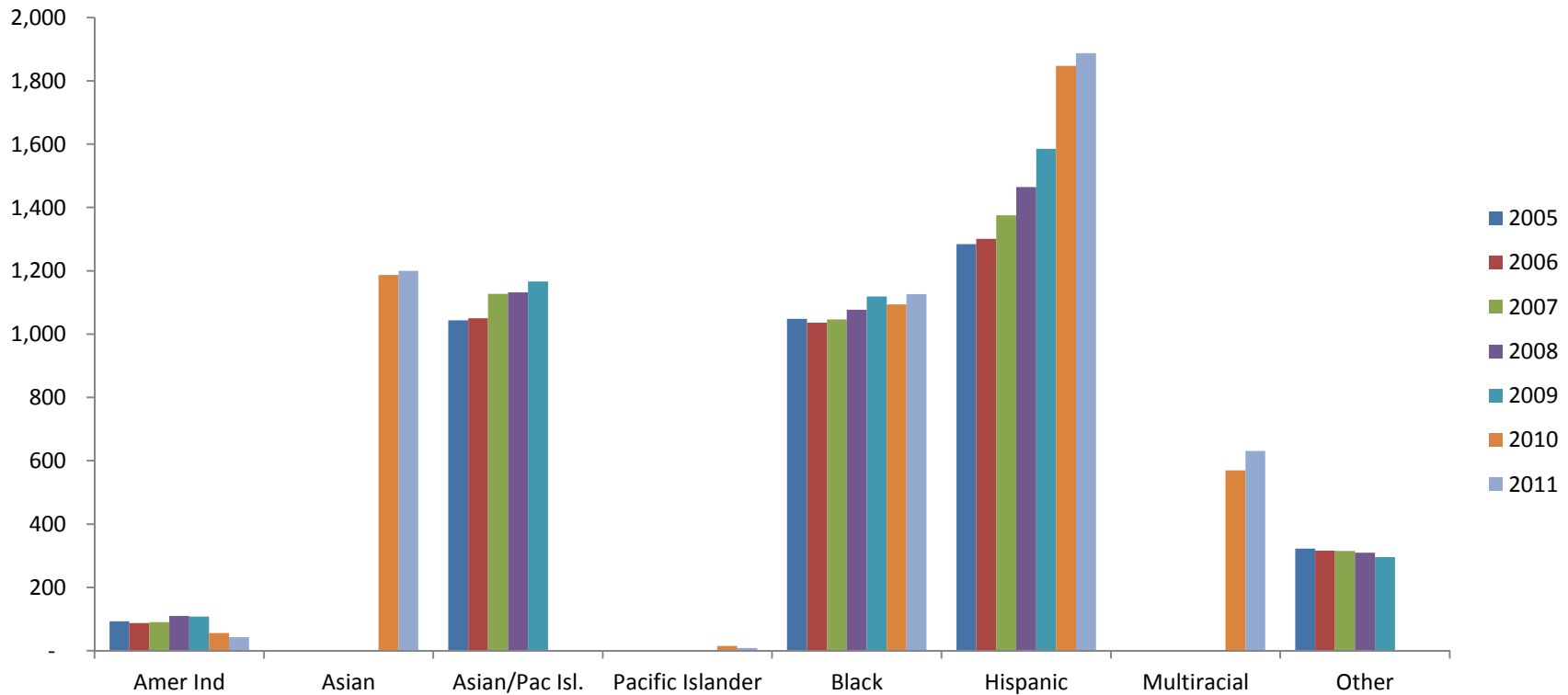
In this table, students are counted in only one race/ethnic group category. If the student indicated "yes" to the first question, the student was categorized as Hispanic (only) regardless of any race code(s) they may have selected. If the student marked more than one race (and "no" to Hispanic/Latino in the first question), he/she was reported in the category of Multiracial.

**Fall 2005 - Fall 2011
Racial / Ethnic Minority Percentage**



Enrollment by Race and Gender *
Fall 2005 - Fall 2011

YEAR	Total			Alaskan Native/ American Indian			Asian			Asian/ Pacific Islander			Pacific Islander			African Amer./ Black			Hispanic			White			Multiracial			Other		
	All	M	F	All	M	F	All	M	F	All	M	F	All	M	F	All	M	F	All	M	F	All	M	F	All	M	F			
	2005	13975	6089	7886	93	42	51	-	-	-	1044	492	552	-	-	-	1048	384	664	1284	536	748	10183	4493	5690	-	-	-	323	142
2006	14040	5999	8041	88	35	53	-	-	-	1050	480	570	-	-	-	1036	385	651	1301	522	779	10249	4437	5812	-	-	-	316	140	176
2007	14174	6200	7974	90	36	54	-	-	-	1127	513	614	-	-	-	1046	394	652	1375	584	791	10221	4533	5688	-	-	-	315	140	175
2008	14541	6364	8177	110	47	63	-	-	-	1132	509	623	-	-	-	1077	411	666	1464	613	851	10448	4642	5806	-	-	-	310	142	168
2009	14614	6349	8265	108	45	63	-	-	-	1166	550	616	-	-	-	1119	395	724	1585	652	933	10285	4553	5732	-	-	-	296	120	176
2010	14833	6471	8362	56	25	31	1187	559	628	-	-	-	15	6	9	1094	397	697	1847	765	1082	10064	4491	5573	570	228	342	-	-	-
2011	14929	6486	8443	43	18	25	1200	561	639	-	-	-	9	5	4	1126	415	711	1887	773	1114	10033	4453	5580	631	261	370	-	-	-



* Please see note on page 12.

**Program Enrollment by Unit, Level, and Race
Fall 2005 - Fall 2011**

	2005	2006	2007	2008	2009	2010	2011
College of Arts & Sciences							
UG Total	6,709	6,503	6,410	6,490	6,448	6,553	6,497
African American / Black	630	573	533	567	563	553	565
Alaskan Native / Amer. Indian	45	48	46	56	52	27	18
Asian	-	-	-	-	-	617	601
Asian / Pacific Islander	590	587	605	581	612	-	-
Hispanic	742	756	789	813	870	1,018	1,016
Pacific Islander	-	-	-	-	-	6	4
White	4,529	4,388	4,285	4,319	4,182	4,041	3,978
Multiracial	-	-	-	-	-	291	315
Other	172	151	152	154	149	-	-
Not Specified	1	-	-	-	20	-	-
GR Total	600	637	627	631	647	674	660
African American / Black	11	9	11	10	8	11	8
Alaskan Native / Amer. Indian	4	4	3	6	8	4	2
Asian	-	-	-	-	-	83	76
Asian / Pacific Islander	66	59	70	70	72	-	-
Hispanic	52	49	40	43	34	39	32
Pacific Islander	-	-	-	-	-	-	-
White	453	495	485	489	510	517	521
Multiracial	-	-	-	-	-	20	21
Other	14	20	17	13	13	-	-
Not Specified	-	1	1	-	2	-	-
School of Business							
UG Total	2,583	2,647	2,683	2,767	2,670	2,650	2,726
African American / Black	122	149	168	146	153	136	144
Alaskan Native / Amer. Indian	15	16	18	16	12	6	7
Asian	-	-	-	-	-	181	210
Asian / Pacific Islander	136	146	156	171	148	-	-
Hispanic	196	185	199	215	232	267	297
Pacific Islander	-	-	-	-	-	2	2
White	2,076	2,108	2,085	2,169	2,077	1,974	1,969
Multiracial	-	-	-	-	-	84	97
Other	38	42	55	50	43	-	-
Not Specified	-	1	2	-	5	-	-
GR Total	232	257	279	294	346	324	334
African American / Black	12	17	23	26	24	16	24
Alaskan Native / Amer. Indian	-	-	-	1	2	1	1
Asian	-	-	-	-	-	33	41
Asian / Pacific Islander	43	46	42	39	46	-	-
Hispanic	13	9	21	22	26	25	37
Pacific Islander	-	-	-	-	-	1	1
White	157	169	171	199	234	242	225
Multiracial	-	-	-	-	-	6	5
Other	5	13	12	7	6	-	-
Not Specified	2	3	10	-	8	-	-

**Program Enrollment by Unit, Level, and Race
Fall 2005 - Fall 2011**

	2005	2006	2007	2008	2009	2010	2011
School of Engineering & Computer Science							
UG Total	516	538	548	654	736	784	826
African American / Black	51	45	43	43	50	50	47
Alaskan Native / Amer. Indian	2	3	3	5	5	-	1
Asian	-	-	-	-	-	51	50
Asian / Pacific Islander	29	26	33	42	46	-	-
Hispanic	47	52	54	79	87	113	96
Pacific Islander	-	-	-	-	-	-	-
White	380	404	408	478	537	544	597
Multiracial	-	-	-	-	-	26	35
Other	7	8	7	7	6	-	-
Not Specified	-	-	-	-	5	-	-
GR Total	40	37	46	46	48	55	52
African American / Black	-	2	1	2	3	4	4
Alaskan Native / Amer. Indian	1	-	1	1	-	-	-
Asian	-	-	-	-	-	16	10
Asian / Pacific Islander	14	7	12	14	17	-	-
Hispanic	1	2	2	5	5	6	3
Pacific Islander	-	-	-	-	-	-	-
White	21	22	27	21	23	26	31
Multiracial	-	-	-	-	-	3	4
Other	3	4	3	3	-	-	-
Not Specified	-	-	-	-	-	-	-
School of Education							
UG Total	923	982	1,056	1,061	1,056	1,099	1,137
African American / Black	77	96	110	123	130	139	152
Alaskan Native / Amer. Indian	4	3	3	7	6	7	6
Asian	-	-	-	-	-	48	52
Asian / Pacific Islander	29	31	34	42	50	-	-
Hispanic	72	70	80	77	81	105	128
Pacific Islander	-	-	-	-	-	-	-
White	724	770	820	800	773	755	751
Multiracial	-	-	-	-	-	45	48
Other	15	12	9	12	14	-	-
Not Specified	2	-	-	-	2	-	-
GR Total	259	255	217	234	266	232	230
African American / Black	32	28	18	16	22	13	12
Alaskan Native / Amer. Indian	4	5	4	-	-	-	-
Asian	-	-	-	-	-	13	12
Asian / Pacific Islander	11	10	11	9	15	-	-
Hispanic	7	8	10	19	24	15	15
Pacific Islander	-	-	-	-	-	-	-
White	198	199	170	183	199	187	186
Multiracial	-	-	-	-	-	4	5
Other	7	5	4	7	6	-	-
Not Specified	-	-	-	-	-	-	-

**Program Enrollment by Unit, Level, and Race
Fall 2005 - Fall 2011**

	2005	2006	2007	2008	2009	2010	2011
Graduate School							
GR Total	10	10	9	13	9	13	8
African American / Black	1	1	-	-	-	-	1
Alaskan Native / Amer. Indian	-	-	-	1	-	-	-
Asian	-	-	-	-	-	2	2
Asian / Pacific Islander	1	-	3	4	2	-	-
Hispanic	1	-	-	2	1	1	1
Pacific Islander	-	-	-	-	-	-	-
White	7	8	6	6	6	10	4
Multiracial	-	-	-	-	-	-	-
Other	-	1	-	-	-	-	-
Not Specified	-	-	-	-	-	-	-
Honors College							
UG Total	179	182	206	202	202	201	209
African American / Black	5	4	6	2	2	3	2
Alaskan Native / Amer. Indian	1	-	1	2	3	1	1
Asian	-	-	-	-	-	14	14
Asian / Pacific Islander	27	24	29	20	18	-	-
Hispanic	8	5	6	8	6	11	11
Pacific Islander	-	-	-	-	-	-	1
White	135	143	157	165	166	165	173
Multiracial	-	-	-	-	-	7	7
Other	3	6	7	5	7	-	-
Not Specified	-	-	-	-	-	-	-
Institutes & Special Studies							
UG Total	53	43	43	46	49	54	53
African American / Black	2	1	2	1	4	6	4
Alaskan Native / Amer. Indian	-	-	1	-	1	-	-
Asian	-	-	-	-	-	2	1
Asian / Pacific Islander	4	8	5	3	3	-	-
Hispanic	6	5	4	2	2	5	5
Pacific Islander	-	-	-	-	-	-	-
White	39	28	30	36	36	36	40
Multiracial	-	-	-	-	-	5	3
Other	2	1	1	4	3	-	-
Not Specified	-	-	-	-	-	-	-
GR Total	23	24	30	32	33	36	37
African American / Black	-	-	1	-	1	1	1
Alaskan Native / Amer. Indian	-	-	-	-	-	-	-
Asian	-	-	-	-	-	12	16
Asian / Pacific Islander	14	15	15	14	11	-	-
Hispanic	-	-	1	1	2	3	5
Pacific Islander	-	-	-	-	-	-	-
White	9	9	13	17	18	18	13
Multiracial	-	-	-	-	-	2	2
Other	-	-	-	-	1	-	-
Not Specified	-	-	-	-	-	-	-

**Program Enrollment by Unit, Level, and Race
Fall 2005 - Fall 2011**

	2005	2006	2007	2008	2009	2010	2011
School of Law							
LW Total	432	400	413	423	465	462	443
African American / Black	5	5	4	5	12	11	9
Alaskan Native / Amer. Indian	5	1	-	1	1	2	1
Asian	-	-	-	-	-	34	21
Asian / Pacific Islander	21	25	22	31	42	-	-
Hispanic	17	16	17	16	35	39	37
Pacific Islander	-	-	-	-	-	2	-
White	375	344	363	363	367	360	362
Multiracial	-	-	-	-	-	14	13
Other	9	9	7	7	7	-	-
Not Specified	-	-	-	-	1	-	-
School of Music							
UG Total	287	304	313	319	320	330	300
African American / Black	10	10	10	14	13	13	10
Alaskan Native / Amer. Indian	1	1	1	2	4	1	1
Asian	-	-	-	-	-	14	11
Asian / Pacific Islander	6	10	17	20	17	-	-
Hispanic	35	35	36	39	42	45	43
Pacific Islander	-	-	-	-	-	-	-
White	229	242	243	238	232	245	221
Multiracial	-	-	-	-	-	12	14
Other	6	6	6	6	12	-	-
Not Specified	-	-	-	-	-	-	-
GR Total	67	64	61	61	61	60	63
African American / Black	3	2	-	-	-	-	2
Alaskan Native / Amer. Indian	1	1	1	1	1	-	-
Asian	-	-	-	-	-	4	7
Asian / Pacific Islander	6	5	4	2	3	-	-
Hispanic	5	8	6	3	5	7	7
Pacific Islander	-	-	-	-	-	-	-
White	51	46	48	52	49	46	46
Multiracial	-	-	-	-	-	3	1
Other	1	2	2	3	3	-	-
Not Specified	-	-	-	-	-	-	-

**Program Enrollment by Unit, Level, and Race
Fall 2005 - Fall 2011**

	2005	2006	2007	2008	2009	2010	2011
School of Nursing							
UG Total	497	514	507	501	539	582	643
African American / Black	39	34	41	37	52	57	61
Alaskan Native / Amer. Indian	6	4	3	4	5	2	2
Asian	-	-	-	-	-	38	47
Asian / Pacific Islander	42	38	47	44	43	-	-
Hispanic	46	56	58	59	79	87	99
Pacific Islander	-	-	-	-	-	-	-
White	352	371	349	350	349	370	408
Multiracial	-	-	-	-	-	28	26
Other	12	10	8	7	11	-	-
Not Specified	-	1	1	-	-	-	-
GR Total	35	37	39	52	58	73	78
African American / Black	2	1	2	2	4	3	4
Alaskan Native / Amer. Indian	-	-	1	1	1	1	-
Asian	-	-	-	-	-	6	5
Asian / Pacific Islander	4	2	3	5	4	-	-
Hispanic	2	4	5	4	4	6	3
Pacific Islander	-	-	-	-	-	-	-
White	27	30	27	39	45	54	60
Multiracial	-	-	-	-	-	3	6
Other	-	-	-	1	-	-	-
Not Specified	-	-	1	-	-	-	-
School of Social Work							
UG Total	78	118	136	122	129	158	159
African American / Black	12	13	15	17	15	14	12
Alaskan Native / Amer. Indian	1	1	-	1	1	1	1
Asian	-	-	-	-	-	6	7
Asian / Pacific Islander	-	2	6	5	3	-	-
Hispanic	8	8	9	9	11	15	20
Pacific Islander	-	-	-	-	-	-	-
White	56	92	106	89	97	117	111
Multiracial	-	-	-	-	-	5	8
Other	1	2	-	1	1	-	-
Not Specified	-	-	-	-	1	-	-
SW Total	71	85	110	117	122	110	115
African American / Black	5	7	12	11	11	12	20
Alaskan Native / Amer. Indian	-	-	1	1	3	1	1
Asian	-	-	-	-	-	8	11
Asian / Pacific Islander	-	1	4	5	7	-	-
Hispanic	3	7	10	14	12	16	11
Pacific Islander	-	-	-	-	-	-	-
White	60	68	82	83	83	69	69
Multiracial	-	-	-	-	-	4	3
Other	3	2	1	3	6	-	-
Not Specified	-	-	-	-	-	-	-

**Program Enrollment by Unit, Level, and Race
Fall 2005 - Fall 2011**

	2005	2006	2007	2008	2009	2010	2011
Truett Seminary							
PR Total	387	379	403	407	399	369	356
African American / Black	29	35	42	52	51	49	43
Alaskan Native / Amer. Indian	2	1	2	2	3	1	-
Asian	-	-	-	-	-	10	9
Asian / Pacific Islander	5	8	11	7	11	-	-
Hispanic	25	31	30	32	27	26	28
Pacific Islander	-	-	-	-	-	1	1
White	323	301	315	311	298	270	259
Multiracial	-	-	-	-	-	12	16
Other	3	2	3	3	9	-	-
Not Specified	-	1	-	-	-	-	-
Graduate Military Programs							
GR Total	119	154	166	181	166	175	128
African American / Black	3	7	9	8	9	8	7
Alaskan Native / Amer. Indian	1	-	1	2	1	1	1
Asian	-	-	-	-	-	6	2
Asian / Pacific Islander	6	5	7	9	9	-	-
Hispanic	4	5	9	12	8	8	7
Pacific Islander	-	-	-	-	-	4	1
White	86	116	122	133	125	147	106
Multiracial	-	-	-	-	-	1	4
Other	5	4	2	1	-	-	-
Not Specified	14	17	16	16	14	-	-

**Program Enrollment by Unit, Level, and Gender
Fall 2005 - Fall 2011**

		2005	2006	2007	2008	2009	2010	2011
College of Arts & Sciences								
UG	Total	6,709	6,503	6,410	6,490	6,448	6,566	6,514
	Male	2,373	2,230	2,254	2,273	2,263	2,358	2,334
	Female	4,336	4,273	4,156	4,217	4,185	4,208	4,180
GR	Total	600	637	627	631	647	680	665
	Male	304	316	313	308	340	342	338
	Female	296	321	314	323	307	338	327
School of Business								
UG	Total	2,583	2,647	2,683	2,767	2,670	2,654	2,728
	Male	1,582	1,578	1,665	1,704	1,609	1,628	1,640
	Female	1,001	1,069	1,018	1,063	1,061	1,026	1,088
GR	Total	232	257	279	294	346	332	348
	Male	152	174	193	191	230	222	236
	Female	80	83	86	103	116	110	112
School of Engineering & Computer Science								
UG	Total	516	538	548	654	736	786	827
	Male	435	455	463	536	598	622	638
	Female	81	83	85	118	138	164	189
GR	Total	40	37	46	46	48	55	52
	Male	34	28	37	38	41	47	46
	Female	6	9	9	8	7	8	6
School of Education								
UG	Total	923	982	1,056	1,061	1,056	1,103	1,138
	Male	225	239	249	255	253	294	331
	Female	698	743	807	806	803	809	807
GR	Total	259	255	217	234	266	232	231
	Male	102	87	78	84	90	84	78
	Female	157	168	139	150	176	148	153
Graduate School								
GR	Total	10	10	9	13	9	13	8
	Male	6	3	3	6	0	3	3
	Female	4	7	6	7	9	10	5
Honors College								
UG	Total	179	182	206	202	202	202	209
	Male	84	84	94	93	92	91	87
	Female	95	98	112	109	110	111	122

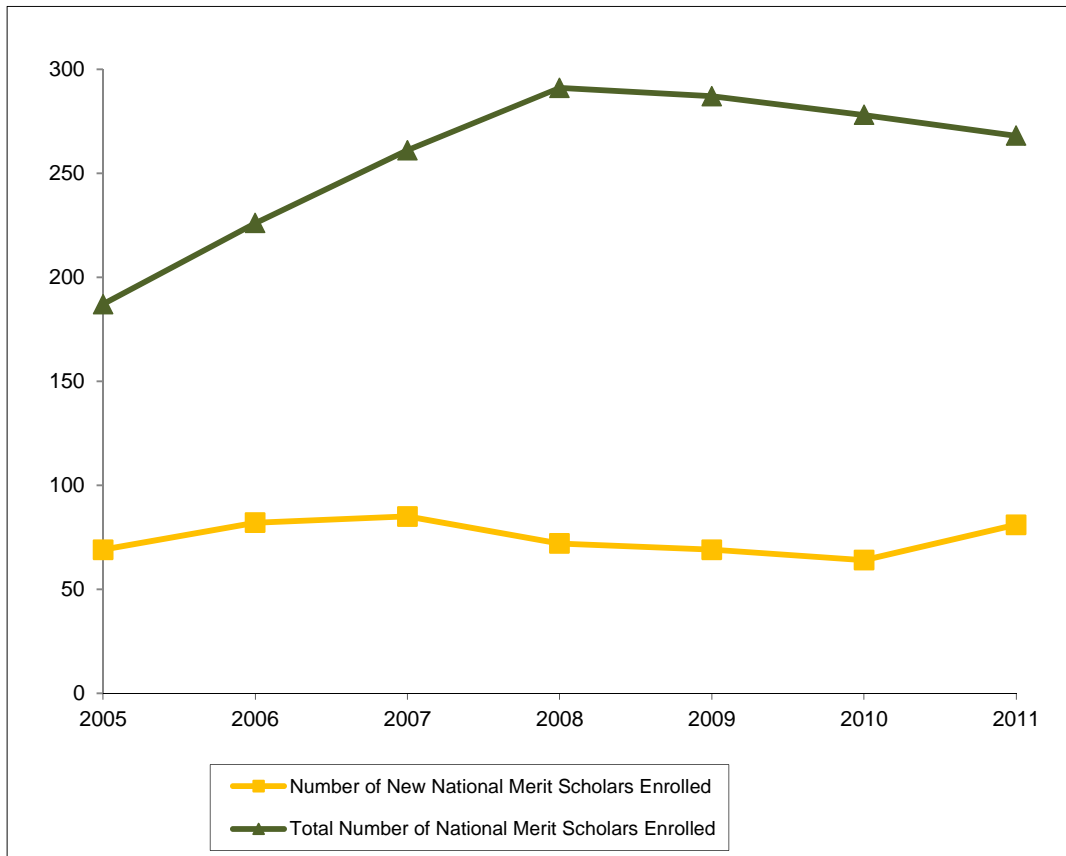
**Program Enrollment by Unit, Level, and Gender
Fall 2005 - Fall 2011**

		2005	2006	2007	2008	2009	2010	2011
Institutes & Special Studies								
UG	Total	53	43	43	46	49	54	54
	Male	38	29	26	28	31	31	44
	Female	15	14	17	18	18	23	10
GR	Total	23	24	30	32	33	36	37
	Male	15	15	17	15	15	16	19
	Female	8	9	13	17	18	20	18
School of Law								
LW	Total	432	400	413	423	465	466	445
	Male	236	227	250	239	246	234	214
	Female	196	173	163	184	219	232	231
School of Music								
UG	Total	287	304	313	319	320	332	303
	Male	139	147	148	153	145	167	155
	Female	148	157	165	166	175	165	148
GR	Total	67	64	61	61	61	60	63
	Male	33	35	37	37	34	25	26
	Female	34	29	24	24	27	35	37
School of Nursing								
UG	Total	497	514	507	501	539	583	643
	Male	28	31	35	30	36	48	53
	Female	469	483	472	471	503	535	590
GR	Total	35	37	39	52	58	73	78
	Male	3	1	0	1	2	4	7
	Female	32	36	39	51	56	69	71
School of Social Work								
UG	Total	78	118	136	122	129	158	159
	Male	5	7	9	13	14	11	11
	Female	73	111	127	109	115	147	148
SW	Total	71	85	110	117	122	110	115
	Male	8	12	15	17	22	15	16
	Female	63	73	95	100	100	95	99
Truett Seminary								
PR	Total	387	379	403	407	399	369	356
	Male	262	267	284	282	259	234	228
	Female	125	112	119	125	140	135	128

**Program Enrollment by Unit, Level, and Gender
Fall 2005 - Fall 2011**

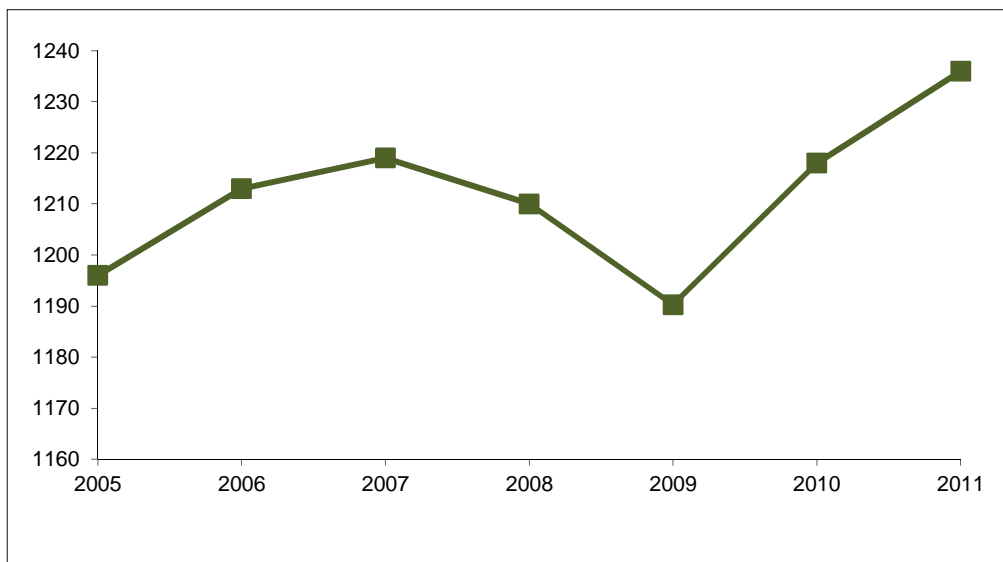
		2005	2006	2007	2008	2009	2010	2011
Graduate Military Programs								
GR	Total	119	154	166	181	166	201	213
	Male	87	103	104	117	100	114	122
	Female	32	51	62	64	66	87	91

**National Merit Scholars
Fall 2005 - Fall 2011**



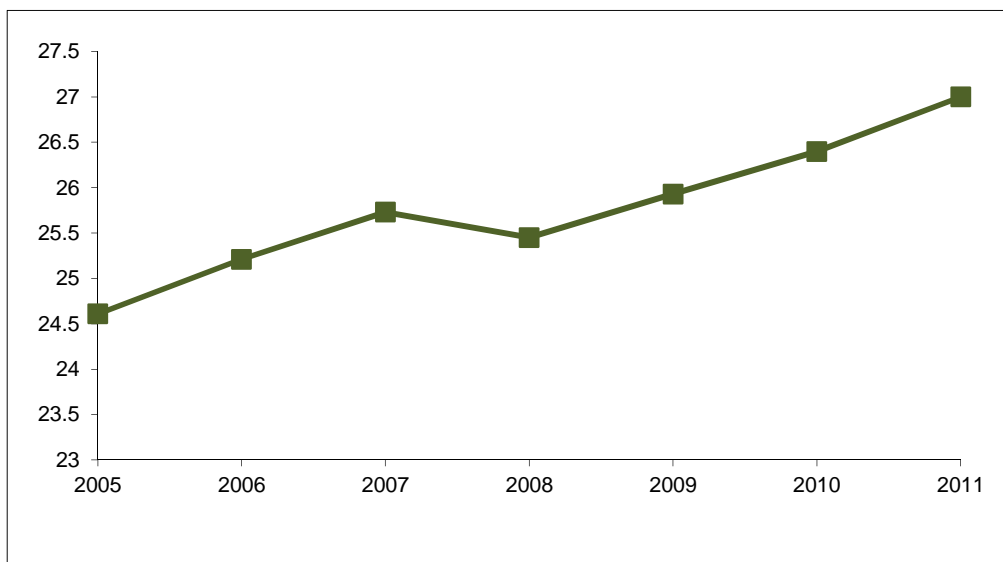
	Fall	2005	2006	2007	2008	2009	2010	2011
Number of New National Merit Scholars Enrolled		69	82	85	72	69	64	81
Total Number of National Merit Scholars Enrolled		187	226	261	291	287	278	268

**Average SAT Scores for First-Time Freshmen
Fall 2005 - Fall 2011**



	Fall	2005	2006	2007	2008	2009	2010	2011
Average SAT		1196	1213	1219	1210	1190	1218	1236
Number of Students		2,284	1,860	1,801	2,015	1,808	1,787	1,529

**Average ACT Scores for First-Time Freshmen
Fall 2005 - Fall 2011**



	Fall	2005	2006	2007	2008	2009	2010	2011
Average ACT		24.6	25.2	25.7	25.5	25.9	26.4	27.0
Number of Students		884	923	931	1,046	1,290	1,472	1,504

Notes:

1. In these tables, the highest SAT score is compared to the highest ACT score, and only the better score is retained.

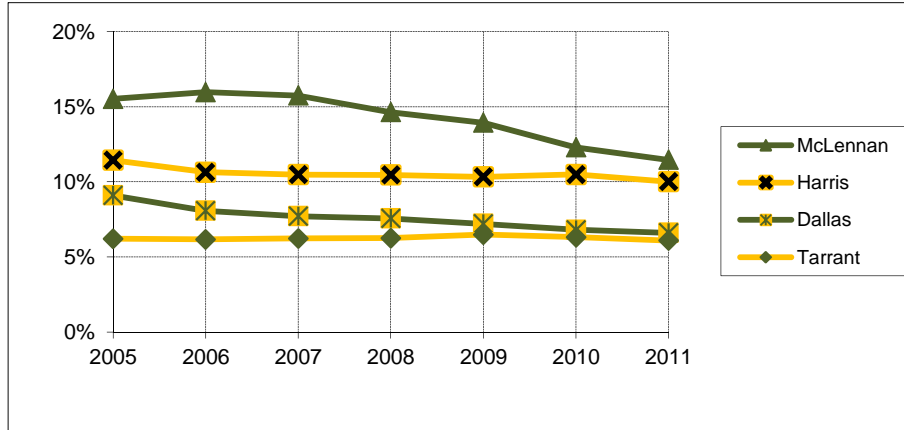
**Leading Texas Counties of Origin
Fall 2005 - Fall 2011**

Fall	2005	2006	2007	2008	2009	2010	2011
McLennan	2,169	2,242	2,232	2,128	2,036	1,832	1,722
Harris	1,599	1,494	1,486	1,521	1,510	1,564	1,505
Dallas	1,271	1,134	1,093	1,100	1,052	1,014	993
Tarrant	868	867	884	910	948	941	916
Collin	481	582	601	631	626	617	613
Bexar	486	507	507	521	533	608	612
Fort Bend	332	358	379	416	421	447	510
Travis	405	410	404	420	432	427	466
Denton	196	270	298	340	386	400	380
Montgomery	298	283	290	324	299	330	348
Williamson	201	220	221	268	285	320	321
Bell	215	210	194	200	216	201	204
Galveston	108	109	105	114	120	124	134
El Paso	100	109	120	116	112	121	119
Smith	151	150	122	109	97	100	107
Brazoria	97	100	105	101	109	112	101
Ellis	68	69	90	109	114	106	91
Nueces	89	71	74	92	80	87	90
Gregg	106	97	94	108	97	94	88
Hidalgo	96	88	99	96	102	83	88
Rockwall	84	69	76	79	80	83	87
Jefferson	88	81	70	69	74	84	75
Parker	31	36	40	48	60	67	73
Taylor	65	62	54	46	52	60	63
Johnson	68	64	69	70	79	73	60
Guadalupe	39	35	35	39	49	56	60

**Leading States of Origin
Fall 2005 - Fall 2011**

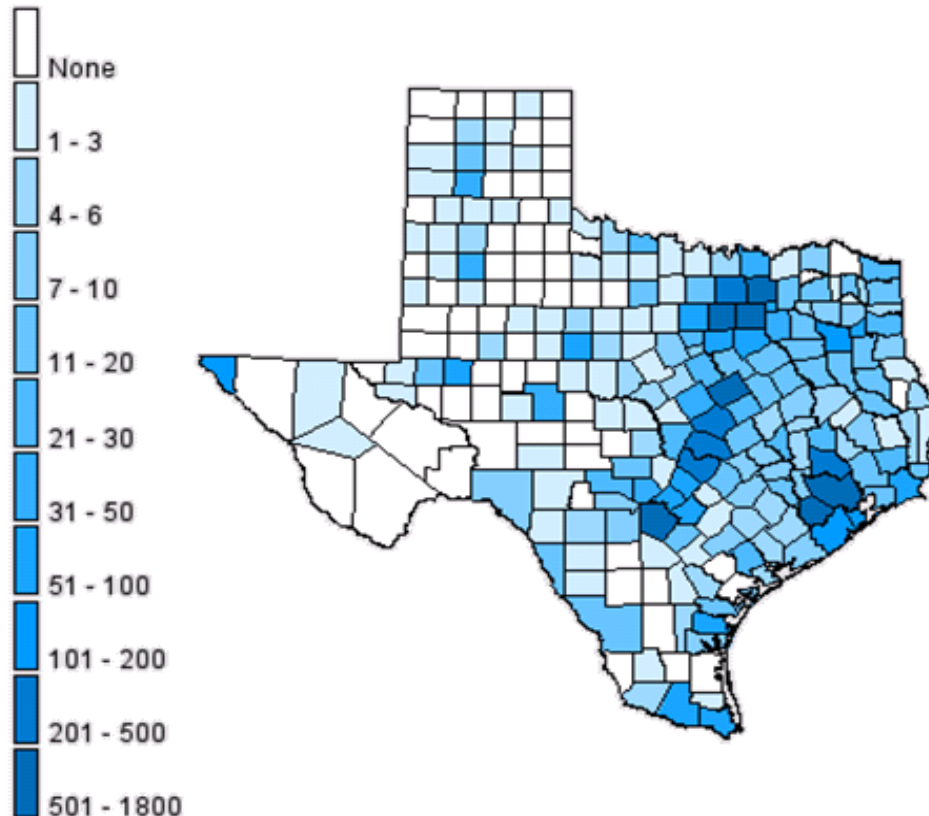
Fall	2005	2006	2007	2008	2009	2010	2011
Texas	11,349	11,316	11,355	11,616	11,647	11,652	11,511
California	252	269	268	278	296	332	382
Colorado	145	143	179	199	201	230	264
Oklahoma	177	170	175	195	193	199	196
Illinois	105	117	125	167	155	180	187
Louisiana	145	152	176	169	168	155	149
Missouri	100	97	105	119	127	139	146
Tennessee	66	80	88	89	103	109	119
Arkansas	105	99	104	110	109	106	118
Kansas	91	93	99	100	98	111	110
Georgia	63	73	61	73	78	81	93
Florida	88	97	86	86	80	78	88
Washington	36	31	35	49	45	73	82
Virginia	44	55	63	59	56	67	78
Arizona	81	79	78	75	72	63	76

Percentage From Top Four Texas Counties
Fall 2005 - Fall 2011



	Fall	2005	2006	2007	2008	2009	2010	2011
McLennan		15.5%	16.0%	15.7%	14.6%	13.9%	12.3%	11.5%
Harris		11.4%	10.6%	10.5%	10.5%	10.3%	10.5%	10.0%
Dallas		9.1%	8.1%	7.7%	7.6%	7.2%	6.8%	6.6%
Tarrant		6.2%	6.2%	6.2%	6.3%	6.5%	6.3%	6.1%

Students From Texas by County
Fall 2011



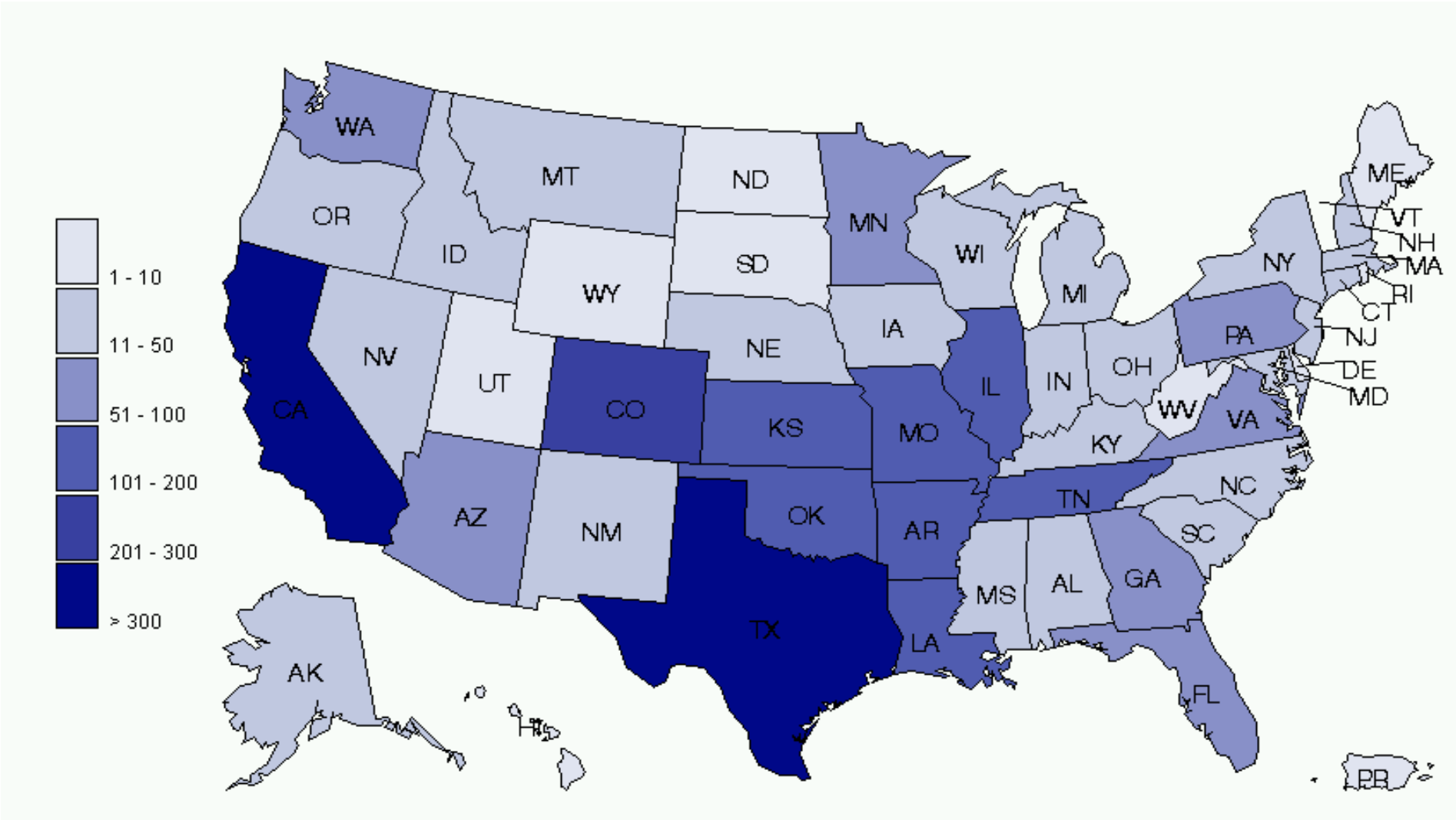
**Texas Enrollment by County
Fall 2011**

	n		n		n		n		n
Anderson	14	Crane	-	Hartley	-	Madison	5	San Patricio	11
Andrews	-	Crockett	-	Haskell	-	Marion	5	San Saba	1
Angelina	19	Crosby	-	Hays	55	Martin	-	Schleicher	-
Aransas	10	Culberson	3	Hemphill	-	Mason	-	Scurry	3
Archer	1	Dallam	-	Henderson	18	Matagorda	9	Shackelford	1
Armstrong	-	Dallas	993	Hidalgo	88	Maverick	11	Shelby	3
Atascosa	3	Dawson	-	Hill	20	McCulloch	1	Sherman	-
Austin	13	Deaf Smith	2	Hockley	1	McLennan	1,722	Smith	107
Bailey	1	Delta	-	Hood	27	McMullen	-	Somervell	7
Bandera	7	Denton	380	Hopkins	12	Medina	9	Starr	5
Bastrop	17	De Witt	7	Houston	4	Menard	-	Stephens	2
Baylor	1	Dickens	-	Howard	6	Midland	51	Sterling	-
Bee	5	Dimmitt	1	Hudspeth	-	Milam	15	Stonewall	-
Bell	204	Donley	-	Hunt	19	Mills	5	Sutton	2
Bexar	612	Duval	-	Hutchinson	1	Mitchell	-	Swisher	2
Blanco	1	Eastland	2	Irion	1	Montague	1	Tarrant	916
Borden	-	Ector	14	Jack	1	Montgomery	348	Taylor	63
Bosque	27	Edwards	1	Jackson	6	Moore	5	Terrell	-
Bowie	25	Ellis	91	Jasper	5	Morris	5	Terry	-
Brazoria	101	El Paso	119	Jeff Davis	1	Motley	-	Throckmorton	-
Brazos	29	Erath	10	Jefferson	75	Nacogdoches	18	Titus	12
Brewster	-	Falls	27	Jim Hogg	1	Navarro	20	Tom Green	36
Briscoe	1	Fannin	3	Jim Wells	6	Newton	2	Travis	466
Brooks	-	Fayette	8	Johnson	60	Nolan	2	Trinity	1
Brown	6	Fisher	2	Jones	5	Nueces	90	Tyler	1
Burleson	7	Floyd	-	Karnes	3	Ochiltree	1	Upshur	10
Burnet	25	Foard	-	Kaufman	41	Oldham	1	Upton	-
Caldwell	3	Fort Bend	510	Kendall	40	Orange	11	Uvalde	4
Calhoun	4	Franklin	3	Kenedy	-	Palo Pinto	3	Val Verde	8
Callahan	5	Freestone	13	Kent	-	Panola	7	Van Zandt	16
Cameron	51	Frio	-	Kerr	25	Parker	73	Victoria	29
Camp	2	Gaines	-	Kimble	-	Parmer	-	Walker	21
Carson	3	Galveston	134	King	-	Pecos	-	Waller	8
Cass	11	Garza	-	Kinney	1	Polk	7	Ward	3
Castro	1	Gillespie	18	Kleberg	9	Potter	14	Washington	10
Chambers	14	Glasscock	-	Knox	2	Presidio	-	Webb	18
Cherokee	16	Goliad	-	Lamar	9	Rains	4	Wharton	5
Childress	2	Gonzales	1	Lamb	1	Randall	45	Wheeler	-
Clay	1	Gray	2	Lampasas	3	Reagan	-	Wichita	30
Cochran	-	Grayson	36	La Salle	-	Real	-	Wilbarger	6
Coke	-	Gregg	88	Lavaca	5	Red River	-	Willacy	1
Coleman	1	Grimes	6	Lee	9	Reeves	-	Williamson	321
Collin	613	Guadalupe	60	Leon	7	Refugio	-	Wilson	11
Collingsworth	-	Hale	4	Liberty	20	Roberts	-	Winkler	2
Colorado	6	Hall	-	Limestone	14	Robertson	4	Wise	17
Comal	59	Hamilton	4	Lipscomb	-	Rockwall	87	Wood	9
Comanche	1	Hansford	-	Live Oak	2	Runnels	2	Yoakum	1
Concho	-	Hardeman	1	Llano	5	Rusk	19	Young	14
Cooke	5	Hardin	21	Loving	-	Sabine	4	Zapata	-
Coryell	36	Harris	1,505	Lubbock	49	San Augustine	-	Zavala	1
Cottle	-	Harrison	25	Lynn	1	San Jacinto	6	Total	11,511

Enrollment by State
Fall 2005 - Fall 2011

Fall	2005	2006	2007	2008	2009	2010	2011
Alabama	33	32	29	33	38	39	36
Alaska	20	15	13	9	10	12	12
Arizona	81	79	78	75	72	63	76
Arkansas	105	99	104	110	109	106	118
California	252	269	268	278	296	332	382
Colorado	145	143	179	199	201	230	264
Connecticut	7	8	9	10	11	12	19
Delaware	1	1	3	4	4	5	5
District of Columbia	2	2	1	1	3	2	3
Florida	88	97	86	86	80	78	88
Georgia	63	73	61	73	78	81	93
Hawaii	13	10	14	12	13	14	10
Idaho	9	5	13	10	12	9	18
Illinois	105	117	125	167	155	180	187
Indiana	28	29	28	26	32	34	34
Iowa	19	20	16	20	27	31	31
Kansas	91	33	99	100	98	111	110
Kentucky	13	13	7	13	17	20	14
Louisiana	145	152	176	169	168	155	149
Maine	6	2	3	3	2	0	2
Maryland	28	32	29	19	18	27	29
Massachusetts	19	22	19	25	23	23	29
Michigan	22	31	25	40	37	36	46
Minnesota	35	37	36	49	47	59	69
Mississippi	38	34	28	27	19	18	27
Missouri	100	97	105	119	127	139	146
Montana	1	3	8	6	7	9	11
Nebraska	29	28	31	29	32	34	28
Nevada	12	19	13	13	14	16	21
New Hampshire	5	7	9	12	7	13	14
New Jersey	21	19	23	21	24	28	40
New Mexico	66	69	65	53	46	45	47
New York	24	25	26	26	26	33	41
North Carolina	40	41	57	42	42	43	47
North Dakota	1	1	1	2	5	2	2
Ohio	29	39	45	49	40	50	50
Oklahoma	177	170	175	195	193	199	196
Oregon	21	20	20	25	28	32	31
Pennsylvania	26	32	31	30	38	30	51
Rhode Island	2	4	3	2	0	1	4
South Carolina	16	19	14	16	27	21	20
South Dakota	8	8	11	5	5	4	5
Tennessee	66	80	88	89	103	109	119
Texas	11,349	11,316	11,355	11,616	11,647	11,652	11,511
Utah	5	9	10	7	6	7	8
Vermont	2	3	3	2	1	0	0
Virginia	44	55	63	59	56	67	78
Washington	36	31	35	49	45	73	82
West Virginia	1	0	3	3	2	5	4
Wisconsin	17	19	13	18	23	27	31
Wyoming	6	10	12	11	6	5	5
Total	13,472	13,479	13,668	14,057	14,120	14,321	14,443

Enrollment by State
Fall 2011



Sources: Admissions Office and IRT

Countries Represented by Nonresident Aliens, Fall 2005 to Fall 2011

	Fall	2005	2006	2007	2008	2009	2010	2011		Fall	2005	2006	2007	2008	2009	2010	2011
Albania		0	0	0	0	1	1	0	Latvia		1	1	0	0	0	0	0
Angola		2	2	1	0	0	1	1	Lebanon		1	0	1	1	0	0	1
Argentina		2	1	0	1	2	3	2	Liberia		0	0	2	1	0	0	0
Armenia		1	1	1	1	1	1	1	Lithuania		0	0	0	0	0	1	1
Australia		1	4	5	1	3	5	4	Malaysia		1	3	3	3	3	2	2
Azerbaijan		1	0	0	0	0	0	0	Mali		1	1	0	0	0	1	1
Bahamas		3	3	2	2	2	1	1	Mexico		7	8	10	15	11	18	26
Bangladesh		1	2	1	0	1	1	1	Moldova		1	0	1	0	0	0	0
Barbados		0	0	1	1	0	0	0	Mongolia		1	1	0	0	0	0	0
Belgium		0	0	0	2	2	3	3	Montserrat		1	1	1	1	0	0	0
Belize		1	0	0	0	1	2	2	Myanmar		0	0	0	0	0	1	1
Bolivia		3	1	1	1	0	0	0	Namibia		0	0	0	1	0	0	0
Bosnia-Herzegovina		0	0	0	0	1	1	2	Nepal		7	5	5	5	9	7	10
Brazil		2	5	7	6	9	12	8	Netherlands		0	0	0	1	1	2	1
Bulgaria		2	3	2	1	1	1	2	New Zealand		3	2	2	0	0	0	0
Cambodia		0	0	0	0	2	2	2	Nicaragua		2	0	0	0	0	0	0
Cameroon		2	2	4	3	3	3	2	Nigeria		30	29	34	34	34	36	29
Canada		13	18	21	21	18	21	20	Norway		0	0	1	2	3	2	3
Chile		0	0	0	1	2	1	1	Pakistan		3	5	5	1	2	1	0
China*		67	68	90	99	110	152	183	Panama		1	1	0	0	0	0	0
Colombia		7	9	9	7	7	6	5	Peru		2	1	0	1	1	2	3
Congo		1	1	0	0	1	0	0	Philippines		1	0	0	1	1	1	1
Costa Rica		7	1	0	0	0	1	2	Poland		2	1	2	2	2	2	1
Cote D'Ivoire		0	1	2	2	1	1	0	Portugal		1	0	0	0	1	0	0
Croatia		0	0	0	1	2	2	1	Romania		2	3	3	1	2	5	4
Cuba		0	0	0	0	0	0	1	Russia		5	4	6	5	4	3	4
Czech Republic		4	5	6	5	1	2	5	Rwanda		1	0	0	0	0	0	0
Denmark		0	0	1	0	0	0	2	Senegal		1	2	2	1	1	0	0
Ecuador		3	3	2	2	1	1	0	Serbia & Montenegro		1	1	3	2	2	2	1
El Salvador		2	3	3	4	4	1	1	Singapore		1	0	0	1	1	4	4
Estonia		0	0	0	1	1	1	0	Slovakia		2	4	4	2	3	1	0
Ethiopia		1	1	1	1	1	1	1	Slovenia		1	0	1	1	0	1	1
Finland		1	1	0	0	0	0	1	Somalia		0	0	0	0	1	1	1
France		4	3	3	4	5	3	2	South Africa		1	2	1	1	1	0	0
Gabon		0	0	0	1	1	1	1	Spain		1	0	1	1	1	2	2
Georgia		0	0	0	0	1	1	1	Sri Lanka		7	5	4	2	1	2	1
Germany		7	7	6	6	11	7	9	St Vincent & Grenadines		1	0	0	0	0	0	0
Ghana		2	4	6	8	6	8	3	Sweden		4	4	3	0	1	2	1
Greece		1	0	0	0	0	0	1	Taiwan		12	15	14	8	8	8	6
Grenada		0	0	0	1	1	1	1	Thailand		3	4	3	2	0	0	0
Guatemala		2	1	2	3	3	3	4	Trinidad/Tobago		3	4	2	4	5	5	3
Haiti		0	0	0	1	0	0	0	Turkey		1	0	2	3	1	0	0
Honduras		2	2	3	3	2	4	6	Uganda		2	1	1	1	1	0	1
Hungary		1	1	1	2	1	2	1	Ukraine		3	2	1	0	1	1	1
India		34	28	25	17	24	25	23	United Kingdom		13	16	14	13	10	7	10
Indonesia		5	5	5	4	3	1	2	Uzbekistan		0	1	1	1	0	0	0
Iran		1	1	1	1	0	1	5	Venezuela		11	11	12	11	10	10	9
Italy		1	0	2	1	1	4	4	Vietnam		4	5	3	5	8	7	7
Jamaica		0	0	1	1	1	1	2	Virgin Islands (British)		1	2	1	1	0	0	0
Japan		13	13	13	12	8	7	7	Zaire		0	0	1	1	0	0	0
Jordan		0	1	0	0	0	0	0	Zambia		0	0	0	0	1	1	0
Kenya		5	4	5	4	3	3	2	Zimbabwe		2	3	3	1	0	0	0
Korea, Rep. of		34	36	44	48	51	63	56	Unknown		0	0	4	0	1	0	0
									Total		388	389	434	417	432	500	520

*Hong Kong counted in China.

**Headcount Enrollment by Unit
Fall 2005 - Fall 2011**

	Fall	2005	2006	2007	2008	2009	2010	2011
College of Arts & Sciences		7,301	7,129	7,034	7,111	7,089	7,237	7,179
School of Business		2,760	2,835	2,880	3,009	2,928	2,887	2,970
School of Education		1,169	1,229	1,272	1,294	1,322	1,335	1,369
School of Engineering & Computer Sci.		551	574	593	696	776	832	870
School of Music		340	358	366	369	371	383	356
School of Nursing		532	551	546	553	597	656	721
School of Social Work		121	175	214	206	208	229	242
Honors College		179	182	206	202	202	202	209
Institutes & Special Studies		76	67	73	78	82	90	91
Graduate School		10	9	9	13	9	13	8
School of Law		432	400	413	423	465	466	445
Truett Seminary		385	377	402	406	399	369	356
Graduate Military Programs		119	154	166	181	166	201	213
TOTAL		13,975	14,040	14,174	14,541	14,614	14,900	15,029

Notes:

1. Headcount counts a student once in their primary program.
2. The enrollment for the Graduate School reflects students classified as "No Major."

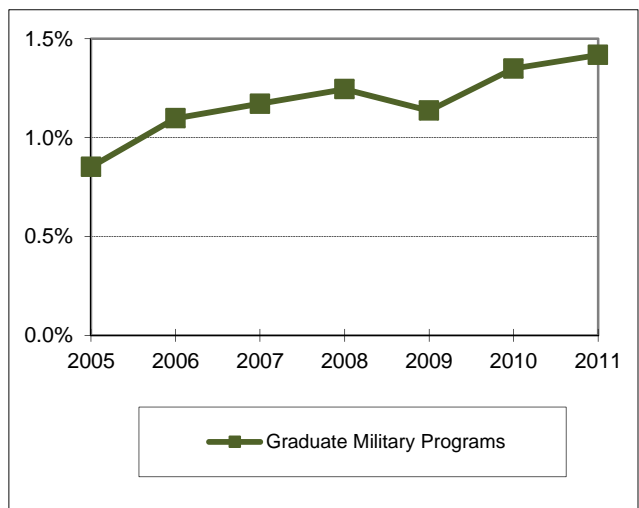
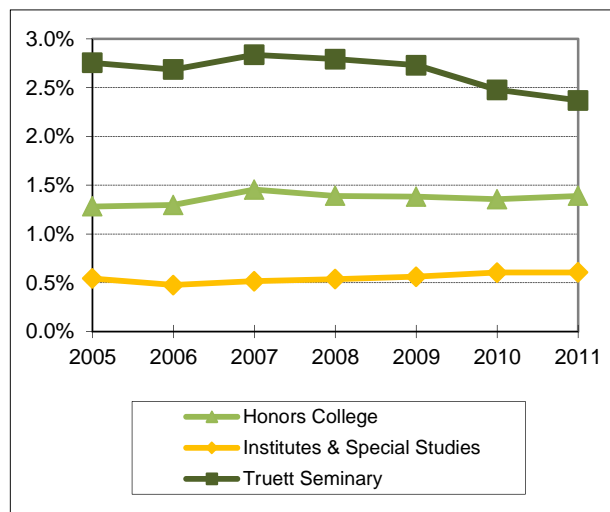
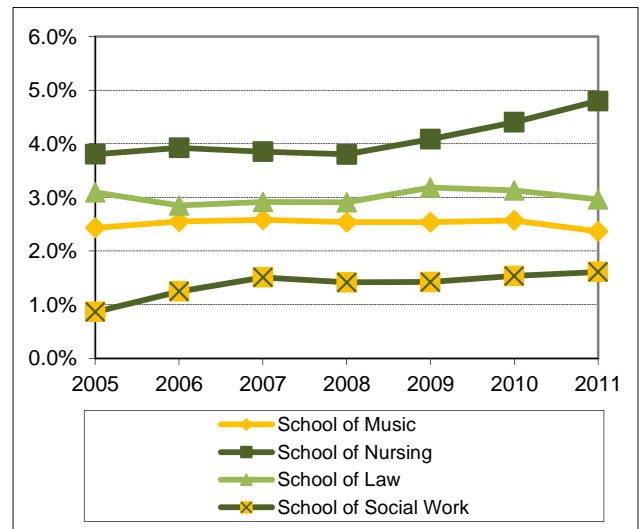
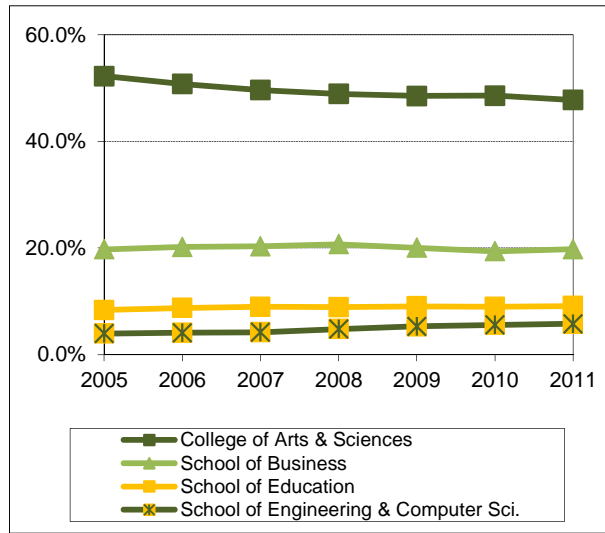
**Program Enrollment by Unit
Fall 2005 - Fall 2011**

	Fall	2005	2006	2007	2008	2009	2010	2011
College of Arts & Sciences		7,309	7,140	7,037	7,121	7,095	7,246	7,179
School of Business		2,815	2,904	2,962	3,090	3,016	2,986	3,076
School of Education		1,182	1,237	1,273	1,295	1,322	1,335	1,369
School of Engineering & Computer Sci.		556	575	594	700	784	841	879
School of Music		354	368	374	380	381	392	366
School of Nursing		532	551	546	553	597	656	721
School of Social Work		149	203	246	239	251	268	274
Honors College		179	182	206	202	202	202	209
Institutes & Special Studies		76	67	73	78	82	90	91
Graduate School		10	10	9	13	9	13	8
School of Law		432	400	413	423	465	466	445
Truett Seminary		387	379	403	407	399	369	356
Graduate Military Programs		119	154	166	181	166	201	213
TOTAL		14,100	14,170	14,302	14,682	14,769	15,065	15,186

Notes:

1. Program Count counts a student in each program.
2. The enrollment for the Graduate School reflects students classified as "No Major."

**Headcount Enrollment Percentage by Unit
Fall 2005 - Fall 2011**



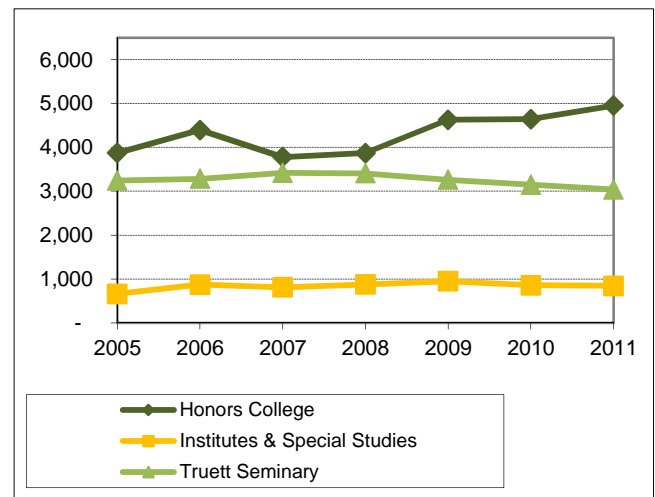
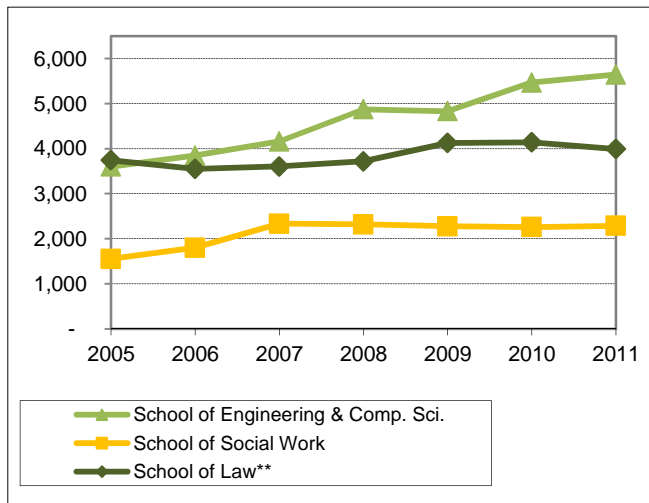
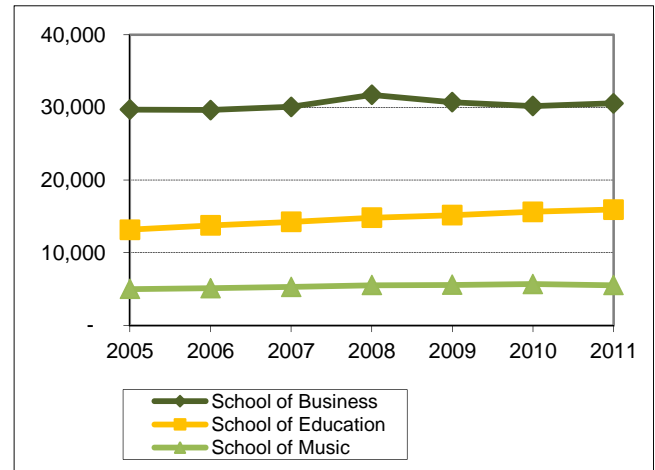
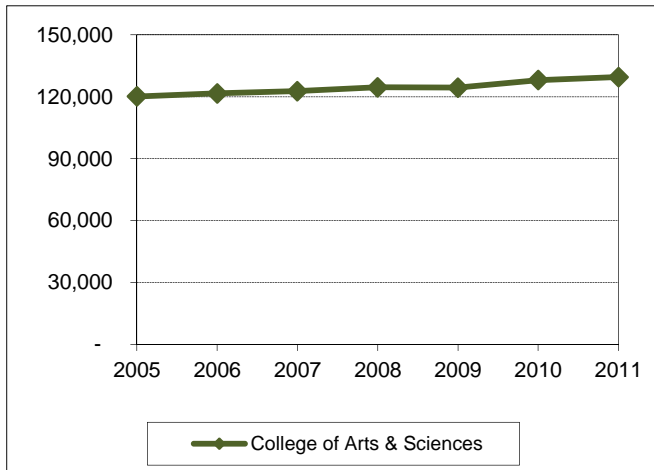
	Fall	2005	2006	2007	2008	2009	2010	2011
College of Arts & Sciences		52.2%	50.8%	49.6%	48.9%	48.5%	48.6%	47.8%
School of Business		19.7%	20.2%	20.3%	20.7%	20.0%	19.4%	19.8%
School of Education		8.4%	8.8%	9.0%	8.9%	9.0%	9.0%	9.1%
School of Engineering & Computer Sci.		3.9%	4.1%	4.2%	4.8%	5.3%	5.6%	5.8%
School of Music		2.4%	2.5%	2.6%	2.5%	2.5%	2.6%	2.4%
School of Nursing		3.8%	3.9%	3.9%	3.8%	4.1%	4.4%	4.8%
School of Social Work		0.9%	1.2%	1.5%	1.4%	1.4%	1.5%	1.6%
Honors College		1.3%	1.3%	1.5%	1.4%	1.4%	1.4%	1.4%
Institutes & Special Studies		0.5%	0.5%	0.5%	0.5%	0.6%	0.6%	0.6%
Graduate School		0.1%	0.1%	0.1%	0.1%	0.1%	0.1%	0.1%
School of Law		3.1%	2.8%	2.9%	2.9%	3.2%	3.1%	3.0%
Truett Seminary		2.8%	2.7%	2.8%	2.8%	2.7%	2.5%	2.4%
Graduate Military Programs		0.9%	1.1%	1.2%	1.2%	1.1%	1.3%	1.4%

Notes:

1. Headcount counts a student once in their primary program.

**Student Credit Hours by Unit*
(Excluding Military Programs)
Fall 2005 - Fall 2011**

Fall	2005	2006	2007	2008	2009	2010	2011
College of Arts & Sciences	120,123	121,641	122,705	124,545	124,416	128,054	129,497
School of Business	29,696	29,645	30,081	31,733	30,707	30,200	30,561
School of Education	13,175	13,770	14,257	14,833	15,179	15,635	15,943
School of Engineering & Comp. Sci.	3,601	3,847	4,159	4,874	4,831	5,467	5,645
School of Music	5,021	5,126	5,304	5,538	5,583	5,696	5,543
School of Nursing	4,235	4,209	4,215	4,443	4,638	5,257	5,567
School of Social Work	1,551	1,802	2,334	2,321	2,277	2,258	2,286
Honors College	3,872	4,394	3,780	3,870	4,630	4,642	4,953
Institutes & Special Studies	660	870	809	874	947	856	842
School of Law**	3,745	3,553	3,604	3,721	4,128	4,141	3,993
Truett Seminary	3,242	3,284	3,419	3,406	3,262	3,146	3,038
TOTAL	188,921	192,141	194,667	200,158	200,598	205,352	207,868

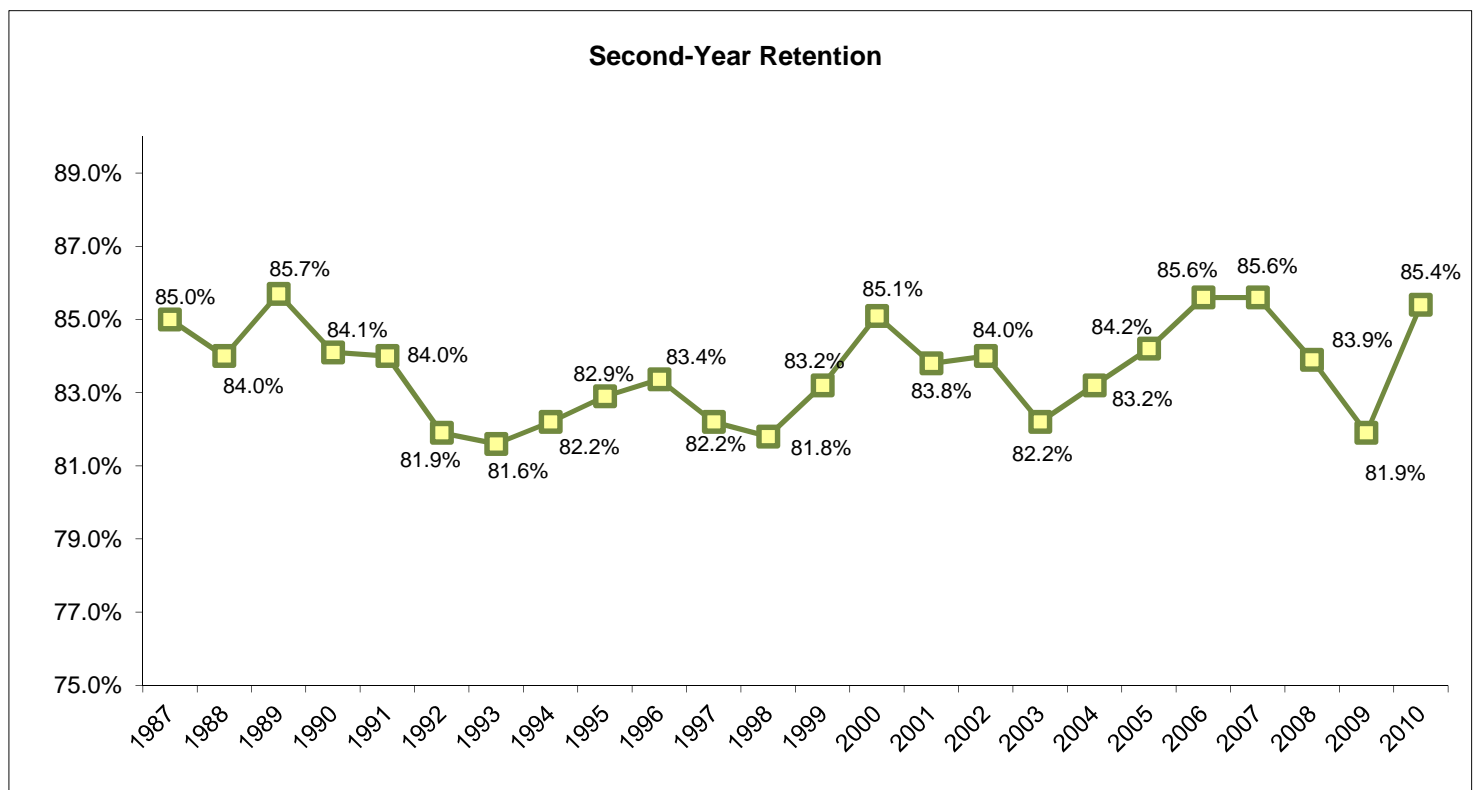


*BIC courses have been credited to the department of the instructor.

**Quarter hours converted to semester hours.

Retention of First-Time Freshman Classes Entering Fall 1987 - Fall 2010

First-Time Freshman Class of:	N	After 1 year		After 2 years		After 3 years			After 4 years			After 5 years			After 6 years		
		Cont.	Drop.	Cont.	Drop.	Cont.	Drop.	Grad.	Cont.	Drop.	Grad.	Cont.	Drop.	Grad.	Cont.	Drop.	Grad.
1987	2,313	85.0%	15.0%	75.6%	24.4%	71.7%	27.1%	1.2%	24.2%	28.2%	47.6%	3.4%	28.3%	68.3%	1.1%	28.2%	70.7%
1988	2,302	84.0%	16.0%	75.5%	24.5%	72.5%	26.5%	1.0%	29.8%	28.3%	41.9%	3.3%	28.5%	68.2%	0.8%	27.9%	71.3%
1989	2,357	85.7%	14.3%	74.8%	25.2%	71.2%	27.7%	1.1%	28.3%	28.9%	42.8%	3.9%	28.9%	67.2%	1.2%	28.8%	70.0%
1990	2,435	84.1%	15.9%	73.0%	27.0%	69.8%	29.0%	1.2%	28.1%	29.6%	42.3%	4.2%	30.0%	65.8%	1.6%	29.4%	69.0%
1991	2,156	84.0%	16.0%	74.5%	25.5%	70.7%	28.2%	1.1%	26.5%	29.6%	43.9%	3.8%	29.7%	66.5%	1.3%	29.0%	69.7%
1992	2,367	81.9%	18.1%	71.5%	28.5%	67.2%	31.5%	1.4%	28.4%	32.3%	39.3%	4.8%	32.0%	63.2%	0.9%	32.2%	66.9%
1993	2,433	81.6%	18.4%	72.0%	28.0%	68.4%	30.4%	1.2%	27.5%	32.3%	40.2%	4.5%	32.3%	63.2%	1.3%	31.8%	66.9%
1994	2,351	82.2%	17.8%	72.3%	27.7%	68.5%	30.1%	1.4%	27.0%	31.1%	41.9%	4.9%	31.9%	63.2%	1.5%	31.8%	66.7%
1995	2,339	82.9%	17.1%	76.0%	24.0%	71.4%	27.2%	1.4%	28.8%	28.3%	42.9%	4.4%	28.5%	67.1%	1.2%	28.0%	70.8%
1996	2,476	83.4%	16.6%	74.8%	25.2%	72.2%	26.9%	0.9%	29.4%	27.7%	42.9%	4.0%	27.6%	68.4%	1.3%	27.0%	71.7%
1997	2,410	82.2%	17.8%	73.7%	26.3%	70.3%	28.4%	1.2%	30.0%	29.9%	40.1%	4.9%	29.0%	66.1%	1.4%	28.5%	70.2%
1998	2,938	81.8%	18.2%	75.0%	25.0%	71.1%	27.1%	1.7%	28.9%	28.1%	43.0%	4.6%	29.4%	66.0%	1.4%	26.8%	71.9%
1999	2,772	83.2%	16.8%	75.5%	24.5%	70.7%	27.5%	1.8%	27.7%	27.0%	45.3%	3.9%	27.0%	69.1%	1.2%	26.8%	72.0%
2000	2,832	85.1%	14.9%	77.9%	22.1%	74.3%	25.0%	0.8%	26.4%	24.6%	49.0%	3.6%	24.9%	71.5%	1.1%	25.0%	73.9%
2001	2,801	83.8%	16.2%	75.7%	24.3%	73.3%	25.3%	1.4%	25.2%	26.8%	47.9%	3.5%	27.5%	69.0%	1.0%	27.4%	71.6%
2002	2,620	84.0%	16.0%	76.3%	23.7%	72.6%	25.5%	1.9%	22.7%	26.6%	50.7%	2.7%	26.7%	70.6%	0.8%	26.7%	72.6%
2003	2,678	82.2%	17.8%	74.5%	25.5%	70.6%	27.4%	1.9%	23.7%	28.9%	47.3%	3.6%	29.0%	67.4%	1.0%	28.9%	70.1%
2004	2,785	83.2%	16.8%	76.0%	24.0%	72.5%	26.0%	1.5%	22.4%	27.4%	50.2%	3.6%	28.0%	68.5%	1.5%	27.5%	71.0%
2005	3,168	84.2%	15.8%	77.1%	22.8%	71.9%	25.9%	2.1%	20.9%	27.3%	51.8%	3.1%	27.8%	69.1%	0.9%	27.6%	71.5%
2006	2,783	85.6%	14.4%	78.0%	21.8%	74.3%	23.9%	1.8%	19.9%	24.4%	55.7%	2.8%	24.6%	72.6%			
2007	2,732	85.6%	14.4%	77.7%	22.2%	74.4%	23.6%	1.9%	18.2%	24.8%	57.0%						
2008	3,062	83.9%	16.1%	76.6%	23.4%	72.6%	25.9%	1.5%									
2009	3,098	81.9%	18.1%	74.9%	25.0%												
2010	3,259	85.4%	14.6%														
Average		83.6%	16.4%	75.2%	24.8%	71.5%	27.1%	1.4%	25.9%	28.2%	45.9%	3.9%	28.6%	67.6%	1.2%	28.4%	70.4%
5-year Avg		84.5%	15.5%	76.9%	23.0%	73.1%	25.1%	1.8%	21.0%	26.6%	52.4%	3.2%	27.2%	69.6%	1.0%	27.6%	71.4%



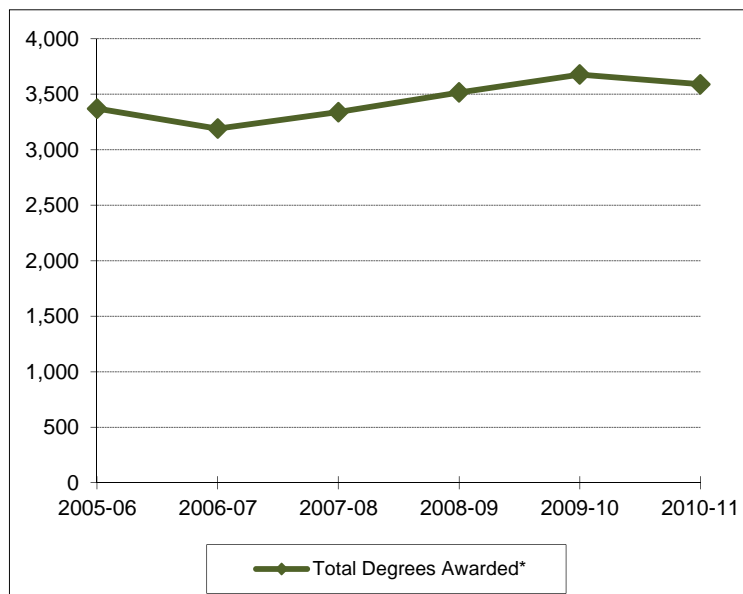
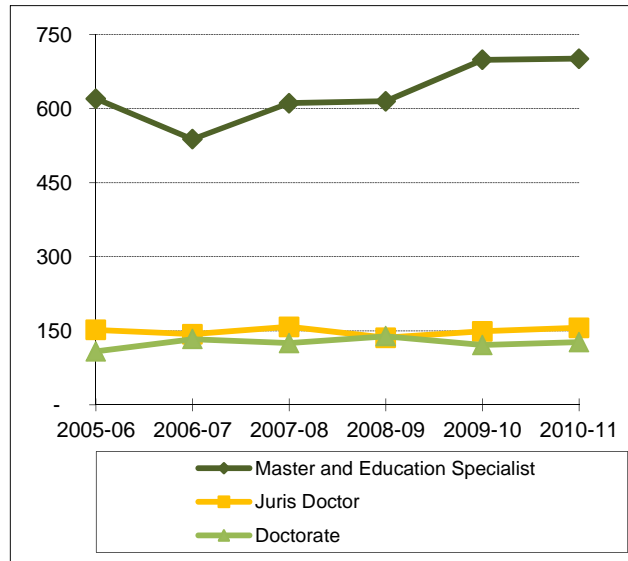
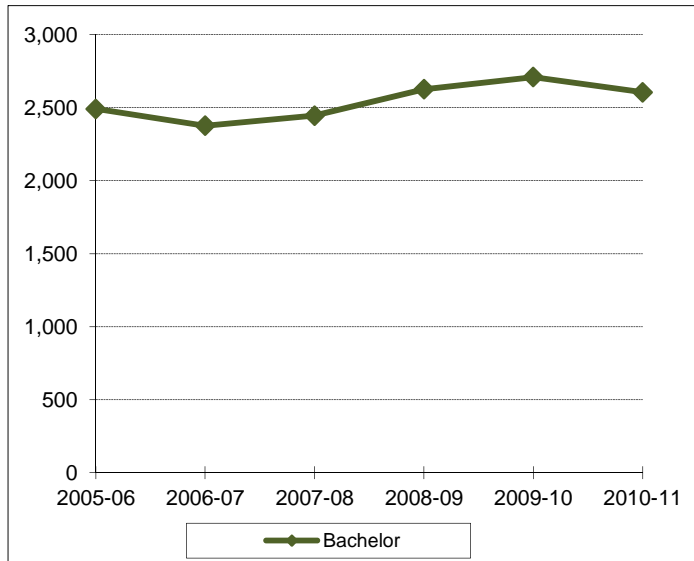
Distribution of Degrees (Duplicated Count*)
2005-06 through 2010-11

	2005-06	2006-07	2007-08	2008-09	2009-10	2010-11
Bachelor of Arts	1,075	931	1,042	1,105	1,068	992
Bachelor of Business Administration	821	761	760	757	860	820
Bachelor of Fine Arts	42	51	36	53	53	47
Bachelor of Music	36	33	34	34	34	39
Bachelor of Music Education	18	29	21	16	28	27
Bachelor of Science	270	289	306	371	332	335
Bachelor of Science in Aviation Sciences	13	8	6	4	10	5
Bachelor of Science in Computer Science	23	16	14	6	18	13
Bachelor of Science in Education	212	194	245	258	279	253
Bachelor of Science in Electrical & Computer Engineering	24	28	12	18	27	26
Bachelor of Science in Engineering	3	4	1	8	3	5
Bachelor of Science in Family & Consumer Sciences	77	100	87	83	99	104
Bachelor of Science in Informatics	11	9	6	9	7	4
Bachelor of Science in Mechanical Engineering	14	27	22	45	42	63
Bachelor of Science in Nursing	121	123	112	112	128	140
Bachelor of Social Work	13	19	36	38	40	37
TOTAL BACHELOR DEGREES	2,773	2,622	2,740	2,917	3,028	2,910
Int'l Masters of Environmental Science	-	-	2	2	-	-
Master of Accountancy	39	33	21	36	24	37
Master of Arts	67	71	62	64	67	68
Master of Business Administration	74	77	104	103	143	119
Master of Business Admin. in International Management	1	-	1	3	-	-
Master of Divinity	74	57	69	78	72	69
Master of Engineering	1	2	-	3	3	1
Master of Environmental Studies	3	1	1	3	2	-
Master of Fine Arts	2	3	3	3	1	2
Master of Health Administration	45	41	39	34	41	45
Master of International Journalism	1	2	2	2	3	7
Master of Music	26	28	24	21	34	20
Master of Public Health					4	9
Master of Public Policy and Administration	3	-	1	2	-	-
Master of Science	38	33	35	41	45	31
Master of Science in Biomedical Engineering	2	1	1	1	2	1
Master of Science in Clinical Psychology	7	4	5	6	7	6
Master of Science in Communication Sciences & Disorders	34	25	30	31	30	34
Master of Science in Economics	8	9	6	9	8	7
Master of Science in Education	97	74	93	60	93	97
Master of Science in Electrical/Computer Engineering	6	1	2	4	4	5
Master of Science in Information Systems	15	12	14	12	6	9
Master of Science in Mechanical Engineering	1	-	1	2	1	4
Master of Science in Nursing	20	15	14	14	16	20
Master of Social Work	39	30	63	57	58	60
Master of Taxation	13	11	10	12	20	25
Master of Theological Studies	2	4	4	8	13	15
TOTAL MASTER'S DEGREES	618	534	605	609	697	691
TOTAL EDUCATION SPECIALIST DEGREES	2	7	4	4	7	10
TOTAL JURIS DOCTOR DEGREES	163	143	158	136	136	156
Doctor of Education	26	10	6	4	6	9
Doctor of Ministry	5	8	5	5	7	5
Doctor of Philosophy	50	56	37	65	63	59
Doctor of Psychology	9	12	8	-	3	5
Doctor of Physical Therapy	14	43	62	53	16	28
Doctor of Science in Occupational Therapy						6
Doctor of Science in Physical Therapy	4	4	3	5	4	4
Doctor of Science in Physician Asst Studies			4	7	19	8
Doctor in Nursing Practice					3	3
TOTAL DOCTORAL DEGREES	108	133	121	132	99	116
TOTAL DEGREES AWARDED	3,664	3,439	3,628	3,798	3,967	3,883

* Degree information on this page is reported beginning with the Summer semester and including the following Fall and Spring terms.

An individual graduate with multiple majors is counted as a whole graduate in each major area of study (i.e., duplicated count).

**Summary of Degrees Awarded (Unduplicated Count*)
2005-06 through 2010-11**



Degree Level:	2005-06	2006-07	2007-08	2008-09	2009-10	2010-11
Bachelor	2,491	2,376	2,445	2,626	2,709	2,605
Master and Education Specialist	620	538	611	615	699	701
Juris Doctor	152	143	158	136	149	156
Doctorate	108	133	125	139	121	127
Total Degrees Awarded*	3,371	3,190	3,339	3,516	3,678	3,589

*The information on this page indicates the number of degree recipients (i.e., unduplicated count). Degree information is reported beginning with the Summer semester and including the following Fall and Spring terms.

**Degree Programs
(as of November 2011)**

Accounting (BBA)	Church-State Studies (MA)	Environmental Biology (MS)
Accounting (MAcc)	Church-State Studies (PhD)	Environmental Health Science (BS)
Advanced Nursing Leadership (MSN)	Classics (BA)	Environmental Science (BS)
Air Science and Environment (IMES)	Clinical Laboratory Science (BS)	Environmental Science (MS)
American Studies (BA)	Clinical Orthopaedics (DScPAS)	Environmental Studies (BA)
American Studies (MA)	Clinical Psychology (MSCP)	Environmental Studies (BS)
Anthropology (BA)	Clinical Psychology (PsyD)	Environmental Studies (MES)
Anthropology (BS)	Collaborative Piano (MM)	Exercise Physiology (BSEd)
Apparel Design and Product Development (BA)	Communication Sci. & Disorders (BA)	Family Nurse Practitioners (MSN)
Apparel Design and Product Development (BSFCS)	Communication Sci. & Disorders (MA)	Film and Digital Media (BA)
Apparel Merchandising (BA)	Communication Sci. & Disorders (MSCSD)	Finance (BBA)
Apparel Merchandising (BSFCS)	Communication Specialist (BA)	Financial Services / Planning (BBA)
Applied Mathematics (BS)	Communication Studies (MA)	Forestry (BA)
Applied Music (BM)	Community Health (BSEd)	Forestry (BS)
Art History (BA)	Community Health Education (MPH)	French (BA)
Asian Studies (BA)	Composition (BM)	General Family & Consumer Sci. (BA)
Astronomy (BA)	Composition (MM)	General Family & Consumer Sci. (BSFCS)
Astronomy (BS)	Computer Science (BA)	General Studies in HHPR (BSEd)
Astrophysics (BA)	Computer Science (BSCS)	Geography (BA)
Astrophysics (BS)	Computer Science Fellows (BSC)	Geology (BS)
Athletic Training (BSEd)	Computer Science (MS)	Geology (MS)
Aviation Sciences (BSAvSc)	Conducting (MM)	Geology (PhD)
Baylor Business Fellows (BBA)	Curriculum & Instruction (EdD)	Geophysics (BS)
Biblical & Related Languages (BA)	Curriculum & Instruction (MA)	German (BA)
Biochemistry (BA)	Curriculum & Instruction (MSEd)	Graduate - Nondegree
Biochemistry (BS)	Curriculum & Teaching (PhD)	Great Texts of the Western Tradition (BA)
Bioinformatics (BSI)	Directing (MFA)	Greek (BA)
Biology (BA)	Distribution Management/Technology (BBA)	Health Care Administration (MHA)
Biology (BS)	Earth Science (BA)	Health, Human Performance & Recreation (MSEd)
Biology (MA)	Earth Science (MA)	Health Science Studies (BSEd)
Biology (MS)	Ecological, Earth & Environmental Sciences (PhD)	Higher Education & Student Affairs (MSEd)
Biology (PhD)	Economics (BA)	History (BA)
Biomedical Engineering (MSBME)	Economics (BBA)	History (MA)
Biomedical Studies (MS)	Economics (BS)	History (PhD)
Biomedical Studies (PhD)	Economics (MSEco)	Human Resources Management (BBA)
Business Administration (EMBA)*	Education (MA)	Information Systems (BBA)
Business Administration (MBA)	Educational Administration (EdS)	Information Systems (MSIS)
Business for Secondary Education (BBA)	Educational Administration (MSEd)	Information Systems (PhD)
Business French (BBA)	Educational Psychology (MA)	Instrumental Music (BME)
Business German (BBA)	Educational Psychology (MSEd)	Interior Design (BA)
Business - Journalism (BBA)	Educational Psychology (PhD)	Interior Design (BSFCS)
Business Russian (BBA)	Electrical & Computer Engineering (BSECE)	International Business (BBA)
Business Spanish (BBA)	Electrical & Computer Engineering (MSECE)	International Economics (MA)
Chemistry (BA)	Electrical & Computer Engineering (PhD)	International Economics (MS)
Chemistry (BS)	Elementary Education (BSEd)	International Journalism (MIJ)
Chemistry (MS)	Emergency Medicine (DScPAS)	International Relations (MA)
Chemistry (PhD)	Engineering (BSE)	International Studies (BA)
Child & Family Studies (BA)	Engineering (ME)	Journalism (BA)
Child & Family Studies (BSFCS)	English (BA)	Journalism (MA)
Choral Music (BME)	English (MA)	Kinesiology, Exercise, Nutrition, Health Prev. (PhD)
Church Music (BM)	English (PhD)	Language and Linguistics (BA)
Church Music (MM)	Entrepreneurship (BBA)	Latin American Studies (BA)

**Degree Programs - Continued
(as of November 2011)**

Latin (BA)	Physics (MS)	Theater Performance (BFA)
Law (JD)	Physics (PhD)	Theological Studies (MTS)
Limnology (MSL)	Piano Pedagogy & Performance (MM)	Theology (MDiv)
Management (BBA)	Political Science (BA)	Theory (BM)
Marketing (BBA)	Political Science (MA)	Undecided - Arts & Sciences (BA)
Mathematics (BA)	Political Science (PhD)	Undecided - Arts & Sciences (BS)
Mathematics (BS)	Pre-Business	Undecided - Business
Mathematics (MS)	Pre-Nursing	Undecided - Music
Mathematics (PhD)	Pre-Social Work	University Scholars (BA)
Mechanical Engineering (BSME)	Professional Selling (BBA)	
Mechanical Engineering (MSME)	Professional Writing (BA)	
Media Business (BBA)	Psychology (BA)	
Medical Humanities (BA)	Psychology (BS)	
Middle Grades English Lang Arts Reading (BSEd)	Psychology (PhD)	
Middle Grades Mathematics (BSEd)	Public Administration (BBA)	
Middle Grades Science (BSEd)	Public Policy & Administration (MPPA)	
Middle Grades Social Studies (BSEd)	Real Estate (BBA)	
Ministry (DMin)	Recreation (BSEd)	
Museum Studies (MA)	Religion (BA)	
Music (BA)	Religion (MA)	
Music Education (MM)	Religion (PhD)	
Music History & Literature (BM)	Religion, Politics and Society (PhD)	
Music History & Literature (MM)	Risk Management and Insurance (BBA)	
Music Theory (MM)	Russian (BA)	
Neonatal Nurse Practitioner (MSN)	School Psychology (EdS)	
Neuroscience (BS)	Secondary English Lang Arts Reading (BSEd)	
Neuroscience (MA)	Secondary Life Sciences (BSEd)	
Nondegree - Arts & Sciences	Secondary Mathematics (BSEd)	
Nondegree - Business	Secondary Physical Sciences (BSEd)	
Nondegree - Education	Secondary Social Studies (BSEd)	
Nondegree - Music	Slavic and East European Studies (BA)	
Nondegree - Nursing	Social Work (BSW)	
Nurse Practitioner (DNP)	Social Work (MSW)	
Nurse-Midwifery (DNP)	Social Work (PhD)	
Nursing (BSN)	Sociology (BA)	
Nutrition (MS)	Sociology (MA)	
Nutrition Sciences (BA)	Sociology (PhD)	
Nutrition Sciences (BS)	Spanish All-Level (BSEd)	
Nutrition Sciences (BSFCS)	Spanish (BA)	
Nutrition Sciences (MS)	Spanish (MA)	
Occupational Therapy (DScOT)	Special Education All-Level (BSEd)	
Pedagogy (BM)	Speech Communication (BA)	
Performance (MM)	Sports, Sponsorship & Sales (BBA)	
Philosophy (BA)	Statistics (BS)	
Philosophy (MA)	Statistics (MS)	
Philosophy (PhD)	Statistics (PhD)	
Physical Education All-Level (BSEd)	Studio Art (BA)	
Physical Therapy (DPT)	Studio Art (BFA)	
Physical Therapy (DScPT)	Taxation (MT)	
Physics (BA)	Theater Arts (BA)	
Physics (BS)	Theater Arts (MA)	
Physics (MA)	Theater Design and Technology (BFA)	

**Profile of First-Time Freshmen
Fall 2005 - Fall 2011**

	2005	2006	2007	2008	2009	2010	2011
New Freshmen Enrollment	3168	2783	2732	3062	3098	3259	3033
Men	41.0%	38.3%	40.6%	41.1%	41.1%	41.2%	41.4%
Women	59.0%	61.7%	59.4%	58.9%	58.9%	58.8%	58.6%
African American / Black	9.0%	6.4%	7.6%	7.9%	9.8%	8.1%	7.6%
Alaskan Native / Amer. Indiar	0.8%	0.7%	0.4%	1.0%	0.6%	0.2%	0.3%
Asian						7.8%	7.4%
Asian/Pacific Islander	7.8%	6.2%	8.5%	7.7%	7.7%		
Hispanic	11.0%	9.2%	10.5%	12.7%	14.9%	15.6%	12.6%
Pacific Islander						0.0%	0.1%
White	69.4%	75.9%	71.2%	68.5%	63.9%	63.4%	67.4%
Multiracial						4.8%	4.6%
Other	2.0%	1.5%	1.8%	2.1%	2.1%		
Not Specified/Unknown	0.1%	0.0%	0.0%	0.0%	0.9%	0.2%	0.1%
Residence							
Texas	81.2%	79.8%	77.9%	81.0%	79.8%	78.3%	73.8%
Out-of-State	17.6%	18.8%	20.6%	17.6%	18.5%	19.9%	24.2%
Foreign	1.1%	1.1%	1.4%	1.2%	1.5%	1.6%	1.7%
Unknown	0.1%	0.3%	0.1%	0.2%	0.2%	0.1%	0.3%
Average SAT Score (1)							
Number of Students	2284	1860	1801	2015	1808	1787	1529
Total SAT	1196	1213	1219	1210	1190	1218	1236
English	593	599	602	596	586	598	610
Math	604	614	617	614	604	620	627
Writing (2)		586	587	584	571	583	591
Average ACT Score (1)							
Number of Students	884	923	931	1046	1290	1472	1504
Composite	24.6	25.2	25.7	25.4	25.9	26.4	27.0
Reading	25.9	26.4	26.7	26.3	26.8	27.3	27.8
Math	23.6	24.5	25.0	24.9	25.3	25.8	26.2
Science	23.7	24.2	24.6	24.5	25.0	25.4	26.1
English	24.6	25.1	25.8	25.5	26.0	26.5	27.1
Writing (2)		24.2	24.8	24.5	24.2	24.7	25.0
High School Class Quartile (3)							
First Quartile	60.4%	61.3%	65.9%	60.9%	62.7%	58.6%	58.4%
Second Quartile	20.9%	20.1%	15.7%	19.5%	19.3%	19.4%	18.2%
Third Quartile	6.8%	5.2%	4.4%	4.1%	3.8%	4.2%	2.1%
Fourth Quartile	1.5%	0.8%	0.5%	0.4%	0.4%	0.3%	0.1%
No Rank	10.5%	12.6%	13.6%	15.1%	13.8%	17.4%	21.2%
Average Credit Hour Load	14.5	14.8	14.9	14.8	14.7	14.8	14.9

Notes:

1. In this table, the highest SAT score is compared to the highest ACT score for each student, and only the better is retained.
2. The ACT and SAT writing scores are not currently included in admissions decisions.
3. High School Class quartile rank is not available from all high schools.

**Profile of Undergraduate Transfers
Fall 2005 - Fall 2011**

	2005	2006	2007	2008	2009	2010	2011
Transfer Enrollment	422	494	452	404	422	417	449
Men	45.7%	43.9%	44.0%	41.1%	41.5%	47.0%	48.1%
Women	54.3%	56.1%	56.0%	58.9%	58.5%	53.0%	51.9%
African American / Black	9.0%	8.9%	11.3%	9.9%	12.1%	9.4%	11.4%
Alaskan Native / Amer. Indiar	0.0%	0.8%	0.9%	0.7%	1.4%	0.2%	0.2%
Asian						14.6%	10.5%
Asian/Pacific Islander	8.8%	6.1%	6.6%	8.2%	7.3%		
Hispanic	13.7%	15.2%	11.5%	11.9%	14.7%	14.4%	19.2%
Pacific Islander						0.2%	0.0%
White	66.4%	65.8%	67.3%	66.6%	61.4%	54.4%	52.8%
Multiracial						6.2%	5.1%
Other	1.9%	3.0%	2.4%	2.7%	2.4%		
Not Specified/Unknown	0.2%	0.2%	0.0%	0.0%	0.7%	0.5%	0.9%
Residence							
Texas	81.8%	83.8%	82.1%	77.5%	83.6%	70.7%	75.3%
Out-of-State	29.6%	3.4%	4.0%	20.5%	6.9%	15.3%	16.5%
Foreign	5.2%	3.6%	2.9%	6.4%	5.2%	13.7%	7.8%
Unknown	0.5%	0.6%	0.4%	0.0%	0.0%	0.2%	0.4%
Average SAT Score (1,2)							
Number of Students	146	149	168	137	134	128	140
Total SAT	1074	1100	1099	1115	1069	1095	1091
English	529	546	552	548	530	546	544
Math	546	555	548	566	540	549	547
Writing (3)			546	541	523	532	524
Average ACT Score (1,2)							
Number of Students	63	96	77	86	117	79	124
Composite	22.8	22.9	22.5	23.3	22.9	22.0	22.9
Reading	23.9	23.9	23.6	24.3	23.7	22.7	23.6
Math	21.7	22.2	21.3	22.9	22.5	21.4	22.5
Science	22.7	22.4	21.6	22.5	21.8	21.5	22.6
English	22.5	22.7	22.8	22.7	23.1	21.6	22.5
Writing (3)				22.3	23.1	21.2	21.8
High School Class Quartile (4)							
First Quartile	20.1%	18.4%	19.9%	23.0%	34.4%	23.5%	30.3%
Second Quartile	13.3%	12.8%	17.5%	16.3%	19.9%	22.1%	20.9%
Third Quartile	7.1%	6.5%	9.7%	8.4%	14.0%	14.1%	10.9%
Fourth Quartile	1.9%	3.2%	2.2%	2.2%	4.7%	5.0%	7.1%
No Rank	57.6%	59.1%	50.7%	50.0%	27.0%	35.3%	30.7%
Average Credit Hour Load	14.3	14.3	14.5	14.3	14.4	14.4	14.2

Notes:

1. Transfer students with strong credentials from their previous academic work are not required to submit entrance test scores to the university.
2. In this table, the highest SAT score is compared to the highest ACT score for each student, and only the better is retained.
3. The ACT and SAT writing scores are not currently included in admissions decisions.
4. High School Class quartile rank is not available from all high schools.

**Profile of Undergraduate Students
Fall 2005 - Fall 2011**

	2005	2006	2007	2008	2009	2010	2011
Undergraduate Student Enrollment	11825	11831	11902	12162	12149	12438	12575
Men	41.5%	40.6%	41.5%	41.8%	41.5%	42.2%	42.1%
Women	58.5%	59.4%	58.5%	58.2%	58.5%	57.8%	57.9%
African American / Black	8.0%	7.8%	7.8%	7.8%	8.1%	7.8%	7.9%
Alaskan Native / Amer. Indian	0.6%	0.6%	0.6%	0.8%	0.7%	0.4%	0.3%
Asian						7.8%	7.9%
Asian / Pacific Islander	7.3%	7.4%	7.8%	7.6%	7.7%		
Hispanic	9.8%	9.9%	10.4%	10.7%	11.6%	13.4%	13.6%
Pacific Islander						0.1%	0.1%
White	72.1%	72.2%	71.3%	71.1%	69.5%	66.3%	65.6%
Multiracial						4.0%	4.4%
Other	2.2%	2.0%	2.1%	2.0%	2.0%		
Not Specified/Unknown	0.0%	0.0%	0.0%	0.0%	0.3%	0.2%	0.2%
Residence							
Texas	82.4%	81.8%	81.2%	80.9%	80.8%	79.6%	78.0%
Out-of-State	15.4%	15.9%	16.7%	17.1%	17.1%	17.8%	19.2%
Foreign	1.6%	1.6%	1.8%	1.8%	1.9%	2.3%	2.5%
Unknown	0.6%	0.6%	0.3%	0.2%	0.2%	0.3%	0.3%
Average SAT Score (1)							
Number of Students	7,507	7,405	7,507	7,707	7,276	7,062	6,741
Total SAT	1185	1195	1202	1205	1203	1207	1212
English	586	590	594	595	593	594	596
Math	599	605	608	610	610	613	615
Writing (2)		582	585	585	582	582	583
Average ACT Score (1)							
Number of Students	3,567	3,648	3,650	3,761	4,255	4,684	5,134
Composite	24.5	24.6	24.9	25.1	25.6	25.9	26.2
Reading	25.6	25.7	26.0	26.2	26.5	26.7	27.0
Math	23.5	23.7	24.1	24.4	25.0	25.3	25.6
Science	23.7	23.7	24.0	24.2	24.6	24.9	25.3
English	24.4	24.5	24.9	25.1	25.7	25.9	26.3
Writing (2)		24.3	24.6	24.5	24.4	24.5	24.6
High School Class Quartile (3)							
First Quartile	55.9%	55.4%	57.2%	57.5%	58.6%	57.9%	56.7%
Second Quartile	20.6%	19.3%	18.3%	18.3%	18.1%	17.8%	17.9%
Third Quartile	6.5%	6.0%	5.7%	5.5%	5.1%	5.0%	4.2%
Fourth Quartile	1.7%	1.4%	1.0%	0.8%	0.8%	0.9%	0.9%
No Rank	15.3%	17.9%	17.8%	17.9%	17.4%	18.5%	20.3%
Average Credit Hour Load	14.6	14.8	14.9	14.9	14.9	15.0	15.0

Notes:

1. In this table, the highest SAT score is compared to the highest ACT score for each student, and only the better is retained.
2. The ACT and SAT writing scores are not currently included in admissions decisions.
3. High School Class quartile rank is not available from all high schools.

**Profile of Students in the Graduate School
Fall 2005 - Fall 2011**

	2005	2006	2007	2008	2009	2010	2011
Graduate School Enrollment	1171	1221	1213	1285	1468	1481	1482
Men	50.7%	48.8%	50.4%	49.2%	51.2%	50.2%	50.8%
Women	49.3%	51.2%	49.6%	50.8%	48.8%	48.3%	49.2%
African American / Black	5.1%	4.8%	4.5%	4.2%	4.2%	3.2%	3.8%
Alaskan Native / Amer. Indiar	0.9%	0.8%	0.8%	0.9%	0.8%	0.4%	0.2%
Asian						11.4%	11.4%
Asian / Pacific Islander	12.7%	11.4%	12.6%	11.9%	11.6%	0.0%	0.0%
Hispanic	6.7%	6.1%	6.4%	7.4%	6.9%	6.9%	7.0%
Pacific Islander						0.1%	0.1%
White	71.9%	73.5%	72.5%	73.0%	73.8%	74.3%	73.3%
Multiracial						2.8%	3.0%
Other	2.6%	3.4%	2.9%	2.6%	2.0%	0.0%	0.0%
Not Specified/Unknown	0.2%	0.1%	0.2%	0.0%	0.7%	0.9%	1.3%
Classification							
Master's Candidate	57.8%	59.0%	58.1%	58.3%	61.0%	59.6%	58.8%
Doctoral Candidate	40.4%	38.7%	39.8%	39.1%	36.9%	37.9%	39.1%
Graduate Other	0.9%	1.5%	1.3%	1.6%	1.6%	1.6%	1.6%
Non-Degree GR	0.9%	0.7%	0.7%	1.0%	0.6%	0.9%	0.5%
Average GRE Score							
Number of Students	972	998	975	1005	1048	1035	1028
Total (3)	1141	1158	1173	1175	1185	1202	1214
Verbal	522	532	538	536	541	551	555
Quantitative	618	627	635	638	643	651	659
Average GMAT Score							
Number of Students	94	114	113	119	217	218	211
Total	582	577	577	586	597	603	610
Verbal	32	32	32	33	34	35	35
Quantitative	38	38	37	38	38	38	39
Dual Program Students							
Undergraduate/Graduate	3.9%	3.1%	2.7%	3.3%	3.5%	4.2%	4.3%
Graduate/Graduate	1.8%	1.4%	1.2%	1.2%	0.6%	0.9%	0.6%
Law/Graduate	0.1%	0.2%	0.3%	0.5%	0.4%	0.3%	0.1%
Seminary/Graduate	2.3%	1.6%	0.7%	1.1%	0.8%	0.7%	0.7%
Average Credit Hour Load	7.3	7.6	7.7	7.7	7.9	7.9	8.0

Notes:

1. With the exception of the Graduate/Graduate dual programs, students in dual career programs are NOT counted in headcounts as graduate students.
2. Starting in Fall 2009, we began using program count.
3. Total GRE = Verbal + Quantitative

**Profile of Students in the School of Social Work
Fall 2005 - Fall 2011**

	2005	2006	2007	2008	2009	2010	2011
School of Social Work Enrollment	43	57	78	84	122	110	115
Men	7.0%	14.0%	11.5%	11.9%	18.0%	13.6%	13.9%
Women	93.0%	86.0%	88.5%	88.1%	82.0%	86.4%	86.1%
African American / Black	7.0%	10.5%	11.5%	9.5%	9.0%	10.9%	17.4%
Alaskan Native / Amer. Indian	0.0%	0.0%	1.3%	1.2%	2.5%	0.9%	0.9%
Asian						7.3%	9.6%
Asian / Pacific Islander	0.0%	1.8%	2.6%	4.8%	5.7%		
Hispanic	0.0%	5.3%	7.7%	9.5%	9.8%	14.5%	9.6%
Pacific Islander						0.0%	0.0%
White	90.7%	82.5%	75.6%	71.4%	68.0%	62.7%	60.0%
Multiracial						3.6%	2.6%
Other	2.3%	0.0%	1.3%	3.6%	4.9%		
Not Specified/Unknown	0.0%	0.0%	0.0%	0.0%	0.0%	3.6%	0.0%
Full-Time/Part-Time Status							
Full-Time	88.4%	87.7%	91.0%	91.7%	94.3%	96.4%	96.5%
Part-Time	11.6%	12.3%	9.0%	8.3%	5.7%	3.6%	3.5%
Classification							
Master's Candidate	43	57	78	84	122	110	115
Enrollee Type							
Entering Graduate Student	76.7%	77.2%	56.4%	71.4%	46.7%	40.0%	47.8%
Continuing Student	23.3%	22.8%	43.6%	28.6%	43.4%	52.7%	42.6%
Entering Seminary Student					9.8%	7.3%	9.6%
Dual Program Students							
Seminary/Social Work	65.1%	49.1%	41.0%	39.3%	35.2%	35.5%	27.8%
Average Credit Hour Load	12.9	12.8	14.0	13.8	13.6	13.7	14.1

Notes:

1. Starting in Fall 2009, we began using program count.

**Profile of Law Students
Fall 2005 - Fall 2011**

	2005	2006	2007	2008	2009	2010	2011
Law School Enrollment	432	400	413	423	465	466	445
Men	54.6%	56.8%	60.5%	56.5%	52.9%	50.2%	48.1%
Women	45.4%	43.3%	39.5%	43.5%	47.1%	49.8%	51.9%
African American / Black	1.2%	1.3%	1.0%	1.2%	2.6%	2.4%	2.0%
Alaskan Native / Amer. Indian	1.2%	0.3%	0.0%	0.2%	0.2%	0.4%	0.2%
Asian						7.3%	4.7%
Asian / Pacific Islander	4.9%	6.3%	5.3%	7.3%	9.0%		
Hispanic	3.9%	4.0%	4.1%	3.8%	7.5%	8.4%	8.3%
Pacific Islander						0.4%	0.0%
White	86.8%	86.0%	87.9%	85.8%	78.9%	77.3%	81.3%
Multiracial						3.0%	2.9%
Other	2.1%	2.3%	1.7%	1.7%	1.5%		
Not Specified/Unknown	0.0%	0.0%	0.0%	0.0%	0.2%	0.9%	0.4%
Classification							
Juris Doctorate	100.0%	99.5%	99.5%	100.0%	100.0%	100.0%	99.8%
Non-Degree LW	0.0%	0.5%	0.5%	0.0%	0.0%	0.0%	0.2%
Enrollee Type							
Entering Law Student	19.0%	17.5%	16.7%	18.9%	18.5%	22.7%	14.2%
Continuing Student	81.0%	82.0%	82.8%	81.1%	81.5%	77.3%	85.6%
Other	0.0%	0.5%	0.5%	0.0%	0.0%	0.0%	0.2%
Average LSAT Score	160	161	160	160	159	160	161
Number of Students	416	363	380	395	375	352	326
Full-Time/Part-Time Status							
Full-Time	97.5%	98.3%	99.3%	98.3%	97.6%	98.1%	98.2%
Part-Time	2.5%	1.8%	0.7%	1.7%	2.4%	1.9%	1.8%
Dual Program Students							
Law/Graduate	0.2%	0.8%	1.0%	1.4%	1.3%	1.1%	0.4%
Average Credit Hour Load	13.0	13.3	13.1	13.2	13.3	13.3	13.5

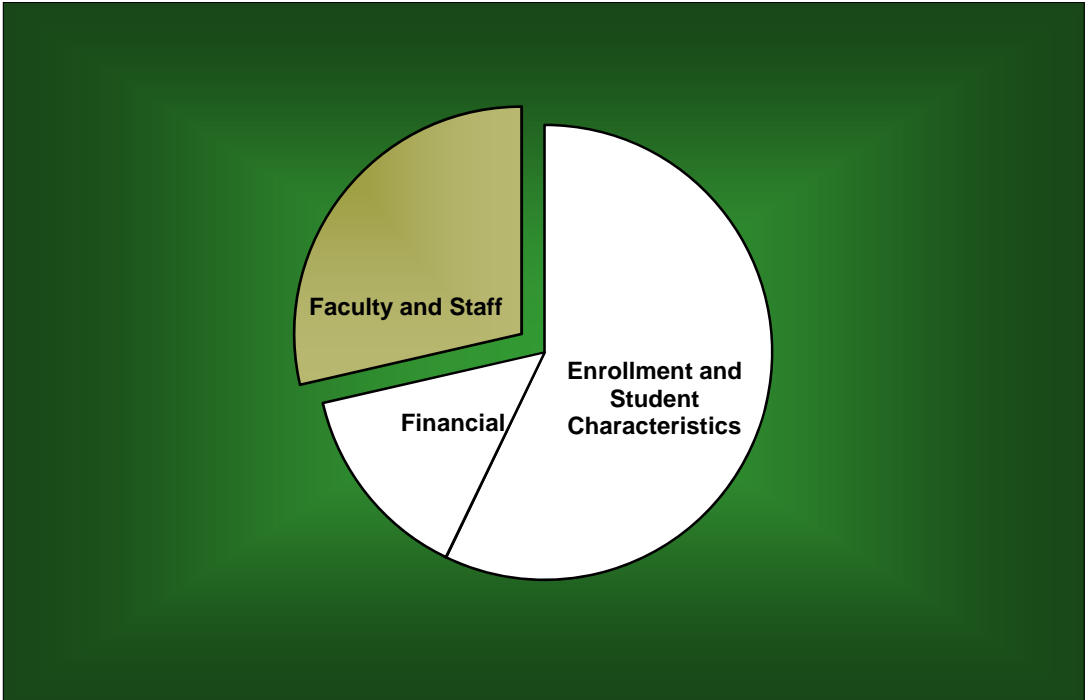
**Profile of Seminary Students
Fall 2005 - Fall 2011**

	2005	2006	2007	2008	2009	2010	2011
Seminary Enrollment	385	377	402	406	399	369	356
Men	67.5%	70.3%	70.4%	69.2%	64.9%	63.4%	64.0%
Women	32.5%	29.7%	29.6%	30.8%	35.1%	36.6%	36.0%
African American / Black	7.5%	9.3%	10.4%	12.8%	12.8%	13.3%	12.1%
Alaskan Native / Amer. Indian	0.5%	0.3%	0.5%	0.5%	0.8%	0.3%	0.0%
Asian						2.8%	2.5%
Asian / Pacific Islander	1.3%	2.1%	2.7%	1.7%	2.8%		
Hispanic	6.5%	8.2%	7.5%	7.9%	6.8%	7.0%	7.9%
Pacific Islander						0.3%	0.3%
White	83.4%	79.3%	78.1%	76.4%	74.7%	73.2%	72.8%
Multiracial						3.4%	4.5%
Other	0.8%	0.5%	0.7%	0.7%	2.3%		
Not Specified/Unknown	0.0%	0.3%	0.0%	0.0%	0.0%	0.0%	0.0%
Classification							
Seminary Masters	89.4%	88.6%	90.8%	90.4%	91.2%	89.4%	89.6%
Seminary Doctoral	10.1%	11.1%	9.0%	9.4%	8.8%	10.6%	10.4%
Non-Degree SM	0.5%	0.3%	0.2%	0.2%	0.0%	0.0%	0.0%
Enrollee Type							
Continuing Student	73.8%	76.9%	76.6%	76.6%	80.2%	76.7%	75.0%
Entering Seminary Student	26.2%	23.1%	23.4%	23.4%	19.8%	23.3%	25.0%
Other	0.0%	0.0%	0.0%	0.0%	0.0%	0.0%	0.0%
Full-Time/Part-Time Status							
Full-Time	77.4%	81.4%	80.3%	77.1%	76.7%	78.3%	79.8%
Part-Time	22.6%	18.6%	19.7%	22.9%	23.3%	21.7%	20.2%
Dual Program Students							
Seminary/Graduate	7.0%	5.0%	2.2%	3.4%	3.0%	2.7%	2.8%
Seminary/Social Work	7.3%	7.4%	8.0%	8.1%	10.8%	10.6%	9.0%
Undergraduate/Seminary	0.5%	0.3%	0.0%	0.0%	0.0%	0.0%	0.0%
Average Credit Hour Load	9.5	9.5	9.3	9.2	9.3	9.5	9.5

Notes:

1. Students classified as Undergraduate/Seminary are counted as Undergraduates and are included in this table for informational purposes only.
2. Starting in Fall 2009, we began using program count.

Faculty and Staff



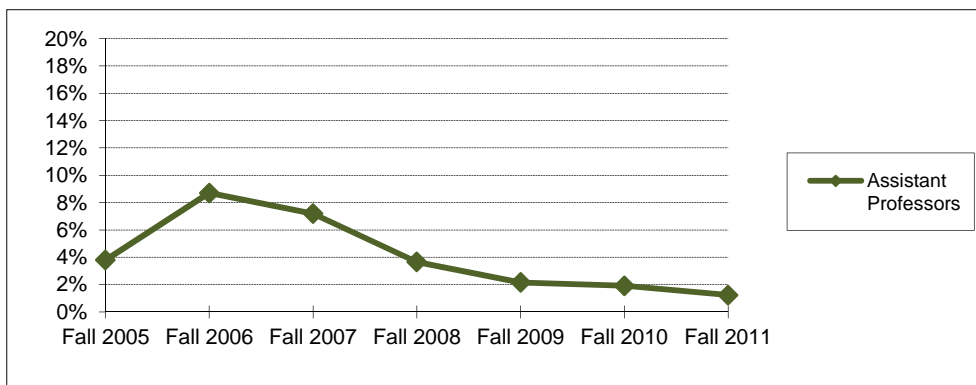
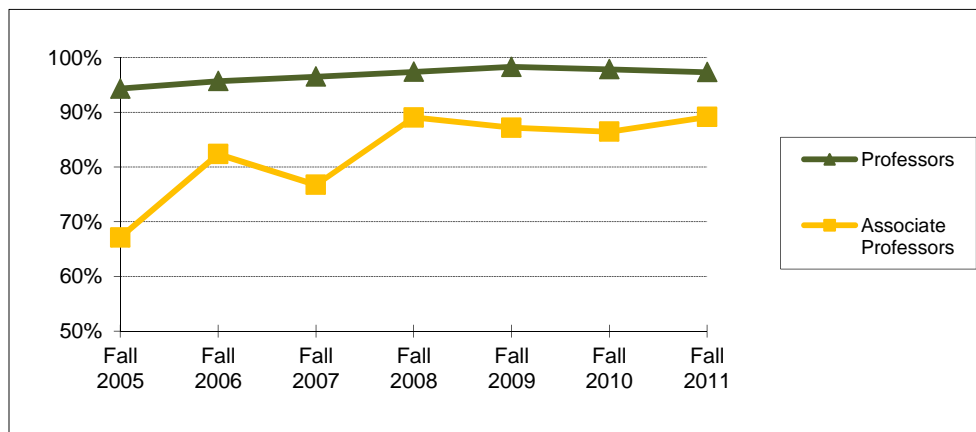
**Full-Time Faculty Positions (AAUP Definition)
Fall 2005 - Fall 2011**

Rank	Fall 2005		Fall 2006		Fall 2007		Fall 2008		Fall 2009		Fall 2010		Fall 2011	
	Male	Female	Male	Female	Male	Female	Male	Female	Male	Female	Male	Female	Male	Female
Professors:														
Number	197	32	198	35	195	36	195	36	198	39	200	34	193	33
Tenured	186	30	188	35	187	36	189	36	195	38	196	33	189	31
Associate Prof.:														
Number	108	44	124	46	131	54	139	62	147	64	144	70	143	69
Tenured	68	34	100	40	100	42	123	56	129	55	127	58	131	58
Assistant Prof:														
Number	98	60	84	54	96	57	83	54	81	58	91	66	94	69
Tenured	2	4	5	7	4	7	2	3	1	2	1	2	0	2
Instructors:														
Number	0	1	0	1	0	1	0	1	0	1	0	1	0	1
Tenured	0	1	0	1	0	1	0	1	0	1	0	1	0	1
Senior Lecturers:														
Number	21	33	21	33	27	38	32	52	44	65	48	67	48	72
Lecturers:														
Number	70	91	75	96	78	100	70	99	67	95	61	88	72	92
Total Number	494	261	502	265	527	286	519	304	537	322	544	326	550	336
Total Tenured	256	69	293	83	291	86	314	96	325	96	324	94	320	92

**Highest Degree Earned by Full-Time Faculty
Fall 2005 - Fall 2011**

	Fall 2005	Fall 2006	Fall 2007	Fall 2008	Fall 2009	Fall 2010	Fall 2011
Associate's	0	0	0	0	0	0	1
Bachelor's	6	5	3	2	2	4	3
Master's	200	180	190	201	199	196	197
Doctoral	566	591	631	633	673	690	705
Professional	24	28	27	27	29	26	29
Total	796	804	851	863	903	916	935

**Percentage of Full-Time Faculty with Tenure (AAUP Definition)
Fall 2005 - Fall 2011**



	Fall 2005	Fall 2006	Fall 2007	Fall 2008	Fall 2009	Fall 2010	Fall 2011
Professors	94.3%	95.7%	96.5%	97.4%	98.3%	97.9%	97.3%
Associate Professors	67.1%	82.4%	76.8%	89.1%	87.2%	86.4%	89.2%
Assistant Professors	3.8%	8.7%	7.2%	3.6%	2.2%	1.9%	1.2%
Instructors	100.0%	100.0%	100.0%	100.0%	100.0%	100.0%	100.0%
All Faculty	43.0%	49.0%	46.4%	49.8%	49.0%	48.0%	46.5%

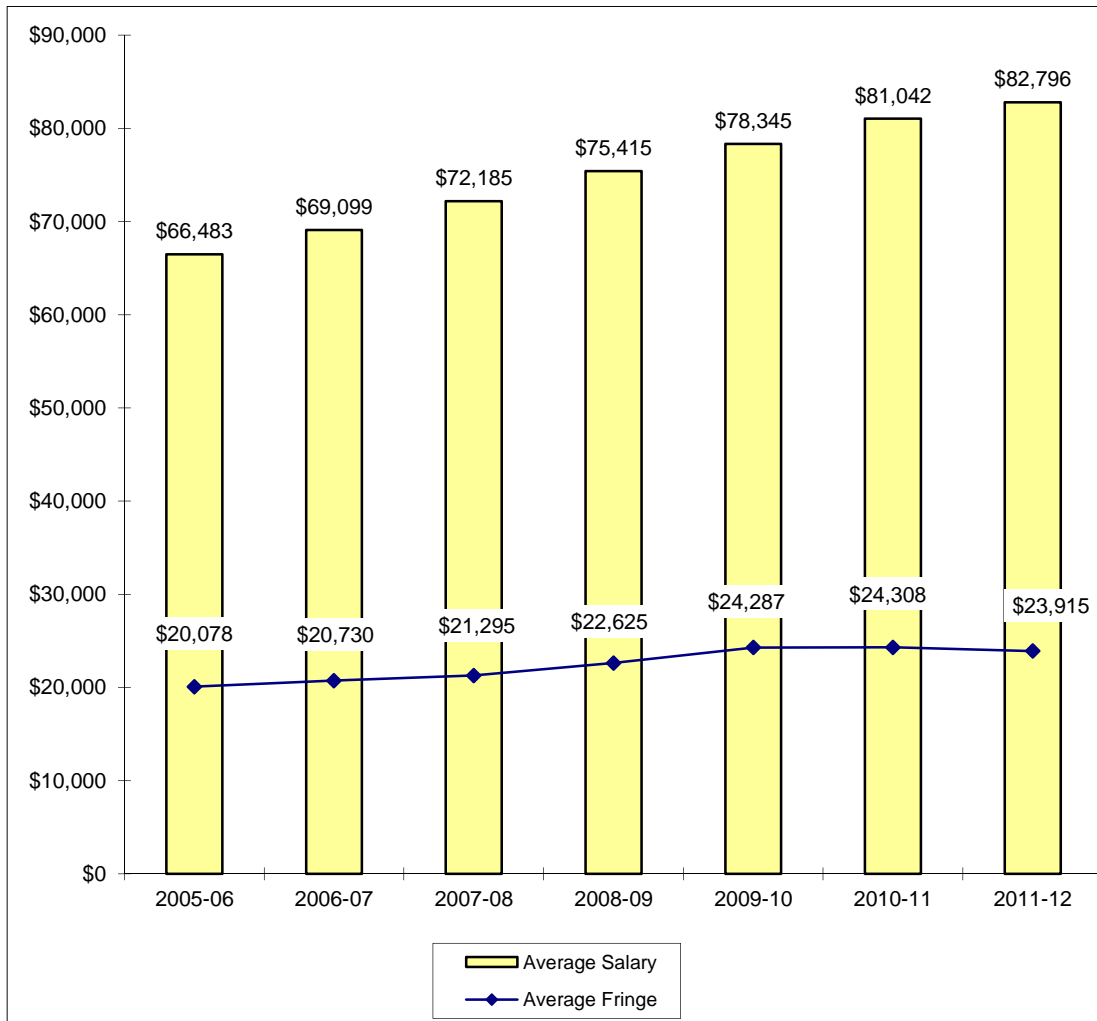
**Average Salaries of Full-Time Instructional Faculty
on Academic Year Contracts (AAUP Definition)
Fall 2005 - Fall 2011**

Rank	Fall 2005		Fall 2006		Fall 2007		Fall 2008	
	Number in Rank	Average Salary	Number in Rank	Average Salary	Number in Rank	Average Salary	Number in Rank	Average Salary
Professor	229	\$89,219	233	\$92,385	231	\$97,241	231	\$102,398
Associate Professor	152	\$68,432	170	\$70,179	185	\$74,681	201	\$78,043
Assistant Professor	158	\$52,385	138	\$67,143	153	\$69,536	137	\$70,562
Instructor	1	*	1	*	1	*	1	*
Senior Lecturer	54	\$48,728	54	\$50,950	65	\$52,175	84	\$55,668
Lecturer	161	\$42,388	171	\$43,710	178	\$46,765	169	\$49,274
All Ranks	755	\$66,483	767	\$69,099	813	\$72,185	823	\$75,415
Average Fringe		\$20,078		\$20,730		\$21,295		\$22,625
Fringe as a Percentage of Average Salary		30.2%		30.0%		29.5%		30.0%
Percentage Increase in Average Salary for Continuing Faculty		3.4%		5.0%		6.0%		5.8%

Rank	Fall 2009		Fall 2010		Fall 2011	
	Number in Rank	Average Salary	Number in Rank	Average Salary	Number in Rank	Average Salary
Professor	237	\$106,504	234	\$111,145	226	\$115,932
Associate Professor	211	\$81,618	214	\$83,620	212	\$88,267
Assistant Professor	139	\$73,872	157	\$74,581	163	\$74,988
Instructor	1	*	1	*	1	*
Senior Lecturer	109	\$57,263	115	\$59,034	120	\$60,410
Lecturer	162	\$51,032	149	\$53,574	164	\$54,327
All Ranks	859	\$78,345	870	\$81,042	886	\$82,796
Average Fringe		\$24,287		\$24,308		\$23,915
Fringe as a Percentage of Average Salary		31.0%		30.0%		28.9%
Percentage Increase in Average Salary for Continuing Faculty		4.6%		3.3%		3.1%

*Data not displayed for five or fewer faculty.

**Average Compensation of Full-Time Instructional Faculty
on Academic Year Contracts
2005-06 through 2011-12**

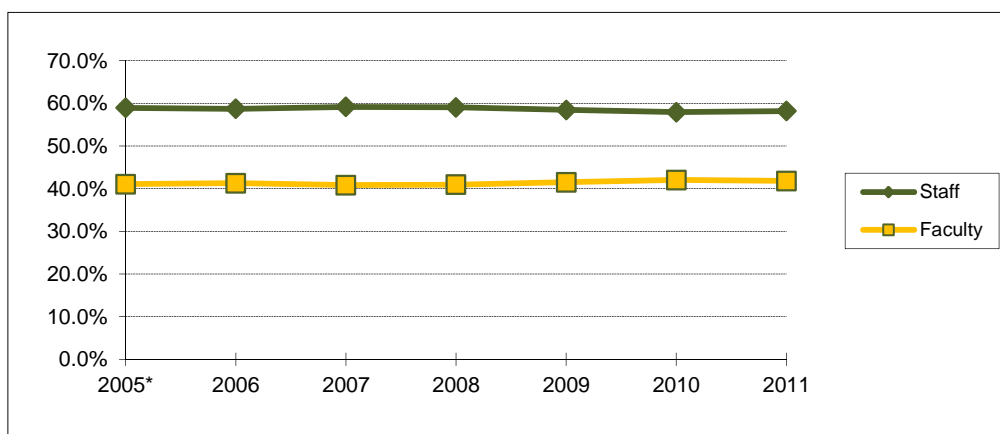


Institutional Staff Fall 2005 - Fall 2011

Fall	2005*	2006	2007	2008	2009	2010	2011
Faculty:							
Full-Time	755	767	813	823	861	872	896
Part-Time	155	161	159	171	189	214	205
Executive/Administrative:							
Full-Time	221	251	275	285	313	347	393
Part-Time	1	1	1	2	1	3	3
Other Professional:							
Full-Time	500	476	532	566	580	581	580
Part-Time	18	16	18	22	17	15	18
Technical/Paraprofessional:							
Full-Time	105	139	143	128	132	128	123
Part-Time	17	18	18	17	17	12	10
Clerical/Secretarial:							
Full-Time	335	332	325	323	335	327	320
Part-Time	33	27	33	27	22	23	28
Skilled Crafts:							
Full-Time	7	7	7	7	7	6	5
Part-Time	1	1	0	0	0	0	0
Service/Maintenance:							
Full-Time	58	42	47	49	47	49	48
Part-Time	10	10	10	8	8	6	4
Total:							
Full-Time	1981	2014	2142	2181	2275	2310	2365
Part-Time	235	234	239	247	254	273	268
Grand Total	2216	2248	2381	2428	2529	2583	2633

*2005 shifts in categorization of employees due to internal reclassification and IPEDS reporting changes.

Percentage of Institutional Staff Fall 2005 - Fall 2011



Fall	2005*	2006	2007	2008	2009	2010	2011
Staff	58.9%	58.7%	59.2%	59.1%	58.5%	58.0%	58.2%
Faculty	41.1%	41.3%	40.8%	40.9%	41.5%	42.0%	41.8%

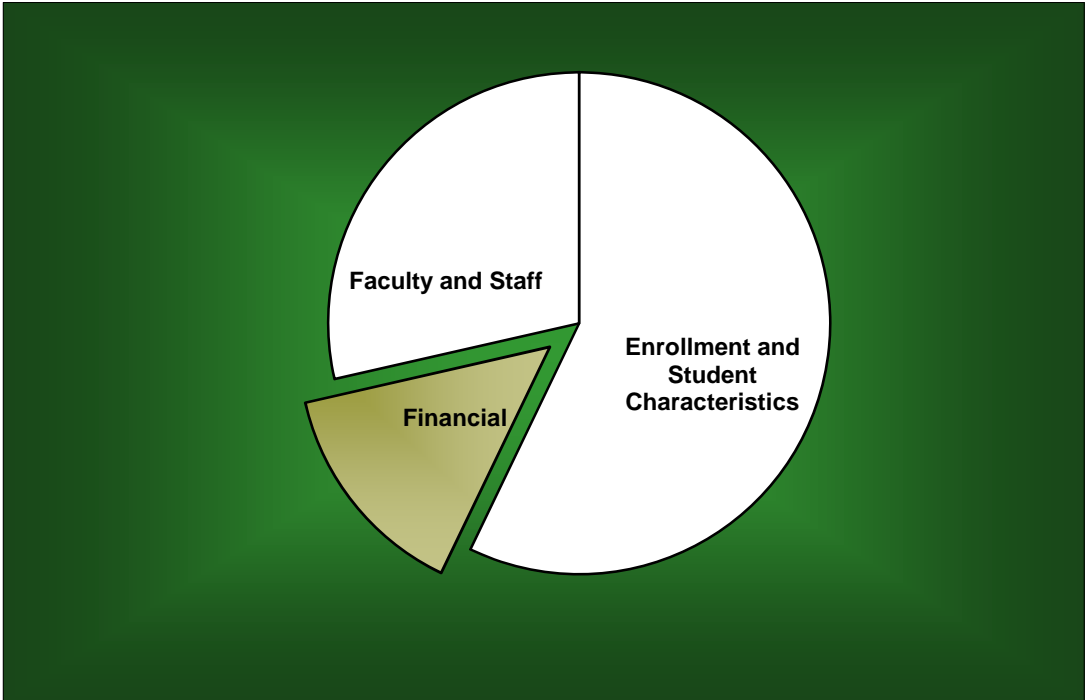
**Full-Time Faculty by Religious Affiliation
Fall 2005 - Fall 2011**

Fall	2005	2006	2007	2008	2009	2010	2011
Assembly of God	1	1	2	2	4	3	3
Baptist	375	368	379	381	393	392	402
Catholic	79	81	87	91	99	105	107
Church of Christ	18	22	23	24	26	27	25
Disciples of Christ	11	11	12	11	11	11	10
Episcopalian	54	56	60	60	60	62	60
Lutheran	47	46	51	52	55	55	55
Methodist	78	75	78	77	79	78	71
Non-/Inter-Denominational	24	24	28	18	21	25	40
Presbyterian	49	54	59	56	60	62	66
Other / Unspecified	60	66	72	91	95	96	96
Total	796	804	851	863	903	916	935

**Full-Time Staff by Religious Affiliation
Fall 2005 - Fall 2011**

Fall	2005	2006	2007	2008	2009	2010	2011
Assembly of God	9	8	9	8	7	6	6
Baptist	618	612	646	645	683	719	727
Catholic	108	117	128	138	146	138	146
Church of Christ	35	36	36	36	42	43	42
Disciples of Christ	18	16	13	12	12	10	10
Episcopalian	26	21	25	30	33	35	31
Lutheran	35	40	40	46	46	45	46
Methodist	110	117	124	128	126	123	121
Non-/Inter-Denominational	63	81	98	99	103	101	125
Presbyterian	27	33	36	38	36	34	34
Other / Unspecified	96	98	104	108	105	109	110
Total	1145	1179	1259	1288	1339	1363	1398

Financial



**Undergraduate Tuition and Other Semester Charges
2005-06 through 2011-12**

	2005-06	2006-07	2007-08	2008-09	2009-10	2010-11	2011-12
UG Grandfathered Tuition per Hour (8)	\$490.00						
Increase from Prior Year	6.3%						
UG Tuition per Semester Hour (9)	\$794.00	\$857.00	\$925.00	\$986.00	\$1,055.00	\$1,124.00	\$1,197.00
Increase from Prior Year	6.4%	7.9%	7.9%	6.6%	7.0%	6.5%	6.5%
UG Flat Tuition Semester Rate (7)	\$ 9,525	\$ 10,287	\$11,110	\$ 11,832	\$ 12,660	\$ 13,483	\$ 14,360
Increase from Prior Year	6.4%	8.0%	8.0%	6.5%	7.0%	6.5%	6.5%
Application Fee (UG)	50.00	50.00	50.00	50.00	50.00	50.00	50.00
Applied Music Fee(1)	151.00	163.00	175.00	186.00	199.00	212.00	226.00
Change-of-Course Fee	20.00	20.00	20.00	20.00	20.00	20.00	20.00
Chapel-Forum Fee	55.00	55.00	55.00	55.00	60.00	60.00	65.00
Credit by Baylor Exam Fee	245.00	265.00	286.00	305.00	326.00	347.00	370.00
General Student Fee	800.00	1,070.00	1,135.00	1,210.00	1,295.00	1,379.00	1,469.00
Enrollment Deposit (2)	100.00	100.00	100.00	100.00	300.00	300.00	300.00
Lab/Course Fees (3)	50.00	50.00	50.00	50.00	50.00	50.00	50.00
Late Registration Fee (4)	50.00	50.00	50.00	75.00	50.00	75.00	75.00
Technology Fee (10)	210.00						
Vehicle Registration Fee (5)	175.00	175.00	175.00	200.00	225.00	225.00	245.00
Room (Freshmen in Penland/Collins)	1,673.00	1,797.00	1,887.00	2,000.00	2,120.00	2,247.00	2,359.00
Increase from Prior Year	7.2%	7.4%	5.0%	6.0%	6.0%	6.0%	5.0%
Board (6)	1,569.63	1,669.63	1,732.41	1,781.38	1,865.56	1,918.60	1,972.73
Increase from Prior Year	3.0%	6.4%	3.8%	2.8%	4.7%	2.8%	2.8%

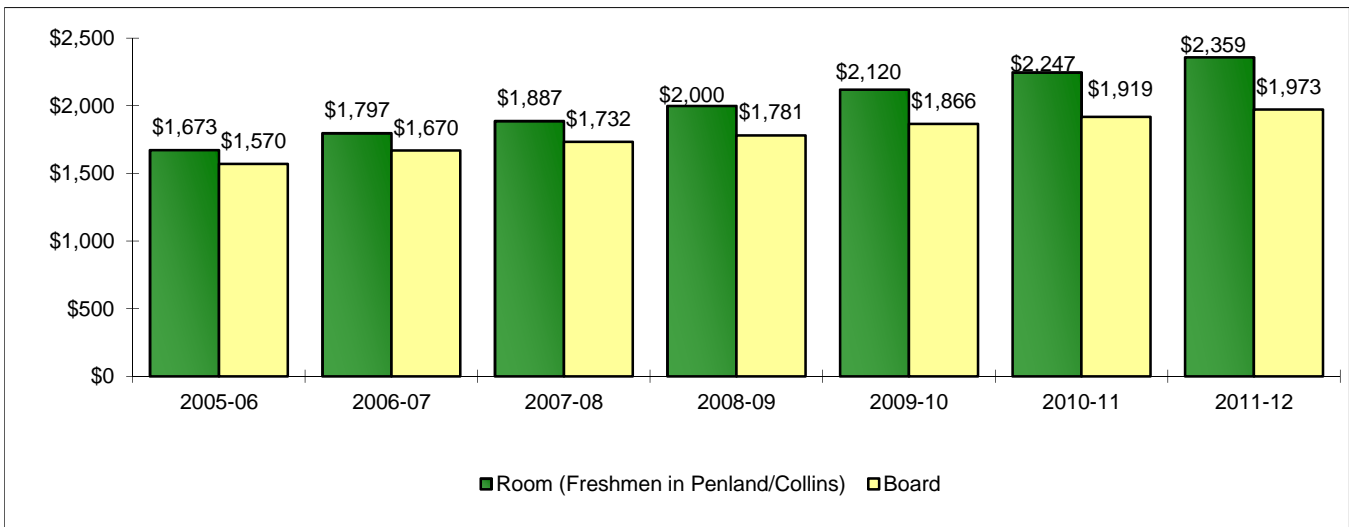
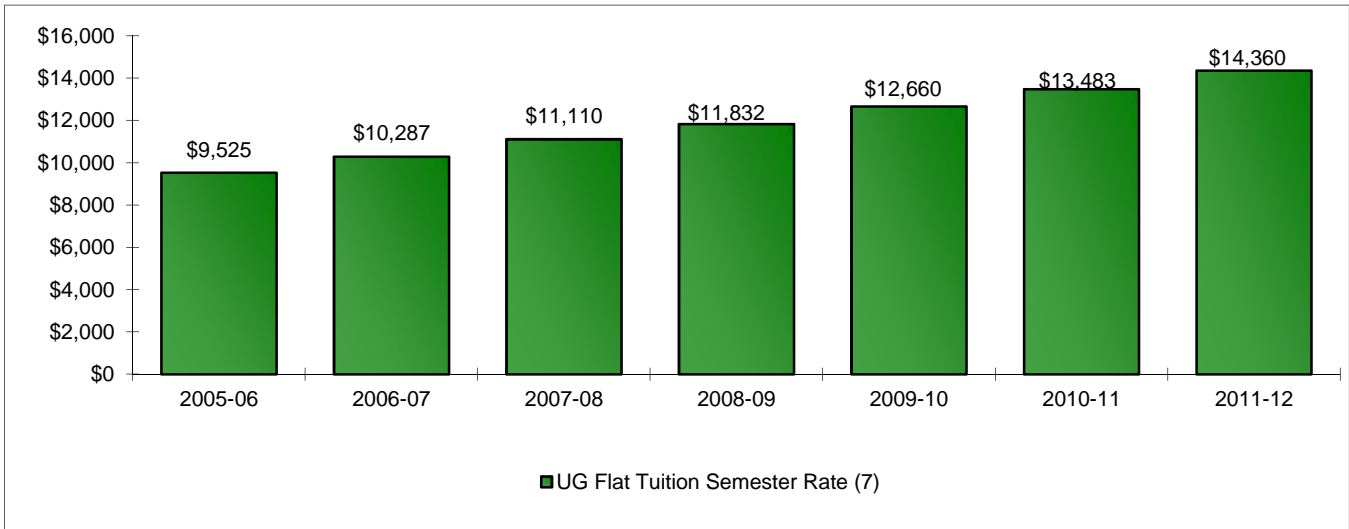
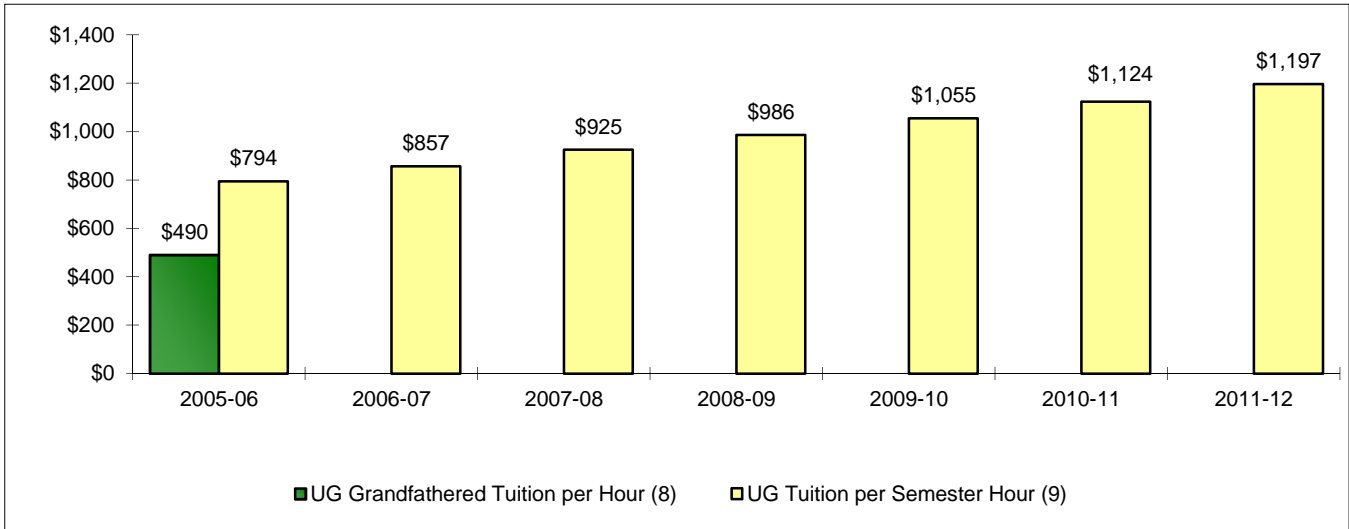
Increase in Semester Charges from 2005-06 to 2011-12:

Tuition, flat tuition rate	50.8%
Tuition, per semester hour	50.8%
Room	41.0%
Board	25.7%

Notes:

- (1) Supplemental charge per semester for one 30-minute lesson per week.
- (2) The Enrollment Deposit is paid to assure enrollment place and is applied on the student's first semester bill. Beginning in 2009-10, the fee also serves as the application for on-campus housing.
- (3) Minimum lab fee is noted; some courses may be higher.
- (4) Minimum charges are noted; charges vary.
- (5) Annual automobile fee (September - August).
- (6) The 2005-06 Board rate reflects the "Classic - 16 Meal Plan" but meal plan does not include BearBucks. The 2006-07 Board rate reflects the "Classic - 16 Meal Plan" + \$100 Dining Dollars. The Board rates for 2007-08 and later reflect "The Works - 16 Meal Plan" + \$100 Dining Dollars.
- (7) Beginning in 2002-03, a flat tuition rate was instituted for new undergraduate students taking 12 or more hours per semester (Fall and Spring).
- (8) Beginning in 2002-03, the tuition per semester hour rate is applicable for students who were enrolled at Baylor prior to June 1, 2002 (grandfathered rate). The grandfathered tuition rate was discontinued after the 2005-06 fiscal year.
- (9) Tuition per semester hour for new students taking less than 12 hours.
- (10) Technology fee is now combined with General Student Fee.

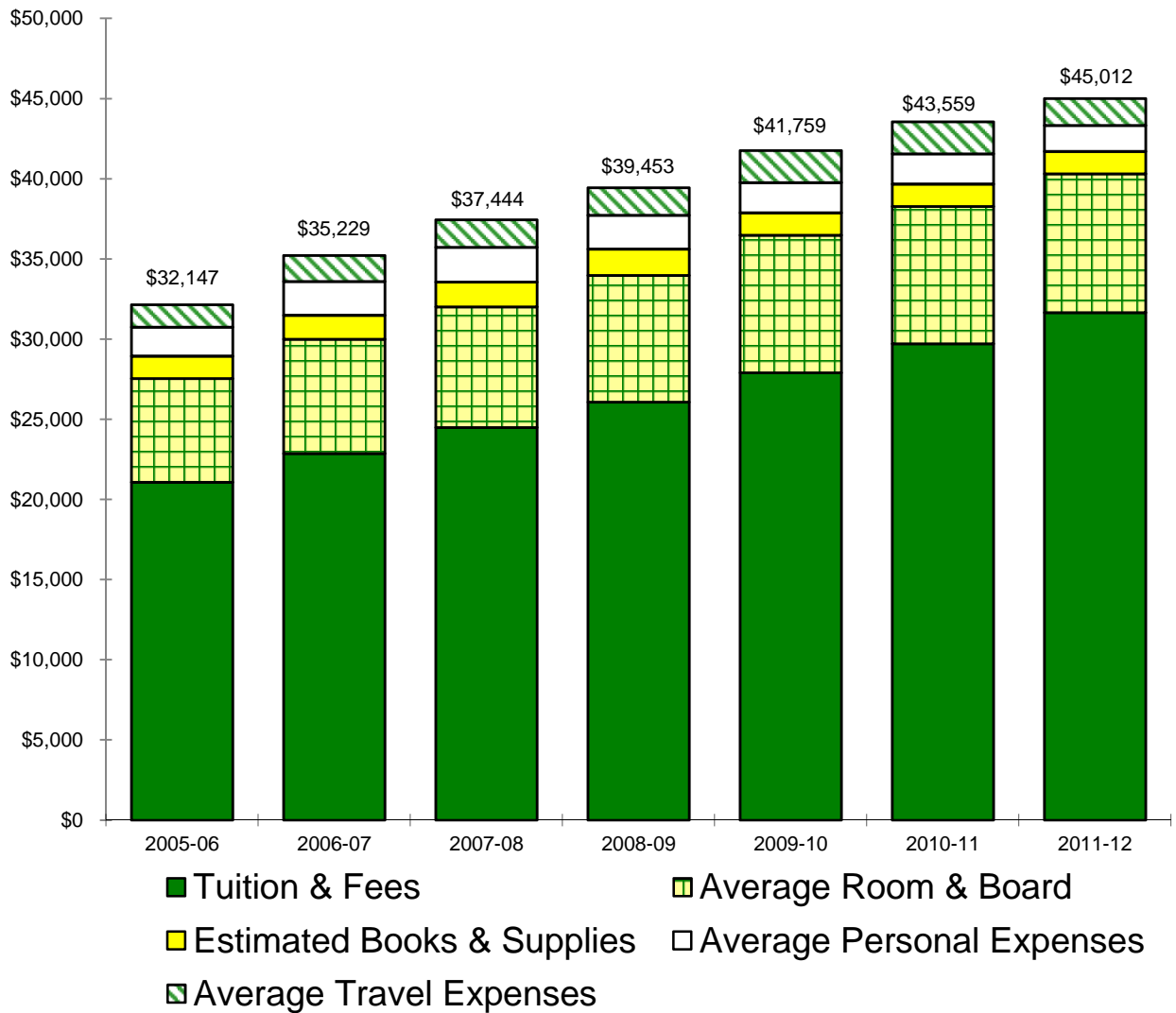
Tuition, Room and Board Charges 2005-06 through 2011-12



See notes on page 54.

Annual Undergraduate Student Cost Profile 2005-06 through 2011-12

	2005-06	2006-07	2007-08	2008-09	2009-10	2010-11	2011-12
Tuition & Fees	\$21,070	\$22,869	\$24,490	\$26,084	\$27,910	\$29,724	\$31,658
Average Room & Board	6,485	7,125	7,526	7,895	8,569	8,555	8,664
Estimated Books & Supplies	1,382	1,502	1,548	1,634	1,398	1,398	1,390
Average Personal Expenses	1,813	2,108	2,172	2,120	1,890	1,890	1,620
Average Travel Expenses	1,397	1,625	1,708	1,720	1,992	1,992	1,680
Average Total Cost	\$32,147	\$35,229	\$37,444	\$39,453	\$41,759	\$43,559	\$45,012
Increase from Prior Year	7.2%	9.6%	6.3%	5.4%	5.8%	4.3%	3.3%



**Operating Funds
2004-05 through 2010-11**

Sources of Revenues

	2004-05	2005-06	2006-07	2007-08	2008-09	2009-10	2010-11
Tuition & Fees	\$253,947,979	\$286,798,199	\$313,899,972	\$342,097,694	\$373,028,202	\$399,350,958	\$432,090,266
Gifts/Private Grants	4,106,405	4,667,051	4,954,597	6,439,884	5,492,860	5,499,890	6,297,243
BGCT Appropriation	3,721,275	3,517,856	3,504,658	3,439,127	3,336,082	2,940,461	2,759,139
Endowment Income	22,429,350	22,661,361	23,424,913	23,663,760	24,802,676	24,657,012	25,662,115
Investment Income	1,333,628	3,913,218	6,053,815	4,993,909	3,213,098	2,994,725	3,025,919
Other Sources	15,406,112	14,707,559	17,042,155	17,791,539	17,706,402	17,827,038	18,914,063
Auxiliary Enterprises	40,774,330	45,675,394	46,691,476	51,684,175	59,229,289	65,559,816	70,350,843
Total Revenues	\$341,719,079	\$381,940,638	\$415,571,586	\$450,110,088	\$486,808,609	\$518,829,900	\$559,099,588

Sources of Revenues as a Percentage of Total Revenues

	2004-05	2005-06	2006-07	2007-08	2008-09	2009-10	2010-11
Tuition & Fees	74.3%	75.1%	75.4%	75.9%	76.7%	77.1%	77.4%
Gifts/Private Grants	1.2%	1.2%	1.2%	1.4%	1.1%	1.1%	1.1%
BGCT Appropriation	1.1%	0.9%	0.8%	0.8%	0.7%	0.6%	0.5%
Endowment Income	6.7%	5.9%	5.6%	5.3%	5.1%	4.8%	4.6%
Investment Income	0.4%	1.0%	1.5%	1.1%	0.7%	0.6%	0.5%
Other Sources	4.5%	3.9%	4.1%	4.0%	3.6%	3.4%	3.4%
Auxiliary Enterprises	11.9%	12.0%	11.2%	11.4%	12.1%	12.6%	12.6%
Total Revenues	100.0%	100.0%	100.0%	100.0%	100.0%	100.0%	100.0%

Note: The 2007-08 amount for Other Sources was corrected in Fall 2009.

Operating Funds (Continued)
2004-05 through 2010-11

Expenditures by Function & Transfers

	2004-05	2005-06	2006-07	2007-08	2008-09	2009-10	2010-11
Instruction	\$113,783,712	\$114,841,749	\$128,567,485	\$136,841,541	\$147,664,892	\$156,929,981	\$166,746,483
Acad Support/Research/PS	25,637,473	26,511,262	28,969,003	31,042,840	34,406,883	36,252,886	38,807,111
Student Services	19,276,167	19,926,881	20,460,020	22,113,403	25,155,946	26,324,631	28,043,339
Plant Operation/Maintenance	36,228,820	39,746,168	50,405,094	44,584,892	41,588,549	44,332,209	42,855,651
Institutional Support	37,977,656	42,191,169	41,187,651	43,132,354	49,131,930	50,914,058	53,478,848
Scholarships & Fellowships	58,837,752	72,429,465	78,291,693	92,184,669	105,128,732	121,019,447	139,567,596
Auxiliary Enterprises	45,499,135	51,076,247	53,951,060	64,132,500	67,659,956	72,367,741	75,033,886
Discretionary Transfers	4,469,901	15,206,432	13,692,811	16,040,213	16,042,645	10,667,052	14,560,172
Total Exp. & Transfers	341,710,616	381,929,373	415,524,817	450,072,412	486,779,533	518,808,005	559,093,086
Excess Revenues	\$8,463	\$11,265	\$46,769	\$37,676	\$29,076	\$21,895	\$6,502

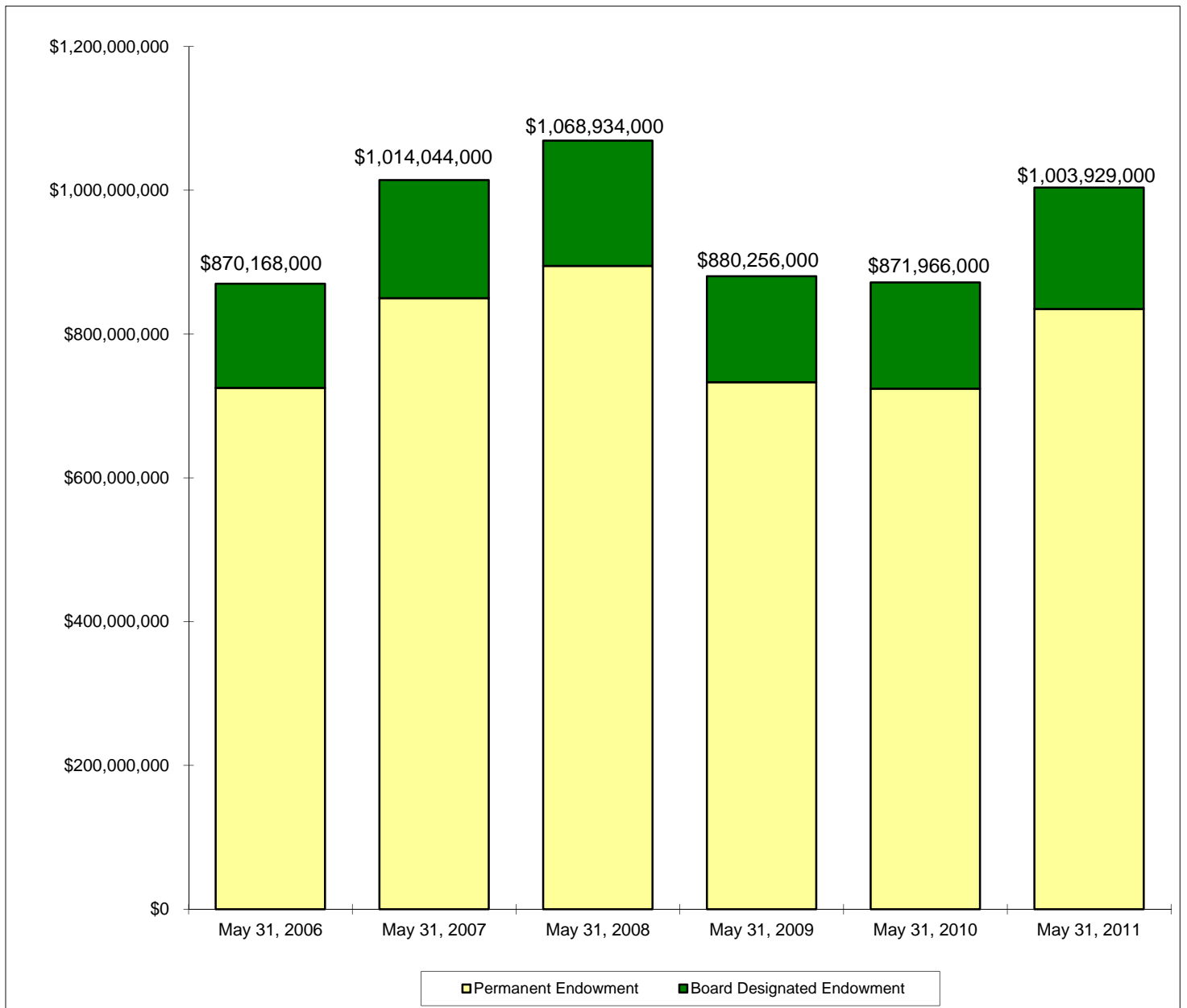
Percentage of Total Expenditures & Transfers

	2004-05	2005-06	2006-07	2007-08	2008-09	2009-10	2010-11
Instruction	33.3%	30.1%	30.9%	30.4%	30.3%	30.2%	29.8%
Gifts/Private Grants	7.5%	6.9%	7.0%	6.9%	7.1%	7.0%	6.9%
Student Services	5.6%	5.2%	4.9%	4.9%	5.2%	5.1%	5.0%
Plant Operation/Maintenance	10.6%	10.4%	12.1%	9.9%	8.5%	8.5%	7.7%
Institutional Support	11.1%	11.0%	9.9%	9.6%	10.1%	9.8%	9.6%
Scholarships & Fellowships	17.2%	19.0%	18.8%	20.5%	21.6%	23.3%	25.0%
Auxiliary Enterprises	13.3%	13.4%	13.0%	14.2%	13.9%	13.9%	13.4%
Discretionary Transfers	1.3%	4.0%	3.3%	3.6%	3.3%	2.1%	2.6%
Total Exp. & Transfers	100.0%	100.0%	100.0%	100.0%	100.0%	100.0%	100.0%

Note: The 2007-08 amounts were corrected in Fall 2009.

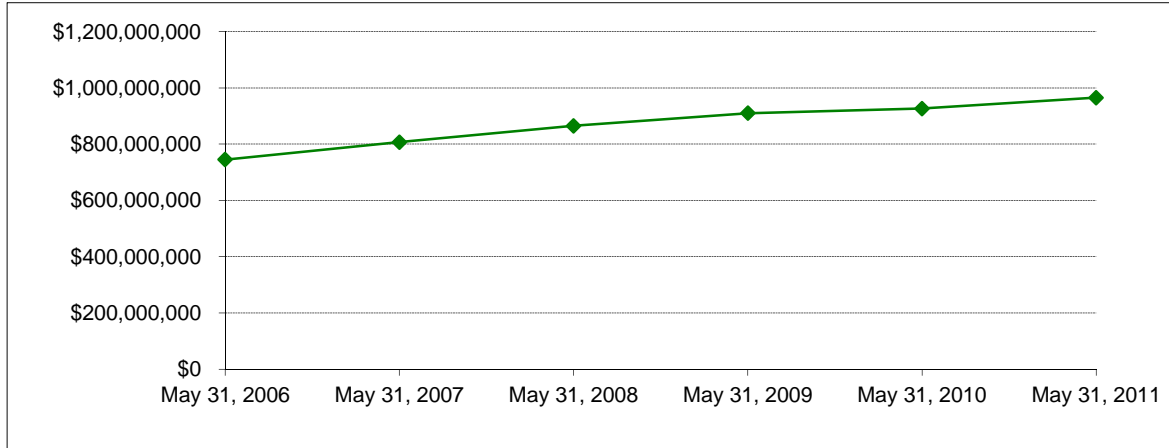
**Endowment Fund Balance - Market Value
May 31, 2006 through May 31, 2011**

	May 31, 2006	May 31, 2007	May 31, 2008	May 31, 2009	May 31, 2010	May 31, 2011
Permanent Endowment	\$725,266,000	\$849,855,000	\$894,844,000	\$733,005,000	\$724,217,000	\$834,769,000
Board Designated Endowment	144,902,000	164,189,000	174,090,000	147,251,000	147,749,000	169,160,000
Total Endowment	\$870,168,000	\$1,014,044,000	\$1,068,934,000	\$880,256,000	\$871,966,000	\$1,003,929,000
Permanent Endowment	83.3%	83.8%	83.7%	83.3%	83.1%	83.2%
Board Designated Endowment	16.7%	16.2%	16.3%	16.7%	16.9%	16.8%
Total Endowment	100.0%	100.0%	100.0%	100.0%	100.0%	100.0%



Property, Plant and Equipment*
May 31, 2006 through May 31, 2011

Property, Plant & Equipment	May 31, 2006	May 31, 2007	May 31, 2008	May 31, 2009	May 31, 2010	May 31, 2011
	\$745,063,000	\$806,781,000	\$865,139,000	\$909,995,000	\$926,344,000	\$965,438,000



*Does not reflect the impact of accumulated depreciation.

*The May 31, 2006 figure for Property, Plant & Equipment was changed in 2007 from \$744,986,000 to \$745,063,000.

Assets
May 31, 2006 through May 31, 2011

	May 31, 2006	May 31, 2007	May 31, 2008	May 31, 2009	May 31, 2010	May 31, 2011
Net Assets	\$1,230,176,000	\$1,408,848,000	\$1,439,335,000	\$1,241,695,000	\$1,236,166,000	\$1,375,189,000
Total Assets	\$1,638,403,000	\$1,831,511,000	\$1,863,687,000	\$1,715,749,000	\$1,687,954,000	\$1,867,116,000

