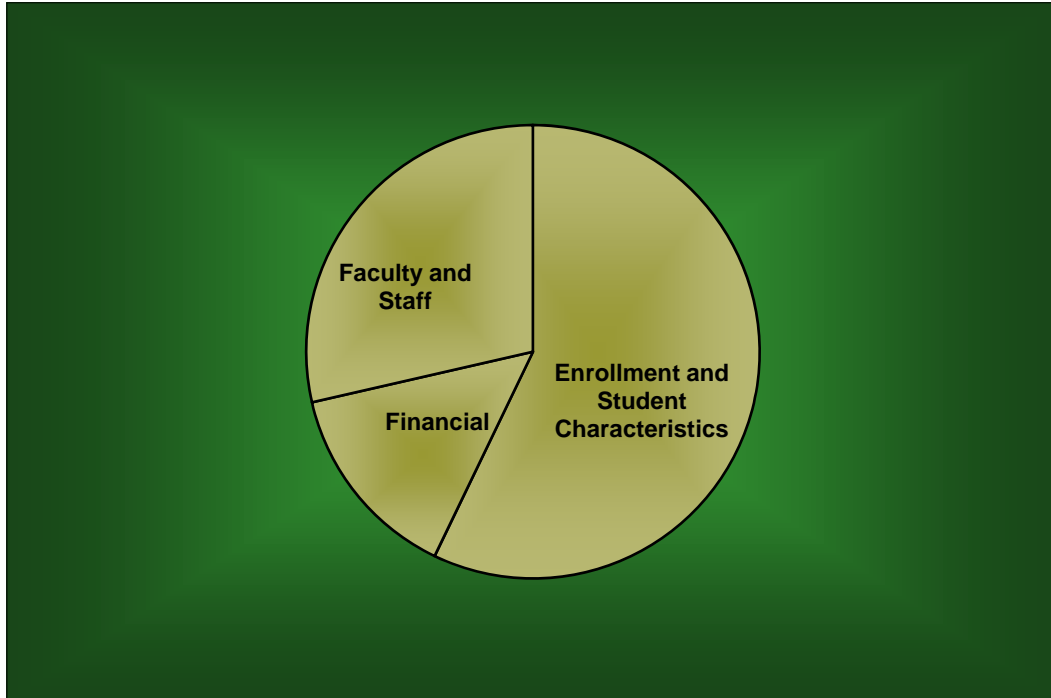


# **BAYLOR TRENDS**

---



**Fall 2004 - Fall 2010**

---

**Volume XXII**

---

Prepared by the Office of Institutional Research and Testing, Fall 2010

<http://www.baylor.edu/irt/>

# Table of Contents

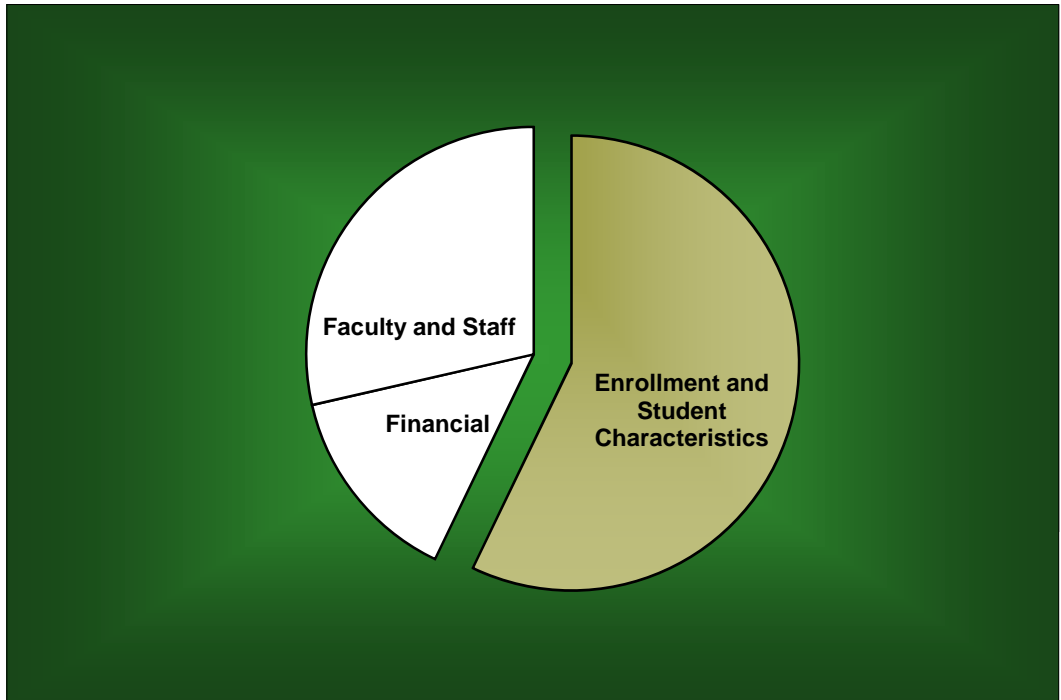
---

	Page
<b>ENROLLMENT AND STUDENT CHARACTERISTICS</b>	
<i>New Freshman Applications, Acceptances and Enrollment</i> .....	1
<i>Transfer Applications, Acceptances and Enrollment</i> .....	1
<i>New Freshman Applications and Enrollment by Gender</i> .....	2
<i>New Freshman and Transfer Student Enrollment</i> .....	3
<i>Headcount Enrollment by Classification</i> .....	4
<i>Enrollment</i> .....	5
<i>Enrollment by Gender, Excluding Military Programs</i> .....	6
<i>Enrollment by Religious Affiliation, Excluding Military Programs</i> .....	7
<i>Baptist Percentage, Excluding Military Programs</i> .....	7
<i>Enrollment by Racial/Ethnic Group</i> .....	8
<i>Racial/Ethnic Minority Percentage</i> .....	8
<i>Enrollment by Race and Gender</i> .....	9
<i>Program Enrollment by Unit, Level, and Race</i> .....	10
<i>Program Enrollment by Unit, Level, and Gender</i> .....	16
<i>National Merit Scholars</i> .....	19
<i>Average SAT Scores for First-Time Freshmen</i> .....	20
<i>Average ACT Scores for First-Time Freshmen</i> .....	20
<i>Leading Texas Counties of Origin</i> .....	21
<i>Leading States of Origin</i> .....	21
<i>Percentage from Top Four Texas Counties</i> .....	22
<i>Students from Texas by County</i> .....	22
<i>Texas Enrollment by County</i> .....	23
<i>Enrollment by State</i> .....	24
<i>Enrollment by State – Map</i> .....	25
<i>Countries Represented by Nonresident Aliens</i> .....	26
<i>Headcount Enrollment by Unit</i> .....	27
<i>Program Enrollment by Unit</i> .....	27
<i>Headcount Enrollment Percentage by Unit</i> .....	28
<i>Student Credit Hours by Unit, Excluding Military Programs</i> .....	29
<i>Retention of First-Time Freshman Classes</i> .....	30
<i>Distribution of Degrees</i> .....	31
<i>Summary of Degrees Awarded</i> .....	32
<i>Degree Programs</i> .....	33
<i>Profile of First-Time Freshmen</i> .....	35
<i>Profile of Undergraduate Transfers</i> .....	36
<i>Profile of Undergraduate Students</i> .....	37
<i>Profile of Students in the Graduate School</i> .....	38
<i>Profile of Students in the School of Social Work</i> .....	39
<i>Profile of Law Students</i> .....	40
<i>Profile of Seminary Students</i> .....	41

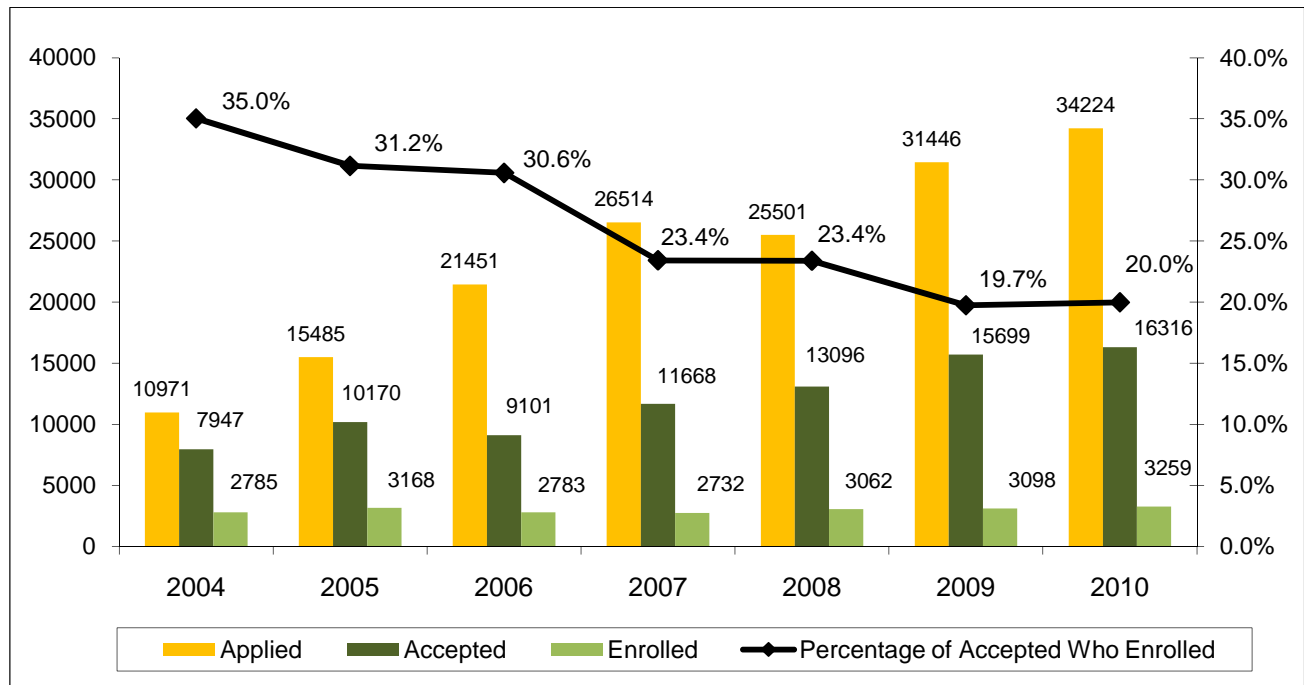
	Page
<b>FACULTY AND STAFF</b>	
<i>Full-Time Faculty Positions</i> .....	42
<i>Highest Degree Earned by Full-Time Faculty</i> .....	42
<i>Percentage of Full-Time Faculty with Tenure</i> .....	43
<i>Average Salaries of Full-Time Instructional Faculty on Academic Year Contracts</i> .....	44
<i>Average Compensation of Full-Time Instructional Faculty on Academic Year Contracts</i> .....	45
<i>Institutional Staff</i> .....	46
<i>Percentage of Institutional Staff</i> .....	46
<i>Full-Time Faculty by Religious Affiliation</i> .....	47
<i>Full-Time Staff by Religious Affiliation</i> .....	47
 <b>FINANCIAL</b>	
<i>Undergraduate Tuition and Other Semester Charges</i> .....	48
<i>Undergraduate Tuition, Room and Board Charges</i> .....	49
<i>Annual Undergraduate Student Cost Profile</i> .....	50
<i>Operating Funds:</i>	
<i>Sources of Revenues</i> .....	51
<i>Sources of Revenue as a Percentage of Total Revenues</i> .....	51
<i>Expenditures by Functions</i> .....	52
<i>Expenditures by Functions as a Percentage of Total Expenditures</i> .....	52
<i>Endowment Fund Balance - Market Value</i> .....	53
<i>Property, Plant and Equipment</i> .....	54
<i>Assets</i> .....	54

## ***Enrollment and Student Characteristics***

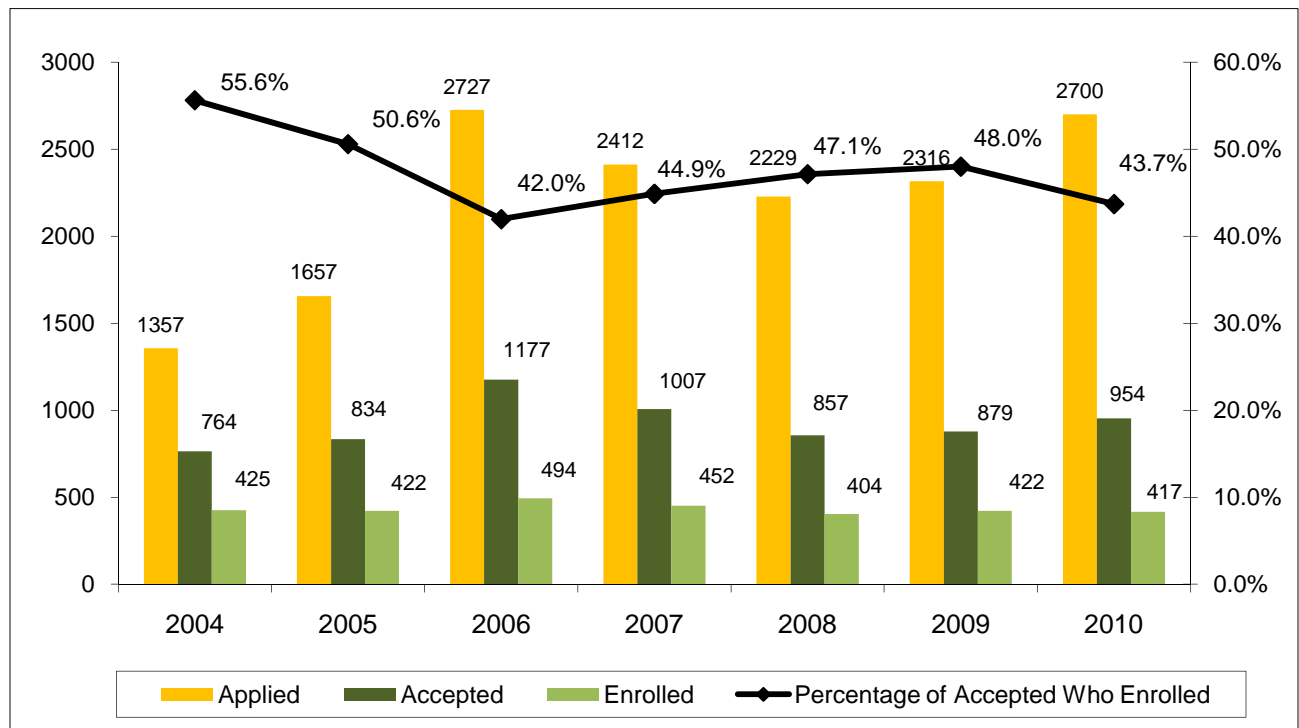
---



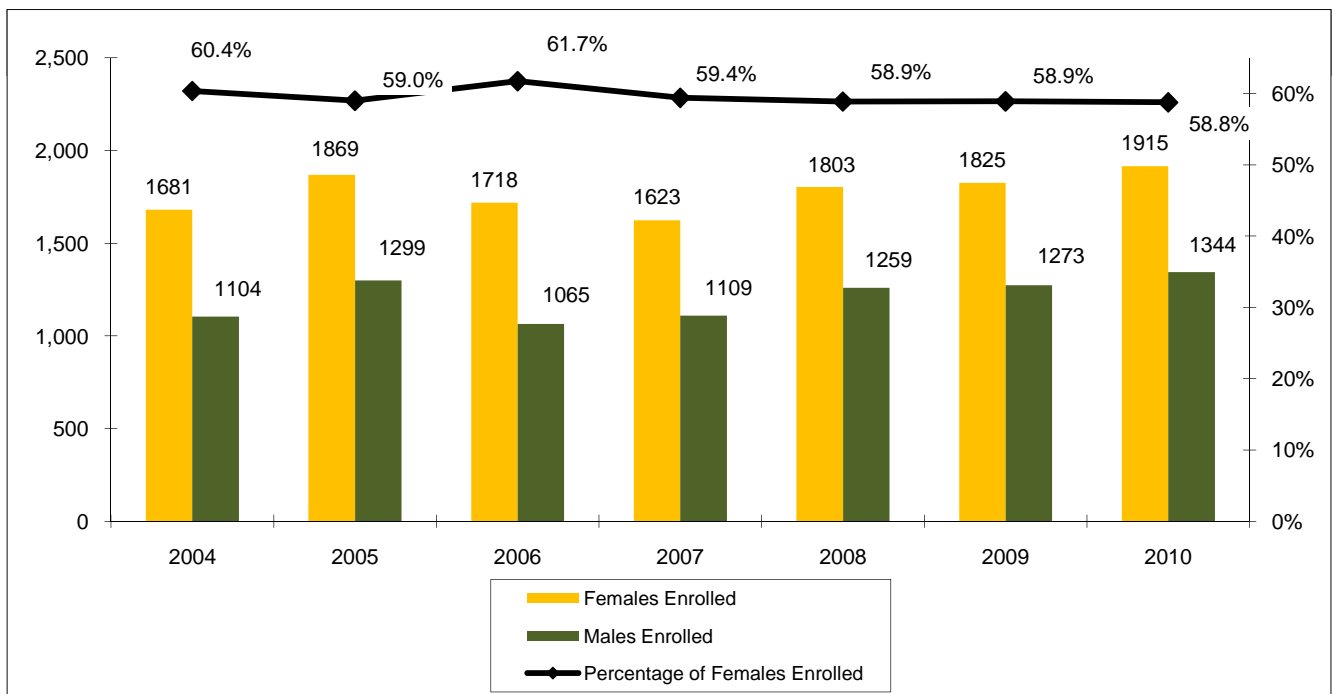
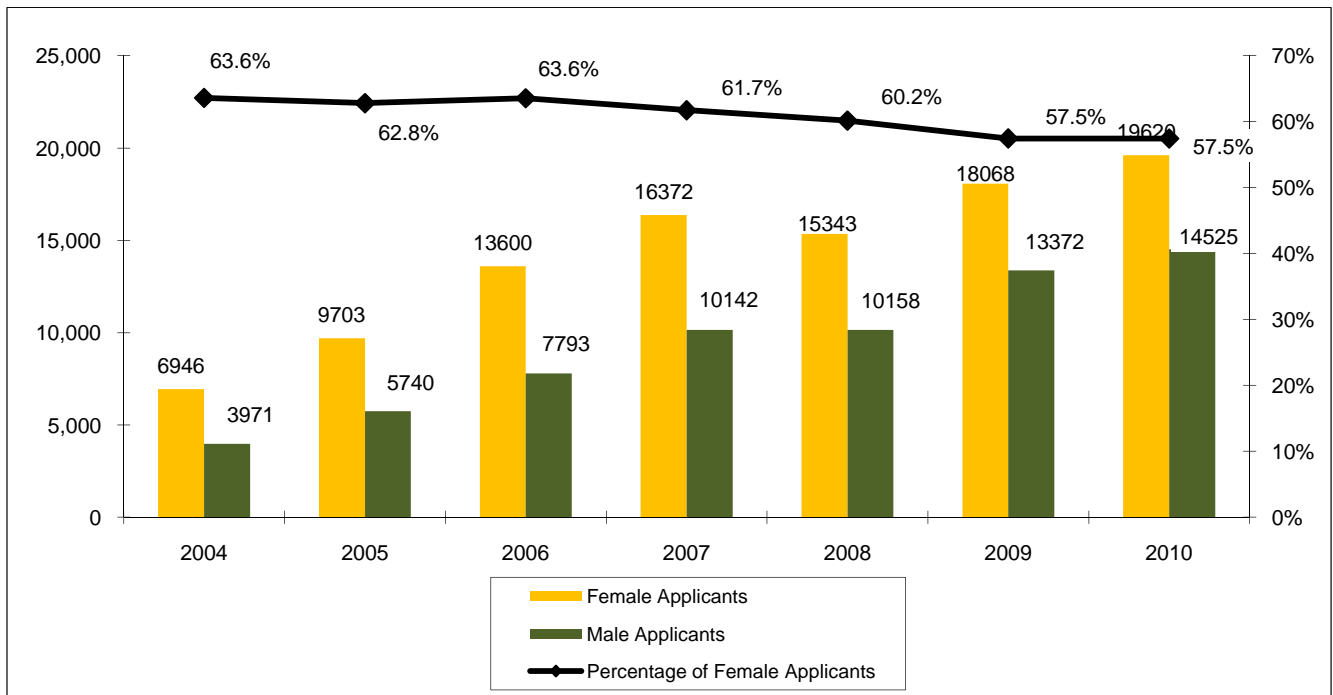
**New Freshman Applications, Acceptances and Enrollment  
Fall 2004 - Fall 2010**



**Transfer Applications, Acceptances and Enrollment  
Fall 2004 - Fall 2010**

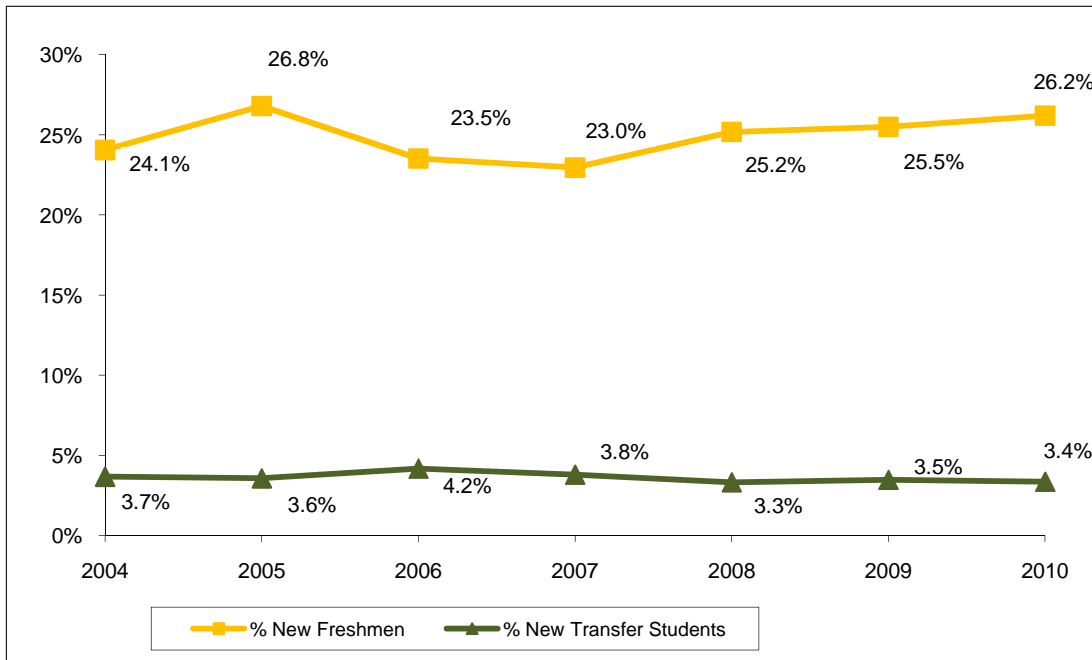


New Freshman Applications and Enrollment by Gender\*  
Fall 2004 - Fall 2010



\*Totals of male and female applicants may not equal the total applicants displayed on the previous page, because there are some applicants who do not provide their gender.

**New Freshman and Transfer Student Enrollment  
Fall 2004 - Fall 2010**



	Fall	2004	2005	2006	2007	2008	2009	2010
<b>New Freshmen</b>		2,785	3,168	2,783	2,732	3,062	3,098	3,259
<b>New Transfer Students</b>		425	422	494	452	404	422	417
<b>Undergraduate Enrollment</b>		11,580	11,825	11,831	11,902	12,162	12,149	12,438
<b>% New Freshmen</b>		24.1%	26.8%	23.5%	23.0%	25.2%	25.5%	26.2%
<b>% New Transfer Students</b>		3.7%	3.6%	4.2%	3.8%	3.3%	3.5%	3.4%

Notes:

1. Freshmen who enter the University in the fall or preceding summer term are counted as "new freshmen." Similarly, transfer students entering in the fall or preceding summer term are counted as "transfer students" for the fall semester.

2. "Transfer students" refers to the entering summer/fall group of transfer students. For example, in Fall 2010 the 417 entering transfer students comprised 3.4% of the 12,438 undergraduates. However, for Fall 2010 the total number of enrolled undergraduates who had transferred into the University consisted of (a) transfers who entered in Fall 2010 and (b) students who transferred into the University in previous academic years. Generally, the total enrollment of students who had entered as transfer students is approximately 15% of the undergraduate student body.

**Headcount Enrollment by Classification  
Fall 2004 - Fall 2010**

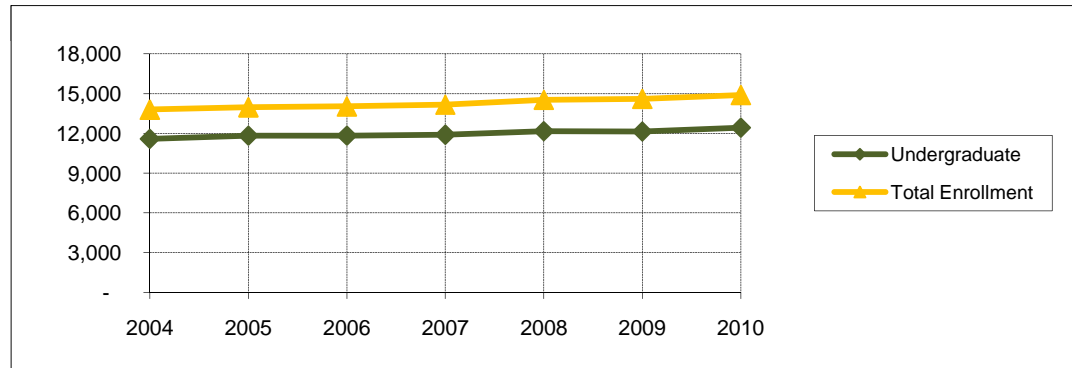
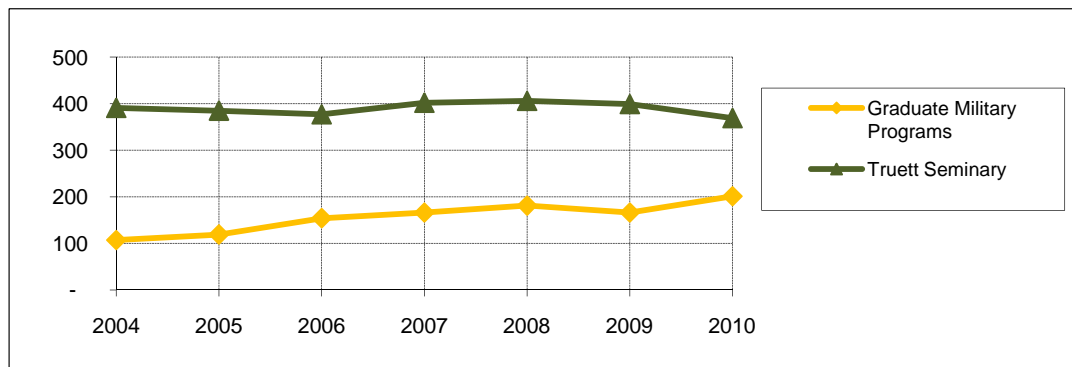
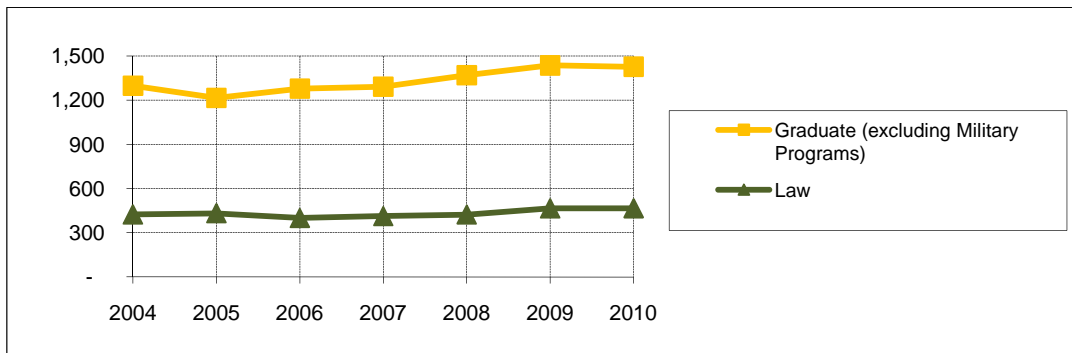
Fall	2004	2005	2006	2007	2008	2009	2010
<b>Freshman</b>	3,430	3,791	3,524	3,315	3,522	3,616	3,811
<b>Sophomore</b>	2,391	2,529	2,833	2,683	2,557	2,623	2,602
<b>Junior</b>	2,425	2,295	2,481	2,652	2,604	2,464	2,602
<b>Senior</b>	3,223	3,080	2,896	3,159	3,383	3,338	3,269
<b>Special</b>	-	-	-	-	-	-	-
<b>Postbaccalaureate</b>	79	84	69	61	68	81	125
<b>Nondegree</b>	32	46	28	32	28	27	29
<b>TOTAL UNDERGRADUATE</b>	11,580	11,825	11,831	11,902	12,162	12,149	12,438
<b>Master's</b>	834	720	778	783	833	862	828
<b>Doctoral</b>	445	473	473	483	502	541	561
<b>Graduate Transient/Nondegree</b>	7	10	9	9	13	9	13
<b>Graduate Professional</b>	11	11	18	16	21	23	24
<b>TOTAL "WACO" GRADUATE</b>	1,297	1,214	1,278	1,291	1,369	1,435	1,426
<b>Seminary Master's</b>	345	344	334	365	367	364	330
<b>Seminary Doctoral</b>	43	39	42	36	38	35	39
<b>Nondegree</b>	3	2	1	1	1	-	-
<b>TOTAL SEMINARY</b>	391	385	377	402	406	399	369
<b>School of Law</b>	424	432	400	413	423	465	466
<b>Graduate Military Programs</b>	107	119	154	166	181	166	201
<b>TOTAL ENROLLMENT</b>	13,799	13,975	14,040	14,174	14,541	14,614	14,900

## Notes:

1. Headcount counts a student once in their primary program.

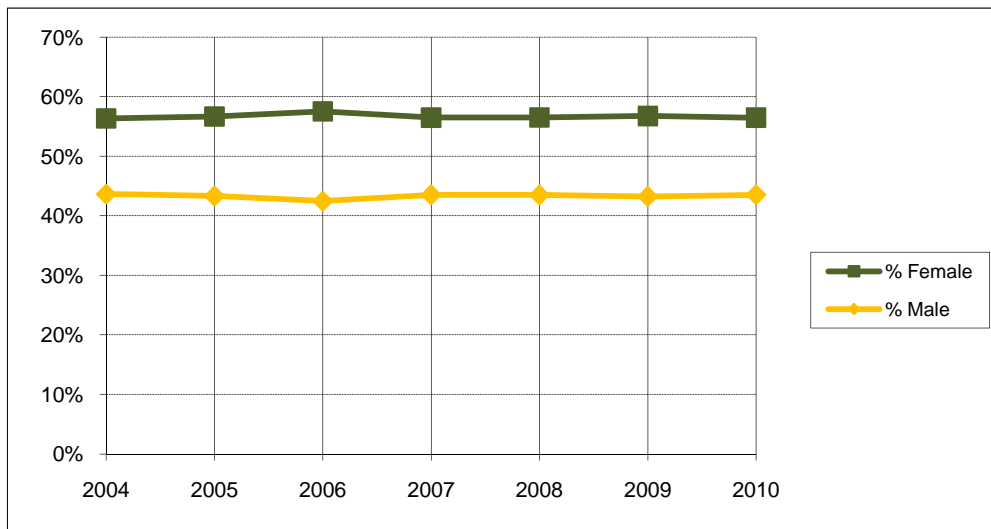


Enrollment  
Fall 2004 - Fall 2010



	Fall	2004	2005	2006	2007	2008	2009	2010
<b>Undergraduate</b>		11,580	11,825	11,831	11,902	12,162	12,149	12,438
<b>Graduate (excluding Military Programs)</b>		1,297	1,214	1,278	1,291	1,369	1,435	1,426
<b>Law</b>		424	432	400	413	423	465	466
<b>Truett Seminary</b>		391	385	377	402	406	399	369
<b>SUBTOTAL</b>		13,692	13,856	13,886	14,008	14,360	14,448	14,699
<b>Graduate Military Programs</b>		107	119	154	166	181	166	201
<b>TOTAL ENROLLMENT</b>		13,799	13,975	14,040	14,174	14,541	14,614	14,900

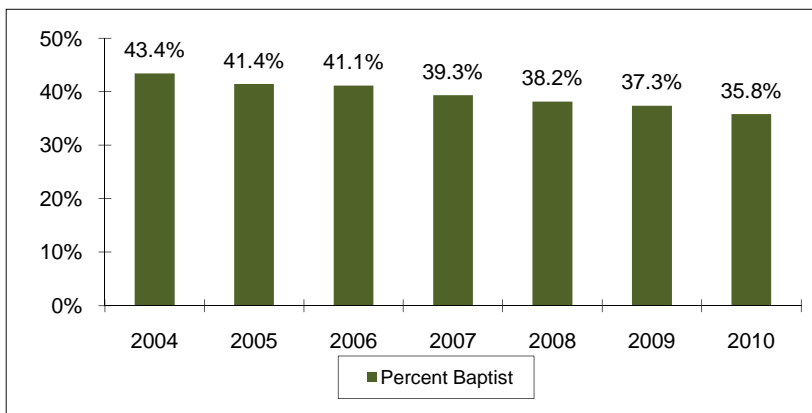
**Enrollment by Gender  
(Excluding Military Programs)  
Fall 2004 - Fall 2010**



	Fall	2004	2005	2006	2007	2008	2009	2010
<b>Female</b>		7,717	7,854	7,990	7,912	8,113	8,199	8,301
<b>Male</b>		5,975	6,002	5,896	6,096	6,247	6,249	6,398
<b>Total (excluding Military Programs)</b>		13,692	13,856	13,886	14,008	14,360	14,448	14,699
<b>% Female</b>		56.4%	56.7%	57.5%	56.5%	56.5%	56.7%	56.5%
<b>% Male</b>		43.6%	43.3%	42.5%	43.5%	43.5%	43.3%	43.5%

**Enrollment by Religious Affiliation (Excluding Military Programs)  
Fall 2004 - Fall 2010**

Fall	2004	2005	2006	2007	2008	2009	2010
African Methodist Episcopal	4	7	5	5	7	5	8
Anglican - Church of England	7	11	9	7	14	15	21
Assembly of God	136	130	129	131	129	144	158
Atheist	14	16	22	20	33	35	43
Baptist	5941	5738	5710	5511	5482	5396	5262
Buddhist	77	76	79	76	80	82	84
Catholic	1765	1833	1788	1805	1923	1994	2101
Christian Church	59	84	86	123	149	167	296
Christian Scientist	16	15	15	9	8	6	5
Church of Christ	269	257	259	253	241	270	268
Church of God	29	27	29	31	28	28	21
Church of the Nazarene	37	28	34	35	38	35	29
Congregational Church	19	17	14	10	6	7	9
Disciples of Christ (Christian)	80	86	91	101	107	109	100
Dutch Reformed	-	2	4	4	5	5	4
Eastern Orthodox	32	35	37	43	50	47	54
Episcopalian	251	256	262	253	279	274	253
Evangelical Free Church	12	25	36	43	51	42	86
Four Square Gospel	11	12	10	15	11	13	14
Full Gospel	2	4	3	3	2	3	7
Greek Orthodox	6	7	5	6	4	6	6
Hindu	105	115	103	101	113	120	125
Independent Bible Church	12	19	21	24	28	29	32
Interdenominational	266	167	98	79	83	72	56
Jehovah's Witness	10	11	8	9	12	13	12
Jewish	9	11	11	10	26	21	21
Judaism	23	21	14	15	-	-	-
Latter Day Saints (Mormon)	36	48	39	26	31	32	35
Lutheran	343	364	371	368	399	398	402
Mennonite	10	10	5	7	6	8	6
Methodist	1133	1099	1074	1095	1168	1182	1148
Missionary Alliance	2	2	5	7	8	10	15
Moslem (Islam, Muslim)	119	117	133	124	131	119	122
Non-Denominational	1054	1444	1703	1911	2080	2110	2090
Pentecostal	100	112	99	110	124	119	126
Presbyterian	549	549	569	571	601	583	603
Protestant	27	54	53	68	81	91	131
Seventh Day Adventist	11	12	11	13	10	14	19
Society of Friends (Quakers)	2	3	2	2	4	6	5
Unitarian	6	4	3	6	10	10	10
United Brethren	-	2	2	1	1	-	-
United Church of Christ	2	6	5	3	4	4	4
Other/Not Specified	1106	1020	930	974	793	824	908
<b>TOTAL RELIGION</b>	<b>13681</b>	<b>13856</b>	<b>13886</b>	<b>14008</b>	<b>14360</b>	<b>14448</b>	<b>14699</b>



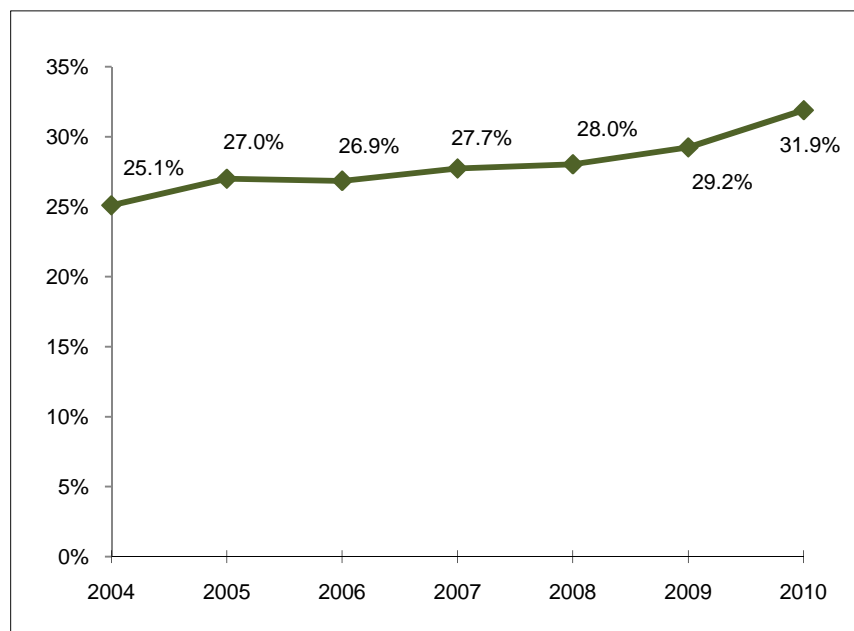
**Enrollment by Racial / Ethnic Group\*  
Fall 2004 - Fall 2010**

	Fall	2004	2005	2006	2007	2008	2009	2010
<b>African American/Black</b>		944	1,048	1,036	1,046	1,077	1,119	1,094
<b>American Indian/Alaskan Native</b>		80	93	88	90	110	108	56
<b>Asian</b>		-	-	-	-	-	-	1,187
<b>Asian/Pacific Islander</b>		977	1,044	1,050	1,127	1,132	1,166	-
<b>Hispanic</b>		1,133	1,284	1,301	1,375	1,464	1,585	1,847
<b>Pacific Islander</b>		-	-	-	-	-	-	15
<b>White</b>		10,318	10,183	10,249	10,221	10,448	10,285	10,064
<b>Multiracial</b>		-	-	-	-	-	-	570
<b>Other</b>		330	304	295	293	294	296	-
<b>Not Specified</b>		17	19	21	22	16	55	67
<b>Total</b>		13,799	13,975	14,040	14,174	14,541	14,614	14,900

\* In 2010, in order to fulfill new federal government reporting requirements on race and ethnicity, students were given the opportunity to select multiple race categories. In addition, Pacific Islander was designated as its own category (separate from Asian). The students were asked two questions. The first question asked the student "Are you Hispanic/Latino?" The second question allowed students to select among five race categories, with multiple responses allowed.

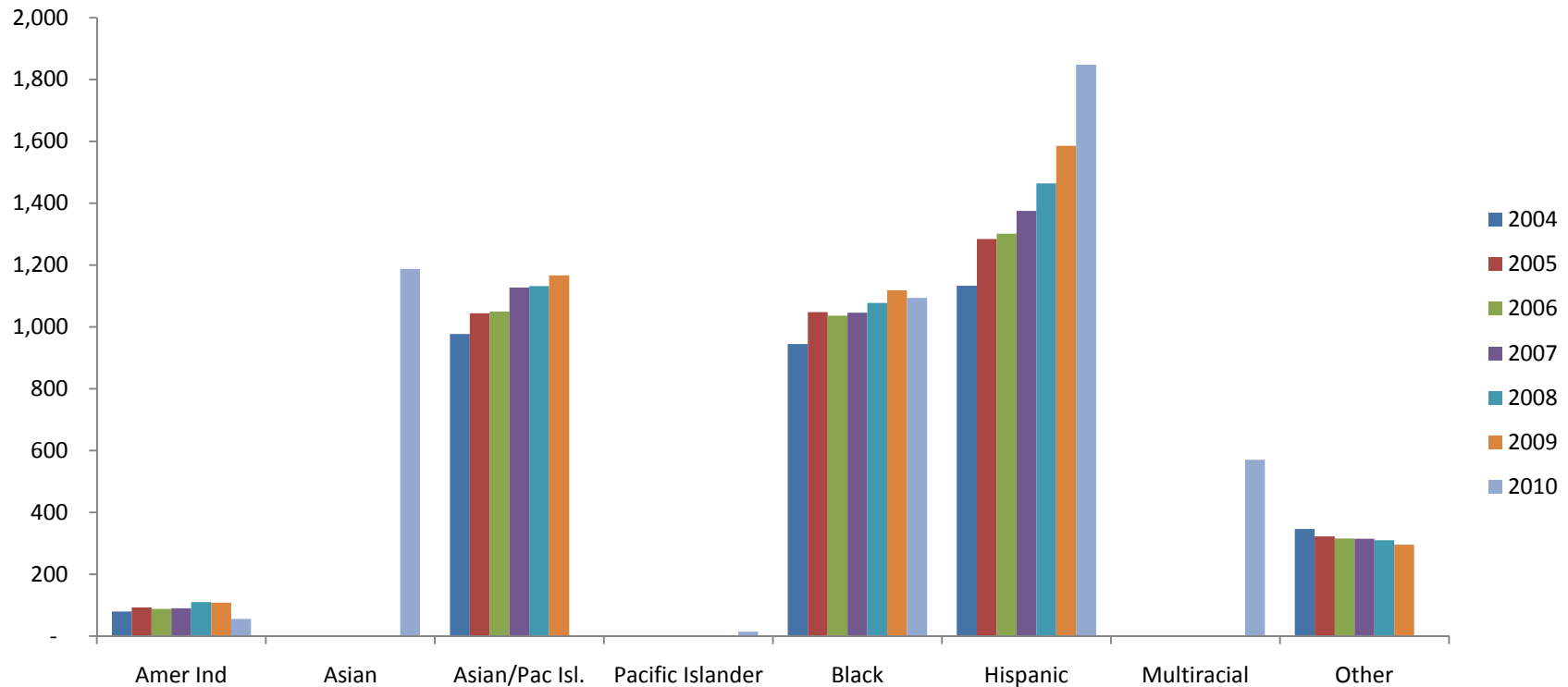
In this table, students are counted in only one race/ethnic group category. If the student indicated "yes" to the first question, the student was categorized as Hispanic (only) regardless of any race code(s) they may have selected. If the student marked more than one race (and "no" to Hispanic/Latino in the first question), he/she was reported in the category of Multiracial.

**Fall 2004 - Fall 2010  
Racial / Ethnic Minority Percentage**



Enrollment by Race and Gender \*  
Fall 2004 - Fall 2010

YEAR	Total			Alaskan Native/ American Indian			Asian			Asian/ Pacific Islander			Pacific Islander			African Amer./ Black			Hispanic			White			Multiracial			Other		
	All	M	F	All	M	F	All	M	F	All	M	F	All	M	F	All	M	F	All	M	F	All	M	F	All	M	F			
	2004	13799	6052	7747	80	38	42	-	-	-	977	466	511	-	-	-	944	352	592	1133	492	641	10318	4547	5771	-	-	-	347	157
2005	13975	6089	7886	93	42	51	-	-	-	1044	492	552	-	-	-	1048	384	664	1284	536	748	10183	4493	5690	-	-	-	323	142	181
2006	14040	5999	8041	88	35	53	-	-	-	1050	480	570	-	-	-	1036	385	651	1301	522	779	10249	4437	5812	-	-	-	316	140	176
2007	14174	6200	7974	90	36	54	-	-	-	1127	513	614	-	-	-	1046	394	652	1375	584	791	10221	4533	5688	-	-	-	315	140	175
2008	14541	6364	8177	110	47	63	-	-	-	1132	509	623	-	-	-	1077	411	666	1464	613	851	10448	4642	5806	-	-	-	310	142	168
2009	14614	6349	8265	108	45	63	-	-	-	1166	550	616	-	-	-	1119	395	724	1585	652	933	10285	4553	5732	-	-	-	296	120	176
2010	14833	6471	8362	56	25	31	1187	559	628	-	-	-	15	6	9	1094	397	697	1847	765	1082	10064	4491	5573	570	228	342	-	-	-



\* Please see note on page 8.

**Program Enrollment by Unit, Level, and Race  
Fall 2004 - Fall 2010**

	2004	2005	2006	2007	2008	2009	2010
<b>College of Arts &amp; Sciences</b>							
UG Total	6,650	6,709	6,503	6,410	6,490	6,448	6,553
African American / Black	575	630	573	533	567	563	553
Alaskan Native / Amer. Indian	37	45	48	46	56	52	27
Asian	-	-	-	-	-	-	617
Asian / Pacific Islander	515	590	587	605	581	612	-
Hispanic	673	742	756	789	813	870	1,018
Pacific Islander	-	-	-	-	-	-	6
White	4,675	4,529	4,388	4,285	4,319	4,182	4,041
Multiracial	-	-	-	-	-	-	291
Other	174	172	151	152	154	149	-
Not Specified	1	1	-	-	-	20	-
GR Total	641	600	637	627	631	647	674
African American / Black	19	11	9	11	10	8	11
Alaskan Native / Amer. Indian	2	4	4	3	6	8	4
Asian	-	-	-	-	-	-	83
Asian / Pacific Islander	59	66	59	70	70	72	-
Hispanic	49	52	49	40	43	34	39
Pacific Islander	-	-	-	-	-	-	-
White	493	453	495	485	489	510	517
Multiracial	-	-	-	-	-	-	20
Other	19	14	20	17	13	13	-
Not Specified	-	-	1	1	-	2	-
<b>School of Business</b>							
UG Total	2,653	2,583	2,647	2,683	2,767	2,670	2,650
African American / Black	120	122	149	168	146	153	136
Alaskan Native / Amer. Indian	18	15	16	18	16	12	6
Asian	-	-	-	-	-	-	181
Asian / Pacific Islander	149	136	146	156	171	148	-
Hispanic	165	196	185	199	215	232	267
Pacific Islander	-	-	-	-	-	-	2
White	2,144	2,076	2,108	2,085	2,169	2,077	1,974
Multiracial	-	-	-	-	-	-	84
Other	57	38	42	55	50	43	-
Not Specified	-	-	1	2	-	5	-
GR Total	295	232	257	279	294	346	324
African American / Black	8	12	17	23	26	24	16
Alaskan Native / Amer. Indian	-	-	-	-	1	2	1
Asian	-	-	-	-	-	-	33
Asian / Pacific Islander	44	43	46	42	39	46	-
Hispanic	29	13	9	21	22	26	25
Pacific Islander	-	-	-	-	-	-	1
White	199	157	169	171	199	234	242
Multiracial	-	-	-	-	-	-	6
Other	12	5	13	12	7	6	-
Not Specified	3	2	3	10	-	8	-

**Program Enrollment by Unit, Level, and Race  
Fall 2004 - Fall 2010**

	2004	2005	2006	2007	2008	2009	2010
<b>School of Engineering &amp; Computer Science</b>							
UG Total	456	516	538	548	654	736	784
African American / Black	38	51	45	43	43	50	50
Alaskan Native / Amer. Indian	2	2	3	3	5	5	-
Asian	-	-	-	-	-	-	51
Asian / Pacific Islander	32	29	26	33	42	46	-
Hispanic	36	47	52	54	79	87	113
Pacific Islander	-	-	-	-	-	-	-
White	344	380	404	408	478	537	544
Multiracial	-	-	-	-	-	-	26
Other	4	7	8	7	7	6	-
Not Specified	-	-	-	-	-	5	-
GR Total	40	40	37	46	46	48	55
African American / Black	1	-	2	1	2	3	4
Alaskan Native / Amer. Indian	1	1	-	1	1	-	-
Asian	-	-	-	-	-	-	16
Asian / Pacific Islander	17	14	7	12	14	17	-
Hispanic	-	1	2	2	5	5	6
Pacific Islander	-	-	-	-	-	-	-
White	18	21	22	27	21	23	26
Multiracial	-	-	-	-	-	-	3
Other	3	3	4	3	3	-	-
Not Specified	-	-	-	-	-	-	-
<b>School of Education</b>							
UG Total	830	923	982	1,056	1,061	1,056	1,099
African American / Black	63	77	96	110	123	130	139
Alaskan Native / Amer. Indian	3	4	3	3	7	6	7
Asian	-	-	-	-	-	-	48
Asian / Pacific Islander	28	29	31	34	42	50	-
Hispanic	51	72	70	80	77	81	105
Pacific Islander	-	-	-	-	-	-	-
White	668	724	770	820	800	773	755
Multiracial	-	-	-	-	-	-	45
Other	17	15	12	9	12	14	-
Not Specified	-	2	-	-	-	2	-
GR Total	292	259	255	217	234	266	232
African American / Black	34	32	28	18	16	22	13
Alaskan Native / Amer. Indian	3	4	5	4	-	-	-
Asian	-	-	-	-	-	-	13
Asian / Pacific Islander	14	11	10	11	9	15	-
Hispanic	10	7	8	10	19	24	15
Pacific Islander	-	-	-	-	-	-	-
White	226	198	199	170	183	199	187
Multiracial	-	-	-	-	-	-	4
Other	5	7	5	4	7	6	-
Not Specified	-	-	-	-	-	-	-

**Program Enrollment by Unit, Level, and Race  
Fall 2004 - Fall 2010**

	2004	2005	2006	2007	2008	2009	2010
<b>Graduate School</b>							
GR Total	7	10	10	9	13	9	13
African American / Black	-	1	1	-	-	-	-
Alaskan Native / Amer. Indian	-	-	-	-	1	-	-
Asian	-	-	-	-	-	-	2
Asian / Pacific Islander	1	1	-	3	4	2	-
Hispanic	-	1	-	-	2	1	1
Pacific Islander	-	-	-	-	-	-	-
White	5	7	8	6	6	6	10
Multiracial	-	-	-	-	-	-	-
Other	1	-	1	-	-	-	-
Not Specified	-	-	-	-	-	-	-
<b>Honors College</b>							
UG Total	173	179	182	206	202	202	201
African American / Black	6	5	4	6	2	2	3
Alaskan Native / Amer. Indian	1	1	-	1	2	3	1
Asian	-	-	-	-	-	-	14
Asian / Pacific Islander	22	27	24	29	20	18	-
Hispanic	7	8	5	6	8	6	11
Pacific Islander	-	-	-	-	-	-	-
White	133	135	143	157	165	166	165
Multiracial	-	-	-	-	-	-	7
Other	4	3	6	7	5	7	-
Not Specified	-	-	-	-	-	-	-
<b>Institutes &amp; Special Studies</b>							
UG Total	74	53	43	43	46	49	54
African American / Black	-	2	1	2	1	4	6
Alaskan Native / Amer. Indian	-	-	-	1	-	1	-
Asian	-	-	-	-	-	-	2
Asian / Pacific Islander	2	4	8	5	3	3	-
Hispanic	5	6	5	4	2	2	5
Pacific Islander	-	-	-	-	-	-	-
White	63	39	28	30	36	36	36
Multiracial	-	-	-	-	-	-	5
Other	4	2	1	1	4	3	-
Not Specified	-	-	-	-	-	-	-
GR Total	55	23	24	30	32	33	36
African American / Black	-	-	-	1	-	1	1
Alaskan Native / Amer. Indian	-	-	-	-	-	-	-
Asian	-	-	-	-	-	-	12
Asian / Pacific Islander	20	14	15	15	14	11	-
Hispanic	3	-	-	1	1	2	3
Pacific Islander	-	-	-	-	-	-	-
White	32	9	9	13	17	18	18
Multiracial	-	-	-	-	-	-	2
Other	-	-	-	-	-	1	-
Not Specified	-	-	-	-	-	-	-



**Program Enrollment by Unit, Level, and Race  
Fall 2004 - Fall 2010**

	2004	2005	2006	2007	2008	2009	2010
<b>School of Law</b>							
LW Total	424	432	400	413	423	465	462
African American / Black	2	5	5	4	5	12	11
Alaskan Native / Amer. Indian	1	5	1	-	1	1	2
Asian	-	-	-	-	-	-	34
Asian / Pacific Islander	20	21	25	22	31	42	-
Hispanic	18	17	16	17	16	35	39
Pacific Islander	-	-	-	-	-	-	2
White	377	375	344	363	363	367	360
Multiracial	-	-	-	-	-	-	14
Other	6	9	9	7	7	7	-
Not Specified	-	-	-	-	-	1	-
<b>School of Music</b>							
UG Total	279	287	304	313	319	320	330
African American / Black	8	10	10	10	14	13	13
Alaskan Native / Amer. Indian	2	1	1	1	2	4	1
Asian	-	-	-	-	-	-	14
Asian / Pacific Islander	5	6	10	17	20	17	-
Hispanic	26	35	35	36	39	42	45
Pacific Islander	-	-	-	-	-	-	-
White	231	229	242	243	238	232	245
Multiracial	-	-	-	-	-	-	12
Other	7	6	6	6	6	12	-
Not Specified	-	-	-	-	-	-	-
GR Total	69	67	64	61	61	61	60
African American / Black	1	3	2	-	-	-	-
Alaskan Native / Amer. Indian	1	1	1	1	1	1	-
Asian	-	-	-	-	-	-	4
Asian / Pacific Islander	4	6	5	4	2	3	-
Hispanic	6	5	8	6	3	5	7
Pacific Islander	-	-	-	-	-	-	-
White	56	51	46	48	52	49	46
Multiracial	-	-	-	-	-	-	3
Other	1	1	2	2	3	3	-
Not Specified	-	-	-	-	-	-	-

**Program Enrollment by Unit, Level, and Race  
Fall 2004 - Fall 2010**

	2004	2005	2006	2007	2008	2009	2010
<b>School of Nursing</b>							
UG Total	465	497	514	507	501	539	582
African American / Black	40	39	34	41	37	52	57
Alaskan Native / Amer. Indian	7	6	4	3	4	5	2
Asian	-	-	-	-	-	-	38
Asian / Pacific Islander	33	42	38	47	44	43	-
Hispanic	31	46	56	58	59	79	87
Pacific Islander	-	-	-	-	-	-	-
White	342	352	371	349	350	349	370
Multiracial	-	-	-	-	-	-	28
Other	11	12	10	8	7	11	-
Not Specified	1	-	1	1	-	-	-
GR Total	39	35	37	39	52	58	73
African American / Black	2	2	1	2	2	4	3
Alaskan Native / Amer. Indian	-	-	-	1	1	1	1
Asian	-	-	-	-	-	-	6
Asian / Pacific Islander	3	4	2	3	5	4	-
Hispanic	-	2	4	5	4	4	6
Pacific Islander	-	-	-	-	-	-	-
White	34	27	30	27	39	45	54
Multiracial	-	-	-	-	-	-	3
Other	-	-	-	-	1	-	-
Not Specified	-	-	-	1	-	-	-
<b>School of Social Work</b>							
UG Total	-	78	118	136	122	129	158
African American / Black	-	12	13	15	17	15	14
Alaskan Native / Amer. Indian	-	1	1	-	1	1	1
Asian	-	-	-	-	-	-	6
Asian / Pacific Islander	-	-	2	6	5	3	-
Hispanic	-	8	8	9	9	11	15
Pacific Islander	-	-	-	-	-	-	-
White	-	56	92	106	89	97	117
Multiracial	-	-	-	-	-	-	5
Other	-	1	2	-	1	1	-
Not Specified	-	-	-	-	-	1	-
SW Total	-	71	85	110	117	122	110
African American / Black	-	5	7	12	11	11	12
Alaskan Native / Amer. Indian	-	-	-	1	1	3	1
Asian	-	-	-	-	-	-	8
Asian / Pacific Islander	-	-	1	4	5	7	-
Hispanic	-	3	7	10	14	12	16
Pacific Islander	-	-	-	-	-	-	-
White	-	60	68	82	83	83	69
Multiracial	-	-	-	-	-	-	4
Other	-	3	2	1	3	6	-
Not Specified	-	-	-	-	-	-	-

**Program Enrollment by Unit, Level, and Race  
Fall 2004 - Fall 2010**

	2004	2005	2006	2007	2008	2009	2010
<b>Truett Seminary</b>							
PR Total	393	387	379	403	407	399	369
African American / Black	27	29	35	42	52	51	49
Alaskan Native / Amer. Indian	2	2	1	2	2	3	1
Asian	-	-	-	-	-	-	10
Asian / Pacific Islander	7	5	8	11	7	11	-
Hispanic	27	25	31	30	32	27	26
Pacific Islander	-	-	-	-	-	-	1
White	322	323	301	315	311	298	270
Multiracial	-	-	-	-	-	-	12
Other	8	3	2	3	3	9	-
Not Specified	-	-	1	-	-	-	-
<b>Graduate Military Programs</b>							
GR Total	107	119	154	166	181	166	175
African American / Black	3	3	7	9	8	9	8
Alaskan Native / Amer. Indian	1	1	-	1	2	1	1
Asian	-	-	-	-	-	-	6
Asian / Pacific Islander	8	6	5	7	9	9	-
Hispanic	3	4	5	9	12	8	8
Pacific Islander	-	-	-	-	-	-	4
White	78	86	116	122	133	125	147
Multiracial	-	-	-	-	-	-	1
Other	2	5	4	2	1	-	-
Not Specified	12	14	17	16	16	14	-

**Program Enrollment by Unit, Level, and Gender  
Fall 2004 - Fall 2010**

		2004	2005	2006	2007	2008	2009	2010
<b>College of Arts &amp; Sciences</b>								
UG	Total	6,650	6,709	6,503	6,410	6,490	6,448	6,566
	Male	2,321	2,373	2,230	2,254	2,273	2,263	2,358
	Female	4,329	4,336	4,273	4,156	4,217	4,185	4,208
GR	Total	641	600	637	627	631	647	680
	Male	305	304	316	313	308	340	342
	Female	336	296	321	314	323	307	338
<b>School of Business</b>								
UG	Total	2,653	2,583	2,647	2,683	2,767	2,670	2,654
	Male	1,613	1,582	1,578	1,665	1,704	1,609	1,628
	Female	1,040	1,001	1,069	1,018	1,063	1,061	1,026
GR	Total	295	232	257	279	294	346	332
	Male	203	152	174	193	191	230	222
	Female	92	80	83	86	103	116	110
<b>School of Engineering &amp; Computer Science</b>								
UG	Total	456	516	538	548	654	736	786
	Male	389	435	455	463	536	598	622
	Female	67	81	83	85	118	138	164
GR	Total	40	40	37	46	46	48	55
	Male	36	34	28	37	38	41	47
	Female	4	6	9	9	8	7	8
<b>School of Education</b>								
UG	Total	830	923	982	1,056	1,061	1,056	1,103
	Male	213	225	239	249	255	253	294
	Female	617	698	743	807	806	803	809
GR	Total	292	259	255	217	234	266	232
	Male	117	102	87	78	84	90	84
	Female	175	157	168	139	150	176	148
<b>Graduate School</b>								
GR	Total	7	10	10	9	13	9	13
	Male	2	6	3	3	6	0	3
	Female	5	4	7	6	7	9	10
<b>Honors College</b>								
UG	Total	173	179	182	206	202	202	202
	Male	79	84	84	94	93	92	91
	Female	94	95	98	112	109	110	111

**Program Enrollment by Unit, Level, and Gender  
Fall 2003 - Fall 2009**

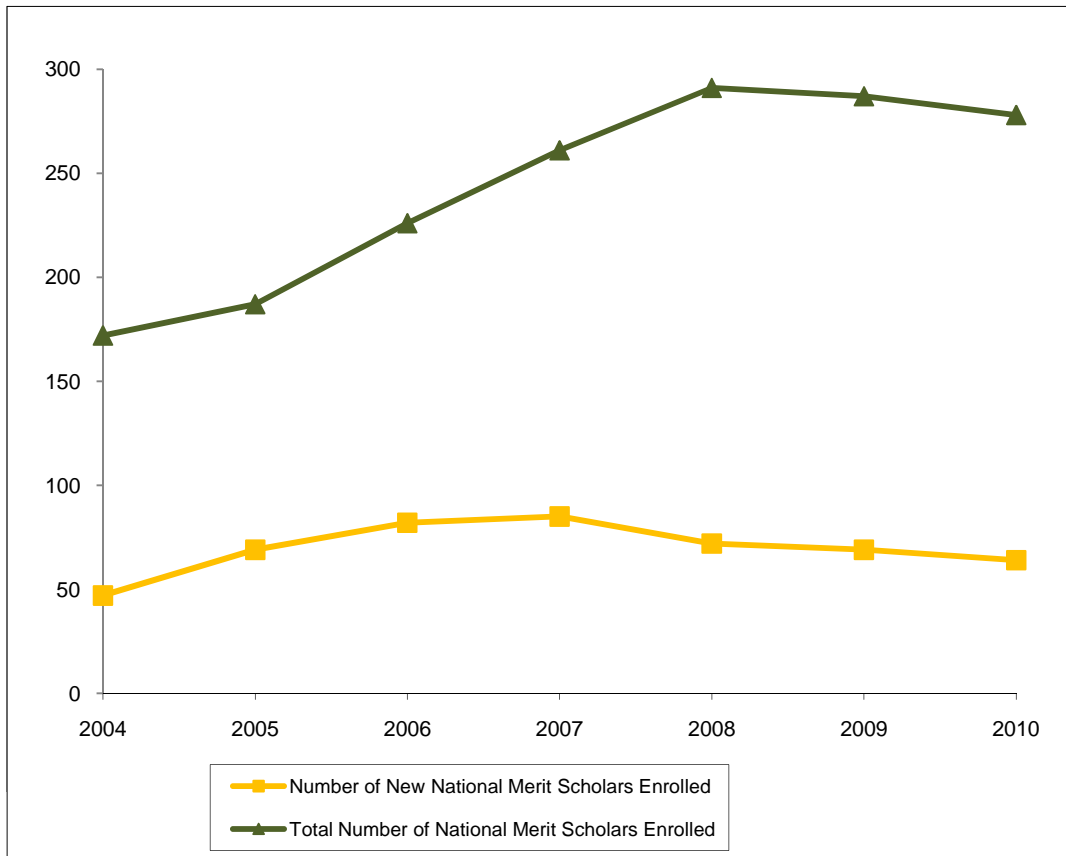
		2004	2005	2006	2007	2008	2009	2010
<b>Institutes &amp; Special Studies</b>								
UG	Total	74	53	43	43	46	49	54
	Male	48	38	29	26	28	31	31
	Female	26	15	14	17	18	18	23
GR	Total	55	23	24	30	32	33	36
	Male	30	15	15	17	15	15	16
	Female	25	8	9	13	17	18	20
<b>School of Law</b>								
LW	Total	424	432	400	413	423	465	466
	Male	226	236	227	250	239	246	234
	Female	198	196	173	163	184	219	232
<b>School of Music</b>								
UG	Total	279	287	304	313	319	320	332
	Male	132	139	147	148	153	145	167
	Female	147	148	157	165	166	175	165
GR	Total	69	67	64	61	61	61	60
	Male	35	33	35	37	37	34	25
	Female	34	34	29	24	24	27	35
<b>School of Nursing</b>								
UG	Total	465	497	514	507	501	539	583
	Male	28	28	31	35	30	36	48
	Female	437	469	483	472	471	503	535
GR	Total	39	35	37	39	52	58	73
	Male	5	3	1	0	1	2	4
	Female	34	32	36	39	51	56	69
<b>School of Social Work</b>								
UG	Total		78	118	136	122	129	158
	Male		5	7	9	13	14	11
	Female		73	111	127	109	115	147
SW	Total		71	85	110	117	122	110
	Male		8	12	15	17	22	15
	Female		63	73	95	100	100	95
<b>Truett Seminary</b>								
PR	Total	393	387	379	403	407	399	369
	Male	260	262	267	284	282	259	234
	Female	133	125	112	119	125	140	135

**Program Enrollment by Unit, Level, and Gender  
Fall 2003 - Fall 2009**

---

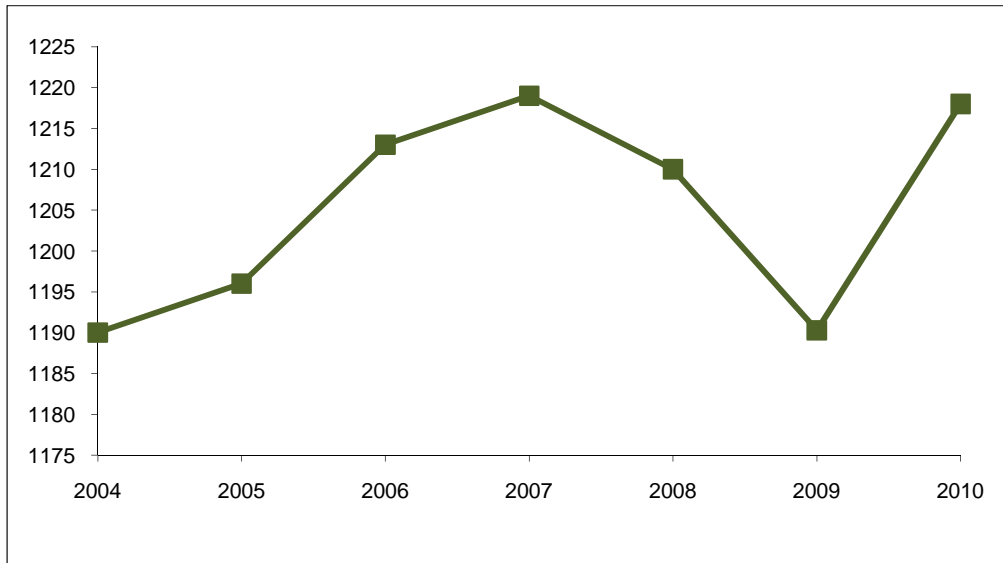
		2004	2005	2006	2007	2008	2009	2010
<b>Graduate Military Programs</b>								
GR	Total	107	119	154	166	181	166	201
	Male	77	87	103	104	117	100	114
	Female	30	32	51	62	64	66	87

**National Merit Scholars  
Fall 2004 - Fall 2010**



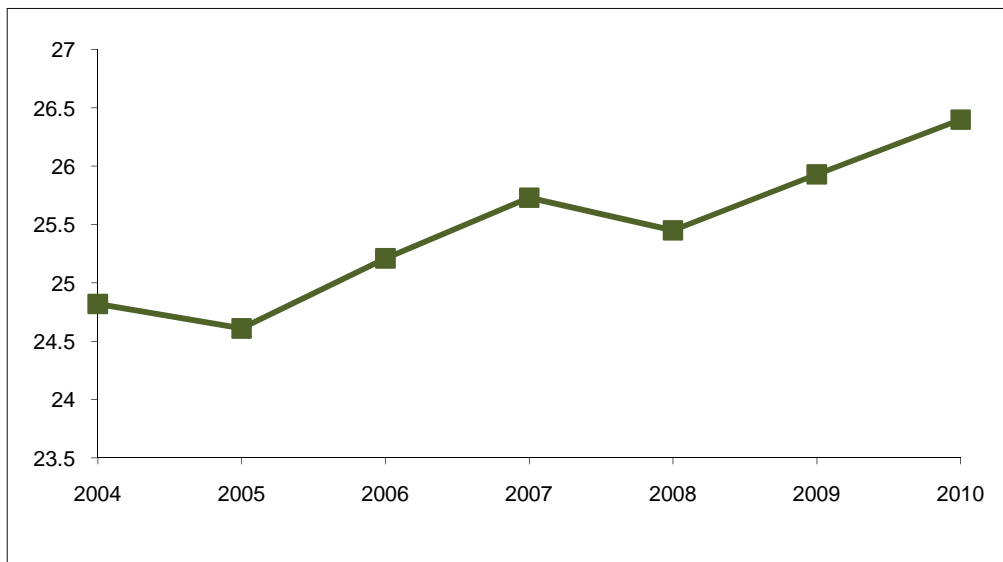
	Fall	2004	2005	2006	2007	2008	2009	2010
<b>Number of New National Merit Scholars Enrolled</b>		47	69	82	85	72	69	64
<b>Total Number of National Merit Scholars Enrolled</b>		172	187	226	261	291	287	278

**Average SAT Scores for First-Time Freshmen  
Fall 2004 - Fall 2010**



	Fall	2004	2005	2006	2007	2008	2009	2010
<b>Average SAT</b>		1190	1196	1213	1219	1210	1190	1218
<b>Number of Students</b>		1,931	2,284	1,860	1,801	2,015	1,808	1,787

**Average ACT Scores for First-Time Freshmen  
Fall 2004 - Fall 2010**



	Fall	2004	2005	2006	2007	2008	2009	2010
<b>Average ACT</b>		24.8	24.6	25.2	25.7	25.5	25.9	26.4
<b>Number of Students</b>		853	884	923	931	1,046	1,290	1,472

Notes:

1. In these tables, the highest SAT score is compared to the highest ACT score, and only the better score is retained.



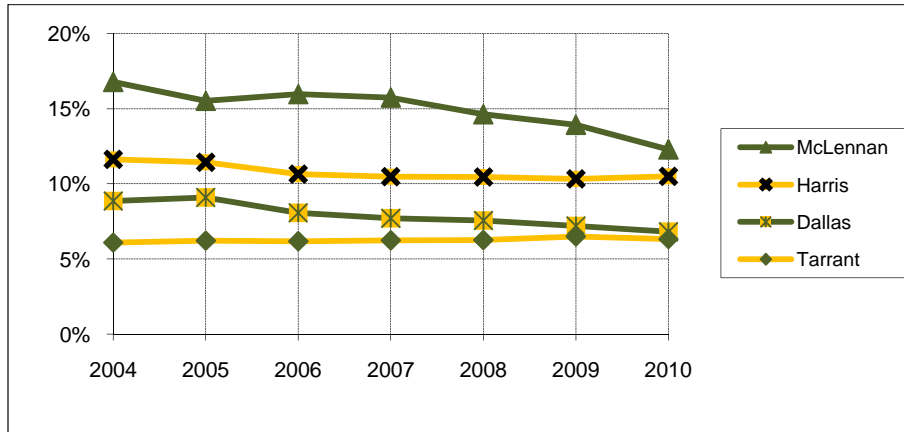
**Leading Texas Counties of Origin  
Fall 2004 - Fall 2010**

Fall	2004	2005	2006	2007	2008	2009	2010
McLennan	2,315	2,169	2,242	2,232	2,128	2,036	1,832
Harris	1,605	1,599	1,494	1,486	1,521	1,510	1,564
Dallas	1,222	1,271	1,134	1,093	1,100	1,052	1,014
Tarrant	840	868	867	884	910	948	941
Collin	457	481	582	601	631	626	617
Bexar	464	486	507	507	521	533	608
Fort Bend	318	332	358	379	416	421	447
Travis	385	405	410	404	420	432	427
Denton	180	196	270	298	340	386	400
Montgomery	263	298	283	290	324	299	330
Williamson	197	201	220	221	268	285	320
Bell	199	215	210	194	200	216	201
Galveston	109	108	109	105	114	120	124
El Paso	95	100	109	120	116	112	121
Brazoria	99	97	100	105	101	109	112
Ellis	61	68	69	90	109	114	106
Smith	146	151	150	122	109	97	100
Gregg	111	106	97	94	108	97	94
Nueces	71	89	71	74	92	80	87
Jefferson	87	88	81	70	69	74	84
Hidalgo	90	96	88	99	96	102	83
Rockwall	74	84	69	76	79	80	83
Johnson	65	68	64	69	70	79	73

**Leading States of Origin  
Fall 2004 - Fall 2010**

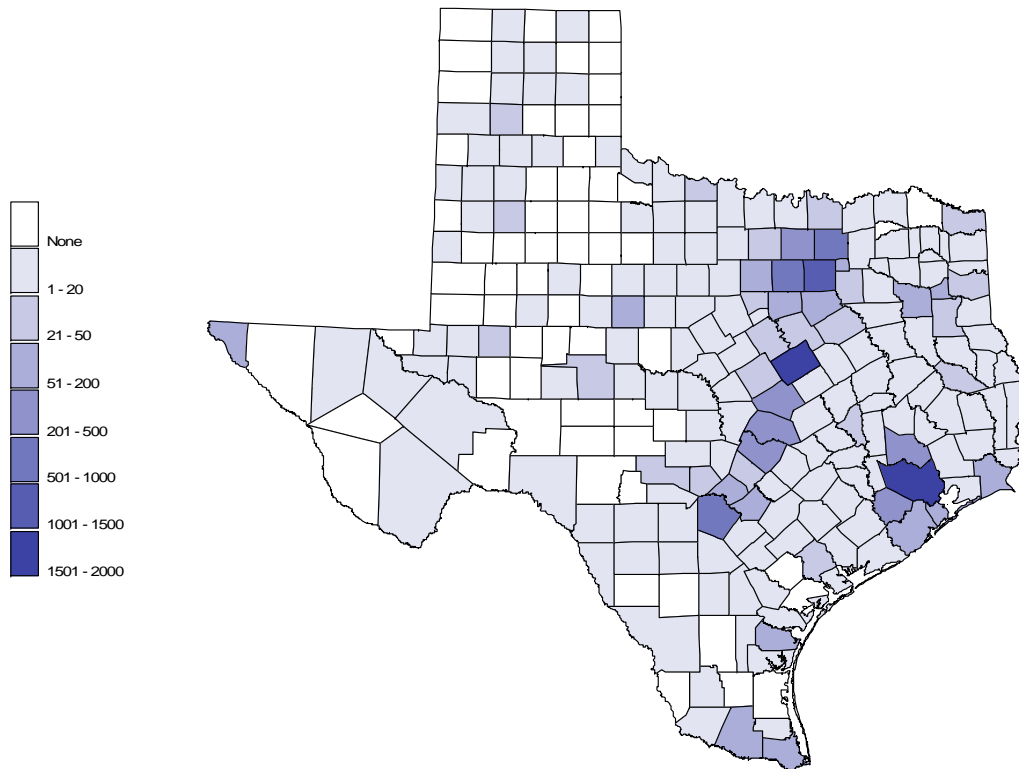
Fall	2004	2005	2006	2007	2008	2009	2010
Texas	11,233	11,349	11,316	11,355	11,616	11,647	11,652
California	255	252	269	268	278	296	332
Colorado	132	145	143	179	199	201	230
Oklahoma	184	177	170	175	195	193	199
Illinois	97	105	117	125	167	155	180
Louisiana	136	145	152	176	169	168	155
Missouri	101	100	97	105	119	127	139
Kansas	84	91	93	99	100	98	111
Tennessee	65	66	80	88	89	103	109
Arkansas	122	105	99	104	110	109	106
Georgia	58	63	73	61	73	78	81
Florida	80	88	97	86	86	80	78
Washington	31	36	31	35	49	45	73
Virginia	37	44	55	63	59	56	67
Arizona	62	81	79	78	75	72	63

Percentage From Top Four Texas Counties  
Fall 2004 - Fall 2010



Fall	2004	2005	2006	2007	2008	2009	2010
<b>McLennan</b>	16.8%	15.5%	16.0%	15.7%	14.6%	13.9%	12.3%
<b>Harris</b>	11.6%	11.4%	10.6%	10.5%	10.5%	10.3%	10.5%
<b>Dallas</b>	8.9%	9.1%	8.1%	7.7%	7.6%	7.2%	6.8%
<b>Tarrant</b>	6.1%	6.2%	6.2%	6.2%	6.3%	6.5%	6.3%

Students From Texas by County  
Fall 2010



**Texas Enrollment by County  
Fall 2010**

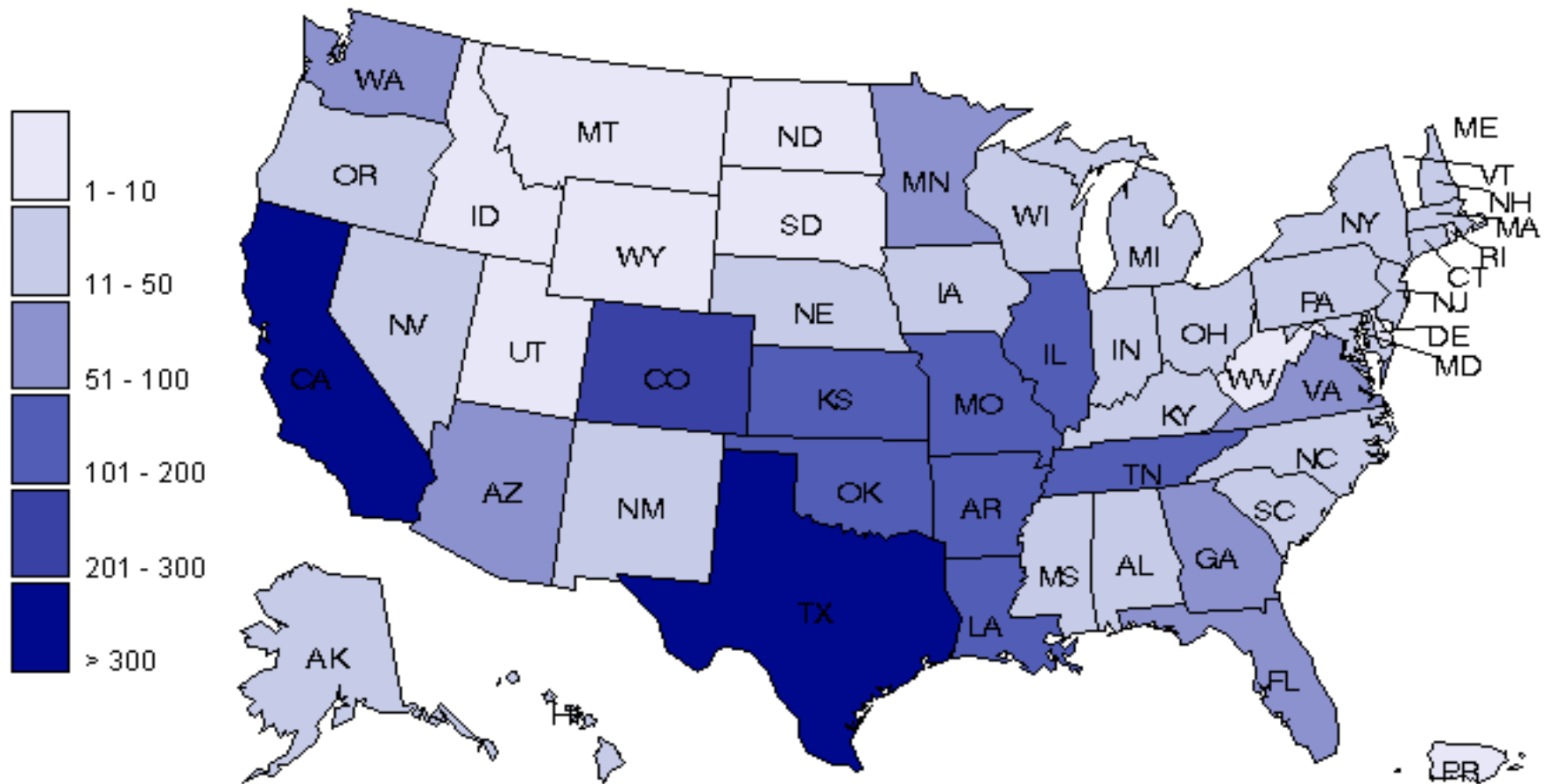
	n		n		n		n		n
Anderson	16	Crane	1	Hartley	0	Madison	7	San Patricio	11
Andrews	0	Crockett	0	Haskell	0	Marion	4	San Saba	1
Angelina	23	Crosby	0	Hays	49	Martin	0	Schleicher	0
Aransas	9	Culberson	2	Hemphill	0	Mason	0	Scurry	2
Archer	3	Dallam	0	Henderson	19	Matagorda	10	Shackelford	1
Armstrong	0	Dallas	1,014	Hidalgo	83	Maverick	10	Shelby	4
Atascosa	5	Dawson	0	Hill	23	McCulloch	1	Sherman	1
Austin	12	De Witt	8	Hockley	2	McLennan	1,832	Smith	100
Bailey	2	Deaf Smith	2	Hood	23	McMullen	1	Somervell	5
Bandera	7	Delta	0	Hopkins	14	Medina	12	Starr	5
Bastrop	18	Denton	400	Houston	3	Menard	0	Stephens	1
Baylor	2	Dickens	0	Howard	5	Midland	49	Sterling	0
Bee	5	Dimmit	0	Hudspeth	0	Milam	9	Stonewall	0
Bell	201	Donley	0	Hunt	14	Mills	3	Sutton	0
Bexar	608	Duval	0	Hutchinson	1	Mitchell	0	Swisher	4
Blanco	2	Eastland	1	Irion	1	Montague	3	Tarrant	941
Borden	0	Ector	15	Jack	1	Montgomery	330	Taylor	60
Bosque	26	Edwards	0	Jackson	5	Moore	3	Terrell	0
Bowie	26	El Paso	121	Jasper	8	Morris	4	Terry	0
Brazoria	112	Ellis	106	Jeff Davis	0	Motley	0	Throckmorton	1
Brazos	41	Erath	13	Jefferson	84	Nacogdoches	20	Titus	9
Brewster	1	Falls	20	Jim Hogg	1	Navarro	26	Tom Green	34
Briscoe	1	Fannin	2	Jim Wells	4	Newton	2	Travis	427
Brooks	0	Fayette	10	Johnson	73	Nolan	3	Trinity	2
Brown	11	Fisher	0	Jones	5	Nueces	87	Tyler	2
Burleson	6	Floyd	0	Karnes	2	Ochiltree	2	Upshur	13
Burnet	14	Foard	0	Kaufman	45	Oldham	0	Upton	0
Caldwell	3	Fort Bend	447	Kendall	46	Orange	5	Uvalde	1
Calhoun	2	Franklin	5	Kenedy	0	Palo Pinto	5	Val Verde	9
Callahan	4	Freestone	14	Kent	0	Panola	7	Van Zandt	15
Cameron	58	Frio	1	Kerr	23	Parker	67	Victoria	35
Camp	1	Gaines	0	Kimble	0	Parmer	0	Walker	20
Carson	3	Galveston	124	King	0	Pecos	1	Waller	9
Cass	8	Garza	0	Kinney	2	Polk	9	Ward	2
Castro	1	Gillespie	17	Kleberg	7	Potter	16	Washington	11
Chambers	13	Glasscock	0	Knox	1	Presidio	0	Webb	20
Cherokee	12	Goliad	0	La Salle	0	Rains	4	Wharton	6
Childress	2	Gonzales	2	Lamar	11	Randall	49	Wheeler	0
Clay	1	Gray	3	Lamb	1	Reagan	0	Wichita	28
Cochran	0	Grayson	35	Lampasas	5	Real	0	Wilbarger	5
Coke	0	Gregg	94	Lavaca	7	Red River	0	Willacy	2
Coleman	0	Grimes	4	Lee	2	Reeves	1	Williamson	320
Collin	617	Guadalupe	56	Leon	6	Refugio	0	Wilson	12
Collingsworth	0	Hale	6	Liberty	20	Roberts	0	Winkler	1
Colorado	6	Hall	0	Limestone	12	Robertson	2	Wise	24
Comal	61	Hamilton	3	Lipscomb	0	Rockwall	83	Wood	9
Comanche	1	Hansford	0	Live Oak	2	Runnels	1	Yoakum	1
Concho	1	Hardeman	1	Llano	6	Rusk	22	Young	9
Cooke	6	Hardin	18	Loving	0	Sabine	4	Zapata	1
Coryell	41	Harris	1,564	Lubbock	48	San Augustine	1	Zavala	
Cottle	0	Harrison	26	Lynn	0	San Jacinto	2	Total	11,652

**Enrollment by State**  
**Fall 2004 - Fall 2010**

Fall	2004	2005	2006	2007	2008	2009	2010
Alabama	33	33	32	29	33	38	39
Alaska	18	20	15	13	9	10	12
Arizona	62	81	79	78	75	72	63
Arkansas	122	105	99	104	110	109	106
California	255	252	269	268	278	296	332
Colorado	132	145	143	179	199	201	230
Connecticut	6	7	8	9	10	11	12
Delaware	0	1	1	3	4	4	5
District of Columbia	2	2	2	1	1	3	2
Florida	80	88	97	86	86	80	78
Georgia	58	63	73	61	73	78	81
Hawaii	15	13	10	14	12	13	14
Idaho	5	9	5	13	10	12	9
Illinois	97	105	117	125	167	155	180
Indiana	28	28	29	28	26	32	34
Iowa	21	19	20	16	20	27	31
Kansas	84	91	33	99	100	98	111
Kentucky	18	13	13	7	13	17	20
Louisiana	136	145	152	176	169	168	155
Maine	6	6	2	3	3	2	0
Maryland	18	28	32	29	19	18	27
Massachusetts	18	19	22	19	25	23	23
Michigan	16	22	31	25	40	37	36
Minnesota	35	35	37	36	49	47	59
Mississippi	37	38	34	28	27	19	18
Missouri	101	100	97	105	119	127	139
Montana	6	1	3	8	6	7	9
Nebraska	34	29	28	31	29	32	34
Nevada	1	12	19	13	13	14	16
New Hampshire	8	5	7	9	12	7	13
New Jersey	24	21	19	23	21	24	28
New Mexico	70	66	69	65	53	46	45
New York	27	24	25	26	26	26	33
North Carolina	37	40	41	57	42	42	43
North Dakota	0	1	1	1	2	5	2
Ohio	27	29	39	45	49	40	50
Oklahoma	184	177	170	175	195	193	199
Oregon	21	21	20	20	25	28	32
Pennsylvania	27	26	32	31	30	38	30
Rhode Island	5	2	4	3	2	0	1
South Carolina	20	16	19	14	16	27	21
South Dakota	12	8	8	11	5	5	4
Tennessee	65	66	80	88	89	103	109
Texas	11233	11349	11316	11355	11616	11647	11652
Utah	6	5	9	10	7	6	7
Vermont	0	2	3	3	2	1	0
Virginia	37	44	55	63	59	56	67
Washington	31	36	31	35	49	45	73
West Virginia	2	1	0	3	3	2	5
Wisconsin	23	17	19	13	18	23	27
Wyoming	4	6	10	12	11	6	5
<b>Total</b>	13307	13472	13479	13668	14057	14120	14321

Source: IRT

Enrollment by State  
Fall 2010



## Countries Represented by Nonresident Aliens, Fall 2003 to Fall 2009

	Fall	2004	2005	2006	2007	2008	2009	2010		Fall	2004	2005	2006	2007	2008	2009	2010
Albania		1	0	0	0	0	1	1	Korea, Rep. of		29	34	36	44	48	51	63
Angola		2	2	2	1	0	0	1	Kosovo		1	0	0	0	0	0	0
Argentina		4	2	1	0	1	2	3	Latvia		2	1	1	0	0	0	0
Armenia		1	1	1	1	1	1	1	Lebanon		1	1	0	1	1	0	0
Australia		4	1	4	5	1	3	5	Liberia		0	0	0	2	1	0	0
Austria		0	0	0	0	0	0	0	Lithuania		0	0	0	0	0	0	1
Azerbaijan		0	1	0	0	0	0	0	Malaysia		1	1	3	3	3	3	2
Bahamas		1	3	3	2	2	2	1	Mali		0	1	1	0	0	0	1
Bangladesh		2	1	2	1	0	1	1	Mexico		8	7	8	10	15	11	18
Barbados		0	0	0	1	1	0	0	Moldova		1	1	0	1	0	0	0
Belarus		1	0	0	0	0	0	0	Mongolia		1	1	1	0	0	0	0
Belgium		0	0	0	0	2	2	3	Montserrat		1	1	1	1	1	0	0
Belize		1	1	0	0	0	1	2	Myanmar		0	0	0	0	0	0	1
Bolivia		3	3	1	1	1	0	0	Namibia		0	0	0	0	1	0	0
Bosnia-Herzegovina		0	0	0	0	0	1	1	Nepal		5	7	5	5	5	9	7
Brazil		3	2	5	7	6	9	12	Netherlands		0	0	0	0	1	1	2
Bulgaria		6	2	3	2	1	1	1	New Zealand		0	3	2	2	0	0	0
Cambodia		0	0	0	0	0	2	2	Nicaragua		2	2	0	0	0	0	0
Cameroon		1	2	2	4	3	3	3	Nigeria		22	30	29	34	34	34	36
Canada		15	13	18	21	21	18	21	Norway		1	0	0	1	2	3	2
Cayman Islands		2	0	0	0	0	0	0	Pakistan		2	3	5	5	1	2	1
Chile		0	0	0	0	1	2	1	Panama		0	1	1	0	0	0	0
China*		70	67	68	90	99	110	152	Peru		2	2	1	0	1	1	2
Colombia		2	7	9	9	7	7	6	Philippines		0	1	0	0	1	1	1
Congo		1	1	1	0	0	1	0	Poland		2	2	1	2	2	2	2
Costa Rica		8	7	1	0	0	0	1	Portugal		0	1	0	0	0	1	0
Cote D'Ivoire		0	0	1	2	2	1	1	Romania		6	2	3	3	1	2	5
Croatia		1	0	0	0	1	2	2	Russia		6	5	4	6	5	4	3
Czech Republic		3	4	5	6	5	1	2	Rwanda		1	1	0	0	0	0	0
Denmark		0	0	0	1	0	0	0	Senegal		0	1	2	2	1	1	0
Dominica		0	0	0	0	0	0	0	Serbia & Montenegro		0	1	1	3	2	2	2
Ecuador		4	3	3	2	2	1	1	Singapore		1	1	0	0	1	1	4
El Salvador		1	2	3	3	4	4	1	Slovakia		2	2	4	4	2	3	1
Estonia		0	0	0	0	1	1	1	Slovenia		1	1	0	1	1	0	1
Ethiopia		0	1	1	1	1	1	1	Somalia		0	0	0	0	0	1	1
Finland		0	1	1	0	0	0	0	South Africa		1	1	2	1	1	1	0
France		8	4	3	3	4	5	3	Spain		2	1	0	1	1	1	2
Gabon		0	0	0	0	1	1	1	Sri Lanka		7	7	5	4	2	1	2
Georgia		0	0	0	0	0	1	1	St Vincent & Grenadines		1	1	0	0	0	0	0
Germany		8	7	7	6	6	11	7	Sweden		5	4	4	3	0	1	2
Ghana		3	2	4	6	8	6	8	Taiwan		17	12	15	14	8	8	8
Greece		1	1	0	0	0	0	0	Thailand		2	3	4	3	2	0	0
Grenada		0	0	0	0	1	1	1	Trinidad/Tobago		3	3	4	2	4	5	5
Guatemala		1	2	1	2	3	3	3	Turkey		1	1	0	2	3	1	0
Haiti		0	0	0	0	1	0	0	Uganda		2	2	1	1	1	1	0
Honduras		2	2	2	3	3	2	4	Ukraine		1	3	2	1	0	1	1
Hungary		1	1	1	1	2	1	2	United Kingdom		8	13	16	14	13	10	7
India		45	34	28	25	17	24	25	Uzbekistan		1	0	1	1	1	0	0
Indonesia		4	5	5	5	4	3	1	Venezuela		10	11	11	12	11	10	10
Iran		1	1	1	1	1	0	1	Vietnam		5	4	5	3	5	8	7
Italy		2	1	0	2	1	1	4	Virgin Islands (British)		1	1	2	1	1	0	0
Jamaica		0	0	0	1	1	1	1	Yemen (Sanaa)		1	0	0	0	0	0	0
Japan		10	13	13	13	12	8	7	Yugoslavia		0	0	0	0	0	0	0
Jordan		0	0	1	0	0	0	0	Zaire		0	0	0	1	1	0	0
Kazakhstan		0	0	0	0	0	0	0	Zambia		0	0	0	0	0	1	1
Kenya		6	5	4	5	4	3	3	Zimbabwe		2	2	3	3	1	0	0
Korea, Dem. People's		0	0	0	0	0	0	0	Unknown		0	0	0	4	0	1	0
									<b>Total</b>		<b>397</b>	<b>388</b>	<b>389</b>	<b>434</b>	<b>417</b>	<b>432</b>	<b>500</b>

\*Hong Kong counted in China.

**Headcount Enrollment by Unit  
Fall 2004 - Fall 2010**

	Fall	2004	2005	2006	2007	2008	2009	2010
<b>College of Arts &amp; Sciences</b>		7,257	7,301	7,129	7,034	7,111	7,089	7,237
<b>School of Business</b>		2,872	2,760	2,835	2,880	3,009	2,928	2,887
<b>School of Education</b>		1,105	1,169	1,229	1,272	1,294	1,322	1,335
<b>School of Engineering &amp; Computer Sci.</b>		495	551	574	593	696	776	832
<b>School of Music</b>		335	340	358	366	369	371	383
<b>School of Nursing</b>		504	532	551	546	553	597	656
<b>School of Social Work</b>			121	175	214	206	208	229
<b>Honors College</b>		173	179	182	206	202	202	202
<b>Institutes &amp; Special Studies</b>		129	76	67	73	78	82	90
<b>Graduate School</b>		7	10	9	9	13	9	13
<b>School of Law</b>		424	432	400	413	423	465	466
<b>Truett Seminary</b>		391	385	377	402	406	399	369
<b>Graduate Military Programs</b>		107	119	154	166	181	166	201
<b>TOTAL</b>		13,799	13,975	14,040	14,174	14,541	14,614	14,900

## Notes:

1. Headcount counts a student once in their primary program.
2. The enrollment for the Graduate School reflects students classified as "No Major."
3. The School of Social Work was established in 2005.

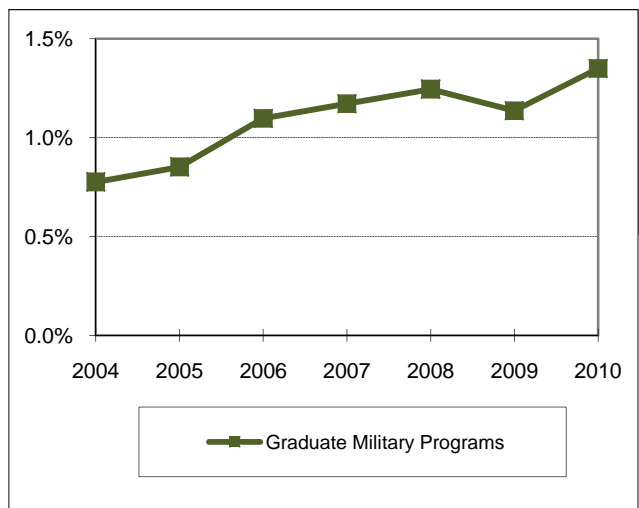
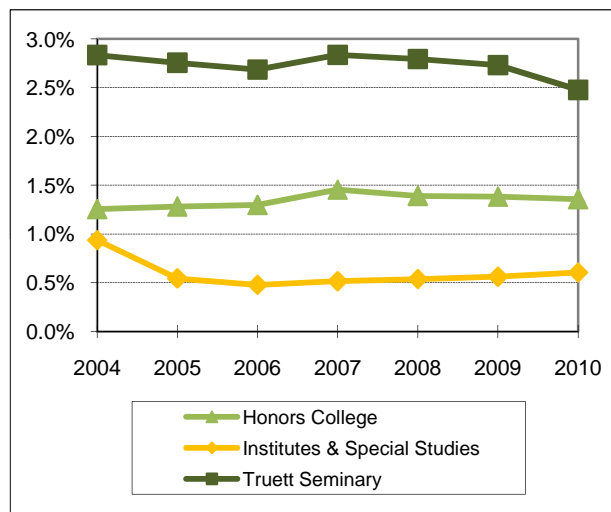
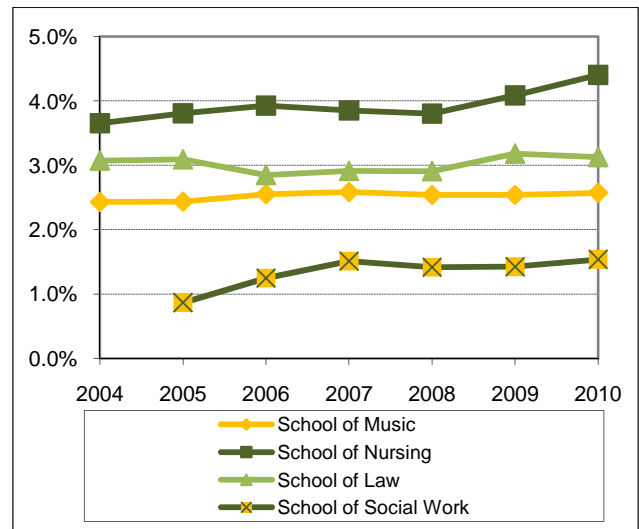
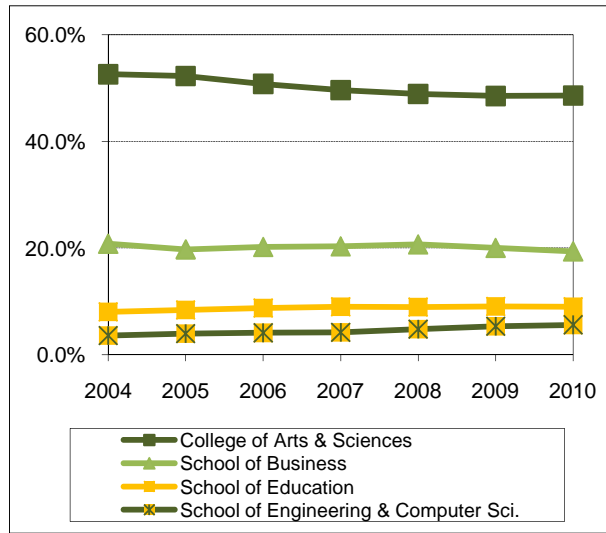
**Program Enrollment by Unit  
Fall 2004 - Fall 2010**

	Fall	2004	2005	2006	2007	2008	2009	2010
<b>College of Arts &amp; Sciences</b>		7,291	7,309	7,140	7,037	7,121	7,095	7,246
<b>School of Business</b>		2,948	2,815	2,904	2,962	3,090	3,016	2,986
<b>School of Education</b>		1,122	1,182	1,237	1,273	1,295	1,322	1,335
<b>School of Engineering &amp; Computer Sci.</b>		496	556	575	594	700	784	841
<b>School of Music</b>		348	354	368	374	380	381	392
<b>School of Nursing</b>		504	532	551	546	553	597	656
<b>School of Social Work</b>			149	203	246	239	251	268
<b>Honors College</b>		173	179	182	206	202	202	202
<b>Institutes &amp; Special Studies</b>		129	76	67	73	78	82	90
<b>Graduate School</b>		7	10	10	9	13	9	13
<b>School of Law</b>		424	432	400	413	423	465	466
<b>Truett Seminary</b>		393	387	379	403	407	399	369
<b>Graduate Military Programs</b>		107	119	154	166	181	166	201
<b>TOTAL</b>		13,942	14,100	14,170	14,302	14,682	14,769	15,065

## Notes:

1. Program Count counts a student in each program.
2. The enrollment for the Graduate School reflects students classified as "No Major."
3. The School of Social Work was established in 2005.

Headcount Enrollment Percentage by Unit  
Fall 2004 - Fall 2010



	Fall	2004	2005	2006	2007	2008	2009	2010
<b>College of Arts &amp; Sciences</b>		52.6%	52.2%	50.8%	49.6%	48.9%	48.5%	48.6%
<b>School of Business</b>		20.8%	19.7%	20.2%	20.3%	20.7%	20.0%	19.4%
<b>School of Education</b>		8.0%	8.4%	8.8%	9.0%	8.9%	9.0%	9.0%
<b>School of Engineering &amp; Computer Sci.</b>		3.6%	3.9%	4.1%	4.2%	4.8%	5.3%	5.6%
<b>School of Music</b>		2.4%	2.4%	2.5%	2.6%	2.5%	2.5%	2.6%
<b>School of Nursing</b>		3.7%	3.8%	3.9%	3.9%	3.8%	4.1%	4.4%
<b>School of Social Work</b>			0.9%	1.2%	1.5%	1.4%	1.4%	1.5%
<b>Honors College</b>		1.3%	1.3%	1.3%	1.5%	1.4%	1.4%	1.4%
<b>Institutes &amp; Special Studies</b>		0.9%	0.5%	0.5%	0.5%	0.5%	0.6%	0.6%
<b>Graduate School</b>		0.1%	0.1%	0.1%	0.1%	0.1%	0.1%	0.1%
<b>School of Law</b>		3.1%	3.1%	2.8%	2.9%	2.9%	3.2%	3.1%
<b>Truett Seminary</b>		2.8%	2.8%	2.7%	2.8%	2.8%	2.7%	2.5%
<b>Graduate Military Programs</b>		0.8%	0.9%	1.1%	1.2%	1.2%	1.1%	1.3%

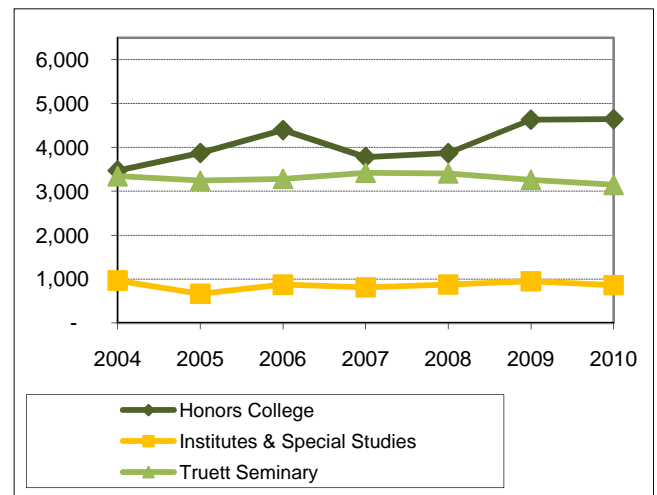
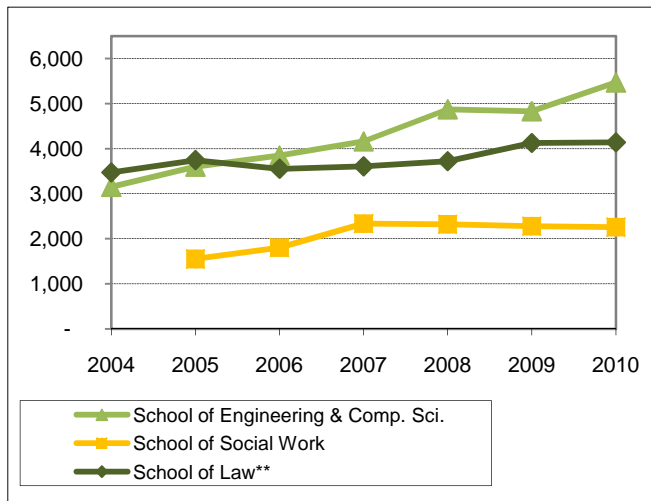
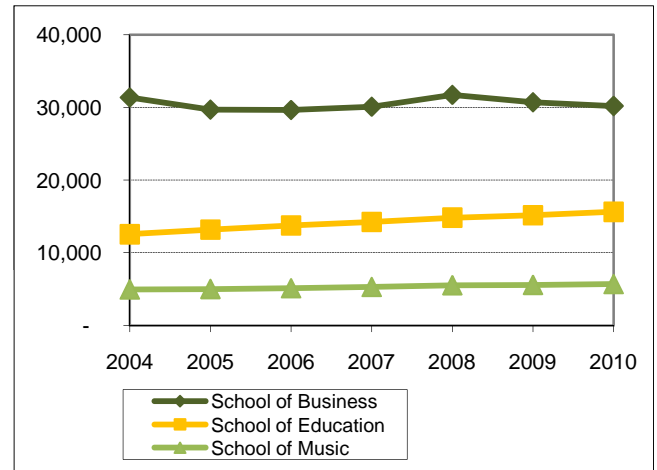
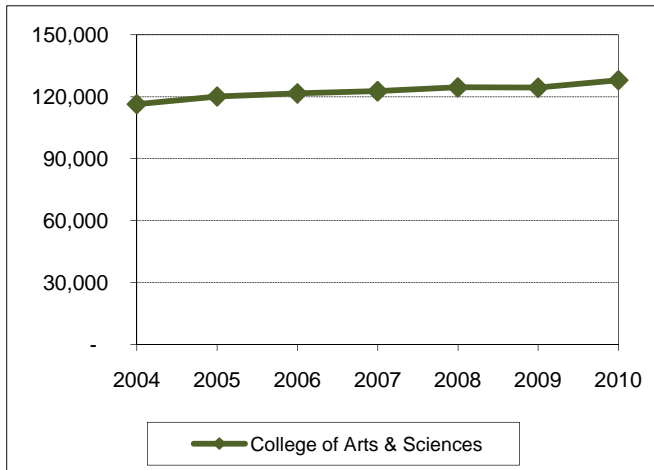
Notes:

1. Headcount counts a student once in their primary program.



**Student Credit Hours by Unit\*  
(Excluding Military Programs)  
Fall 2004 - Fall 2010**

Fall	2004	2005	2006	2007	2008	2009	2010
College of Arts & Sciences	116,430	120,123	121,641	122,705	124,545	124,416	128,054
School of Business	31,387	29,696	29,645	30,081	31,733	30,707	30,200
School of Education	12,551	13,175	13,770	14,257	14,833	15,179	15,635
School of Engineering & Comp. Sci.	3,153	3,601	3,847	4,159	4,874	4,831	5,467
School of Music	4,961	5,021	5,126	5,304	5,538	5,583	5,696
School of Nursing	4,107	4,235	4,209	4,215	4,443	4,638	5,257
School of Social Work		1,551	1,802	2,334	2,321	2,277	2,258
Honors College	3,474	3,872	4,394	3,780	3,870	4,630	4,642
Institutes & Special Studies	963	660	870	809	874	947	856
School of Law**	3,470	3,745	3,553	3,604	3,721	4,128	4,141
Truett Seminary	3,343	3,242	3,284	3,419	3,406	3,262	3,146
<b>TOTAL</b>	<b>183,839</b>	<b>188,921</b>	<b>192,141</b>	<b>194,667</b>	<b>200,158</b>	<b>200,598</b>	<b>205,352</b>

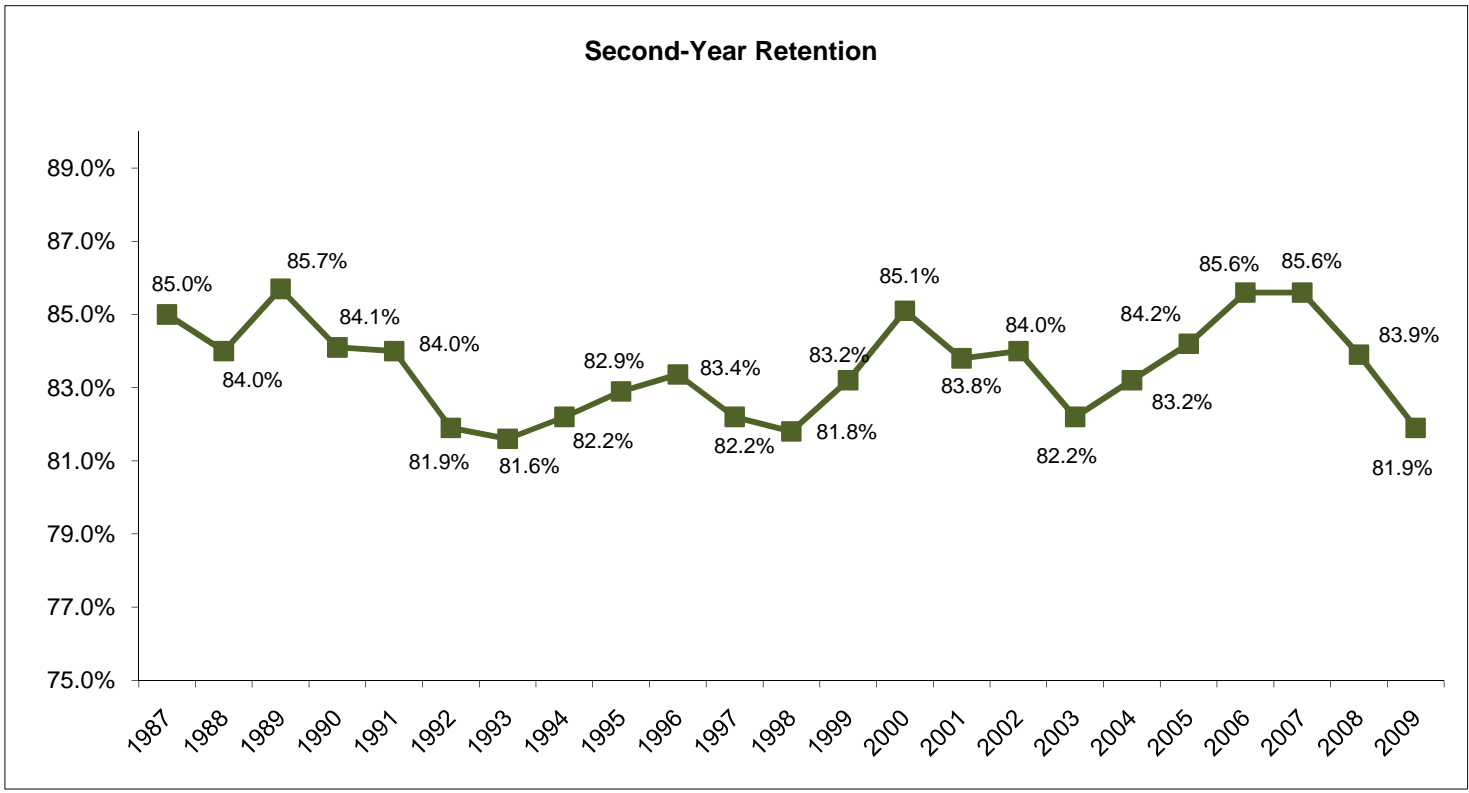


\*BIC courses have been credited to the department of the instructor.

\*\*Quarter hours converted to semester hours.

Retention of First-Time Freshman Classes Entering Fall 1987 - Fall 2009

First-Time Freshman Class of:	N	After 1 year		After 2 years		After 3 years			After 4 years			After 5 years			After 6 years		
		Cont.	Drop.	Cont.	Drop.	Cont.	Drop.	Grad.	Cont.	Drop.	Grad.	Cont.	Drop.	Grad.	Cont.	Drop.	Grad.
1987	2,313	85.0%	15.0%	75.6%	24.4%	71.7%	27.1%	1.2%	24.2%	28.2%	47.6%	3.4%	28.3%	68.3%	1.1%	28.2%	70.7%
1988	2,302	84.0%	16.0%	75.5%	24.5%	72.5%	26.5%	1.0%	29.8%	28.3%	41.9%	3.3%	28.5%	68.2%	0.8%	27.9%	71.3%
1989	2,357	85.7%	14.3%	74.8%	25.2%	71.2%	27.7%	1.1%	28.3%	28.9%	42.8%	3.9%	28.9%	67.2%	1.2%	28.8%	70.0%
1990	2,435	84.1%	15.9%	73.0%	27.0%	69.8%	29.0%	1.2%	28.1%	29.6%	42.3%	4.2%	30.0%	65.8%	1.6%	29.4%	69.0%
1991	2,156	84.0%	16.0%	74.5%	25.5%	70.7%	28.2%	1.1%	26.5%	29.6%	43.9%	3.8%	29.7%	66.5%	1.3%	29.0%	69.7%
1992	2,367	81.9%	18.1%	71.5%	28.5%	67.2%	31.5%	1.4%	28.4%	32.3%	39.3%	4.8%	32.0%	63.2%	0.9%	32.2%	66.9%
1993	2,433	81.6%	18.4%	72.0%	28.0%	68.4%	30.4%	1.2%	27.5%	32.3%	40.2%	4.5%	32.3%	63.2%	1.3%	31.8%	66.9%
1994	2,351	82.2%	17.8%	72.3%	27.7%	68.5%	30.1%	1.4%	27.0%	31.1%	41.9%	4.9%	31.9%	63.2%	1.5%	31.8%	66.7%
1995	2,339	82.9%	17.1%	76.0%	24.0%	71.4%	27.2%	1.4%	28.8%	28.3%	42.9%	4.4%	28.5%	67.1%	1.2%	28.0%	70.8%
1996	2,476	83.4%	16.6%	74.8%	25.2%	72.2%	26.9%	0.9%	29.4%	27.7%	42.9%	4.0%	27.6%	68.4%	1.3%	27.0%	71.7%
1997	2,410	82.2%	17.8%	73.7%	26.3%	70.3%	28.4%	1.2%	30.0%	29.9%	40.1%	4.9%	29.0%	66.1%	1.4%	28.5%	70.2%
1998	2,938	81.8%	18.2%	75.0%	25.0%	71.1%	27.1%	1.7%	28.9%	28.1%	43.0%	4.6%	29.4%	66.0%	1.4%	26.8%	71.9%
1999	2,772	83.2%	16.8%	75.5%	24.5%	70.7%	27.5%	1.8%	27.7%	27.0%	45.3%	3.9%	27.0%	69.1%	1.2%	26.8%	72.0%
2000	2,832	85.1%	14.9%	77.9%	22.1%	74.3%	25.0%	0.8%	26.4%	24.6%	49.0%	3.6%	24.9%	71.5%	1.1%	25.0%	73.9%
2001	2,801	83.8%	16.2%	75.7%	24.3%	73.3%	25.3%	1.4%	25.2%	26.8%	47.9%	3.5%	27.5%	69.0%	1.0%	27.4%	71.6%
2002	2,620	84.0%	16.0%	76.3%	23.7%	72.6%	25.5%	1.9%	22.7%	26.6%	50.7%	2.7%	26.7%	70.6%	0.8%	26.7%	72.6%
2003	2,678	82.2%	17.8%	74.5%	25.5%	70.6%	27.4%	1.9%	23.7%	28.9%	47.3%	3.6%	29.0%	67.4%	1.0%	28.9%	70.1%
2004	2,785	83.2%	16.8%	76.0%	24.0%	72.5%	26.0%	1.5%	22.4%	27.4%	50.2%	3.6%	28.0%	68.5%	1.5%	27.5%	71.0%
2005	3,168	84.2%	15.8%	77.1%	22.8%	71.9%	25.9%	2.1%	20.9%	27.3%	51.8%	3.1%	27.8%	69.0%			
2006	2,783	85.6%	14.4%	78.0%	21.8%	74.3%	23.9%	1.8%	19.9%	24.4%	56.0%						
2007	2,732	85.6%	14.4%	77.7%	22.2%	74.4%	23.6%	2.0%									
2008	3,062	83.9%	16.1%	76.6%	23.4%												
2009	3,098	81.9%	18.1%														
Average		83.5%	16.5%	75.2%	24.8%	71.4%	27.1%	1.4%	26.3%	28.4%	45.4%	3.9%	28.8%	67.3%	1.2%	28.4%	70.4%
5-year Avg		84.2%	15.8%	77.1%	22.8%	72.7%	25.4%	1.9%	21.9%	26.9%	51.2%	3.3%	27.8%	68.9%	1.1%	27.1%	71.8%

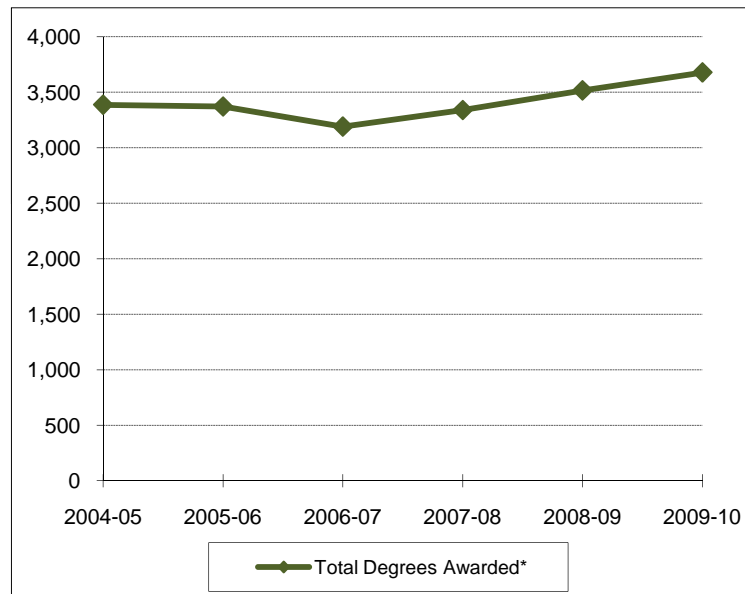
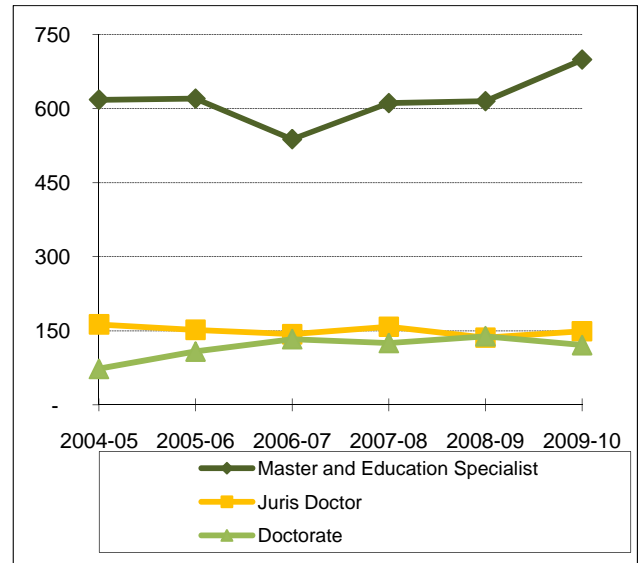
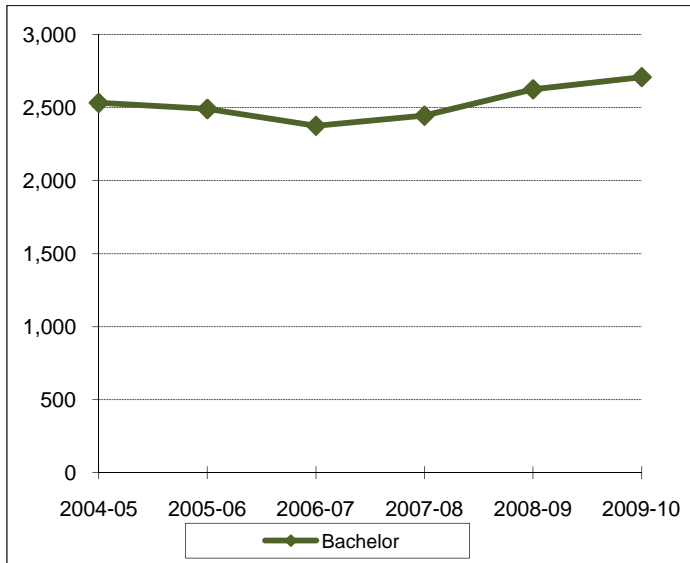


**Distribution of Degrees (Duplicated Count\*)  
2004-05 through 2009-10**

	2004-05	2005-06	2006-07	2007-08	2008-09	2009-10
Bachelor of Arts	1084	1075	931	1042	1105	1068
Bachelor of Business Administration	909	821	761	760	757	860
Bachelor of Fine Arts	54	42	51	36	53	53
Bachelor of Music	39	36	33	34	34	34
Bachelor of Music Education	19	18	29	21	16	28
Bachelor of Science	261	270	289	306	371	332
Bachelor of Science in Aviation Sciences	6	13	8	6	4	10
Bachelor of Science in Computer Science	17	23	16	14	6	18
Bachelor of Science in Education	213	212	194	245	258	279
Bachelor of Science in Electrical & Computer Engineering	16	24	28	12	18	27
Bachelor of Science in Engineering	1	3	4	1	8	3
Bachelor of Science in Family & Consumer Sciences	87	77	100	87	83	99
Bachelor of Science in Informatics	12	11	9	6	9	7
Bachelor of Science in Mechanical Engineering	20	14	27	22	45	42
Bachelor of Science in Nursing	108	121	123	112	112	128
Bachelor of Social Work	2	13	19	36	38	40
<b>TOTAL BACHELOR DEGREES</b>	<b>2848</b>	<b>2773</b>	<b>2622</b>	<b>2740</b>	<b>2917</b>	<b>3028</b>
Int'l Masters of Environmental Science	0	0	0	2	2	0
Master of Accountancy	40	39	33	21	36	24
Master of Arts	74	67	71	62	64	67
Master of Business Administration	104	74	77	104	103	143
Master of Business Admin. in International Management	0	1	0	1	3	0
Master of Divinity	70	74	57	69	78	72
Master of Engineering		1	2	0	3	3
Master of Environmental Studies	2	3	1	1	3	2
Master of Fine Arts	2	2	3	3	3	1
Master of Health Administration	43	45	41	39	34	41
Master of International Journalism	2	1	2	2	2	3
Master of Music	25	26	28	24	21	34
Master of Physical Therapy	16	0	0	0	0	0
Master of Public Health						4
Master of Public Policy and Administration	3	3	0	1	2	0
Master of Science	44	38	33	35	41	45
Master of Science in Biomedical Engineering		2	1	1	1	2
Master of Science in Clinical Psychology	11	7	4	5	6	7
Master of Science in Communication Sciences & Disorders	22	34	25	30	31	30
Master of Science in Economics	4	8	9	6	9	8
Master of Science in Education	80	97	74	93	60	93
Master of Science in Electrical/Computer Engineering	1	6	1	2	4	4
Master of Science in Information Systems	15	15	12	14	12	6
Master of Science in Mechanical Engineering		1	0	1	2	1
Master of Science in Nursing	15	20	15	14	14	16
Master of Social Work	32	39	30	63	57	58
Master of Taxation	11	13	11	10	12	20
Master of Theological Studies		2	4	4	8	13
<b>TOTAL MASTER'S DEGREES</b>	<b>616</b>	<b>618</b>	<b>534</b>	<b>605</b>	<b>609</b>	<b>697</b>
<b>TOTAL EDUCATION SPECIALIST DEGREES</b>	<b>2</b>	<b>2</b>	<b>7</b>	<b>4</b>	<b>4</b>	<b>7</b>
<b>TOTAL JURIS DOCTOR DEGREES</b>	<b>163</b>	<b>163</b>	<b>143</b>	<b>158</b>	<b>136</b>	<b>136</b>
Doctor of Education	22	26	10	6	4	6
Doctor of Ministry	5	5	8	5	5	7
Doctor of Philosophy	29	50	56	37	65	63
Doctor of Psychology	12	9	12	8	0	3
Doctor of Physical Therapy		14	43	62	53	16
Doctor of Science in Physical Therapy	5	4	4	3	5	4
Doctor of Science in Physician Asst Studies				4	7	19
Doctor in Nursing Practice						3
<b>TOTAL DOCTORAL DEGREES</b>	<b>73</b>	<b>108</b>	<b>133</b>	<b>121</b>	<b>132</b>	<b>99</b>
<b>TOTAL DEGREES AWARDED</b>	<b>3702</b>	<b>3664</b>	<b>3439</b>	<b>3628</b>	<b>3798</b>	<b>3967</b>

\* Degree information on this page is reported beginning with the Summer semester and including the following Fall and Spring terms. An individual graduate with multiple majors is counted as a whole graduate in each major area of study (i.e., duplicated count).

**Summary of Degrees Awarded (Unduplicated Count\*)  
2004-05 through 2009-10**



<b>Degree Level:</b>	<b>2004-05</b>	<b>2005-06</b>	<b>2006-07</b>	<b>2007-08</b>	<b>2008-09</b>	<b>2009-10</b>
Bachelor	2,533	2,491	2,376	2,445	2,626	2,709
Master and Education Specialist	618	620	538	611	615	699
Juris Doctor	163	152	143	158	136	149
Doctorate	73	108	133	125	139	121
<b>Total Degrees Awarded*</b>	<b>3,387</b>	<b>3,371</b>	<b>3,190</b>	<b>3,339</b>	<b>3,516</b>	<b>3,678</b>

\*The information on this page indicates the number of degree recipients (i.e., unduplicated count). Degree information is reported beginning with the Summer semester and including the following Fall and Spring terms.

**Degree Programs  
(as of November 2010)**

Accounting (BBA)	Clinical Orthopaedics (DScPAS)	Environmental Science (BS)
Accounting (MAcc)	Clinical Psychology (MSCP)	Environmental Science (MS)
Advanced Nursing Leadership (MSN)	Clinical Psychology (PsyD)	Environmental Studies (BA)
Air Science and Environment (IMES)	Collaborative Piano (MM)	Environmental Studies (BS)
American Studies (BA)	Communication Sci. & Disorders (BA)	Environmental Studies (MES)
American Studies (MA)	Communication Sci. & Disorders (MA)	Exercise, Nutrition and Preventive Health (PhD)
Anthropology (BA)	Communication Sci. & Disorders (MSCSD)	Exercise Physiology (BSEd)
Anthropology (BS)	Communication Specialist (BA)	Family Nurse Practitioners (MSN)
Applied Mathematics (BS)	Communication Studies (MA)	Fashion Design (BA)
Applied Music (BM)	Community Health (BSEd)	Fashion Design (BSFCS)
Architecture (BA)	Community Health Education (MPH)	Fashion Merchandising (BA)
Art History (BA)	Composition (BM)	Fashion Merchandising (BSFCS)
Asian Studies (BA)	Composition (MM)	Film and Digital Media (BA)
Astronomy (BA)	Computer Science (BA)	Finance (BBA)
Astronomy (BS)	Computer Science (BSCS)	Financial Services / Planning (BBA)
Astrophysics (BA)	Computer Science Fellows (BSC)	Forestry (BA)
Astrophysics (BS)	Computer Science (MS)	Forestry (BS)
Athletic Training (BSEd)	Conducting (MM)	French (BA)
Aviation Sciences (BSAvSc)	Curriculum & Instruction (EdD)	General Family & Consumer Sci. (BA)
Baylor Business Fellows (BBA)	Curriculum & Instruction (MA)	General Family & Consumer Sci. (BSFCS)
Biblical & Related Languages (BA)	Curriculum & Instruction (MSEd)	General Studies in HHPR (BSEd)
Biochemistry (BA)	Curriculum & Instruction (PhD)	Geography (BA)
Biochemistry (BS)	Dentistry (BA)	Geology (BS)
Bioinformatics (BSI)	Dentistry (BS)	Geology (MS)
Biology (BA)	Directing (MFA)	Geology (PhD)
Biology (BS)	Distribution Management/Technology (BBA)	Geophysics (BS)
Biology (MA)	Earth Science (BA)	German (BA)
Biology (MS)	Earth Science (MA)	Great Texts of the Western Tradition (BA)
Biology (PhD)	Ecological, Earth & Environmental Sciences (PhD)	Greek (BA)
Biomedical Engineering (MSBME)	Economics (BA)	Health Care Administration (MHA)
Biomedical Studies (MS)	Economics (BBA)	Health, Human Performance & Recreation (MSEd)
Biomedical Studies (PhD)	Economics (BS)	Health Science Studies (BSEd)
Business Administration (MBA)	Economics (MSEco)	Higher Education & Student Affairs (MSEd)
Business for Secondary Education (BBA)	Education (MA)	History (BA)
Business French (BBA)	Educational Administration (EdS)	History (MA)
Business German (BBA)	Educational Administration (MSEd)	History (PhD)
Business - Journalism (BBA)	Educational Psychology (MA)	Human Resources Management (BBA)
Business Russian (BBA)	Educational Psychology (MSEd)	Information Systems (BBA)
Business Spanish (BBA)	Educational Psychology (PhD)	Information Systems (MSIS)
Chemistry (BA)	Electrical & Computer Engineering (BSECE)	Information Systems (PhD)
Chemistry (BS)	Electrical & Computer Engineering (MSECE)	Instrumental Music (BME)
Chemistry (MS)	Electrical & Computer Engineering (PhD)	Interior Design (BA)
Chemistry (PhD)	Elementary Education (BSEd)	Interior Design (BSFCS)
Child & Family Studies (BA)	Emergency Medicine (DScPAS)	International Business (BBA)
Child & Family Studies (BSFCS)	Engineering (BSE)	International Economics (MA)
Choral Music (BME)	Engineering (ME)	International Economics (MS)
Church Music (BM)	English (BA)	International Journalism (MIJ)
Church Music (MM)	English (MA)	International Relations (MA)
Church-State Studies (MA)	English (PhD)	International Studies (BA)
Church-State Studies (PhD)	Entrepreneurship (BBA)	Journalism (BA)
Classics (BA)	Environmental Biology (MS)	Journalism (MA)
Clinical Laboratory Science (BS)	Environmental Health Science (BS)	Language and Linguistics (BA)

Latin American Studies (BA)	Piano Pedagogy & Performance (MM)
Latin (BA)	Political Science (BA)
Law (JD)	Political Science (MA)
Limnology (MSL)	Political Science (PhD)
Management (BBA)	Professional Selling (BBA)
Marketing (BBA)	Professional Writing (BA)
Mathematics (BA)	Psychology (BA)
Mathematics (BS)	Psychology (BS)
Mathematics (MS)	Psychology (PhD)
Mathematics (PhD)	Public Administration (BBA)
Mechanical Engineering (BSME)	Public Policy & Administration (MPPA)
Mechanical Engineering (MSME)	Real Estate (BBA)
Media Business (BBA)	Recreation (BSEd)
Medical Humanities (BA)	Religion (BA)
Medicine (BA)	Religion (MA)
Medicine (BS)	Religion (PhD)
Middle Grades English Lang Arts Reading (BSEd)	Religion, Politics and Society (PhD)
Middle Grades Mathematics (BSEd)	Risk Management and Insurance (BBA)
Middle Grades Science (BSEd)	Russian (BA)
Middle Grades Social Studies (BSEd)	School Psychology (EdS)
Ministry (DMin)	Secondary English Lang Arts Reading (BSEd)
Museum Studies (MA)	Secondary Life Sciences (BSEd)
Music (BA)	Secondary Mathematics (BSEd)
Music Education (MM)	Secondary Physical Sciences (BSEd)
Music History & Literature (BM)	Secondary Social Studies (BSEd)
Music History & Literature (MM)	Slavic and East European Studies (BA)
Music Theory (MM)	Social Work (BSW)
Neonatal Nurse Practitioner (MSN)	Social Work (MSW)
Neuroscience (BS)	Social Work (PhD)
Neuroscience (MA)	Sociology (BA)
Nurse Practitioner (DNP)	Sociology (MA)
Nurse-Midwifery (DNP)	Sociology (PhD)
Nursing (BSN)	Spanish All-Level (BSEd)
Nutrition (MS)	Spanish (BA)
Nutrition Sciences (BA)	Spanish (MA)
Nutrition Sciences (BS)	Special Education All-Level (BSEd)
Nutrition Sciences (BSFCS)	Speech Communication (BA)
Occupational Therapy (DScOT)	Sports, Sponsorship & Sales (BBA)
Optometry (BA)	Statistics (BS)
Optometry (BS)	Statistics (MS)
Pedagogy (BM)	Statistics (PhD)
Performance (MM)	Studio Art (BA)
Philosophy (BA)	Studio Art (BFA)
Philosophy (MA)	Taxation (MT)
Philosophy (PhD)	Theater Arts (BA)
Physical Education All-Level (BSEd)	Theater Arts (MA)
Physical Therapy (DPT)	Theater Design (BFA)
Physical Therapy (DScPT)	Theater Performance (BFA)
Physics (BA)	Theological Studies (MTS)
Physics (BS)	Theology (MDiv)
Physics (MA)	Theory (BM)
Physics (MS)	University Scholars (BA)
Physics (PhD)	

**Profile of First-Time Freshmen  
Fall 2004 - Fall 2010**

	2004	2005	2006	2007	2008	2009	2010
New Freshmen Enrollment	2785	3168	2783	2732	3062	3098	3259
Men	39.6%	41.0%	38.3%	40.6%	41.1%	41.1%	41.2%
Women	60.4%	59.0%	61.7%	59.4%	58.9%	58.9%	58.8%
African American / Black	8.4%	9.0%	6.4%	7.6%	7.9%	9.8%	8.1%
Alaskan Native / Amer. Indian	0.6%	0.8%	0.7%	0.4%	1.0%	0.6%	0.2%
Asian							7.8%
Asian/Pacific Islander	8.2%	7.8%	6.2%	8.5%	7.7%	7.7%	
Hispanic	10.6%	11.0%	9.2%	10.5%	12.7%	14.9%	15.6%
Pacific Islander							0.0%
White	69.7%	69.4%	75.9%	71.2%	68.5%	63.9%	63.4%
Multiracial							4.8%
Other	2.4%	2.0%	1.5%	1.8%	2.1%	2.1%	
Not Specified/Unknown	0.1%	0.1%	0.0%	0.0%	0.0%	0.9%	0.2%
Residence							
Texas	81.4%	81.2%	79.8%	77.9%	81.0%	79.8%	78.3%
Out-of-State	17.3%	17.6%	18.8%	20.6%	17.6%	18.5%	19.9%
Foreign	1.1%	1.1%	1.1%	1.4%	1.2%	1.5%	1.6%
Unknown	0.2%	0.1%	0.3%	0.1%	0.2%	0.2%	0.1%
Average SAT Score (1)							
Number of Students	1931	2284	1860	1801	2015	1808	1787
Total SAT	1190	1196	1213	1219	1210	1190	1218
English	589	593	599	602	596	586	598
Math	601	604	614	617	614	604	620
Writing (2)			586	587	584	571	583
Average ACT Score (1)							
Number of Students	853	884	923	931	1046	1290	1472
Composite	24.8	24.6	25.2	25.7	25.4	25.9	26.4
Reading	26.0	25.9	26.4	26.7	26.3	26.8	27.3
Math	23.8	23.6	24.5	25.0	24.9	25.3	25.8
Science	24.0	23.7	24.2	24.6	24.5	25.0	25.4
English	24.8	24.6	25.1	25.8	25.5	26.0	26.5
Writing (2)			24.2	24.8	24.5	24.2	24.7
High School Class Quartile							
First Quartile	60.0%	60.4%	61.3%	65.9%	60.9%	62.7%	58.6%
Second Quartile	21.2%	20.9%	20.1%	15.7%	19.5%	19.3%	19.4%
Third Quartile	7.3%	6.8%	5.2%	4.4%	4.1%	3.8%	4.2%
Fourth Quartile	1.3%	1.5%	0.8%	0.5%	0.4%	0.4%	0.3%
No Rank	10.2%	10.5%	12.6%	13.6%	15.1%	13.8%	17.4%
Average Credit Hour Load	14.6	14.5	14.8	14.9	14.8	14.7	14.8

## Notes:

1. In this table, the highest SAT score is compared to the highest ACT score for each student, and only the better is retained.
2. The ACT and SAT writing scores are not currently included in admissions decisions.

Source: IRT

**Profile of Undergraduate Transfers  
Fall 2004 - Fall 2010**

	2004	2005	2006	2007	2008	2009	2010
Transfer Enrollment	425	422	494	452	404	422	417
Men	44.9%	45.7%	43.9%	44.0%	41.1%	41.5%	47.0%
Women	55.1%	54.3%	56.1%	56.0%	58.9%	58.5%	53.0%
African American / Black	11.1%	9.0%	8.9%	11.3%	9.9%	12.1%	9.4%
Alaskan Native / Amer. Indian	0.7%	0.0%	0.8%	0.9%	0.7%	1.4%	0.2%
Asian							14.6%
Asian/Pacific Islander	7.3%	8.8%	6.1%	6.6%	8.2%	7.3%	
Hispanic	10.8%	13.7%	15.2%	11.5%	11.9%	14.7%	14.4%
Pacific Islander							0.2%
White	67.1%	66.4%	65.8%	67.3%	66.6%	61.4%	54.4%
Multiracial							6.2%
Other	3.1%	1.9%	3.0%	2.4%	2.7%	2.4%	
Not Specified/Unknown	0.0%	0.2%	0.2%	0.0%	0.0%	0.7%	0.5%
Residence							
Texas	84.0%	81.8%	83.8%	82.1%	77.5%	83.6%	70.7%
Out-of-State	12.2%	12.6%	11.9%	14.6%	16.1%	6.9%	15.3%
Foreign	3.3%	5.2%	3.6%	2.9%	6.4%	5.2%	13.7%
Unknown	0.5%	0.5%	0.6%	0.4%	0.0%	0.0%	0.2%
Average SAT Score (1,2)							
Number of Students	136	146	149	168	137	134	128
Total SAT	1077	1074	1100	1099	1115	1069	1095
English	536	529	546	552	548	530	546
Math	541	546	555	548	566	540	549
Writing (3)				546	541	523	532
Average ACT Score (1,2)							
Number of Students	95	63	96	77	86	117	79
Composite	21.1	22.8	22.9	22.5	23.3	22.9	22.0
Reading	21.7	23.9	23.9	23.6	24.3	23.7	22.7
Math	20.4	21.7	22.2	21.3	22.9	22.5	21.4
Science	21.4	22.7	22.4	21.6	22.5	21.8	21.5
English	20.6	22.5	22.7	22.8	22.7	23.1	21.6
Writing (3)					22.3	23.1	21.2
High School Class Quartile							
First Quartile	18.4%	20.1%	18.4%	19.9%	23.0%	34.4%	23.5%
Second Quartile	14.8%	13.3%	12.8%	17.5%	16.3%	19.9%	22.1%
Third Quartile	8.2%	7.1%	6.5%	9.7%	8.4%	14.0%	14.1%
Fourth Quartile	3.8%	1.9%	3.2%	2.2%	2.2%	4.7%	5.0%
No Rank	54.8%	57.6%	59.1%	50.7%	50.0%	27.0%	35.3%
Average Credit Hour Load	14.1	14.3	14.3	14.5	14.3	14.4	14.4

## Notes:

1. Transfer students with strong credentials from their previous academic work are not required to submit entrance test scores to the university.
2. In this table, the highest SAT score is compared to the highest ACT score for each student, and only the better is retained.
3. The ACT and SAT writing scores are not currently included in admissions decisions.

Source: IRT



**Profile of Undergraduate Students  
Fall 2004 - Fall 2010**

	2004	2005	2006	2007	2008	2009	2010
Undergraduate Student Enrollment	11580	11825	11831	11902	12162	12149	12438
Men	41.6%	41.5%	40.6%	41.5%	41.8%	41.5%	42.2%
Women	58.4%	58.5%	59.4%	58.5%	58.2%	58.5%	57.8%
African American / Black	7.3%	8.0%	7.8%	7.8%	7.8%	8.1%	7.8%
Alaskan Native / Amer. Indian	0.6%	0.6%	0.6%	0.6%	0.8%	0.7%	0.4%
Asian							7.8%
Asian / Pacific Islander	6.8%	7.3%	7.4%	7.8%	7.6%	7.7%	
Hispanic	8.6%	9.8%	9.9%	10.4%	10.7%	11.6%	13.4%
Pacific Islander							0.1%
White	74.3%	72.1%	72.2%	71.3%	71.1%	69.5%	66.3%
Multiracial							4.0%
Other	2.4%	2.2%	2.0%	2.1%	2.0%	2.0%	
Not Specified/Unknown	0.0%	0.0%	0.0%	0.0%	0.0%	0.3%	0.2%
Residence							
Texas	82.8%	82.4%	81.8%	81.2%	80.9%	80.8%	79.6%
Out-of-State	15.2%	15.4%	15.9%	16.7%	17.1%	17.1%	17.8%
Foreign	1.6%	1.6%	1.6%	1.8%	1.8%	1.9%	2.3%
Unknown	0.4%	0.6%	0.6%	0.3%	0.2%	0.2%	0.3%
Average SAT Score (1)							
Number of Students	7,342	7,507	7,405	7,507	7,707	7,276	7,062
Total SAT	1179	1185	1195	1202	1205	1203	1207
English	582	586	590	594	595	593	594
Math	596	599	605	608	610	610	613
Writing (2)			582	585	585	582	582
Average ACT Score (1)							
Number of Students	3,522	3,567	3,648	3,650	3,761	4,255	4,684
Composite	24.4	24.5	24.6	24.9	25.1	25.6	25.9
Reading	25.5	25.6	25.7	26.0	26.2	26.5	26.7
Math	23.4	23.5	23.7	24.1	24.4	25.0	25.3
Science	23.7	23.7	23.7	24.0	24.2	24.6	24.9
English	24.3	24.4	24.5	24.9	25.1	25.7	25.9
Writing (2)			24.3	24.6	24.5	24.4	24.5
High School Class Quartile							
First Quartile	56.3%	55.9%	55.4%	57.2%	57.5%	58.6%	57.9%
Second Quartile	21.2%	20.6%	19.3%	18.3%	18.3%	18.1%	17.8%
Third Quartile	6.6%	6.5%	6.0%	5.7%	5.5%	5.1%	5.0%
Fourth Quartile	2.0%	1.7%	1.4%	1.0%	0.8%	0.8%	0.9%
No Rank	14.0%	15.3%	17.9%	17.8%	17.9%	17.4%	18.5%
Average Credit Hour Load	14.4	14.6	14.8	14.9	14.9	14.9	15.0

## Notes:

1. In this table, the highest SAT score is compared to the highest ACT score for each student, and only the better is retained.
2. The ACT and SAT writing scores are not currently included in admissions decisions.

**Profile of Students in the Graduate School  
Fall 2004 - Fall 2010**

	2004	2005	2006	2007	2008	2009	2010
Graduate School Enrollment	1297	1171	1221	1213	1285	1468	1481
Men	51.5%	50.7%	48.8%	50.4%	49.2%	51.2%	50.2%
Women	48.5%	49.3%	51.2%	49.6%	50.8%	48.8%	48.3%
African American / Black	4.8%	5.1%	4.8%	4.5%	4.2%	4.2%	3.2%
Alaskan Native / Amer. Indian	0.5%	0.9%	0.8%	0.8%	0.9%	0.8%	0.4%
Asian							11.4%
Asian / Pacific Islander	12.0%	12.7%	11.4%	12.6%	11.9%	11.6%	0.0%
Hispanic	7.0%	6.7%	6.1%	6.4%	7.4%	6.9%	6.9%
Pacific Islander							0.1%
White	72.7%	71.9%	73.5%	72.5%	73.0%	73.8%	74.3%
Multiracial							2.8%
Other	2.8%	2.6%	3.4%	2.9%	2.6%	2.0%	0.0%
Not Specified/Unknown	0.2%	0.2%	0.1%	0.2%	0.0%	0.7%	0.9%
Classification							
Master's Candidate	64.3%	57.8%	59.0%	58.1%	58.3%	61.0%	59.6%
Doctoral Candidate	34.3%	40.4%	38.7%	39.8%	39.1%	36.9%	37.9%
Graduate Other	0.8%	0.9%	1.5%	1.3%	1.6%	1.6%	1.6%
Non-Degree GR	0.5%	0.9%	0.7%	0.7%	1.0%	0.6%	0.9%
Average GRE Score							
Number of Students							
Total *	1041	972	998	975	1005	1048	1035
Verbal	515	522	532	538	536	541	551
Quantitative	605	618	627	635	638	643	651
Analytical Writing	581	589	601	609	599	622	618
Average GMAT Score							
Number of Students							
Total	131	94	114	113	119	217	218
Verbal	588	582	577	577	586	597	603
Quantitative	33	32	32	32	33	34	35
	37	38	38	37	38	38	38
Dual Program Students							
Undergraduate/Graduate	5.0%	3.9%	3.1%	2.7%	3.3%	3.5%	4.2%
Graduate/Graduate	0.9%	1.8%	1.4%	1.2%	1.2%	0.6%	0.9%
Law/Graduate	0.1%	0.1%	0.2%	0.3%	0.5%	0.4%	0.3%
Seminary/Graduate	4.9%	2.3%	1.6%	0.7%	1.1%	0.8%	0.7%
Average Credit Hour Load	7.6	7.3	7.6	7.7	7.7	7.9	7.9

## Notes:

1. Social Work became a separate school in 2005-06.
2. With the exception of the Graduate/Graduate dual programs, students in dual career programs are NOT counted in headcounts as graduate students.
3. Starting in Fall 2009, we began using program count.

\* Total GRE = Verbal + Quantitative

Source: IRT

**Profile of Students in the School of Social Work  
Fall 2004 - Fall 2010**

	2004	2005	2006	2007	2008	2009	2010
School of Social Work Enrollment		43	57	78	84	122	110
Men		7.0%	14.0%	11.5%	11.9%	18.0%	13.6%
Women		93.0%	86.0%	88.5%	88.1%	82.0%	86.4%
African American / Black		7.0%	10.5%	11.5%	9.5%	9.0%	10.9%
Alaskan Native / Amer. Indian		0.0%	0.0%	1.3%	1.2%	2.5%	0.9%
Asian							7.3%
Asian / Pacific Islander		0.0%	1.8%	2.6%	4.8%	5.7%	
Hispanic		0.0%	5.3%	7.7%	9.5%	9.8%	14.5%
Pacific Islander							0.0%
White		90.7%	82.5%	75.6%	71.4%	68.0%	62.7%
Multiracial							3.6%
Other		2.3%	0.0%	1.3%	3.6%	4.9%	
Not Specified/Unknown		0.0%	0.0%	0.0%	0.0%	0.0%	3.6%
Full-Time/Part-Time Status							
Full-Time		88.4%	87.7%	91.0%	91.7%	94.3%	96.4%
Part-Time		11.6%	12.3%	9.0%	8.3%	5.7%	3.6%
Classification							
Master's Candidate		100.0%	100.0%	100.0%	100.0%	100.0%	100.0%
Enrollee Type							
Entering Graduate Student		76.7%	77.2%	56.4%	71.4%	46.7%	40.0%
Continuing Student		23.3%	22.8%	43.6%	28.6%	43.4%	52.7%
Entering Seminary Student						9.8%	7.3%
Dual Program Students							
Seminary/Social Work		65.1%	49.1%	41.0%	39.3%	35.2%	35.5%
Average Credit Hour Load		12.9	12.8	14.0	13.8	13.6	13.7

## Notes:

1. Social Work became a separate school in 2005-06.
2. Starting in Fall 2009, we began using program count.

Source: IRT

**Profile of Law Students  
Fall 2004 - Fall 2010**

	2004	2005	2006	2007	2008	2009	2010
Law School Enrollment	424	432	400	413	423	465	466
Men	53.3%	54.6%	56.8%	60.5%	56.5%	52.9%	50.2%
Women	46.7%	45.4%	43.3%	39.5%	43.5%	47.1%	49.8%
African American / Black	0.5%	1.2%	1.3%	1.0%	1.2%	2.6%	2.4%
Alaskan Native / Amer. Indian	0.2%	1.2%	0.3%	0.0%	0.2%	0.2%	0.4%
Asian							7.3%
Asian / Pacific Islander	4.7%	4.9%	6.3%	5.3%	7.3%	9.0%	
Hispanic	4.2%	3.9%	4.0%	4.1%	3.8%	7.5%	8.4%
Pacific Islander							0.4%
White	88.9%	86.8%	86.0%	87.9%	85.8%	78.9%	77.3%
Multiracial							3.0%
Other	1.4%	2.1%	2.3%	1.7%	1.7%	1.5%	
Not Specified/Unknown	0.0%	0.0%	0.0%	0.0%	0.0%	0.2%	0.9%
Classification							
Juris Doctorate	100.0%	100.0%	99.5%	99.5%	100.0%	100.0%	100.0%
Non-Degree LW	0.0%	0.0%	0.5%	0.5%	0.0%	0.0%	0.0%
Enrollee Type							
Entering Law Student	15.1%	19.0%	17.5%	16.7%	18.9%	18.5%	22.7%
Continuing Student	84.9%	81.0%	82.0%	82.8%	81.1%	81.5%	77.3%
Other	0.0%	0.0%	0.5%	0.5%	0.0%	0.0%	0.0%
Average LSAT Score	159	160	161	160	160	159	160
Number of Students	407	416	363	380	395	375	352
Full-Time/Part-Time Status							
Full-Time	97.6%	97.5%	98.3%	99.3%	98.3%	97.6%	98.1%
Part-Time	2.4%	2.5%	1.8%	0.7%	1.7%	2.4%	1.9%
Dual Program Students							
Law/Graduate	0.2%	0.2%	0.8%	1.0%	1.4%	1.3%	1.1%
Average Credit Hour Load	13.0	13.0	13.3	13.1	13.2	13.3	13.3

Source: IRT

**Profile of Seminary Students  
Fall 2004 - Fall 2010**

	<b>2004</b>	<b>2005</b>	<b>2006</b>	<b>2007</b>	<b>2008</b>	<b>2009</b>	<b>2010</b>
Seminary Enrollment	391	385	377	402	406	399	369
Men	66.0%	67.5%	70.3%	70.4%	69.2%	64.9%	63.4%
Women	34.0%	32.5%	29.7%	29.6%	30.8%	35.1%	36.6%
African American / Black	6.9%	7.5%	9.3%	10.4%	12.8%	12.8%	13.3%
Alaskan Native / Amer. Indian	0.5%	0.5%	0.3%	0.5%	0.5%	0.8%	0.3%
Asian							2.7%
Asian / Pacific Islander	1.8%	1.3%	2.1%	2.7%	1.7%	2.8%	
Hispanic	6.9%	6.5%	8.2%	7.5%	7.9%	6.8%	7.0%
Pacific Islander							0.3%
White	81.8%	83.4%	79.3%	78.1%	76.4%	74.7%	73.2%
Multiracial							3.3%
Other	2.0%	0.8%	0.5%	0.7%	0.7%	2.3%	
Not Specified/Unknown	0.0%	0.0%	0.3%	0.0%	0.0%	0.0%	0.0%
Classification							
Seminary Masters	88.2%	89.4%	88.6%	90.8%	90.4%	91.2%	89.4%
Seminary Doctoral	11.0%	10.1%	11.1%	9.0%	9.4%	8.8%	10.6%
Non-Degree SM	0.8%	0.5%	0.3%	0.2%	0.2%	0.0%	0.0%
Enrollee Type							
Continuing Student	71.1%	73.8%	76.9%	76.6%	76.6%	80.2%	76.7%
Entering Seminary Student	28.9%	26.2%	23.1%	23.4%	23.4%	19.8%	23.3%
Other	0.0%	0.0%	0.0%	0.0%	0.0%	0.0%	0.0%
Full-Time/Part-Time Status							
Full-Time	78.3%	77.4%	81.4%	80.3%	77.1%	76.7%	78.3%
Part-Time	21.7%	22.6%	18.6%	19.7%	22.9%	23.3%	21.7%
Dual Program Students							
Seminary/Graduate	16.1%	7.0%	5.0%	2.2%	3.4%	3.0%	2.7%
Seminary/Social Work	0.0%	7.3%	7.4%	8.0%	8.1%	10.8%	10.6%
Undergraduate/Seminary	0.5%	0.5%	0.3%	0.0%	0.0%	0.0%	0.0%
Average Credit Hour Load	9.6	9.5	9.5	9.3	9.2	9.3	9.3

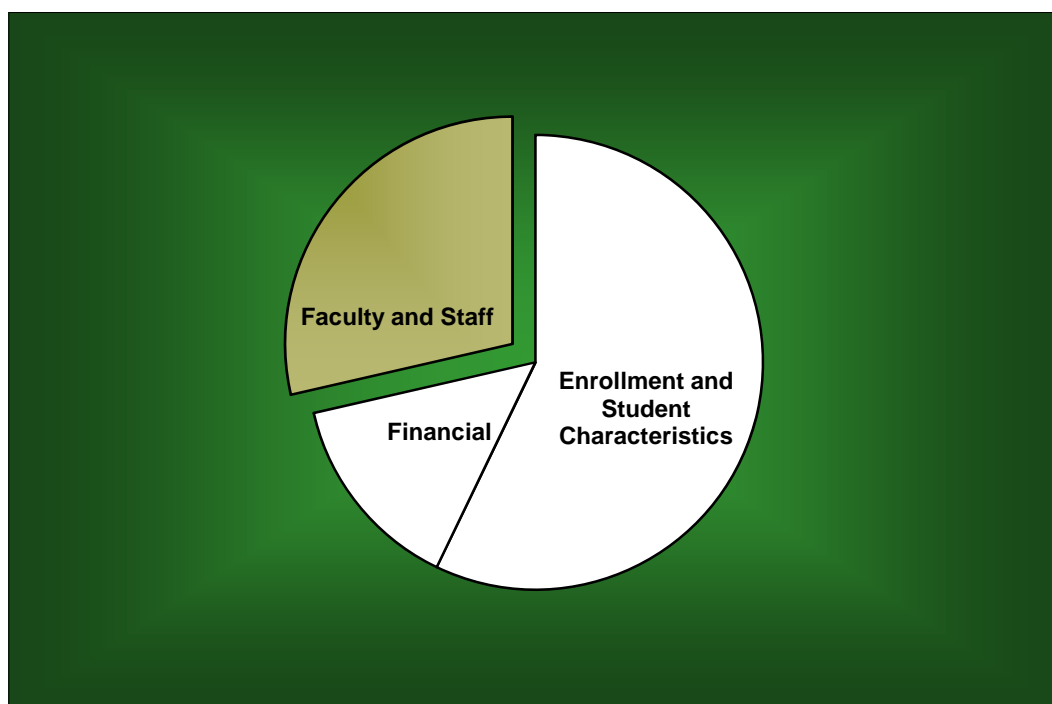
Notes:

1. Students classified as Undergraduate/Seminary are counted as Undergraduates and are included in this table for informational purposes only.
2. Starting in Fall 2009, we began using program count.

Source: IRT

## ***Faculty and Staff***

---



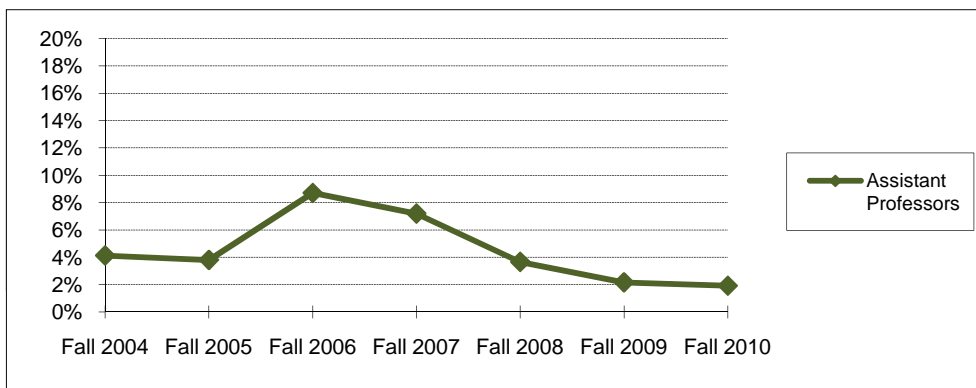
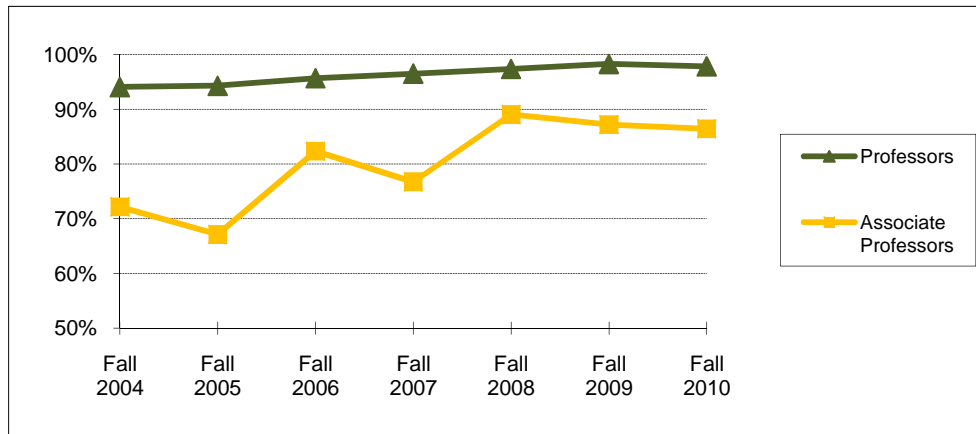
**Full-Time Faculty Positions (AAUP Definition)  
Fall 2004 - Fall 2010**

Rank	Fall 2004		Fall 2005		Fall 2006		Fall 2007		Fall 2008		Fall 2009		Fall 2010	
	Male	Female	Male	Female	Male	Female	Male	Female	Male	Female	Male	Female	Male	Female
<b>Professors:</b>														
<b>Number</b>	205	32	197	32	198	35	195	36	195	36	198	39	200	34
<b>Tenured</b>	191	32	186	30	188	35	187	36	189	36	195	38	196	33
<b>Associate Prof.:</b>														
<b>Number</b>	108	43	108	44	124	46	131	54	139	62	147	64	144	70
<b>Tenured</b>	74	35	68	34	100	40	100	42	123	56	129	55	127	58
<b>Assistant Prof:</b>														
<b>Number</b>	102	68	98	60	84	54	96	57	83	54	81	58	91	66
<b>Tenured</b>	3	4	2	4	5	7	4	7	2	3	1	2	1	2
<b>Instructors:</b>														
<b>Number</b>	0	1	0	1	0	1	0	1	0	1	0	1	0	1
<b>Tenured</b>	0	1	0	1	0	1	0	1	0	1	0	1	0	1
<b>Senior Lecturers:</b>														
<b>Number</b>	21	37	21	33	21	33	27	38	32	52	44	65	48	67
<b>Lecturers:</b>														
<b>Number</b>	64	89	70	91	75	96	78	100	70	99	67	95	61	88
<b>Total Number</b>	500	270	494	261	502	265	527	286	519	304	537	322	544	326
<b>Total Tenured</b>	268	72	256	69	293	83	291	86	314	96	325	96	324	94

**Highest Degree Earned by Full-Time Faculty  
Fall 2004 - Fall 2010**

	Fall 2004	Fall 2005	Fall 2006	Fall 2007	Fall 2008	Fall 2009	Fall 2010
<b>Associate's</b>	1	0	0	0	0	0	0
<b>Bachelor's</b>	2	6	5	3	2	2	4
<b>Master's</b>	213	200	180	190	201	199	196
<b>Doctoral</b>	572	566	591	631	633	673	690
<b>Professional</b>	26	24	28	27	27	29	26
<b>Total</b>	814	796	804	851	863	903	916

**Percentage of Full-Time Faculty with Tenure (AAUP Definition)  
Fall 2004 - Fall 2010**



	Fall 2004	Fall 2005	Fall 2006	Fall 2007	Fall 2008	Fall 2009	Fall 2010
<b>Professors</b>	94.1%	94.3%	95.7%	96.5%	97.4%	98.3%	97.9%
<b>Associate Professors</b>	72.2%	67.1%	82.4%	76.8%	89.1%	87.2%	86.4%
<b>Assistant Professors</b>	4.1%	3.8%	8.7%	7.2%	3.6%	2.2%	1.9%
<b>Instructors</b>		100.0%	100.0%	100.0%	100.0%	100.0%	100.0%
<b>All Faculty</b>	44.2%	43.0%	49.0%	46.4%	49.8%	49.0%	48.0%



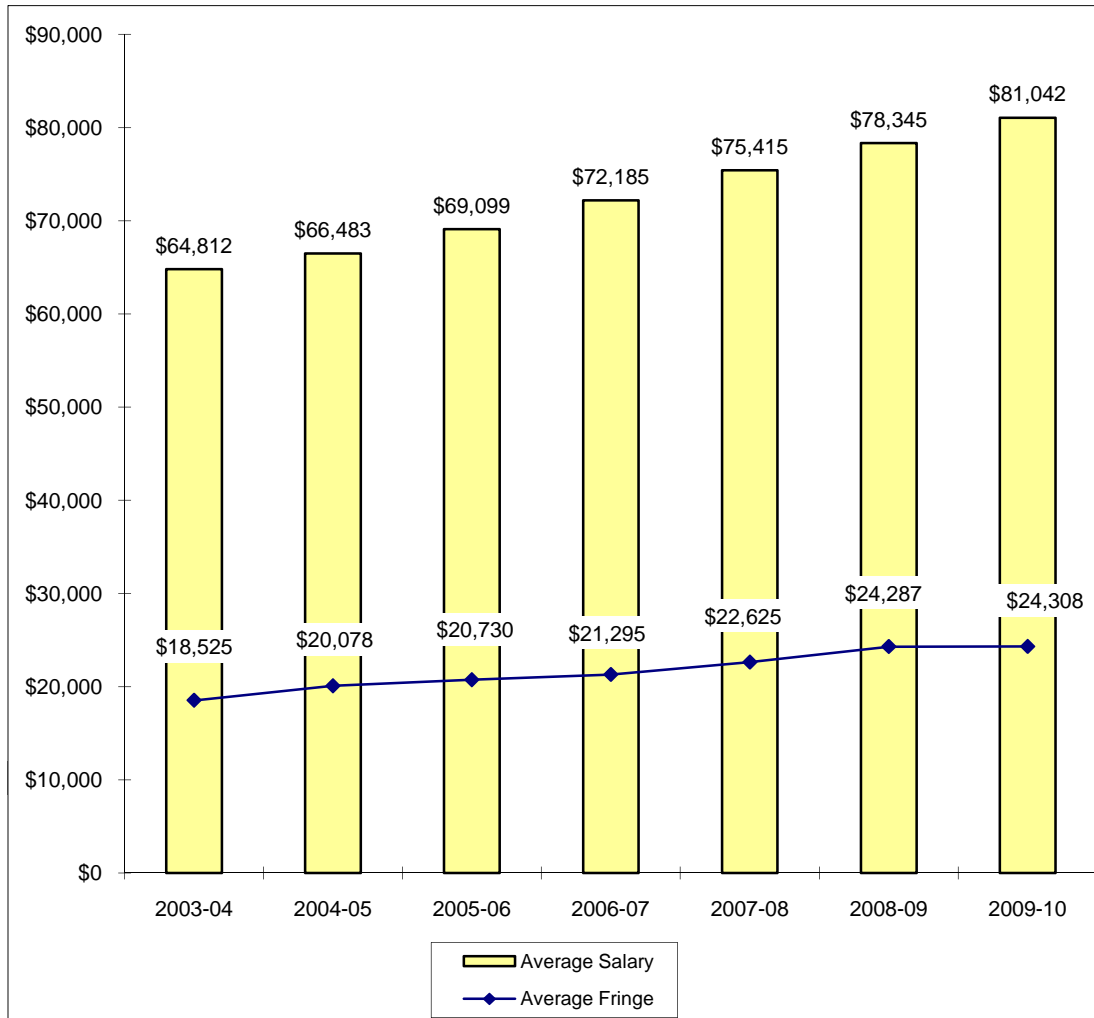
**Average Salaries of Full-Time Instructional Faculty  
on Academic Year Contracts (AAUP Definition)  
Fall 2004 - Fall 2010**

Rank	Fall 2004		Fall 2005		Fall 2006		Fall 2007	
	Number in Rank	Average Salary	Number in Rank	Average Salary	Number in Rank	Average Salary	Number in Rank	Average Salary
Professor	237	\$87,091	229	\$89,219	233	\$92,385	231	\$97,241
Associate Professor	151	\$67,501	152	\$68,432	170	\$70,179	185	\$74,681
Assistant Professor	170	\$58,675	158	\$52,385	138	\$67,143	153	\$69,536
Instructor	1	*	1	*	1	*	1	*
Senior Lecturer	58	\$47,719	54	\$48,728	54	\$50,950	65	\$52,175
Lecturer	153	\$41,055	161	\$42,388	171	\$43,710	178	\$46,765
All Ranks	770	\$64,812	755	\$66,483	767	\$69,099	813	\$72,185
Average Fringe		\$18,525		\$20,078		\$20,730		\$21,295
Fringe as a Percentage of Average Salary		28.6%		30.2%		30.0%		29.5%
Percentage Increase in Average Salary for Continuing Faculty		0.2%		3.4%		5.0%		6.0%

Rank	Fall 2008		Fall 2009		Fall 2010	
	Number in Rank	Average Salary	Number in Rank	Average Salary	Number in Rank	Average Salary
Professor	231	\$102,398	237	\$106,504	234	\$111,145
Associate Professor	201	\$78,043	211	\$81,618	214	\$83,620
Assistant Professor	137	\$70,562	139	\$73,872	157	\$74,581
Instructor	1	*	1	*	1	*
Senior Lecturer	84	\$55,668	109	\$57,263	115	\$59,034
Lecturer	169	\$49,274	162	\$51,032	149	\$53,574
All Ranks	823	\$75,415	859	\$78,345	870	\$81,042
Average Fringe		\$22,625		\$24,287		\$24,308
Fringe as a Percentage of Average Salary		30.0%		31.0%		30.0%
Percentage Increase in Average Salary for Continuing Faculty		5.8%		4.6%		3.3%

\*Data not displayed for five or fewer faculty.

**Average Compensation of Full-Time Instructional Faculty  
on Academic Year Contracts  
2003-04 through 2009-10**

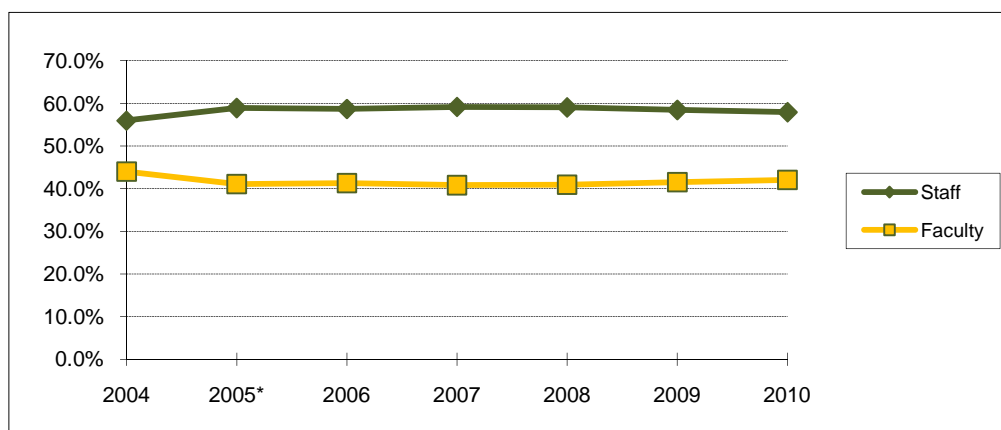


### Institutional Staff Fall 2004 - Fall 2010

	Fall	2004	2005*	2006	2007	2008	2009	2010
<b>Faculty:</b>								
Full-Time		834	755	767	813	823	861	872
Part-Time		113	155	161	159	171	189	214
<b>Executive/Administrative:</b>								
Full-Time		188	221	251	275	285	313	347
Part-Time		2	1	1	1	2	1	3
<b>Other Professional:</b>								
Full-Time		456	500	476	532	566	580	581
Part-Time		18	18	16	18	22	17	15
<b>Technical/Paraprofessional:</b>								
Full-Time		40	105	139	143	128	132	128
Part-Time		3	17	18	18	17	17	12
<b>Clerical/Secretarial:</b>								
Full-Time		396	335	332	325	323	335	327
Part-Time		39	33	27	33	27	22	23
<b>Skilled Crafts:</b>								
Full-Time		6	7	7	7	7	7	6
Part-Time		0	1	1	0	0	0	0
<b>Service/Maintenance:</b>								
Full-Time		49	58	42	47	49	47	49
Part-Time		7	10	10	10	8	8	6
<b>Total:</b>								
Full-Time		1969	1981	2014	2142	2181	2275	2310
Part-Time		182	235	234	239	247	254	273
<b>Grand Total</b>		<b>2151</b>	<b>2216</b>	<b>2248</b>	<b>2381</b>	<b>2428</b>	<b>2529</b>	<b>2583</b>

\*2005 shifts in categorization of employees due to internal reclassification and IPEDS reporting changes.

### Percentage of Institutional Staff Fall 2004 - Fall 2010



	Fall	2004	2005*	2006	2007	2008	2009	2010
<b>Staff</b>		56.0%	58.9%	58.7%	59.2%	59.1%	58.5%	58.0%
<b>Faculty</b>		44.0%	41.1%	41.3%	40.8%	40.9%	41.5%	42.0%

**Full-Time Faculty by Religious Affiliation  
Fall 2004 - Fall 2010**

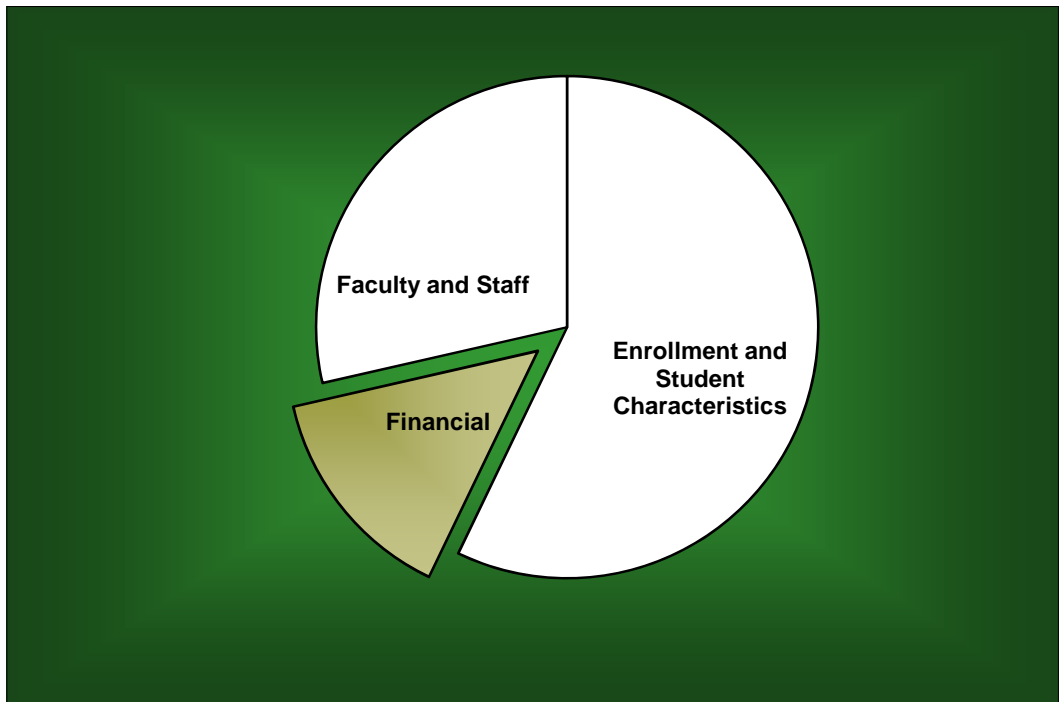
Fall	2004	2005	2006	2007	2008	2009	2010
Assembly of God	1	1	1	2	2	4	3
Baptist	390	375	368	379	381	393	392
Catholic	78	79	81	87	91	99	105
Church of Christ	20	18	22	23	24	26	27
Disciples of Christ	14	11	11	12	11	11	11
Episcopalian	52	54	56	60	60	60	62
Lutheran	46	47	46	51	52	55	55
Methodist	79	78	75	78	77	79	78
Non-/Inter-Denominational	21	24	24	28	18	21	25
Presbyterian	51	49	54	59	56	60	62
Other / Unspecified	62	60	66	72	91	95	96
<b>Total</b>	<b>814</b>	<b>796</b>	<b>804</b>	<b>851</b>	<b>863</b>	<b>903</b>	<b>916</b>

**Full-Time Staff by Religious Affiliation  
Fall 2004 - Fall 2010**

Fall	2004	2005	2006	2007	2008	2009	2010
Assembly of God	10	9	8	9	8	7	6
Baptist	592	618	612	646	645	683	719
Catholic	117	108	117	128	138	146	138
Church of Christ	33	35	36	36	36	42	43
Disciples of Christ	19	18	16	13	12	12	10
Episcopalian	30	26	21	25	30	33	35
Lutheran	35	35	40	40	46	46	45
Methodist	109	110	117	124	128	126	123
Non-/Inter-Denominational	64	63	81	98	99	103	101
Presbyterian	22	27	33	36	38	36	34
Other / Unspecified	95	96	98	104	108	105	109
<b>Total</b>	<b>1126</b>	<b>1145</b>	<b>1179</b>	<b>1259</b>	<b>1288</b>	<b>1339</b>	<b>1363</b>

# ***Financial***

---



**Undergraduate Tuition and Other Semester Charges  
2004-05 through 2010-11**

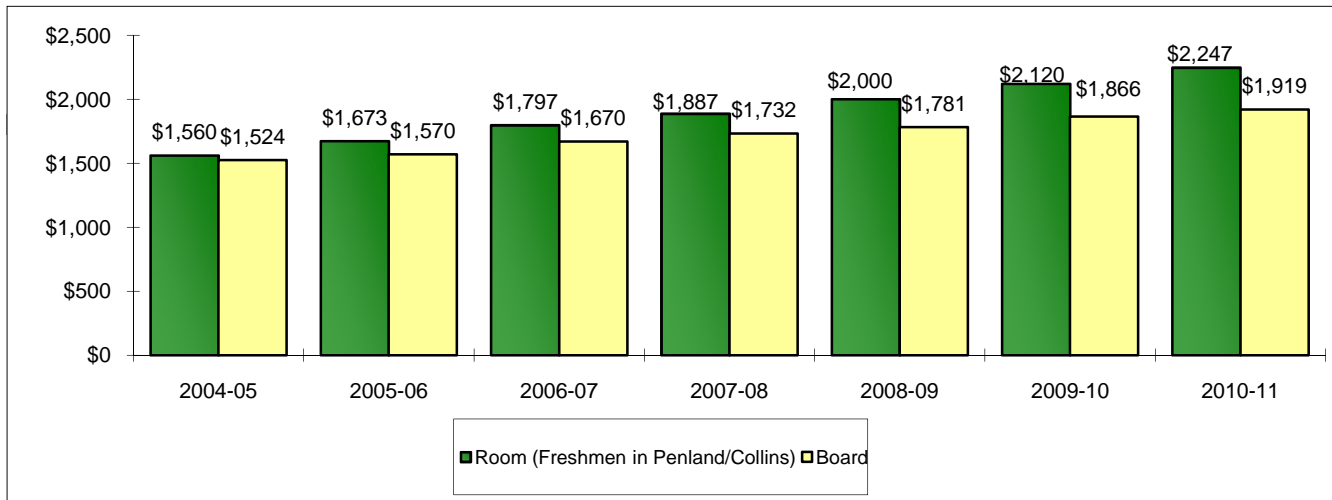
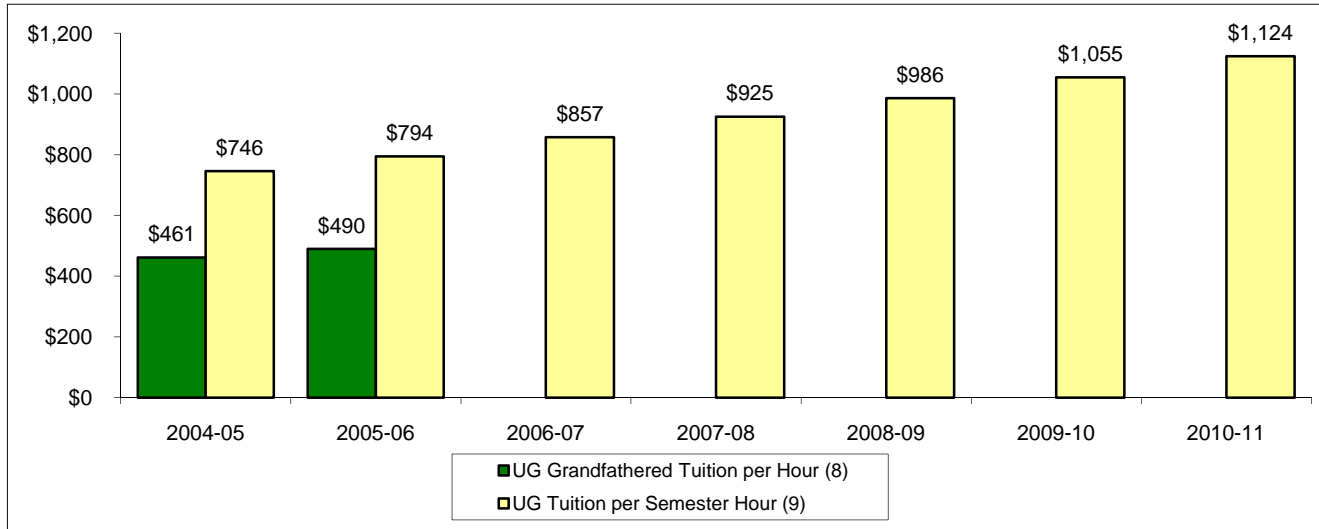
	2004-05	2005-06	2006-07	2007-08	2008-09	2009-10	2010-11
UG Grandfathered Tuition per Hour (8)	\$461.00	\$490.00					
Increase from Prior Year	6.7%	6.3%					
UG Tuition per Semester Hour (9)	\$746.00	\$794.00	\$857.00	\$925.00	\$986.00	\$1,055.00	\$1,124.00
Increase from Prior Year	6.9%	6.4%	7.9%	7.9%	6.6%	7.0%	6.5%
UG Flat Tuition Semester Rate (7)	\$ 8,950	\$ 9,525	\$10,287	\$ 11,110	\$11,832	\$ 12,660	\$ 13,483
Increase from Prior Year	6.9%	6.4%	8.0%	8.0%	6.5%	7.0%	6.5%
Application Fee (UG)	35.00	50.00	50.00	50.00	50.00	50.00	50.00
Applied Music Fee(1)	142.00	151.00	163.00	175.00	186.00	199.00	212.00
Change-of-Course Fee	20.00	20.00	20.00	20.00	20.00	20.00	2.00
Chapel-Forum Fee	50.00	55.00	55.00	55.00	55.00	60.00	60.00
Credit by Baylor Exam Fee	230.00	245.00	265.00	286.00	305.00	326.00	347.00
General Student Fee	745.00	800.00	1,070.00	1,135.00	1,210.00	1,295.00	1,379.00
Enrollment Deposit (2)	100.00	100.00	100.00	100.00	100.00	300.00	300.00
Lab/Course Fees (3)	50.00	50.00	50.00	50.00	50.00	50.00	50.00
Late Registration Fee (4)	30.00	50.00	50.00	50.00	75.00	50.00	75.00
Technology Fee (10)	195.00	210.00					
Vehicle Registration Fee (5)	175.00	175.00	175.00	175.00	200.00	225.00	225.00
Room (Freshmen in Penland/Collins)	1,560.00	1,673.00	1,797.00	1,887.00	2,000.00	2,120.00	2,247.00
Increase from Prior Year	6.6%	7.2%	7.4%	5.0%	6.0%	6.0%	6.0%
Board (6)	1,524.16	1,569.63	1,669.63	1,732.41	1,781.38	1,865.56	1,918.60
Increase from Prior Year	3.2%	3.0%	6.4%	3.8%	2.8%	4.7%	2.8%

Increase in Semester Charges from 2004-05 to 2010-11:	Tuition, per semester hour	50.7%
	Room	44.0%
	Board	25.9%

## Notes:

- (1) Supplemental charge per semester for one 30-minute lesson per week.
- (2) The Enrollment Deposit is paid to assure enrollment place and is applied on the student's first semester bill. Beginning in 2009-10, the fee also serves as the application for on-campus housing.
- (3) Minimum lab fee is noted; some courses may be higher.
- (4) Minimum charges are noted; charges vary.
- (5) Annual automobile fee (September - August).
- (6) The 2004-05 and 2005-06 Board rate reflects the "Classic -16 Meal Plan" but meal plan does not include BearBucks. The 2006-07 Board rate reflects the "Classic - 16 Meal Plan" + \$100 Dining Dollars. The Board rates for 2007-08 and later reflect "The Works - 16 Meal Plan" + \$100 Dining Dollars.
- (7) Beginning in 2002-03, a flat tuition rate was instituted for new undergraduate students taking 12 or more hours per semester (Fall and Spring).
- (8) Beginning in 2002-03, the tuition per semester hour rate is applicable for students who were enrolled at Baylor prior to June 1, 2002 (grandfathered rate). The grandfathered tuition rate was discontinued after the 2005-06 fiscal year.
- (9) Tuition per semester hour for new students taking less than 12 hours.
- (10) Technology fee is now combined with General Student Fee.

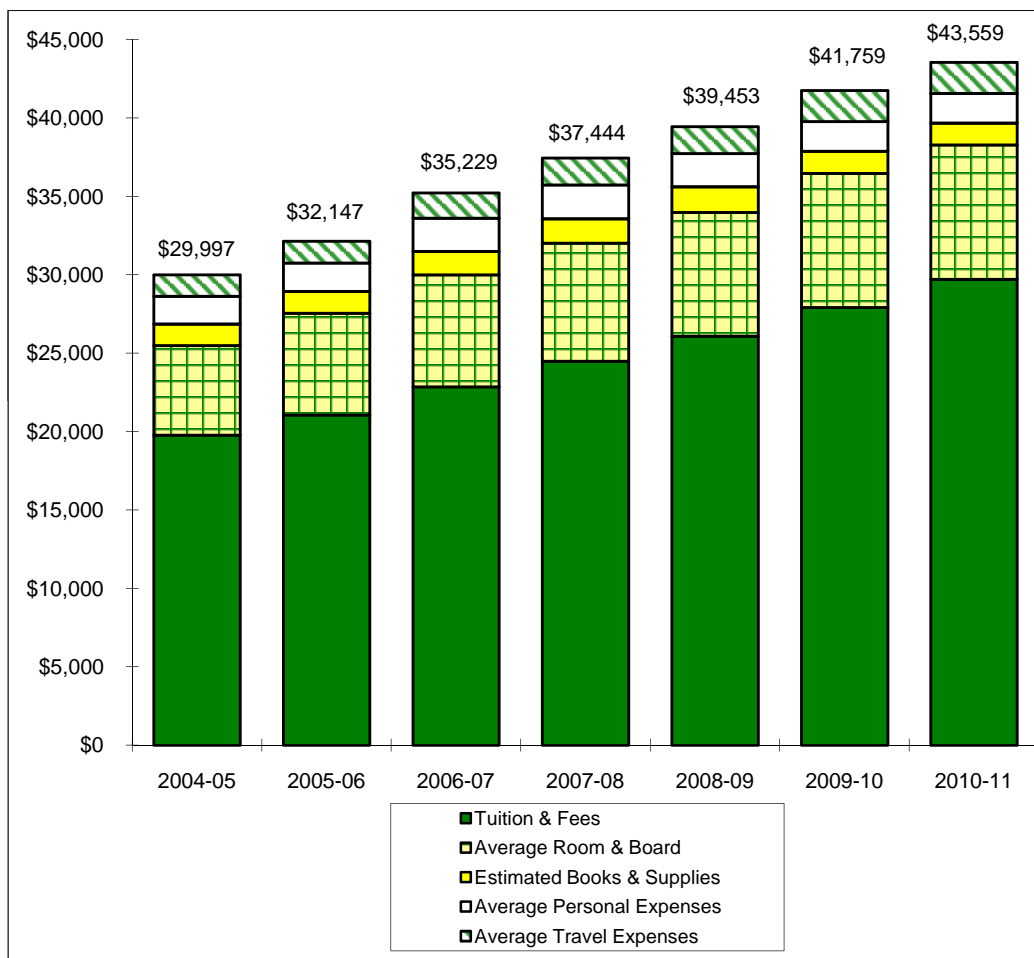
### Tuition, Room and Board Charges 2004-05 through 2010-11



See notes on page 48.

### Annual Undergraduate Student Cost Profile 2004-05 through 2010-11

	2004-05	2005-06	2006-07	2007-08	2008-09	2009-10	2010-11
Tuition & Fees	\$19,780	\$21,070	\$22,869	\$24,490	\$26,084	\$27,910	\$29,724
Average Room & Board	5,713	6,485	7,125	7,526	7,895	8,569	8,555
Estimated Books & Supplies	1,356	1,382	1,502	1,548	1,634	1,398	1,398
Average Personal Expenses	1,778	1,813	2,108	2,172	2,120	1,890	1,890
Average Travel Expenses	1,370	1,397	1,625	1,708	1,720	1,992	1,992
Average Total Cost	\$29,997	\$32,147	\$35,229	\$37,444	\$39,453	\$41,759	\$43,559
Increase from Prior Year	5.2%	7.2%	9.6%	6.3%	5.4%	5.8%	4.3%





**Operating Funds  
2003-04 through 2009-10**

**Sources of Revenues**

	2003-04	2004-05	2005-06	2006-07	2007-08	2008-09	2009-2010
Tuition & Fees	\$228,672,157	\$253,947,979	\$286,798,199	\$313,899,972	\$342,097,694	\$373,028,202	\$399,350,958
Gifts/Private Grants	3,957,986	4,106,405	4,667,051	4,954,597	6,439,884	5,492,860	5,499,890
BGCT Appropriation	3,832,014	3,721,275	3,517,856	3,504,658	3,439,127	3,336,082	2,940,461
Endowment Income	21,035,555	22,429,350	22,661,361	23,424,913	23,663,760	24,802,676	24,657,012
Investment Income	635,674	1,333,628	3,913,218	6,053,815	4,993,909	3,213,098	2,994,725
Other Sources	13,900,817	15,406,112	14,707,559	17,042,155	17,791,539	17,706,402	17,827,038
Auxiliary Enterprises	37,156,315	40,774,330	45,675,394	46,691,476	51,684,175	59,229,289	65,559,816
<b>Total Revenues</b>	<b>\$309,190,518</b>	<b>\$341,719,079</b>	<b>\$381,940,638</b>	<b>\$415,571,586</b>	<b>\$450,110,088</b>	<b>\$486,808,609</b>	<b>\$518,829,900</b>

**Sources of Revenues as a Percentage of Total Revenues**

	2003-04	2004-05	2005-06	2006-07	2007-08	2008-09	2009-2010
Tuition & Fees	74.0%	74.3%	75.0%	75.4%	76.1%	76.7%	77.1%
Gifts/Private Grants	1.3%	1.2%	1.2%	1.2%	1.4%	1.1%	1.1%
BGCT Appropriation	1.2%	1.1%	0.9%	0.8%	0.8%	0.7%	0.6%
Endowment Income	6.9%	6.6%	5.9%	5.6%	5.3%	5.1%	4.8%
Investment Income	0.2%	0.4%	1.0%	1.5%	1.1%	0.7%	0.6%
Other Sources	4.5%	4.5%	3.9%	4.1%	4.0%	3.6%	3.4%
Auxiliary Enterprises	12.0%	11.9%	12.0%	11.1%	11.4%	12.2%	12.6%
<b>Total Revenues</b>	<b>100.0%</b>	<b>100.0%</b>	<b>100.0%</b>	<b>100.0%</b>	<b>100.0%</b>	<b>100.0%</b>	<b>100.0%</b>

Note: The 2007-08 amount for Other Sources was corrected in Fall 2009.

**Operating Funds (Continued)  
2003-04 through 2009-10**

**Expenditures by Function & Transfers**

	<b>2003-04</b>	<b>2004-05</b>	<b>2005-06</b>	<b>2006-07</b>	<b>2007-08</b>	<b>2008-09</b>	<b>2009-10</b>
Instruction	\$109,586,442	\$113,783,712	\$114,841,749	\$128,567,485	\$136,841,541	\$147,664,892	\$156,929,981
Acad Support/Research/PS	24,957,815	25,637,473	26,511,262	28,969,003	31,042,840	34,406,883	36,252,886
Student Services	15,177,946	19,276,167	19,926,881	20,460,020	22,113,403	25,155,946	26,324,631
Plant Operation/Maintenance	33,373,695	36,228,820	39,746,168	50,405,094	44,584,892	41,588,549	44,332,209
Institutional Support	37,244,481	37,977,656	42,191,169	41,187,651	43,132,354	49,131,930	50,914,058
Scholarships & Fellowships	47,065,860	58,837,752	72,429,465	78,291,693	92,184,669	105,128,732	121,019,447
Auxiliary Enterprises	43,784,647	45,499,135	51,076,247	53,951,060	64,132,500	67,659,956	72,367,741
Discretionary Transfers	(2,018,647)	4,469,901	15,206,432	13,692,811	16,040,213	16,042,645	10,667,052
<b>Total Exp. &amp; Transfers</b>	<b>309,172,239</b>	<b>341,710,616</b>	<b>381,929,373</b>	<b>415,524,817</b>	<b>450,072,412</b>	<b>486,779,533</b>	<b>518,808,005</b>
<b>Excess Revenues</b>	<b>\$18,279</b>	<b>\$8,463</b>	<b>\$11,265</b>	<b>\$46,769</b>	<b>\$37,676</b>	<b>\$29,076</b>	<b>\$21,895</b>

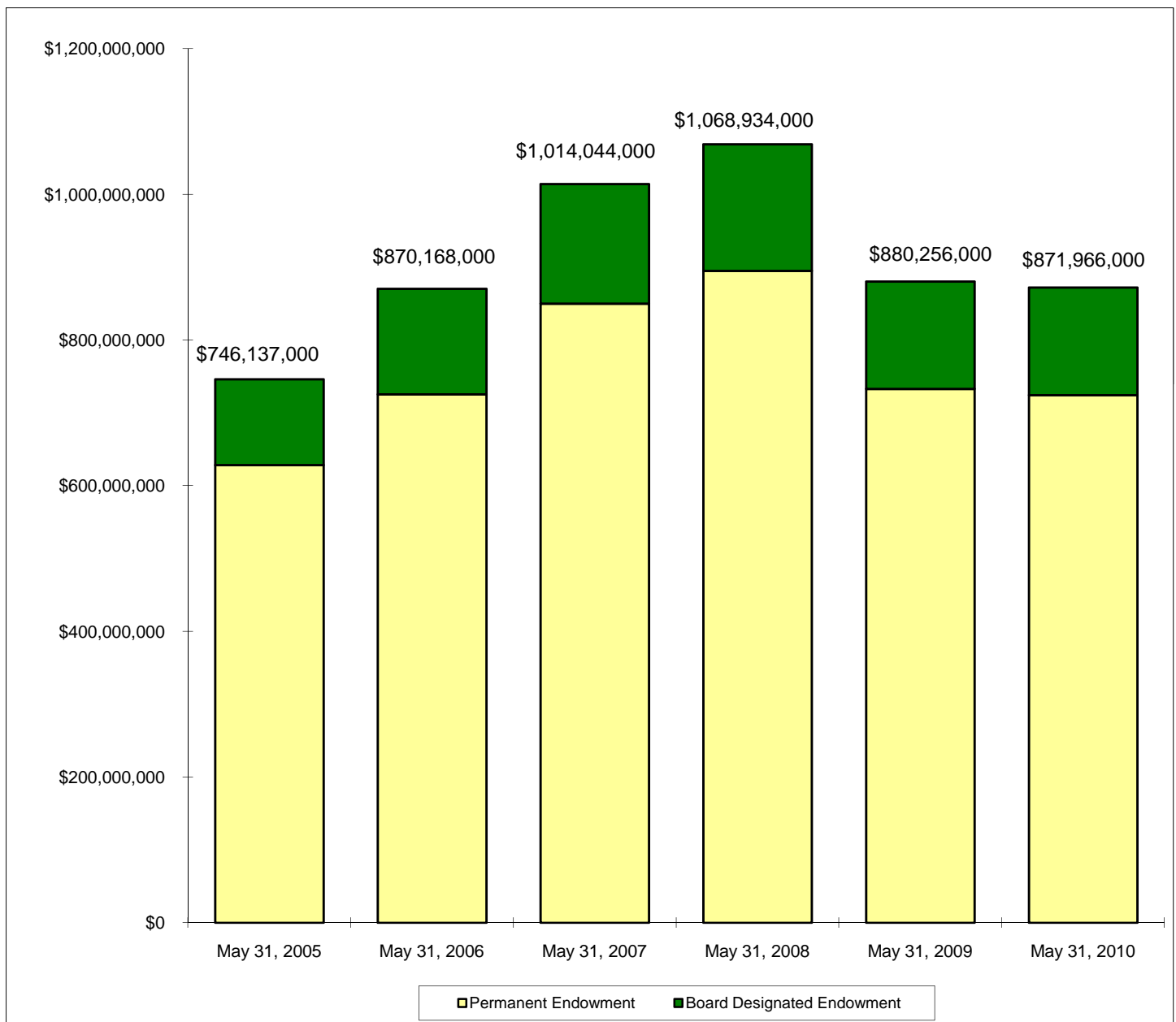
**Percentage of Total Expenditures & Transfers**

	<b>2003-04</b>	<b>2004-05</b>	<b>2005-06</b>	<b>2006-07</b>	<b>2007-08</b>	<b>2008-09</b>	<b>2009-10</b>
Instruction	35.4%	33.3%	30.1%	30.9%	30.4%	30.3%	30.2%
Gifts/Private Grants	8.1%	7.5%	6.9%	7.0%	6.9%	7.1%	7.0%
Student Services	4.9%	5.6%	5.2%	4.9%	4.9%	5.2%	5.1%
Plant Operation/Maintenance	10.8%	10.6%	10.4%	12.1%	9.9%	8.5%	8.5%
Institutional Support	12.0%	11.1%	11.0%	9.9%	9.6%	10.1%	9.8%
Scholarships & Fellowships	15.2%	17.2%	19.0%	18.8%	20.5%	21.6%	23.3%
Auxiliary Enterprises	14.2%	13.3%	13.4%	13.0%	14.2%	13.9%	13.9%
Discretionary Transfers	-0.7%	1.3%	4.0%	3.3%	3.6%	3.3%	2.1%
<b>Total Exp. &amp; Transfers</b>	<b>100.0%</b>	<b>100.0%</b>	<b>100.0%</b>	<b>100.0%</b>	<b>100.0%</b>	<b>100.0%</b>	<b>100.0%</b>

Note: The 2007-08 amounts were corrected in Fall 2009.

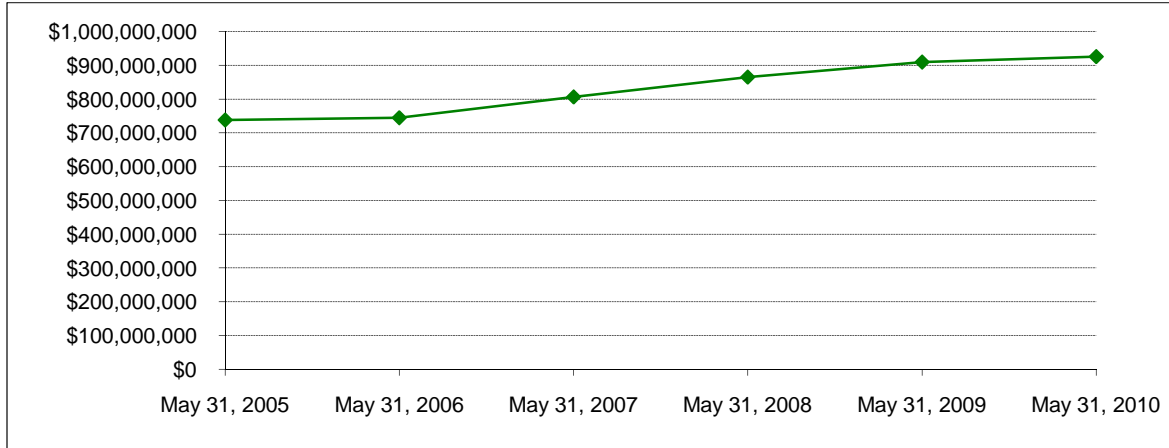
**Endowment Fund Balance - Market Value  
May 31, 2005 through May 31, 2010**

	May 31, 2005	May 31, 2006	May 31, 2007	May 31, 2008	May 31, 2009	May 31, 2010
Permanent Endowment	\$628,503,000	\$725,266,000	\$849,855,000	\$894,844,000	\$733,005,000	\$724,217,000
Board Designated Endowment	117,634,000	144,902,000	164,189,000	174,090,000	147,251,000	147,749,000
<b>Total Endowment</b>	<b>\$746,137,000</b>	<b>\$870,168,000</b>	<b>\$1,014,044,000</b>	<b>\$1,068,934,000</b>	<b>\$880,256,000</b>	<b>\$871,966,000</b>
Permanent Endowment	84.2%	83.3%	83.8%	83.7%	83.3%	83.1%
Board Designated Endowment	15.8%	16.7%	16.2%	16.3%	16.7%	16.9%
<b>Total Endowment</b>	<b>100.0%</b>	<b>100.0%</b>	<b>100.0%</b>	<b>100.0%</b>	<b>100.0%</b>	<b>100.0%</b>



**Property, Plant and Equipment\***  
**May 31, 2005 through May 31, 2010**

Property, Plant & Equipment	May 31, 2005	May 31, 2006	May 31, 2007	May 31, 2008	May 31, 2009	May 31, 2010
	\$738,186,000	\$745,063,000	\$806,781,000	\$865,139,000	\$909,995,000	\$926,344,000



\*Does not reflect the impact of accumulated depreciation.

\*The May 31, 2006 figure for Property, Plant & Equipment was changed in 2007 from \$744,986,000 to \$745,063,000.

**Assets**  
**May 31, 2005 through May 31, 2010**

	May 31, 2005	May 31, 2006	May 31, 2007	May 31, 2008	May 31, 2009	May 31, 2010
Net Assets	\$1,059,904,000	\$1,230,176,000	\$1,408,848,000	\$1,439,335,000	\$1,241,695,000	\$1,236,166,000
Total Assets	\$1,426,295,000	\$1,638,403,000	\$1,831,511,000	\$1,863,687,000	\$1,715,749,000	\$1,687,954,000

