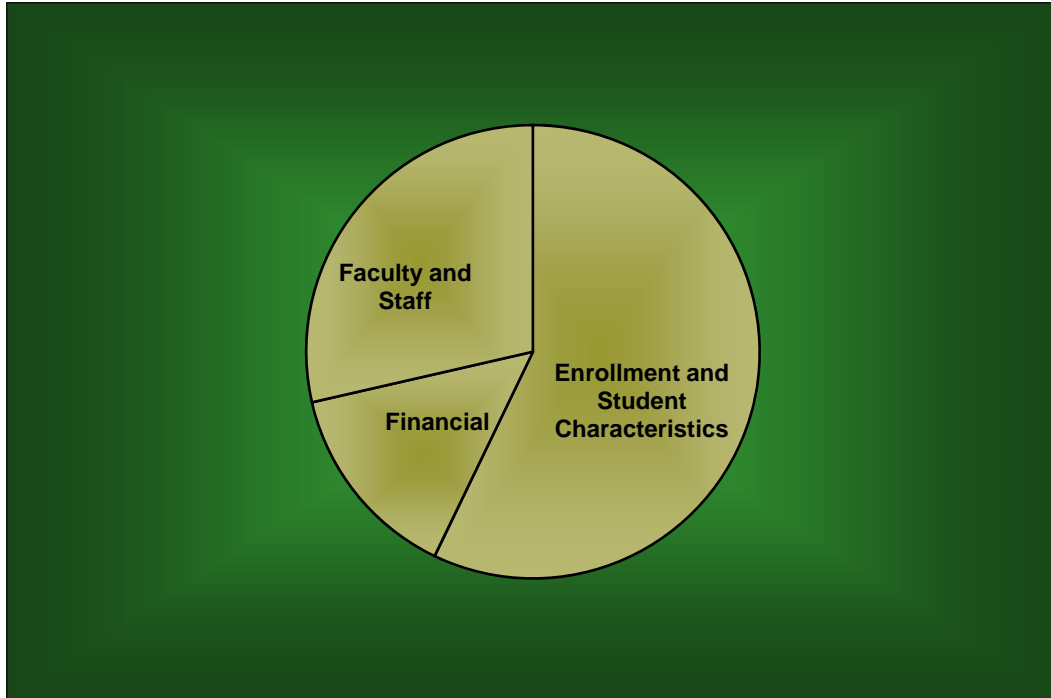


# **BAYLOR TRENDS**

---



**Fall 2003 - Fall 2009**

---

**Volume XXI**

---

Prepared by the Office of Institutional Research and Testing, Fall 2009

<http://www.baylor.edu/irt/>

# Table of Contents

---

	Page
<b>ENROLLMENT AND STUDENT CHARACTERISTICS</b>	
<i>New Freshman Applications, Acceptances and Enrollment</i> .....	1
<i>Transfer Applications, Acceptances and Enrollment</i> .....	1
<i>New Freshman Applications and Enrollment by Gender</i> .....	2
<i>New Freshman and Transfer Student Enrollment</i> .....	3
<i>Headcount Enrollment by Classification</i> .....	4
<i>Enrollment</i> .....	5
<i>Enrollment by Gender, Excluding Military Programs</i> .....	6
<i>Enrollment by Religious Affiliation, Excluding Military Programs</i> .....	7
<i>Baptist Percentage, Excluding Military Programs</i> .....	7
<i>Enrollment by Racial/Ethnic Group</i> .....	8
<i>Racial/Ethnic Minority Percentage</i> .....	8
<i>Enrollment by Race and Gender</i> .....	9
<i>Program Enrollment by Unit, Level, and Race</i> .....	10
<i>Program Enrollment by Unit, Level, and Gender</i> .....	15
<i>National Merit Scholars</i> .....	18
<i>Average SAT Scores for First-Time Freshmen</i> .....	19
<i>Average ACT Scores for First-Time Freshmen</i> .....	19
<i>Leading Texas Counties of Origin</i> .....	20
<i>Leading States of Origin</i> .....	20
<i>Percentage from Top Four Texas Counties</i> .....	21
<i>Students from Texas by County</i> .....	21
<i>Texas Enrollment by County</i> .....	22
<i>Enrollment by State</i> .....	23
<i>Enrollment by State – Map</i> .....	24
<i>Countries Represented by Nonresident Aliens</i> .....	25
<i>Headcount Enrollment by Unit</i> .....	26
<i>Program Enrollment by Unit</i> .....	26
<i>Headcount Enrollment Percentage by Unit</i> .....	27
<i>Student Credit Hours by Unit, Excluding Military Programs</i> .....	28
<i>Retention of First-Time Freshman Classes</i> .....	29
<i>Distribution of Degrees</i> .....	30
<i>Summary of Degrees Awarded</i> .....	31
<i>Degree Programs</i> .....	32
<i>Profile of First-Time Freshmen</i> .....	34
<i>Profile of Undergraduate Transfers</i> .....	35
<i>Profile of Undergraduate Students</i> .....	36
<i>Profile of Students in the Graduate School</i> .....	37
<i>Profile of Students in the School of Social Work</i> .....	38
<i>Profile of Law Students</i> .....	39
<i>Profile of Seminary Students</i> .....	40

**FACULTY AND STAFF**

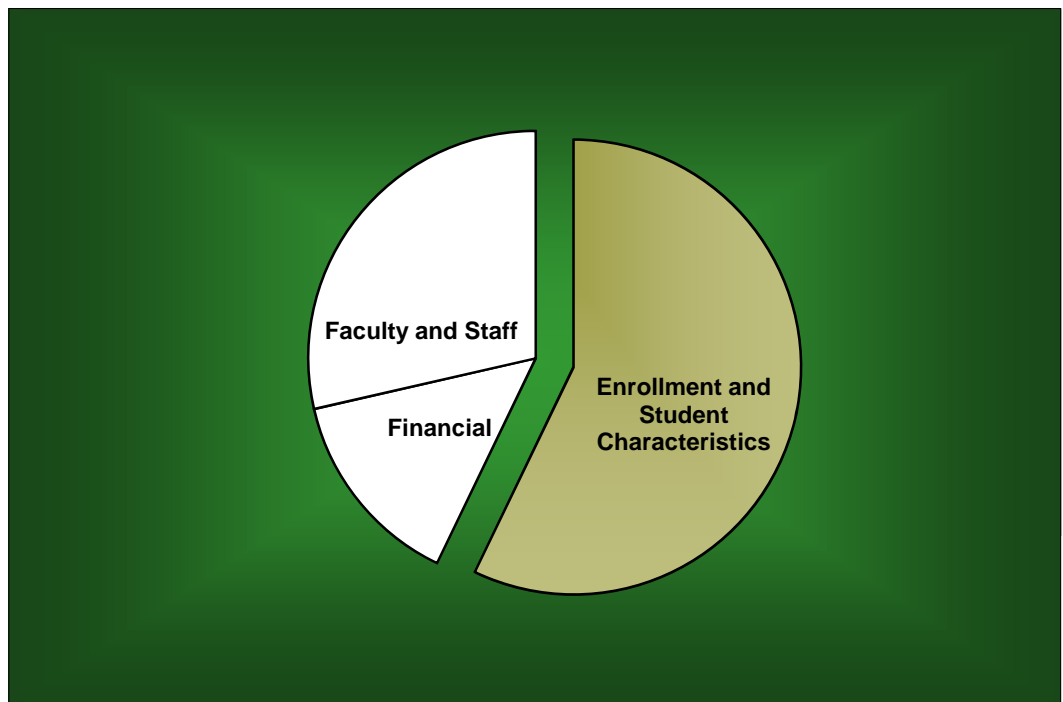
<i>Full-Time Faculty Positions</i> .....	41
<i>Highest Degree Earned by Full-Time Faculty</i> .....	41
<i>Percentage of Full-Time Faculty with Tenure</i> .....	42
<i>Average Salaries of Full-Time Instructional Faculty on Academic Year Contracts</i> .....	43
<i>Average Compensation of Full-Time Instructional Faculty on Academic Year Contracts</i> .....	44
<i>Institutional Staff</i> .....	45
<i>Percentage of Institutional Staff</i> .....	45
<i>Full-Time Faculty by Religious Affiliation</i> .....	46
<i>Full-Time Staff by Religious Affiliation</i> .....	46

**FINANCIAL**

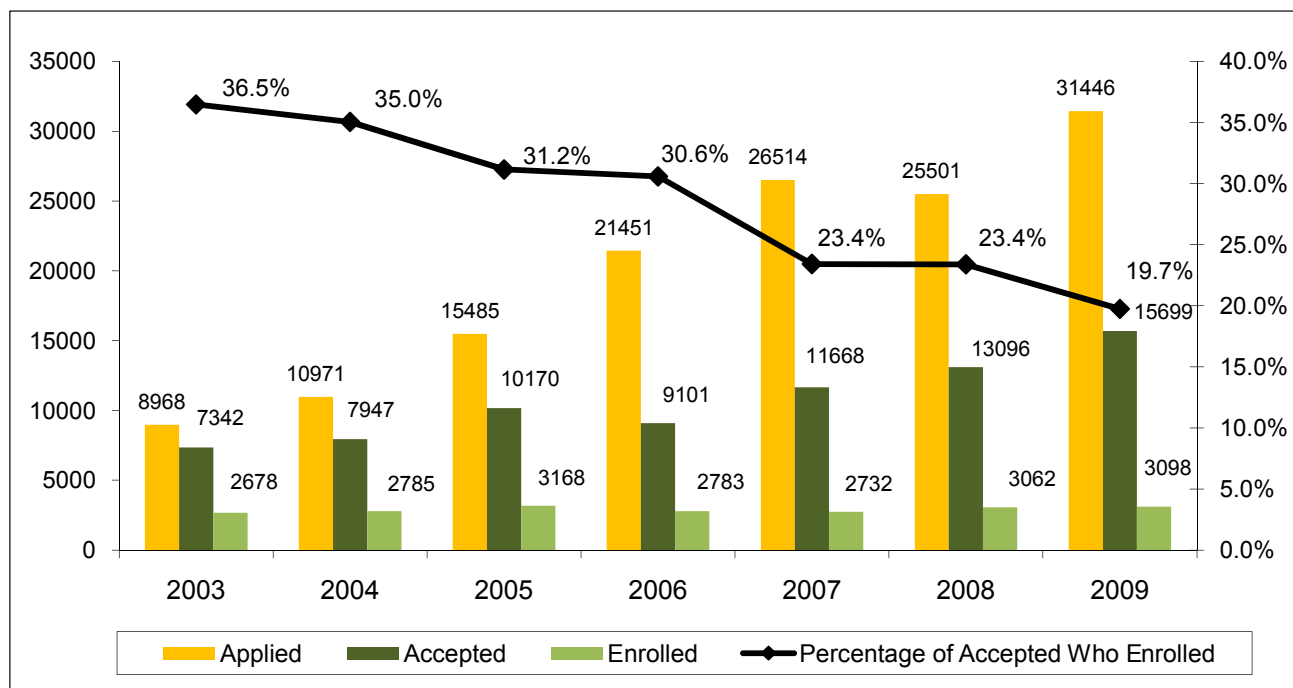
<i>Undergraduate Tuition and Other Semester Charges</i> .....	47
<i>Undergraduate Tuition, Room and Board Charges</i> .....	48
<i>Annual Undergraduate Student Cost Profile</i> .....	49
<i>Operating Funds:</i>	
<i>Sources of Revenues</i> .....	50
<i>Sources of Revenue as a Percentage of Total Revenues</i> .....	50
<i>Expenditures by Functions</i> .....	51
<i>Expenditures by Functions as a Percentage of Total Expenditures</i> .....	51
<i>Endowment Fund Balance - Market Value</i> .....	52
<i>Property, Plant and Equipment</i> .....	53
<i>Assets</i> .....	53

## ***Enrollment and Student Characteristics***

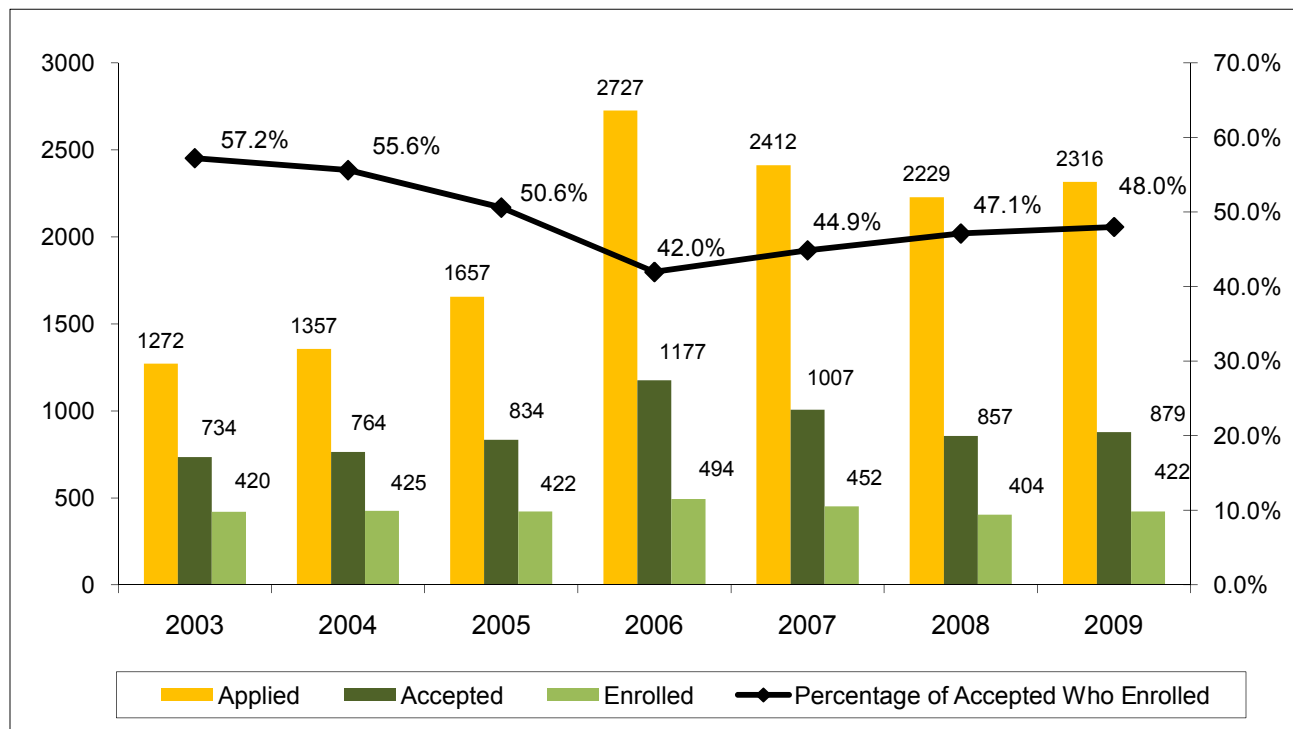
---



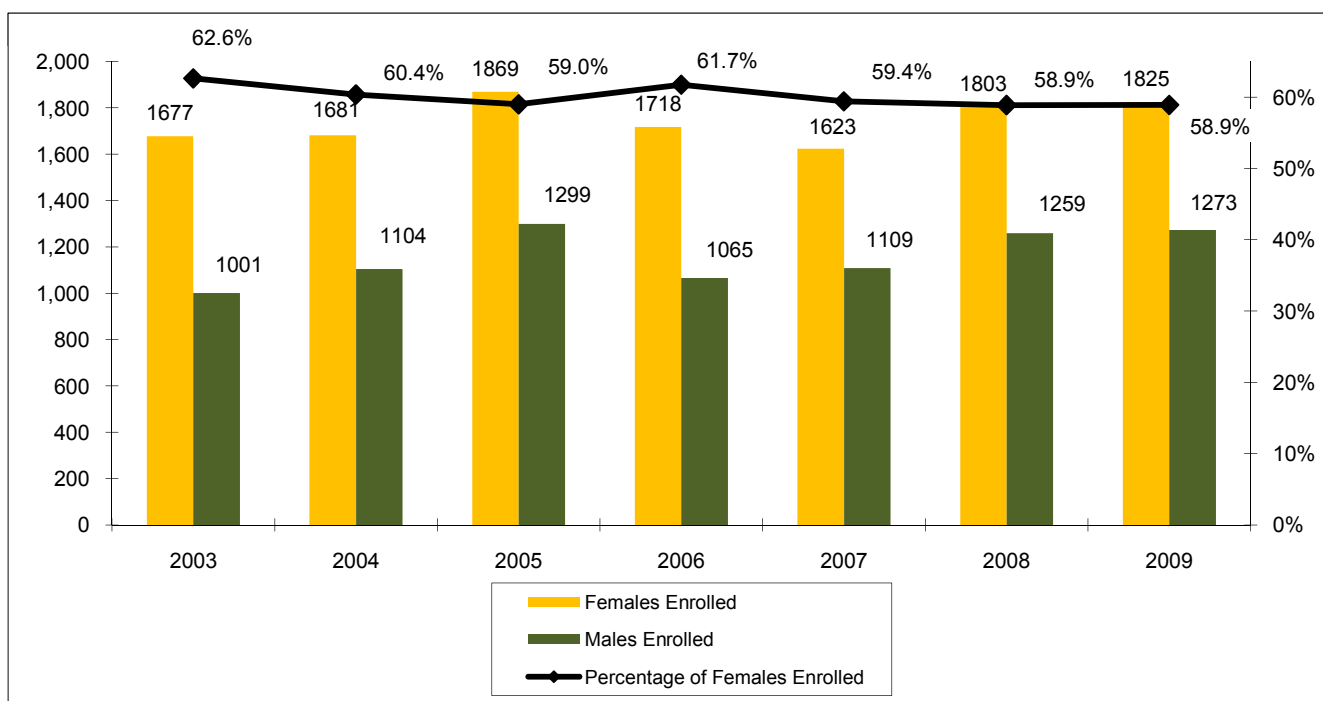
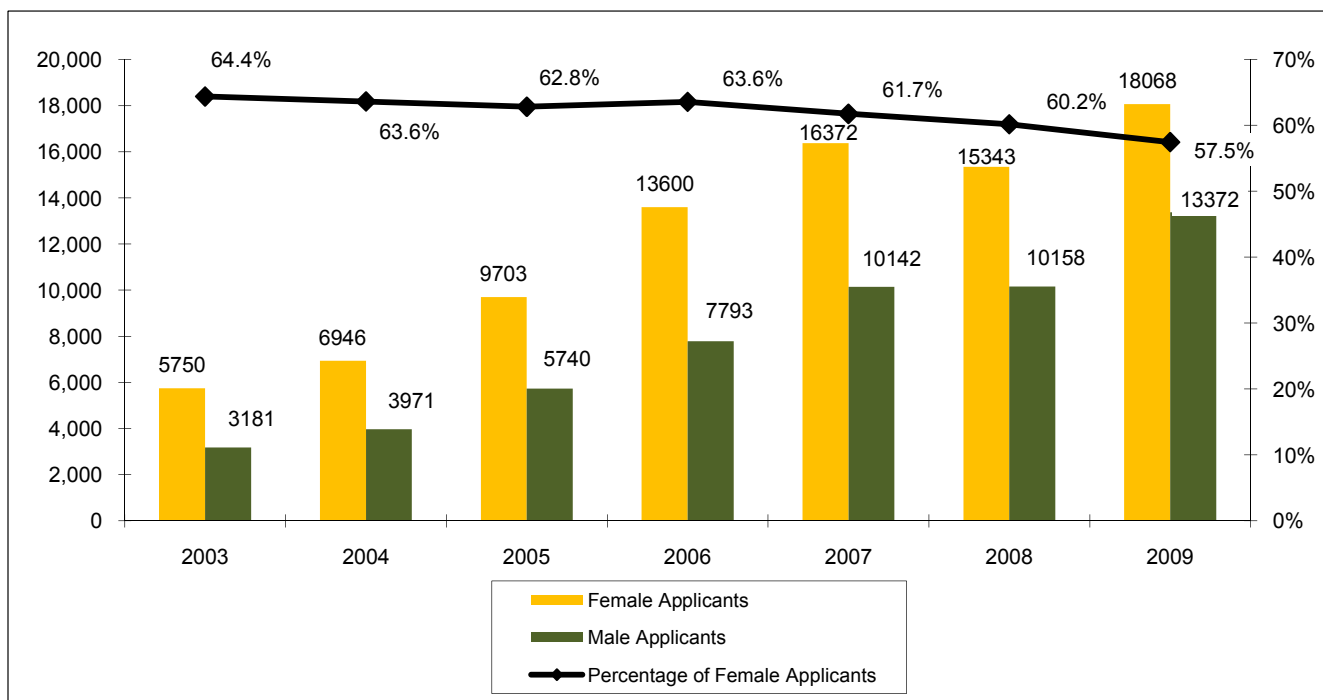
**New Freshman Applications, Acceptances and Enrollment  
Fall 2003 - Fall 2009**



**Transfer Applications, Acceptances and Enrollment  
Fall 2003 - Fall 2009**

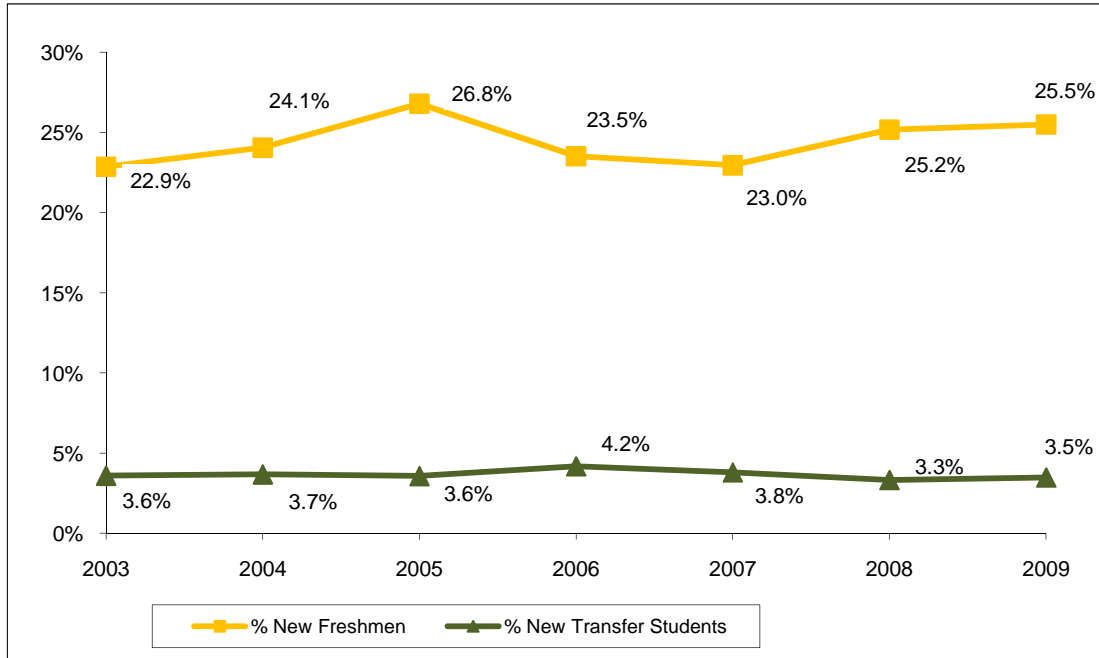


**New Freshman Applications and Enrollment by Gender\***  
**Fall 2003 - Fall 2009**



\*Totals of male and female applicants may not equal the total applicants displayed on the previous page, because there are some applicants who do not provide their gender.

**New Freshman and Transfer Student Enrollment  
Fall 2003 - Fall 2009**



	Fall	2003	2004	2005	2006	2007	2008	2009
<b>New Freshmen</b>		2,678	2,785	3,168	2,783	2,732	3,062	3,098
<b>New Transfer Students</b>		420	425	422	494	452	404	422
<b>Undergraduate Enrollment</b>		11,712	11,580	11,825	11,831	11,902	12,162	12,149
<b>% New Freshmen</b>		22.9%	24.1%	26.8%	23.5%	23.0%	25.2%	25.5%
<b>% New Transfer Students</b>		3.6%	3.7%	3.6%	4.2%	3.8%	3.3%	3.5%

Notes:

1. Freshmen who enter the University in the fall or preceding summer term are counted as "new freshmen." Similarly, transfer students entering in the fall or preceding summer term are counted as "transfer students" for the fall semester.

2. "Transfer students" refers to the entering summer/fall group of transfer students. For example, in Fall 2003 the 420 entering transfer students comprised 3.6% of the 11,712 undergraduates. However, for Fall 2003 the total number of enrolled undergraduates who had transferred into the University consisted of (a) transfers who entered in Fall 2003 and (b) students who transferred into the University in previous academic years. Generally, the total enrollment of students who had entered as transfer students is approximately 15% of the undergraduate student body.

**Headcount Enrollment by Classification  
Fall 2003 - Fall 2009**

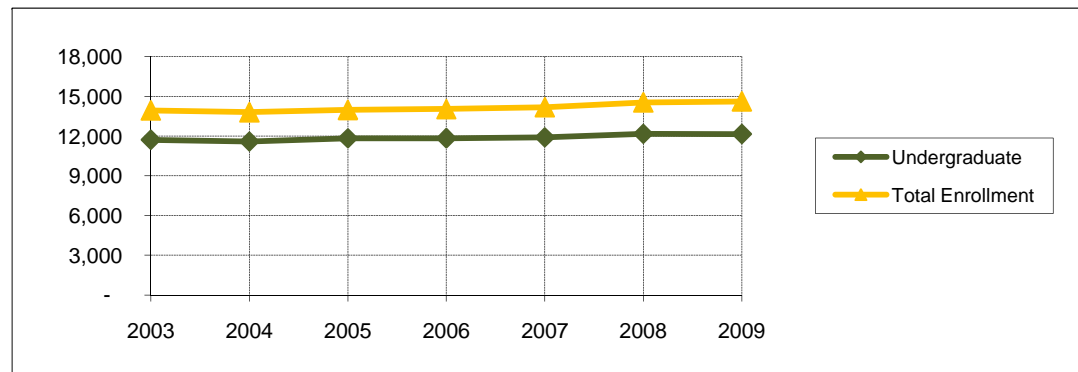
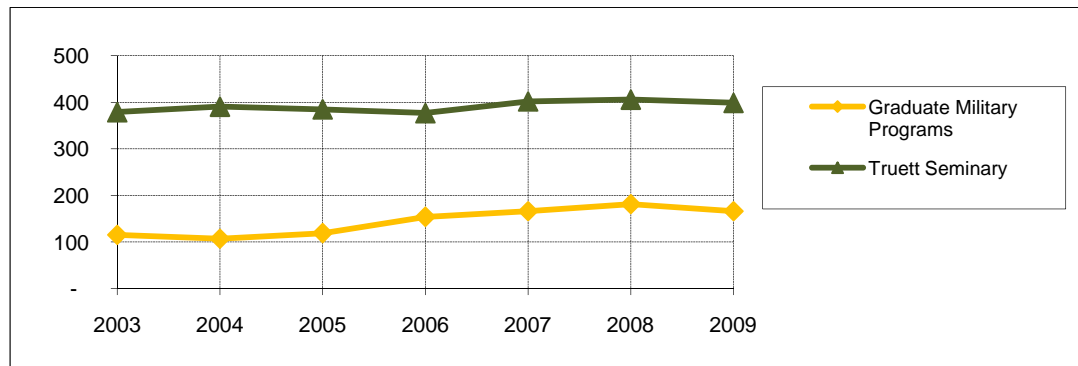
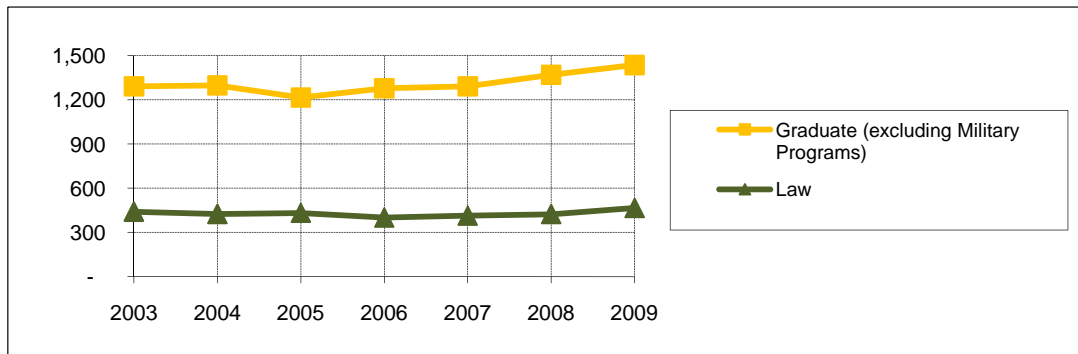
	<b>Fall</b>	<b>2003</b>	<b>2004</b>	<b>2005</b>	<b>2006</b>	<b>2007</b>	<b>2008</b>	<b>2009</b>
<b>Freshman</b>		3,382	3,430	3,791	3,524	3,315	3,522	3,616
<b>Sophomore</b>		2,506	2,391	2,529	2,833	2,683	2,557	2,623
<b>Junior</b>		2,462	2,425	2,295	2,481	2,652	2,604	2,464
<b>Senior</b>		3,262	3,223	3,080	2,896	3,159	3,383	3,338
<b>Special</b>		-	-	-	-	-	-	-
<b>Postbaccalaureate</b>		43	79	84	69	61	68	81
<b>Nondegree</b>		57	32	46	28	32	28	27
<b>TOTAL UNDERGRADUATE</b>		11,712	11,580	11,825	11,831	11,902	12,162	12,149
<b>Master's</b>		843	845	834	720	778	783	862
<b>Doctoral</b>		416	427	445	473	473	483	541
<b>Graduate Transient/Nondegree</b>		10	10	7	10	9	9	9
<b>Graduate Professional</b>		12	9	11	11	18	16	23
<b>TOTAL "WACO" GRADUATE</b>		1,281	1,291	1,297	1,214	1,278	1,291	1,435
<b>Seminary Master's</b>		318	337	345	344	334	365	364
<b>Seminary Doctoral</b>		35	41	43	39	42	36	35
<b>Nondegree</b>		-	1	3	2	1	1	-
<b>TOTAL SEMINARY</b>		353	379	391	385	377	402	399
<b>School of Law</b>		426	440	424	432	400	413	465
<b>Graduate Military Programs</b>		112	115	107	119	154	166	166
<b>TOTAL ENROLLMENT</b>		13,884	13,805	14,044	13,981	14,111	14,434	14,614

## Notes:

1. Headcount counts a student once in their primary program.

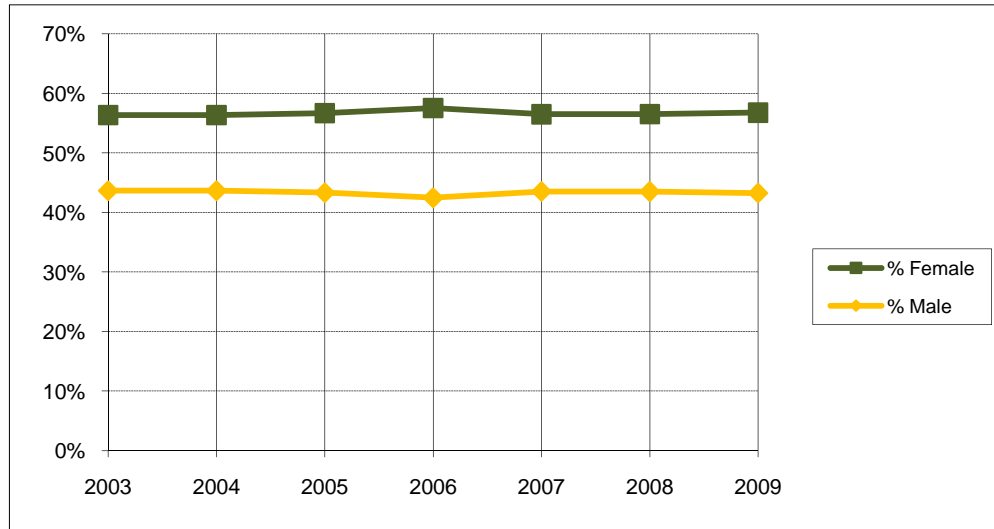


**Enrollment  
Fall 2003 - Fall 2009**



Fall	2003	2004	2005	2006	2007	2008	2009
<b>Undergraduate</b>	11,712	11,580	11,825	11,831	11,902	12,162	12,149
<b>Graduate (excluding Military Programs)</b>	1,291	1,297	1,214	1,278	1,291	1,369	1,435
<b>Law</b>	440	424	432	400	413	423	465
<b>Truett Seminary</b>	379	391	385	377	402	406	399
<b>SUBTOTAL</b>	13,822	13,692	13,856	13,886	14,008	14,360	14,448
<b>Graduate Military Programs</b>	115	107	119	154	166	181	166
<b>TOTAL ENROLLMENT</b>	13,937	13,799	13,975	14,040	14,174	14,541	14,614

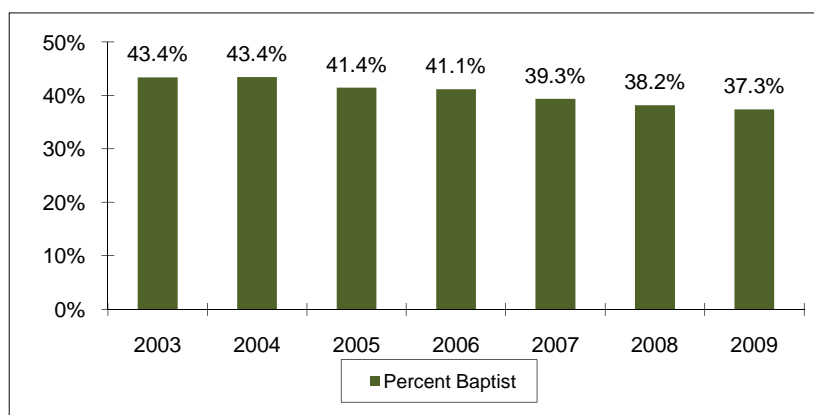
**Enrollment by Gender  
(Excluding Military Programs)  
Fall 2003 - Fall 2009**



	Fall	2003	2004	2005	2006	2007	2008	2009
<b>Female</b>		7,790	7,717	7,854	7,990	7,912	8,113	8,199
<b>Male</b>		6,032	5,975	6,002	5,896	6,096	6,247	6,249
<b>Total (excluding Military Programs)</b>		13,822	13,692	13,856	13,886	14,008	14,360	14,448
<b>% Female</b>		56.4%	56.4%	56.7%	57.5%	56.5%	56.5%	56.7%
<b>% Male</b>		43.6%	43.6%	43.3%	42.5%	43.5%	43.5%	43.3%

**Enrollment by Religious Affiliation (Excluding Military Programs)  
Fall 2003 - Fall 2009**

Fall	2003	2004	2005	2006	2007	2008	2009
African Methodist Episcopal	1	4	7	5	5	7	5
Anglican - Church of England	-	7	11	9	7	14	15
Assembly of God	125	136	130	129	131	129	144
Atheist	-	14	16	22	20	33	35
Baptist	5994	5941	5738	5710	5511	5482	5396
Buddhist	60	77	76	79	76	80	82
Catholic	1591	1765	1833	1788	1805	1923	1994
Christian Church	16	59	84	86	123	149	167
Christian Scientist	12	16	15	15	9	8	6
Church of Christ	253	269	257	259	253	241	270
Church of God	29	29	27	29	31	28	28
Church of the Nazarene	33	37	28	34	35	38	35
Congregational Church	21	19	17	14	10	6	7
Disciples of Christ (Christian)	76	80	86	91	101	107	109
Dutch Reformed	-	-	2	4	4	5	5
Eastern Orthodox	35	32	35	37	43	50	47
Episcopalian	249	251	256	262	253	279	274
Evangelical Free Church	3	12	25	36	43	51	42
Four Square Gospel	11	11	12	10	15	11	13
Full Gospel	-	2	4	3	3	2	3
Greek Orthodox	4	6	7	5	6	4	6
Hindu	89	105	115	103	101	113	120
Independent Bible Church	1	12	19	21	24	28	29
Interdenominational	380	266	167	98	79	83	72
Jehovah's Witness	12	10	11	8	9	12	13
Jewish	-	9	11	11	10	26	21
Judaism	22	23	21	14	15	-	-
Latter Day Saints (Mormon)	23	36	48	39	26	31	32
Lutheran	354	343	364	371	368	399	398
Mennonite	7	10	10	5	7	6	8
Methodist	1219	1133	1099	1074	1095	1168	1182
Missionary Alliance	1	2	2	5	7	8	10
Moslem (Islam, Muslim)	109	119	117	133	124	131	119
Non-Denominational	567	1054	1444	1703	1911	2080	2110
Pentecostal	107	100	112	99	110	124	119
Presbyterian	536	549	549	569	571	601	583
Protestant	3	27	54	53	68	81	91
Seventh Day Adventist	2	11	12	11	13	10	14
Society of Friends (Quakers)	1	2	3	2	2	4	6
Unitarian	7	6	4	3	6	10	10
United Brethren	3	-	2	2	1	1	-
United Church of Christ	-	2	6	5	3	4	4
Other/Not Specified	1866	1106	1020	930	974	793	824
<b>TOTAL RELIGION</b>	<b>13821</b>	<b>13692</b>	<b>13856</b>	<b>13886</b>	<b>14008</b>	<b>14360</b>	<b>14448</b>



**Enrollment by Racial / Ethnic Group\*  
Fall 2003 - Fall 2009**

A.

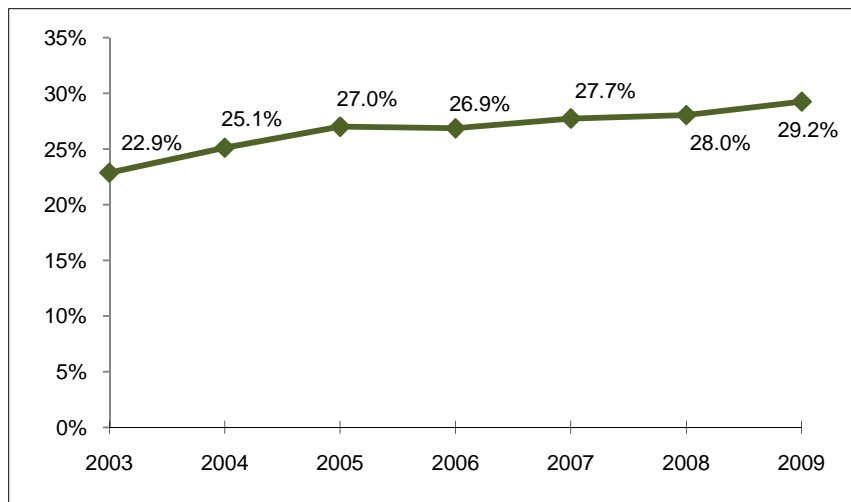
	Fall	2003	2004	2005	2006	2007	2008	2009
<b>African American/Black</b>		862	944	1,048	1,036	1,046	1,077	1,119
<b>American Indian/Alaskan Native</b>		83	80	93	88	90	110	108
<b>Asian/Pacific Islander</b>		865	977	1,044	1,050	1,127	1,132	1,166
<b>Hispanic</b>		1,077	1,133	1,284	1,301	1,375	1,464	1,585
<b>White</b>		10,541	10,318	10,183	10,249	10,221	10,448	10,285
<b>Other</b>		300	330	304	295	293	294	296
<b>Not Specified</b>		209	17	19	21	22	16	55
<b>Total</b>		13,937	13,799	13,975	14,040	14,174	14,541	14,614

B.

	Fall	2003	2004	2005	2006	2007	2008	2009
<b>African American/Black</b>		835	908	1,001	990	995	1,020	1,064
<b>American Indian/Alaskan Native</b>		82	79	92	88	90	110	108
<b>Asian/Pacific Islander</b>		666	770	846	857	907	920	932
<b>Hispanic</b>		1,040	1,094	1,237	1,256	1,330	1,420	1,545
<b>White</b>		10,476	10,248	10,128	10,183	10,151	10,383	10,222
<b>Other</b>		256	286	264	257	245	255	256
<b>Not Specified</b>		184	17	19	20	22	16	53
<b>NONRESIDENT ALIEN</b>		398	397	388	389	434	417	434
<b>Total</b>		13,937	13,799	13,975	14,040	14,174	14,541	14,614

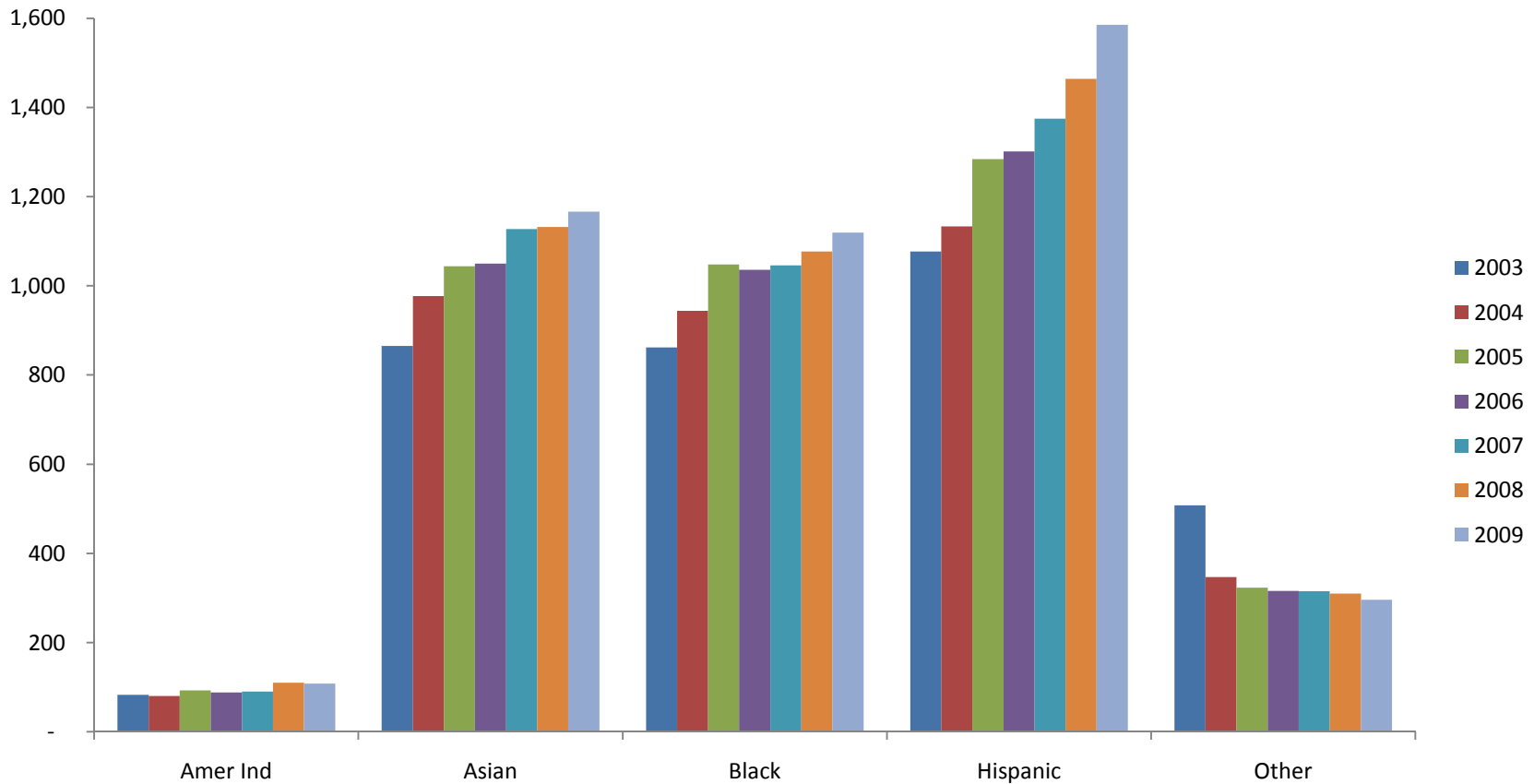
\*In Table B, nonresident aliens are partitioned as a group.

**Racial / Ethnic Minority Percentage  
Fall 2003 - Fall 2009  
(From Table A)**



Enrollment by Race and Gender  
Fall 2003 - Fall 2009

YEAR	Total			Alaskan Native/ Amer. Indian			Asian/ Pacific Islander			African Amer./ Black			Hispanic			White			Other		
	Total	Men	Women	Total	Men	Women	Total	Men	Women	Total	Men	Women	Total	Men	Women	Total	Men	Women	Total	Men	Women
2003	13,936	6,117	7,819	83	36	47	865	421	444	862	307	555	1077	476	601	10541	4615	5926	508	262	246
2004	13,799	6,052	7,747	80	38	42	977	466	511	944	352	592	1133	492	641	10318	4547	5771	347	157	190
2005	13,975	6,089	7,886	93	42	51	1,044	492	552	1048	384	664	1284	536	748	10183	4493	5690	323	142	181
2006	14,040	5,999	8,041	88	35	53	1,050	480	570	1036	385	651	1301	522	779	10249	4437	5812	316	140	176
2007	14,174	6,200	7,974	90	36	54	1,127	513	614	1046	394	652	1375	584	791	10221	4533	5688	315	140	175
2008	14,541	6,364	8,177	110	47	63	1,132	509	623	1077	411	666	1464	613	851	10448	4642	5806	310	142	168
2009	14,614	6,349	8,265	108	45	63	1,166	550	616	1119	395	724	1585	652	933	10285	4553	5732	296	120	176



**Program Enrollment by Unit, Level, and Race  
Fall 2003 - Fall 2009**

	2003	2004	2005	2006	2007	2008	2009
<b>College of Arts &amp; Sciences</b>							
UG Total	6,458	6,650	6,709	6,503	6,410	6,490	6,448
Alaskan Native / Amer. Indian	42	37	45	48	46	56	52
Asian / Pacific Islander	422	515	590	587	605	581	612
African American / Black	516	575	630	573	533	567	563
Hispanic	598	673	742	756	789	813	870
White	4,648	4,675	4,529	4,388	4,285	4,319	4,182
Other	163	174	172	151	152	154	149
Not Specified	69	1	1	-	-	-	20
GR Total	615	641	600	637	627	631	647
Alaskan Native / Amer. Indian	3	2	4	4	3	6	8
Asian / Pacific Islander	56	59	66	59	70	70	72
African American / Black	8	19	11	9	11	10	8
Hispanic	37	49	52	49	40	43	34
White	458	493	453	495	485	489	510
Other	17	19	14	20	17	13	13
Not Specified	36	-	-	1	1	-	2
<b>School of Business</b>							
UG Total	2,879	2,653	2,583	2,647	2,683	2,767	2,670
Alaskan Native / Amer. Indian	13	18	15	16	18	16	12
Asian / Pacific Islander	155	149	136	146	156	171	148
African American / Black	123	120	122	149	168	146	153
Hispanic	186	165	196	185	199	215	232
White	2,313	2,144	2,076	2,108	2,085	2,169	2,077
Other	61	57	38	42	55	50	43
Not Specified	28	-	-	1	2	-	5
GR Total	282	295	232	257	279	294	346
Alaskan Native / Amer. Indian	-	-	-	-	-	1	2
Asian / Pacific Islander	41	44	43	46	42	39	46
African American / Black	11	8	12	17	23	26	24
Hispanic	23	29	13	9	21	22	26
White	173	199	157	169	171	199	234
Other	11	12	5	13	12	7	6
Not Specified	23	3	2	3	10	-	8
<b>School of Engineering &amp; Computer Science</b>							
UG Total	507	456	516	538	548	654	736
Alaskan Native / Amer. Indian	1	2	2	3	3	5	5
Asian / Pacific Islander	43	32	29	26	33	42	46
African American / Black	32	38	51	45	43	43	50
Hispanic	41	36	47	52	54	79	87
White	381	344	380	404	408	478	537
Other	6	4	7	8	7	7	6
Not Specified	3	-	-	-	-	-	5

## Notes:

1. Program Count counts a student in each program.

**Program Enrollment by Unit, Level, and Race  
Fall 2003 - Fall 2009**

	2003	2004	2005	2006	2007	2008	2009
School of Engineering & Computer Science - Continued							
GR Total	29	40	40	37	46	46	48
Alaskan Native / Amer. Indian	1	1	1	-	1	1	-
Asian / Pacific Islander	17	17	14	7	12	14	17
African American / Black	-	1	-	2	1	2	3
Hispanic	-	-	1	2	2	5	5
White	10	18	21	22	27	21	23
Other	1	3	3	4	3	3	-
Not Specified	-	-	-	-	-	-	-
School of Education							
UG Total	943	830	923	982	1,056	1,061	1,056
Alaskan Native / Amer. Indian	8	3	4	3	3	7	6
Asian / Pacific Islander	25	28	29	31	34	42	50
African American / Black	55	63	77	96	110	123	130
Hispanic	56	51	72	70	80	77	81
White	779	668	724	770	820	800	773
Other	9	17	15	12	9	12	14
Not Specified	11	-	2	-	-	-	2
GR Total	320	292	259	255	217	234	266
Alaskan Native / Amer. Indian	2	3	4	5	4	-	-
Asian / Pacific Islander	13	14	11	10	11	9	15
African American / Black	39	34	32	28	18	16	22
Hispanic	15	10	7	8	10	19	24
White	239	226	198	199	170	183	199
Other	7	5	7	5	4	7	6
Not Specified	5	-	-	-	-	-	-
Graduate School							
GR Total	10	7	10	10	9	13	9
Alaskan Native / Amer. Indian	-	-	-	-	-	1	-
Asian / Pacific Islander	-	1	1	-	3	4	2
African American / Black	-	-	1	1	-	-	-
Hispanic	-	-	1	-	-	2	1
White	8	5	7	8	6	6	6
Other	1	1	-	1	-	-	-
Not Specified	1	-	-	-	-	-	-
Honors College							
UG Total	154	173	179	182	206	202	202
Alaskan Native / Amer. Indian	2	1	1	-	1	2	3
Asian / Pacific Islander	10	22	27	24	29	20	18
African American / Black	3	6	5	4	6	2	2
Hispanic	1	7	8	5	6	8	6
White	133	133	135	143	157	165	166
Other	3	4	3	6	7	5	7
Not Specified	2	-	-	-	-	-	-

## Notes:

1. Program Count counts a student in each program.

**Program Enrollment by Unit, Level, and Race  
Fall 2003 - Fall 2009**

	2003	2004	2005	2006	2007	2008	2009
<b>Institutes &amp; Special Studies</b>							
UG Total	77	74	53	43	43	46	49
Alaskan Native / Amer. Indian	-	-	-	-	1	-	1
Asian / Pacific Islander	1	2	4	8	5	3	3
African American / Black	2	-	2	1	2	1	4
Hispanic	2	5	6	5	4	2	2
White	68	63	39	28	30	36	36
Other	3	4	2	1	1	4	3
Not Specified	1	-	-	-	-	-	-
GR Total	49	55	23	24	30	32	33
Alaskan Native / Amer. Indian	-	-	-	-	-	-	-
Asian / Pacific Islander	15	20	14	15	15	14	11
African American / Black	-	-	-	-	1	-	1
Hispanic	5	3	-	-	1	1	2
White	25	32	9	9	13	17	18
Other	1	-	-	-	-	-	1
Not Specified	3	-	-	-	-	-	-
<b>School of Law</b>							
LW Total	440	424	432	400	413	423	465
Alaskan Native / Amer. Indian	2	1	5	1	-	1	1
Asian / Pacific Islander	20	20	21	25	22	31	42
African American / Black	2	2	5	5	4	5	12
Hispanic	28	18	17	16	17	16	35
White	388	377	375	344	363	363	367
Other	-	6	9	9	7	7	7
Not Specified	-	-	-	-	-	-	1
<b>School of Music</b>							
UG Total	292	279	287	304	313	319	320
Alaskan Native / Amer. Indian	2	2	1	1	1	2	4
Asian / Pacific Islander	8	5	6	10	17	20	17
African American / Black	9	8	10	10	10	14	13
Hispanic	25	26	35	35	36	39	42
White	237	231	229	242	243	238	232
Other	6	7	6	6	6	6	12
Not Specified	5	-	-	-	-	-	-
GR Total	62	69	67	64	61	61	61
Alaskan Native / Amer. Indian	-	1	1	1	1	1	1
Asian / Pacific Islander	1	4	6	5	4	2	3
African American / Black	1	1	3	2	-	-	-
Hispanic	9	6	5	8	6	3	5
White	49	56	51	46	48	52	49
Other	1	1	1	2	2	3	3
Not Specified	1	-	-	-	-	-	-

## Notes:

1. Program Count counts a student in each program.



**Program Enrollment by Unit, Level, and Race  
Fall 2003 - Fall 2009**

	2003	2004	2005	2006	2007	2008	2009
<b>School of Nursing</b>							
UG Total	402	465	497	514	507	501	539
Alaskan Native / Amer. Indian	6	7	6	4	3	4	5
Asian / Pacific Islander	22	33	42	38	47	44	43
African American / Black	36	40	39	34	41	37	52
Hispanic	25	31	46	56	58	59	79
White	299	342	352	371	349	350	349
Other	7	11	12	10	8	7	11
Not Specified	7	1	-	1	1	-	-
GR Total	42	39	35	37	39	52	58
Alaskan Native / Amer. Indian	-	-	-	-	1	1	1
Asian / Pacific Islander	-	3	4	2	3	5	4
African American / Black	1	2	2	1	2	2	4
Hispanic	1	-	2	4	5	4	4
White	39	34	27	30	27	39	45
Other	-	-	-	-	-	1	-
Not Specified	1	-	-	-	1	-	-
<b>School of Social Work</b>							
UG Total	-	-	78	118	136	122	129
Alaskan Native / Amer. Indian	-	-	1	1	-	1	1
Asian / Pacific Islander	-	-	-	2	6	5	3
African American / Black	-	-	12	13	15	17	15
Hispanic	-	-	8	8	9	9	11
White	-	-	56	92	106	89	97
Other	-	-	1	2	-	1	1
Not Specified	-	-	-	-	-	-	1
SW Total	-	-	71	85	110	117	122
Alaskan Native / Amer. Indian	-	-	-	-	1	1	3
Asian / Pacific Islander	-	-	-	1	4	5	7
African American / Black	-	-	5	7	12	11	11
Hispanic	-	-	3	7	10	14	12
White	-	-	60	68	82	83	83
Other	-	-	3	2	1	3	6
Not Specified	-	-	-	-	-	-	-
<b>Truett Seminary</b>							
PR Total	-	393	387	379	403	407	399
Alaskan Native / Amer. Indian	-	2	2	1	2	2	3
Asian / Pacific Islander	-	7	5	8	11	7	11
African American / Black	-	27	29	35	42	52	51
Hispanic	-	27	25	31	30	32	27
White	-	322	323	301	315	311	298
Other	-	8	3	2	3	3	9
Not Specified	-	-	-	1	-	-	-

## Notes:

1. Program Count counts a student in each program.

**Program Enrollment by Unit, Level, and Race  
Fall 2003 - Fall 2009**

	2003	2004	2005	2006	2007	2008	2009
<b>Graduate Military Programs</b>							
GR Total	114	107	119	154	166	181	166
Alaskan Native / Amer. Indian	-	1	1	-	1	2	1
Asian / Pacific Islander	9	8	6	5	7	9	9
African American / Black	6	3	3	7	9	8	9
Hispanic	6	3	4	5	9	12	8
White	88	78	86	116	122	133	125
Other	3	2	5	4	2	1	-
Not Specified	2	12	14	17	16	16	14

**Notes:**

1. Program Count counts a student in each program.

**Program Enrollment by Unit, Level, and Gender  
Fall 2003 - Fall 2009**

		2003	2004	2005	2006	2007	2008	2009
<b>College of Arts &amp; Sciences</b>								
UG	Total	6,458	6,650	6,709	6,503	6,410	6,490	6,448
	Male	2,202	2,321	2,373	2,230	2,254	2,273	2,263
	Female	4,256	4,329	4,336	4,273	4,156	4,217	4,185
GR	Total	615	641	600	637	627	631	647
	Male	289	305	304	316	313	308	340
	Female	326	336	296	321	314	323	307
<b>School of Business</b>								
UG	Total	2,879	2,653	2,583	2,647	2,683	2,767	2,670
	Male	1,739	1,613	1,582	1,578	1,665	1,704	1,609
	Female	1,140	1,040	1,001	1,069	1,018	1,063	1,061
GR	Total	282	295	232	257	279	294	346
	Male	198	203	152	174	193	191	230
	Female	84	92	80	83	86	103	116
<b>School of Engineering &amp; Computer Science</b>								
UG	Total	507	456	516	538	548	654	736
	Male	434	389	435	455	463	536	598
	Female	73	67	81	83	85	118	138
GR	Total	29	40	40	37	46	46	48
	Male	26	36	34	28	37	38	41
	Female	3	4	6	9	9	8	7
<b>School of Education</b>								
UG	Total	943	830	923	982	1,056	1,061	1,056
	Male	222	213	225	239	249	255	253
	Female	721	617	698	743	807	806	803
GR	Total	320	292	259	255	217	234	266
	Male	121	117	102	87	78	84	90
	Female	199	175	157	168	139	150	176
<b>Graduate School</b>								
GR	Total	10	7	10	10	9	13	9
	Male	1	2	6	3	3	6	0
	Female	9	5	4	7	6	7	9
<b>Honors College</b>								
UG	Total	154	173	179	182	206	202	202
	Male	68	79	84	84	94	93	92
	Female	86	94	95	98	112	109	110

## Notes:

1. Program Count counts a student in each program.

**Program Enrollment by Unit, Level, and Gender  
Fall 2003 - Fall 2009**

		2003	2004	2005	2006	2007	2008	2009
<b>Institutes &amp; Special Studies</b>								
UG	Total	77	74	53	43	43	46	49
	Male	54	48	38	29	26	28	31
	Female	23	26	15	14	17	18	18
GR	Total	49	55	23	24	30	32	33
	Male	26	30	15	15	17	15	15
	Female	23	25	8	9	13	17	18
<b>School of Law</b>								
LW	Total	440	424	432	400	413	423	465
	Male	245	226	236	227	250	239	246
	Female	195	198	196	173	163	184	219
<b>School of Music</b>								
UG	Total	292	279	287	304	313	319	320
	Male	141	132	139	147	148	153	145
	Female	151	147	148	157	165	166	175
GR	Total	67	69	67	64	61	61	61
	Male	37	35	33	35	37	37	34
	Female	30	34	34	29	24	24	27
<b>School of Nursing</b>								
UG	Total	402	465	497	514	507	501	539
	Male	26	28	28	31	35	30	36
	Female	376	437	469	483	472	471	503
GR	Total	42	39	35	37	39	52	58
	Male	6	5	3	1	0	1	2
	Female	36	34	32	36	39	51	56
<b>School of Social Work</b>								
UG	Total			78	118	136	122	129
	Male			5	7	9	13	14
	Female			73	111	127	109	115
SW	Total			71	85	110	117	122
	Male			8	12	15	17	22
	Female			63	73	95	100	100
<b>Truett Seminary</b>								
PR	Total	382	393	387	379	403	407	399
	Male	251	260	262	267	284	282	259
	Female	131	133	125	112	119	125	140

## Notes:

1. Program Count counts a student in each program.

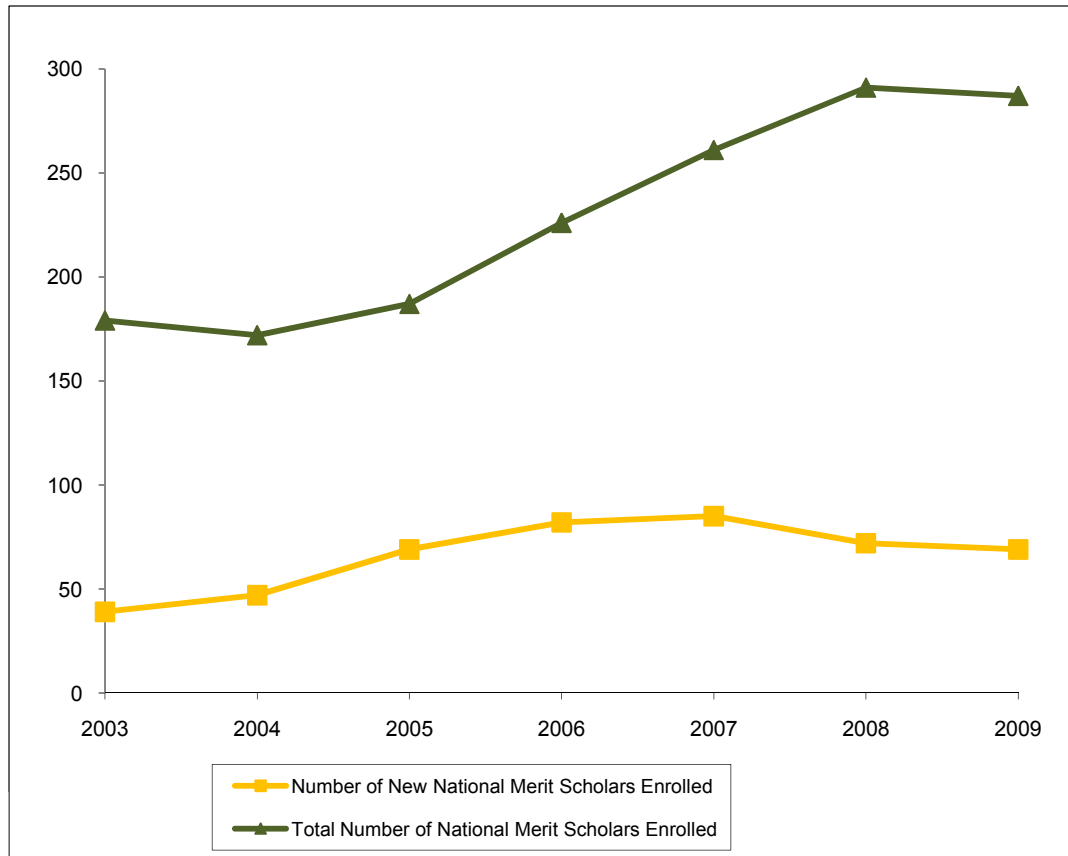
**Program Enrollment by Unit, Level, and Gender  
Fall 2003 - Fall 2009**

		2003	2004	2005	2006	2007	2008	2009
Graduate Military Programs								
GR	Total	115	107	119	154	166	181	166
	Male	86	77	87	103	104	117	100
	Female	29	30	32	51	62	64	66

Notes:

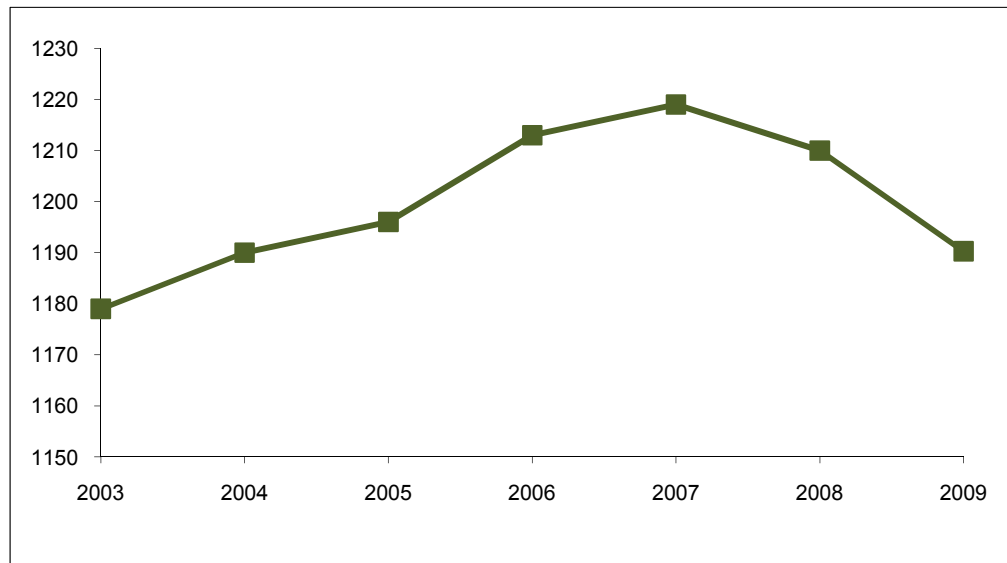
1. Program Count counts a student in each program.

**National Merit Scholars  
Fall 2003 - Fall 2009**



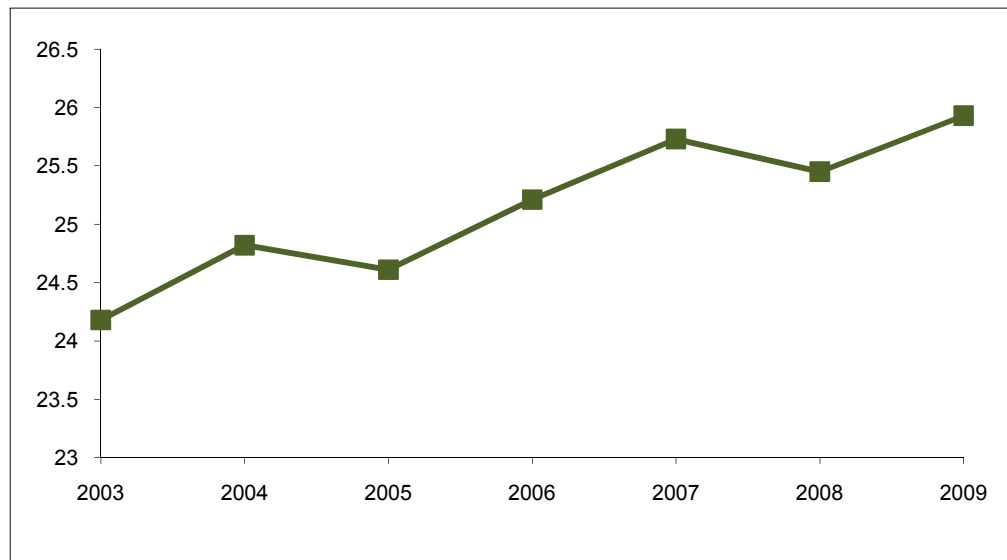
Fall	2003	2004	2005	2006	2007	2008	2009
<b>Number of New National Merit Scholars Enrolled</b>	39	47	69	82	85	72	69
<b>Total Number of National Merit Scholars Enrolled</b>	179	172	187	226	261	291	287

**Average SAT Scores for First-Time Freshmen  
Fall 2003 - Fall 2009**



Fall	2003	2004	2005	2006	2007	2008	2009
<b>Average SAT</b>	1179	1190	1196	1213	1219	1210	1190
<b>Number of Students</b>	1,808	1,931	2,284	1,860	1,801	2,015	1,808

**Average ACT Scores for First-Time Freshmen  
Fall 2003 - Fall 2009**



Fall	2003	2004	2005	2006	2007	2008	2009
<b>Average ACT</b>	24.2	24.8	24.6	25.2	25.7	25.5	25.9
<b>Number of Students</b>	870	853	884	923	931	1,046	1,290

Notes:

1. In these tables, the highest SAT score is compared to the highest ACT score, and only the better score is retained.

**Leading Texas Counties of Origin  
Fall 2003 - Fall 2009**

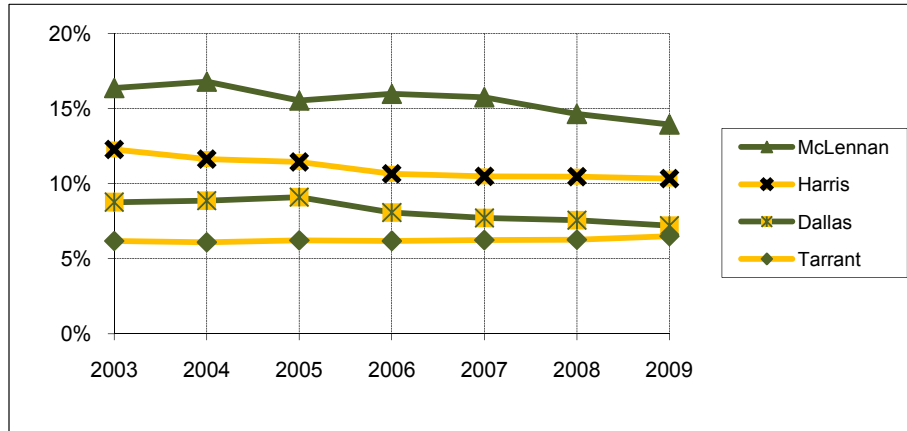
Fall	2003	2004	2005	2006	2007	2008	2009
McLennan	2,279	2,315	2,169	2,242	2,232	2,128	2,036
Harris	1,711	1,605	1,599	1,494	1,486	1,521	1,510
Dallas	1,221	1,222	1,271	1,134	1,093	1,100	1,052
Tarrant	860	840	868	867	884	910	948
Collin	459	457	481	582	601	631	626
Bexar	438	464	486	507	507	521	533
Travis	372	385	405	410	404	420	432
Fort Bend	315	318	332	358	379	416	421
Denton	171	180	196	270	298	340	386
Montgomery	269	263	298	283	290	324	299
Williamson	171	197	201	220	221	268	285
Bell	204	199	215	210	194	200	216
Galveston	102	109	108	109	105	114	120
Ellis	57	61	68	69	90	109	114
El Paso	85	95	100	109	120	116	112
Brazoria	115	99	97	100	105	101	109
Hidalgo	83	90	96	88	99	96	102
Smith	138	146	151	150	122	109	97
Gregg	145	111	106	97	94	108	97
Nueces	83	71	89	71	74	92	80
Rockwall	72	74	84	69	76	79	80
Johnson	74	65	68	64	69	70	79
Jefferson	71	87	88	81	70	69	74

**Leading States of Origin  
Fall 2003 - Fall 2009**

Fall	2003	2004	2005	2006	2007	2008	2009
Texas	111,323	113,491	113,316	113,355	116,616	116,647	
California	238	255	252	269	268	278	296
Colorado	129	132	145	143	179	199	201
Oklahoma	186	184	177	170	175	195	193
Louisiana	145	136	145	152	176	169	168
Illinois	103	97	105	117	125	167	155
Missouri	121	101	100	97	105	119	127
Arkansas	133	122	105	99	104	110	109
Tennessee	67	65	66	80	88	89	103
Kansas	84	84	91	93	99	100	98
Florida	60	80	88	97	86	86	80
Georgia	46	58	63	73	61	73	78
Arizona	56	62	81	79	78	75	72
Virginia	38	37	44	55	63	59	56

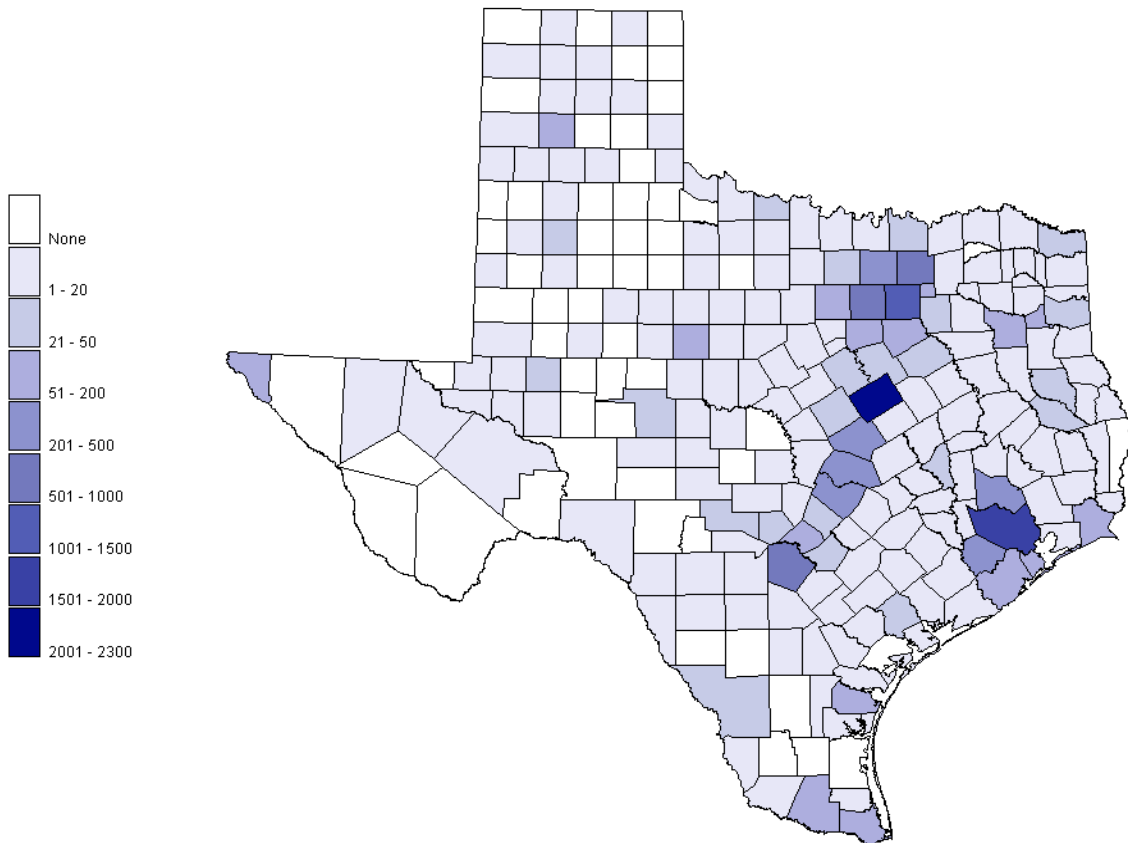


Percentage From Top Four Texas Counties  
Fall 2003 - Fall 2009



Fall	2003	2004	2005	2006	2007	2008	2009
<b>McLennan</b>	16.4%	16.8%	15.5%	16.0%	15.7%	14.6%	13.9%
<b>Harris</b>	12.3%	11.6%	11.4%	10.6%	10.5%	10.5%	10.3%
<b>Dallas</b>	8.8%	8.9%	9.1%	8.1%	7.7%	7.6%	7.2%
<b>Tarrant</b>	6.2%	6.1%	6.2%	6.2%	6.2%	6.3%	6.5%

Students From Texas by County  
Fall 2009



**Texas Enrollment by County  
Fall 2009**

	n		n		n		n		n
Anderson	10	Crane	2	Hartley	1	Madison	5	San Patricio	11
Andrews	1	Crockett	0	Haskell	1	Marion	3	San Saba	0
Angelina	22	Crosby	0	Hays	47	Martin	0	Schleicher	1
Aransas	6	Culberson	2	Hemphill	0	Mason	0	Scurry	1
Archer	2	Dallam	0	Henderson	18	Matagorda	13	Shackelford	1
Armstrong	0	Dallas	1,052	Hidalgo	102	Maverick	11	Shelby	2
Atascosa	5	Dawson	0	Hill	29	Mc Culloch	1	Sherman	1
Austin	12	De Witt	8	Hockley	1	Mc Lennan	2,036	Smith	97
Bailey	0	Deaf Smith	3	Hood	15	Mc Mullen	1	Somervell	5
Bandera	10	Delta	0	Hopkins	15	Medina	14	Starr	7
Bastrop	13	Denton	386	Houston	3	Menard	2	Stephens	2
Baylor	2	Dickens	0	Howard	5	Midland	46	Sterling	0
Bee	5	Dimmit	0	Hudspeth	0	Milam	11	Stonewall	0
Bell	216	Donley	0	Hunt	18	Mills	2	Sutton	0
Bexar	533	Duval	0	Hutchinson	1	Mitchell	0	Swisher	3
Blanco	3	Eastland	4	Irion	0	Montague	4	Tarrant	948
Borden	0	Ector	13	Jack	1	Montgomery	299	Taylor	52
Bosque	27	Edwards	0	Jackson	5	Moore	2	Terrell	0
Bowie	31	El Paso	112	Jasper	8	Morris	4	Terry	0
Brazoria	109	Ellis	114	Jeff Davis	0	Motley	0	Throckmorton	0
Brazos	46	Erath	13	Jefferson	74	Nacogdoches	22	Titus	11
Brewster	0	Falls	15	Jim Hogg	0	Navarro	28	Tom Green	24
Briscoe	1	Fannin	3	Jim Wells	5	Newton	0	Travis	432
Brooks	0	Fayette	11	Johnson	79	Nolan	5	Trinity	4
Brown	14	Fisher	1	Jones	2	Nueces	80	Tyler	2
Burleson	2	Floyd	0	Karnes	2	Ochiltree	3	Upshur	13
Burnet	18	Foard	0	Kaufman	40	Oldham	0	Upton	1
Caldwell	5	Fort Bend	421	Kendall	45	Orange	11	Uvalde	5
Calhoun	3	Franklin	5	Kenedy	0	Palo Pinto	3	Val Verde	9
Callahan	3	Freestone	13	Kent	0	Panola	6	Van Zandt	12
Cameron	62	Frio	1	Kerr	22	Parker	60	Victoria	30
Camp	2	Gaines	0	Kimble	2	Parmer	3	Walker	15
Carson	3	Galveston	120	King	0	Pecos	2	Waller	6
Cass	8	Garza	0	Kinney	1	Polk	5	Ward	1
Castro	1	Gillespie	20	Kleberg	4	Potter	12	Washington	13
Chambers	11	Glasscock	0	Knox	1	Presidio	0	Webb	22
Cherokee	13	Goliad	1	La Salle	0	Rains	3	Wharton	7
Childress	2	Gonzales	2	Lamar	15	Randall	54	Wheeler	0
Clay	1	Gray	2	Lamb	0	Reagan	0	Wichita	28
Cochran	0	Grayson	38	Lampasas	3	Real	0	Wilbarger	4
Coke	0	Gregg	97	Lavaca	9	Red River	1	Willacy	1
Coleman	1	Grimes	8	Lee	3	Reeves	1	Williamson	285
Collin	626	Guadalupe	49	Leon	6	Refugio	0	Wilson	5
Collingsworth	1	Hale	6	Liberty	16	Roberts	0	Winkler	1
Colorado	5	Hall	0	Limestone	5	Robertson	5	Wise	29
Comal	61	Hamilton	3	Lipscomb	0	Rockwall	80	Wood	7
Comanche	1	Hansford	0	Live Oak	1	Runnels	2	Yoakum	1
Concho	1	Hardeman	1	Llano	6	Rusk	20	Young	9
Cooke	5	Hardin	14	Loving	0	Sabine	4	Zapata	1
Coryell	39	Harris	1,510	Lubbock	39	San Augustine	1	Zavala	3
Cottle	0	Harrison	24	Lynn	1	San Jacinto	3	Total	11,647

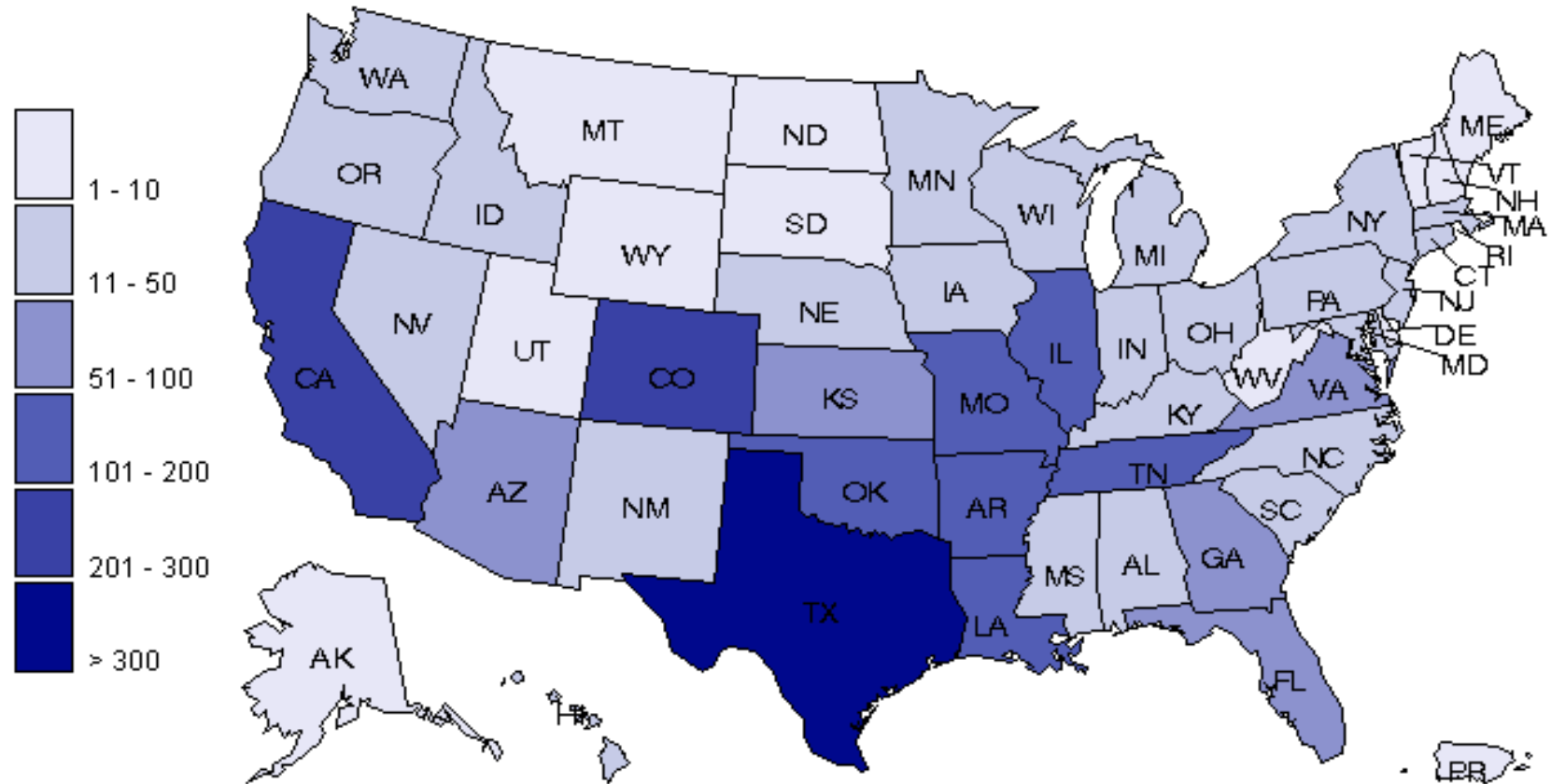
Source: ICUT

**Enrollment by State**  
**Fall 2003 - Fall 2009**

Fall	2003	2004	2005	2006	2007	2008	2009
Alabama	34	33	33	32	29	33	38
Alaska	14	18	20	15	13	9	10
Arizona	56	62	81	79	78	75	72
Arkansas	133	122	105	99	104	110	109
California	238	255	252	269	268	278	296
Colorado	129	132	145	143	179	199	201
Connecticut	8	6	7	8	9	10	11
Delaware	1	0	1	1	3	4	4
District of Columbia	2	2	2	2	1	1	3
Florida	60	80	88	97	86	86	80
Georgia	46	58	63	73	61	73	78
Hawaii	8	15	13	10	14	12	13
Idaho	5	5	9	5	13	10	12
Illinois	103	97	105	117	125	167	155
Indiana	28	28	28	29	28	26	32
Iowa	24	21	19	20	16	20	27
Kansas	84	84	91	33	99	100	98
Kentucky	18	18	13	13	7	13	17
Louisiana	145	136	145	152	176	169	168
Maine	4	6	6	2	3	3	2
Maryland	22	18	28	32	29	19	18
Massachusetts	12	18	19	22	19	25	23
Michigan	16	16	22	31	25	40	37
Minnesota	43	35	35	37	36	49	47
Mississippi	34	37	38	34	28	27	19
Missouri	121	101	100	97	105	119	127
Montana	2	6	1	3	8	6	7
Nebraska	41	34	29	28	31	29	32
Nevada	2	1	12	19	13	13	14
New Hampshire	8	8	5	7	9	12	7
New Jersey	22	24	21	19	23	21	24
New Mexico	68	70	66	69	65	53	46
New York	18	27	24	25	26	26	26
North Carolina	43	37	40	41	57	42	42
North Dakota	1	0	1	1	1	2	5
Ohio	28	27	29	39	45	49	40
Oklahoma	186	184	177	170	175	195	193
Oregon	21	21	21	20	20	25	28
Pennsylvania	29	27	26	32	31	30	38
Rhode Island	1	5	2	4	3	2	0
South Carolina	18	20	16	19	14	16	27
South Dakota	9	12	8	8	11	5	5
Tennessee	67	65	66	80	88	89	103
Texas	11316	11233	11349	11316	11355	11616	11647
Utah	8	6	5	9	10	7	6
Vermont	1	0	2	3	3	2	1
Virginia	38	37	44	55	63	59	56
Washington	41	31	36	31	35	49	45
West Virginia	5	2	1	0	3	3	2
Wisconsin	17	23	17	19	13	18	23
Wyoming	6	4	6	10	12	11	6
<b>Total</b>	<b>13384</b>	<b>13307</b>	<b>13472</b>	<b>13479</b>	<b>13668</b>	<b>14057</b>	<b>14120</b>

Source: IRT

Enrollment by State  
Fall 2009



## Countries Represented by Nonresident Aliens, Fall 2003 to Fall 2009

	Fall	2003	2004	2005	2006	2007	2008	2009		Fall	2003	2004	2005	2006	2007	2008	2009
Albania		1	1	0	0	0	0	1	Korea, Rep. of		28	29	34	36	44	48	51
Angola		1	2	2	2	1	0	0	Kosovo		0	1	0	0	0	0	0
Argentina		5	4	2	1	0	1	2	Kuwait		1	0	0	0	0	0	0
Armenia		0	1	1	1	1	1	1	Latvia		2	2	1	1	0	0	0
Australia		3	4	1	4	5	1	3	Lebanon		2	1	1	0	1	1	0
Austria		1	0	0	0	0	0	0	Liberia		0	0	0	0	2	1	0
Azerbaijan		0	0	1	0	0	0	0	Malaysia		0	1	1	3	3	3	3
Bahamas		2	1	3	3	2	2	2	Mali		0	0	1	1	0	0	0
Bangladesh		2	2	1	2	1	0	1	Mexico		6	8	7	8	10	15	11
Barbados		0	0	0	0	1	1	0	Moldova		1	1	1	0	1	0	0
Belarus		1	1	0	0	0	0	0	Mongolia		1	1	1	1	0	0	0
Belgium		0	0	0	0	0	2	2	Montserrat		0	1	1	1	1	1	0
Belize		1	1	1	0	0	0	1	Namibia		0	0	0	0	0	1	0
Bolivia		1	3	3	1	1	1	0	Nepal		2	5	7	5	5	5	9
Bosnia-Herzegovina		0	0	0	0	0	0	1	Netherlands		0	0	0	0	0	1	1
Brazil		6	3	2	5	7	6	9	New Zealand		0	0	3	2	2	0	0
Bulgaria		4	6	2	3	2	1	1	Nicaragua		1	2	2	0	0	0	0
Cambodia		0	0	0	0	0	0	2	Nigeria		19	22	30	29	34	34	34
Cameroon		3	1	2	2	4	3	3	Norway		0	1	0	0	1	2	3
Canada		18	15	13	18	21	21	18	Pakistan		3	2	3	5	5	1	2
Cayman Islands		2	2	0	0	0	0	0	Panama		2	0	1	1	0	0	0
Chile		0	0	0	0	0	1	2	Peru		1	2	2	1	0	1	1
China*		72	70	67	68	90	99	110	Philippines		1	0	1	0	0	1	1
Colombia		2	2	7	9	9	7	7	Poland		2	2	2	1	2	2	2
Congo		0	1	1	1	0	0	1	Portugal		0	0	1	0	0	0	1
Costa Rica		8	8	7	1	0	0	0	Romania		6	6	2	3	3	1	2
Cote D'Ivoire		0	0	0	1	2	2	1	Russia		2	6	5	4	6	5	4
Croatia		2	1	0	0	0	1	2	Rwanda		1	1	1	0	0	0	0
Czech Republic		1	3	4	5	6	5	1	Senegal		0	0	1	2	2	1	1
Denmark		0	0	0	0	1	0	0	Serbia & Montenegro		0	0	1	1	3	2	2
Dominica		1	0	0	0	0	0	0	Sierra Leone		1	0	0	0	0	0	0
Ecuador		4	4	3	3	2	2	1	Singapore		1	1	1	0	0	1	1
El Salvador		0	1	2	3	3	4	4	Slovakia		1	2	2	4	4	2	3
Estonia		0	0	0	0	0	1	1	Slovenia		3	1	1	0	1	1	0
Ethiopia		0	0	1	1	1	1	1	Somalia		0	0	0	0	0	0	1
Finland		1	0	1	1	0	0	0	South Africa		5	1	1	2	1	1	1
France		6	8	4	3	3	4	5	Spain		3	2	1	0	1	1	1
Gabon		0	0	0	0	0	1	1	Sri Lanka		4	7	7	5	4	2	1
Georgia		2	0	0	0	0	0	1	St Vincent & Grenadines		1	1	1	0	0	0	0
Germany		7	8	7	7	6	6	11	Sweden		4	5	4	4	3	0	1
Ghana		3	3	2	4	6	8	6	Taiwan		25	17	12	15	14	8	8
Greece		0	1	1	0	0	0	0	Thailand		2	2	3	4	3	2	0
Grenada		0	0	0	0	0	1	1	Trinidad/Tobago		4	3	3	4	2	4	5
Guatemala		3	1	2	1	2	3	3	Turkey		2	1	1	0	2	3	1
Haiti		0	0	0	0	0	1	0	Uganda		2	2	2	1	1	1	1
Honduras		1	2	2	2	3	3	2	Ukraine		1	1	3	2	1	0	1
Hungary		4	1	1	1	1	2	1	United Kingdom		9	8	13	16	14	13	10
India		40	45	34	28	25	17	24	Uzbekistan		1	1	0	1	1	1	0
Indonesia		3	4	5	5	5	4	3	Venezuela		11	10	11	11	12	11	10
Iran		0	1	1	1	1	1	0	Vietnam		4	5	4	5	3	5	8
Italy		2	2	1	0	2	1	1	Virgin Islands (British)		1	1	1	2	1	1	0
Jamaica		0	0	0	0	1	1	1	Yemen (Sanaa)		1	1	0	0	0	0	0
Japan		9	10	13	13	13	12	8	Yugoslavia		1	0	0	0	0	0	0
Jordan		0	0	0	1	0	0	0	Zaire		0	0	0	0	1	1	0
Kazakhstan		1	0	0	0	0	0	0	Zambia		0	0	0	0	0	0	1
Kenya		3	6	5	4	5	4	3	Zimbabwe		1	2	2	3	3	1	0
Korea, Dem. People's		2	0	0	0	0	0	0	Unknown		1	0	0	0	4	0	1
									<b>Total</b>		<b>398</b>	<b>397</b>	<b>388</b>	<b>389</b>	<b>434</b>	<b>417</b>	<b>432</b>

\*Hong Kong counted in China.

**Headcount Enrollment by Unit  
Fall 2003 - Fall 2009**

Fall	2003	2004	2005	2006	2007	2008	2009
College of Arts & Sciences	7,035	7,257	7,301	7,129	7,034	7,111	7,089
School of Business	3,105	2,872	2,760	2,835	2,880	3,009	2,928
School of Education	1,246	1,105	1,169	1,229	1,272	1,294	1,322
School of Engineering & Computer Sci.	536	495	551	574	593	696	776
School of Music	347	335	340	358	366	369	371
School of Nursing	444	504	532	551	546	553	597
School of Social Work			121	175	214	206	208
Honors College	154	173	179	182	206	202	202
Institutes & Special Studies	126	129	76	67	73	78	82
Graduate School	10	7	10	9	9	13	9
School of Law	440	424	432	400	413	423	465
Truett Seminary	379	391	385	377	402	406	399
Graduate Military Programs	115	107	119	154	166	181	166
<b>TOTAL</b>	<b>13,937</b>	<b>13,799</b>	<b>13,975</b>	<b>14,040</b>	<b>14,174</b>	<b>14,541</b>	<b>14,614</b>

## Notes:

1. Headcount counts a student once in their primary program.
2. The enrollment for the Graduate School reflects students classified as "No Major."
3. The School of Social Work was established in 2005.

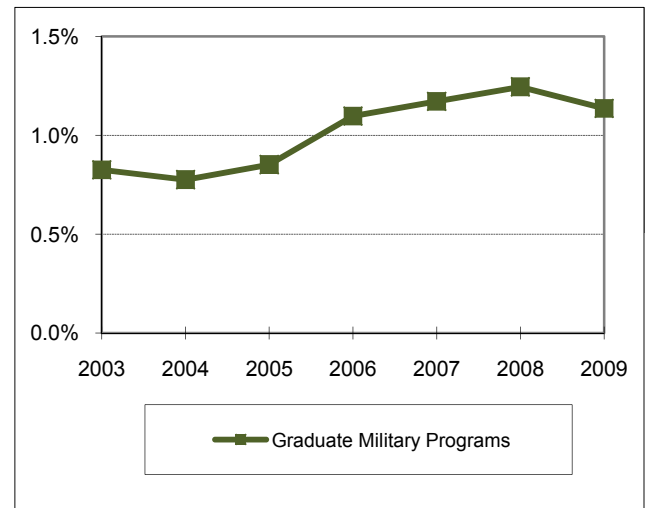
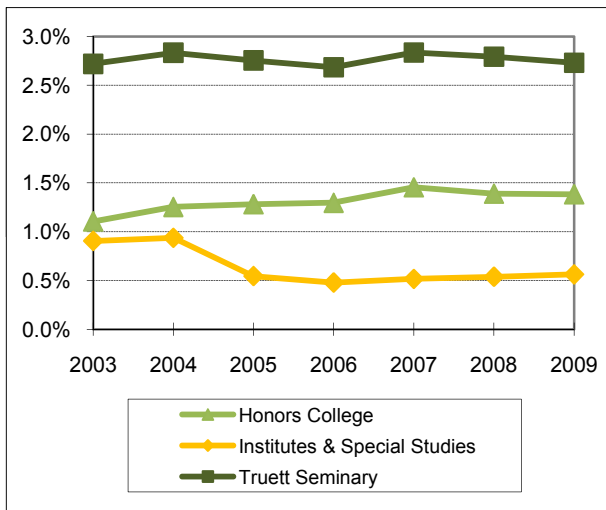
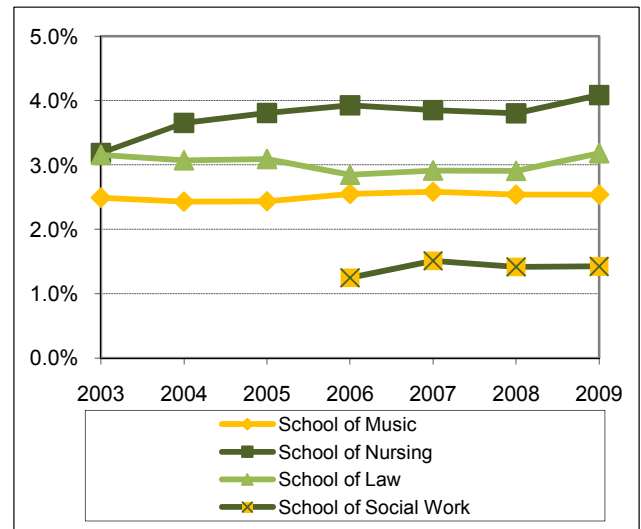
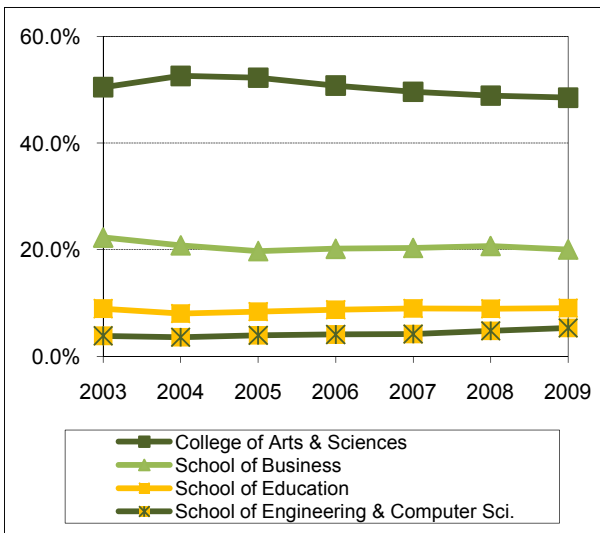
**Program Enrollment by Unit  
Fall 2003 - Fall 2009**

Fall	2003	2004	2005	2006	2007	2008	2009
College of Arts & Sciences	7,073	7,291	7,309	7,140	7,037	7,121	7,095
School of Business	3,161	2,948	2,815	2,904	2,962	3,090	3,016
School of Education	1,263	1,122	1,182	1,237	1,273	1,295	1,322
School of Engineering & Computer Sci.	536	496	556	575	594	700	784
School of Music	359	348	354	368	374	380	381
School of Nursing	444	504	532	551	546	553	597
School of Social Work			149	203	246	239	251
Honors College	154	173	179	182	206	202	202
Institutes & Special Studies	126	129	76	67	73	78	82
Graduate School	10	7	10	10	9	13	9
School of Law	440	424	432	400	413	423	465
Truett Seminary	382	393	387	379	403	407	399
Graduate Military Programs	115	107	119	154	166	181	166
<b>TOTAL</b>	<b>14,063</b>	<b>13,942</b>	<b>14,100</b>	<b>14,170</b>	<b>14,302</b>	<b>14,682</b>	<b>14,769</b>

## Notes:

1. Program Count counts a student in each program.
2. The enrollment for the Graduate School reflects students classified as "No Major."
3. The School of Social Work was established in 2005.

Headcount Enrollment Percentage by Unit  
Fall 2003 - Fall 2009



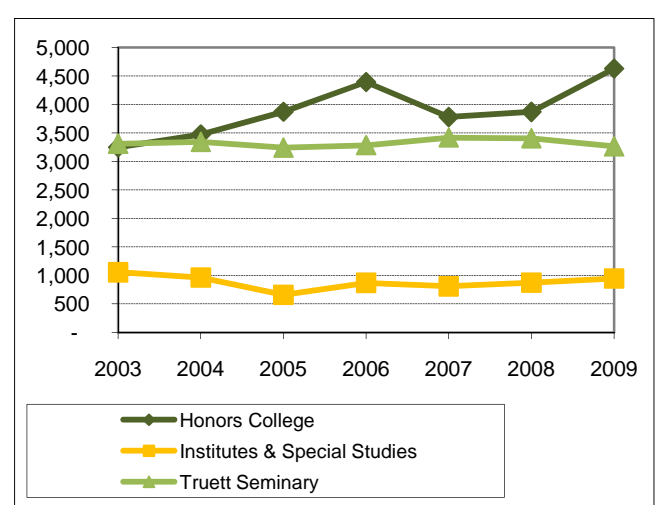
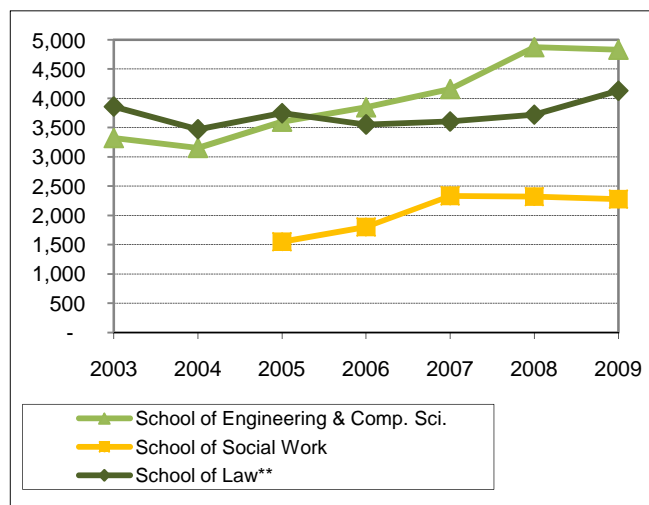
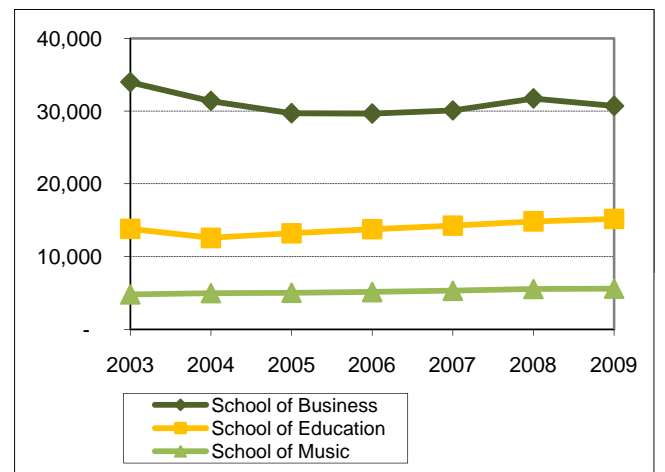
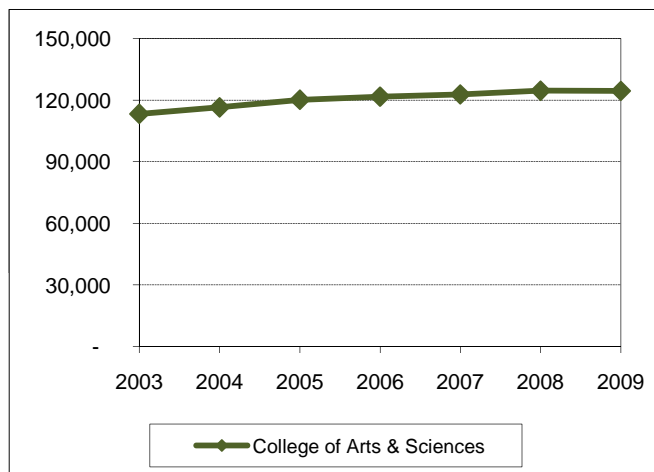
	Fall	2003	2004	2005	2006	2007	2008	2009
<b>College of Arts &amp; Sciences</b>		50.5%	52.6%	52.2%	50.8%	49.6%	48.9%	48.5%
<b>School of Business</b>		22.3%	20.8%	19.7%	20.2%	20.3%	20.7%	20.0%
<b>School of Education</b>		8.9%	8.0%	8.4%	8.8%	9.0%	8.9%	9.0%
<b>School of Engineering &amp; Computer Sci.</b>		3.8%	3.6%	3.9%	4.1%	4.2%	4.8%	5.3%
<b>School of Music</b>		2.5%	2.4%	2.4%	2.5%	2.6%	2.5%	2.5%
<b>School of Nursing</b>		3.2%	3.7%	3.8%	3.9%	3.9%	3.8%	4.1%
<b>School of Social Work</b>					1.2%	1.5%	1.4%	1.4%
<b>Honors College</b>		1.1%	1.3%	1.3%	1.3%	1.5%	1.4%	1.4%
<b>Institutes &amp; Special Studies</b>		0.9%	0.9%	0.5%	0.5%	0.5%	0.5%	0.6%
<b>Graduate School</b>		0.1%	0.1%	0.1%	0.1%	0.1%	0.1%	0.1%
<b>School of Law</b>		3.2%	3.1%	3.1%	2.8%	2.9%	2.9%	3.2%
<b>Truett Seminary</b>		2.7%	2.8%	2.8%	2.7%	2.8%	2.8%	2.7%
<b>Graduate Military Programs</b>		0.8%	0.8%	0.9%	1.1%	1.2%	1.2%	1.1%

Notes:

1. Headcount counts a student once in their primary program.

**Student Credit Hours by Unit\*  
(Excluding Military Programs)  
Fall 2003 - Fall 2009**

	Fall	2003	2004	2005	2006	2007	2008	2009
<b>College of Arts &amp; Sciences</b>		113,299	116,430	120,123	121,641	122,705	124,545	124,416
<b>School of Business</b>		33,980	31,387	29,696	29,645	30,081	31,733	30,707
<b>School of Education</b>		13,790	12,551	13,175	13,770	14,257	14,833	15,179
<b>School of Engineering &amp; Comp. Sci.</b>		3,321	3,153	3,601	3,847	4,159	4,874	4,831
<b>School of Music</b>		4,797	4,961	5,021	5,126	5,304	5,538	5,583
<b>School of Nursing</b>		3,479	4,107	4,235	4,209	4,215	4,443	4,638
<b>School of Social Work</b>				1,551	1,802	2,334	2,321	2,277
<b>Honors College</b>		3,249	3,474	3,872	4,394	3,780	3,870	4,630
<b>Institutes &amp; Special Studies</b>		1,056	963	660	870	809	874	947
<b>School of Law**</b>		3,857	3,470	3,745	3,553	3,604	3,721	4,128
<b>Truett Seminary</b>		3,311	3,343	3,242	3,284	3,419	3,406	3,262
<b>TOTAL</b>		184,139	183,839	188,921	192,141	194,667	200,158	200,598



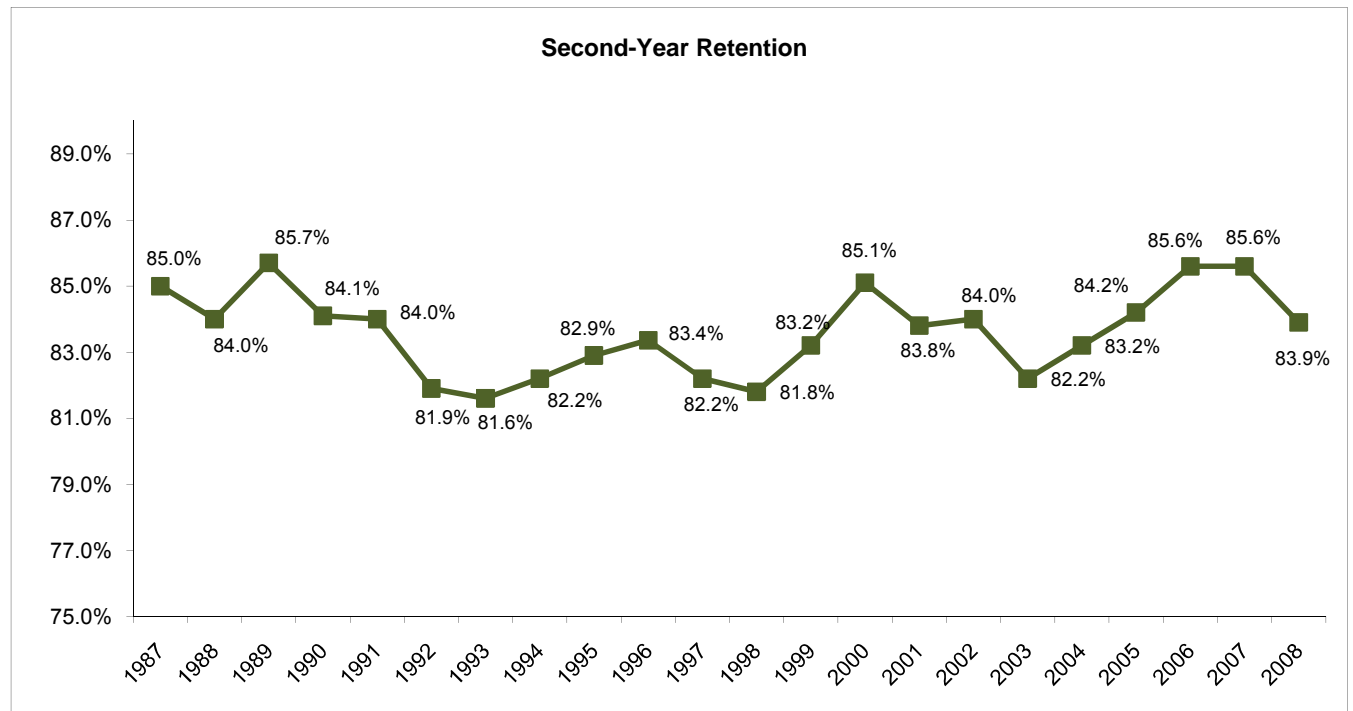
\*BIC courses have been credited to the department of the instructor.

\*\*Quarter hours converted to semester hours.



Retention of First-Time Freshman Classes Entering Fall 1988 - Fall 2008

First-Time Freshman Class of:	N	After 1 year		After 2 years		After 3 years			After 4 years			After 5 years			After 6 years		
		Cont.	Drop.	Cont.	Drop.	Cont.	Drop.	Grad.	Cont.	Drop.	Grad.	Cont.	Drop.	Grad.	Cont.	Drop.	Grad.
1987	2,313	85.0%	15.0%	75.6%	24.4%	71.7%	27.1%	1.2%	24.2%	28.2%	47.6%	3.4%	28.3%	68.3%	1.1%	28.2%	70.7%
1988	2,302	84.0%	16.0%	75.5%	24.5%	72.5%	26.5%	1.0%	29.8%	28.3%	41.9%	3.3%	28.5%	68.2%	0.8%	27.9%	71.3%
1989	2,357	85.7%	14.3%	74.8%	25.2%	71.2%	27.7%	1.1%	28.3%	28.9%	42.8%	3.9%	28.9%	67.2%	1.2%	28.8%	70.0%
1990	2,435	84.1%	15.9%	73.0%	27.0%	69.8%	29.0%	1.2%	28.1%	29.6%	42.3%	4.2%	30.0%	65.8%	1.6%	29.4%	69.0%
1991	2,156	84.0%	16.0%	74.5%	25.5%	70.7%	28.2%	1.1%	26.5%	29.6%	43.9%	3.8%	29.7%	66.5%	1.3%	29.0%	69.7%
1992	2,367	81.9%	18.1%	71.5%	28.5%	67.2%	31.5%	1.4%	28.4%	32.3%	39.3%	4.8%	32.0%	63.2%	0.9%	32.2%	66.9%
1993	2,433	81.6%	18.4%	72.0%	28.0%	68.4%	30.4%	1.2%	27.5%	32.3%	40.2%	4.5%	32.3%	63.2%	1.3%	31.8%	66.9%
1994	2,351	82.2%	17.8%	72.3%	27.7%	68.5%	30.1%	1.4%	27.0%	31.1%	41.9%	4.9%	31.9%	63.2%	1.5%	31.8%	66.7%
1995	2,339	82.9%	17.1%	76.0%	24.0%	71.4%	27.2%	1.4%	28.8%	28.3%	42.9%	4.4%	28.5%	67.1%	1.2%	28.0%	70.8%
1996	2,476	83.4%	16.6%	74.8%	25.2%	72.2%	26.9%	0.9%	29.4%	27.7%	42.9%	4.0%	27.6%	68.4%	1.3%	27.0%	71.7%
1997	2,410	82.2%	17.8%	73.7%	26.3%	70.3%	28.4%	1.2%	30.0%	29.9%	40.1%	4.9%	29.0%	66.1%	1.4%	28.5%	70.2%
1998	2,938	81.8%	18.2%	75.0%	25.0%	71.1%	27.1%	1.7%	28.9%	28.1%	43.0%	4.6%	29.4%	66.0%	1.4%	26.8%	71.9%
1999	2,772	83.2%	16.8%	75.5%	24.5%	70.7%	27.5%	1.8%	27.7%	27.0%	45.3%	3.9%	27.0%	69.1%	1.2%	26.8%	72.0%
2000	2,832	85.1%	14.9%	77.9%	22.1%	74.3%	25.0%	0.8%	26.4%	24.6%	49.0%	3.6%	24.9%	71.5%	1.1%	25.0%	73.9%
2001	2,801	83.8%	16.2%	75.7%	24.3%	73.3%	25.3%	1.4%	25.2%	26.8%	47.9%	3.5%	27.5%	69.0%	1.0%	27.4%	71.6%
2002	2,620	84.0%	16.0%	76.3%	23.7%	72.6%	25.5%	1.9%	22.7%	26.6%	50.7%	2.7%	26.7%	70.6%	0.8%	26.7%	72.6%
2003	2,678	82.2%	17.8%	74.5%	25.5%	70.6%	27.4%	1.9%	23.7%	28.9%	47.3%	3.6%	29.0%	67.4%	1.0%	28.9%	70.1%
2004	2,785	83.2%	16.8%	76.0%	24.0%	72.5%	26.0%	1.5%	22.4%	27.4%	50.2%	3.6%	28.0%	68.5%			
2005	3,168	84.2%	15.8%	77.1%	22.8%	71.9%	25.9%	2.1%	20.9%	27.3%	51.8%						
2006	2,783	85.6%	14.4%	78.0%	21.8%	74.3%	23.9%	1.8%									
2007	2,732	85.6%	14.4%	77.7%	22.2%												
2008	3,062	83.9%	16.1%														
Average		83.6%	16.4%	75.1%	24.9%	71.3%	27.3%	1.4%	26.6%	28.6%	44.8%	4.0%	28.8%	67.2%	1.2%	28.5%	70.4%
5-year Avg		84.1%	15.9%	76.7%	23.3%	72.4%	25.7%	1.8%	23.0%	27.4%	49.6%	3.4%	27.2%	69.4%	1.0%	27.0%	72.0%

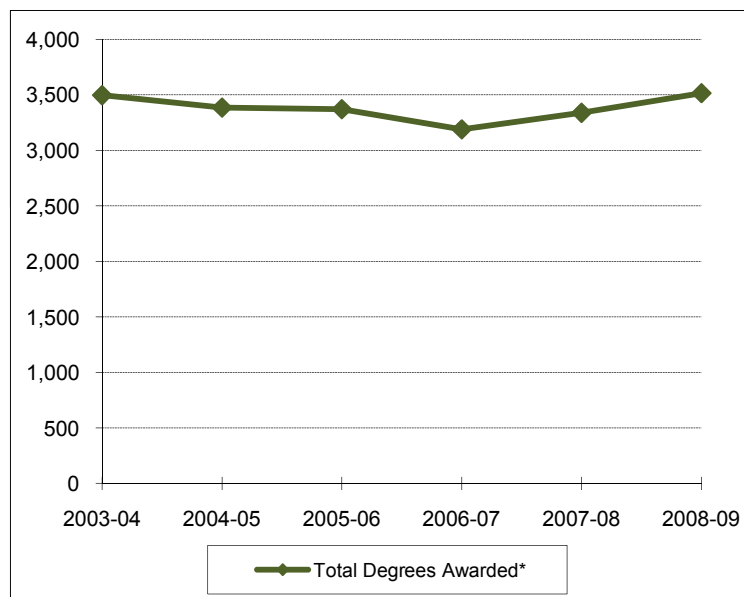
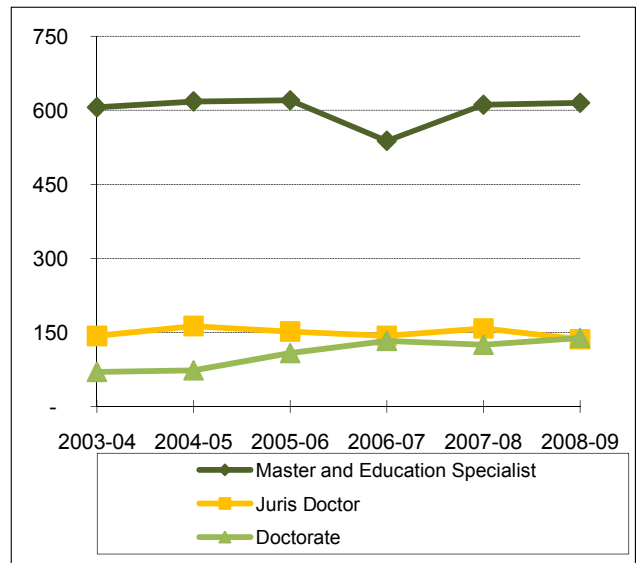
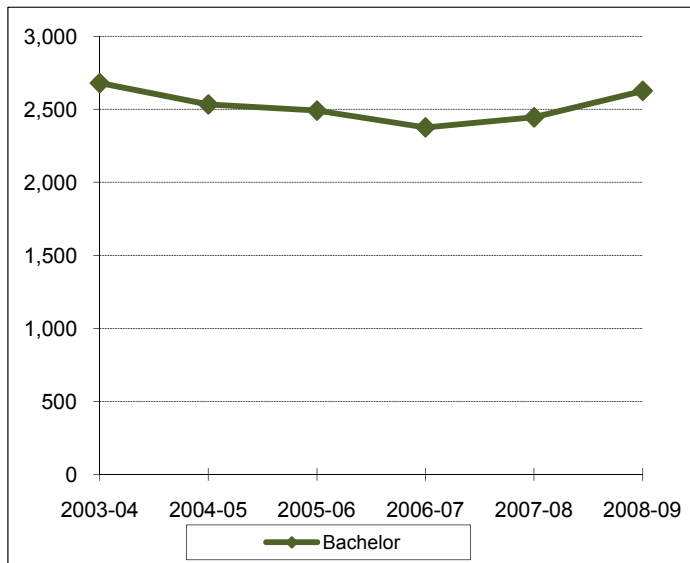


**Distribution of Degrees (Duplicated Count\*)  
2003-04 through 2008-09**

	2003-04	2004-05	2005-06	2006-07	2007-08	2008-09
Bachelor of Arts	1090	1084	1075	931	1042	1105
Bachelor of Business Administration	1019	909	821	761	760	757
Bachelor of Fine Arts	40	54	42	51	36	53
Bachelor of Music	27	39	36	33	34	34
Bachelor of Music Education	15	19	18	29	21	16
Bachelor of Science	229	261	270	289	306	371
Bachelor of Science in Aviation Sciences	10	6	13	8	6	4
Bachelor of Science in Computer Science	20	17	23	16	14	6
Bachelor of Science in Education	363	213	212	194	245	258
Bachelor of Science in Electrical & Computer Engineering	25	16	24	28	12	18
Bachelor of Science in Engineering	2	1	3	4	1	8
Bachelor of Science in Family & Consumer Sciences	102	87	77	100	87	83
Bachelor of Science in Informatics	16	12	11	9	6	9
Bachelor of Science in Mechanical Engineering	15	20	14	27	22	45
Bachelor of Science in Nursing	85	108	121	123	112	112
Bachelor of Social Work		2	13	19	36	38
<b>TOTAL BACHELOR DEGREES</b>	<b>3058</b>	<b>2848</b>	<b>2773</b>	<b>2622</b>	<b>2740</b>	<b>2917</b>
Int'l Masters of Environmental Science	0	0	0	0	2	2
Master of Accountancy	47	40	39	33	21	36
Master of Arts	77	74	67	71	62	64
Master of Business Administration	95	104	74	77	104	103
Master of Business Admin. in International Management	0	0	1	0	1	3
Master of Divinity	71	70	74	57	69	78
Master of Engineering			1	2	0	3
Master of Environmental Studies	2	2	3	1	1	3
Master of Fine Arts	1	2	2	3	3	3
Master of Health Administration	37	43	45	41	39	34
Master of International Journalism	2	2	1	2	2	2
Master of International Management	1	0	0	0	0	0
Master of Music	23	25	26	28	24	21
Master of Physical Therapy	17	16	0	0	0	0
Master of Public Policy and Administration	6	3	3	0	1	2
Master of Science	22	44	38	33	35	41
Master of Science in Biomedical Engineering			2	1	1	1
Master of Science in Clinical Psychology	11	11	7	4	5	6
Master of Science in Communication Sciences & Disorders	33	22	34	25	30	31
Master of Science in Economics	10	4	8	9	6	9
Master of Science in Education	77	80	97	74	93	60
Master of Science in Electrical/Computer Engineering		1	6	1	2	4
Master of Science in Information Systems	14	15	15	12	14	12
Master of Science in Mechanical Engineering			1	0	1	2
Master of Science in Nursing	21	15	20	15	14	14
Master of Social Work	25	32	39	30	63	57
Master of Taxation	10	11	13	11	10	12
Master of Theological Studies			2	4	4	8
<b>TOTAL MASTER'S DEGREES</b>	<b>602</b>	<b>616</b>	<b>618</b>	<b>534</b>	<b>605</b>	<b>609</b>
<b>TOTAL EDUCATION SPECIALIST DEGREES</b>	<b>4</b>	<b>2</b>	<b>2</b>	<b>7</b>	<b>4</b>	<b>4</b>
<b>TOTAL JURIS DOCTOR DEGREES</b>	<b>143</b>	<b>163</b>	<b>163</b>	<b>143</b>	<b>158</b>	<b>136</b>
Doctor of Education	23	22	26	10	6	4
Doctor of Ministry	3	5	5	8	5	5
Doctor of Philosophy	34	29	50	56	37	65
Doctor of Psychology	7	12	9	12	8	0
Doctor of Physical Therapy			14	43	62	53
Doctor of Science in Physical Therapy	3	5	4	4	3	5
Doctor of Science in Physician Asst Studies	0	0	0	0	4	7
<b>TOTAL DOCTORAL DEGREES</b>	<b>70</b>	<b>73</b>	<b>108</b>	<b>133</b>	<b>121</b>	<b>132</b>
<b>TOTAL DEGREES AWARDED</b>	<b>3877</b>	<b>3702</b>	<b>3664</b>	<b>3439</b>	<b>3628</b>	<b>3798</b>

\* Degree information on this page is reported beginning with the Summer semester and including the following Fall and Spring terms. An individual graduate with multiple majors is counted as a whole graduate in each major area of study (i.e., duplicated count).

**Summary of Degrees Awarded (Unduplicated Count\*)  
2003-04 through 2008-09**



Degree Level:	2003-04	2004-05	2005-06	2006-07	2007-08	2008-09
Bachelor	2,679	2,533	2,491	2,376	2,445	2,626
Master and Education Specialist	606	618	620	538	611	615
Juris Doctor	143	163	152	143	158	136
Doctorate	70	73	108	133	125	139
Total Degrees Awarded*	3,498	3,387	3,371	3,190	3,339	3,516

\*The information on this page indicates the number of degree recipients (i.e., unduplicated count). Degree information is reported beginning with the Summer semester and including the following Fall and Spring terms.

**Degree Programs  
(as of December 2009)**

Accounting (BBA)	Clinical Orthopaedics (DScPAS)	Environmental Science (MS)
Accounting (MAcc)	Clinical Psychology (MSCP)	Environmental Studies (BA)
Advanced Nursing Leadership (MSN)	Clinical Psychology (PsyD)	Environmental Studies (BS)
Air Science and Environment (IMES)	Collaborative Piano (MM)	Environmental Studies (MES)
American Studies (BA)	Communication Sci. & Disorders (BA)	Exercise, Nutrition and Preventive Health (PhD)
American Studies (MA)	Communication Sci. & Disorders (MA)	Exercise Physiology (BSEd)
Anthropology (BA)	Communication Sci. & Disorders (MSCSD)	Family Nurse Practitioners (MSN)
Anthropology (BS)	Communication Specialist (BA)	Fashion Design (BA)
Applied Mathematics (BS)	Communication Studies (MA)	Fashion Design (BSFCS)
Applied Music (BM)	Community Health (BSEd)	Fashion Merchandising (BA)
Architecture (BA)	Community Health Education (MPH)	Fashion Merchandising (BSFCS)
Art History (BA)	Composition (BM)	Film and Digital Media (BA)
Asian Studies (BA)	Composition (MM)	Finance (BBA)
Astronomy (BA)	Computer Science (BA)	Financial Services / Planning (BBA)
Astronomy (BS)	Computer Science (BSCS)	Forestry (BA)
Astrophysics (BA)	Computer Science Fellows (BSC)	Forestry (BS)
Astrophysics (BS)	Computer Science (MS)	French (BA)
Athletic Training (BSEd)	Conducting (MM)	General Family & Consumer Sci. (BA)
Aviation Sciences (BSAvSc)	Curriculum & Instruction (EdD)	General Family & Consumer Sci. (BSFCS)
Baylor Business Fellows (BBA)	Curriculum & Instruction (MA)	General Studies in HHPR (BSEd)
Biblical & Related Languages (BA)	Curriculum & Instruction (MSEd)	Geography (BA)
Biochemistry (BA)	Curriculum & Instruction (PhD)	Geology (BS)
Biochemistry (BS)	Dentistry (BA)	Geology (MS)
Bioinformatics (BSI)	Dentistry (BS)	Geology (PhD)
Biology (BA)	Directing (MFA)	Geophysics (BS)
Biology (BS)	Distribution Management/Technology (BBA)	German (BA)
Biology (MA)	Earth Science (BA)	Great Texts of the Western Tradition (BA)
Biology (MS)	Earth Science (MA)	Greek (BA)
Biology (PhD)	Ecological, Earth & Environmental Sciences (PhD)	Health Care Administration (MHA)
Biomedical Engineering (MSBME)	Economics (BA)	Health, Human Performance & Recreation (MSEd)
Biomedical Studies (MS)	Economics (BBA)	Health Science Studies (BSEd)
Biomedical Studies (PhD)	Economics (BS)	Higher Education & Student Affairs (MSEd)
Business Administration (MBA)	Economics (MSEco)	History (BA)
Business for Secondary Education (BBA)	Education (MA)	History (MA)
Business French (BBA)	Educational Administration (EdS)	Human Resources Management (BBA)
Business German (BBA)	Educational Administration (MSEd)	Information Systems (BBA)
Business - Journalism (BBA)	Educational Psychology (MA)	Information Systems (MSIS)
Business Russian (BBA)	Educational Psychology (MSEd)	Information Systems (PhD)
Business Spanish (BBA)	Educational Psychology (PhD)	Instrumental Music (BME)
Chemistry (BA)	Electrical & Computer Engineering (BSECE)	Interior Design (BA)
Chemistry (BS)	Electrical & Computer Engineering (MSECE)	Interior Design (BSFCS)
Chemistry (MS)	Elementary Education (BSEd)	International Business (BBA)
Chemistry (PhD)	Emergency Medicine (DScPAS)	International Economics (MA)
Child & Family Studies (BA)	Engineering (BSE)	International Economics (MS)
Child & Family Studies (BSFCS)	Engineering (ME)	International Journalism (MIJ)
Choral Music (BME)	English (BA)	International Management (MBA)
Church Music (BM)	English (MA)	International Relations (MA)
Church Music (MM)	English (PhD)	International Studies (BA)
Church-State Studies (MA)	Entrepreneurship (BBA)	Journalism (BA)
Church-State Studies (PhD)	Environmental Biology (MS)	Journalism (MA)
Classics (BA)	Environmental Health Science (BS)	Language and Linguistics (BA)
Clinical Laboratory Science (BS)	Environmental Science (BS)	Latin American Studies (BA)

Latin (BA)	Political Science (MA)
Law (JD)	Political Science (PhD)
Limnology (MSL)	Professional Selling (BBA)
Management (BBA)	Professional Writing (BA)
Marketing (BBA)	Psychology (BA)
Mathematics (BA)	Psychology (BS)
Mathematics (BS)	Psychology (PhD)
Mathematics (MS)	Public Administration (BBA)
Mathematics (PhD)	Public Policy & Administration (MPPA)
Mechanical Engineering (BSME)	Real Estate (BBA)
Mechanical Engineering (MSME)	Recreation (BSEd)
Media Business (BBA)	Religion (BA)
Medical Humanities (BA)	Religion (MA)
Medicine (BA)	Religion (PhD)
Medicine (BS)	Religion, Politics and Society (PhD)
Middle Grades English Lang Arts Reading (BSEd)	Risk Management and Insurance (BBA)
Middle Grades Mathematics (BSEd)	Russian (BA)
Middle Grades Science (BSEd)	School Psychology (EdS)
Middle Grades Social Studies (BSEd)	Secondary English Lang Arts Reading (BSEd)
Ministry (DMin)	Secondary Life Sciences (BSEd)
Museum Studies (MA)	Secondary Mathematics (BSEd)
Music (BA)	Secondary Physical Sciences (BSEd)
Music Education (MM)	Secondary Social Studies (BSEd)
Music History & Literature (BM)	Slavic and East European Studies (BA)
Music History & Literature (MM)	Social Work (BSW)
Music Theory (MM)	Social Work (MSW)
Neonatal Nurse Practitioner (MSN)	Sociology (BA)
Neuroscience (BS)	Sociology (MA)
Neuroscience (MA)	Sociology (PhD)
Nurse-Midwifery (DNP)	Spanish All-Level (BSEd)
Nursing (BSN)	Spanish (BA)
Nutrition (MS)	Spanish (MA)
Nutrition Sciences (BA)	Special Education All-Level (BSEd)
Nutrition Sciences (BS)	Speech Communication (BA)
Nutrition Sciences (BSFCS)	Sports, Sponsorship & Sales (BBA)
Occupational Therapy (DScOT)	Statistics (BS)
Optometry (BA)	Statistics (MS)
Optometry (BS)	Statistics (PhD)
Pedagogy (BM)	Studio Art (BA)
Performance (MM)	Studio Art (BFA)
Philosophy (BA)	Taxation (MT)
Philosophy (MA)	Theater Arts (BA)
Philosophy (PhD)	Theater Arts (MA)
Physical Education All-Level (BSEd)	Theater Design (BFA)
Physical Therapy (DPT)	Theater Performance (BFA)
Physical Therapy (DScPT)	Theological Studies (MTS)
Physics (BA)	Theology (MDiv)
Physics (BS)	Theory (BM)
Physics (MA)	University Scholars (BA)
Physics (MS)	
Physics (PhD)	
Piano Pedagogy & Performance (MM)	
Political Science (BA)	

**Profile of First-Time Freshmen  
Fall 2003 - Fall 2009**

	2003	2004	2005	2006	2007	2008	2009
New Freshmen Enrollment	2678	2785	3168	2783	2732	3062	3098
Men	37.4%	39.6%	41.0%	38.3%	40.6%	41.1%	41.1%
Women	62.6%	60.4%	59.0%	61.7%	59.4%	58.9%	58.9%
African American / Black	9.1%	8.4%	9.0%	6.4%	7.6%	7.9%	9.8%
Alaskan Native / Amer. Indian	0.7%	0.6%	0.8%	0.7%	0.4%	1.0%	0.6%
Asian / Pacific Islander	6.0%	8.2%	7.8%	6.2%	8.5%	7.7%	7.7%
Hispanic	8.2%	10.6%	11.0%	9.2%	10.5%	12.7%	14.9%
White	73.1%	69.7%	69.4%	75.9%	71.2%	68.5%	63.9%
Other	1.5%	2.4%	2.0%	1.5%	1.8%	2.1%	2.1%
Not Specified/Unknown	1.4%	0.1%	0.1%	0.0%	0.0%	0.0%	0.9%
Residence							
Texas	80.8%	81.4%	81.2%	79.8%	77.9%	81.0%	79.8%
Out-of-State	18.2%	17.3%	17.6%	18.8%	20.6%	17.6%	18.5%
Foreign	0.9%	1.1%	1.1%	1.1%	1.4%	1.2%	1.5%
Unknown	0.1%	0.2%	0.1%	0.3%	0.1%	0.2%	0.2%
Average SAT Score (1)							
Number of Students	1808	1931	2284	1860	1801	2015	1808
Total SAT	1179	1190	1196	1213	1219	1210	1190
English	583	589	593	599	602	596	586
Math	596	601	604	614	617	614	604
Writing (2)				586	587	584	571
Average ACT Score (1)							
Number of Students	870	853	884	923	931	1046	1290
Composite	24.2	24.8	24.6	25.2	25.7	25.4	25.9
Reading	25.2	26.0	25.9	26.4	26.7	26.3	26.8
Math	23.3	23.8	23.6	24.5	25.0	24.9	25.3
Science	23.4	24.0	23.7	24.2	24.6	24.5	25.0
English	24.1	24.8	24.6	25.1	25.8	25.5	26.0
Writing (2)				24.2	24.8	24.5	24.2
High School Class Quartile							
First Quartile	60.4%	60.0%	60.4%	61.3%	65.9%	60.9%	62.7%
Second Quartile	21.4%	21.2%	20.9%	20.1%	15.7%	19.5%	19.3%
Third Quartile	7.3%	7.3%	6.8%	5.2%	4.4%	4.1%	3.8%
Fourth Quartile	1.8%	1.3%	1.5%	0.8%	0.5%	0.4%	0.4%
No Rank	9.1%	10.2%	10.5%	12.6%	13.6%	15.1%	13.8%
Average Credit Hour Load	14.6	14.6	14.5	14.8	14.9	14.8	14.7

## Notes:

1. In this table, the highest SAT score is compared to the highest ACT score for each student, and only the better is retained.
2. The ACT and SAT writing scores are not currently included in admissions decisions.

Source: IRT

**Profile of Undergraduate Transfers  
Fall 2003 - Fall 2009**

	2003	2004	2005	2006	2007	2008	2009
Transfer Enrollment	420	425	422	494	452	404	422
Men	46.2%	44.9%	45.7%	43.9%	44.0%	41.1%	41.5%
Women	53.8%	55.1%	54.3%	56.1%	56.0%	58.9%	58.5%
African American / Black	9.3%	11.1%	9.0%	8.9%	11.3%	9.9%	12.1%
Alaskan Native / Amer. Indian	1.7%	0.7%	0.0%	0.8%	0.9%	0.7%	1.4%
Asian / Pacific Islander	6.2%	7.3%	8.8%	6.1%	6.6%	8.2%	7.3%
Hispanic	11.7%	10.8%	13.7%	15.2%	11.5%	11.9%	14.7%
White	65.2%	67.1%	66.4%	65.8%	67.3%	66.6%	61.4%
Other	3.3%	3.1%	1.9%	3.0%	2.4%	2.7%	2.4%
Not Specified/Unknown	2.6%	0.0%	0.2%	0.2%	0.0%	0.0%	0.7%
Residence							
Texas	80.2%	84.0%	81.8%	83.8%	82.1%	77.5%	83.6%
Out-of-State	16.7%	12.2%	12.6%	11.9%	14.6%	16.1%	6.9%
Foreign	2.9%	3.3%	5.2%	3.6%	2.9%	6.4%	5.2%
Unknown	0.2%	0.5%	0.5%	0.6%	0.4%	0.0%	0.0%
Average SAT Score (1,2)							
Number of Students	126	136	146	149	168	137	134
Total SAT	1082	1077	1074	1100	1099	1115	1069
English	537	536	529	546	552	548	530
Math	545	541	546	555	548	566	540
Writing (3)					546	541	523
Average ACT Score (1,2)							
Number of Students	77	95	63	96	77	86	117
Composite	21.9	21.1	22.8	22.9	22.5	23.3	22.9
Reading	22.7	21.7	23.9	23.9	23.6	24.3	23.7
Math	20.6	20.4	21.7	22.2	21.3	22.9	22.5
Science	21.8	21.4	22.7	22.4	21.6	22.5	21.8
English	21.6	20.6	22.5	22.7	22.8	22.7	23.1
Writing (3)						22.3	23.1
High School Class Quartile							
First Quartile	17.6%	18.4%	20.1%	18.4%	19.9%	23.0%	34.4%
Second Quartile	13.1%	14.8%	13.3%	12.8%	17.5%	16.3%	19.9%
Third Quartile	9.0%	8.2%	7.1%	6.5%	9.7%	8.4%	14.0%
Fourth Quartile	2.1%	3.8%	1.9%	3.2%	2.2%	2.2%	4.7%
No Rank	58.1%	54.8%	57.6%	59.1%	50.7%	50.0%	27.0%
Average Credit Hour Load	14.1	14.1	14.3	14.3	14.5	14.3	14.4

## Notes:

1. Transfer students with strong credentials from their previous academic work are not required to submit entrance test scores to the university.
2. In this table, the highest SAT score is compared to the highest ACT score for each student, and only the better is retained.
3. The ACT and SAT writing scores are not currently included in admissions decisions.

Source: IRT

**Profile of Undergraduate Students  
Fall 2003 - Fall 2009**

	2003	2004	2005	2006	2007	2008	2009
Undergraduate Student Enrollment	11712	11580	11825	11831	11902	12162	12149
Men	41.7%	41.6%	41.5%	40.6%	41.5%	41.8%	41.5%
Women	58.3%	58.4%	58.5%	59.4%	58.5%	58.2%	58.5%
African American / Black	0.0%	7.3%	8.0%	7.8%	7.8%	7.8%	8.1%
Alaskan Native / Amer. Indian	0.0%	0.6%	0.6%	0.6%	0.6%	0.8%	0.7%
Asian / Pacific Islander	0.0%	6.8%	7.3%	7.4%	7.8%	7.6%	7.7%
Hispanic	0.0%	8.6%	9.8%	9.9%	10.4%	10.7%	11.6%
White	0.0%	74.3%	72.1%	72.2%	71.3%	71.1%	69.5%
Other	0.0%	2.4%	2.2%	2.0%	2.1%	2.0%	2.0%
Not Specified/Unknown	0.0%	0.0%	0.0%	0.0%	0.0%	0.0%	0.3%
Residence							
Texas	82.8%	82.8%	82.4%	81.8%	81.2%	80.9%	80.8%
Out-of-State	15.2%	15.2%	15.4%	15.9%	16.7%	17.1%	17.2%
Foreign	1.6%	1.6%	1.6%	1.6%	1.8%	1.8%	1.9%
Unknown	0.4%	0.4%	0.6%	0.6%	0.3%	0.2%	0.2%
Average SAT Score (1)							
Number of Students	7,336	7,342	7,507	7,405	7,507	7,707	7,276
Total SAT	1174	1179	1185	1195	1202	1205	1203
English	579	582	586	590	594	595	593
Math	595	596	599	605	608	610	610
Writing (2)				582	585	585	582
Average ACT Score (1)							
Number of Students	3,656	3,522	3,567	3,648	3,650	3,761	4,255
Composite	24.2	24.4	24.5	24.6	24.9	25.1	25.6
Reading	25.3	25.5	25.6	25.7	26.0	26.2	26.5
Math	23.2	23.4	23.5	23.7	24.1	24.4	25.0
Science	23.5	23.7	23.7	23.7	24.0	24.2	24.6
English	24.1	24.3	24.4	24.5	24.9	25.1	25.7
Writing (2)				24.3	24.6	24.5	24.4
High School Class Quartile							
First Quartile	56.6%	56.3%	55.9%	55.4%	57.2%	57.5%	58.6%
Second Quartile	21.6%	21.2%	20.6%	19.3%	18.3%	18.3%	18.1%
Third Quartile	6.5%	6.6%	6.5%	6.0%	5.7%	5.5%	5.1%
Fourth Quartile	2.4%	2.0%	1.7%	1.4%	1.0%	0.8%	0.8%
No Rank	12.8%	14.0%	15.3%	17.9%	17.8%	17.9%	17.4%
Average Credit Hour Load	14.2	14.4	14.6	14.8	14.9	14.9	14.9

## Notes:

1. In this table, the highest SAT score is compared to the highest ACT score for each student, and only the better is retained.
2. The ACT and SAT writing scores are not currently included in admissions decisions.

Source: IRT



**Profile of Students in the Graduate School  
Fall 2003 - Fall 2009**

	2003	2004	2005	2006	2007	2008	2009
Graduate School Enrollment	1291	1297	1171	1221	1213	1285	1468
Men	50.5%	51.5%	50.7%	48.8%	50.4%	49.2%	51.2%
Women	49.5%	48.5%	49.3%	51.2%	49.6%	50.8%	48.8%
African American / Black	4.6%	4.8%	5.1%	4.8%	4.5%	4.2%	4.2%
Alaskan Native / Amer. Indian	0.5%	0.5%	0.9%	0.8%	0.8%	0.9%	0.8%
Asian / Pacific Islander	10.7%	12.0%	12.7%	11.4%	12.6%	11.9%	11.6%
Hispanic	6.7%	7.0%	6.7%	6.1%	6.4%	7.4%	6.9%
White	69.1%	72.7%	71.9%	73.5%	72.5%	73.0%	73.8%
Other	2.9%	2.8%	2.6%	3.4%	2.9%	2.6%	2.0%
Not Specified/Unknown	5.7%	0.2%	0.2%	0.1%	0.2%	0.0%	0.7%
Classification							
Master's Candidate	65.5%	64.3%	57.8%	59.0%	58.1%	58.3%	61.0%
Doctoral Candidate	33.1%	34.3%	40.4%	38.7%	39.8%	39.1%	36.9%
Graduate Other	0.7%	0.8%	0.9%	1.5%	1.3%	1.6%	1.6%
Non-Degree GR	0.8%	0.5%	0.9%	0.7%	0.7%	1.0%	0.6%
Average GRE Score							
Number of Students	1020	1041	972	998	975	1005	1048
Total *	1104	1120	1141	1158	1173	1175	1185
Verbal	514	515	522	532	538	536	541
Quantitative	591	605	618	627	635	638	643
Analytical Writing	570	581	589	601	609	599	622
Average GMAT Score							
Number of Students	141	131	94	114	113	119	217
Total	591	588	582	577	577	586	597
Verbal	33	33	32	32	32	33	34
Quantitative	38	37	38	38	37	38	38
Dual Program Students							
Undergraduate/Graduate	3.7%	5.0%	3.9%	3.1%	2.7%	3.3%	3.5%
Graduate/Graduate	0.9%	0.9%	1.8%	1.4%	1.2%	1.2%	0.6%
Law/Graduate	0.2%	0.1%	0.1%	0.2%	0.3%	0.5%	0.4%
Seminary/Graduate	4.8%	4.9%	2.3%	1.6%	0.7%	1.1%	0.8%
Average Credit Hour Load	7.8	7.6	7.3	7.6	7.7	7.7	7.9

## Notes:

1. Social Work became a separate school in 2005-06.
2. With the exception of the Graduate/Graduate dual programs, students in dual career programs are NOT counted in headcounts as graduate students.
3. Starting in Fall 2009, we began using program count.

\* Total GRE = Verbal + Quantitative

Source: IRT

**Profile of Students in the School of Social Work  
Fall 2003 - Fall 2009**

	2003	2004	2005	2006	2007	2008	2009
School of Social Work Enrollment			43	57	78	84	122
Men			7.0%	14.0%	11.5%	11.9%	18.0%
Women			93.0%	86.0%	88.5%	88.1%	82.0%
African American / Black			7.0%	10.5%	11.5%	9.5%	9.0%
Alaskan Native / Amer. Indian			0.0%	0.0%	1.3%	1.2%	2.5%
Asian / Pacific Islander			0.0%	1.8%	2.6%	4.8%	5.7%
Hispanic			0.0%	5.3%	7.7%	9.5%	9.8%
White			90.7%	82.5%	75.6%	71.4%	68.0%
Other			2.3%	0.0%	1.3%	3.6%	4.9%
Not Specified/Unknown			0.0%	0.0%	0.0%	0.0%	0.0%
Full-Time/Part-Time Status							
Full-Time			88.4%	87.7%	91.0%	91.7%	94.3%
Part-Time			11.6%	12.3%	9.0%	8.3%	5.7%
Classification							
Master's Candidate			100.0%	100.0%	100.0%	100.0%	100.0%
Enrollee Type							
Entering Graduate Student			76.7%	77.2%	56.4%	71.4%	46.7%
Continuing Student			23.3%	22.8%	43.6%	28.6%	43.4%
Entering Seminary Student							9.8%
Dual Program Students							
Seminary/Social Work			65.1%	49.1%	41.0%	39.3%	35.2%
Average Credit Hour Load			12.9	12.8	14.0	13.8	13.6

Notes:

1. Social Work became a separate school in 2005-06.
2. Starting in Fall 2009, we began using program count.

Source: IRT

**Profile of Law Students  
Fall 2003 - Fall 2009**

	2003	2004	2005	2006	2007	2008	2009
Law School Enrollment	440	424	432	400	413	423	465
Men	55.7%	53.3%	54.6%	56.8%	60.5%	56.5%	52.9%
Women	44.3%	46.7%	45.4%	43.3%	39.5%	43.5%	47.1%
African American / Black	0.5%	0.5%	1.2%	1.3%	1.0%	1.2%	2.6%
Alaskan Native / Amer. Indian	0.5%	0.2%	1.2%	0.3%	0.0%	0.2%	0.2%
Asian / Pacific Islander	4.5%	4.7%	4.9%	6.3%	5.3%	7.3%	9.0%
Hispanic	6.4%	4.2%	3.9%	4.0%	4.1%	3.8%	7.5%
White	88.2%	88.9%	86.8%	86.0%	87.9%	85.8%	78.9%
Other	0.0%	1.4%	2.1%	2.3%	1.7%	1.7%	1.5%
Not Specified/Unknown	0.0%	0.0%	0.0%	0.0%	0.0%	0.0%	0.2%
Classification							
Juris Doctorate	99.8%	100.0%	100.0%	99.5%	99.5%	100.0%	100.0%
Non-Degree LW	0.2%	0.0%	0.0%	0.5%	0.5%	0.0%	0.0%
Enrollee Type							
Entering Law Student	29.3%	15.1%	19.0%	17.5%	16.7%	18.9%	18.5%
Continuing Student	70.7%	84.9%	81.0%	82.0%	82.8%	81.1%	81.5%
Other	0.0%	0.0%	0.0%	0.5%	0.5%	0.0%	0.0%
Average LSAT Score	158	159	160	161	160	160	159
Number of Students	422	407	416	363	380	395	375
Full-Time/Part-Time Status							
Full-Time	99.5%	97.6%	97.5%	98.3%	99.3%	98.3%	97.6%
Part-Time	0.5%	2.4%	2.5%	1.8%	0.7%	1.7%	2.4%
Dual Program Students							
Law/Graduate	0.5%	0.2%	0.2%	0.8%	1.0%	1.4%	1.3%
Average Credit Hour Load	13.2	13.0	13.0	13.3	13.1	13.2	13.3

**Profile of Seminary Students  
Fall 2003 - Fall 2009**

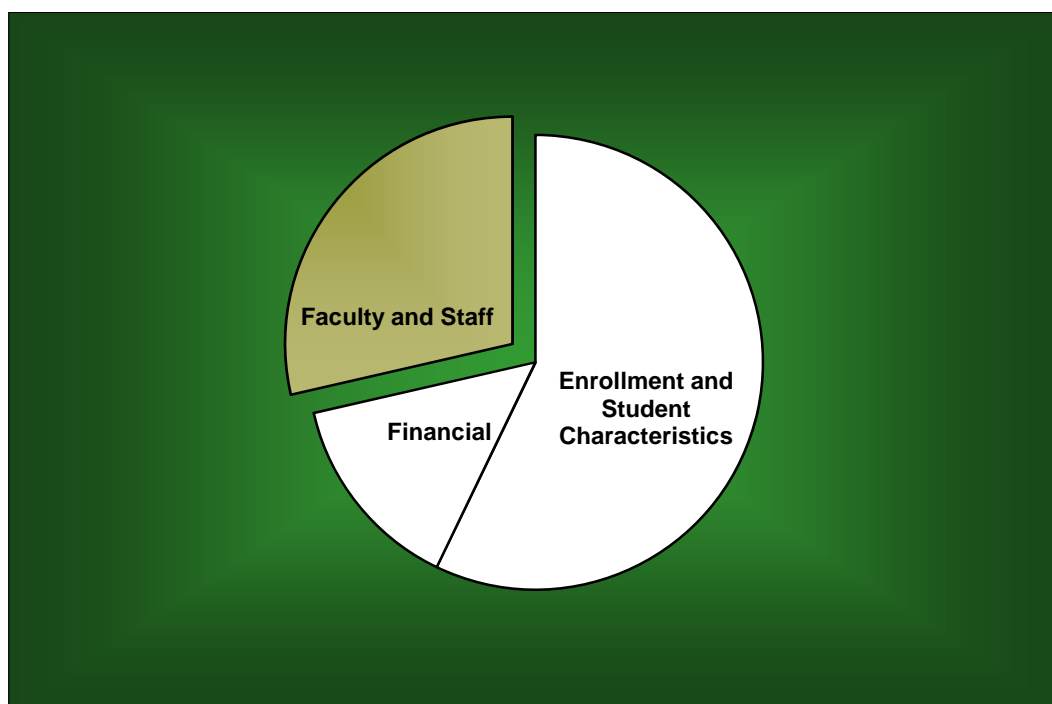
	2003	2004	2005	2006	2007	2008	2009
Seminary Enrollment	379	391	385	377	402	406	399
Men	65.7%	66.0%	67.5%	70.3%	70.4%	69.2%	64.9%
Women	34.3%	34.0%	32.5%	29.7%	29.6%	30.8%	35.1%
African American / Black	5.0%	6.9%	7.5%	9.3%	10.4%	12.8%	12.8%
Alaskan Native / Amer. Indian	0.3%	0.5%	0.5%	0.3%	0.5%	0.5%	0.8%
Asian / Pacific Islander	3.2%	1.8%	1.3%	2.1%	2.7%	1.7%	2.8%
Hispanic	6.1%	6.9%	6.5%	8.2%	7.5%	7.9%	6.8%
White	83.1%	81.8%	83.4%	79.3%	78.1%	76.4%	74.7%
Other	0.5%	2.0%	0.8%	0.5%	0.7%	0.7%	2.3%
Not Specified/Unknown	1.8%	0.0%	0.0%	0.3%	0.0%	0.0%	0.0%
Classification							
Seminary Masters	88.9%	88.2%	89.4%	88.6%	90.8%	90.4%	91.2%
Seminary Doctoral	10.8%	11.0%	10.1%	11.1%	9.0%	9.4%	8.8%
Non-Degree SM	0.3%	0.8%	0.5%	0.3%	0.2%	0.2%	0.0%
Enrollee Type							
Continuing Student	72.0%	71.1%	73.8%	76.9%	76.6%	76.6%	80.2%
Entering Seminary Student	27.7%	28.9%	26.2%	23.1%	23.4%	23.4%	19.8%
Other	0.3%	0.0%	0.0%	0.0%	0.0%	0.0%	0.0%
Full-Time/Part-Time Status							
Full-Time	77.6%	78.3%	77.4%	81.4%	80.3%	77.1%	76.7%
Part-Time	22.4%	21.7%	22.6%	18.6%	19.7%	22.9%	23.3%
Dual Program Students							
Seminary/Graduate	16.4%	16.1%	7.0%	5.0%	2.2%	3.4%	3.0%
Seminary/Social Work	0.0%	0.0%	7.3%	7.4%	8.0%	8.1%	10.8%
Undergraduate/Seminary	0.5%	0.5%	0.5%	0.3%	0.0%	0.0%	0.0%
Average Credit Hour Load	9.6	9.6	9.5	9.5	9.3	9.2	9.3

## Notes:

1. Students classified as Undergraduate/Seminary are counted as Undergraduates and are included in this table for informational purposes only.
2. Starting in Fall 2009, we began using program count.

## ***Faculty and Staff***

---



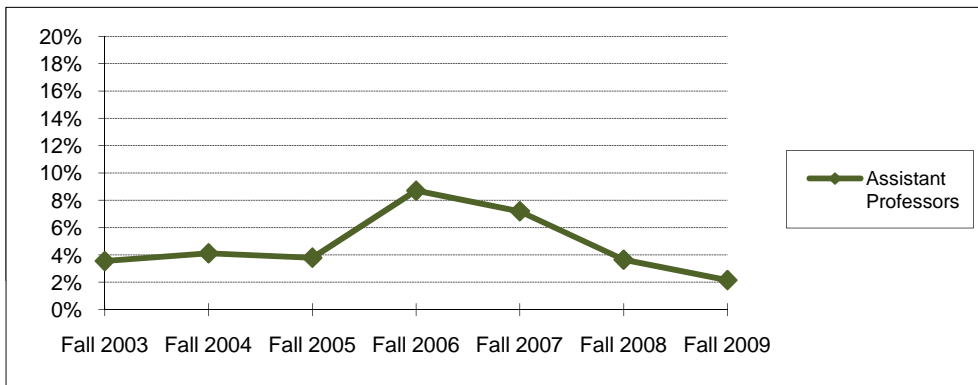
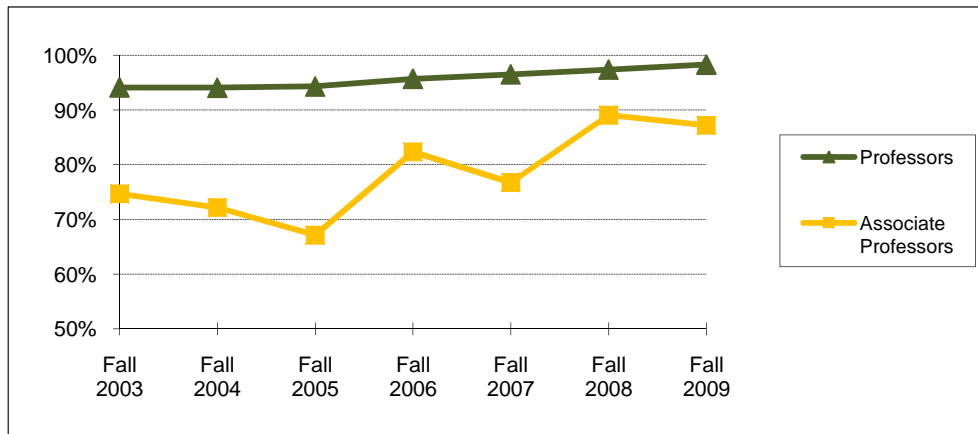
**Full-Time Faculty Positions (AAUP Definition)  
Fall 2003 - Fall 2009**

Rank	Fall 2003		Fall 2004		Fall 2005		Fall 2006		Fall 2007		Fall 2008		Fall 2009	
	Male	Female	Male	Female	Male	Female	Male	Female	Male	Female	Male	Female	Male	Female
<b>Professors:</b>														
<b>Number</b>	210	29	205	32	197	32	198	35	195	36	195	36	198	39
<b>Tenured</b>	196	29	191	32	186	30	188	35	187	36	189	36	195	38
<b>Associate Prof.:</b>														
<b>Number</b>	105	49	108	43	108	44	124	46	131	54	139	62	147	64
<b>Tenured</b>	75	40	74	35	68	34	100	40	100	42	123	56	129	55
<b>Assistant Prof:</b>														
<b>Number</b>	99	70	102	68	98	60	84	54	96	57	83	54	81	58
<b>Tenured</b>	2	4	3	4	2	4	5	7	4	7	2	3	1	2
<b>Instructors:</b>														
<b>Number</b>	0	0	0	1	0	1	0	1	0	1	0	1	0	1
<b>Tenured</b>	0	0	0	1	0	1	0	1	0	1	0	1	0	1
<b>Senior Lecturers:</b>														
<b>Number</b>	22	38	21	37	21	33	21	33	27	38	32	52	44	65
<b>Lecturers:</b>														
<b>Number</b>	62	93	64	89	70	91	75	96	78	100	70	99	67	95
<b>Total Number</b>	498	279	500	270	494	261	502	265	527	286	519	304	537	322
<b>Total Tenured</b>	273	73	268	72	256	69	293	83	291	86	314	96	325	96

**Highest Degree Earned by Full-Time Faculty  
Fall 2003 - Fall 2009**

	Fall 2003	Fall 2004	Fall 2005	Fall 2006	Fall 2007	Fall 2008	Fall 2009
<b>Associate's</b>	1	1	0	0	0	0	0
<b>Bachelor's</b>	2	2	6	5	3	2	2
<b>Master's</b>	222	213	200	180	190	201	199
<b>Doctoral</b>	569	572	566	591	631	633	673
<b>Professional</b>	26	26	24	28	27	27	29
<b>Total</b>	820	814	796	804	851	863	903

**Percentage of Full-Time Faculty with Tenure (AAUP Definition)  
Fall 2003 - Fall 2009**



	Fall 2003	Fall 2004	Fall 2005	Fall 2006	Fall 2007	Fall 2008	Fall 2009
<b>Professors</b>	94.1%	94.1%	94.3%	95.7%	96.5%	97.4%	98.3%
<b>Associate Professors</b>	74.7%	72.2%	67.1%	82.4%	76.8%	89.1%	87.2%
<b>Assistant Professors</b>	3.6%	4.1%	3.8%	8.7%	7.2%	3.6%	2.2%
<b>Instructors</b>		100.0%	100.0%	100.0%	100.0%	100.0%	100.0%
<b>All Faculty</b>	44.5%	44.2%	43.0%	49.0%	46.4%	49.8%	49.0%

**Average Salaries of Full-Time Instructional Faculty  
on Academic Year Contracts (AAUP Definition)  
Fall 2003 - Fall 2009**

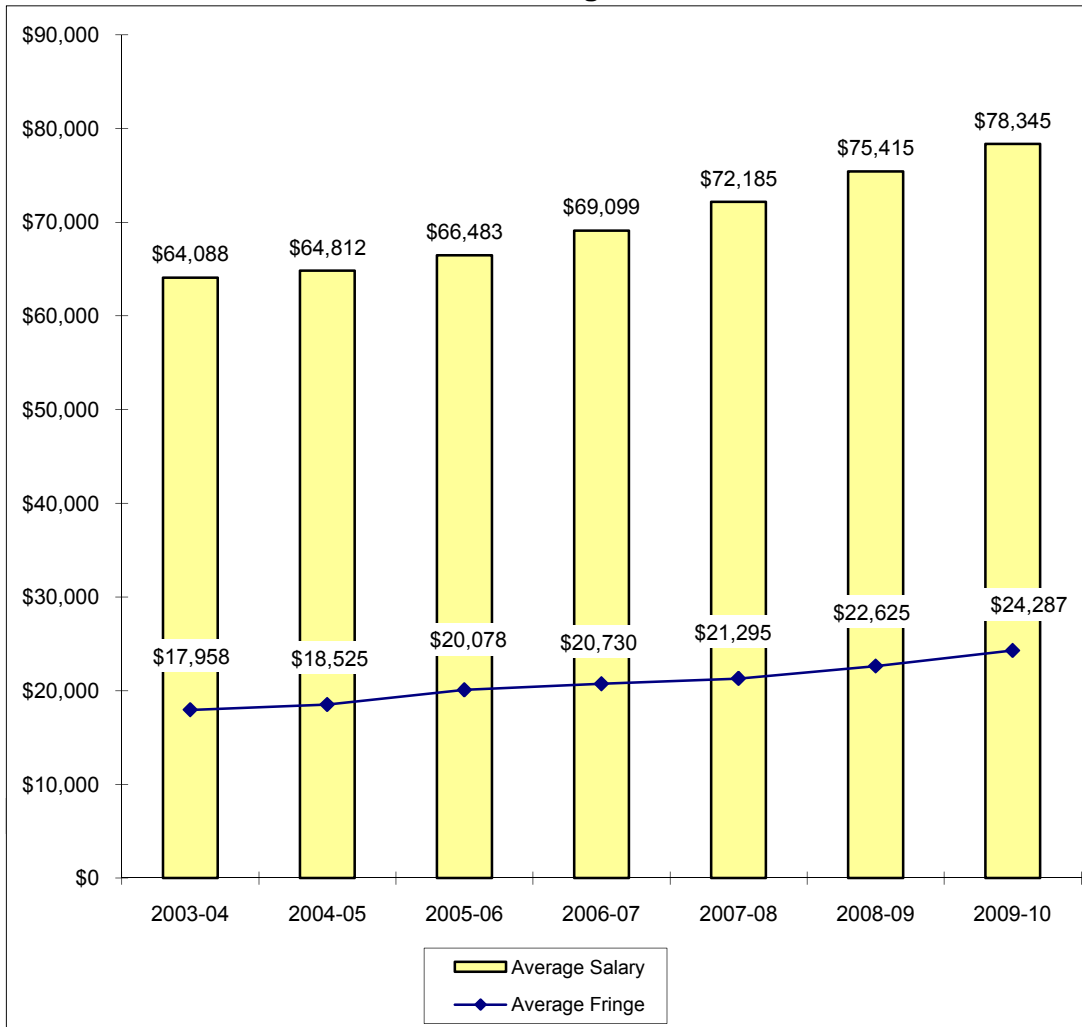
Rank	Fall 2003		Fall 2004		Fall 2005		Fall 2006	
	Number in Rank	Average Salary	Number in Rank	Average Salary	Number in Rank	Average Salary	Number in Rank	Average Salary
Professor	239	\$86,590	237	\$87,091	229	\$89,219	233	\$92,385
Associate Professor	154	\$67,706	151	\$67,501	152	\$68,432	170	\$70,179
Assistant Professor	169	\$57,177	170	\$58,675	158	\$52,385	138	\$67,143
Instructor	0		1	*	1	*	1	*
Senior Lecturer	60	\$47,826	58	\$47,719	54	\$48,728	54	\$50,950
Lecturer	155	\$39,627	153	\$41,055	161	\$42,388	171	\$43,710
All Ranks	777	\$64,088	770	\$64,812	755	\$66,483	767	\$69,099
Average Fringe		\$17,958		\$18,525		\$20,078		\$20,730
Fringe as a Percentage of Average Salary		28.0%		28.6%		30.2%		30.0%
Percentage Increase in Average Salary for Continuing Faculty		3.4%		0.2%		3.4%		5.0%

Rank	Fall 2007		Fall 2008		Fall 2009	
	Number in Rank	Average Salary	Number in Rank	Average Salary	Number in Rank	Average Salary
Professor	231	\$97,241	231	\$102,398	237	\$106,504
Associate Professor	185	\$74,681	201	\$78,043	211	\$81,618
Assistant Professor	153	\$69,536	137	\$70,562	139	\$73,872
Instructor	1	*	1	*	1	*
Senior Lecturer	65	\$52,175	84	\$55,668	109	\$57,263
Lecturer	178	\$46,765	169	\$49,274	162	\$51,032
All Ranks	813	\$72,185	823	\$75,415	859	\$78,345
Average Fringe		\$21,295		\$22,625		\$24,287
Fringe as a Percentage of Average Salary		29.5%		30.0%		31.0%
Percentage Increase in Average Salary for Continuing Faculty		6.0%		5.8%		4.6%

\*Data not displayed for five or fewer faculty.



**Average Compensation of Full-Time Instructional Faculty  
on Academic Year Contracts  
2003-04 through 2009-10**

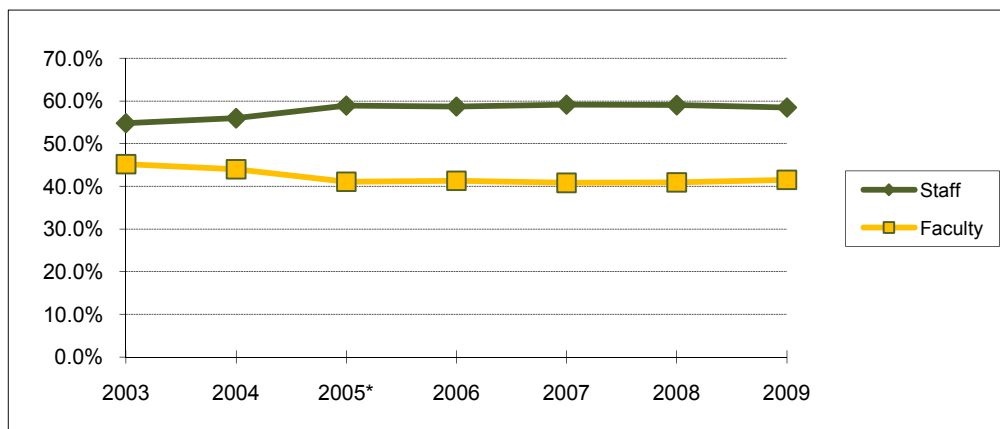


**Institutional Staff  
Fall 2003 - Fall 2009**

Fall	2003	2004	2005*	2006	2007	2008	2009
<b>Faculty:</b>							
Full-Time	851	834	755	767	813	823	861
Part-Time	144	113	155	161	159	171	189
<b>Executive/Administrative:</b>							
Full-Time	181	188	221	251	275	285	313
Part-Time	1	2	1	1	1	2	1
<b>Other Professional:</b>							
Full-Time	453	456	500	476	532	566	580
Part-Time	11	18	18	16	18	22	17
<b>Technical/Paraprofessional:</b>							
Full-Time	40	40	105	139	143	128	132
Part-Time	2	3	17	18	18	17	17
<b>Clerical/Secretarial:</b>							
Full-Time	408	396	335	332	325	323	335
Part-Time	42	39	33	27	33	27	22
<b>Skilled Crafts:</b>							
Full-Time	6	6	7	7	7	7	7
Part-Time	0	0	1	1	0	0	0
<b>Service/Maintenance:</b>							
Full-Time	58	49	58	42	47	49	47
Part-Time	5	7	10	10	10	8	8
<b>Total:</b>							
Full-Time	1997	1969	1981	2014	2142	2181	2275
Part-Time	205	182	235	234	239	247	254
<b>Grand Total</b>	2202	2151	2216	2248	2381	2428	2529

\*2005 shifts in categorization of employees due to internal reclassification and IPEDS reporting changes.

**Percentage of Institutional Staff  
Fall 2003 - Fall 2009**



Fall	2003	2004	2005*	2006	2007	2008	2009
<b>Staff</b>	54.8%	56.0%	58.9%	58.7%	59.2%	59.1%	58.5%
<b>Faculty</b>	45.2%	44.0%	41.1%	41.3%	40.8%	40.9%	41.5%

**Full-Time Faculty by Religious Affiliation  
Fall 2003 - Fall 2009**

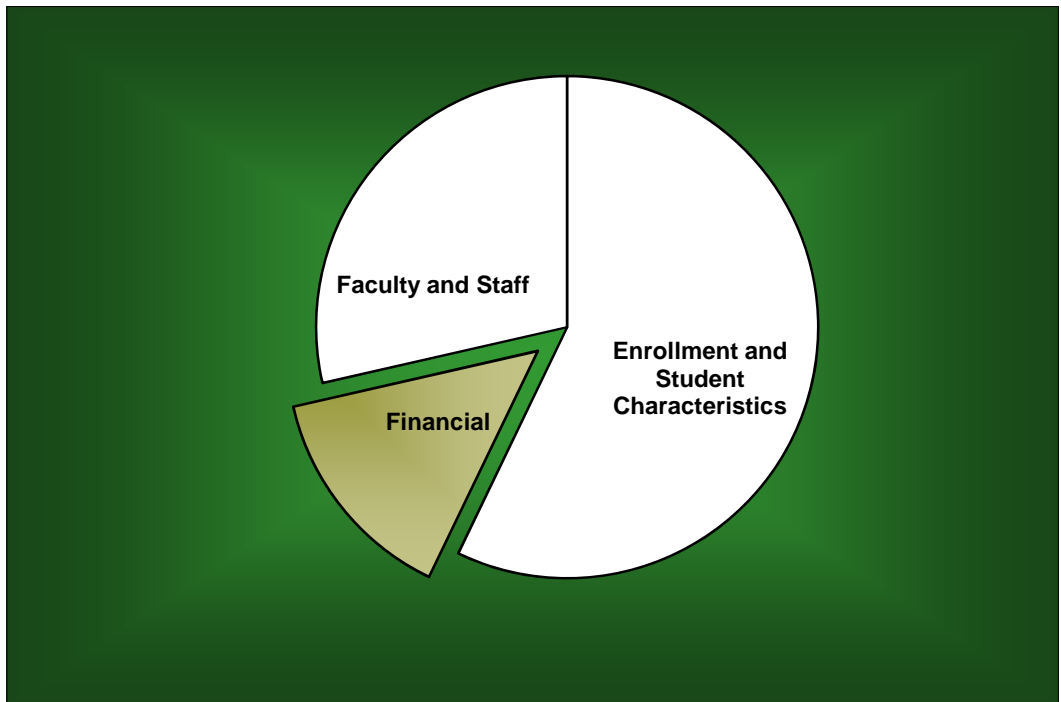
Fall	2003	2004	2005	2006	2007	2008	2009
Assembly of God	1	1	1	1	2	2	4
Baptist	401	390	375	368	379	381	393
Catholic	73	78	79	81	87	91	99
Church of Christ	20	20	18	22	23	24	26
Disciples of Christ	15	14	11	11	12	11	11
Episcopalian	53	52	54	56	60	60	60
Lutheran	46	46	47	46	51	52	55
Methodist	80	79	78	75	78	77	79
Non-/Inter-Denominational	17	21	24	24	28	18	21
Presbyterian	50	51	49	54	59	56	60
Other / Unspecified	64	62	60	66	72	91	95
<b>Total</b>	<b>820</b>	<b>814</b>	<b>796</b>	<b>804</b>	<b>851</b>	<b>863</b>	<b>903</b>

**Full-Time Staff by Religious Affiliation  
Fall 2003 - Fall 2009**

Fall	2003	2004	2005	2006	2007	2008	2009
Assembly of God	11	10	9	8	9	8	7
Baptist	614	592	618	612	646	645	683
Catholic	112	117	108	117	128	138	146
Church of Christ	34	33	35	36	36	36	42
Disciples of Christ	21	19	18	16	13	12	12
Episcopalian	26	30	26	21	25	30	33
Lutheran	35	35	35	40	40	46	46
Methodist	115	109	110	117	124	128	126
Non/Inter-Denominational	58	64	63	81	98	99	103
Presbyterian	25	22	27	33	36	38	36
Other / Unspecified	100	95	96	98	104	108	105
<b>Total</b>	<b>1151</b>	<b>1126</b>	<b>1145</b>	<b>1179</b>	<b>1259</b>	<b>1288</b>	<b>1339</b>

# ***Financial***

---



**Undergraduate Tuition and Other Semester Charges  
2003-04 through 2009-10**

	2003-04	2004-05	2005-06	2006-07	2007-08	2008-09	2009-10
UG Grandfathered Tuition per Hour (8)	\$432.00	\$461.00	\$490.00				
Increase from Prior Year	6.7%	6.7%	6.3%				
UG Tuition per Semester Hour (9)	\$698.00	\$746.00	\$794.00	\$857.00	\$925.00	\$986.00	\$1,055.00
Increase from Prior Year	6.7%	6.9%	6.4%	7.9%	7.9%	6.6%	7.0%
UG Flat Tuition Rate (7)	\$16,750	\$17,900	\$19,050	\$20,574	\$22,220	\$23,664	\$ 25,320
Increase from Prior Year	6.7%	6.9%	6.4%	8.0%	8.0%	6.5%	7.0%
Application Fee (UG)	35.00	35.00	50.00	50.00	50.00	50.00	50.00
Applied Music Fee(1)	133.00	142.00	151.00	163.00	175.00	186.00	199.00
Change-of-Course Fee	20.00	20.00	20.00	20.00	20.00	20.00	20.00
Chapel-Forum Fee	30.00	50.00	55.00	55.00	55.00	55.00	60.00
Credit by Baylor Exam Fee	216.00	230.00	245.00	265.00	286.00	305.00	326.00
General Student Fee	690.00	745.00	800.00	1,070.00	1,135.00	1,210.00	1,295.00
Enrollment Deposit (2)	100.00	100.00	100.00	100.00	100.00	100.00	300.00
Lab/Course Fees (3)	35.00	50.00	50.00	50.00	50.00	50.00	50.00
Late Registration Fee (4)	20.00	30.00	50.00	50.00	50.00	75.00	50.00
Technology Fee (10)	150.00	195.00	210.00				
Vehicle Registration Fee (5)	175.00	175.00	175.00	175.00	175.00	200.00	225.00
Room (Freshmen in Penland/Collins)	1,464.00	1,560.00	1,673.00	1,797.00	1,887.00	2,000.00	2,120.00
Increase from Prior Year	7.3%	6.6%	7.2%	7.4%	5.0%	6.0%	6.0%
Board (6)	1,476.53	1,524.16	1,569.63	1,669.63	1,732.41	1,781.38	1,865.56
Increase from Prior Year	-1.1%	3.2%	3.0%	6.4%	3.8%	2.8%	4.7%

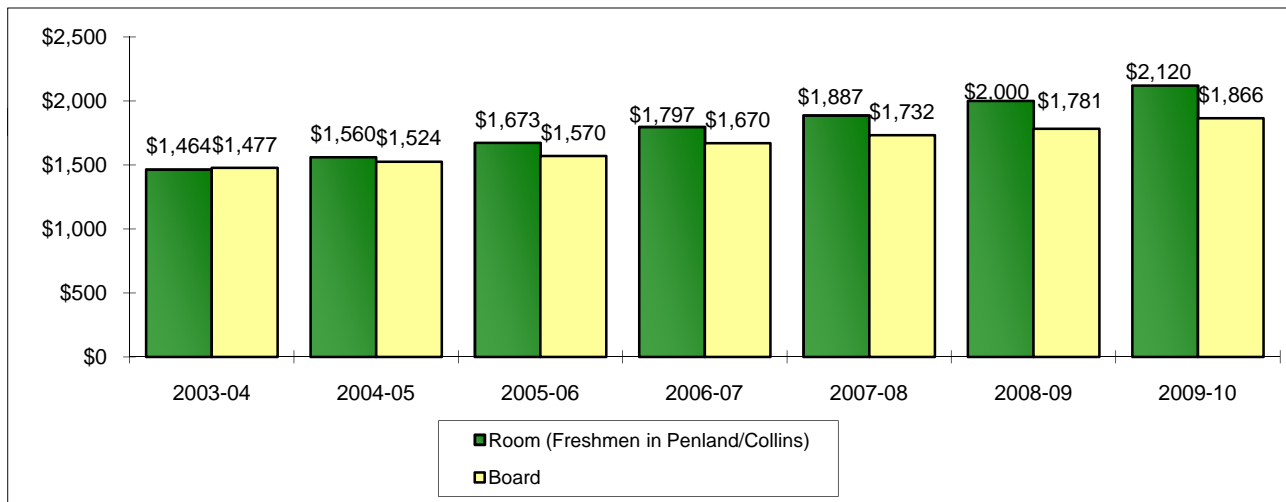
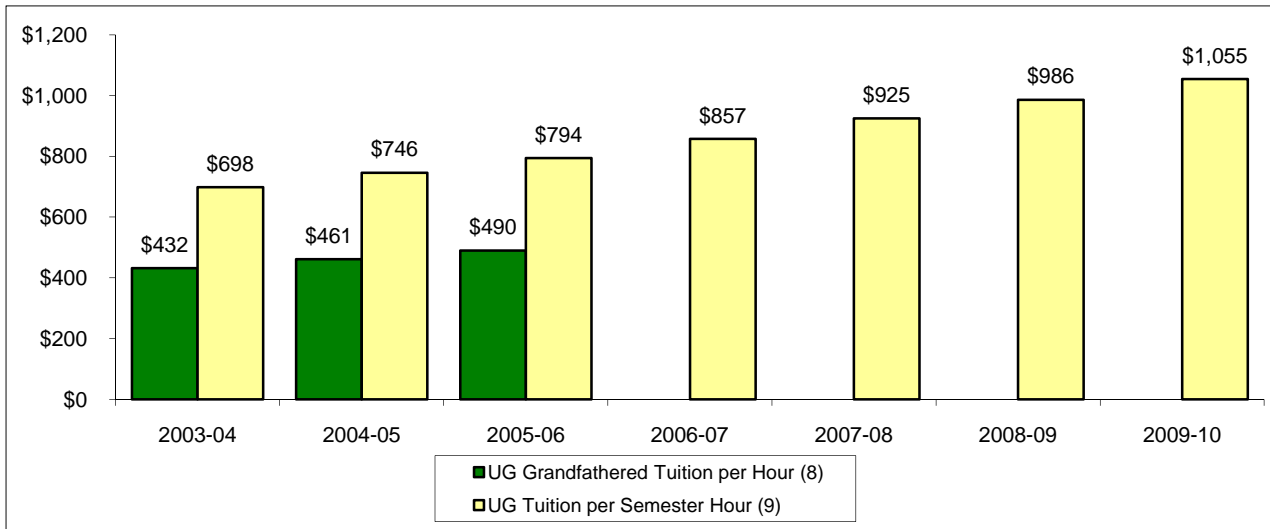
Increase in Semester Charges from 2003-04 to 2009-10:

Tuition, per semester hour	51.1%
Room	44.8%
Board	26.3%

## Notes:

- (1) Supplemental charge per semester for one 30-minute lesson per week.
- (2) The Enrollment Deposit is paid to assure enrollment place and is applied on the student's first semester bill. Beginning in 2009-10, the fee also serves as the application for on-campus housing.
- (3) Minimum lab fee is noted; some courses may be higher.
- (4) Minimum charges are noted; charges vary.
- (5) Annual automobile fee (September - August).
- (6) The 2003-04 through 2005-06 Board rate reflects the "Classic -16 Meal Plan" but meal plan does not include BearBucks. The 2006-07 Board rate reflects the "Classic - 16 Meal Plan" + \$100 Dining Dollars. The 2007-08, 2008-09, and 2009-10 Board rates reflect "The Works - 16 Meal Plan" + \$100 Dining Dollars.
- (7) Beginning in 2002-03, a flat tuition rate was instituted for new undergraduate students taking 12 or more hours per semester (Fall and Spring).
- (8) Beginning in 2002-03, the tuition per semester hour rate is applicable for students who were enrolled at Baylor prior to June 1, 2002 (grandfathered rate). The grandfathered tuition rate was discontinued after the 2005-06 fiscal year.
- (9) Tuition per semester hour for new students taking less than 12 hours.
- (10) Technology fee is now combined with General Student Fee.

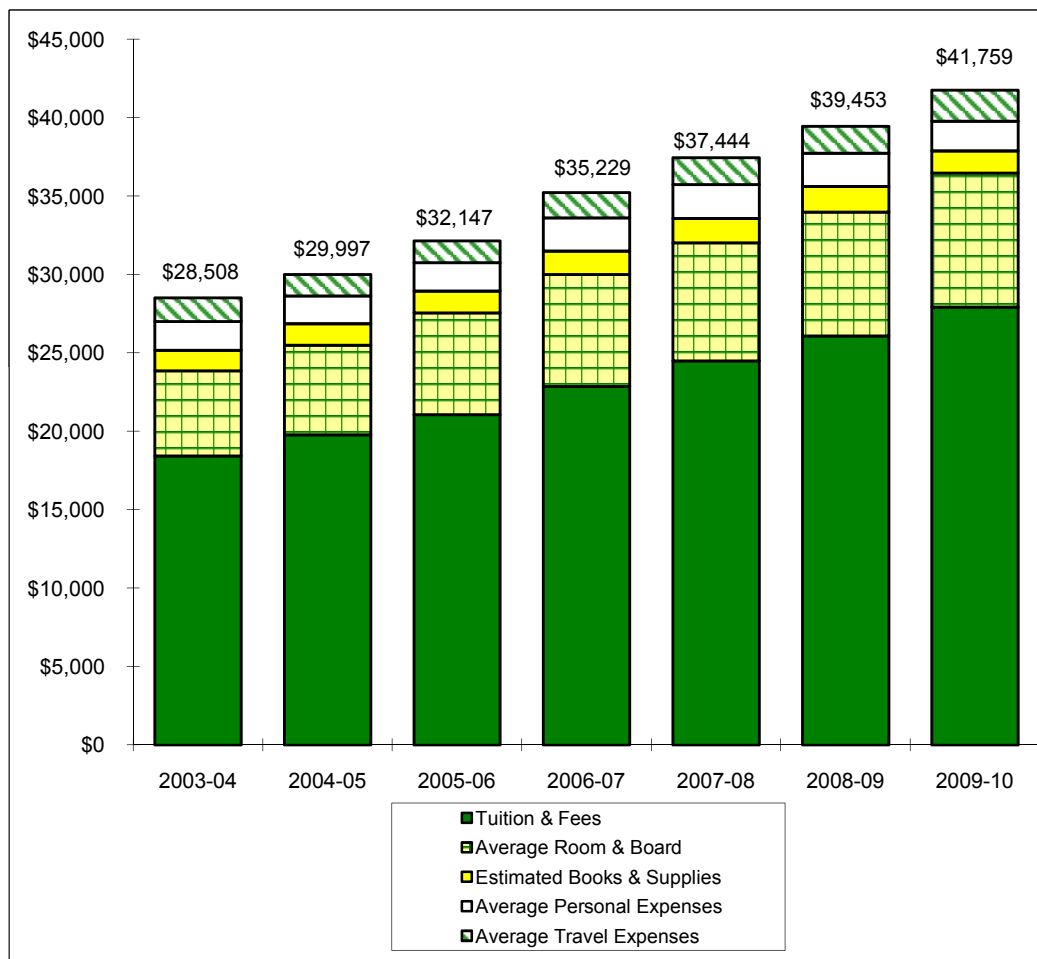
### Tuition, Room and Board Charges 2003-04 through 2009-10



See notes on page 47.

### Annual Undergraduate Student Cost Profile 2003-04 through 2009-10

	2003-04	2004-05	2005-06	2006-07	2007-08	2008-09	2009-10
Tuition & Fees	\$18,430	\$19,780	\$21,070	\$22,869	\$24,490	\$26,084	\$27,910
Average Room & Board	5,434	5,713	6,485	7,125	7,526	7,895	8,569
Estimated Books & Supplies	1,298	1,356	1,382	1,502	1,548	1,634	1,398
Average Personal Expenses	1,832	1,778	1,813	2,108	2,172	2,120	1,890
Average Travel Expenses	1,514	1,370	1,397	1,625	1,708	1,720	1,992
<b>Average Total Cost</b>	<b>\$28,508</b>	<b>\$29,997</b>	<b>\$32,147</b>	<b>\$35,229</b>	<b>\$37,444</b>	<b>\$39,453</b>	<b>\$41,759</b>
Increase from Prior Year	4.4%	5.2%	7.2%	9.6%	6.3%	5.4%	5.8%



Note: In 2002-03 a flat tuition rate was instituted for new students taking 12 or more hours per semester (Fall and Spring).

**Operating Funds  
2002-03 through 2008-09**

**Sources of Revenues**

	2002-03	2003-04	2004-05	2005-06	2006-07	2007-08	2008-09
Tuition & Fees	\$205,208,253	\$228,672,157	\$253,947,979	\$286,798,199	\$313,899,972	\$342,097,694	\$373,028,202
Gifts/Private Grants	4,915,658	3,957,986	4,106,405	4,667,051	4,954,597	6,439,884	5,492,860
BGCT Appropriation	3,846,290	3,832,014	3,721,275	3,517,856	3,504,658	3,439,127	3,336,082
Endowment Income	17,771,203	21,035,555	22,429,350	22,661,361	23,424,913	23,663,760	24,802,676
Investment Income	919,715	635,674	1,333,628	3,913,218	6,053,815	4,993,909	3,213,098
Other Sources	12,434,554	13,900,817	15,406,112	14,707,559	17,042,155	17,791,539	17,706,402
Auxiliary Enterprises	39,019,089	37,156,315	40,774,330	45,675,394	46,691,476	51,684,175	59,229,289
<b>Total Revenues</b>	<b>\$284,114,762</b>	<b>\$309,190,518</b>	<b>\$341,719,079</b>	<b>\$381,940,638</b>	<b>\$415,571,586</b>	<b>\$450,110,088</b>	<b>\$486,808,609</b>

**Sources of Revenues as a Percentage of Total Revenues**

	2002-03	2003-04	2004-05	2005-06	2006-07	2007-08	2008-09
Tuition & Fees	72.2%	74.0%	74.2%	75.0%	75.6%	76.1%	76.7%
Gifts/Private Grants	1.7%	1.3%	1.2%	1.2%	1.2%	1.4%	1.1%
BGCT Appropriation	1.4%	1.2%	1.1%	0.9%	0.8%	0.8%	0.7%
Endowment Income	6.4%	6.8%	6.6%	5.9%	5.6%	5.3%	5.1%
Investment Income	0.3%	0.2%	0.4%	1.0%	1.5%	1.1%	0.7%
Other Sources	4.4%	4.5%	4.5%	3.9%	4.1%	4.0%	3.6%
Auxiliary Enterprises	13.7%	12.0%	11.9%	11.9%	11.1%	11.5%	12.2%
<b>Total Revenues</b>	<b>100.0%</b>	<b>100.0%</b>	<b>100.0%</b>	<b>100.0%</b>	<b>100.0%</b>	<b>100.0%</b>	<b>100.0%</b>

Note: The 2007-08 amount for Other Sources was corrected in Fall 2009.



**Operating Funds (Continued)**  
**2002-03 through 2008-09**

**Expenditures by Function & Transfers**

	<b>2002-03</b>	<b>2003-04</b>	<b>2004-05</b>	<b>2005-06</b>	<b>2006-07</b>	<b>2007-08</b>	<b>2008-09</b>
Instruction	\$102,617,463	\$109,586,442	\$113,783,712	\$114,841,749	\$128,567,485	\$136,841,541	\$147,664,892
Acad Support/Research/PS	24,666,809	24,957,815	25,637,473	26,511,262	28,969,003	31,042,840	34,406,883
Student Services	14,779,593	15,177,946	19,276,167	19,926,881	20,460,020	22,113,403	25,155,946
Plant Operation/Maintenance	22,537,742	33,373,695	36,228,820	39,746,168	50,405,094	44,584,892	41,588,549
Institutional Support	37,986,315	37,244,481	37,977,656	42,191,169	41,187,651	43,132,354	49,131,930
Scholarships & Fellowships	37,529,834	47,065,860	58,837,752	72,429,465	78,291,693	92,184,669	105,128,732
Auxiliary Enterprises	46,541,207	43,784,647	45,499,135	51,076,247	53,951,060	64,132,500	67,659,956
Discretionary Transfers	(2,560,253)	(2,018,647)	4,469,901	15,206,432	13,692,811	16,040,213	16,042,645
<b>Total Exp. &amp; Transfers</b>	284,098,710	309,172,239	341,710,616	381,929,373	415,524,817	450,072,412	486,779,533
<b>Excess Revenues</b>	\$16,052	\$18,279	\$8,463	\$11,265	\$46,769	\$37,676	\$29,076

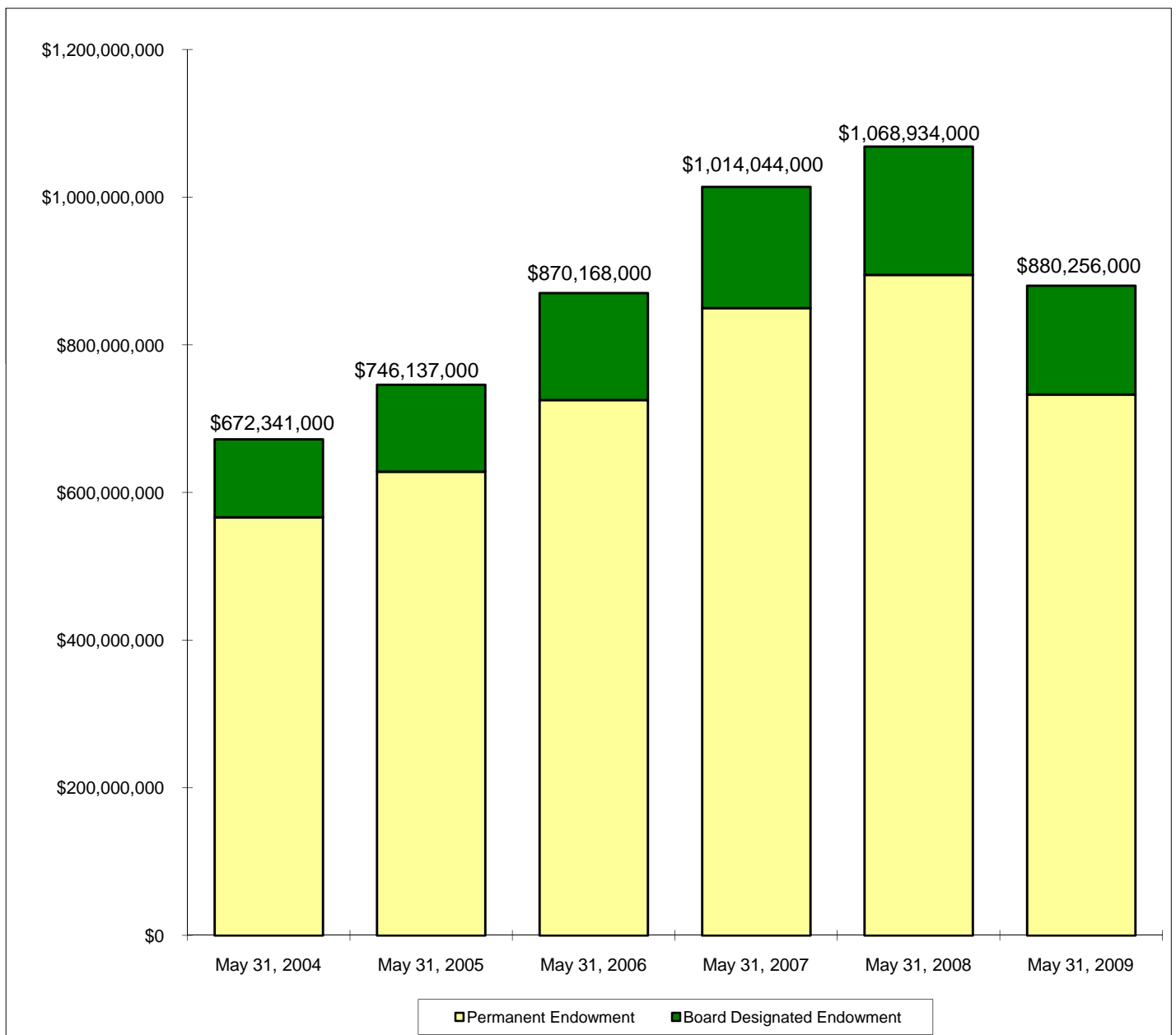
**Percentage of Total Expenditures & Transfers**

	<b>2002-03</b>	<b>2003-04</b>	<b>2004-05</b>	<b>2005-06</b>	<b>2006-07</b>	<b>2007-08</b>	<b>2008-09</b>
Instruction	36.1%	35.4%	33.3%	30.1%	30.9%	30.4%	30.3%
Gifts/Private Grants	8.7%	8.1%	7.5%	6.9%	7.0%	6.9%	7.1%
Student Services	5.2%	4.9%	5.6%	5.2%	4.9%	4.9%	5.2%
Plant Operation/Maintenance	7.9%	10.8%	10.6%	10.4%	12.1%	9.9%	8.5%
Institutional Support	13.4%	12.0%	11.1%	11.0%	9.9%	9.6%	10.1%
Scholarships & Fellowships	13.2%	15.2%	17.2%	19.0%	18.8%	20.5%	21.6%
Auxiliary Enterprises	16.4%	14.2%	13.3%	13.4%	13.0%	14.2%	13.9%
Discretionary Transfers	-0.9%	-0.7%	1.3%	4.0%	3.3%	3.6%	3.3%
<b>Total Exp. &amp; Transfers</b>	100.0%	100.0%	100.0%	100.0%	100.0%	100.0%	100.0%

Note: The 2007-08 amounts were corrected in Fall 2009.

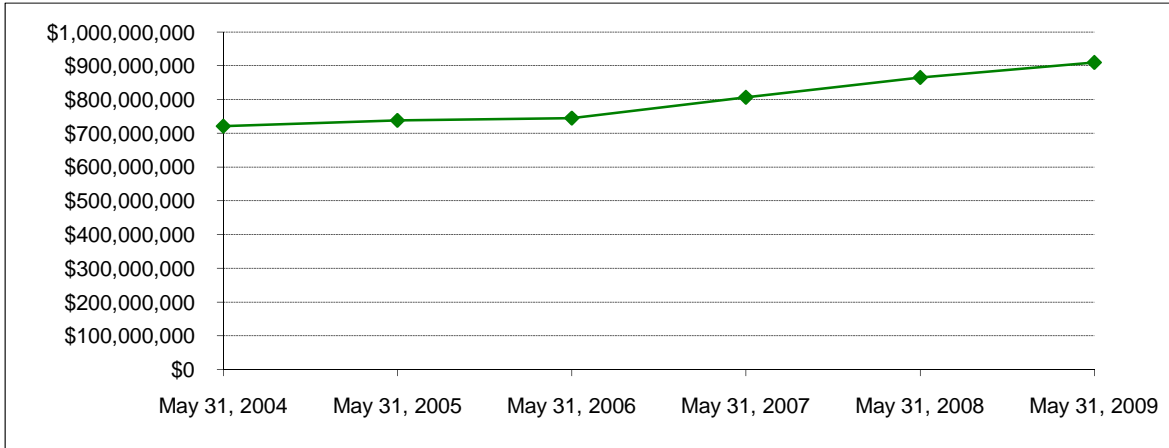
**Endowment Fund Balance - Market Value  
May 31, 2004 through May 31, 2009**

	May 31, 2004	May 31, 2005	May 31, 2006	May 31, 2007	May 31, 2008	May 31, 2009
Permanent Endowment	\$566,655,000	\$628,503,000	\$725,266,000	\$849,855,000	\$894,844,000	\$733,005,000
Board Designated Endowment	105,686,000	117,634,000	144,902,000	164,189,000	174,090,000	147,251,000
<b>Total Endowment</b>	<b>\$672,341,000</b>	<b>\$746,137,000</b>	<b>\$870,168,000</b>	<b>\$1,014,044,000</b>	<b>\$1,068,934,000</b>	<b>\$880,256,000</b>
Permanent Endowment	84.3%	84.2%	83.3%	83.8%	83.7%	83.3%
Board Designated Endowment	15.7%	15.8%	16.7%	16.2%	16.3%	16.7%
<b>Total Endowment</b>	<b>100.0%</b>	<b>100.0%</b>	<b>100.0%</b>	<b>100.0%</b>	<b>100.0%</b>	<b>100.0%</b>



**Property, Plant and Equipment\*  
May 31, 2004 through May 31, 2009**

Property, Plant & Equipment	May 31, 2004	May 31, 2005	May 31, 2006	May 31, 2007	May 31, 2008	May 31, 2009
	\$720,816,000	\$738,186,000	\$745,063,000	\$806,781,000	\$865,139,000	\$909,995,000



\*Does not reflect the impact of accumulated depreciation.

\*The May 31, 2006 figure for Property, Plant & Equipment was changed in 2007 from \$744,986,000 to \$745,063,000.

**Assets  
May 31, 2004 through May 31, 2009**

	May 31, 2004	May 31, 2005	May 31, 2006	May 31, 2007	May 31, 2008	May 31, 2009
Net Assets	\$989,916,000	\$1,059,904,000	\$1,230,176,000	\$1,408,848,000	\$1,439,335,000	\$1,241,695,000
Total Assets	\$1,363,089,000	\$1,426,295,000	\$1,638,403,000	\$1,831,511,000	\$1,863,687,000	\$1,715,749,000

