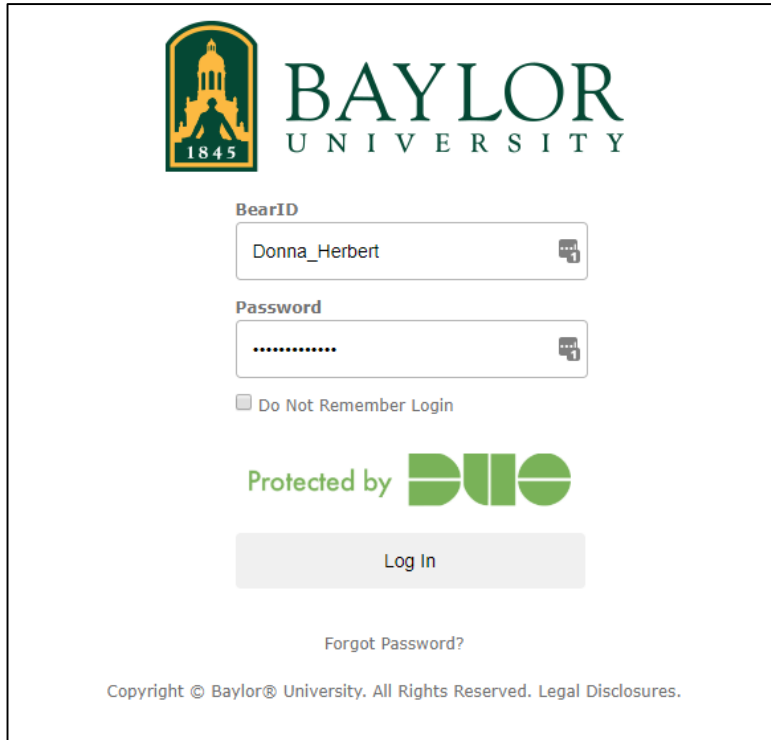


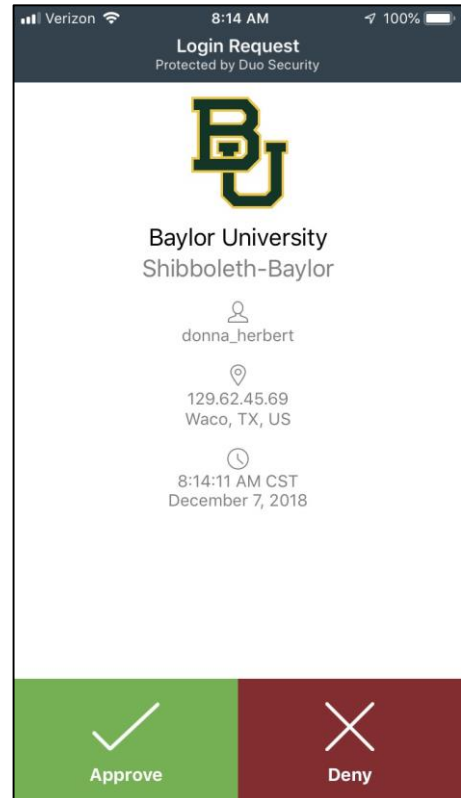
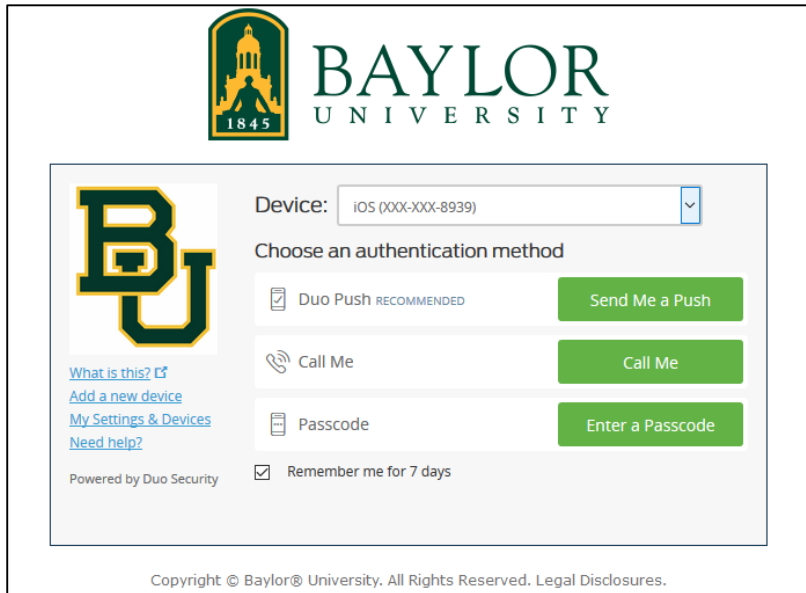
# GlobalProtect VPN Installation Instructions for Windows

To install the GlobalProtect client on your computer, go to: <https://vpn.baylor.edu>

You will see the Baylor Shibboleth log-in page:



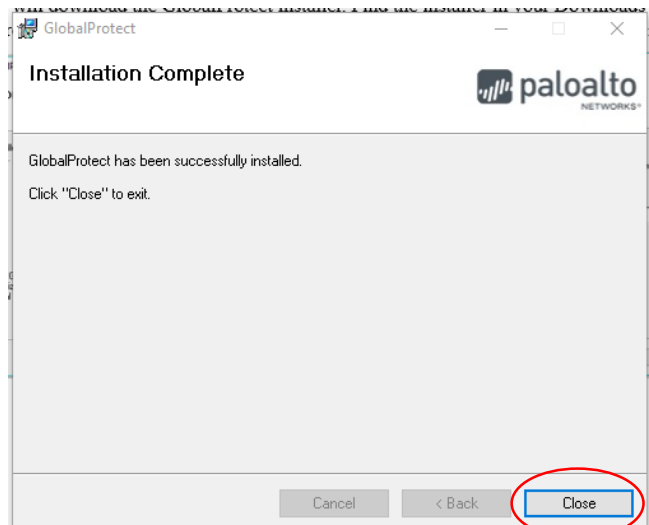
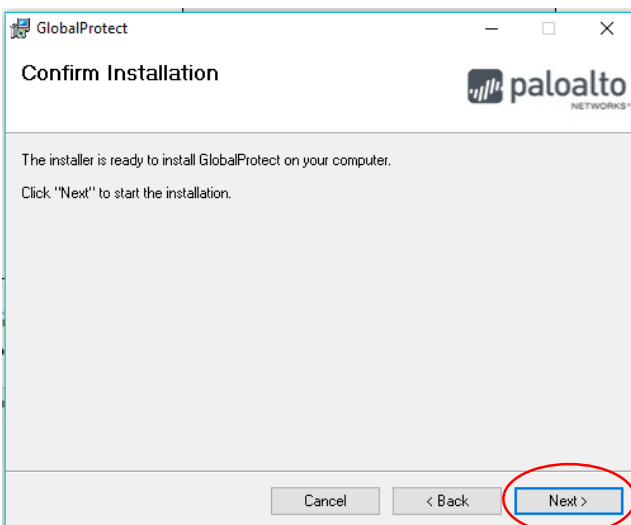
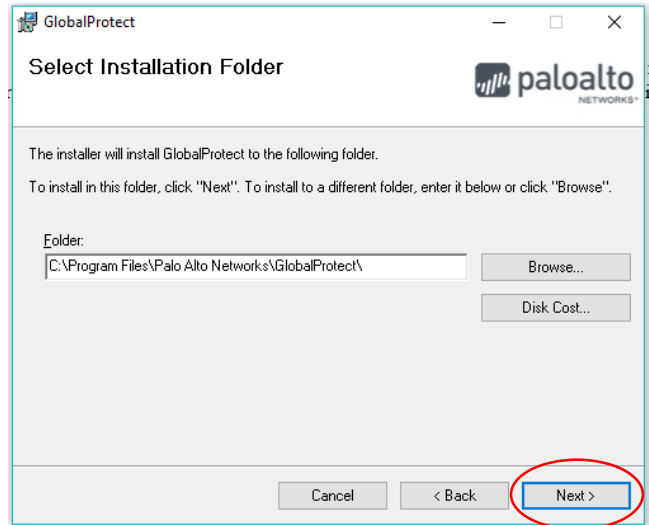
Enter your BearID and password and click the “Log in” button. The DUO verification screen will appear. Select your verification option and then Approve.



This page will appear next. Select your Windows operating system. If you are unsure which to choose, contact the Help Desk for assistance.



This will download the GlobalProtect installer. Find the installer in your Downloads folder (or wherever you have designated downloaded files to go), and double-click to start the installation.



Once the installation has completed, you will see the GlobalProtect icon in your System Tray.



If you have questions about the installation of GlobalProtect, please contact the Help Desk at 254-710-4357.