

NSSLHA AT BAYLOR

2021 Fall Conference



Return to Learn and Beyond:
The SLP's Guide to Student TBI and Concussion Management

September 24, 2021 8:30 am - 3:30 pm CST



Presented by the National Student Speech Language Hearing Association (NSSLHA) at Baylor and the Baylor University Department of Communication Sciences and Disorders in the Robbins College of Health and Human Sciences.



ASHA CE
APPROVED PROVIDER

Texas Speech-Language-Hearing Association

Intermediate Level

.6 ASHA CEUs

AGENDA:

Morning Session 1: 8:30 am - 9:45 am

College, Concussion, and Brain Injury: Understanding the Needs for Successful Return to Learn

Break: 9:45 am - 10:00 am

Morning Session 2: 10:00 am - 11:45 am

College, Concussion, and Brain Injury: Designing Intervention Approaches For Successful Return to Learn

Lunch: 11:45 am - 12:15 pm

Afternoon Session 1: 12:15 pm - 1:45 pm

Gaps in Care for Elementary Students with Concussion and Brain Injury

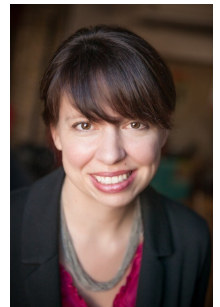
Break: 1:45 pm - 2:00 pm

Afternoon Session 2: 2:00 pm - 3:30 pm

Management of Pediatric Concussion and the Speech-Language Pathologist: Challenges and Opportunities

ABOUT THE SPEAKER:

Katy O'Brien, Ph.D., CCC-SLP, is an Assistant Professor at the University of Georgia in the department of Communication Sciences and Special Education. She has clinical experience with learners with TBI across the spectrum of recovery, from intensive care through outpatient rehabilitation and community re-entry on college campuses. She is the Vice Chair of the Brain Injury Association of Georgia and is on the board of the Academy of Neurologic Communication Disorders and Sciences. Dr. O'Brien serves on the Brain Injury Association of America committee, currently developing a concussion specialty certification program, and is part of a working group developing guidelines for speech-language pathologists for the management of cognitive and communication needs following concussion. Her research addresses cognitive rehabilitation, including return to learn following traumatic brain injury and concussion in secondary and post secondary settings, as well as knowledge translation for clinical management of concussion.



Virtual Conference Instructions:

In order to provide the safest possible environment for our attendees given the circumstances surrounding COVID-19, our conference will be provided virtually.

A zoom link will be emailed to registered participants pending receipt of payment.

Speaker Disclosure Information

Financial- Andee's Army
Nonfinancial - Brain Injury Association of Georgia (Vice Chair), Academy of Neurologic Communication Disorders and Sciences (Board), Brain Injury Association of America (Committee Member)



Complete registration
here:



CONTACT:

Dr. Carrie Drew, CCC-A
Clinical Faculty/Audiologist
Carrie_Drew@baylor.edu
Baylor University
Communication Sciences & Disorders
Phone: (254) 710-2568
Fax: (254) 710-2590

REGISTRATION:

Please register using our QR code.

Payment Options:

Venmo (@NSSLHA-Baylor)

Mail check made payable to
"NSSLHA at Baylor"

NSSLHA at Baylor
One Bear Place #97332
Waco, TX 767798

\$75.00 Professional

Free - Baylor students and Parents
of children with communication
disorders

Learning Objectives:

Participants will be able to:

- 1) Compare and contrast common needs of students with concussion and those with moderate to severe traumatic brain injury.
- 2) Describe the role of peer support for college students recovering from concussion.
- 3) Explain two direct intervention approaches appropriate for the needs of students with persistent problems following concussion or brain injury.
- 4) Identify two on campus resources for college students with concussion or brain injury.
- 5) Summarize challenges in management of concussion in elementary and middle school students.
- 6) Describe areas of education, assessment, and treatment where speech-language pathologists can be involved with other interdisciplinary team members in the management of pediatric concussion.
- 7) Identify the four critical areas of return to learn for students with concussion, namely: return to learn teams, outcome measurement, ongoing monitoring and management, and tailored accommodations.
- 8) Explain how to determine accommodations appropriate for meeting the varied needs of students with concussion.