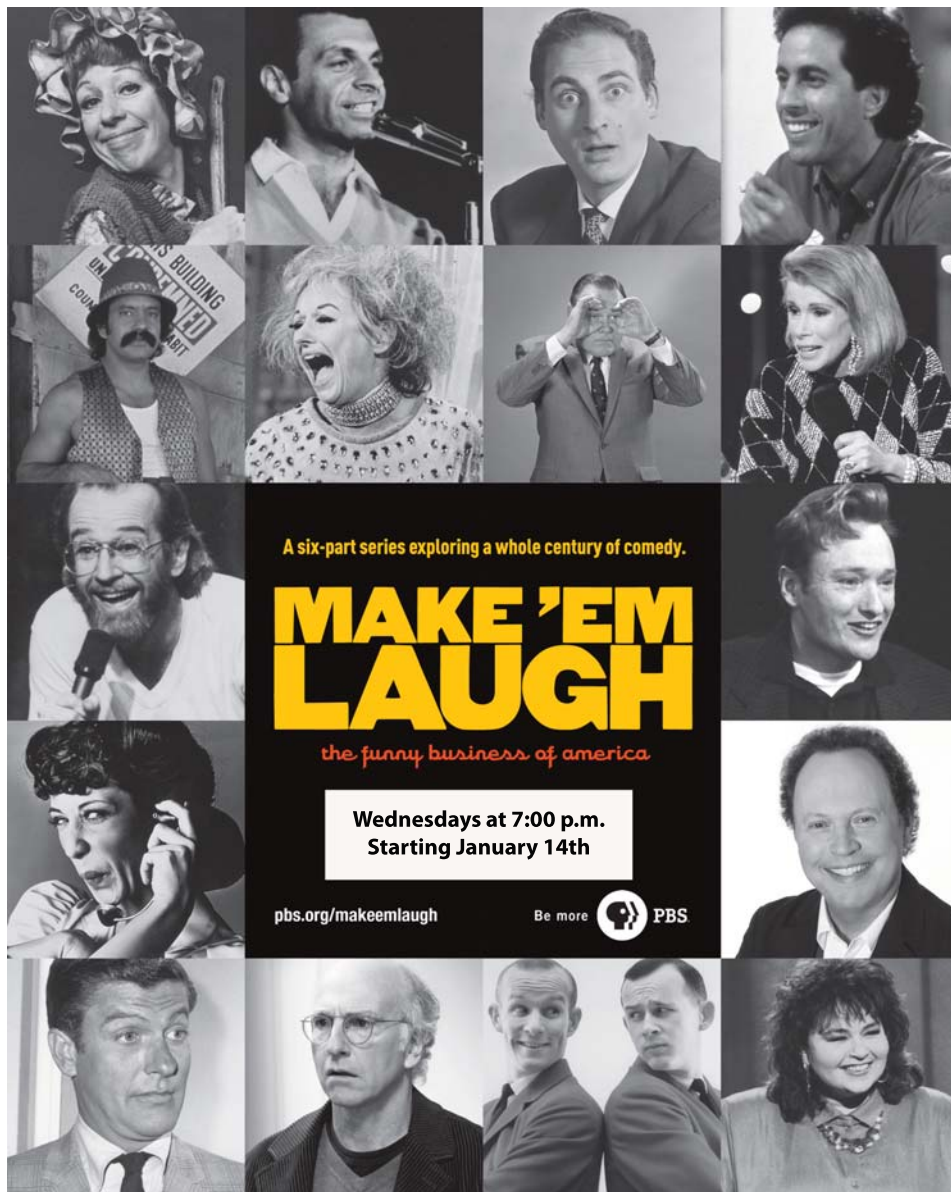


kwbu

program guide

www.kwbu.org

January 2009




A six-part series exploring a whole century of comedy.

MAKE 'EM LAUGH

the funny business of america

Wednesdays at 7:00 p.m.
Starting January 14th

pbs.org/makeemlaugh Be more  PBS



Understand
your world

KWBU'S MISSION

KWBU shall serve as an essential lifelong resource providing quality public television and radio programs and services for the enrichment of the lives of Central Texans.

WHAT'S INSIDE

KWBU-TV Highlights	2
KWBU-TV Prime Time Schedule	5
KWBU-TV Daytime Schedule	9
KWBU-TV Overnight Schedule	10
KWBU-DT Schedule	11
KWBU Create Schedule	12
KWBU Underwriters	13
KWBU-FM Highlights	14
KWBU-FM Program Schedule	16
KWBU-FM HD Radio Schedule	17
KWBU Cornerstone Society	18

WHERE TO WATCH KWBU-TV

Gatesville	Cox Cable 4
Kosse	Charter Comm. 95
Little River Academy	Centrovision 8
Lorena	Time Warner 4
Marlin	Northland Cable 13
Meridian	Charter Comm. 95
Moody	Centrovision 8
Morgan's Point	Centrovision 8
Riesel	Cabletex Systems, Inc 9
Rogers	Centrovision 8
Rosebud	DMS Cable 39
Salado	Centrovision 8
Temple	Centrovision 8
Temple/Killeen	Time Warner 18
Troy	Centrovision 8
Valley Mills	Rapid Cable 95
Waco	Grande Comm. 4
Waco	Time Warner 4

KWBU is also available on UHF 34, Dish Network 34, and DirecTV 34.



For a complete listing of KWBU's digital channels and numbers, please see page 3.

QUESTIONS OR COMMENTS?

(254) 710-3472

KWBU-TV or KWBU-FM
One Bear Place #97296
Waco, Texas 76798-7296
comments@kwbu.org
www.kwbu.org

Member Services Hotline • (254) 710-7882 or 1-800-898-3710
KWBU-TV Programming Information • (254) 710-7884
KWBU-TV Membership Information • (254) 710-7887
PBS Video • 1-800-PLAYPBS

KWBU STAFF

Clare Paul, Interim General Manager
Brodie Bashaw, KWBU-FM Station Manager
Carla Hervey, Business Affairs Manager
Glenda Moss, Business Manager
Joani Livingston, Production Supervisor
Jessica Denk, Senior Producer
Zack Morris, Chief Photographer
Robert Shiekh, Senior Producer – Inside Baylor Sports
Lawrence Gilligan, Producer - Inside Baylor Sports
Tony Poole, Chief Engineer
Lee Govatos, KWBU-TV Operations Manager
Roxie Collier, Coordinator of Education and Outreach
Derek Smith, KWBU-FM News & Public Affairs Director
Ashley Kortis, Director of Corporate Support
Jaclyn Willbanks, Engineering Assistant
Hal Pledger, Receptionist
Loretta Howard, Membership Manager
Jacqueline Deavenport, Interactive Media/News/ Communications Coordinator

ADVISORY COUNCIL MEMBERS:

Phil Adkins	David Hyers
Ann Claire Anderson	Kathy Krakowian
David Brennan	Kurt Krakowian
Sam Brown	Ben Lacy
Carol Dugat	Chad Latino
Felicia Goodman	Susan Taylor
Taylor Hobbs	John Ucci

BRAZOS VALLEY PUBLIC BROADCASTING FOUNDATION BOARD OF DIRECTORS:

Dr. Charles S. Madden, Chairman
Dr. Corey Carbonara, Vice-Chairman
Patricia A. Wilson, Secretary

Phil Adkins	Mike Hernandez
John Barry	Cynthia Jackson
Dr. David Garland	Dr. Michael F. Korpi
Sue Getterman	Kris Kaiser Olson
Nell Hawkins	Bernard Rapoport

BRAZOS VALLEY PUBLIC BROADCASTING FOUNDATION OFFICERS:

Billie A. Gilbert, Corporate Secretary

The KWBU Program Guide is a monthly publication. KWBU is a service of our members, the Brazos Valley Public Broadcasting Foundation and Baylor University.



KWBU-TV Highlights



Billy Crystal (pictured) hosts this six-part series, which chronicles more than 100 years of funny moments in American entertainment. .

CREDIT: JOSEPH SINNOTT, THIRTEEN/WNET NEW YORK

Make 'Em Laugh: The Funny Business of America

Wednesdays, January 14 - 28 at 7:00 p.m. & 9:00 p.m.

– PBS Shows Off Its Sense of Humor; Epic Six-Part Series, Hosted by Billy Crystal, Chronicles More Than 100 Years of American Comedy –

Did you hear the one about PBS airing a comedy series? It's no joke, but it is funny. On three consecutive nights, PBS presents **MAKE 'EM LAUGH: THE FUNNY BUSINESS OF AMERICA**, a six-hour comedy epic showcasing the most hilarious men, women and moments in American entertainment and why they made us laugh. Hosted by funnyman Billy Crystal and narrated by Amy Sedaris, the documentary explores the currents of American comedy throughout a century of social and political change, illuminating how comedy has tackled and poked fun at our political system, race relations, gender issues and the prevailing American standards and taboos in everyday life.

MAKE 'EM LAUGH: THE FUNNY BUSINESS OF AMERICA airs Wednesdays, January 14-28, 2009, 7:00-9:00 p.m. on KWBU-TV, with repeat broadcasts immediately following.

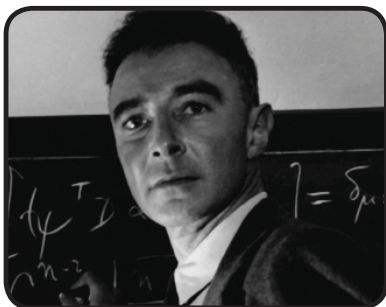
Melding performance, biography and history, **MAKE 'EM LAUGH** features interviews with more than 90 comedians, writers, producers and historians, including Judd Apatow, Roseanne Barr,

Anne Beatts, the Smothers Brothers, Carol Burnett, Sid Caesar, George Carlin, Larry David, Will Ferrell, Leonard Maltin, Cheech Marin, Steve Martin, Chris Rock, Mort Sahl, Dick Van Dyke and many, many more.

Each one-hour episode focuses on a distinct genre of American comedy — from the most ingenious physical schtick to fast-talking wiseguys to incisive satire and parody — re-acquainting viewers with some of their favorite classics. Crystal introduces each episode.

- “Would Ya Hit a Guy With Glasses? Nerds, Jerks & Oddballs” (1/14, 7:00 p.m.)
- “Honey, I’m Home! Breadwinners and Homemakers” (1/14, 8:00 p.m.)
- “Slip on a Banana Peel: The Knockabouts” (1/21, 7:00 p.m.)
- “When I’m Bad, I’m Better: The Groundbreakers” (1/21, 8:00 p.m.)
- “Never Give a Sucker an Even Break: The Wiseguys” (1/28, 7:00 p.m.)
- “Sock It to Me? Satire and Parody” (1/28, 8:00 p.m.)

Also this month:



American Experience “The Trials of Robert J. Oppenheimer”

Monday, January 26 at 8:00 p.m.

This program presents a revealing portrait of the influential American scientist, J. Robert Oppenheimer (pictured), who led the development of the atomic bomb.

CREDIT: J. ROBERT OPPENHEIMER MEMORIAL COMMITTEE



Cinema’s Exiles: From Hitler to Hollywood

Thursday, January 1 at 8:30 p.m.

More than 800 German film professionals escaped to Hollywood in the years between 1933 and 1939 when Hitler rose to power. Pictured: Marlene Dietrich in Paris.

CREDIT: THE MUSEUM OF FILM AND TELEVISION, BERLIN



The Electric Company

Fridays at 4:00 p.m. starting January 23rd

Sure to spark a current of learning, the new version of *The Electric Company* is a multi-media literacy campaign charged with reducing the literacy gap between low and middle income families and advancing the idea that ‘reading is cool.’ Pictured: *The Electric Company*’s Keith, Shock, Jessica, Hector and Lisa jump with excitement at the Electric Diner.

CREDIT: ANTHONY CAUSI

There are so Many Ways to Support KWBU TV & FM!



KWBU STAFF: CARLA HERVEY, ASHLEY KORTIS, CLARE PAUL, GLENDA MOSS, AND LORETTA HOWARD

You can choose your own special way to support KWBU - from making an individual contribution to volunteering your time at fun-filled events. Below are a few examples of how you can support KWBU. If you would like to be contacted to discuss how you would like to lend your support, contact Ashley Kortis at 254.913.5123 or ashley@kwbu.org.

KWBU TV & FM is a community licensee and is supported by you and your community. It is your public television and radio station.

Individual Support

KWBU strives for the exceptional, and the extraordinary in a world full of the "ordinary." Your support helps to provide great drama, world-class music, in-depth news, fascinating "how to" programs, and best of all — non-violent educational programs for your children. And you keep us on the air, working hard to be anything but ordinary. Become a member today by contacting Loretta Howard at 254.710.7887 or loretta@kwbu.org.

Corporate Support

KWBU corporate sponsors support our stations by investing in our exceptional programming, sponsoring a station event or by providing in-kind support. Underwriting, one of our award-winning programs, is a great way for your business to reach an attractive audience. KWBU airs more programming minutes each hour than commercial television and radio stations. So, your sponsor message will stand out, giving you a stronger impact and greater viewer recognition than you would receive from other networks. To reach our incredible audience, while supporting a highly regarded community asset, contact Ashley Kortis at 254.913.5123 or ashley@kwbu.org.

Volunteer

Support from individuals and organizations make KWBU events successful. Discover what volunteer opportunities are available by contacting Loretta Howard at 254.710.7887 or loretta@kwbu.org.

Donate your vehicle to KWBU

Support KWBU programming by donating your unwanted car, motorcycle, RV or boat! When you make a donation, your vehicle is resold at an auto auction, and the proceeds go to KWBU TV & FM. Call 1-877-KWBU-TEX or email donations@charitableautoresources.com for more information!

Get Ready for Digital TV

Are you ready?

The television industry is approaching a historic moment; on Tuesday, February 17, 2009, the nation's TV broadcasters will complete their transition to an all-digital format. Digital television (DTV) is a newer, more efficient, broadcast technology that offers viewers dramatically clearer pictures and better sound than the traditional analog system.

This change will affect millions of households that only receive over-the-air signals, as well as those that have secondary over-the-air TV sets in their bedrooms and/or kitchens.

Viewers who do not subscribe to a paid cable or satellite service and do not have a digital tuner inside their television will need to take one of the three steps outlined below to continue watching TV after the transition.

1. Purchase a TV set with a built-in digital tuner
2. Subscribe to cable, satellite or other pay TV service
3. Purchase a DTV converter box for your existing TV set

Digital-to-analog converter boxes receive digital over-the-air signals from your antenna, convert them to analog and then send the signals to your existing analog television set. Through March 31, 2009, all U.S. households are eligible to request up to two \$40 government-sponsored coupons to off-set the price of the boxes, allowing viewers to continue watching free over-the-air television on their older analog sets.



Questions?

email: dtvinfo@kwbu.org

call: 254/710-HDTV (4388)

In a half-hour special, **GET READY FOR DIGITAL TV**, PBS has joined with **THIS OLD HOUSE**'s Norm Abram and Kevin O'Connor, along with Maria Hinojosa, award-winning senior correspondent with **NOW** on PBS, to offer digital television how-to guidance and tips to ensure that viewers across America are prepared to successfully make the switch to digital television in their homes before the analog shutoff in February 2009. **GET READY FOR DIGITAL TV** will air on KWBU-TV Sunday, January 18 at 9:30 p.m.

KWBU-TV Prime Time Schedule

Listings for KWBU are as accurate as possible at print deadline. However, because some shows are offered to us - or withdrawn - on short notice, there may be changes to the actual broadcast schedule. We air scheduling information during breaks between programs and on our website to provide information about changes.

KEY: (CC) = Closed Captioning
(S) = Stereo

1 THURSDAY

7:00 Great Performances



From Vienna: The New Year's Celebration 2009 - The Vienna Philharmonic performs a rousing set of Strauss Family favorites led by Daniel Barenboim. Hosted by Julie Andrews. (S)(CC)

8:30 Cinema's Exiles: From Hitler to Hollywood

The dramatic journey of Jewish filmmakers and actors who fled Nazi Germany to America is recalled. (S)(CC)

10:30 Tavis Smiley (S)(CC)

11:00 Charlie Rose (S)(CC)

2 FRIDAY

7:00 Washington Week (S)(CC)

7:30 Now on PBS (S)(CC)

8:00 Bill Moyers Journal (S)(CC)

9:00 McLaughlin Group (S)(CC)

9:30 Consuelo Mack WealthTrack (CC)

10:00 Foreign Exchange (S)(CC)

10:30 Tavis Smiley (S)(CC)

11:00 Charlie Rose (S)(CC)

3 SATURDAY

7:00 Lawrence Welk Show
Music Memories (CC)

8:00 Classic Gospel
Israel Homecoming (S)(CC)

9:00 Keeping Up Appearances
Hyacinth looks forward to soaking up a little culture at her favorite stately home. (CC)

9:30 Vicar of Dibley
Community Spirit (S)(CC)

10:00 Austin City Limits
Lucinda Williams/Old Crow Medicine Show (S)(CC)

11:00 Great Big Sea in Concert
The band performs energetic

interpretations of Celtic-flavored songs from Newfoundland and Labrador. (S)(CC)

4 SUNDAY

7:00 Nature

The Gorilla King - Recalls the life of Titus the gorilla, from his newborn days to his rise to power as a silverback. (S)(CC)

8:00 Masterpiece Classic



Tess of the D'Urbervilles (pt 1) - A poor young woman learns she descends from aristocrats and falls prey to two very different men. (S)(CC)

10:00 Keeping Up Appearances

Hyacinth is at her wit's end with the charity shop, Councilor Nugent, Rose's love life & her Daddy! (CC)

10:30 Vicar of Dibley
Window (S)(CC)

11:00 Barbara Morgan: No Limits



The elementary school teacher overcame often tragic challenges to become a full-fledged astronaut. (S)(CC)

5 MONDAY

7:00 Antiques Roadshow
Palm Springs, California (pt 1) (S)(CC)

8:00 Story of India
Beginnings - Archaeological discoveries, DNA, climate science and oral tales cast light on India's deep past. (pt 1) (S)(CC)

9:00 Story of India

The Power of Ideas - Explore the revolutionary years after 500 BC, the Age of Buddha, using archaeology and legend. (pt 2) (S)(CC)

10:00 Rick Steves' Europe
England's Bath & York (S)(CC)

10:30 Tavis Smiley (S)(CC)

11:00 Charlie Rose (S)(CC)

6 TUESDAY

7:00 Nova

Arctic Passage: Prisoners of the Ice - Historians and forensic scientists investigate the disappearance of two Royal Navy Ships in 1845. (S)(CC)

8:00 Frontline



The Old Man and the Storm - An African-American family struggles to rebuild their homes and lives in New Orleans after Katrina. (S)(CC)

9:00 Independent Lens

Helvetica - Historians and designers discuss this popular font, used on corporate logos and government forms. (S)(CC)

10:00 Roadtrip Nation
Los Angeles, California (S)(CC)

10:30 Tavis Smiley (S)(CC)

11:00 Charlie Rose (S)(CC)

7 WEDNESDAY

7:00 Great Performances



Cyrano de Bergerac - Oscar winner Kevin Kline stars in the romantic tale of a gifted poet with an unusually large nose. (S)

9:30 From the Top at Carnegie Hall

KWBU-TV Prime Time Schedule

continued

Special Edition

Rhythm and Strings - A hypnotic performance on the marimba by sixteen-year old Joshua Jones of Chicago is showcased. (S)(CC)

- 10:00 **Tracks Ahead**
Circus Train (S)
- 10:30 **Tavis Smiley (S)(CC)**
- 11:00 **Charlie Rose (S)(CC)**

8 THURSDAY

- 7:00 **This Old House Hour**
Weston Project (pt 15) (S)(CC)
- 8:00 **Alzheimer's Disease: Facing the Facts**
This overlooked illness threatens to bankrupt the American health system, economy and spirit. (S)(CC)
- 9:00 **Soundstage**



Counting Crows: Saturday Nights & Sunday Mornings - Led by Adam Duritz, the band performs tunes from their new tightly-crafted album, including "1492." (S)(CC)

- 10:00 **Art Wolfe's Travels to the Edge**
New Zealand (S)(CC)
- 10:30 **Tavis Smiley (S)(CC)**
- 11:00 **Charlie Rose (S)(CC)**

9 FRIDAY

- 7:00 **Washington Week (S)(CC)**
- 7:30 **Now on PBS (S)(CC)**
- 8:00 **Bill Moyers Journal (S)(CC)**
- 9:00 **McLaughlin Group (S)(CC)**
- 9:30 **Consuelo Mack WealthTrack (CC)**
- 10:00 **Foreign Exchange (S)(CC)**
- 10:30 **Tavis Smiley (S)(CC)**
- 11:00 **Charlie Rose (S)(CC)**

10 SATURDAY

- 7:00 **Lawrence Welk Show**
All Time Favorites (CC)
- 8:00 **Classic Gospel**
Jerusalem (S)(CC)
- 9:00 **Keeping Up Appearances**
Hyacinth is at her wit's end with the charity shop, Councilor Nugent, Rose's

love life & her Daddy! (CC)

- 9:30 **Vicar of Dibley**
Window (S)(CC)
- 10:00 **Austin City Limits**
Paolo Nutini/Grupo Fantasma (S)(CC)
- 11:00 **Soundstage**
Counting Crows: Saturday Nights & Sunday Mornings - repeat (S)(CC)

11 SUNDAY

- 7:00 **Nature**



The Dragon Chronicles - A reptile expert uses documented science to shed light on the history and the mystery of dragons. (S)(CC)

- 8:00 **Masterpiece Classic**
Tess of the D'Urbervilles (pt 2) - Thomas Hardy's heartbreaking story of a spirited woman, violated by one man and forsaken by another. (S)(CC)
- 10:00 **Keeping Up Appearances**
Hyacinth's social standing at a church function is jeopardized when Onslow becomes more ardent. (CC)
- 10:30 **Vicar of Dibley**
Election (S)(CC)
- 11:00 **Freeway Philharmonic**
Follows seven freelance classical musicians as they struggle for positions with a major orchestra. (S)(CC)

12 MONDAY

- 7:00 **Antiques Roadshow**
Palm Springs, California (pt 2) (S)(CC)
- 8:00 **Story of India**
Spice Routes & Silk Roads - Discover the Roman Empire's greatest trading port in India and the forgotten empire of the Kushans. (pt 3) (S)(CC)
- 9:00 **Story of India**
Stages of Gold - Discover amazing achievements of India's golden age from 300 to 1000 AD and find a sacred mountain. (pt 4)(S)(CC)
- 10:00 **Rick Steves' Europe**
North Wales: Feisty and Poetic (S)(CC)
- 10:30 **Tavis Smiley (S)(CC)**
- 11:00 **Charlie Rose (S)(CC)**

13 TUESDAY

- 7:00 **Nova**
Arctic Passage: Ice Survivors - Retraces the triumphant voyage of the innovative explorer who conquered the Northwest Passage. (S)(CC)
- 8:00 **Ascent of Money**



This new special puts the current global financial crisis in the full context of financial history. (S)(CC)

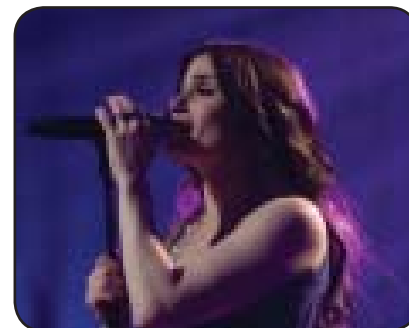
- 10:00 **Roadtrip Nation**
Brisbane to Byron Bay, Australia (S)(CC)
- 10:30 **Tavis Smiley (S)(CC)**
- 11:00 **Charlie Rose (S)(CC)**

14 WEDNESDAY

- 7:00 **Make 'Em Laugh: The Funny Business of America**
Nerds, Jerks & Oddballs: Nerds, Jerks & Oddballs: Would Ya Hit a Guy with Glasses?/Breadwinners and Homemakers: Honey, I'm Home! (pt 1) (S)(CC)
- 9:00 **Make 'Em Laugh: The Funny Business of America**
repeat
- 11:00 **Charlie Rose (S)(CC)**

15 THURSDAY

- 7:00 **This Old House Hour**
Weston Project (pt 16) (S)(CC)
- 8:00 **Rick Steves' Iran**
Explore the country's rich artistic and cultural heritage, bustling cities and countryside villages. (S)(CC)
- 9:00 **Soundstage**



Idina Menzel with Josh Groban and Ravi

KWBU-TV Prime Time Schedule

continued

Coltrane - The singer/songwriter and Tony Award winning actress performs "Better To Have Loved" and "Brave." (S)(CC)

10:00 **Art Wolfe's Travels to the Edge**
Wild Asia: Nepal and India (S)(CC)

10:30 Tavis Smiley (S)(CC)

11:00 Charlie Rose (S)(CC)

16 FRIDAY

7:00 Washington Week (S)(CC)

7:30 Now on PBS (S)(CC)

8:00 Bill Moyers Journal (S)(CC)

9:00 McLaughlin Group (S)(CC)

9:30 Consuelo Mack WealthTrack (CC)

10:00 Foreign Exchange (S)(CC)

10:30 Tavis Smiley (S)(CC)

11:00 Charlie Rose (S)(CC)

17 SATURDAY

7:00 **Lawrence Welk Show**
French Show (CC)

8:00 **Classic Gospel**
Australian Homecoming (S)(CC)

9:00 **Keeping Up Appearances**
Hyacinth's social standing at a church function is jeopardized when Onslow becomes more ardent. (CC)

9:30 **Vicar of Dibley**
Election (S)(CC)

10:00 **Austin City Limits**
Foo Fighters (S)(CC)

11:00 **Soundstage**
Idina Menzel with Josh Groban and Ravi Coltrane (S)(CC)

18 SUNDAY

7:00 **Nature**
Arctic Bears - As winters become warmer, grizzlies converge on with what was once the icy domain of the polar bear. (S)(CC)

8:00 **Masterpiece Classic**



Wuthering Heights (pt 1) - A young gypsy boy is adopted by the Earnshaw family and falls in love with his stepsister, Cathy. (S)(CC)

9:30 **Get Ready for Digital TV**
This Old House's Kevin and Norm answer

questions about digital converter boxes, DTV and HDTV. (S)(CC)

10:00 **Keeping Up Appearances**
Hyacinth enjoys a quiet family christening, until pandemonium breaks loose. (S)(CC)

10:30 **Vicar of Dibley**
Animals (S)(CC)

11:00 **Colorblind**
Former classmates discuss the profound impact their African-American teacher had on their lives. (S)(CC)

19 MONDAY

7:00 **Antiques Roadshow**
Palm Springs, California (pt 3) (S)(CC)

8:00 **Story of India**
The Meeting of Two Oceans - The epic story the coming of Islam to the Indian subcontinent and the Moghul Empire are explored. (pt 5) (S)(CC)

9:00 **Story of India**
Freedom - The time of Britain's occupation of India, the Raj, and India's struggle for freedom are examined. (pt 6) (S)(CC)

10:00 **Rick Steves' Europe**
Edinburgh (S)(CC)

10:30 Tavis Smiley (S)(CC)

11:00 Charlie Rose (S)(CC)

20 TUESDAY

7:00 **Nova**



The Big Energy Gamble - Examine California's energy conservation efforts and search for new sources of carbon-free power. (S)(CC)

8:00 **Frontline**
Dreams of Obama - Pushes beyond the headlines to examine the personal and political biography of the 44th president. (S)(CC)

9:00 **Independent Lens**
Please Vote for Me - Children compete for the position of Class Monitor in an experiment with democracy in China. (S)(CC)

10:00 **Roadtrip Nation**
Newcastle to Sydney, Australia (S)(CC)

10:30 Tavis Smiley (S)(CC)

11:00 Charlie Rose (S)(CC)

21 WEDNESDAY

7:00 **Make 'Em Laugh: The Funny Business of America**
The Knockabouts: Slip on a Banana Peel/The Groundbreakers: When I'm Bad, I'm Better (pt 2) (S)(CC)

9:00 **Make 'Em Laugh: The Funny Business of America**
repeat

11:00 Charlie Rose (S)(CC)

22 THURSDAY

7:00 **This Old House Hour**
Brooklyn Project (pt 1) (S)(CC)

8:00 **Telling the Truth: The Best in Broadcast Journalism**



Bob Woodruff of ABC News gets in inside story on the year's best television and radio reporting. (S)(CC)

9:00 **Soundstage**



Foreigner - The rock act performs "Hot Blooded," "Double Vision" and more smash hits from the 70s and 80s. (S)(CC)

10:00 **Art Wolfe's Travels to the Edge**
Mexico: Baja (S)(CC)

10:30 Tavis Smiley (S)(CC)

11:00 Charlie Rose (S)(CC)

23 FRIDAY

7:00 Washington Week (S)(CC)

7:30 Now on PBS (S)(CC)

8:00 Bill Moyers Journal (S)(CC)

9:00 McLaughlin Group (S)(CC)

9:30 Consuelo Mack WealthTrack (CC)

10:00 Foreign Exchange (S)(CC)

KWBU-TV Prime Time Schedule

continued

10:30 Tavis Smiley (S)(CC)

11:00 Charlie Rose (S)(CC)

24 SATURDAY

7:00 **Lawrence Welk Show**
Musical Tour of Europe (CC)

8:00 **Classic Gospel**
London Homecoming (S)(CC)

9:00 **Keeping Up Appearances**
Hyacinth enjoys a quiet family christening, until pandemonium breaks loose. (CC)

9:30 **Vicar of Dibley**
Animals (S)(CC)

10:00 **Austin City Limits**
Manu Chao (S)(CC)

11:00 **Soundstage**
Foreigner (S)(CC)

25 SUNDAY

7:00 Nature



Is that Skunk? - Intrepid researchers track skunks and uncover how they hunt, forage, mate and raise their babies. (S)(CC)

8:00 **Masterpiece Classic**
Wuthering Heights (pt 2) - After a long absence, Heathcliff returns as a rich man and seeks revenge on those who wronged him. (S)(CC)

9:00 **Egalite for All: Toussaint Louverture and the Haitian Revolution**



The Haitian Revolution was a movement that has been called the beginning of universal human rights. (S)(CC)

10:00 Keeping Up Appearances (CC)

10:30 **Vicar of Dibley**
Dibley Live (S)(CC)

11:00 **Washington National Cathedral: A New Century, A New Calling**
Explores the history and present life of the Gothic masterpiece as it marks its 100th anniversary. (S)(CC)

26 MONDAY

7:00 **Antiques Roadshow**
Dallas, Texas (pt 1) - Jaw-dropping finds include an 1847 painting by James Henry Beard titled "The Illustrious Guest." (S)(CC)

8:00 **American Experience**
The Trials of J. Robert Oppenheimer - A complex and revealing portrait of the American scientist known as "The Father of the Atomic Bomb." (S)(CC)

10:00 **Rick Steves' Europe**
Naples and Pompeii (S)(CC)

10:30 Tavis Smiley (S)(CC)

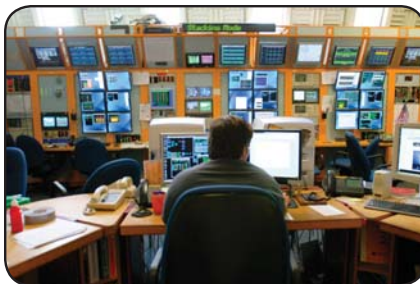
11:00 Charlie Rose (S)(CC)

27 TUESDAY

7:00 **Nova**
The Incredible Journey of the Butterflies - Journey into the fascinating world of the Monarch butterfly and explore its migratory odyssey. (S)(CC)

8:00 **Frontline/World**
Getting Out of Gitmo (S)(CC)

9:00 Independent Lens



The Atom Smashers - American physicists lead an international search for the Higgs Boson, the "holy grail" of physics. (S)(CC)

10:00 **Roadtrip Nation**
Canberra to Melbourne, Australia (S)(CC)

10:30 Tavis Smiley (S)(CC)

11:00 Charlie Rose (S)(CC)

28 WEDNESDAY

7:00 **Make 'Em Laugh: The Funny Business of America**
Wiseguys and Smart-Alecks: Never Give a Sucker an Even Break/Satire and Parody: Sock It to Me? (pt 3) (S)(CC)

9:00 **Make 'Em Laugh: The Funny Business of America**
repeat

11:00 Charlie Rose (S)(CC)

29 THURSDAY

7:00 **This Old House Hour**
Brooklyn Project (pt 2) (S)(CC)

8:00 **Wings Over the Alamo**
Interviews, photos and film clips capture the enduring influence of aviation in San Antonio, Texas. (S)(CC)

9:00 Soundstage



B.B. King - The reigning king of blues plays "The Thrill Is Gone," "One Kind Favor" and staggering guitar jams. (S)(CC)

10:00 **Art Wolfe's Travels to the Edge**
The Kingdom of Bhutan (S)(CC)

10:30 Tavis Smiley (S)(CC)

11:00 Charlie Rose (S)(CC)

30 FRIDAY

7:00 Washington Week (S)(CC)

7:30 Now on PBS (S)(CC)

8:00 Bill Moyers Journal (S)(CC)

9:00 McLaughlin Group (S)(CC)

9:30 Consuelo Mack WealthTrack (CC)

10:00 Foreign Exchange (S)(CC)

10:30 Tavis Smiley (S)(CC)

11:00 Charlie Rose (S)(CC)

31 SATURDAY

7:00 **Lawrence Welk Show**
Time Was (S)(CC)

8:00 **Classic Gospel**
Irish Homecoming (S)(CC)

9:00 Keeping Up Appearances (CC)

9:30 **Vicar of Dibley**
Dibley Live (S)(CC)

10:00 **Austin City Limits**
Nick Lowe/The Swell Season: Glen Hansard & Marketa (S)(CC)

11:00 **Soundstage**
B.B. King (S)(CC)

KWBU-TV Daytime Schedule



TIME	SUNDAY	MONDAY	TUESDAY	WEDNESDAY	THURSDAY	FRIDAY	SATURDAY
6 AM	Mister Rogers' Neighborhood	Lilias!	Body Electric			Power Yoga	Thomas & Friends
6:30 AM	Barney & Friends	Martha Speaks					Bob the Builder
7 AM	Jay Jay the Jet Plane	Curious George					Biscuit Brothers
7:30 AM	Betsy's Kindergarten Adventures	Sid the Science Kid					Martha Speaks
8 AM	Super Why!	Super Why!					Bob the Builder
8:30 AM	Ribert & Robert's Wonderworld	Clifford the Big Red Dog					Thomas & Friends
9 AM	Mama Mirabelle's Home Movies	Sesame Street					Lomax: Hound of Music
9:30 AM	Big Comfy Couch						Wishbone
10 AM	Biz Kid\$	Between the Lions					Wunderkind Little Amadeus
10:30 AM	DragonflyTV *	WordWorld					Motorweek
11 AM	From the Top	A Place of Our Own					Hands on: Crafts for Kids
11:30 AM	McLaughlin Group	Los Ninos en Su Casa					America's Test Kitchen
NOON	John McLaughlin's One on One	Made in Spain	Simply Ming	Ciao Italia	Taste This!	Jacques Pepin	Cook's Country from America's Test Kitchen
12:30 PM	To the Contrary	Garden Paths	Garden Smart	Victory Garden	Central Texas Gardener	P. Allen Smith's Garden Home	Julia Child
1 PM	Texas Aggie Band Show +	Best of The Joy of Painting	Scheewe Art Workshop	Jerry Yarnell	Beauty of Oil Painting	Best of Simply Painting: Across Europe ++	Burt Wolf
1:30 PM	Simple Living **	Fons and Porter	Sewing with Nancy	Needle Arts Studio	Martha's Sewing Room	Quilt in a Day	Victory Garden
2 PM	Texas Monthly Talks	Reading Rainbow					Hometime
2:30 PM	e ²	Dragon Tales	Barney & Friends			Mister Rogers' Neighborhood	New Yankee Workshop
3 PM	Antiques Roadshow	Arthur					Texas Parks & Wildlife
3:30 PM		WordGirl					Central Texas Gardener
4 PM	Beads, Baubles and Jewels	Fetch! with Ruff Ruffman				Electric Company (sts 1/23)	Eat This!***
4:30 PM	Glass with Vicki Payne	Cyberchase					Quilting Arts*
5 PM	Knit & Crochet Today	Maya & Miguel					Scrapbook Memories
5:30 PM	Bake Decorate Celebrate!	Nightly Business Report					Woodturning Workshop
6 PM	America's Heartland	Newshour with Jim Lehrer					Woodwright's Shop
6:30 PM	Wild Chronicles						This Old House

*Electric Company (sts 1/25); +Great Decisions (sts 1/18); **Living Smart (sts 1/11); ++Terry Madden (sts 1/16); ***Donna Dewberry (sts 1/14)

KWBU-TV Overnight Schedule

1 THURSDAY

12:30am Tavis Smiley
1:00am Live From Lincoln Center "New York Philharmonic New Year's Eve Gala Concert"
3:00am Independent Lens "Operation Filmmaker"
4:30:00 Get Ready for Digital TV
5:00am Nova "Is There Life on Mars?"

2 FRIDAY

12:00am Great Performances "From Vienna: The New Year's Celebration 2009"
1:30am Cinema's Exiles: From Hitler to Hollywood
3:30am Great Performances "From Vienna: The New Year's Celebration 2009"

3 SATURDAY

12:00am Washington Week
12:30am Now on PBS
1:00am Bill Moyers Journal
2:00am Cinema's Exiles: From Hitler to Hollywood
4:00am This Old House Hour

4 SUNDAY

12:00am Nova "Is There Life on Mars?"
1:00am Frontline "The War Briefing"
2:00am How Art Made the World "Once Upon a Time" (pt 4)
3:00am Washington Week
3:30am Now on PBS
4:00am Bill Moyers Journal

5 MONDAY

12:00am Masterpiece Classic "Tess of the D'Urbervilles" (pt 1)
2:00am Nature "The Gorilla King"
3:00am Live From Lincoln Center "New York Philharmonic New Year's Eve Gala Concert"

6 TUESDAY

12:00am The Story of India "Beginnings" (pt 1)
1:00am The Story of India "The Power of Ideas" (pt 2)
2:00am Masterpiece Classic "Tess of the D'Urbervilles" (pt 1)
4:00am Nature "The Gorilla King"

7 WEDNESDAY

12:00am Frontline "The Old Man and the Storm"
1:00am Nova "Arctic Passage: Prisoners of the Ice"
2:00am The Story of India "Beginnings" (pt 1)
3:00am The Story of India "The Power of Ideas" (pt 2)
4:00am Antiques Roadshow

8 THURSDAY

12:00am Great Performances "Cyrano de Bergerac"
2:30am From the Top at Carnegie Hall Special Edition "Rhythm and Strings"
3:00am Frontline "The Old Man and the Storm"
4:00am Nova "Arctic Passage:

9 FRIDAY

12:00am This Old House Hour
1:00am Soundstage "Counting Crows"
2:00am Great Performances "Cyrano de Bergerac"
4:30am From the Top at Carnegie Hall Special Edition "Rhythm and Strings"

10 SATURDAY

12:00am Washington Week
12:30am Now on PBS
1:00am Bill Moyers Journal
2:00am Soundstage "Counting Crows"
3:00am Antiques Roadshow
4:00am This Old House Hour

11 SUNDAY

12:00am Nova "Arctic Passage: Prisoners of the Ice"
1:00am Frontline "The Old Man and the Storm"
2:00am How Art Made the World "To Death and Back" (pt 5)
3:00am Washington Week
3:30am Now on PBS
4:00am Bill Moyers Journal

12 MONDAY

12:00am Masterpiece Classic "Tess of the D'Urbervilles" (pt 2)
2:00am Great Performances "Cyrano de Bergerac"
4:30am From the Top at Carnegie Hall Special Edition "Rhythm and Strings"

13 TUESDAY

12:00am The Story of India "Spice Routes & Silk Roads" (pt 3)
1:00am The Story of India "Ages of Gold" (pt 4)
2:00am Masterpiece Classic "Tess of the D'Urbervilles" (pt 2)
4:00am Nature "The Dragon Chronicles"

14 WEDNESDAY

12:00am Frontline
1:00am Nova "Arctic Passage: Ice Survivors"
2:00am The Story of India "Spice Routes & Silk Roads" (pt 3)
3:00am The Story of India "Ages of Gold" (pt 4)
4:00am Antiques Roadshow

15 THURSDAY

12:00am Make 'Em Laugh: The Funny Business of America (pt 1)
2:00am Independent Lens "Helvetica"
3:00am Frontline
4:00am Nova "Arctic Passage: Ice Survivors"

16 FRIDAY

12:00am This Old House Hour
1:00am Soundstage "Idina Menzel"
2:00am Make 'Em Laugh: The Funny Business of America (pt 1)
4:00am Antiques Roadshow

17 SATURDAY

12:00am Washington Week
12:30am Now on PBS
1:00am Bill Moyers Journal
2:00am Soundstage "Idina Menzel"
3:00am Antiques Roadshow
4:00am This Old House Hour

18 SUNDAY

12:00am Nova "Arctic Passage: Ice Survivors"
1:00am Frontline
2:00am Independent Lens "Helvetica"
3:00am Washington Week
3:30am Now on PBS
4:00am Bill Moyers Journal

19 MONDAY

12:00am Masterpiece Classic "Wuthering Heights" (pt 1)
1:30am Get Ready for Digital TV
2:00am Make 'Em Laugh: The Funny Business of America (pt 1)
4:00am Nova "Arctic Passage: Ice Survivors"

20 TUESDAY

12:00am The Story of India "Meeting of Two Oceans" (pt 5)
1:00am The Story of India "Freedom" (pt 6)
2:00am Masterpiece Classic "Wuthering Heights" (pt 1)
3:30am Get Ready for Digital TV
4:00am Nature "Arctic Bears"

21 WEDNESDAY

12:00am Frontline
1:00am Nova "Big Energy Gamble"
2:00am The Story of India "Meeting of Two Oceans" (pt 5)
3:00am The Story of India "Freedom" (pt 6)
4:00am Antiques Roadshow

22 THURSDAY

12:00am Make 'Em Laugh: The Funny Business of America (pt 2)
2:00am Independent Lens "Please Vote for Me"
3:00am Frontline
4:00am Nova "The Big Energy Gamble"

23 FRIDAY

12:00am This Old House Hour
1:00am Soundstage "Foreigner"
2:00am Make 'Em Laugh: The Funny Business of America (pt 2)
4:00am Antiques Roadshow

24 SATURDAY

12:00am Washington Week
12:30am Now on PBS
1:00am Bill Moyers Journal
2:00am Soundstage "Foreigner"
3:00am Antiques Roadshow
4:00am This Old House Hour

25 SUNDAY

12:00am Nova "Big Energy Gamble"
1:00am Frontline
2:00am Independent Lens "Please Vote for Me"
3:00am Washington Week
3:30am Now on PBS

4:00am Bill Moyers Journal

26 MONDAY

12:00am Masterpiece Classic "Wuthering Heights" (pt 2)
1:00am Egalite for All: Toussaint Louverture and the Haitian Revolution
2:00am Make 'Em Laugh: The Funny Business of America (pt 2)
4:00am Nova "The Big Energy Gamble"

27 TUESDAY

12:00am The Trials of J. Robert Oppenheimer: American Experience
2:00am Masterpiece Classic "Wuthering Heights" (pt 2)
3:00am Egalite for All: Toussaint Louverture and the Haitian Revolution
4:00am Nature "Is That Skunk?"

28 WEDNESDAY

12:00am Frontline/World
1:00am Nova "Butterfly"
2:00am The Trials of J. Robert Oppenheimer: American Experience
4:00am Antiques Roadshow

29 THURSDAY

12:00am Make 'Em Laugh: The Funny Business of America (pt 3)
2:00am Independent Lens "Atom Smashers"
3:00am Frontline/World
4:00am Nova "Butterfly"

30 FRIDAY

12:00am This Old House Hour
1:00am Soundstage "B.B. King"
2:00am Make 'Em Laugh: The Funny Business of America (pt 3)
4:00am Antiques Roadshow

31 SATURDAY

12:00am Washington Week
12:30am Now on PBS
1:00am Bill Moyers Journal
2:00am Soundstage "B.B. King"
3:00am Antiques Roadshow
4:00am This Old House Hour

2/1 SUNDAY

12:00am Nova "Butterfly"
1:00am Frontline/World
2:00am Independent Lens "Atom Smashers"
3:00am Washington Week
3:30am Now on PBS
4:00am Bill Moyers Journal

WEEKDAYS

5-6 am Children's Programming

WEEKENDS

5-6 am Children's Programming

For more complete listings of our Overnight Schedule, visit our website at www.kwbu.org.

The KWBU HD Channel is a 24-hour-a-day, seven-day-a-week fully-packaged program service of High Definition and Standard Definition widescreen programming. You can watch KWBU-DT on Time Warner channel 1004, Grande channel 404, over-the-air with an antenna channel 34.1.

Highlights:

THE NEWSHOUR WITH JIM LEHRER
Weekdays at 5:00 p.m.

THE THIS OLD HOUSE HOUR
Thursdays at 7:00 p.m.

AUSTIN CITY LIMITS
Saturdays at 8:00 PM

THIS OLD HOUSE
Saturdays at 12:30 PM

ASK THIS OLD HOUSE
Saturdays at 1:00 PM

THE WOODWRIGHT'S SHOP
Saturdays at 2:00 PM

ANTIQUES ROADSHOW
Mondays at 7:00 PM
Thursdays at 8:00 PM

SOUNDSTAGE
Thursdays at 9:00 PM

GREAT PERFORMANCES "From Vienna: The New Year's Celebration 2009"
1/1 at 7:00 PM

CINEMA'S EXILES: FROM HITLER TO HOLLYWOOD
1/1 at 8:30 PM

NATURE "The Gorilla King"
1/4 at 7:00 PM

MASTERPIECE CLASSIC "Tess of the D'Urbervilles"
1/4 and 1/11 at 8:00 PM

THE STORY OF INDIA
Mondays at 8:00 PM and 9:00 PM (1/5 - 1/19)
NOVA "Secrets of the Parthenon"
1/6 at 7:00 PM

GREAT PERFORMANCES "Cyrano de Bergerac"
1/7 at 7:00 PM

NATURE "The Dragon Chronicles"
1/11 at 7:00 PM

NOVA "Butterfly"
1/13 at 7:00 PM

KWBU DIGITAL PROGRAM SERVICE



KWBU-DT: PBS HD (Time Warner channel 1004, Grande channel 404, over-the-air with an antenna channel 34.1)



Create: a channel celebrating the life-enriching endeavors of cooking, painting, crafting, home improvement, collecting and travel (Time Warner channel 156, Grande channel 173, over-the-air with an antenna channel 34.2)



KWBU: simulcast of our analog signal (Time Warner & Grande channel 4, over-the-air with an antenna channel 34.3)



V-me: the first Spanish-language public television network created for America's Latino families (Time Warner channel 459, Grande channel 189, over-the-air with an antenna channel 34.4)

MAKE 'EM LAUGH: THE FUNNY BUSINESS OF AMERICA
Wednesdays at 7:00 PM & 9:00 PM (1/14 - 1/28)

NATURE "Arctic Bears"
1/18 at 7:00 PM

MASTERPIECE CLASSIC "Wuthering Heights"
1/18 and 1/25 at 8:00 PM

GET READY FOR DIGITAL TV
1/18 at 9:30PM

NOVA "Inside the Spy Factory"
1/20 at 7:00 PM

NATURE "Is that Skunk?"
1/25 at 7:00 PM

EGALITE FOR ALL: TOUSSAINT LOUVERTURE AND THE HAITIAN REVOLUTION
1/25 at 9:00 PM

THE TRIALS OF J. ROBERT OPPENHEIMER: AMERICAN EXPERIENCE
1/26 at 8:00 PM

NOVA "Rats"
1/27 at 7:00 PM

INDEPENDENT LENS "The Atom Smashers"
1/20 at 9:00 PM

Saturday Marathons In January on Create™ TV

Spend your Saturdays with themed marathons

Create™ TV's Saturdays are filled with a full day of how-to programs focusing on a specific theme. Explore a country, from history to food. Prepare for a holiday, from traditions to recipes. There's a Create Saturday to fit any lifestyle. See marathon descriptions below.

January 3: Jacques' Day

Today is all about Master Chef Jacques Pepin. See what fires him up to cook! While his specialty is French food, he'll be teaming up with some of his culinary contemporaries like, Maryann Esposito of Ciao Italia and Rick Bayless host of Mexico – One Plate at a Time. You'll also see Jacques in a candid conversation with violin virtuoso Itzhak Perlman. It's Jacques' Day!

January 10: Spain...On the Road Again

What do you get when you put an Oscar winning actress, a Master Chef, a culinary author and a Spanish actress, driving in a car across a European country? You get the fun series, Spain . . . On the Road Again, starring Gwyneth Paltrow, Mario Batali, Mark Bittman and Claudia Bassols. This foursome takes us all over Spain to eat, explore and learn. It's the road trip of a lifetime!

January 17: Caught on Canvas

Nature is all around us, and our CREATE artists have caught every beautiful detail of it on canvas. Bob Ross, Donna Dewberry, Gary Spetz and others, paint their way into our hearts with flowers, waterfalls and beach scenes that are absolutely breathtaking. Bring nature to life on your own canvas. Our CREATE artists will show you how.

January 24: Tropical Getaways

Is the cold weather giving you the blues? Are you longing to feel the sun on your face and the sand between your toes? Spend the day with CREATE globe trekkers, Burt Wolf, Rudy Maxa, and Darley Newman as they travel to Hawaii, Mexico and the U.S. Virgin Island. All day fun in the sun is waiting for you!

January 31: Tailgating Time

The big game is coming up, and whether you're having a parking lot party or folks in your home, we'll show you how to prepare a tailgating menu that will have your guests, licking their fingers and wanting more! Grill masters Steven Raichlen and Rick Browne have the barbecue pit fired up. They'll have perfectly cooked steak, chicken wings and shrimp. While chefs Chris Kimball and Rick Bayless prepare simple dishes, like chili and tacos that will feed a big crowd. If your team isn't winning who cares, you'll have good food to get you through the fourth quarter.

About Create™ TV

More often called "Do-it-yourself," the program genres seen on Create™ TV include viewers' favorite public television series and specials on cooking, travel, arts and crafts, gardening, home improvement and other lifestyle interests. The programs seen on Create™ TV come from American Public Television, The National Educational Telecommunications Association (NETA) and Public Broadcasting Service (PBS).

Create™ TV was launched to serve viewers' increasing interest in "do-it-yourself" programs and was designed for round-the-clock broadcast of the most popular lifestyle and how-to programming seen on public television – where lifestyle programming got its start!

Watch KWBU's Create™ TV twenty-four hours a day seven days a week on Time Warner channel 156, Grande Communications channel 173, or over-the-air with an antenna channel 34.2. For a complete program listing or for more information about Create™ TV, visit www.createtv.com.



KWBU-TV Underwriters



America's Heartland
TEXAS FARM BUREAU

Arthur
BIRD-KULTGEN FORD

Big Comfy Couch
SHIPLEY DO-NUTS

Charlie Rose
CENTRAL NATIONAL BANK

Eat This!
MCLENNAN COUNTY ELECTRICAL CO-OP

General Support
BAYLOR/WACO FOUNDATION
CLEAR CHANNEL COMMUNICATIONS
OFFICE OF INJURED EMPLOYEE COUNCIL
RAPOPORT FOUNDATION

Hometime
DEALERS ELECTRICAL SUPPLY

Jerry Yarnell School of Fine Art
THE FRAME SHOP & GALLERY

McLaughlin Group
RAPOPORT FOUNDATION

Newshour with Jim Lehrer
CHARLES D. JONES CAPITAL MANAGEMENT
SPECIALTY PROPERTY LTD

New Yankee Workshop
DEALERS ELECTRICAL SUPPLY

Now
RAPOPORT FOUNDATION

Sesame Street
SHIPLEY DO-NUTS

Sewing with Nancy
BERNINA

This Old House
DEALERS ELECTRICAL SUPPLY

This Old House Hour
DEALERS ELECTRICAL SUPPLY

KWBU-FM Underwriters



BAYLOR UNIVERSITY COLLEGE
OF ARTS & SCIENCES

BAYLOR/WACO FOUNDATION

CLIFTON FOUNDATION

COOPER FOUNDATION

DAVID SCHLEICHER

DR. CHIA LIEN WANG

GREEN MOUNTAIN ENERGY

HANKAMER SCHOOL OF BUSINESS,
BAYLOR UNIVERSITY

JOHN MCANALLY, P.C. CERTIFIED PUBLIC
ACCOUNTANTS

MARTIN MUSEUM OF ART

MICHAEL HERNANDEZ

RAPOPORT FOUNDATION

CRIMINAL DEFENSE ATTORNEY
RUSS HUNT

TEXAS STATE TECHNICAL COLLEGE

TIME WARNER CABLE

U MONTHLY MAGAZINE

WACO SYMPHONY ORCHESTRA

Thank You...

... to the community-minded companies who sponsor our outstanding programs and support a variety of KWBU activities and events. To learn more about sponsorship opportunities, contact

Ashley Kortis
at 254.710.7886 or
ashley@kwbu.org.

ELGOURMET.COM

V-me dishes up an all-new food lineup with the U.S. debut of original shows from popular Latin American food network elgourmet.com, a channel produced by Argentina-based Pramer SCA. With engaging personalities, tips and techniques from top Latin chefs, recipes and more, the daily elgourmet.com block on V-me is a fresh approach to Spanish-language food and lifestyle television.

As the exclusive U.S. source for elgourmet.com programming, V-me will air the block every weekday from 2:00 – 3:00 and Sundays from 11:00 – 12:00pm. In addition to the daily TV block, www.VmeTV.com will feature recipes, additional tips and techniques, and bonus content. Featured series include:

Mondays and Fridays

2:00pm *Donato Cucina* - In a culinary tour of his native Italy, chef Donato De Santis prepares typical delicacies from Piedmont, Liguria, Tuscany, Sicily and other regions, while revealing colorful details of local life in each city and town.

2:30pm *Sumo Placer* - Charismatic chef Sumito Estévez introduces viewers to the warmth, spirit and exquisite flavors of Venezuelan cuisine, where small details lead to great dishes.

Tuesdays and Thursdays

2:00pm *Recetas en Cadena* - Alfonso Cadena prepares original recipes in his unique fusion style. Born in Mexico to a family of cooks, the young chef combines his French roots and culinary training with ideas and flavors from different Latin cultures.

2:30pm *All Uso Nostro* - Donato De Santis honors Italian immigrants to the Americas, presenting New World versions of his country's famous recipes, along with colorful anecdotes about the origin of each dish.

Wednesdays

2:00pm *ABC Gourmet: Sopas Y Guisos* - A series of clear, educational cooking classes, ABC Gourmet devotes a full season to soups and stews. Expert teachers reveal tricks and offer tips on the best ingredients, cooking techniques and presentation.

2:30pm *Pasteleria.MX* - Young, well-known chef Paulina Abascal reveals the art of Mexican pastry making. Her personal charisma and practical advice result in the most exquisite delicacies.

V-me can be found on over-the-air digital channel 34.4, Time Warner Cable channel 459 and Grande Communications channel 189.

KWBU-FM Highlights

SIEGEL

NORRIS

BLOCK



Robert Siegel



Melissa Block



Michele Norris

All Things.

Considered

Driving home the news every day.

With local host, Derek Smith



Listen Weekdays at 4 p.m.
on 103.3 KWBU-FM
www.kwbu.org



Wait Wait...Don't Tell Me!

The Oddly Informative News Quiz from NPR



NPR's *Wait Wait...Don't Tell Me!* takes a fast-paced, irreverent look at the news of the world—and the weird. Now in its sixth year, the show offers a modern and sometimes raucous twist on the old-time radio quiz show, mining NPR news stories for quiz questions. The host is Peter Sagal, who is an award-winning playwright and father of three in his spare time. America's favorite newscaster, NPR's Carl Kasell, is the show's official judge and scorekeeper.

Each week, Sagal quizzes the panelists and listeners to determine just how closely they paid attention to the week's

news. He serves up questions in all forms: lightning rounds, tape from NPR news shows, multiple choice, identify the "fake" story and fill-in-the-blank limericks. Listeners call 888-WAIT-WAIT for a chance to win the most coveted prize in all of public radio: a custom-recorded greeting by Carl Kasell for their home's answering machine or voice mail.

One of the most popular segments is "Who's Carl This Time?" in which Mr. Kasell recites quotes from the week's newsmakers as contestants guess whom he is impersonating. "This is the only show where you'll get to hear NPR's most senior newscaster impersonate Britney Spears," the *Wait Wait* producers say. Another signature *Wait Wait...Don't Tell Me!* game, "Not My Job," invites well-known local and national personalities to answer questions that are out—way out—of their area of expertise.

A rotating trio of witty panelists completes the Wait Wait team. They include author and humorist Roy Blount Jr., Boston Globe writer Charlie Pierce, Washington Post columnist Roxanne Roberts, writer/performer Adam Felber, BBC contributor Sue Ellicott, author P.J. O'Rourke, comedian Paula Poundstone and humorist/pundit Mo Rocca.

Wait Wait...Don't Tell Me! is a co-production of NPR and Chicago Public Radio. The program, created by the same folks who produce *Car Talk*, debuted nationally in 1998 and quickly established itself as one of public radio's favorite weekend programs.

Visit the show's Web site at <http://waitwait.npr.org> to take the weekly news quiz, meet the panelists and crew, and check out five years of archived shows.

Listen to *Wait Wait...Don't Tell Me!* on Saturdays at 10:00 a.m. and Sundays at 1:00 p.m. on member supported 103.3 KWBU-FM.

Capitol Steps – Politics Takes a Holiday New Year Edition

January 1 at
7:00 p.m.



TIME	SUNDAY	MONDAY	TUESDAY	WEDNESDAY	THURSDAY	FRIDAY	SATURDAY
MIDNIGHT	BBC World Service						
1 AM	BBC World Service						
2 AM	BBC World Service						
3 AM	BBC World Service						
4 AM	BBC World Service	Morning Edition					BBC World Service
5 AM	Speaking of Faith	Voice of the Arts at 4:50 am & 8:50 am Star Date at 5:40 am					The Changing World
6 AM	With Heart and Voice	Dot Org at 5:06 am on Thursdays & 6:36 am on Wednesdays Local news headline from the Waco <i>Tribune-Herald</i> at 6:04 am, 7:04 am and 8:04 am					Weekend Edition Saturday
7 AM	Weekend Edition Sunday						Weekend Edition Saturday
8 AM	Weekend Edition Sunday						Weekend Edition Saturday
9 AM	A Prairie Home Companion	Classical Music					Car Talk
10 AM	A Prairie Home Companion	Writer's Almanac at 9 am Voice of the Arts at 11:59 am & 2:59 pm					Wait Wait Don't Tell Me
11 AM	Car Talk	NPR Newscast at 10 am, 11 am, Noon, 1 pm and 2 pm					You Bet Your Garden
NOON	Car Talk						Speaking of Faith
1 PM	Wait Wait Don't Tell Me					TOTN Science Friday	Texas Matters
2 PM	From the Top						Latino USA
3 PM	Music at Baylor	Fresh Air Star Date at 3:58					Tavis Smiley Show
4 PM	Weekend All Things Considered	All Things Considered					This American Life
5 PM		Dot Org at 4:33 pm & 6:32 pm on Tuesdays Dot Org at 5:32 pm on Thursdays					Weekend All Things Considered
6 PM	This American Life	Voice of the Arts at 4:34 pm & 6:59 pm Engines of Our Ingenuity on Wednesdays at 4:44 pm & Thursdays at 6:44 pm				Latino USA	A Prairie Home Companion
7 PM	Fresh Air Weekend	Music at Baylor	From the Top	Classical Guitar Alive	Jazz from Lincoln Center	Riverwalk Live from The Landing	American Routes
8 PM	Tavis Smiley Show	San Francisco Symphony	Classical Concert	Evening Jazz with Bob Parlocha			American Routes
9 PM							Beale Street Caravan
10 PM	Celtic Connection	BBC World Service					
11 PM	Hearts of Space	BBC World Service					

TIME	SUNDAY	MONDAY	TUESDAY	WEDNESDAY	THURSDAY	FRIDAY	SATURDAY
MIDNIGHT	Classical Music	Jazz with Bob Parlocha					Classical Music
1 AM							
2 AM							
3 AM							
4 AM							
5 AM	BBC News						
6 AM	Sound & Spirit	Morning Edition					You Bet Your Garden
7 AM	Sunday Baroque	Tell Me More					Bob Edwards Weekend
8 AM							
9 AM		Diane Rehm					Weekend Edition
10 AM	Weekend Edition	Fresh Air					Classical Music
11 AM		Day to Day					
NOON	Whad'Ya Know	Talk of the Nation					
1 PM		PRI's The World					
2 PM	World of Opera	All Things Considered					
3 PM							
4 PM							
5 PM	Texas Matters	Jazz Profiles					
6 PM	Wait Wait Don't Tell Me						
7 PM	Mountain Stage	Fresh Air					Piano Jazz
8 PM		Diane Rehm					Jazzset
9 PM	Thistle & Shamrock	BBC News					Afropop Worldwide
10 PM	Echoes	World Cafe					Sounds Eclectic
11 PM							



KWBU-FM HD-2 is streaming live at www.kwbu.org. Check us out!



President's Circle

Phil & Yvette Adkins
 Mary G. Baker
 Lauralou Baurer
 Barrett Building
 Libby & Bill Bellinger
 Brian & Melissa Bivona
 Catherine Bolton Brown
 The Bolton Foundation
 Frances Callan
 Dr. Corey Carbonara
 Drs. Tom Charlton & Rebecca Sharpless
 Clifton Foundation
 Martha & Tom Clowe
 Meg Cooper/Ralph Cooper, PhD.,
 Attorney-at-Law
 Ann and Harold Cunningham
 Mary Ruth & Malcolm Duncan
 Dunn Remodeling
 David & Valerie Fallas

Festive Occasions
 Mr. & Mrs. Ted Getterman, Jr.
 Brenda Griffey
 John Hampton
 Jim & Nell Hawkins
 Susan Hill
 Insurors of Texas
 Jaynes, Reitmeier, Boyd & Therrell, PC
 Dr. Jerry Johnson
 David Kultgen
 Sara Norman Lee
 Dr. Bonnie A. Lesley
 Janette Maberry
 Dr. & Mrs. Stan Madden
 John McNamara
 Paula & Kenneth Moerbe
 W.M. O'Hare
 Ambassador & Mrs. Lyndon Olson, Jr.
 Jim Petit & Jo Ann Bristol

Randy & Diana Ramey
 Bernard & Audre Rapoport Foundation
 Kristen Schroeder Simpson
 John & Debbie Ucci
 Patrick & Catherine Valentine
 James G. & Patty M. Vaughan
 Waco Tribune Herald
 Diane & Henry Walbesser
 Dr. Chia-Lien Wang & Michael
 Hernandez
 Drs. May & Ken-Hsi Wang
 Dr. & Mrs. Thomas White
 Patricia Wilson & Michael Jones
 Mary Lynn Woodward

KWBU MEMBER SUPPORTERS AT THE \$1000 LEVEL OR ABOVE

For more information about the President's Circle, contact Ashley Kortis at 254.710.7886 or ashley@kwbu.org.

Bruce Allen
 Drs. Wendy & Dwight Allman
 Polly Anderson
 Dr. & Mrs. Michael Attas
 Pat & Raymond Bailey
 Drs. Robert & Sara Stone Barkley
 Jerry & Carol Barrett
 Claudia & Ron Beal
 Dr. Robin Bennett
 Jennifer Black
 Dr. Glenn Blalock & Dr. Laine Scales
 Wayne & Dee Blinka
 Linda & Rick Bostwick
 Trace Bowen
 Dr. Anne M. Bowery
 Diana & Bob Braswell
 Mr. Bruce D. Berg & Ms. Joan Brickley
 Rosalind Brinkley
 Nancy Callan
 Mr. & Mrs. Jeff Castleberry
 Carol Crosthwait
 Richard Crowder
 Prof. Robert & Dr. Mary Darden
 Denise & Scott Davis
 Lynne & Roger Davis
 Christopher Diamond
 DuPuy Oxygen
 Bruce & Dorothy Dyer
 Bonnie & Win Emmons
 Dr. Richard & Mrs. Lottie Evans
 First Presbyterian Church of Waco
 Liz Flynn
 Mr. & Mrs. Holt Getterman
 Dr. & Mrs. Hulitt Gloer
 Felicia & Sommers Goodman
 Dick & Jan Graves
 Robert Grayson
 Marsha & Heyward Green
 Trish Griffin - Realtor

Dr. & Mrs. Douglas Guthrie
 Nashim and H. Bruce Hamilton, MD
 Dr. Helen Short & Dr. Jeffrey Hamilton
 Laura Hernandez
 Dr. & Mrs. Stanley Hersh
 Tom & Carla Hervey
 Walter & Nan Holmes
 Alan Horwitz
 Hillcrest Hospitalists
 Anna Kay Hollon-Harris
 Carla & Barry Hopper
 Martha & Don Howe
 Vicky & Russ Hunt
 Kerry & Loeen Irons
 Susan Johnsen & David Young
 Dr. & Mrs. Benjamin Kelley
 Dr. Homer Kern & Dr. Barbara Selke-Kern
 Dr. & Mrs. David Kopplin
 Rayna Kraman
 Benjamin & Noell Lacy
 Karla Leeper
 John & Gerrie Lilley
 Kent & Isabel Lind
 Joani Livingston
 Katherine Logue & Jack Hill
 Dr. David Longfellow & Dr. Nancy Chinn
 Jane & Frank Mathis
 Bill Matthews
 Blake & Shanna Mattson
 Rebecca & Bradley Maxwell
 Maggie McCarthy
 Dr. Sean McCarthy
 Jim & Ramona McKeown
 John Daniel Mitchell
 Remo (Dusty) & Connie Moroni
 Jan Nimmo
 Melanie & Jim Nogalski
 Mr. & Mrs. Charles Olson
 Dr. Viola Osborn

David Patrick
 Joe & Margot Paul
 Dr. & Mrs. Rafael J. Perez
 Francis Pomponio
 Ruth & Dennis Prescott
 Dr. Stephen Prickett & Patsy Erskine-Hill
 Dr. & Mrs. Pat Pryor
 Mike & Beth Raymond
 Reed's Flowers
 Phil & Betsy Reeder
 Jennifer & Steve Rich
 Dr. & Mrs. Rodney Richie
 Dalila Richter
 Mary Agnes & Bruce W. Roberts
 Rosetree Floral Design Studio
 Drs. David & Jeanne Ryden
 Adrian & Carol Schmidhauser
 Robert & Janette Scott
 Mary Louise Sigthenhorst
 Gwen & Odis Skinner
 Doreen Stein
 Dr. Tom & Vivian Stidvent
 Mr. & Mrs. Ted Talbot
 Phyllis & Allan Tincher
 Samuel Torres
 Ryan & Holly Trauth
 Richard Wacker
 Waco Christmas Celebration/Columbus Avenue
 Baptist Church
 Mr. & Mrs. Joseph Wade
 Jo & Tim Welter
 Mr. & Mrs. Ralph Wood
 World Hunger Relief, Inc.
 Michael Yearty & Cynthia Jackson

KWBU MEMBER SUPPORTERS AT THE \$500 LEVEL OR ABOVE

For more information about the Cornerstone Society, contact Ashley Kortis at 254.710.7886 or ashley@kwbu.org.



YES, I want to become a member of KWBU!

NAME

ADDRESS

CITY

STATE

ZIP

()

PHONE (area code)

EMAIL

I would like to join:



Membership Level:

 \$40 \$60 \$120 (\$10/month) \$250

Cornerstone Society:

 \$500 or above \$ _____

President's Circle:

 \$1000 or above \$ _____

Other:

 \$ _____

Check enclosed

Charge my:

 Visa Mastercard American Express Discover

CARD #

NAME ON CARD

EXP. DATE



Donate your vehicle to

kwbu

- Free pick-up
- Tax receipt given

Easy and Convenient!

Call Today Toll Free:

1-877-KWBU-TEX

(1-877-592-8839)

January 2009

kwbu

Brazos Valley Public
Broadcasting Foundation

One Bear Place #97296
Waco, Texas 76798-7296

ADDRESS SERVICE REQUESTED

Non-Profit
Organization
U.S. Postage
PAID
Permit No. 234
Waco, TX