

# Getting Started with SciFinder Scholar™ 2007

*for Mac OS X*

---

June 2007

**Copyright © 2007 American Chemical Society. All Rights Reserved.**  
SciFinder and the SciFinder logo are trademarks or registered trademarks of the  
American Chemical Society. Mac OS X is a trademark of Apple, Inc.,  
registered in the U.S. and other countries.



---

# Getting Started with SciFinder Scholar™ 2007 for Mac OS X

Welcome to SciFinder Scholar 2007 for Mac OS X! This guide provides information you need to start using SciFinder Scholar, a desktop research tool used to locate and process information on a wide variety of chemical and chemical science-related topics.

<b>Topic:</b>	<b>See page(s):</b>
SciFinder Scholar Features	4
SciFinder Scholar Content	5-6
SciFinder Substructure Module	7
Hardware and Software Requirements	8
Starting SciFinder Scholar	9
Explore	10
Locate	11
Browse	12
SciFinder Scholar Help and Resources	13

---

## SciFinder Scholar Features

Enhancements for SciFinder Scholar 2007 for Mac OS X include:

- Combine two answer sets of the same kind: reference, substance, or reaction
- Access journal titles
  - View full journal titles in Analyze by Journal Name histograms
  - Include abbreviated and full journal titles in Tagged and Quoted Save As formats
- Explore or Refine from a substance display by inserting a copied structure directly into the Structure Drawing window
- Export commercial source information to Microsoft Excel®
- Print substance records in grid format

SciFinder Scholar also features:

- Exploring by Chemical Substance (including substructures, with SSM), Reaction Structure, Research Topic, Author Name, Company Name or Organization, and more
- Sorting, analyzing, and refining answer sets
- Citation searching and linking
- Linking from substance answer sets to detailed records, references, commercial sources, regulatory information, and reactions
- Saving and printing results
- Accessing full-text documents via the ChemPort® Connection<sup>SM</sup>
- Browsing tables of contents of scientific journals
- Linking to Internet resources

---

## SciFinder Scholar Content

SciFinder Scholar retrieves information contained in databases produced by Chemical Abstracts Service (CAS) as well as the MEDLINE database from the National Library of Medicine. All records are in English.

The **CAplus**<sup>SM</sup> database includes more than 27 million document records from nearly 9,500 journals and 150 countries from the late 19th century to the present. Document sources include journals, patents, conference proceedings, research disclosures, books, dissertations, technical reports, and more. The more than 5 million patent records are from over 50 active patent-issuing authorities. CAplus covers a broad spectrum of scientific and technical information from chemistry, biology, physics, engineering, and related sciences.

The **MEDLINE** database, which also includes OLDMEDLINE, covers biomedical literature from more than 4,780 journals and 70 countries. The database includes more than 16 million biomedical document records from 1950 to the present. MEDLINE also includes IN-PROCESS records, which have not been completely indexed, covering the most current documents in MEDLINE.

The **CAS REGISTRY**<sup>SM</sup> database provides you with access to more than 31 million searchable structures along with over 58 million biosequences. For these records, you may access structure diagrams, names, molecular formulas, properties, and more.

The **CASREACT**<sup>®</sup> database provides access to more than 13 million single and multistep organic reactions from 1840 to the present. SciFinder Scholar displays reactions including the reactants, reagents, products, catalysts, solvents, reaction conditions, and reference information.

For more than 13 million substances, you may obtain chemical source information from the **CHEMCATS**<sup>®</sup> database. Chemical source information, including supplier addresses, is derived from more than 900 chemical catalogs and libraries. Regulatory information for more than 245,000 substances from 1979 to the present is available from the **CHEMLIST**<sup>®</sup> database, including substance identity information, inventory status, sources of information, and compliance information.

For more information about the databases and their content, visit [www.cas.org](http://www.cas.org).

---

The information you can find in SciFinder Scholar includes:

- **Document Information**

- Title
- Author/inventor
- Company name/corporate source/patent assignee
- Publication year
- Source, publication, date, publisher, volume, issue, pagination, CODEN, ISSN
- Patent identification, including patent, application, priority, and patent family information
- Abstract
- Indexing
- Supplementary terms
- Citations
- Substances and reactions discussed within the document

- **Substance Information**

- Chemical names
- CAS Registry Numbers®
- Molecular formulas
- Structure diagrams
- Sequence information, including GenBank® and patent annotations
- Property data
- Commercial source information from chemical substance supplier catalogs
- Regulatory information
- Editor notes
- Documents in which the substance is referenced
- Reactions in which the substance participates
- A list of other publicly available databases from the STN online service, where additional information related to the substance may be located

- **Reaction Information**

- Reaction diagrams, including reactants, reagents, products, catalysts, solvents, and conditions
- Documents in which the reaction is referenced
- Additional reactions, references, substance details, commercial sources, and regulatory information for all reaction participants
- View experimental conditions (e.g., time, temperature, pressure, pH), when reported, for reactions from 2003 to the present
- See mixture ratios associated with product yields
- View all isomers in a reaction

## SciFinder Substructure Module

You have the option to purchase the SciFinder Substructure Module (SSM). The module allows you to:

- Search your query as a substructure of a more complex structure
- Conduct a similarity search
- Draw variables and R-groups, i.e., lists of atoms, shortcuts, and/or variables
- Prohibit substitution and ring fusion at particular nodes and bonds
- Preview results to estimate the number of answers and view sample answers
- Draw stereo bonds and automatically analyze answers in terms of the specified stereo features
- Analyze your answers by precision as part of your initial search
- Analyze answers by real-atom attachments, variable group composition, and R-group composition
- Refine structure answer sets by property data

---

## Hardware and Software Requirements

**Computer:** An Apple® Macintosh® with an Intel x86 or Power PC G4 or G5 processor

**Operating System:** Mac OS X 10.3 or 10.4

**Available Hard Disk Space:** 65 MB

**Connection:** TCP/IP connection to CAS via the Internet, and Z39.50 application level connection to CAS through port 210

Accessing full text via ChemPort® and online Help files on the CAS server requires an HTTP application level connection via Port 80.

**Monitor:** Color monitor capable of displaying 256 colors with 1024X768 screen resolution

**Printer:** High-quality graphics printer, e.g., laser or inkjet

### Additional Software

**Web Browser:** Safari® (OS X default) or a Mac OS X compatible version of Netscape®, Mozilla Firefox™, or Microsoft® Internet Explorer (MSIE)

A web browser is needed to access full text, online Help, and other Internet resources within the Tools menu.

- Java™ and Javascript™ must be enabled.
- Cookies must be accepted for some features in ChemPort.

**PDF Reader:** Preview (OS X default) or **Adobe® Reader®**, version 5.0 or higher

A PDF Reader is needed to display PDF documents available via the CAS web site and ChemPort.

**Microsoft® Excel®:** Excel 2004 (Mac OS X compatible version)

Excel is needed for the Export CHEMCATS® data to Microsoft® Excel® feature.



## Starting SciFinder Scholar

The Site Administrator for your organization has access to installation information. Please work with your Site Administrator to install SciFinder Scholar 2007 for Mac OS X. Once it is installed properly, you can log on and begin searching.

To start SciFinder Scholar:

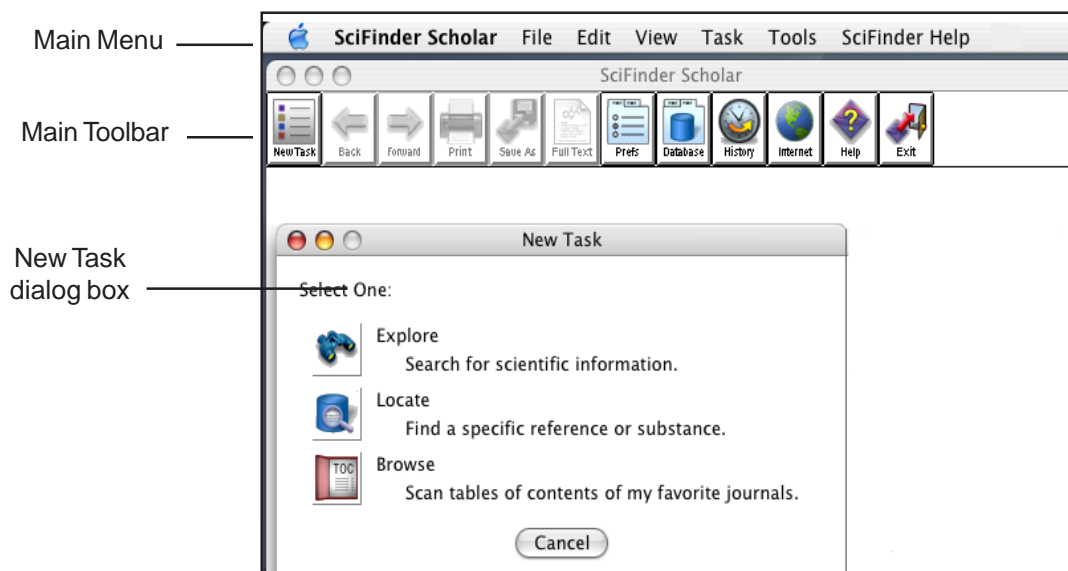
1. Double-click the SciFinder Scholar icon created during installation or on the Desktop or Dock alias if you have created one.

The SciFinder Scholar splash screen displays, followed by the License Agreement.

2. If you agree to the terms, click **Accept**.

A "Message of the Day" window opens. Click **OK** to proceed. You are now ready to begin searching.

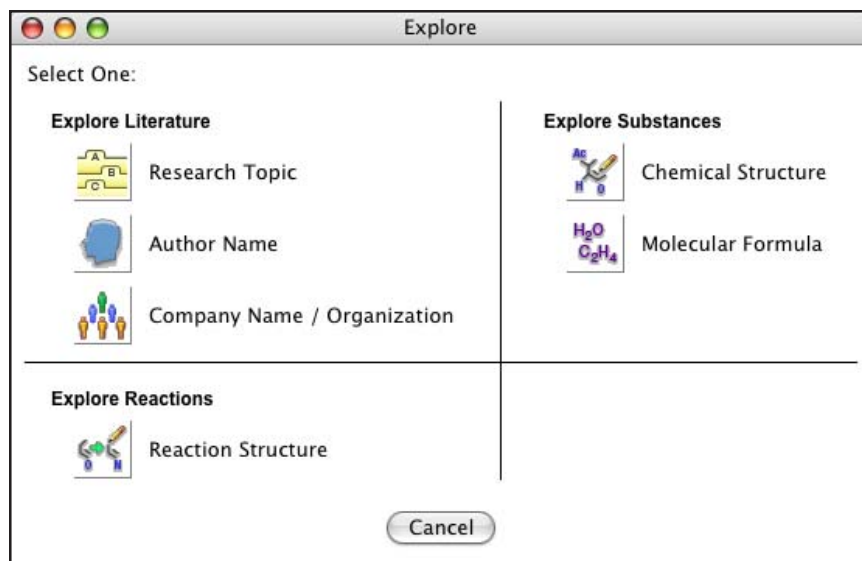
The main SciFinder Scholar window displays. It contains the Main Menu, Main Toolbar, and New Task dialog box.



3. Select one of the options from the New Task dialog box.

## Explore

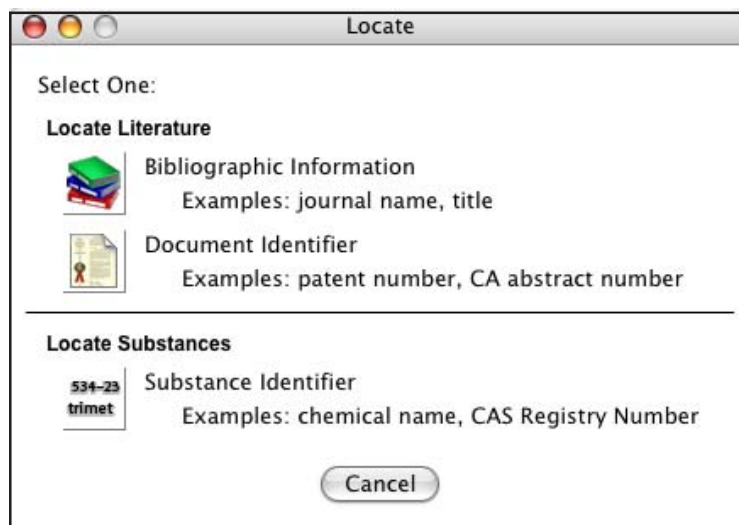
Explore allows you to look for scientific information in the CAS databases as well as the MEDLINE database.



Click the icon for the task you want to perform. SciFinder Scholar prompts you for the appropriate information to conduct your search. For details about the Explore features, see the SciFinder Scholar online Help.

## Locate

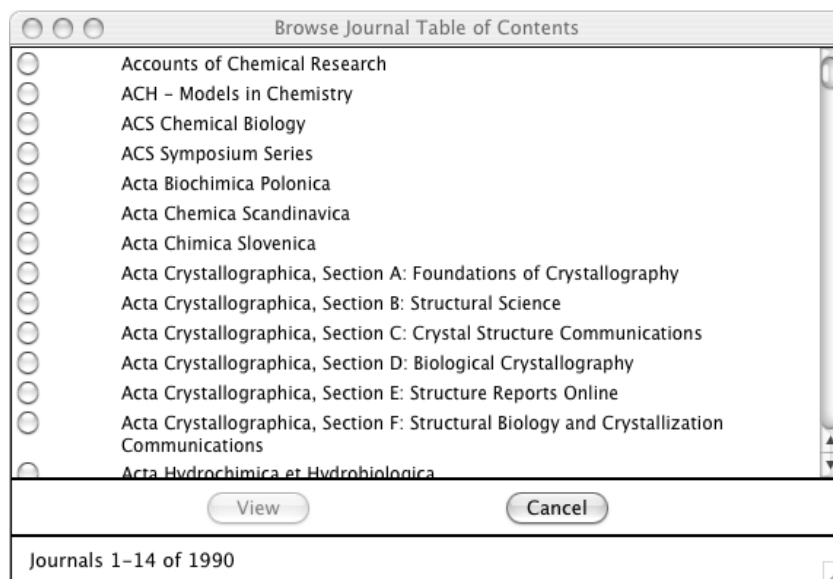
Locate allows you to quickly find a specific reference based on one or more pieces of bibliographic information or a document identifier. It also lets you search for specific substances by using a name or CAS Registry Number.



Click the icon for the task you want to perform. SciFinder Scholar prompts you for the appropriate information to conduct your search. For details about the Locate features, see the SciFinder Scholar online Help.

## Browse

Browse allows you to scan a list of nearly 2,000 key scientific journals covered by the CAS databases. You can view the tables of contents and link to full-text options for selected journals.



To view a table of contents, select a journal. Then click **View**. For details about the Browse feature, see the SciFinder Scholar online Help.

## SciFinder Scholar Help and Resources

### SciFinder Scholar Online Help

Comprehensive Help files that include search tips, troubleshooting information, and links to “how to” examples are provided within SciFinder Scholar.

To access the Help files, click the **Help** button located on the Main Toolbar. Or, select **SciFinder Help** from the **SciFinder Help** menu.

### SciFinder Scholar Web Sites

For more information about SciFinder Scholar, visit [www.cas.org](http://www.cas.org). SciFinder Scholar resources provide easy-to-follow examples and tips to help make your exploration with SciFinder Scholar more productive.

To quickly access SciFinder Scholar resources, click the **Internet** button on the Main Toolbar or select an Internet option from the **Tools** menu. Select the resource of interest and click **OK**.

### Additional Support

For questions, technical assistance, or suggestions concerning SciFinder Scholar, please contact your Site Administrator.

