

Name: \_\_\_\_\_ Date: \_\_\_\_\_

**Bachelor of Science in Education - Health Science Studies - Science Education**

*A Suggested Sequence of Required Courses (2016-2017 Catalog)*

**Freshman Year**

Fall	Spring
____ 3 BIO 1305 <i>Modern Concepts of Bioscience</i>	____ 3 BIO 1306 <i>Modern Concepts of Bioscience</i>
____ 1 BIO 1105 <i>Modern Concepts of Bioscience I Lab</i>	____ 1 BIO 1106 <i>Modern Concepts of Bioscience II Lab</i>
____ 0 CHA 1088 <i>Chapel (And UNV 1000)</i>	____ 0 CHA 1088 <i>Chapel</i>
____ 3 ENG 1302 <i>Thinking and Writing</i>	____ 3 ENG 1304 <i>Thinking, Writing and Research</i>
____ 3 HED 1350 <i>Dimensions of Health Science Studies</i>	____ 3 History (any 3-hour HIS prefix)
____ 3 MTH 1320 <i>Pre-calculus</i> OR MTH 1321 <i>Calculus I</i>	____ 1 HP 2102 <i>Fitness Concepts and Testing</i> Or LF 1134 <i>Fitness Theory and Practice</i>
____ 3 REL 1310 <i>The Christian Scriptures</i>	____ 3 MTH 1322 <i>Calculus II</i> OR Statistics
	____ 3 REL 1350 <i>The Christian Heritage</i>
Total: 16	Total: 17

**Sophomore Year**

Fall	Spring
____ 3 CHE 1301 <i>Basic Prin. Of Modern Chemistry I</i>	____ 3 CHE 1302 <i>Basic Prin. Of Modern Chemistry II</i>
____ 1 CHE 1101 <i>General Chemistry Lab I</i>	____ 1 CHE 1102 <i>General Chemistry Lab II</i>
____ 3 CSS 1301 or 1302 <i>Public Communication</i>	____ 1 HED 1145 <i>Health and Human Behavior</i>
____ 3 ENG 2301, 2304 or 2306 <i>Literature</i>	____ 3 HP 2306 <i>Kinesiology ("C" in HP 1420 required)</i>
____ 2-3 Fine Arts (art, music or theater arts)	____ 4 HP 2420 <i>Exercise Physiology ("C" in HP 1420 required)</i>
____ 4 HP 1420 <i>Human Anatomy (pre-req for HP 2306 &amp; 2420)</i>	____ 3 TED 2340 <i>Teaching in Secondary Schools</i>
____ 1 LF 11__	
Total: 17-18	Total: 15

**Junior Year**

Fall	Spring
____ 4 PHY 1408 <i>Physics for Natural &amp; Behavioral Science I</i>	____ 3 HED Elective
____ 3 PSY 1305 or SOC 1305	____ 3 HED Elective
____ 3-4 Science Elective (upper level CHE, BIO, PHY)	____ 4 PHY 1409 <i>Physics for Natural &amp; Behavioral Science II</i>
____ 1 TED 1112 <i>Instructional Technology Lab</i>	____ 3 TED 3341 <i>Teaching Associate Secondary Part II</i>
____ 3 TED 3340 <i>Teaching Associate Secondary Part 1</i>	____ 3 TED 3388 <i>Secondary Science Practicum II</i>
____ 3 TED 3387 <i>Secondary Science Practicum I</i>	____ 1 TED 2112 <i>Instructional Technology Lab II</i>
Total: 17-18	Total: 17

**Senior Year**

Fall	Spring
____ 3 BIO 2306 <i>Genetics</i>	____ 3 TED 4325 <i>Teaching Science in Secondary School</i>
____ 0 BIO 4001 <i>Achievement Test</i>	____ 6 TED 4640 <i>Internship Secondary</i>
____ 3-4 CHE upper level	____ 6 TED 4641 <i>Internship Secondary</i>
____ 1 LF 11__	
____ 3 PSC 2302 <i>American Constitutional Devp't</i>	
____ 3-4 Science Elective (upper level CHE, BIO, PHY)	
Total: 13-15	Total: 15

**Total Credit Hours = 127 - 131**

*\* All students must graduate with a minimum of 124 hours, 36 of which must be at the 3000/4000 level.*

**Students MUST maintain a 2.75 cumulative GPA and 2.75 in the major to continue in HSS/Science Education.**

**Before a student is able to begin the Teaching Associate coursework (TED 3340/3341), the student must have 15 hours of science courses complete.**

**Please see reverse side for important information on general requirements.**

## Health Science Studies - Science Education

Please check Undergraduate Catalog for pre-requisite information (BIO, CHE, ENG, HP)

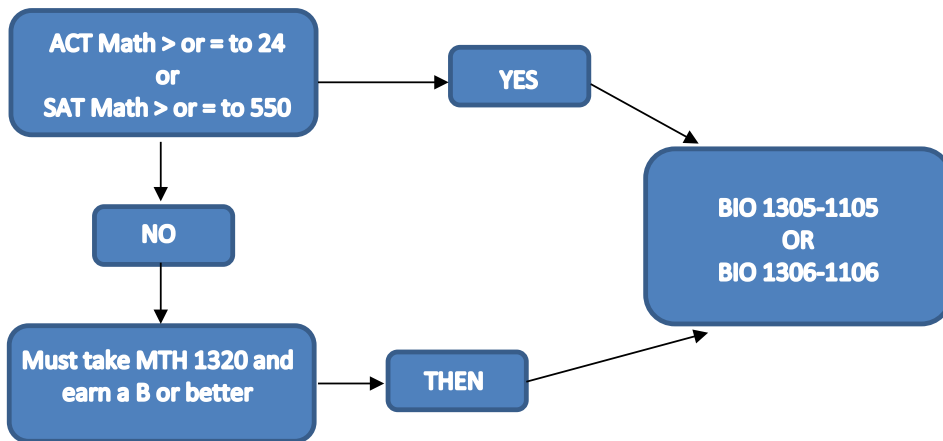
HED Electives must come from the following list of courses:

- HED 2313 *Consumer Health*
- HED 3313 *Nutrition*
- HED 3317 *Mood and Modifying Substances*
- HED 3320 *Stress Management*
- HED 3351 *Epidemiology/Vital Statistics* (Pre-requisite HED 2330)
- HED 4321 *Human Sexuality*
- HED 4327 *Dying and Death Education*
- HED 4331 *Intervention*

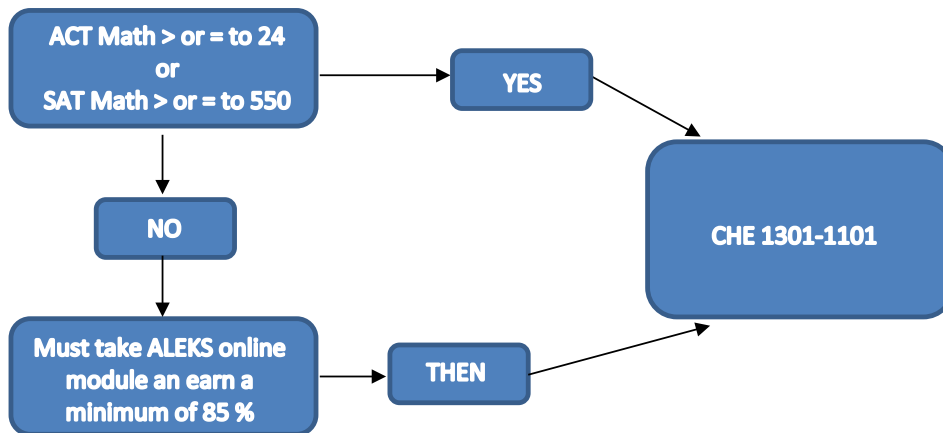
Recommended courses for students who need extra hours to complete the degree requirements.

- EDP 3324 *Learning and Development*
- EDP 3326 *The Developing Child*
- EDP 3327 *Assesment Theory and Exceptionality*
- TED 3367 *Assessment of Students with Mild Disabilities*
- TED 4350 *Exceptionalities*
- TED 4351 *Differentiated Instruction*

Requirements for starting BIO 1305-1105 or 1306-1106 sequence:



Requirements for starting CHE 1301-1101 and 1302-1102 sequence:



If a student has at least a 650 SAT Math or a 31 ACT Math score they can go directly into MTH 1321, BIO and CHE.