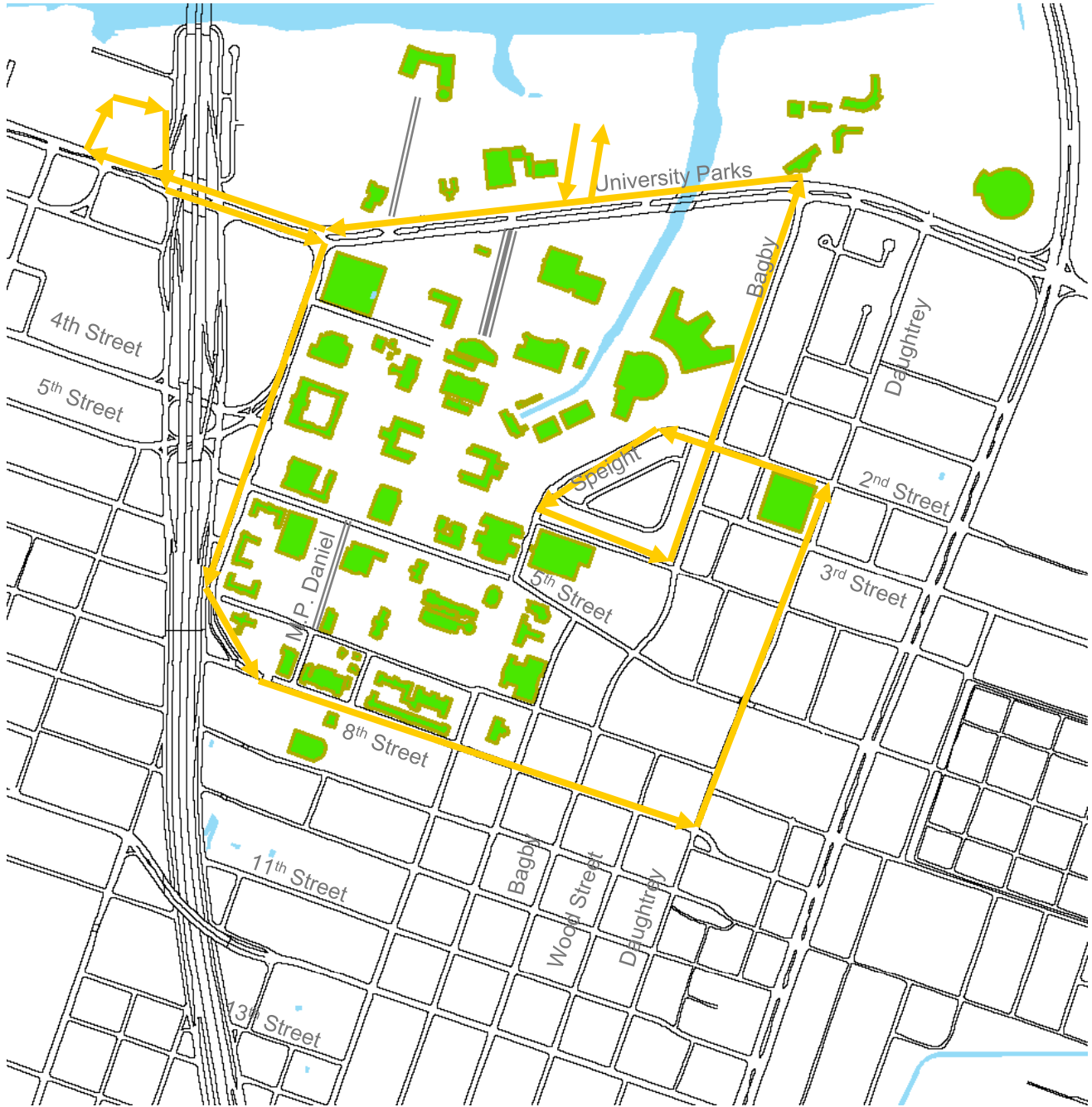


# Gold Route





Fall 2008-Spring 2009

**GOLD ROUTE**

Distance - 4.1 Miles

Gold				
Robinson Tower	30	45	0	15
Dutton Garage	32	47	2	17
5th & Dutton	33	48	3	18
8th St Garage	35	50	5	20
East Campus Garage	37	52	7	22
Speight St Stop	39	54	9	24
University Parks & Bagby	41	56	11	26
University Parks & Dutton	43	58	13	28

Driving Directions			
Start	Robinson Tower	Left	4th St
Right	I-35 Service Rd	Left	Bagby
Left	University Parks	Left	University Parks
Right	Dutton	Stop	Robinson Tower
Left	8th St		
Left	Daughtrey		
Left	2nd St/Speight St		