



BAYLOR  
UNIVERSITY

PARENTS LEAGUE

A large crowd of people is running a marathon on a paved path. The path is lined with white plastic water jugs. In the background, the Four Chimneys building is visible, surrounded by trees. The scene is captured in a high-contrast, almost black and white style with some color highlights.

# 2012-2013 CALENDAR

just for parents

# WELCOME



**Parents League  
serves as your  
personal link to Baylor.  
We are committed to  
establishing frequent  
communication and  
meaningful relationships  
with our Baylor parents.**

Dear Parents,

Welcome to a brand new academic year and an exciting time in your student's life and in the history of Baylor University. As we continue celebrating a memorable year of great successes across Baylor, we are also collectively looking to the future and inspired by how our presence on this campus today will impact the generations of students who will one day join *That Good Old Baylor Line*.

Whether your student is a returning Bear or new to the Baylor Family, we welcome each of them, and you, to another great season here on our storied campus. This season represents a unique time in the life of a parent. Throughout the college years, you have the opportunity to watch your student change and grow. Your support and encouragement can be important tools in this transformative process as students develop within Baylor's caring, Christian environment. Our institution stands boldly at the intersection of faith and learning, pursuing academic excellence within a community that extends beyond our vibrant campus to cities all over the U.S. to reach you, our Baylor parents.

The **Baylor Parents League** serves as your personal link to Baylor. We are committed to establishing frequent communication and meaningful relationships with our Baylor parents. Our local Parents League chapters create opportunities for friendship, encouragement and support with other parents in the Baylor community. Additionally, Baylor Parents League publishes *Perspectives*, an e-newsletter that keeps you informed about campus developments and University news. For more information, please see the "Get Connected" info below, visit [www.baylor.edu/parentsleague](http://www.baylor.edu/parentsleague), e-mail us at [parentsleague@baylor.edu](mailto:parentsleague@baylor.edu) or call our toll-free Parents Helpline, **1-888-287-5557**.

We wish you and your student a happy and successful year. Please reference this 2012-2013 Parents Calendar as a helpful resource. In it, you will find relevant dates, highlighted for your convenience, along with examples of the challenges and opportunities your student may face during the months ahead. For an updated calendar of events throughout the year, visit [www.baylor.edu/calendar](http://www.baylor.edu/calendar).

As always, the Baylor Parents League is here for you. Please do not hesitate to contact us if we can be of any assistance at any time.

A handwritten signature in black ink that reads 'Judy Maggard'.

**Judy Maggard**  
Director, Parent Programs  
Baylor Parents League  
1-888-287-5557  
[Judy\\_Maggard@baylor.edu](mailto:Judy_Maggard@baylor.edu)

# GET CONNECTED!

As a Baylor parent, you are automatically a member of the Parents League—no fees or dues required. Read on to learn about the different ways you can participate in the Parents League and make valuable connections with other Baylor parents in your community.

**PRAYER.** Praying for our students is certainly one of the most important ways we can support them. 1st Call to Prayer is an opportunity to meet other Baylor parents and encourage one another while covering our Baylor students, faculty and administration in prayer. 1st Call is hosted by local Parents League chapters and meets monthly. All parents are welcome to submit prayer requests or praises online. Just visit the Parents League website and find the “1st Call to Prayer” tab.

**SUPPORT NETWORKS.** Parents League chapters—in more than 30 cities and areas throughout the United States—serve as a hometown connection to Baylor University. We encourage our chapters to partner with other local Baylor groups including The Baylor Alumni Network and Baylor Bear Foundation to plan and host hometown Baylor events.

Baylor Parents League chapter events and activities may include:

- Summer send-off parties for Baylor students and their parents;
- Bear Care packaging parties;
- 1st Call to Prayer; and/or
- Tailgate parties for athletic events.

*If you desire to become more involved in your local Baylor Parents League chapter or if your community does not have a chapter and you would like to begin one, please contact us at [parentsleague@baylor.edu](mailto:parentsleague@baylor.edu) or 1-888-287-5557.*

**COMMUNICATION.** *Perspectives*, our Parents League e-newsletter, is a publication just for Baylor parents. We report the latest news, provide helpful tips and share inspiring stories from campus (and beyond!). All parents of undergraduate students (for whom we have a valid e-mail address) automatically receive the newsletter via e-mail. You can read *Perspectives* online or browse past issues by visiting the Parents League website and clicking on the *Perspectives* e-newsletter tab.

## **PARENTS FUND (Four Funds. Endless Impact.)**

As a parent, you impact your student's life every day. And through the Parents Fund, parents like you make a difference in the lives of hundreds of students each year. With four different funds, you can support the areas that mean the most to you and meet a variety of vital needs. From financial assistance for tuition or family emergencies to provisions for expanded learning opportunities, it's all supplied through the generosity of Baylor parents.

Visit [www.baylor.edu/parentsfund](http://www.baylor.edu/parentsfund) for details.



### CHALLENGES

#### **Making a New Home**

Now is a prime time to get involved and make friends. Parents should encourage their student to stay on campus and join a club or organization as a way to develop new relationships.

#### **Getting off on the Right Foot**

The first few weeks of classes set the tone for the rest of the semester, and students who take advantage of their professors' office hours will benefit. By stopping in and introducing themselves, they can create a personal relationship with their professor so they have a resource when help is needed.

### OPPORTUNITIES

#### **Welcome Week**

Kicking the Baylor experience off with a bang, Welcome Week hosts a variety of events for new students to help acclimate them into the Baylor family. Welcome Week eases the transition from home to college and bonds students together, creating lasting friendships.

#### **Late Night at the SLC**

A tradition since 2001, Late Night at the SLC gives students the opportunity to find people with common interests. Along with exhilarating music, fun activities and free food, students can learn more about various organizations, clubs and opportunities to be involved on campus.



**BAYLOR PARENTS LEAGUE IS  
YOUR BAYLOR CONNECTION!**

**parentsleague@baylor.edu • 1-888-287-5557  
[www.baylor.edu/parentsleague](http://www.baylor.edu/parentsleague)**



## HIGHLIGHTS

### ACADEMICS

- 8** Summer II classes end
- 11** Summer Commencement
- 20** Fall class session begins
- 20-24** BearWeb opens for registration and schedule changes (100% refund)
- 20** Spiritual Life Welcome Dinner
- 27** Last day for seniors to file for December graduation
- 28** Last day to register or add a class (75% refund)
- 31** Fall monthly bill due

### STUDENT LIFE

- 15** Student Move-In (for all Living-Learning programs)
- 16** Student Move-In
- 16-19** Welcome Week
- 24** Late Night at the SLC
- 31** Traditions Rally

### ATHLETICS

- 24-25** Volleyball: Fairfield Inn North Baylor Classic Tournament

SUN

MON

TUES

WED

THU

FRI

SAT

**BREAKING RECORDS** Another Baylor record was broken when more than 40,000 admissions applications were filed for the class of 2016. That's an increase of 15,000 since 2008!

1

2

3

4

5

6

7

8

9

10

11

12

13

14

15

16

17

18

19

20

21

22

23

24

25

26

27

28

29

30

31

1

### CHALLENGES

#### Roommates

Roommates can be tricky. Some students are paired with those who complement them perfectly, while others have roommates who are polar opposites. As the new year begins, students might need to have a conversation discussing their expectations for the coming semester. This helps eliminate conflict before it becomes an issue.

#### Letting Go

Just as the student may have trouble adjusting to college life, parents have to adjust as well. To be understanding of a student's busy schedule, parents can consider setting up a weekly phone call or Skype visit as a way to stay connected.

### OPPORTUNITIES

#### Freshman Retreat

Hosted by Spiritual Life, the Freshman Retreat helps students understand their spiritual identity formation and development as they adjust to college life. This weekend gives students a chance to connect with the Spiritual Life staff and dive deeper into their faith.

#### Career Services

Open Monday through Friday, Career Services is a resource for students' futures. Not only can this office give students valuable information about potential career paths, but it also outlines the steps they need to take to achieve their dreams.



**BAYLOR PARENTS LEAGUE IS  
YOUR BAYLOR CONNECTION!**

**parentsleague@baylor.edu • 1-888-287-5557**  
**[www.baylor.edu/parentsleague](http://www.baylor.edu/parentsleague)**

# SEPTEMBER | 2012



## HIGHLIGHTS

### ACADEMICS

- 3** Labor Day Holiday (no classes)
- 17** Last day to drop without a grade being assigned (25% refund)
- 22** Fall Premiere
- 30** Fall monthly bill due

### STUDENT LIFE

- 7-8** Freshman Retreat
- 14** All-University Howdy
- 18-21** Be the Change Mission Conference
- 26** Freshman Follies

### ATHLETICS

- 2** Baylor Football hosts SMU
- 15** Baylor Football hosts Sam Houston
- 21** Baylor Football at Louisiana-Monroe
- 29** Baylor Football at West Virginia

SUN

MON

TUES

WED

THU

FRI

SAT

**QUINTS BY SURPRISE** The popular TLC show *Quints by Surprise* visited Baylor last fall to film the quint's very first football game. The father of the crew, Ethan Jones, earned an MBA from Baylor in 2011.

29

30

31

1

2

3

4

5

6

7

8

LABOR DAY  
HOLIDAY

9

10

11

12

13

14

15

16

17

18

19

20

21

22

23/30

24

25

26

27

28

29



### CHALLENGES

#### Preparing for Midterms

The leaves are falling and students are spending hours studying for exams. Midterm season is here. October is often the make-or-break month for a student's final grade. Encourage your student to stay focused as this round of important exams approaches.

#### Advisors as Translators

Degree audits, CRNs and academic holds? Let's face it: registration lingo can sound like a different language. However, students need not fear because academic advisors are available to guide them every step of the way. Students should schedule an appointment to make sure they are on the right path to graduation.

### OPPORTUNITIES

#### Parent & Family Weekend

It's finally here! Baylor welcomes families to reconnect with students and the Baylor campus. Families can use this weekend to better understand student life by meeting with professors, exploring the Baylor campus and cheering on the Baylor Bears football team. Learn more at:

[www.baylor.edu/parentandfamilyweekend](http://www.baylor.edu/parentandfamilyweekend)

#### Fall Break

Ahh...after several straight weeks of studying, this three-day weekend provides a nice relief for students. Some use this weekend to return home for a few days, while others choose to give back on short mission trips or relax with friends before returning to the busy fall semester.



**BAYLOR PARENTS LEAGUE IS  
YOUR BAYLOR CONNECTION!**

[parentsleague@baylor.edu](mailto:parentsleague@baylor.edu) • 1-888-287-5557  
[www.baylor.edu/parentsleague](http://www.baylor.edu/parentsleague)

# OCTOBER | 2012



## HIGHLIGHTS

### ACADEMICS

**19-21** Fall Break

**31** Fall monthly bill due

### STUDENT LIFE

**12-13** Parent & Family Weekend

**12** After Dark

**25-27** Fright Night

### ATHLETICS

**13** Baylor Football hosts TCU

**20** Baylor Football at Texas

**27** Baylor Football at Iowa State

SUN	MON	TUES	WED	THU	FRI	SAT
30	1	2	3	4	5	6
7	8	9	10	11	12	13
					PARENT & FAMILY WEEKEND	
14	15	16	17	18	19	20
					FALL BREAK	
21	22	23	24	25	26	27
28	29	30	31	<b>RAISING THE BAR</b> In July 2011, more than 95 percent of Baylor Law School students passed the Texas State Bar Exam, giving Baylor the highest pass rate in the state. Baylor has earned this honor 14 times since 2001.		



## CHALLENGES

### Staying Connected

With the busyness of classes, work and extra-curricular activities, parents may begin feeling less connected to their students.

Stay up-to-date on the latest Baylor events by following Baylor's social media sites, such as Facebook and Twitter.

[www.baylor.edu/socialmedia](http://www.baylor.edu/socialmedia)

### Retreating Refreshed

After four long months of school, many students are anxious to return home to celebrate the Thanksgiving break with their families. Parents need to talk to their students about travel plans to ensure he or she is well rested and ready for safe travels.

## OPPORTUNITIES

### Homecoming

Hailed as the oldest Homecoming in the nation, this weekend expresses Baylor spirit at its best. Hosting the largest collegiate Homecoming parade in the nation, Extravaganza, bonfire, Pigskin Review and the football game against the Kansas Jayhawks, this celebration draws together students from the past, present and future.

### Christmas on 5th Street

Cocoa and cookies, carriage rides and Christmas trees, camels and carolers: Christmas on 5th is not something to be missed! This time-honored Christmas celebration has become a favorite, giving students a much-needed break and allowing them to celebrate the season.

**BAYLOR PARENTS LEAGUE IS  
YOUR BAYLOR CONNECTION!**

**parentsleague@baylor.edu • 1-888-287-5557**  
**[www.baylor.edu/parentsleague](http://www.baylor.edu/parentsleague)**

# NOVEMBER | 2012



## HIGHLIGHTS

### ACADEMICS

- 19** Early Registration begins
- 21-25** Thanksgiving Holiday (no classes)
- 30** Fall monthly bill due

### STUDENT LIFE

- 1-3** Homecoming weekend
- 1-3** Pigskin Revue
  - 1** Freshman Mass Meeting
  - 2** Bonfire and Pep Rally
  - 3** Homecoming Parade
  - 4** Homecoming Worship Service
- 10** Steppin' Out
- 16** Bed Races and Chili Cook Off
- 29** Christmas on 5th Street
- 29** Christmas at Baylor Annual Concert

### ATHLETICS

- 3** Baylor Football hosts Kansas (Homecoming Game)
- 10** Baylor Football at Oklahoma
- 17** Baylor Football hosts Kansas State
- 24** Baylor Football vs. Texas Tech at Cowboys Stadium, Arlington, Texas

SUN

MON

TUES

WED

THU

FRI

SAT

**NOTABLE APPEARANCES** Last year, President Starr hosted former Secretary of State Condoleezza Rice, former Supreme Court Justice Sandra Day O'Connor and best-selling author and financier T. Boone Pickens for his candid "On Topic" conversations at Waco Hall.

31

1

2

3

HOMECOMING

4

5

6

7

8

9

10

11

12

13

14

15

16

17

18

19

20

21

22

23

24

THANKSGIVING HOLIDAY

25

26

27

28

29

30

1



### CHALLENGES

#### Finals Week

Known to many students as the hardest week of the year, finals can be a stressful time. Parents should encourage their student to make wise decisions during this week by studying hard, eating well and getting enough sleep, so he or she can finish the semester strong.

#### Coming Home

As the winter break begins, parents should recognize that their student may have changed. Accustomed to making their own decisions, students may feel a loss of freedom when returning home. Parents should anticipate this change and take the time to talk with their student about expectations over the winter break.

### OPPORTUNITIES

#### The Season of Giving

Surrounded by gifts and good food, we can sometimes forget the real meaning of Christmas. Take the time to volunteer as a family to help those in need. Not only will your family give back to the community, but parents also will gain valuable, quality time with their Baylor Bear.

#### Reevaluate for the Spring

Before students head back for the spring semester, parents might consider sitting down with their child to discuss the fall. By identifying what went well and what went poorly, students can adjust their schedules and priorities to help them prepare for the coming semester.



**BAYLOR PARENTS LEAGUE IS  
YOUR BAYLOR CONNECTION!**

[parentsleague@baylor.edu](mailto:parentsleague@baylor.edu) • 1-888-287-5557  
[www.baylor.edu/parentsleague](http://www.baylor.edu/parentsleague)

# DECEMBER | 2012



## HIGHLIGHTS

### ACADEMICS

- 3** Spring bills available
- 3** Last day of fall classes
- 4-5** Study Days
- 6-12** Final Exams
- 13-14** Administrative check for graduation
- 15** Commencement

### STUDENT LIFE

- 13** Residence Halls fall closing
- 15** Residence Halls close for graduating seniors

### ATHLETICS

- 1** Baylor Football hosts Oklahoma State

SUN	MON	TUES	WED	THU	FRI	SAT
<b>BAYLOR'S SUPERMAN</b> On December 10, 2011, Robert Griffin III made history as the first Baylor football player to receive the Heisman Trophy. He accepted the honor while sporting trend-setting Superman socks.			28	29	30	1
2	3	4	5	6	7	8
9	10	11	12	13	14	15
16	17	18	19	20	21	22
23/30	24/31	25	26	27	28	29

COMMENCEMENT

### CHALLENGES

#### Resolution Time

Make good grades. Get in shape. Eat Healthy. These are items that usually top students' New Year's resolutions. Baylor offers a wide range of services to help students meet these goals including the Success Center, Campus Recreation and Dining Services.

#### A Juggling Act

Classes and work until 5, dinner with friends at 6, a meeting at 7 and studying for a test at 8. As the new semester begins, students may feel overwhelmed as they juggle their various commitments. Parents should encourage their student to prioritize his or her time in the new year to be efficient in the everyday tasks and duties.

### OPPORTUNITIES

#### Study Abroad

¿A Donde Vas? Through Baylor's study abroad office, students have the option of studying in countries on six continents. These trips allow students to receive credit hours and interact with people of different cultures. Many of the spots on these trips fill up quickly, so students need to be proactive in their plans.

#### Going Greek

Starting in the spring, students have the option of participating in Greek recruitment. From multicultural groups to service-based organizations, there are many opportunities to get involved. While it is not for everyone, Greek organizations can offer outlets for friendship, service and leadership.



**BAYLOR PARENTS LEAGUE IS  
YOUR BAYLOR CONNECTION!**

**parentsleague@baylor.edu • 1-888-287-5557**  
**[www.baylor.edu/parentsleague](http://www.baylor.edu/parentsleague)**

# JANUARY | 2013



## HIGHLIGHTS

### ACADEMICS

- 14** Spring class session begins
- 14-18** BearWeb opens for registration and schedule changes (100% refund)
- 21** Martin Luther King, Jr., Holiday (no classes)
- 22** Last day for seniors to file for May graduation
- 23** Last day to register or add a class (75% refund)
- 31** Spring monthly bill due

### STUDENT LIFE

- 7** Residence Halls open for Panhellenic Recruitment Fall Parties
- 7-11** Panhellenic Recruitment Fall Parties
- 10** Residence Halls open for spring semester

### ATHLETICS

[www.baylorbears.com](http://www.baylorbears.com)

SUN	MON	TUES	WED	THU	FRI	SAT
30	31	1	2	3	4	5
6	7	8	9	10	11	12
13	14	15	16	17	18	19
20	21	22	23	24	25	26
	MLK, JR. HOLIDAY					
27	28	29	30	31		

### HIDDEN JEWEL

The Armstrong Browning Library has been ranked among the 50 most beautiful libraries in the world with its stained glass windows and marble columns.

### CHALLENGES

#### The Early Bird Catches the Worm

Although summer may seem far away, now is the time for students to start making their plans. Many job opportunities, including internships, often have early application deadlines. Parents can encourage their student to plan ahead, reducing stress and broadening opportunities for the summer.

#### V-Day

No matter if a student's Facebook status reads, "single," "in a relationship" or "it's complicated," Valentine's Day can add stress to a student's already busy life. By sending their students cards or other treats, parents can use this day to show love and support.

### OPPORTUNITIES

#### All-University Sing

A tradition for more than 60 years, All-University Sing remains one of the biggest events on campus. This six-night show involves hundreds of students performing song-and-dance routines to sold-out crowds. Tickets sell out quickly, so plan ahead and consider joining your student for this unique Baylor experience.

#### Bear Fever

Dominating in both the men's and women's NCAA tournament last year, Baylor basketball has caught the attention of the nation. Free tickets to every home game are available to students, allowing them to show their pride for the green and gold.



**BAYLOR PARENTS LEAGUE IS  
YOUR BAYLOR CONNECTION!**

**parentsleague@baylor.edu • 1-888-287-5557**  
**[www.baylor.edu/parentsleague](http://www.baylor.edu/parentsleague)**

# FEBRUARY | 2013



## HIGHLIGHTS

### ACADEMICS

- 11** Last day to drop without a grade being assigned (25% refund)
- 28** Spring monthly bill due

### STUDENT LIFE

- 6** Chinese New Year
- 14-16** All-University Sing
- 21-23** All-University Sing

### ATHLETICS

[www.baylorbears.com](http://www.baylorbears.com)

SUN

MON

TUES

WED

THU

FRI

SAT

**FINISHED BUSINESS** Securing the 2012 NCAA Women's National Championship, the Lady Bears finished their undefeated season at 40-0—a feat never before achieved by a women's or men's college basketball team.

30

31

1

2

3

4

5

6

7

8

9

10

11

12

13

14

15

16

ALL-UNIVERSITY SING

17

18

19

20

21

22

23

ALL-UNIVERSITY SING

24

25

26

27

28

1

2



### CHALLENGES

#### Decisions, Decisions

March is a time of decisions. Where do I live next year? What classes should I take? Who should be my roommates? Along with the added stress of midterms, students sometimes feel weighed down by their many options. Encourage your student to plan ahead and make smart choices when preparing for the fall.

#### Spring Break Safety

Whether students are serving on a mission trip, going to the beach or relaxing at home, Spring Break is often a much-needed break. Parents should communicate with their student in advance to ensure that safety and wise-decision making are a priority.

### OPPORTUNITIES

#### Take a Load Off

Once the stress of midterms has passed, parents can encourage their student to take some time to enjoy the outdoors. Activities like renting a kayak at the marina, running the Bear Trail and hiking Cameron Park allow students to fellowship with friends while enjoying the fresh Texas air.

#### Volunteering

From working with animals at the local shelter to tutoring elementary school kids, Waco offers many outlets for students to give back. Every spring, Baylor hosts Steppin' Out, a campus-wide day of service, as a way to serve the local community.



**BAYLOR PARENTS LEAGUE IS  
YOUR BAYLOR CONNECTION!**

**parentsleague@baylor.edu • 1-888-287-5557**  
**[www.baylor.edu/parentsleague](http://www.baylor.edu/parentsleague)**



## HIGHLIGHTS

### ACADEMICS

- 9-17** Spring Break (no classes)
- 29-31** Easter Holiday (no classes)
- 31** Spring monthly bill due

### STUDENT LIFE

- 23** Bearathon
- 23** Gateway to India

### ATHLETICS

- 8-11** Women's Basketball:  
Big 12 Championship
- 13-16** Men's Basketball:  
Big 12 Championship

SUN	MON	TUES	WED	THU	FRI	SAT
<b>NOT JUST A NUMBER</b> Since 2002, Baylor's student-faculty ratio has dropped from 18-to-1 to 14-to-1, and more than 90 percent of undergraduate classes have less than 50 students, allowing students to interact personally with professors.			27	28	1	2
3	4	5	6	7	8	9
10	11	12	13	14	15	16
	SPRING BREAK		SPRING BREAK		SPRING BREAK	
17	18	19	20	21	22	23
24/31	25	26	27	28	29	30
					EASTER HOLIDAY	

### CHALLENGES

#### Keeping Focused

Welcome to April, the time when some students can tire of classes and their desire to skip becomes more tempting. Parents should encourage students to press through and stay focused on their classes during the final stretch of the semester.

#### Making connections

As students prepare to enter the workforce, they need to focus on building connections that might help them in the future. By attending Career Services' career fairs, students can network with potential future employers and gain valuable practice in interviewing and resume building.

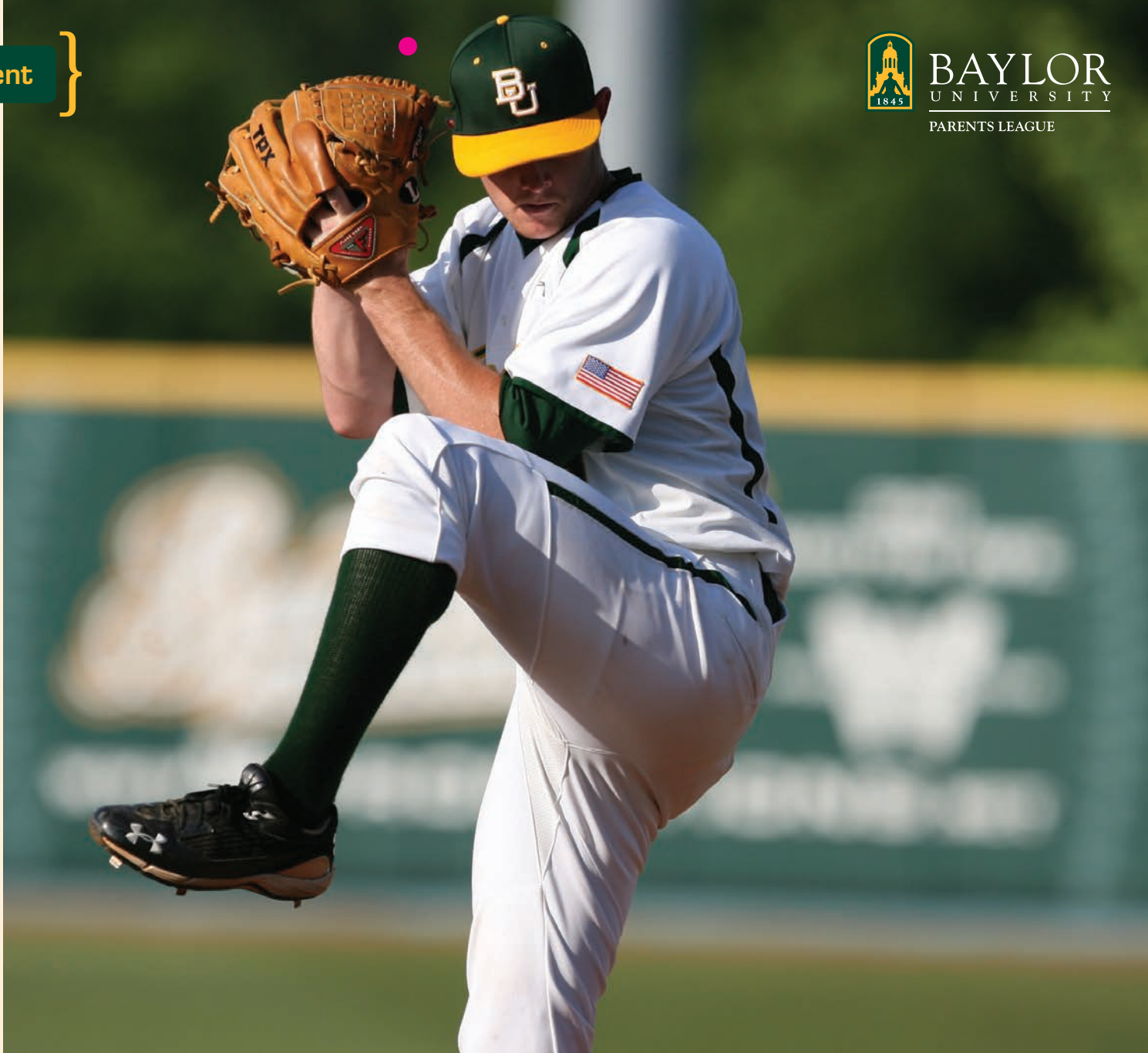
### OPPORTUNITIES

#### StompFest

One of Baylor's newest traditions, StompFest is an annual competition devoted to a type of dance involving a rhythmic, heavy step. Open to any Baylor organization, students compete to win money for the charity their organization supports. Past themes have included the childhood favorites of "Pokémon," "Teenage Mutant Ninja Turtles" and "Hey Arnold."

#### Diadeloso

Since 1934, students have described Diadeloso as the best day of spring. Complete with competitions, musical entertainment and plenty of tasty food, this celebration gives students a day to play and relax before they head to the libraries in preparation for finals.



**BAYLOR PARENTS LEAGUE IS  
YOUR BAYLOR CONNECTION!**

**parentsleague@baylor.edu • 1-888-287-5557**  
**[www.baylor.edu/parentsleague](http://www.baylor.edu/parentsleague)**



## HIGHLIGHTS

### ACADEMICS

- 1** Easter Holiday (no classes)
- 6** Spring Premiere
- 30** Spring monthly bill due

### STUDENT LIFE

- 5-6** StompFest
- 11** Fiesta!
- 12** Relay for Life
- 13** Steppin' Out
- 18** Diadeloso

### ATHLETICS

- 19-21** Women's Golf:  
Big 12 Championship
- 22-24** Men's Golf:  
Big 12 Championship
- 25-28** Men's and Women's Tennis:  
Big 12 Championship

SUN	MON	TUES	WED	THU	FRI	SAT
31	1	2	3	4	5	6
EASTER HOLIDAY						
7	8	9	10	11	12	13
14	15	16	17	18	19	20
21	22	23	24	25	26	27
28	29	30	1			

**SCHOLARSHIP SUPPORT** Every year, Baylor provides more than \$130 million in scholarships. This is more than triple the amount provided a decade ago. Learn how you can support scholarships at [www.baylor.edu/extraordinarystories](http://www.baylor.edu/extraordinarystories).

## Encourage Your Student

### CHALLENGES

#### **Saying Goodbye**

Finals are over, apartments are packed and now students must say goodbye. No matter if students are freshmen or seniors, parting ways is never easy. Parents can encourage their student to make the most out of the last few weeks before summer vacation begins.

#### **Accepting Change**

Change is inevitable, and students sometimes struggle as they have to face the future. On the flip side, parents face their own internal battles as they see their little boy or girl growing up. By embracing change, parents and students can bond to make this time a little bit easier.

### OPPORTUNITIES

#### **Giving Back to Baylor University**

As seniors hang up their Line jersey and prepare to don their cap and gown, they have the opportunity to give back to Baylor through their senior class gift. As their first act as a Baylor alum, their gift to the Class of 2013 Endowed Scholarship Fund helps make a difference in the lives of their fellow Baylor students. [www.baylor.edu/seniorclassgift](http://www.baylor.edu/seniorclassgift)

#### **Welcoming Future Bears**

Each summer, parents across the United States, along with the help of Baylor Parents League, host send-off parties to welcome new students and their families to Baylor. If you are interested in hosting a send-off party in your area, visit:

[www.baylor.edu/parentsleague](http://www.baylor.edu/parentsleague)



**BAYLOR**  
UNIVERSITY

PARENTS LEAGUE



**BAYLOR PARENTS LEAGUE IS  
YOUR BAYLOR CONNECTION!**

[parentsleague@baylor.edu](mailto:parentsleague@baylor.edu) • 1-888-287-5557  
[www.baylor.edu/parentsleague](http://www.baylor.edu/parentsleague)

# MAY | 2013



## HIGHLIGHTS

### ACADEMICS

- 3** Last day of classes
- 6-7** Study Days
- 8-14** Final Exams
- 15-16** Administrative check for graduation
- 17-18** Spring Commencement
- 20** Minimester class session begin
- 27** Memorial Day Holiday (no classes)

### STUDENT LIFE

- 6** Pancake Break
- 7** Ring Out Ceremony
- 12** Mother's Day
- 15** Residence Halls spring closing
- 18** Residence Halls close for graduating seniors

### ATHLETICS

- 3-5** Outdoor Track & Field: Big 12 Championship
- 22-26** Baseball: Big 12 Championship

SUN	MON	TUES	WED	THU	FRI	SAT
<b>TAKING CARE OF BUSINESS</b> For the third consecutive year, Baylor's entrepreneurship program ranked among the top five in the nation due to its innovative teaching, faculty experience and real-life opportunities.			1	2	3	4
5	6	7	8	9	10	11
12	13	14	15	16	17	18
19	20	21	22	23	COMMENCEMENT	
24	25	26	27	28	29	30
31	1	2	3	4	5	6
7	8	9	10	11	12	13
14	15	16	17	18	19	20
21	22	23	24	25	26	27
28	29	30	31	1	2	3
4	5	6	7	8	9	10
11	12	13	14	15	16	17
18	19	20	21	22	23	24
25	26	27	28	29	30	31
1	2	3	4	5	6	7
8	9	10	11	12	13	14
15	16	17	18	19	20	21
22	23	24	25	26	27	28
29	30	31	1	2	3	4
5	6	7	8	9	10	11
12	13	14	15	16	17	18
19	20	21	22	23	24	25
26	27	28	29	30	31	1
2	3	4	5	6	7	8
9	10	11	12	13	14	15
16	17	18	19	20	21	22
23	24	25	26	27	28	29
30	31	1	2	3	4	5
6	7	8	9	10	11	12
13	14	15	16	17	18	19
20	21	22	23	24	25	26
27	28	29	30	31	1	2
3	4	5	6	7	8	9
10	11	12	13	14	15	16
17	18	19	20	21	22	23
24	25	26	27	28	29	30
31	1	2	3	4	5	6



# JUNE | 2013



## HIGHLIGHTS

### ACADEMICS

- 4 Summer I class session begins
- 7 Minimester ends

### STUDENT LIFE

- 16 Father's Day

SUN	MON	TUES	WED	THU	FRI	SAT
FROM THE LARIAT TO THE NEW YORK TIMES Senior journalism major and <i>Lariat</i> sports reporter Krista Pirtle was asked to cover Baylor Athletics for the <i>New York Times</i> ' blog, <i>The Quad</i> , during the fall of 2011.					31	1
2	3	4	5	6	7	8
9	10	11	12	13	14	15
16	17	18	19	20	21	22
23/30	24	25	26	27	28	29



# JULY | 2013



## HIGHLIGHTS

### ACADEMICS

- 4** Independence Day Holiday (no classes)
- 9** Summer I exams
- 11** Summer II class session begins

SUN	MON	TUES	WED	THU	FRI	SAT
30	1	2	3	4 INDEPENDENCE DAY HOLIDAY	5	6
7	8	9	10	11	12	13
14	15	16	17	18	19	20
21	22	23	24	25	26	27
28	29	30	31	<b>LIVE 31 MOVEMENT</b> Sophomore Alex Eklund spurred a national movement in 2011 when he posted the YouTube video, "I'd rather have a Proverbs 31 Woman than a Victoria's Secret Model," attracting more than 200,000 views.		





# AUGUST | 2013



## HIGHLIGHTS

### ACADEMICS

- 14** Summer II exams
- 15-16** Administrative check for graduation
- 17** Summer Commencement

### ATHLETICS

[www.baylorbears.com](http://www.baylorbears.com)

SUN	MON	TUES	WED	THU	FRI	SAT
<b>LIKE FATHER LIKE SON</b> Baylor grad and son of a former Baylor President, Kevin Reynolds is making his impact in Hollywood. Kevin has directed many popular movies such as "Fandango," "Waterworld" and "The Count of Monte Cristo."				1	2	3
4	5	6	7	8	9	10
11	12	13	14	15	16	17
18	19	20	21	22	23	24
25	26	27	28	29	30	31

# HELPFUL RESOURCES

All numbers have (254) area code

## Emergency Services

Health Center .....	710-1010
Campus Police .....	710-2222

Academic Advisement, Class Schedule .....	710-7280
Academic Records and Transcripts .....	710-1814
Academic Support Programs .....	710-8696
Admissions .....	710-3435
e-mail: Admissions@baylor.edu	
Air Force ROTC .....	710-3513
Athletic Events and Opportunities .....	710-1234
Athletic Tickets .....	710-1000
Toll free .....	1-800-229-5678
Bands and Instrumental Ensembles .....	710-3571
e-mail: Music_School@baylor.edu	
Bookstore .....	710-2161
Campus Living and Learning .....	710-3642
Alexander/Memorial Residence Hall Office .....	292-7004
Allen/Dawson Residence Hall Office .....	292-7025
Arbors, East Arbors .....	297-5505
Brooks Residential College .....	292-7047
Brooks Residential Flats .....	292-7049
Collins Residence Hall Office .....	292-7010
Kokernot Residence Hall Office .....	292-7013
Martin Residence Hall Office .....	292-7015
North Russell Residence Hall Office .....	292-7019
North Village Residential Community .....	292-7028
Penland Residence Hall Office .....	292-7022
South Russell Residence Hall Office .....	292-7024
Career Counseling .....	710-8434
Career Services .....	710-3771
e-mail: hireabear@baylor.edu	
Cashier's Office .....	710-2311

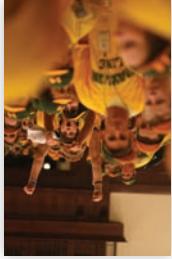
Choral Programs .....	710-3654
Counseling-Personal, Interpersonal, Educational Concerns .....	710-2467
e-mail: Counseling_Center@baylor.edu	
Financial Aid, Loans, Grants, Student Jobs .....	710-2611
fax .....	710-2695
e-mail: Financial_Aid@baylor.edu	
Food Service, Meal Plans .....	710-4661
Greek Life .....	710-2371
Homecoming .....	710-3322
e-mail: Homecoming@baylor.edu	
International Students and Scholars .....	710-2657
Mail Services .....	710-1310
fax .....	710-1321
Minority Students, Support Services .....	710-6948
Notary Public, Academic Integrity .....	710-8882
Office of Access and Learning Accommodation .....	710-3605
Parents Information, Involvement (Helpline) .....	1-888-287-5557
Parents League .....	710-8545
Parent & Family Weekend .....	710-3322
e-mail: parentandfamilyweekened@baylor.edu	
Parking Services .....	710-3804
Paul L. Foster Success Center .....	710-8212
Payment of University Charges, Check Cashing .....	710-2311
e-mail: Cashiers_Office@baylor.edu	
Registrar's Office .....	710-1814
Spiritual Life .....	710-3517
Student-Athlete Services .....	710-3810
Student Organizations (Service, Spirit and Social Groups) .....	710-2371
Telephone Long Distance Service .....	710-3310
University Development .....	710-2561
University Switchboard .....	710-1011
Withdrawal from Baylor .....	710-8212

**Baylor Website** ..... [www.baylor.edu](http://www.baylor.edu)

Keep up with all the latest news, information and events through Baylor's social media outlets:

**Baylor Proud Blog:** [www.baylor.edu/baylorproud](http://www.baylor.edu/baylorproud) • **iTunes:** [www.baylor.edu/itunes](http://www.baylor.edu/itunes) • **Facebook** • **Twitter**





**Connect On Campus at  
PARENT & FAMILY  
WEEKEND**  
OCTOBER 12-13, 2012

Join us for Parent & Family Weekend and experience Baylor firsthand. During this exciting weekend, your family has the opportunity to explore the history, traditions and activities at Baylor alongside your Bear. Through campus tours, introductions to faculty, a football game and other special events, you are sure to get a taste of all that makes the Baylor experience one-of-a-kind.

[www.baylor.edu/parentandfamilyweekend](http://www.baylor.edu/parentandfamilyweekend)

