

BAYLOR

U N I V E R S I T Y



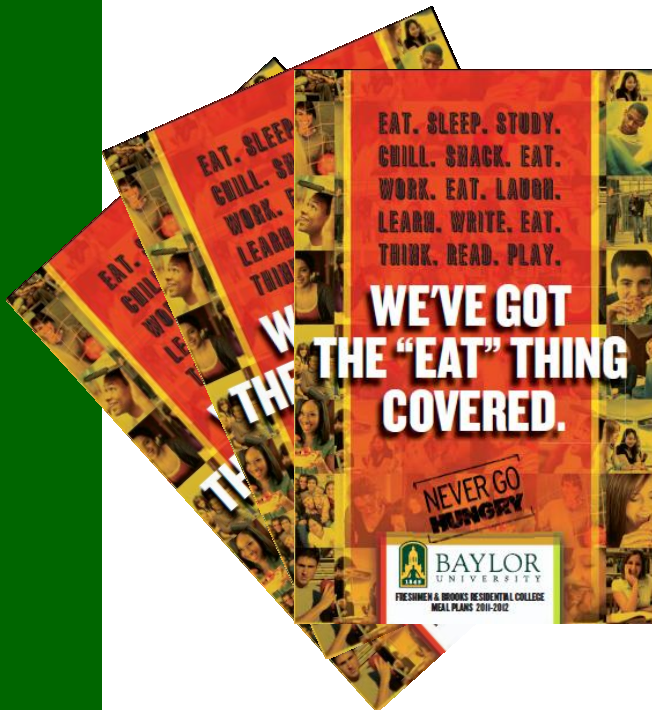
Campus Services

Orientation 2011

Table of Contents

Dining Services	3
Parking Services	10
Baylor Bookstore	15
Copy Center	26
Mail Services	29

Baylor Dining Services



- First Year Freshmen Meal Plan Memberships
- Dining Locations
- CampusDish
- Frequently Asked Questions

Baylor Dining Services

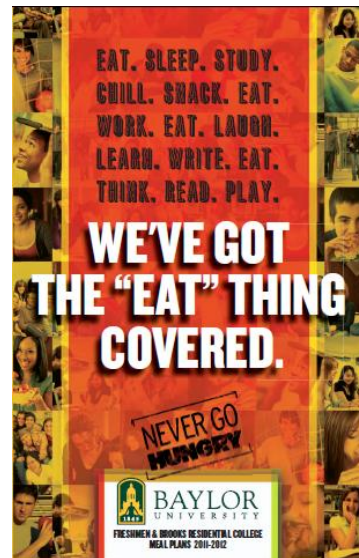
First Year Freshmen Meal Plan Memberships

The Unlimited

Unlimited, all
you care to eat
meals per week

The Works

16 meals per
week and
\$100 Dining
Dollars



The Classic

11 meals per
week and
\$150 Dining
Dollars

The Block 225

225 meals per
semester and
\$75 Dining
Dollars



Eco To-Go

Easy as 1-2-3!

1. Use it.
2. Rinse it.
3. Repeat.

JUST DO IT
Make the change,
go GREEN

1. Sign up for your eco to-go shell at Memorial, Penland or Collins.

2. Use at any three dining halls, for any meal- breakfast, lunch or dinner.

3. Rinse used container and return when you're ready to pick up a new shell for your next on-the-go meal.

Questions you may have...

What is an eco to-go shell?

-It's a plastic re-usable shell that is used just like a to-go box.

What do I do with my used eco to-go shell?

-Rinse and return to a dining hall that's convenient for you.

How much does an eco to-go shell cost?

-Nothing, it's free!

Why use an eco to-go shell instead of a traditional to-go box?

-It reduces waste and supports Baylor's recycling initiative.

For more information, visit: www.baylor.edu/dining

Printed on 100% Recycled Paper

Baylor Dining Services **campus** **dish**[®]

dining.baylor.edu

- Menus for all residential locations with corresponding nutritional information
- Hours of operation, manager contact information and a description of all dining locations
- Information on upcoming special events
- Meal Plan Membership Wizard: a guide to ensuring meal plan memberships correspond with student lifestyle.

Dining Services

Frequently Asked Questions

- **What is the most popular freshman meal plan membership option?**

Traditionally students have chosen The Classic (11 meals/week and \$150 DD). To ensure students to sign up for a membership that fits their lifestyle, our interactive Meal Plan Wizard at dining.baylor.edu was designed to assist in choosing the right plan for every student.

- **What is the difference between Dining Dollars and Bear Bucks?**

Dining Dollars were created to ensure students have the convenience of a monetary allotment built into meal plan memberships for all dining locations on campus. BearBucks can be used in all Dining locations as well as for other services both on- and off-campus.

- **Why is it beneficial to have a meal plan membership?**

Guaranteed all-you-care-to-eat meals, options that support a healthy lifestyle, no need to waste time and gas leaving campus, locations that open early and stay open late, no mess or clean up...the benefits are endless.

Dining Services

Frequently Asked Questions

- **Can unused meals be carried over to the next week?**

It depends on the membership. The Block 225 meals are available upon purchase, students are able to use them anyway that works. Meals/week memberships must be used in the week they are budgeted, they do not rollover from week to week.

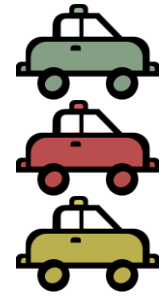
- **Are the same foods served at each residential restaurant?**

No, all four of our residential locations have unique, alternating menu cycles. Students can view menus and corresponding nutritional information at dining.baylor.edu.

- **Can meal plan memberships be changed at a later date?**

Yes, every schedule is different and constantly changing. If a membership is not working it can be changed in the first two weeks of every semester.

Parking and Transportation Services



254.710.PARK (7275)

parking@baylor.edu

www.baylor.edu/parking

Location:

Clifton Robinson Tower

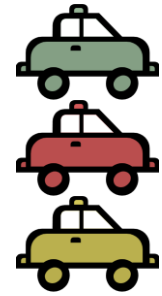
1st Floor Cashier's Office

Office Hours:

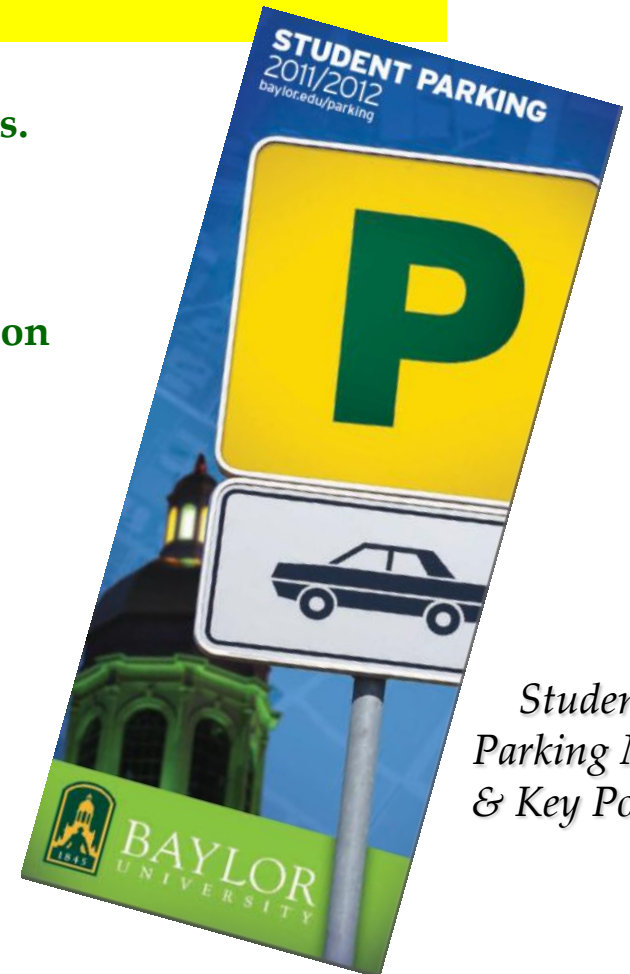
Weekdays 8:00 am – 5:00 pm;

Thursdays 9:00 am – 5:00 pm

Parking and Transportation Services

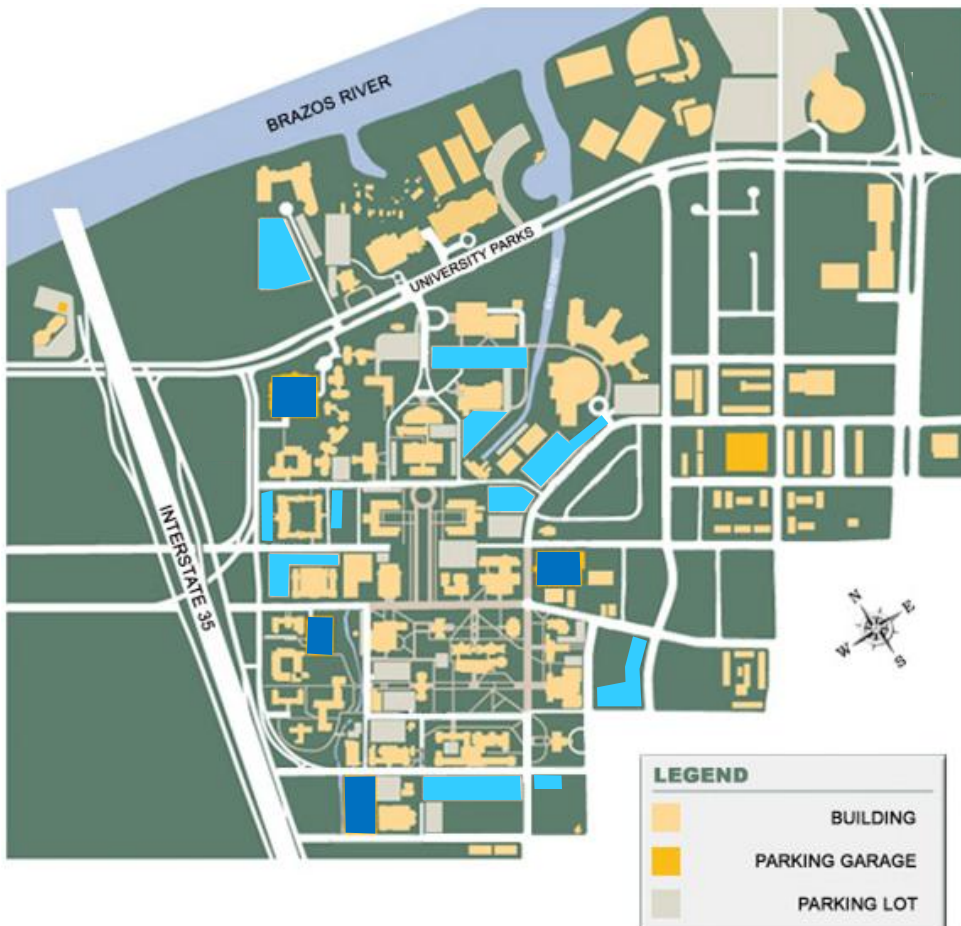
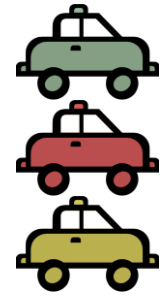


- A parking permit is required to park on campus.
 - Mon-Fri 7:00 AM to 5:00 PM
- Permits can be ordered on-line during orientation
 - License Plate Number
 - Make and Model of vehicle
 - Year and Color of vehicle
- Pick-up at orientation or before school starts



*Student
Parking Map
& Key Points*

Parking and Transportation Services



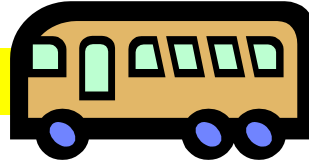
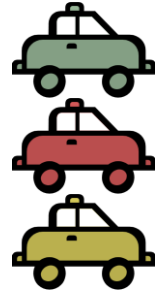
Student On-Campus Parking Permit

4 Parking Garages and
12 Surface Parking Lots

Look for parking signs
Review the Printed Map

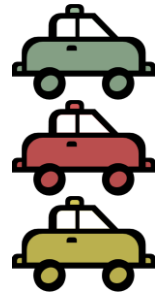
Go on-line and review
the regulations.

Parking and Transportation Services



- The Baylor University Shuttle (BUS)
 - Class Days 7:30 AM to 5:30 PM
 - A good way around campus
 - No Cost to Ride
- Downtown Area Shuttle (DASH)
- Football Shuttles too!

Parking and Transportation Services



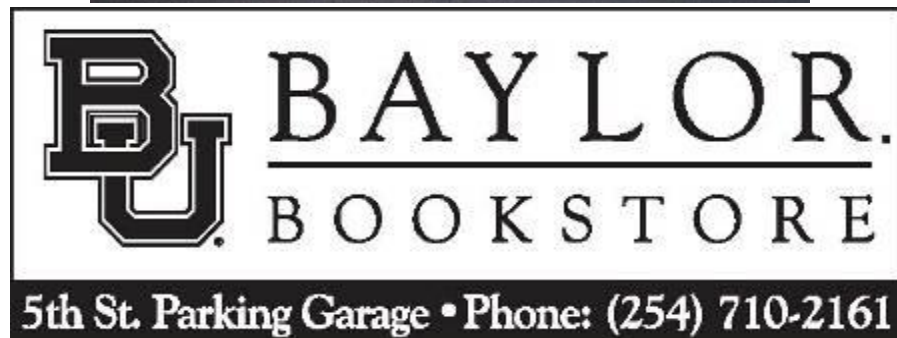
- Zipcar is the world's largest car-sharing service
- Baylor students (18+) can join for \$35 a year
- \$8 per hour or \$66 per day
 - Gas and insurance included
- Sign up at: Zipcar.com/baylor



*Wheels when
you want
them.*



BAYLOR BOOKSTORE



5th St. Parking Garage • Phone: (254) 710-2161

BAYLOR BOOKSTORE



LEGEND

-  Building
-  Parking Lot
-  Parking Garage

1201 South 5th Street

Waco, TX 76706-1425

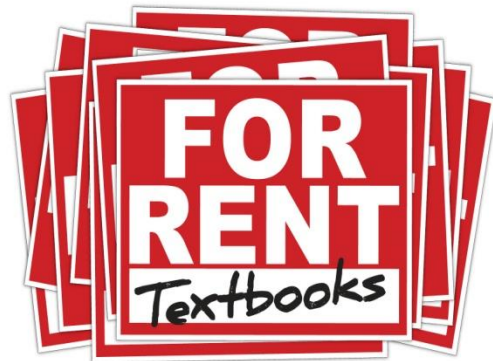
Phone #: 254-710-2161

Email: Baylor@bkstr.com

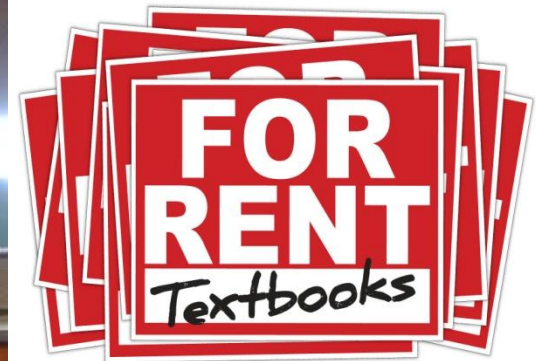
Regular Hours:
Mon 8:30AM- 6PM
Tue 8:30AM- 6PM
Wed 8:30AM-
6PM
Thu 8:30AM- 6PM
Fri 9AM- 5PM
Sat 10AM- 4PM
Sun CLOSED

Summer Hours:
Mon 9AM-5:30PM
Tue 9AM-5:30PM
Wed 9AM-5:30PM
Thu 9AM-5:30PM
Fri 9AM-5PM
Sat 10AM-4PM
Sun CLOSED

Baylor Bookstore



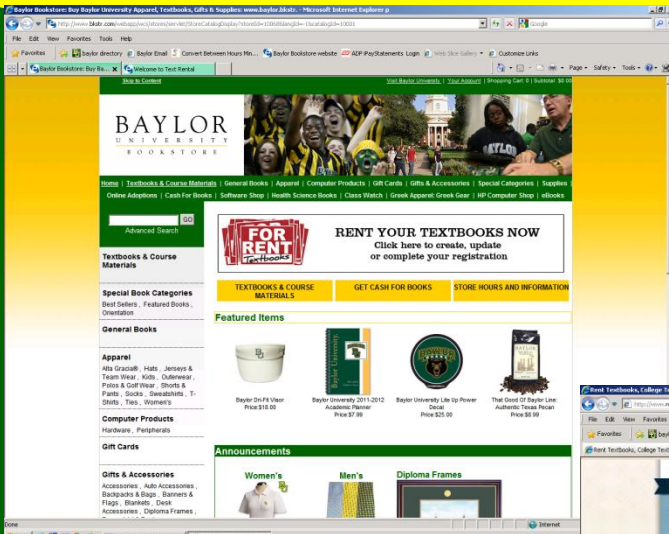
SAVE 50% OR MORE



SAVE 50% OR MORE

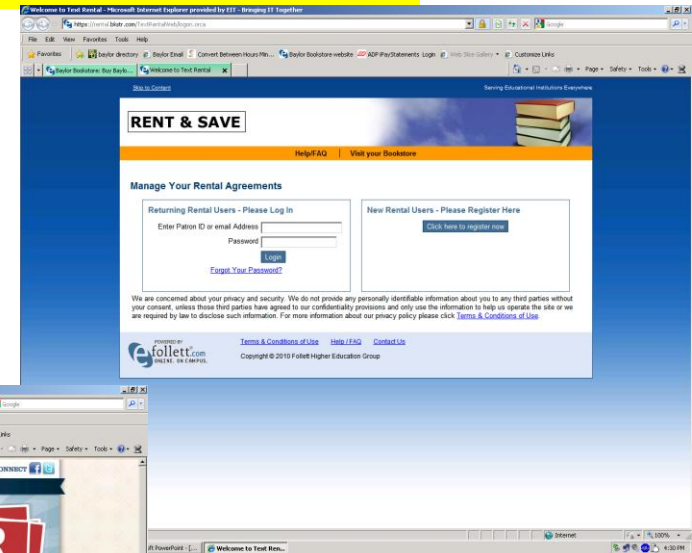
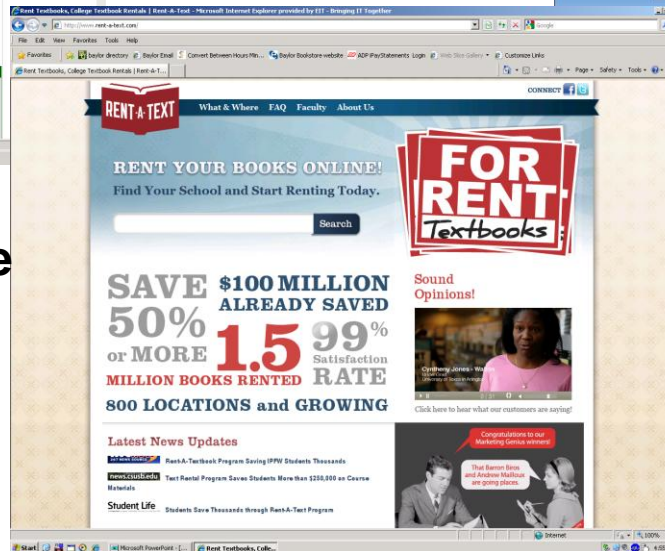
Title	Author	Edition	Purchase Price	Rental Price
New Oxford Annotated Bible	Bible	4th	\$32.99	\$16.08
Intro to the Bible	Hauer	8th	\$91.55	\$44.63
Access Bible	Bible		\$42.99	\$20.96
Mathematical View of Our World	Parks		\$192.55	\$93.87
Biology	Campbell	9th	\$207.96	\$107.38
Psychology	Myers	9th	\$146.80	\$71.57
Theater	Wainscott	3rd	\$106.50	\$51.92
Media Now	Straubhaar	7th	\$154.25	\$75.20
Sociology in Our Times	Kendall	8th	\$138.20	\$67.37

Baylor Bookstore



Baylor.edu/Bookstore

Rent-a-text.com



Rental.bkstr.com

Baylor Bookstore



CaféScribe

Digital for

Baylor Bookstore
"Try Now, Buy Later!"
7 day Free Trial



A screenshot of a Microsoft Internet Explorer browser window displaying the CaféScribe website. The browser's address bar shows the URL: http://www.cafescribe.com/index.php?option=com_virtuemart&page=shop.product_details&page=shop_item&page=product_id=14313&category_id=6&manufacturer... The website header includes the CaféScribe logo and navigation links: Home, Digital Textbook Store, Groups, Download, JOIN | SIGN IN | VIEW CART. A search bar is located in the top right corner. The main content area features a product page for "Psychology 9th Edition". On the left, there is a book cover image and a "View Full-Size Image" link. Below the image, the price information is displayed: "List Price: \$129.97", "You Save: \$64.54 (50%)", and "You Pay: \$64.53". There are buttons for "Buy Digital Version", "Try Now, Buy Later", and "Try Now, Buy Later FAQ". The "Product Details" section lists: Author: David G. Myers, Copyright: 2010, Pages: 911, Publisher: Worth Publishers, Edition: 9, Format: MyScribe PDF Book, ISBN(N): 9781429215978, Print ISBN(M): 1429215976, and Digital. On the right side of the product page, there is a section titled "Why purchase a digital textbook?" with a paragraph of text and a "More..." link. Below that is a "Shared Notes" section with two entries: one by Michael Neumann dated April 10, 2011, and one by Nancy Anderson dated March 20, 2011. There is also an "Adding Notes To This Book" section with five user avatars: Arica Jackson, Chad Landry, Jennifer Cruz, Robyn Kotzak, and Anna Miles. At the bottom of the page, there is an "Others Reading This Book" section with several small profile pictures. The browser's taskbar at the bottom shows the Start button, several open applications including Microsoft PowerPoint, and the system tray with the time 11:27 AM.

Academically Priced Apple® Computers*

iMac



iPad 2



Power & Portability!

*Faculty, staff or student ID required to receive academic discount

Academically Priced Apple® Computers*

MacBook Pro

13.3-inch: 2.3 Ghz \$1099

- 2.3 Ghz dual-core Intel Core i5
- 4GB DDR3 SDRAM memory
- 320 GB hard drive
- Intel HD Graphics 3000
- Built-in 7-hour battery*

15.4-inch: 2.0 Ghz \$1699

- 2.0 Ghz quad-core Intel Core i7
- 4GB DDR3 SDRAM memory
- 500GB hard drive
- Intel HD Graphics 3000 & AMD Radeon HD 6490M, 256MB
- Built-in 7 hour battery*

17-inch: 2.2 Ghz \$2099

- 2.2 Ghz quad-core Intel Core i7
- 4GB DDR3 SDRAM memory
- 750GB hard drive
- Intel HD Graphics 3000 & AMD Radeon HD 6750M, 1GB
- Built-in 7 hour battery*



iMac

21.5-inch: 3.06 Ghz \$1149

- 3.06 Ghz Intel Core i3 processor
- 4GB DDR3 SDRAM memory
- 500 GB hard drive
- 8x double layer Super Drive (DVD+R DL/DVD±RW/RD-RW)

27-inch: 3.2 Ghz \$1599

- 3.2 Ghz Intel Core i3 processor
- 4GB DDR3 SDRAM memory
- 1 TB hard drive
- 8x double layer Super Drive (DVD+R DL/DVD±RW/RD-RW)



*Faculty, staff or student ID required to receive academic discount

Prices subject to change

Academically Priced Apple® Products*



iPad 2 Wi-Fi



- 9.7-inch (diagonal) LED-backlit display with IPS technology
- Multi-Touch screen
- Wi-Fi (802.11a/b/g/n)
- Bluetooth 2.1 + EDR technology
- Up to 10 hours battery life²

16GB ¹	32GB ¹	64GB ¹
\$499.99	\$599.99	\$699.99

iPad 2 Wi-Fi + 3G

- 9.7-inch (diagonal) LED-backlit display with IPS technology
- Multi-Touch screen
- 3G data service (data plan sold separately)
- On device activation, Micro SIM included
- Wi-Fi (802.11a/b/g/n)
- Bluetooth 2.1 + EDR technology
- Up to 10 hours battery life²
- 1.34 pounds

16GB ¹	32GB ¹	64GB ¹
\$629.00	\$729.00	\$829.00

Get unlimited expert telephone technical support for your iPad, plus 2 years repair service for just \$79 with AppleCare Protection Plan. Ask a sales person for more information.

¹1GB = 1 billion bytes; actual formatted capacity less. ²Testing conducted by Apple in January 2010 using preproduction iPad units and software. Testing consisted of full battery discharge while performing each of the following tasks: video playback, audio playback, and internet browsing using Wi-Fi. Video content was a repeated 2-hour 25-minute movie purchased from the iTunes Store. Audio content was a playlist of 365 unique songs, consisting of a combination of songs imported from CDs using iTunes 1.25 (H264 AAC encoding) and songs purchased from the iTunes Store (256-Kbps AAC encoding). Internet over Wi-Fi tests were conducted using a closed network and dedicated web and mail servers, browsing snapshot versions of 30 popular web pages, and receiving mail once an hour. All settings were default except: Wi-Fi was associated with a network; the Wi-Fi location Ask to Join Networks and Auto-joinness were turned off. Battery life depends on device settings, usage, and many other factors. Battery tests are conducted using specific iPad units; actual results may vary. ³Actual size and weight vary by configuration and manufacturing process. L419022A-US

***Faculty, staff or student ID required to receive academic discount**

Prices subject to change

Baylor Bookstore



Academically Priced Software

- Microsoft Windows 7 Ultimate Edition (32 or 64 bit) \$15
- Office 2010 Pro Plus \$15
- Office 2011 for Mac \$15
- CS 5.5 Design Standard (Mac or PC) \$249
- CS 5.5 Design Premium (Mac or PC) \$379
- CS 5.5 Master Collection (Mac or PC) \$649
- CS 5 PhotoShop \$179

Baylor Bookstore - Your Baylor Gear Headquarters!



Baylor Bookstore - FAQ's



What do I need to bring with me when purchasing my textbooks?

If you have not purchased your books you will need your class schedule with you to find the correct titles needed.

If you purchased your books through our online service E-Follett you will need to bring the order pick-up confirmation and your ID to the online pick-up area.

What if I purchase books and go to class to find out that the books are not needed. What can I do?

Our refund period is 7 days from the start of class. You must have your original receipt and the books must be in the same condition purchased. If the books are in a package they must be intact to receive a full refund.

What does the term buyback mean?

Buyback is at the end of the term during finals week that books purchased can be sold back to the bookstore. You can receive up to 50% of the purchase price back for your books. This depends on needs of the store and if the book is being used for the next term.

Copy Services

- General Information
- Available Services



Copy Services

General Information

Location: Morrison Hall, RM 121

Hours of Operation: M-F 7:00 am – 6:00 pm; Closed Saturday and Sunday

Questions: (254)710-1914 or Copy_Center@baylor.edu

Website: www.baylor.edu/copy

Copy Services

Available Services

- Black and White Copies
- Folding
- Shrink Wrap
- Booklets
- Spiral Binding
- Color Copies
- Laminating
- Drilling
- NCR Forms
- Brochures
- Stapling
- Cutting
- Padding
- Colored Papers
- Faxing

Call for Additional Services

Mail Services

- General Information
- Address Information
- Frequently Asked Questions



Mail Services

General Information

Location: Bill Daniel Student Center

Hours of Operation: M-F 7:30 am – 5:30pm; Sat. 9:00 am – 11:00 am; Closed Sunday

Questions: (254)710-1310 or e-mail at Campus_Mail@baylor.edu

Website: www.baylor.edu/mail

Mail Services

Address Information

Student Name

One Bear Place #XXXXX

Waco, TX 76798-XXXX

Mailbox assignments will be e-mailed to the student's Baylor e-mail address prior to the fall semester. Addresses are also available on-line under campus address in BearWeb.

Mail Services

Frequently Asked Questions

The shipping company is stating they cannot ship to a P.O. Box, only a physical address. What do I do?

One Bear Place addresses are not P.O. boxes and can be used as a physical address. All student packages should be sent to the specific One Bear Place number for the student (see address sample).

How do I get a mailbox key?

Mailbox keys will be issued at the beginning of the fall semester starting on move-in day.

Can I rent a mailbox if I live off-campus?

Only students living in an on-campus residence hall are issued mailboxes.

Campus Services Websites

Dining Services: www.baylor.edu/dining

Parking Services: www.baylor.edu/parking

Copy Services: www.baylor.edu/copy

Baylor Bookstore: www.baylor.edu/bookstore

Mail Services: www.baylor.edu/mail

Door Prizes

\$10 Starbucks

\$20 Chili's Too

\$50 for the Bookstore

BAYLOR

U N I V E R S I T Y



Campus Services

Orientation 2011