



Leadership Team Expands Global Community

By Keri Zimlich

The Global Community Living- Learning Center is a place where students and faculty come together to learn new languages and immerse themselves in global ideas.

“Getting to work with students who have been to places you have never heard of and have done things that most students will never do in their lives is something that makes you want to listen and be a part of what they are doing,” said Rachana Chinn, a Houston junior.

Starting next semester the GC-LLC is

incorporating new ideas to help increase unity among the group. The Leadership Teams are one step closer to achieving just that; they range from Events and Activities to Fundraising.

“Global Community is a baby program, so we are trying to build it up and let people know who we are,” said Ke’leigh Sapp, a freshman from South Padre Island.

With the students working together to move the GC-LLC forward with the help of the faculty, there is no doubt that

the students will enjoy the group and each other.

“Being open-minded and dedicated to the group makes it easy, as well as listening to what everyone has to say and then incorporating your own ideas,” Sapp said.

The teams are going to help with organization of the program and make students more responsible for the group.

“If we all work together then we can change the Global Community into something even better,” Chinn said.

Students Gain New Outlook

By Lacey Murphy

This semester in the Global Community Living-Learning Center, each student was part of a group that put together an OsoGlobal Hour project. Each group taught us about a topic they were personally interested in.

My favorite project was the Sports of the World Day. The guys who led this project taught us about three different sports of the world: footvolley, sumo wrestling, and handball.

Sumo wrestling was seriously one of the most fun things I’ve done at Baylor this semester. Two people went at a time and put on huge sweatpants and a big shirt and managed to stuff two pillows in their pants and two pillows in their shirt. Then, we just tried to take each other down.

The activities that day reflected what the GC-LLC is all about: having fun together as a diverse community. Yes, we learned a lot that day, but our hands-on learning experience helped us grow into a tighter community.

I believe people in the GC-LLC are bonded by a common interest in international diversity.



Photo courtesy of Emily Rodgers, program director

Students in the Global Community experience a different culture by participating in sumo wrestling during their OsoGlobal Sports of the World event.

Furthermore, we don’t want to keep our experiences to ourselves, but share them so that everyone can enjoy them and become better, more knowledgeable global citizens. Global Community is not just about academic learning, but global citizenship as well.

Picture This

Students and Faculty Capture Their World



Photo courtesy of Rosalie Barrera

The Winner: Under a Canal in Venice, By Rosalie Barrera and Cristian Bratu

The vantage point of this picture is from a dark and claustrophobic canal. The view from that canal, the place where we ended up right after this picture, was amazing. This captures the vision that many students living in the GC-LLC have; they feel safe and cozy now, but they can't wait to get past 'the canal' and into the open water.



Photo courtesy of Lacey Murphy

Lacey Murphy captures the busyness of city life in Shanghai, China, with the all the vibrant colors, looming skyscrapers and crowded streets.

For the Global Community Photo Contest, students and faculty showcase their views of the world through pictures. The entries include photos from the students in the Global Community capturing their experiences around the world. Members of the GC-LLC capture cultural diversity, global scenery, and international experiences with their cameras.



Photo courtesy of Allie Smith

Honorable mention went to this photo of a bridge in the woods of Kassel, Germany, photographed by Allie Smith.



Photo courtesy of Yuko Prefume

Yuko Prefume's photo of the Shinkyo Bridge in Nikko, Japan, received honorable mention.

Candlelight Ceremony Enlightens Students

By Wakeelah Crutison

A litany of voices rings out into the dusk in celebration of the differences in people around the world.

As the sun goes down, students, faculty and staff members gather in the Bill Daniel Student Center Bowl, with their spirits as high as the flags they wave and smiles as bright as the candles they light.

The fourth annual Candlelight Procession is “meant to raise cultural awareness,” said Emily Rodgers, the program director of the Global Community Living-Learning Center.

From Spanish to French and Russian to Japanese, various cultures are represented through the power of song.

“Students experience a collision of culture,” Rodgers said.

During the ceremony, students of different modern foreign language classes share songs and maximize the cultural experience by strumming guitars, waving national flags and even dressing in traditional clothing.

The ceremony, now a Global Community tradition, also functions under the leadership of the department of modern foreign languages and Alpha Lambda Delta.

Students in the GC-LLC get to explore differences become globally-minded ambassadors and not focus so much on how people are the same. The event serves as an annual reminder of cultural differences through song and a candlelit walk through campus.

This year the GC-LLC incorporated a tribute to Haiti along with an effort to raise funds for victims affected by the earthquake.

Students Demetria Williams, Amber Gustin, Marilyn Johnson and Helen Woldemichael led the tribute, raising awareness and donations by selling baked goods and ribbons for the people of Haiti.

After everyone received a candle, flames spread from wick to wick, bringing light and exposing differences.

“Lighting the candle of a neighbor illuminates the common thread among us,” Rodgers said.

Rodgers said the Candlelight Procession is one of the first campus-wide traditions of the GC-LLC. It’s a way to embody what the GC-LLC represents in a campus context. The candlelight ceremony is a physical manifestation of the connection people share.

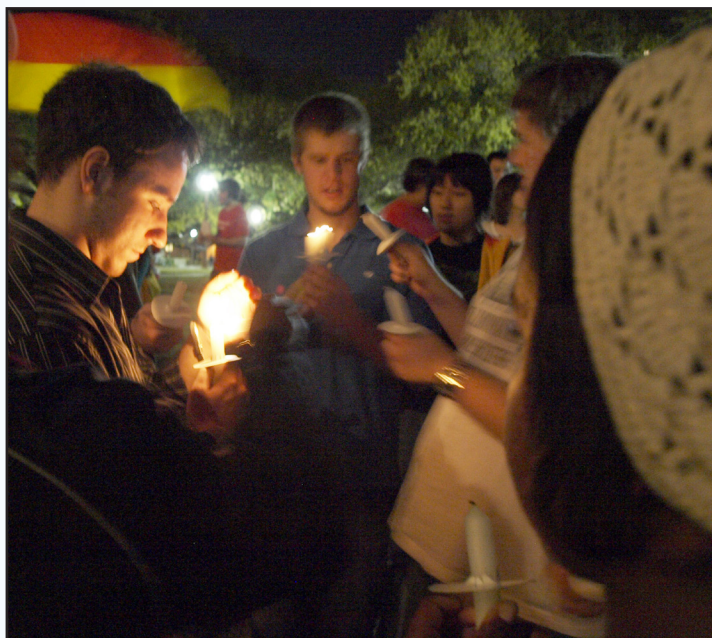


Photo courtesy of Wakeelah Crutison

Students in the Global Community Living-Learning Center support diversity and raise cultural awareness at the fourth annual Candlelight Procession.

“It’s so cool to look back and see a stream of little flames. The string of candles represents the thread that connects us all,” Rodgers said. “It casts a vision that there’s a world outside of Baylor.”

“People don’t realize how simple it is to be involved and how meaningful it can be,” Rodgers said. “It’s really easy but really powerful.”

Rodgers said students are encouraged by ceremony.

It reignites their interest in pursuing global learning, and serves as a reminder that they are not alone in their pursuits.

Amongst the pulsing beat of the drum and lilting voices, the soft rhythmic tattoo of feet on the pavement can be heard.

With the candles lit, the members of the Global Community begin the procession across the Baylor campus.

Even though the wind makes it impossible for the candles to remain lit for the entirety of the campus procession, the students carry on the tradition as a global community and revel in the camaraderie serving as a light in the dark.

“Lighting the candle of a neighbor illuminates the common thread among us.”

- Emily Rodgers , program director

Expanding Global Horizons

By: Travis Simon

One of the things I love most about the Global Community is how willing the faculty partners are to help each of us improve our language skills.

This semester, besides watching fútbol games and telenovelas in Spanish with our suite liaisons, I have had the opportunity to work through a novel by Gabriel Garcia Marquez in Spanish with Señora Michelle Porter.

We have been meeting every other Friday to talk about the reading, "Crónica de Una Muerte Anunciada", and she has significantly helped me with vocabulary and plot comprehension.

The best part is simply reading a novel in another language for fun. When the pressure is off, I've found that Spanish becomes that much more rewarding and enjoyable.

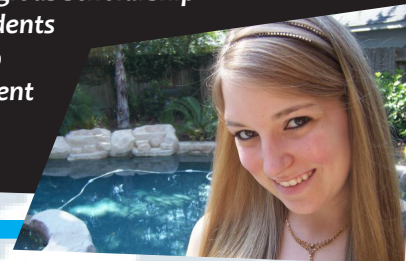
Most of all, I would highly encourage anyone trying to keep up with their second language to dive into a book written in that language, with a friend or group, in order to remember how enjoyable foreign languages can be outside the confines of the classroom.



Travis Simon

In Recognition of a Global Scholar

Saralyn Salisbury, a junior from Cypress, was named a finalist for the Truman Scholarship. The prestigious scholarship is awarded to students showing leadership skills and commitment to public service.



Letter from the Director

By: Janet Norden

Do I love my neighbor? Sure I do ... I guess. What do you mean by love? What do you mean by neighbor?

Loving your neighbor involves a lot of hard things. What if your neighbor is different, difficult, or dirty? How do you offer love? What can you do? What do you give?

Ask a Global Community member.

They will tell you to be sensitized to the needs of those around you, both near and far.

"Near"

looms large; they or their attitude may be less than pleasant. "Far" can be easier; they probably appear more exotic to you.

Before understanding

the other, you need to consider yourself and your perspectives.

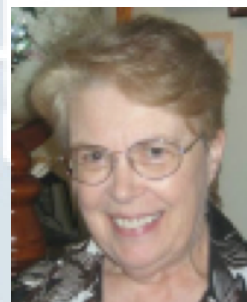
If you go abroad and experience the exotic and nothing else, you're merely viewing the superficial, being an average tourist.

But, when your self-identity is on the line, when you suffer through misunderstandings and

discomforts, then you are learning about yourself, entering into the other's world, not just expecting them to meet you in your comfort zone.

What is the Global Community?

It is where you learn not just about the other, but about yourself, your perspectives, your values, your needs and your ability to love your neighbor.



Janet Norden

Janet Norden has been the Global Community faculty director for the past two years. This will be her last semester. The GC-LLC would like to thank Janet Norden for her support of the Global Community. Rosalie Barrera will be stepping in as the new faculty director. The members of the Global Community want to welcome her and look forward to the new partnership.

Global Community leaders:

Janet Norden,
faculty director
Emily Rodgers,
program director

Editors:

Wakeelah Crutison
Keri Zimlich

for more info, go to:
www.baylor.edu/gcllc

Emily Rodgers
Yuko Prefume
Lacey Murphy
Janet Norden
Travis Simon
Allie Smith
Cristian Bratu
Keri Zimlich
Saralyn Salisbury
Rosalie Barrera
Wakeelah Crutison

Contributors